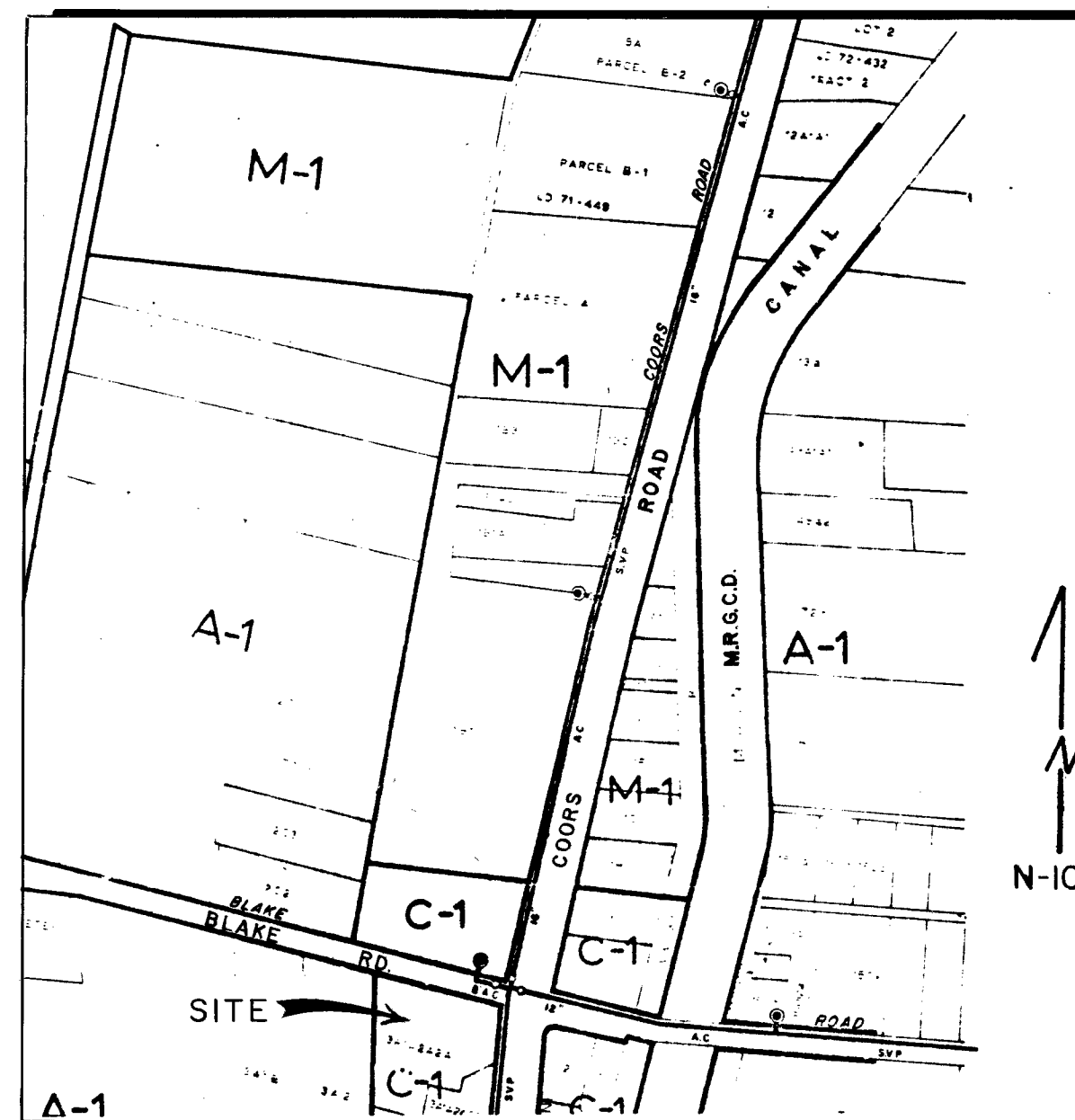


VICINITY MAP



INDEX TO DRAWINGS

1. COVER SHEET
2. UTILITY PLAN & PROFILE

ALLSUP'S STORE

UTILITIES EXTENSION

GENERAL NOTES - UTILITY

1. All utility stationing is referred to street C Stationing. See Note 1 of City Standard Drawing S-9 for water and sewer line proximity statement.

SEWER LINES

1. All sanitary sewer mains shall be vitrified clay pipe conforming to A.S.T.M. C-700 and A.S.T.M. C-425, latest revision.
2. All sanitary sewer manholes shall be Type E, 48" diameter, unless otherwise shown on the Drawings.

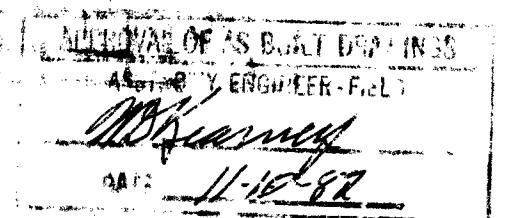
WATER LINES

1. Water mains shall be located 10 feet north or west of street centerlines except as otherwise indicated on the Drawings. Except where lines cross, water mains shall not be located less than 10 feet away from sewer lines nor closer than 3 feet to the lip of the curb and gutter.
2. Water mains shall be laid with a minimum cover of 3'-8" from top of main to top of the near curb.
3. All fire hydrants, valves, and fittings shall be provided with concrete blocking as shown on the "City Standard Details"
4. Fire hydrants shall be set with the bottom of the barrel flange 5" \pm 3" above the top of curb
5. Install E.M.S. at all sewer services and water main horizontal bends, tees, valves and dead ends and as per City Standard Drawings S8 and S9.

NOTICE TO CONTRACTORS

1. New Mexico Standard Specifications for Public Works Construction -1979 Edition will be referred to hereon as the "Standard Specification".
2. All work detailed on these plans to be performed under contract shall, except as otherwise stated or provided for hereon, be constructed in accordance with "Contract Documents for City-Wide Utilities and Cash Paving No. 30 and the Standard Specification."

- All utilities and utility service lines shall be installed prior to paving.
- Backfill compaction shall be according to specified street use.
- Tack coat requirements shall be determined by the City Engineer.
- Sidewalks and wheelchair ramps within the curb returns shall be constructed wherever a new curb return is constructed.
- If curb is depressed for a driveway, the driveway shall be constructed prior to acceptance of the curb and gutter.
- Two working days prior to any excavation, contractor must contact Line Locating Service, 765-1234, for location of existing utilities.
- Prior to construction, the contractor shall excavate and verify the horizontal and vertical locations of all obstructions. Should a conflict exist, the contractor shall notify the engineer or surveyor so that the conflict can be resolved with a minimum amount of delay.



APPROVED FOR CONSTRUCTION BY

Richard S. Hill
CITY ENGINEER

6/14/82
DATE

