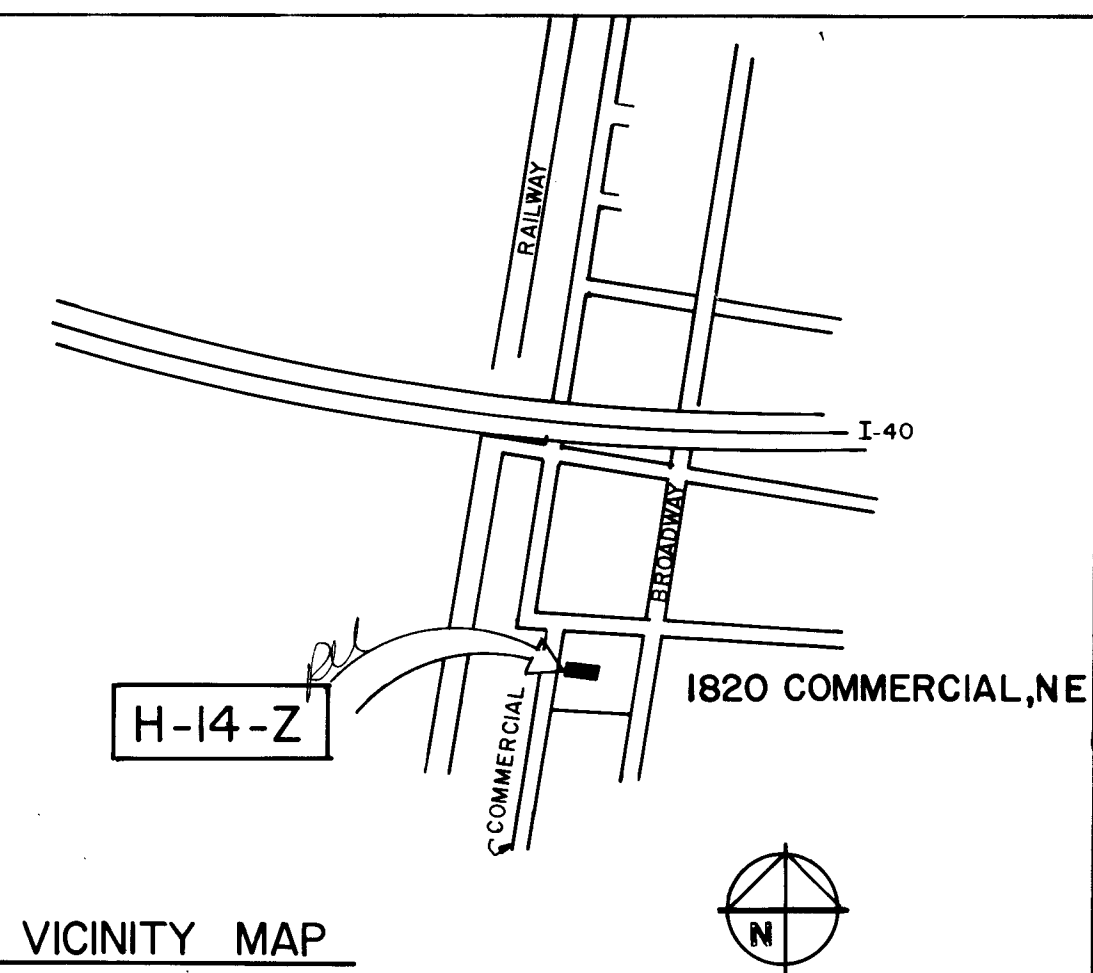


MEZZANINE ADDITION  
TO THE  
STREET SWEEPER MAINTENANCE BUILDING  
SATELLITE #2  
for the  
TRANSPORTATION DEPARTMENT  
STREET DIVISION  
CITY of ALBUQUERQUE  
ALBUQUERQUE, NEW MEXICO



LEGAL DESCRIPTION

TRACT NUMBER 6A  
FRANCISCAN ADDITION  
ALBUQUERQUE, NEW MEXICO

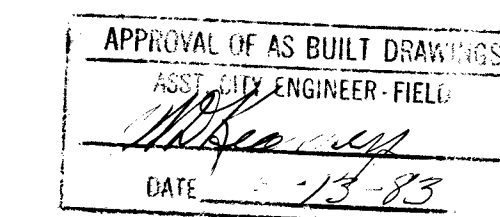
GENERAL NOTES

DRAWING INDEX:

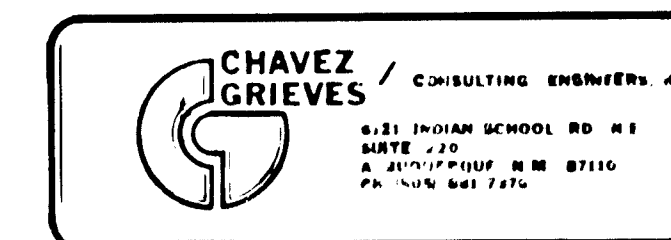
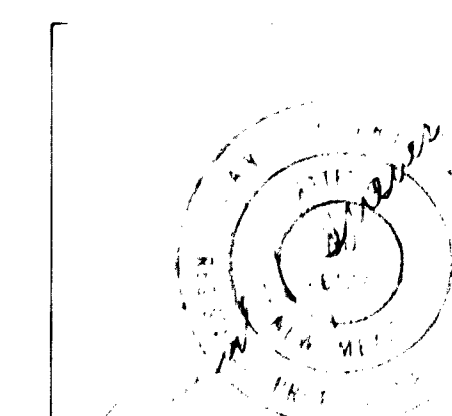
SHEET #	TITLE
1	SITE PLAN AND DESIGN DATA
2	FOUNDATION PLAN AND DETAILS; GENERAL STRUCTURAL NOTES
3	REMOVAL PLAN; NEW FLOOR AND MEZZANINE PLAN; SCHEDULES AND DETAILS
4	BUILDING AND STAIR ELEVATIONS AND DETAILS
5	SECTIONS AND DETAILS
6	ELECTRICAL PLANS
7	ELECTRICAL NOTES AND DETAILS
8	MECHANICAL PLANS
9	MECHANICAL NOTES AND DETAILS

APPROVED FOR CONSTRUCTION: Richard S. Heller  
RICHARD S. HELLER, P.E., CITY ENGINEER

APPROVED FOR CONSTRUCTION: George E. Paul  
GEORGE E. PAUL, STREET ENGINEER, TRANSPORTATION DEPT.



REV	DATE	BY	ENGINEER	DATE	USER	DEPARTMENT	DATE	APPROVED	DATE



PROJECT NO. 1563

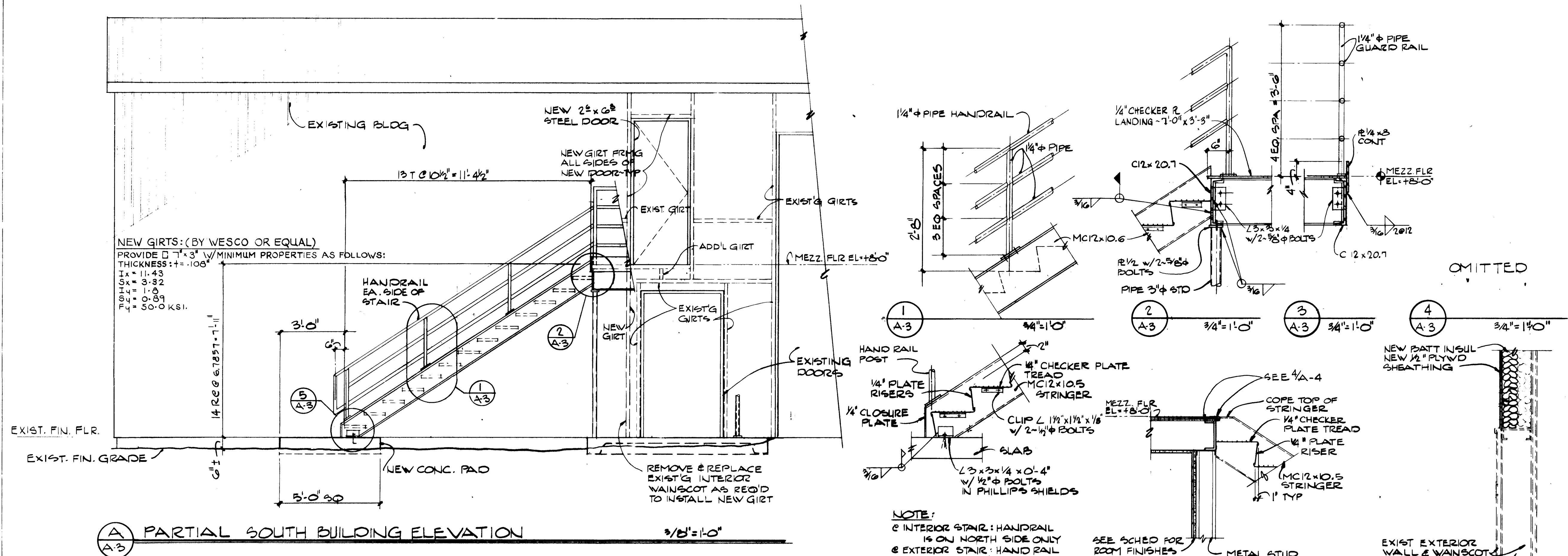
APPROVED FOR  
CONSTRUCTION







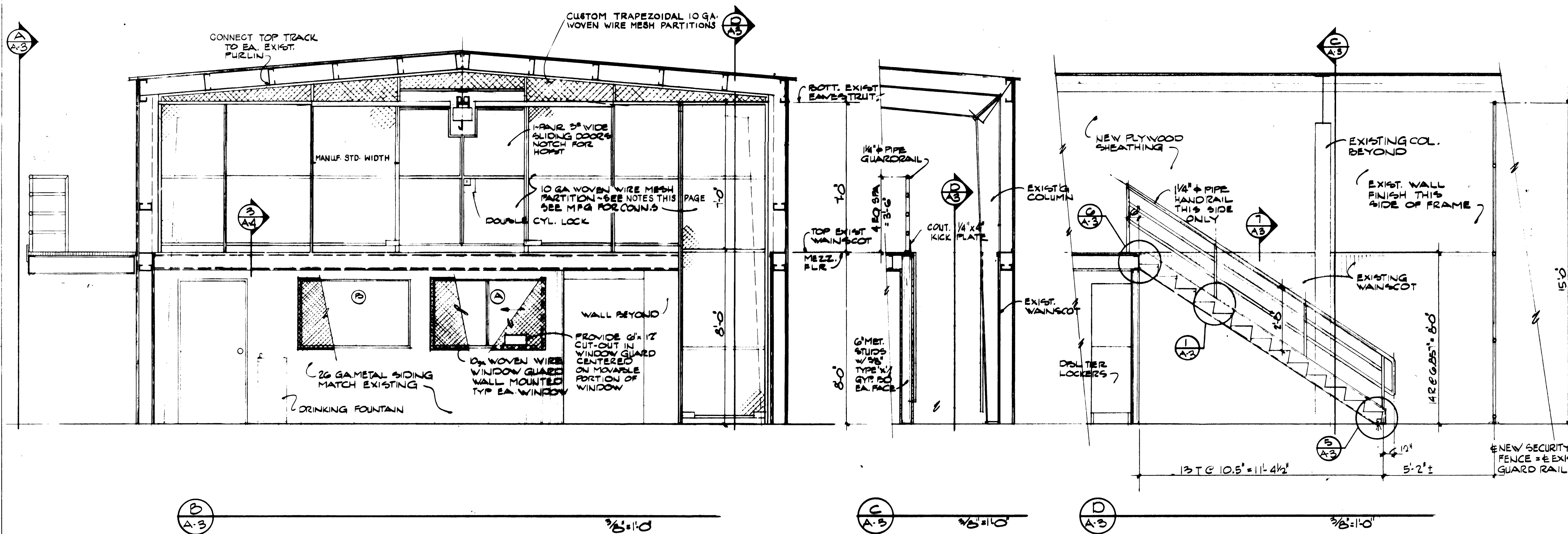




# **A PARTIAL SOUTH BUILDING ELEVATION**

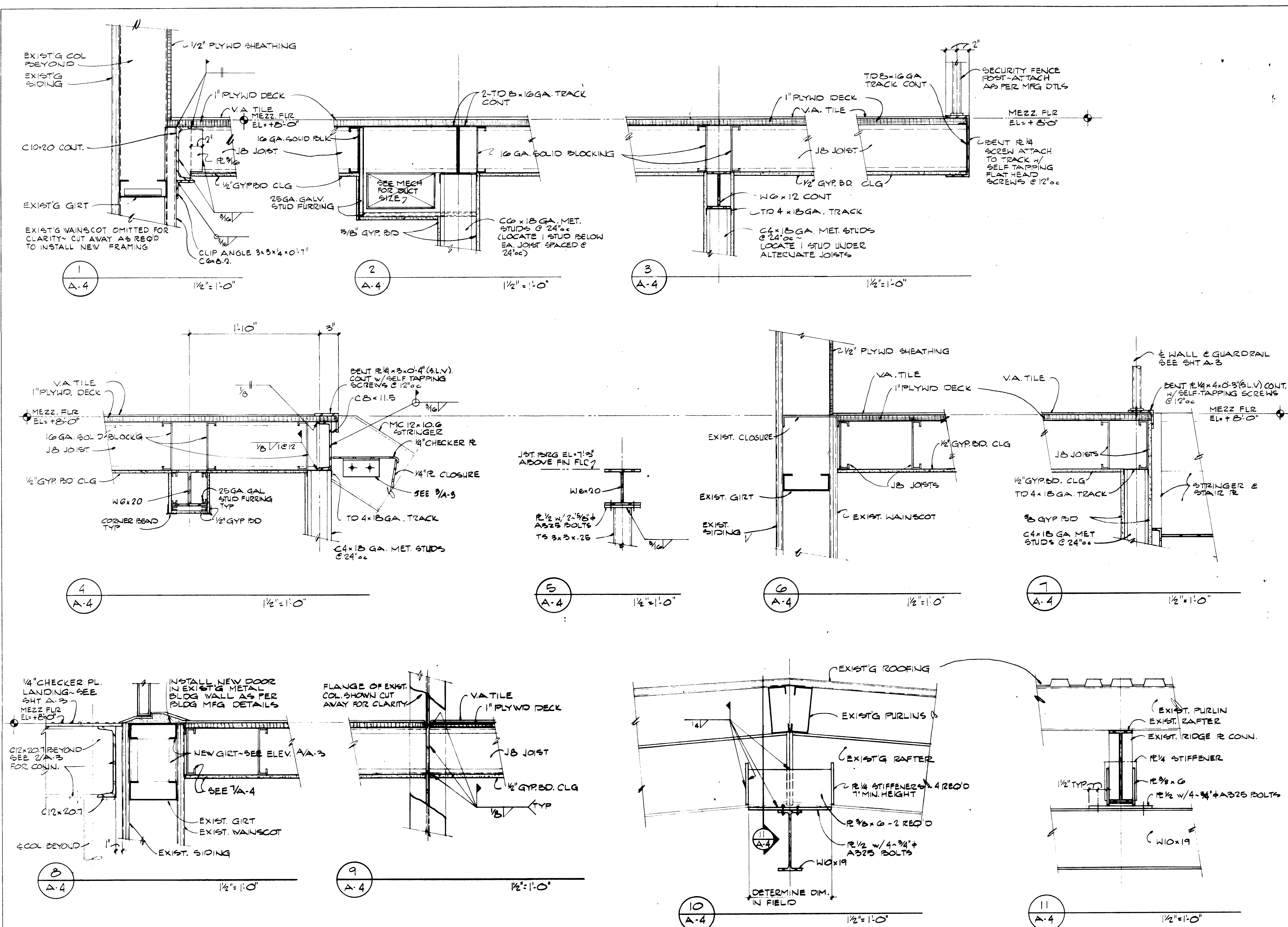
## **NOTES FOR 10 GAUGE WOVEN WIRE MESH PARTITION**

1. PROVIDE PARTITIONS MANUFACTURED BY MEMPHIS WIRE AND IRON WORKS, INC. OR WIRE CRAFTERS, INC. OF LOUISVILLE, KENTUCKY.
2. SPECIFICATIONS: NO. 10 GA. WIRE WOVEN INTO DIAMOND OR RECTANGLE MESH (MAX. MESH IS 2" (in.)) CLINCHED OR WELDED TO ANGLE OR CHANNEL FRAMING POSTS. ALL MEMBERS TO BE DESIGNED TO WITHSTAND UNIFORM BUILDING CODE MINIMUM FORCES. DOORS AND FRAMES TO BE OF SIMILAR CONSTRUCTION AS PER MANUFACTURERS STANDARDS. ALL NECESSARY ERECTION HARDWARE AND ACCESSORIES FOR COMPLETE INSTALLATION OF PANELS, DOORS, TRANSOMS, ETC. TO BE PROVIDED BY CONTRACTOR. INSTALLATION TO BE PERFORMED BY MECHANICS SKILLED IN THE ERECTION OF WIRE MESH PARTITIONS
3. CONTRACTOR TO FIELD DETERMINE ALL NECESSARY DIMENSIONS FOR MANUFACTURE OF WIRE MESH PARTITIONS.



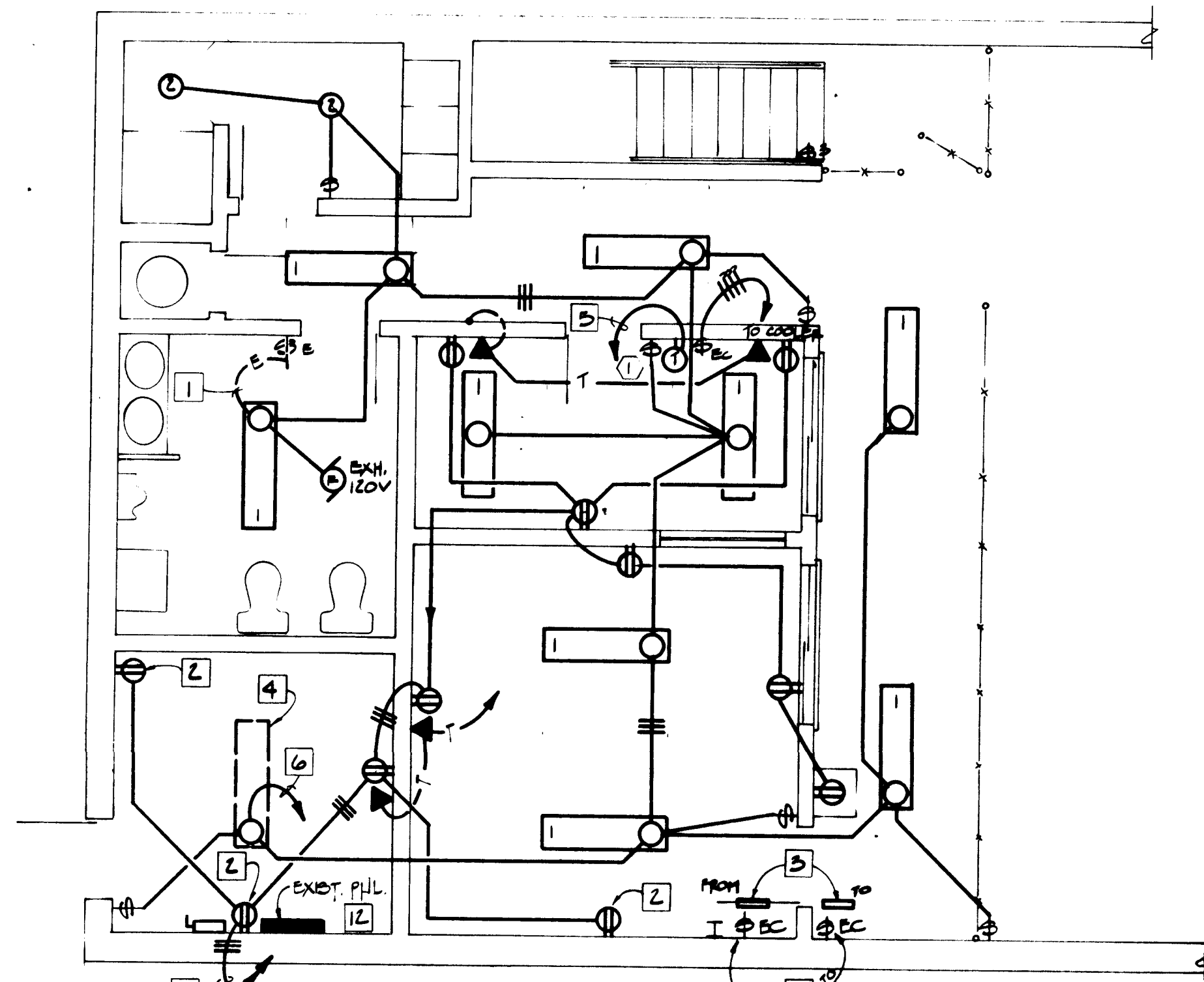
AS BUILT INFORMATION			BENCH MARKS			SURVEY INFORMATION			ENGINEER'S SEAL			REVISIONS			CITY OF ALBUQUERQUE		
DATE	BY	NO.	DATE	BY	NO.	DATE	BY	NO.	DATE	BY	NO.	DATE	BY	NO.	MUNICIPAL DEVELOPMENT DEPARTMENT		
															ENGINEERING DIVISION		
TITLE:			MEZZANINE ADDITION TO THE STREET SWEEPER			BUILDING AND STAIR ELEVATIONS AND DETAILS			APPROVALS			APPROVALS			DRAWING		
MAINTENANCE BUILDING - SATELLITE #2			DESIGNED BY			CHECKED BY			City Engineer			City Engineer			NO		
			DATE			DATE			A.C.E. Design			DATE			1563		
			DATE			DATE			A.C.E. Hydrology			DATE			MAP NO.		
			DATE			DATE			See Cover Sheet			DATE			SHEET		
			DATE			DATE			Liquid Waste			DATE			A-3		
			DATE			DATE			Traffic			DATE			OF		
			DATE			DATE			Water			DATE			10		





AS BUILT INFORMATION			BENCH MARKS			SURVEY INFORMATION			ENGINEER'S SEAL																										
DATE	BY	NO.	DATE	BY	NO.	DATE	BY	NO.	DATE	BY	NO.																								
<div style="display: flex; justify-content: space-between;"> <div> <p>26 15630583</p> <p>DESIGNED BY CHAVEZ-GREYES DRAWN BY CB CHECKED BY DHG</p> </div> <div> <p>REVISIONS</p> <p>NO. DATE</p> <p>1 5/20/83 Record Drawings</p> </div> </div>																																			
<p>CITY OF ALBUQUERQUE MUNICIPAL DEVELOPMENT DEPARTMENT ENGINEERING DIVISION</p> <p>TITLE: MEZZANINE ADDITION TO THE STREET SWEEPER MAINTENANCE BUILDING - SATELLITE #2</p> <p>SECTIONS AND DETAILS</p> <table border="1"> <thead> <tr> <th>APPROVALS</th> <th>ENGINEER</th> <th>DATE</th> <th>APPROVALS</th> <th>ENGINEER</th> <th>DATE</th> </tr> </thead> <tbody> <tr> <td>City Engineer</td> <td>See Cover Sheet</td> <td> </td> <td>Liquid Waste</td> <td>See Cover Sheet</td> <td> </td> </tr> <tr> <td>ACE-Design</td> <td> </td> <td> </td> <td>Traffic</td> <td> </td> <td> </td> </tr> <tr> <td>ACE-Hydrology</td> <td> </td> <td> </td> <td>Water</td> <td> </td> <td> </td> </tr> </tbody> </table> <p>DRAWING NO. 1563 MAP NO. SHEET A-4 OF 10</p>												APPROVALS	ENGINEER	DATE	APPROVALS	ENGINEER	DATE	City Engineer	See Cover Sheet		Liquid Waste	See Cover Sheet		ACE-Design			Traffic			ACE-Hydrology			Water		
APPROVALS	ENGINEER	DATE	APPROVALS	ENGINEER	DATE																														
City Engineer	See Cover Sheet		Liquid Waste	See Cover Sheet																															
ACE-Design			Traffic																																
ACE-Hydrology			Water																																

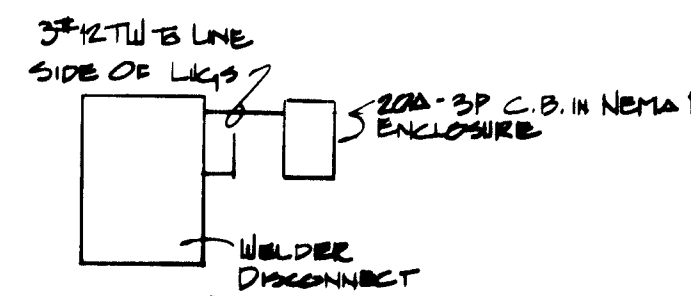
PROJECT NO. 1563



FLOOR PLAN - POWER & LIGHTING  
SCALE: 1/4" = 1'-0"

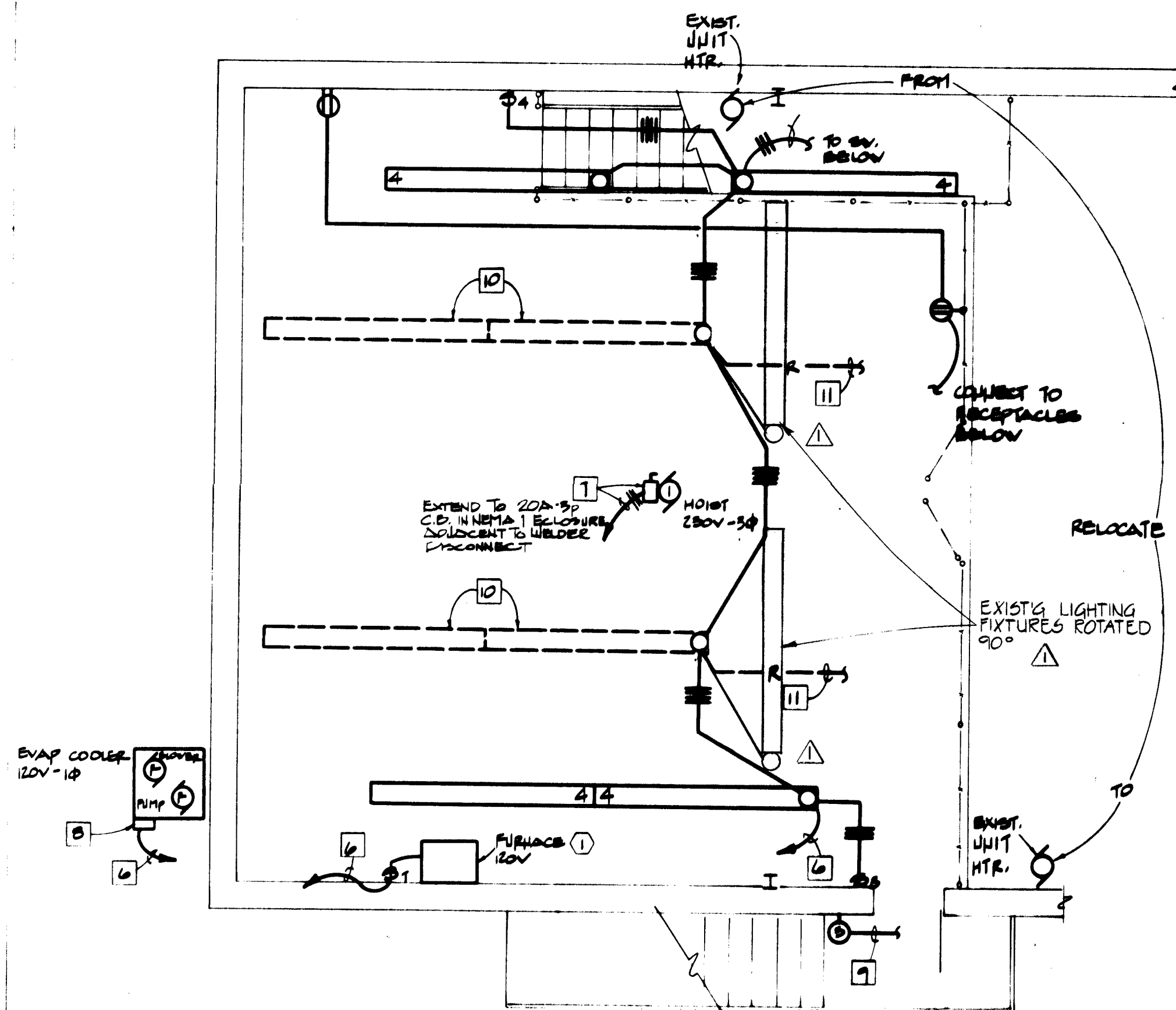
- KEYED NOTES**
- EXISTING SWITCH AND CONDUCTORS UP TO NEW LIGHTING FIXTURE. MAKE CONNECTIONS AS REQ.
  - SURFACE MOUNT OUTLET ON EXISTING WALL.
  - RELOCATE EXISTING COMPONENTS INDICATED TO NEW LOCATION SHOWN (INTRUSION ALARM AND EVAP. COOLER SW.)
  - EXISTING LIGHTING FIXT. TO REMAIN. PROVIDE SWITCHING AND CIRCUITRY AS INDICATED.
  - EXTEND 1/2" C. WITH CONTROLS CONDUCTORS AS REQ. TO FURNACE.
  - EXTEND TO EXISTING PANEL - CONNECT TO "SPARE" 20A-1P BREAKER.
  - 30A-3P NEMA 1 FUSIBLE DISCONNECT. LOCATE AS REQ. FUSE TO SUIT MOTOR. MAKE CONNECTIONS AS REQ.
  - MIDWEST #P220SF FUSIBLE EVAP. COOLER SWITCH. FUSE TO SUIT.
  - CONNECT TO ADJACENT EXTERIOR LIGHTING FIXTURE.
  - EXISTING FIXTURES TO REMAIN.
  - DISCONNECT EXISTING FIXTURES FROM PRESENT CIRCUIT. RE-CIRCUIT AS INDICATED.
  - PROVIDE 6 20A-1P BREAKERS AT EXISTING SPACES FOR CONNECTION OF NEW CIRCUITS. NEW BREAKERS SHALL BE COMPATIBLE WITH EXISTING PANEL.

- ELECTRICAL SYSTEM SYMBOLS**
- FLUORESCENT FIXTURE AND OUTLET. NUMBER REFERS TO FIXTURE SCHEDULE.
  - LIGHTING FIXTURE, CEILING OUTLET. NUMBER REFERS TO FIXTURE SCHEDULE.
  - LIGHTING FIXTURE, WALL OUTLET. NUMBER REFERS TO FIXTURE SCHEDULE. UP AS SCHEDULED UNLESS OTHERWISE NOTED ON THE DRAWINGS.
  - DUPLEX RECEPTACLE, NEMA 5-15R, 15 AMP/125 VOLT. UP 8" UNLESS OTHERWISE NOTED ON THE DRAWINGS.
  - SINGLE POLE TOGGLE SWITCH. UP 48" TO BOTTOM.
  - THREE WAY TOGGLE SWITCH. UP 48" TO BOTTOM.
  - FOUR WAY TOGGLE SWITCH. UP 48" TO BOTTOM.
  - MANUAL MOTOR SWITCH WITH PILOT LIGHT. SIZE O.L.s TO PROTECT MOTOR. UP 48" TO BOTTOM OR AS NOTED ON THE DRAWINGS.
  - SAFETY SWITCH.
  - ELECTRICAL PANELBOARD. REFER TO PANEL SCHEDULES FOR DESCRIPTION.
  - ELECTRIC MOTOR OUTLET. NUMBER INDICATES HORSEPOWER.
  - TELEPHONE OUTLET. UP 8" TO BOTTOM.
  - WIRING RUN CONCEALED IN CONDUIT. HASH MARKS INDICATE 1 NEUTRAL, 20 CONDUCTORS, 'ARROWS AND SUBSCRIPT INDICATED HOME RUN TO PANEL "A" CIRCUITS NO. 1 & 3.
  - CONDUIT RUN.
  - TELEPHONE CONDUIT RUN CONCEALED. 3/4" MINIMUM.
  - TELEPHONE CONDUIT HOME RUN CONCEALED TO TELEPHONE TERM BD. 1" CONDUIT MINIMUM.
  - EXISTING WIRING TO REMAIN.
  - EXISTING SWITCH TO REMAIN.
  - THERMOSTAT BY MECHANICAL. UP 5'0" TO BOTTOM.
  - MECHANICAL EQUIPMENT SYMBOL. REFER TO MECH. EQUIP. SCHEDULES ON MECHANICAL SHEETS IN THE DRAWINGS.



HOMERUN CONNECTION SCHEMATIC

PICTURE SCHEDULE			
DESCRIPTION	LAMPS	MOUNTING	REMARKS
1 LITHONIA #WA-240A	2-F40/LW/RS/SS	SURFACE	ADVANCE MARK III
2 PRESCOLITE #9427	1-20W/FC6T9	SURFACE	
3 HUBBELL #NRG-121-HP	1-50W/HPS	SURFACE UP 6'0" ABOVE LANDING	
4 LITHONIA #DD-296A	2-F96T12/CW	SURFACE	



MEZZAINE PLAN  
SCALE: 1/4" = 1'-0"

26 15630683

CITY OF ALBUQUERQUE  
MUNICIPAL DEVELOPMENT DEPARTMENT  
ENGINEERING DIVISION

TITLE: MEZZANINE ADDITION TO THE STREET SWEEPER  
MAINTENANCE BUILDING - SATELLITE # 2

ELECTRICAL PLANS

DRAWING NO. 1563 MAP NO. SHEET E-1 OF 10

DATE: OCT 14, 1982  
BY: CAK  
CHECKED: FR  
DESIGNED: FR

REVISIONS

5/20/83 Record Draw. 2/83

REMARKS

DATE: OCT 14, 1982  
BY: CAK  
CHECKED: FR  
DESIGNED: FR



## 11. RACEWAYS AND FITTINGS:

5. ELECTRICAL DISTRIBUTION SYSTEM: Outlets shall be installed in the locations shown on the drawings. The Contractor shall study the general building plans in relation to the spaces surrounding each outlet in order that his work may fit other work required by these specifications. When necessary, the Contractor shall relocate outlets so that, when fixtures or other fittings are installed, they will not interfere with other work or equipment. Zinc-coated or cadmium plated sheet steel boxes shall be used unless otherwise specifically mentioned. Required boxes shall be installed in rigid and satisfactory manner, either by wood screws in masonry or shields on masonry, or machine screws on steel work. Fixture outlet boxes on finished furred ceilings shall be fitted with open covers set to come flush as indicated on the drawings. Switch, telephone

22. OTHER SYSTEMS: Other systems shall be as specifically indicated on the drawings. All empty conduits shall be provided with #9 iron pull wire.

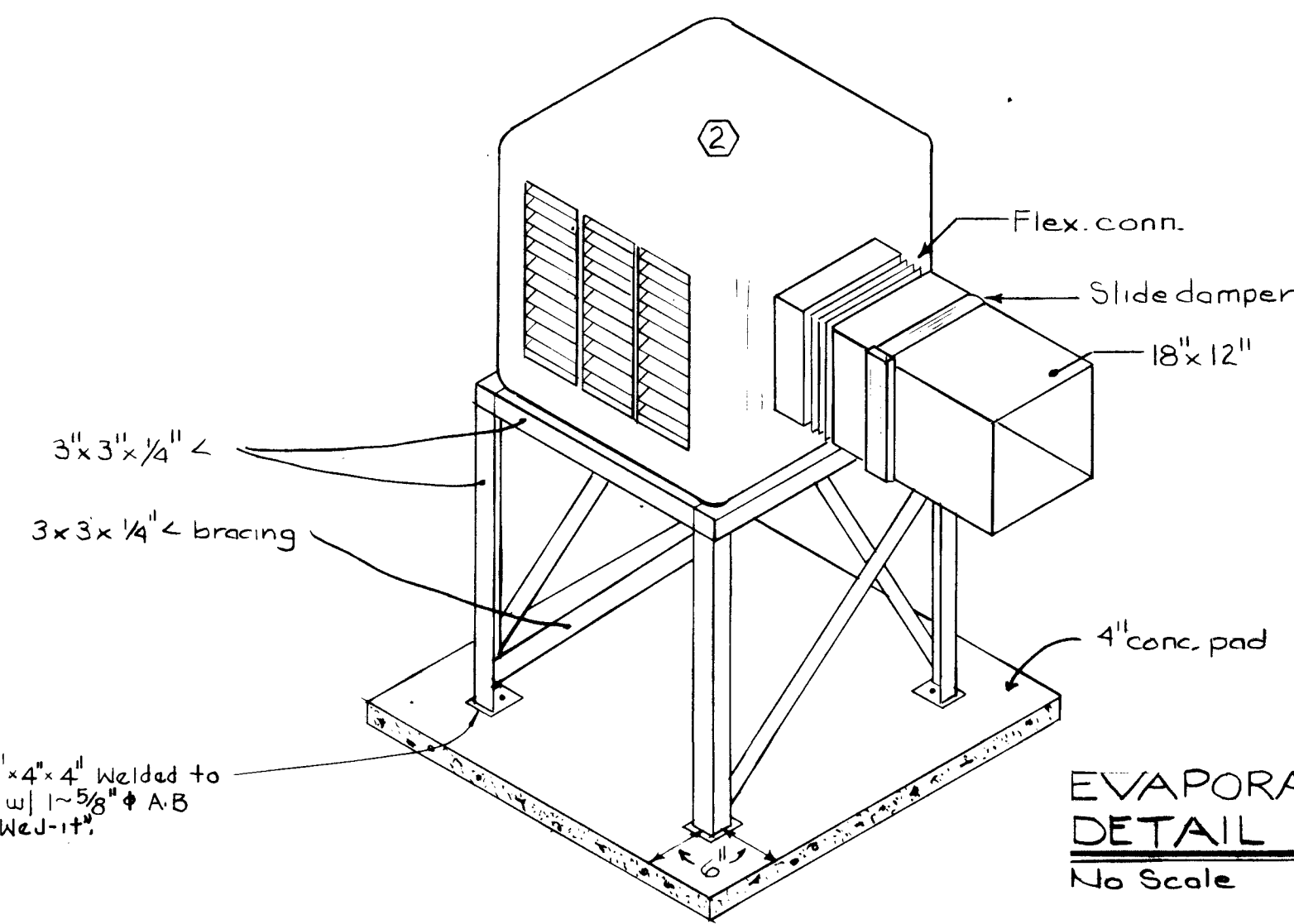
26. **GUARANTEE:** The Contractor shall guarantee all workmanship, materials and equipment for a period of one year from the date of completion and acceptance. In the event defects appear during this period, the Contractor shall immediately upon receipt of notice, make necessary adjustment, repairs and replacements without charge.

END OF SECTION 16

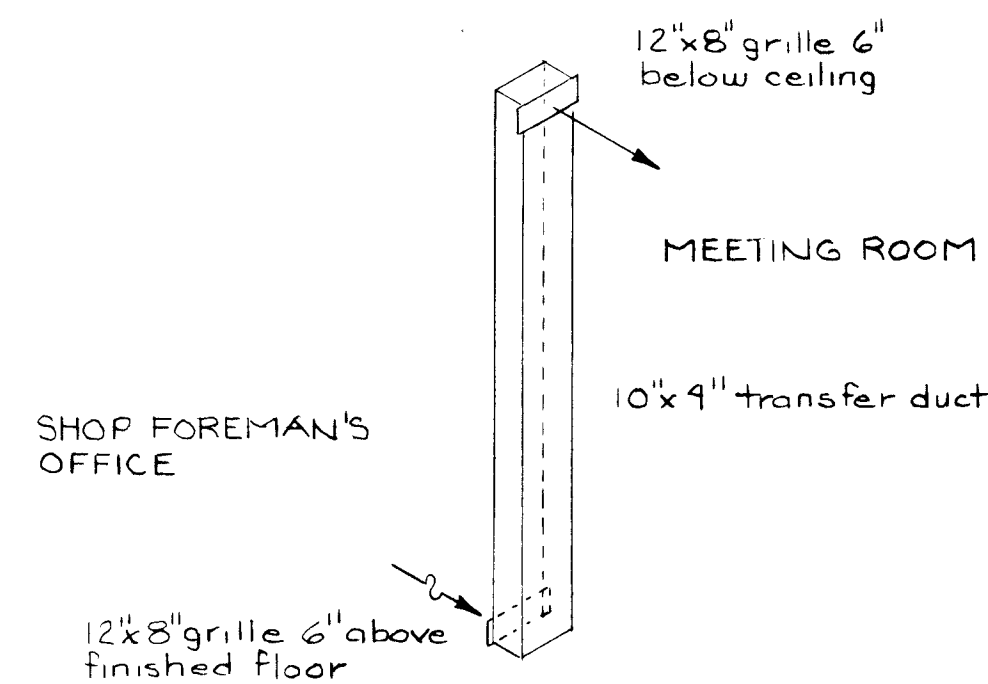
26 15630783

CITY OF ALBUQUERQUE			
MUNICIPAL DEVELOPMENT DEPARTMENT			
ENGINEERING DIVISION			
TITLE		MEZZANINE ADDITION TO THE STREET SHEEPER MAINTENANCE BUILDING - SATELLITE # 2	
ELECTRICAL NOTES			
APPROVAL	DATE	APPROVALS	ENGINEER
City Engineer		liquid Waste	
Auto. Design	See Cover Sheet	Traff.	See Cover Sheet
Auto. Hydrology		Water	
DRAWING NO	1563	MAP NO	SHEET E-2 OF 10

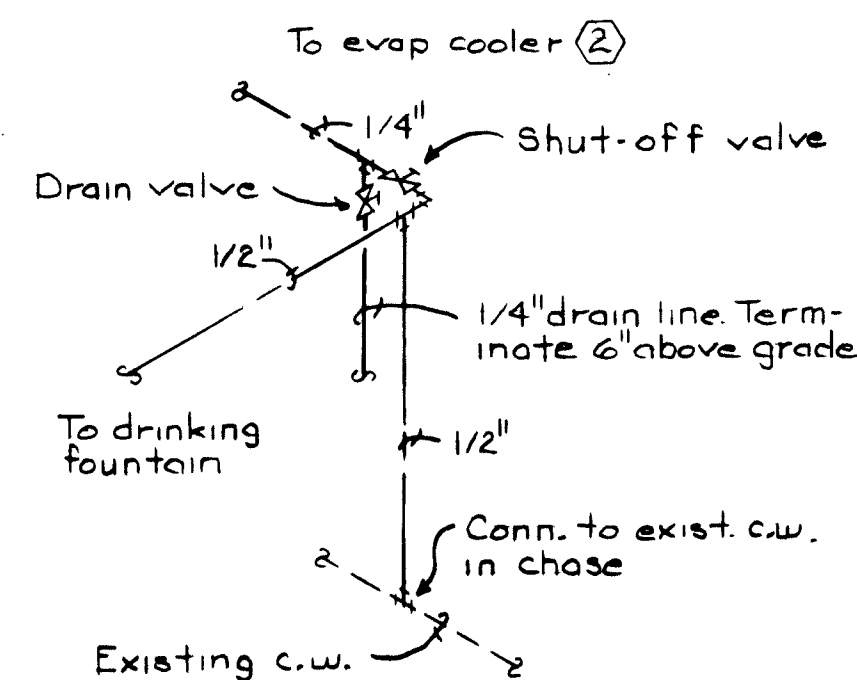




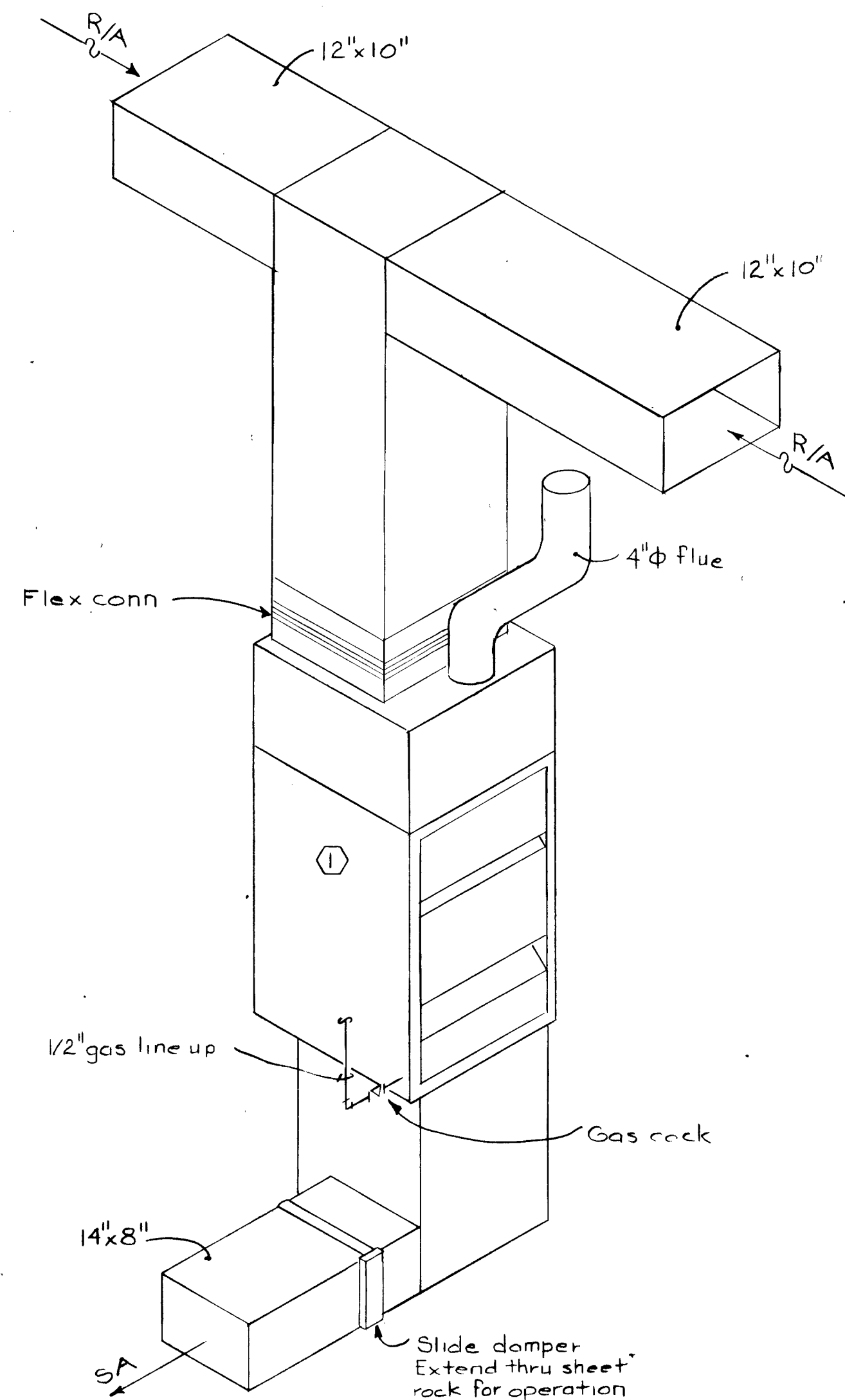
**EVAPORATIVE COOLER  
DETAIL**  
No Scale



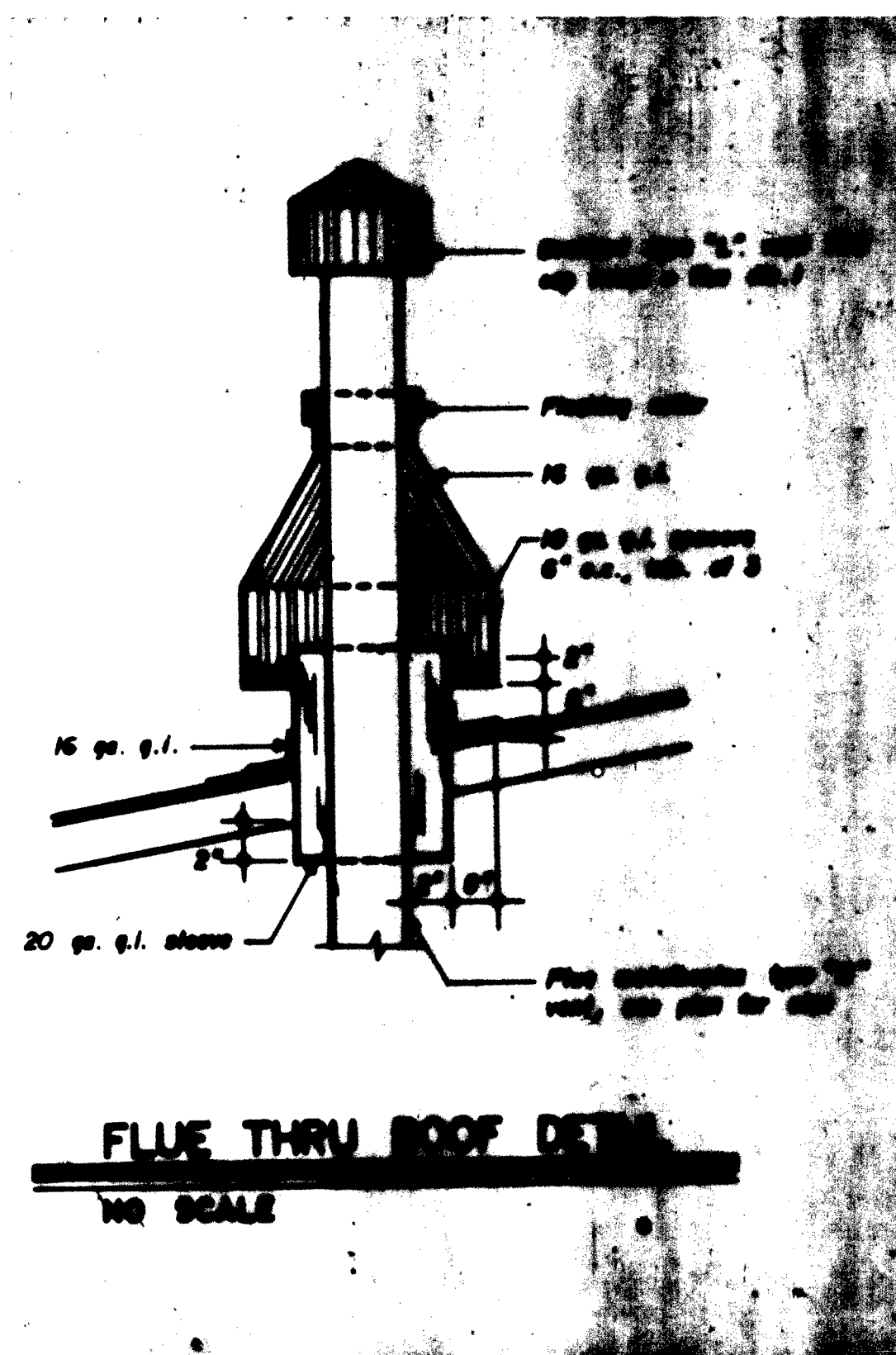
**TRANSFER DUCT DETAIL**  
No Scale



**DRAIN VALVE DETAIL**  
No Scale



**FURNACE DETAIL**  
No Scale



**FLUE THRU ROOF DETAIL**  
NO SCALE

EQUIPMENT SCHEDULE	
SYMBOL	DESCRIPTION
①	Furnace: Downflow, natural gas fired, ASH approved with 100% safety cut-off and certified for operation at 5500' elevation, 50,000 BTUH input, 720 cfm at .4 s.p., 183 h.p., 115v-10. Provide with filter, wall mounted thermostat. Day & Night model 3968024050.
②	Evaporative Cooler: Slide discharge, complete with pads, pump, float and asphalt-coated reservoir. 1460 cfm at .5 s.p., 1.0 h.p., 2-speed, 115v-10. Arctic Circle model ES830.
③	Exhaust Fan: Ceiling mounted, all metal housing with aluminum blade wheel, backdraft damper, disconnect and wall cap, 103 cfm at .2 s.p., 1/50 h.p., 115v-10. Pace model DD-1506.

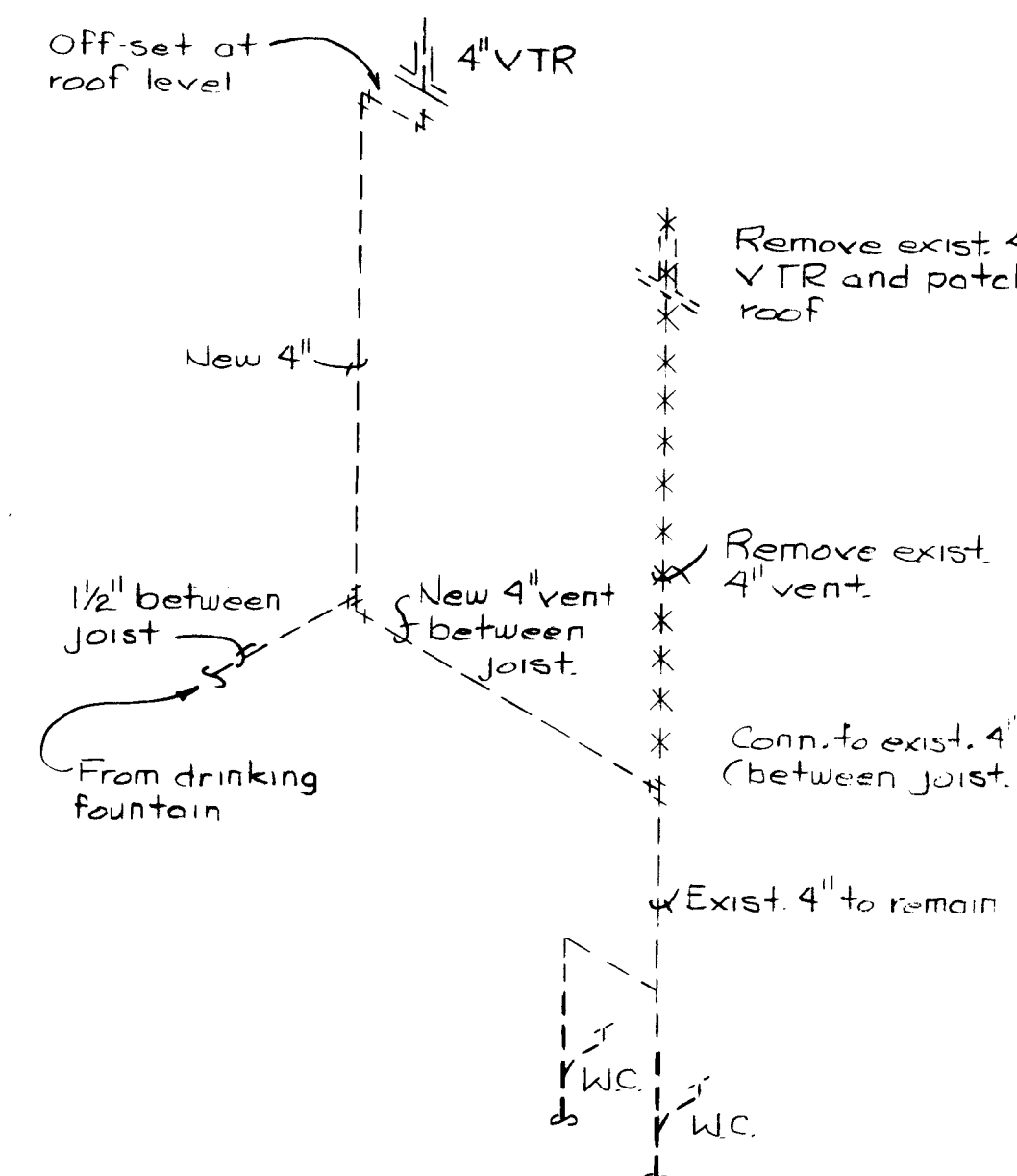
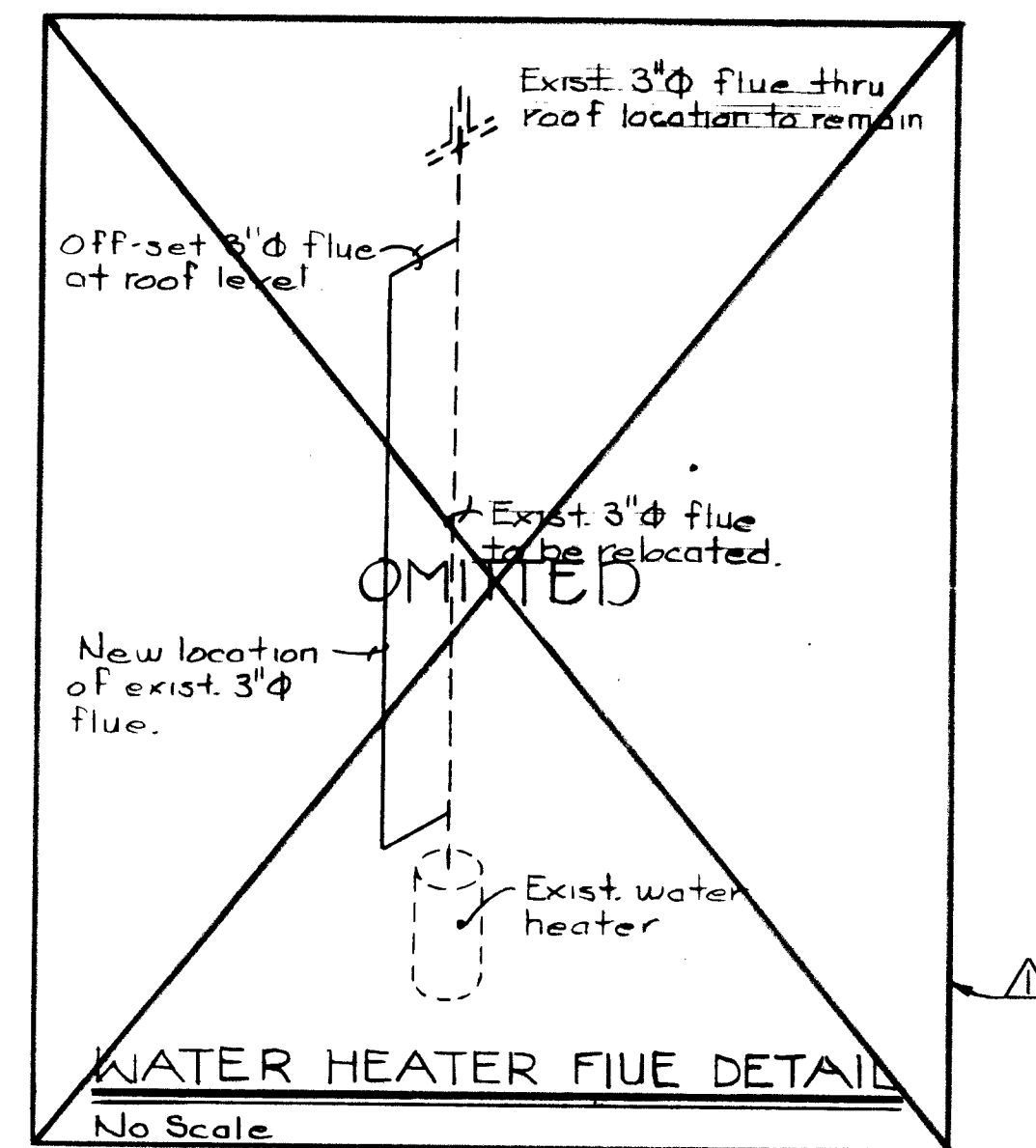
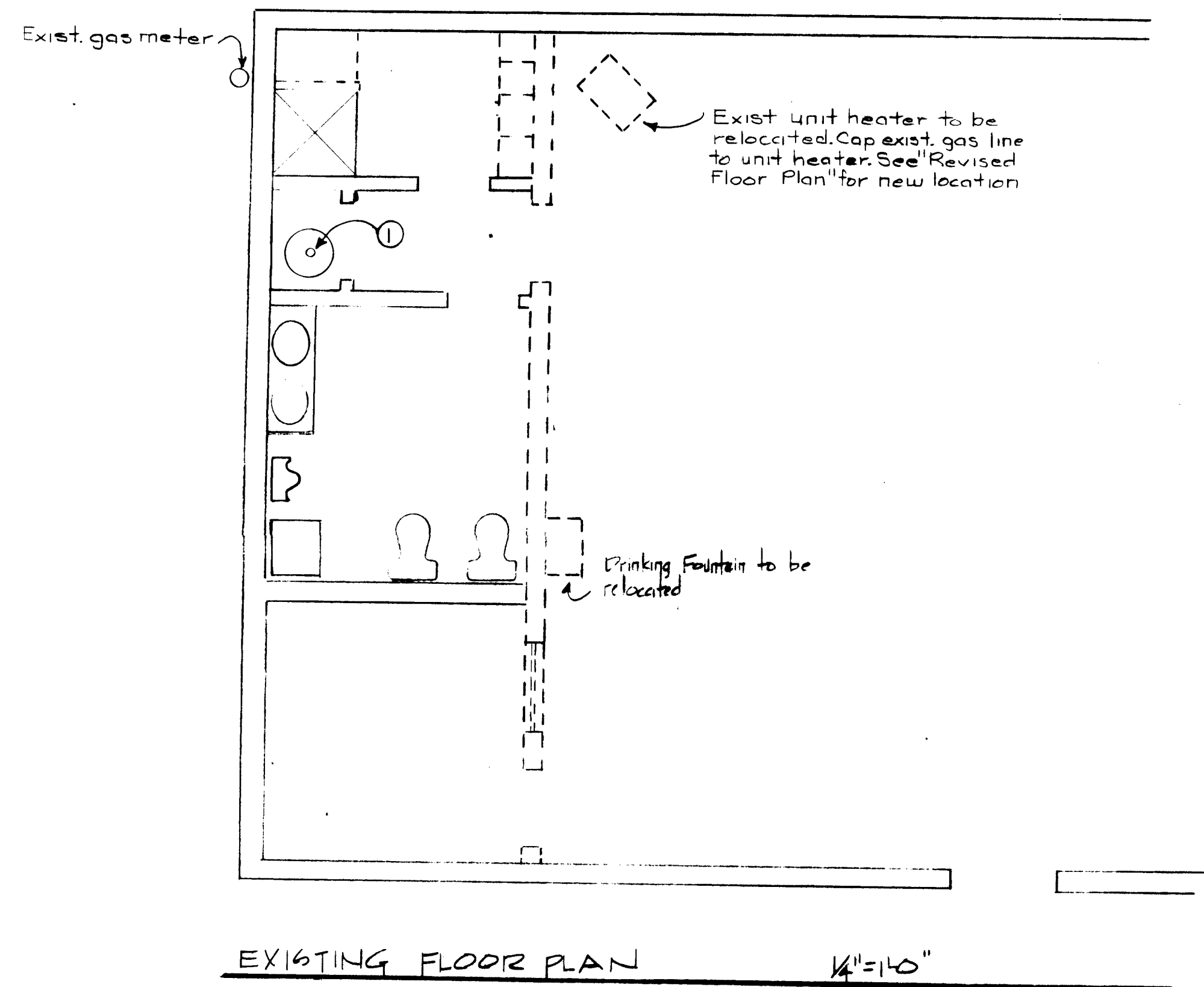
SPECIFICATIONS	
1.	All mechanical and plumbing work shall be done in accordance with the latest Uniform Code requirements.
2.	All ductwork shall be galvanized iron ducts with standard joints.
3.	Insulate heating system return air duct with 1" duct liner board fastened with metal stick clips.
4.	All domestic water supply piping shall be type "L" copper with soldered bronze fittings.
5.	All hot water piping and cold water piping in unheated spaces shall be insulated with 1/2" fiberglass insulation with ASJ covering.
6.	Gas piping shall be black steel pipe with malleable iron screwed fittings.

26 15630883

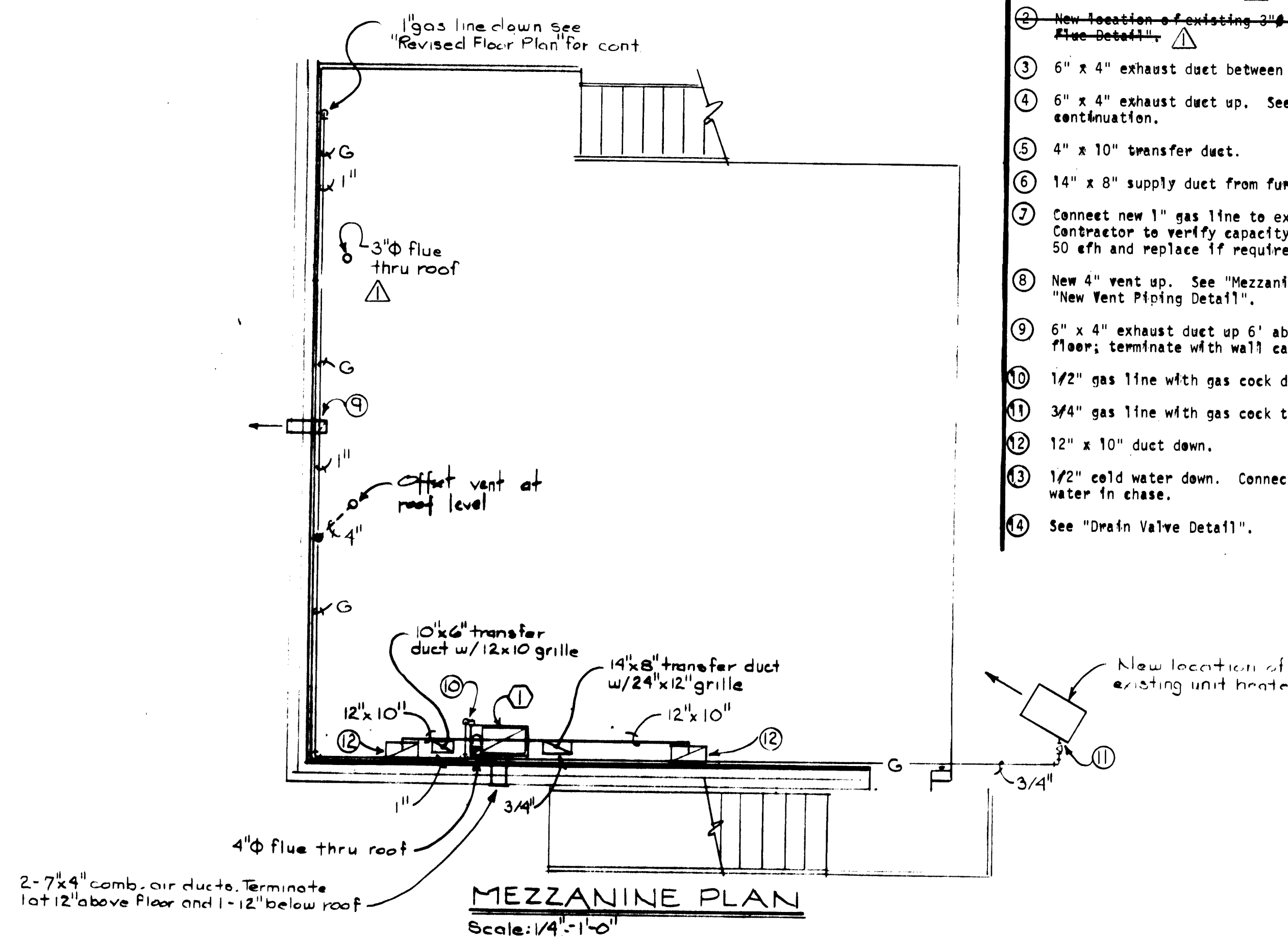
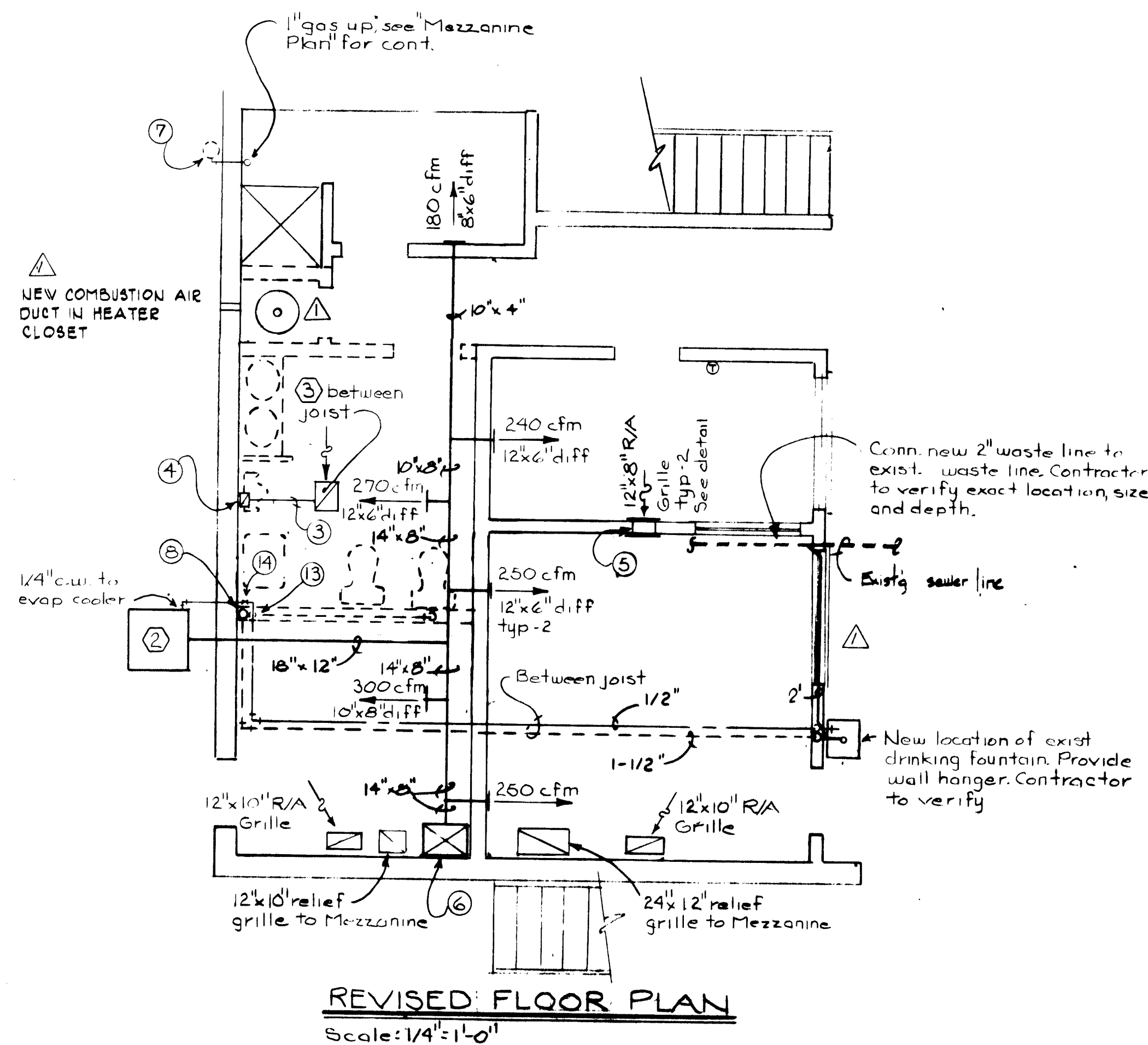
RECORD DRAWING  
This drawing portrays the construction as built. This firm is not responsible for modification or additions by others.

CITY OF ALBUQUERQUE MUNICIPAL DEVELOPMENT DEPARTMENT ENGINEERING DIVISION			
TITLE: MEZZANINE ADDITION TO THE STREET SWEEPER MAINTENANCE BUILDING - SATELLITE #2 MECHANICAL NOTES AND DETAILS			
APPROVALS	ENGINEER	DATE	APPROVALS
City Engineer	See Cover Sheet	See Cover Sheet	Liquid Waste
ACE-Design	See Cover Sheet	See Cover Sheet	Traffic
ACE-Hydrology	See Cover Sheet	See Cover Sheet	Water
DRAWING NO.	1563	MAP NO.	
SHEET	M-1	OF	10

PROJECT NO. 1563



GRILLE AND REGISTER SCHEDULE	
Supply Diffuser Schedule:	Kraeger series 5800-SOH with O.B.D.
Return Air Grille:	Kraeger series ALS 585 V with O.B.D.



- NOTES:
- Existing 3" flue to be relocated. See Revised Floor Plan for new location.
  - New location of existing 3" flue. See "Water Heater FUE DETAIL".
  - 6" x 4" exhaust duct between joist.
  - 6" x 4" exhaust duct up. See "Mezzanine Plan" for continuation.
  - 4" x 10" transfer duct.
  - 14" x 8" supply duct from furnace.
  - Connect new 1" gas line to existing gas meter. Contractor to verify capacity of meter for additional 50 cfm and replace if required.
  - New 4" vent up. See "Mezzanine Plan" for cont. and "New Vent Piping Detail".
  - 6" x 4" exhaust duct up 6' above mezzanine finished floor; terminate with wall cap.
  - 1/2" gas line with gas cock down to furnace.
  - 3/4" gas line with gas cock to unit heater.
  - 12" x 10" duct down.
  - 1/2" cold water down. Connect to existing cold water in chase.
  - See "Drain Valve Detail".

26 156309813

RECORD DRAWING  
This drawing portrays the construction As Built. This firm is not responsible for modification or additions by others.

CITY OF ALBUQUERQUE MUNICIPAL DEVELOPMENT DEPARTMENT ENGINEERING DIVISION			
TITLE: MEZZANINE ADDITION TO THE STREET SLEEPER MAINTENANCE BUILDING - SATELLITE # 2 MECHANICAL PLANS			
City Engineer	City Designer	City Hydrographer	City Planner
See Cover Sheet	See Cover Sheet	See Cover Sheet	See Cover Sheet
DRAWING NO. 1563	MAP NO.	SHEET M-2	OF 10