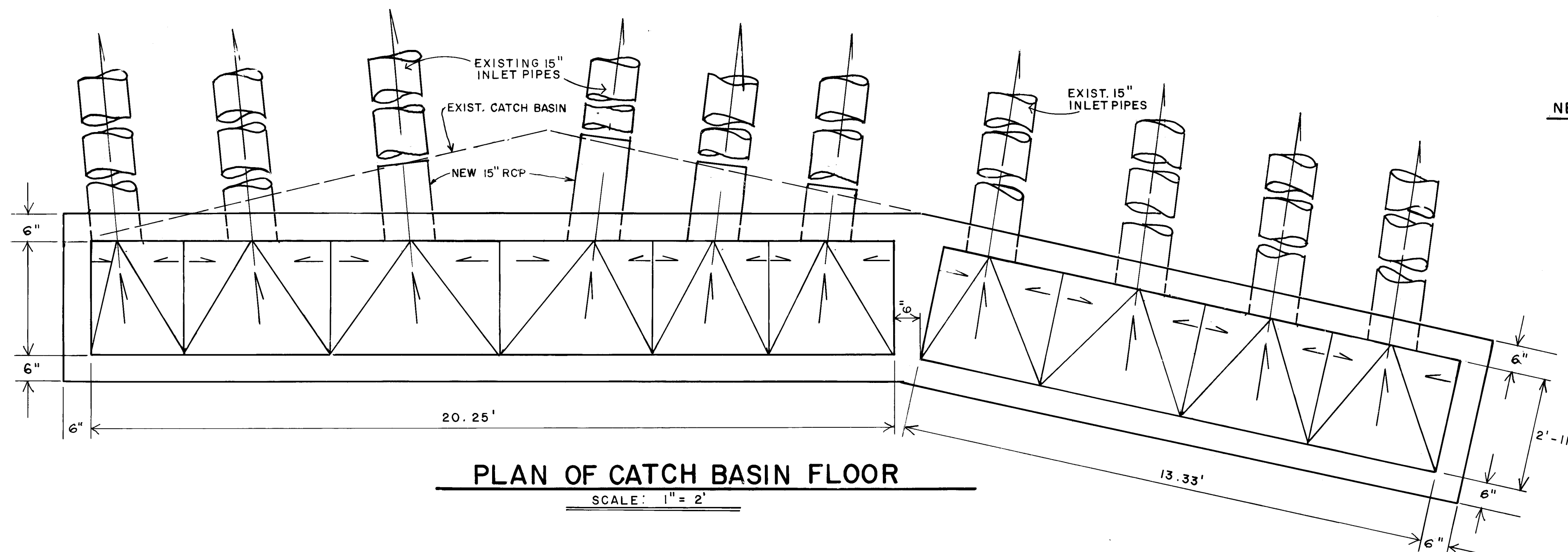
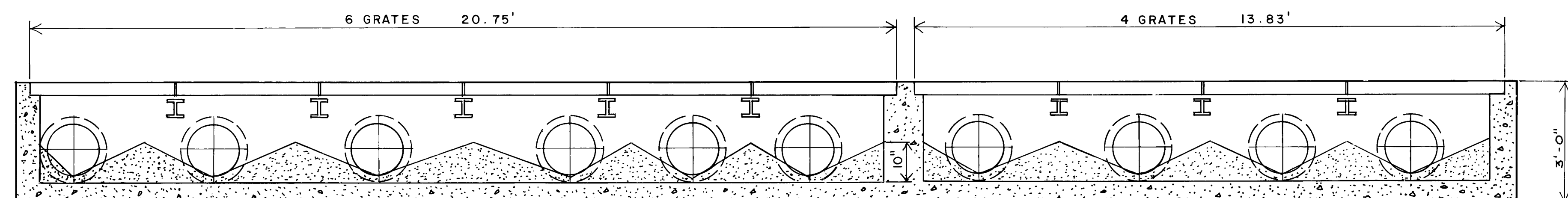


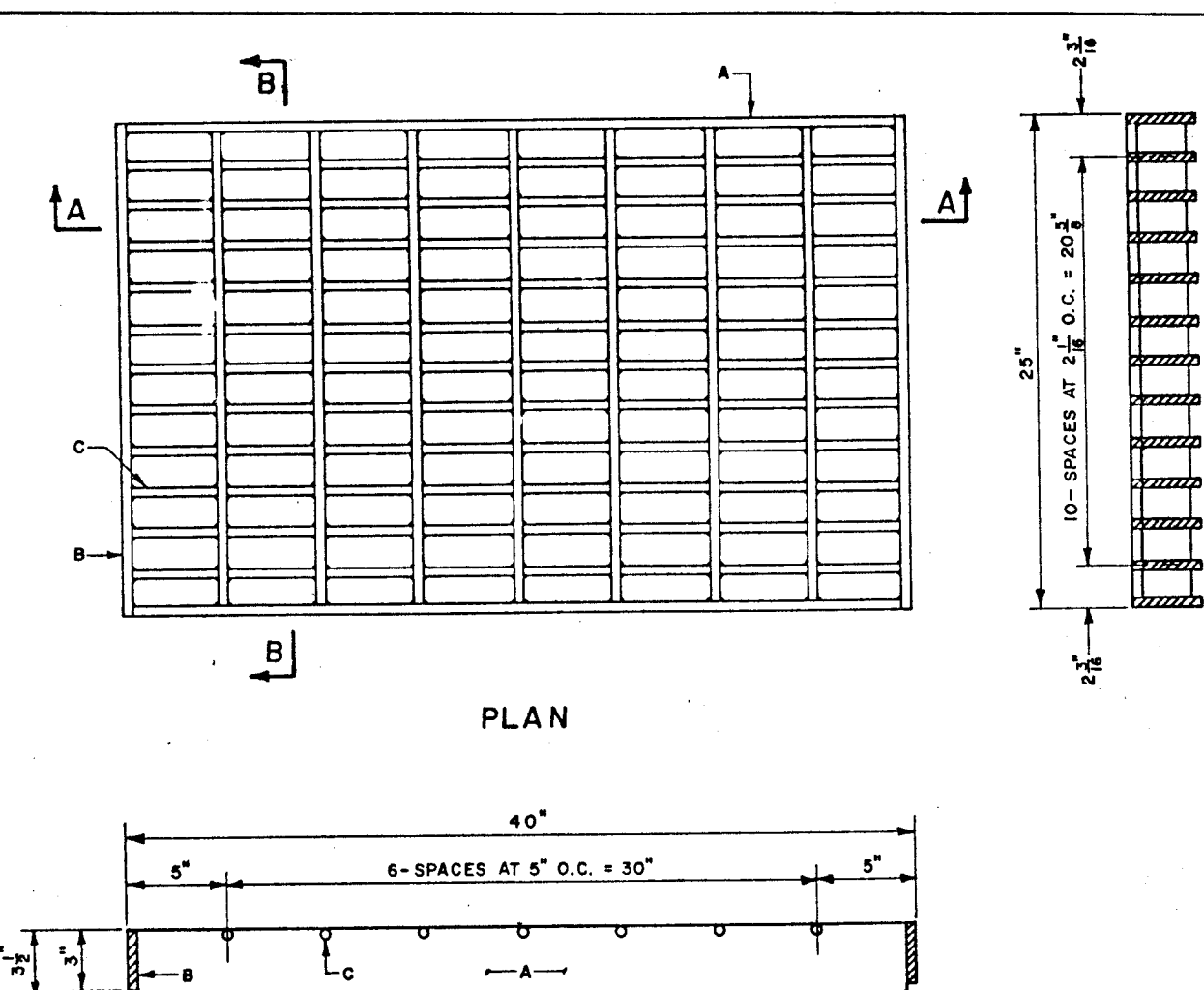
PLAN VIEW  
SCALE: 1" = 5'



PLAN OF CATCH BASIN FLOOR  
SCALE: 1" = 2'

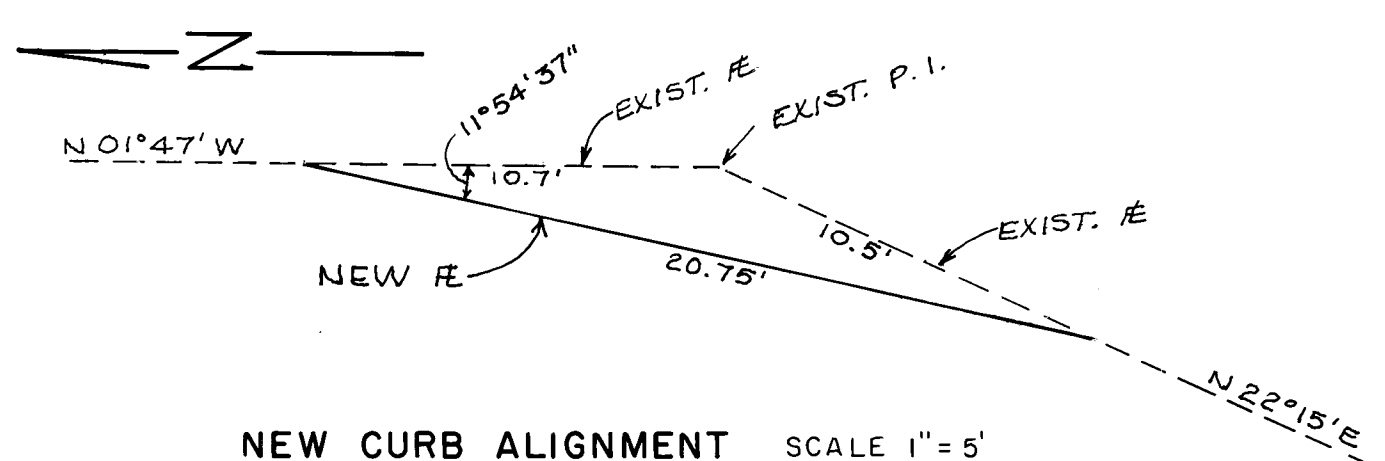


SECTION A - A  
SCALE: 1" = 2'

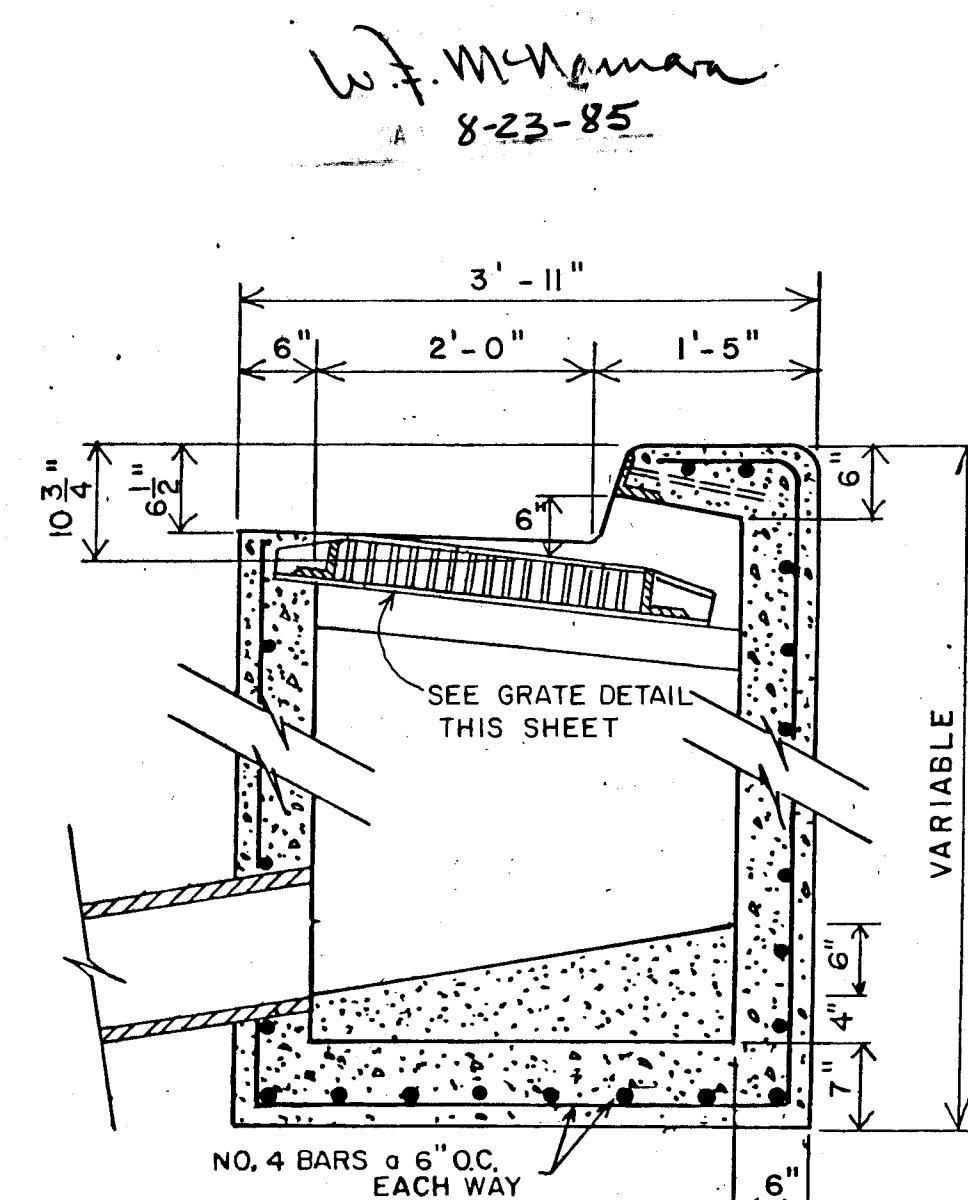


GRATE DETAIL

- GENERAL NOTES:**
1. Finished dimensions 3-1/2" x 25" x 40"
  2. All bars shall be structural grade steel, Class A36
  3. Grate shall be welded with 1/8" fillet weld around both sides of cross bars, 1/4" fillet weld both sides of bearing bars
  4. After cleaning surface of scale, rust, oils, etc., paint grate with shop coat red oxide and two finish coats aluminum paint (AASHO M69)
  5. Damage to paint shall be repaired in an approved manner
  6. Top of cross bars shall be flush with top of grate
  7. Grind welds flush with bearing bars
  8. When installed in frame, tight to one side, other side shall have 5/8" max. opening. Spacers welded to frame may be used if required to keep 5/8" space or less. Weld to frame
- CONSTRUCTION NOTES**
- A. Bearing Bars, (13) 1/2" x 3-1/2" x 39"
  - B. End Bars, (2) 1/2" x 3" x 25"
  - C. Cross Bars, (7) 1/2" Dia. x 24"



NEW CURB ALIGNMENT SCALE 1" = 5'



SECTION B - B  
SCALE: 3/4" = 1' - 0"

**LOCATION MAP L-14**

**NOTICE TO CONTRACTORS**

1. All work detailed on these plans to be performed under contract shall, except as otherwise stated or provided for herein, be constructed in accordance with the New Mexico Standard Specifications for Public Works Construction-1979 Edition (referred to herein as the Standard Specifications) and the Contract Documents for Public Works Contract 84-3.

2. Two (2) working days prior to any excavation, the contractor must contact Line Locating Service, 765-1234, for location of existing utilities.

3. Prior to construction, the contractor shall excavate and verify the horizontal and vertical locations of all obstructions. Should a conflict exist, the contractor shall notify the engineer or surveyor so that the conflict can be resolved with minimum amount of delay.

**THE FOLLOWING NOTES ALSO APPLY WHEN CHECKED**

☐ All utilities and utility service lines shall be installed prior to paving.

☒ Backfill compaction shall be according to specified street use. (Residential)

☒ Tack coat requirements shall be determined by the City Engineer.

☐ Sidewalks and wheelchair ramps within the curb returns shall be constructed wherever a new curb return is constructed.

☐ If curb is depressed for a driveway or a handicap ramp, the driveway or ramp shall be constructed prior to acceptance of the curb and gutter.

☒ All storm drainage facilities shall be completed prior to final acceptance.

**NOTES**

① REMOVE EXISTING CATCH BASINS WITH MINIMUM DAMAGE TO EXISTING 15" INLET PIPES.

② BUILD NEW CATCH BASINS IN LOCATION SHOWN AND PER DETAILS ON THIS SHEET, MATCH INVERTS OF EXIST. 15" INLET PIPES.

**REVISIONS**

NO.	DATE	REMARKS	BY
1	8/22/85	REVISED FROM AS-BUILT DRAWINGS	W.F. McManis

**DESIGNED BY BEN EMMETT**  
**DRAWN BY R. SALAZAR**  
**CHECKED BY**

**CITY OF ALBUQUERQUE**  
**MUNICIPAL DEVELOPMENT DEPARTMENT**  
**ENGINEERING DIVISION**

**TITLE: CATCH BASINS AT WALTER STREET AND ROSS AVE. - DETAILS**

APPROVALS	ENGINEER	DATE	APPROVALS	ENGINEER	DATE
City Engineer	W.F. McManis	7/27/84	Liquid Waste	R. Hana	7/27/84
A.C.E. - Design	J.R. Olen	7/27/84	Traffic	W.F. McManis	7/27/84
A.C.E. - Hydrology	Jim Gail	7/27/84	Water	R. Hana	7/27/84

**DRAWING NO. 2016** **MAP NO. L-14** **SHEET 1 OF 1**