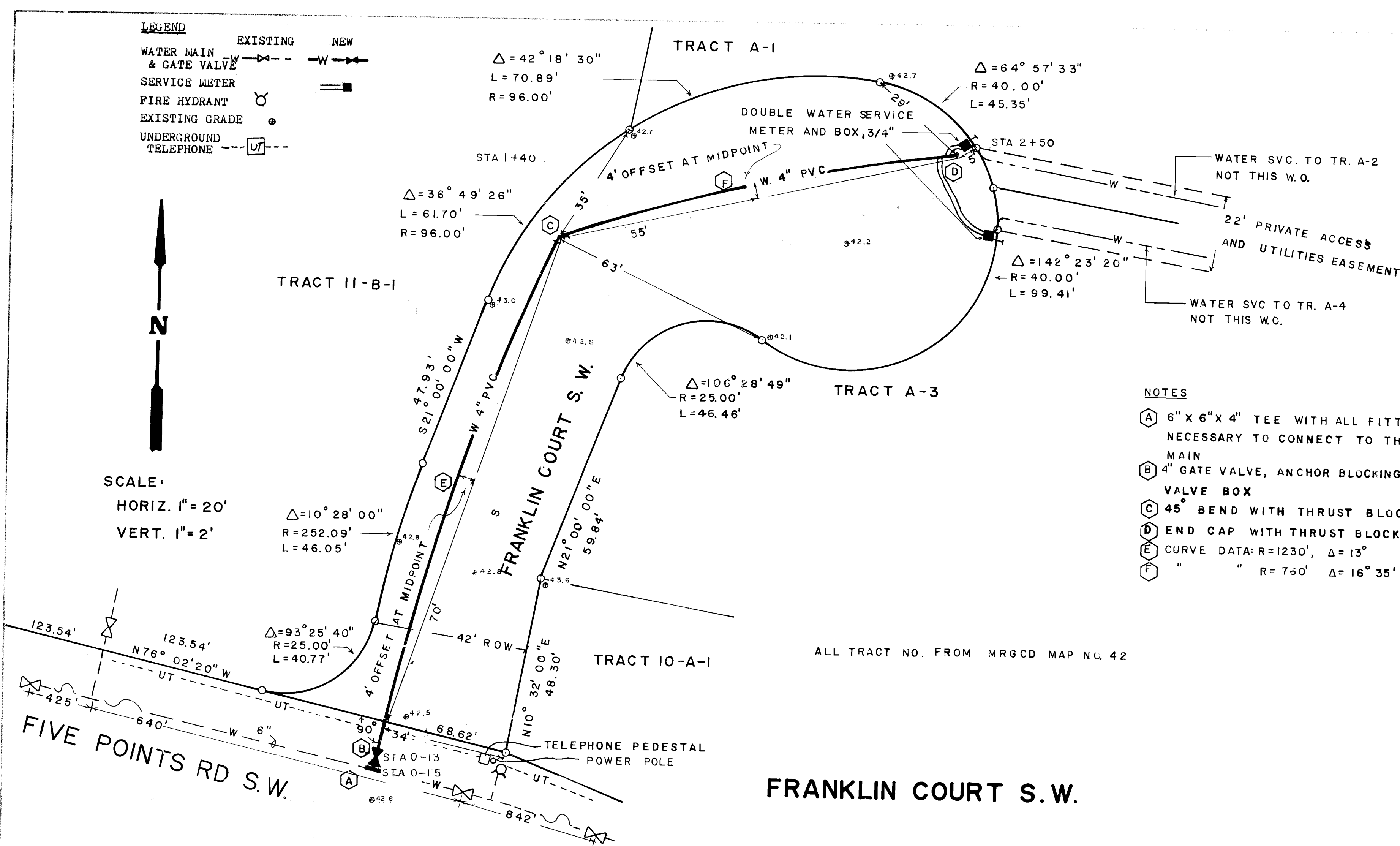


LEGEND

WATER MAIN & GATE VALVE
SERVICE METER
FIRE HYDRANT
EXISTING GRADE
UNDERGROUND TELEPHONE

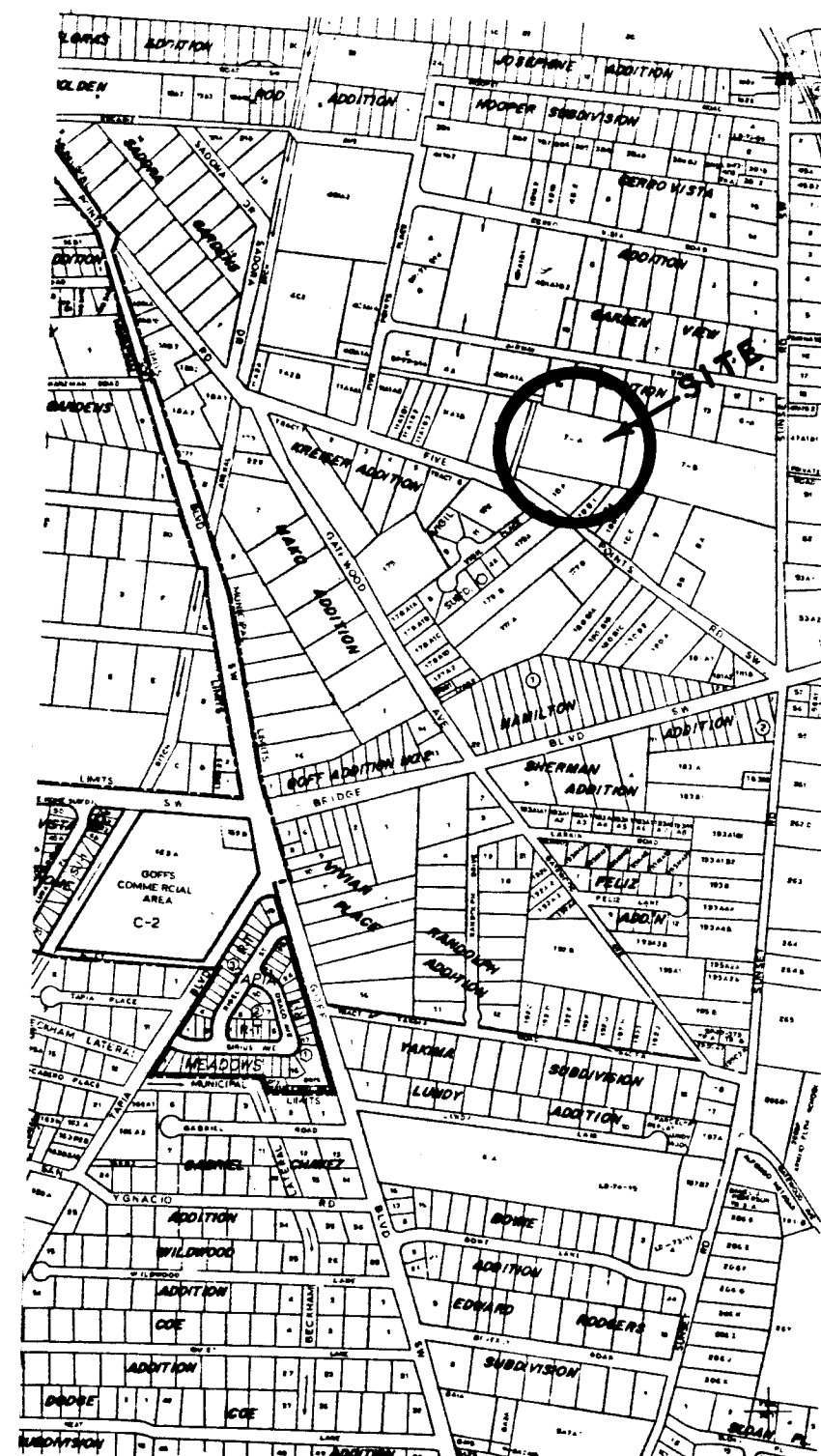


SCALE:
HORIZ. 1" = 20'
VERT. 1" = 2'



NOTES

- (A) 6" X 6" X 4" TEE WITH ALL FITTINGS, BLOCKING NECESSARY TO CONNECT TO THE EXISTING MAIN
- (B) 4" GATE VALVE, ANCHOR BLOCKING & TYPE A VALVE BOX
- (C) 45° BEND WITH THRUST BLOCKING
- (D) END CAP WITH THRUST BLOCKING
- (E) CURVE DATA: R=1230', Δ=13°
- (F) " " R=760' Δ=16° 35'



WATER LINE

Horizontal and vertical locations of existing utilities as shown on the drawings are approximate as determined by surface checks and available as-built drawings. At the time of excavation, if significant differences are found, notify the Engineer.

Place a 6" X 6" X 4" TEE, followed by a 4" gate valve, fit 4" PVC pipe to the gate valve, curving the pipe as necessary to obtain the shown placement. Radius of curvature of the 4" PVC pipe should not be less than 135' (offset of 1.5')

Refer to Std. Dwg.

- W-1-3 Non-pressure connection to C.I. pipe.
- W-2-3 Valve Box Type "A"
- W-4-1 Ring and Cover for Valve Box
- W-7-1 Water Plastic Pipe
- W-8-1 Water Valve Anchorage
- W-10-3 Meter Service Line Installation
- W-16 Meter Box Plan and Section
- W-18 Meter Box and Lid
- W-22 Concrete Blocking Design

NOTICE TO CONTRACTORS

1. All work detailed on these plans to be performed under contract shall, except as otherwise stated or provided for herein, be constructed in accordance with the New Mexico Standard Specifications for Public Works Construction-1979 Edition (referred to herein as the Standard Specifications) and the Contract Documents for Public Works Contract 84-3.
2. Two (2) working days prior to any excavation, the contractor must contact Line Locating Service, 765-1234, for location of existing utilities.
3. Prior to construction, the contractor shall excavate and verify the horizontal and vertical locations of all obstructions. Should a conflict exist, the contractor shall notify the engineer or surveyor so that the conflict can be resolved with minimum amount of delay.

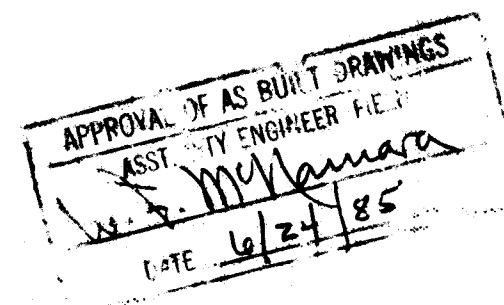
THE FOLLOWING NOTES ALSO APPLY WHEN CHECKED

- ☐ All utilities and utility service lines shall be installed prior to paving.
- ☒ Backfill compaction shall be according to specified street use. RESIDENTIAL
- ☐ Tack coat requirements shall be determined by the City Engineer.
- ☐ Sidewalks and wheelchair ramps within the curb returns shall be constructed wherever a new curb return is constructed.
- ☐ If curb is depressed for a driveway or a handicap ramp, the driveway or ramp shall be constructed prior to acceptance of the curb and gutter.
- ☐ All storm drainage facilities shall be completed prior to final acceptance.

PIPE CURVE

Placing of pipe along designated curve shall be done as follows:

1. Seat the end of the pipe into the gasketed bell or joint to the distance as recommended by the pipe manufacturer.
2. Place sufficient bedding material about two feet back from the joint to hold the pipe and joint in position.
3. Push the far end of the new pipe section over the required offset to obtain the curved line. Move the pipe as necessary at intermediate points to obtain a smooth arc.
4. Place sufficient bedding material along the pipe to hold the pipe in position.
5. Insert the next section of pipe in the end bell or joint and continue in a similar manner.
6. Do not attempt to deflect the pipe by inserting the pipe at an angle into the bell or joint at the time the pipes are joined.
7. After final alignment is obtained, the temporary bedding hold-downs should be spread and compacted as the pipe finally bedded. Care should be taken that the trench width is sufficient so that side clearance between the pipe and the trench side will permit compaction of the bed.
8. Thrust blocking shall be placed per manufacturers recommendations.



216.213.819.01.85

APPROVED FOR CONSTRUCTION

CITY ENGINEER

DRAWING NO. 2389

MAP NO. L-12

SHEET 1

OF 1