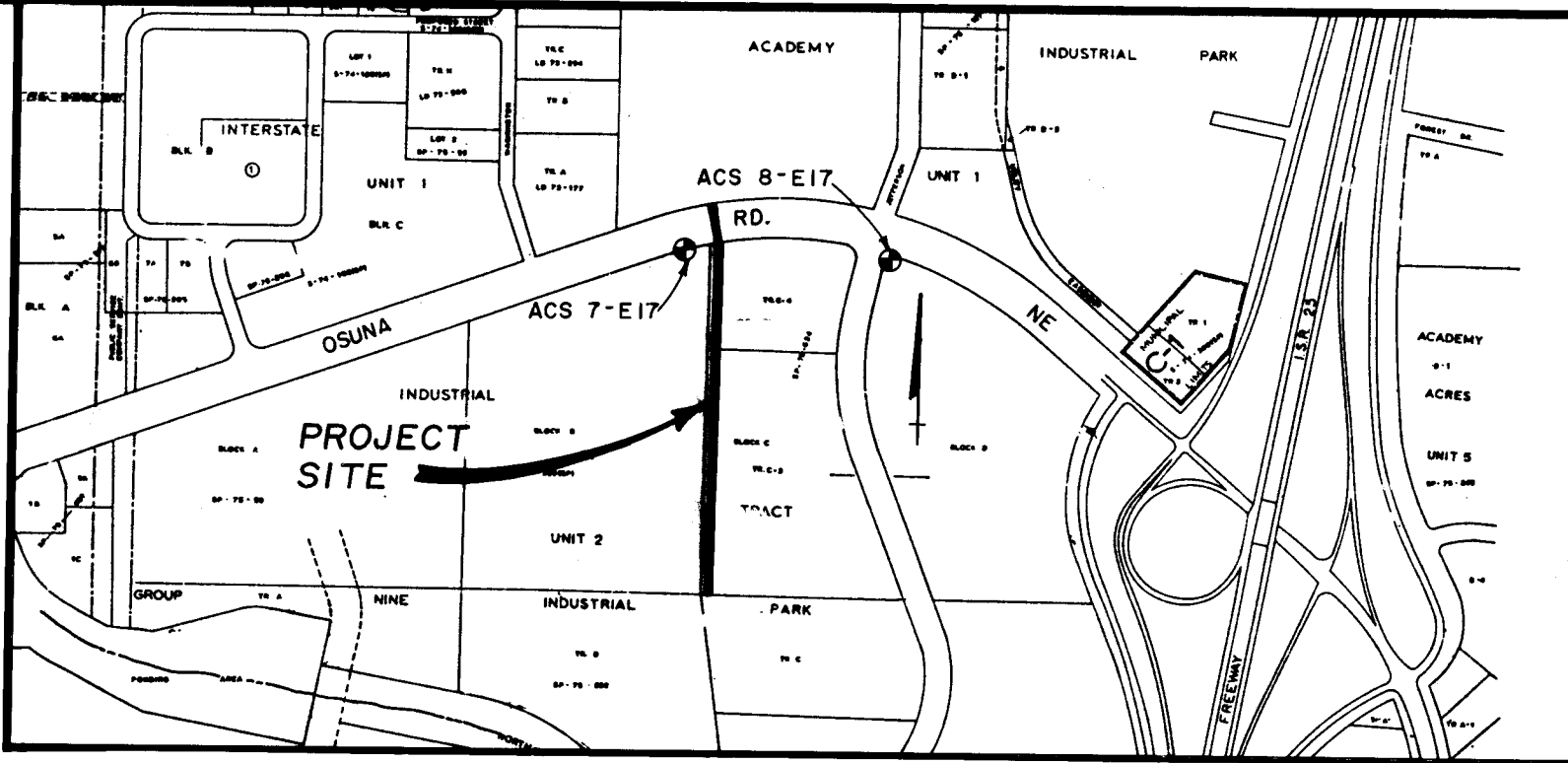


CITY OF ALBUQUERQUE  
NEW MEXICO



VICINITY MAP  
CITY MAP NO. E-17

CLIFFORD PLAZA SANITARY SEWER

MAY, 1985

JACK CLIFFORD & COMPANY

GENERAL NOTES

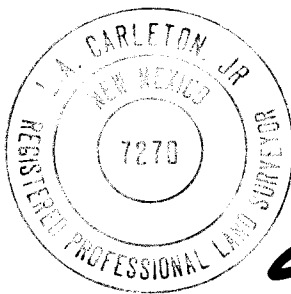
- All work detailed on these plans to be performed under this contract shall, except as otherwise stated or provided for hereon, be constructed in accordance with the New Mexico Standard Specifications for Public Works Construction - 1979 Edition (referred to herein as the Standard Specifications) and the Contract Documents for Public Works Contract No. 85-1, City of Albuquerque, New Mexico.
- Two (2) working days prior to any excavation, contractor must contact Line Locating Service, 765-1234, for location of existing utilities.  
  
Prior to construction, the contractor shall excavate and verify the horizontal and vertical locations of all obstructions. Should a conflict exist, the contractor shall notify the engineer or surveyor so that the conflict can be resolved with minimum amount of delay.
- All utilities and utility service lines shall be installed prior to paving.
- Backfill compaction shall be according to specified street use.
- Tack coat requirements shall be determined by the City Engineer.
- ACS control monuments 7-E17 and 8-E17 (see Vicinity Map) must be protected and preserved in accordance with Paragraph 4.4.1 of the General Conditions.
- Osuna traffic may be diverted to the opposite side of the median from 9:00 a.m. to 4:00 p.m. in order to install the sanitary sewer line. All thru lanes on Osuna Road must be open to traffic 4:00 p.m. to 9:00 a.m.
- Contractor must obtain barricade permit from the City Traffic Engineer 24 hours in advance of construction activities in Osuna Road.
- Provide steps for manholes per OSHA standards fabricated with 1/2" grade 60 steel reinforcing rod incapsulated in copolymer polypropylene plastic as manufactured by M.A. Industries, Inc. (Model #P-2-PFS) or equal as approved by the Water Resources Department.

INDEX TO SHEETS

SHEET 1	COVER SHEET
SHEET 2	PLAT
SHEET 3	PLAN & PROFILE

RECORD DRAWING AS BUILT

NOTE: AS BUILT CERTIFICATION IS BASED UPON PERIODIC CONSTRUCTION MONITORING, NOT FULLTIME, PROFESSIONAL, CONSTRUCTION INSPECTION. AS SUCH THIS CERTIFICATION REFERS TO MAJOR LOCATIONAL AND ELEVATION CONTROL, AND MATERIAL CHARACTERISTIC ASPECTS OF THE WORK AND IS NOT INTENDED TO VERIFY EITHER SPECIFIC DETAILS OR QUALITY OF CONSTRUCTION. IN ADDITION THE DRAWING MAY CONTAIN INFORMATION GATHERED BY CITY INSPECTORS WHICH I CANNOT CERTIFY.



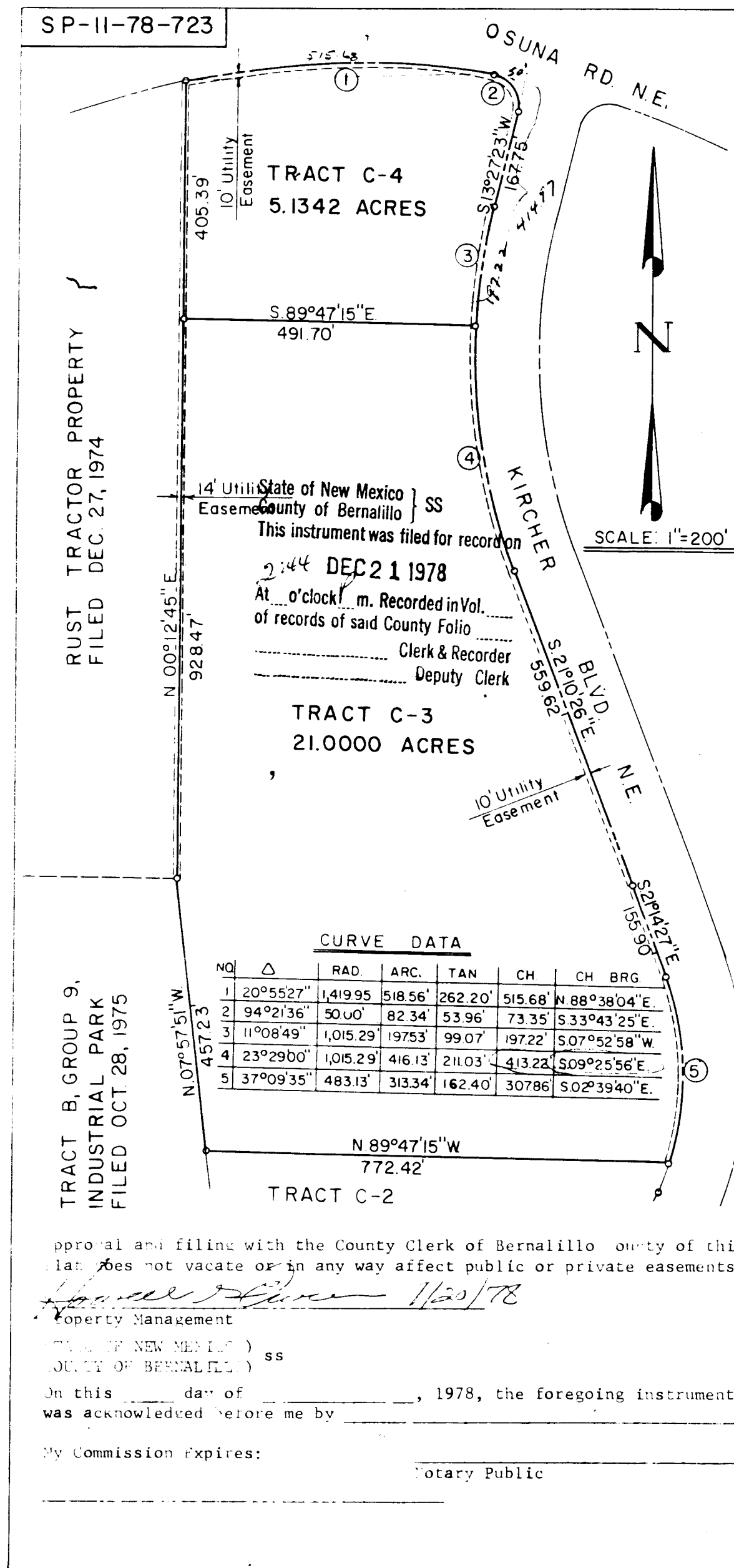
CERTIFIED BY *[Signature]* DATE *5/15/85*

CONSTRUCTION SAFETY

These drawings do not include necessary components for construction safety which shall remain the contractor's responsibility.

REV.	SHEETS	CITY ENGINEER	DATE	USER	DEPT.	DATE	USER	DEPT.	DATE
APPROVAL OF REVISIONS									
PLANS PREPARED UNDER DIRECTION OF:		EASTERLING & ASSOCIATES, INC.				APPROVED FOR CONSTRUCTION			
		CONSULTING ENGINEERS				<i>[Signature]</i> CITY ENGINEER			
5643 PARADISE BLVD. N.W. ALBUQUERQUE, NEW MEXICO 87114 (505) 898-8021		PROJECT NO. 2485				SHEET 1 OF 3			

78 93880



REPLAT OF BLOCK C, UNIT II, INTERSTATE INDUSTRIAL TRACT AND TRACT C-I, GROUP NINE INDUSTRIAL PARK

DESCRIPTION

A certain tract or parcel of land situate in Section 26, T11, S3E, N.M.P.M. (as projected) within the Alameda Valley Grant, Bernalillo County, New Mexico being all of Block C, Unit II, Interstate Industrial Tract (filed with the Bernalillo County Clerk on March 21, 1975) and all of Tract C-1, Group 9 Industrial Park (filed with the Bernalillo County Clerk on May 9, 1978) and more particularly being described as follows:

Beginning at the northwest corner of said Block C, a point being the intersection of the east line of Rust Tractor property and the south right-of-way line of Osuna Road N.E., a point on a curve; thence, along said south right-of-way line, along a curve to the right (said curve having a radius of 1419.95', a central angle of 20° 55'27" and a chord bearing S 88°38'04" E, a distance 515.68') a distance 518.56' to a point on a curve; thence,

Along a curve to the right (said curve having a radius of 50.00', a central angle of 94° 21'36" and a chord bearing S 33° 43'25" E, a distance 73.35') a distance 82.34' to a point on the west right-of-way line of Archer Boulevard N.E.; thence,

S 13° 27'23" W, along said west right-of-way line, a distance 167.77' to a point on a curve; thence,

Along said west right-of-way line, along a curve to the left (said curve having a radius of 1015.29', a central angle of 34° 37'49" and a chord bearing S 03° 51'32" E, a distance 604.36') a distance 613.66'; thence,

S 21° 10'2" E, along said west right-of-way line, a distance 559.62'; thence,

S 21° 14'27" E, along said west right-of-way line, a distance 155.90' to a point on a curve; thence,

Along said west right-of-way line, along a curve to the right (said curve having a radius of 483.13', a central angle of 37° 09'35" and a chord bearing S 02° 39'40" E, a distance 307.86') a distance 313.34' to the southeast corner of said Tract C-1; thence,

S 89° 47'13" W, along the line common to said Tract C-1 and Tract C-2, a distance 772.42' to the southwest corner of said Tract C-1; thence,

S 0° 0'0" W, along the line common to said Tract C-1 and Tract B, Group 9, Industrial Park, a distance 44.23' to the northwest corner of said Tract C-1 (also being the southeast corner of Rust Tractor property, the southwest corner of said Block C and the north east corner of said Tract C-1); thence,

S 00° 12'41" E, along the line common to Rust Tractor Property and said Block C, a distance 1333.86' to the point of beginning and containing 26.1342 acres more or less.

The subdivision of the land hereon described is with free consent and in accordance with the desires of the undersigned owner and proprietor thereof, and said owner and proprietor does hereby dedicate the public right-of-way shown hereon, together with all easements shown on this plat. Power and communication easements are reserved where shown by dashed lines, being 14 feet in width centered on the rear lot lines and 10 feet in width centered on the side lot lines, except as noted, including the right of ingress and egress and the right to trim interfering trees. Any drainage easements shown hereon are also easements for underground sewer and water lines.

I, under the laws of New Mexico, certify that I am a registered Land Surveyor, and that this plat was prepared by me or under my supervision, shows all easements of record, meets the minimum requirements for monumentation and surveys of the Albuquerque Subdivision Ordinance, and is true and accurate to the best of my knowledge.

Larry W. Stone, N.M.L.S. #6455 Date December 11, 1978

Approval and conditional acceptance, as specified by Subsection 22A20 of the Albuquerque Subdivision Ordinance.

Land Division No. Approved:

Planning Director



GORDON HERKENHOFF & ASSOCIATES, INC.  
302 Eighth Street, N.W.  
Albuquerque, New Mexico 87102  
(505) 247-0294

Description: REPLAT OF BLOCK C, UNIT II, INTERSTATE INDUSTRIAL TRACT AND TRACT C-1, GROUP NINE INDUSTRIAL PARK  
Date: NOV 1978 Drawing No. Page

RECORD DRAWING AS BUILT

NOTE: AS BUILT CERTIFICATION IS BASED UPON PERIODIC CONSTRUCTION MONITORING, NOT FULLTIME, PROFESSIONAL, CONSTRUCTION INSPECTION. AS SUCH THIS CERTIFICATION REFERS TO MAJOR LOCATIONAL AND ELEVATION CONTROL, AND MATERIAL CHARACTERISTIC ASPECTS OF THE WORK AND IS NOT INTENDED TO VERIFY EITHER SPECIFIC DETAILS OR QUALITY OF CONSTRUCTION. IN ADDITION THE DRAWING MAY CONTAIN INFORMATION GATHERED BY CITY INSPECTORS WHICH I CANNOT CERTIFY.

CERTIFIED BY DATE

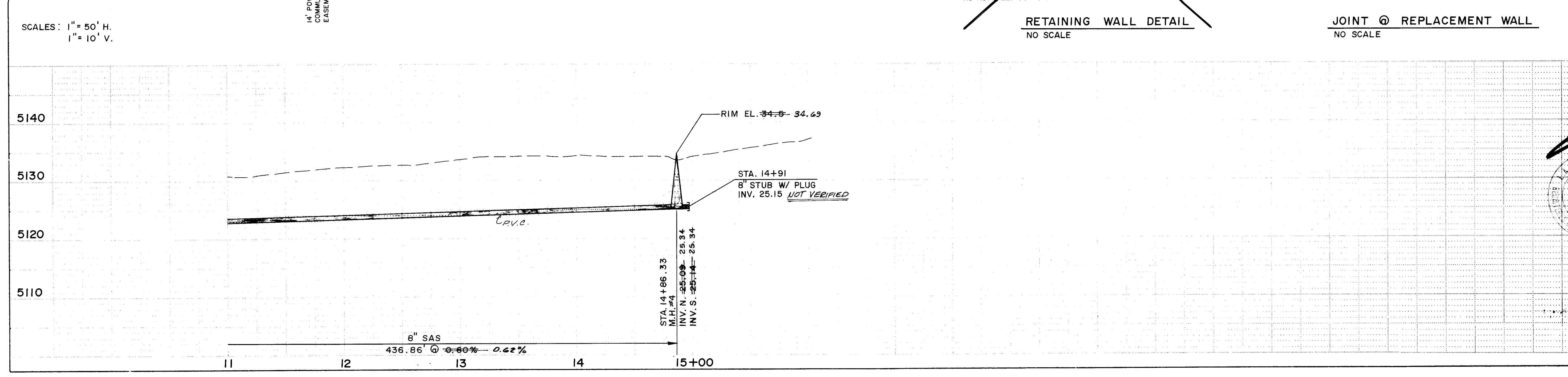
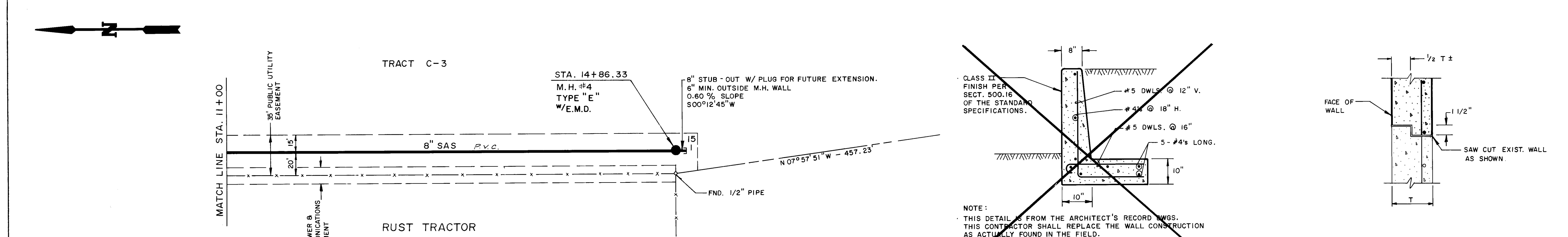
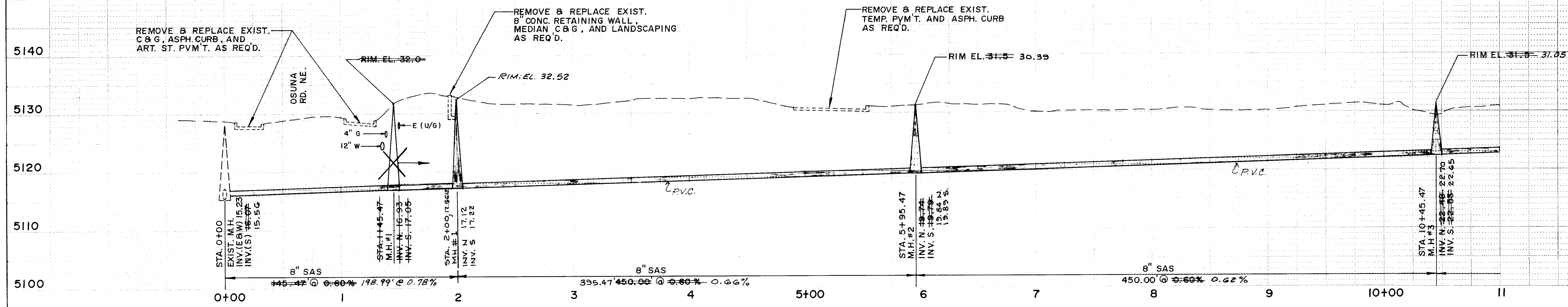
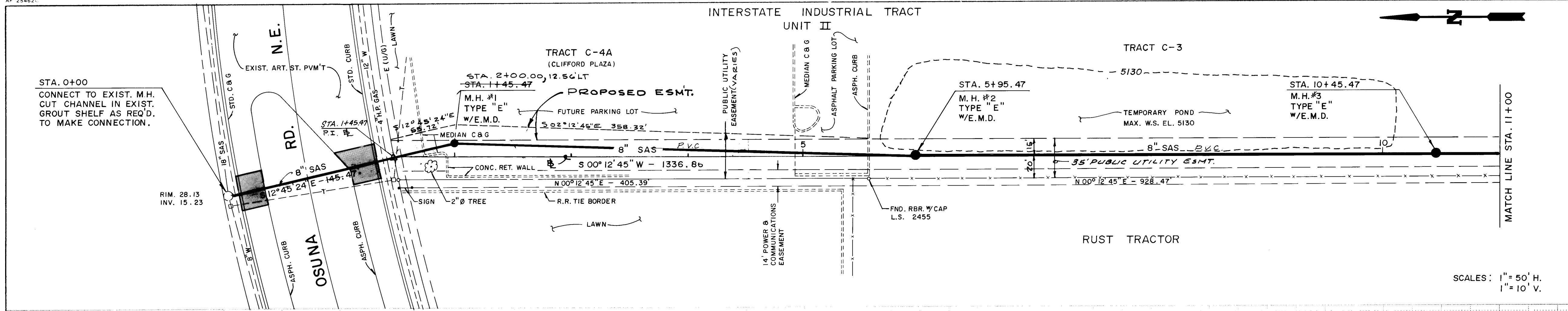


1 2 3 4 5 6 7 8 9 10 11 12  
2 6 2 4 8 5 0 2 8 5

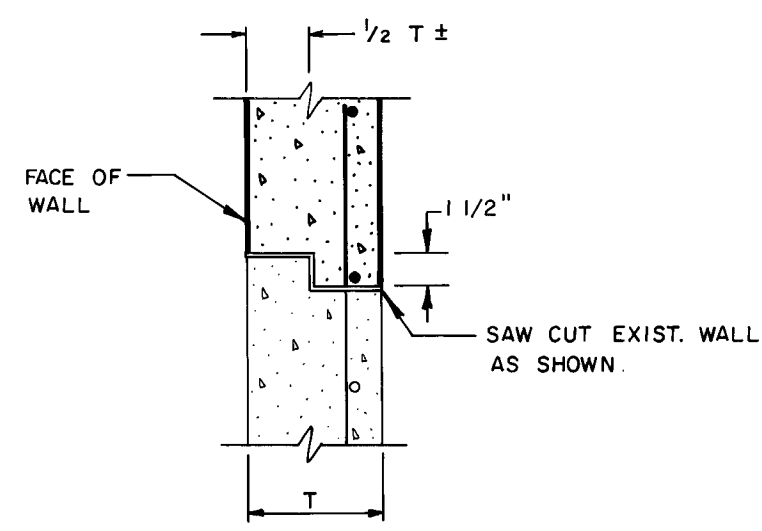
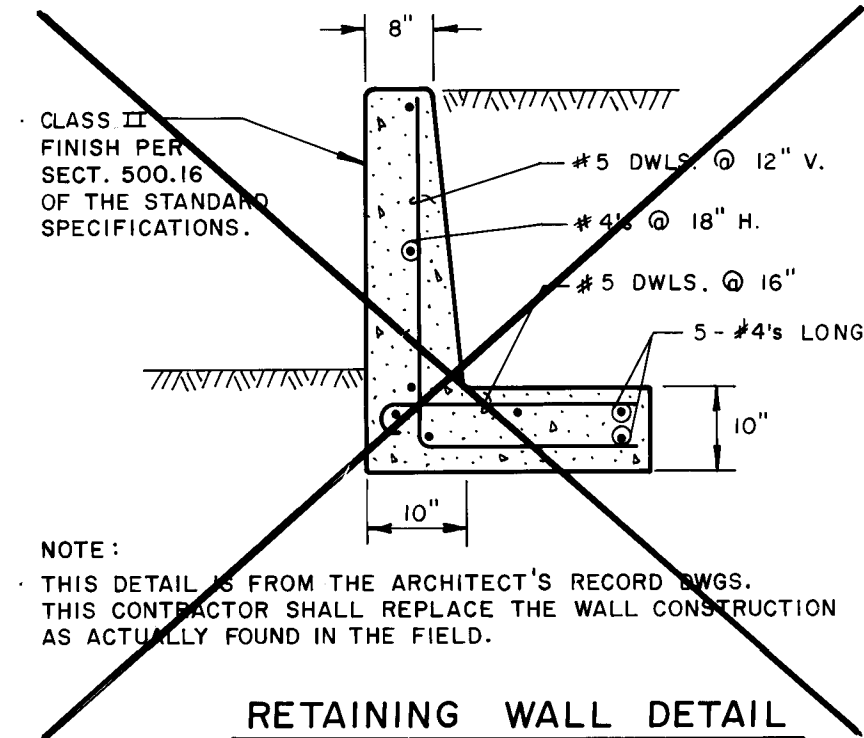
APPROVED FOR CONSTRUCTION

CITY ENGINEER DATE

CITY OF ALBUQUERQUE MUNICIPAL DEVELOPMENT DEPARTMENT ENGINEERING DIVISION					
TITLE: PLAT FOR CLIFFORD PLAZA SANITARY SEWER					
APPROVALS	ENGINEER	DATE	APPROVALS	ENGINEER	DATE
City Engineer	N/A MLO		Liquid Waste	NA MLO	3/29/85
A.C.E. - Design			Traffic	NA MLO	3/29/85
Hydrology	N.A. B.F.A.	7/15/85	Water	NA MLO	5/24/85
DRAWING NO. 2485			MAP NO. E-17 SHEET 2 OF 3		



SCALES: 1" = 50' H.  
1" = 10' V.



2 6 2 4 8 5 0 3 8 5

### RECORD DRAWING AS BUILT

NOTE: AS BUILT CERTIFICATION IS BASED UPON PERIODIC CONSTRUCTION MONITORING, NOT FULLTIME, PROFESSIONAL, CONSTRUCTION INSPECTION. AS SUCH THIS CERTIFICATION REFERS TO MAJOR LOCATIONAL AND ELEVATION CONTROL, AND MATERIAL CHARACTERISTIC ASPECTS OF THE WORK AND IS NOT INTENDED TO VERIFY EITHER SPECIFIC DETAILS OR QUALITY OF CONSTRUCTION. IN ADDITION THE DRAWING MAY CONTAIN INFORMATION GATHERED BY CITY INSPECTORS WHICH I CANNOT CERTIFY.

CERTIFIED BY *[Signature]* DATE 9/5/85

CITY OF ALBUQUERQUE  
MUNICIPAL DEVELOPMENT DEPARTMENT  
ENGINEERING DIVISION

ENGINEERING DIVISION					
TITLE: CLIFFORD PLAZA SANITARY SEWER					
APPROVALS	ENGINEER	DATE	APPROVALS	ENGINEER	DATE
City Engineer	<i>C. J. Hays</i>	<i>7/15/85</i>	Liquid Waste	<i>William G. Babel</i>	<i>5/27/85</i>
ACE - Design	<i>N. A. B. J. A.</i>	<i>7/15/85</i>	Traffic	NA DNH	<i>5/27/85</i>
ACE - Hydrology	<i>N. A. B. J. A.</i>	<i>7/15/85</i>	Water	<i>William G. Babel</i>	<i>5/27/85</i>
DRAWING NO. 2485		MAP NO. E-17		SHEET 3 OF 3	