

RIO GRANDE ZOOLOGICAL PARK

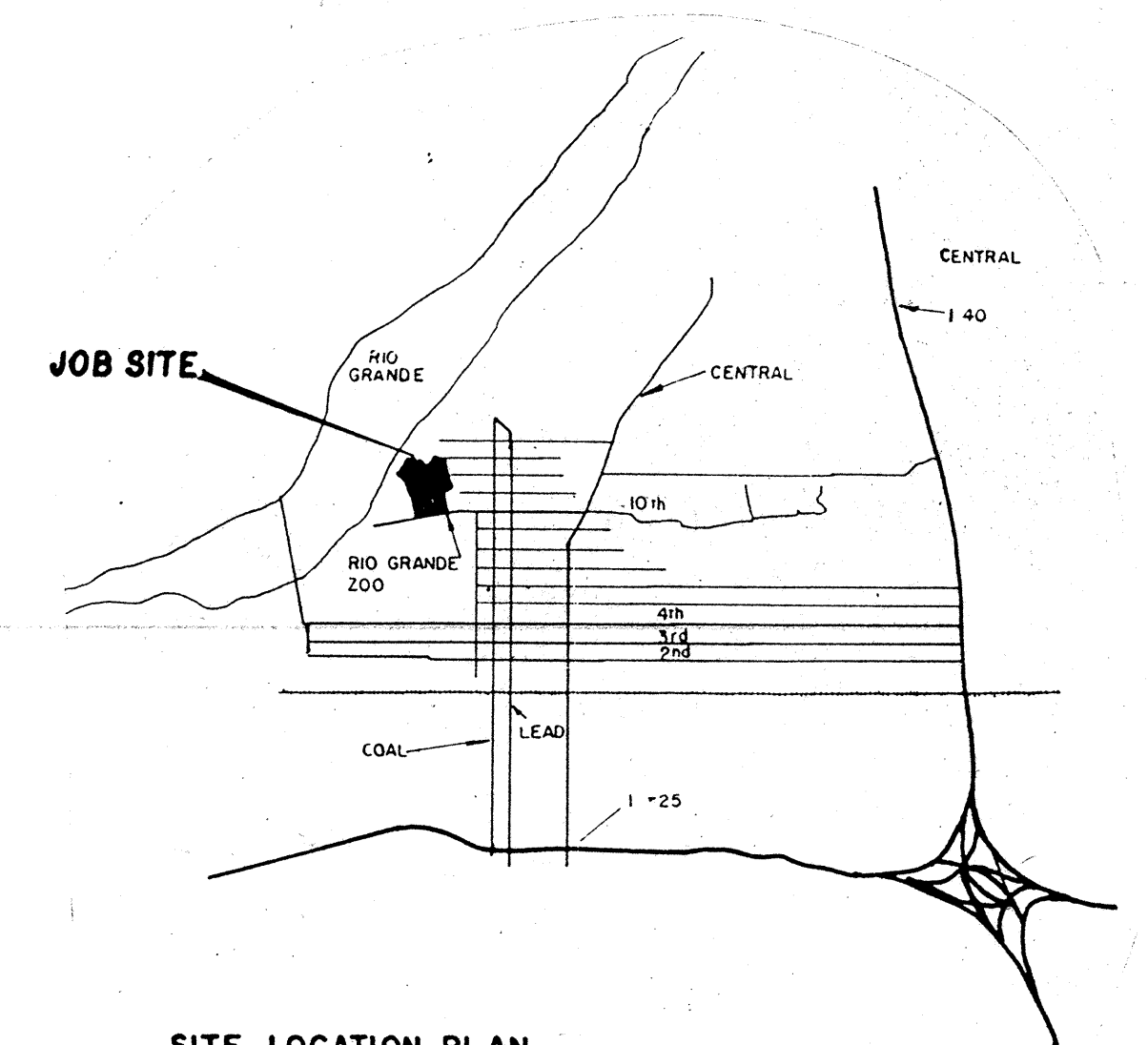
CITY OF ALBUQUERQUE

SOUTH SIDE

POWER AND SECURITY

SUPPORT FACILITIES

*As
Advertised*

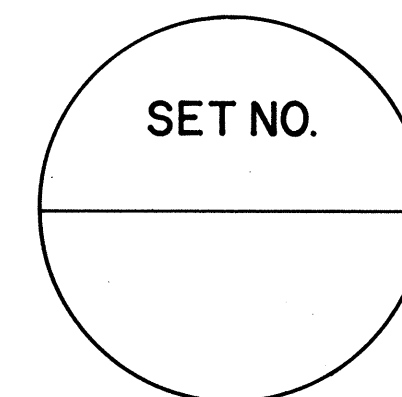


1 2 3 4 5 6 7 8 9 10 11 12
26 26330186

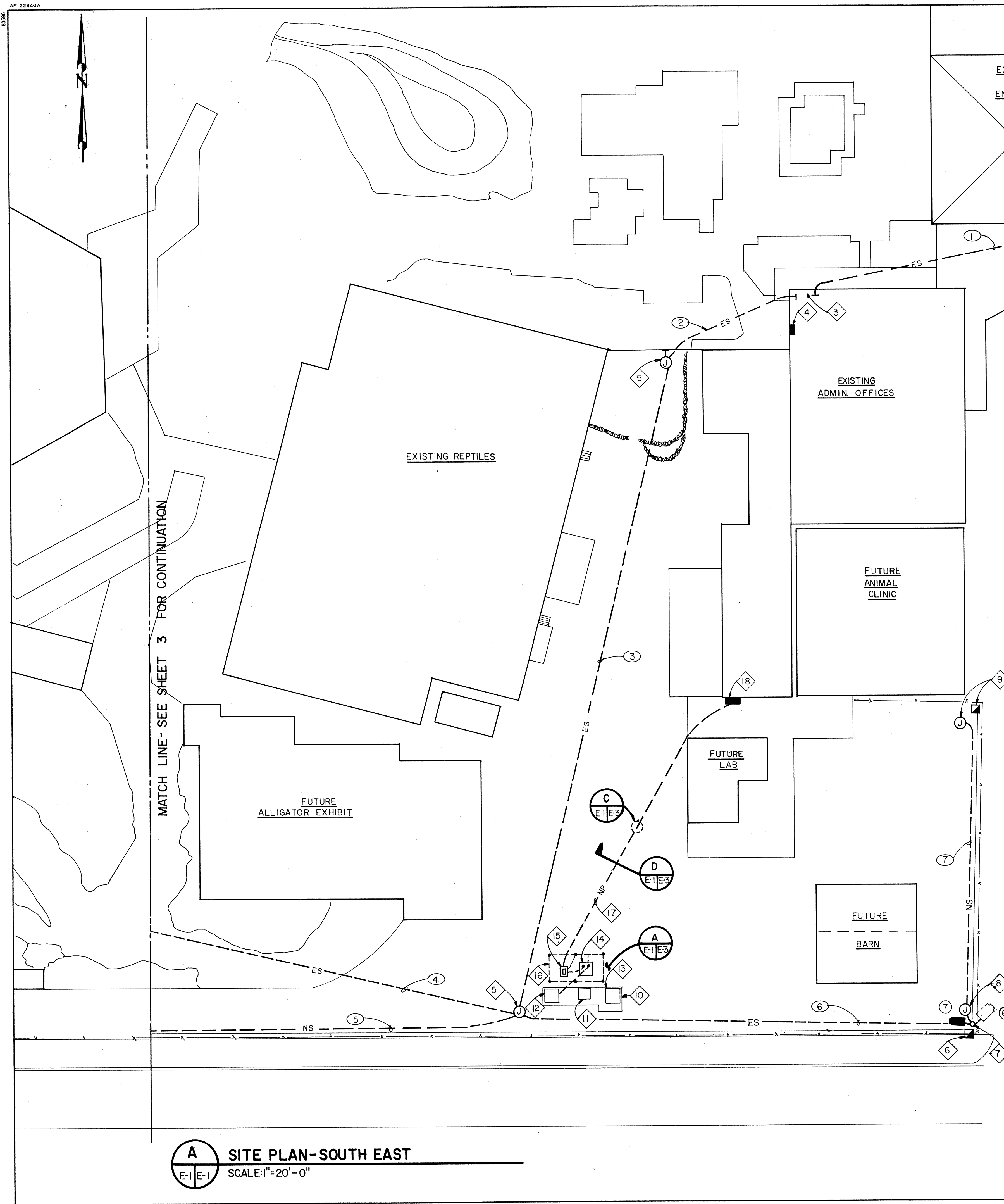
INDEX OF DRAWINGS

SHEET NO.	DESCRIPTION
1	TITLE SHEET
2	SITE PLAN - SOUTH EAST
3	SITE PLAN - SOUTH CENTER
4	DETAILS SHEET 1
5	DETAILS SHEET 2

John A. Moore
APPROVED FOR RIO GRANDE ZOO



REV	SHEETS	CITY ENGINEER	DATE	USER DEPT.	DATE	USER DEPT.	DATE
APPROVAL OF REVISIONS							
					APPROVED FOR CONSTRUCTION		
PROJECT NO.		2633			SHEET 1 OF 5		



- KEYED NOTES**
- EXISTING CONSOLE IN SECURITY OFFICE. PROVIDE NEW MONITOR, 2 F.O. RECEIVERS, IR ALARM CONTROL PANEL, AUDIO UNIT AND POWER CORDS/PLUGS AND CABLES & CONNECTORS TO INTERFACE WITH EXISTING SYSTEM.
 - EXISTING CONDUIT RISES ON WEST WALL OF SECURITY OFFICE. ROUTE NEW CABLES OVER CEILING AND DOWN TO CONSOLE ON NORTH WALL.
 - EXISTING TELEPHONE CLOSET IN N.W. CORNER OF ADMIN. BUILDING. ROUTE NEW CABLES FROM CONDUITS 1 TO 2 ACROSS NORTH WALL IN RACK BELOW PHONE EQUIPMENT.
 - EXISTING PANEL "M" IN TELEPHONE CLOSET. RE-WIRE SECURITY CIRCUIT 27 WITH 3 #10 THIN SOLID CU. CONDUCTORS, PH., N., AND GRD.
 - EXISTING SECURITY J-BOX.
 - TWO IR RECEIVERS. SEE DETAILS D & E ON SHEET 5. PARALLEL WIRE ALARM CIRCUIT FROM NEW CAMERA 7 TO N.O. CONTACTS IN BOTH RECEIVERS WITH 2 #12 THIN CU.
 - EXISTING POLE WITH 3/4" CONDUIT & WIRING STUBBED UP INSIDE HANDHOLE. NEW IR POWER OUTLET TO BE NIPPLED ON OUTSIDE OF POLE ON NORTH SIDE.
 - IR POWER OUTLET. SEE DETAIL D ON SHEET 5.
 - IR TRANSMITTER AND POWER OUTLET. SEE DETAILS D & E ON SHEET 5. POWER OUTLET TO BE MOUNTED ON SAME STEEL POLE.
 - EXISTING PNM TRANSFORMER.
 - EXISTING PNM METERING TRANSCLASURE.
 - EXISTING PRIMARY SWITCH. SEE SHEET 4 FOR WORK REQUIRED.
 - EXISTING CONCRETE PAD.
 - TRANSFORMER & PAD BY CONTRACTOR.
 - PANELBOARD, PAD & STUB OUTS BY CONTRACTOR.
 - GROUNDING GRID BY CONTRACTOR.
 - FUTURE ADMIN. BLDG./ANIMAL CLINIC FEEDER BY ZOO.
 - FUTURE SERVICE ENTRANCE PANELBOARD AND CONDUIT STUB OUTS UNDER CONTRACT FOR ANIMAL CLINIC.

GENERAL NOTES

- WORK IS BY CONTRACTOR UNLESS SPECIFICALLY NOTED OTHERWISE.
- LOCATIONS OF EXISTING UNDERGROUND CONDUIT RUNS ARE APPROXIMATE ONLY. CONTRACTOR'S BID SHALL INCLUDE WIRING FOR ACTUAL RUNS.
- FOR POWER RISER DIAGRAMS, SEE DETAIL B ON SHEET 3.

SYMBOL LEGEND

--ES-- EXISTING SECURITY CONDUIT UNDERGROUND. NEW CABLES & WIRING BY CONTRACTOR.

--NS-- NEW SECURITY CONDUIT UNDERGROUND BY ZOO. CABLES & WIRING BY CONTRACTOR.

--NP-- NEW POWER CONDUIT AND WIRING UNDERGROUND BY ZOO. STUB OUTS FROM EQUIPMENT BY CONTRACTOR, UNLESS OTHERWISE NOTED.

--ES-- EXISTING SECURITY CONDUIT RUN SURFACE. NEW CABLES & WIRING BY CONTRACTOR.

--NS-- NEW SECURITY CONDUIT RUN SURFACE BY ZOO. NEW CABLES & WIRING BY CONTRACTOR.

① J-BOX/POWER OUTLET, AS NOTED.

■ N.I.C. PANELBOARD OR SERVICE EQUIPMENT BY ZOO OR UNDER ANOTHER CONTRACT

■ NEW CAMERA OR FUTURE CAMERA (N.I.C.), AS NOTED

■ EXISTING CAMERA

■ NEW IR, SENSING SYSTEM AS NOTED

③ SECURITY CONDUIT SCHEDULE REFERENCE (TYPICAL). SEE SHEET 2 FOR SCHEDULE.

⑤ KEYED NOTE REFERENCE (TYPICAL)

CU. COPPER

F.O. FIBER OPTIC

(GRD.) GROUNDING CONDUCTOR

IR INFRARED

M.L.O. MAIN LUGS ONLY

(N) NEUTRAL CONDUCTOR

N.I.C. NOT IN CONTRACT

N.O. NORMALLY OPEN

(PH.) PHASE CONDUCTOR

PNM PUBLIC SERVICE CO. OF NEW MEXICO

PWR. POWER

PULL PULL LINE

SECURITY CONDUIT SCHEDULE

CONDUIT	EXISTING FILL	NEW FILL
① 2"	10 F.O. & PULL	15 F.O. & PULL
② 2"	10 F.O., 3 #12, REDUNDANT ALARM CABLE & PULL	15 F.O., 3 #10 PWR & 1 PULL
③ 2"	10 F.O., 3 #12 & PULL	15 F.O., 3 #10 PWR & 1 PULL
④ 2"	9 F.O., & PULL	11 F.O., & 1 PULL
⑤ 1"	--	2 F.O., 3 #10 PWR, 2 #12 ALARM & 1 PULL
⑥ 3/4"	1 F.O., 3 #12 PWR & 1 PULL	2 F.O., 3 #10 PWR 2 #12 ALARM & 1 PULL
⑦ 3/4"	--	3 #10 PWR & 1 PULL
⑧ 1"	3 F.O. & 1 PULL	4 F.O., 3 #10 PWR & 1 PULL
⑨ 3/4"	3 F.O., 3 #12 PWR & 1 PULL	4 F.O., 3 #10 PWR & 1 PULL
⑩ 1"	1 F.O., 3 #12 PWR & 1 PULL	2 F.O., 3 #10 PWR & 1 PULL
⑪ 3/4"	--	1 F.O., 3 #10 PWR & 1 PULL
⑫ 3/4"	--	2 F.O., 3 #10 PWR & 1 PULL

ENGINEER'S SEAL

CITY OF ALBUQUERQUE
MUNICIPAL DEVELOPMENT DEPARTMENT
ENGINEERING DIVISION

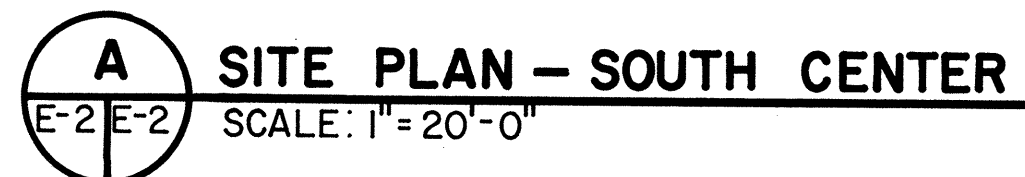
TITLE: RIO GRANDE ZOOLOGICAL PARK
SOUTH SIDE POWER & SECURITY SUPPORT
FACILITIES SITE PLAN-SOUTH EAST

APPROVALS	ENGINEER	DATE	APPROVALS	ENGINEER	DATE
City Engineer	<i>[Signature]</i>	6/3/86	Liquid Waste	<i>[Signature]</i>	6/3/86
A.C.E.-Design	<i>[Signature]</i>	6-3-86	Traffic	<i>[Signature]</i>	6/3/86
A.C.E.-Hydrology	<i>[Signature]</i>	6-3-86	Water	<i>[Signature]</i>	6/3/86

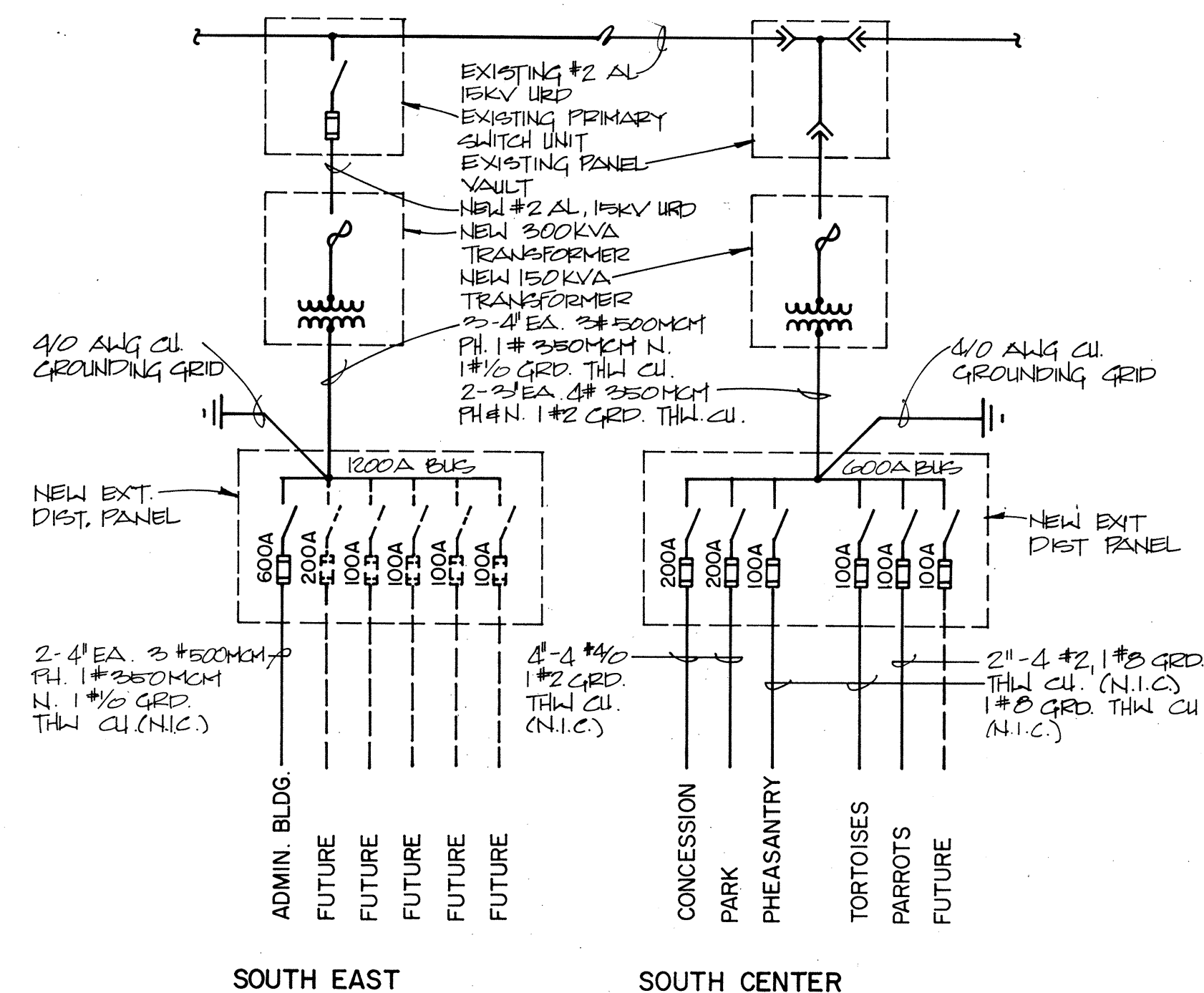
DRAWING NO. 2633 MAP NO. SHEET 2 OF 5

A SITE PLAN-SOUTH EAST
SCALE: 1"=20'-0"

26 26330286



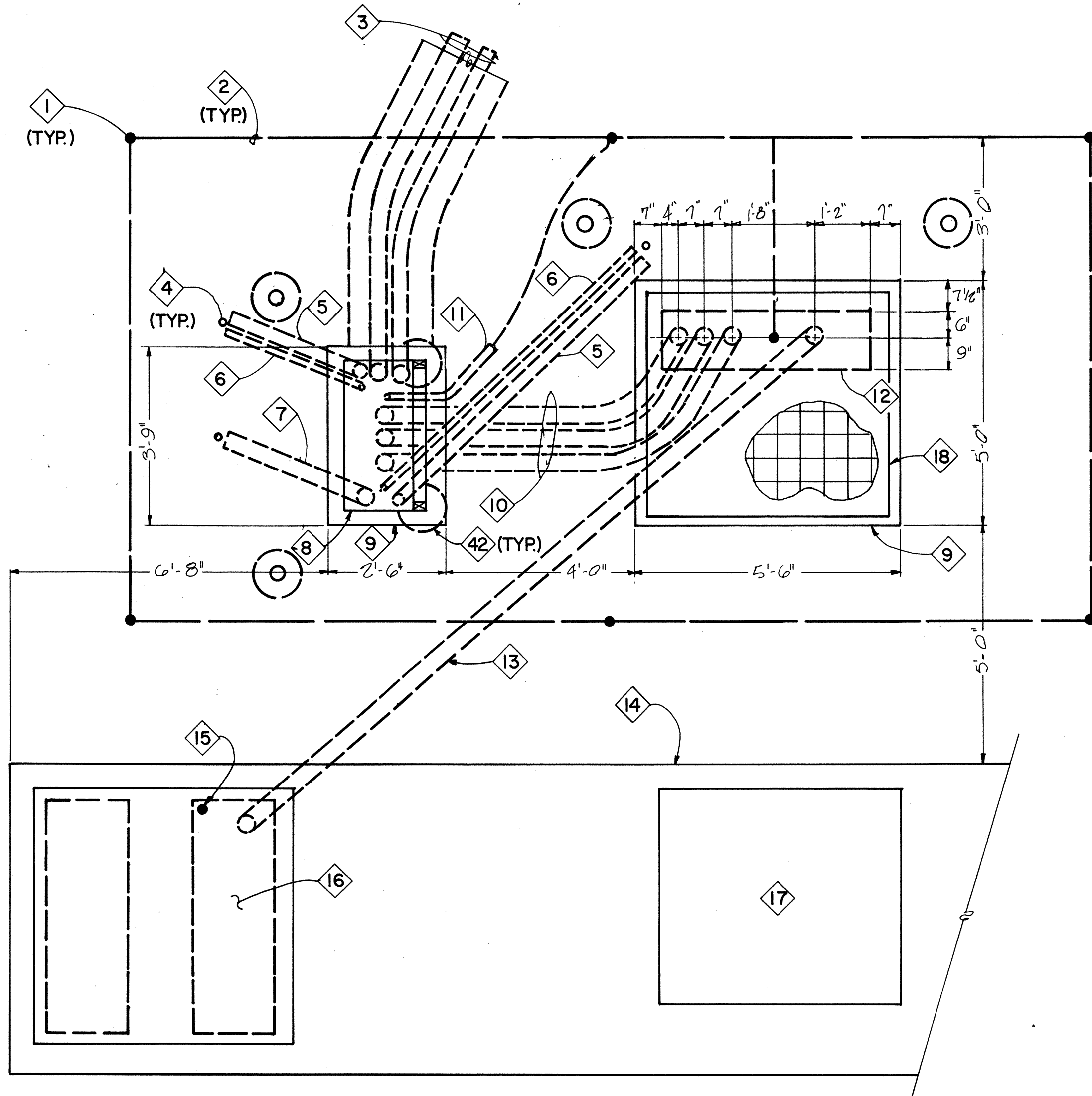
- 1 EXISTING SECURITY J-BOX.
- 2 4" UNDERGROUND CONDUITS BY ZOO.
- 3 SERVICE ENTRANCE EQUIPMENT & CONDUIT STUB OUT UNDER CONCESSION/TOILET
CONTRACT.
- 4 2" UNDERGROUND CONDUIT BY ZOO.
- 5 IR RECEIVER FROM WEST AND IR TRANSMITTER TO EAST. SEE DETAIL E ON SHEET
5. PARALLEL WIRE ALARM CIRCUIT FROM NEW CAMERA 7 (SEE SHEET 2) TO N.O
CONTACT IN RECEIVER WITH 2 #12 THWN CU.
- 6 IR POWER OUTLET. SEE DETAIL D ON SHEET 5. OUTLET TO BE MOUNTED
ON SAME STEEL POLE AS IR UNIT(S).
- 7 POLE PROVIDED AND SET BY ZOO WITH 1" CONDUIT STUBBED UP AT HANDHOLE.
- 8 IR TRANSMITTER. SEE DETAIL E ON SHEET 5.
- 9 WEATHERPROOF 4 X 4 X 4 J - BOXES ABOVE ROOF, BY ZOO.
- 10 EXISTING CAMERA RELOCATED FROM SE SIDE OF RAIN FOREST BY ZOO.
- 11 LEAVE 10FT. F.O. COILED UP FOR FUTURE CONNECTION TO CAMERA.



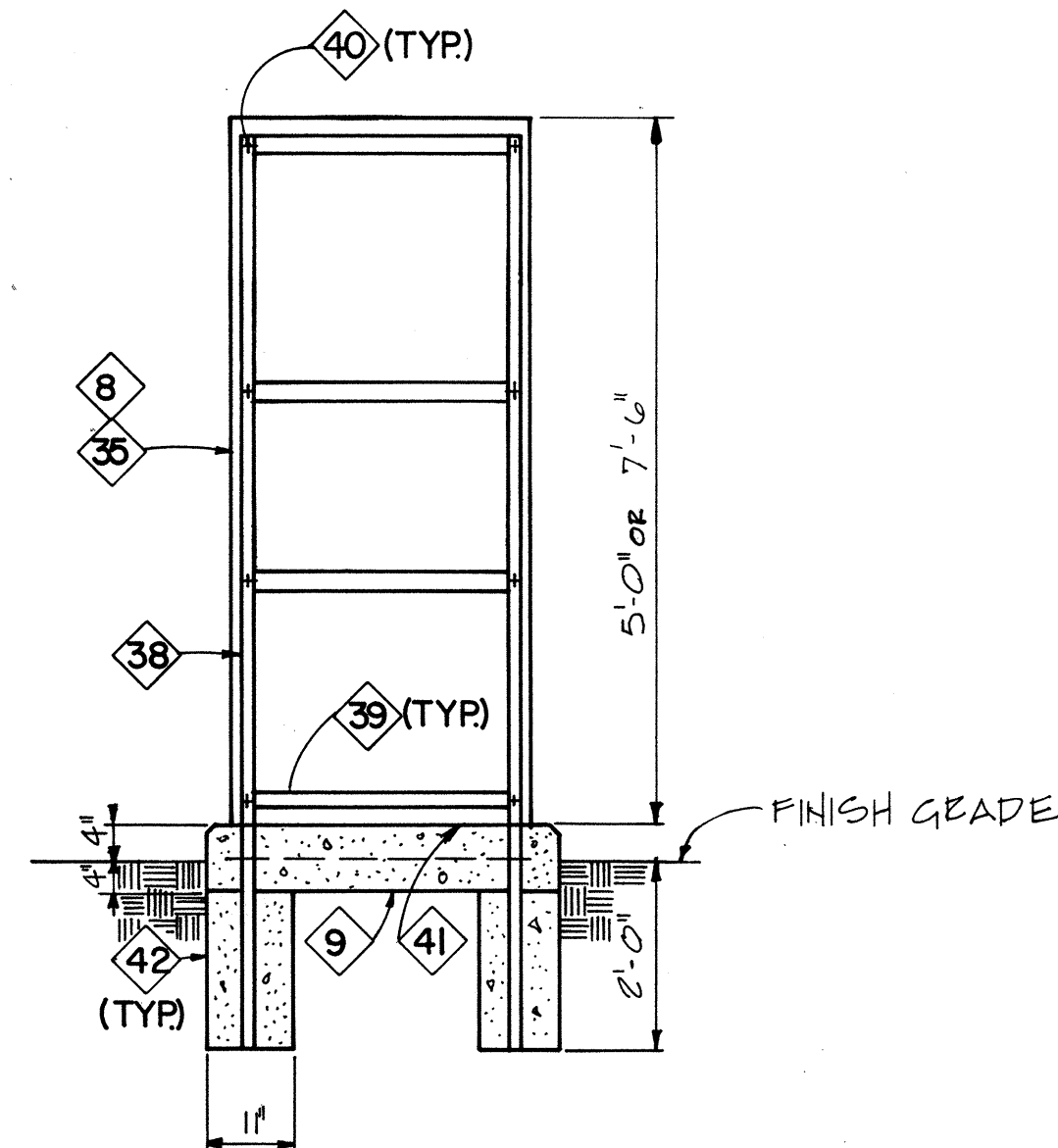
POWER RISER DIAGRAM
NOT TO SCALE

1	2	3	4	5	6	7	8	9	10	11	12
2	6		2	6	3	3	0	3	8	6	

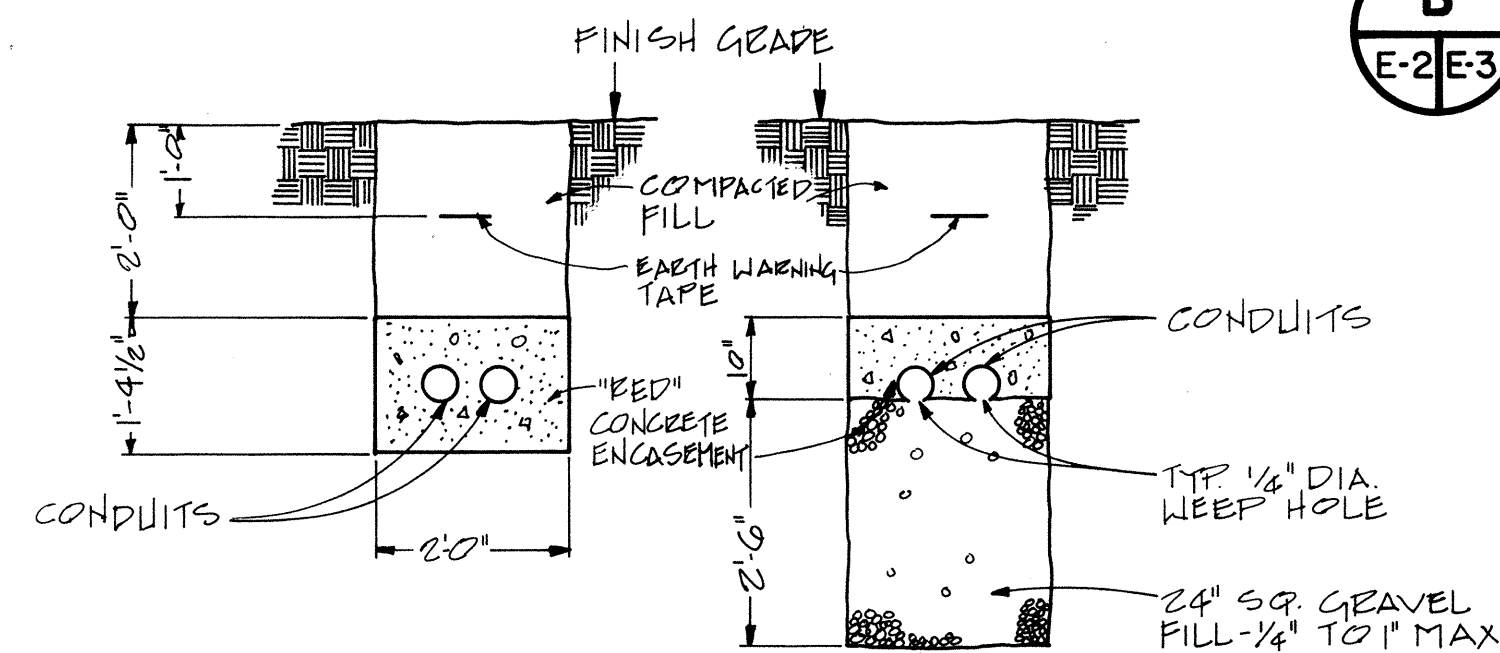
CITY OF ALBUQUERQUE MUNICIPAL DEVELOPMENT DEPARTMENT ENGINEERING DIVISION					
TITLE: RIO GRANDE ZOOLOGICAL PARK SOUTH SIDE POWER & SECURITY SUPPORT FACILITIES SITE PLAN - SOUTH CENTER					
APPROVALS	ENGINEER	DATE	APPROVALS	ENGINEER	DATE
City Engineer	<i>[Signature]</i>	6-13-86	Liquid Waste	<i>N.A. Rteira</i>	6/3/86
A.C.E. - Design	<i>[Signature]</i>	6-3-86	Traffic	<i>N.A. Rteira</i>	6/3/86
A.C.E. - Hydrology	<i>N.A. Rteira</i>	6-3-86	Water	<i>N.A. Rteira</i>	6/3/86
DRAWING NO.		MAP NO.		SHEET OF	
2633				3 OF 5	



A ENLARGED POWER LAYOUT—SOUTH EAST
E-1 E-3 SCALE: 1/2"=1'-0"

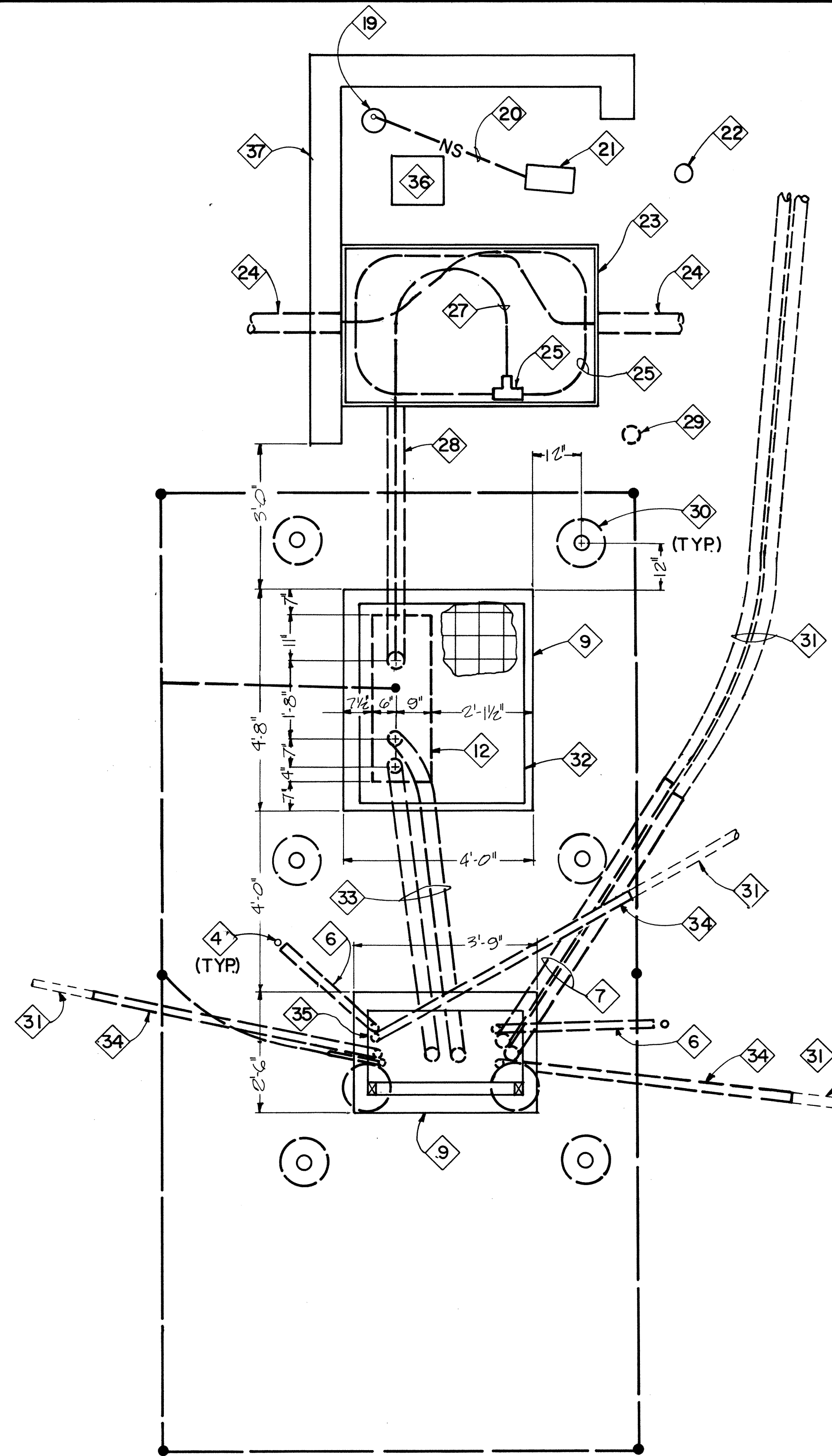


C PANELBOARD SUPPORT DETAIL
E-3 E-3 SCALE: 1/2"=1'-0"



D TYP. TRENCH SECTION
E-1 E-3 SCALE: 1/2"=1'-0"

E CENTER OF RUN DRAINAGE DETAIL
E-1 E-3 SCALE: 1/2"=1'-0"



B ENLARGED POWER LAYOUT—SOUTH CENTER
E-2 E-3 SCALE: 1/2"=1'-0"

- 28 LATERAL UNDERGROUND 4" PVC SCHEDULE 40 CONDUIT. PROVIDE HOLE THROUGH PANEL VAULT WALL WITH BELL END FITTING AND EFFECTIVELY SEAL AGAINST INGRESS OF MOISTURE. PROVIDE 4" RIGID STEEL TAPED ELL AT TRANSFORMER STUB UP.
- 29 EXISTING GUARD POST TO BE REMOVED BY ZOO.
- 30 GUARD POST. 5 FT. LONG 4" RIGID STEEL PIPE CONCRETE FILLED. ANCHOR IN 12" DIAMETER X 24" DEEP CONCRETE ENCASUREMENT BELOW FINISH GRADE WITH 3 FT. OF PIPE ABOVE GRADE. PAINT BRIGHT YELLOW.
- 31 LATERAL UNDERGROUND FEEDER CONDUITS BY ZOO FROM ENDS OF CONTRACTOR INSTALLED STUB OUTS.
- 32 *PAD MOUNTED TRANSFORMER. 150 KVA RATING.
- 33 TWO 3" CONDUITS EA. WITH 4#350 MCM (PH. & N.) AND 1#2 (GRD.) THW CU.
- 34 2" CONDUIT STUB OUT.
- 35 PAD MOUNTED EXTERIOR SERVICE ENTRANCE PANELBOARD. SAME AS KEYED NOTE 8 BUT 600A M.L.O. PROVIDED WITH TWO 200 AMP AND TWO TWIN 100 AMP BRANCH SWITCHES. APPROXIMATE DIMENSIONS 60"H X 38"W X 18"D.
- 36 EXISTING TELEPHONE TERMINAL TO REMAIN.
- 37 EXISTING CMU RETAINING WALL.
- 38 VERTICAL CHANNEL SUPPORT. UNISTRUT P5000 PERMA-GREEN.
- 39 HORIZONTAL CHANNEL SUPPORT WELDED TO VERTICAL CHANNEL SUPPORTS AND SAME TYPE.
- 40 PANELBOARD FIXING, TYPICAL OF 8. UNISTRUT P5508 SPRING NUT WITH 3/8" X 1" HEX. HEAD SCREW AND LOCK WASHER.
- 41 APPLY TWO COATS OF BITUMASTIC PAINT TO BOTTOM PARTS OF PANELBOARD.
- 42 CONCRETE ENCASUREMENT FOR VERTICAL SUPPORT.

* TRANSFORMER PROVIDED BY ZOO. INSTALLATION BY CONTRACTOR.

KEYED NOTES

- 1 GROUND ROD
- 2 4/0 AWG STRANDED CU. GROUND WIRE DIRECT BURIED AT 12" BELOW FINISH GRADE.
- 3 TWO CONCRETE ENCASED 4" CONDUITS STUBBED OUT.
- 4 STUB OUT MARKER. VERTICALLY DRIVEN REBAR WITH 1" EXPOSED AND PAINTED BRIGHT YELLOW ABOVE FINISH GRADE.
- 5 3" CONDUIT STUB OUT.
- 6 1-1/2" CONDUIT STUB OUT.
- 7 4" CONDUIT STUB OUT.
- 8 PAD MOUNTED EXTERIOR SERVICE ENTRANCE PANELBOARD. 120/208 VOLT 3 PHASE 4 WIRE. 1200 AMP M.L.O. APPROXIMATE DIMENSIONS 90"H X 38"W X 18"D. PROVIDE 600 AMP 3 POLE SWITCH AT BOTTOM WITH LOAD SIDE LUGS ON LEFT SIDE. FIT WITH 600 AMP FUSES. PROVIDE SPACES ONLY FOR FUTURE INSERTION OF ONE 200 AMP AND TWO TWIN 100 AMP BRANCH SWITCHES. PROVIDE 9 INCHES OF FILLER PLATE.
- 9 CONCRETE PAD WITH 4 - 6" SQ. WIRE MESH REINFORCEMENT THROUGH MIDDLE. 1" CHAMFER ON TOP EDGES.
- 10 THREE 4" CONDUITS EA. WITH 3#500 (PH.) 1#350 MCM (N.) AND 1# 1/0 (GRD.) THW CU.
- 11 1" CONDUIT WITH 4/0 AWG STRANDED COPPER GROUNDING ELECTRODE CONDUCTOR. BOND TO CONDUIT AT BOTH ENDS.
- 12 TRANSFORMER WIRING TROUGH AREA WITH NO CONCRETE. BRING ALL CONDUITS AND GROUND ROD UP FLUSH WITH TOP OF PAD. PROVIDE INSULATED GROUNDING BUSHINGS ON ENDS OF ALL CONDUITS. TERMINATE GROUND CONDUCTORS AT BUSHINGS. INTERCONNECT BUSHINGS WITH #2 BARE COPPER AND EXTEND TO GROUND ROD.
- 13 4" PRIMARY CONDUIT WITH PRIMARY CABLES PER KEYED NOTE 16.
- 14 EXISTING CONCRETE PAD.
- 15 EXISTING GROUND ROD.
- 16 EXISTING S & C PRIMARY SWITCH. INSTALL 3 STANDARD TCC 153.1 100E FUSES CAT. # 613100 IN EXISTING FUSEHOLDERS IN COMPARTMENT #1. PROVIDE THREE (3) SPARE FUSES OF THE SAME TYPE AND RATING IN THEIR ORIGINAL BOXES AND LEAVE IN THE COMPARTMENT DOOR STORAGE RACK.

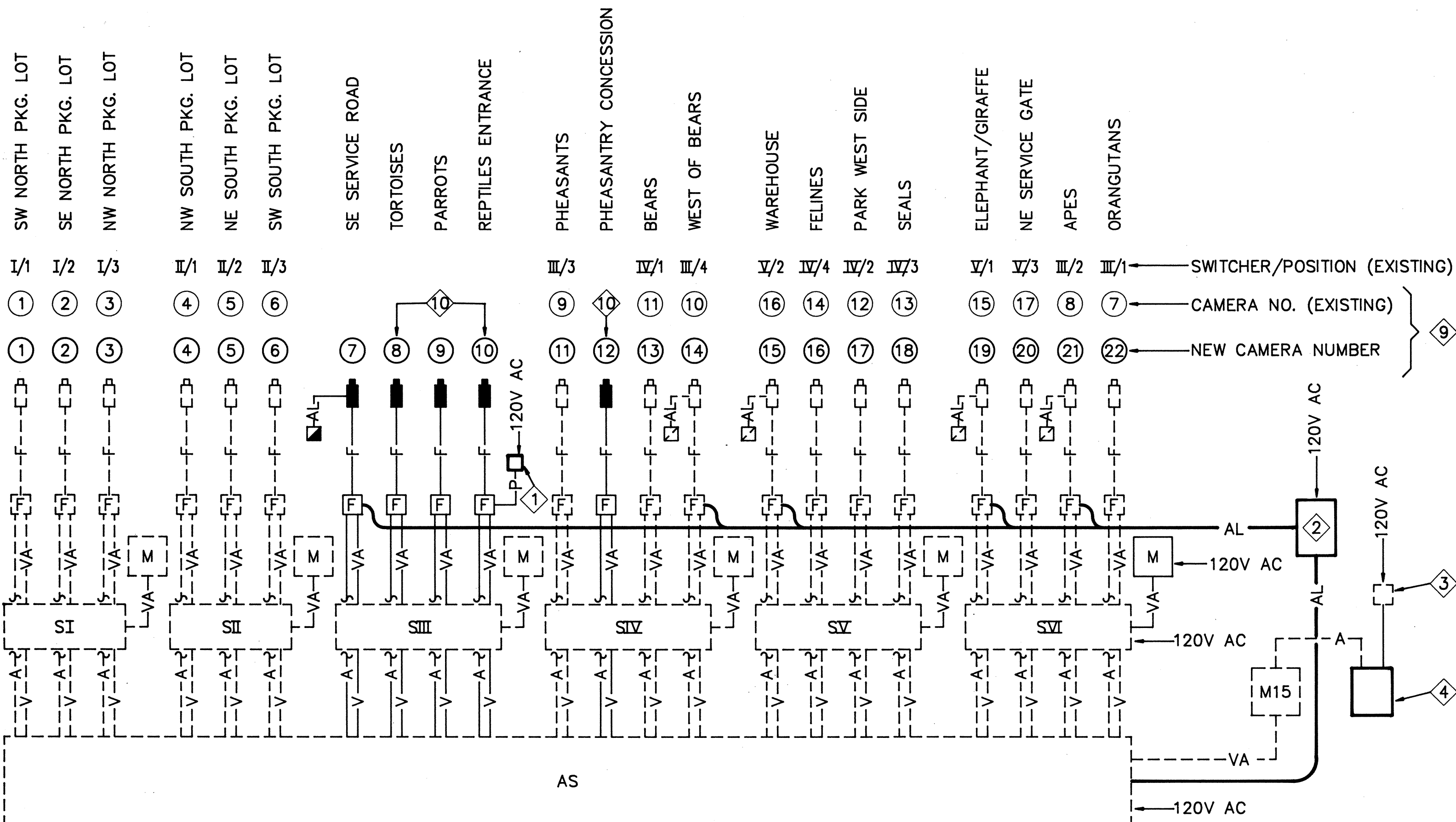
INSTALL THREE (3) NEW #2 AWG STRANDED ALUM. 15KV 100% INSULATION LEVEL PRIMARY URD CABLES WITH COPPER CONCENTRIC NEUTRAL AND 0.175 INCH CROSS LINK POLYETHYLENE INSULATION FROM LOAD SIDE OF COMPARTMENT #1 FUSES TO PRIMARY OF NEW PAD MOUNTED TRANSFORMER BY WAY OF NEW 4" CONDUIT.

PROVIDE AND INSTALL THREE (3) 3M TYPE 4601-2 TERMINATION KITS & S & C CATALOG #4745 CONNECTORS AND TERMINATE THE CABLES. TERMINATE THE CABLE NEUTRALS AT THE EXISTING GROUND CONNECTOR STUD IN THE SAME COMPARTMENT.

INSTALL A GROUNDING BUSHING ON THE END OF THE NEW 4" CONDUIT STUBBED UP IN COMPARTMENT #1 AND A #2 AWG STRANDED COPPER GROUND WIRE FROM THE BUSHING TO THE COMPARTMENT GROUND STUD. INSTALL A #2 AWG STRANDED COPPER GROUND WIRE FROM THE EXISTING COMPARTMENT GROUND STUD TO THE GROUND ROD IN THE COMPARTMENT.
- 17 EXISTING PNM METERING TRANSCLOSURE.
- 18 *PAD MOUNTED TRANSFORMER. 300KVA RATING.
- 19 POLE FOR SECURITY CAMERA #12. POLE TO BE PROVIDED AND SET BY ZOO. FUTURE WORK (N.I.C.).
- 20 3/4" CONDUIT BY ZOO. F.O. CABLE, 3#10 THWN CU PWR. CONDUCTORS AND PULL LINE BY CONTRACTOR.
- 21 EXISTING 12 X 12 X 6 SECURITY J-BOX. LEAVE 40 FT. OF F.O. FOR FUTURE CAMERA #12 COILED INSIDE.
- 22 EXISTING GUARD POST, TO REMAIN.
- 23 EXISTING PRIMARY POWER PANEL VAULT, TO REMAIN.
- 24 EXISTING UNDERGROUND PRIMARY POWER CONDUIT AND CONDUCTORS, TO REMAIN.
- 25 EXISTING PRIMARY POWER CONDUCTORS, TO REMAIN.
- 26 EXISTING ELASTIMOLD #150T TEE SPLICES (3). PROVIDE ELASTIMOLD. 151SP STRAIGHT PLUGS (3) FOR NEW TAP FEED.
- 27 PRIMARY CONDUCTORS, SAME TYPE AS PER KEYED NOTE 16.

1 2 3 4 5 6 7 8 9 10 11 12
26 26330486

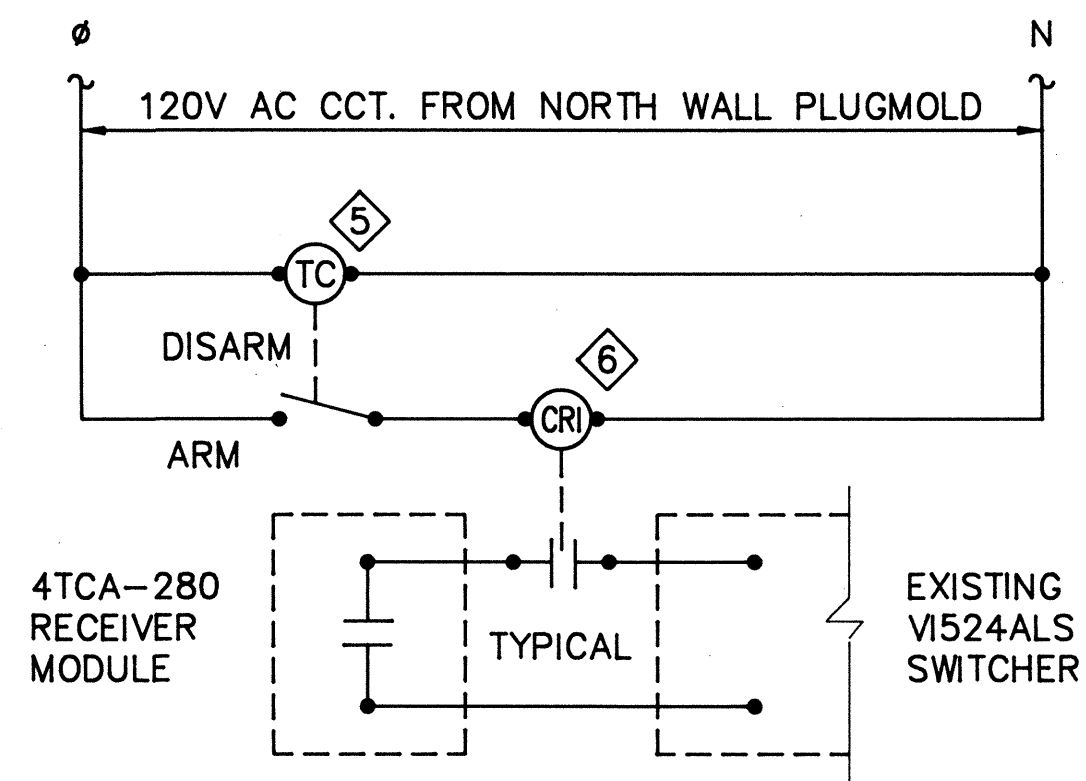
CITY OF ALBUQUERQUE MUNICIPAL DEVELOPMENT DEPARTMENT ENGINEERING DIVISION					
TITLE: RIO GRANDE ZOOLOGICAL PARK SOUTH SIDE POWER & SECURITY SUPPORT FACILITIES DETAILS SHEET 1					
APPROVALS	ENGINEER	DATE	APPROVALS	ENGINEER	DATE
City Engineer	<i>[Signature]</i>	6/3/86	Liquid Waste	<i>[Signature]</i>	6/3/86
A.C.E. Design	<i>[Signature]</i>	6-3-86	Traffic	<i>[Signature]</i>	6/3/86
A.C.E.-Hydrology	<i>[Signature]</i>	6-3-86	Water	<i>[Signature]</i>	6/3/86
DRAWING NO. 2633		MAP NO.		SHEET 4 OF 5	



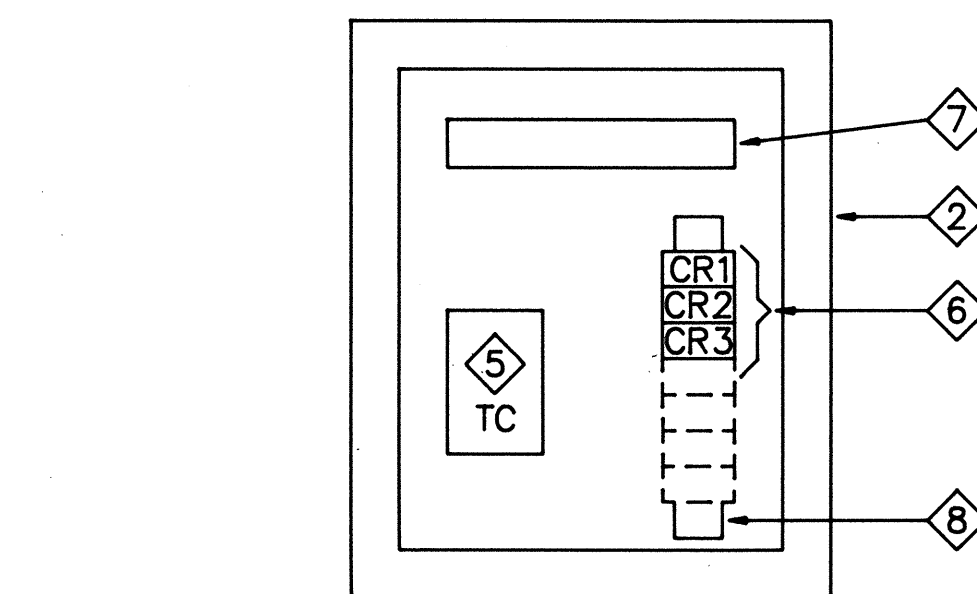
A SECURITY SYSTEM SCHEMATIC DIAGRAM
E-4E-4 NOT TO SCALE

DIAGRAM LEGEND

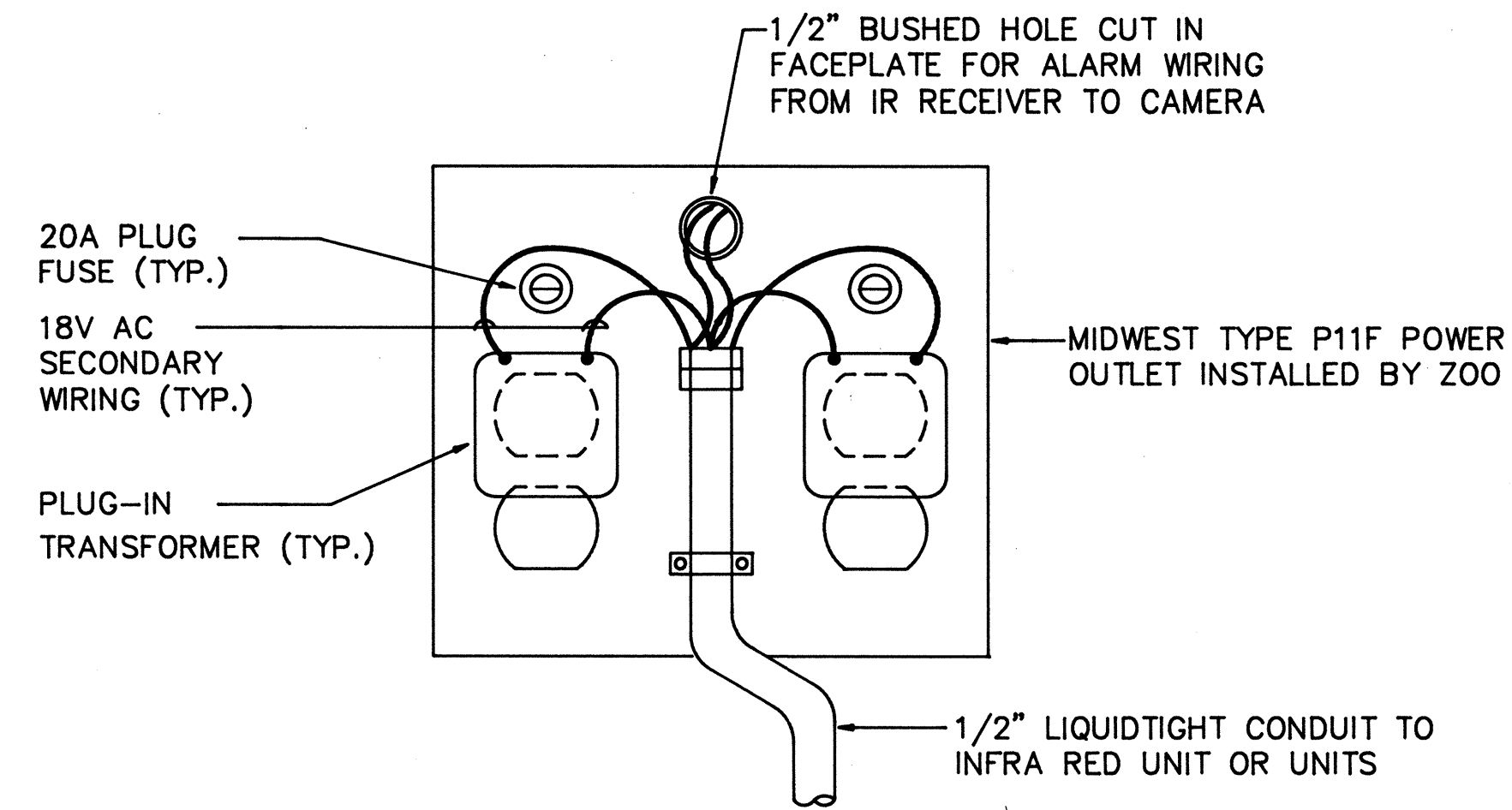
- NEW CAMERA
- EXISTING CAMERA
- [F] NEW FIBER OPTIC RECEIVER
- [F] EXISTING FIBER OPTIC RECEIVER
- NEW INFRA RED SENSING SYSTEM
- EXISTING INFRA RED SENSING SYSTEM
- [M] NEW 9" MONITOR
- [M] EXISTING 9" MONITOR
- [M15] EXISTING 15" MONITOR
- [S] EXISTING 4-POSITION SWITCHER
- [AS] EXISTING 24-POSITION ALARM SWITCHER
- F— NEW FIBER OPTIC CABLE
- F-- EXISTING FIBER OPTIC CABLE
- AL— NEW ALARM CIRCUIT WIRING
- AL-- EXISTING ALARM CIRCUIT WIRING
- V— NEW VIDEO CABLE
- V-- EXISTING VIDEO CABLE
- A— NEW AUDIO CABLE
- A-- EXISTING AUDIO CABLE
- VA— NEW SEPARATE VIDEO AND AUDIO CABLES
- VA-- EXISTING VIDEO AND AUDIO CABLES
- P— 12V AC POWER SUPPLY



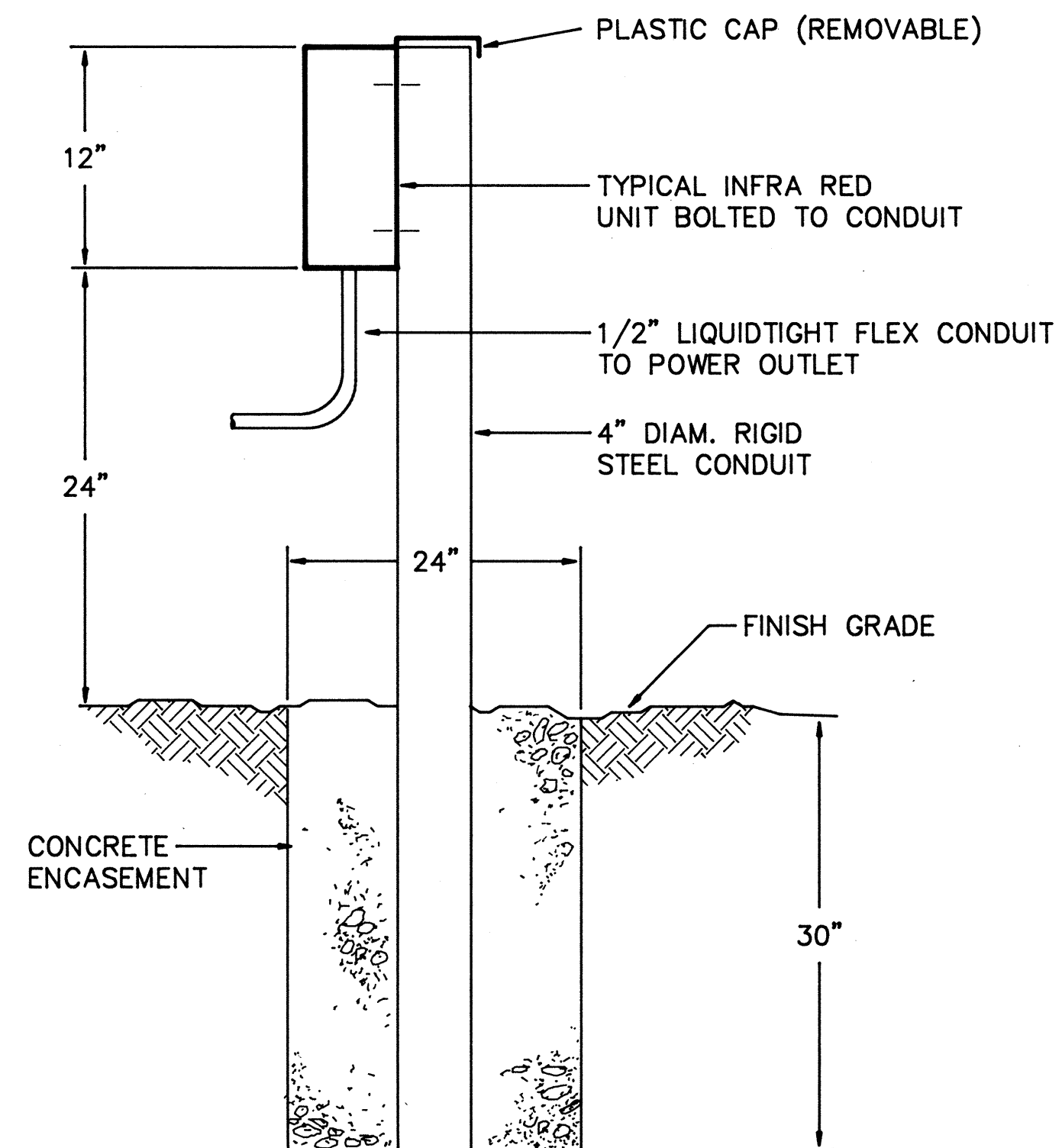
B IR ALARM AUTOMATIC ARM/DISARM CONTROL DIAGRAM
E-4E-4 NOT TO SCALE



C IR ALARM CONTROL PANEL
E-4E-4 SCALE: 1-1/2" = 1'-0"



D INFRA RED POWER OUTLET (TYPICAL)
E-4E-4 NOT TO SCALE



E INFRA RED UNIT MOUNTING DETAIL
E-4E-4 NOT TO SCALE

KEYED NOTES

1. PLUG-IN POWER SUPPLY. TYPICAL FOR ALL NEW F.O. TRANSMITTERS AND RECEIVERS.
2. NEW IR ALARM CONTROL PANEL. MOUNT ON NORTH WALL OF SECURITY OFFICE BEHIND CONSOLE. SEE DETAILS B & C ON THIS SHEET.
3. EXISTING POWER SUPPLY FOR DESK TOP MANUAL IR ALARM AND 15" MONITOR AUDIO AMP/SPEAKER/CONTROL UNIT. THIS CONTROL UNIT IS TO BE REMOVED BY CONTRACTOR. RELOCATE EXISTING AMP, SPEAKER AND POTENTIOMETER INTO NEW AUDIO UNIT PER KEYED NOTE 4. RELOCATE POWER SUPPLY BEHIND NEW AUDIO UNIT.
4. NEW AUDIO UNIT FOR 15" MONITOR. LOWELL HISP-4 COVER AND PIX-4 BOX. RELOCATE EXISTING AMP, SPEAKER AND POTENTIOMETER PER KEYED NOTE 3 INTO THIS UNIT. LOCATE UNIT ADJACENT TO 15" MONITOR WITH MAJOR AXIS VERTICAL. CONNECT EXISTING AUDIO AND POWER SUPPLY CABLES.
5. TIME CLOCK.
6. CONTROL RELAY.
7. TERMINAL BLOCKS.
8. RELAY MOUNTING TRACK.
9. REVISE EXISTING CABLING BETWEEN SWITCHERS AND BETWEEN F.O. RECEIVERS AND SWITCHERS TO SUIT NUMBERING CHANGES. RENUMBER AND RELABEL ALL CABLES AND EQUIPMENT IN ACCORDANCE WITH SPEC. SECTION 16195, ELECTRICAL IDENTIFICATION.
10. FUTURE CAMERA, F.O. RECEIVER AND POWER SUPPLY AND CABLING (N.I.C.). LEAVE SPACE ONLY FOR FUTURE INSERTION.

AS BUILT INFORMATION				BENCH MARKS				SURVEY INFORMATION				ENGINEER'S SEAL			
CONTRACTOR	WORK BY	DATE	DATE	NO.	BY	DATE	DATE	NO.	BY	DATE	DATE				
INSPECTED BY	ACCEPTANCE BY	DATE	DATE	NO.	BY	DATE	DATE	NO.	BY	DATE	DATE				
VERIFICATION BY	DATE	DATE	DATE	NO.	BY	DATE	DATE	NO.	BY	DATE	DATE	REMARKS REVISIONS DESIGN			
DRAWINGS	DATE	DATE	DATE	NO.	BY	DATE	DATE	NO.	BY	DATE	DATE				
MICRO-FILM INFORMATION	RECORDED BY	NO.	NO.	NO.	BY	DATE	DATE	NO.	BY	DATE	DATE	DESIGNED BY	DATE 1/20/86	DATE 1/27/86	DATE 1/28/86
												DRAWN BY	DATE 1/20/86	DATE 1/27/86	DATE 1/28/86
												CHECKED BY	DATE 1/20/86	DATE 1/27/86	DATE 1/28/86

26 2633 0586

CITY OF ALBUQUERQUE MUNICIPAL DEVELOPMENT DEPARTMENT ENGINEERING DIVISION					
TITLE: RIO GRANDE ZOOLOGICAL PARK SOUTH SIDE POWER & SECURITY SUPPORT FACILITIES DETAILS SHEET 2					
APPROVALS	ENGINEER	DATE	APPROVALS	ENGINEER	DATE
City Engineer	Andrew D.	6/3/86	Liquid Waste	N.A. P. Pena	6/3/86
A.C.E. Design	Joe D. Smith	6-3-86	Traffic	W.A. P. Pena	6/3/86
A.C.E. Hydrology	N.A. P. Pena	6-3-86	Water	N.A. P. Pena	6/3/86
DRAWING NO.	2633	MAP NO.	SHEET 5 OF 5		