

DRAWING NUMBER

DRAWING NUMBER

DRAWING NUMBER

DRAWING NUMBER

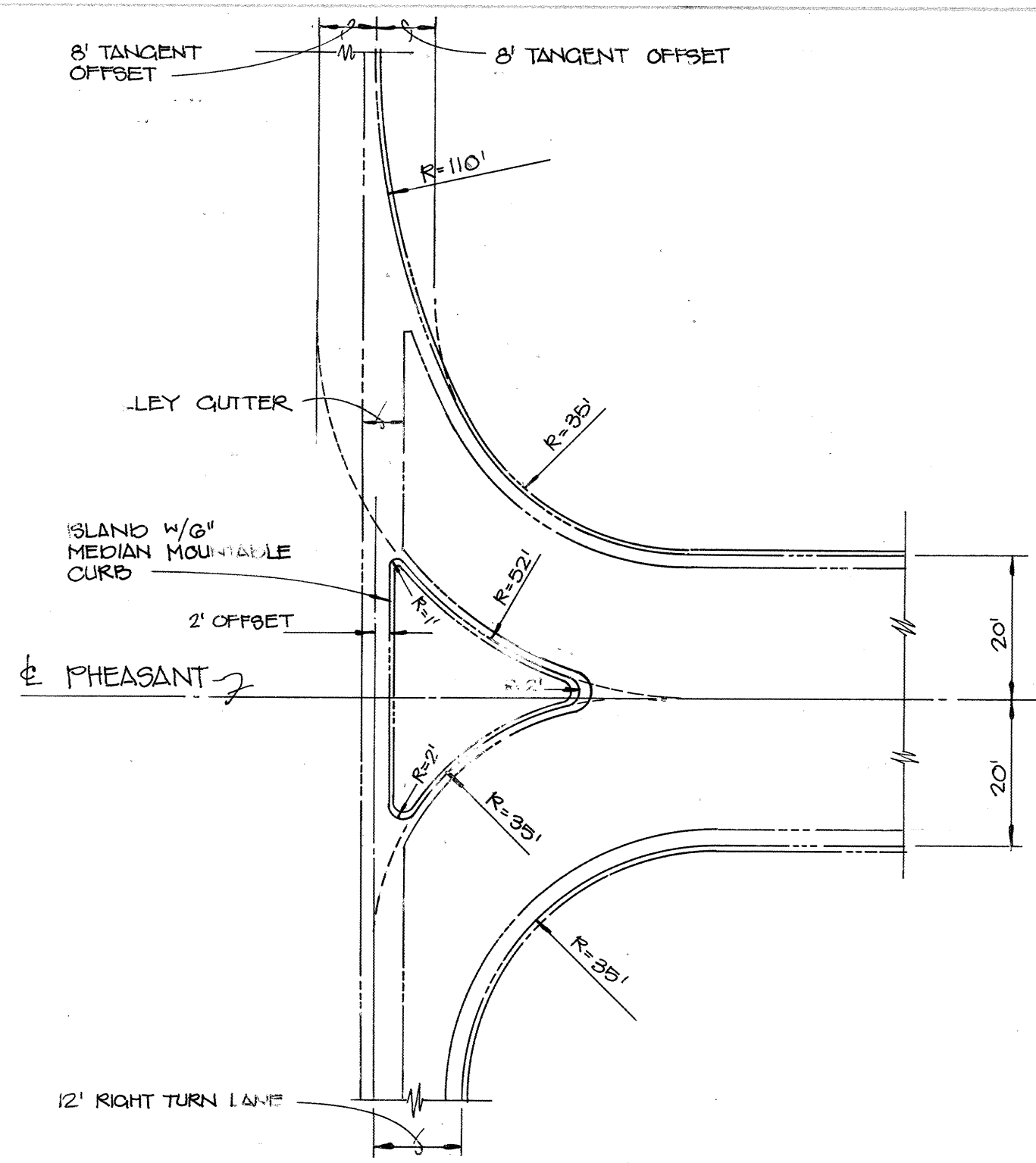
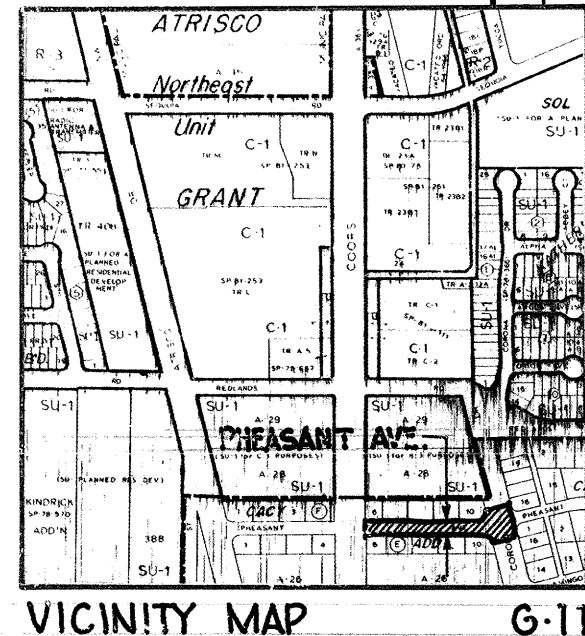
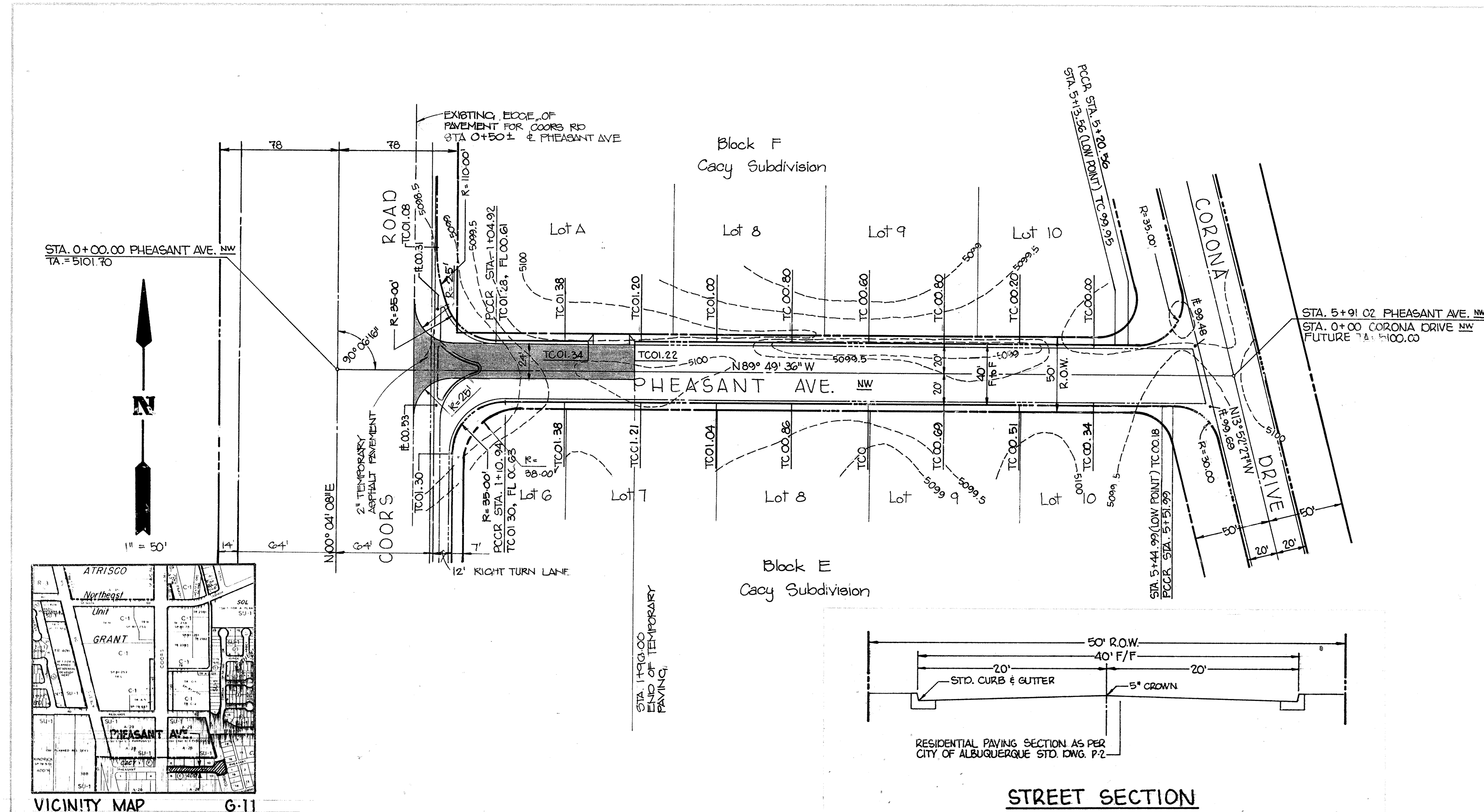
SARGO PRODUCTS • NEW HOPE, MINNESOTA  
REPRODUCED BY PART NUMBER 8553  
COPYRIGHT 1985 BY SARGO PRODUCTS

SARGO PRODUCTS • NEW HOPE, MINNESOTA  
REPRODUCED BY PART NUMBER 8553  
COPYRIGHT 1985 BY SARGO PRODUCTS

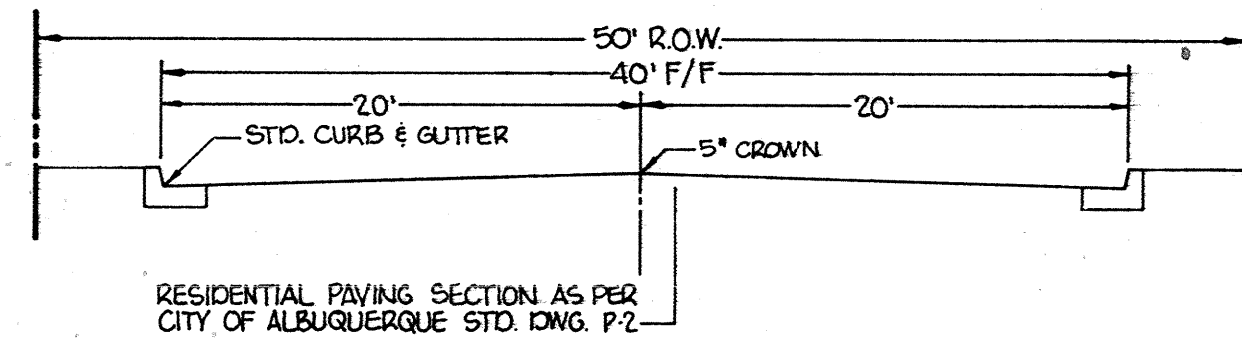
SARGO PRODUCTS • NEW HOPE, MINNESOTA  
REPRODUCED BY PART NUMBER 8553  
COPYRIGHT 1985 BY SARGO PRODUCTS

SARGO PRODUCTS • NEW HOPE, MINNESOTA  
REPRODUCED BY PART NUMBER 8553  
COPYRIGHT 1985 BY SARGO PRODUCTS

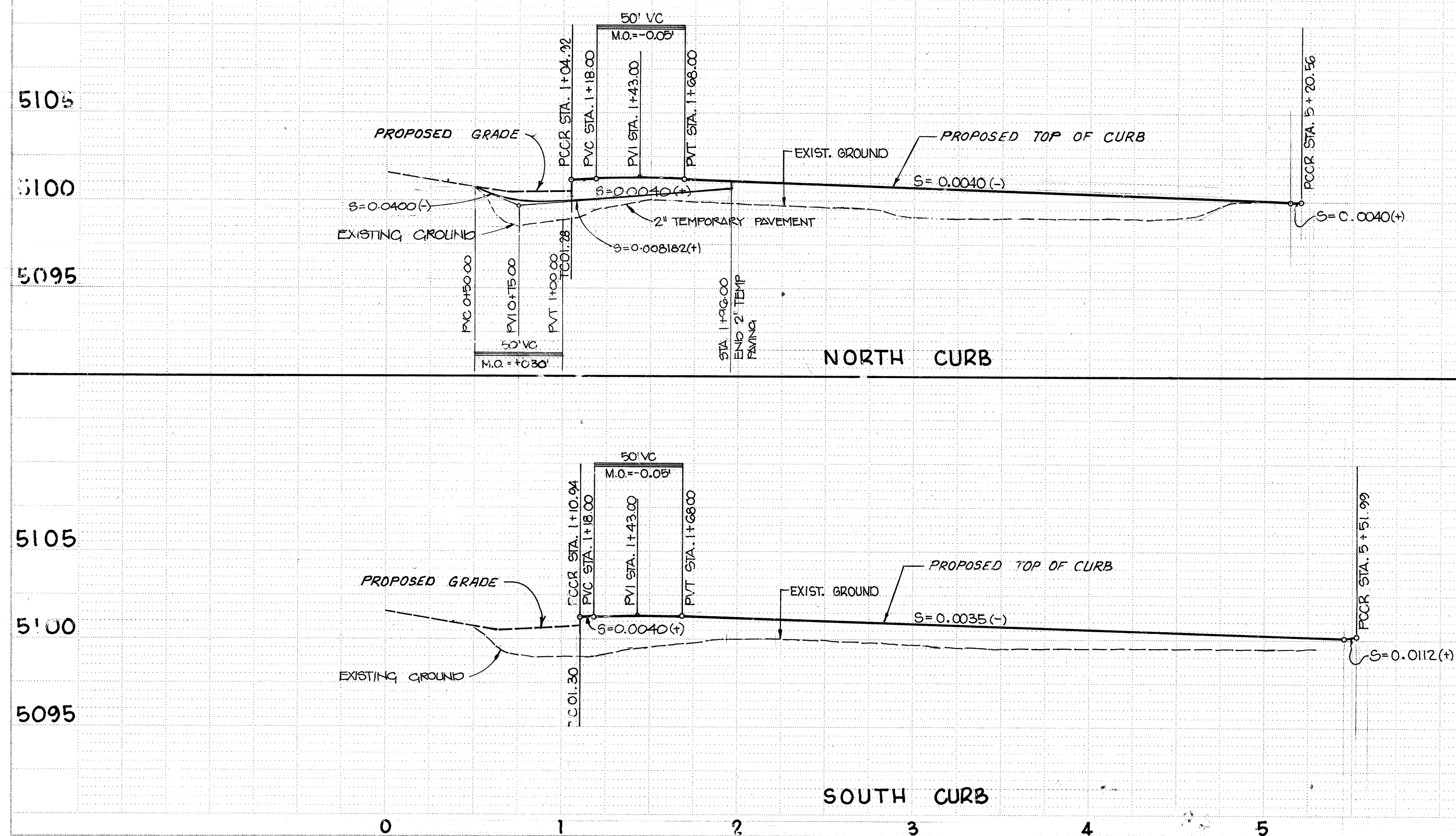
SCANNED  
BY LAS 504



ISLAND DETAIL



STREET SECTION



GENERAL NOTES:

1. All work detailed on these plans to be performed under contract shall, except as otherwise stated or provided for herein, be constructed in accordance with "City of Albuquerque Interim Standard Specifications Public Works Construction, 1985."
2. Two (2) working days prior to any excavation, Contractor shall contact Line Locating Service at 765-1234, for location of existing lines.
3. References made to Standard Drawings refer to City of Albuquerque Standard Detail Drawings.
4. Stations shown are centerline stations.
5. Prior to construction, the Contractor shall excavate and verify the horizontal and vertical locations of all obstructions. Should a conflict exist, the Contractor shall notify the Engineer so that the conflict can be resolved with a minimum amount of delay.
6. All utilities and utility service lines shall be installed prior to paving.
7. Tack coat requirements shall be determined by the City Engineer.
8. Backfill compaction shall be according to specified street use.
9. Measurement for payment of subgrade preparation for roadway pavement will be made along the plane of the work and from lip of gutter to lip of gutter or edge of pavement as applicable.
10. Subgrade preparation under curb and gutter including one (1) foot behind back of curb, under valley gutters, under median pavement and sidewalks, shall be considered incidental to the construction of such and shall be included in the bid price for such items.
11. A disposal site for all excess earth material and for removal items shall be obtained by the Contractor. The site shall be in compliance with applicable environmental regulations and approved by the City Engineering Department. All costs incurred in obtaining a disposal site and haul thereto shall be considered incidental to construction and no direct payment will be made therefor.
12. Contractor shall be responsible for obtaining all or any borrow material. All borrow material shall be approved by the Engineer prior to incorporation of any material in the project.
13. Dimensions shown are to the face of curb unless otherwise noted.
14. All permanent pavement marking and traffic signing will be performed by the City of Albuquerque, Traffic Engineering Department.
15. Prior to construction, the Contractor shall submit a traffic control plan to the City Traffic Engineering Division for approval.

APPROVED FOR GRADES ONLY: *[Signature]* 5/1/86

CITY OF ALBUQUERQUE  
MUNICIPAL DEVELOPMENT DEPARTMENT  
ENGINEERING DIVISION

TITLE:			FOR STREET			GRADES ONLY		
PHEASANT AVENUE			PAVING P&P					
APPROVALS	ENGINEER	DATE	APPROVALS	ENGINEER	DATE	APPROVALS	ENGINEER	DATE
City Engineer	<i>[Signature]</i>	5/1/86	Liquid Waste	<i>[Signature]</i>	5/1/86	City Engineer	<i>[Signature]</i>	5/1/86
A.C.E.-Design			Traffic			A.C.E.-Design		
A.C.E.-Hydrology			Water			A.C.E.-Hydrology		

DRAWING NO. 2875 MAP NO. SHEET 1 OF 1