

SMITH
ENGINEERING

**Smith
Engineering
Company**

Solutions for Today... Vision for Tomorrow

32301 San Pedro Dr., NE 1 Building 4, Suite 200 | Albuquerque, NM 87110 | 505.844.6730 | smithengineering.com

D:\SEC---PROJECTS\117106-04\CADD\PLANSET\117106-04_GEN NOTES.dwg

GENERAL NOTES:

1. SEVEN (7) WORKING DAYS PRIOR TO BEGINNING CONSTRUCTION, THE CONTRACTOR WILL SUBMIT A DETAILED CONSTRUCTION SCHEDULE TO THE CITY CONSTRUCTION COORDINATION DIVISION. TWO (2) WEEKS PRIOR TO CONSTRUCTION, THE CONTRACTOR SHALL SUBMIT A TRAFFIC CONTROL PLAN TO THE ENGINEER FOR APPROVAL.
2. SPECIFICATIONS USED FOR THIS PROJECT ARE THE CITY OF ALBUQUERQUE STANDARD SPECIFICATIONS FOR PUBLIC WORKS CONSTRUCTION, 1986 EDITION THROUGH UPDATE NO. 9 INCLUDING ALL SUBSEQUENT UPDATES AND AMENDMENTS.
3. ALL NEW MANHOLES SHALL BE TYPE "C" PER CITY OF ALBUQUERQUE STANDARD DRAWINGS 2101 UNLESS OTHERWISE NOTED ON THE PLANS. ALL MANHOLES SHALL INCLUDE PLACEMENT OF EMD'S.
4. THE CONTRACTOR WILL BE RESPONSIBLE FOR DISPOSING OF ALL DEBRIS, INCLUDING, BUT NOT LIMITED TO HAZARDOUS WASTE AT DISPOSAL SITES APPROVED BY GOVERNMENTAL AGENCIES REGULATING THE DISPOSAL OF SUCH MATERIALS.
5. SUBGRADE PREPARATION UNDER SIDEWALKS AND DRIVE PADS, AND SUBGRADE AND SUBBASE PREPARATION UNDER CURB AND GUTTER IS CONSIDERED INCIDENTAL TO THE CONSTRUCTION OF SUCH, AND NO DIRECT PAYMENT SHALL BE MADE FOR THOSE ITEMS OF WORK.
6. ALL EXCAVATION WILL BE GOVERNED BY FEDERAL, STATE AND LOCAL LAWS RULES, AND REGULATIONS CONCERNING CONSTRUCTION SAFETY AND HEALTH.
7. ALL SIGNS AND PAVEMENT MARKINGS WILL BE IN ACCORDANCE WITH THE "MANUAL ON UNIFORM TRAFFIC CONTROL DEVICES FOR STREETS AND HIGHWAYS" CURRENT EDITION PUBLISHED BY THE U.S. DEPARTMENT OF TRANSPORTATION.
8. THE CONTRACTOR IS TO EXERCISE CARE TO AVOID DISTURBING ANY EXISTING UNDERGROUND UTILITIES. IT WILL BE HIS RESPONSIBILITY TO COORDINATE WITH THE UTILITY COMPANIES IN ORDER TO PREVENT ANY SERVICE DISRUPTION. SEE SECTION 18 "UTILITIES", CITY OF ALBUQUERQUE, STANDARD SPECIFICATIONS FOR CONTRACTOR REQUIREMENTS.
9. WHEN ABUTTING NEW PAVEMENT TO EXISTING PAVEMENT, SAW CUT EXISTING PAVEMENT TO A STRAIGHT LINE AND AT RIGHT ANGLES AND REMOVE ANY BROKEN OR CRACKED PAVEMENT. NO DIRECT PAYMENT WILL BE MADE FOR SAW CUTTING.
10. ALL GAS VALVES, GAS MANHOLES, ELECTRICAL MANHOLES, TELEPHONE MANHOLES, AND UTILITY POLES WILL BE ADJUSTED TO GRADE BY EACH UTILITY COMPANY. CONTRACTOR WILL COORDINATE THROUGH CITY UTILITY COORDINATOR.
11. WHEN REMOVAL OF EXISTING CURB AND GUTTER OR SIDEWALK IS REQUIRED, REMOVE BACK TO NEAREST SUITABLE JOINT UNLESS OTHERWISE DIRECTED BY THE CONSTRUCTION ENGINEER.
12. THE CONTRACTOR WILL NOTIFY NEW MEXICO ONE CALL SYSTEM (280-1990).
13. CONTRACTOR WILL PLACE BITUMINOUS MATERIAL WITH THE USE OF A LAYDOWN MACHINE WHERE PAVEMENT IS 8 FEET IN WIDTH OR WIDER.
14. CONTRACTOR WILL NOT PAVE OVER ANY SURFACE FEATURE, I.E., GAS VALVE MANHOLE COVER, ETC.
15. CONTRACTOR WILL CONFINE HIS WORK WITHIN THE CONSTRUCTION EASEMENT LIMITS AND/OR RIGHT-OF-WAY, OR PROVIDE COPIES OF AGREEMENTS WITH ADJACENT LANDOWNERS TO THE CITY OF ALBUQUERQUE.
16. MINIMUM BOTTOM WIDTH OF TRENCHES FOR RIGID PIPE SHALL BE EQUAL TO THE MATERIAL SHALL BE CLASS II, III, OR IV OUTSIDE DIAMETER PLUS 24 INCHES. BEDDING NOTED ON THE PLANS. UNLESS OTHERWISE SPECIFICALLY.
17. MINIMUM BOTTOM WIDTH OF TRENCHES FOR NON-RIGID PIPE SHALL BE EQUAL TO MATERIAL SHALL BE CLASS I, II, OR III THE OUTSIDE DIAMETER PLUS 18-INCH BEDDING.
18. THE CONTRACTOR AGREES TO TAKE NECESSARY SAFETY PRECAUTIONS AS REQUIRED BY FEDERAL, STATE AND LOCAL AUTHORITIES TO PROTECT PEDESTRIAN AND VEHICULAR TRAFFIC IN THE CONSTRUCTION AREA, WHICH INCLUDE BUT ARE NOT LIMITED TO: MAINTAINING ADEQUATE WARNING SIGNS, BARRICADES, LIGHTS, GUARD FENCES, WALKS AND BRIDGES.
19. PRIOR TO CONSTRUCTION, THE CONTRACTOR WILL EXCAVATE AND VERIFY THE HORIZONTAL AND VERTICAL LOCATIONS OF ALL POTENTIAL CONFLICTING UTILITIES. SHOULD A CONFLICT EXIST BETWEEN THE FIELD INFORMATION AND THE PLANS, THE CONTRACTOR WILL NOTIFY THE ENGINEER SO THE CONFLICT CAN BE RESOLVED WITH MINIMUM AMOUNT OF DELAY.
20. THE REPLACEMENT OF THE EXISTING UTILITIES AND THE INSTALLATION OF NEW UTILITY LINES WILL BE COMPLETED IN ADVANCE OF STARTING THE PAVEMENT WORK. TEMPORARY PAVEMENT WILL BE PLACED IN ALL TRENCHES REQUIRED FOR THE UTILITY REPLACEMENTS IN THOSE AREAS THAT MUST MAINTAIN TRAFFIC UNTIL THE FINAL PAVEMENT WORK STARTS IN EACH AREA. TEMPORARY STRIPING SHALL BE THE CONTRACTOR'S RESPONSIBILITY. MAINTENANCE OF THE TEMPORARY PAVING AND STRIPING WILL BE AT THE CONTRACTOR'S EXPENSE.
21. TACK COAT FOR SURFACE COURSE REQUIREMENTS WILL BE DETERMINED BY THE CONSTRUCTION ENGINEER.
22. BACKFILL COMPACTION SHALL BE ACCORDING TO SPECIFIED USE.
23. ALL NEW PAVING, DRIVEWAYS, SIDEWALKS, AND CURB AND GUTTERS, ABUTTING EXISTING AREAS SHALL MATCH THE ELEVATION OF THOSE AREAS.
24. PERMANENT PAVEMENT STRIPING AND MARKINGS WILL BE PLACED BY THE CONTRACTOR. ROAD SHALL NOT BE OPENED TO TRAFFIC UNTIL IT IS STRIPED. ALL STRIPING, PAVEMENT MARKINGS INCLUDING CROSSWALKS, ARROWS AND LINE MARKINGS ARE TO BE CONSTRUCTED OF PAINT IN ACCORDANCE WITH THE MANUAL ON UNIFORM TRAFFIC CONTROL DEVICES.
25. ALL EXCAVATED MATERIAL THAT IS NOT REQUIRED TO BE REUSED MUST BE REMOVED FROM THE PROJECT AREA WITHIN FOUR DAYS OF EXCAVATION. SPOIL PILES WILL BE ALLOWED ONLY AS DIRECTED BY THE ENGINEER.
26. THE CONTRACTOR WILL COORDINATE THE CONSTRUCTION ACTIVITIES WITH ALL OTHER CONTRACTORS AND UTILITY COMPANIES WORKING IN THE SAME AREA. THE CONTRACTOR MAY BE REQUIRED TO RESCHEDULE THEIR ACTIVITIES TO ALLOW UTILITY CREWS TO PERFORM THEIR REQUIRED WORK. NO ADDITIONAL COMPENSATION WILL BE ALLOWED FOR DELAYS OR

- INCONVENIENCE CAUSED BY UTILITY COMPANY WORK CREWS. A CONTRACT EXTENSION MAY BE ALLOWED AS DELINEATED IN CITY OF ALBUQUERQUE STANDARD SPECIFICATIONS.
27. EXISTING CURB AND GUTTER, NOT DISTURBED BY CONTRACTOR, BUT OUT OF ALIGNMENT, DISPLACED VERTICALLY, BADLY BROKEN AND/OR DETERIORATED, WILL BE REPLACED AS DIRECTED BY THE CONSTRUCTION ENGINEER AND PAID FOR AT CONTRACT UNIT PRICES.
28. ALL UTILITY LINES WHICH ARE NOT SPECIFICALLY DESIGNATED TO BE REMOVED AND REPLACED ON THE PLANS, WILL BE MAINTAINED IN SERVICE. SHORING, SHEETING AND OTHER MEANS OF SUPPORT SHALL BE EMPLOYED BY THE CONTRACTOR TO PREVENT DAMAGE OR LOSS OF THESE EXISTING UTILITIES. BEAM AND CABLE OR OTHER ADEQUATE SUPPORTS WILL BE USED FOR TEMPORARY SUPPORT OF ALL UTILITY LINES WHICH CROSS THE TRENCH. ANY DAMAGE TO EXISTING UTILITIES WILL IMMEDIATELY AND WITHOUT DELAY BE REPAIRED AT THE CONTRACTOR'S EXPENSE. THE CONTRACTOR WILL NOTIFY THE ENGINEER IMMEDIATELY OF ANY SIGNIFICANT DEVIATION OF EXPOSED UTILITIES FROM THE LOCATIONS SHOWN ON THE PLANS SO THAT CONFLICTS CAN BE RESOLVED IN A TIMELY MANNER.
29. THE CONTRACTOR WILL ASSUME RESPONSIBILITY FOR ANY DAMAGE TO EXISTING INFRASTRUCTURE (C & G, PAVING, ETC.) DURING CONSTRUCTION, APART FROM THOSE SECTIONS INDICATED FOR REMOVAL ON THE PLANS, AND WILL REPAIR OR REPLACE SAME AT HIS OWN EXPENSE. HE WILL SUITABLY PROTECT THE CURB AND GUTTER FROM INCIDENTAL SPLASHING DURING THE TACK COAT APPLICATION AND WILL BE RESPONSIBLE FOR CLEANING SAME AT HIS OWN COST SHOULD SPLASHING OCCUR.
30. ALL INTERFERING PORTIONS OF ABANDONED UTILITY LINES WHICH ARE EXPOSED AS A RESULT OF CONSTRUCTION WILL BE REMOVED AND DISPOSED OF BY THE CONTRACTOR. THIS WORK SHALL BE CONSIDERED INCIDENTAL TO CONSTRUCTION.
31. SHORING COSTS WILL BE CONSIDERED INCIDENTAL TO THE TRENCH AND BACKFILL COSTS.
32. THE CONTRACTOR WILL BE RESPONSIBLE FOR SECURING NPDES PERMITS REQUIRED BY APPLICABLE CITY, STATE, AND FEDERAL REGULATIONS.
33. THE TERM "REMOVE" USED IN THIS PLAN SET INCLUDES THE DISPOSAL OF SAID MATERIAL IN ACCORDANCE WITH CITY OF ALBUQUERQUE SPECIFICATIONS, LATEST EDITION, THROUGH UPDATE 9.
34. THE CONTRACTOR SHALL BE RESPONSIBLE FOR PROVIDING AND MAINTAINING ALL CONSTRUCTION SIGNING UNTIL PROJECT HAS BEEN ACCEPTED BY THE CITY OF ALBUQUERQUE.
35. STATIONS OF STORM DRAIN INLETS ARE TO THE CENTER OF GRATE AT FLOWLINE.
36. ALL REINFORCING STEEL TO BE GRADE 60 UNLESS OTHERWISE NOTED ON PLANS.
37. ALL STORM DRAIN AND CONNECTOR PIPE WILL BE CLASS IV REINFORCED CONCRETE PIPE UNLESS OTHERWISE NOTED ON THE PLANS.
38. EXCESS EXCAVATION REQUIRED TO CONSTRUCT THE PROJECT THAT DOES NOT HAVE A CORRESPONDING BID ITEM (i.e. EXCAVATION OF SUBGRADE OR DIRT) SHALL BE REMOVED AND DISPOSED OF AT NO ADDITIONAL COST TO THE OWNER AND WILL BE CONSIDERED INCIDENTAL TO CONSTRUCTION.
39. EXCAVATION, TRENCHING AND SHORING ACTIVITIES MUST BE CARRIED-OUT IN ACCORDANCE WITH OSHA 29 CFR 1926.650, SUBPART P.
40. CONTRACTOR IS ADVISED TO VISIT THE PROJECT SITE PRIOR TO BIDDING AND FAMILIARIZE THEMSELVES WITH FIELD CONDITIONS INCLUDING THE LOCATION OF UTILITIES SHOWN ON THE PLANS AND OTHER UTILITIES/OBSTACLES CLEARLY VISIBLE IN THE FIELD.
41. NOT USED.
42. ALL DISTURBED GROUND AREAS SHALL BE REVEGETATED IN ACCORDANCE WITH CITY OF ALBUQUERQUE STANDARD SPECIFICATIONS FOR PUBLIC WORKS CONSTRUCTION, SECTION 1012 NATIVE GRASS SEEDING, AS REVISED THROUGH UPDATE 9.
43. IF A PAVEMENT DROP-OFF IS CREATED DURING CONSTRUCTION, THE CONTRACTOR SHALL INITIATE PROTECTIVE MEASURES TO PREVENT ABRUPT DROP-OFFS. THIS WORK SHALL BE CONSIDERED INCIDENTAL TO CONSTRUCTION.
44. THE CONTRACTOR SHALL COORDINATE WITH THE WATER AUTHORITY SEVEN (7) DAYS IN ADVANCE OF PERFORMING WORK THAT WILL AFFECT THE PUBLIC WATER OR SANITARY SEWER INFRASTRUCTURE. WORK REQUIRING SHUTOFF OF FACILITIES DESIGNATED AS MASTER PLAN FACILITIES MUST BE COORDINATED WITH THE WATER AUTHORITY 14 DAYS IN ADVANCE OF PERFORMING SUCH WORK. ONLY WATER AUTHORITY CREWS ARE AUTHORIZED TO OPERATE PUBLIC VALVES. SHUTOFF REQUESTS MUST BE MADE ONLINE AT <http://abcwua.org/content/view/full/463729/>.
45. IN THE CASE OF A CONFLICT BETWEEN CONDUIT OR EQUIPMENT PLACEMENT AND STORM DRAIN, CONTRACTOR SHALL INFORM THE CONSTRUCTION ENGINEER BEFORE PROCEEDING WITH ANY DEVIATIONS FROM PLANS.
46. CONTRACTOR SHALL BE RESPONSIBLE FOR LOCATING ALL STORM DRAIN CONFLICTS DURING CONSTRUCTION.
47. SHOULD ANY IMPACT OCCUR TO STORM DRAIN PIPE DURING CONSTRUCTION EFFORTS, THE CONTRACTOR SHALL BE RESPONSIBLE FOR CONTACTING THE CITY OF ALBUQUERQUE STORM DRAIN MAINTENANCE TO INSPECT THE IMPACTED PIPE.
48. REPAIRS TO IMPACTED PIPE REQUIRED BY THE CITY OF ALBUQUERQUE STORM DRAIN MANAGEMENT PERSONNEL SHALL BE THE FINANCIAL AND CONSTRUCTION RESPONSIBILITY OF THE CONTRACTOR.
49. RCP SHALL BE INSTALLED SO THAT THE JOINT GAP AT THE HOME POSITION SHALL CONFORM TO THE APPROVED MANUFACTURER'S RECOMMENDATIONS. MANUFACTURER'S RECOMMEND JOINT GAP TOLERANCES FOR EACH PIPE SIZE AND TYPE SHALL BE SUBMITTED TO THE ENGINEER FOR APPROVAL PRIOR TO PLACEMENT OF PIPE. RCP JOINT SHALL NOT BE GROUTED UNLESS DIRECTED BY THE ENGINEER AFTER APPROVAL.
50. THE CONTRACTOR MUST MAINTAIN CONTINUOUS ACCESS TO ALL BUSINESSES AND PRIVATE PROPERTY DURING THE COURSE OF CONSTRUCTION. THIS APPLIES TO BOTH VEHICLES AND PEDESTRIANS, INCLUDING ADA ACCESS (WHERE APPLICABLE). THIS WORK SHALL BE CONSIDERED INCIDENTAL TO CONSTRUCTION.

SURVEY NOTES:

1. BEARINGS ARE NEW MEXICO STATE PLAN GRID BEARINGS - CENTRAL ZONE (NAD 83).
2. VERTICAL DATUM IS BASED UPON ALBUQUERQUE CONTROL SURVEY MONUMENT "LSS"302, ELEVATION=5444.139' (NAVD 1988).
3. FIELD SURVEYS WERE PERFORMED DURING THE MONTH OF MAY, 2018.

CONTROL POINT #1
5/8" REBAR WITH CAP STAMPED "SURVEY-TEL CONTROL"
NORTHING = 1,479,905.55'
EASTING= 1,555,774.26'
ELEVATION= 5,473.37'

CONTROL POINT #2
PK NAIL WITH ALUMINUM DISK STAMPED "SURV-TEL CONTROL"
NORTHING = 1,479,681.45'
EASTING= 1,555,960.66'
ELEVATION= 5,475.23'

LEGEND

- NEW STORM MANHOLE

EXISTING STORM MANHOLE

NEW STORM SEWER

EXISTING STORM SEWER

PROPERTY BOUNDARY

EXISTING CURB & GUTTER

SAS

EXISTING SAS MANHOLE

EXISTING SAS

EXISTING WATER HYDRANT

EXISTING WATER VALVE

EXISTING WATER CAP

EX. WATER LINE (12" & SMALLER)

EX. WATER LINE (12" & LARGER)

G

EXISTING GAS LINE

SEC JOB # 117106-04

SMITH ENGINEERING

Smith Engineering Company

Solutions for Today... Vision for Tomorrow

2000 San Pedro Cir. NE #3 Building 4, Suite 200 Albuquerque, NM 87110-1103 (505) 894-0700 www.smithengineering.com

CITY OF ALBUQUERQUE
DEPARTMENT OF MUNICIPAL DEVELOPMENT
ENGINEERING DIVISION

TITLE: SOUTHERN & EUBANK STORM SEWER EXTENSION
GENERAL NOTES & LEGEND

Design Review Committee

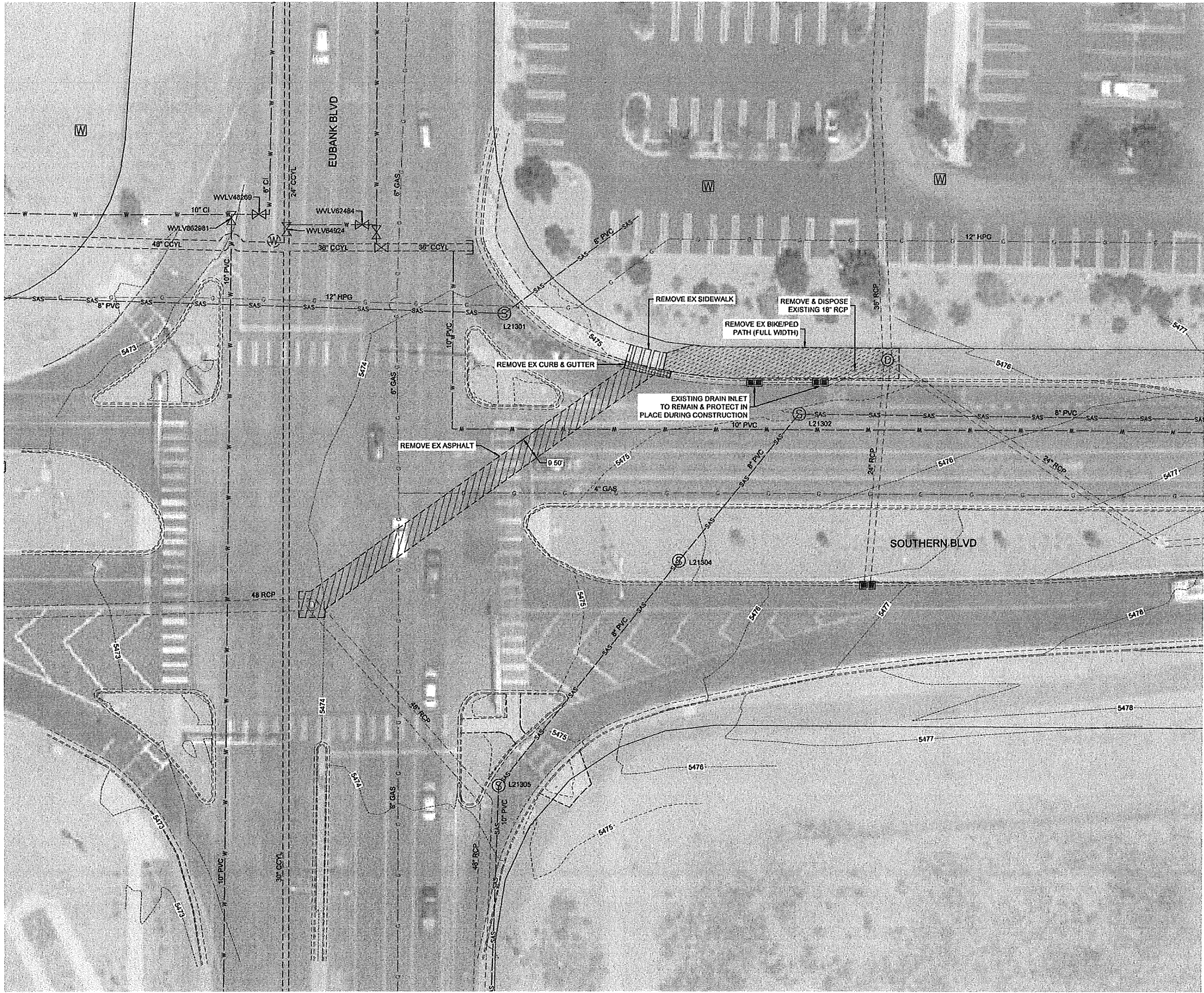
City Engineer Approval

Least Design Update

Sheets of

2 of 6

G:\SEC---PROJECTS\117106-04\CADD\PLANSET\117106-04_DEMO_PLAN.dwg



GENERAL NOTES:

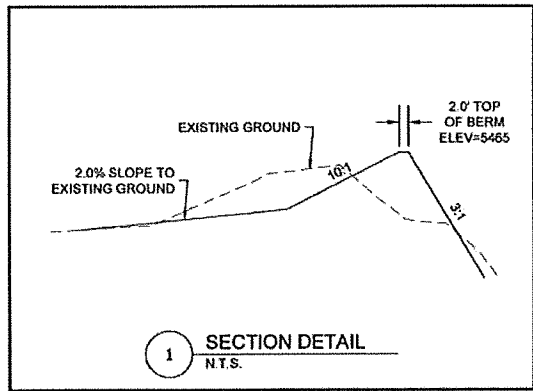
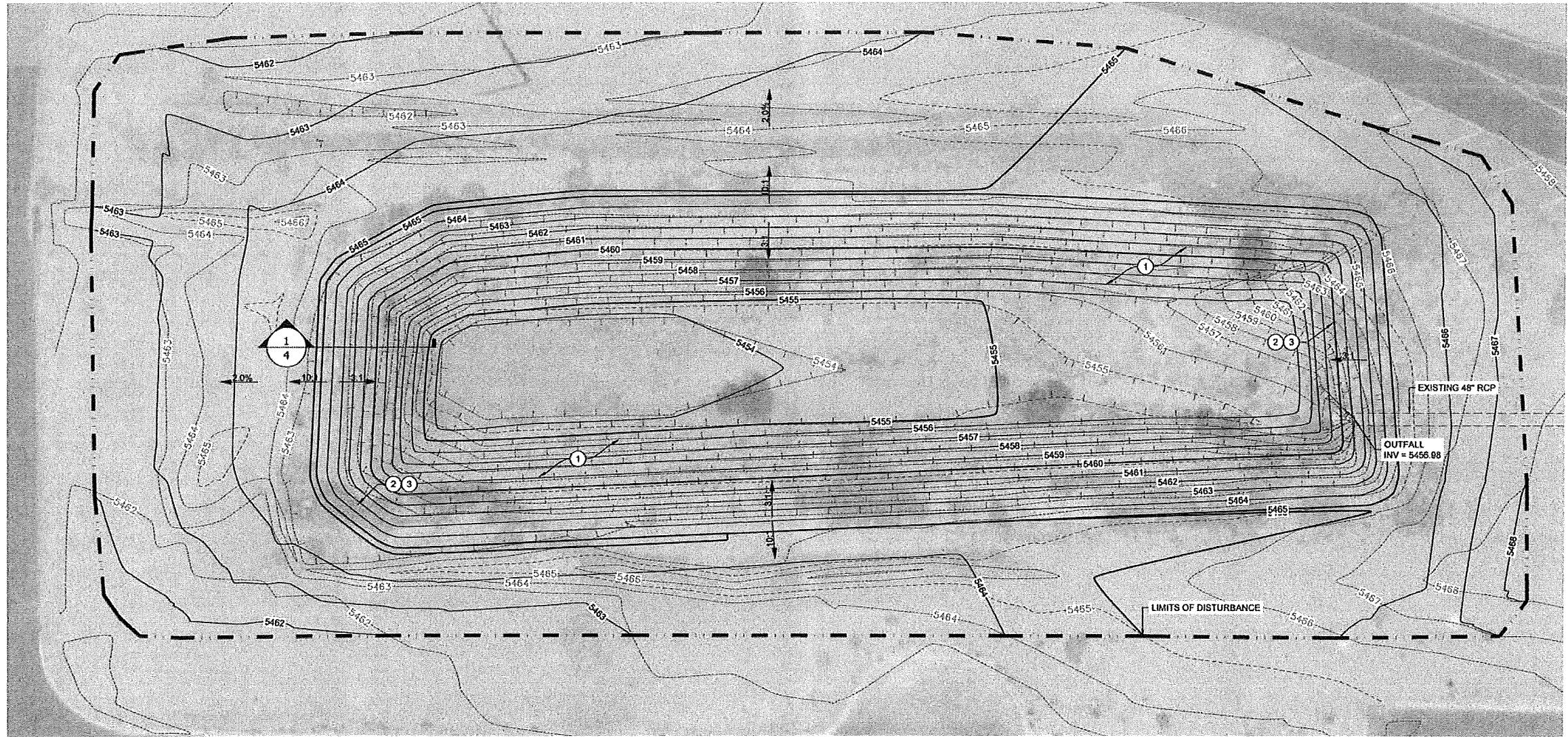
1. CONTRACTOR TO PROVIDE VEHICULAR AND PEDESTRIAN TRAFFIC CONTROL THROUGHOUT CONSTRUCTION DURATION
2. CONTRACTOR TO REPLACE IN KIND PAVEMENT MARKINGS REMOVED DURING CONSTRUCTION
3. CONTRACTOR TO COORDINATE WITH C.O.A., DMD, TRAFFIC OPERATIONS FOR IMPACTS TO THE TRAFFIC SIGNAL DETECTION LOOPS, IF ANY.

SEC JOB # 117106-04
Smith Engineering Company
Solutions for Today... Vision for Tomorrow
2201 San Pedro E., NE | Building A, Suite 250 | Albuquerque, NM 87110 | 505.854.0700 | smithengineering.com

CITY OF ALBUQUERQUE DEPARTMENT OF MUNICIPAL DEVELOPMENT ENGINEERING DIVISION	
TITLE: SOUTHERN & EUBANK STORM SEWER EXTENSION DEMOLITION PLAN	
Design Review Committee	City Engineer Approval
City Project No. 2930.90	Zone Map No. L-20
Drawing No.	Sheet 3 Of 6

ENGINEER'S SEAL		SURVEY INFORMATION		BENCH MARKS		AS BUILT INFORMATION	
		NO.	BY	DATE	CONTRACTOR	DATE	NO.
NO.	DATE	REMARKS	BY	DATE	DATE	DATE	DATE
		REVISIONS					
		DESIGN					
DESIGNED BY	JL	DATE	10/2018	DATE	10/2018	DATE	10/2018
DRAWN BY	RZ	DATE	10/2018	DATE	10/2018	DATE	10/2018
CHECKED BY	GN	DATE	10/2018	DATE	10/2018	DATE	10/2018

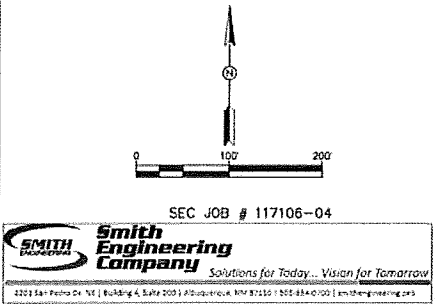
D:\SEC---PROJECTS\117106-04\CADD\PLANSET\117106-04_GRD_PLAN_01.dwg



POND WATER VOLUME				
CONTOUR ELEV	AREA (sq. ft.)	DEPT H (ft)	AVG END INC. VOL. (cu. ft.)	AVG END TOTAL VOL. (cu. ft.)
5,454.0	33073.3	N/A	N/A	0
5,455.0	7071.0	1	4935.36	4935.36
5,456.0	12084.8	1	9466.62	14402
5,457.0	14372.0	1	13211.89	27614
5,458.0	16439.0	1	15393.96	43008
5,459.0	18789.6	1	17601.25	60609
5,460.0	21212.5	1	19988.80	80598
5,461.0	23713.3	1	22451.30	103049
5,462.0	26288.6	1	24989.93	128039
5,463.0	28944.7	1	27606.00	155645
5,464.0	31682.5	1	30303.27	185948
5,465.0	34496.0	1	33079.27	219028
				8112.15 CY
				5.028 AC-FT

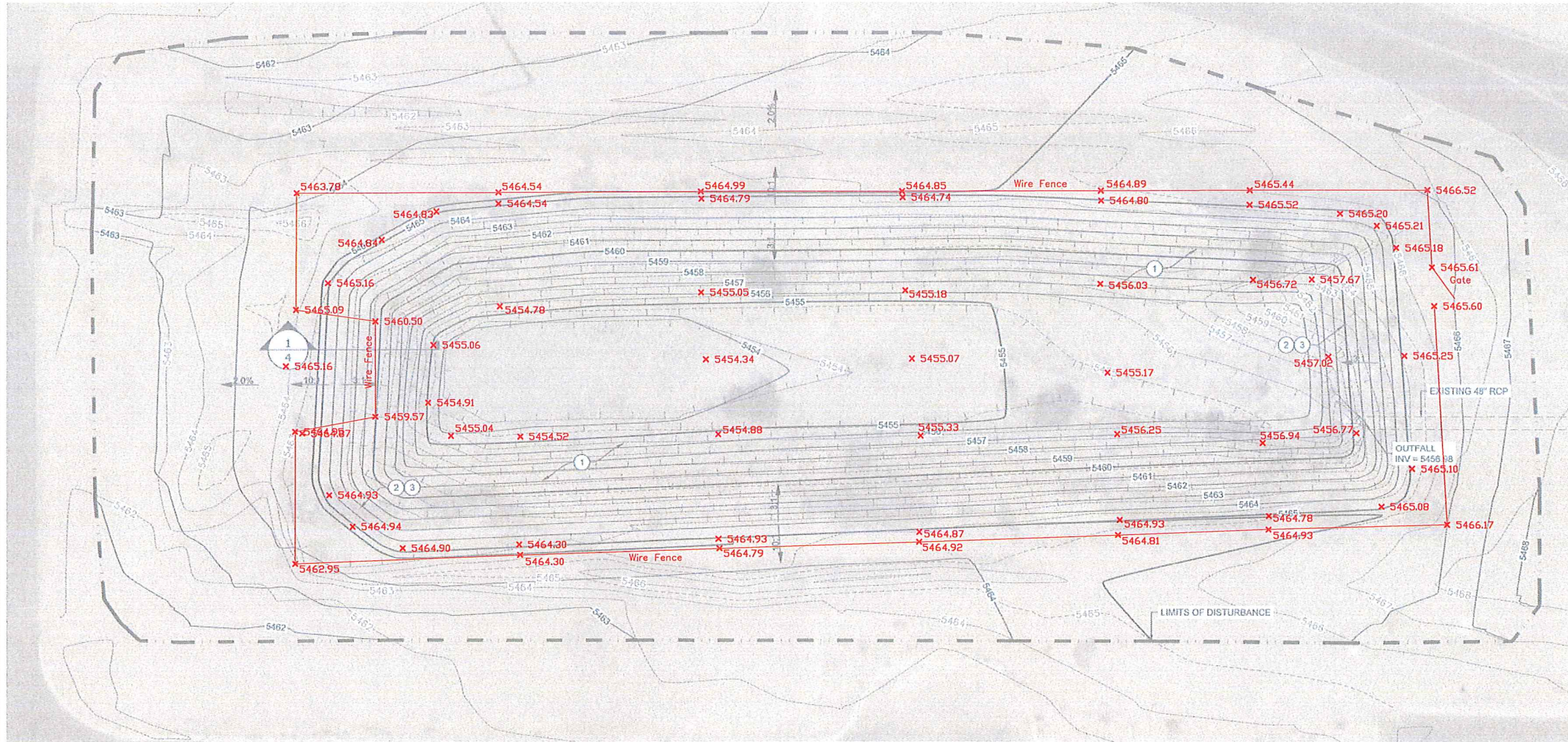
Volume
Base Surface 180227_XGRND_051718
Comparison Surface RETENTION POND
Cut Factor 1.000
Fill Factor 1.000
Cut volume (adjusted) 884.04 Cu. Yd.
Fill volume (adjusted) 870.41 Cu. Yd.
Net volume (adjusted) 13.63 Cu. Yd.<Cut>

- NOTES: (#)
- CLEARING AND GRUBBING OF EXISTING POND, PER STANDARD SPECIFICATION SECTION 201, COMPLETE
 - BORROW, HAULING AND COMPACTION OF SUITABLE FILL MATERIAL WHEN NOT OBTAINED FROM WITHIN LIMITS OF CONSTRUCTION PER STANDARD SPECIFICATIONS SECTION 205, COMPLETE
 - FURNISH AND INSTALL ANY COMBINATION OF CUT/FILL AND/OR GRADING, LESS THAN 2-FEET EXCAVATION, NO IMPORT OR EXPORT OF MATERIAL, AT 95% COMPACTION PER STANDARD SPECIFICATION SECTION 301, COMPLETE AND IN PLACE.



CITY OF ALBUQUERQUE DEPARTMENT OF MUNICIPAL DEVELOPMENT ENGINEERING DIVISION			
TITLE: SOUTHERN & EUBANK STORM SEWER EXTENSION GRADING PLAN			
Design Review Committee	City Engineer Approval	No. / Date / Yr.	
City Project No. 2930.90	Zone Map No. L-20	Drawing No.	Sheet 4 Of 6

D:\ASEC--PROJECTS\117106-04\NACAD\PLANCE\117106-04_ORD_PLAN_01.dwg



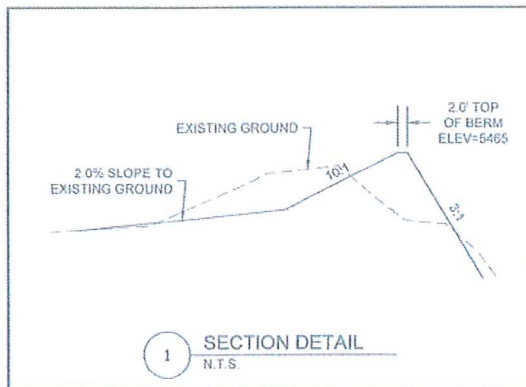
NOTES

1. CLEARING AND GRUBBING OF EXISTING POND, PER STANDARD SPECIFICATION SECTION 201, COMPLETE.
2. BORROW, HAULING AND COMPACTION OF SUITABLE FILL MATERIAL WHEN NOT OBTAINED FROM WITHIN LIMITS OF CONSTRUCTION PER STANDARD SPECIFICATIONS SECTION 205, COMPLETE.
3. FURNISH AND INSTALL ANY COMBINATION OF CUT/FILL AND/OR GRADING, LESS THAN 2-FEET EXCAVATION, NO IMPORT OR EXPORT OF MATERIAL, AT 95% COMPACTION PER STANDARD SPECIFICATION SECTION 301, COMPLETE AND IN PLACE.

Survey As-Built
5/10/2019

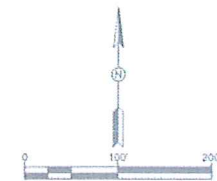


5/17/2019



POND WATER VOLUME				
CONTOUR ELEV	AREA (sq. ft.)	DEPT H (ft)	AVG END INC. VOL. (cu. ft.)	AVG END TOTAL VOL. (cu. ft.)
5454.0	33073.3	N/A	N/A	0
5455.0	7071.0	1	4935.36	4935.36
5456.0	12084.6	1	9466.62	14402
5457.0	14372.0	1	13211.89	27614
5458.0	16439.0	1	15393.96	43008
5459.0	18789.6	1	17501.25	60609
5460.0	21212.5	1	19988.60	80598
5461.0	23713.3	1	22451.30	103049
5462.0	26288.6	1	24959.93	128039
5463.0	28944.7	1	27606.00	155645
5464.0	31682.5	1	30303.27	185948
5465.0	34495.0	1	33079.27	219028
				8112.15 CV
				5.028 AC-FT

Volume
Base Surface 180227_XGRND_051718
Comparison Surface RETENTION POND
Cut Factor 1.000
Fill Factor 1.000
Cut volume (adjusted) 684.04 Cu. Yd.
Fill volume (adjusted) 870.41 Cu. Yd.
Net volume (adjusted) 13.63 Cu. Yd. <Cut>

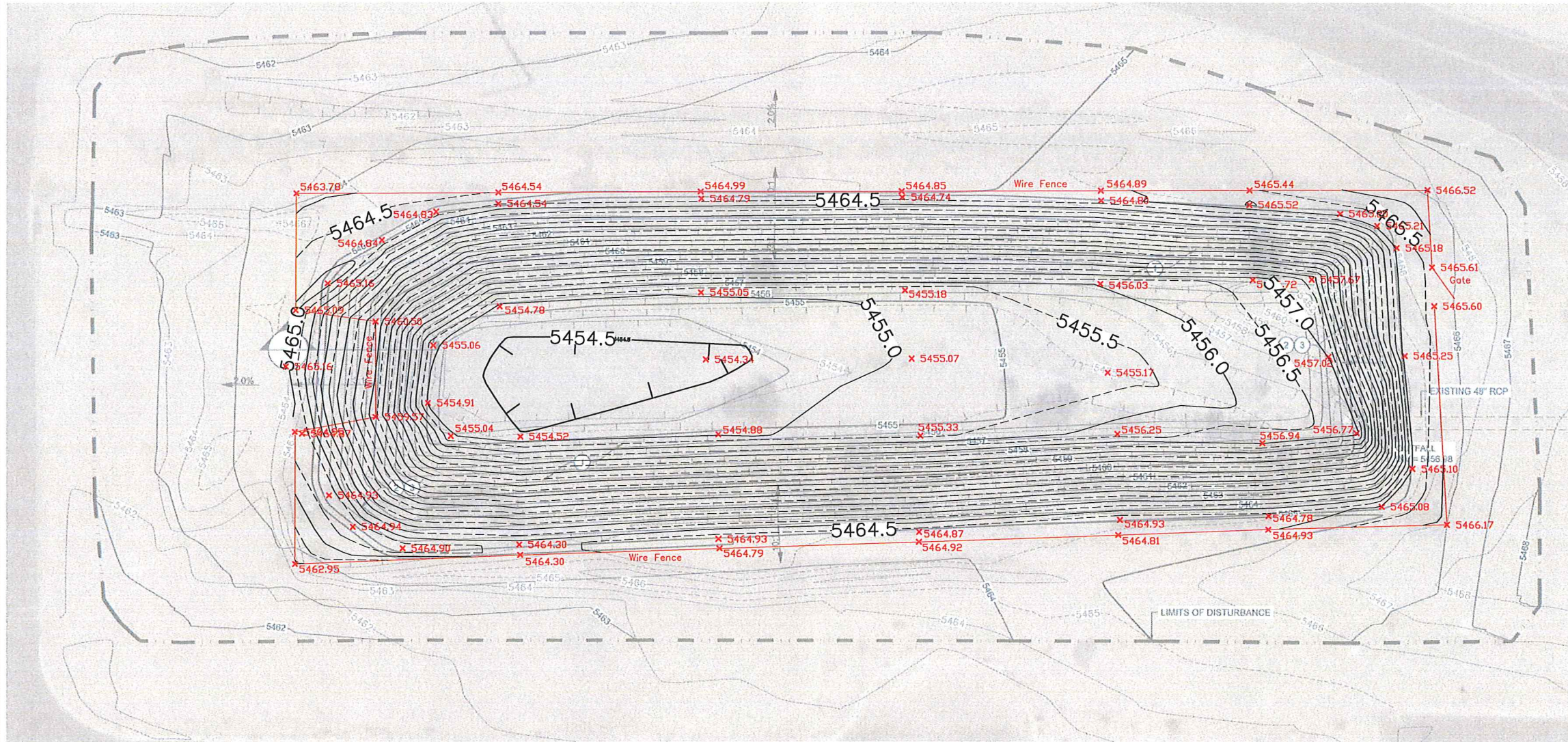


SEC JOB # 117106-04



CITY OF ALBUQUERQUE DEPARTMENT OF MUNICIPAL DEVELOPMENT ENGINEERING DIVISION			
TITLE: SOUTHERN & EUBANK STORM SEWER EXTENSION GRADING PLAN			
Design Review Committee	City Engineer Approval	File # Date of Rev.	Rev. # Date of Rev.
City Project No. 2930.90	Zone Map No. L-20	Drawing No.	Sheet 4A Of 6

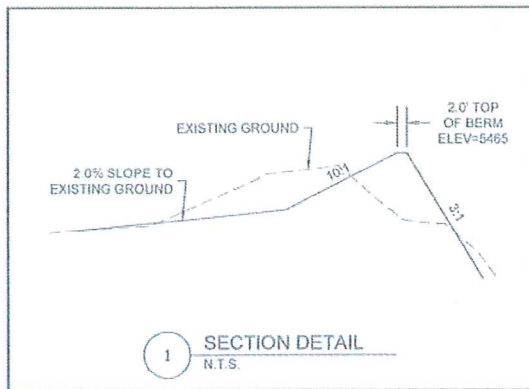
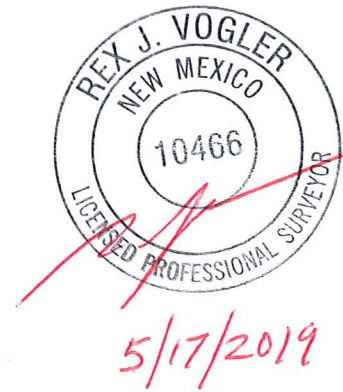
D:\AS\SEC-PROJECTS\117106-04\CADD\PLANSET\117106-04_GRD_PLAN_01.dwg



NOTES

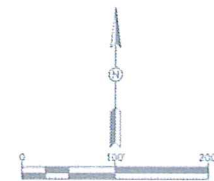
1. CLEARING AND GRUBBING OF EXISTING POND, PER STANDARD SPECIFICATION SECTION 201, COMPLETE.
2. BORROW, HAULING AND COMPACTION OF SUITABLE FILL MATERIAL WHEN NOT OBTAINED FROM WITHIN LIMITS OF CONSTRUCTION PER STANDARD SPECIFICATIONS SECTION 205, COMPLETE.
3. FURNISH AND INSTALL ANY COMBINATION OF CUT/FILL AND/OR GRADING, LESS THAN 2-FEET EXCAVATION, NO IMPORT OR EXPORT OF MATERIAL, AT 95% COMPACTION PER STANDARD SPECIFICATION SECTION 301, COMPLETE AND IN PLACE.

Survey As-Builts
5/10/2019

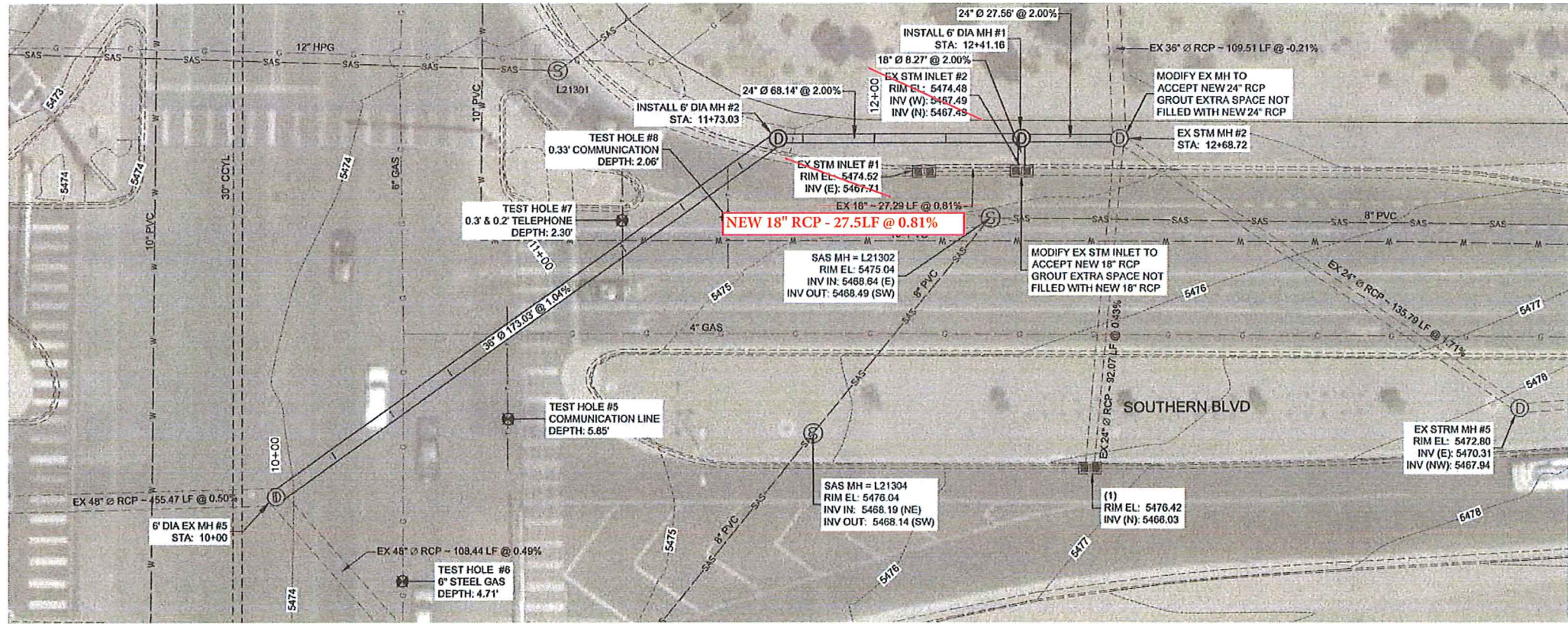


POND WATER VOLUME				
CONTOUR ELEV	AREA (sq. ft.)	DEPT H (ft)	AVG END INC. VOL. (cu. ft.)	AVG END TOTAL VOL. (cu. ft.)
5454.0	33073.3	N/A	N/A	0
5455.0	7071.0	1	4935.36	4935.36
5456.0	12684.6	1	9466.62	14402
5457.0	14372.0	1	13211.89	27614
5458.0	16439.0	1	15393.96	43008
5459.0	18789.6	1	17501.25	60609
5460.0	21212.5	1	19988.80	80598
5461.0	23713.3	1	22451.30	103049
5462.0	26288.6	1	24899.93	128039
5463.0	28944.7	1	27606.00	155645
5464.0	31692.5	1	30303.27	185948
5465.0	34466.0	1	33079.27	219028
				8112.15 CY
				5.028 AC-FT

Volume
Base Surface 180227_XGRND_051718
Comparison Surface RETENTION POND
Cut Factor 1.000
Fill Factor 1.000
Cut volume (adjusted) 884.04 Cu. Yd.
Fill volume (adjusted) 870.41 Cu. Yd.
Net volume (adjusted) 13.63 Cu. Yd. <Cut>



CITY OF ALBUQUERQUE DEPARTMENT OF MUNICIPAL DEVELOPMENT ENGINEERING DIVISION			
TITLE: SOUTHERN & EUBANK STORM SEWER EXTENSION GRADING PLAN			
Design Review Committee	City Engineer Approval	No. of Days of Rev.	
City Project No. 2930.90	Zone Map No. L-20	Drawing No.	Sheet 4A
			Of 6

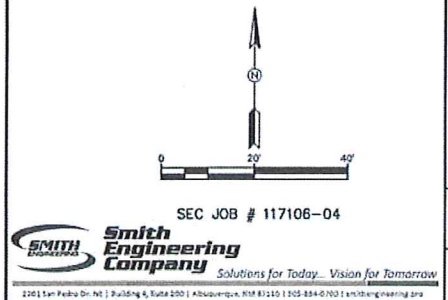
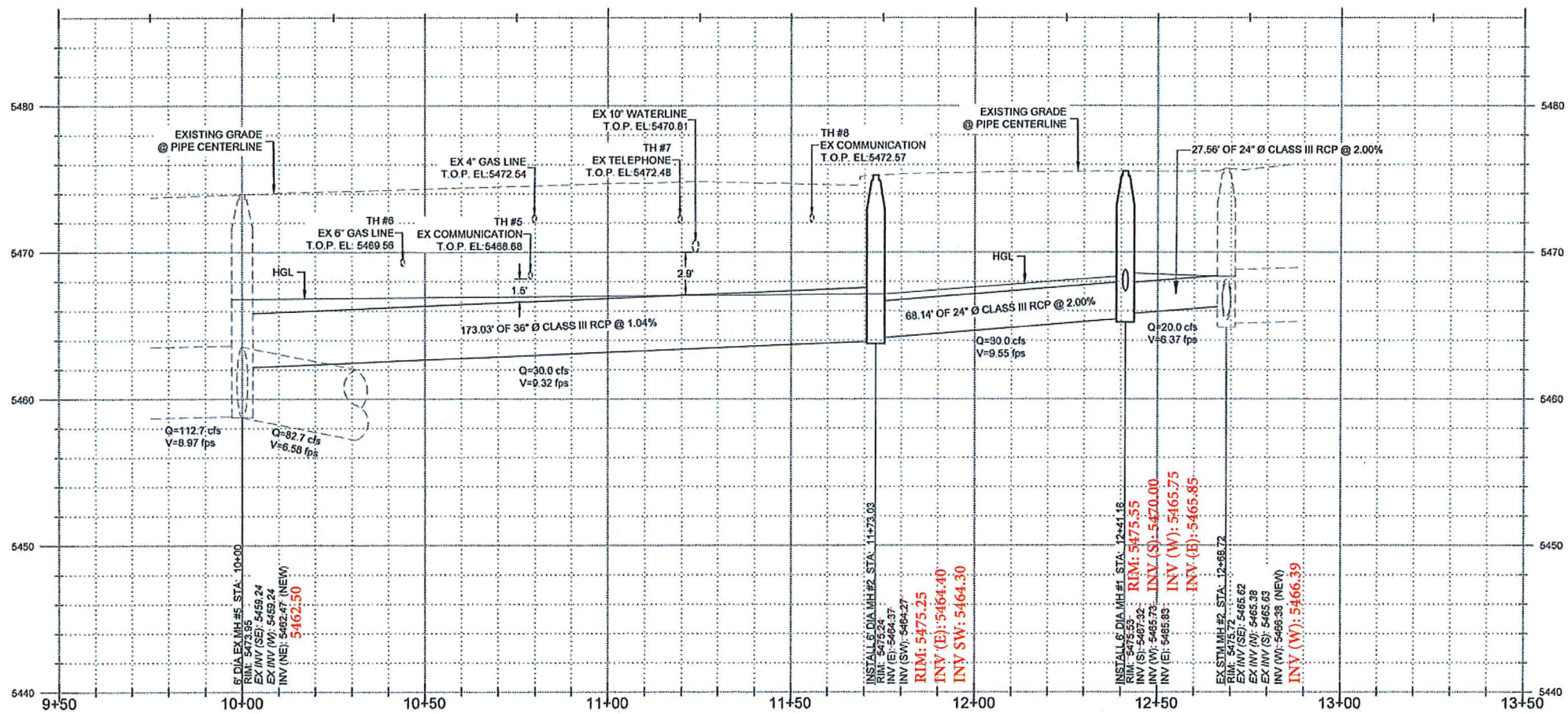


NEW STM INLET 1
SGL C INLET
RIM: 5474.52
INV (E): 5470.52

NEW STM INLET 2
SGL A INLET
RIM: 5474.48
INV (W): 5470.27
INV (N): 5470.17



TH #	DEPTH	DESCRIPTION
5	5.85	COMMUNICATION LINE
6	4.71	6\" STEEL GAS LINE
7	2.30	0.2 & 0.3 TELEPHONE LINE
8	2.06	0.33\" COMMUNICATION LINE



CITY OF ALBUQUERQUE DEPARTMENT OF MUNICIPAL DEVELOPMENT ENGINEERING DIVISION	
TITLE: SOUTHERN & EUBANK STORM SEWER EXTENSION STORM DRAIN PLAN AND PROFILE	
Design Review Committee	City Engineer Approval
City Project No. 2930.90	Zone Map No. L-20
Drawing No.	Sheet 5 of 6
REVISIONS	DESIGN
NO. DATE	BY
DESIGNED BY JL	DATE 10/2018
DRAWN BY RZ	DATE 10/2018
CHECKED BY GN	DATE 10/2018

