

• L E G E N D •

**MATERIALS**

CONCRETE  
RIP-RAP

**LINES**

SUBDIVISION BOUNDARY  
PROPERTY LINE (PLAN)  
PROPERTY LINE (SECTION)  
CENTERLINE  
EASEMENT LINE  
MATCH LINE  
SECTION CUT LINE

**EARTHWORK**

CONTOUR LINE  
SPOT ELEVATION  
PROJECT / PHASE BOUNDARY  
SWALE  
DIRECTION OF FLOW

**MISCELLANEOUS UTILITIES**

GAS LINE  
UNDERGROUND TELEPHONE  
UNDERGROUND ELECTRICAL  
STORM DRAIN  
STORM DRAIN MANHOLE  
STORM DRAIN INLET

**SANITARY SEWER**

SANITARY SEWER LINE  
SANITARY SEWER MANHOLE  
SAS SERVICE CONNECTIONS  
SAS CAP OR PLUG  
ENCASEMENT

**WATER**

WATER LINE  
WATER SERVICE CONNECTIONS  
GATE VALVE  
FIRE HYDRANT  
BUTTERFLY VALVE  
REDUCER  
WATER PRESSURE ZONE BOUNDARY

**WATER FITTINGS**

CAPS AND PLUGS  
ELBOW  
CROSS  
TEE

**MISCELLANEOUS**

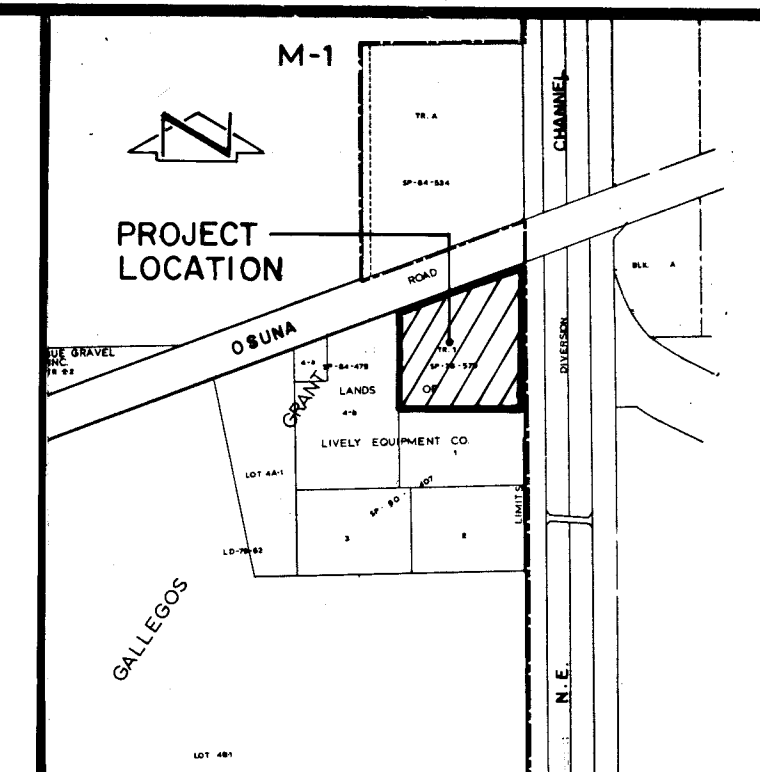
CHAINLINK FENCE  
FIELD FENCE  
COMMON YARD WALL  
RETAINING WALL  
POWER OR TELEPHONE POLE

CONSTRUCTION PLANS  
FOR  
**CHAPPELL ROAD N.E.**  
**WATERLINE AND SANITARY**  
**SEWER EXTENSION**

JULY, 1986

**INDEX OF DRAWINGS**

1. COVER SHEET, INDEX OF DRAWINGS, GENERAL NOTES & LEGEND
2. FINAL PLAT
3. WATERLINE & SANITARY SEWER PLAN & PROFILE



VICINITY MAP  
SCALE: 1" = 800'

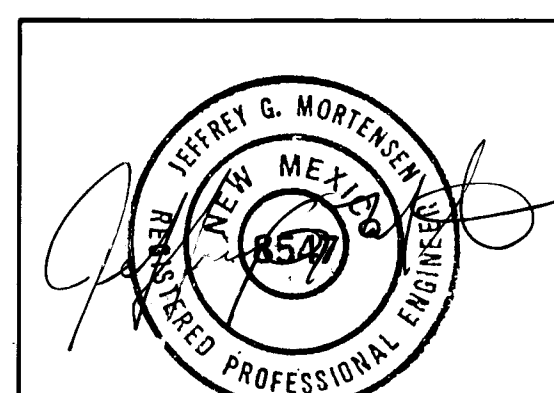
**GENERAL NOTES:**

1. ALL WORK DETAILED ON THESE PLANS TO BE PERFORMED UNDER CONTRACT SHALL, EXCEPT AS OTHERWISE STATED OR PROVIDED FOR HEREON, BE CONSTRUCTED IN ACCORDANCE WITH THE CITY OF ALBUQUERQUE INTERIM STANDARD SPECIFICATIONS - PUBLIC WORKS CONSTRUCTION - 1985.
2. TWO (2) WORKING DAYS PRIOR TO ANY EXCAVATION, CONTRACTOR MUST CONTACT LINE LOCATING SERVICE, 765-1234, FOR LOCATION OF EXISTING UTILITIES.
3. IF ANY UTILITY LINES, PIPELINES, OR UNDERGROUND UTILITY LINES ARE SHOWN ON THESE DRAWINGS, THEY ARE SHOWN IN AN APPROXIMATE MANNER ONLY, AND SUCH LINES MAY EXIST WHERE NONE ARE SHOWN. IF ANY SUCH EXISTING LINES ARE SHOWN, THE LOCATION IS BASED UPON INFORMATION PROVIDED BY THE OWNER OF SAID UTILITY, AND THE INFORMATION MAY BE INCOMPLETE, OR MAY BE OBSOLETE BY THE TIME CONSTRUCTION COMMENCES. THE ENGINEER HAS UNDERTAKEN NO FIELD VERIFICATION OF THE LOCATION, DEPTH, SIZE, OR TYPE OF EXISTING UTILITY LINES, PIPELINES, OR UNDERGROUND UTILITY LINES, MAKES NO REPRESENTATION PERTAINING THERETO, AND ASSUMES NO RESPONSIBILITY OR LIABILITY THEREFOR. THE CONTRACTOR SHALL INFORM ITSELF OF THE LOCATION OF ANY UTILITY LINE, PIPELINE, OR UNDERGROUND UTILITY LINE IN OR NEAR THE AREA OF THE WORK IN ADVANCE OF AND DURING EXCAVATION WORK. THE CONTRACTOR IS FULLY RESPONSIBLE FOR ANY AND ALL DAMAGE CAUSED BY ITS FAILURE TO LOCATE, IDENTIFY AND PRESERVE ANY AND ALL EXISTING UTILITIES, PIPELINES, AND UNDERGROUND UTILITY LINES IN PLANNING AND CONDUCTING EXCAVATION, THE CONTRACTOR SHALL COMPLY WITH STATE STATUTES, MUNICIPAL AND LOCAL ORDINANCES, RULES AND REGULATIONS, IF ANY, PERTAINING TO THE LOCATION OF THESE LINES AND FACILITIES.
4. SHOULD A CONFLICT EXIST BETWEEN THESE PLANS AND ACTUAL FIELD CONDITIONS, THE CONTRACTOR SHALL PROMPTLY NOTIFY THE ENGINEER IN WRITING SO THAT THE CONFLICT CAN BE RESOLVED WITH A MINIMUM AMOUNT OF DELAY FOR ALL PARTIES.
5. THE CONTRACTOR SHALL MAINTAIN ACCESS TO ADJACENT PROPERTIES DURING CONSTRUCTION.
6. ALL WORK ON THIS PROJECT SHALL BE PERFORMED IN ACCORDANCE WITH APPLICABLE FEDERAL, STATE AND LOCAL LAWS, RULES AND REGULATIONS CONCERNING CONSTRUCTION SAFETY AND HEALTH.
7. THE CONTRACTOR MUST SUBMIT A CONSTRUCTION SIGNING AND BARRICADING PLAN TO TRAFFIC ENGINEERING TO RECEIVE A BARRICADING PERMIT 48 HOURS PRIOR TO CONSTRUCTION.
8. ALL UTILITIES AND UTILITY SERVICE LINES SHALL BE INSTALLED PRIOR TO PAVING.
9. BACKFILL COMPACTION SHALL BE ACCORDING TO SPECIFIED STREET USE.
10. TACK COAT REQUIREMENTS SHALL BE DETERMINED BY THE CITY ENGINEER.
11. SIDEWALKS AND WHEELCHAIR RAMPS WITHIN THE CURB RETURNS SHALL BE CONSTRUCTED WHEREVER A NEW CURB RETURN IS CONSTRUCTED.
12. IF CURB IS DEPRESSED FOR A DRIVEPAD OR A HANDICAP RAMP, THE DRIVEPAD OR RAMP SHALL BE CONSTRUCTED PRIOR TO ACCEPTANCE OF THE CURB AND GUTTER.
13. ALL STORM DRAINAGE FACILITIES SHALL BE COMPLETED PRIOR TO FINAL ACCEPTANCE.

APPROVAL OF AS BUILT DRAWING  
DATE 4-12-87

26 29900187

REV	SHEETS	CITY ENGINEER	DATE	USER DEPARTMENT	DATE	USER DEPARTMENT	DATE
APPROVAL OF REVISIONS							



<b>APPROVED FOR CONSTRUCTION</b> 12/18/86 C.E.	
DWG. NO. <b>2990</b>	MAP NO. <b>E-16</b>
<b>SHEET 1 OF 3</b>	

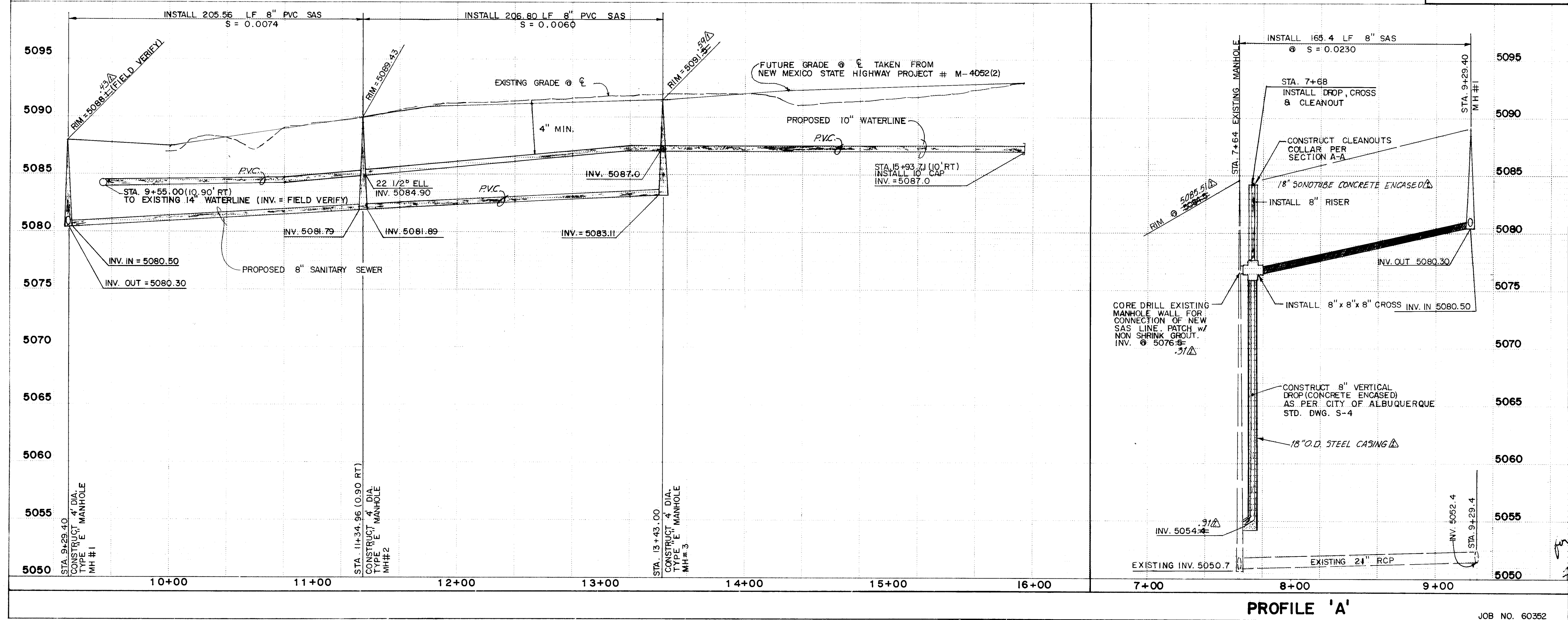
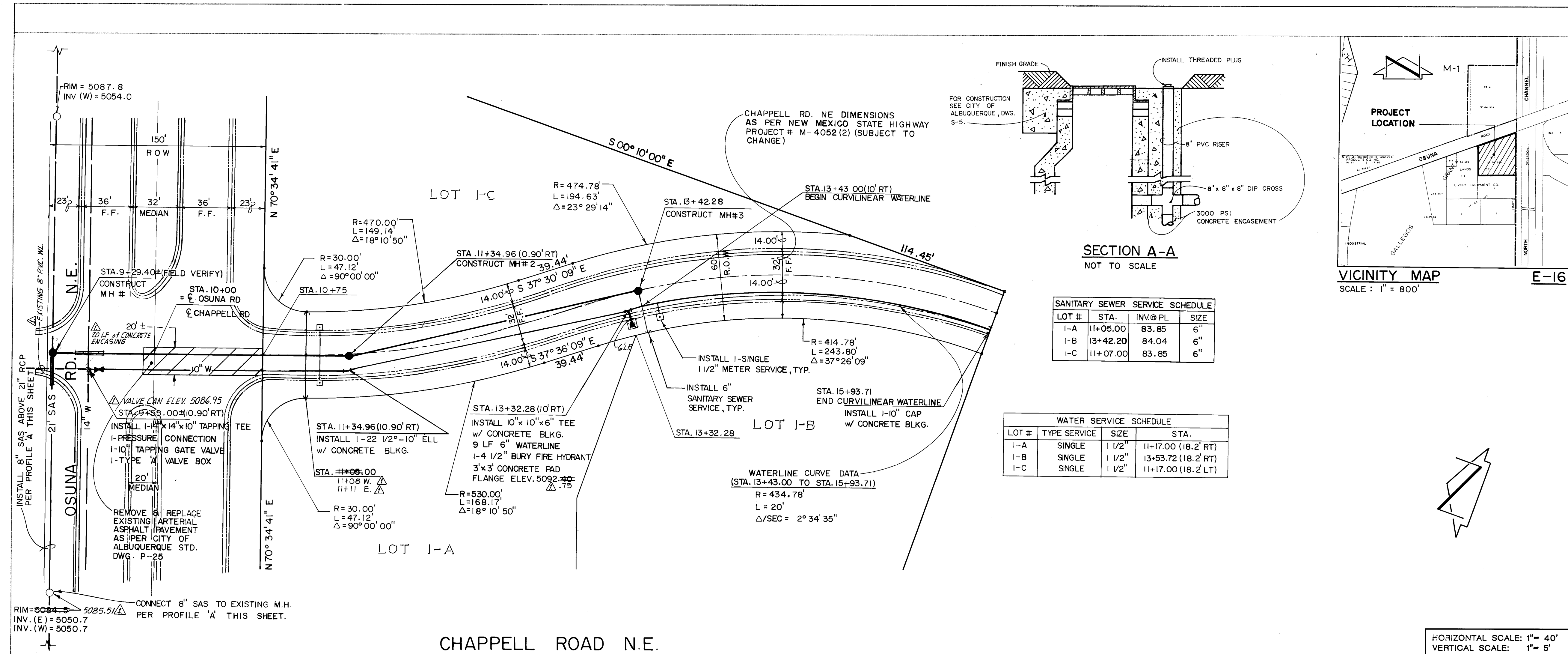
2990 SH. 2 OF 3



811 DALLAS, N.E. • ALBUQUERQUE • NEW MEXICO • 87110  
ENGINEERS

811 DALLAS, N. E. • ALBUQUERQUE • NEW MEXICO • 87110  
ENGINEERS  
JCB INC. 6035.





NOTES:

WATER

- WATER LINES SHALL BE PVC OR AS APPROVED BY THE CITY OF ALBUQUERQUE WATER RESOURCES DEPARTMENT.
- FIRE HYDRANTS SHALL BE CONSTRUCTED IN ACCORDANCE WITH CITY OF ALBUQUERQUE STANDARD DRAWING W-20
- METERED SERVICE LINES SHALL BE CONSTRUCTED IN ACCORDANCE WITH CITY OF ALBUQUERQUE STANDARD DRAWING W-11 AND W-19 AS SHOWN.
- WHERE SEWER AND WATER LINES CROSS, IF VERTICAL CLEARANCE DOES NOT EXCEED 1'-6", THE SEWER LINE SHALL BE PRESSURE PIPE FROM MANHOLE TO MANHOLE.
- IF ANY UTILITY LINES, PIPELINES, OR UNDERGROUND UTILITY LINES ARE SHOWN ON THESE DRAWINGS, THEY ARE SHOWN IN AN APPROXIMATE MANNER ONLY, AND SUCH LINES MAY EXIST WHERE NONE ARE SHOWN. IF ANY SUCH EXISTING LINES ARE SHOWN, THE LOCATION IS BASED UPON INFORMATION PROVIDED BY THE OWNER OF SAID UTILITY, AND THE INFORMATION MAY BE INCOMPLETE, OR MAY BE OBSOLETE BY THE TIME CONSTRUCTION COMMENCES. THE ENGINEER HAS UNDERTAKEN NO FIELD VERIFICATION OF THE LOCATION, DEPTH, SIZE, OR TYPE OF EXISTING UTILITY LINES, PIPELINES, OR UNDERGROUND UTILITY LINES. MAKES NO REPRESENTATION PERTAINING THERETO, AND ASSUMES NO RESPONSIBILITY OR LIABILITY THEREFOR. THE CONTRACTOR SHALL INFORM ITSELF OF THE LOCATION OF ANY UTILITY LINE, PIPELINE, OR UNDERGROUND UTILITY LINE IN OR NEAR THE AREA OF THE WORK IN ADVANCE OF AND DURING EXCAVATION WORK. THE CONTRACTOR IS FULLY RESPONSIBLE FOR ANY AND ALL DAMAGE CAUSED BY ITS FAILURE TO LOCATE, IDENTIFY AND PRESERVE ANY AND ALL EXISTING UTILITIES, PIPELINES, AND UNDERGROUND UTILITY LINES. IN PLANNING AND CONDUCTING EXCAVATION, THE CONTRACTOR SHALL COMPLY WITH STATE STATUTES, MUNICIPAL AND LOCAL ORDINANCES, RULES AND REGULATIONS, IF ANY, PERTAINING TO THE LOCATION OF THESE LINES AND FACILITIES.
- CONTRACTOR SHALL REMOVE AND REPLACE EXISTING ARTERIAL PAVING FOR CITY-WIDE PAVEMENT CUTS FOR ALL UTILITIES AS PER CITY OF ALBUQUERQUE STANDARD DRAWING P-25. PAVEMENT STRUCTURE SHALL INCLUDE 5/8" PLANT MIX SEAL COAT.

SANITARY SEWER

- ALL STATIONING IS BASED ON CENTERLINE OF ROW.
- SANITARY SEWER LINES SHALL BE PVC OR AS APPROVED BY THE CITY OF ALBUQUERQUE WATER UTILITIES DEPARTMENT.
- ALL STANDARD MANHOLES SHALL BE 4-FOOT DIAMETER MANHOLES AS PER CITY OF ALBUQUERQUE STANDARD DRAWING S-2 UNLESS OTHERWISE NOTED.
- SEWER SERVICE LATERALS SHALL BE CONSTRUCTED AS PER CITY OF ALBUQUERQUE STANDARD DRAWING S-9.
- MANHOLE STEPS SHALL BE APPROVED BY THE CITY OF ALBUQUERQUE WATER UTILITIES DEPARTMENT.

CITY OF ALBUQUERQUE  
MUNICIPAL DEVELOPMENT DEPARTMENT  
ENGINEERING DIVISION

TITLE: CHAPPELL ROAD N.E.  
WATER & SANITARY SEWER EXTENSION  
STA. 9+29.40 TO STA. 15+93.71

APPROVALS	ENGINEER	DATE	APPROVALS	ENGINEER	DATE
City Engineer	[Signature]	9/12/84	Liquid Waste	[Signature]	9/18/84
A.C.E. - Design	[Signature]	9/11/84	Traffic	[Signature]	9/18/84
A.C.E. - Hydrology	[Signature]	9/11/84	Water	[Signature]	9/18/84

DRAWING NO. 2990 MAP NO. E-16 SHEET 3 OF 3