

- L E G E N D -

MATERIALS

CONCRETE
RIP-RAP

LINES

RIGHT-OF-WAY
PROPERTY LINE (PLAN)
RIGHT-OF-WAY (SECTION)
CENTERLINE
EASEMENT LINE
MATCH LINE
SECTION CUT LINE

EARTHWORK

CONTOUR LINE
SPOT ELEVATION
PROJECT/ PHASE BOUNDARY
SWALE
DIRECTION OF FLOW

MISCELLANEOUS UTILITIES

GAS LINE
UNDERGROUND TELEPHONE
UNDERGROUND ELECTRICAL
STORM DRAIN
STORM DRAIN MANHOLE
STORM DRAIN INLET

SANITARY SEWER

SANITARY SEWER LINE
SANITARY SEWER MANHOLE
SAS SERVICE CONNECTIONS
SAS CAP OR PLUG
ENCASEMENT

WATER

WATER LINE WITH CAP
WATER SERVICE CONNECTIONS
GATE VALVE
FIRE HYDRANT
BUTTERFLY VALVE
REDUCER
WATER PRESSURE ZONE BOUNDARY

WATER FITTINGS

CAPS AND PLUGS
ELBOW
CROSS
TEE

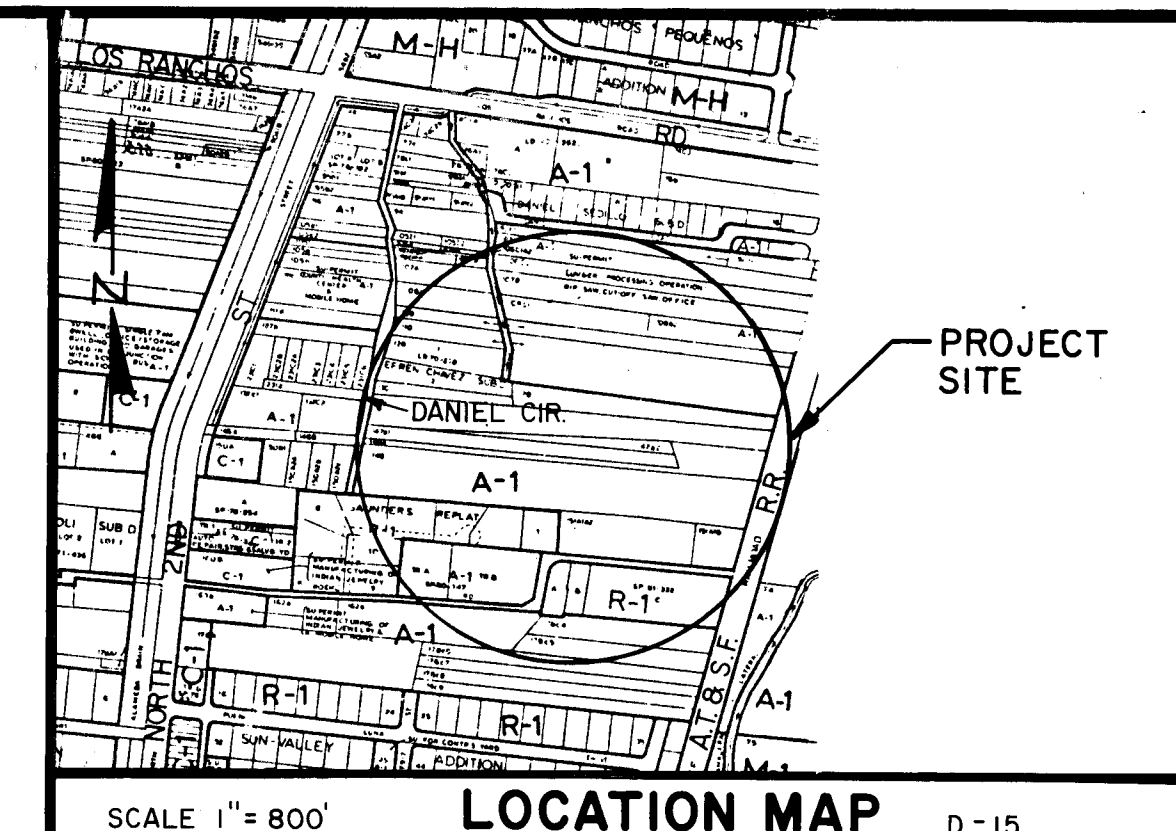
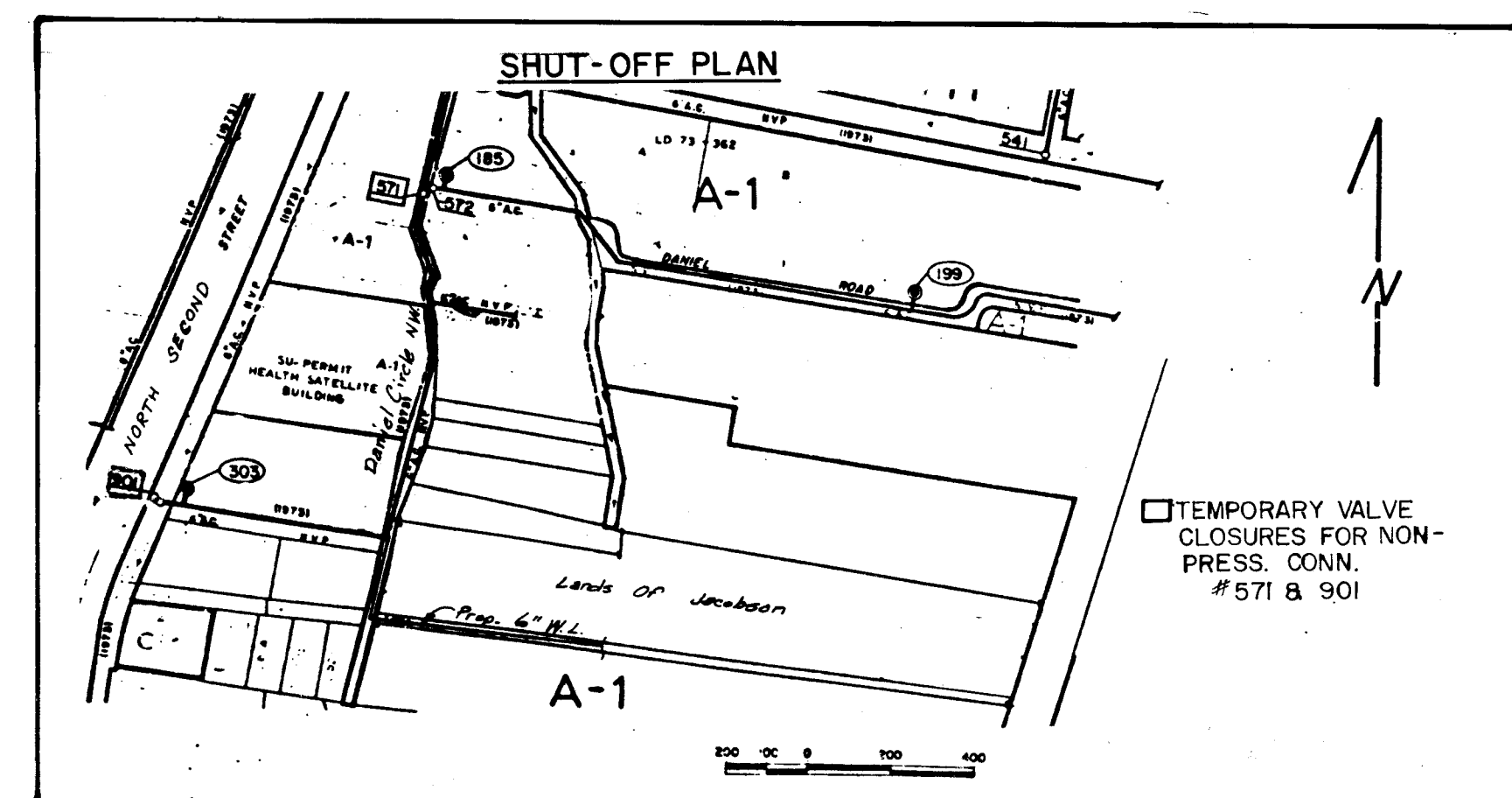
MISCELLANEOUS

EDGE OF ASPHALT
FIELD FENCE/CHAINLINK FENCE
COMMON YARD WALL/BLOCK WALL
RETAINING WALL
POWER OR TELEPHONE POLE
TREE

DANIEL CIRCLE NW WATERLINE EXTENSION TO LANDS OF JACOBSON

INDEX OF DRAWINGS

SHEET NO.	TITLE
1.	TITLE, LEGEND, VICINITY MAP, GENERAL NOTES, INDEX OF DRAWINGS
2.	PLAT (FOR INFORMATION ONLY)
3.	WATERLINE - PLAN & PROFILE

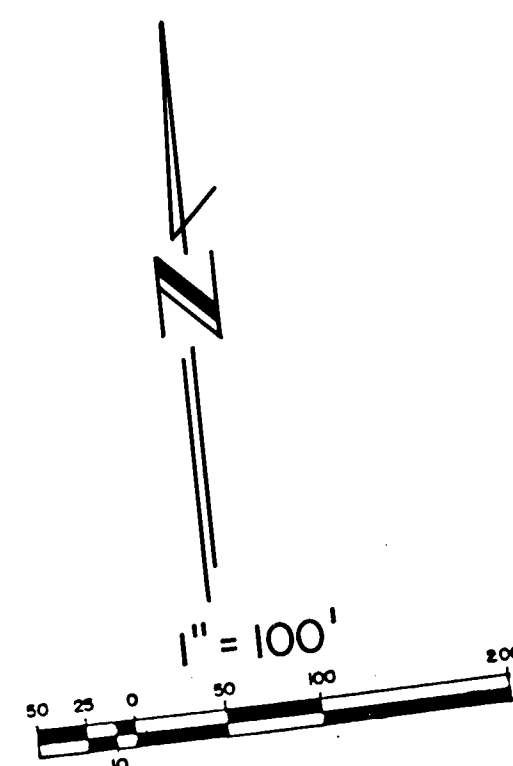
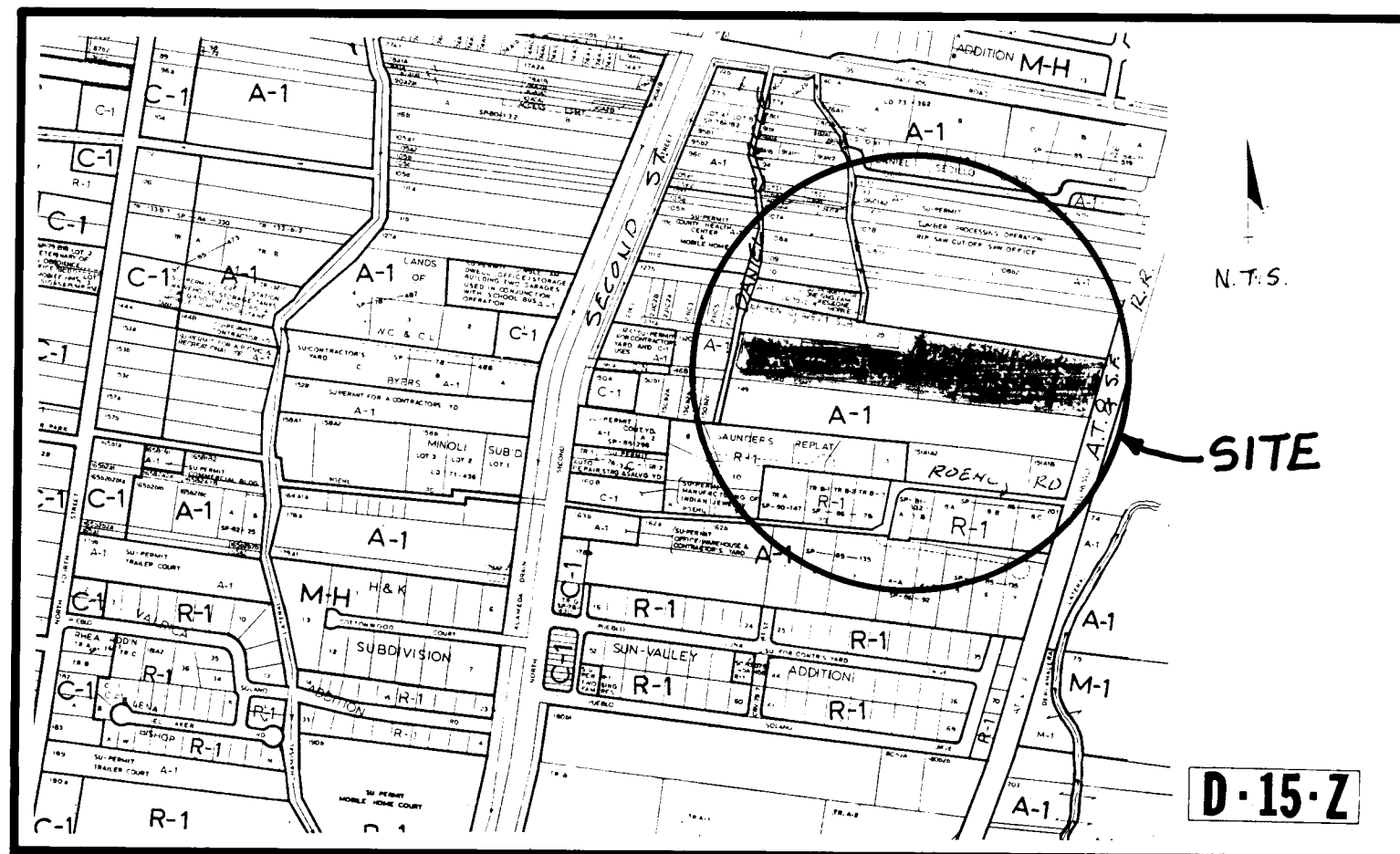


- GENERAL NOTES:
- ALL WORK DETAILED ON THESE PLANS TO BE PERFORMED UNDER CONTRACT SHALL, EXCEPT AS OTHERWISE STATED OR PROVIDED FOR HEREON, BE CONSTRUCTED IN ACCORDANCE WITH THE CITY OF ALBUQUERQUE STANDARD SPECIFICATIONS - PUBLIC WORKS CONSTRUCTION - 1986 EDITION.
 - TWO (2) WORKING DAYS PRIOR TO ANY EXCAVATION, CONTRACTOR MUST CONTACT LINE LOCATING SERVICE, 765-1234, FOR LOCATION OF EXISTING UTILITIES.
 - IF ANY UTILITY LINES, PIPELINES, OR UNDERGROUND UTILITY LINES ARE SHOWN ON THESE DRAWINGS, THEY ARE SHOWN IN AN APPROXIMATE MANNER ONLY, AND SUCH LINES MAY EXIST WHERE NONE ARE SHOWN. IF ANY SUCH EXISTING LINES ARE SHOWN, THE LOCATION IS BASED UPON INFORMATION PROVIDED BY THE OWNER OF SAID UTILITY, AND THE INFORMATION MAY BE INCOMPLETE, OR MAY BE OBSOLETE BY THE TIME CONSTRUCTION COMMENCES. THE ENGINEER HAS UNDERTAKEN NO FIELD VERIFICATION OF THE LOCATION, DEPTH, SIZE, OR TYPE OF EXISTING UTILITY LINES, PIPELINES, OR UNDERGROUND UTILITY LINES, MAKES NO REPRESENTATION PERTAINING THERETO, AND ASSUMES NO RESPONSIBILITY OR LIABILITY THEREFOR. THE CONTRACTOR SHALL INFORM ITSELF OF THE LOCATION OF ANY UTILITY LINE, PIPELINE, OR UNDERGROUND UTILITY LINE IN OR NEAR THE AREA OF THE WORK IN ADVANCE OF AND DURING EXCAVATION WORK. THE CONTRACTOR IS FULLY RESPONSIBLE FOR ANY AND ALL DAMAGE CAUSED BY ITS FAILURE TO LOCATE, IDENTIFY AND PRESERVE ANY AND ALL EXISTING UTILITIES, PIPELINES, AND UNDERGROUND UTILITY LINES. IN PLANNING AND CONDUCTING EXCAVATION, THE CONTRACTOR SHALL COMPLY WITH STATE STATUTES, MUNICIPAL AND LOCAL ORDINANCES, RULES AND REGULATIONS, IF ANY, PERTAINING TO THE LOCATION OF THESE LINES AND FACILITIES.
 - SHOULD A CONFLICT EXIST BETWEEN THESE PLANS AND ACTUAL FIELD CONDITIONS, THE CONTRACTOR SHALL PROMPTLY NOTIFY THE ENGINEER IN WRITING SO THAT THE CONFLICT CAN BE RESOLVED WITH A MINIMUM AMOUNT OF DELAY FOR ALL PARTIES.
 - THE CONTRACTOR SHALL MAINTAIN ACCESS TO ADJACENT PROPERTIES DURING CONSTRUCTION.
 - ALL WORK ON THIS PROJECT SHALL BE PERFORMED IN ACCORDANCE WITH APPLICABLE FEDERAL, STATE AND LOCAL LAWS, RULES AND REGULATIONS CONCERNING CONSTRUCTION SAFETY AND HEALTH.
 - THE CONTRACTOR MUST SUBMIT A CONSTRUCTION SCHEDULING AND BARRICADING PLAN TO TRAFFIC ENGINEERING TO RECEIVE A BARRICADING PERMIT 48 HOURS PRIOR TO CONSTRUCTION.
 - ALL UTILITIES AND UTILITY SERVICE LINES SHALL BE INSTALLED PRIOR TO PAVING.
 - BACKFILL COMPACTION SHALL BE ACCORDING TO SPECIFIED STREET USE.
 - TACK COAT REQUIREMENTS SHALL BE DETERMINED BY THE CITY ENGINEER.
 - SIDEWALKS AND WHEELCHAIR RAMPS WITHIN THE CURB RETURNS SHALL BE CONSTRUCTED WHEREVER A NEW CURB RETURN IS CONSTRUCTED.
 - IF CURB IS DEPRESSED FOR A DRIVEPAD OR A HANDICAP RAMP, THE DRIVEPAD OR RAMP SHALL BE CONSTRUCTED PRIOR TO ACCEPTANCE OF THE CURB AND GUTTER.
 - ALL STORM DRAINAGE FACILITIES SHALL BE COMPLETED PRIOR TO FINAL ACCEPTANCE.

APPROVAL OF AS BUILT DRAWINGS
CHIEF CONSTRUCTION ENGINEER
Samuel B. Smith
DATE 8-3-89

REV.	SHEETS	CITY ENGINEER	DATE	USER	DEPT.	DATE	USER	DEPT.	DATE
APPROVAL OF REVISIONS									

1 2 3 4 5 6 7 8 9 10 11 12 26 3234 0189	CITY OF ALBUQUERQUE DRAWING NO. 3234	APPROVED FOR CONSTRUCTION CITY ENGINEER <i>Samuel B. Smith</i> 5-25-89 SHEET 1 OF 3
--	---	---



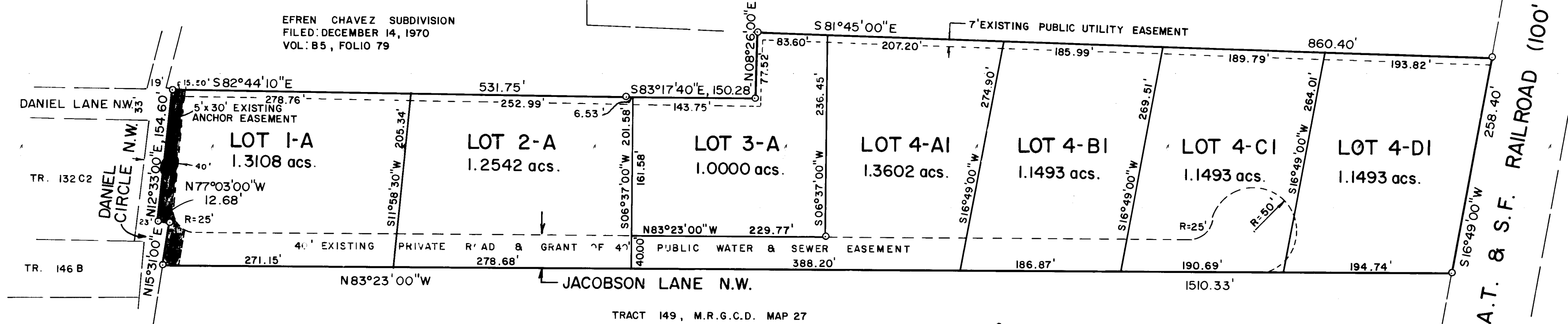
A PLAT OF **-8854590**
 LOTS 1-A, 2-A, 3-A, 4-A1, 4-B1, 4-C1 & 4-D1
 LANDS OF JACOBSON
 BEING A REPLAT OF LOTS 1, 2, 3, 4-A, 4-B, 4-C, & 4-D
 WITHIN SECTION 21, T.11N., R.3E., N.M.P.M.
 BERNALILLO COUNTY, NEW MEXICO
 MAY, 1988

LEGAL-DESCRIPTION AND FREE CONSENT

The undersigned owner(s) of the land hereon shown do hereby consent to the Replat of the land hereon shown:

Lots numbered One (1), Two (2) and Three (3) of the Summary Plat of LANDS OF JACOBSON, being Tracts 129, 131a, 147a1, 147a2, and 148a, M.R.G.C.D. Map No. 27, within Section 21, Township 11 North, Range 3 East, N.M.P.M., Bernalillo County, New Mexico, as the same is shown and designated on said Summary Plat thereof, filed in the office of the County Clerk of Bernalillo County, New Mexico on October 21, 1982, in Book C-20, folio 71, TOGETHER WITH Lots numbered Four-A (4-A), Four-B (4-B), Four-C (4-C), and Four-D (4-D) of Replat of Lot 4, LANDS OF JACOBSON, Section 21, Township 11 North, Range 3 East, N.M.P.M., as the same is shown and designated on said Replat thereof filed in the office of the County Clerk of Bernalillo County, New Mexico on July 15, 1986, in Volume C-31, folio 03; and is with the free consent and in accordance with the desires of the undersigned owner(s) and proprietor(s) thereof, and hereby grants the private access and public utility easement as shown hereon.

Additional right-of-way as shown hereon to be dedicated to the Governmental Authority having jurisdiction over Daniel Circle



DISCLOSURE STATEMENT

The purpose of this plat is to grant a 40' public water and sewer easement to the City of Albuquerque.

NOTES:

- 1) Basis of Bearings = Lands of Jacobson, file date: July 15, 1986, Vol. C-31, folio 03.
- 2) No field work performed.
- 3) Plat shows all easements of record.
- 4) The private access easement is for the benefit and use by and for the owners of the lots shown hereon and said Lot owners are to maintain the easement.
- 5) Lot 3-A is hereby granted access per this plat.

City of Albuquerque Water and Sanitary Sewer Service is currently not available to these properties.

Owner(s) Steve A. Jacobson Date 5/27/88

ACKNOWLEDGEMENT

STATE OF NEW MEXICO)
) ss.
 COUNTY OF BERNALILLO)

The foregoing instrument was acknowledged before me this _____ day of _____, 1988.

BY: _____

My Commission Expires: _____ Notary Public

SURVEYOR'S CERTIFICATION

I, Franklin E. Wilson, a registered Professional Land Surveyor under the laws of the State of New Mexico, do hereby certify that this plat was prepared by me or under my supervision, meets the minimum requirements of monumentation and surveys of the Albuquerque Subdivision Ordinance, and that it is true and correct to the best of my knowledge and belief.

Franklin E. Wilson, N.M.L.S. No. 6445 Date _____
 SOUTHWEST SURVEYING CO., INC. 333 Lomas Blvd, N.E., Albuquerque, New Mexico
 87102 (505) 247-4444

ACKNOWLEDGEMENT

STATE OF NEW MEXICO)
) ss.
 COUNTY OF _____)

The foregoing instrument was acknowledged before me this _____ day of _____, 1988, by Franklin E. Wilson.

My Commission Expires: _____ Notary Public

Owner(s) Elliot Hernandez, Doris Hernandez Date 5/26/88

ACKNOWLEDGEMENT

STATE OF NEW MEXICO)
) ss.
 COUNTY OF BERNALILLO)

The foregoing instrument was acknowledged before me this _____ day of _____, 1988.

BY: _____

My Commission Expires: _____ Notary Public

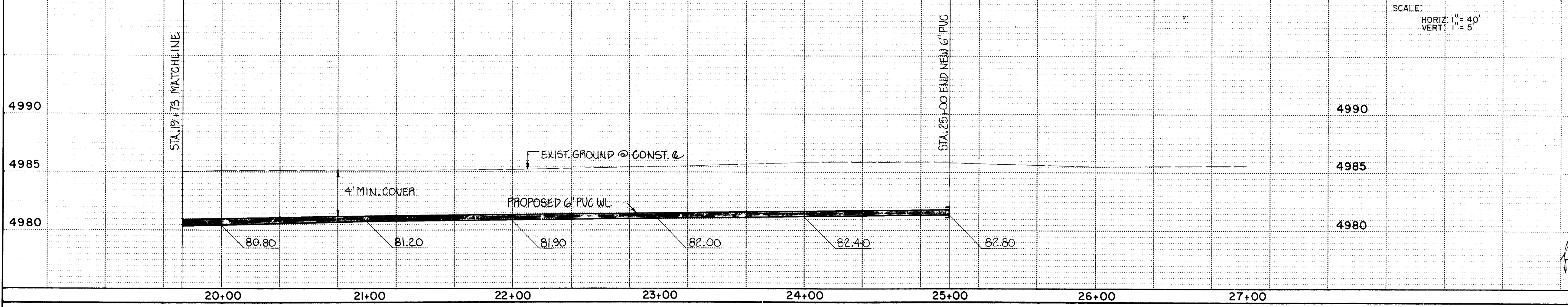
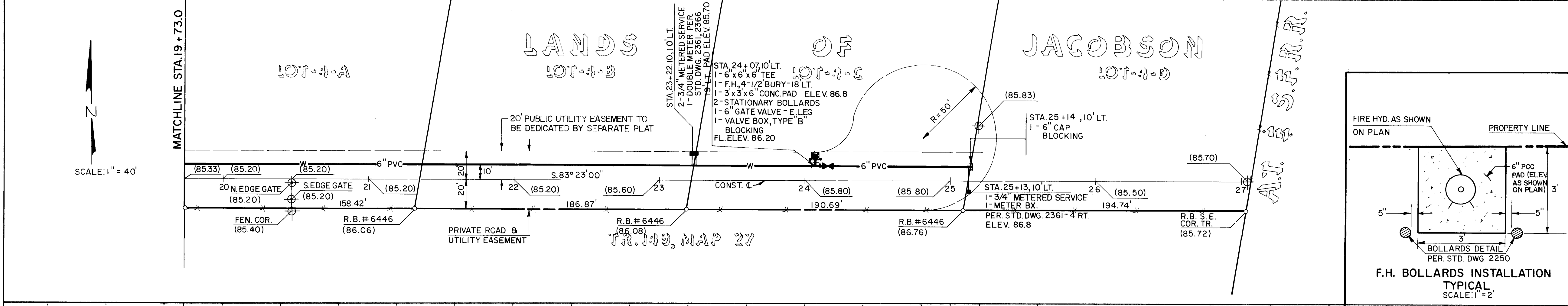
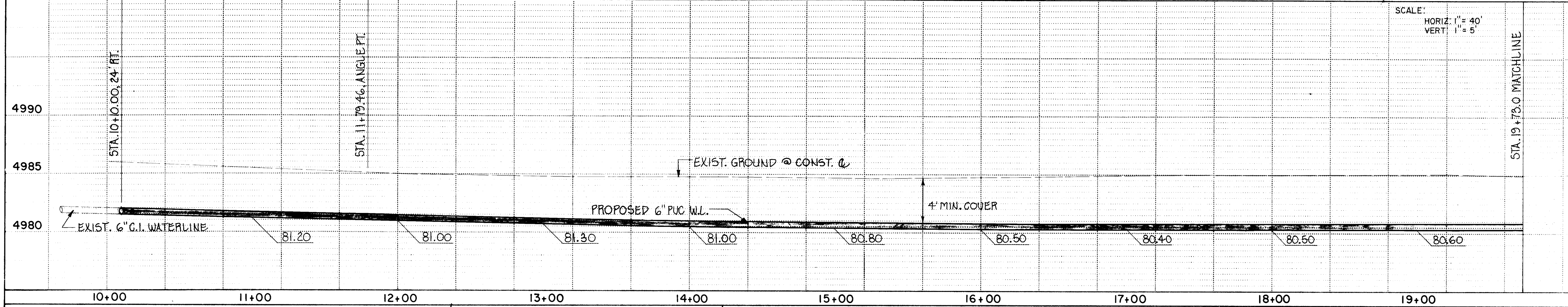
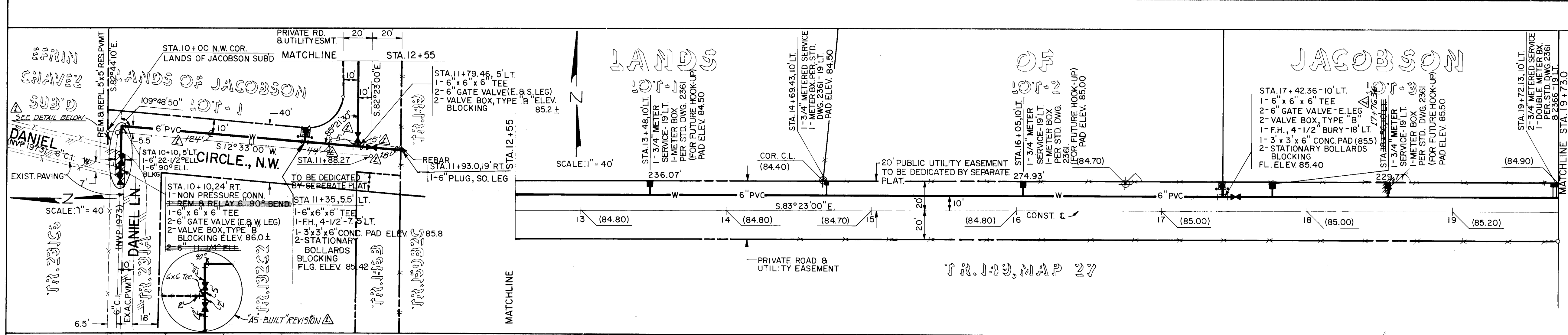
CITY/COUNTY APPROVALS: SP-88-180

Public Management	Date
<u>Neil Alt</u>	<u>06/07/88</u>
City Engineer	Date
<u>John J. Argueta</u>	<u>6/14/88</u>
City Engineer	Date
<u>John J. Argueta</u>	<u>06/07/88</u>
A.M.A.F.C.A.	Date
<u>John J. Argueta</u>	<u>6/14/88</u>
Public and Recreation	Date
<u>John J. Argueta</u>	<u>6-14-88</u>
City Planning Director	Date
<u>John J. Argueta</u>	<u>6-17-88</u>

DRB 88-329

26 3234

26 32340289



- WATERLINE NOTES
1. ALL STATIONING IS BASED ON CONSTRUCTION CENTERLINE.
 2. THE CONTRACTOR SHALL FURNISH ELECTRONIC MARKER DISKS (EMD) ON ALL SEWER AND WATER SERVICE STUBS, CAPS AND PLUGS.
 3. WATER MAIN SHALL BE PVC C-900 PIPE OR AS APPROVED BY THE CITY OF ALBUQUERQUE WATER RESOURCES DIVISION.
 4. WATER LINE SHALL HAVE A MINIMUM COVER OF 4'0".
 5. ALL PIPE SHALL BE FURNISHED WITH CLASS III BEDDING UNLESS OTHERWISE NOTED. ALL TRENCH BACKFILL SHALL BE COMPACTED TO A MINIMUM OF 90% OF OPTIMUM, AS PER ASTM D-1557.
 6. WHERE SEWER AND WATER LINES CROSS, IS VERTICAL CLEARANCE DOES NOT EXCEED 1'6", THE SEWER LINE MUST BE C900, OR SHALL BE CONCRETE ENCASED 10' EACH SIDE OF WATER LINE.

SURVEY INFORMATION		FIELD NOTES	
NO.	BY	DATE	
DS-54	D. KRAMER	5/13/87	
ENGINEER'S SEAL		BENCH MARKS	
		AS BUILT INFORMATION	
		MICRO-FILM INFORMATION	
		REVISIONS	
NO.	DATE	REMARKS	DATE
1	8/1/89	Revised from as-built information	7-15-88
2	8/1/89	Revised from as-built information	7-15-88
3	8/1/89	Revised from as-built information	7-15-88
4	8/1/89	Revised from as-built information	7-15-88
5	8/1/89	Revised from as-built information	7-15-88
6	8/1/89	Revised from as-built information	7-15-88
7	8/1/89	Revised from as-built information	7-15-88
8	8/1/89	Revised from as-built information	7-15-88
9	8/1/89	Revised from as-built information	7-15-88
10	8/1/89	Revised from as-built information	7-15-88
11	8/1/89	Revised from as-built information	7-15-88
12	8/1/89	Revised from as-built information	7-15-88
13	8/1/89	Revised from as-built information	7-15-88
14	8/1/89	Revised from as-built information	7-15-88
15	8/1/89	Revised from as-built information	7-15-88
16	8/1/89	Revised from as-built information	7-15-88
17	8/1/89	Revised from as-built information	7-15-88
18	8/1/89	Revised from as-built information	7-15-88
19	8/1/89	Revised from as-built information	7-15-88
20	8/1/89	Revised from as-built information	7-15-88
21	8/1/89	Revised from as-built information	7-15-88
22	8/1/89	Revised from as-built information	7-15-88
23	8/1/89	Revised from as-built information	7-15-88
24	8/1/89	Revised from as-built information	7-15-88
25	8/1/89	Revised from as-built information	7-15-88
26	8/1/89	Revised from as-built information	7-15-88
27	8/1/89	Revised from as-built information	7-15-88
28	8/1/89	Revised from as-built information	7-15-88
29	8/1/89	Revised from as-built information	7-15-88
30	8/1/89	Revised from as-built information	7-15-88
31	8/1/89	Revised from as-built information	7-15-88
32	8/1/89	Revised from as-built information	7-15-88
33	8/1/89	Revised from as-built information	7-15-88
34	8/1/89	Revised from as-built information	7-15-88
35	8/1/89	Revised from as-built information	7-15-88
36	8/1/89	Revised from as-built information	7-15-88
37	8/1/89	Revised from as-built information	7-15-88
38	8/1/89	Revised from as-built information	7-15-88
39	8/1/89	Revised from as-built information	7-15-88
40	8/1/89	Revised from as-built information	7-15-88
41	8/1/89	Revised from as-built information	7-15-88
42	8/1/89	Revised from as-built information	7-15-88
43	8/1/89	Revised from as-built information	7-15-88
44	8/1/89	Revised from as-built information	7-15-88
45	8/1/89	Revised from as-built information	7-15-88
46	8/1/89	Revised from as-built information	7-15-88
47	8/1/89	Revised from as-built information	7-15-88
48	8/1/89	Revised from as-built information	7-15-88
49	8/1/89	Revised from as-built information	7-15-88
50	8/1/89	Revised from as-built information	7-15-88
51	8/1/89	Revised from as-built information	7-15-88
52	8/1/89	Revised from as-built information	7-15-88
53	8/1/89	Revised from as-built information	7-15-88
54	8/1/89	Revised from as-built information	7-15-88
55	8/1/89	Revised from as-built information	7-15-88
56	8/1/89	Revised from as-built information	7-15-88
57	8/1/89	Revised from as-built information	7-15-88
58	8/1/89	Revised from as-built information	7-15-88
59	8/1/89	Revised from as-built information	7-15-88
60	8/1/89	Revised from as-built information	7-15-88
61	8/1/89	Revised from as-built information	7-15-88
62	8/1/89	Revised from as-built information	7-15-88
63	8/1/89	Revised from as-built information	7-15-88
64	8/1/89	Revised from as-built information	7-15-88
65	8/1/89	Revised from as-built information	7-15-88
66	8/1/89	Revised from as-built information	7-15-88
67	8/1/89	Revised from as-built information	7-15-88
68	8/1/89	Revised from as-built information	7-15-88
69	8/1/89	Revised from as-built information	7-15-88
70	8/1/89	Revised from as-built information	7-15-88
71	8/1/89	Revised from as-built information	7-15-88
72	8/1/89	Revised from as-built information	7-15-88
73	8/1/89	Revised from as-built information	7-15-88
74	8/1/89	Revised from as-built information	7-15-88
75	8/1/89	Revised from as-built information	7-15-88
76	8/1/89	Revised from as-built information	7-15-88
77	8/1/89	Revised from as-built information	7-15-88
78	8/1/89	Revised from as-built information	7-15-88
79	8/1/89	Revised from as-built information	7-15-88
80	8/1/89	Revised from as-built information	7-15-88
81	8/1/89	Revised from as-built information	7-15-88
82	8/1/89	Revised from as-built information	7-15-88
83	8/1/89	Revised from as-built information	7-15-88
84	8/1/89	Revised from as-built information	7-15-88
85	8/1/89	Revised from as-built information	7-15-88
86	8/1/89	Revised from as-built information	7-15-88
87	8/1/89	Revised from as-built information	7-15-88
88	8/1/89	Revised from as-built information	7-15-88
89	8/1/89	Revised from as-built information	7-15-88
90	8/1/89	Revised from as-built information	7-15-88
91	8/1/89	Revised from as-built information	7-15-88
92	8/1/89	Revised from as-built information	7-15-88
93	8/1/89	Revised from as-built information	7-15-88
94	8/1/89	Revised from as-built information	7-15-88
95	8/1/89	Revised from as-built information	7-15-88
96	8/1/89	Revised from as-built information	7-15-88
97	8/1/89	Revised from as-built information	7-15-88
98	8/1/89	Revised from as-built information	7-15-88
99	8/1/89	Revised from as-built information	7-15-88
100	8/1/89	Revised from as-built information	7-15-88

CITY OF ALBUQUERQUE
MUNICIPAL DEVELOPMENT DEPARTMENT
ENGINEERING DIVISION

TITLE: DANIEL CIRCLE, N.W. - WATERLINE EXTENSION TO LANDS OF JACOBSON
PLAN & PROFILE

APPROVALS	ENGINEER	DATE	APPROVALS	ENGINEER	DATE
City Engineer	[Signature]	7/15/88	Liquid Waste	[Signature]	7-15-88
A.C.E. - Design	[Signature]	7-15-88	Traffic	[Signature]	7-15-88
A.C.E. - Hydrology	[Signature]	7-15-88	Water	[Signature]	7-15-88

DRAWING NO. 3234 MAP NO. D-15 SHEET 3 OF 3