

CITY OF ALBUQUERQUE
NEW MEXICO



TOYS "R" US WATERLINE EXTENSION
&
FIRE HYDRANT LEG

A. GENERAL

- CONTRACTOR NOTE:** THESE DRAWINGS REFLECT INFORMATION ON UTILITIES GATHERED BY (SITE INSPECTION, DISCUSSIONS WITH MUNICIPAL OFFICIALS AND PREVIOUS CONSTRUCTION DRAWINGS). IT IS POSSIBLE THAT THE EXACT LOCATION OF LINES AND UTILITY CONNECTION POINTS IN THE IMMEDIATE VICINITY OF THE PROPOSED SITE MAY BE SLIGHTLY DIFFERENT FROM THE LOCATION SHOWN ON THIS DRAWING. PRIOR TO CONSTRUCTION, THE CONTRACTOR SHALL EXCAVATE AND VERIFY THE HORIZONTAL AND VERTICAL LOCATIONS OF ALL OBSTRUCTIONS. SHOULD A CONFLICT EXIST, THE CONTRACTOR SHALL NOTIFY THE ENGINEER SO THAT THE CONFLICT CAN BE RESOLVED WITH A MINIMUM AMOUNT OF DELAY.
- UTILITY SPOT REQUESTS:** TWO WORKING DAYS PRIOR TO ANY EXCAVATION, CONTRACTOR MUST CONTACT LINE LOCATING SERVICE, 785-1234, FOR LOCATION OF EXISTING UTILITIES. CONTRACTOR SHALL COORDINATE ALL UTILITY WORK INCLUDING CUT OFF OF EXISTING UTILITIES FOR NEW CONNECTIONS (FIRE PROTECTION, DOMESTIC WATER, SEWER, STORM DRAIN, GAS PIPING, ETC.) WITH ENGINEER, OWNER, AND LOCAL UTILITY REPRESENTATIVES.
- SPECIFICATIONS:** ALL WATER AND SEWER UTILITY WORK DETAILED ON THESE PLANS, EXCEPT AS OTHERWISE STATED OR PROVIDED HEREON, SHALL BE CONSTRUCTED IN ACCORDANCE WITH THE CITY OF ALBUQUERQUE STANDARD SPECIFICATIONS FOR PUBLIC WORKS CONSTRUCTION - 1986 EDITION.
- PAVEMENT CUTS:** ALL PAVEMENT CUTS SHALL BE RECONSTRUCTED IN ACCORDANCE WITH CITY OF ALBUQUERQUE STD. DWG. 2465. ALL UTILITIES AND UTILITY SERVICE LINES SHALL BE INSTALLED PRIOR TO PAVING.
- OWNERSHIP OF DOCUMENTS:** THIS DOCUMENT, AND THE IDEAS AND DESIGNS INCORPORATED HEREIN, AS AN INSTRUMENT OF PROFESSIONAL SERVICE, IS THE PROPERTY OF EASTERLING & ASSOCIATES, INC. AND IS NOT TO BE USED, IN WHOLE OR IN PART, FOR ANY OTHER PROJECT WITHOUT THE WRITTEN AUTHORIZATION OF EASTERLING & ASSOCIATES, INC.
- CONSTRUCTION SAFETY:** THESE DRAWINGS DO NOT INCLUDE NECESSARY COMPONENTS FOR CONSTRUCTION SAFETY WHICH SHALL REMAIN THE CONTRACTOR'S RESPONSIBILITY.
- CONSTRUCTION PHASE:** THE CONTRACTOR SHALL EXERCISE REASONABLE CARE DURING CONSTRUCTION TO PREVENT THE MOVEMENT OF SEDIMENT FROM THE SITE INTO THE STREET. LOOSE SOIL STOCKPILES IN THE STREET DURING UTILITY CONNECTION ACTIVITIES SHALL BE PROTECTED FROM BEING CARRIED DOWNSTREAM BY FLOWING WATER IN THE STREET.
- WATER SHUTOFFS:** CONTRACTOR SHALL COORDINATE WITH WATER SYSTEMS DIVISION A MINIMUM OF THREE (3) WORKING DAYS PRIOR TO IMPLEMENTING THE PROPOSED WATER VALVE SHUTOFF PLAN.

B. WATER SHUTOFF PLAN - LINE A

REFER TO CITY OF ALBUQUERQUE WATER DISTRIBUTION SYSTEM SECTIONAL MAP J-19 FOR VALVE LOCATIONS AND NUMBER DESIGNATIONS. CONTRACTOR SHALL COORDINATE VALVE SHUTOFF WITH THE WATER SYSTEMS DIVISION MANAGER AT LEAST TWO (2) WORKING DAYS IN ADVANCE OF ANY WORK THAT MAY AFFECT EXISTING PUBLIC WATERLINES.

- 6" FIRELINE - MAKE NON-PRESSURE CONNECTION TO EXISTING 6" C.I. WATERLINE IN INDIAN SCHOOL ROAD. CLOSE VALVE NO. 12. WINROCK THEATER ONLY AFFECTED USER (MEDICAL PLAZA WILL BE VACANT). MAXIMUM SERVICE OUTAGE NOT TO EXCEED TWO (2) HOURS.

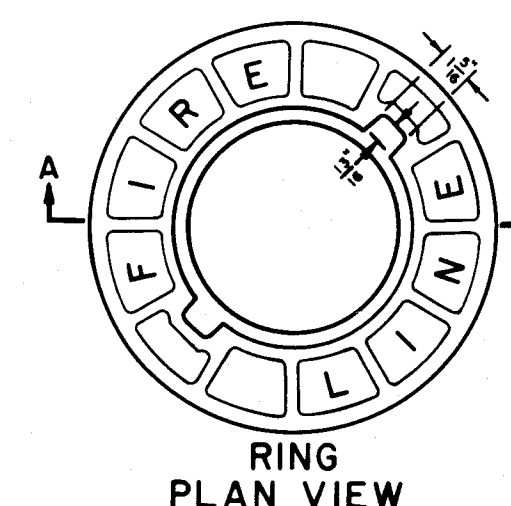
- 8" CONNECTION IN INDIAN SCHOOL ROAD - MAKE NON-PRESSURE CONNECTION TO EXISTING 6" C.I. WATERLINE IN INDIAN SCHOOL ROAD. CLOSE VALVE NO. 12. WINROCK THEATER ONLY AFFECTED USER. MAXIMUM SERVICE OUTAGE NOT TO EXCEED TWO (2) HOURS.
- 8" CONNECTION IN PENNSYLVANIA AVENUE - MAKE NON-PRESSURE CONNECTION TO EXISTING 12 3/4" STEEL WATERLINE IN PENNSYLVANIA AVENUE. CLOSE VALVES 41, 351, 191, 402, 551 AND 554. RESIDENTS AND BUSINESS FRONTING ON PENNSYLVANIA AVENUE WITH SERVICE OFF OF 12" LINE FROM VALVE NO. 41 TO 554 WILL BE AFFECTED. RESIDENCES EAST OF PENNSYLVANIA AVENUE WILL HAVE CONSTANT SERVICE DUE TO LOOPED LINES. MAXIMUM SERVICE OUTAGE NOT TO EXCEED TWO (2) HOURS.

C. TRAFFIC CONTROL PLAN

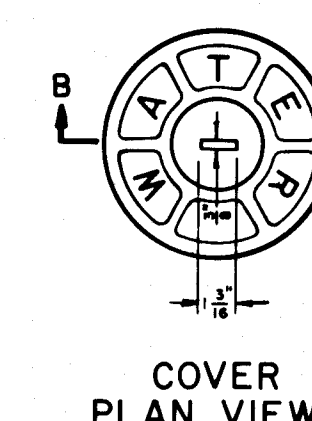
- MAXIMUM DURATION OF CLOSURE ON INDIAN SCHOOL ROAD NOT TO EXCEED TWO (2) WORKING DAYS.
- MAXIMUM DURATION OF CLOSURE ON PENNSYLVANIA AVENUE NOT TO EXCEED TWO (2) WORKING DAYS.

INDEX

- COVER SHEET
- WATERLINE PLAN & PROFILE



RING
PLAN VIEW



COVER
PLAN VIEW

FIRE LINE RING & COVER FOR VALVE BOX

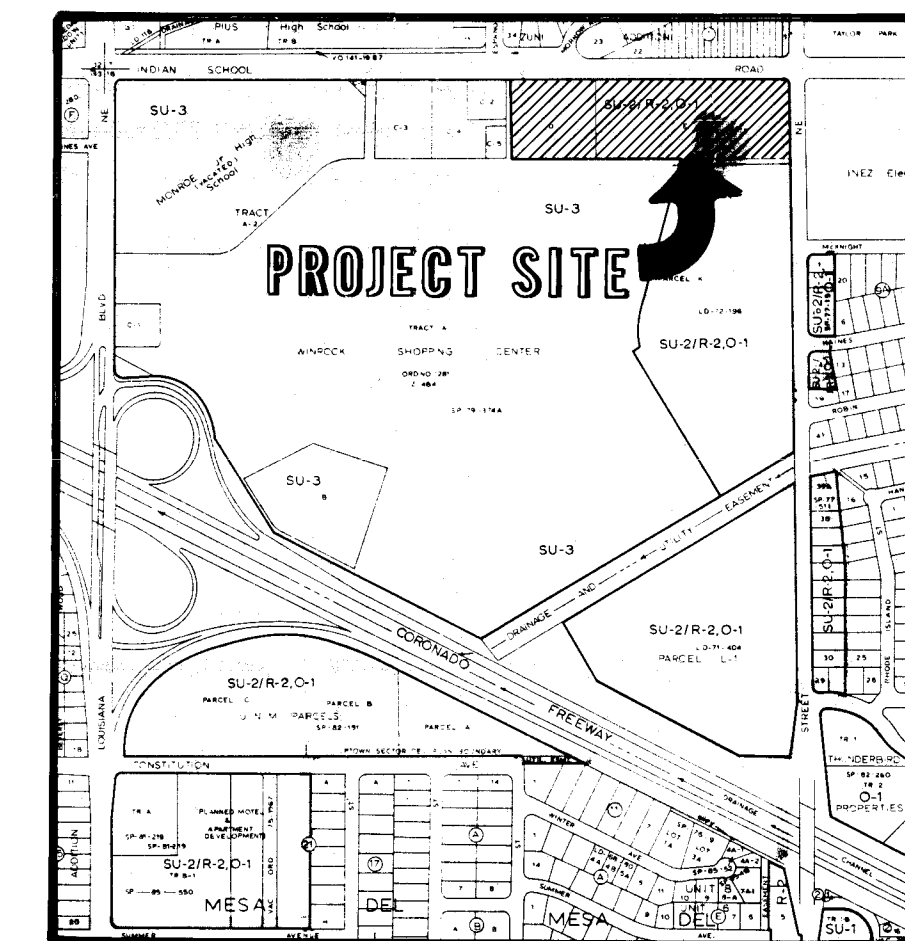
1. SECTIONS A-A & B-B IN ACCORDANCE W/ C.O.A. STD. DWG. 2328

2. VALVE BOX RING SHALL BE SPECIAL CASTING TO SHOW "FIRE LINE" DESIGNATION FOR ALL VALVE BOXES LOCATED IN PUBLIC R.O.W. WHICH PROVIDE ACCESS TO VALVES LOCATED ON PRIVATE FIRE LINES.

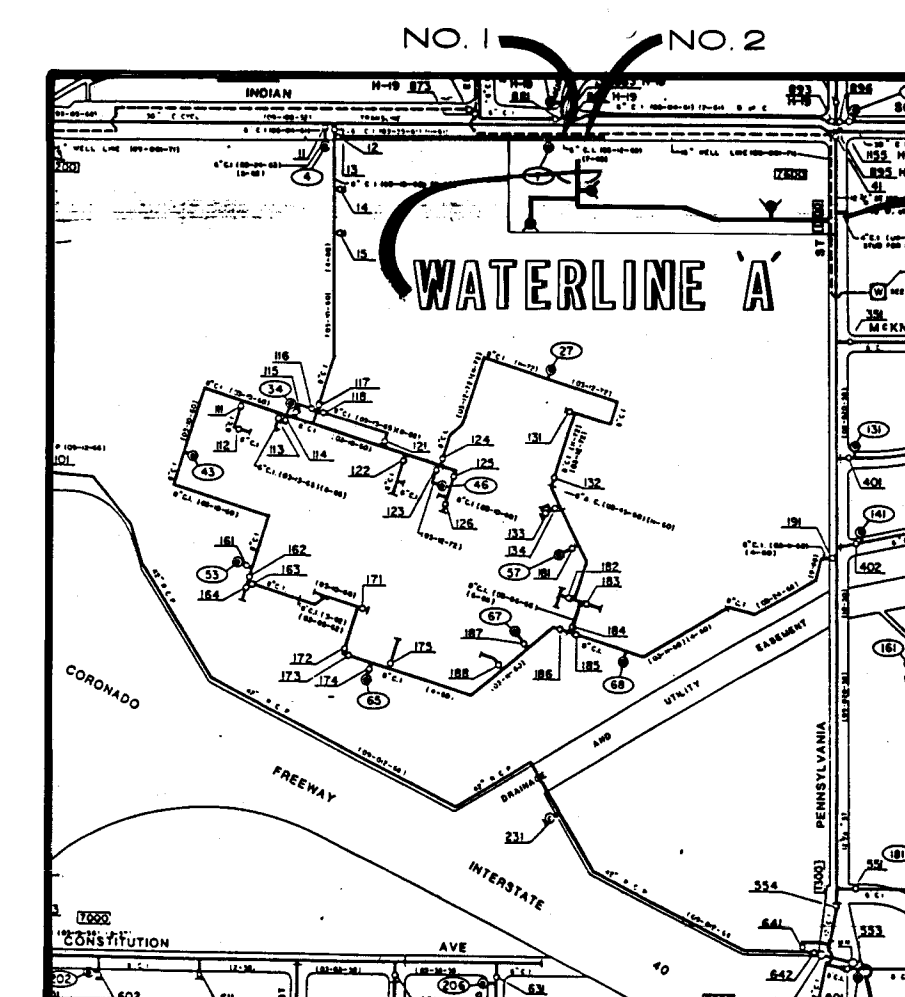
APPROVED FOR
CONSTRUCTION
[Signature]
11-16-88

DRAWING NO.

3524

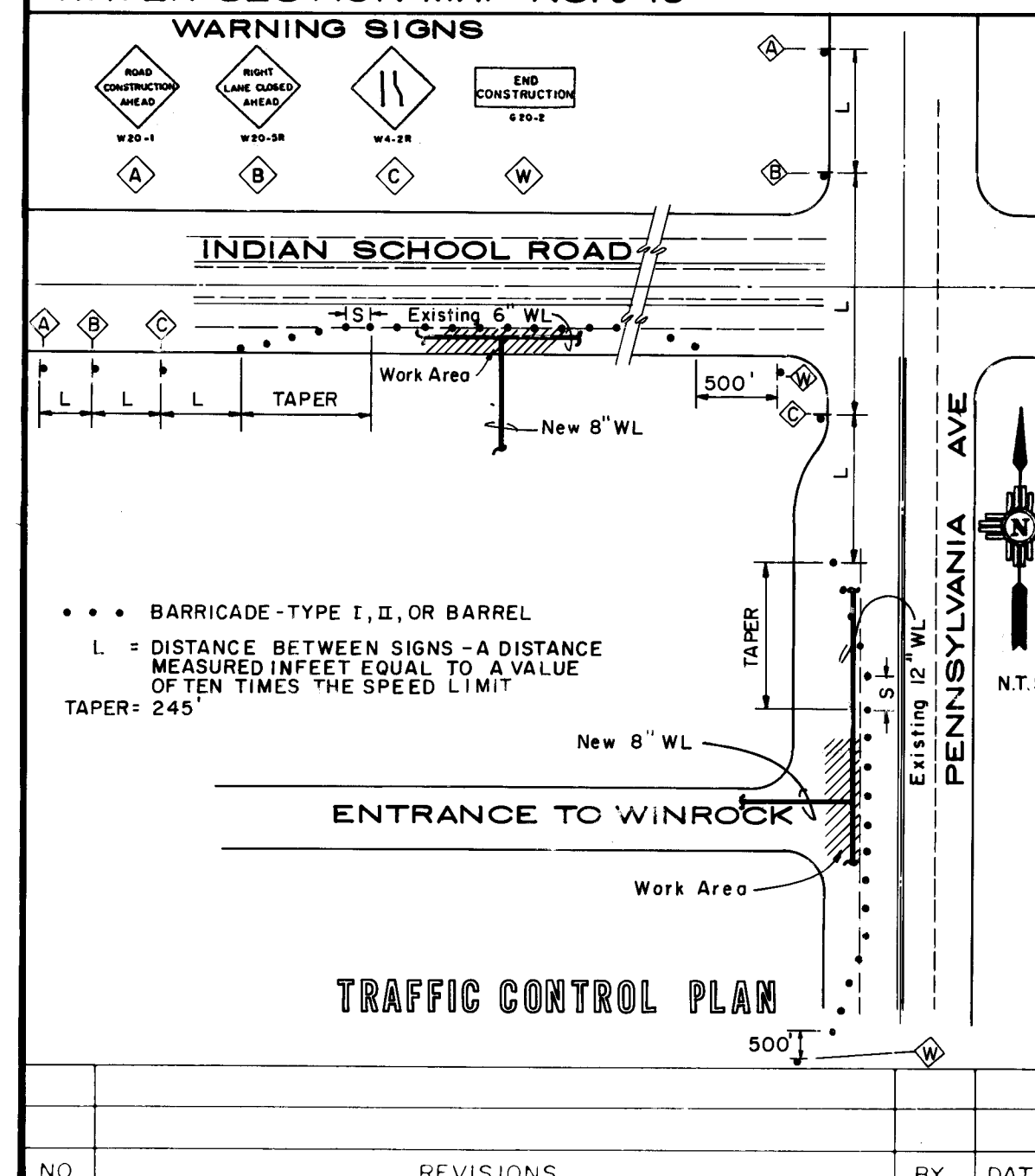


VICINITY MAP
ZONE ATLAS MAP NO. J-19



REFER TO WATER SHUT OFF PLAN NOTES

WATER SHUT OFF PLAN
WATER SECTION MAP NO. J-19

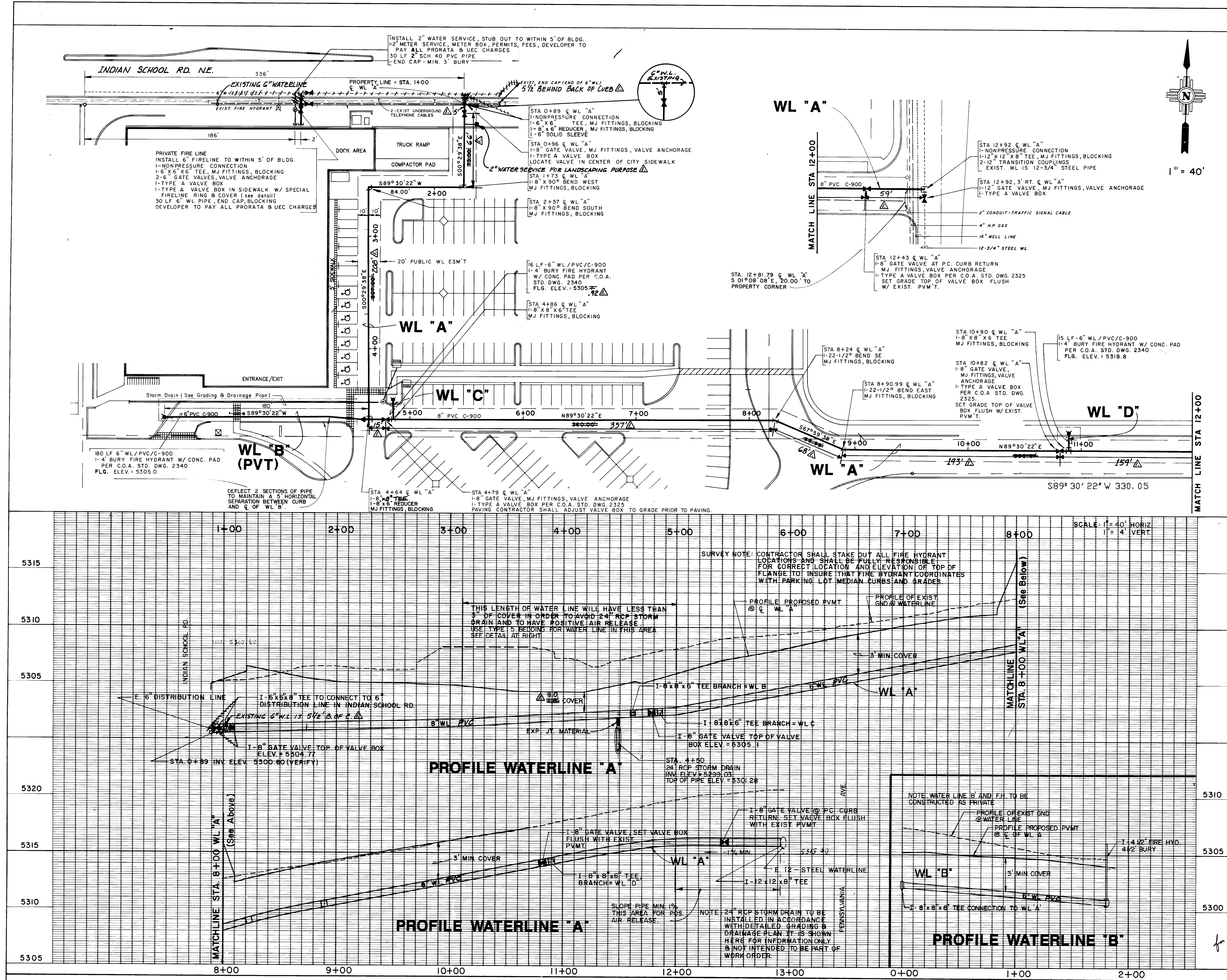


TOYS "R" US
WATERLINE EXTENSION
&
FIRE HYDRANT LEG

EASTERLING & ASSOCIATES, INC.
CONSULTING ENGINEERS

5643 Paradise Blvd. N.W.
Albuquerque, New Mexico 87114

Designed: DWG Drawn: JEL Checked: DWG Sheet: 1 of 2
Job No.: 2012-B Date: APRIL 1988



NOTE:

- WINROCK MEDICAL PLAZA TO BE DEMOLISHED BY OTHERS PRIOR TO CONSTRUCTING WATERLINES.
- 6" FIRE LINE AND 2" METERED SERVICE SHALL BE INSTALLED TO WITHIN 5' OF BUILDING 3.5'-4.0' BELOW FINISHED FLOOR ELEVATION, CAPPED AND BLOCKED. UTILITY CONTRACTOR SHALL COORDINATE WITH BUILDING CONTRACTOR TO DETERMINE EXACT LOCATION OF WATERLINES IN FIELD.
- ALL PAVEMENT DAMAGED OR REMOVED ALONG WINROCK ACCESS ROAD SHALL BE REMOVED FROM PROJECT. PAVEMENT PATCH SHALL EQUAL OR EXCEED THICKNESS OF EXISTING PAVEMENT SECTION.
- ALL CONCRETE CURB, GUTTER AND VALLEY GUTTER REMOVAL AND REPLACEMENT SHALL BE INCIDENTAL TO COST OF WATERLINE.
- CONTRACTOR SHALL STAKE OUT ALL FIRE HYDRANT LOCATIONS AND SHALL BE FULLY RESPONSIBLE FOR CORRECT LOCATION AND ELEVATION OF TOP OF FLANGE TO INSURE THAT FIRE HYDRANT COORDINATES WITH PARKING LOT MEDIAN CURBS AND GRADES.
- 24" RCP STORM DRAIN TO BE INSTALLED, IN ACCORDANCE WITH DETAILED GRADING AND DRAINAGE PLAN. IT IS SHOWN HERE FOR INFORMATION ONLY AND NOT INTENDED TO BE PART OF THE WORK ORDER.

MINIMUM WATERLINE CLEARANCE:

WATERLINES WHICH CROSS EACH OTHER SHALL HAVE A MINIMUM 6" CLEARANCE OUTSIDE OF PIPE TO OUTSIDE OF PIPE. FOR WATERLINE SIZES GREATER THAN 14 INCHES, CONTRACTOR SHALL FABRICATE NEOPRENE SPACER BETWEEN PIPES WHICH HAVE LESS THAN 8" CLEARANCE. SPACER SHALL BE CONSTRUCTED OF EIGHT 12"x12"x1" SHEETS OF NEOPRENE EXPANSION JOINT MATERIAL.

TYPE 5

Pipe bedded in compacted granular material to centerline of pipe, 4-in. minimum under pipe. Compacted granular or select material to top of pipe. (Approximately 90 percent Standard Proctor, AASHTO T-99)

BEDDING FOR SHALLOW WATER LINE

PROPOSED IMPROVEMENTS

Legend: GATE VALVE, FIRE HYDRANT, FITTINGS, REDUCER, NEW WATERLINE

26 35240288

CITY OF ALBUQUERQUE
MUNICIPAL DEVELOPMENT DEPARTMENT
ENGINEERING DIVISION

TITLE: **TOYS "R" US
WATERLINE PLAN & PROFILE**

APPROVALS	ENGINEER	DATE	APPROVALS	ENGINEER	DATE
City Engineer	<i>[Signature]</i>	7/15/88	Liquid Waste	PEGO	7/16/88
A.C.E.-Design			Traffic		
A.C.E.-Hydrology	<i>[Signature]</i>	7/15/88	Water	<i>[Signature]</i>	7/16/88

DRAWING NO.	3524	MAP NO.	J-19	SHEET	2	OF	2
-------------	------	---------	------	-------	---	----	---

CONSTRUCTION CONTRACT SHEET NO. C7b