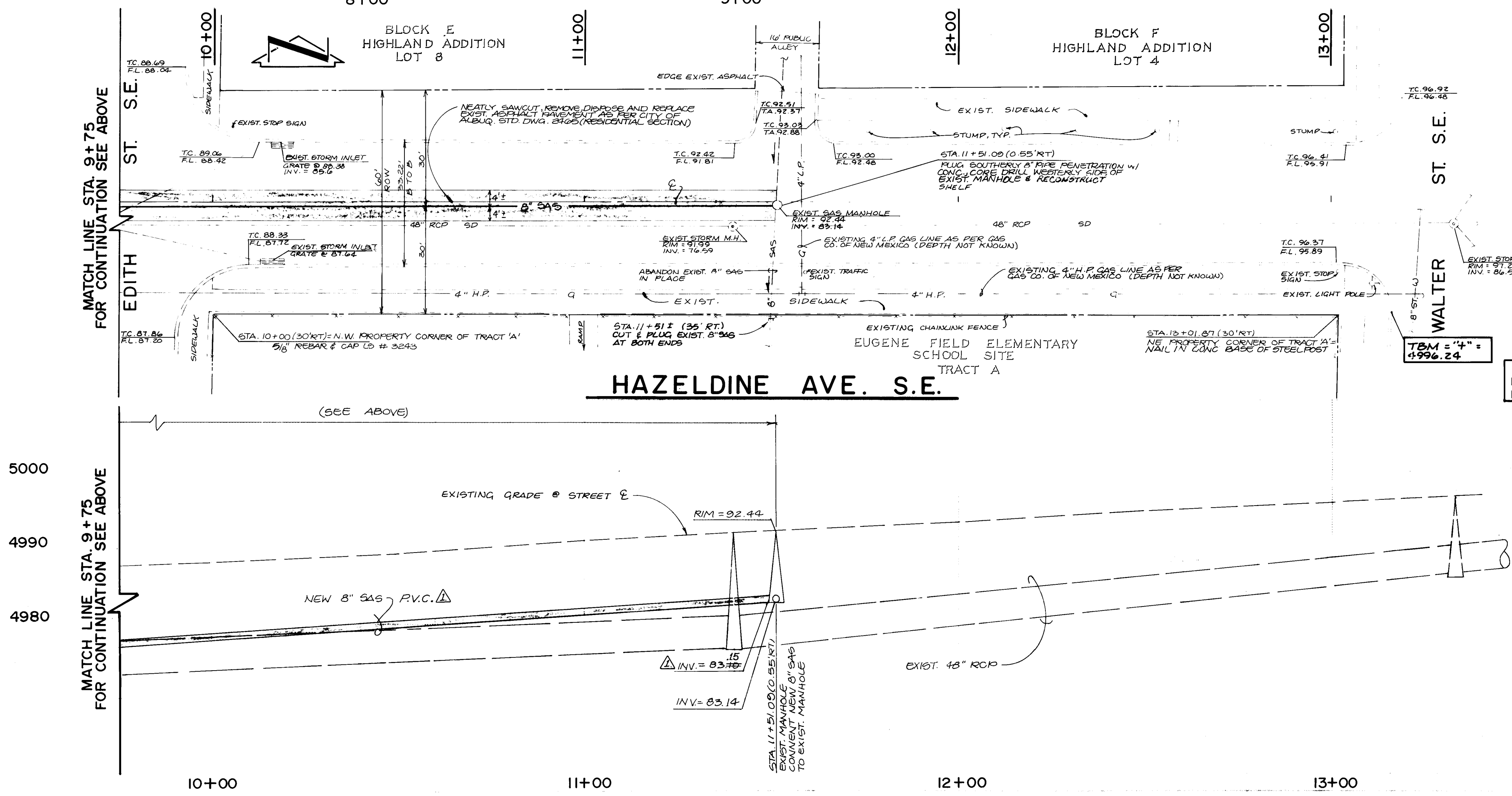
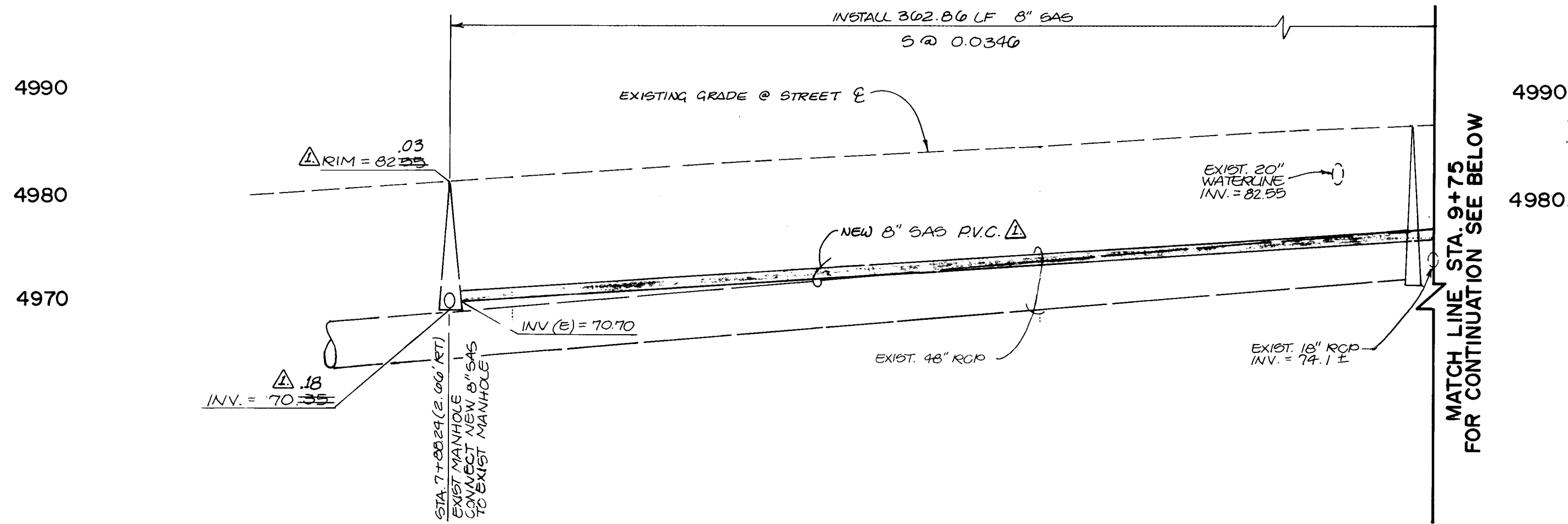


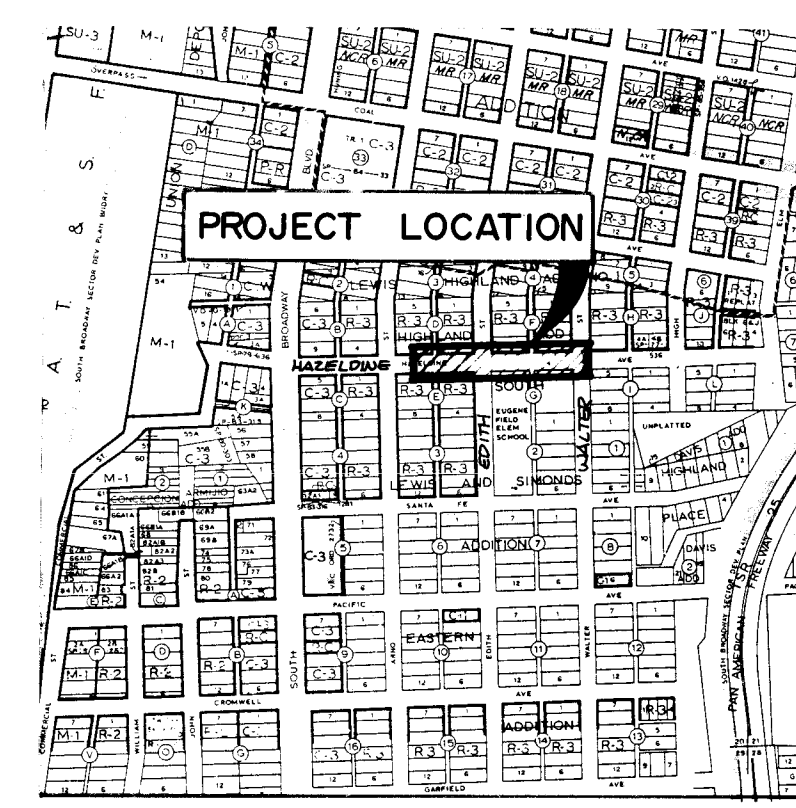
SCALE:
1" = 20' HORIZONTAL
1" = 10' VERTICAL



SCALE:
1" = 20' HORIZONTAL
1" = 10' VERTICAL

APPROVAL OF AS BUILT DRAWINGS
CHIEF CONSTRUCTION ENGINEER
[Signature]
DATE 5-10-89

26 36230189



SCALE: 1" = 800'

- GENERAL NOTES:
- ALL WORK DETAILED ON THESE PLANS TO BE PERFORMED UNDER CONTRACT SHALL, EXCEPT AS OTHERWISE STATED OR PROVIDED FOR HEREON, BE CONSTRUCTED IN ACCORDANCE WITH THE CITY OF ALBUQUERQUE STANDARD SPECIFICATIONS FOR PUBLIC WORKS CONSTRUCTION - 1986.
 - TWO (2) WORKING DAYS PRIOR TO ANY EXCAVATION, CONTRACTOR MUST CONTACT LINE LOCATING SERVICE, 765-1234, FOR LOCATION OF EXISTING UTILITIES.
 - IF ANY UTILITY LINES, PIPELINES, OR UNDERGROUND UTILITY LINES ARE SHOWN ON THESE DRAWINGS, THEY ARE SHOWN IN AN APPROXIMATE MANNER ONLY, AND SUCH LINES MAY EXIST WHERE NONE ARE SHOWN. IF ANY SUCH EXISTING LINES ARE SHOWN, THE LOCATION IS BASED UPON INFORMATION PROVIDED BY THE OWNER OF SAID UTILITY, AND THE INFORMATION MAY BE INCOMPLETE, OR MAY BE OBSOLETE BY THE TIME CONSTRUCTION COMMENCES. THE ENGINEER HAS UNDERTAKEN NO FIELD VERIFICATION OF THE LOCATION, DEPTH, SIZE, OR TYPE OF EXISTING UTILITY LINES, PIPELINES, OR UNDERGROUND UTILITY LINES, MAKES NO REPRESENTATION PERTAINING THERETO, AND ASSUMES NO RESPONSIBILITY OR LIABILITY THEREFOR. THE CONTRACTOR SHALL INFORM ITSELF OF THE LOCATION OF ANY UTILITY LINE, PIPELINE, OR UNDERGROUND UTILITY LINE IN OR NEAR THE AREA OF THE WORK IN ADVANCE OF AND DURING EXCAVATION WORK. THE CONTRACTOR IS FULLY RESPONSIBLE FOR ANY AND ALL DAMAGE CAUSED BY ITS FAILURE TO LOCATE, IDENTIFY AND PRESERVE ANY AND ALL EXISTING UTILITIES, PIPELINES, AND UNDERGROUND UTILITY LINES. IN PLANNING AND CONDUCTING EXCAVATION, THE CONTRACTOR SHALL COMPLY WITH STATE STATUTES, MUNICIPAL AND LOCAL ORDINANCES, RULES AND REGULATIONS, IF ANY, PERTAINING TO THE LOCATION OF THESE LINES AND FACILITIES.
 - SHOULD A CONFLICT EXIST BETWEEN THESE PLANS AND ACTUAL FIELD CONDITIONS, THE CONTRACTOR SHALL PROMPTLY NOTIFY THE ENGINEER IN WRITING SO THAT THE CONFLICT CAN BE RESOLVED WITH A MINIMUM AMOUNT OF DELAY FOR ALL PARTIES.
 - THE CONTRACTOR SHALL MAINTAIN ACCESS TO ADJACENT PROPERTIES DURING CONSTRUCTION.
 - ALL WORK ON THIS PROJECT SHALL BE PERFORMED IN ACCORDANCE WITH APPLICABLE FEDERAL, STATE AND LOCAL LAWS, RULES AND REGULATIONS CONCERNING SAFETY AND HEALTH.
 - CONTRACTOR SHALL LIMIT OPERATION WITHIN ROADWAY TO THE HOURS SPECIFIED BY THE BARRICADING OR CONSTRUCTION CO-ORDINATION ENGINEER AT 768-2552.
 - ALL UTILITIES AND UTILITY SERVICE LINES SHALL BE INSTALLED PRIOR TO PAVING.
 - BACKFILL COMPACTION SHALL BE ACCORDING TO SPECIFIED STREET USE.
 - ALL STATIONING IS BASED ON STREET CENTERLINE UNLESS INDICATED OTHERWISE.
 - ALL SEWER PIPE SHALL BE PVC (SDR 35) OR AS APPROVED BY THE CITY OF ALBUQUERQUE CITY ENGINEER (SEE NOTE 14).
 - SLOPES SHOWN ON THE PROFILES ARE BASED ON TRUE DISTANCES.
 - VITRIFIED CLAY AND DUCTILE IRON ARE ACCEPTABLE PIPE MATERIALS IN LIEU OF PVC.
 - CONTRACTOR SHALL ADHERE TO SECTION 19 OF THE CITY OF ALBUQUERQUE STANDARD SPECIFICATIONS FOR CONSTRUCTION, 1986.
 - CONTRACTOR SHALL LIMIT OPERATION WITHIN ROADWAY TO THE HOURS SPECIFIED BY THE BARRICADING OR CONSTRUCTION CO-ORDINATION ENGINEER AT 768-2552.

PUBLIC WORKS DEPARTMENT
ENGINEERING GROUP
SANITARY SEWER EXTENSION FOR
EUGENE FIELD SCHOOL
HAZELDINE AVE. S.E.
STA. 7 + 88.24 TO STA. 11 + 51.09

9-30-88
9-30-88
9-30-88

B.M. # 14-K-14; A SQUARE, 12" CHISELED ON TOP OF CONCRETE CURB AT THE NW CURB RETURN AT THE INTERSECTION OF BROADWAY BLVD. S.E. AND HAZELDINE AVE. S.E.
ELEVATION = 4965.108 FEET (M.S.L.D.)



5/10/89 Revised from as-built information
EN.
C.P.U.
S.G.H. & R.A.R.
J.C.M.