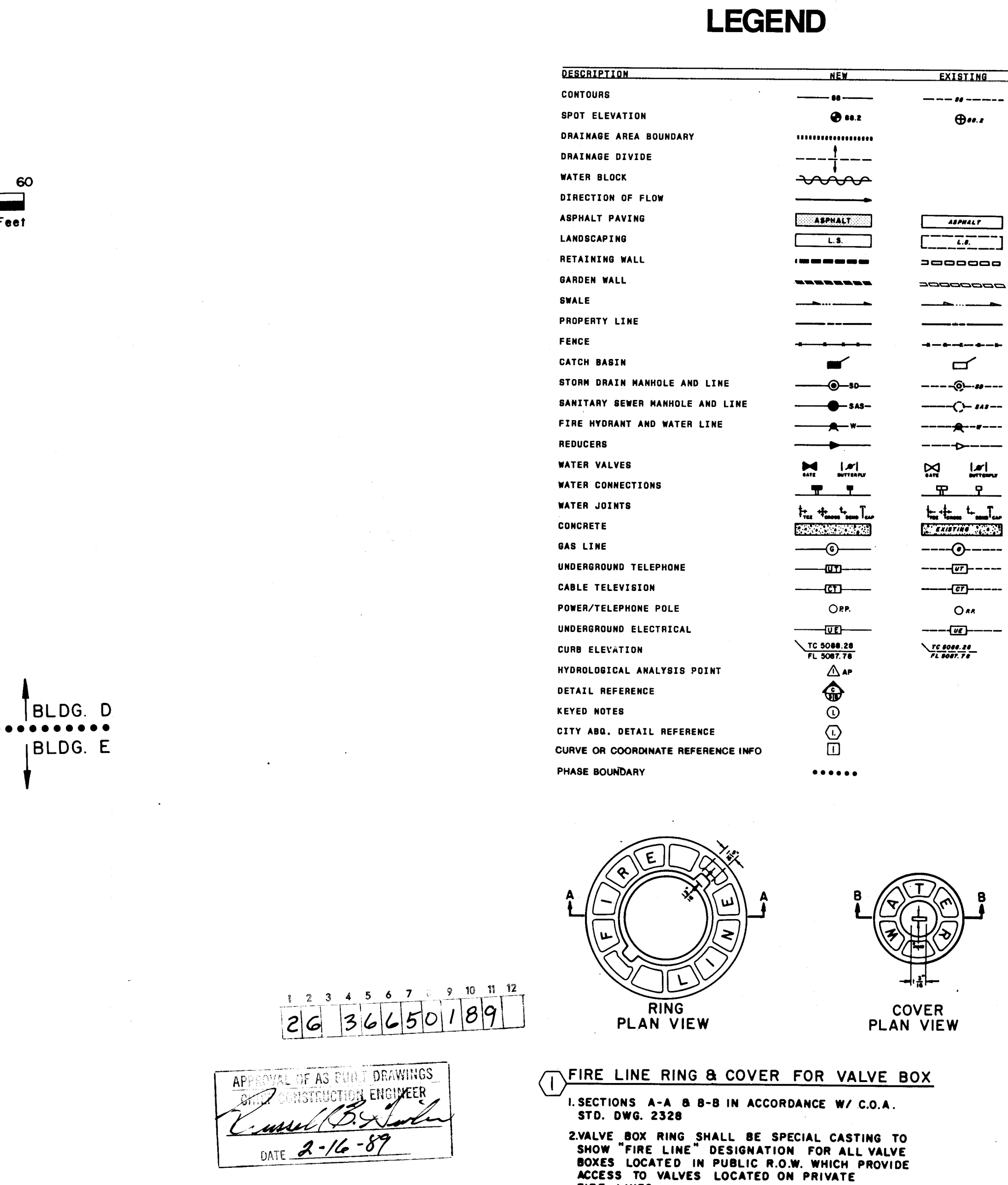
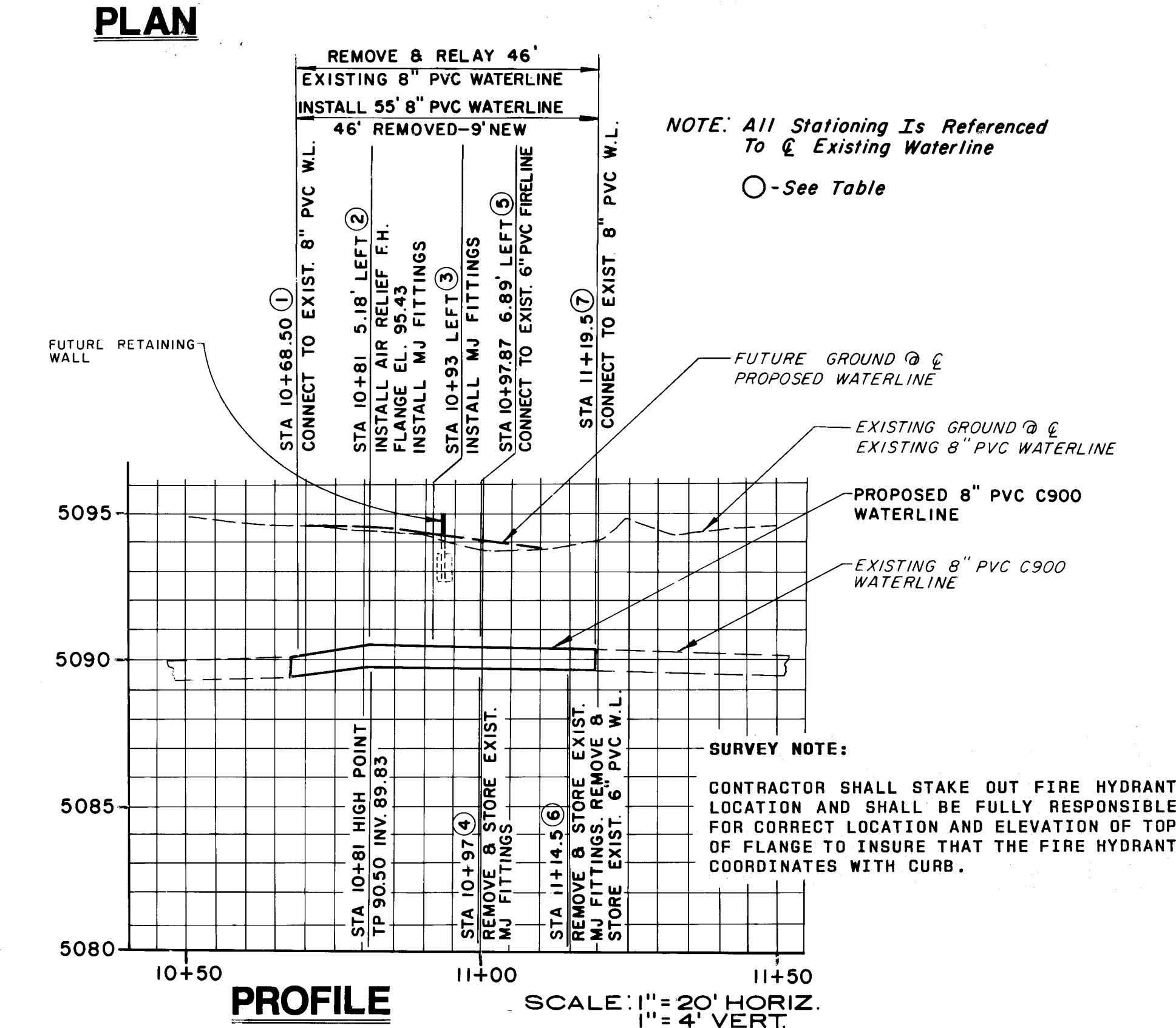
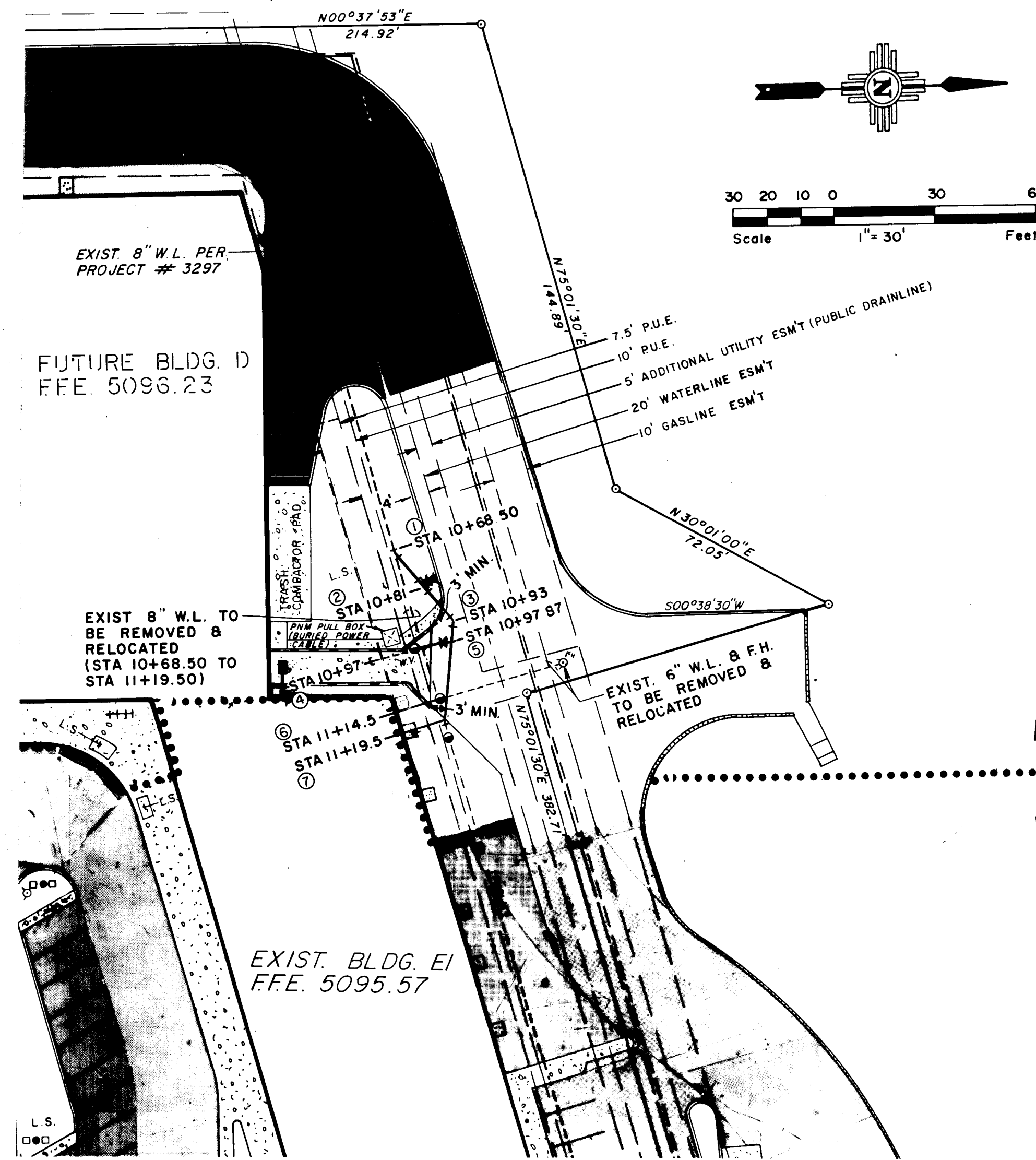
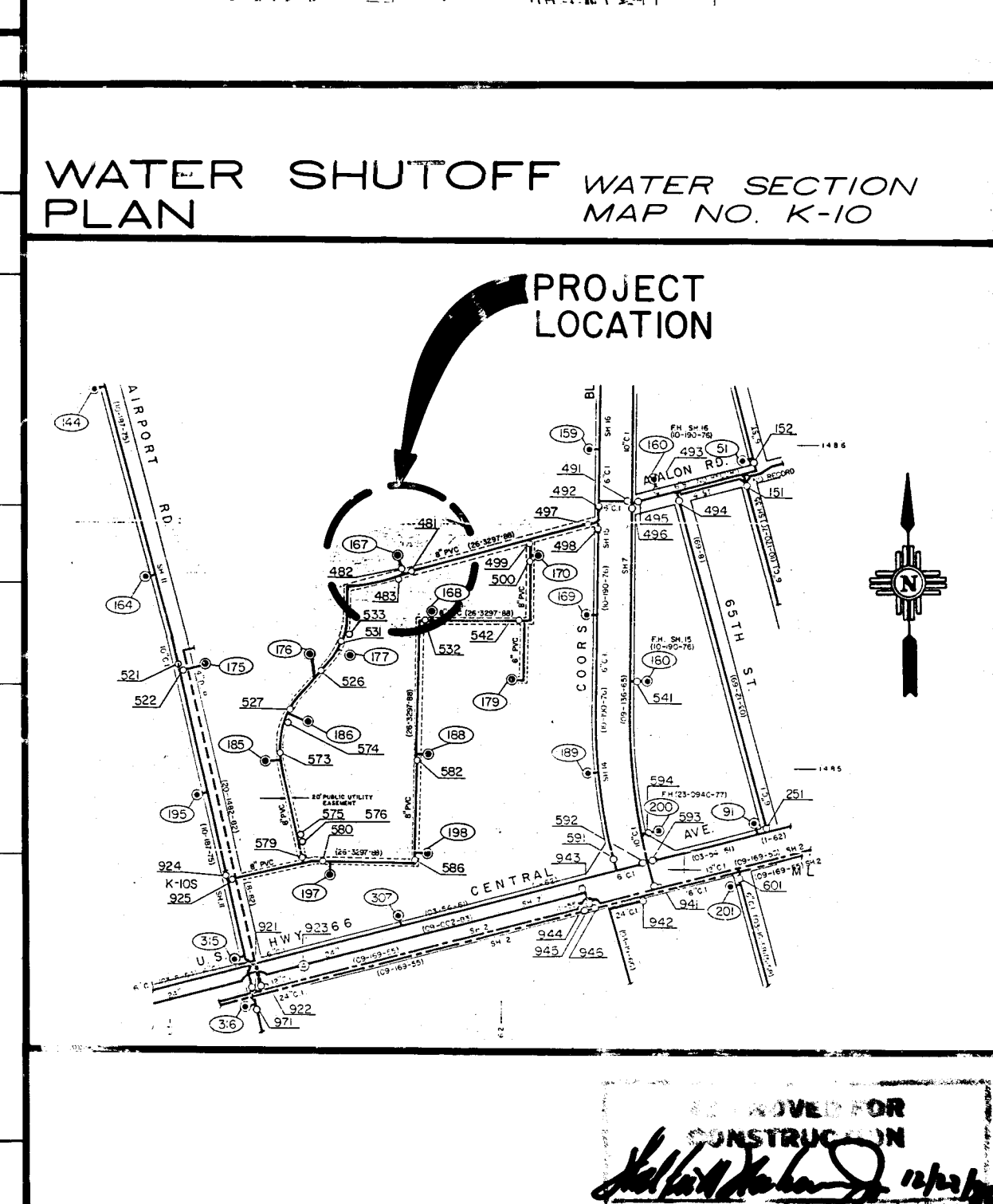
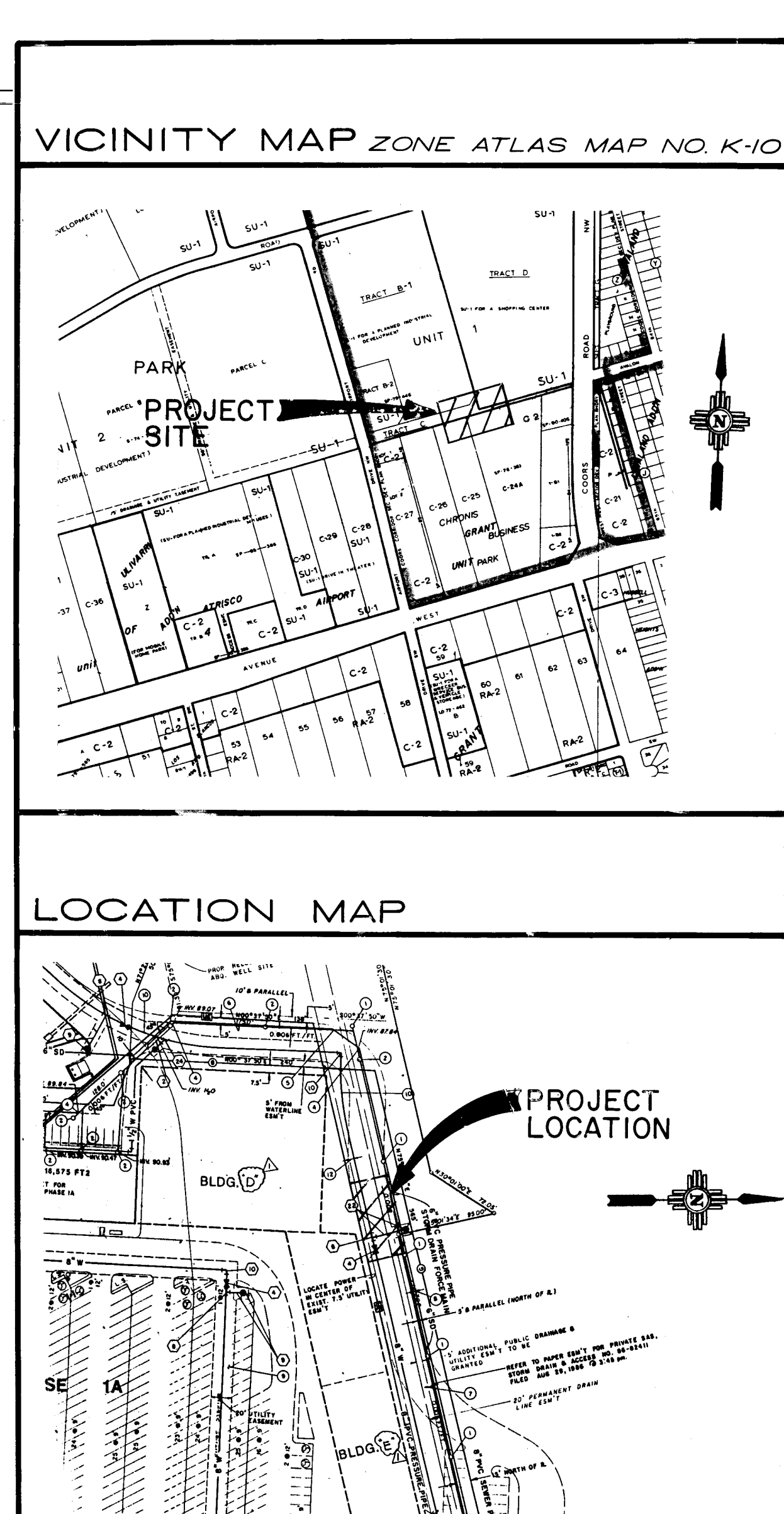


COORS & CENTRAL BUILDING D WATERLINE RELOCATION



KEY NOTE REF.	STATION	OFFSET	ITEM DESCRIPTION	MATERIALS - NEW	MATERIALS - EXISTING (TO BE INSTALLED)	COA STD. DWG.
①	10+68.50	0	NON-PRESSURE CONNECTION	1-8"x22-1/2" BEND, W/BLKG		
②	10+81.00	5.18' LT	INSTALL AIR RELIEF FIRE HYDRANT 4-1/2' BURY AND MJ FITTINGS		1-AIR RELIEF FIRE HYDRANT MJ W/BLKG 1-8"x8"x6" TEE, MJ W/BLKG 1-6"x80" BEND, MJ W/BLKG 1-6" GATE VALVE, MJ W/BLKG 1-TYPE "A" VALVE BOX 5'-6" PVC C900 WATERLINE	2340, 2344 2320 2320 2333 2325, 2328
③	10+93.00	10.98' LT	INSTALL 45° BEND RIGHT (SOUTH)	1-8"x45° BEND, W/BLKG		2320
④	10+97.00	0	REMOVE AND STORE EXISTING MJ FITTINGS FOR RELOCATION @ STA 10+97.87	1-FIRE RING AS PER ①	1-8"x8"x6" TEE, MJ 1-6" GATE VALVE 1-TYPE "A" VALVE BOX	①
⑤	10+97.87	8.96' LT	RECONNECT FIRE PROTECTION LINE AND INSTALL FITTINGS	1-8"x22-1/2" BEND, MJ W/BLKG	1-8"x8"x6" TEE, MJ W/BLKG 1-6" GATE VALVE, MJ W/BLKG 1-TYPE "A" VALVE BOX	2320 2333 2325, 2328
⑥	11+14.50	0	REMOVE AND STORE EXISTING MJ FITTINGS AND EXISTING WATERLINE FOR RELOCATION @ STA 10+81 RELOCATE 9.5' OF 6" PVC @ STA 10+97.87		1-AIR RELIEF FIRE HYDRANT, MJ 1-8"x8"x6" TEE, MJ 1-6"x80" BEND, MJ 1-6" GATE VALVE, MJ 1-TYPE "A" VALVE BOX 40'-6" PVC C900 WATERLINE	2320
⑦	11+19.50	0	NON-PRESSURE CONNECTION	1-8"x22-1/2" BEND, W/BLKG		

NOTE: ALL STATIONING IS REFERENCED TO CENTERLINE OF EXISTING WATERLINE.



GENERAL

1. **CONTRACTOR NOTE:** THESE DRAWINGS REFLECT INFORMATION ON UTILITIES GATHERED BY (SITE INSPECTION, DISCUSSIONS WITH MUNICIPAL OFFICIALS AND PREVIOUS CONSTRUCTION DRAWINGS). IT IS POSSIBLE THAT THE EXACT LOCATION OF LINES AND UTILITY CONNECTION POINTS IN THE IMMEDIATE VICINITY OF THE PROPOSED SITE MAY BE SLIGHTLY DIFFERENT FROM THE LOCATION SHOWN ON THIS DRAWING. PRIOR TO CONSTRUCTION, THE CONTRACTOR SHALL EXCAVATE AND VERIFY THE HORIZONTAL AND VERTICAL LOCATIONS OF ALL OBSTRUCTIONS. SHOULD A CONFLICT EXIST, THE CONTRACTOR SHALL NOTIFY THE ENGINEER SO THAT THE CONFLICT CAN BE RESOLVED WITH A MINIMUM AMOUNT OF DELAY.

2. **UTILITY SPOT REQUESTS:** TWO WORKING DAYS PRIOR TO ANY EXCAVATION, CONTRACTOR MUST CONTACT LINE LOCATING SERVICE, 765-1234, FOR LOCATION OF EXISTING UTILITIES. CONTRACTOR SHALL COORDINATE ALL UTILITY WORK INCLUDING CUT OFF OF EXISTING UTILITIES FOR NEW CONNECTIONS (FIRE PROTECTION, DOMESTIC WATER, SEWER, STORM DRAIN, GAS PIPING, ETC.) WITH ENGINEER, OWNER, AND LOCAL UTILITY REPRESENTATIVES.

3. **SPECIFICATIONS:** ALL WATER AND SEWER UTILITY WORK DETAILED ON THESE PLANS, EXCEPT AS OTHERWISE STATED OR PROVIDED HEREON, SHALL BE CONSTRUCTED IN ACCORDANCE WITH THE CITY OF ALBUQUERQUE STANDARD SPECIFICATIONS FOR PUBLIC WORKS CONSTRUCTION - 1986 EDITION.

4. **PAVEMENT CUTS:** ALL PAVEMENT CUTS SHALL BE RECONSTRUCTED IN ACCORDANCE WITH CITY OF ALBUQUERQUE STD. DWG. 2465. ALL UTILITIES AND UTILITY SERVICE LINES SHALL BE INSTALLED PRIOR TO PAVING.

5. **OWNERSHIP OF DOCUMENTS:** THIS DOCUMENT, AND THE IDEAS AND DESIGNS INCORPORATED HEREIN, AS AN INSTRUMENT OF PROFESSIONAL SERVICE, IS THE PROPERTY OF EASTERLING & ASSOCIATES, INC. AND IS NOT TO BE USED, IN WHOLE OR IN PART, FOR ANY OTHER PROJECT WITHOUT THE WRITTEN AUTHORIZATION OF EASTERLING & ASSOCIATES, INC.

6. **CONSTRUCTION SAFETY:** THESE DRAWINGS DO NOT INCLUDE NECESSARY COMPONENTS FOR CONSTRUCTION SAFETY WHICH SHALL REMAIN THE CONTRACTOR'S RESPONSIBILITY.

7. **CONSTRUCTION PHASE:** THE CONTRACTOR SHALL EXERCISE REASONABLE CARE DURING CONSTRUCTION TO PREVENT THE MOVEMENT OF SEDIMENT FROM THE SITE INTO THE STREET. LOOSE SOIL STOCKPILES IN THE STREET DURING UTILITY CONNECTION ACTIVITIES SHALL BE PROTECTED FROM BEING CARRIED DOWNSTREAM BY FLOWING WATER IN THE STREET.

8. **WATER SHUTOFFS:** CONTRACTOR SHALL COORDINATE WITH WATER SYSTEMS DIVISION A MINIMUM OF THREE (3) WORKING DAYS PRIOR TO IMPLEMENTING THE PROPOSED WATER VALVE SHUTOFF PLAN.

WATER SHUTOFF PLAN

REFER TO CITY OF ALBUQUERQUE WATER DISTRIBUTION SYSTEM SECTIONAL MAP K-10 FOR VALVE LOCATIONS AND NUMBER DESIGNATIONS. CONTRACTOR SHALL COORDINATE VALVE SHUTOFF WITH THE WATER SYSTEMS DIVISION MANAGER AT LEAST TWO (2) WORKING DAYS IN ADVANCE OF ANY WORK THAT MAY AFFECT EXISTING PUBLIC WATERLINES.

TRAFFIC CONTROL PLAN

NO TRAFFIC CONTROL PLAN REQUIRED SINCE PROJECT LOCATION IS ON PRIVATE PROPERTY AND WATERLINE RELOCATION WILL OCCUR IN CONJUNCTION WITH BUILDING CONSTRUCTION.

CITY OF ALBUQUERQUE PUBLIC WORKS DEPARTMENT ENGINEERING GROUP

TITLE: COORS & CENTRAL-BUILDING D WATERLINE RELOCATION

APPROVALS	ENGINEER	DATE	APPROVALS	ENGINEER	DATE
DRC Chair	J.E. Eshagard	11/25/88			
Trans. Dev	J.E. Eshagard	11/25/88			
Utility Dev	J.E. Eshagard	11/25/88			
Hydrology	Rep. A. Khan	11/23/88			

DRAWING NO. 3665 MAP NO. K-10 SHEET 1 OF 1

DESIGNED BY MJG DATE 10/25/88
DRAWN BY BRG DATE 10/25/88
CHECKED BY DWK DATE 10/26/88