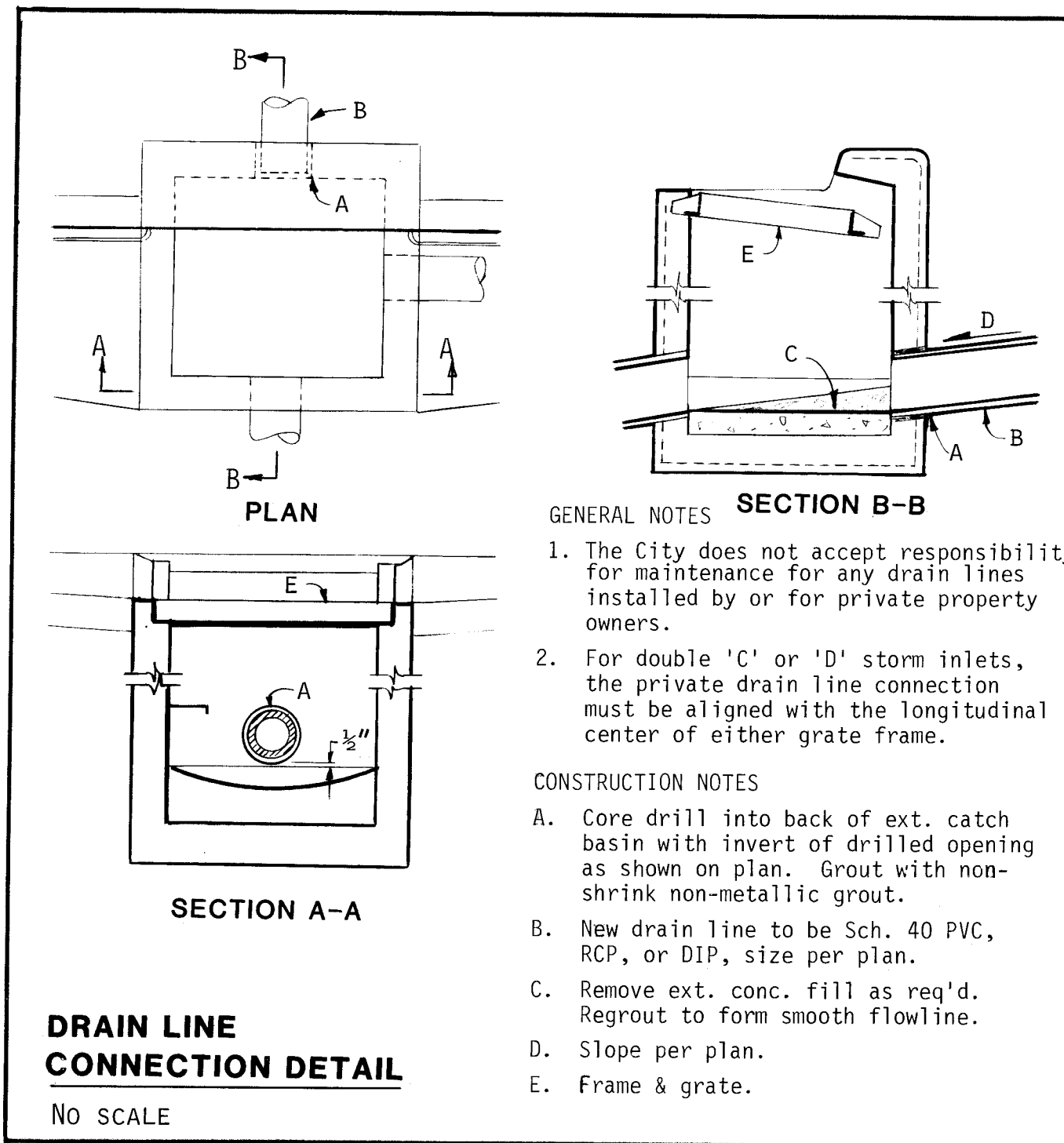
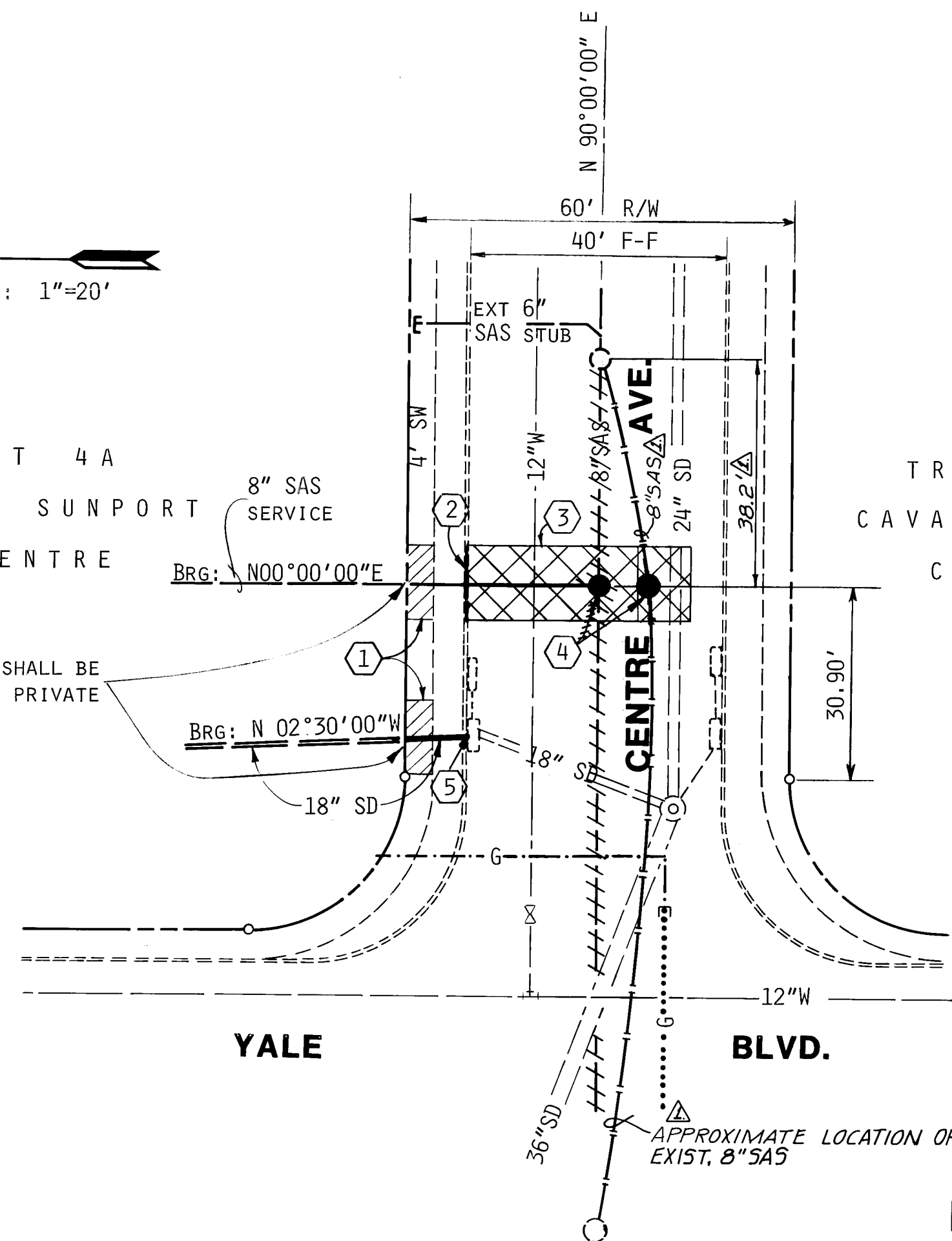




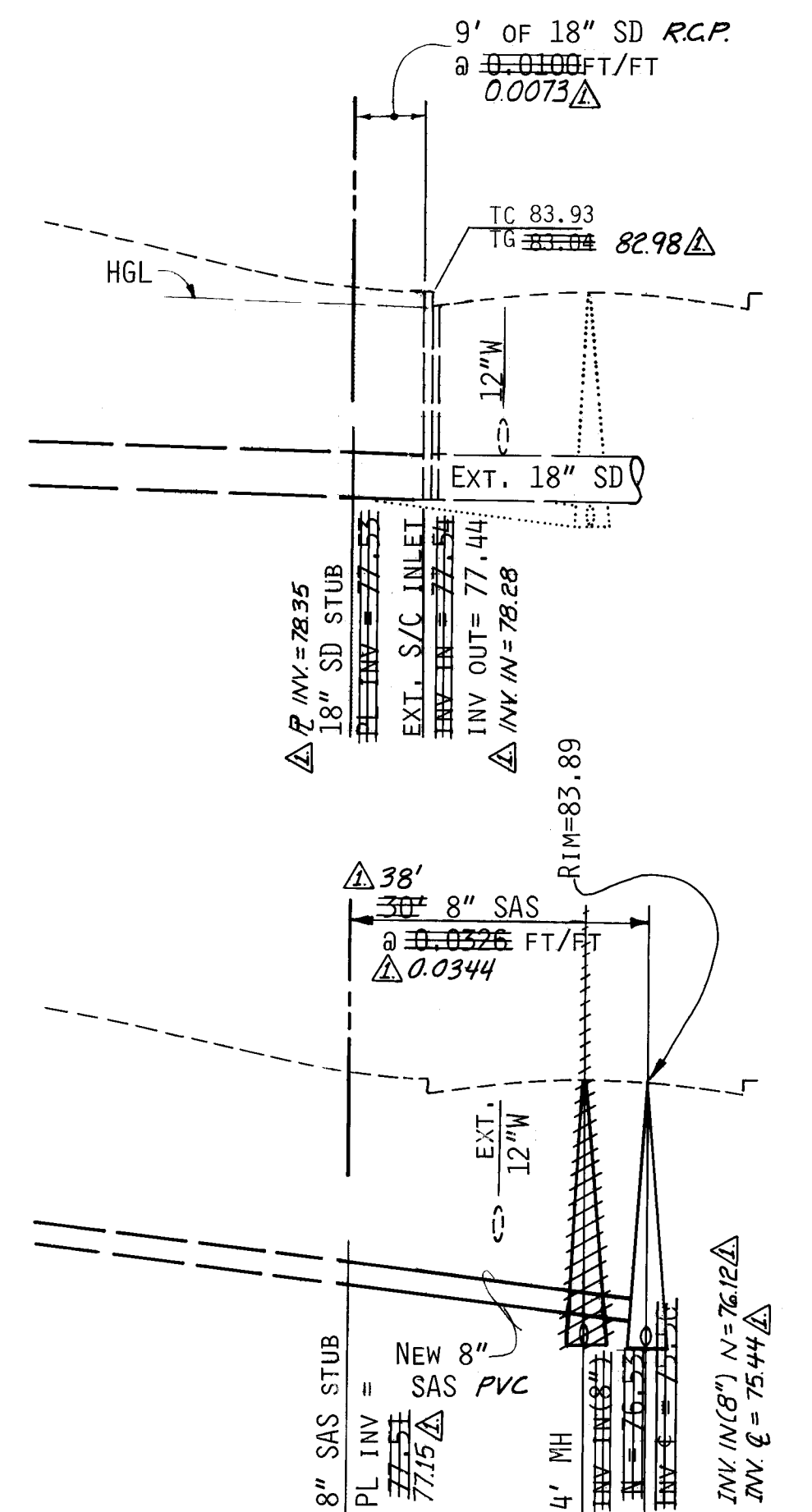
TRACT 4A  
CAVAN SUNPORT  
CENTRE

TRACT 8  
CAVAN SUNPORT  
CENTRE

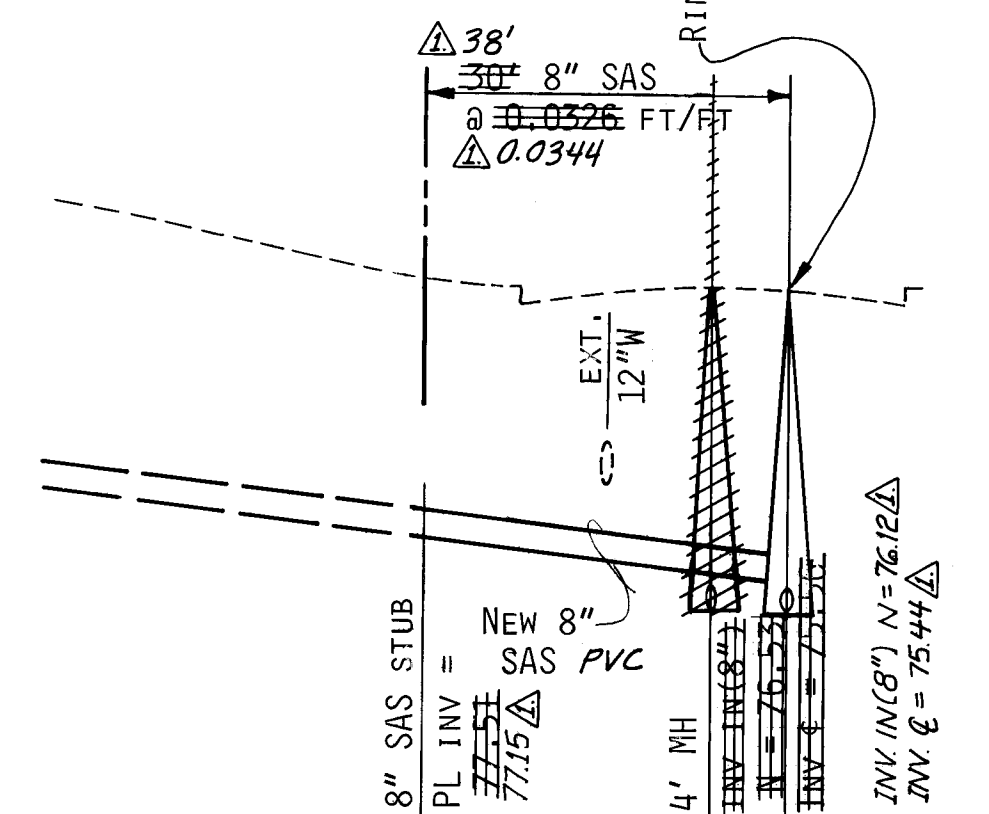
NOTE: CONNECTIONS SHALL BE  
MADE BY SEPARATE PRIVATE  
CONTRACT



## MARRIOTT HOTEL-UTILITY CONNECTIONS



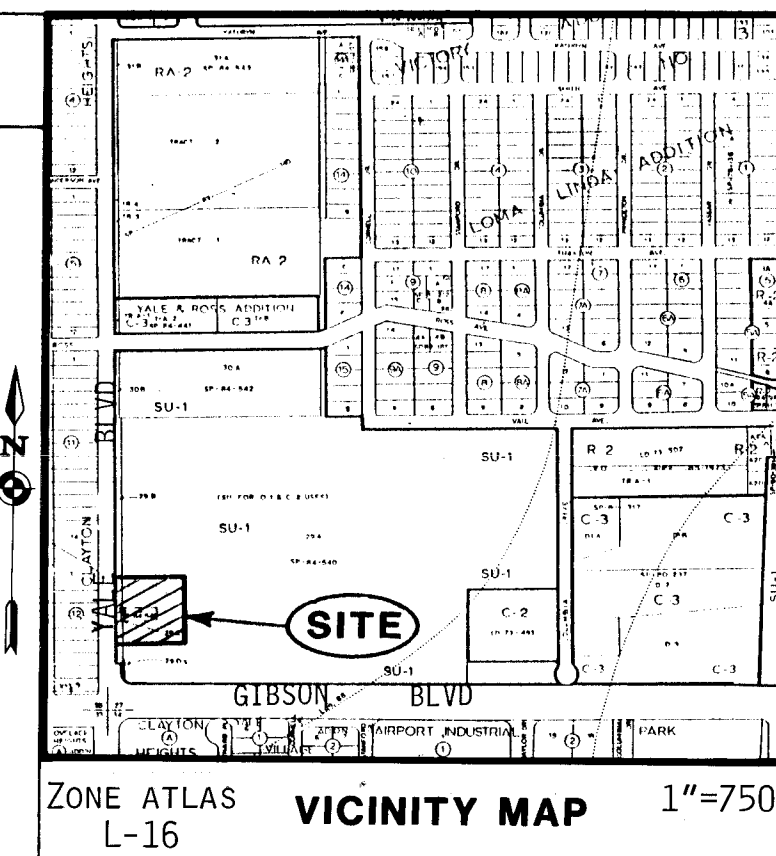
STORM DRAIN CONNECTION PROFILE



SANITARY SEWER CONNECTION PROFILE

### CITY OF ALBUQUERQUE GENERAL NOTES

- ALL WORK DETAILED ON THIS PLAN TO BE PERFORMED UNDER CONTRACT SHALL, EXCEPT AS OTHERWISE STATED OR PROVIDED FOR HEREON, BE CONSTRUCTED IN ACCORDANCE WITH THE CITY OF ALBUQUERQUE STANDARD SPECIFICATIONS FOR PUBLIC WORKS CONSTRUCTION, 1986.
- TWO (2) WORKING DAYS PRIOR TO ANY EXCAVATION, CONTRACTOR MUST CONTACT LINE LOCATING SERVICE, 765-1234, FOR LOCATION OF EXISTING UTILITIES.
- PRIOR TO CONSTRUCTION, THE CONTRACTOR SHALL EXCAVATE AND VERIFY THE HORIZONTAL AND VERTICAL LOCATIONS OF ALL OBSTRUCTIONS. SHOULD A CONFLICT EXIST, THE CONTRACTOR SHALL NOTIFY THE ENGINEER OR SURVEYOR SO THAT THE CONFLICT CAN BE RESOLVED WITH MINIMUM DELAY.
- ALL UTILITIES AND UTILITY SERVICE LINES SHALL BE INSTALLED PRIOR TO PAVING.
- BACKFILL COMPACTION SHALL BE ACCORDING TO SPECIFIED STREET USE.
- TACK COAT REQUIREMENTS SHALL BE DETERMINED BY THE CITY ENGINEER.
- SIDEWALKS AND WHEELCHAIR RAMPS WITHIN THE CURB RETURNS SHALL BE CONSTRUCTED WHEREVER A NEW CURB OR CURB RETURN IS CONSTRUCTED.
- ALL STORM DRAINAGE FACILITIES SHALL BE COMPLETED PRIOR TO FINAL ACCEPTANCE.



### GENERAL NOTES

- CONTRACTOR SHALL COORDINATE THIS WORK WITH PRIVATE STORM DRAIN & SANITARY SEWER LINES CURRENTLY UNDER CONSTRUCTION.
- PROPOSED GAS LINE EXTENSION SHOWN FOR INFORMATION ONLY.
- CONTRACTOR MUST SUBMIT A CONSTRUCTION SIGNING & BARRICADING PLAN TO TRAFFIC ENGINEERING AND RECEIVE A BARRICADING PERMIT 48 HOURS PRIOR TO CONSTRUCTION.

### KEYED NOTES

- SAWCUT, REMOVE & REPLACE SIDEWALK AS REQUIRED PER STD. DWG. 2430.
- SAWCUT, REMOVE & REPLACE CURB & GUTTER AS REQUIRED PER STD. DWG. 2415 FOR STD. CURB & GUTTER.
- SAWCUT, REMOVE & REPLACE ASPHALT PAVING AS REQUIRED PER STD. DWG. 2465.
- 4' DIAMETER TYPE 'E' MANHOLE PER STD. DWG. 2102.
- SEE DETAIL ABOVE FOR DRAIN LINE CONNECTION TO EXISTING S/C STORM INLET. DRAIN LINE SIZE & SLOPE AND HGL FROM THE APPROVED GRADING & DRAINAGE PLAN FOR THE MARRIOTT HOTEL.

### LEGEND

- 36" SD EXT. STORM DRAIN W/SIZE
- 18" SD PROPOSED 18" STORM DRAIN
- EXT. SANITARY SEWER
- PROPOSED 8" SAS
- SDWK TO BE SAWCUT, REMOVED & REPLACED
- CURB & GUTTER TO BE SAWCUT, REMOVED & REPLACED
- ARTERIAL PAVEMENT TO BE SAWCUT, REMOVED & REPLACED
- EXT. GAS LINE
- PROPOSED GAS LINE

APPROVAL OF AS-BUILT DRAWINGS  
CITY OF ALBUQUERQUE  
DATE 3-25-89

1 2 3 4 5 6 7 8 9 10 11 12  
26 36840189

3/15/89  
3/15/89

CITY OF ALBUQUERQUE PUBLIC WORKS DEPARTMENT ENGINEERING GROUP			
TITLE MARRIOTT HOTEL YALE BLVD. & CENTRE AVE. UTILITY CONNECTIONS & DETAILS			
APPROVALS	ENGINEER	DATE	APPROVALS
D.R.C. Chair	3/15/89		ENGINEER
Trans. Dev	3/15/89		DATE
Utility Dev			
DRAWING NO. 3684		MAP NO. L-16	SHEET 1 OF 1