

CONSTRUCTION PLANS
FOR
**COMANCHE ROAD
PAVING & UTILITY
RECONSTRUCTION**

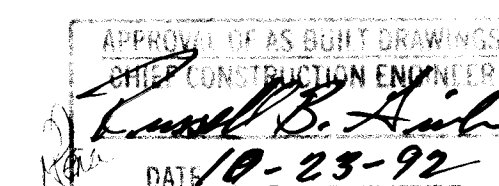


PUBLIC WORKS DEPARTMENT
CITY OF ALBUQUERQUE

INDEX TO DRAWINGS

SHEET NO.	TITLE
1	COVER SHEET
2	GENERAL NOTES, DETAILS, COMPOSITE UTILITY PLAN
3	STORM DRAINAGE
4	WATER AND SANITARY SEWER
5	PAVING AND STRIPING
6	TRAFFIC SIGNALS & CABLE RECONSTRUCTION
7	LOOP DETECTOR DETAILS
8	REGRADING--CREDIT UNION & GOODY'S
9	TRAFFIC CONTROL--JUAN TABO
10	TRAFFIC CONTROL--COMANCHE, PHASE 1 & 4
11	TRAFFIC CONTROL--COMANCHE, PHASE 2
12	TRAFFIC CONTROL--COMANCHE, PHASE 3

mike
then B. Arfman
or signed



26 3696.910192

REV.	SHEETS	CITY ENGR.	DATE	USER DEPT.	DATE	USER DEPT.	DATE
APPROVAL OF REVISIONS							

	Isaacson & Arfman, P.A. CONSULTING ENGINEERING ASSOCIATES Albuquerque, New Mexico	APPROVED FOR CONSTRUCTION <i>Isaacson & Arfman</i> 11/15/91
	PROJECT NO. 3696.91	SHEET 1 OF 12

GENERAL NOTES

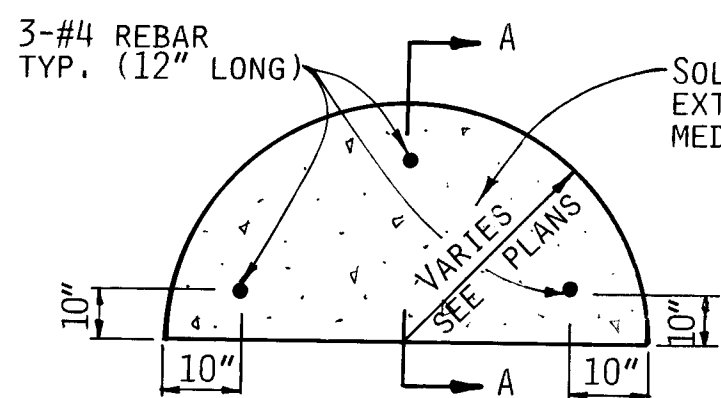
- ALL WORK DETAILED ON THESE PLANS TO BE PERFORMED UNDER CONTRACT SHALL, EXCEPT AS OTHERWISE STATED OR PROVIDED FOR HEREON, BE CONSTRUCTED IN ACCORDANCE WITH THE CITY OF ALBUQUERQUE STANDARD SPECIFICATIONS--PUBLIC WORKS CONSTRUCTION--1986.
- TWO (2) WORKING DAYS PRIOR TO ANY EXCAVATION, CONTRACTOR MUST CONTACT LINE LOCATING SERVICE, 260-1990, FOR LOCATION OF EXISTING UTILITIES.
- UTILITIES LOCATIONS AS SHOWN ON THESE DRAWINGS ARE APPROXIMATE. IT IS POSSIBLE THAT THE EXACT LOCATION OF LINES AND UTILITY CONNECTION POINTS IN THE IMMEDIATE VICINITY OF THE PROPOSED SITE MAY BE SLIGHTLY DIFFERENT FROM THE LOCATION SHOWN ON THESE DRAWINGS. PRIOR TO CONSTRUCTION, THE CONTRACTOR SHALL EXCAVATE AND VERIFY THE HORIZONTAL AND VERTICAL LOCATIONS OF ALL EXISTING UTILITIES. SHOULD A CONFLICT EXIST, THE CONTRACTOR SHALL NOTIFY THE ENGINEER SO THAT THE CONFLICT CAN BE RESOLVED WITH A MINIMUM AMOUNT OF DELAY.
- SHOULD A CONFLICT EXIST BETWEEN THESE PLANS AND ACTUAL FIELD CONDITIONS, THE CONTRACTOR SHALL PROMPTLY NOTIFY THE ENGINEER IN WRITING SO THAT THE CONFLICT CAN BE RESOLVED WITH A MINIMUM AMOUNT OF DELAY FOR ALL PARTIES.
- THE CONTRACTOR SHALL MAINTAIN ACCESS TO ADJACENT PROPERTIES DURING CONSTRUCTION.
- ALL WORK ON THIS PROJECT SHALL BE PERFORMED IN ACCORDANCE WITH APPLICABLE FEDERAL, STATE AND LOCAL LAWS, RULES, AND REGULATIONS CONCERNING CONSTRUCTION SAFETY AND HEALTH.
- SEE REVISED NOTE 7 FOLLOWING NOTE 15 BELOW.
- ALL UTILITIES AND UTILITY SERVICE LINES SHALL BE INSTALLED PRIOR TO PAVING.
- TACK COAT REQUIREMENTS SHALL BE DETERMINED BY THE CITY ENGINEER.
- IF CURB IS DEPRESSED FOR A DRIVEPAD OR A HANDICAP RAMP, THE DRIVEPAD OR RAMP SHALL BE CONSTRUCTED PRIOR TO ACCEPTANCE OF THE CURB AND GUTTER.
- ALL STATIONING SHALL BE BASED ON CONSTRUCTION CENTERLINE.
- WATER SYSTEMS SHALL BE CONTACTED @ 857-8200, 2 WEEKS PRIOR TO ANY SHUT-OFFS. ALL SHUT-OFFS SHALL BE AS PER SECTION 18 OF THE GENERAL CONDITIONS.
- CONTRACTOR SHALL SUPPORT ALL EXISTING, UNDERGROUND UTILITY LINES AND SERVICES WHICH BECOME EXPOSED DURING CONSTRUCTION. PAYMENT FOR SUPPORTING WORK OR REPLACING AT THE CONTRACTOR'S OPTION SHALL BE INCIDENTAL TO CONSTRUCTION.
- CONTRACTOR SHALL COORDINATE WITH UTILITY OWNERS FOR RE-LOCATION AND REGRADING OF EXISTING UNDERGROUND UTILITIES AND SUPPORT OF ALL OVERHEAD POWER AND LIGHT POLES NECESSARY TO ACCOMMODATE NEW CONSTRUCTION. ALL REQUIRED COORDINATION AND UTILITY RELOCATION, REGRADING AND POLE SUPPORTING SHALL BE INCIDENTAL COSTS ACCOMPLISHED AT NO COST TO THE OWNER.*
- EXISTING UTILITY LINE LOCATIONS ARE SHOWN IN AN APPROXIMATE MANNER ONLY, AND SUCH LINES MAY EXIST WHERE NONE ARE SHOWN. THE LOCATION OF ANY SUCH EXISTING LINES IS BASED UPON INFORMATION PROVIDED BY THE UTILITY COMPANY, THE OWNER, OR BY OTHERS. AND THE INFORMATION MAY BE INCOMPLETE OR MAY BE OBSOLETE BY THE TIME CONSTRUCTION COMMENCES.

THE ENGINEER HAS UNDERTAKEN NO FIELD VERIFICATION OF THE LOCATION, DEPTH, SIZE, OR TYPE OF EXISTING UNDERGROUND UTILITY LINES, MAKES NO REPRESENTATION PERTAINING THERETO, AND ASSUMES NO RESPONSIBILITY OR LIABILITY THEREFOR. THE CONTRACTOR SHALL INFORM ITSELF OF THE LOCATION OF ANY UTILITY LINE IN OR NEAR THE AREA OF THE WORK IN ADVANCE OF AND DURING EXCAVATION WORK. THE CONTRACTOR IS FULLY RESPONSIBLE FOR ANY AND ALL DAMAGE CAUSED BY ITS FAILURE TO LOCATE, IDENTIFY, AND PRESERVE ANY AND ALL EXISTING UTILITIES. THE CONTRACTOR SHALL COMPLY WITH STATE STATUTES, MUNICIPAL AND LOCAL ORDINANCES, RULES AND REGULATIONS PERTAINING TO THE LOCATION OF THESE LINES AND FACILITIES, IN PLANNING AND CONDUCTING EXCAVATION, WHETHER BY CALLING OR NOTIFYING THE UTILITIES, COMPLYING WITH "BLUE STAKES" PROCEDURES, OR OTHERWISE.

ALL STREET STRIPING ALTERED OR DESTROYED SHALL BE REPLACED BY THE CONTRACTOR TO EXISTING PATTERNS OR AS INDICATED BY THIS PLAN SET.

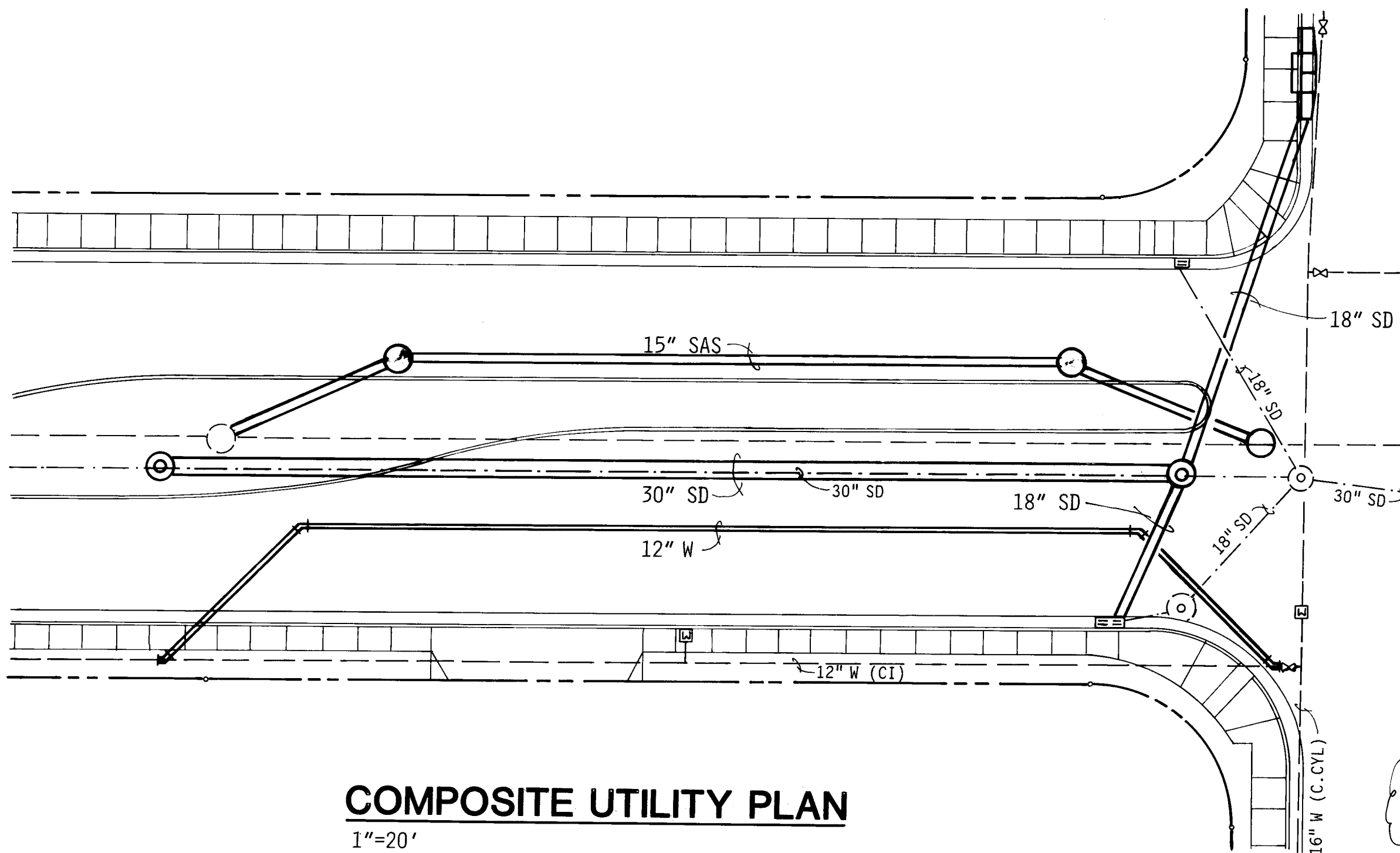
- VIBRATORY COMPACTION EQUIPMENT IS PROHIBITED ON THIS PROJECT DUE TO THE SETTLEMENT POTENTIAL OF ADJACENT BUILDINGS.

*EXCEPT FOR RELOCATION OF POLE AND GUY AT NW CORNER OF COMANCHE & JUAN TABO WHICH IS RELOCATED AT PNM'S COST. (SEE NOTE 3, SHEET 5.)



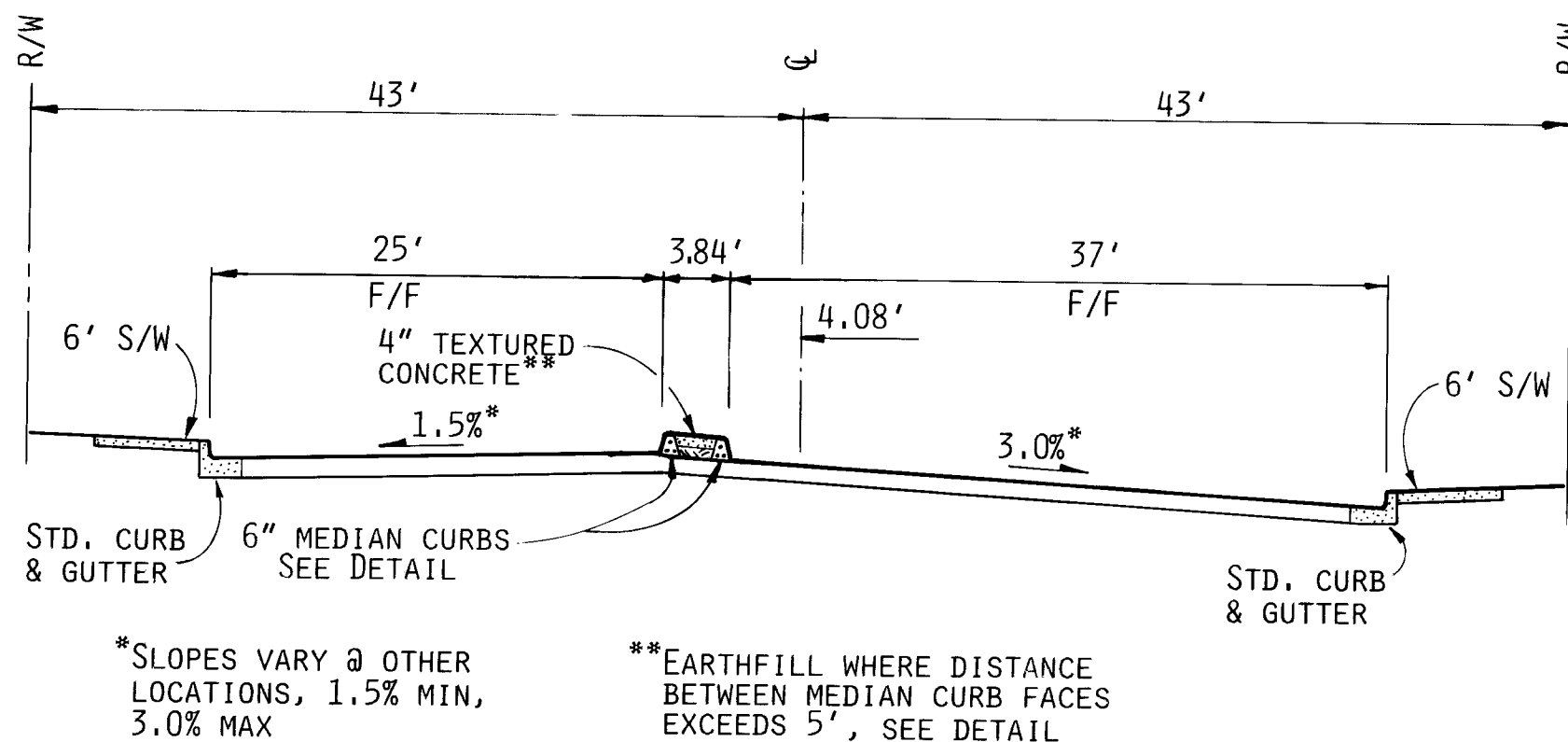
TYPICAL MEDIAN NOSE TREATMENT
AT EXTRUDED/BONDED MEDIAN CURB

NO SCALE



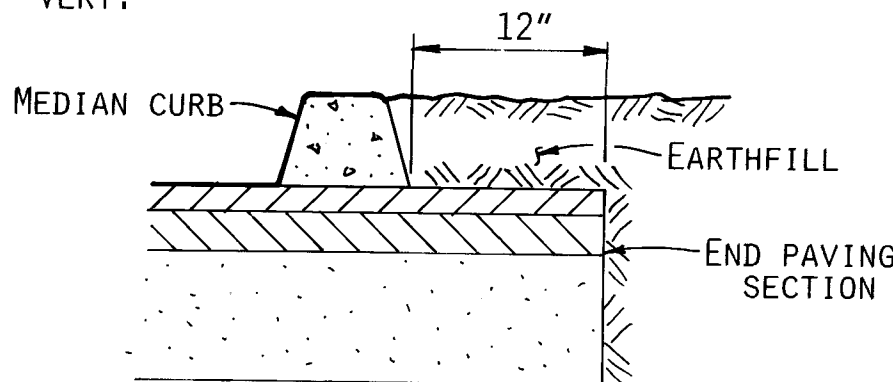
COMPOSITE UTILITY PLAN

1"=20'



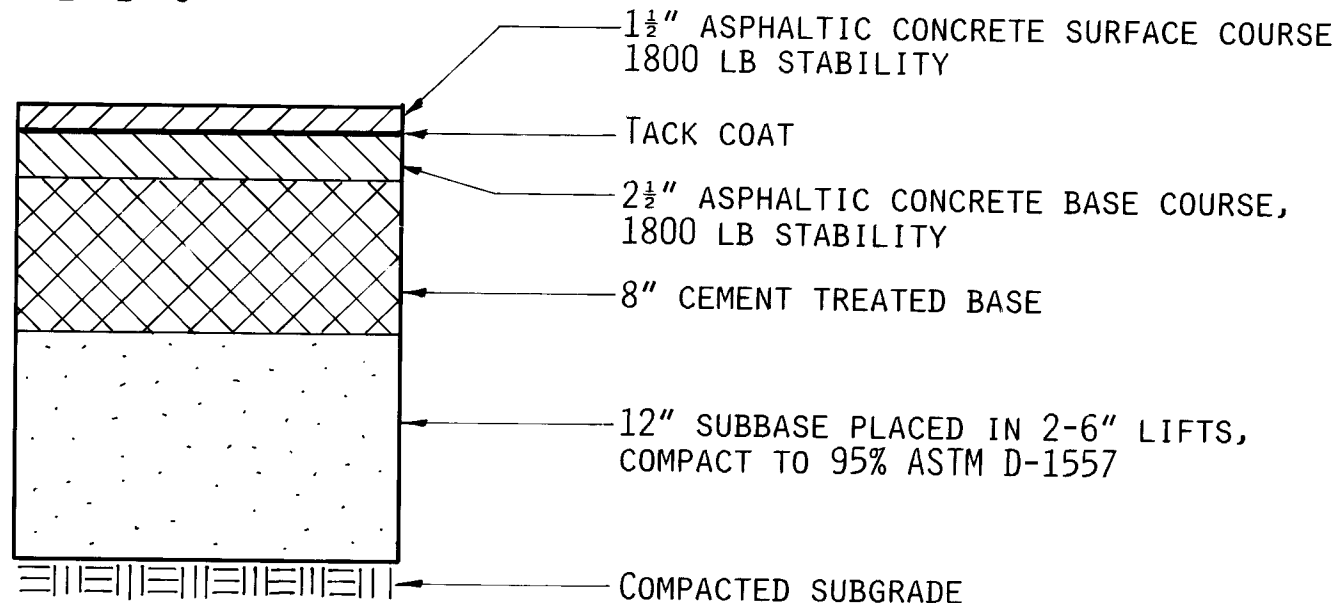
STREET SECTION - Sta. 9+50

1"=10' HOR.
1"=5' VERT.

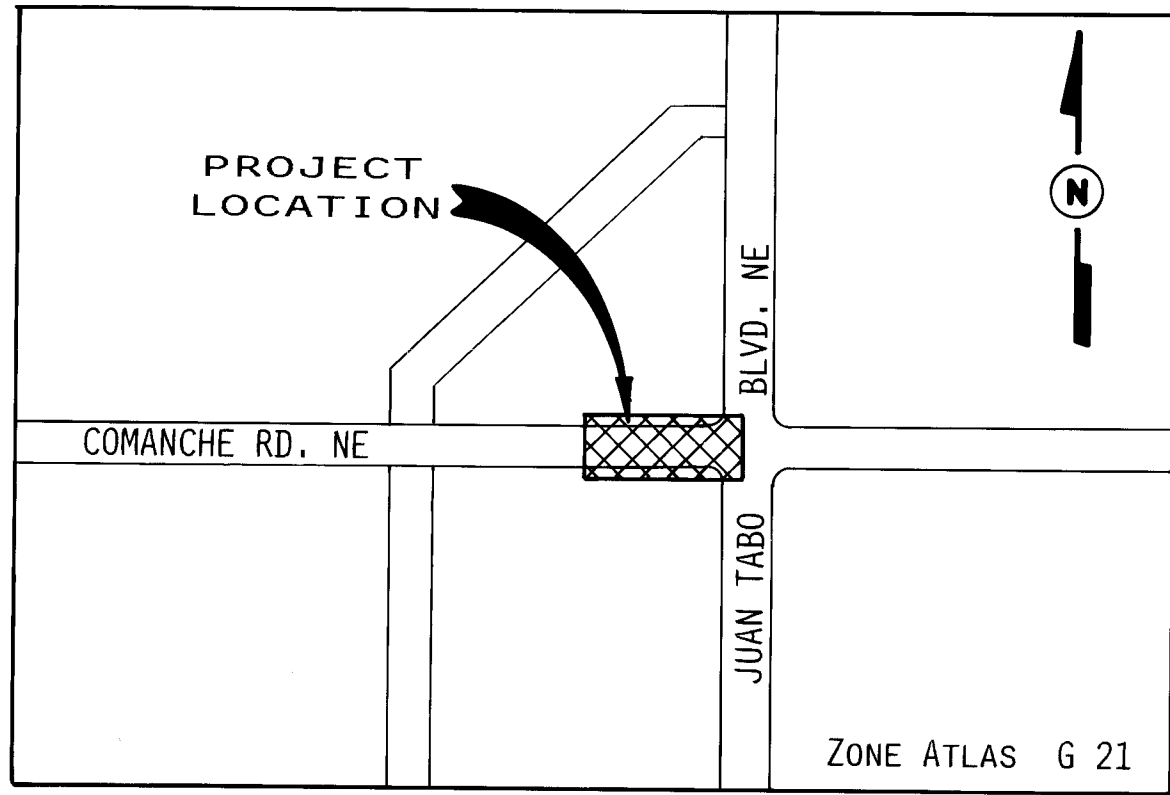


MEDIAN EXCEEDING 5' F/F WIDTH

1"=1'-0"



PAVEMENT SECTION

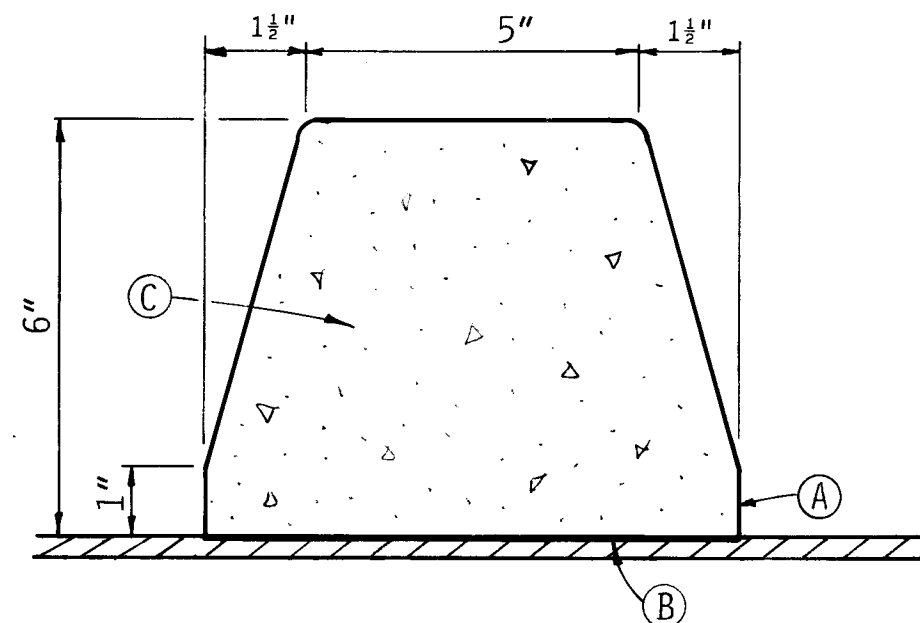


VICINITY MAP
NO SCALE

KEYED NOTES

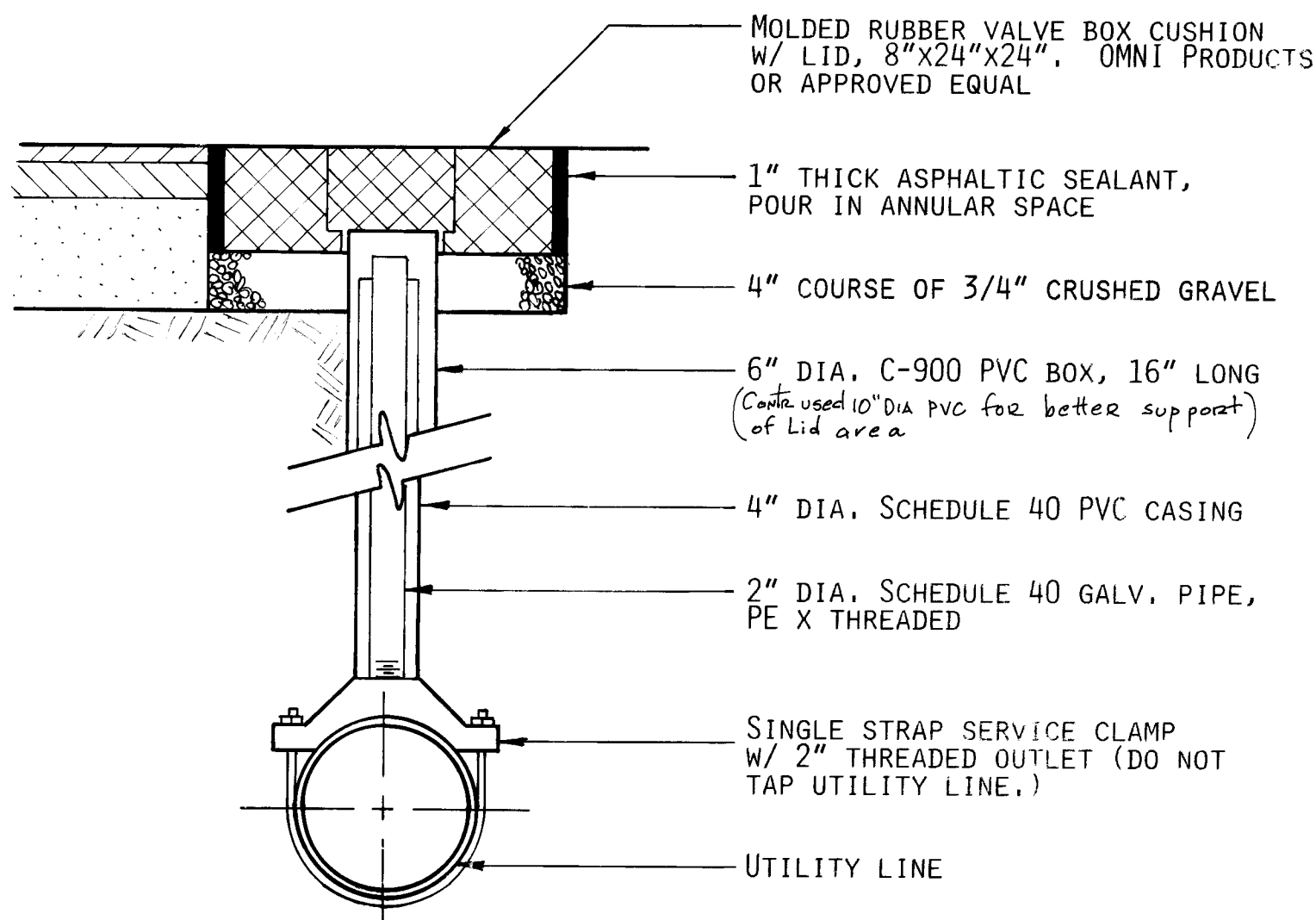
- Seal surfaces with trowel prior to curing.
- CSS 1 Bitumels on asphaltic pavement epoxy resin on concrete pavement (Probond 820 Series or approved equal).
- Extruded concrete curb per COA Standard Spec. 101 & 340 with following exceptions:
 - 15 # per CY of polypropylene, collated fibrillated fibers (fiber mesh or approved equal)
 - Non-chloride retarder per manufacturers recommendation
- Cold joints shall be installed every 15 lineal feet.

Conts. used d.f.c. Deck-o-weld Adhesive Boudes in lane



EXTRUDED/BONDED
CONCRETE MEDIAN CURB

NO SCALE



TYPICAL PIPE SETTLEMENT GAUGE INSTALLATION

N.T.S.

PAY ITEM CLARIFICATION FOR GRADING,
SUBGRADE PREPARATION, AND BORROW

WORK ITEM	APPLICABLE BID ITEM			APPROXIMATE BORROW REQUIRED (CY)
	GRADING	SUBGRADE PREP.	OTHER	
DETOUR MEDIANS	2	5	—	*
SIDEWALKS, DRIVEPADS & STD. CURB & GUTTER	—	—	13,14,15	60
COMANCHE ROADWAY	3	4	—	360
GOODY'S PARKING LOT	3	5	—	10
SANDIA & GOODY'S LOT GRADING	1	—	—	90

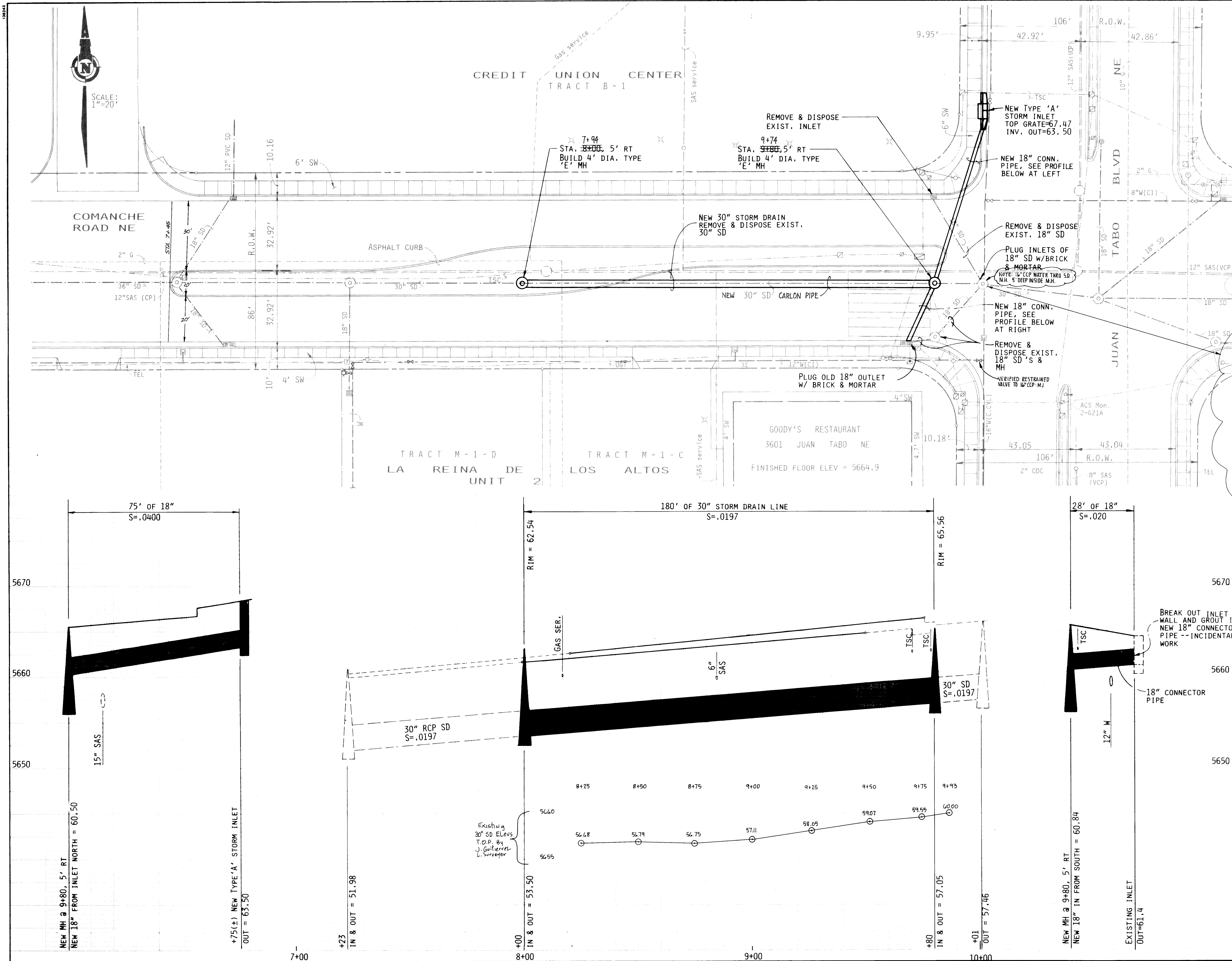
*EXCAVATION 280 CY, FILL 190 CY

NOTES:

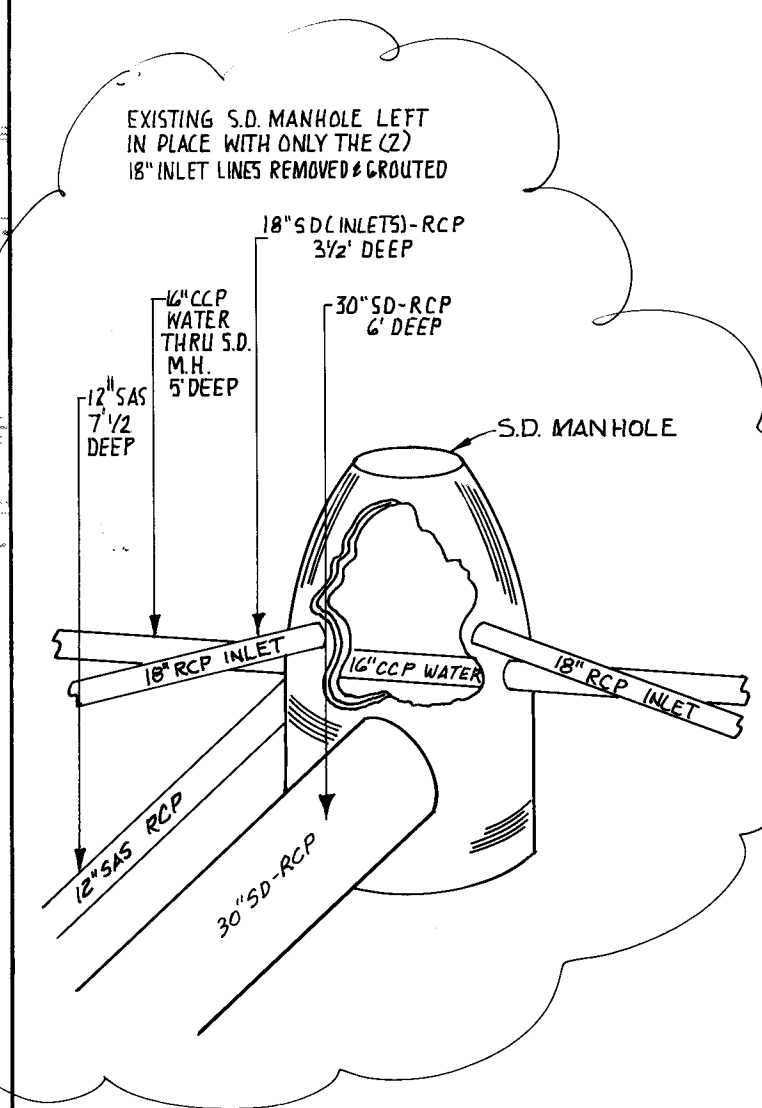
- EARTHWORK QUANTITIES SHOWN ARE FOR INFORMATIONAL PURPOSES ONLY. BIDDERS ARE RESPONSIBLE FOR CONFIRMING ALL QUANTITIES FOR BIDDING.
- NO SEPARATE PAYMENT WILL BE MADE FOR BORROW, HAULING, ROUGH GRADING, AND COMPACTION OF EARTHFILL. PAYMENT FOR THIS WORK WILL BE MADE UNDER THE APPLICABLE GRADING ITEMS FOR THE WORK ITEMS INVOLVED EXCEPT FOR SIDEWALKS, DRIVEPADS, AND STANDARD CURB & GUTTER PAY ITEMS WHICH INCLUDES ALL COSTS FOR BORROW, HAULING, COMPACTION, AND GRADING.

26 3696.910292

CITY OF ALBUQUERQUE PUBLIC WORKS DEPARTMENT ENGINEERING GROUP					
TITLE: Comanche Road Paving & Utility Reconstruction GENERAL NOTES & DETAILS					
APPROVALS	ENGINEER	DATE	APPROVALS	ENGINEER	DATE
D.R.C. Chair	<i>[Signature]</i>	11-15-91	Water	<i>[Signature]</i>	11-13-91
Trans. Dev.	<i>[Signature]</i>	11-13-91	Waste Water	<i>[Signature]</i>	
Hydrology	<i>[Signature]</i>	11-12-91			
PROJECT NO. 3696.91		MAP NO. G-21		SHEET 2 OF 2	



- CONSTRUCTION NOTES**
1. PIPE BEDDING SHALL BE TYPE 'C'.
 2. ALL NEW STORM DRAIN MAINS AND CONNECTOR PIPES SHALL BE CONSTRUCTED OF PVC OR PE PLASTIC MATERIALS AS SPECIFIED IN THE SUPPLEMENTAL TECHNICAL SPECIFICATIONS AND SHALL BE PRESSURE TESTED TO 4 PSI. TESTING PROCEDURES AND ALLOWABLE LEAKAGE SHALL COMPLY WITH SECTION 901.7.4 OF THE TECHNICAL SPECIFICATIONS.



- LEGEND OF EXISTING IMPROVEMENTS**
- MONITORING STATIONS
 - POWER POLE
 - POWER & LIGHT POLE
 - TRAFFIC SIGNAL STANDARD
 - GUY
 - TRAFFIC SIGNAL BOX
 - TELEPHONE PULL BOX
 - WATER METER BOX
 - ELECTRIC METER
 - CLEANOUT
 - TRAFFIC SIGNAL CONDUIT (2" & 3" PVC)

26 3696.910392

CITY OF ALBUQUERQUE
PUBLIC WORKS DEPARTMENT
ENGINEERING GROUP

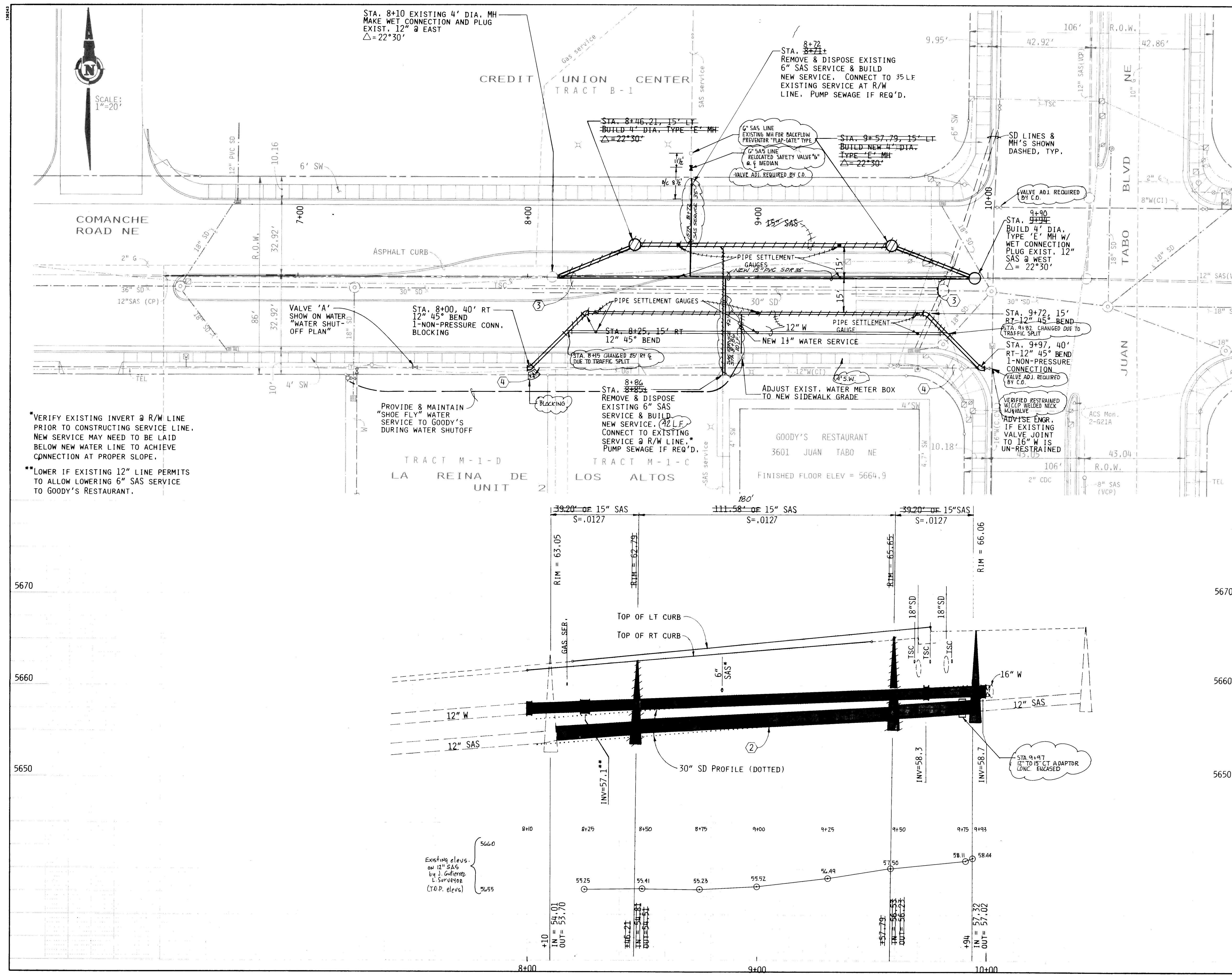
TITLE: Comanche Road Paving & Utility Reconstruction

STORM DRAINAGE

APPROVALS	ENGINEER	DATE	APPROVALS	ENGINEER	DATE
D.R.C. Chair	Rogers	11-15-91	Water	McClure	11-15-91
Trans. Dev	Rogers	11-15-91	Wastewater	McClure	11-15-91
Hydrology	Rogers	11-15-91			

PROJECT NO. 3696.91 MAP NO. Q-21 SHEET 3 OF 12

AS BUILT INFORMATION		BENCH MARKS		SURVEY INFORMATION		ENGINEER'S SEAL		REVISIONS		DESIGN	
CONTRACTOR	Surfbase Mechanical Corp.	ACS MONUMENT	"2-G21A" NMSF CENTRAL ZONE	DATE	8/91			NO.	1	DESIGNED BY	T. Izazola
WORK	BY: J. Gutierrez	Y	1,500,252.92; X = 420,717.75	BY	J. GUTIERREZ			DATE	8-91	DRAWN BY	M. Vazda
INSPECTION	BY: J. Gutierrez	LOCATED IN THE NORTH END OF THE MEDIAN ON						REMARKS		CHECKED BY	T. Izazola
ACCEPTANCE	BY: J. Gutierrez	JUAN TABO.						NO.		DATE	8-91
VERIFICATION	BY: J. Gutierrez	ELEVATION = 5666.13						DATE	8-91		

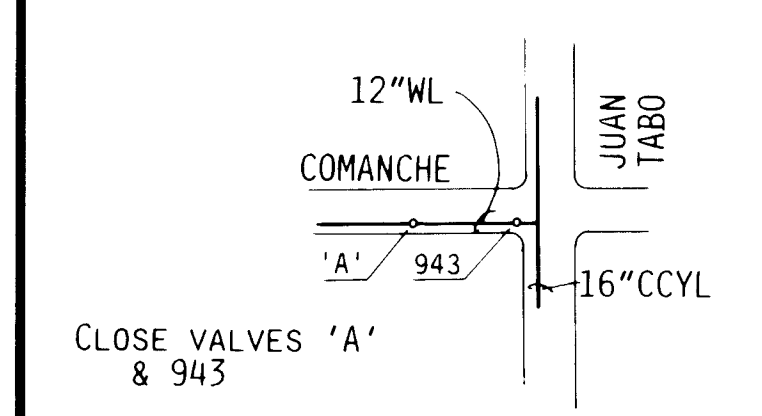


CONSTRUCTION NOTES

- CONTRACTOR TO INSTALL PIPE SETTLEMENT GAUGES AS SHOWN AND PROVIDE FINISHED ELEVATIONS AT COMPLETION OF WORK. SURVEY COSTS SHALL BE INCIDENTAL TO CONSTRUCTION SURVEYING.
- PIPE BEDDING SHALL BE TYPE 'C'.
- EXISTING SAS TO BE REMOVED AFTER NEW LINE IS PLACED IN SERVICE.
- EXISTING WATERLINE TO BE ABANDONED IN PLACE AND FILLED WITH GROUT. SEE SPECIFICATIONS FOR DETAILS.
- CONTRACTOR SHALL MAINTAIN CONTINUOUS WATER AND SEWER SERVICE TO GOODY'S RESTAURANT AND SANDIA CREDIT UNION.
- ALL NEW WATERLINES SHALL HAVE FLEXIBLE RESTRAINT JOINTS, SEE SPEC'S.

WATER SHUTOFF REQUIREMENTS

- CONTRACTOR SHALL NOTIFY WATER SYSTEM DIVISION (857-8200) 3 WORKING DAYS PRIOR TO DESIRED SHUTOFF.
- VALVES ON CITY WATER SYSTEM MAY ONLY BE OPERATED BY WATER SYSTEM CREWS.
- COORDINATE SCHEDULE FOR WATER SHUTOFF TO MINIMIZE DOWN TIME TO GOODY'S RESTAURANT.



WATER SHUTOFF PLAN
1"=400'

LEGEND OF EXISTING IMPROVEMENTS

- MONITORING STATIONS
- POWER POLE
- POWER & LIGHT POLE
- TRAFFIC SIGNAL STANDARD
- GUY
- TRAFFIC SIGNAL BOX
- TELEPHONE PULL BOX
- WATER METER BOX
- ELECTRIC METER
- CLEANOUT
- TRAFFIC SIGNAL CONDUIT (2" & 3" PVC)

26 3696.910492

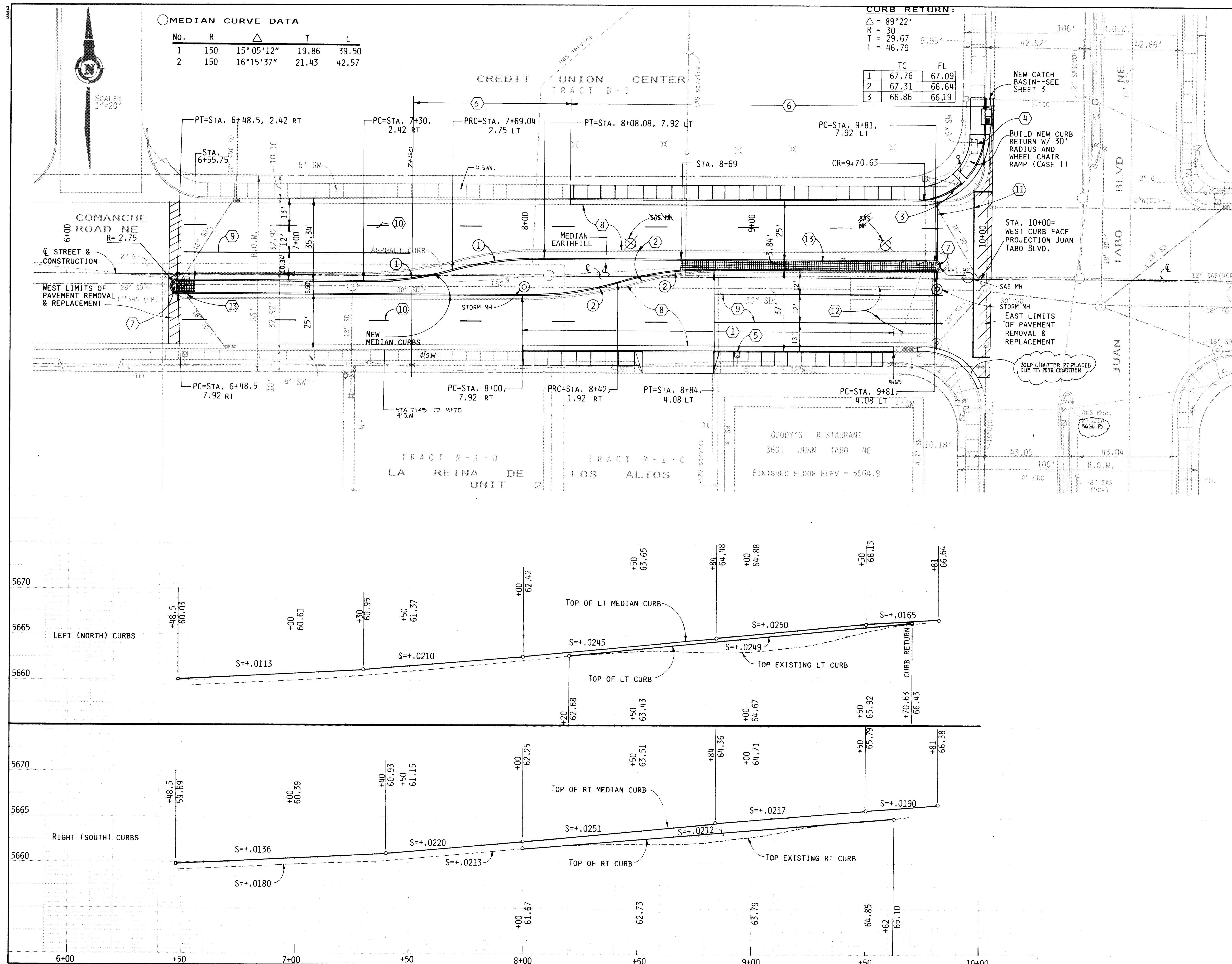
CITY OF ALBUQUERQUE
PUBLIC WORKS DEPARTMENT
ENGINEERING GROUP

TITLE: **Comanche Road Paving & Utility Reconstruction**

WATER & SANITARY SEWER

APPROVALS	ENGINEER	DATE	APPROVALS	ENGINEER	DATE
D.R.C. Chair	<i>[Signature]</i>	11-15-91	Water	<i>[Signature]</i>	11-15-91
Trans Dev	<i>[Signature]</i>	11-15-91	Wastewater	<i>[Signature]</i>	
Hydrology	<i>[Signature]</i>				

AS BUILT INFORMATION		BENCH MARKS		SURVEY INFORMATION		ENGINEER'S SEAL	
CONTRACTOR	San Jose, Mech & Utility, Inc.	ACCS MONUMENT	"2-G21A" WNSP CENTRAL ZONE	NO.	1		11/19/91
WORK	Surveyed by Guy Harvey, Surveying, Inc.	DATE	8/91	BY	J. GUTIERREZ		
FIELD	ACCEPTANCE BY Guy Harvey, Surveying, Inc.	DATE	7/92	NO.		REVISIONS	DESIGN
DRAWINGS	DATE	7/92	NO.				
CORRECTIONS	DATE		NO.			NO.	DATE
RECORDED BY						NO.	DATE



MEDIAN CURVE DATA

No.	R	Δ	T	L
1	150	15°05'12"	19.86	39.50
2	150	16°15'37"	21.43	42.57

CURB RETURN:

Δ	= 89°22'
R	= 30
T	= 29.67
L	= 46.79

	TC	FL
1	67.76	67.09
2	67.31	66.64
3	66.86	66.19

- KEYED NOTES
- Sta. 8+00 to 9+62: Remove 162 LF std. & depressed curb & gutter. Remove 92 SY sidewalk & driveway. Build 126 LF std. curb & gutter and 36 LF driveway gutter (Sta. 8+50 to 8+86). Build 732 SF sidewalk (6' wide) and build 323 SF driveway (6' wide). PERMETER USE 4" WIDE S.W.
 - Remove & dispose 692 LF asphalt curb.
 - Power pole to be relocated by PNM prior to construction.
 - Contractor to remove, store, and reset bus bench.
 - Adjust existing water meter to new sidewalk grade. Protect during construction.
 - Sta. 8+20 to end shown: Remove 152 SY sidewalk, remove 218 LF std. curb & gutter, build 1260 SF sidewalk (6' wide), and build 200 LF std. curb & gutter.
 - Concrete median nose paving, See details Sheet 2.
 - Remove existing pavement and replace. See pavement section Sheet 2.
 - 100' of 4" wide solid white pavement stripe.
 - 10' long sections of 4" wide pavement stripes @ 40' centers, typ.
 - Intersection crosswalk lines, 12" solid white.
 - Traffic Loop Detectors. Contact Kevin Broderick Traffic Engineering (291-6220), 2 days prior to traffic detouring and 2 days prior to removing existing traffic loop detectors for traffic signal coordination. See Sheet 7 for new loop detector details.
 - 4" textured concrete color: brick red, Davis Colors or approved equal.
- TRAFFIC STRIPING NOTES
- Materials for pavement markings shall be adhesive plastic marking tape and conform to Section 704 of the Standard Specifications for Road & Bridge Construction of the New Mexico State Highway Dept., 1984 Edition.
 - Striping standards shall conform to MUTCD requirements.

- GENERAL NOTES
- All dimensioning to curbs is measured to face of curb (traffic side).
 - Contractor to call Traffic Engineering (857-8011) 2 days prior to beginning work.

- LEGEND OF EXISTING IMPROVEMENTS
- MONITORING STATIONS
 - POWER POLE
 - POWER & LIGHT POLE
 - TRAFFIC SIGNAL STANDARD
 - GUY
 - TRAFFIC SIGNAL BOX
 - TELEPHONE PULL BOX
 - WATER METER BOX
 - ELECTRIC METER
 - CLEANOUT
 - TRAFFIC SIGNAL CONDUIT (2" & 3" PVC)

26 2696.910592

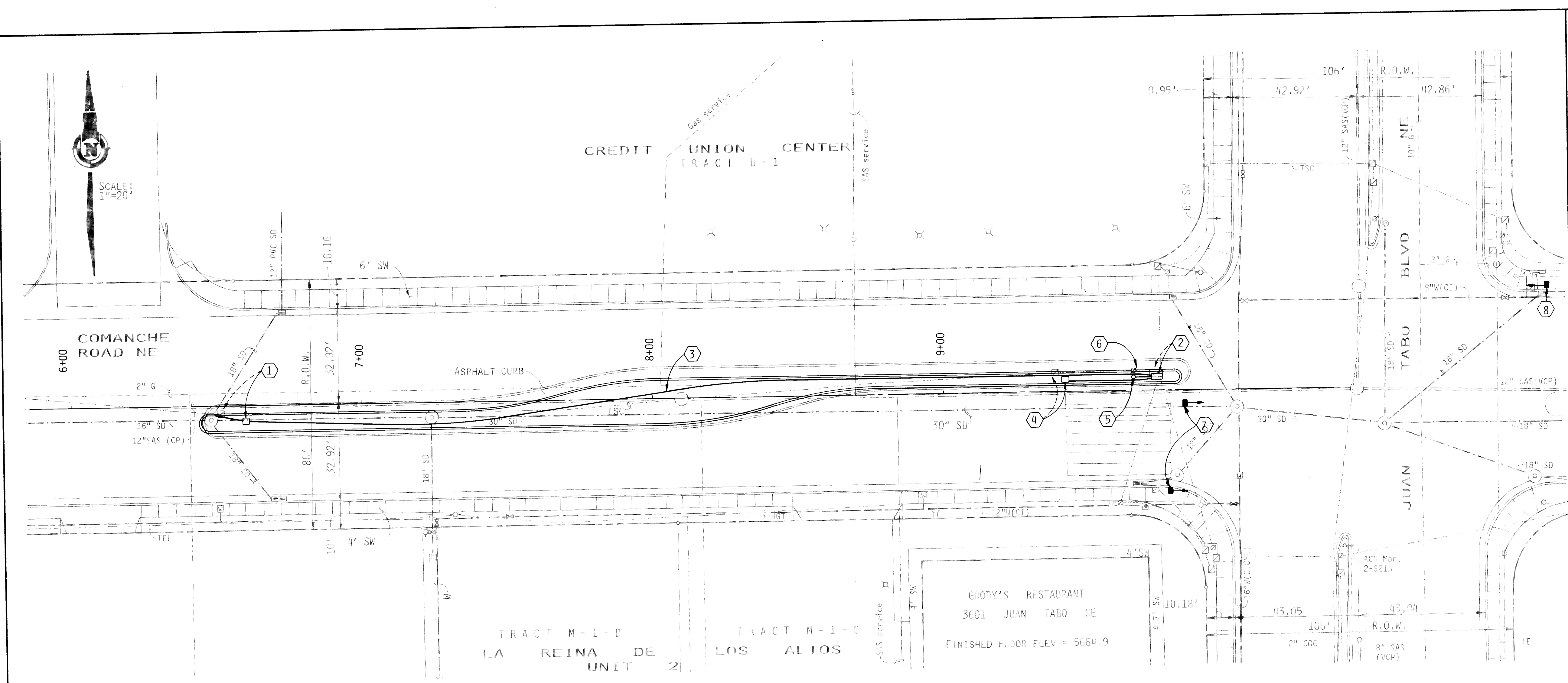
CITY OF ALBUQUERQUE
PUBLIC WORKS DEPARTMENT
ENGINEERING GROUP

TITLE: **Comanche Road Paving & Utility Reconstruction**
PAVING & STRIPING PLAN

APPROVALS	ENGINEER	DATE	APPROVALS	ENGINEER	DATE
DRC Chair	<i>[Signature]</i>	11-15-91	Water	<i>[Signature]</i>	11-15-91
Trans Dev	<i>[Signature]</i>	11-15-91	Wastewater	<i>[Signature]</i>	"
Hydrology	<i>[Signature]</i>	"			"

PROJECT NO. **3696.91** MAP NO. **Q-21** SHEET **5** OF **12**

AS BUILT INFORMATION		BENCH MARKS		SURVEY INFORMATION		ENGINEER'S SEAL		REVISIONS		DESIGN	
NO.	DATE	NO.	DATE	NO.	DATE	NO.	DATE	NO.	DATE	NO.	DATE
1	8/91	1	8/91	1	8/91			1	8/91	1	8/91
CONTRACTOR: Sundance Mechanical Corp.		ACCS MONUMENT "2-G21A" WNSP CENTRAL ZONE		FIELD NOTES		ENGINEER'S SEAL		REVISIONS		DESIGN	
WORK STARTED BY: J. Gutierrez		Y=1,500,252.92, X=420,717.75		NO.		[Seal]		REVISIONS		DESIGN	
DATE: 8/91		LOCATED IN THE NORTH END OF THE MEDIAN ON		BY				REVISIONS		DESIGN	
FIELD: J. GUTIERREZ		JUAN TABO, SOUTH OF THE INTERSECTION OF		NO.				REVISIONS		DESIGN	
DATE: 8/91		COMANCHE AND JUAN TABO.		DATE				REVISIONS		DESIGN	
CORRECTED BY: J. GUTIERREZ		ELEV. -5666.13		DATE				REVISIONS		DESIGN	
MICRO-FILM INFORMATION				DATE				REVISIONS		DESIGN	
RECORDED BY				DATE				REVISIONS		DESIGN	
NO.				DATE				REVISIONS		DESIGN	

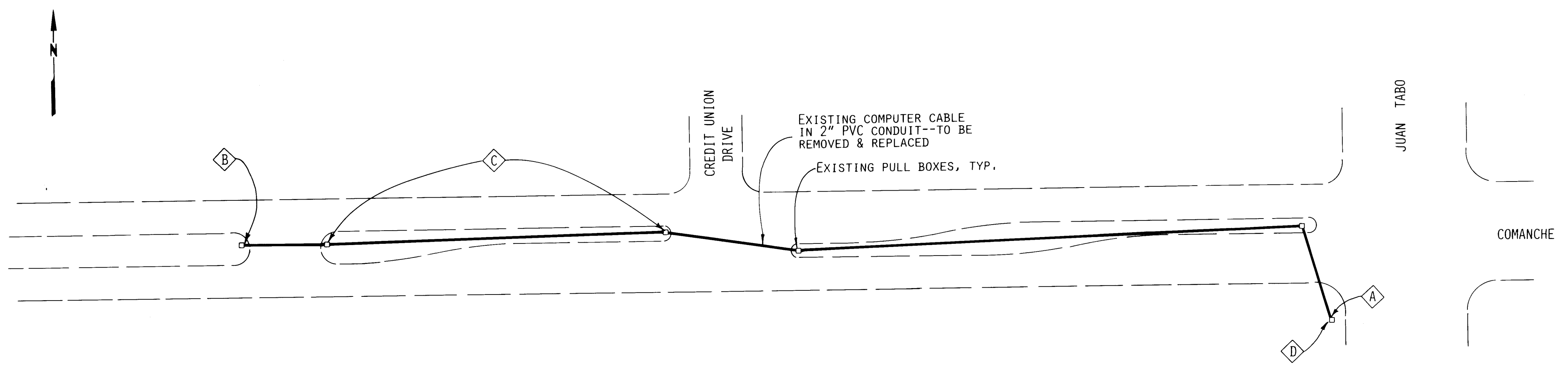


COMPUTER CABLE NOTES

- A CONTRACTOR TO NOTIFY TRAFFIC OPERATIONS (EDWARD TOLEDO @ 857-8000) OR KEVIN BRODERICK @ 291-6220) TO COORDINATE DISCONNECTION OF INTER-CONNECT COMPUTER CABLE AT EXISTING SPLICING CABINET. DISCONNECTION BY CITY FORCES.
- B CONTRACTOR TO PULL EXISTING COMPUTER CABLE FROM LOCATION @ NOTE (A) TO THIS LOCATION AND STORE BY COILING CABLE, WRAPPING IN PLASTIC SHEETING AND BURYING IN MEDIAN FOR SECURITY.
- C CONTRACTOR TO REMOVE EXISTING PULL BOXES AND CAP CONDUIT FOR MEDIAN REMOVAL AND PAVING FOR TRAFFIC DETOURING. REPLACE PULL BOXES TO STANDARD CITY DETAIL AFTER RESTORATION OF MEDIAN.
- D AT COMPLETION OF CONSTRUCTION, CONTRACTOR SHALL REINSTALL COMPUTER CABLE IN CONDUIT FROM NOTE (B) LOCATION TO SPLICING CABINET AND CALL TRAFFIC ENGINEERING FOR RE-CONNECTION AT CABINET.

TRAFFIC SIGNAL & COMPUTER CABLE CONDUIT RELOCATIONS

1"=20'



COMPUTER CABLE REMOVAL/REPLACEMENT PLANS

1"=50'

NOTE: THE CONTRACTOR IS FULLY RESPONSIBLE FOR THE CARE, PROTECTION, AND RESTORATION OF THE COMPUTER CABLE SYSTEM. THIS CABLE MAY NOT BE SPLICED OR REPAIRED. SHOULD THE CABLE BE DAMAGED FOR ANY REASON, THE CONTRACTOR WILL BE REQUIRED TO REPLACE THE ENTIRE CABLE FROM JUAN TABO BLVD. TO MORRIS STREET AT HIS OWN EXPENSE.

- KEYED NOTES**
- RELOCATE EXISTING PULL BOX TO STA. 6+60, 5.17' RT. TOP BOX = 5660.00. REMOVE ELBOW AT EXISTING BOX AND EXTEND NEW 2" PVC CONDUIT TO RELOCATED BOX WITH ELBOW AND RISER PER STANDARD DETAIL.
 - RELOCATE EXISTING PULL BOX TO STA. 9+74, 6.00' LT. TOP BOX = 5666.39. PROVIDE NEW PVC CONDUIT EXTENSIONS AND RISERS TO RELOCATED BOX USING SAME DIAMETER SIZES AS EXISTING.
 - REMOVE EXISTING 2" CONDUIT AND LAY NEW 2" PVC CONDUIT BETWEEN LOCATIONS AT NOTES ① & ②.
 - RELOCATE EXISTING PULL BOX TO STA. 9+42, 5.00' LT. TOP BOX = 5665.69. INSTALL 30" OF 2" PVC CONDUIT TO RELOCATED BOX @ STA. 9+74.
 - BUILD NEW PEDESTAL FOUNDATION PER STD. DRAWING NO. 2525 @ STA. 9+66, 6.00' LT. TOP OF FOUNDATION = 5666.24. INSTALL 10' OF NEW 2" PVC CONDUIT TO RELOCATED BOX @ STA. 9+74.
 - CONTRACTOR TO CONTACT TRAFFIC ENGINEERING (EDWARD TOLEDO @ 857-8000 OR KEVIN BRODERICK @ 291-6220) TO COORDINATE TRAFFIC SIGNAL STANDARD WORK. CITY TO REMOVE EXISTING STANDARD AND RESET ON NEW PEDESTAL FOUNDATION CONSTRUCTED BY CONTRACTOR.
 - INSTALL TEMPORARY SIGNAL PEDESTAL WITH ABOVE GROUND FOUNDATION AND 3-SECTION 12" SIGNAL HEAD. CONNECT TO EXISTING CABLE WITH 7-CONDUCTOR CABLE INSTALLED ON GROUND SURFACE IN 2" PVC CONDUIT. (PHASE 2 ONLY)
 - INSTALL TEMPORARY SIGNAL PEDESTAL WITH ABOVE GROUND FOUNDATION AND 3-SECTION 12" SIGNAL HEAD. CONNECT TO EXISTING CABLE WITH 7-CONDUCTOR CABLE INSTALLED ON GROUND SURFACE IN 2" PVC (PHASE 3 ONLY).

- GENERAL NOTES**
- ALL RELOCATED PULL BOXES TO BE CONSTRUCTED WITH CONCRETE COLLARS PER CURRENT CITY STANDARD DETAILS.
 - CONTRACTOR TO REMOVE AND DISPOSE OF ALL CONDUIT ABANDONED BY THIS PROJECT.
 - CONTRACTOR TO REMOVE ALL SIGNAL WIRE DISCONNECTED BY THE CITY AND INSTALL AND CONNECT NEW SIGNAL WIRES.

- LEGEND OF EXISTING IMPROVEMENTS**
- MONITORING STATIONS
 - POWER POLE
 - POWER & LIGHT POLE
 - TRAFFIC SIGNAL STANDARD
 - GUY
 - TRAFFIC SIGNAL BOX
 - TELEPHONE PULL BOX
 - WATER METER BOX
 - ELECTRIC METER
 - CLEANOUT
 - TRAFFIC SIGNAL CONDUIT (2" & 3" PVC)

26 2696.910692

CITY OF ALBUQUERQUE
PUBLIC WORKS DEPARTMENT
ENGINEERING GROUP

**TITLE: Comanche Road Paving & Utility Reconstruction
TRAFFIC SIGNALS & CABLE RECONSTRUCTION**

APPROVALS	ENGINEER	DATE	APPROVALS	ENGINEER	DATE
D.R.C. Chair	[Signature]	11-15-91	Water	[Signature]	11-15-91
Trans. Dev.	[Signature]	11-15-91	Waste Water	[Signature]	11-15-91
Hydrology	[Signature]	11-15-91			
Traffic	[Signature]	11-15-91			

PROJECT NO. 3696.91 MAP NO. G-21 SHEET 6 OF 12

AS BUILT INFORMATION

CONTRACTOR: [Signature]
DATE: 11/15/91
CHECKED BY: [Signature]
DATE: 11/15/91

BENCH MARKS

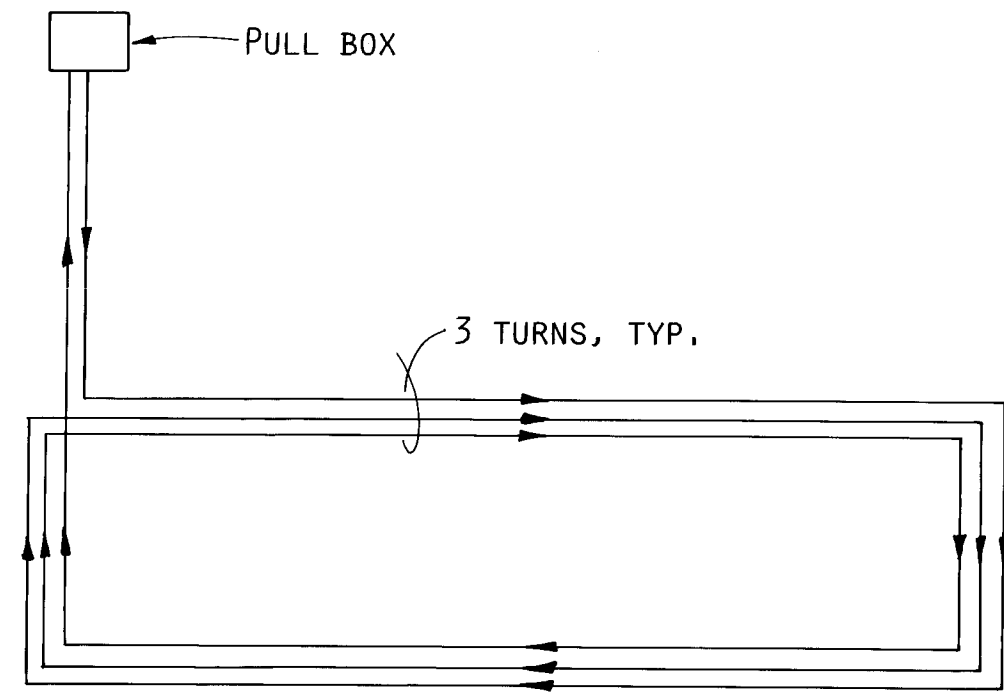
ACS MONUMENT "2-621A" MSP CENTRAL ZONE
Y=1,500,252.92, X=420,717.75
LOCATED IN THE NORTH END OF THE MEDIAN ON JUAN TABO, SOUTH OF THE INTERSECTION OF COMANCHE AND JUAN TABO.
ELEV.=5666.13

SURVEY INFORMATION

FIELD NOTES
NO. 1
BY J. GUTIERREZ
DATE 8/91

ENGINEER'S SEAL

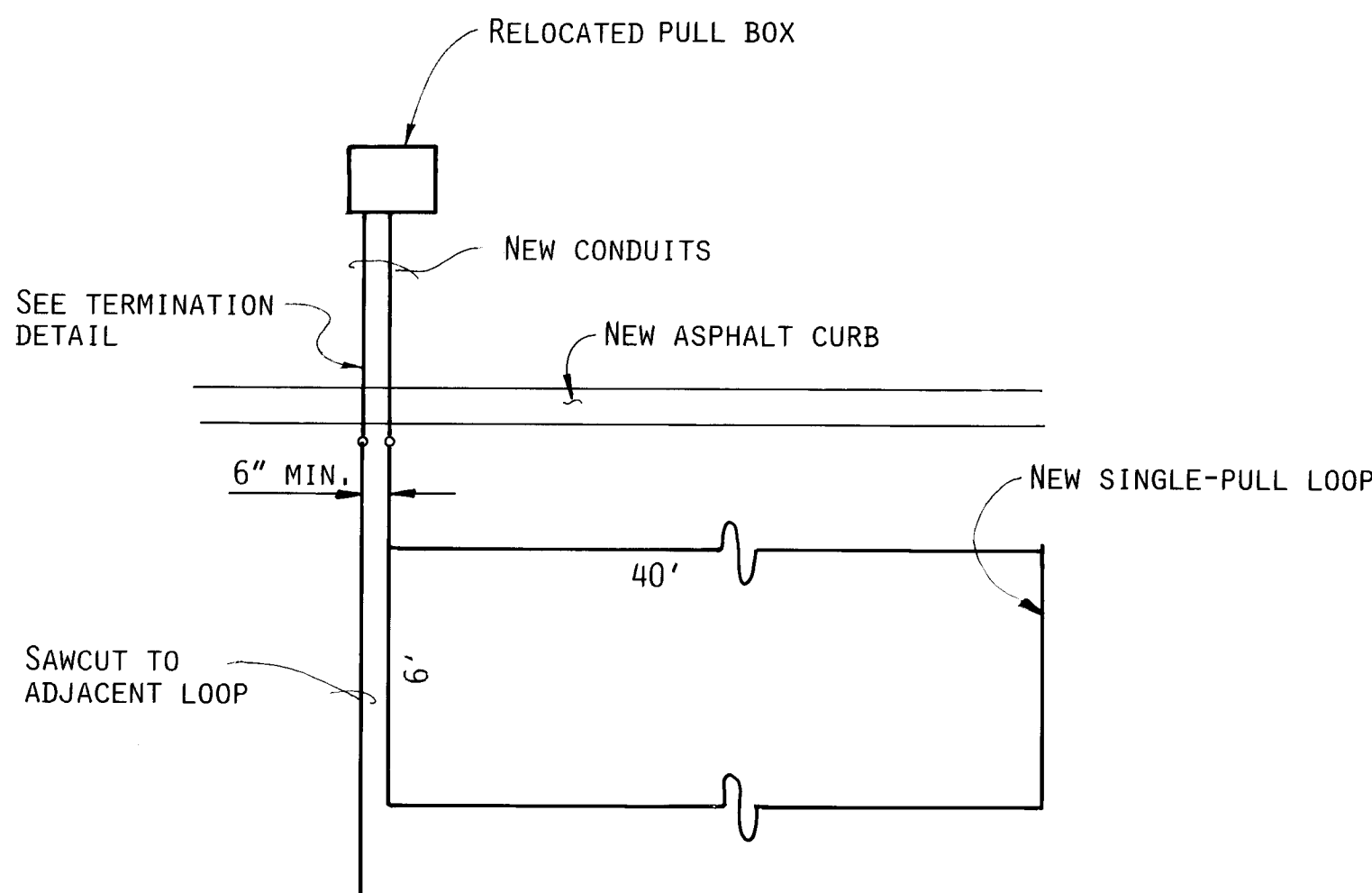
NO. [] BY []
REMARKS []
DESIGN []
DATE []
DESIGNED BY []
DRAWN BY []
CHECKED BY []



NOTE: ALL WIRES MUST BE WOUND IN THE DIRECTION SHOWN.

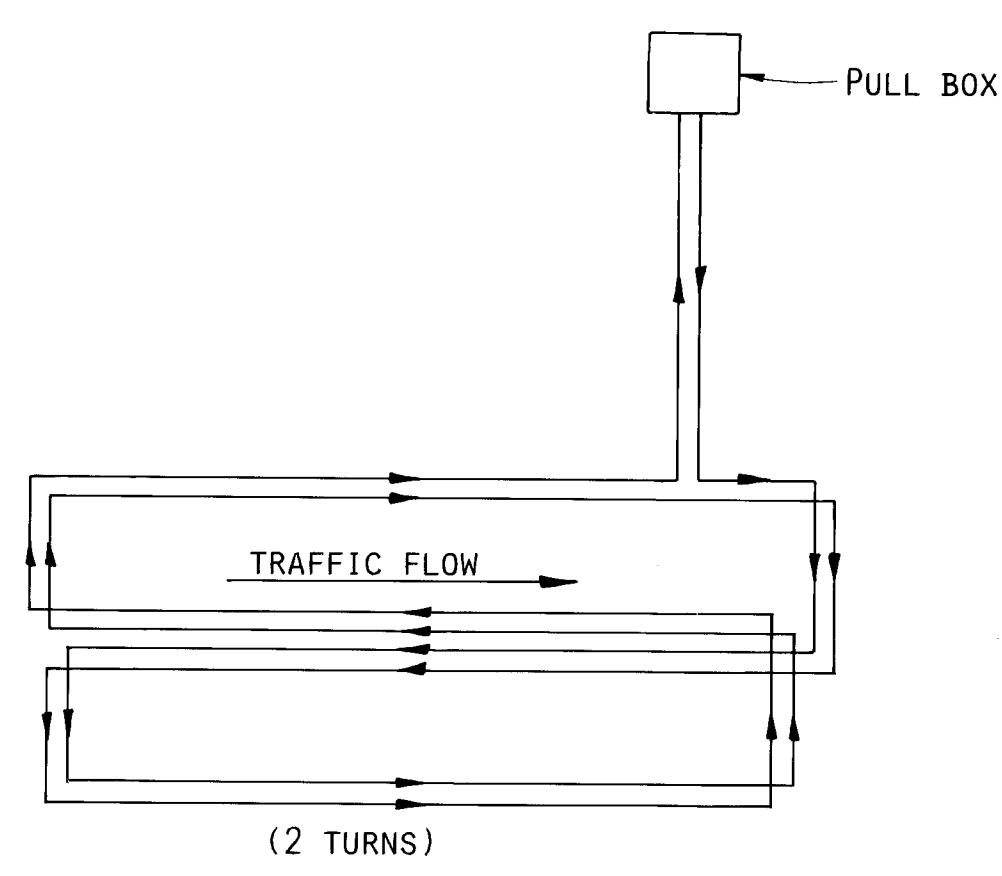
TYPICAL SINGLE-PULL LOOP WIRE PLACEMENT

NO SCALE



CONNECTION DETAIL - SINGLE-PULL LOOPS

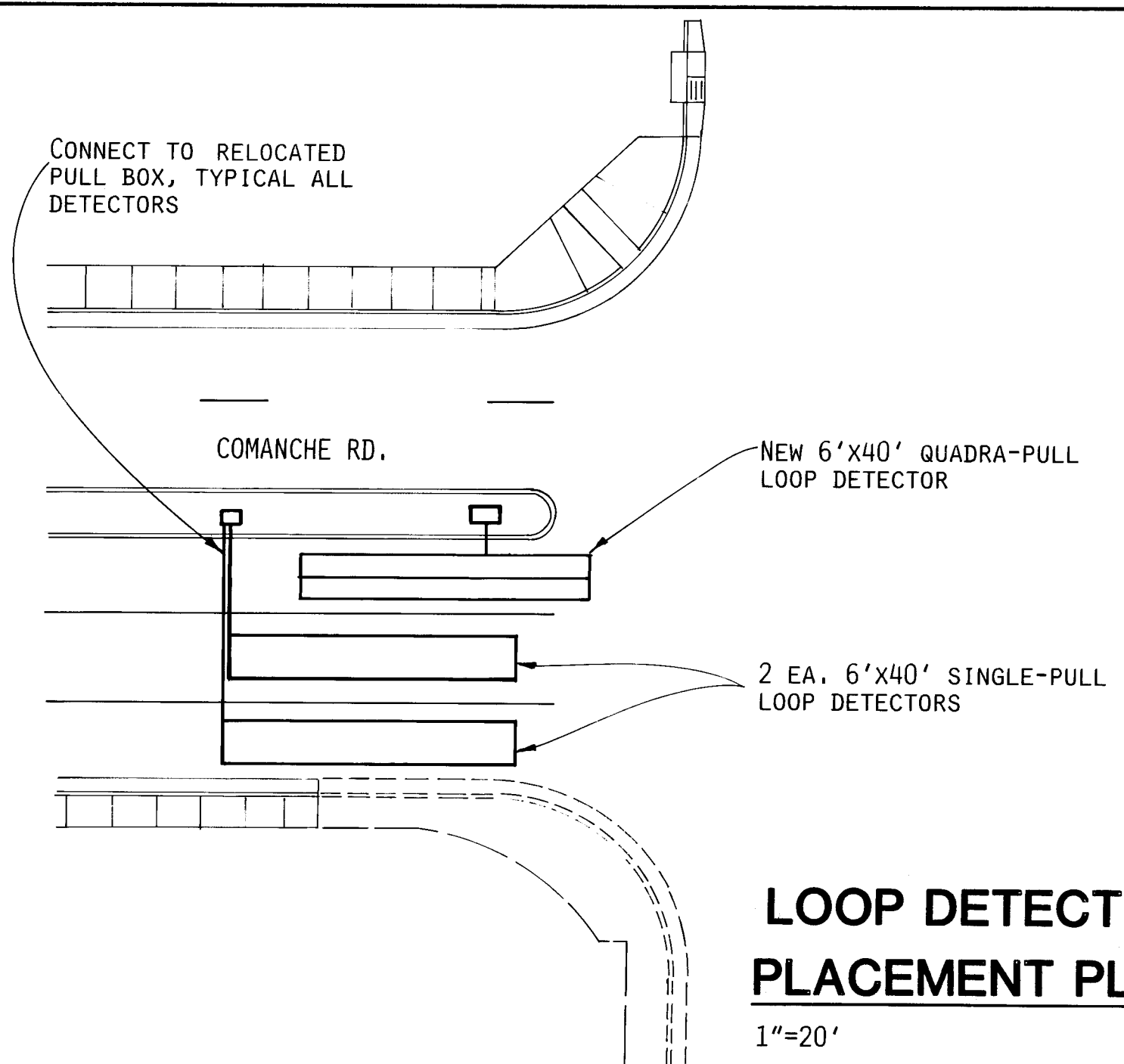
NO SCALE



NOTE: ALL WIRES MUST BE WOUND IN THE DIRECTION SHOWN.

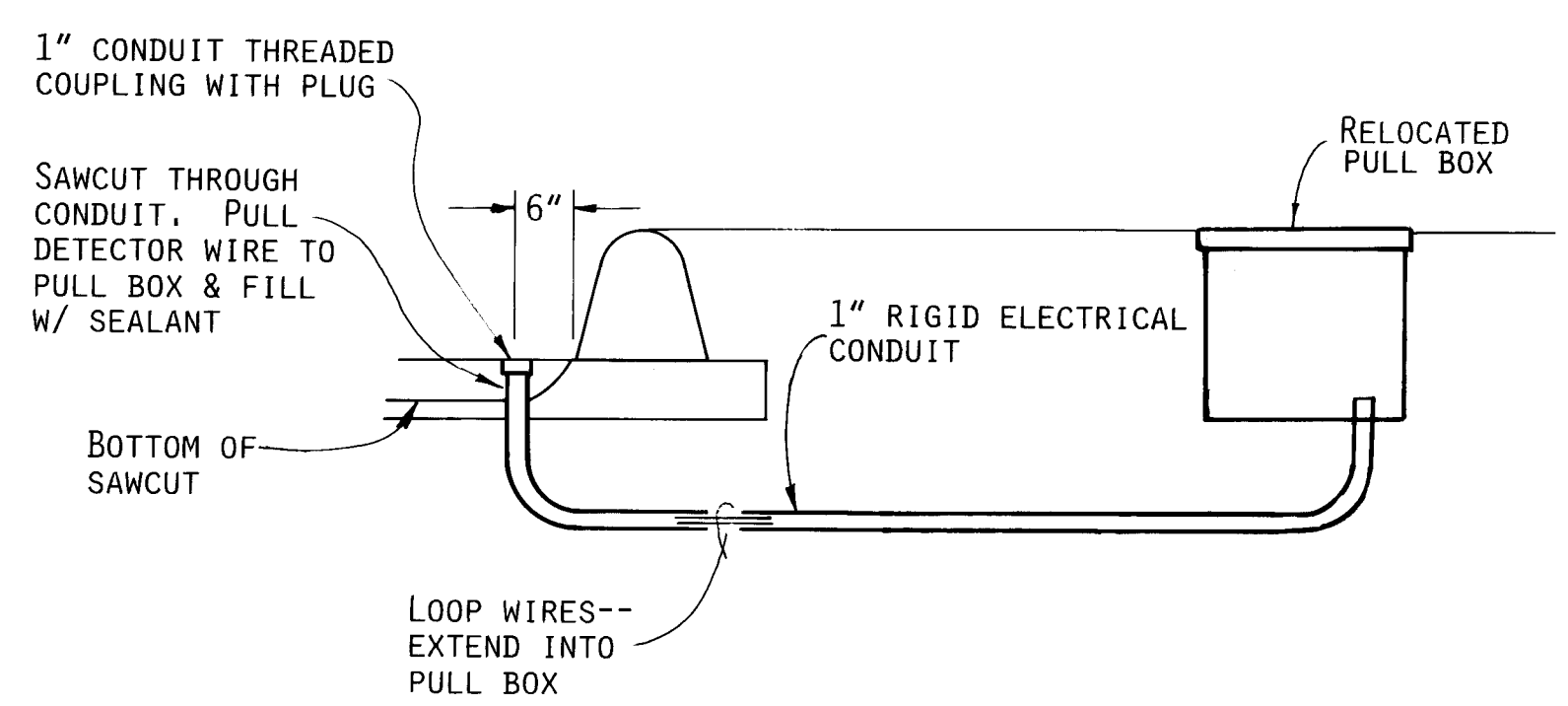
TYPICAL QUADRA-PULL LOOP WIRE PLACEMENT

NO SCALE



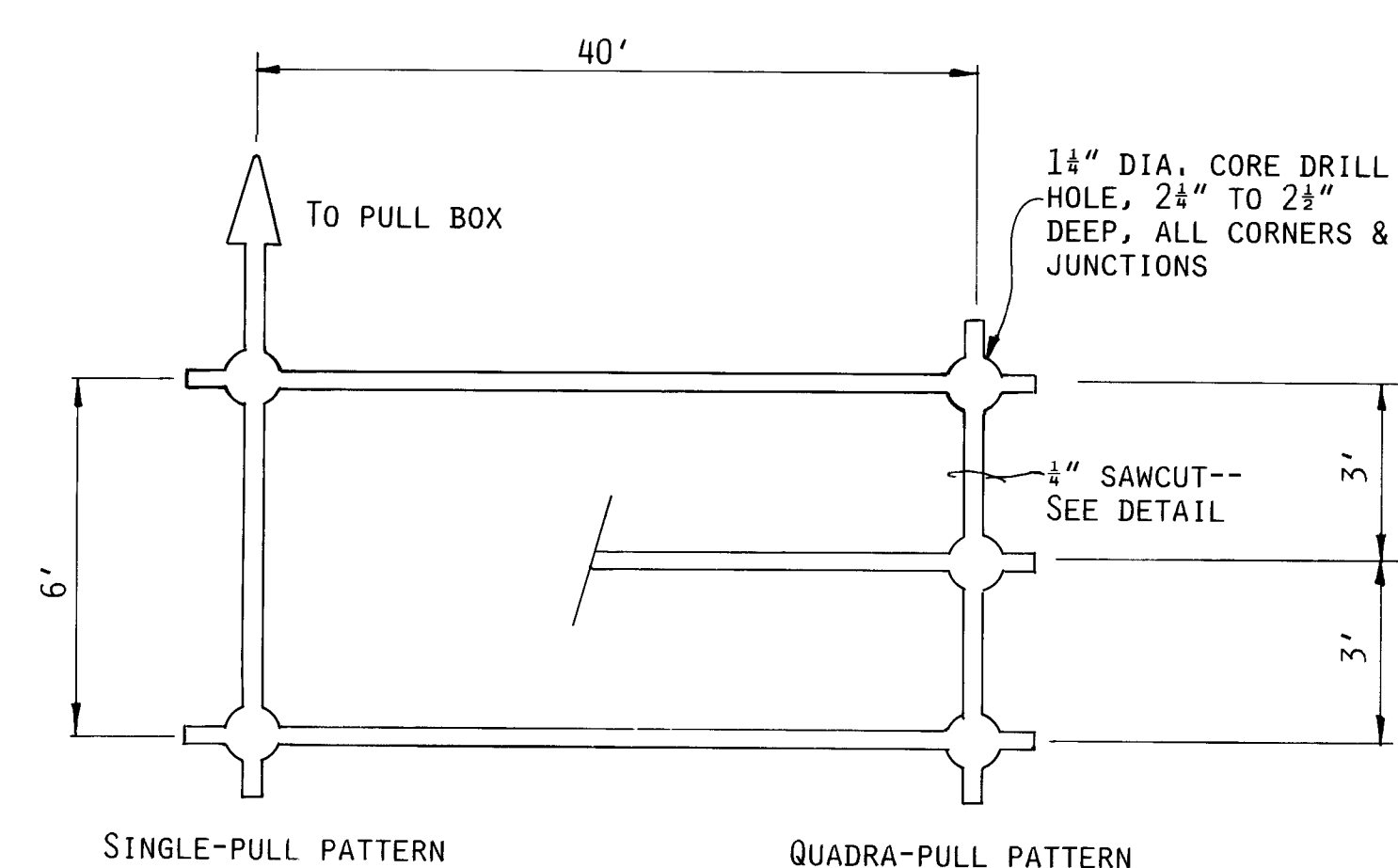
LOOP DETECTOR PLACEMENT PLAN

1"=20'



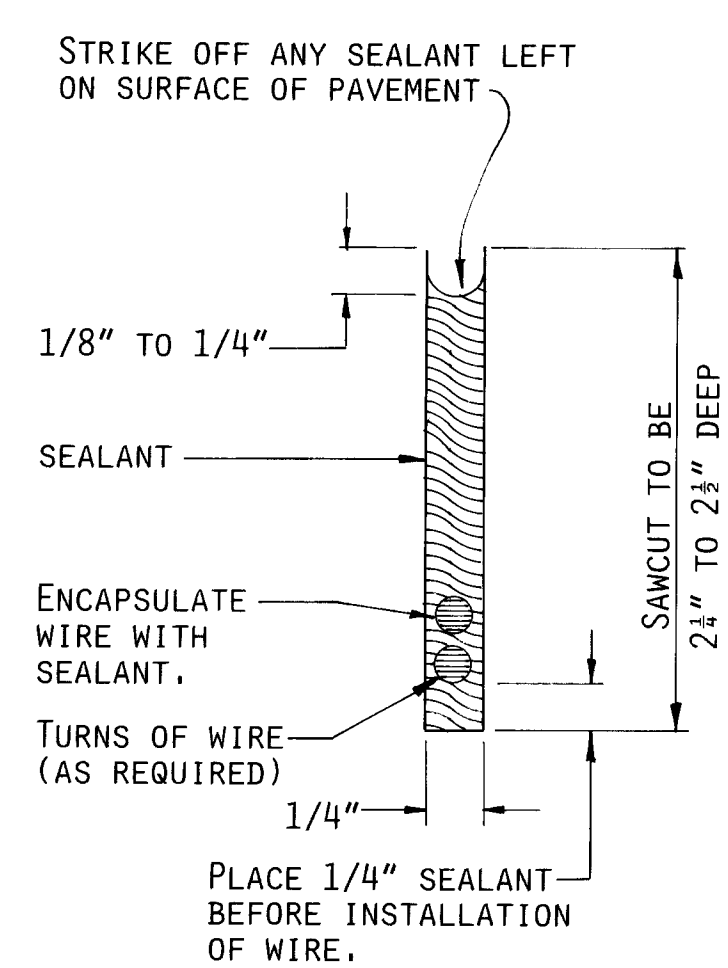
LOOP WIRE TERMINATION DETAIL

NO SCALE



TYPICAL ROADWAY LOOP SAWCUT DETAIL

NO SCALE



SAWCUT DETAIL

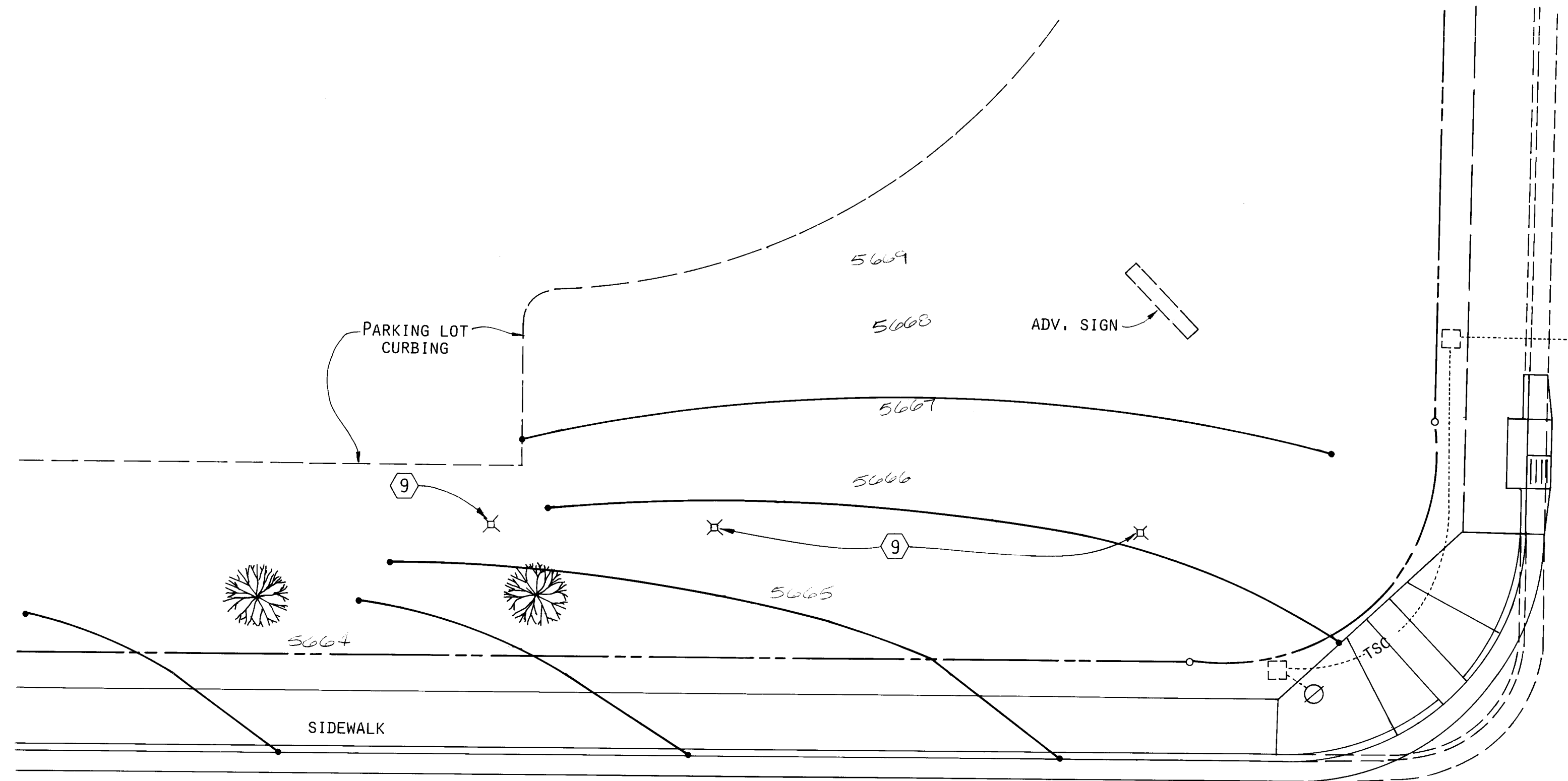
NO SCALE

NOTES

1. ALL LOOP DETECTOR WIRE SHALL BE NO. 14 AWG. STRANDED COPPER WIRE WITH CROSSLINKED POLYETHYLENE INSULATION (INDUSTRY TYPE XHHW) CONFORMING TO THE REQUIREMENTS OF I.M.S.A. SPECIFICATIONS NO. 51-3 1984. BACKER ROD SHALL NOT BE USED IN THE INSTALLATION OF LOOP (EXCEPT PIECES LESS THAN 12" WHICH MAY BE PLACED OVER THE WIRE AT THE SAW CUT CORNERS TO HOLD THE WIRE). A 1/4" LAYER OF SEALANT SHALL BE PLACED IN THE SAWCUT BEFORE PLACEMENT OF THE WIRE AND THEN THE WIRE SHALL BE ENCAPSULATED WITH SEALANT. HOT-MELT RUBBERIZED ASPHALT LOOP DETECTOR SEALANT MANUFACTURED BY CRAFCO SHALL BE AN ACCEPTABLE SEALANT ALTERNATE.
2. ALL LOOP LEAD IN CABLES SHALL BE TAGGED AT CABINET TO IDENTIFY EACH CABLE BY LOOP AND PHASE NUMBER.
3. GROUND LOOP LEAD IN CABLE SHIELDING IN CONTROL CABINET.
4. SEPARATE 1" RIGID ELECTRICAL CONDUITS ARE REQUIRED FOR EACH PAIR OF DETECTOR WIRES.

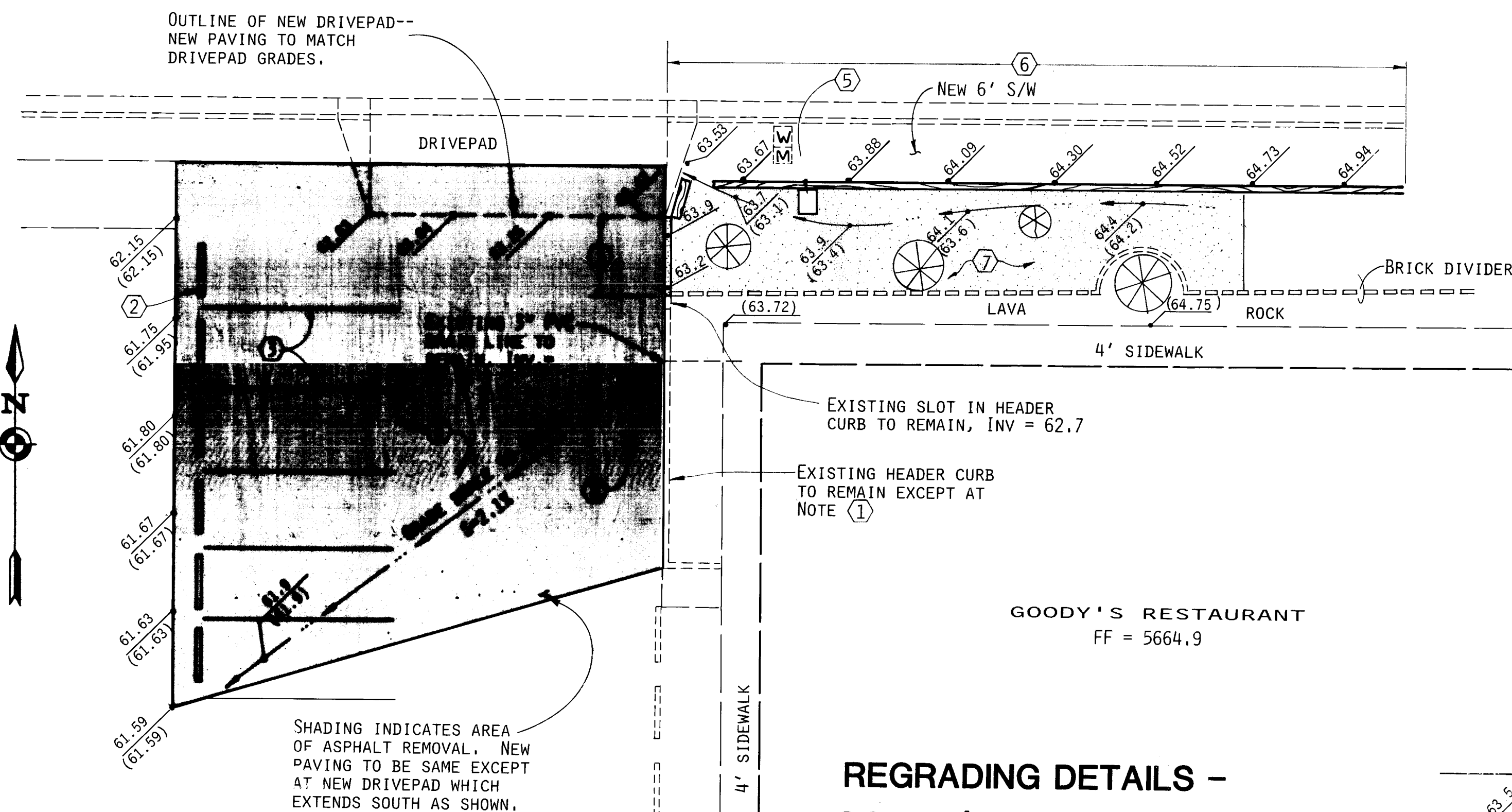
AS BUILT INFORMATION			BENCH MARKS			SURVEY INFORMATION			ENGINEER'S SEAL		
NO.	DATE	BY	NO.	DATE	BY	NO.	DATE	BY	NO.	DATE	BY
1	8/91	J. GUTIERREZ	1	8/91	J. GUTIERREZ	1	8/91	J. GUTIERREZ	1	8/91	J. GUTIERREZ
<div><div></div><div>DESIGNED BY: T. Isacson DRAWN BY: N. Padoa CHECKED BY: T. Isacson</div></div>											

CITY OF ALBUQUERQUE PUBLIC WORKS DEPARTMENT ENGINEERING GROUP					
TITLE: Comanche Road Paving & Utility Reconstruction LOOP DETECTOR DETAILS					
APPROVALS	ENGINEER	DATE	APPROVALS	ENGINEER	DATE
D.R.C. Chair	R. D. Brown	11-15-91	Water	J. Hill	11-15-91
Trans. Dev.	R. D. Brown	11-13-91	Waste Water	J. Hill	"
Hydrology	NA				
Traffic	R. D. Brown	11-19-91			
PROJECT NO.	3696.91	MAP NO.	G-21	SHEET	7 OF 12



REGRADING DETAILS - CREDIT UNION CENTER

1"=10'



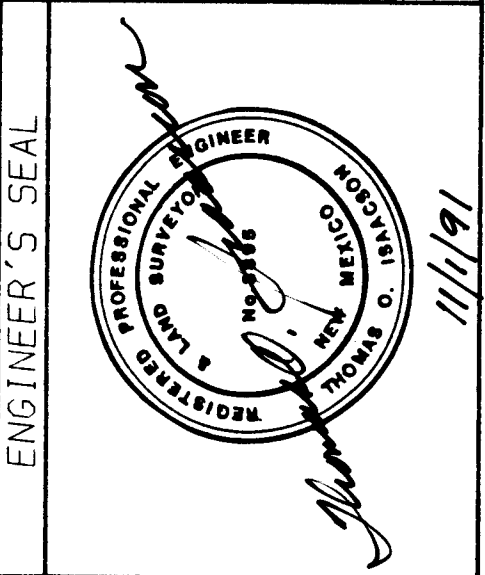
REGRADING DETAILS - GOODY'S RESTAURANT

1"=10'

LEGEND
— EXISTING CONTOURS
— FINISH CONTOURS

KEYED NOTES

- 1 REMOVE 8 LF OF HEADER CURB AND REBUILD PER STD. DETAIL #2415 TO NEW TOP OF CURB ELEVATION SHOWN.
- 2 REMOVE & RE-INSTALL PARKING BUMPERS, 6 EA.
- 3 PAINT NEW PARKING LOT STRIPES, 6 EA.
- 4 REMOVE EXISTING ASPHALT AND RE-BUILD TO NEW GRADES SHOWN, 2" AC SURFACE COURSE ON COMPACTED SUB-GRADE.
- 5 RAISE IRRIGATION VALVE CONTROL BOX 0.2' TO NEW FINISH GRADE.
- 6 REMOVE EXISTING RAILROAD TIE LANDSCAPING BORDER AND RE-SET 0.2' ABOVE NEW ADJACENT SW AND DRIVEPAD. LEAVE OPENING FOR DRAINAGE OUTLET.
- 7 RE-GRADE LANDSCAPING AREA, RE-MOVE & STOCKPILE EXISTING GRAVEL. REMOVE & DISPOSE EXISTING PLASTIC SHEETING. RAISE SUBGRADE WITH CLEAN IMPORTED GRANULAR FILL. LAY NEW 10 MIL BLACK POLYETHYLENE SHEET. REPLACE LANDSCAPING GRAVEL INCLUDING ADDITIONAL GRAVEL IF NEEDED FOR 3" GRAVEL THICKNESS.
- 8 REGRADE EXISTING SETTLEMENT GAUGE COVER & CASING TO MATCH ASPHALT GRADE.
- 9 REGRADE EXISTING SETTLEMENT GAUGE COVER AND CASING. COVER TO BE 0.2' ABOVE SURROUNDING FINISHED GRADE.



REVISIONS		REMARKS	
NO.	DATE	DATE	BY
1	8-91	8-91	T. Isaacson
2	11-13-91	11-13-91	W. J. Gutierrez
3	11-13-91	11-13-91	W. J. Gutierrez
4	11-13-91	11-13-91	W. J. Gutierrez
5	11-13-91	11-13-91	W. J. Gutierrez
6	11-13-91	11-13-91	W. J. Gutierrez
7	11-13-91	11-13-91	W. J. Gutierrez
8	11-13-91	11-13-91	W. J. Gutierrez
9	11-13-91	11-13-91	W. J. Gutierrez
10	11-13-91	11-13-91	W. J. Gutierrez
11	11-13-91	11-13-91	W. J. Gutierrez
12	11-13-91	11-13-91	W. J. Gutierrez
13	11-13-91	11-13-91	W. J. Gutierrez
14	11-13-91	11-13-91	W. J. Gutierrez
15	11-13-91	11-13-91	W. J. Gutierrez
16	11-13-91	11-13-91	W. J. Gutierrez
17	11-13-91	11-13-91	W. J. Gutierrez
18	11-13-91	11-13-91	W. J. Gutierrez
19	11-13-91	11-13-91	W. J. Gutierrez
20	11-13-91	11-13-91	W. J. Gutierrez

26 3696.910892

CITY OF ALBUQUERQUE
PUBLIC WORKS DEPARTMENT
ENGINEERING GROUP

TITLE: Comanche Road Paving & Utility Reconstruction
REGRADING DETAILS

APPROVALS	ENGINEER	DATE	APPROVALS	ENGINEER	DATE
D.R.C. Chair	W. J. Gutierrez	11-15-91	Water	W. J. Gutierrez	11-13-91
Trans. Dev.	W. J. Gutierrez	11-13-91	Waste Water	W. J. Gutierrez	11-13-91
Hydrology	W. J. Gutierrez	11-13-91	NA	W. J. Gutierrez	11-13-91

PROJECT NO. 3696.91 MAP NO. G-21 SHEET 8 OF 12

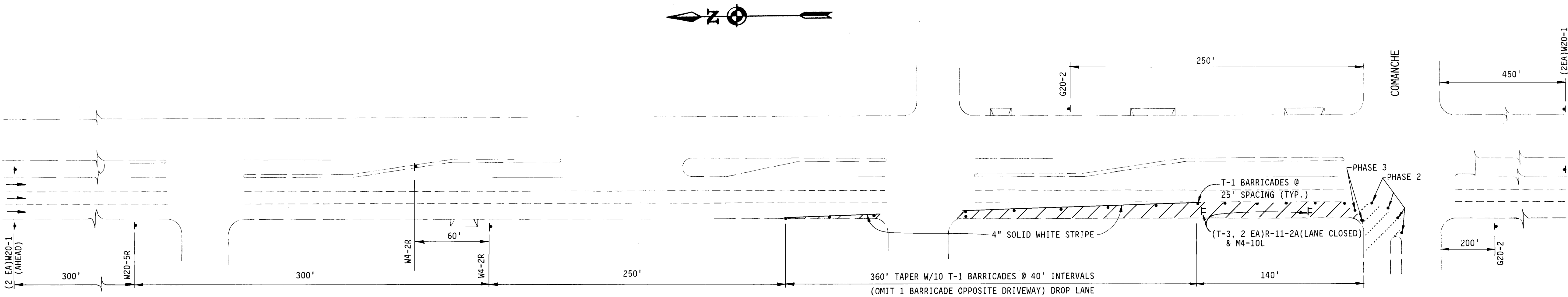
GENERAL
CONSTRUCTION TRAFFIC CONTROL NOTES, ALL PHASES

1. THE CITY WILL PLACE A NOTICE OF CONSTRUCTION ACTIVITY IN LOCAL NEWSPAPER(S) AT LEAST TWO WEEKENDS PRECEDING THE BEGINNING OF EACH MAJOR PHASE OF CONSTRUCTION. THE CONTRACTOR WILL PROVIDE THE PROJECT MANAGER WITH TIMELY SCHEDULE AND DETOUR INFORMATION AND UPDATES FOR PREPARATION OF THESE NOTICES. THERE WILL BE NO DIRECT COMPENSATION FOR THIS CONTRACTOR SERVICE.
2. THE CONTRACTOR IS RESPONSIBLE TO MAINTAIN ALL TRAFFIC CONSTRUCTION CONTROL SERVICES 24 HOURS A DAY, 7 DAYS A WEEK, DURING THE LIFE OF THE PROJECT.
3. LEFT TURNS WILL BE ALLOWED EXCEPT AS NOTED AT JUAN TABO.
4. DOWNSTREAM TAPERS SHALL BE AT 100' MINIMUM.
5. CONTRACTOR SHALL PROVIDE ALL TEMPORARY STRIPING FOR EACH CONSTRUCTION PHASE.
6. TEMPORARY STRIPING SHALL BE PLACED WHERE THE CONTRACTOR'S OPERATION HAS OBLITERATED THE EXISTING OR PREVIOUS TEMPORARY STRIPING AT THE END OF EACH WORKDAY. THE TEMPORARY STRIPING SHALL BE FOUR (4) INCHES WIDE PLASTIC TAPE AS APPROVED BY THE PROJECT MANAGER.
7. CONTRACTOR SHALL REMOVE ALL EXISTING CONFLICTING STRIPING FOR EACH PHASE.
8. STOP BARS SHALL BE PLACED AT ALL INTERSECTIONS AS DIRECTED BY PROJECT MANAGER.
9. OPPOSITE DIRECTION CENTERLINE SHALL BE 4" DOUBLE YELLOW SOLID STRIPING WITH 4" SPACE BETWEEN STRIPES.
10. ADJUSTMENT OF TRAFFIC CONTROL IN FIELD WILL BE ALLOWED ONLY WITH THE APPROVAL OF PROJECT MANAGER.
11. ADJUSTMENT OF STRIPING IN FIELD WILL BE ALLOWED ONLY WITH THE APPROVAL OF CONSTRUCTION COORDINATION.
12. CONSTRUCTION COORDINATION SHALL BE NOTIFIED 48 HOURS PRIOR TO ANY TRAFFIC CONTROL CHANGES NEEDED BY CONTRACTOR WHICH HAVE NOT BEEN PREVIOUSLY APPROVED.

13. TEMPORARY PAVEMENT FOR DRIVEWAYS WILL BE AS REQUIRED TO PROVIDE ACCESS TO BUSINESSES AND RESIDENTS. NO DIRECT PAYMENT WILL BE MADE FOR THIS WORK.
14. SPECIAL ACCESS SIGNS MAY BE NEEDED FOR BUSINESSES.
15. CONSTRUCTION ZONE ON COMANCHE SHALL BE POSTED AT 30 MPH. SIGNS SHALL BE BLACK ON ORANGE.
16. TRAFFIC LANES SHALL BE 12 FEET IN WIDTH WHEREVER POSSIBLE, AND A MINIMUM OF 11 FEET IN WIDTH.
17. CONTRACTOR SHALL INSPECT AND MAINTAIN ALL BARRICADES AT LEAST TWICE EACH WORK DAY AND ONCE DURING THE HOURS OF DARKNESS. ANY UNACCEPTABLE SITUATIONS ENCOUNTERED WILL BE CORRECTED IMMEDIATELY. THE CONTRACTOR SHALL KEEP A TRAFFIC CONTROL DIARY IN A FORMAT APPROVED BY THE PROJECT MANAGER. THIS DIARY SHALL BECOME A PART OF THE CITY'S PERMANENT FILE FOR THE PROJECT.
18. ALL TRAFFIC CONTROL DEVICES SHALL COMPLY WITH PART VI OF THE CURRENT EDITION OF THE MANUAL FOR UNIFORM TRAFFIC CONTROL DEVICES.
19. THE CONTRACTOR SHALL PREPARE AND SUBMIT TO THE PROJECT MANAGER A DETAILED CONSTRUCTION SCHEDULE, WHICH IS SUBJECT TO THE APPROVAL OF THE ASSISTANT CITY ENGINEER FOR CONSTRUCTION COORDINATION, 3 WORKING DAYS PRIOR TO COMMENCING CONSTRUCTION.
20. UNLESS OTHERWISE PROVIDED AS PART OF THE CONSTRUCTION DOCUMENTS, THE CONTRACTOR SHALL PREPARE AND SUBMIT TO THE PROJECT MANAGER DETAILED TRAFFIC CONTROL PLANS, WHICH ARE SUBJECT TO THE APPROVAL OF THE ASSISTANT CITY ENGINEER FOR CONSTRUCTION COORDINATION, 3 WORKING DAYS IN ADVANCE OF ANY REQUIRED CLOSURES.
21. CONTRACTOR SHALL NOTIFY THE FOLLOWING SERVICES 24 HOURS IN ADVANCE OF ANY COMPLETE CLOSURES. POLICE DEPARTMENT, FIRE DEPARTMENT, AMBULANCE SERVICES, AND THE TRANSIT DEPARTMENT.
22. PERMITS TO BARRICADE OR DETOUR TRAFFIC MUST BE OBTAINED FOR EACH PHASE OF CONSTRUCTION THROUGH THE TRAFFIC ENGINEER'S OFFICE AT LEAST 24 HOURS IN ADVANCE OF CONSTRUCTION ACTIVITIES.

23. ALL ADVANCE WARNING SIGNS AND BARRICADES MUST BE INSTALLED BEFORE CONSTRUCTION BEGINS AS DIRECTED BY THE ENGINEER.
24. ALL SIGN LOCATIONS SHOWN ARE APPROXIMATE. EXACT LOCATIONS WILL BE SELECTED IN THE FIELD TO MEET EXISTING CONDITIONS AND APPROVED BY THE PROJECT MANAGER.
25. ALL ADVANCE WARNING SIGNS SHALL BE 48"x48" MINIMUM.
26. ALL ADVANCE WARNING SIGNS NOT DIRECTLY APPLICABLE SHALL BE REMOVED, COMPLETELY COVERED OR TURNED AWAY FROM ONCOMING TRAFFIC.
27. ALL CONSTRUCTION SIGNING SHALL BE BLACK ON REFLECTORIZED ORANGE FIELD UNLESS OTHERWISE SPECIFIED. ALL CONSTRUCTION BARRICADES AND CHANNELIZATION DEVICES SHALL BE ORANGE ON WHITE. REFLECTORIZED UNLESS OTHERWISE SPECIFIED.
28. ALL SIGNS WILL BE GROUND MOUNTED ON SINGLE OR DOUBLE POSTS WITH THE BOTTOM OF THE SIGN 7 FEET ABOVE SIDEWALK LEVEL. EXISTING POSTS MAY BE USED AT SOME LOCATIONS. WITH THE APPROVAL OF THE PROJECT MANAGER PORTABLE SIGN SUPPORTS WILL BE ACCEPTABLE AS AN ALTERNATE.
29. ALL EXISTING REGULATORY SIGNS THAT NEED TO BE REMOVED, RELOCATED, OR REINSTALLED SHALL BE DONE BY THE CITY OF ALBUQUERQUE TRAFFIC ENGINEERING DIVISION. THE CONTRACTOR SHALL NOTIFY THE TRAFFIC ENGINEERING DIVISION 3 WORKING DAYS IN ADVANCE OF ANY REQUIRED WORK.
30. TRAFFIC CONTROL DEVICES REQUIRED AFTER DARK ARE TO BE EQUIPPED WITH WARNING LIGHTS. TYPE (A) FLASHING WARNING LIGHTS SHALL BE USED ON ALL ADVANCE WARNING SIGNS AND ON ALL DEVICES WHICH ARE INTENDED TO WARN MOTORISTS OR PEDESTRIANS OF HAZARDS OR OBSTRUCTIONS IN OR NEAR THE TRAVEL PATH. TYPE (C) STEADY BURN LIGHTS SHALL BE USED ON ALL DEVICES WHICH ARE INTENDED TO DEFINE THE TRAVEL PATH. THIS INCLUDES TAPERS AND TANGENTS.
31. BARRELS AND BARRICADES ARE NOT TO BE INTERMIXED IN THE SAME SERIES OF CHANNELIZATION.
32. TEMPORARY EXCAVATIONS MUST BE PLATED OR PATCHED PRIOR TO OPENING TO TRAFFIC.
33. EQUIPMENT AND MATERIALS ARE NOT TO BE STORED WITHIN THE STREET RIGHT-OF-WAY DURING NON-WORKING HOURS.
34. THE CONTRACTOR SHALL MAINTAIN ACCESS TO BUSINESSES AND RESIDENCES ADJACENT TO THE CONSTRUCTION AREA.

35. THE CONTRACTOR SHALL PROVIDE AND MAINTAIN A SAFE AND ADEQUATE MEANS OF CHANNELIZING PEDESTRIAN TRAFFIC AROUND ALL WORK AREAS THROUGHOUT THE PERIOD OF CONSTRUCTION. ALL SUCH CHANNELIZATION SHALL BE ARRANGED TO PREVENT PEDESTRIANS FROM HAVING TO ENTER THE ROADWAY IN ORDER TO PASS AROUND THE WORK AREAS.
36. BARRICADES AROUND OPEN EXCAVATIONS AND VALVE REPAIRS ARE TO BE SPACED AT 10 FEET.
37. CONTRACTOR SHALL PROVIDE ACCESS SIGNS AS DIRECTED BY THE TRAFFIC ENGINEER. ACCESS SIGNS SHALL HAVE BLUE REFLECTORIZED BACKGROUND WITH 5" WHITE LETTERING.
38. PRIOR TO COMMENCING CONSTRUCTION, THE CONTRACTOR SHALL NOTIFY EACH FACILITY, BUSINESS AND RESIDENT BY WRITTEN LETTER INFORMING OCCUPANT OF SCOPE OF WORK, TENTATIVE START-UP DATE AND TENTATIVE COMPLETION DATE.
39. ALL SIGNS TO BE FACING DIRECTION OF TRAFFIC.
40. LANE CLOSURES AND OTHER INDIVIDUAL SITUATIONS WILL BE ADDRESSED AS THEY ARISE. BARRICADING IS SUBJECT TO REVISION UPON APPROVAL OF THE ASSISTANT CITY ENGINEER FOR CONSTRUCTION COORDINATION. THE SECTIONS OF ROADWAY WHICH REMAIN OPEN TO TRAFFIC SHALL BE IN GOOD RIDING CONDITION AND FREE OF HAZARD TO TRAFFIC AND PEDESTRIAN.
41. DRAINAGE AND UTILITY FACILITIES WILL BE CONSTRUCTED CONCURRENTLY WITH PAVEMENT IMPROVEMENTS.
42. MINOR CROSS STREETS MAY ONLY BE BLOCKED IF SUFFICIENT ALTERNATE ACCESS IS AVAILABLE TO AFFECTED PROPERTIES OR AS DETERMINED BY THE PROJECT MANAGER.
43. ANY ADJUSTMENT TO TRAFFIC SIGNAL PHYSICAL PLANT OR SIGNAL TIMING MUST BE APPROVED BY AND COORDINATED WITH THE CITY OF ALBUQUERQUE TRAFFIC ENGINEERING OPERATIONS DIVISION.
44. TRAFFIC CONTROL PLANS AND QUANTITIES MAY VARY AS FIELD CONDITIONS DICTATE. TRAFFIC CONTROL WILL BE PAID FOR ON A LUMP SUM BASIS AND SHALL INCLUDE PLACING, RELOCATING AND MAINTAINING TRAFFIC CONTROL DEVICES AS SHOWN ON THE PLANS, OR AS DIRECTED BY THE PROJECT MANAGER. NO ADDITIONAL PAYMENT WILL BE MADE FOR CHANGES IN PLANS AND QUANTITIES DUE TO FIELD CONDITIONS.
45. THE CONTRACTOR SHALL BE RESPONSIBLE FOR INSTALLING AND MAINTAINING TEMPORARY PEDESTAL TRAFFIC SIGNALS AND FOR REPOSITIONING SIGNAL HEADS FOR EACH PHASE OF CONSTRUCTION; THE CONTRACTOR SHALL COORDINATE THIS WORK WITH CITY OF ALBUQUERQUE TRAFFIC OPERATIONS.



JUAN TABO - PHASES 2 & 3
1"=50'

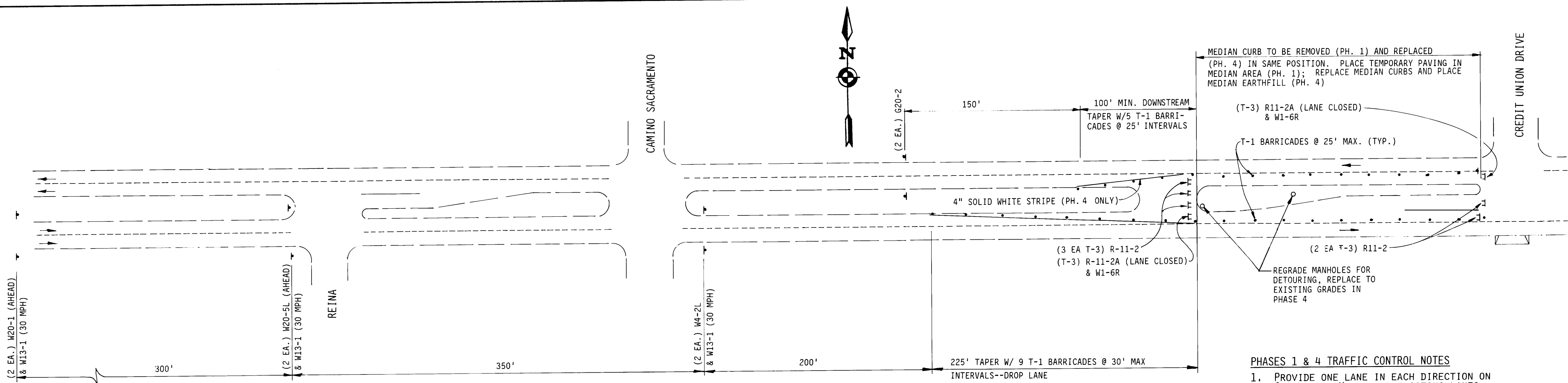
LEGEND

- WORK ZONE
- TEMPORARY SOLID STRIPE
- TYPE 1 BARRICADE
- VERTICAL PANEL (DOUBLE FACED)
- TYPE 3 BARRICADE
- LANE DESIGNATION
- SIGN (INCLUDES MUTCD DESIGNATION)

26 3696.910992

CITY OF ALBUQUERQUE PUBLIC WORKS DEPARTMENT ENGINEERING GROUP					
TITLE: Comanche Road Paving & Utility Reconstruction TRAFFIC CONTROL-JUAN TABO(PHASES 2 & 3)					
APPROVALS	ENGINEER	DATE	APPROVALS	ENGINEER	DATE
D.R.C. Chair	R. Faganough	11-15-91	Water	R. Faganough	11-15-91
Trans. Dev.	R. Faganough	11-15-91	Waste Water	R. Faganough	11-15-91
Hydrology	R. Faganough	11-15-91	Const. Coord.	R. Faganough	11-15-91
PROJECT NO. 3696.91		MAP NO. G-21		SHEET 9 OF 12	

AS BUILT INFORMATION		BENCH MARKS		SURVEY INFORMATION		ENGINEER'S SEAL		REVISIONS		DESIGN	
CONTRACTOR	DATE	CONTRACTOR	DATE	NO.	BY	DATE		NO.	DATE	DESIGNED BY	DATE
WORK	DATE	WORK	DATE	1	J. GUTIERREZ	8/91		REMARKS	DRAWN BY	DATE	
ACCEPTANCE	DATE	ACCEPTANCE	DATE								
VERIFICATION	DATE	VERIFICATION	DATE								
RECORDING	DATE	RECORDING	DATE								



COMANCHE (WEST) - PHASES 1 & 4

1"=50'

PHASES 1 & 4 TRAFFIC CONTROL NOTES

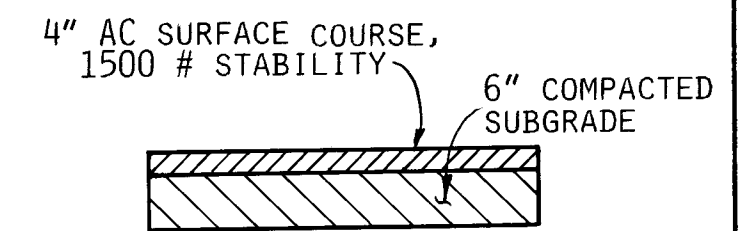
1. PROVIDE ONE LANE IN EACH DIRECTION ON COMANCHE. USE OUTER EXISTING LANES.
2. PERMIT LEFT TURNS @ JUAN TABO.
3. MAINTAIN ALL TRAFFIC LANES ON JUAN TABO.

PHASE 1 CONSTRUCTION NOTES

1. REMOVE TRAFFIC SIGNAL COMPUTER CABLE.
2. REMOVE EXISTING MEDIAN CURBS AND EARTHFILL.
3. REMOVE TRAFFIC SIGNAL PULL BOXES.
4. LOWER MANHOLE COVERS.
5. INSTALL PAVING IN MEDIAN AREAS SHOWN.
6. PERFORM REMOVALS IN WORK ZONE.
7. REMOVE STORM DRAIN MAIN.
8. INSTALL NEW STORM DRAIN MAIN, MANHOLES, AND CONNECTOR PIPE STUBS.

PHASE 4 CONSTRUCTION NOTES

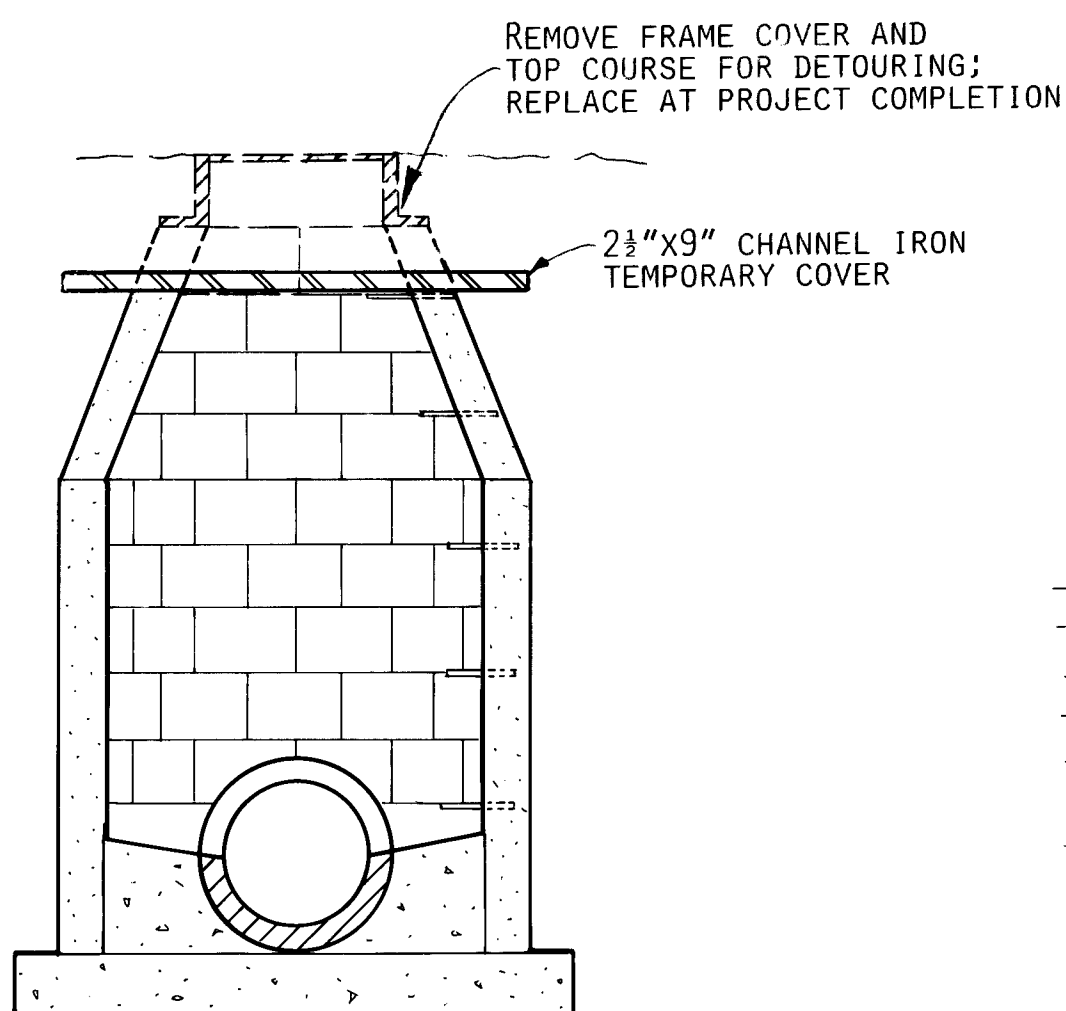
1. REMOVE EXISTING, ABANDONED SANITARY SEWERLINE.
2. INSTALL TRAFFIC SIGNAL FACILITIES.
3. REINSTALL TRAFFIC SIGNAL PULL BOXES AND COMPUTER CABLE.
4. CONSTRUCT PAVING IMPROVEMENTS IN WORK ZONE.
5. INSTALL REMAINING TRAFFIC LOOP DETECTORS.
6. REGRADE MANHOLES IN MEDIAN DETOUR AREAS.
7. REPLACE MEDIAN CURBS REMOVED IN PHASE 1.
8. PLACE COMPACTED EARTHFILL IN MEDIAN OVER MEDIAN PAVEMENT.
9. CONSTRUCT TEXTURED CONCRETE AT MEDIAN CURB NOSES (FIRST 10' OF NOSE).



MEDIAN PAVING FOR DETOURING
NO SCALE



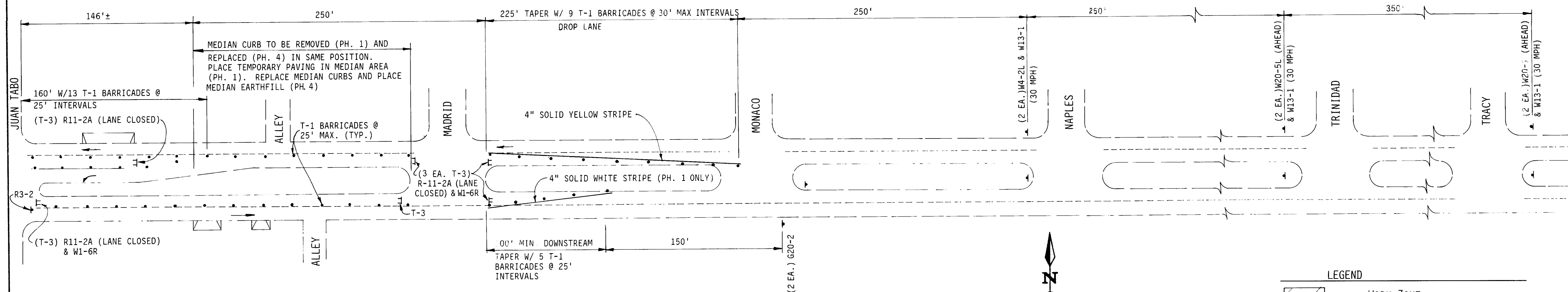
FINAL MEDIAN SECTION
NO SCALE



MANHOLE REGRADING FOR DETOURING

NO SCALE

COMANCHE (CONSTRUCTION AREA) - PHASES 1 & 4



COMANCHE (EAST) - PHASES 1 & 4

1"=50'

LEGEND			
	WORK ZONE		
	TEMPORARY SOLID STRIPE		
	TYPE 1 BARRICADE		
	VERTICAL PANEL (DOUBLE FACED)		
	TYPE THREE BARRICADE		
	LANE DESIGNATION		
	SIGN (INCLUDES MUTCD DESIGNATION)		

AS BUILT INFORMATION CONTRACTOR: Sundance Road & Utility Corp. DATE: 5/02 INSPECTOR'S SIGNATURE: [Signature] DATE: 7/02 FIELD VERIFICATION BY: [Signature] DATE: 7/02 DRAWING BY: [Signature] DATE: 7/02			MICRO-FILM INFORMATION RECORDED BY: [Signature] DATE: [Blank] NO.: [Blank]																		
BENCH MARKS 4" AC SURFACE COURSE, 1500 # STABILITY 6" COMPACTED SUBGRADE MEDIAN PAVING FOR DETOURING NO SCALE COMPACTED EARTHFILL (90% COMPACTION) EXTRUDED/BENDED CONC. MEDIAN CURB (SEE SH. 2) MEDIAN PAVING FOR DETOURING FINAL MEDIAN SECTION NO SCALE			SURVEY INFORMATION FIELD NOTES NO. 1 BY J. GUTIERREZ DATE 8/91																		
ENGINEER'S SEAL PROFESSIONAL SEAL [Signature] E. R. Rios			REVISIONS <table border="1"> <thead> <tr> <th>NO.</th> <th>DATE</th> <th>REMARKS</th> <th>BY</th> </tr> </thead> <tbody> <tr> <td>1</td> <td>8-91</td> <td>DESIGN</td> <td>E. Rios</td> </tr> <tr> <td>2</td> <td>8-91</td> <td>DESIGN</td> <td>H. Kiddle</td> </tr> <tr> <td>3</td> <td>8-91</td> <td>DESIGN</td> <td>E. Rios</td> </tr> </tbody> </table>			NO.	DATE	REMARKS	BY	1	8-91	DESIGN	E. Rios	2	8-91	DESIGN	H. Kiddle	3	8-91	DESIGN	E. Rios
NO.	DATE	REMARKS	BY																		
1	8-91	DESIGN	E. Rios																		
2	8-91	DESIGN	H. Kiddle																		
3	8-91	DESIGN	E. Rios																		
CITY OF ALBUQUERQUE PUBLIC WORKS DEPARTMENT ENGINEERING GROUP TITLE: Comanche Road Paving & Utility Reconstruction TRAFFIC CONTROL-COMANCHE(PHASES 1 & 4)																					
APPROVALS D.R.C. Chair: [Signature] Trans. Dev.: [Signature] Hydrology: [Signature]		ENGINEER DATE: 11-15-91 DATE: 11-13-91 DATE: 11/14/91		DATE 11-15-91 11-13-91 11/14/91																	
PROJECT NO. 3696.91		MAP NO. G-21		SHEET 10 OF 12																	

