

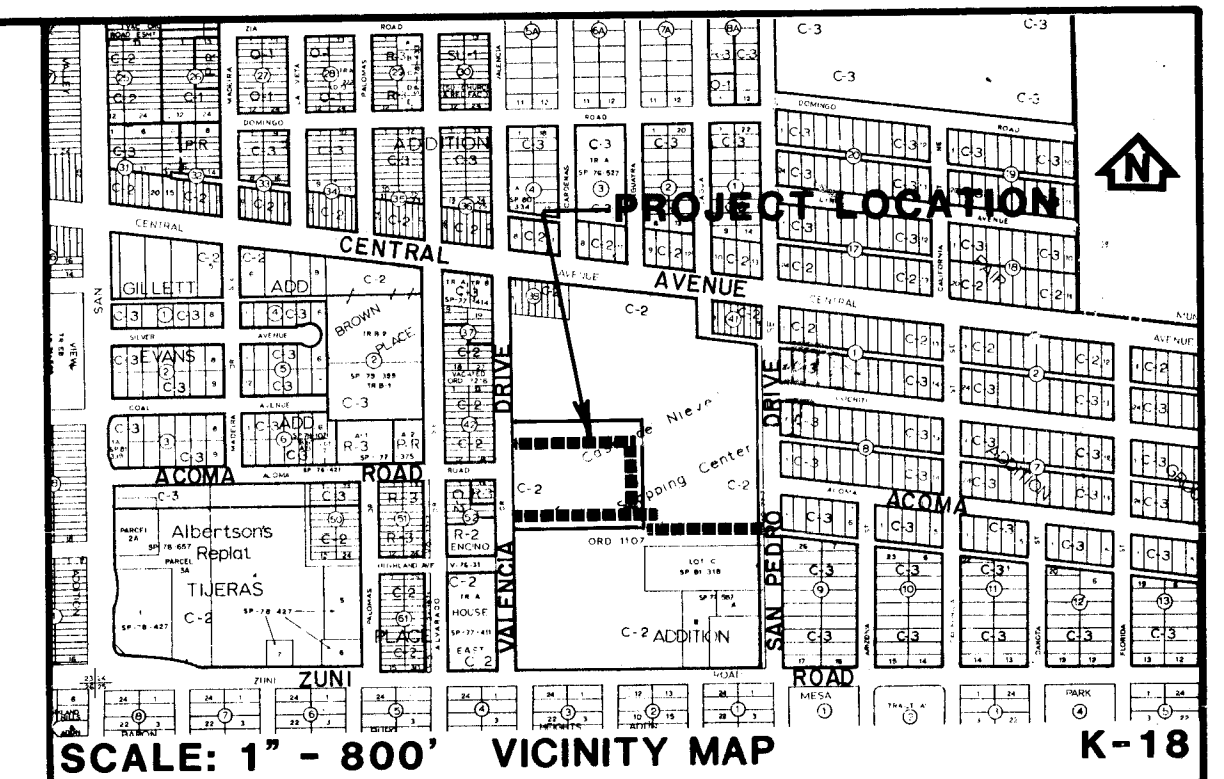
# VALENCIA RETIREMENT / FOX PLAZA

## WATER LINE IMPROVEMENTS

FEBRUARY 1989

### INDEX

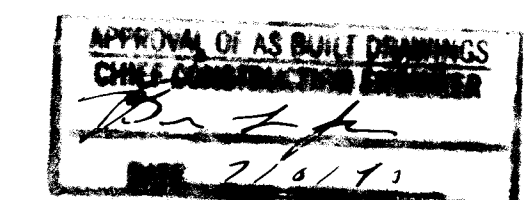
SHEET NO.	DESCRIPTION
1	COVER
2	SITE PLAN
3-5	PLAN & PROFILES



### GENERAL NOTES

1. ALL WORK DETAILED ON THESE PLANS TO BE PERFORMED UNDER CONTRACT SHALL, EXCEPT AS OTHERWISE STATED OR PROVIDED HEREON, BE CONSTRUCTED IN ACCORDANCE WITH THE CITY OF ALBUQUERQUE STANDARD SPECIFICATIONS - PUBLIC WORKS CONSTRUCTION - 1986.
2. TWO (2) WORKING DAYS PRIOR TO ANY EXCAVATION, THE CONTRACTOR SHALL CONTACT LINE LOCATING SERVICE, 765-1234, FOR THE LOCATION OF EXISTING UTILITIES.
3. IF ANY UTILITY LINES, PIPELINES OR UNDERGROUND UTILITY LINES ARE SHOWN ON THESE DRAWINGS, THEY ARE SHOWN IN AN APPROXIMATE MANNER ONLY, AND SUCH LINES MAY EXIST WHERE NONE ARE SHOWN. IF ANY SUCH EXISTING LINES ARE SHOWN, THE LOCATION IS BASED UPON INFORMATION PROVIDED BY THE OWNER OF SAID UTILITY, AND THE INFORMATION MAY BE INCOMPLETE, OR MAY BE OBSOLETE BY THE TIME CONSTRUCTION COMMENCES. THE ENGINEER HAS NOT UNDERTAKEN ANY FIELD VERIFICATION OF THE LOCATION, DEPTH, TYPE OR SIZE OF EXISTING UTILITY LINES, PIPELINES OR UNDERGROUND UTILITY LINES, MAKES NO REPRESENTATION PERTAINING THERETO, AND ASSUMES NO RESPONSIBILITY OR LIABILITY THEREFOR. THE CONTRACTOR SHALL INFORM ITSELF OF THE LOCATION OF ANY UTILITY LINE, PIPELINE OR UNDERGROUND UTILITY LINE IN OR NEAR THE AREA OF THE WORK IN ADVANCE OF AND DURING EXCAVATION WORK. THE CONTRACTOR IS FULL RESPONSIBLE FOR ANY AND ALL DAMAGE CAUSED BY ITS FAILURE TO LOCATE, IDENTIFY AND PRESERVE ANY AND ALL EXISTING UTILITIES, PIPELINES AND UNDERGROUND UTILITY LINES. IN PLANNING AND CONDUCTING EXCAVATION, THE CONTRACTOR SHALL COMPLY WITH STATE STATUTES, MUNICIPAL AND LOCAL ORDINANCES, RULES AND REGULATIONS, IF ANY, PERTAINING TO THE LOCATION OF THESE LINES AND FACILITIES.
4. SHOULD A CONFLICT EXIST BETWEEN THESE PLANS AND ACTUAL FIELD CONDITIONS, THE CONTRACTOR SHALL PROMPTLY NOTIFY THE ENGINEER IN WRITING SO THAT THE CONFLICT CAN BE RESOLVED WITH A MINIMUM AMOUNT OF DELAY FOR ALL PARTIES.
5. THE CONTRACTOR SHALL MAINTAIN ACCESS TO ADJACENT PROPERTIES DURING CONSTRUCTION.
6. ALL WORK ON THIS PROJECT SHALL BE PERFORMED IN ACCORDANCE WITH APPLICABLE FEDERAL STATE AND LOCAL LAWS, RULES AND REGULATIONS CONCERNING SAFETY AND HEALTH.
7. THE CONTRACTOR SHALL SUBMIT A CONSTRUCTION SIGNING AND BARRICADING PLAN TO TRAFFIC ENGINEERING AND OBTAIN A BARRICADING PERMIT PRIOR TO ANY CONSTRUCTION.
8. ALL UTILITIES AND UTILITY SERVICE LINES SHALL BE INSTALLED PRIOR TO PAVING.

(CONTINUED ON SHEET 2)



REV.	2, 4, 5	CITY	ENGR.	DATE	USER	DEPT.	DATE	USER	DEPT.	DATE
				2-28-90	Tom L. Jones		3/28/90	N/A		
APPROVAL OF REVISIONS										
				THE MANN COMPANY				APPROVED FOR CONSTRUCTION  2-28-90 C.E.		
DRAWING NO. 3760				MAP NO. K-18				SHEET 1 OF 5		



## VALENCIA DRIVE CONNECTIONS

1. Close valves 733, 824, and 881.

## SAN PEDRO CONNECTION

1. Close valves 746, 1051, 1101 and 401.



9. BACKFILL COMPACTION SHALL BE ACCORDING TO SPECIFIED STREET USE.
10. TACK COAT REQUIREMENTS SHALL BE DETERMINED BY THE CITY ENGINEER.
11. SIDEWALKS AND WHEELCHAIR RAMPS WITHIN THE CURB RETURNS SHALL BE CONSTRUCTED WHEREVER A NEW CURB RETURN IS CONSTRUCTED.
12. IF CURB IS DEPRESSED FOR A DRIVEPAD OR A HANDICAP RAMP, THE DRIVEPAD OR RAMP SHALL BE CONSTRUCTED PRIOR TO ACCEPTANCE OF THE CURB AND GUTTER.
13. ALL STORM DRAINAGE FACILITIES SHALL BE COMPLETED PRIOR TO FINAL ACCEPTANCE.
14. THE CONTRACTOR SHALL COORDINATE WITH THE WATER SYSTEM DIVISION FOR THE EXECUTION OF THE VALVE SHUT OFF PLAN, NOT LESS THAN (3) WORKING DAYS IN ADVANCE OF ANY WORK THAT MAY AFFECT THE EXISTING PUBLIC WATER UTILITIES.
15. AS A MINIMUM, THE FOLLOWING CITY OF ALBUQUERQUE STANDARD DETAIL DRAWINGS ARE APPLICABLE TO THIS PROJECT:
  - 2102 MANHOLE TYPE "E"
  - 2110 MANHOLE FRAME AND COVER
  - 2118 SERVICE LINE CONNECTIONS AT MANHOLE
  - 2125 SERVICE LINE DETAILS
  - 2206 STORM INLET DOUBLE "D"
  - 2216 STORM INLET FRAME
  - 2220 STORM INLET ALBUQUERQUE GRATE
  - 2301 WATERLINE CONNECTION DETAILS
  - 2315 PIPE TRENCH TERMINOLOGY
  - 2320 CONCRETE BLOCKING DESIGN
  - 2325 VALVE BOX TYPE "A"
  - 2328 RING & COVER FOR VALVE BOX
  - 2330 VALVE STEM EXTENSION, ETC.
  - 2333 WATER VALVE ANCHORAGE
  - 2340 FIRE HYDRANT INSTALLATION
  - 2405 RESIDENTIAL STREET SECTION
  - 2407 ART./COLL. STREET SECTIONS
  - 2415 CURB AND GUTTER & TEMP. PAVING SECTION
  - 2425 DRIVEPADS
  - 2430 SIDEWALK DETAILS
  - 2465 CITYWIDE PAVEMENT CUTS FOR ALL UTILITIES
16. THE CONTRACTOR SHALL REPLACE ANY TRAFFIC CONTROL DEVICES INCLUDING PAVEMENT MARKINGS AFFECTED BY CONSTRUCTION.

## VALVE SHUT-OFF PLAN

ERQUE PARTMENT GROUP		
OX PLAZA WATER LINE		
I		
ROVALS	ENGINEER	DATE
	SHEET	OF
	2	5

26 37600290

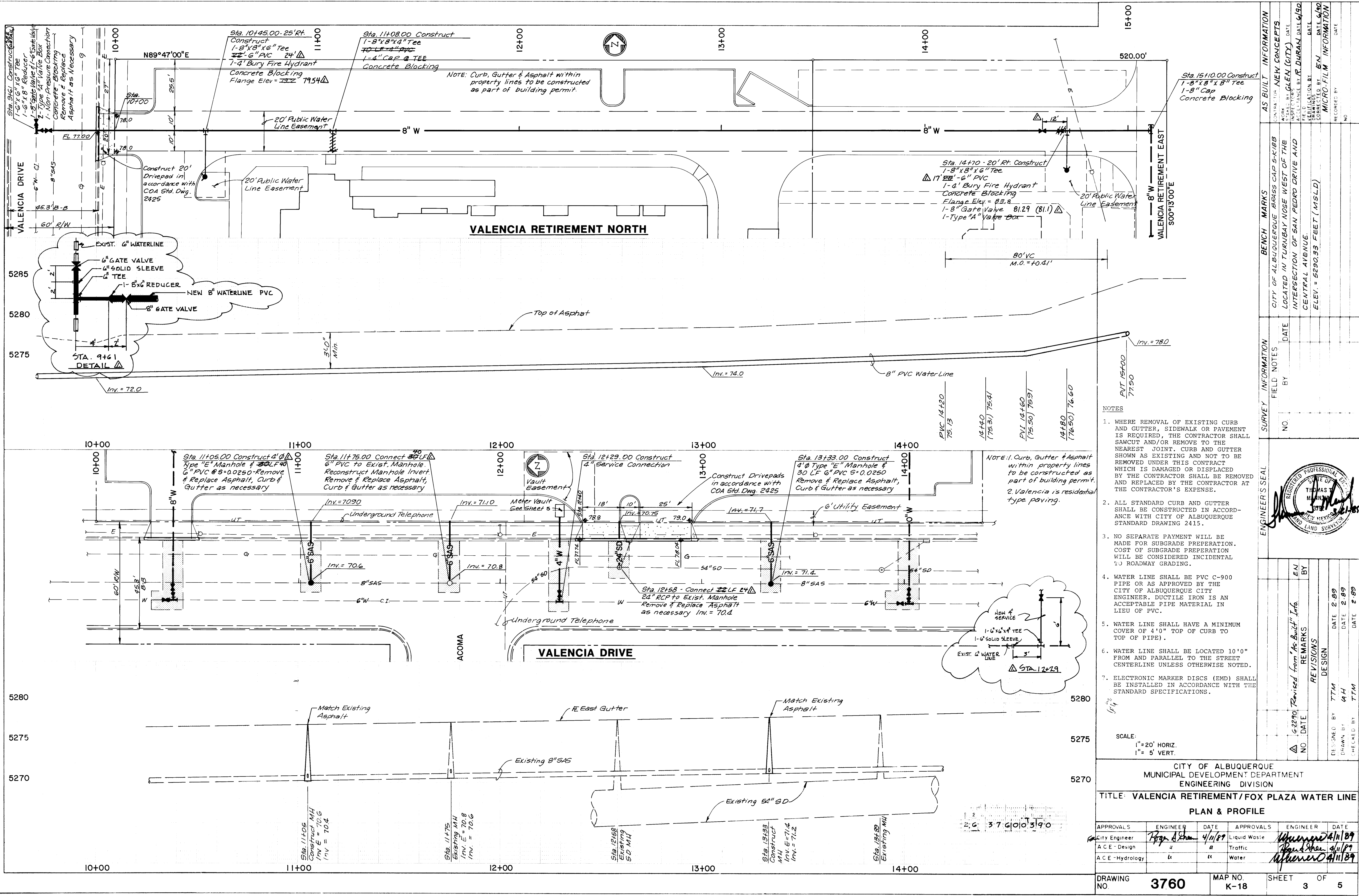
CITY OF ALBUQUERQUE  
PUBLIC WORKS DEPARTMENT  
ENGINEERING GROUP

TITLE: VALENCIA RETIREMENT/FOX PLAZA WATER LINE

## SITE PLAN

APPROVALS	ENGINEER	DATE	APPROVALS	ENGINEER	DATE
DRC Chair	<i>Ronald Green</i>	4/11/89			
Trans. Dev.	<i>"</i>	<i>"</i>			
Utility Dev.	<i>Whitener</i>	4/11/89			

DRAWING NO.	<b>3760</b>	MAP NO.	K-18	SHEET	2	OF	5
-------------	-------------	---------	------	-------	---	----	---



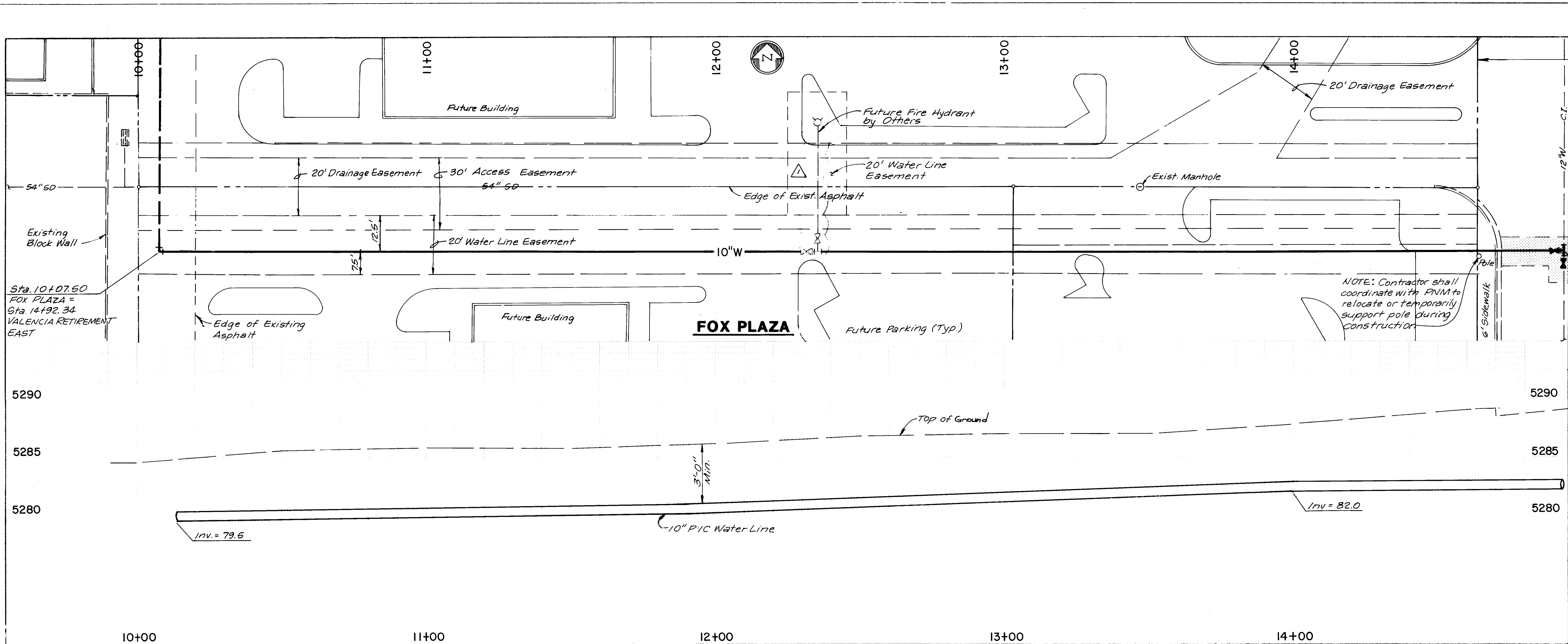
- NOTES
- WHERE REMOVAL OF EXISTING CURB AND GUTTER, SIDEWALK OR PAVEMENT IS REQUIRED, THE CONTRACTOR SHALL SAWCUT AND/OR REMOVE TO THE NEAREST JOINT. CURB AND GUTTER SHOWN AS EXISTING AND NOT TO BE REMOVED UNDER THIS CONTRACT WHICH IS DAMAGED OR DISPLACED BY THE CONTRACTOR SHALL BE REMOVED AND REPLACED BY THE CONTRACTOR AT THE CONTRACTOR'S EXPENSE.
  - ALL STANDARD CURB AND GUTTER SHALL BE CONSTRUCTED IN ACCORDANCE WITH CITY OF ALBUQUERQUE STANDARD DRAWING 2415.
  - NO SEPARATE PAYMENT WILL BE MADE FOR SUBGRADE PREPARATION. COST OF SUBGRADE PREPARATION WILL BE CONSIDERED INCIDENTAL TO ROADWAY GRADING.
  - WATER LINE SHALL BE PVC C-900 PIPE OR AS APPROVED BY THE CITY OF ALBUQUERQUE CITY ENGINEER. DUCTILE IRON IS AN ACCEPTABLE PIPE MATERIAL IN LIEU OF PVC.
  - WATER LINE SHALL HAVE A MINIMUM COVER OF 4'0" TOP OF CURB TO TOP OF PIPE).
  - WATER LINE SHALL BE LOCATED 10'0" FROM AND PARALLEL TO THE STREET CENTERLINE UNLESS OTHERWISE NOTED.
  - ELECTRONIC MARKER DISCS (EMD) SHALL BE INSTALLED IN ACCORDANCE WITH THE STANDARD SPECIFICATIONS.

SCALE:  
1"=20' HORIZ.  
1"= 5' VERT.

CITY OF ALBUQUERQUE MUNICIPAL DEVELOPMENT DEPARTMENT ENGINEERING DIVISION			
TITLE: VALENCIA RETIREMENT/FOX PLAZA WATER LINE			
PLAN & PROFILE			
APPROVALS	ENGINEER	DATE	APPROVALS
City Engineer	Thomas H. Hannon	4/11/89	Liquid Waste
ACE-Design	"	"	Traffic
ACE-Hydrology	"	"	Water
DESIGNED BY TTM		DATE 2-89	DATE 2-89
DRAWN BY TTM		DATE 2-89	DATE 2-89
CHECKED BY TTM		DATE 2-89	DATE 2-89
DRAWING NO.	3760	MAP NO.	K-18
SHEET 3		OF 5	




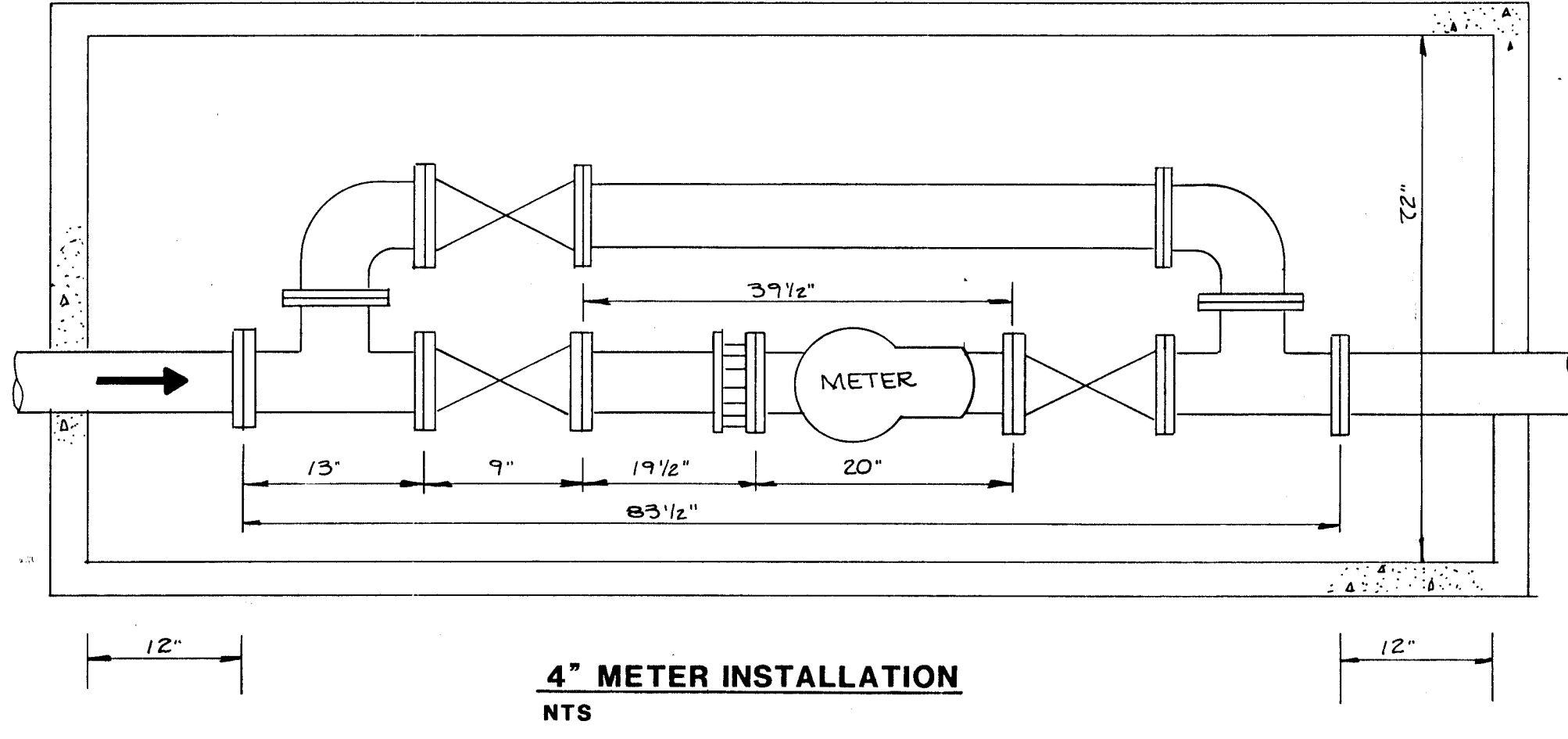
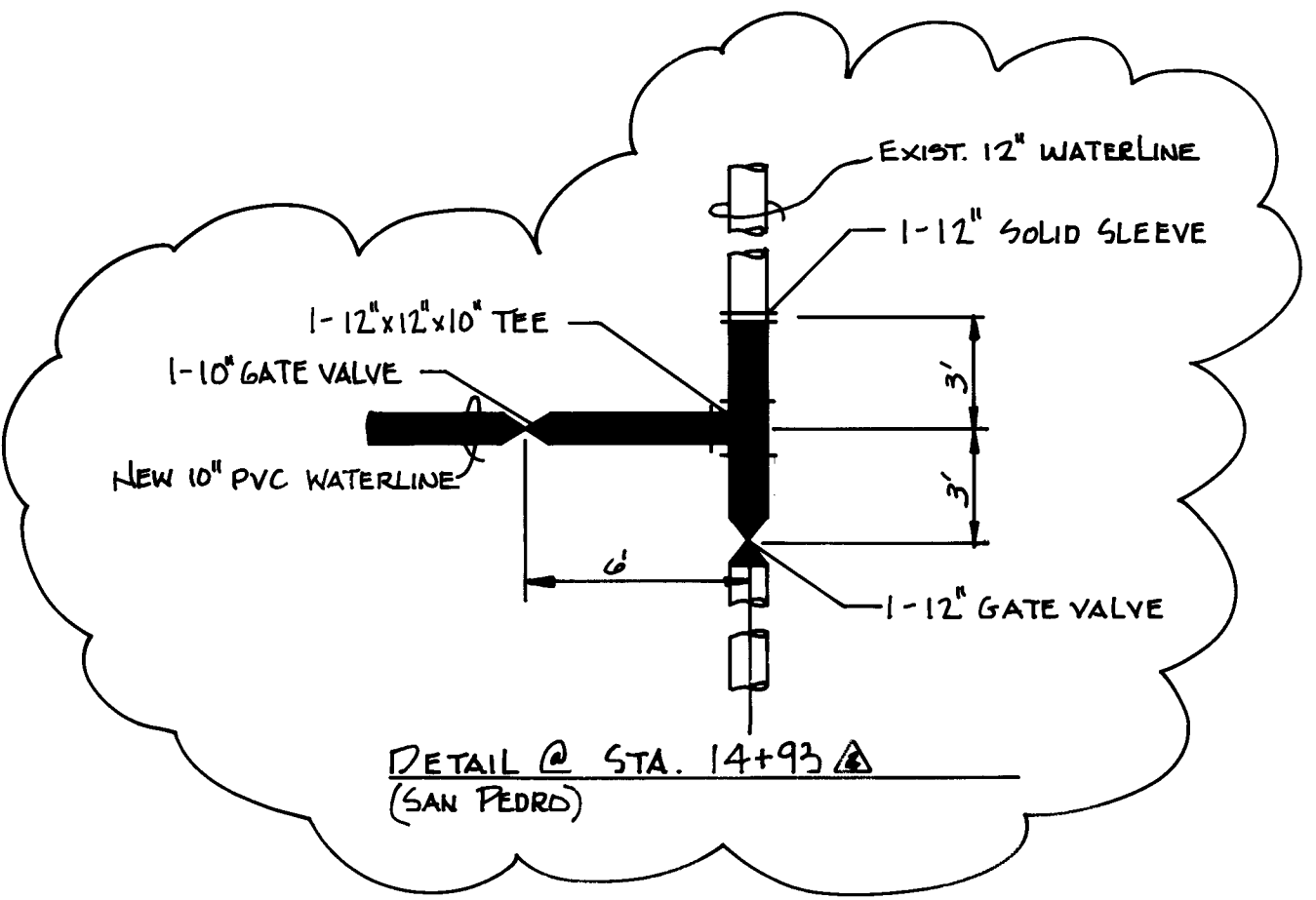




**NOTES**

- WHERE REMOVAL OF EXISTING CURB AND GUTTER, SIDEWALK OR PAVEMENT IS REQUIRED, THE CONTRACTOR SHALL SAWCUT AND/OR REMOVE TO THE NEAREST JOINT. CURB AND GUTTER SHOWN AS EXISTING AND NOT TO BE REMOVED UNDER THIS CONTRACT WHICH IS DAMAGED OR DISPLACED BY THE CONTRACTOR SHALL BE REMOVED AND REPLACED BY THE CONTRACTOR AT THE CONTRACTOR'S EXPENSE.
- ALL STANDARD CURB AND GUTTER SHALL BE CONSTRUCTED IN ACCORDANCE WITH CITY OF ALBUQUERQUE STANDARD DRAWING 2415.
- NO SEPARATE PAYMENT WILL BE MADE FOR SUBGRADE PREPARATION. COST OF SUBGRADE PREPARATION WILL BE CONSIDERED INCIDENTAL TO ROADWAY GRADING.
- WATER LINE SHALL BE PVC C-900 PIPE OR AS APPROVED BY THE CITY OF ALBUQUERQUE CITY ENGINEER. DUCTILE IRON IS AN ACCEPTABLE PIPE MATERIAL IN LIEU OF PVC.
- WATER LINE SHALL HAVE A MINIMUM COVER OF 4'-0" TOP OF CURB TO TOP OF PIPE).
- WATER LINE SHALL BE LOCATED 10'-0" FROM AND PARALLEL TO THE STREET CENTERLINE UNLESS OTHERWISE NOTED.
- ELECTRONIC MARKER DISCS (EMD) SHALL BE INSTALLED IN ACCORDANCE WITH THE STANDARD SPECIFICATIONS.

ENGINEER'S SEAL		SURVEY INFORMATION		BENCH MARKS		AS BUILT INFORMATION	
	EN	NO.	DATE	BY	CITY OF ALBUQUERQUE	CONTRACT NO.	DATE



REVISIONS		DESIGN		REVISIONS		DESIGN	
NO.	DATE	BY	REMARKS	NO.	DATE	BY	REMARKS
1	9/26/90	TM	REMOVE FIRE HYDRANT	1	2/89	TM	
2	6/22/90	TM	Revised from "As-Built" Info.	2	2/89	TM	

CITY OF ALBUQUERQUE MUNICIPAL DEVELOPMENT DEPARTMENT ENGINEERING DIVISION					
TITLE: VALENCIA RETIREMENT / FOX PLAZA WATER LINE					
PLAN & PROFILE					
APPROVALS	ENGINEER	DATE	APPROVALS	ENGINEER	DATE
City Engineer	Roger A. Brown	4/11/89	Liquid Waste	W. J. Martinez	4/11/89
A.C.E. - Design	"	"	Traffic	"	4/11/89
A.C.E. - Hydrology	"	"	Water	"	4/11/89