

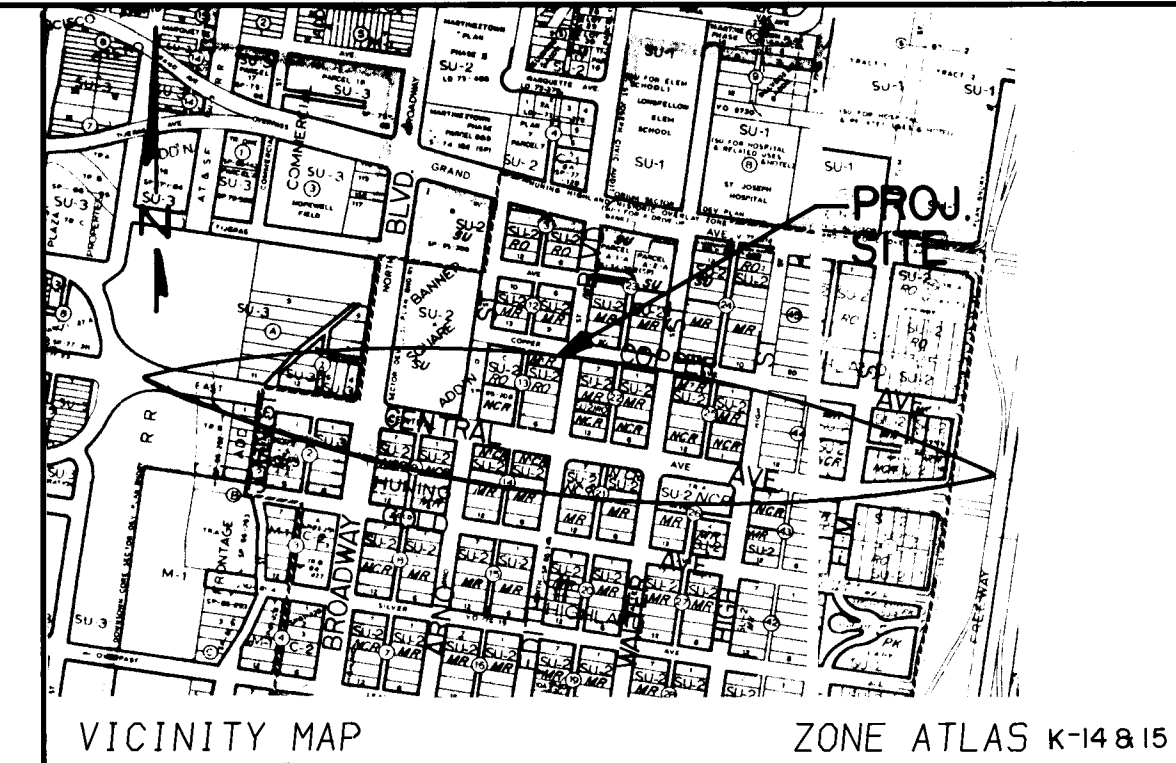
- EXISTING LEGEND
- LIGHT POLE
 - POWER POLE
 - SP SIGN POLE
 - TSP TRAFFIC SIGNAL POLE
 - COMBINED STREET LIGHT & TRAFFIC SIGNAL
 - TS TRAFFIC SIGNAL BOX
 - SP STREET LIGHT PULL BOX
 - WATER METER
 - WATER VALVE
 - GAS METER
 - GAS VALVE
 - MOUNTAIN BELL MANHOLE
 - SANITARY MANHOLE
 - STORM SEWER MANHOLE
 - FIRE HYDRANT
 - PARKING METER
 - ELECTRIC MANHOLE
 - CATCH BASIN
 - FIRE PULL BOX
 - WATERLINE
 - SANITARY SEWER
 - STORM SEWER
 - ELECTRICAL LINE
 - GAS LINE
 - TELEPHONE LINE
 - CURB & GUTTER (FACE)
 - RIGHT-OF-WAY

- NEW LEGEND
- NEW LIGHT POLE
 - NEW BRICK SIDEWALK
 - NEW EXPOSED AGGREGATE SIDEWALK
 - NEW FINISHED SIDEWALK

STREET LIGHT IMPROVEMENTS FOR CENTRAL AVE. BETWEEN JOHN ST. AND LOCUST ST.

INDEX OF DRAWINGS

| SHEET NO. | TITLE |
|-----------|---|
| 1. | TITLE, LEGEND, VICINITY MAP, GENERAL NOTES, INDEX OF DRAWINGS |
| 2. | PROPOSED STREET LIGHTS - 1-24,26,28 |
| 3. | PROPOSED STREET LIGHTS - 25,27,29-52,54 |
| 4. | PROPOSED STREET LIGHTS - 53,55-69 |
| 5. | STREET LIGHT DETAILS |
| 6. | TRAFFIC CONTROL TYPICAL DETAILS |
| 7. | FOR INFORMATION ONLY |
| 8. | FOR INFORMATION ONLY |



GENERAL NOTES

- ALL WORK DETAILED ON THESE PLANS TO BE PERFORMED UNDER CONTRACT SHALL, EXCEPT AS OTHERWISE STATED OR PROVIDED FOR HEREON, BE CONSTRUCTED IN ACCORDANCE WITH THE CITY OF ALBUQUERQUE STANDARD SPECIFICATIONS - PUBLIC WORKS CONSTRUCTION - 1986.
- TWO (2) WORKING DAYS PRIOR TO ANY EXCAVATION, CONTRACTOR MUST CONTACT LINE LOCATING SERVICE, 246-1990, FOR LOCATION OF EXISTING UTILITIES.
- IF ANY UTILITY LINES, PIPELINES, OR UNDERGROUND UTILITY LINES ARE SHOWN ON THESE DRAWINGS, THEY ARE SHOWN IN AN APPROXIMATE MANNER ONLY, AND SUCH LINES MAY EXIST WHERE SHOWN, IF ANY SUCH EXISTING LINES ARE SHOWN, THE LOCATION IS BASED UPON INFORMATION PROVIDED BY THE OWNER OF SAID UTILITY, AND THE INFORMATION MAY BE INCOMPLETE, OR MAY BE OBSOLETE BY THE TIME CONSTRUCTION COMMENCES. THE CONTRACTOR SHALL, THROUGH ITSELF, OF THE LOCATION OF ANY UTILITY LINE, PIPELINE, OR UNDERGROUND UTILITY LINE IN OR NEAR THE AREA OF THE WORK IN ADVANCE OF BEGINNING EXCAVATION WORK. THE CONTRACTOR IS FULLY RESPONSIBLE FOR ANY AND ALL DAMAGE CAUSED BY ITS FAILURE TO LOCATE, IDENTIFY AND PRESERVE ANY AND ALL EXISTING UTILITIES, PIPELINES, AND UNDERGROUND UTILITY LINES. IN PLANNING AND CONDUCTING EXCAVATION, THE CONTRACTOR SHALL COMPLY WITH STATE STATUTES, MUNICIPAL AND LOCAL ORDINANCES, RULES AND REGULATIONS, IF ANY, PERTAINING TO THE LOCATION OF THESE LINES AND FACILITIES.
- SHOULD A CONFLICT EXIST BETWEEN THESE PLANS AND ACTUAL FIELD CONDITIONS, THE CONTRACTOR SHALL PROMPTLY NOTIFY THE PROJECT ENGINEER IN WRITING SO THAT THE CONFLICT CAN BE RESOLVED WITH A MINIMUM AMOUNT OF DELAY FOR ALL PARTIES.
- THE CONTRACTOR SHALL MAINTAIN ACCESS TO ADJACENT PROPERTIES DURING CONSTRUCTION. THE CONTRACTOR SHALL ALSO MAINTAIN PEDESTRIAN ACCESS ALONG BRICK AND CONCRETE SIDEWALK DURING CONSTRUCTION.
- ALL WORK ON THIS PROJECT SHALL BE PERFORMED IN ACCORDANCE WITH APPLICABLE FEDERAL, STATE AND LOCAL LAWS, RULES AND REGULATIONS CONCERNING CONSTRUCTION SAFETY AND HEALTH.
- THE CONTRACTOR MUST SUBMIT A CONSTRUCTION SCHEDULING AND BARRICADING PLAN TO THE CONSTRUCTION COORDINATION SECTION TO RECEIVE A BARRICADING PERMIT 48 HOURS PRIOR TO CONSTRUCTION.
- ALL UTILITIES AND UTILITY SERVICE LINES SHALL BE INSTALLED PRIOR TO INSTALLING BRICK AND CONCRETE SIDEWALK.
- IF CURB IS DEPRESSURED FOR A DRIVEPAD OR A HANDICAP RAMP, THE DRIVEPAD OR RAMP SHALL BE CONSTRUCTED PRIOR TO ACCEPTANCE OF THE CURB AND GUTTER.
- IF THERE IS A UTILITY CONFLICT WITH A PROPOSED STREET LIGHT LOCATION CONTACT THE PROJECT ENGINEER FOR ANY ADJUSTMENTS TO THE STREET LIGHT TO AVOID CONFLICT WITH THE UTILITY.
- ANY ADJUSTMENTS REQUIRED TO THE IRRIGATION SPRINKLING SYSTEM DUE TO THE INSTALLATION OF THE STREET LIGHTS, CONDUIT, POLE BOXES AND ETC., SHALL BE CONSIDERED INCIDENTAL TO THE INSTALLATION OF THE STREET LIGHT SYSTEM.
- PRIOR TO ANY ADJUSTMENTS REQUIRED TO THE IRRIGATION SPRINKLING SYSTEM, THE CONTRACTOR MUST CONTACT EDIE KIRK AND/OR DALE SOZANT AT 823-4062 OF PARK MANAGEMENT OF THE PARKS AND RECREATION DEPARTMENT. THREE (3) WORKING DAYS NOTICE MUST BE GIVEN TO PARK MANAGEMENT FOR WATER SHUT OFF OF THE IRRIGATION SPRINKLING SYSTEM. ADJUSTMENTS MADE TO IRRIGATION SPRINKLING SYSTEM MUST BE INSPECTED BY PARK MANAGEMENT FOR ANY LEAKS PRIOR TO BACKFILL AND COMPACTION OF SOIL. THE MAXIMUM DOWN TIME FOR THE IRRIGATION SYSTEM IS THREE (3) CALENDAR DAYS UNLESS OTHERWISE APPROVED BY THE PROJECT ENGINEER.
- THE CONTRACTOR SHALL ATTEMPT TO SALVAGE THE EXISTING BRICK FOR REINSTALLATION. THE SOLIDER COURSE BRICK OF THE BRICK SIDEWALK SHALL REMAIN IN PLACE AND NOT BE DISTURBED. IF THE BRICK CAN NOT BE REMOVED AND SALVAGED FOR REUSE, THE CONTRACTOR SHALL SAWN THE BRICK AND CONCRETE SIDEWALK PER THE DIMENSIONS SPECIFIED. FOR LONGITUDINAL AND TRANSVERSE JOINTS SAW CUT TO THE NEAREST LONGITUDINAL OR TRANSVERSE JOINT AS PER THE PLAN DIMENSIONS.
- THE MAXIMUM AGGREGATE SIZE FOR THE EXPOSED AGGREGATE CONCRETE SIDEWALK IS 3/8".
- REMOVAL OF BRICK AND CONCRETE SIDEWALK ADJACENT TO DRIVEPADS, WHEELCHAIR RAMPS AND EXPANSION JOINTS, REMOVE BRICK AND CONCRETE SIDEWALK TO EXPANSION JOINTS AS PER THE PLAN DIMENSIONS SPECIFIED.
- THE EXISTING STREET LIGHTING SYSTEM CONSISTS OF TWO CIRCUITS WITHIN THE SAME CONDUIT. ONE CIRCUIT SERVES THE 120FT. STREET LIGHTS AND THE OTHER CIRCUIT SERVES THE 12FT. PEDESTRIAN STREET LIGHTS. THE NEW SYSTEM WILL CONSIST OF ONE SET OF WIRING TO SERVE BOTH THE 120FT. AND 12FT. STREET LIGHTS. THE REMOVAL, REPLACEMENT AND MAKING ALL THE REQUIRED SPLICES AND CONNECTIONS FOR WIRING THE NEW CIRCUIT SHALL BE CONSIDERED INCIDENTAL TO THE BID ITEM FOR WIRING. ALL THE SPLICES AND CONNECTIONS SHALL OCCUR AT THE POLE BOXES AND SHALL BE WATER PROOF. THE CONTRACTOR MAY SALVAGE THE EXISTING WIRING AND/OR DISPOSE OF THE WIRING.
- THE HOLE FOR DIRECT BURIAL OF THE 12FT. PEDESTRIAN STREET LIGHT SHALL BE 2FT. GREATER IN DIAMETER THAN POLE BUTT AND 1FT. DEEPER THAN EXPOSED LENGTH. THE EXISTING SOIL SHALL BE COMPACTED PRIOR TO PLACING 6"-8" TYPE OF GRAVEL BASE COURSE CLASS II. GRAVEL BASE COURSE CLASS II SHALL BE PLACED AND COMPACTED AT 6" LIFTS. THE GRAVEL BASE COURSE CLASS II SHALL BE CONSIDERED INCIDENTAL TO THE 12" PEDESTRIAN STREET LIGHT FOUNDATION.
- THE CONTRACTOR SHALL PROVIDE SUITABLE BORROW MATERIAL ACCEPTABLE TO THE PROJECT ENGINEER TO FILL HOLES LEFT BY THE CONCRETE FOUNDATIONS REQUIRING REMOVAL. THIS MISCELLANEOUS FILLMATERIAL SHALL BE CONSIDERED INCIDENTAL TO THE BID ITEM FOR REMOVAL OF THE CONCRETE FOUNDATIONS AND SHALL INCLUDE HAULING, HANDLING AND COMPACTION.
- TWO (2) DECORATIVE 12FT. PEDESTRIAN STREET LIGHT POLES AND TEN (10) LUMINAIRES ARE CONSIDERED EXTRA AND SHALL BE DELIVERED TO THE CITY FIVE YARDS FOR FUTURE MAINTENANCE OF STREET LIGHTS. CONTACT TOM VAN ETTEN AT 823-4060 OF TRAFFIC OPERATIONS FOR SPECIFIC INSTRUCTIONS ON STORAGE OF EXCESS STREET LIGHT POLES AND LUMINAIRES.
- THE PROJECT SHALL BE BUILT IN FOUR (4) PHASES UNLESS OTHERWISE APPROVED BY THE PROJECT ENGINEER. THE POWER BRING SUPPLIED TO THE STREET LIGHT SYSTEM IS LOCATED IN A ALLEY ON THE NORTH SIDE OF CENTRAL AVENUE BETWEEN EDITH AND WALTER, MORE SPECIFICALLY BETWEEN STREET LIGHT NO. 33 AND 35. THERE IS A POLE BOX ON THE NORTH AND SOUTH SIDE OF CENTRAL CONNECTED BY CONDUIT UNDERNEATH CENTRAL WHICH SERVES THE STREET LIGHT SYSTEM. THIS SHALL SERVE AS THE POINT FOR SEPARATING THE PROJECT INTO FOUR PHASES AS FOLLOWS:
PHASE I - LOCUST TO EDITH (NORTH SIDE OF CENTRAL)
PHASE II - EDITH TO JOHN ST. (NORTH SIDE OF CENTRAL)
PHASE III - LOCUST TO EDITH (SOUTH SIDE OF CENTRAL)
PHASE IV - EDITH TO JOHN ST. (SOUTH SIDE OF CENTRAL)
THE CONTRACTOR MAY NOT PROCEED TO THE NEXT PHASE UNTIL THE PROJECT ENGINEER CONSIDERS THE PREVIOUS PHASE SUBSTANTIALLY COMPLETE. THE CONTRACTOR IS REQUIRED TO HAVE THREE PHASES OF STREET LIGHTING IN OPERATION DURING CONSTRUCTION.
- PERMANENT SURVEY MONUMENTS "CONTRACTOR SHALL NOTIFY THE ENGINEER NOT LESS THAN SEVEN (7) DAYS PRIOR TO STARTING WORK IN ORDER THAT THE ENGINEER MAY TAKE NECESSARY MEASURES TO INSURE THE PRESERVATION OF SURVEY MONUMENTS. CONTRACTOR SHALL NOT DISTURB PERMANENT SURVEY MONUMENTS WITHOUT THE CONSENT OF THE ENGINEER AND SHALL NOTIFY THE ENGINEER AND REAR THE EXPENSE OF REPLACING ANY THAT MAY BE DISTURBED WITHOUT PERMISSION. REPLACEMENT SHALL BE DONE ONLY BY THE ENGINEER. WHEN A CHANGE IS MADE IN THE FINISHED ELEVATION OF THE PAVEMENT OF ANY ROADWAY IN WHICH A PERMANENT SURVEY MONUMENT IS LOCATED, CONTRACTOR SHALL, AT HIS OWN EXPENSE, ADJUST THE MONUMENT COVER TO THE NEW GRADE UNLESS OTHERWISE SPECIFIED."

APPROVAL OF AS BUILT DRAWINGS
CHIEF CONSTRUCTION ENGINEER
DATE 5/8/90

1 2 3 4 5 6 7 8 9 10 11 12 13 14 15
26 4039.90 900190



CITY OF ALBUQUERQUE
PUBLIC WORKS DEPARTMENT

DRAWING NO.

4039.90

MAP NO.

K-14,15

SHEET

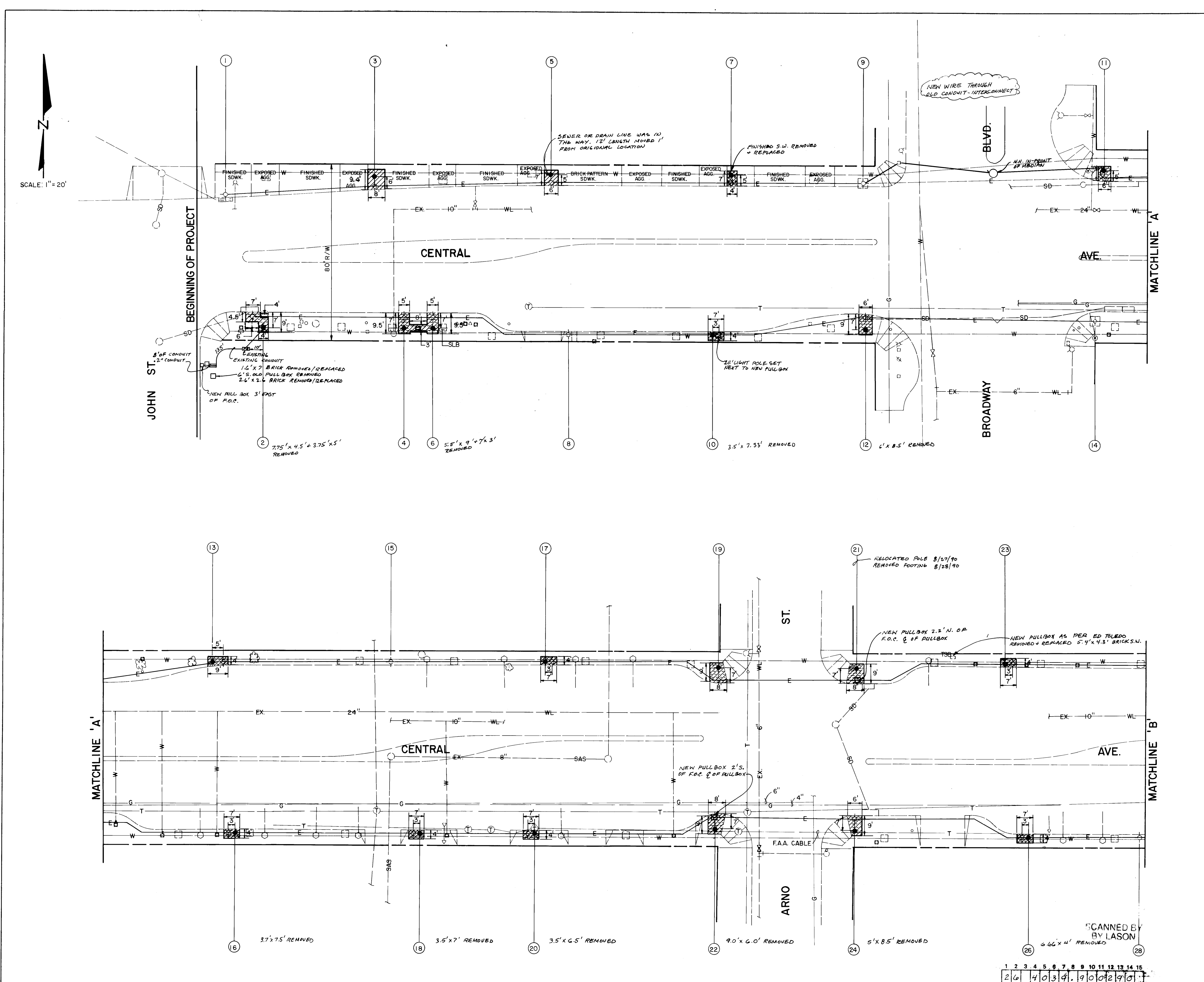
1

OF

8

APPROVED FOR
CONSTRUCTION

5-9-90



CONSTRUCTION NOTES

1. EXISTING 30' POLE TO REMAIN. REMOVE EXISTING POLE AND WIRING, INSTALL NEW WIRING, SPLICE, CONNECT WIRING AS REQUIRED AND RESET POLE.

2. POLE MISSING, REMOVE EXISTING FOUNDATION. REMOVE AND REPLACE 4.5' x 7' x 4' x 7' BRICK SIDEWALK. BUILD NEW PULL BOX AT OLD POLE LOCATION. BUILD NEW 12' POLE 7' FROM FACE OF CURB AND 5' DUE EAST FROM NEW PULL BOX.

3. POLE MISSING, REMOVE EXISTING FOUNDATION. REMOVE AND REPLACE 8' x 9.4' FINISHED CONCRETE SIDEWALK. BUILD NEW PULL BOX AT OLD POLE LOCATION. BUILD NEW 12' POLE 6' FROM FACE OF CURB. REMOVED 9'x8' S.W.

4. POLE MISSING, REMOVE EXISTING FOUNDATION. REMOVE AND REPLACE 5' x 9.5' BRICK SIDEWALK. BUILD NEW 12' POLE 7' FROM FACE OF CURB.

5. REMOVE EXISTING POLE AND FOUNDATION. REMOVE AND REPLACE 7' x 6' BRICK SIDEWALK (MATCH EXISTING PATTERN). BUILD NEW PULL BOX AT OLD POLE LOCATION. BUILD NEW 12' POLE 5' FROM FACE OF CURB. REMOVED 6'x4'3\"/>

6. POLE MISSING, REMOVE EXISTING FOUNDATION. REMOVE AND REPLACE 5' x 9.5' x 3' x 8' BRICK SIDEWALK. BUILD NEW 12' POLE 7' FROM FACE OF CURB. REMOVE EXISTING PULL BOX AND REPLACE DUE CENTER BETWEEN POLES NO. 4 & 6.

7. REMOVE EXISTING POLE AND FOUNDATION. REMOVE AND REPLACE 4' x 7' EXPOSED AGGREGATE SIDEWALK. BUILD NEW PULL BOX AT OLD POLE LOCATION. BUILD NEW 12' POLE 5' FROM FACE OF CURB. REMOVED 6'9\"/>

8. EXISTING 30' POLE TO REMAIN. REMOVE EXISTING POLE AND WIRING, INSTALL NEW WIRING, SPLICE, CONNECT WIRING AS REQUIRED AND RESET POLE.

9. EXISTING COMBINED STREET LIGHT AND TRAFFIC SIGNAL TO REMAIN. REMOVE EXISTING WIRING TO EXISTING PULL BOX, INSTALL NEW WIRING, SPLICE AND CONNECT WIRING AS REQUIRED.

10. REMOVE EXISTING POLE AND FOUNDATION. REMOVE AND REPLACE 4' x 7' BRICK SIDEWALK. BUILD NEW PULL BOX AT OLD POLE LOCATION. BUILD NEW 12' POLE 3' DUE WEST FROM NEW PULL BOX.

11. POLE MISSING, REMOVE EXISTING FOUNDATION. REMOVE AND REPLACE 6' x 7' BRICK SIDEWALK. BUILD NEW PULL BOX AT OLD POLE LOCATION. BUILD NEW 12' POLE 5' FROM FACE OF CURB. (CAUTION: SURVEY BRASS CAPS IN VICINITY OF STREET LIGHT WORK).

12. REMOVE EXISTING 12' DECORATIVE PEDESTRIAN POLE AND FOUNDATION. REMOVE AND REPLACE 6' x 9' BRICK SIDEWALK. BUILD NEW PULL BOX AT OLD POLE LOCATION. BUILD NEW 12' POLE 7' FROM FACE OF CURB. (REFER TO GENERAL NOTE #16 FOR SALVAGE OF EXISTING POLE AND LUMINAIRE.)

13. REMOVE EXISTING POLE AND FOUNDATION. REMOVE AND REPLACE 9' x 4' BRICK SIDEWALK. BUILD NEW PULL BOX AT OLD POLE LOCATION. BUILD NEW 12' POLE 5' DUE EAST FROM NEW PULL BOX AT 1.5' FROM FACE OF CURB. REMOVED 9'x4'3\"/>

14. EXISTING COMBINED STREET LIGHT AND TRAFFIC SIGNAL TO REMAIN. REMOVE EXISTING WIRING TO EXISTING PULL BOX, INSTALL NEW WIRING, SPLICE AND CONNECT WIRING AS REQUIRED.

15. EXISTING 30' POLE AND FOUNDATION TO REMAIN. REMOVE EXISTING POLE AND WIRING, INSTALL NEW WIRING, SPLICE, CONNECT WIRING AS REQUIRED AND RESET POLE.

16. REMOVE EXISTING POLE AND FOUNDATION. REMOVE AND REPLACE 4' x 7' BRICK SIDEWALK. BUILD NEW PULL BOX AT OLD POLE LOCATION. BUILD NEW 12' POLE 3' DUE EAST FROM NEW PULL BOX.

17. REMOVE EXISTING POLE AND FOUNDATION. REMOVE AND REPLACE 4' x 7' BRICK SIDEWALK. BUILD NEW PULL BOX AT OLD POLE LOCATION. BUILD NEW 12' POLE 3' DUE WEST FROM NEW PULL BOX. REMOVED 8'x7'5\"/>

18. REMOVE EXISTING POLE AND FOUNDATION. REMOVE AND REPLACE 4' x 7' BRICK SIDEWALK. BUILD NEW PULL BOX AT OLD POLE LOCATION. BUILD NEW 12' POLE 3' DUE EAST FROM NEW PULL BOX.

19. POLE MISSING, REMOVE EXISTING FOUNDATION. REMOVE AND REPLACE 8' x 9' BRICK SIDEWALK. BUILD NEW PULL BOX AT OLD POLE LOCATION. BUILD NEW 12' POLE 7' DUE NORTH FROM FACE OF CURB. REMOVED 8'x4'7\"/>

20. REMOVE EXISTING POLE AND FOUNDATION. REMOVE AND REPLACE 4' x 7' BRICK SIDEWALK. BUILD NEW PULL BOX AT OLD POLE LOCATION. BUILD NEW 12' POLE 3' DUE EAST FROM NEW PULL BOX. (CAUTION: P.A.A. CABLE IN VICINITY OF STREET LIGHT WORK.)

21. REMOVE EXISTING 30' POLE AND FOUNDATION. REMOVE AND REPLACE 8' x 9' BRICK SIDEWALK. BUILD TYPE 1 FOUNDATION 7' DUE NORTH FROM FACE OF CURB. RESET 30' POLE ON NEW FOUNDATION. REMOVED 6'10\"/>

22. REMOVE EXISTING 30' POLE AND FOUNDATION. REMOVE AND REPLACE 8' x 9' BRICK SIDEWALK. BUILD TYPE 1 FOUNDATION 7' DUE SOUTH FROM FACE OF CURB. RESET 30' POLE ON NEW FOUNDATION.

23. REMOVE EXISTING POLE AND FOUNDATION. REMOVE AND REPLACE 4' x 7' BRICK SIDEWALK. BUILD NEW PULL BOX AT OLD POLE LOCATION. BUILD NEW 12' POLE 3' DUE WEST FROM NEW PULL BOX. REMOVED 4'x7\"/>

24. POLE MISSING, REMOVE EXISTING FOUNDATION. REMOVE AND REPLACE 6' x 9' BRICK SIDEWALK. BUILD NEW PULL BOX AT OLD POLE LOCATION. BUILD NEW 12' POLE 7' DUE SOUTH FROM FACE OF CURB.

25. REMOVE EXISTING POLE AND FOUNDATION. REMOVE AND REPLACE 4' x 7' BRICK SIDEWALK. BUILD NEW PULL BOX AT OLD POLE LOCATION. BUILD NEW 12' POLE 3' DUE EAST FROM NEW PULL BOX.

26. EXISTING 30' POLE AND FOUNDATION TO REMAIN. REMOVE EXISTING POLE AND WIRING, INSTALL NEW WIRING, SPLICE, CONNECT WIRING AS REQUIRED AND RESET POLE.

AS BUILT INFORMATION

CONTRACTOR: *CHRYSLER ELECTRIC*

WORK STARTED BY: *N/A*

ACCEPTANCE BY: *D. Hernandez* DATE: *5-1-90*

FIELD INSPECTION BY: *D. Hernandez* DATE: *5-1-90*

DRAWINGS CORRECTED BY: *J. Ortiz* DATE: *5-1-90*

RECORDED BY: *N/A*

BENCH MARKS

6-K14-EL. 498.74 N.E. COR. OF INTERSECTION OF BROADWAY & CENTRAL IN SIDEWALK, 8' FROM BACK OF CURB ON BROADWAY & CENTRAL

5-K15-B-EL. 500.07 S.W. COR. OF INTERSECTION OF HIGH & CENTRAL, 31.95' SOUTH OF & OF HIGH ST.

SURVEY INFORMATION

FIELD NOTES

NO. BY DATE

362.11 S.L.Y. 3/79

362.11 S.L.Y. 12/80

ENGINEER'S SEAL

REGISTERED PROFESSIONAL ENGINEER

STATE OF NEW MEXICO

5036

1985

REVISIONS

NO. DATE

BY

DESIGN

DATE 2/90

DATE 2/90

DATE 2/90

CITY OF ALBUQUERQUE

PUBLIC WORKS DEPARTMENT

ENGINEERING GROUP

TITLE:

STREET LIGHT IMPROVEMENTS FOR CENTRAL AVE. BETWEEN JOHN ST. AND LOCUST ST.

APPROVALS

ENGINEER

DATE

APPROVALS

ENGINEER

DATE

D.R.C. Chair: *Rogelio Hernandez* 5/1/90 *Hyd Div* *J. Ortiz* 5-1-90

Trans. Dev. *D. Hernandez* 5/1/90

Utility Dev. *R.W. Kane* 5-1-90

DATE: *5-1-90*

DRAWING NO.

4039.90

MAP NO.

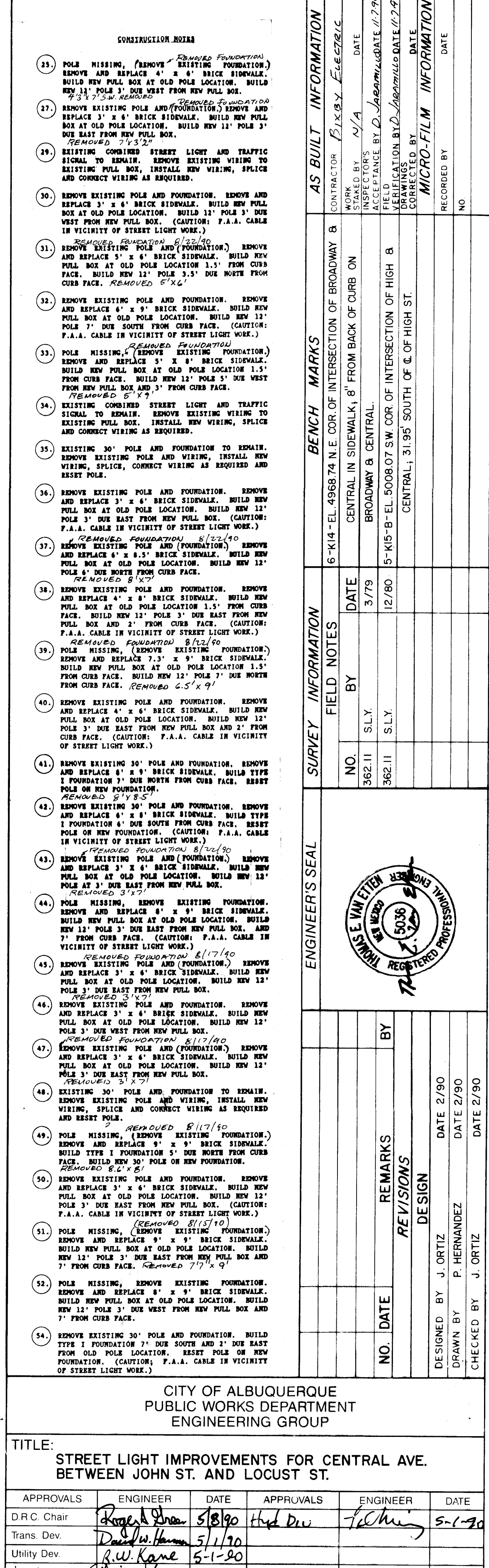
K-14,15

SHEET

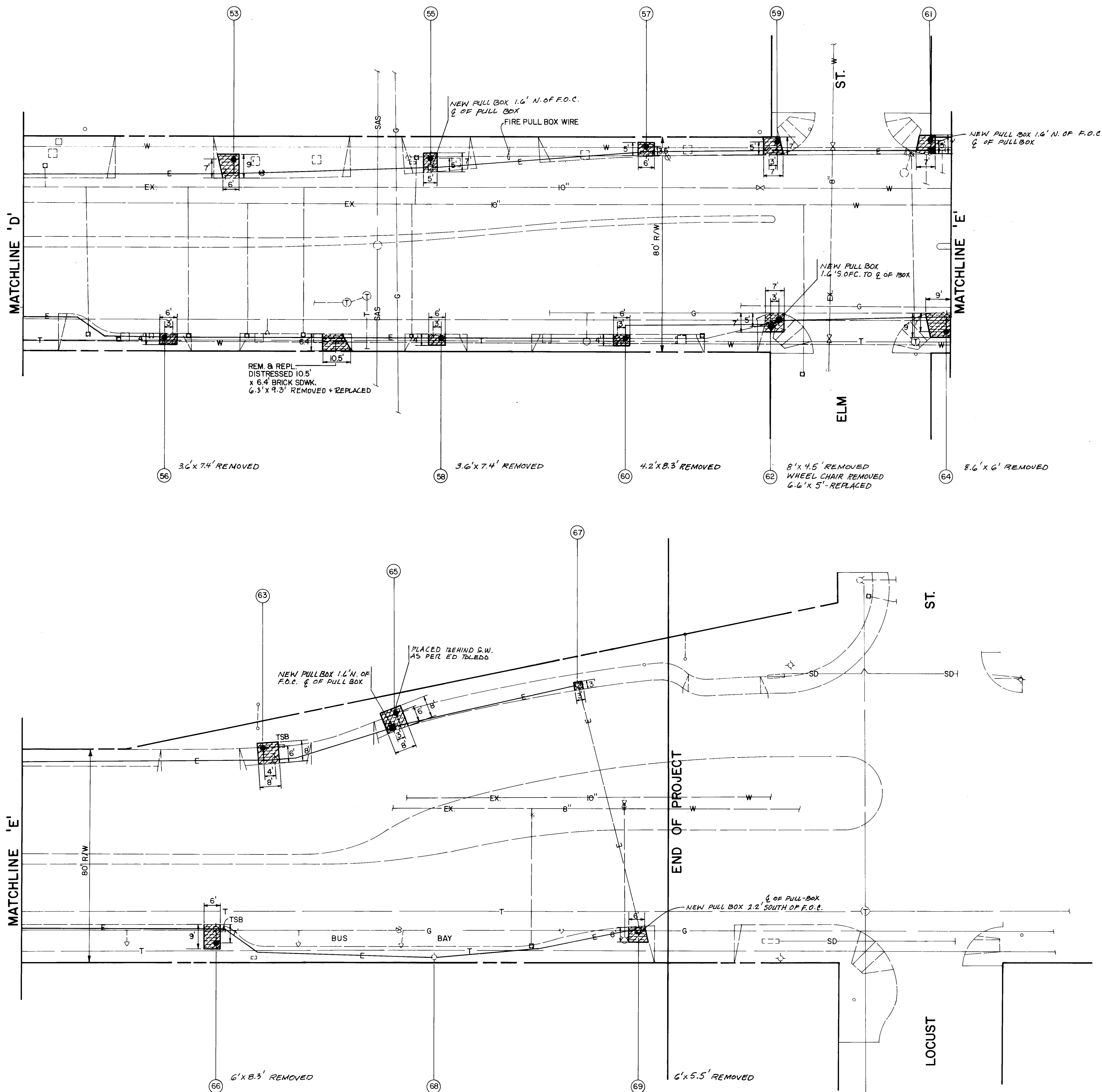
2

OF

8



SCALE: 1"=20'



| CONSTRUCTION NOTES | |
|--------------------|---|
| 53. | POLY MISSING, (REMOVED 8/16/90) REMOVE AND REPLACE 4' x 8' BRICK SIDEWALK. BUILD NEW PULL BOX AT OLD POLY LOCATION. BUILD NEW 12' POLY 3' DUE EAST FROM NEW PULL BOX AND 7' FROM CURB FACE. 7' x 9' REMOVED. |
| 55. | POLY MISSING, (REMOVED 8/16/90) REMOVE AND REPLACE 4' x 8' BRICK SIDEWALK. BUILD NEW PULL BOX AT OLD POLY LOCATION. BUILD NEW 12' POLY 3' DUE EAST FROM NEW PULL BOX AND 7' FROM CURB FACE. 7' x 9' REMOVED. |
| 56. | REMOVE EXIST. POLY AND FOUNDATION. REMOVE AND REPLACE 4' x 8' BRICK SIDEWALK. BUILD NEW PULL BOX AT OLD POLY LOCATION. BUILD NEW 12' POLY 3' DUE WEST FROM NEW PULL BOX AND 1.5' FROM CURB FACE. (CAUTION: F.A.A. CABLE IN VICINITY OF STREET LIGHT WORK). |
| 57. | REMOVE EXIST. POLY AND FOUNDATION. REMOVE AND REPLACE 4' x 8' BRICK SIDEWALK. BUILD NEW PULL BOX AT OLD POLY LOCATION. BUILD NEW 12' POLY 3' DUE EAST FROM NEW PULL BOX AND 1.5' FROM CURB FACE. (CAUTION: F.A.A. CABLE IN VICINITY OF STREET LIGHT WORK). 5' x 6' REMOVED. |
| 58. | REMOVE EXIST. POLY AND FOUNDATION. REMOVE AND REPLACE 4' x 8' BRICK SIDEWALK. BUILD NEW PULL BOX AT OLD POLY LOCATION. BUILD NEW 12' POLY 3' DUE EAST FROM NEW PULL BOX AND 1.5' FROM CURB FACE. |
| 59. | POLY MISSING, (REMOVED 8/16/90) REMOVE AND REPLACE 4' x 8' BRICK SIDEWALK. BUILD NEW PULL BOX AT OLD POLY LOCATION. BUILD NEW 12' POLY 3' DUE NORTH AND 5' FROM CURB FACE. 7' x 6' REMOVED. |
| 60. | REMOVE EXIST. POLY AND FOUNDATION. REMOVE AND REPLACE 4' x 8' BRICK SIDEWALK. BUILD NEW PULL BOX AT OLD POLY LOCATION. BUILD NEW 12' POLY 3' DUE EAST FROM NEW PULL BOX AND 1.5' FROM CURB FACE. (CAUTION: F.A.A. CABLE IN VICINITY OF STREET LIGHT WORK). |
| 61. | POLY MISSING, (REMOVED 8/16/90) REMOVE AND REPLACE 4' x 8' BRICK SIDEWALK. BUILD NEW PULL BOX AT OLD POLY LOCATION. BUILD NEW 12' POLY 3' DUE EAST FROM NEW PULL BOX AND 1.5' FROM CURB FACE. (CAUTION: F.A.A. CABLE IN VICINITY OF STREET LIGHT WORK). |
| 62. | REMOVE EXIST. 30' POLY AND FOUNDATION. REMOVE AND REPLACE 7' x 7' BRICK SIDEWALK. REPLACE 1' x 2' CONCRETE WHEELCHAIR RAMP. BUILD NEW TYPE 1 FOUNDATION 3' DUE WEST FROM OLD POLY LOCATION AND 5' FROM CURB FACE. RESET 30' POLY ON NEW FOUNDATION. |
| 63. | POLY MISSING, (REMOVED 8/16/90) REMOVE AND REPLACE 4' x 8' BRICK SIDEWALK. BUILD NEW PULL BOX AT OLD POLY LOCATION. BUILD NEW 12' POLY 4' DUE WEST FROM NEW PULL BOX AND 6' FROM CURB FACE. 7' x 6' REMOVED. |
| 64. | POLY MISSING, REMOVE EXIST. FOUNDATION. REMOVE AND REPLACE 4' x 8' BRICK SIDEWALK. BUILD NEW PULL BOX AT OLD POLY LOCATION. BUILD NEW 12' POLY 7' FROM CURB FACE. (CAUTION: GAS LINE IN VICINITY OF STREET LIGHT WORK). |
| 65. | POLY MISSING, (REMOVED 8/16/90) REMOVE AND REPLACE 4' x 8' BRICK SIDEWALK. BUILD TYPE 1 FOUNDATION 3' DUE EAST FROM OLD POLY LOCATION AND 6' FROM CURB FACE. BUILD NEW 30' POLY ON NEW FOUNDATION. 7' x 6' REMOVED. |
| 66. | LUMINAIRE MISSING, REMOVE EXIST. POLY AND FOUNDATION. REMOVE AND REPLACE 6' x 9' BRICK SIDEWALK. BUILD NEW PULL BOX AT OLD POLY LOCATION. BUILD NEW 12' POLY 7' FROM CURB FACE. (CAUTION: GAS LINE IN VICINITY OF STREET LIGHT WORK). |
| 67. | POLY MISSING, (REMOVED 8/16/90) REMOVE AND REPLACE 3' x 3' BRICK SIDEWALK. SPLICE AND CONNECT CONDUIT AND WIRING. NO POLE REPLACEMENT. 3' x 5' REMOVED. |
| 68. | EXISTING 30' POLY AND FOUNDATION TO REMAIN. REMOVE EXIST. POLY AND WIRING, INSTALL NEW WIRING, SPLICE AND CONNECT WIRING AS REQUIRED AND RESET POLE. |
| 69. | POLY MISSING, REMOVE EXIST. FOUNDATION. REMOVE AND REPLACE 4' x 8' DISTRESSED BRICK SIDEWALK. SPLICE AND CONNECT CONDUIT AND WIRING. NO POLE REPLACEMENT. (CAUTION: GAS LINE IN VICINITY OF STREET LIGHT WORK). |

| BENCH MARKS | |
|---|------------|
| 6-K14-EL-496874 NE COR OF INTERSECTION OF BROADWAY & CENTRAL IN SIDEWALK 8' FROM BACK OF CURB ON BROADWAY & CENTRAL | DATE 3/79 |
| 5-K15-B-EL-500807 SW COR OF INTERSECTION OF HIGH & CENTRAL; 31.95' SOUTH OF C. OF HIGH ST. | DATE 12/80 |

| SURVEY INFORMATION | |
|--------------------|--------|
| NO. | BY |
| 362.11 | S.L.Y. |
| 362.11 | S.L.Y. |

| ENGINEER'S SEAL | |
|--|--|
| E. VAN TIEG REGISTERED PROFESSIONAL ENGINEER NO. 5036 STATE OF NEW YORK | |

| REVISIONS | |
|-----------|--------|
| NO. | DATE |
| 1 | 5-1-90 |

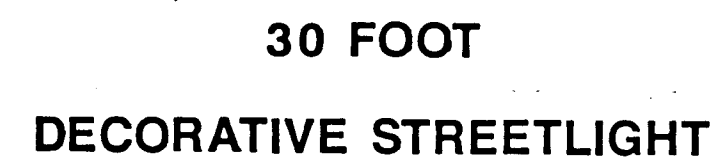
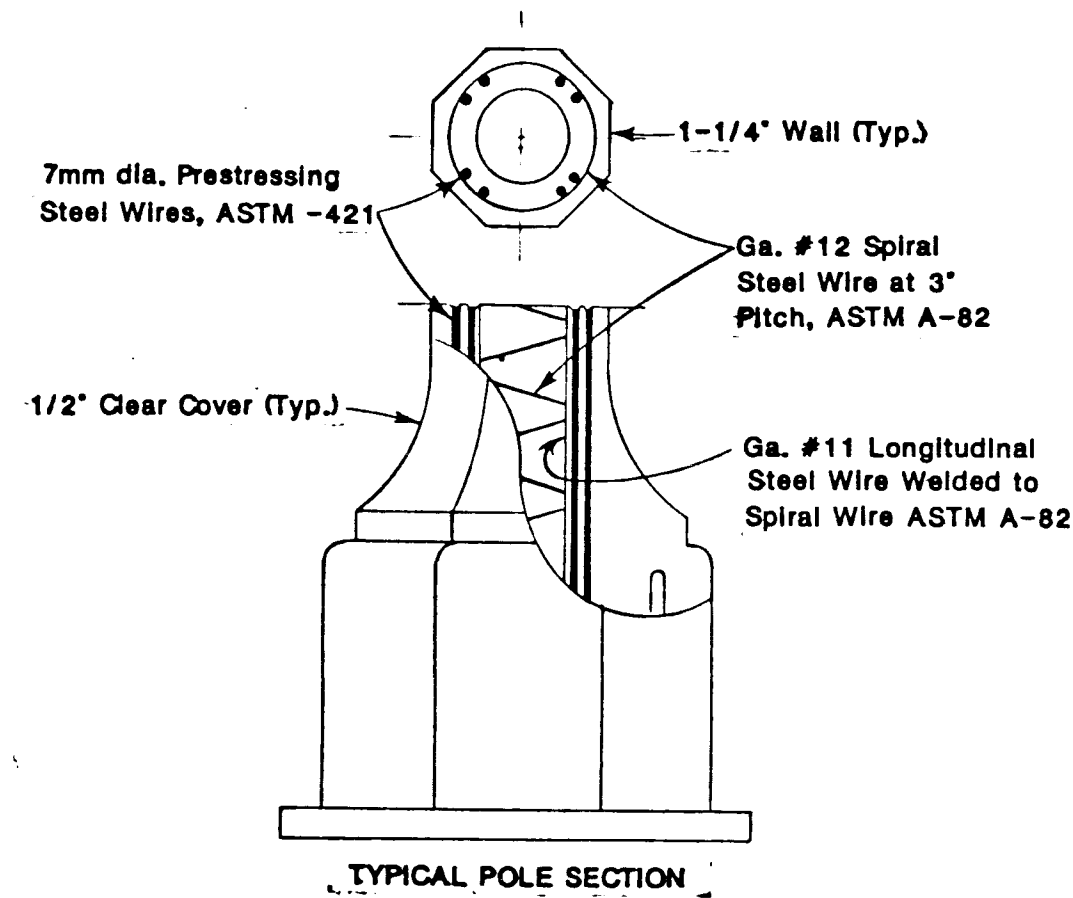
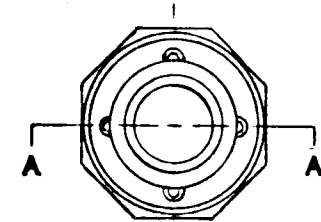
| DESIGNED BY J. ORTIZ | |
|-----------------------|-----------|
| DATE 2/90 | DATE 2/90 |
| DRAWN BY P. HERNANDEZ | DATE 2/90 |
| CHECKED BY J. ORTIZ | DATE 2/90 |

| CITY OF ALBUQUERQUE PUBLIC WORKS DEPARTMENT ENGINEERING GROUP | |
|---|--|
| TITLE: STREET LIGHT IMPROVEMENTS FOR CENTRAL AVENUE BETWEEN JOHN ST. AND LOCUST ST. | |

| APPROVALS | |
|--------------|--------|
| ENGINEER | DATE |
| D.R.C. Chair | 5/1/90 |
| Trans. Dev | 5/1/90 |
| Utility Dev | 5-1-90 |
| DATE | 5-1-90 |

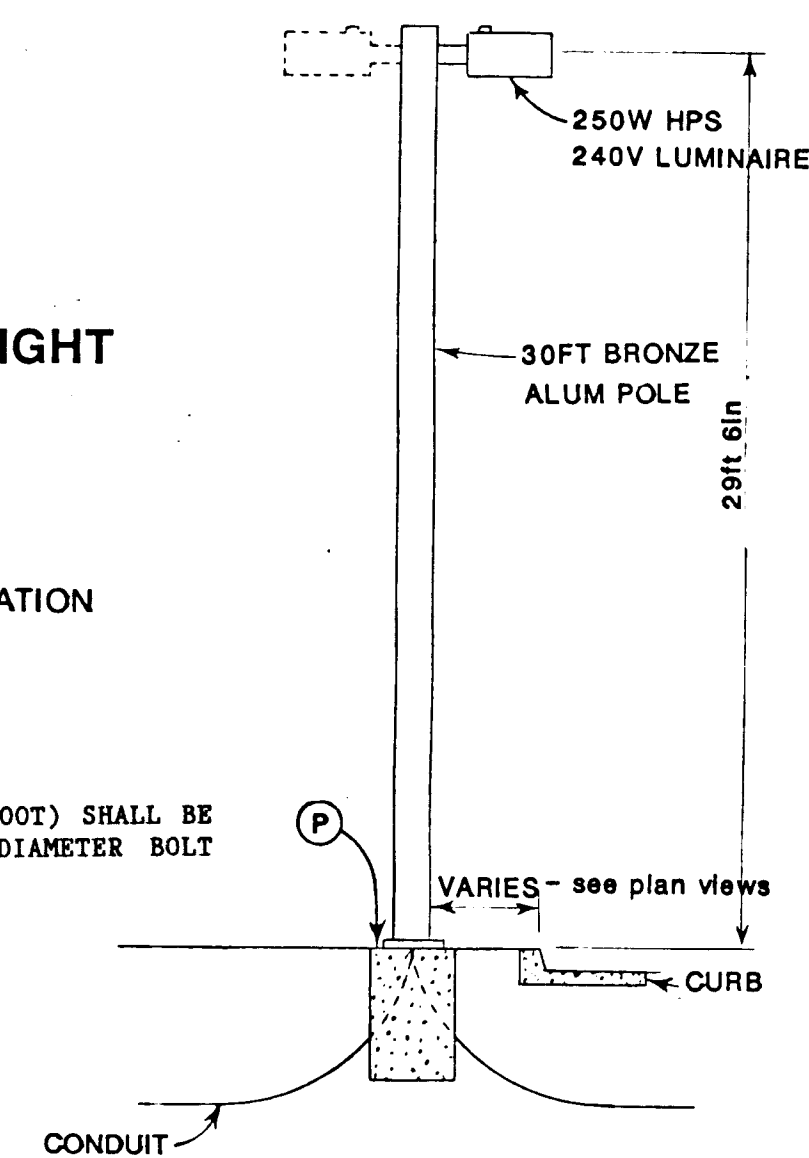
| DRAWING NO. | |
|-------------|---------|
| 4039.90 | K-14,15 |

| SHEET 4 OF 8 | |
|--------------|--|
| DATE 2/90 | |

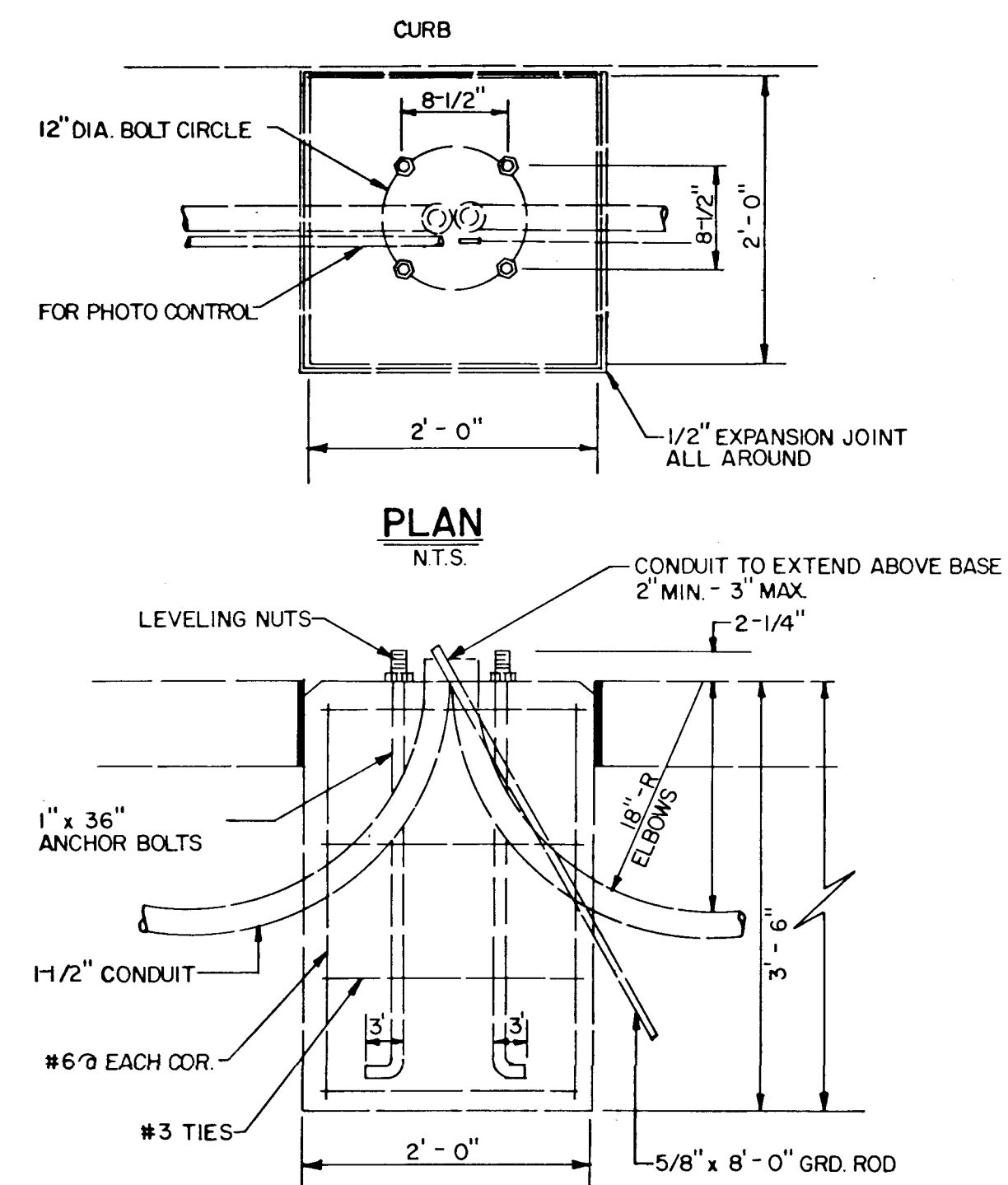


(P) CITY OF ALBUQUERQUE
TRAFFIC STREET LIGHT FOUNDATION
DWG. 2530
TYPE I

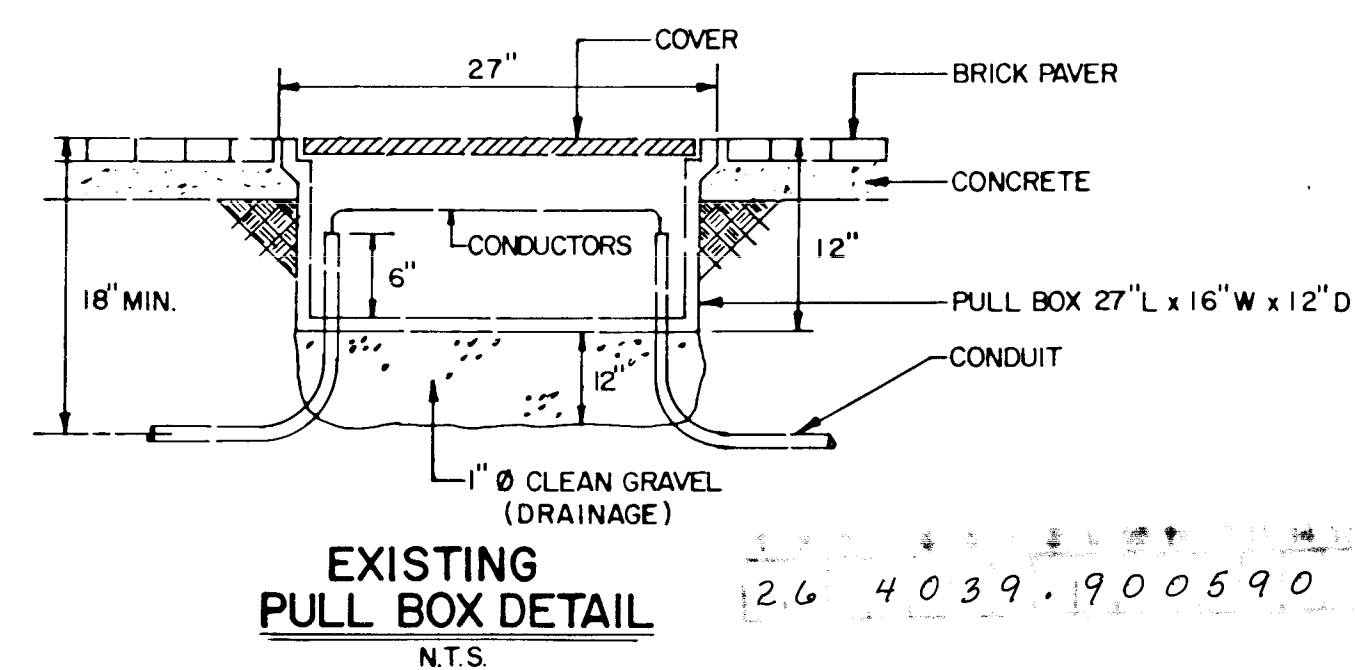
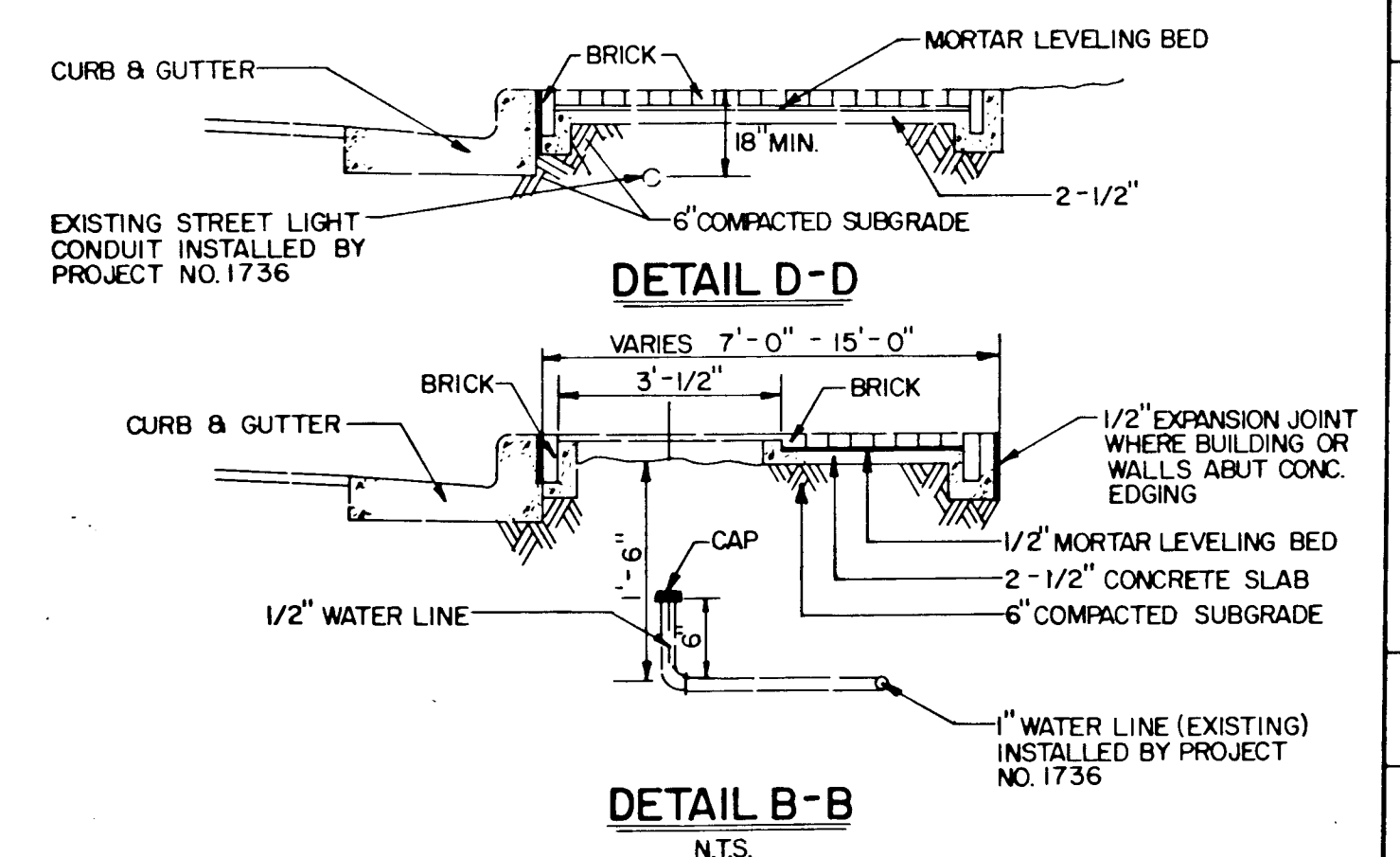
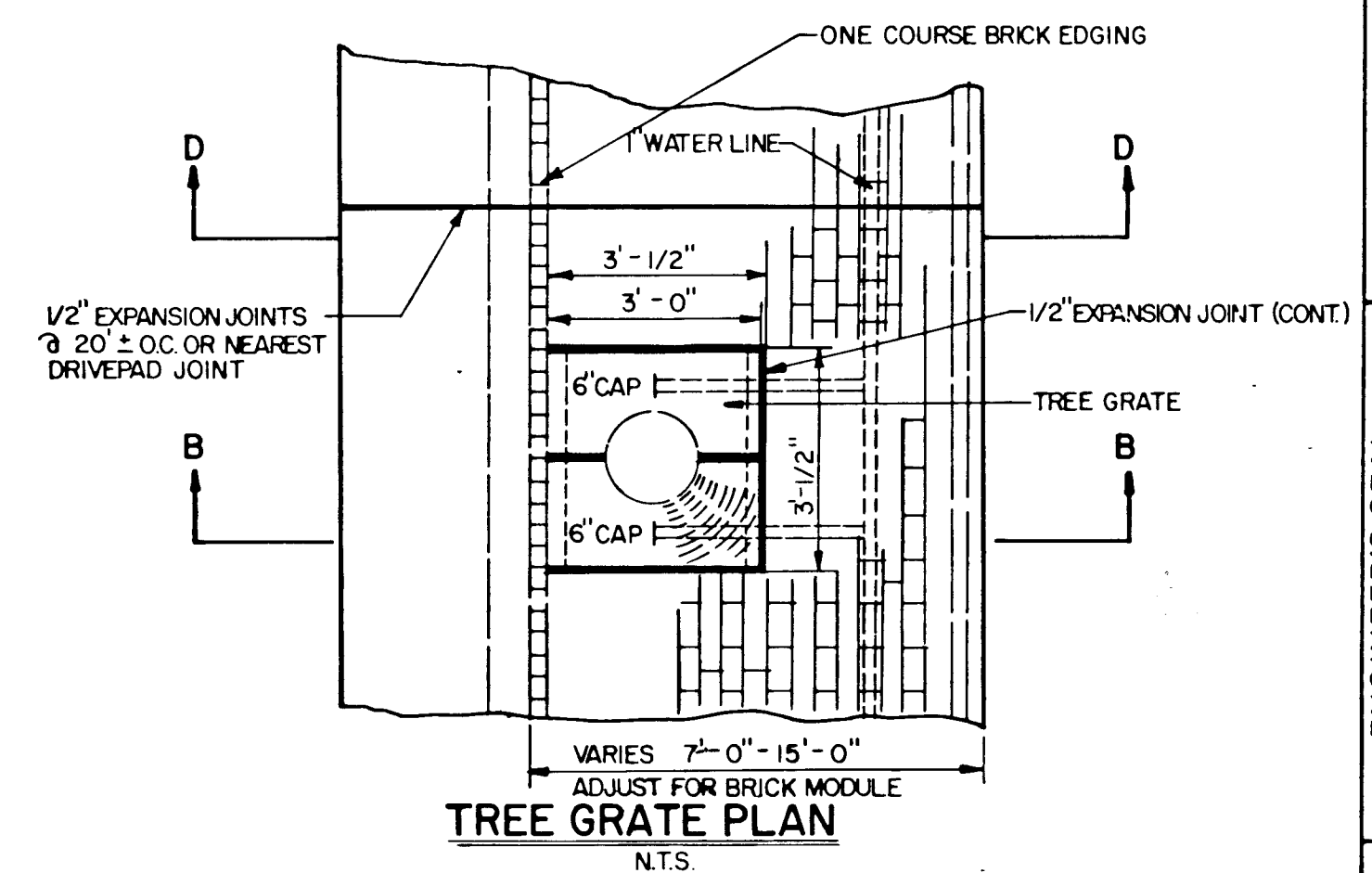
" ALL SHOEBOX TYPE STREET LIGHTS (30 FOOT) SHALL BE DESIGNED TO ACCOMMODATE 11" THRU 12" DIAMETER BOLT CIRCLES."



| MATERIAL LIST | | |
|---------------|-------|--------------------------|
| ITEM | QUAN. | DESCRIPTION |
| E | | 600V 2/C #10 UF CU CABLE |
| F | | OR 600V #2 AL CABLE |
| G | 1 | #6 CU WIRE |
| H | 1 | 5/8in x 8ft GROUND ROD |
| J | 1 | 5/8in GROUND ROD CLAMP |
| K | 2 | FUSEHOLDER |
| L | 1 | STLT POLE GROUNDING LUG |
| M | 2 | 3-WAY STLT CONNECTORS |
| N | 2 | 5A LIMITRON FUSE |
| P | 1 | POUR-IN-PLACE FOUND. |



**EXISTING
STREET LIGHT FOUNDATION**
N.T.S.



NOTE: REFER TO SHEETS 2, 3, 4
FOR LOCATIONS.

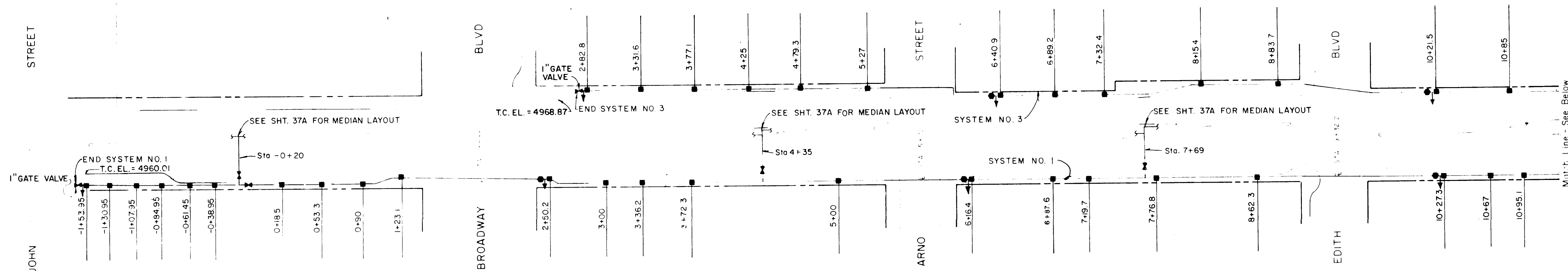
NOTES:

1. PULL BOXES SHALL BE ASSOCIATED PLASTICS, OR
EQUAL, COMPLETE WITH BOX AND COVER, SUITABLE FOR
PEDESTRIAN TRAFFIC. BOXES SHALL HAVE SOLID BASE
AND COVERS SHALL BE BOLT DOWN TYPE WITH PENT
HEAD BOLTS.
2. PULL BOXES FOR "STREET LIGHTING" & "FIRE ALARM"
MARKED AS SUCH BY PROJECT NO. 1736.

[illegible]

WEST SIDE LAYOUT

| RECORD INFORMATION | | | |
|--------------------|-------------|------|------|
| CONTRACTOR | Wiley | DATE | 1983 |
| WORK | Drainage | DATE | 1983 |
| STAKED BY | J. H. Kane | DATE | 1983 |
| INSPECTOR'S | | DATE | |
| APPROVED BY | City | DATE | |
| FIELD | | DATE | |
| VERIFICATION BY | | DATE | |
| DESIGNED BY | Fred Denney | DATE | 1983 |
| CHECKED BY | | DATE | |



FOR INFORMATION ONLY

SCALE: 1" = 50'

- DOUBLE CHECK VALVE ASSEMBLY (RAINBIRD RPT)
- TREE GRADE AREA W/ TREE
- WATER GATE VALVE
- WATER METER
- ELECTRIC VALVE W/PRESSURE CONTROL OPTION (RAINBIRD 100 EFA)
- ELECTRIC CONTROL BOX (RAINBIRD RC-12B W/LTM-T)
- CHECK VALVE (PER CHANGE ORDER NO. 6, ITEM NO. 220.)
- 2" B CHECK VALVES (FLO-CONTROL SERIES # 1011)
- SYSTEM NO. 1W
- SYSTEM NO. 2W
- SYSTEM NO. 3W
- FILTER

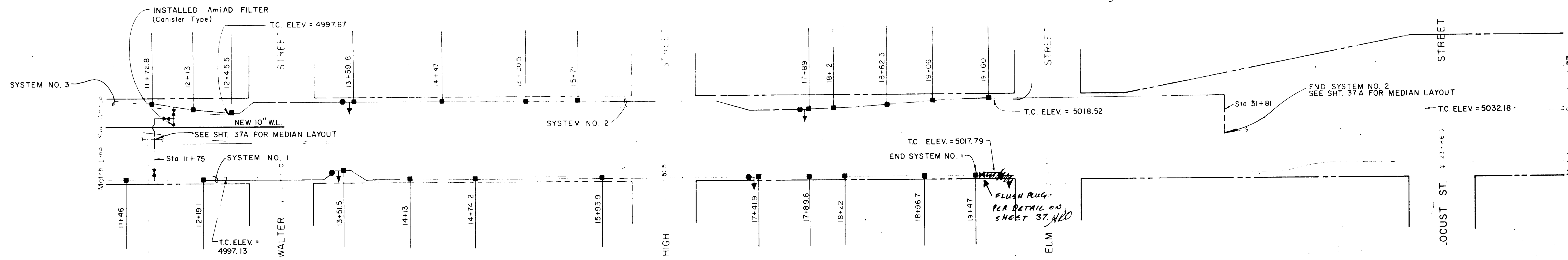
NOTE: ALL LINES UNDERNEATH ROADWAYS WILL BE 1" TYPE L HARD DRAWN COPPER LINE. ALL OTHER WILL BE 1" P.V.C.

- GENERAL NOTES:**
- 1. TREES HAVE 2 SALCO SIX EMITTER W/ PRONGS PER EMITTER CAPPED
 - 2. SHRUBS HAVE 1 SALCO ONE EMITTER PER SHRUB

DESIGN PRESSURES

| ELEC VALVES - TOP END / BOTTOM END | |
|------------------------------------|-----------------------|
| SYSTEM #1W | 31psi - 20psi / 42psi |
| SYSTEM #2W | 41psi - 20psi / N/A |
| SYSTEM #3W | 22psi - N/A / 35psi |

THESE CALCULATIONS DID NOT TAKE INTO CONSIDERATION THE 2" B CHECK VALVES IN EACH BLOCK



PROPOSED SPRINKLING SYSTEM

SEE SHEETS 26, 27 & 29 FOR DETAILS

TRANSPORTATION DEPARTMENT SPRINKLING SYSTEM CENTRAL AVENUE IMPROVEMENTS

Fred Denney & Associates, Inc.
ENGINEERS PLANNERS
ALBUQUERQUE, NEW MEXICO 87107

4039.90

SHEET 8 OF 8

6" H 14' El 4968.72 NE Cor of Intersection
Broadway & Central in Sidewalk; 8'
3.79 From Back of Curb on Broadway & Central.
12/80 5" H 15B El 5008.07 SW Cor of Intersection
of High & Central; 31.95 South of &
of Central & 26.3' West of &
High St.

362.11 S L Y
362.4 S L Y

14 & 15

DESIGNED BY L.W.G. & F.D.
DRAWN BY F.D.T.
CHECKED BY

DATE 5-1-80
DATE 5-1-80