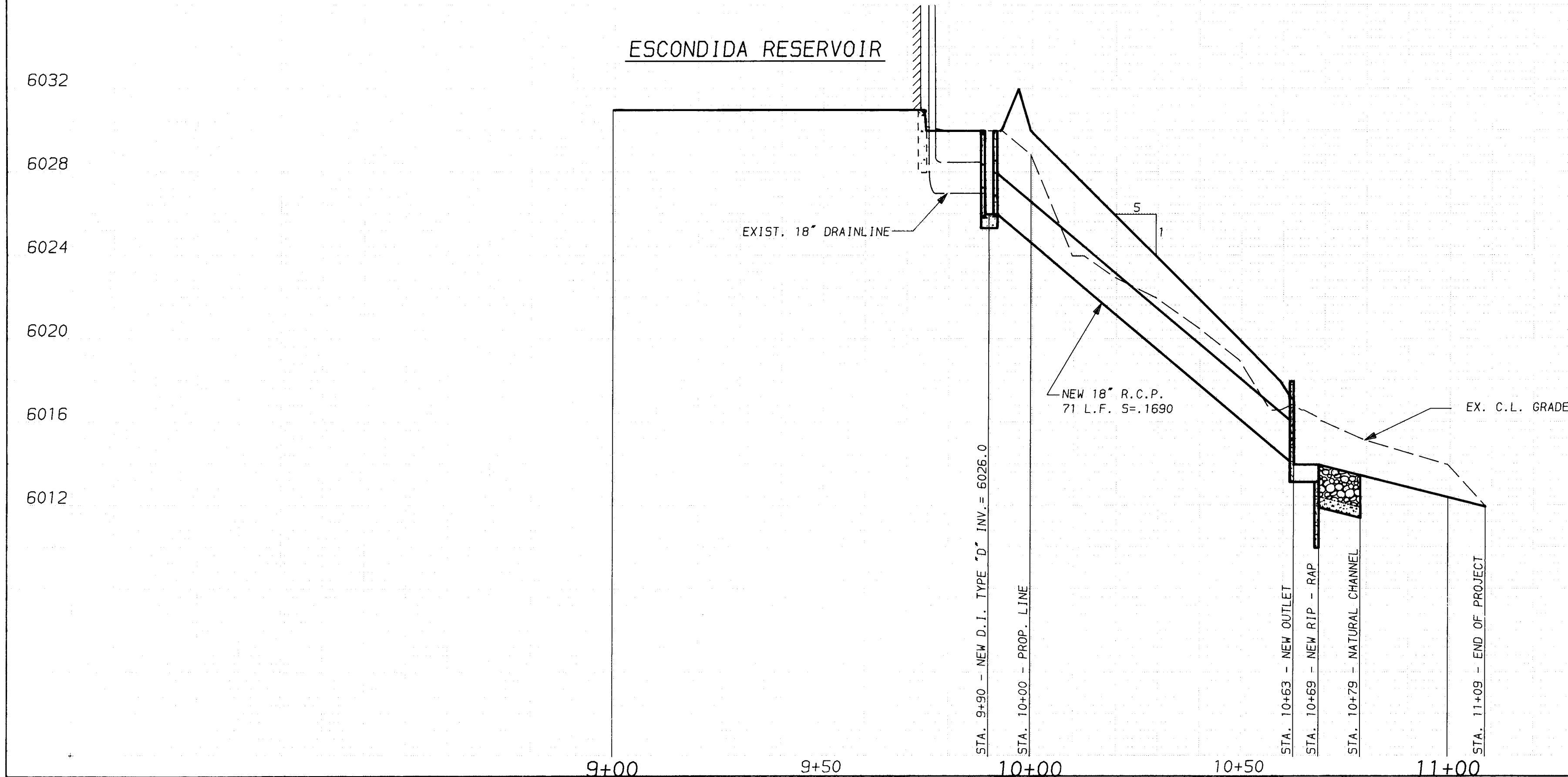


PROFILE SCALE:
HORIZONTAL: 1" = 20'
VERTICAL: 1" = 4'



SCALE: 1"=20'

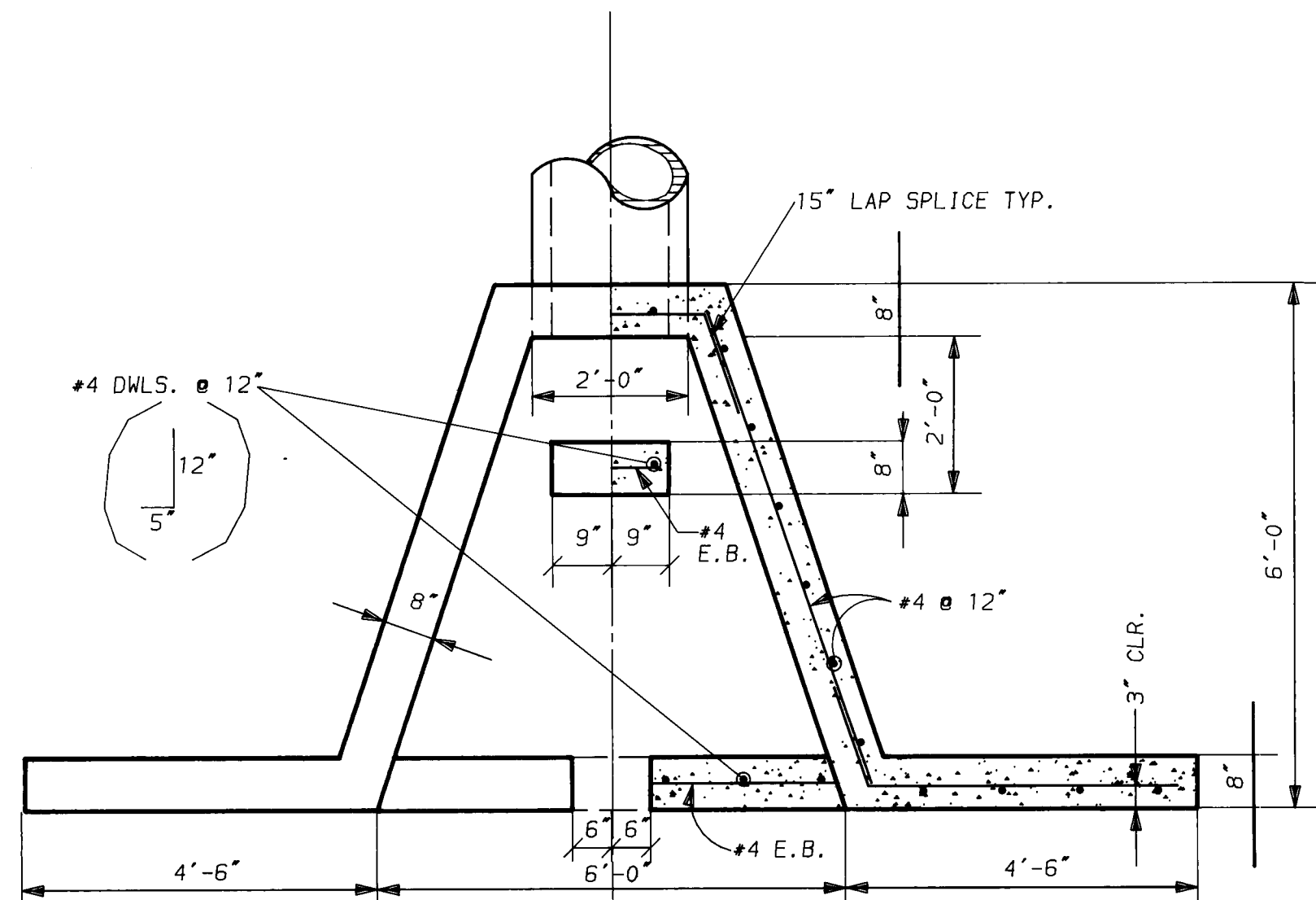
- ### KEYED NOTES
- 1 REMOVE & DELIVER EXISTING FENCE TO THE CITY YARD. REMOVE EXISTING MATERIAL WHICH HAS ACCUMULATED BEHIND EXISTING FENCE. REPLACE EXISTING FENCE WITH NEW 6" CHAIN LINK FENCE PER C.O.A. STD. DWG. NO. 2252. INSTALL 3 STRANDS OF BARBED WIRE ON TOP OF NEW FENCE.
 - 2 INSTALL NEW 16' DOUBLE GATE PER C.O.A. STD. DWG. NO. 2252.
 - 3 REMOVE & DISPOSE OF EXISTING CONCRETE OUTLET STRUCTURE. REMOVE EX. FLAP GATE FROM EX. 18" DRAIN LINE. CUT DRAINLINE TO THE PROPER LENGTH. REATTACH FLAP GATE TO NEW END OF EX. DRAINLINE.
 - 4 CONSTRUCT NEW STORM INLET TYPE SINGLE "D" PER C.O.A. STD. DWG. NO. 2206.
 - 5 CONSTRUCT NEW BERM PER DETAIL ON SHEET 3.
 - 6 CONSTRUCT NEW CONCRETE OUTLET STRUCTURE PER DETAIL ON SHEET 3.
 - 7 CONSTRUCT NEW WIRE ENCLOSED RIPRAP PER DETAIL ON SHEET 3 & C.O.A. STD. DWG. NO. 2270.
 - 8 INSTALL NEW 18" TYPE IV RCP DRAIN LINE WITH CLASS "C" BEDDING.
 - 9 EXISTING W.V. VALVE ADJUSTED TO GRADE

- ### LEGEND
- 6010.0 NEW ELEVATION
6015.1 EXIST. ELEVATION

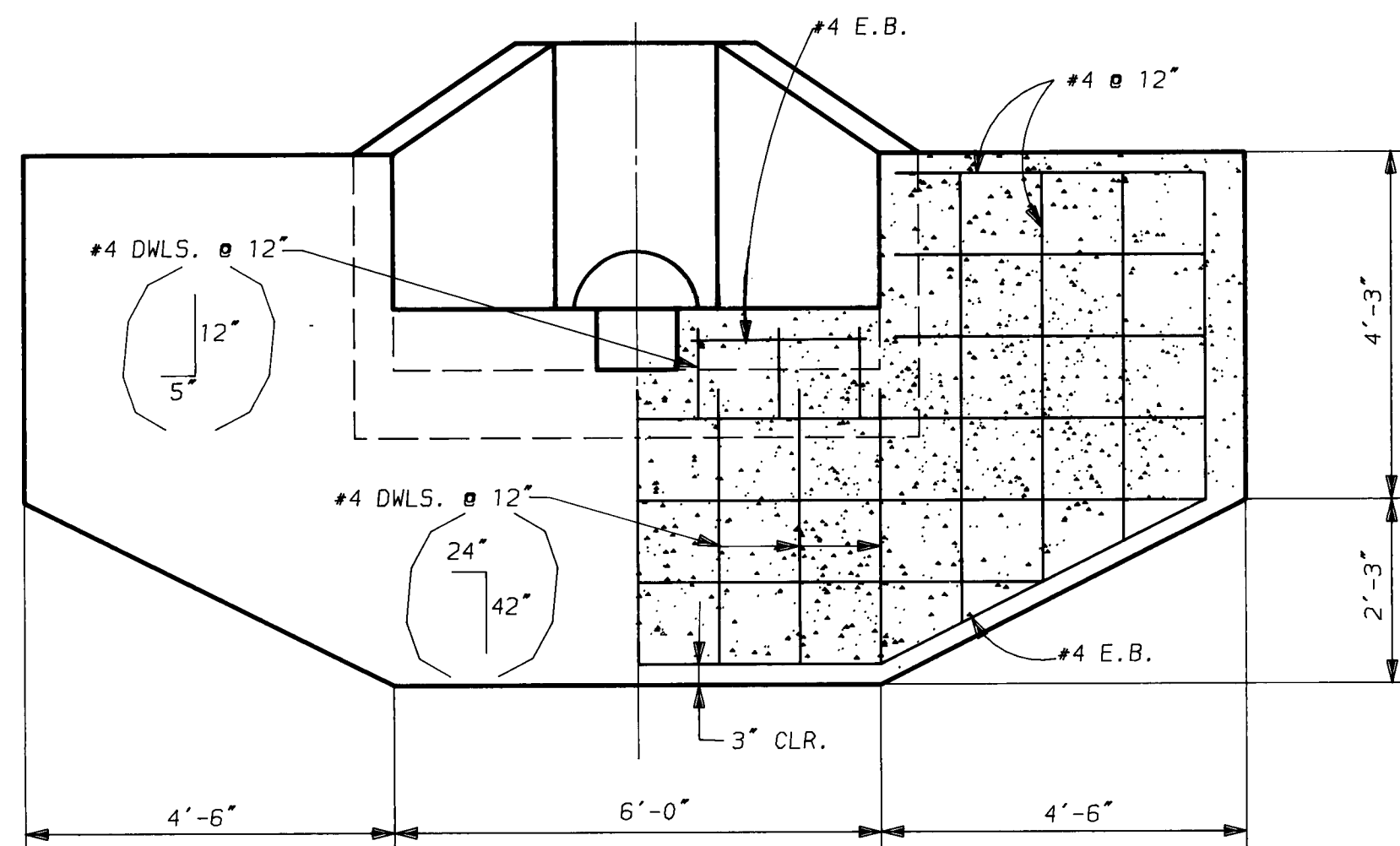
- ### ABBREVIATIONS
- EX. - EXISTING
C.L. - CENTERLINE

| | | | | | |
|----------------------------------------------------------------------|-----------|---------|-----------|----------|--------|
| CITY OF ALBUQUERQUE PUBLIC WORKS DEPARTMENT ENGINEERING GROUP | | | | | |
| TITLE: SITE IMPROVEMENTS FOR ESCONDIDA RESERVOIR PLAN AND PROFILE | | | | | |
| APPROVALS | ENGINEER | DATE | APPROVALS | ENGINEER | DATE |
| DRC Chair | CAM | 7-7-80 | | | |
| Trans. Dev | W.A. RHO | 7-6-80 | | | |
| Utility Dev | R.W. Kane | 7-5-80 | | | |
| LYD | CAM | 7-9-80 | | | |
| DRAWING NO. | 4074.90 | MAP NO. | M-23 | SHEET | 2 OF 3 |

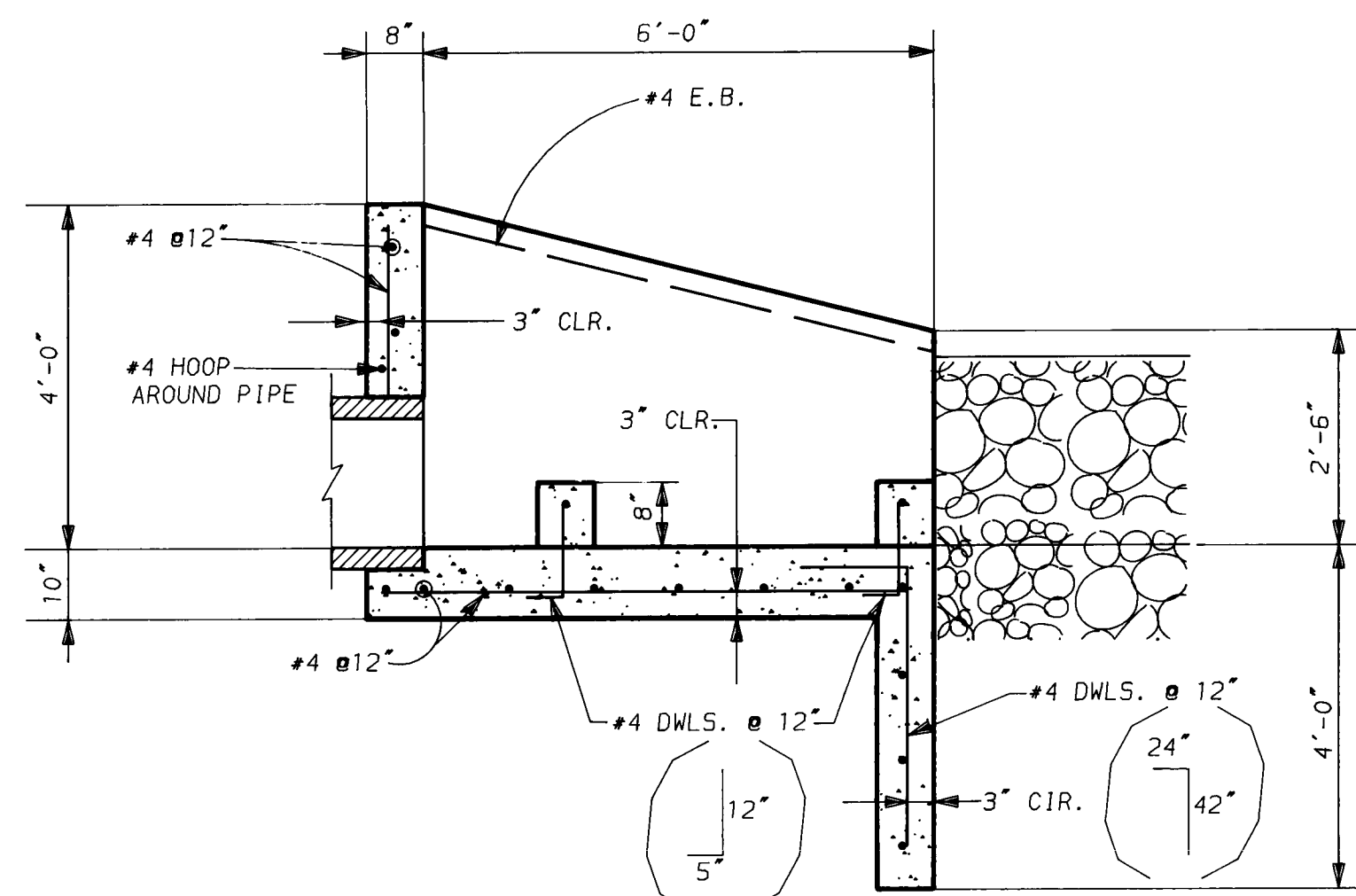
| | | | | | |
|-----------------|--------------------|-------------------|----------------------|--------------|------|
| ENGINEER'S SEAL | SURVEY INFORMATION | BENCH MARKS | AS BUILT INFORMATION | PRIDE CONST. | |
| | | | | C.O.A. | DATE |
| | NO. 4074 | BY RAY GALLEGO | DATE 12-89 | INSPECTED BY | |
| | | | | C.O.A. | |
| | | | | DATE | |
| | | | | DATE | |
| | NO. | BY | DATE | REVISIONS | |
| | | | | DESIGN | |
| | | | | DATE | |
| | | | | DATE | |
| | NO. | DATE | DATE | CHECKED BY | |
| | | | | DATE | |
| | | | | DATE | |
| | | | | DATE | |



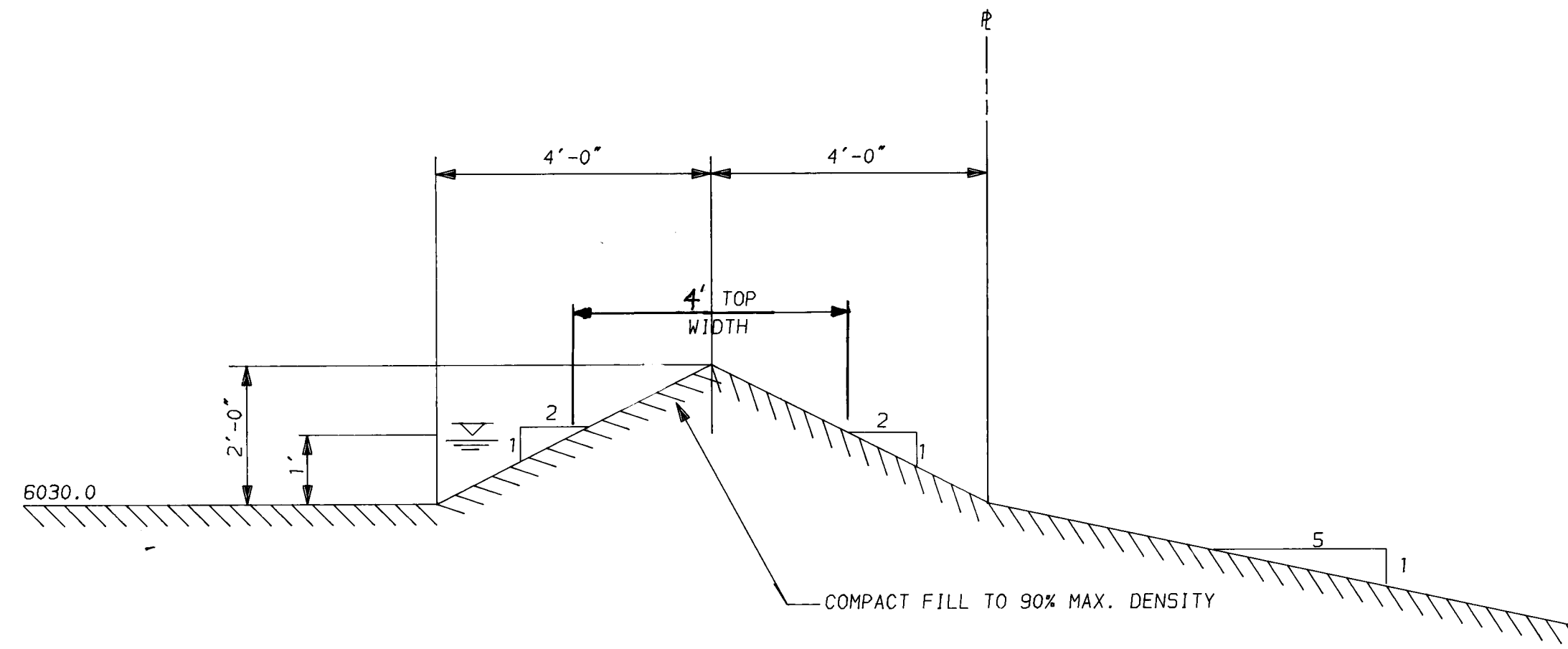
PLAN
OUTLET STRUCTURE DETAIL
SCALE: 1" = 2'-0"



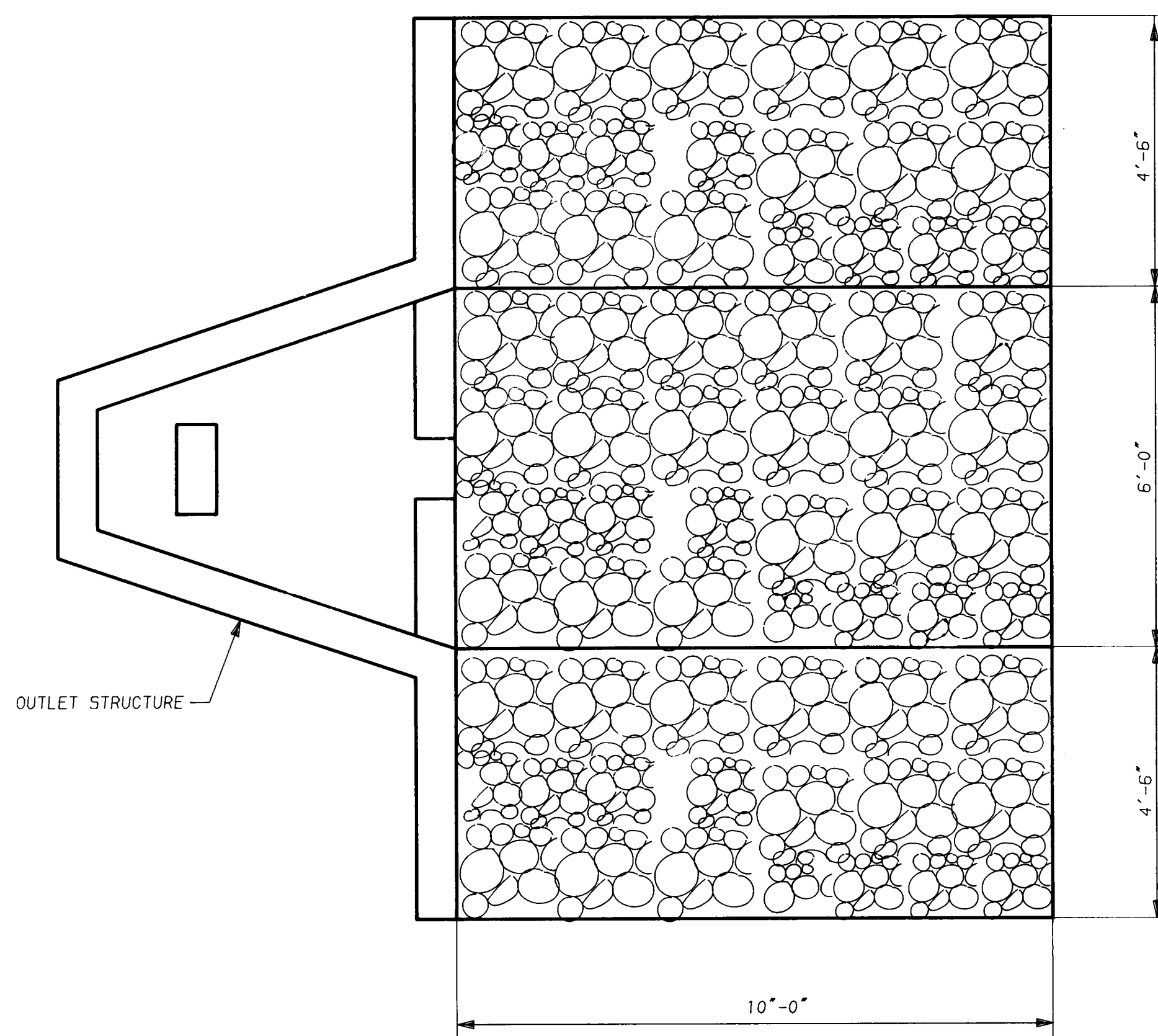
ELEVATION
OUTLET STRUCTURE DETAIL
SCALE: 1" = 2'-0"



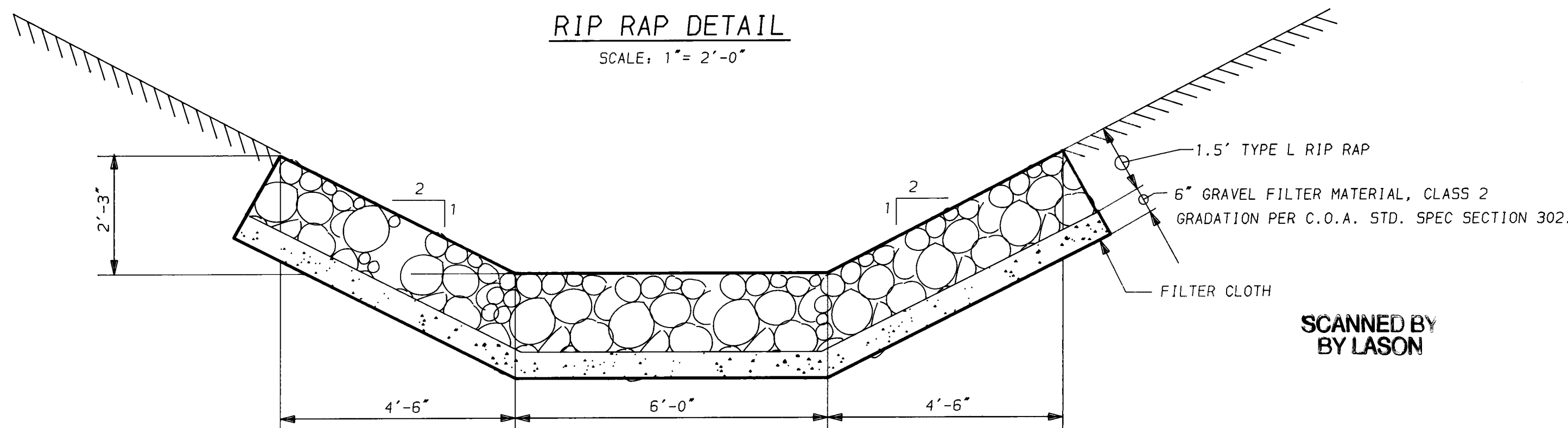
SECTION
OUTLET STRUCTURE DETAIL
SCALE: 1" = 2'-0"



BERM DETAIL
SCALE: 1" = 2'-0"



PLAN
RIP RAP DETAIL
SCALE: 1" = 2'-0"



SECTION
RIP RAP DETAIL
SCALE: 1" = 2'-0"

ABBREVIATIONS

CLR. - CLEAR
TYP. - TYPICAL
E.B. - EDGE BAR
C.O.A. - CITY OF ALBUQ.

| CITY OF ALBUQUERQUE PUBLIC WORKS DEPARTMENT ENGINEERING GROUP | | | | | |
|---------------------------------------------------------------------|-----------|---------|-----------|----------|--------|
| TITLE: SITE IMPROVEMENTS FOR ESCONDIDA RESERVOIR DETAILS | | | | | |
| APPROVALS | ENGINEER | DATE | APPROVALS | ENGINEER | DATE |
| D.R.C. Chair | CAM | 7-9-90 | | | |
| Trans. Dev. | N/A. RHD | 7-6-90 | | | |
| Utility Dev. | R.W. Kame | 7-5-90 | | | |
| HYD | CAM | 7-9-90 | | | |
| DRAWING NO. | 4074.90 | MAP NO. | M-23 | SHEET | 3 OF 3 |

| ENGINEER'S SEAL | | | SURVEY INFORMATION | | | BENCH MARKS | | | AS BUILT INFORMATION | | |
|-----------------|--|--|--------------------|--|--|------------------------------------------------------------------------------------------------------------------------------------------------------------------------------------------------------------------------------------------------------------------|--|--|--------------------------|--|--|
| | | | FIELD NOTES | | | THIS STATION IS LOCATED APPROXIMATELY 1100 FT. SOUTHEAST OF THE INTERSECTION OF STAGE COACH AND PEDREGOSO PL. SOUTHEAST IN FOUR HILLS. THE STATION MARK IS A STANDARD ACS BRASS TABLET STAMPED 'ACS 9-M23 1975' SET IN A CONCRETE POST .03 FT. ABOVE THE GROUND. | | | CONTRACTOR: PRIDE CONST. | | |
| | | | NO. 4074 | | | DATE 12-89 | | | WORK STAKED BY C.O.A. | | |
| | | | BY RAY GALLEGOS | | | INSPECTOR'S DATE | | | FIELD STAKED BY R.DURAN | | |
| | | | | | | | | | VERIFICATION BY R.O. | | |
| | | | | | | | | | CORRECTED BY | | |
| | | | | | | | | | MICRO-FILM INFORMATION | | |
| | | | | | | | | | RECORDED BY | | |
| | | | | | | | | | NO. | | |
| | | | | | | | | | DATE | | |

261 410 7.4 1910 131910

SCANNED BY
BY LASON