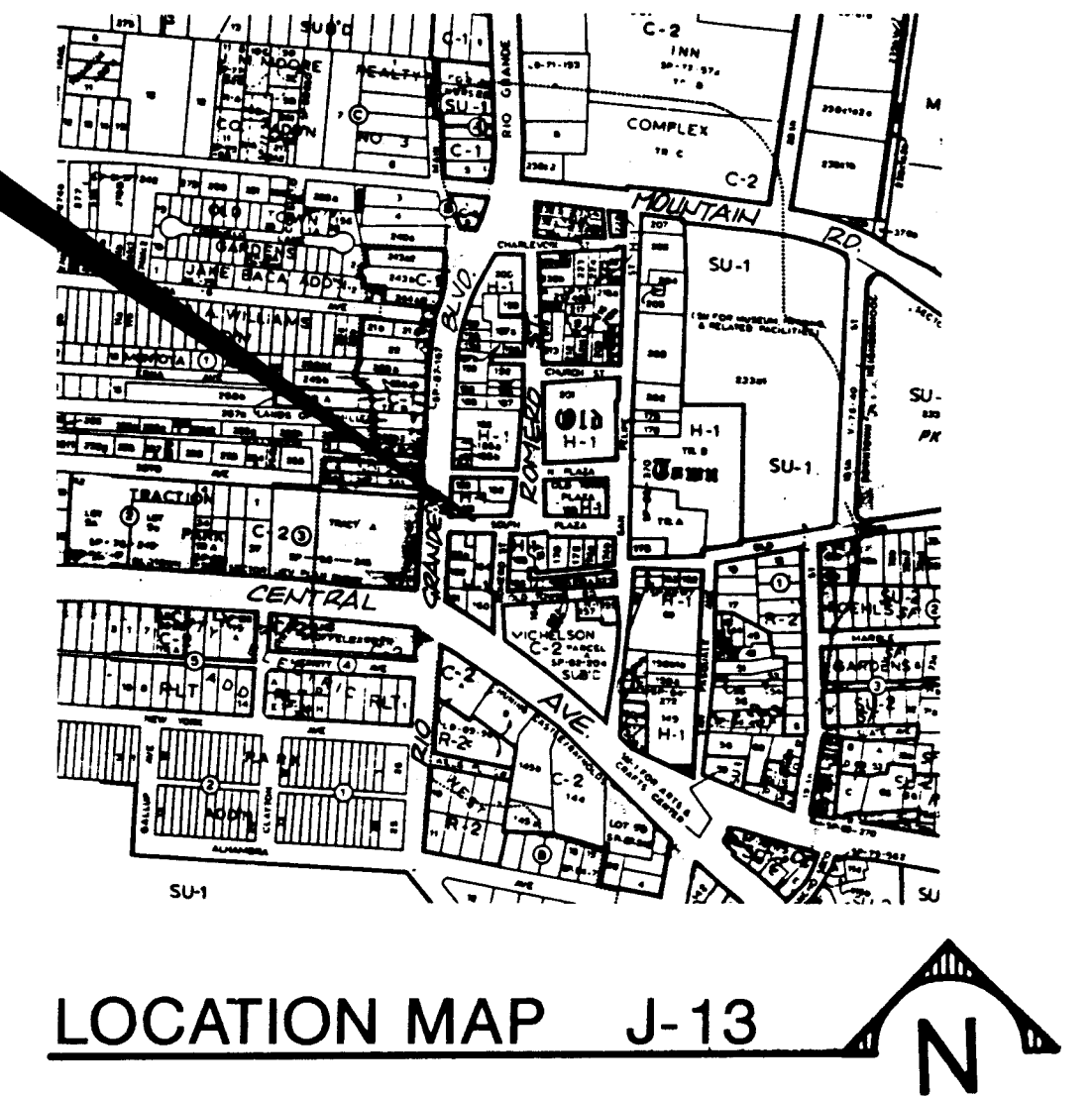


PROJECT LOCATION



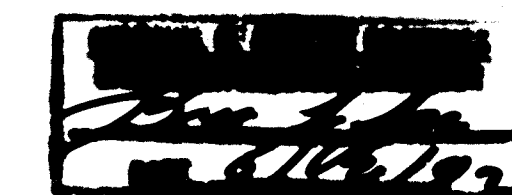
CITY OF ALBUQUERQUE PUBLIC WORKS DEPARTMENT PLANS FOR CONSTRUCTION

OLD TOWN SOUTH PLAZA STREET STORM DRAIN IMPROVEMENTS

APPROVED FOR CONSTRUCTION
Russell B. Smith 1-8-91
CITY ENGINEER DATE

INDEX TO DRAWINGS

SHEET NO.	TITLE
1	TITLE SHEET AND INDEX TO DRAWINGS
2	PLAN AND PROFILE
3	GENERAL NOTES AND DETAILS



S-SEC Smith-Scheuch
Engineering Company
Albuquerque, New Mexico

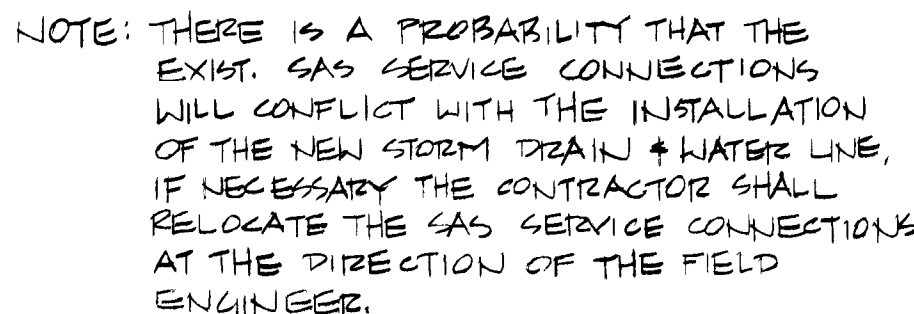
1 2 3 4 5 6 7 8 9 10 11 12 13 14 15
26 4 1 5 4 9 10 0 1 9 2

SCANNED BY
BY LASON



S-SEC NO. 89-01-04

CITY OF ALBUQUERQUE PUBLIC WORKS DEPARTMENT ENGINEERING GROUP					
TITLE: TITLE SHEET AND INDEX TO DRAWINGS					
APPROVALS	ENGINEER	DATE	APPROVALS	ENGINEER	DATE
D R C CHAIRMAN			WATER		
TRANSPORTATION			WASTEWATER		
HYDROLOGY					
PROJECT NO.	MAP NO.	SHEET	OF		
4154.90	J-13	1	3		



GENERAL NOTES

- | | | | | | |
|----|---|----|--|----|--|
| 1 | THREE (3) WORKING DAYS PRIOR TO BEGINNING CONSTRUCTION, THE CONTRACTOR SHALL SUBMIT A DETAILED CONSTRUCTION SCHEDULE TO THE CITY CONSTRUCTION COORDINATION DIVISION. TWO (2) DAYS PRIOR TO CONSTRUCTION, THE CONTRACTOR SHALL OBTAIN A BARRICADING PERMIT FROM THE CONSTRUCTION COORDINATION DIVISION. CONTRACTOR SHALL NOTIFY BARRICADE ENGINEER (788-2551) PRIOR TO OCCUPYING AN INTERSECTION. REFER TO SECTION 19 OF SPECIFICATIONS | 3 | THE CONTRACTOR IS TO EXERCISE CARE WHEN REMOVING EXISTING PAVEMENT TO AVOID DISTURBING ANY EXISTING UNDERGROUND UTILITIES. IT SHALL BE HIS RESPONSIBILITY TO COORDINATE WITH THE UTILITY COMPANIES IN ORDER TO PREVENT ANY SERVICE DISRUPTION. SEE SECTION 18 "UTILITIES", CITY OF ALBUQUERQUE, STANDARD SPECIFICATIONS FOR CONTRACTOR REQUIREMENTS. | 26 | ALL WATER VALVES AND FIRE HYDRANTS REMOVED TO BE SALVAGED AND RETURNED TO THE C.O.A. |
| 2 | THE CONTRACTOR SHALL NOTIFY THE FIELD ENGINEER NOT LESS THAN SEVEN (7) DAYS PRIOR TO STARTING WORK, IN ORDER THAT THE FIELD ENGINEER MAY TAKE NECESSARY MEASURES TO INSURE THE PRESERVATION OF SURVEY MONUMENTS. CONTRACTOR SHALL NOT DISTURB PERMANENT SURVEY MONUMENTS WITHOUT THE CONSENT OF THE FIELD ENGINEER AND SHALL NOTIFY THE FIELD ENGINEER AND BEAR THE EXPENSE OF REPLACING ANY THAT MAY BE DISTURBED WITHOUT PERMISSION. REPLACEMENT SHALL BE DONE ONLY BY THE FIELD ENGINEER. WHEN A CHANGE IS MADE IN THE FINISHED ELEVATION OF THE PAVEMENT OF ANY ROADWAY IN WHICH A PERMANENT SURVEY MONUMENT IS LOCATED, CONTRACTOR SHALL, AT HIS OWN EXPENSE, ADJUST THE MONUMENT COVER TO THE NEW GRADE UNLESS OTHERWISE SPECIFIED. REFER TO SECTION 4 OF SPECIFICATIONS | 13 | WHEN ABUTTING NEW PAVEMENT TO EXISTING INTERSECTING STREETS, SAW CUT EXISTING PAVEMENT TO A STRAIGHT LINE AND AT RIGHT ANGLES AND REMOVE ANY BROKEN OR CRACKED PAVEMENT. NO DIRECT PAYMENT SHALL BE MADE FOR SAW CUTTING. | 27 | THE CONTRACTOR SHALL MAINTAIN WATER AND SEWER SERVICE DURING CONSTRUCTION. |
| 3 | THE SPECIFICATIONS USED FOR THIS PROJECT ARE THE CITY OF ALBUQUERQUE STANDARD SPECIFICATIONS FOR PUBLIC WORKS CONSTRUCTION, LATEST EDITION. | 14 | ALL GAS VALVES, GAS MANHOLES, ELECTRICAL MANHOLES, TELEPHONE MANHOLES, AND UTILITY POLES WILL BE ADJUSTED TO GRADE BY EACH UTILITY COMPANY. CONTRACTOR SHALL CONTACT EACH AFFECTED UTILITY COMPANY A MINIMUM OF ONE WEEK PRIOR TO WHEN THE WORK NEEDS TO BE DONE. | | |
| 4 | DISPOSAL OF ALL WASTE MATERIALS SHALL BE IN CITY-APPROVED WASTE AREAS SECURED BY AND AT THE EXPENSE OF THE CONTRACTOR. | 15 | THE EXISTING CURB AND GUTTER IS NOT TO BE DISTURBED DURING CONSTRUCTION. THE CONTRACTOR SHALL BE RESPONSIBLE FOR THE REPLACEMENT OF ANY CURB AND GUTTER DISTURBED DURING CONSTRUCTION AT HIS OWN EXPENSE. | | |
| 5 | ALL OFFSETS SHOWN ARE FROM CENTERLINE OF SURVEY. | 16 | THE CONTRACTOR SHALL NOTIFY THE UTILITY COMPANIES BY CALLING NEW MEXICO ONE CALL SYSTEM 260-1990 TWO (2) WORKING DAYS PRIOR TO COMMENCING WORK IN AREAS NEAR UNDERGROUND UTILITY LINES. | | |
| 6 | ALL WATER VALVE BOXES AND MANHOLES IN THE STREET CONSTRUCTION ARE TO BE ADJUSTED TO FINISH GRADE AND NO DIRECT PAYMENT SHALL BE MADE FOR THOSE ITEMS OF WORK. | 17 | CONTRACTOR SHALL MAKE ALL WATER VALVES AND MANHOLES ACCESSIBLE TO THE CITY AT ALL TIMES. | | |
| 7 | THE WATER SYSTEMS DIVISION (857-8200) SHALL BE NOTIFIED THREE (3) WORKING DAYS IN ADVANCE OF ANY WORK WHICH MAY AFFECT THE EXISTING PUBLIC WATER FACILITIES. REFER TO SECTION 13 OF SPECIFICATIONS | 18 | CONTRACTOR SHALL PLACE BITUMINOUS MATERIAL WITH THE USE OF A LAYDOWN MACHINE WHERE PAVEMENT IS 10 FEET IN WIDTH OR WIDER. | | |
| 8 | THE AIR POLLUTION CONTROL REGULATIONS OF THE ALBUQUERQUE-BERNALILLO COUNTY AIR QUALITY CONTROL BOARD LIMIT EMISSION OF PARTICULATE MATTER AND THE USE OF CUT BACK ASPHALT. | 19 | ALL SUBGRADE AND SUBBASE MATERIAL ENCOUNTERED IN PAVEMENT REMOVAL AND REPLACEMENT THAT IS DETERMINED BY THE FIELD ENGINEER TO MEET THE SPECIFICATIONS, CAN BE REUSED. HOWEVER, THE MATERIAL WILL BE PROCESSED AND COMPACTED TO MEET MOISTURE CONTENT AND PERCENT COMPACTION REQUIRED BY THE SPECIFICATIONS. | | |
| 9 | FIFTY (50) TON ROLLERS OR GREATER SHALL NOT BE USED ON THIS PROJECT. THE REQUIRED COMPACTION SHALL BE EFFECTED BY OTHER TYPES OF ROLLING EQUIPMENT. | 20 | CONTRACTOR SHALL NOT PAVE OVER ANY SURFACE FEATURE, I.E., GAS VALVE, MANHOLE COVER, ETC. WITHOUT PRIOR APPROVAL FROM THE FIELD ENGINEER. | | |
| 10 | ALL EXCAVATION SHALL BE GOVERNED BY FEDERAL, STATE AND LOCAL LAWS, RULES, AND REGULATIONS CONCERNING CONSTRUCTION SAFETY AND HEALTH. | 21 | CONTRACTOR SHALL CONFINE HIS WORK TO WITHIN THE CONSTRUCTION LIMIT. | | |
| 11 | ALL SIGNS AND CODING WILL BE IN ACCORDANCE WITH THE MANUAL OF UNIFORM TRAFFIC CONTROL DEVICES FOR STREETS AND HIGHWAYS CURRENT EDITION PUBLISHED BY THE U.S. DEPARTMENT OF TRANSPORTATION. | 22 | THE CONTRACTOR SHALL MAINTAIN SIDEWALK PEDESTRIAN TRAFFIC TO BUSINESSES. | | |
| | | 23 | THE USE OF VIBRATORY ROLLERS ON THIS PROJECT IS PROHIBITED UNLESS APPROVED BY THE FIELD ENGINEER. | | |
| | | 24 | THE CONTRACTOR SHALL COMPLY WITH TRAFFIC CONTROL SPECIFICATIONS PER SECTION 15, CITY OF ALBUQUERQUE STANDARD SPECIFICATIONS. | | |
| | | 25 | SHUT-OFF OF WATER VALVES TO BE PERFORMED BY WATER SYSTEMS DIVISION (857-8200). | | |

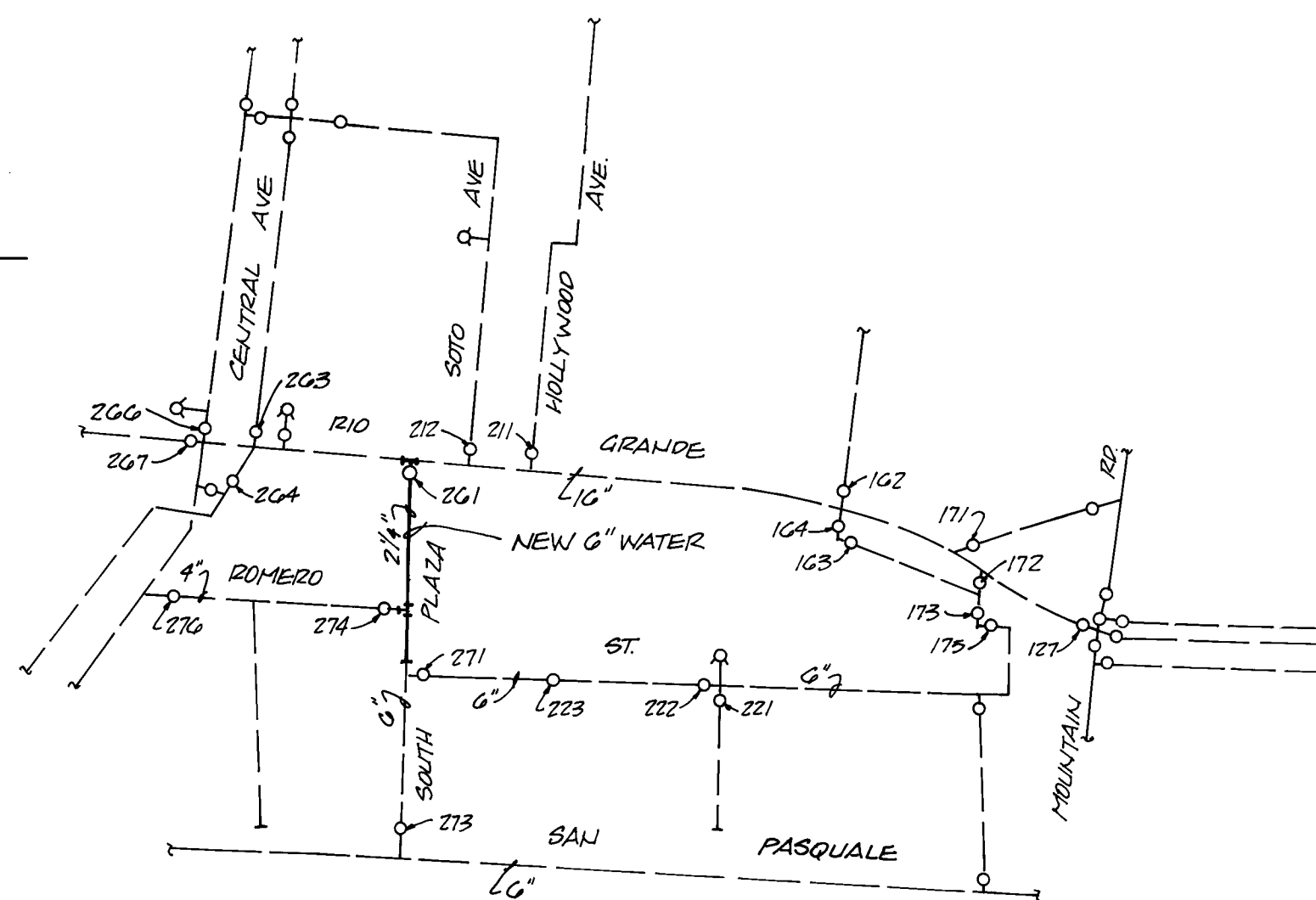
NOTES

SCENARIO NO. 1

- A. SHUT VALVES 271, 273 & 274
B. SHUT VALVE 261 & ABANDON IN PLACE
C. INSTALL 10x16x6 TAPPING SLEEVE NORTH
OF VALVE 261 IN RIO GRANDE
(VALVE 261 NOT RECOVERED DURING SURVEY)

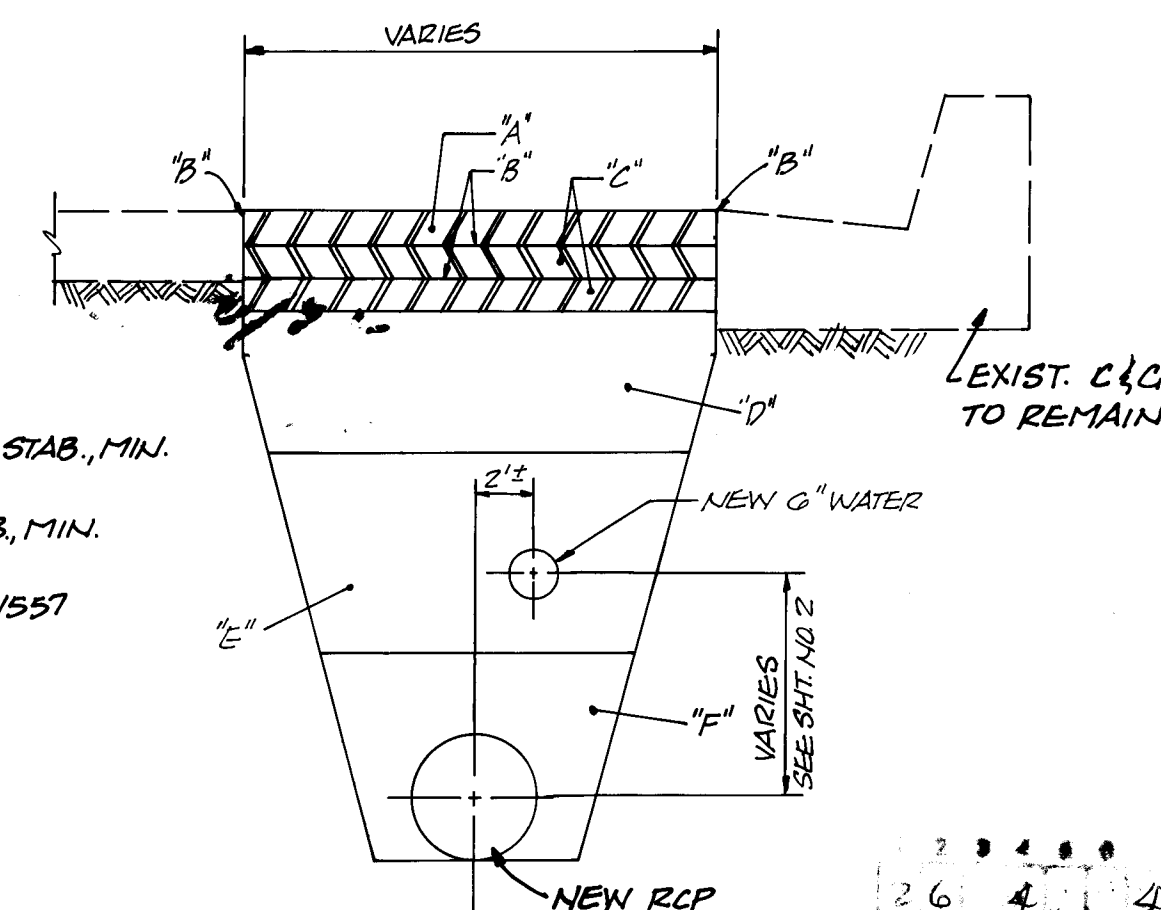
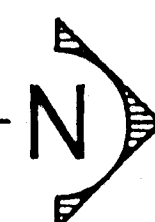
SCENARIO NO. 2

- A. SHUT VALVES 127, 162, 164, 171, 172, 211, 212, 263, 264, 266, 267, 273, 274
- B. INSERT 16x16x6 TEE IN RIO GRANDE



WATER VALVE SHUT-OFF PLAN

N.T.S.



PAVEMENT REPLACEMENT SECTION

N.T.S

SURVEY INFORMATION		BENCH MARKS	AS BUILT INFORMATION
NO.	FIELD NOTES		
	BY DATE		CONTRACTOR <i>JR HALE</i>
			INSPECTOR'S NAME <i>STANLEY</i> DATE
10283	GEORGE MARQUEZ JR 1/1/90		FIELD VERIFICATION BY DATE <i>O'Herrera</i> <i>2</i> <i>24/92</i>
			ADJUSTED BY DATE
			CORRECTED BY DATE
			<i>MICRO-FILM INFORMATION</i>
			RECORDED BY DATE
			NO

[illegible]

S-SEC Smith-Scheuch
Engineering Company
Albuquerque, New Mexico

CITY OF ALBUQUERQUE
PUBLIC WORKS DEPARTMENT
ENGINEERING GROUP

TITLE: OLD TOWN SOUTH PLAZA ST. STORM DRAIN IMPROVEMENTS

GENERAL NOTES AND DETAILS

APPROVALS	ENGINEER	DATE	APPROVALS	ENGINEER	DATE
DRC CHAIRMAN	<i>[Signature]</i>	11-3-97	WATER	<i>[Signature]</i>	11/3/97
TRANSPORTATION	<i>[Signature]</i>	12-24-97	WASTE WATER	<i>[Signature]</i>	12-28-97
HYDROLOGY	<i>[Signature]</i>	12/24/97			

PROJECT NO.	4154.90	MAP NO.	J-13	SHEET	3	OF	3
-------------	---------	---------	------	-------	---	----	---