

FINAL DESIGN PLANS
FOR
CITY OF ALBUQUERQUE



SAD NO. 223 - PART I
MASTER PLAN SANITARY SEWER LINE

GENERAL NOTES

1. ALL WORK DETAILED ON THESE PLANS, EXCEPT AS OTHERWISE STATED OR PROVIDED SHALL BE CONSTRUCTED IN ACCORDANCE WITH THE CITY OF ALBUQUERQUE STANDARD SPECIFICATIONS FOR PUBLIC WORKS CONSTRUCTION - 1986 EDITION.

2. TWO (2) WORKING DAYS PRIOR TO ANY EXCAVATION, CONTRACTOR MUST CONTACT ONE CALL SYSTEM, INC., 260-1990, FOR LOCATION OF EXISTING UTILITIES. CONTRACTOR SHALL COORDINATE ALL UTILITY WORK INCLUDING CUT OFF OF EXISTING UTILITIES FOR NEW CONNECTIONS (FIRE PROTECTION, DOMESTIC WATER, SEWER, STORM DRAIN, GAS PIPING, ETC.) WITH ENGINEER, OWNER, AND LOCAL UTILITY REPRESENTATIVES.

3. THESE DRAWINGS REFLECT INFORMATION ON UTILITIES GATHERED BY SITE INSPECTION, DISCUSSIONS WITH MUNICIPAL OFFICIALS, AND PREVIOUS CONSTRUCTION DRAWINGS. IT IS POSSIBLE THAT THE EXACT LOCATION OF LINES AND UTILITY CONNECTION POINTS IN THE VICINITY OF THE REQUIRED WORK MAY BE DIFFERENT FROM THE LOCATION SHOWN ON THIS DRAWING. PRIOR TO CONSTRUCTION, THE CONTRACTOR SHALL EXCAVATE AND VERIFY THE HORIZONTAL AND VERTICAL LOCATIONS OF ALL OBSTRUCTIONS. SHOULD A CONFLICT EXIST, THE CONTRACTOR SHALL NOTIFY THE ENGINEER SO THAT THE CONFLICT CAN BE RESOLVED WITH A MINIMUM AMOUNT OF DELAY.

4. ALL GAS, ELECTRIC, TELEPHONE LINES, CABLES, AND APPURTENANCES ENCOUNTERED DURING CONSTRUCTION THAT REQUIRE RELOCATION SHALL BE RELOCATED BY THE RESPECTIVE UTILITY. CONTRACTOR SHALL BE RESPONSIBLE FOR COORDINATION OF ALL NECESSARY UTILITY ADJUSTMENTS.

5. IT WILL BE THE CONTRACTOR'S RESPONSIBILITY TO PROTECT AND MAINTAIN IN SERVICE ALL EXISTING UTILITIES.

6. ALL WORK ON THIS PROJECT SHALL BE PERFORMED IN ACCORDANCE WITH APPLICABLE FEDERAL, STATE, AND LOCAL LAWS, RULES, AND REGULATIONS CONCERNING CONSTRUCTION SAFETY AND HEALTH. THESE DRAWINGS DO NOT INCLUDE NECESSARY COMPONENTS FOR CONSTRUCTION SAFETY WHICH SHALL REMAIN THE CONTRACTOR'S RESPONSIBILITY.

7. ALL EXCAVATION/CONSTRUCTION PERMITS WILL BE REQUIRED BEFORE BEGINNING ANY WORK WITHIN THE CITY RIGHT-OF-WAY. AN APPROVED COPY OF THESE PLANS MUST BE SUBMITTED AT THE TIME OF APPLICATION FOR PERMITS.

8. THE CONTRACTOR SHALL EXERCISE REASONABLE CARE DURING CONSTRUCTION TO PREVENT THE MOVEMENT OF SEDIMENT FROM THE SITE INTO EXISTING STREETS. LOOSE SOIL STOCKPILES DURING CONSTRUCTION ACTIVITIES SHALL BE PROMPTLY CLEANED UP OR PROTECTED FROM BEING CARRIED DOWNSTREAM BY FLOWING WATER.
9. DISPOSAL OF ALL WASTE MATERIAL SHALL BE THE RESPONSIBILITY OF THE CONTRACTOR AS SPECIFIED IN SECTION 6.14 OF THE GENERAL CONDITIONS IN THE CITY OF ALBUQUERQUE STANDARD SPECIFICATIONS FOR PUBLIC WORKS CONSTRUCTION - 1986 EDITION.

10. A DISPOSAL SITE FOR ALL EXCESS EXCAVATION MATERIAL, ASPHALTIC PAVING, CONCRETE CURBS AND SIDEWALKS, ETC., SHALL BE OBTAINED BY THE CONTRACTOR IN COMPLIANCE WITH APPLICABLE ENVIRONMENTAL REGULATIONS AND APPROVED BY THE FIELD ENGINEER. ALL COSTS INCURRED IN OBTAINING A DISPOSAL SITE AND HAUL THERE TO SHALL BE CONSIDERED INCIDENTAL TO THE PROJECT AND NO SEPARATE MEASUREMENT OR PAYMENT SHALL BE MADE.

11. THE CONTRACTOR WILL BE REQUIRED TO CONFINE HIS WORK WITHIN THE CONSTRUCTION LIMITS AND/OR PUBLIC RIGHT-OF-WAY TO PRESERVE EXISTING VEGETATION AND PRIVATE PROPERTY. THE CONTRACTOR SHALL NOT STORE ANY EQUIPMENT OR MATERIAL WITHIN THE RIGHT-OF-WAY UNLESS THE EQUIPMENT OR MATERIAL IS PROPERLY SHIELDED UTILIZING CURRENT SAFETY DESIGN AND INSTALLATION METHODS. THE SAFETY DESIGN FOR THIS SHIELDING SHALL BE PROVIDED BY THE CONTRACTOR AND MUST BE APPROVED BY THE ENGINEER BEFORE IMPLEMENTING. THERE WILL BE NO DIRECT MEASUREMENT OR PAYMENT FOR THE DESIGN, MATERIALS, INSTALLATION, AND REMOVAL OF THE SAFETY BARRIER.

12. CONTRACTOR SHALL MAINTAIN ACCESS TO ADJACENT PROPERTIES DURING CONSTRUCTION. REFER TO SECTION 19 OF THE GENERAL CONDITIONS.

13. CONTRACTOR SHALL COORDINATE WITH NEW MEXICO UTILITIES, INC., A MINIMUM OF THREE (3) WORKING DAYS PRIOR TO IMPLEMENTING THE PROPOSED WATER VALVE SHUT-OFF AND PRIOR TO INITIATING ANY WORK AFFECTING ANY EXISTING PUBLIC UTILITY.

14. WHEN ABUTTING NEW PAVEMENT TO EXISTING, SAWCUT EXISTING PAVEMENT TO A STRAIGHT EDGE AND AT A RIGHT ANGLE, OR AS APPROVED BY THE PROJECT ENGINEER, TO REMOVE ANY BROKEN OR CRACKED PAVEMENT. ALL SAWCUT PAVEMENT SHALL BE SPRAYED WITH TACK COAT PRIOR TO INSTALLATION OF ADJOINING ASPHALT PAVEMENT.

15. A MINIMUM OF THREE (3) WORKING DAYS PRIOR TO COMMENCING CONSTRUCTION, THE CONTRACTOR SHALL SUBMIT A DETAILED CONSTRUCTION SCHEDULE AND A CONSTRUCTION SIGNING AND BARRICADE PLAN TO CONSTRUCTION COORDINATION. TWO (2) WORKING DAYS PRIOR TO COMMENCING CONSTRUCTION, THE CONTRACTOR SHALL OBTAIN A BARRICADE PERMIT FROM THE TRAFFIC ENGINEERING DIVISION. CONTRACTOR SHALL NOTIFY CONSTRUCTION COORD. (768-2551) PRIOR TO OCCUPYING AN INTERSECTION. REFER TO SECTION 19 OF THE GENERAL CONDITIONS.

16. THE CONTRACTOR SHALL PLACE THE PERMANENT PAVEMENT MARKINGS AS SHOWN ON THE DRAWING.
17. THIS DOCUMENT, AND THE IDEAS AND DESIGNS INCORPORATED HEREIN, ARE INTENDED FOR USE ON THIS PROJECT AND IS NOT TO BE USED, IN WHOLE OR IN PART, FOR ANY OTHER PROJECT WITHOUT THE WRITTEN AUTHORIZATION OF EASTERLING & ASSOCIATES, INC. IN THE EVENT OF UNAUTHORIZED USE, THE USER ASSUMES ALL RESPONSIBILITY AND LIABILITY WHICH RESULTS.

18. CONTRACTOR SHALL NOTIFY THE ENGINEER NOT LESS THAN SEVEN (7) DAYS PRIOR TO STARTING WORK IN ORDER THAT THE ENGINEER MAY TAKE NECESSARY MEASURES TO ENSURE THE PRESERVATION OF SURVEY MONUMENTS. CONTRACTOR SHALL NOT DISTURB PERMANENT SURVEY MONUMENTS WITHOUT THE CONSENT OF THE ENGINEER AND SHALL NOTIFY THE ENGINEER AND BEAR THE EXPENSE OF REPLACING ANY THAT MAY BE DISTURBED WITHOUT PERMISSION. REPLACEMENT SHALL BE DONE ONLY BY THE ENGINEER. WHEN A CHANGE IS MADE IN THE FINISHED ELEVATION OF THE PAVEMENT OR ANY ROADWAY IN WHICH A PERMANENT SURVEY MONUMENT IS LOCATED, CONTRACTOR SHALL, AT HIS OWN EXPENSE, ADJUST THE MONUMENT COVER TO THE NEW GRADE UNLESS OTHERWISE SPECIFIED. REFER TO SECTION 4.4.1 OF THE GENERAL CONDITIONS.

19. ANY EXCAVATION WORK IN THE AREA OF ALL HIGH PRESSURE GAS LINES SHALL REQUIRE THE PRESENCE OF A GAS COMPANY OF NEW MEXICO REPRESENTATIVE. IT IS THE CONTRACTOR'S RESPONSIBILITY TO CONTACT THE GAS COMPANY OF NEW MEXICO REPRESENTATIVE, ERMINIO GURULE, AT 345-1877, EMERGENCY NUMBER 345-6058.

20. MANHOLE STEPS WILL BE INSTALLED IN ALL STORM DRAIN MANHOLES AND JUNCTION BOXES AND CATCH BASINS. THIS WORK SHALL BE CONSIDERED INCIDENTAL TO OTHER CONTRACT ITEMS AND NO SEPARATE MEASUREMENT OR PAYMENT SHALL BE MADE.

21. ALL CONFLICTING EXISTING STRIPING SHALL BE REMOVED BY EITHER GRINDING OR WITH APPROVED CHEMICAL PROCEDURES.

22. ALL UTILITIES AND UTILITY SERVICE LINES SHALL BE INSTALLED PRIOR TO PAVING.

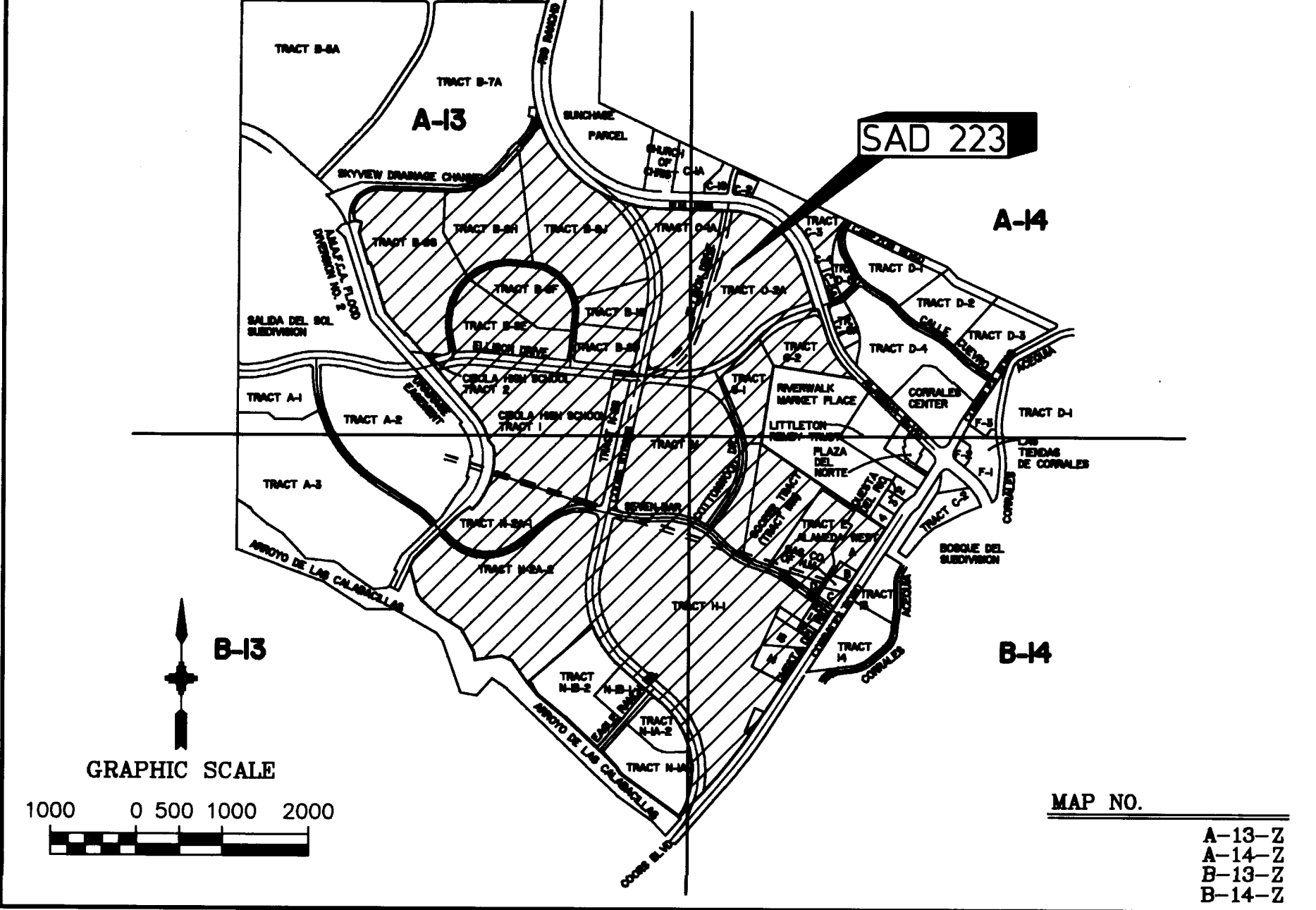
23. BACKFILL COMPACTION AND PAVING SHALL BE ACCORDING TO C.O.A. STD. DWG. 2465.
1. TACK COAT REQUIREMENTS SHALL BE DETERMINED BY THE FIELD ENGINEER.

1. SIDEWALKS AND WHEELCHAIR RAMPS WITHIN THE CURB RETURNS SHALL BE CONSTRUCTED WHEREVER A NEW CURB RETURN IS CONSTRUCTED.

1. IF CURB IS DEEPENED FOR A HANDICAP RAMP, THE RAMP SHALL BE CONSTRUCTED PRIOR TO ACCEPTANCE OF THE CURB AND GUTTER.

1. ALL STORM DRAINAGE FACILITIES SHALL BE COMPLETED PRIOR TO FINAL ACCEPTANCE.

VICINITY MAP

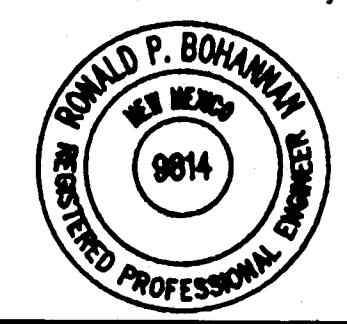


SHEET INDEX

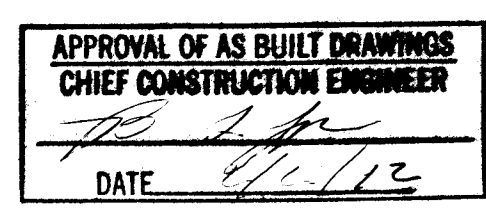
SHEET	TITLE
1 OF 11	COVER
2 OF 11	PROJECT INFORMATION
3 OF 11	SAD 223 OF 11 MASTER PLAN
4 OF 11	PLAN & PROFILE STA. 98+00 TO STA. 56+00
5 OF 11	PLAN & PROFILE STA. 5 OF 116+00 TO STA. 68+00
6 OF 11	PLAN & PROFILE STA. 6 OF 118+00 TO STA. 80+05
7 OF 11	SPECIAL TRAFFIC CONTROL DETAILS
8 OF 11	SPECIAL TRAFFIC CONTROL DETAILS
9 OF 11	TRAFFIC SIGNAL RELOCATION PLAN
10 OF 11	TYPICAL TRAFFIC CONTROL STRATEGIES
11 OF 11	EROSION CONTROL PLAN



I, Ronald P. Bohannon, hereby certify that these record drawings have been revised in accordance with the information provided by MCC, Inc., Easterling & Associates, Inc. and Bohannon-Huston, Inc., to approximately reflect the construction actually accomplished.



Ronald P. Bohannon 2/5/92
Ronald P. Bohannon
N.M.P.E. No. 9814



REV.	SHEETS	CITY ENGINEER	DATE	USER DEPARTMENT	DATE	USER DEPARTMENT	DATE

APPROVAL OF REVISIONS

ABBREVIATIONS

- AC - ASBESTOS CEMENT

B - BASELINE

BCT - BEGIN CROWN TRANSITION

C - CONSTRUCT

CAV - COMBINATION AIR VALVE

CCP - CONCRETE CYLINDER PIPE

CI - CAST IRON

CL - CENTERLINE

COA - CITY OF ALBUQUERQUE

DD - DEFLECT DOWN

DIP - DUCTILE IRON PIPE

DU - DEFLECT UP

E - EXISTING

ECT - END CROWN TRANSITION

ELEV - ELEVATION

F-F - FACE TO FACE

F/F - FEET/FOOT

FH - FIRE HYDRANT

FL - FLOW LINE

FO - FIBER OPTIC CABLE

G - GAS

HP - HIGH PRESSURE

I - INSTALL

LP - LIGHT POLE

NMUI - NEW MEXICO UTILITIES, INC.

PC - POINT OF CURVATURE

PCC - POINT OF COMPOUND CURVATURE

POC - POINT ON CURVE

PP - POWER POLE

PRC - POINT OF REVERSE CURVATURE

PRV - PRESSURE RELIEF VALVE

PT - POINT OF TANGENCY

PVC - POLY VINYL CHLORIDE

R - REMOVE

REL - RELOCATE

ROW - RIGHT-OF-WAY

SAS - SANITARY SEWER

SD - STORM DRAIN

TC - TOP OF CURB

TELE - TELEPHONE

TP - TOP OF PIPE

UE - UNDERGROUND ELECTRIC

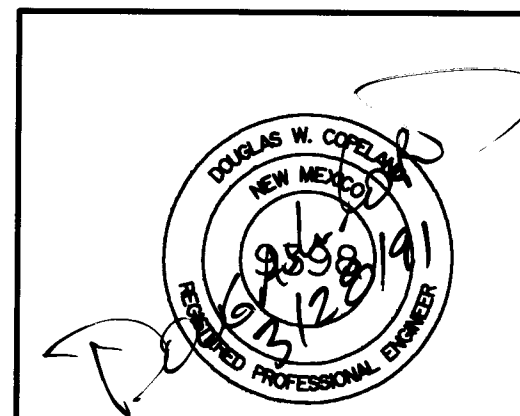
VCP - VITRIFIED CLAY PIPE

VER - VERIFY LOCATION

W OR WL - WATERLINE

X - CROSSING

SCANNED BY LASON



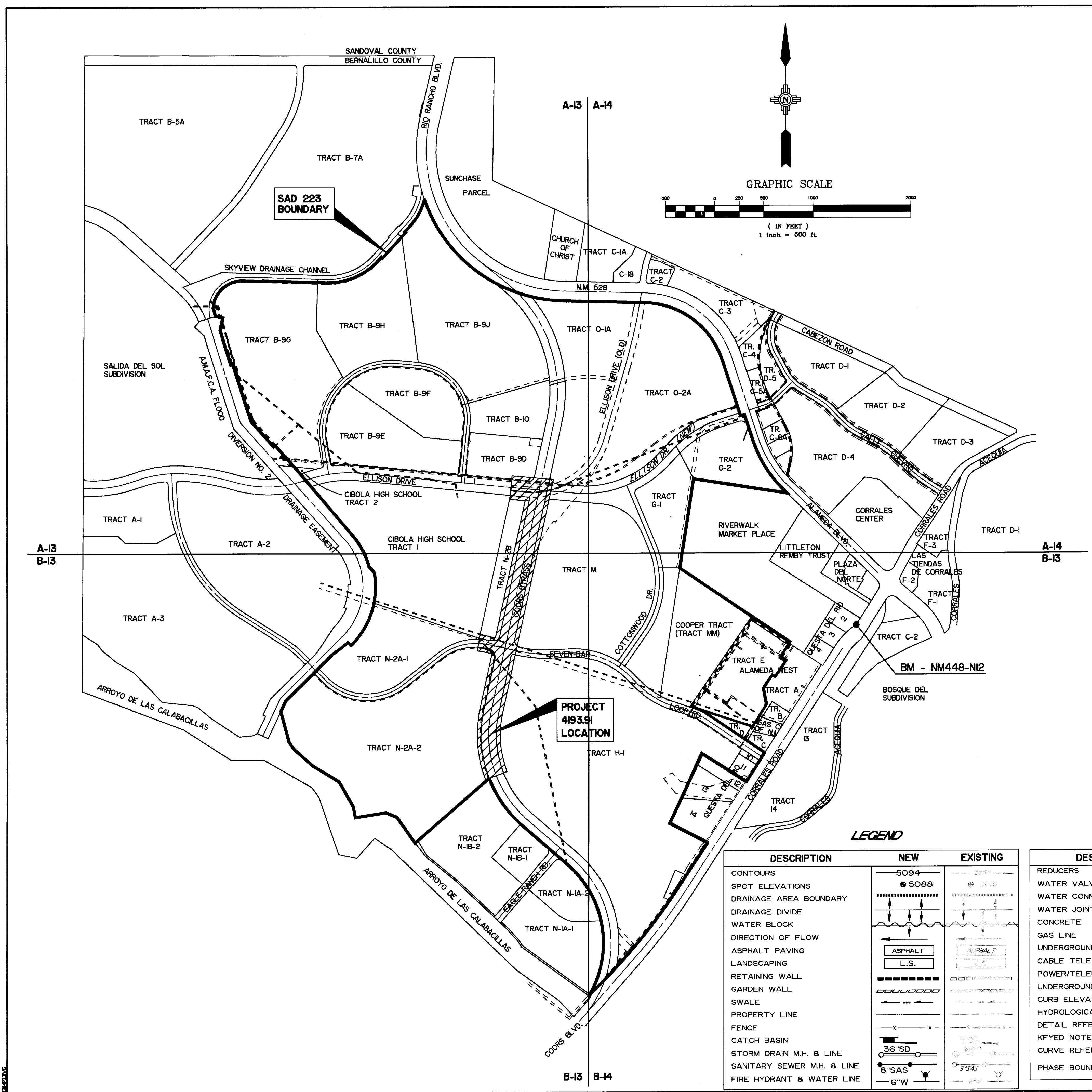
EASTERLING & ASSOCIATES, INC.
CONSULTING ENGINEERS
5643 PARADISE BLVD. N.W. ALBUQ., N.M. 87114
OFFICE (505) 898-8021 FAX (505) 898-8501

APPROVED FOR CONSTRUCTION

City Engineer signature and date stamp

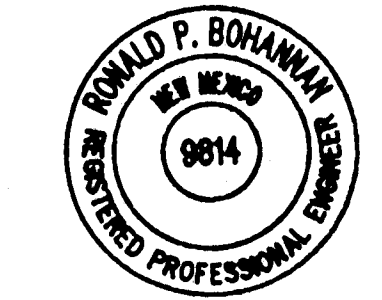
PROJECT NUMBER 4193.91

SHEET 1 OF 11



- NOTES:
- ALL MATERIALS AND APPLICATION SHALL BE SUBJECT TO APPROVAL BY NEW MEXICO UTILITIES, INC.
 - ALL MANHOLES WILL BE TYPE "E" UNLESS OTHERWISE NOTED.
 - ALL MANHOLES, REGARDLESS OF DEPTH, SHALL BE OF PRE-CAST CONCRETE AND MUST COMPLY WITH THE CITY OF ALBUQUERQUE SPECIFICATIONS ON PRE-CAST MANHOLES.
 - CONSTRUCT MANHOLES AS PER CITY OF ALBUQUERQUE STD. DWGS. 2102 AND 2110 (PRE-CAST).
 - CONSTRUCT DROP MANHOLES AS PER CITY OF ALBUQUERQUE STD. DWG. 2116 OR DWG. 2117 EXCEPT AS NOTED.
 - MANHOLES WILL BE EQUIPPED WITH STEPS, ~~REGARDLESS OF DEPTH~~ WHEN LESS THAN 20 FEET DEEP STEPS SHALL COMPLY WITH CITY OF ALBUQUERQUE SPECIFICATIONS FOR MANHOLE STEPS.
 - INSTALL E.M.D.'S AT ALL PLUGS AND MANHOLES PER CITY OF ALBUQUERQUE STD. DWG. 2145.
 - SURVEY BASE LINE IS INDICATED ON EACH PLAN AND PROFILE SHEET.
 - CONTRACTOR SHALL REMOVE AND REINSTALL EXISTING FENCE AS REQUIRED FOR CONSTRUCTION OF SAS LINE AND SHALL BE INCIDENTAL TO CONSTRUCTION.
 - NEW SANITARY SEWER LINES SHALL BE TESTED AND APPROVED PRIOR TO THE REMOVAL OF EXISTING SANITARY SEWER LINES.
 - CONTRACTOR SHALL MAINTAIN UNINTERRUPTED SERVICE OF EXISTING SANITARY SEWER LINES DURING CONSTRUCTION OF THIS PROJECT. BYPASS PUMPING OR OTHER ENGINEER APPROVED METHODS SHALL BE USED.
 - ALL BACKFILL SHALL BE COMPACTED TO 90% MODIFIED PROCTOR.
 - ~~DROP MANHOLES - MANHOLE STRUCTURE SHALL BE ROTATED TO ACCOMMODATE SINGLE DROP STRUCTURE ALONG UNBROKEN FACE OF MANHOLE. FOR MULTIPLE DROP STRUCTURES AT A MANHOLE, CONTRACTOR SHALL EITHER:~~
 - EXTEND 6 FT. DIAMETER PORTION OF THE MANHOLE TO THE TOP OF THE LONGEST DROP STRUCTURE OR
 - CONSTRUCT VERTICAL CURVILINEAR SEWER CONNECTION PER C.O.A. STD. DWG. 2117.

I, Ronald P. Bohannon, hereby certify that these record drawings have been revised in accordance with the information provided by MCC, Inc., Easterling & Associates, Inc. and Bohannon-Huston, Inc., to approximately reflect the construction actually accomplished.



Ronald P. Bohannon 2/5/92
Ronald P. Bohannon
N.M.P.E. No. 9814



LEGEND	
DESCRIPTION	NEW EXISTING
CONTOURS	5094 5088
SPOT ELEVATIONS	5094 5088
DRAINAGE AREA BOUNDARY	
DRAINAGE DIVIDE	
WATER BLOCK	
DIRECTION OF FLOW	
ASPHALT PAVING	ASPHALT
LANDSCAPING	L.S.
RETAINING WALL	
GARDEN WALL	
SWALE	
PROPERTY LINE	
FENCE	
CATCH BASIN	36" SD
STORM DRAIN M.H. & LINE	8" SAS
SANITARY SEWER M.H. & LINE	6" W
FIRE HYDRANT & WATER LINE	

LEGEND	
DESCRIPTION	NEW EXISTING
REDUCERS	18" BUTTERFLY
WATER VALVES	
WATER CONNECTIONS	
WATER JOINTS	
CONCRETE	
GAS LINE	
UNDERGROUND TELEPHONE	
CABLE TELEVISION	
POWER/TELEPHONE POLE	
UNDERGROUND ELECTRICAL	
CURB ELEVATION	
HYDROLOGICAL ANALYSIS PT.	
DETAIL REFERENCE	
KEYED NOTES	
CURVE REFERENCE	
PHASE BOUNDARY	

26 4 1193 9 110292

EASTERLING & ASSOCIATES, INC.
CONSULTING ENGINEERS
5643 PARADISE BLVD. N.W. ALBU, NM, 87114
OFFICE (505) 898-8021 FAX (505) 898-8501

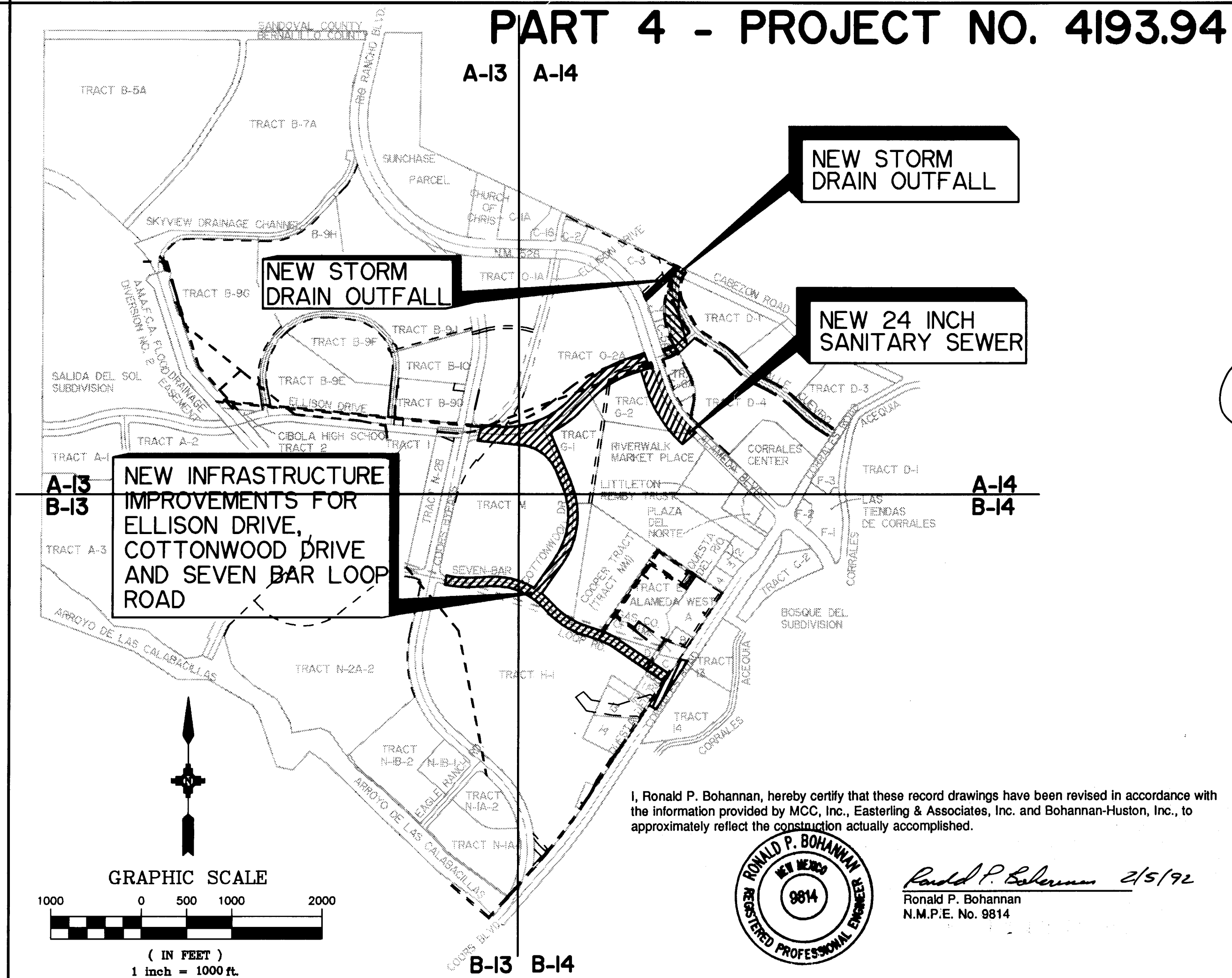
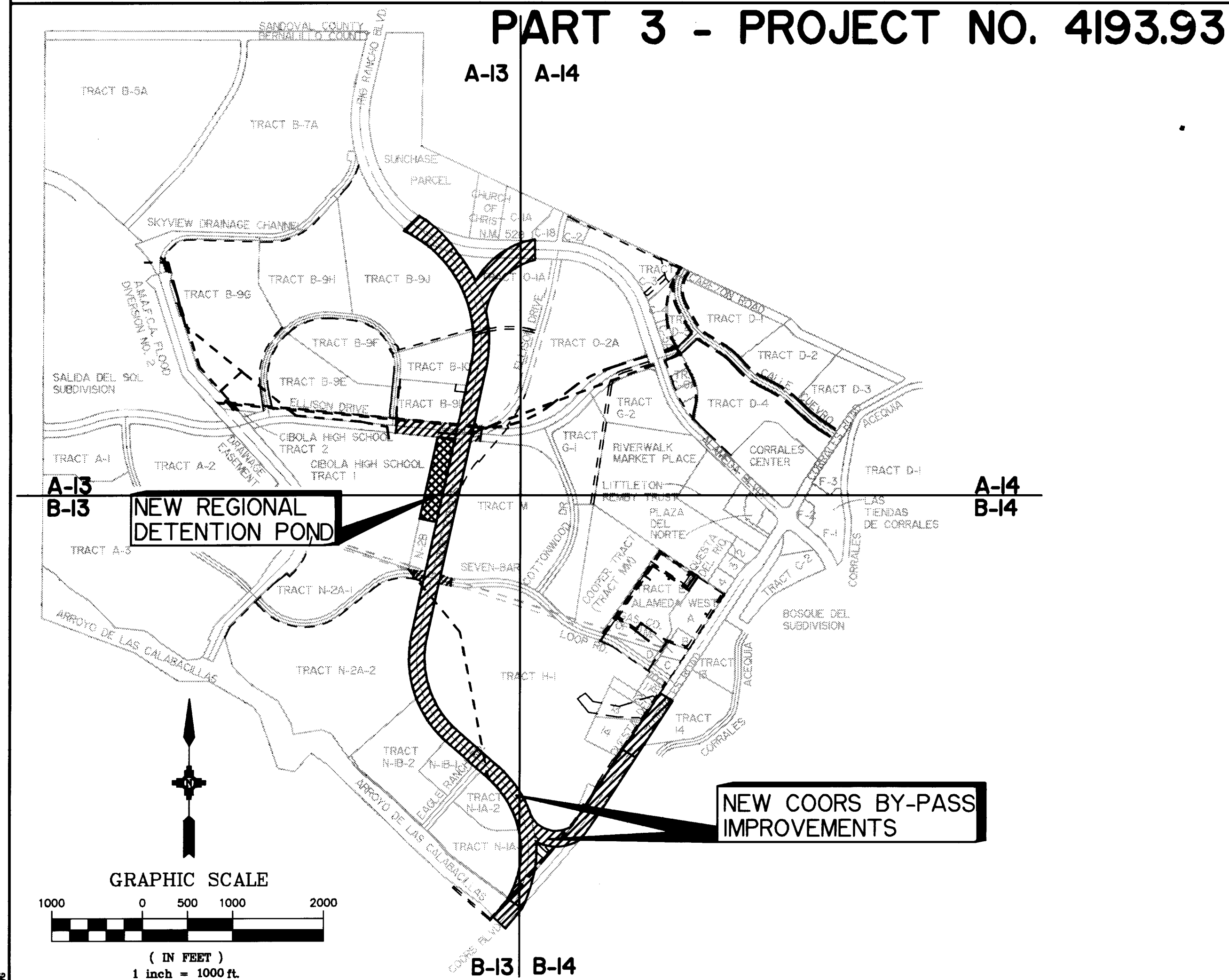
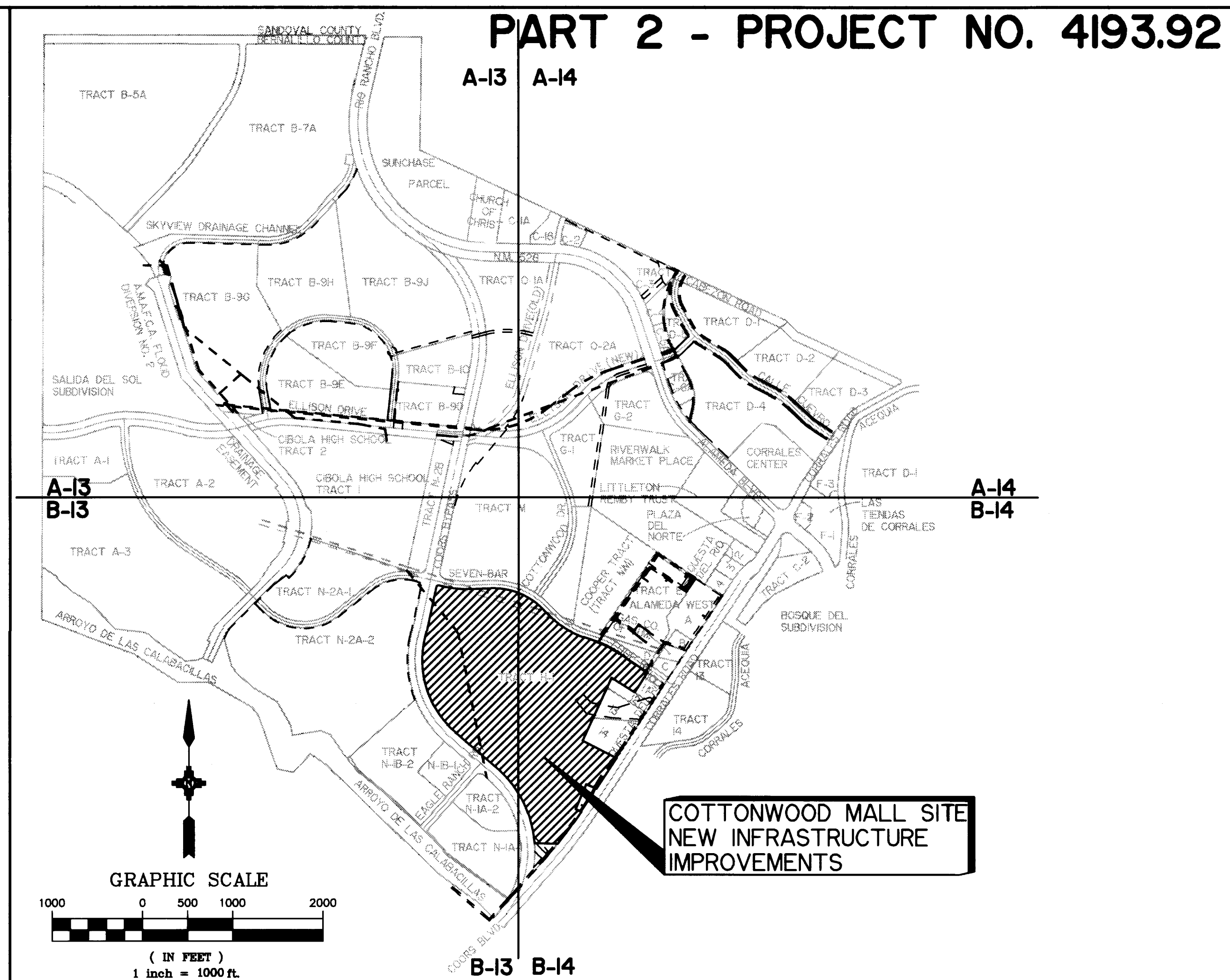
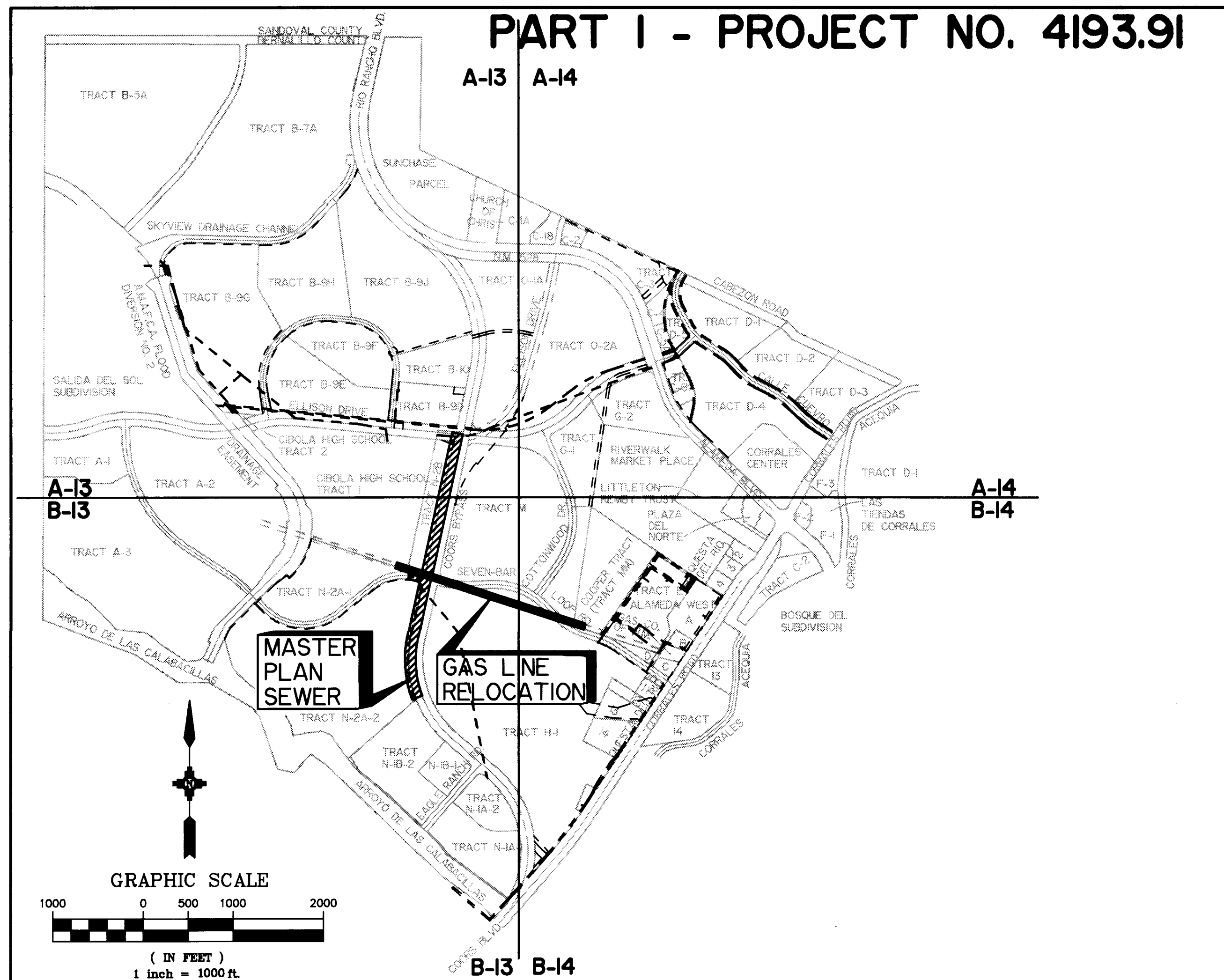
CITY OF ALBUQUERQUE
PUBLIC WORKS DEPARTMENT
ENGINEERING GROUP

TITLE: **SAD 223 - PART I
MASTER PLAN SANITARY SEWER LINE**

APPROVALS	ENGINEER	DATE	APPROVALS	ENGINEER	DATE
D.R.C. Chair	R. Bohannon	5-3-91	WATER	R. Bohannon	5-2-91
TRANS. DEV.	A. Bohannon	7-18-91	WASTE WATER	A. Bohannon	..
HYDROLOGY	N.A. Bohannon	1-18-91	NMUI	N.A. Bohannon	4-10-91

PROJECT NO. **4193.91** MAP NO. **A13/B13** SHEET **2** OF **11**

AS BUILT INFORMATION		BENCH MARKS		SURVEY INFORMATION		ENGINEERS SEAL	
CONTRACTOR	MCC	ELEV. - 5023.41	NM 448 - N2	NO.	DATE	BY	REMARKS
STATIONED BY	9/1/91	DATE OF	9/1/91	NO.	DATE	BY	REMARKS
APPROVED BY	9/1/91	DATE OF	9/1/91	NO.	DATE	BY	REMARKS
FIELD	9/1/91	DATE OF	9/1/91	NO.	DATE	BY	REMARKS
REVISION	9/1/91	DATE OF	9/1/91	NO.	DATE	BY	REMARKS
CORRECTED BY	9/1/91	DATE OF	9/1/91	NO.	DATE	BY	REMARKS
RECORDED BY	NO.	DATE	NO.	NO.	DATE	BY	REMARKS



**PLAT REFERENCES FOR SAD
223 PROJECT AREA**

TRACTS C1 THRU C6
C24-136, JULY 26, 1984

TRACTS C-1A AND C-1B
C25-172 DECEMBER 12, 1984

TRACTS N-1, N-2 AND H-1
C32-16, NOVEMBER 13, 1986

TRACTS D-1 THRU D-5
AND TRACTS C-5A AND C-6A
C29-31, DECEMBER 18, 1985

TRACTS N-13-1 AND N-13-2
C37-35, AUGUST 12, 1988

TRACTS N-2A AND N-2B
C33-198, JUNE 22, 1987

TRACTS N-1A-1 AND N-1A-2
C40-34, NOVEMBER 01, 1989

TRACTS B-9D THRU B-9K
C40-73, DECEMBER 21, 1989

TRACTS O-1A, O-2A, G-1, G-2, M AND
A PORTION OF ELLISON DR. EASEMENT
C40-77, DECEMBER 21, 1989

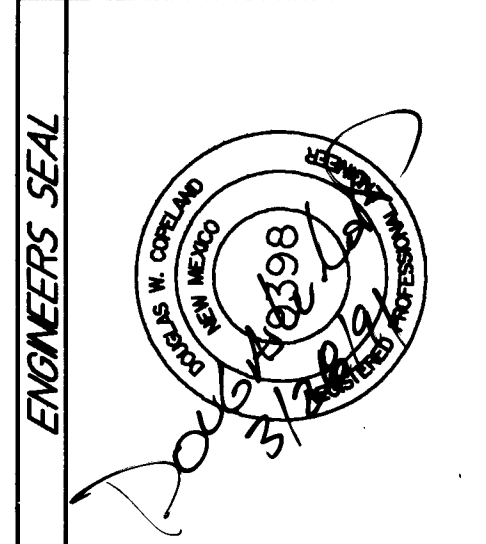
TRACTS N-2A-1 AND N-2A-2
C40-22, OCTOBER 17, 1989

TRACTS C-6A-1 THRU C-6A-4
C39-138, AUGUST 11, 1989

ALAMEDA WEST
C21-191, AUGUST 11, 1983

RIVERWALK MARKET PLACE
C40-45, NOVEMBER 17, 1989

AS BUILT INFORMATION		BENCH MARKS		SURVEY INFORMATION	
CONTRACTOR	DATE	ELEV. =	BY	NO.	DATE
INSPECTOR	DATE	TABLET SET IN CONC. 560' SOUTH OF	BY		
FIELD	DATE	CORRALES ROAD (NM 528) CENTERLINE AND 60' WEST OF	BY		
VERIFICATION	DATE	COORS BLVD. CENTERLINE	BY		
CORRECTED BY	DATE	N - 38108.54	BY		
RECORDED BY	DATE	E - 1528910.34	BY		
NO.			BY		



RECORD DRAWING

DEC. 1991

26 4193 910392

EASTERLING & ASSOCIATES, INC.
CONSULTING ENGINEERS
5643 PARADISE BLVD. N.W. ALBUQ., N.M., 87114
OFFICE (505) 898-8021 FAX (505) 898-8501

**CITY OF ALBUQUERQUE
PUBLIC WORKS DEPARTMENT
ENGINEERING GROUP**

APPROVALS			APPROVALS		
ENGINEER	DATE	WATER	ENGINEER	DATE	WASTE WATER
D.R.C. Chair	5-3-91			5-2-91	
TRANS. DEV.	4-18-91			4-18-91	
HYDROLOGY	4-18-91			4-18-91	

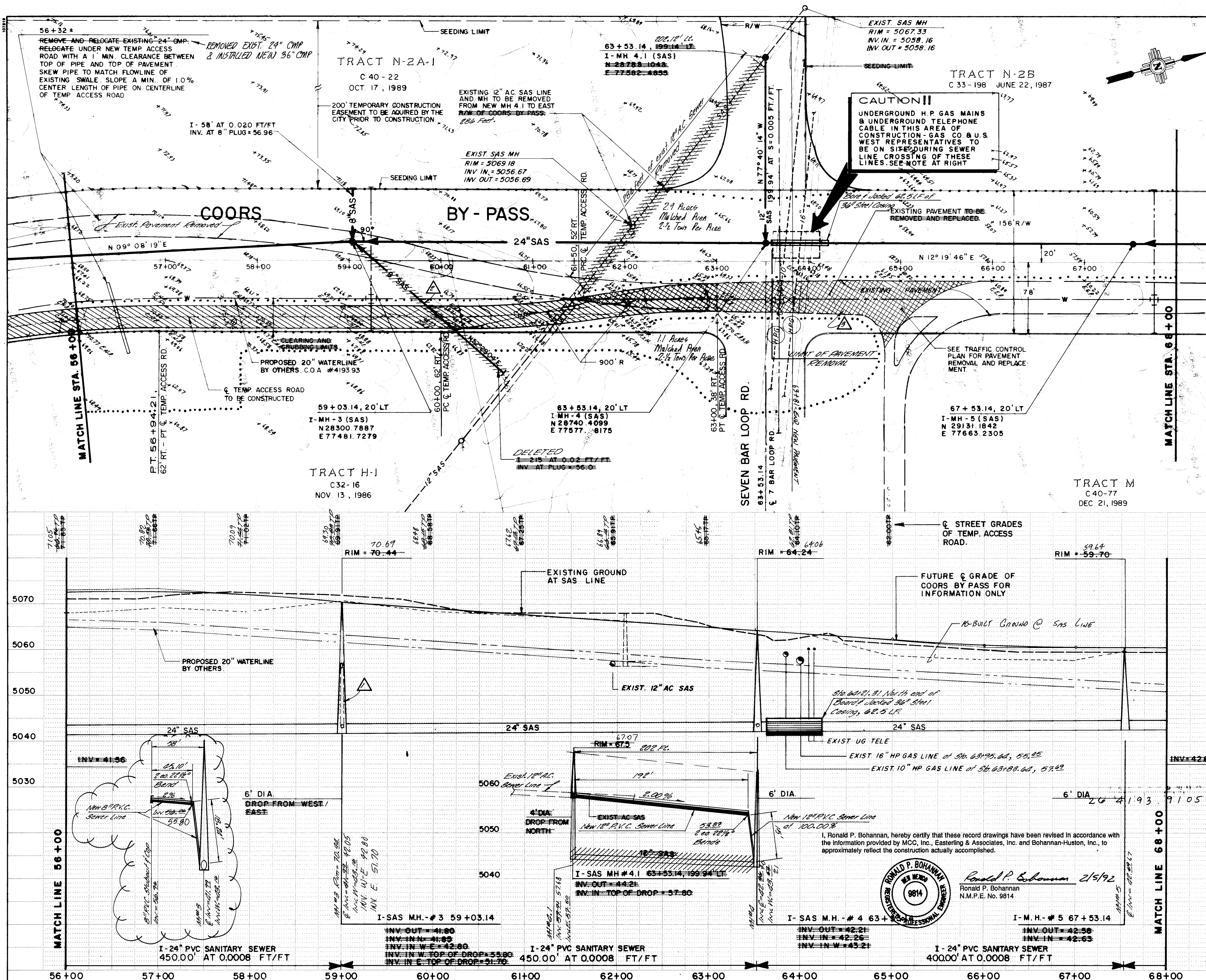
PROJECT NO. **4193.91** MAP NO. **A13/B13** SHEET **3** OF **11**

I, Ronald P. Bohannon, hereby certify that these record drawings have been revised in accordance with the information provided by MCC, Inc., Easterling & Associates, Inc. and Bohannon-Huston, Inc., to approximately reflect the construction actually accomplished.

RONALD P. BOHANNON
REGISTERED PROFESSIONAL ENGINEER
NEW MEXICO
9814

Ronald P. Bohannon 2/5/92
Ronald P. Bohannon
N.M.P.E. No. 9814

SCANNED BY
BY LASON



SURVEY BASE LINE ALONG C OF COORS BY PASS

WARNING:

GAS COMPANY OF NEW MEXICO - POLICY NOTE

EXISTING GAS COMPANY OF NEW MEXICO GAS TRANSMISSION 10" AND 16" PIPELINES AND RELATED FACILITIES SHALL IN ALL CASES AND IN ALL AREAS BE PRESERVED AND PROTECTED AND ALL EXISTING RIGHTS SHALL BE MAINTAINED. ANY AND ALL PRESENT OR FUTURE DESIGNS, CONSTRUCTION AND PLANNING INVOLVING DEVELOPMENT, ADDITIONS, IMPROVEMENTS, LANDSCAPING OR OTHER CHANGES OVER, ACROSS, OR ADJACENT TO THE PIPELINES SHALL BE SUBMITTED FOR FORMAL REVIEW, APPROVAL AND CONSTRUCTION INSPECTION TO:

GAS COMPANY OF NEW MEXICO
P.O. BOX 1899
BLOOMFIELD, NEW MEXICO 87413

CONTACTS ARE: MARK BROGGER,
PIPELINE OPERATIONS ENGINEER
BLOOMFIELD, NEW MEXICO
(505) 632-4278 OR
(505) 632-3311

MAINLINE MAINTENANCE CREW
ALBUQUERQUE, NEW MEXICO
(505) 345-1877

AT NO TIME SHALL EXPOSED AND UNSUPPORTED LENGTHS OF THESE PIPELINES EXCEED TWENTY-ONE FEET. EXPOSED LENGTHS BEYOND 21 FEET SHALL BE PROPERLY SUPPORTED AS APPROVED BY GAS COMPANY OF NEW MEXICO. NO DIGGING SHALL BE DONE NEAR THE PIPELINES WITHOUT GAS COMPANY OF NEW MEXICO'S FORMAL APPROVAL AND ON-SITE INSPECTION. THESE PIPELINES CAN POTENTIALLY BE VERY DANGEROUS AND SHOULD BE TREATED ACCORDINGLY.

NOTE:

THE REMOVAL AND DISPOSAL OF ASBESTOS-CEMENT PIPE SHALL BE DONE IN ACCORDANCE WITH THE FOLLOWING REGULATIONS:

REGULATION NO. 31 EMISSION STANDARDS FOR HAZARDOUS AIR POLLUTANTS BY ALBUQUERQUE/BERNALILLO COUNTY AIR QUALITY CONTROL BOARD. 6-11-1988 (ABC/AOCB: REGULATION NO. 31).

AIR QUALITY CONTROL REGULATION 761, EMISSION STANDARDS FOR HAZARDOUS AIR POLLUTANTS BY NEW MEXICO ENVIRONMENTAL IMPROVEMENT BOARD. 7-7-1988 (EIB/AQCR 751).

NEW MEXICO SOLID WASTE MANAGEMENT REGULATIONS BY SOLID WASTE MANAGEMENT SECTION OF THE ENVIRONMENTAL IMPROVEMENT DIVISION. 4-14-1989 (EIB/SWMR-2).

SECTION 1928.58 OF THE OCCUPATIONAL HEALTH AND SAFETY STANDARDS FOR CONSTRUCTION INDUSTRY BY STATE OF NEW MEXICO ENVIRONMENTAL IMPROVEMENT DIVISION, OCCUPATIONAL HEALTH AND SAFETY BUREAU. 6-1-1989 (29 CER PART 1926).

RECORD DRAWING
DEC. 1991

1" = 50' HORZ.
1" = 5' VERT.

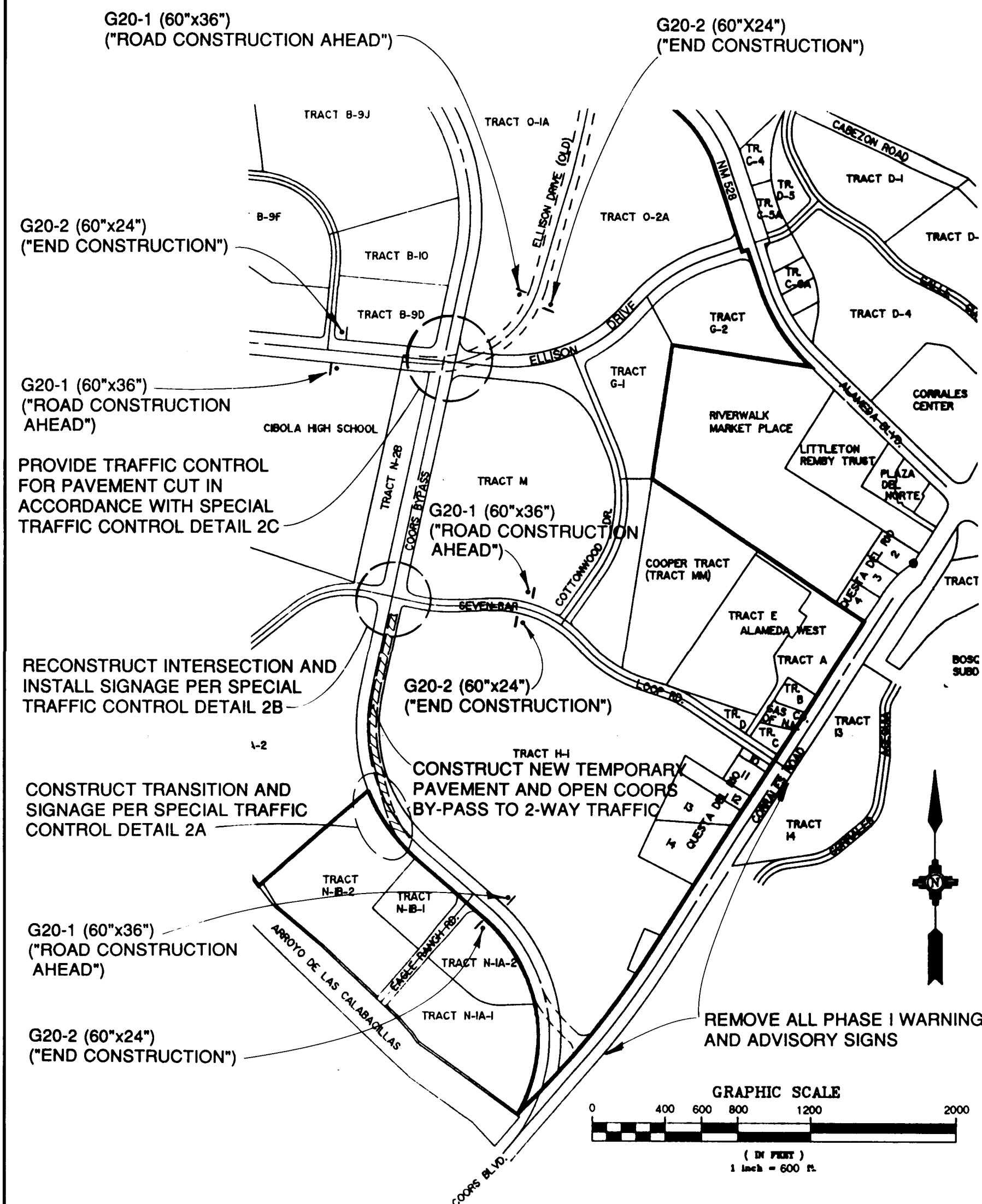
EASTERLING & ASSOCIATES, INC.
CONSULTING ENGINEERS
5643 Paradise Boulevard NW, Albuquerque, New Mexico 87114
Telephone (505) 898-8021
FAX (505) 898-8501

CITY OF ALBUQUERQUE
PUBLIC WORKS DEPARTMENT
ENGINEERING GROUP

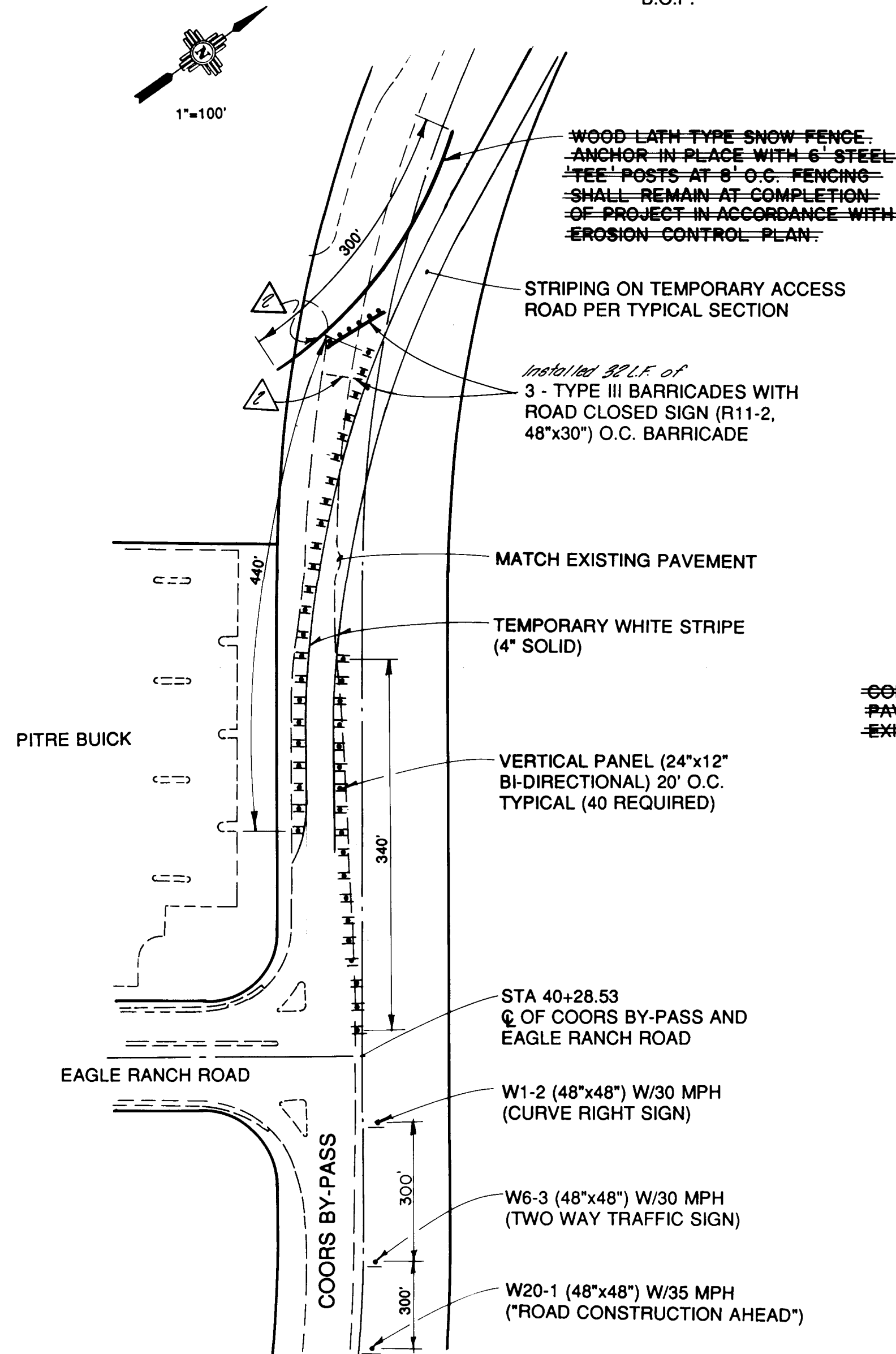
TITLE:
PLAN & PROFILE
STA. 56+00 TO 68+00
ALONG COORS BY-PASS

APPROVALS	ENGINEER	DATE	APPROVALS	ENGINEER	DATE
D.R.C. CHAIR	Ronald P. Bohannon	6-3-91	WATER	William S. S. S.	5-2-91
TRANS. DEV.	R. D. D.	4-18-91	WASTEWATER	W. S. S.	5-2-91
HYDROLOGY	W. S. S.	4-18-91	N.M.U.I.	W. S. S.	4-18-91

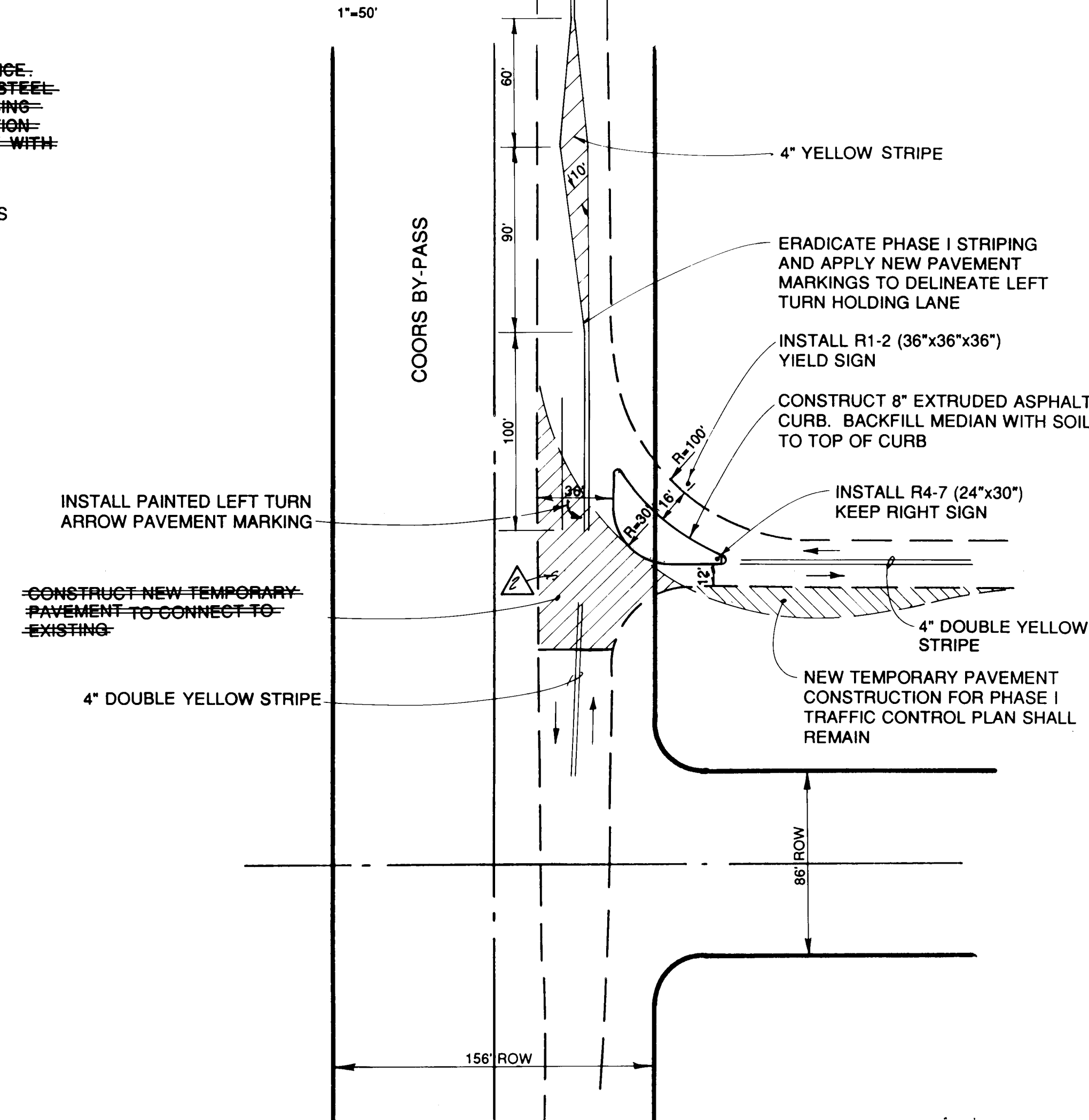
DRAWING NO. 4193.91 MAP NO. A13/B13 SHEET 5 OF 11



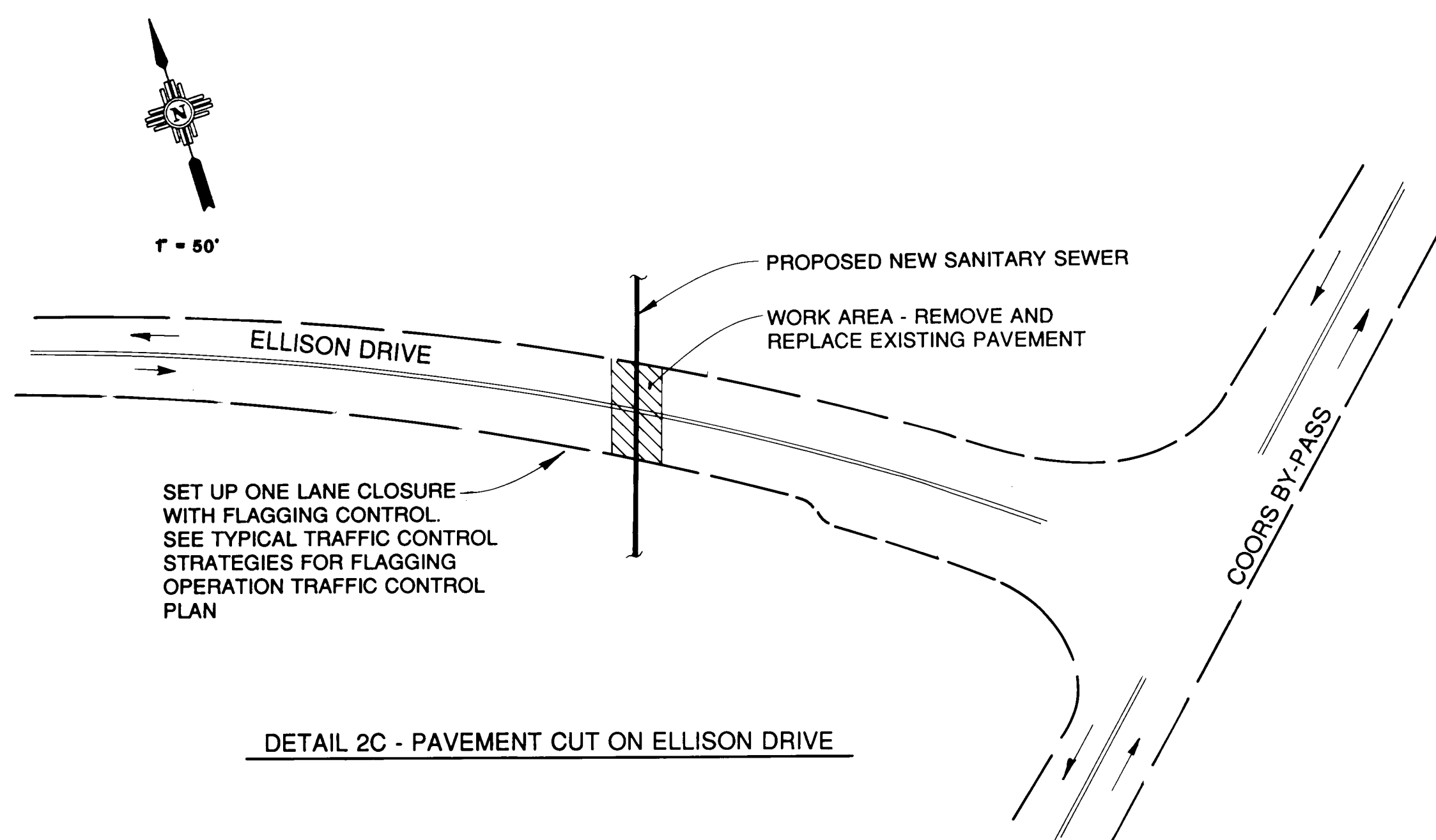
PHASE II - TRAFFIC CONTROL PLAN



DETAIL 2A - TEMPORARY PAVEMENT CONNECTION AT EAGLE RANCH ROAD



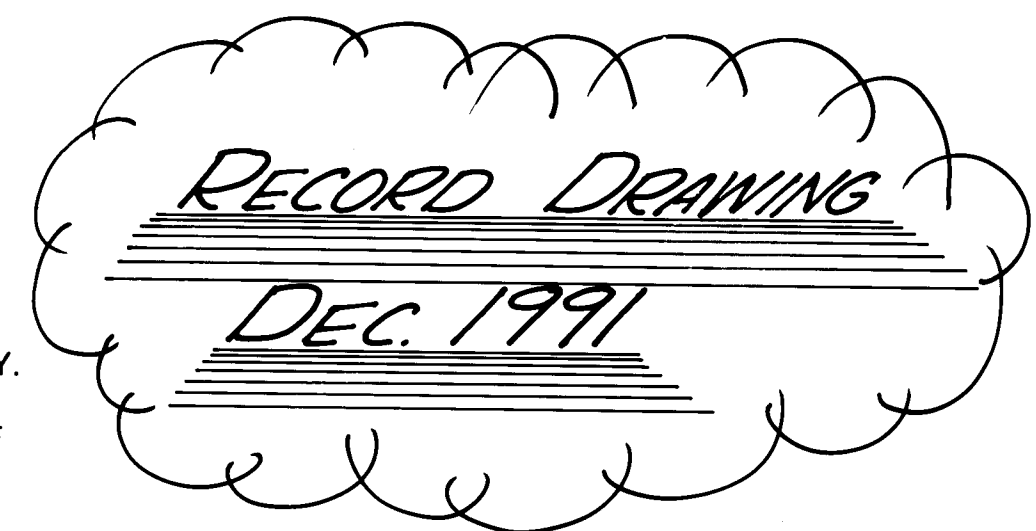
DETAIL 2B - TEMPORARY PAVEMENT RECONNECTION AT SEVEN BAR LOOP ROAD/COORS BY-PASS



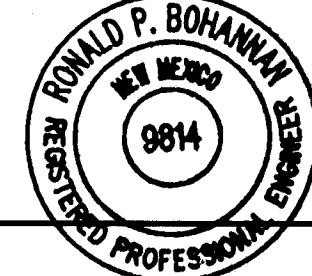
DETAIL 2C - PAVEMENT CUT ON ELLISON DRIVE

TRAFFIC CONTROL NOTES

- PHASE II
1. IMPLEMENT TRAFFIC CONTROL DURING CONSTRUCTION PHASE IN ACCORDANCE WITH TYPICAL TRAFFIC CONTROL STRATEGIES AND AS SHOWN HEREIN.
 2. IMPLEMENT PHASE II TRAFFIC CONTROL AFTER THE CONSTRUCTION OF THE DEEP SANITARY SEWER FROM STA. 50+80 TO 63+53 AND CONSTRUCTION NEW TEMPORARY PAVEMENT ARE COMPLETE.
 3. REFER TO TYPICAL TRAFFIC CONTROL STRATEGIES FOR INTERIM TRAFFIC CONTROL MEASURES TO BE USED DURING PHASE II IMPLEMENTATION.
 4. UTILIZE FLAGGING OPERATION TRAFFIC CONTROL STRATEGY WHEN WORK IS BEING PERFORMED ADJACENT TO EXISTING TRAVELED WAY.
 5. CONTRACTOR SHALL BACKFILL ALL OPEN TRENCHES AT THE END OF EACH WORK DAY IN AREAS WHERE TRAFFIC IS ALLOWED TO TRAVEL THROUGH THE CONSTRUCTION ZONE.
 6. CONTRACTOR SHALL ERADICATE AND RESTRIPE PAVEMENT MARKINGS AS MAY BE REQUIRED TO CLEARLY DELINEATE CENTERLINE AND PAVEMENT EDGES FOR ALL AREAS REQUIRING NEW PAVEMENT OR REROUTING OF EXISTING TRAFFIC LANES.
 7. ALL WARNING SIGNS SHALL BE 48"x48" MINIMUM SIZE.
 8. ALL SPECIAL ADVISORY SIGNS SHALL BE CONSTRUCTED WITH REFLECTORIZED LETTERS HAVING A MINIMUM LETTER HEIGHT OF 5".
 9. ALL TRAFFIC CONTROL SHALL BE REMOVED AT THE COMPLETION OF THIS PROJECT.



I, Ronald P. Bohannon, hereby certify that these record drawings have been revised in accordance with the information provided by MCC, Inc., Easterling & Associates, Inc. and Bohannon-Huston, Inc., to approximately reflect the construction actually accomplished.



Ronald P. Bohannon 2/5/92
Ronald P. Bohannon
N.M.P.E. No. 9814

26 4193.910892

EASTERLING & ASSOCIATES, INC.
CONSULTING ENGINEERS
5843 Paradise Boulevard NW, Albuquerque, New Mexico 87114
Telephone (505) 898-8021
FAX (505) 898-8501

CITY OF ALBUQUERQUE
PUBLIC WORKS DEPARTMENT
ENGINEERING GROUP

TITLE: SAD 223 - PART 1
SPECIAL TRAFFIC CONTROL DETAILS - PHASE II

APPROVALS	ENGINEER	DATE	APPROVALS	ENGINEER	DATE
D.R.C. Chair	Reg. Allen	5-3-91	WATER	400	5-2-91
TRANS. DEV.	R. Doughty	1-18-91	WASTE WATER	400	"
HYDROLOGY	W.A. 3/91	2-18-91	CONST. COORD.	Ronald P. Bohannon	4/14/91

PROJECT NO. 4193.91 MAP A13/ NO. B13 SHEET 8 OF 11

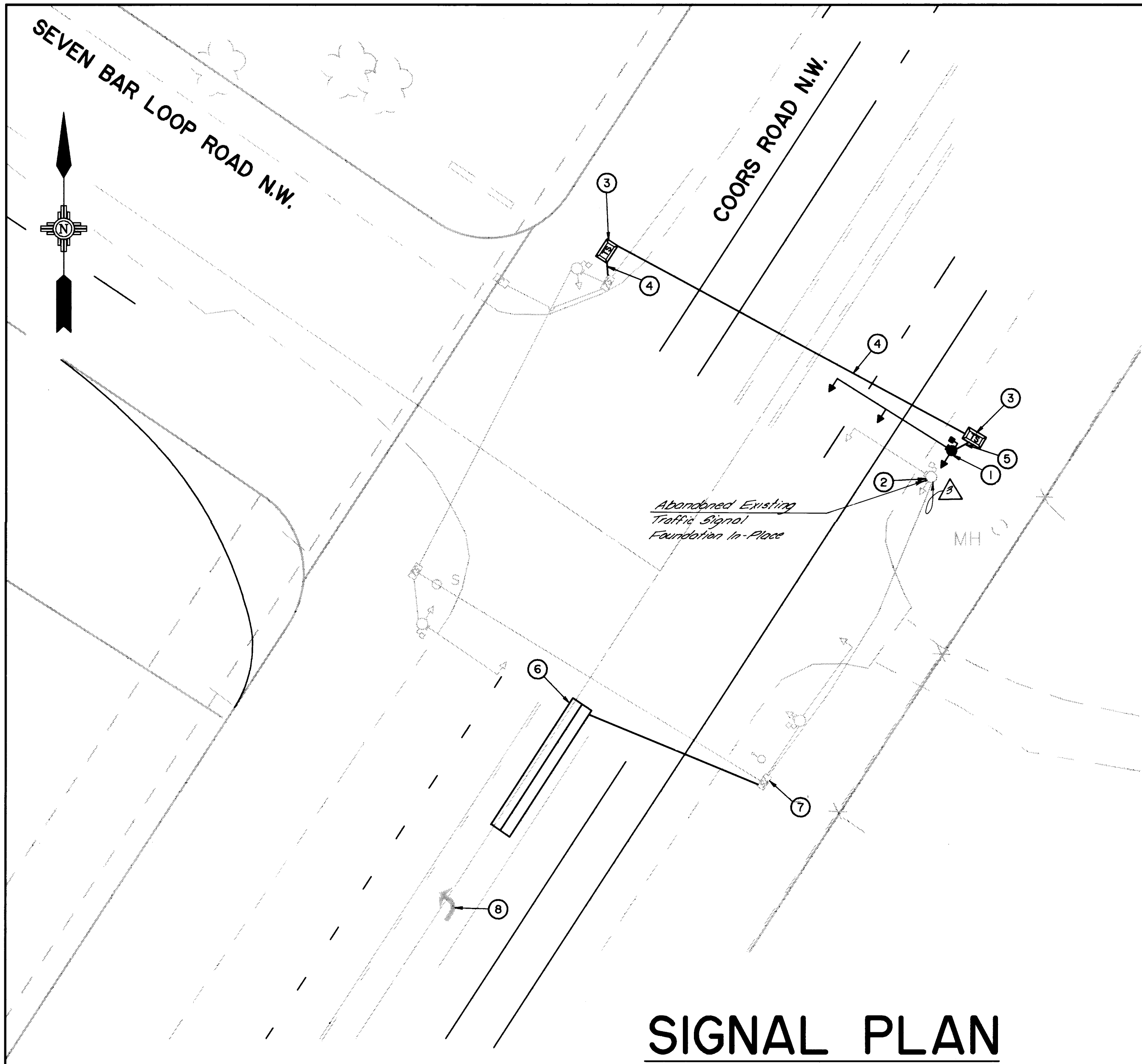
AS BUILT INFORMATION	
CONTRACTOR	MCC
WORK ORDER	BY BH1
DATE	5/2/91
INSPECTOR	BY BH1
DATE	5/2/91
APPROVED	BY BH1
DATE	5/2/91
DESIGNED	BY BH1
DATE	5/2/91
DRAWN	BY BH1
DATE	5/2/91
RECORDED	BY BH1
DATE	5/2/91

BENCH MARKS	
CONTRACTOR	MCC
WORK ORDER	BY BH1
DATE	5/2/91
INSPECTOR	BY BH1
DATE	5/2/91
APPROVED	BY BH1
DATE	5/2/91
DESIGNED	BY BH1
DATE	5/2/91
DRAWN	BY BH1
DATE	5/2/91
RECORDED	BY BH1
DATE	5/2/91

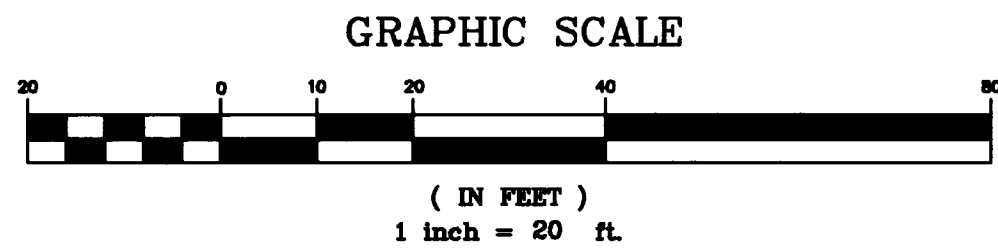
SURVEY INFORMATION	
FIELD NOTES	DATE
NO	BY



ENGINEERS SEAL	
DATE	DATE
BY	BY
REMARKS	REMARKS
DESIGN	DESIGN
DWC	DWC
DEC	DEC
DATE	DATE
3-91	3-91
DATE	DATE
3-91	3-91



SIGNAL PLAN



KEYED NOTES

1. CONSTRUCT TYPE I MAST ARM FOUNDATION. CONTRACTOR SHALL FURNISH NEW HARDWARE TO INCLUDE I-35' MAST ARM W/POLE, I-5 SECTION HEAD LUMINAIRE, AND I-BACK PLATE.
2. ~~REMOVE EXISTING CONCRETE FOUNDATION AFTER C.O.A. HAS REMOVED AND RELOCATED EXISTING SIGNAL HARDWARE.~~
3. INSTALL LARGE PULL BOX.
4. INSTALL 3" PVC CONDUIT. INSTALL CONDUCTORS PER CONDUIT FILL DEFINITION A.
5. INSTALL 3" PVC CONDUIT. INSTALL CONDUCTORS PER CONDUIT FILL DEFINITION B.
6. INSTALL NEW LOOP DETECTOR, (6'X40' QUADRAPOLE) INCLUDING SAWCUT, LOOP WIRE, LEAD-IN WIRE, AND SEALANT.
7. COIL 100 FEET OF LEAD-IN CABLE FOR FUTURE CONDUIT MODIFICATION.
8. INSTALL REFLECTORIZED PLASTIC PAVEMENT MARKING - "LEFT ARROW".

PROPOSED	EXISTING	ITEM
		PULL BOX, SMALL(PER C.O.A. STD. DWG. 2520)
		PULL BOX, LARGE(PER C.O.A. STD. DWG. 2521)
		PULL BOX(INTERCONNECT)
		PULL BOX(STREET LIGHT)
		CONTROLLER
		SPLICE CABINET
		TRAFFIC MANHOLE
		TRAFFIC SIGNAL PEDESTRIAN POLE
		POLE WITH MASTARM, TRAFFIC SIGNAL
		PEDESTRIAN PUSHBUTTON
		PEDESTRIAN SIGNAL
		STREET LIGHT FOUNDATION ONLY
		STREET LIGHT W/FOUNDATION
		CONDUIT RUN
		LOOP DETECTOR

CONSTRUCTION NOTES

1. TRAFFIC SIGNAL MATERIALS AND CONSTRUCTION SHALL CONFORM TO THE NMSHTD "STANDARD SPECIFICATIONS FOR ROAD AND BRIDGE CONSTRUCTION," EDITION OF 1984, SECTIONS 705, 706, 708, 709, 710, 711, 712, 713, AND 714.
2. TRAFFIC SIGNAL MODIFICATIONS SHALL BE COORDINATED WITH C.O.A. TRAFFIC ENGINEERING OPERATIONS (857-8000) AND NMSHTD TRAFFIC SIGNAL MAINTENANCE LAB IN SANTA FE (827-5578) AT LEAST 2 WORKING DAYS IN ADVANCE OF ANY WORK ACTIVITY.
3. THE CONTRACTOR SHALL PROVIDE OFF-DUTY POLICE CONTROL FOR ANY WORK ACTIVITY WHICH REQUIRES SIGNALS TO BE SHUT DOWN.
4. LARGE PULL BOXES SHALL HAVE A MINIMUM SIZE OF 17"x30" AND SHALL BE CONSTRUCTED IN ACCORDANCE WITH C.O.A. STD. DWG. 2521.
5. SMALL BOXES SHALL HAVE A MINIMUM SIZE OF 13"x24" AND SHALL BE CONSTRUCTED IN ACCORDANCE WITH C.O.A. STD. DWG. 2521.
6. TYPE I MAST ARM FOUNDATIONS SHALL BE CONSTRUCTED FOR 30' ARMS OR GREATER AND SHALL BE CONSTRUCTED IN ACCORDANCE WITH C.O.A. STD. DWG. 2526.
7. ELECTRICAL CONDUIT SHALL BE 3" PVC UNLESS SPECIFIED OTHERWISE. PULL STRINGS SHALL BE LEFT IN ALL CONDUITS INSTALLED BY THE CONTRACTOR. CONTRACTOR SHALL BORE AND JACK ELECTRICAL CONDUIT UNDER PAVED SURFACES UNLESS PAVEMENT IS OTHERWISE SCHEDULED FOR REMOVAL AND REPLACEMENT UNDER THE SCOPE OF THIS PROJECT.
8. THE CONTRACTOR SHALL FURNISH ALL REQUIRED SIGNAL HARDWARE AS INDICATED IN THE KEYED NOTES. NEW TRAFFIC SIGNAL HARDWARE SHALL BE DELIVERED TO THE TRAFFIC ENGINEERING OPERATIONS YARD ON PINO RD., NE, ALBUQUERQUE, NM, UNLESS NOTED OTHERWISE HEREIN. THE C.O.A. WILL REMOVE AND REINSTALL ABOVE-GROUND TRAFFIC SIGNAL HARDWARE AND CONTRACTOR FURNISHED HARDWARE AS REQUIRED TO COMPLETE THE SIGNAL IMPROVEMENTS SHOWN ON THIS SHEET. THE CONTRACTOR SHALL INSTALL NEW TRAFFIC SIGNAL FOUNDATIONS, CONDUIT, PULL BOXES, AND CONDUCTOR CABLE WHERE SHOWN ON THE SIGNAL PLAN.
9. THE C.O.A. WILL MAKE ALL CABLE SPLICES AND ENERGIZE TRAFFIC SIGNAL ONCE IMPROVEMENTS ARE COMPLETE.

I, Ronald P. Bohannon, hereby certify that these record drawings have been revised in accordance with the information provided by MCC, Inc., Easterling & Associates, Inc. and Bohannon-Huston, Inc., to approximately reflect the construction actually accomplished.



Ronald P. Bohannon
N.M.P.E. No. 9814



CONDUIT FILL DEFINITIONS

- FILL DEFINITION "A"**
- TWO 20-CONDUCTOR #14 MCC CABLES
 - ONE 5-CONDUCTOR #14 MCC CABLE
 - ONE SINGLE CONDUCTOR #10 THW (WHITE) CABLE
 - ONE #8 BARE COPPER GROUND WIRE
 - LOOP LEAD-IN WIRES AS REQUIRED

- FILL DEFINITION "B"**
- ONE 20-CONDUCTOR #14 MCC CABLE
 - ONE 5-CONDUCTOR #14 MCC CABLE

EASTERLING & ASSOCIATES, INC.
CONSULTING ENGINEERS

5643 PARADISE BLVD. N.W. ALBU., N.M., 87114
OFFICE (505) 898-8021 FAX (505) 898-8501

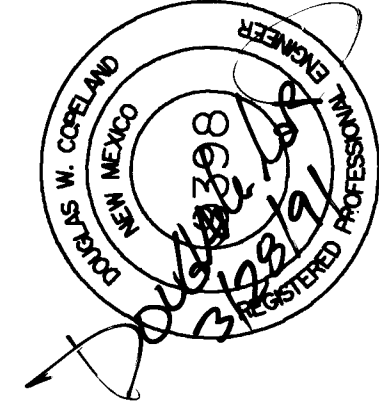
CITY OF ALBUQUERQUE
PUBLIC WORKS DEPARTMENT
ENGINEERING GROUP

TITLE: **SAD 223 - PART I**
SEVEN BAR LOOP ROAD / CORRALES ROAD
TRAFFIC SIGNAL RELOCATION PLAN

APPROVALS	ENGINEER	DATE	APPROVALS	ENGINEER	DATE
D.R.C. Chair	<i>R. Bohannon</i>	5-3-91	WATER	<i>R. Bohannon</i>	5-2-91
TRANS. DEV.	<i>R. Bohannon</i>	4-18-91	WASTE WATER	<i>All</i>	..
HYDROLOGY	<i>N.A. 3/14</i>	4-18-91			
TRAFFIC OPER.	<i>2.7.1.4 4-18-91</i>				

PROJECT NO. **4193.91** MAP NO. **B-14** SHEET **9** OF **11**

AS BUILT INFORMATION		BENCH MARKS		SURVEY INFORMATION		ENGINEERS SEAL		REVISIONS		DESIGN		DATE		DATE	
CONTRACTOR	DATE	NO.	BY	NO.	BY	NO.	BY	NO.	DATE	NO.	DATE	NO.	DATE	NO.	DATE
INSPECTED BY	DATE														
VERIFY BY	DATE														
RECORDED BY	DATE														
NO.															



26 4193.91 101992

QUERQUE
 DEPARTMENT
 GROUP
 PART 1
 ROL PLAN
 ROVALS
 R
 E WATER
 HEALTH
 13/13
 SHEET 11 OF 11