

# FINAL DESIGN PLANS FOR VILLAGE OF LOS RANCHOS de ALBUQUERQUE FIRE HYDRANT INSTALLATION

## INDEX TO SHEETS

SHEET 1 - COVER SHEET

~~SHEET 2 - FIRE HYDRANT NO. 1~~

SHEET 3 - FIRE HYDRANTS NO. 2, 3, 6 & 4

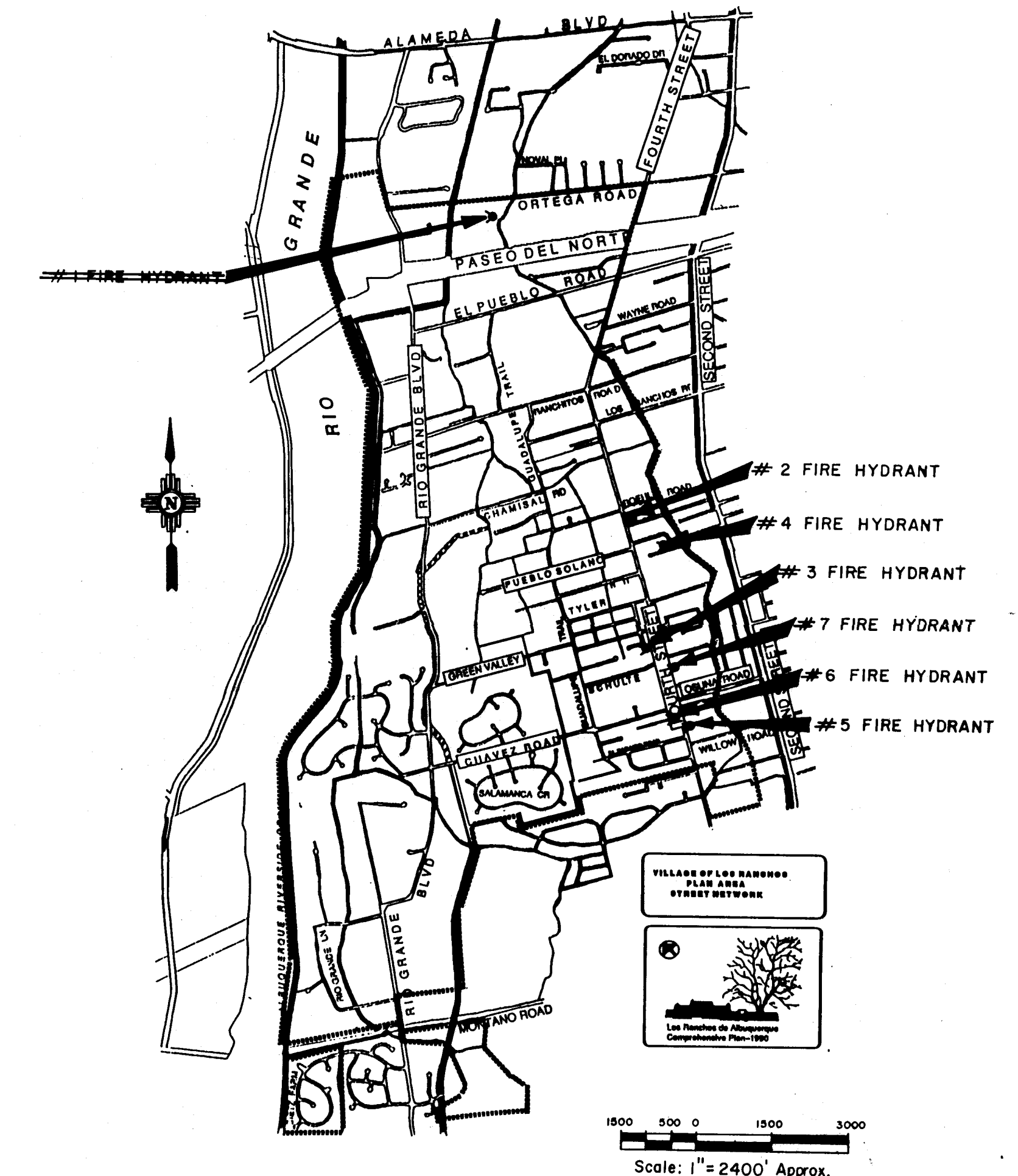
SHEET 4 - FIRE HYDRANTS NO. 5, 6, & 7

SCANNED BY  
BY LASON

APPROVAL OF AS BUILT DRAWINGS  
CITY ENGINEER: *Kenneth B. Yule*  
DATE: 4-8-97

VICINITY MAP

MAP NO. D-15 & E-15  
MRGCD MAPS 27 & 29



### PROJECT LOCATION REFERENCE

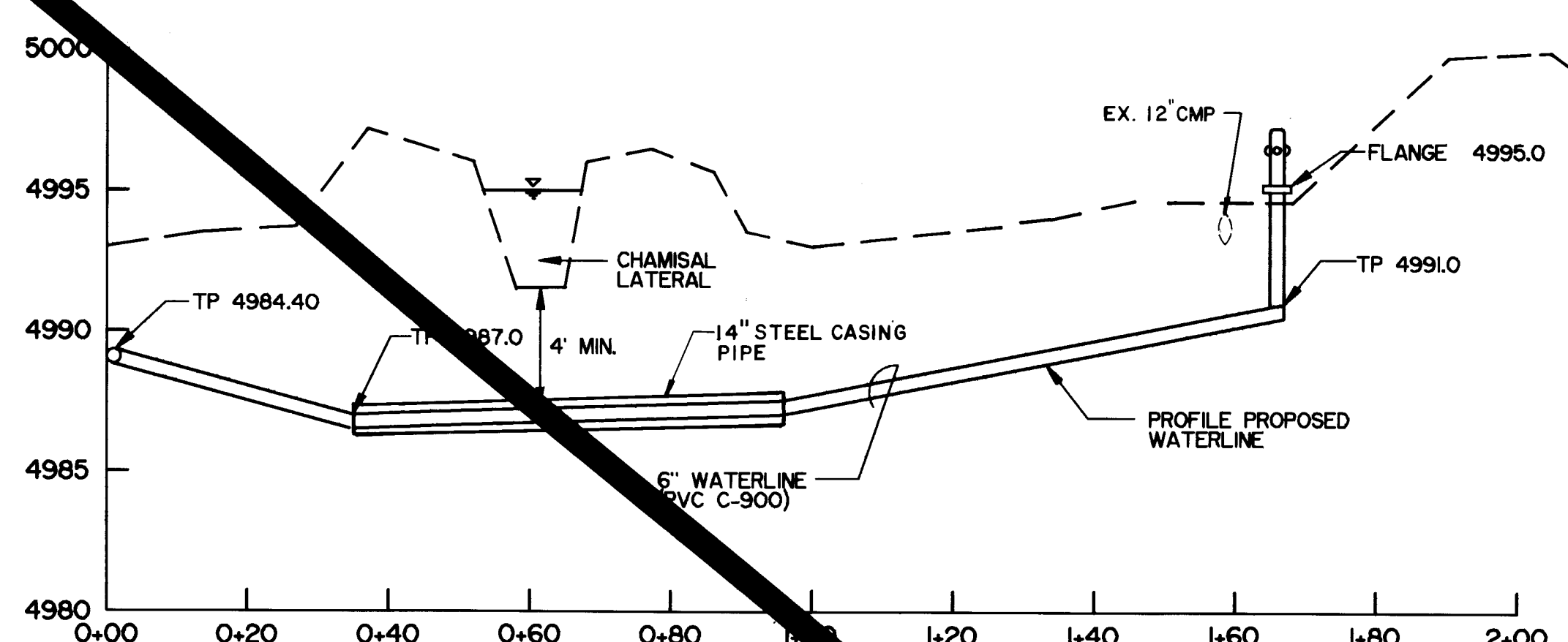
- ~~① FIRE HYDRANT NO. 1~~
- ② FIRE HYDRANT NO. 2
- ③ FIRE HYDRANT NO. 3
- ④ FIRE HYDRANT NO. 4
- ⑤ FIRE HYDRANT NO. 5
- ⑥ FIRE HYDRANT NO. 6
- ⑦ FIRE HYDRANT NO. 7

26-43231,90 0177

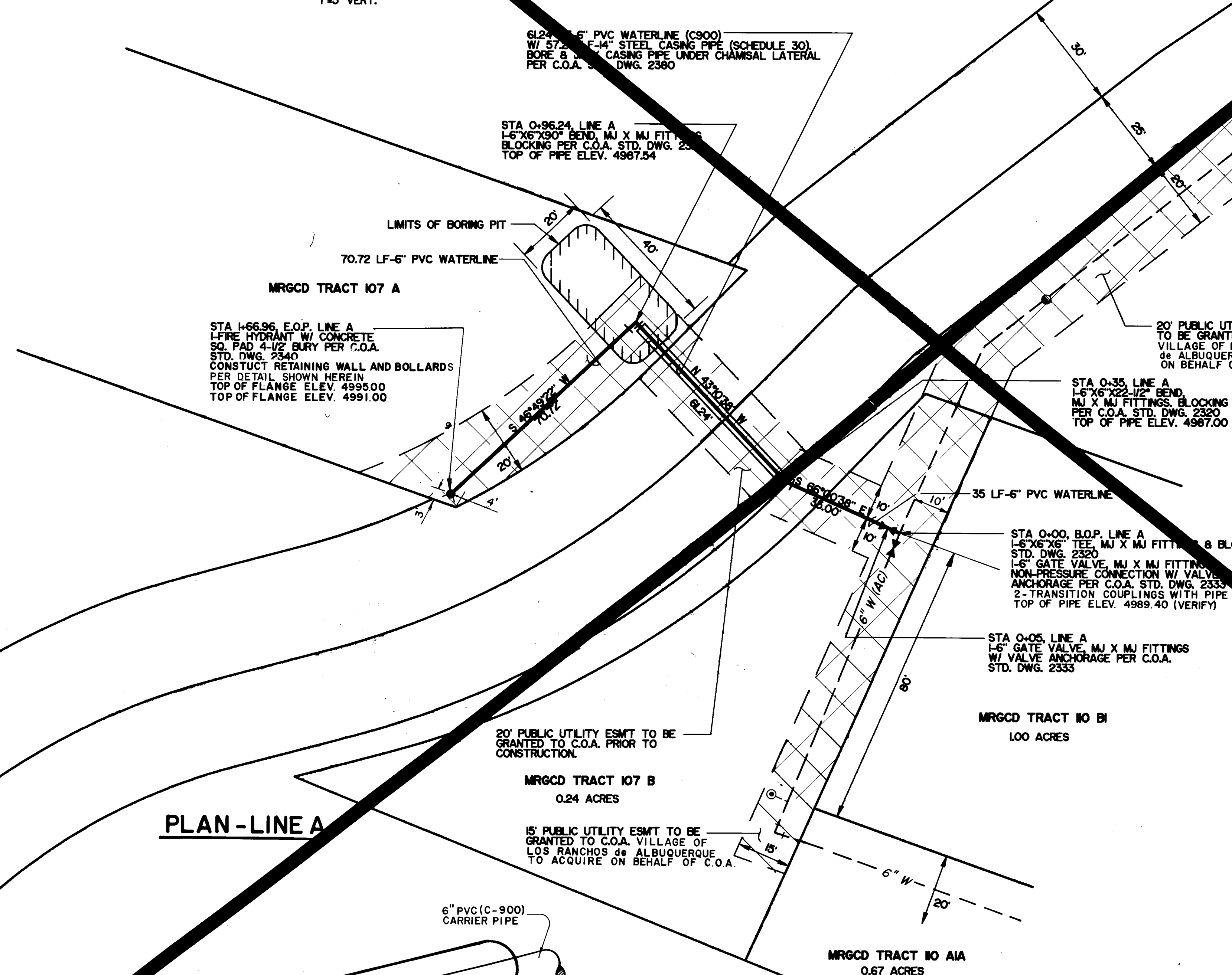
REV.	SHEETS	DATE	USER DEPARTMENT	DATE	USER DEPARTMENT	DATE
3		4-28-93	K.W. Kane	4-20-93		

APPROVAL OF REVISIONS

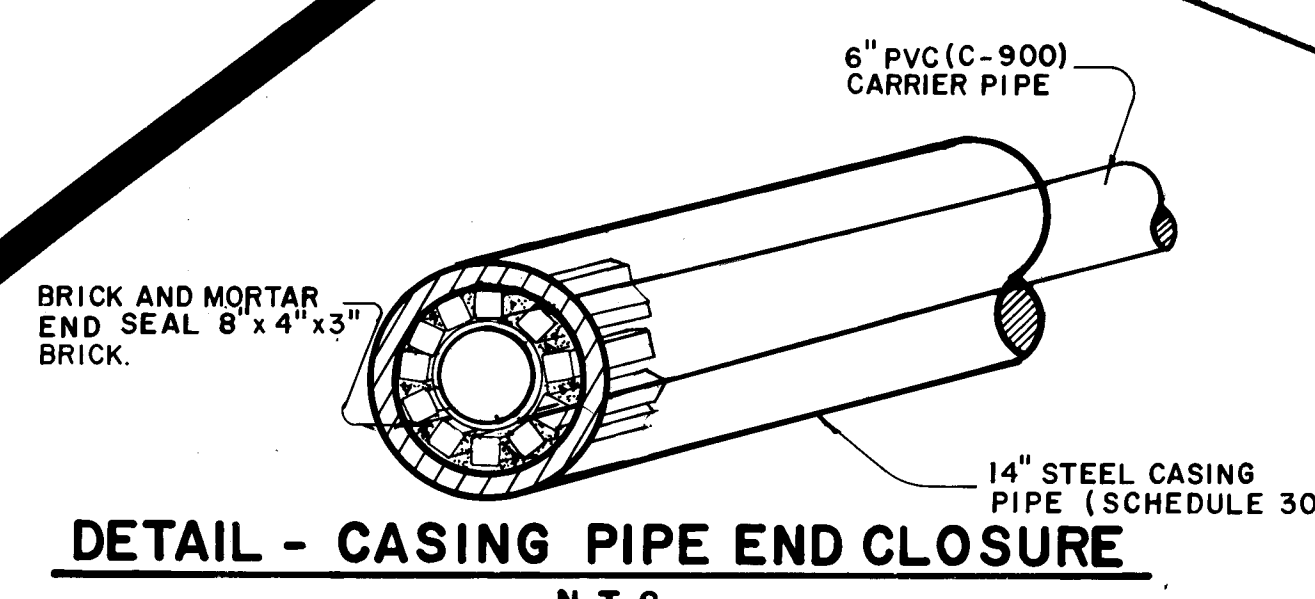
	<b>EASTERLING &amp; ASSOCIATES, INC.</b> CONSULTING ENGINEERS 10131 Coors Rd., NW, Suite H-718 ALBUQUERQUE, NEW MEXICO 87114 (505) 898-8021 FAX (505) 898-8501	APPROVED FOR CONSTRUCTION <i>Kenneth B. Yule</i> CITY ENGINEER 12-15-92 DATE
	PROJECT NUMBER <b>4323.90</b>	SHEET <b>1</b> OF <b>4</b>



PROFILE-LINE A  
SCALE: 1"=20' HORIZ.  
1"=5' VERT.

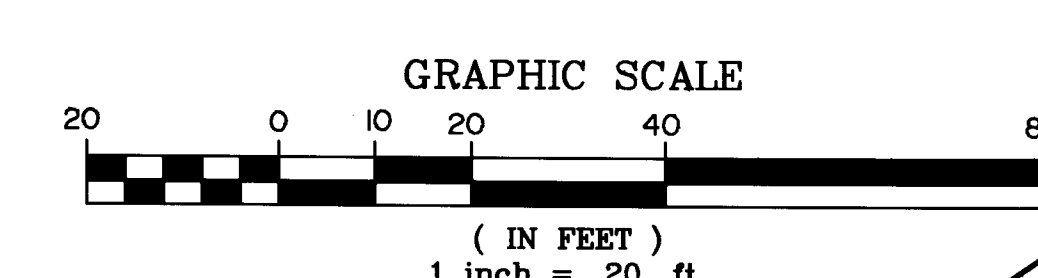
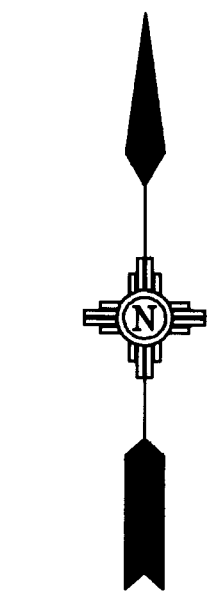


PLAN-LINE A

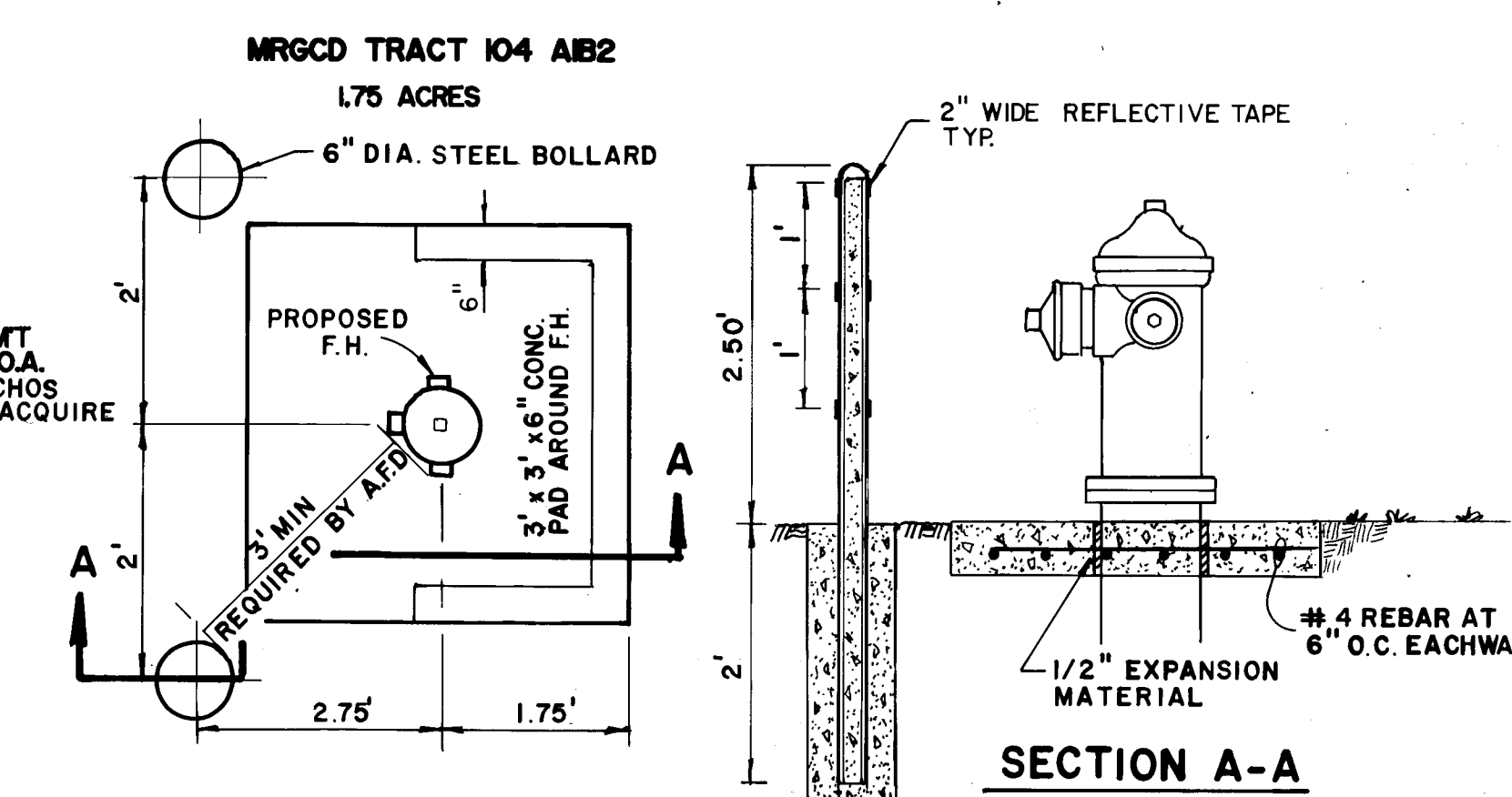


DETAIL - CASING PIPE END CLOSURE  
N.T.S.

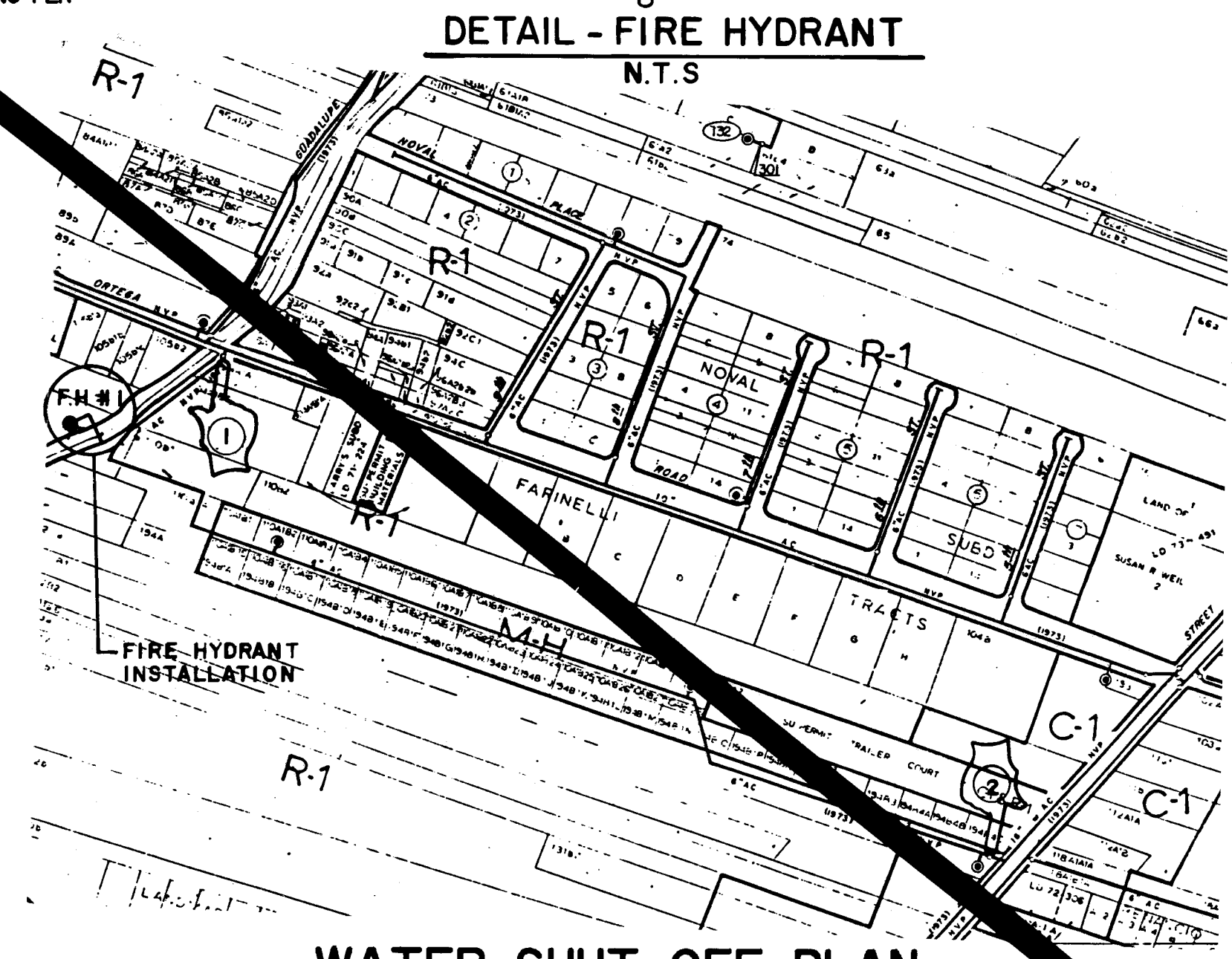
ZONE MAP NO. C-15  
MRGCD MAP 24



CHAMISAL LATERAL R.O.W.  
DIRT ROAD (PRIVATE)  
6" W (AC)



DETAIL - FIRE HYDRANT  
N.T.S.



WATER SHUT OFF PLAN

To complete the non-pressure connection shown, the existing valves listed below and marked with an arrow on the above map must be closed by PWD/Water Systems personnel.

MAP #  
C-15  
VALVES #  
1 AND 2

NOTICE TO CONTRACTORS

1. All work detailed on these plans to be performed under contract shall, except as otherwise stated or provided for herein, be constructed in accordance with the City of Albuquerque Standard Specifications for Public Works Construction 1986.

2. Two (2) working days prior to any excavation, contractor must contact Line Locating Service, 260-1990, for location of existing utilities.

3. Prior to construction, the contractor shall excavate and verify the horizontal and vertical location of all obstructions. Should a conflict exist, the contractor shall notify the engineer or surveyor so the conflict can be resolved with a minimum amount of delay.

4. Three (3) working days prior to beginning construction, the contractor shall submit to the Construction Coordination Division a detailed construction schedule. Two (2) working days prior to construction, the contractor shall obtain a barricade permit from the Construction Coordination Division. Contractor shall notify the Traffic Engineer (768-5551) prior to occupying an intersection. Refer to Section 15.01 of the Specifications.

5. All work on this project shall be performed in accordance with applicable federal, state, and local laws, rules, and regulations concerning construction safety and health. These drawings do not include necessary components for construction safety which shall remain the contractor's responsibility.

6. Contractor shall notify MRGCD (Phone 243-6796) a minimum of 7 calendar days prior to excavating boring pit. Contractor shall coordinate with ditch rider to lower water level in Chamisal lateral during boring operation. The contractor shall be limited to a 2-day period during which the water level will be lowered.

7. Contractor shall remove and replace in kind or better existing landscaping materials, curbing, paving, other surface and/or subsurface improvements as may be required to complete the work as shown here.

8. CONTRACTOR shall be responsible for timing and coordination of Water Shut-off requirements in connection with completion of this project.

At least THREE (3) working days prior to construction, CONTRACTOR shall contact PWD/Water Systems Division (850-2200) to initiate implementation of this Water Shut-off Plan.

THE FOLLOWING NOTES ALSO APPLY WHEN CHECKED

[X] All utilities and utility service lines shall be installed prior to paving.

[X] Backfill compaction shall be according to specified street use.

[X] Traffic control requirements shall be determined by the City Engineer.

[ ] Sidewalks and wheelchair ramps with the curb returns shall be constructed whenever new curb return is constructed.

[ ] If curb is depressed for a driveway or handicap ramp, the driveway or ramp shall be constructed prior to acceptance of the curb and gutter.

[ ] All storm drainage facilities shall be completed prior to final acceptance.

SCANNED BY  
BY LASON

EASTERLING & ASSOCIATES, INC.  
CONSULTING ENGINEERS  
10131 Coors Rd., NW, Suite H-718  
ALBUQUERQUE, NEW MEXICO 87114  
(505) 898-8021 FAX (505) 898-8501

CITY OF ALBUQUERQUE  
PUBLIC WORKS DEPARTMENT  
ENGINEERING GROUP

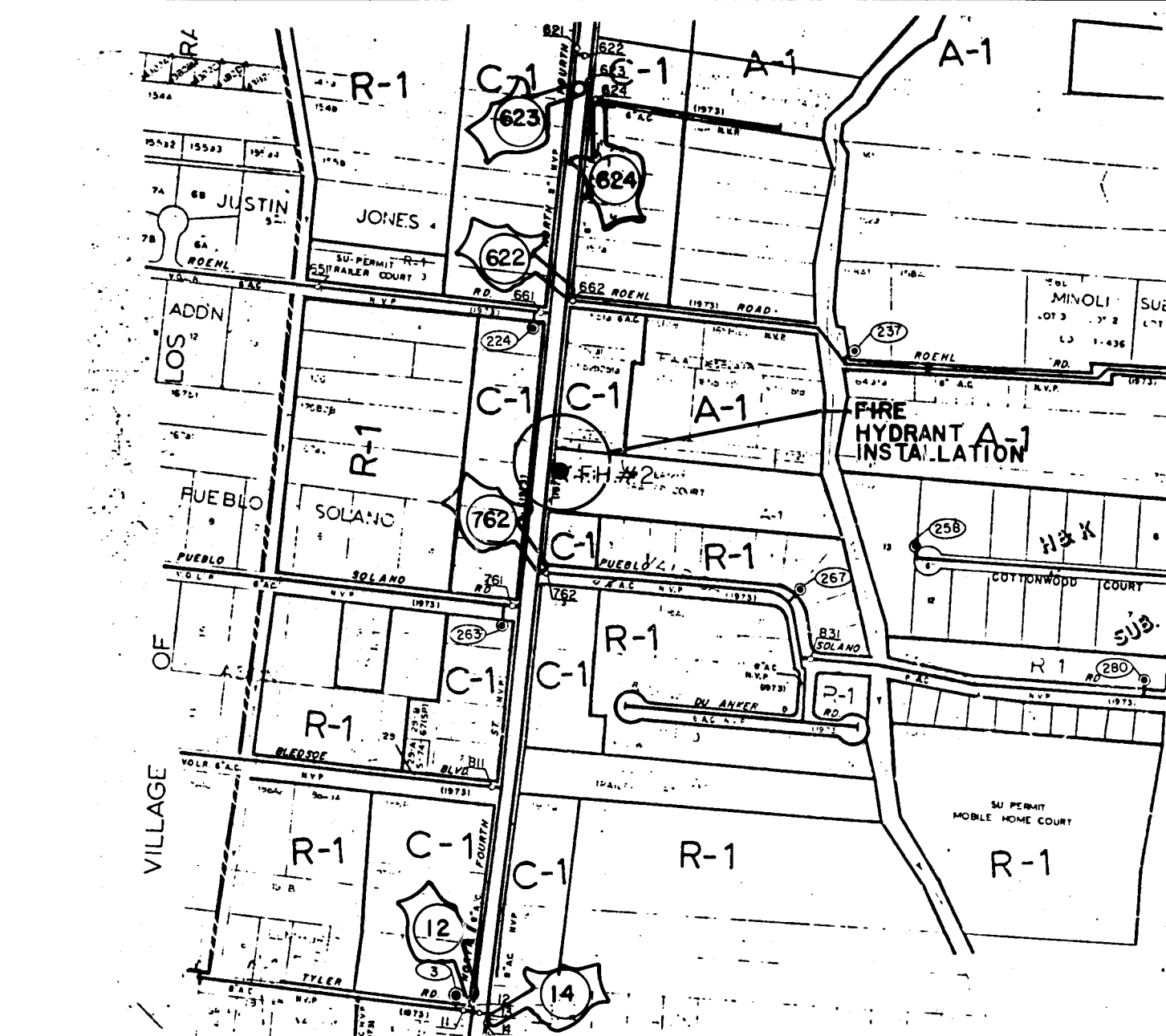
TITLE: Village Of Los Ranchos De Albuquerque  
FIRE HYDRANT NO. 1

APPROVALS	ENGINEER	DATE	APPROVALS	ENGINEER	DATE
D.R.C. Chair			WATER	R.W. Kane	8-4-92
TRANS. DEV.	N/A		WASTE WATER	R.W. Kane	8-4-92
HYDROLOGY	N/A				

PROJECT NO. 4323.90 MAP NO. C-15 SHEET 2 OF 4

26-197237.170 10297





### WATER SHUT OFF PLAN

To complete the non-pressure connection shown, the existing valves listed below and marked with an arrow on the above map must be closed by PWD/Water Systems personnel.

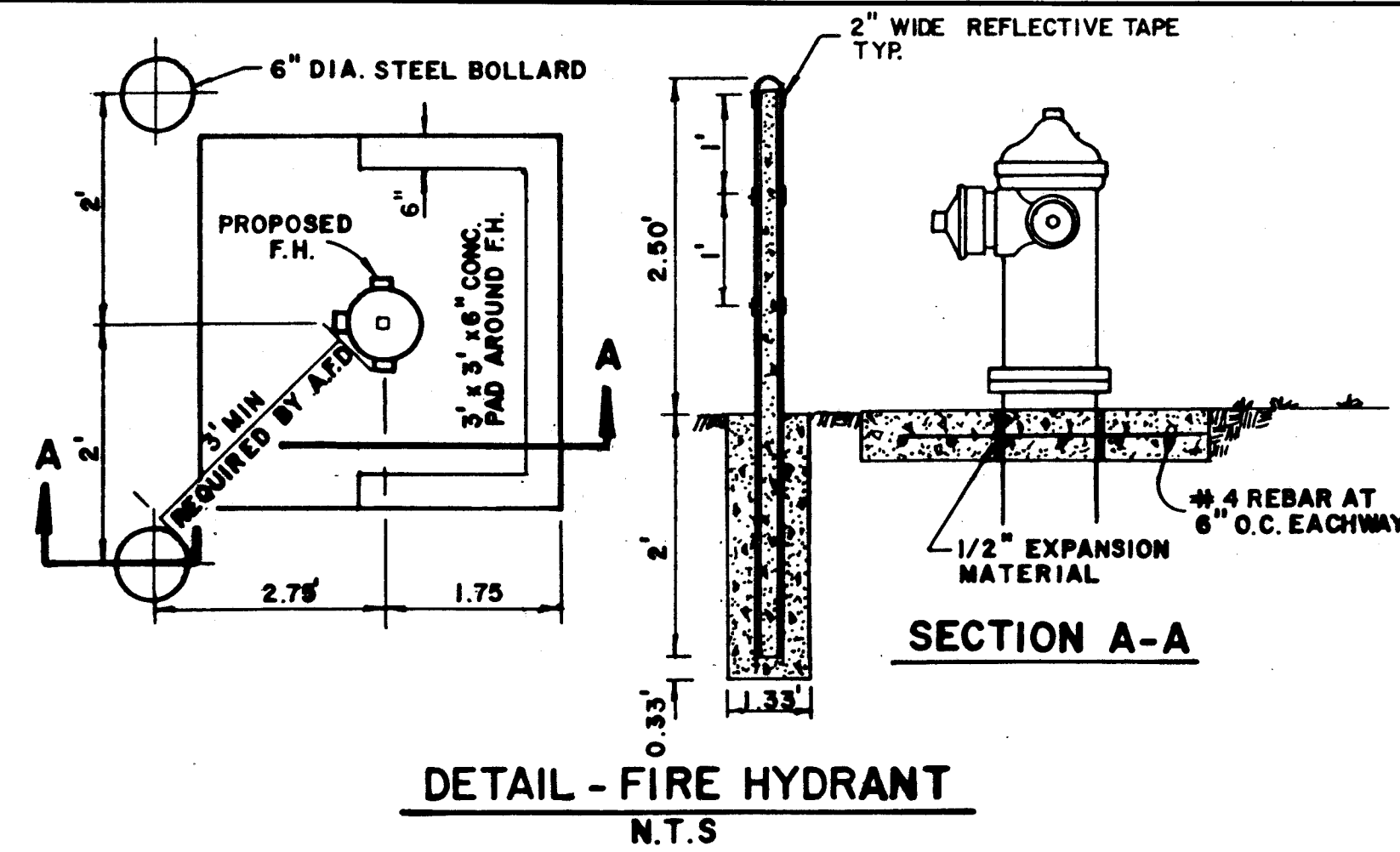
MAP #  
D-15  
VALVE #  
623 762  
624 13  
662 14



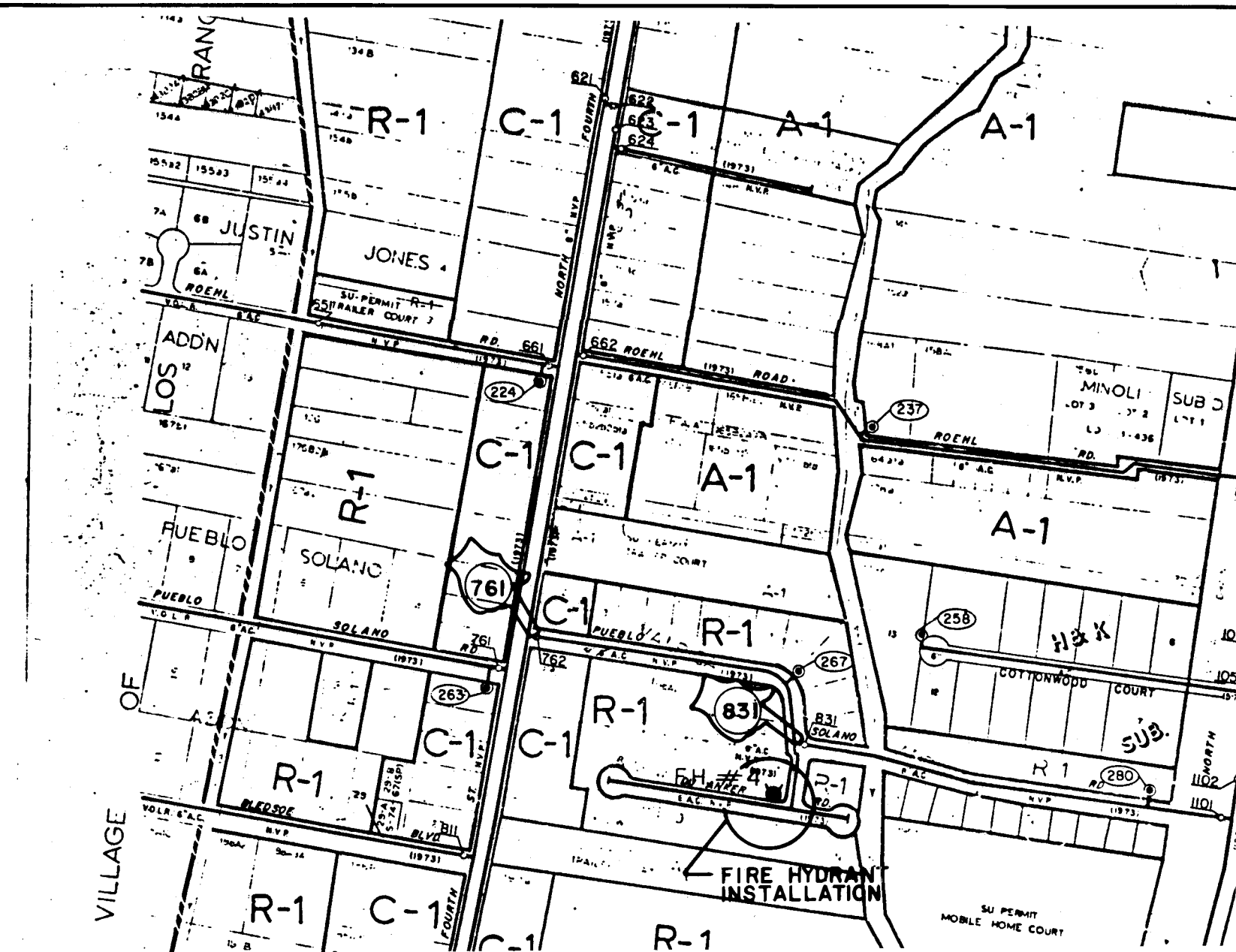
### WATER SHUT OFF PLAN

To complete the non-pressure connection shown, the existing valves listed below and marked with an arrow on the above map must be closed by PWD/Water Systems personnel.

MAP #  
E-15  
VALVES #  
251 11  
151 12  
53 13



### DETAIL - FIRE HYDRANT N.T.S



### WATER SHUT OFF PLAN

To complete the non-pressure connection shown, the existing valves listed below and marked with an arrow on the above map must be closed by PWD/Water Systems personnel.

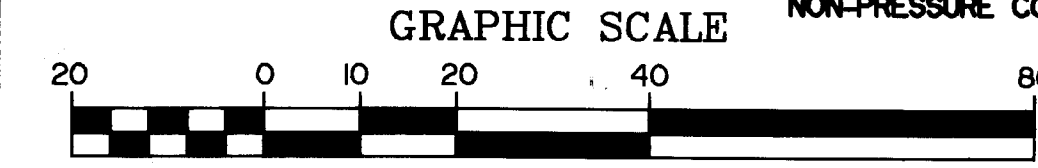
MAP #  
D-15  
VALVES #  
762  
863

### LOT K C.F. & LENA BISHOP SUBDIVISION

1-FIRE HYDRANT W/ CONCRETE SQ. PAD, 4-1/2" BURY, PER C.O.A. STD. DWG. 2340  
TOP OF FLANGE ELEV. 4985.50  
2 - 6" DIA. GUARD POSTS - SEE DETAIL THIS SHEET.

REMOVE & REPLACE RESIDENTIAL P.V.M.T. THIS AREA.

1 - 8" GATE VALVE WITH TYPE "A" BOX  
2 - TRANSITION COUPLINGS W/ PIPE  
1 - 8" x 6" TEE, MU x MU  
FITTINGS W/ BLOCKING PER C.O.A. STD. DWG. 2320, 2325, AND 2333  
NON-PRESSURE CONNECTION



ZONE MAP NO. D-15  
MRGCD MAP 27

### PLAN - FIRE HYDRANT NO. 4

- NOTICE TO CONTRACTORS**
- All work detailed on these plans to be performed under contract shall, except as otherwise stated or provided for hereon, be constructed in accordance with the City of Albuquerque Standard Specifications for Public Works Construction 1986.
  - Two (2) working days prior to any excavation, contractor must contact Line Locating Service, 260-1990, for location of existing utilities.
  - Prior to construction, the contractor shall excavate and verify the horizontal and vertical location of all obstructions. Should a conflict exist, the contractor shall notify the engineer or surveyor so the conflict can be resolved with a minimum amount of delay.
  - Three (3) working days prior to beginning construction, the contractor shall submit to Construction Coordination Division a detailed construction schedule. Two (2) working days prior to construction, the contractor shall obtain a barricading permit from the Construction Coordination Division. Contractor shall notify Barricade Engineer (768-2551) prior to occupying an intersection. Refer to Section 19 of the Specifications.
  - All work on this project shall be performed in accordance with applicable federal, state, and local laws, rules, and regulations concerning construction safety and health. These drawings do not include necessary components for construction safety which shall remain the contractor's responsibility.

Contractor shall remove and replace in kind or better existing landscaping materials, curbing, paving, other surface and/or subsurface improvements as may be required to complete the work as shown herein.

#### WATER SHUT-OFF REQUIREMENTS

CONTRACTOR shall be responsible for timing and coordination of the Water Shut-off requirements in conjunction with completion of this project.

At least THREE (3) working days prior to construction, CONTRACTOR shall contact PWD/Water Systems Division (857-8200) to initiate implementation of this Water Shut-off Plan.

#### THE FOLLOWING NOTES ALSO APPLY WHEN CHECKED

- [X] All utilities and utility service lines shall be installed prior to paving.
- [X] Backfill compaction shall be according to specified street use.
- [X] Tack coat requirements shall be determined by the City Engineer.
- [ ] Sidewalks and wheelchair ramps within the curb returns shall be constructed wherever a new curb return is constructed.
- [ ] If curb is depressed for a driveway or a handicap ramp, the driveway or ramp shall be constructed prior to acceptance of the curb and gutter.
- [ ] All storm drainage facilities shall be completed prior to final acceptance.

SCANNED BY  
BY LASON

20-43 23.90 10397

**EASTERLING & ASSOCIATES, INC.**  
CONSULTING ENGINEERS  
10131 Coors Rd., NW, Suite H-7/B  
ALBUQUERQUE, NEW MEXICO 87114  
(505) 898-8021 FAX (505) 898-8501

CITY OF ALBUQUERQUE  
PUBLIC WORKS DEPARTMENT  
ENGINEERING GROUP

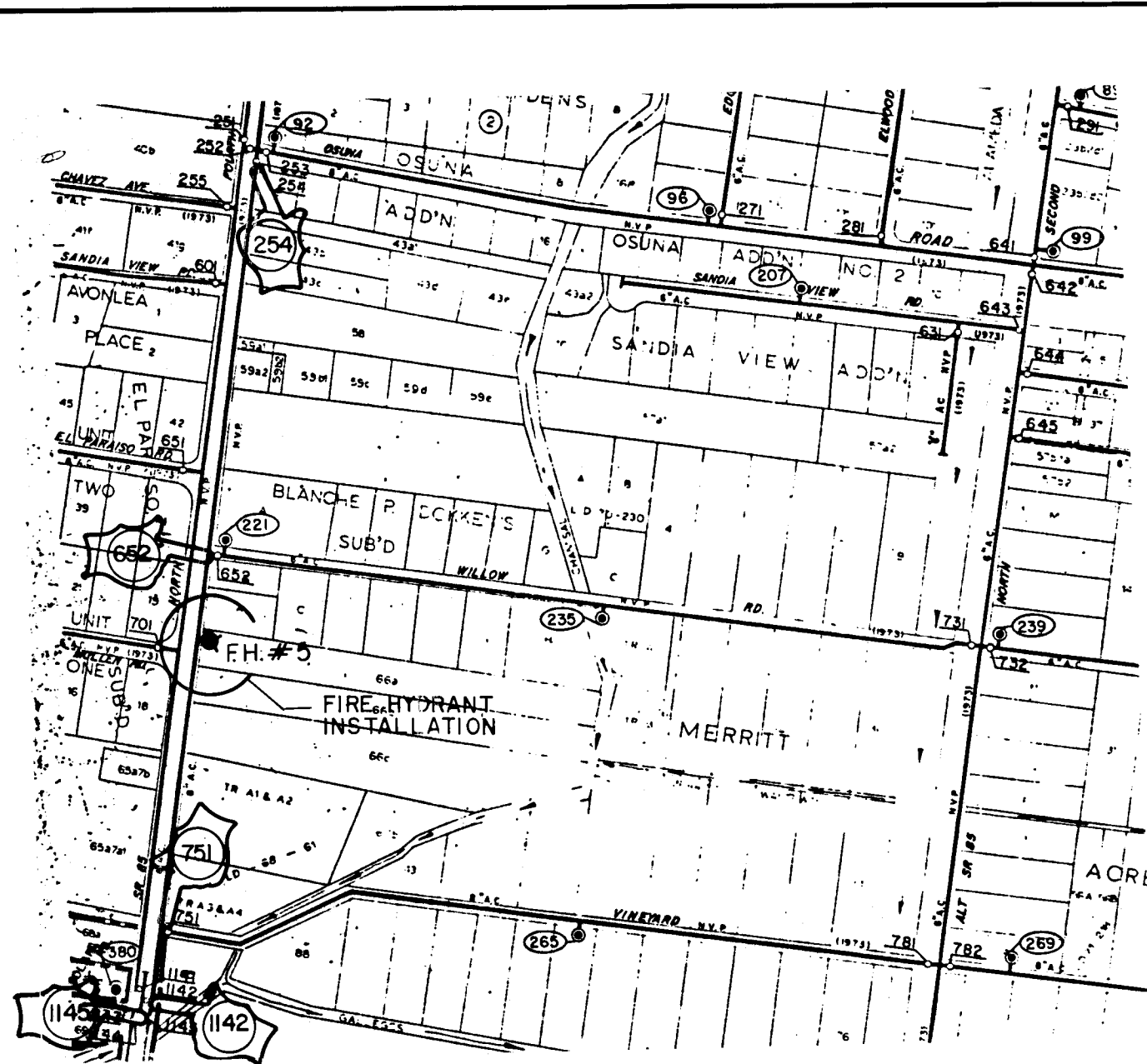
TITLE: **Village Of Los Ranchos De Albuquerque  
FIRE HYDRANTS NO. 2, 3 & 4**

APPROVALS	ENGINEER	DATE	APPROVALS	ENGINEER	DATE
D.R.C. Chair	R. W. Kane	8-12-92	WATER	R. W. Kane	8-12-92
TRANS. DEV.	N/A		WASTE WATER	R. W. Kane	8-12-92
HYDROLOGY	N/A				

PROJECT NO. **4323.90** MAP NO. **D-15 E-15** SHEET **3** OF **4**

AS BUILT INFORMATION		CONTRACTOR		DATE	
STATION 9+06 - ALUMINUM CAP STAMPED "9-16 1986"	DATE	6/91	NO.	1	1
SET 0.05 FT. ABOVE PAVEMENT AT THE S.W. CORNER OF	DATE	6/91	NO.	1	1
ROSEL ROAD AND FOURTH STREET - LOCATED 5.7 MILES	DATE	6/91	NO.	1	1
NORTH OF DOWNTOWN ALBUQUERQUE.	DATE	6/91	NO.	1	1
N 156.509.47	DATE	6/91	NO.	1	1
E 384.744.92	DATE	6/91	NO.	1	1
ELEV. 4986.07	DATE	6/91	NO.	1	1
RECORDED BY	DATE	6/91	NO.	1	1
NO.	DATE	6/91	NO.	1	1

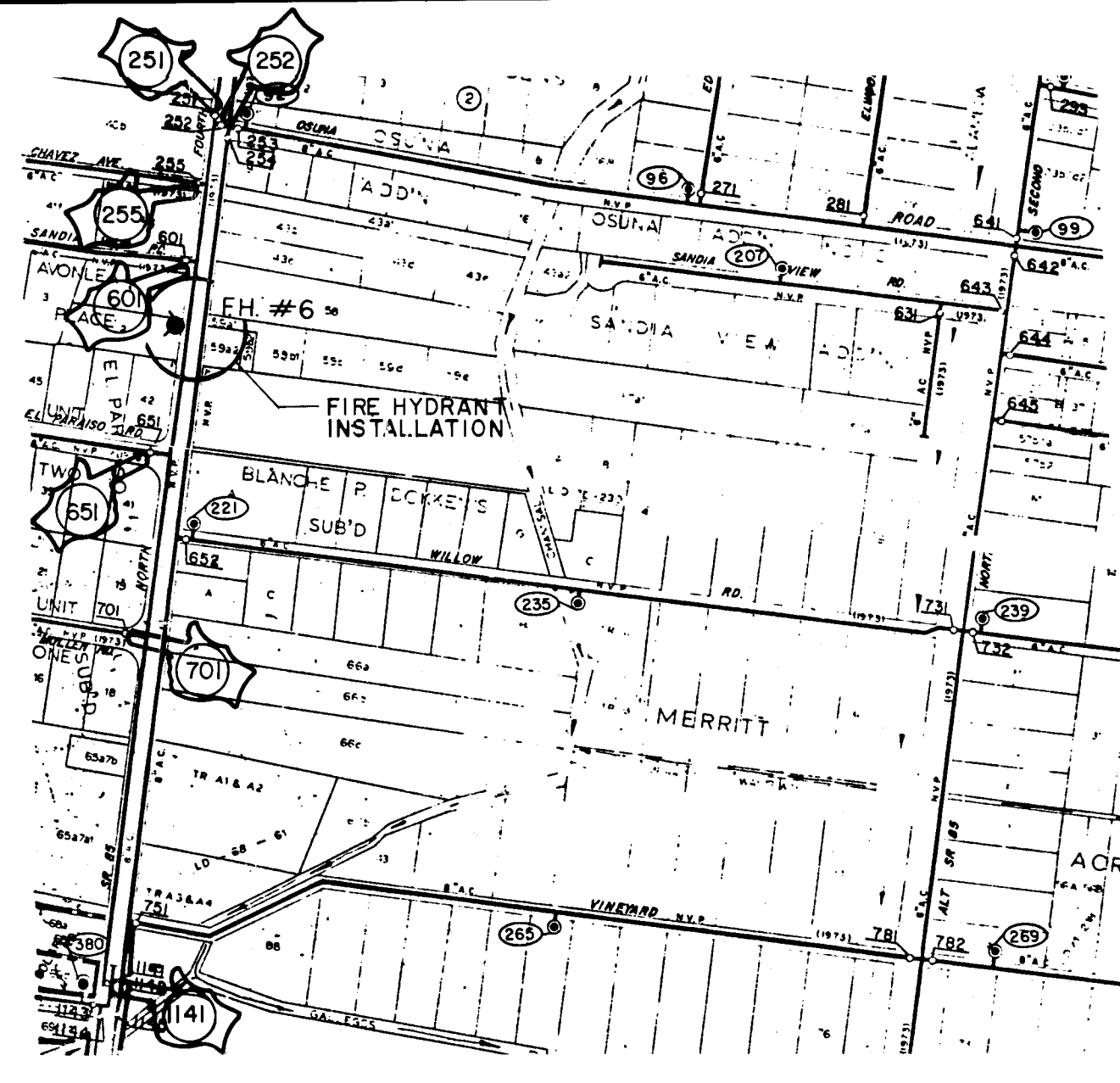




### WATER SHUT OFF PLAN

To complete the non-pressure connection shown, the existing valves listed below and marked with an arrow on the above map must be closed by PWD/Water Systems personnel.

MAP #  
E-15  
VALVES #  
254 1142  
652 1145  
751



### WATER SHUT OFF PLAN

To complete the non-pressure connection shown, the existing valves listed below and marked with an arrow on the above map must be closed by PWD/Water Systems personnel.

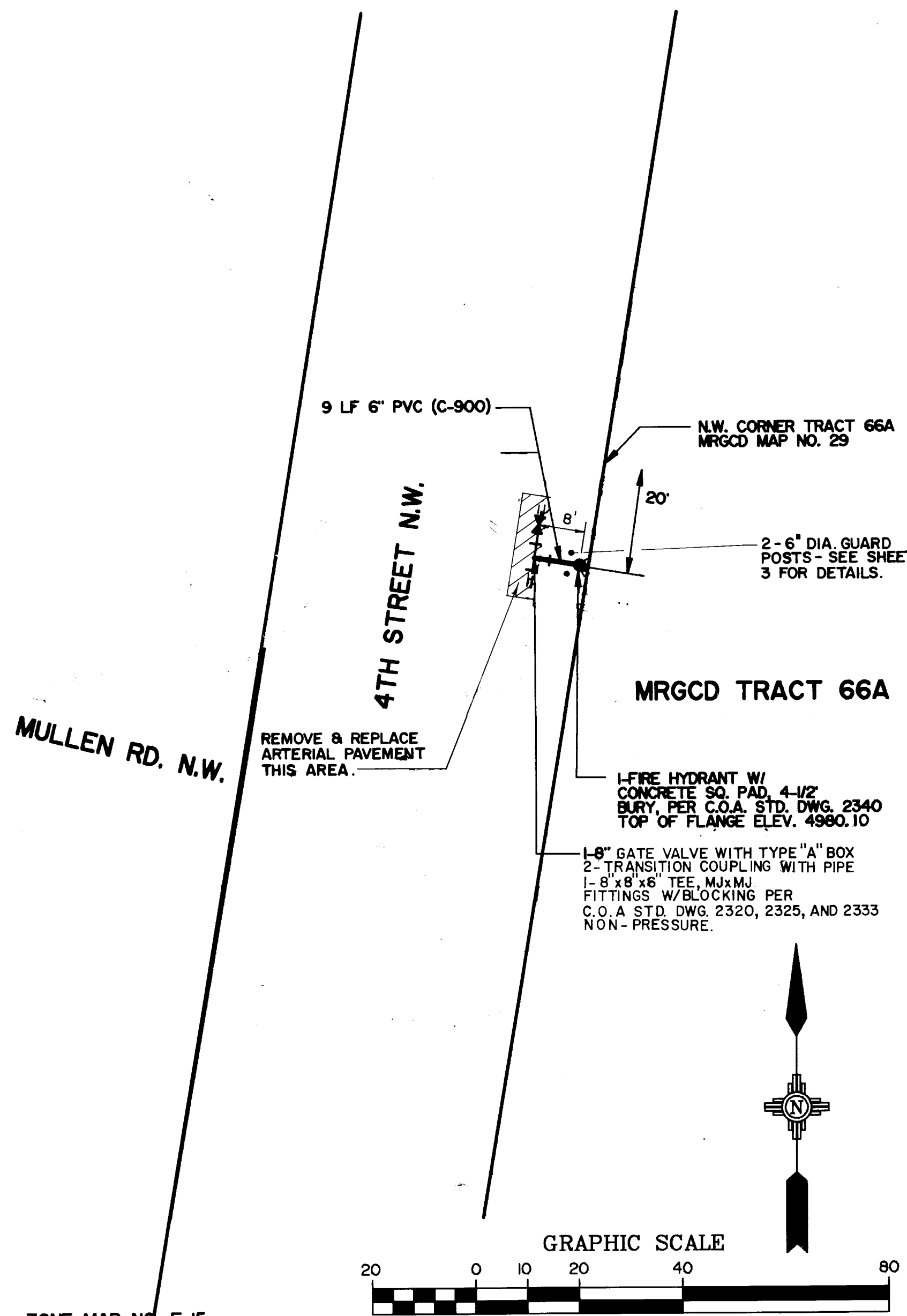
MAP #  
E-15  
VALVES #  
251 601  
252 651  
255 701  
1141



### WATER SHUT OFF PLAN

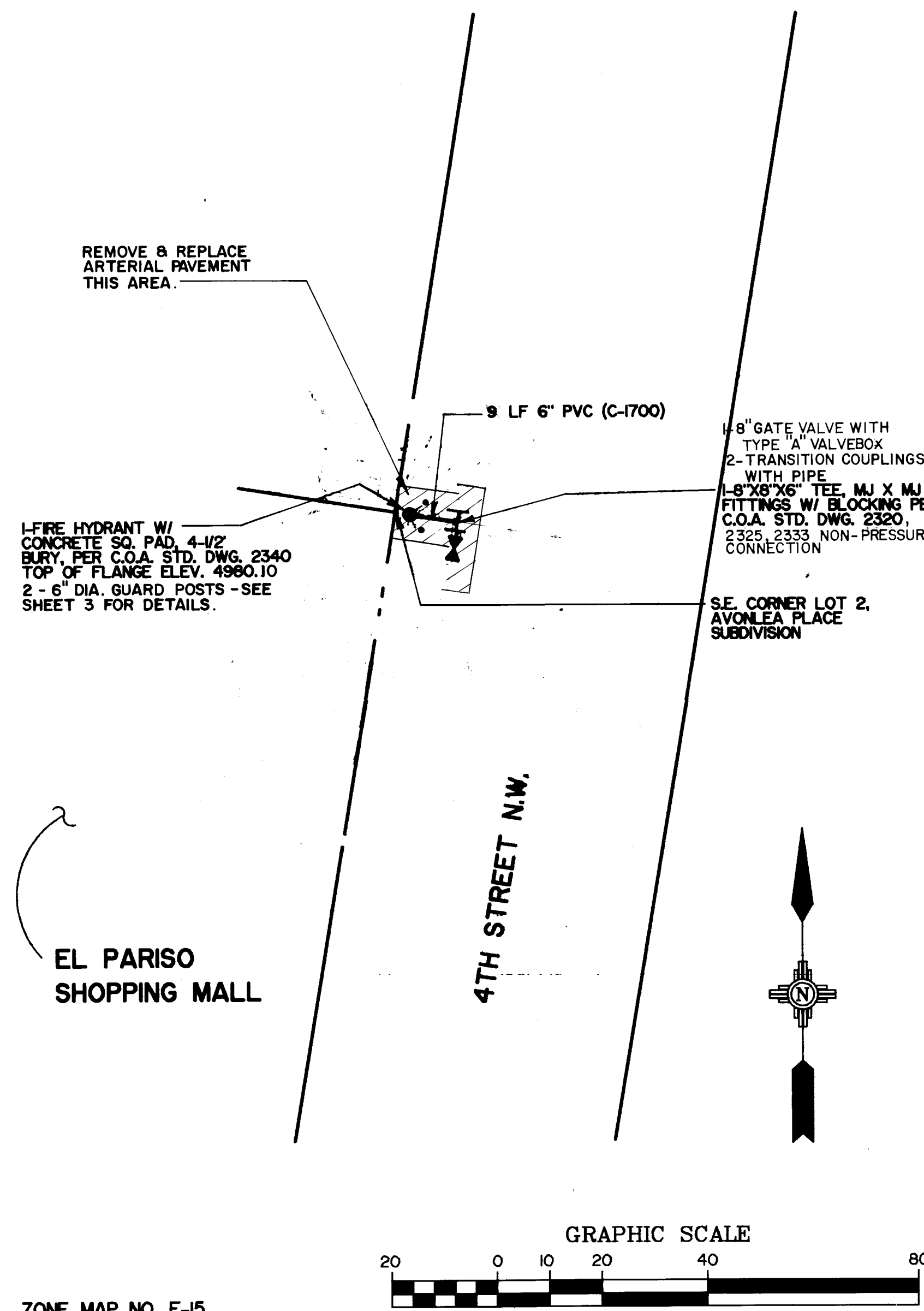
To complete the non-pressure connection shown, the existing valves listed below and marked with an arrow on the above map must be closed by PWD/Water Systems personnel.

MAP #  
E-15  
VALVES #  
13 201  
14 252  
61 253  
152 254



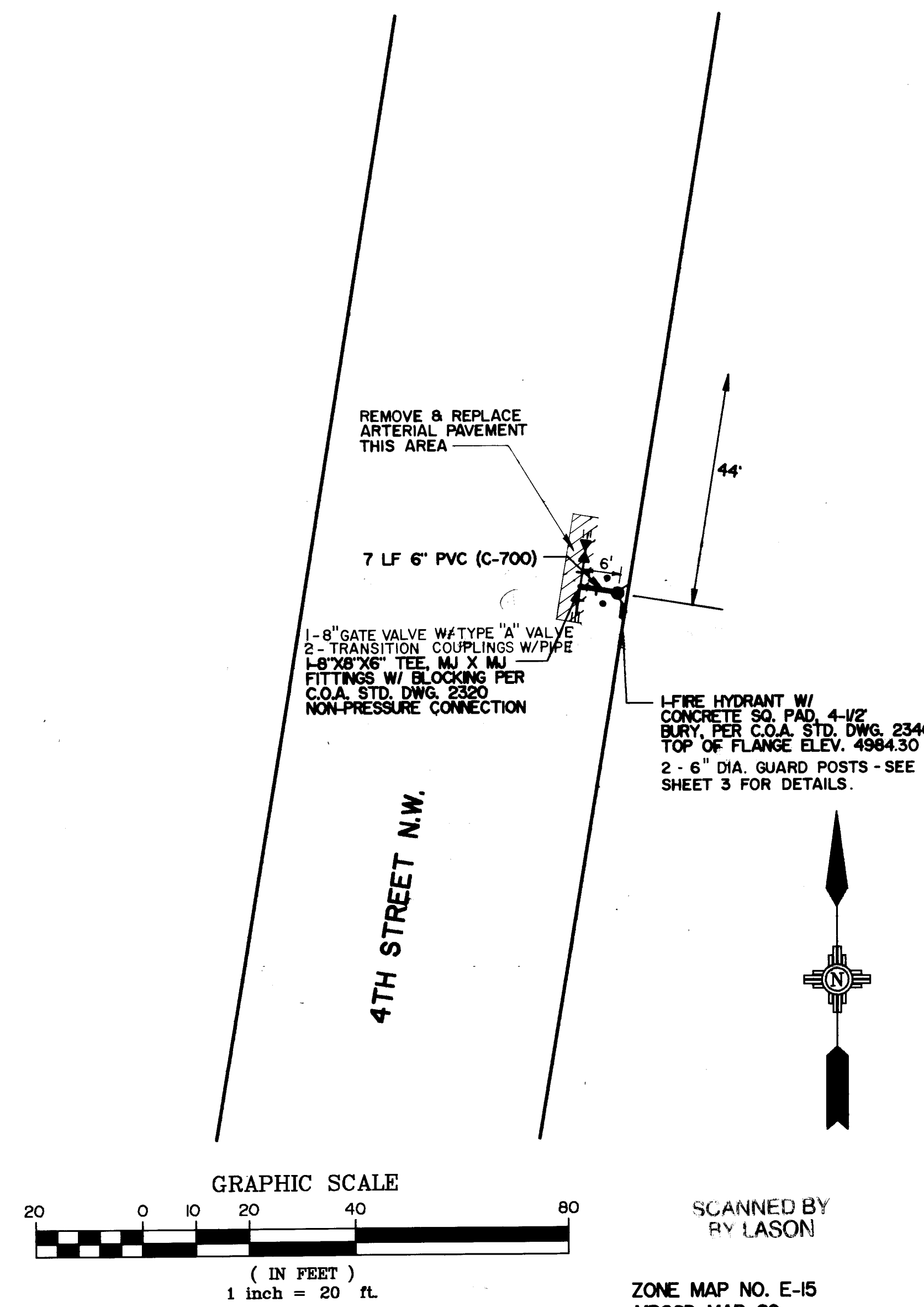
ZONE MAP NO. E-15  
MRGCD MAP 29

PLAN - FIRE HYDRANT NO. 5



ZONE MAP NO. E-15  
MRGCD MAP 29

PLAN - FIRE HYDRANT NO. 6



SCANNED BY  
RY LASON

ZONE MAP NO. E-15  
MRGCD MAP 29

PLAN - FIRE HYDRANT NO. 7

### NOTICE TO CONTRACTORS

- All work detailed on these plans to be performed under contract shall, except as otherwise stated or provided for herein, be constructed in accordance with the City of Albuquerque Standard Specifications for Public Works Construction 1996.
- Two (2) working days prior to any excavation, contractor must contact Line Locating Service, 260-1990, for location of existing utilities.
- Prior to construction, the contractor shall excavate and verify the horizontal and vertical location of all obstructions. Should a conflict exist, the contractor shall notify the engineer or surveyor so the conflict can be resolved with a minimum amount of delay.
- Three (3) working days prior to beginning construction, the contractor shall submit to Construction Coordination Division a detailed construction schedule. Two (2) working days prior to construction, the contractor shall obtain a barricading permit from the Construction Coordination Division. Contractor shall notify Barricade Engineer (768-2551) prior to occupying an intersection. Refer to Section 19 of the Specifications.
- All work on this project shall be performed in accordance with applicable federal, state, and local laws, rules, and regulations concerning construction safety and health. These drawings do not include necessary components for construction safety which shall remain the contractor's responsibility.

- Contractor shall remove and replace in kind or better existing landscaping materials, existing paving, other surface and subsurface improvements as may be required to complete the work as shown herein.

**WATER SHUT OFF PLAN-GENERAL REQUIREMENTS**  
CONTRACTOR shall be responsible for timing and coordination of the Water Shut-off requirements in conjunction with completion of this project.

At least THREE (3) working days prior to construction, CONTRACTOR shall contact PWD/Water Systems Division (857-8200) to initiate implementation of this Water Shut-off Plan.

**THE FOLLOWING NOTES ALSO APPLY WHEN CHECKED**

- ☒ All utilities and utility service lines shall be installed prior to paving.
- ☒ Backfill compaction shall be according to specified street use.
- ☒ Tack coat requirements shall be determined by the City Engineer.
- ☐ Sidewalks and wheelchair ramps within the curb returns shall be constructed wherever a new curb return is constructed.
- ☐ If curb is depressed for a driveway or a handicap ramp, the driveway or ramp shall be constructed prior to acceptance of the curb and gutter.
- ☐ All storm drainage facilities shall be completed prior to final acceptance.

ENGINEERS SEAL		REVISIONS		DATE	
		NO.	DATE	DESIGNED BY	DATE
		NO.	DATE	DRAWN BY	DATE
		REMARKS	DATE	DESIGNED BY	DATE
		DESIGN	DATE	DRAWN BY	DATE
		DATE	DATE	CHECKED BY	DATE

**EASTERLING & ASSOCIATES, INC.**  
CONSULTING ENGINEERS  
10131 Coors Rd., NW, Suite H-718  
ALBUQUERQUE, NEW MEXICO 87114  
(505) 898-8021 FAX (505) 898-8501

CITY OF ALBUQUERQUE  
PUBLIC WORKS DEPARTMENT  
ENGINEERING GROUP

TITLE: **Village Of Los Ranchos De Albuquerque  
FIRE HYDRANTS NO. 5, 6, 7**

APPROVALS	ENGINEER	DATE	APPROVALS	ENGINEER	DATE
D.R.C. Chair	R. W. Kane	8-4-92	WATER	R. W. Kane	8-4-92
TRANS. DEV.	N/A		WASTE WATER	R. W. Kane	8-4-92
HYDROLOGY	N/A				

PROJECT NO. **4323.90**

MAP NO. **D-15  
E-15**

SHEET **4** OF **4**