

CONSTRUCTION PLANS FOR  
WORK IN THE PUBLIC RIGHT OF WAY

ILIFF ROAD AT  
DAYS INN MOTEL

DRAWING INDEX

SHEET TITLE

COVER SHEET  
PLAT SHEET  
GRADING AND DRAINAGE PLAN (FOR INFORMATION ONLY)  
UTILITIES PLAN AND PROFILE  
OVERALL PAVING PLAN AND PAVING DETAILS  
ILIFF ROAD PAVING PLAN AND PROFILE

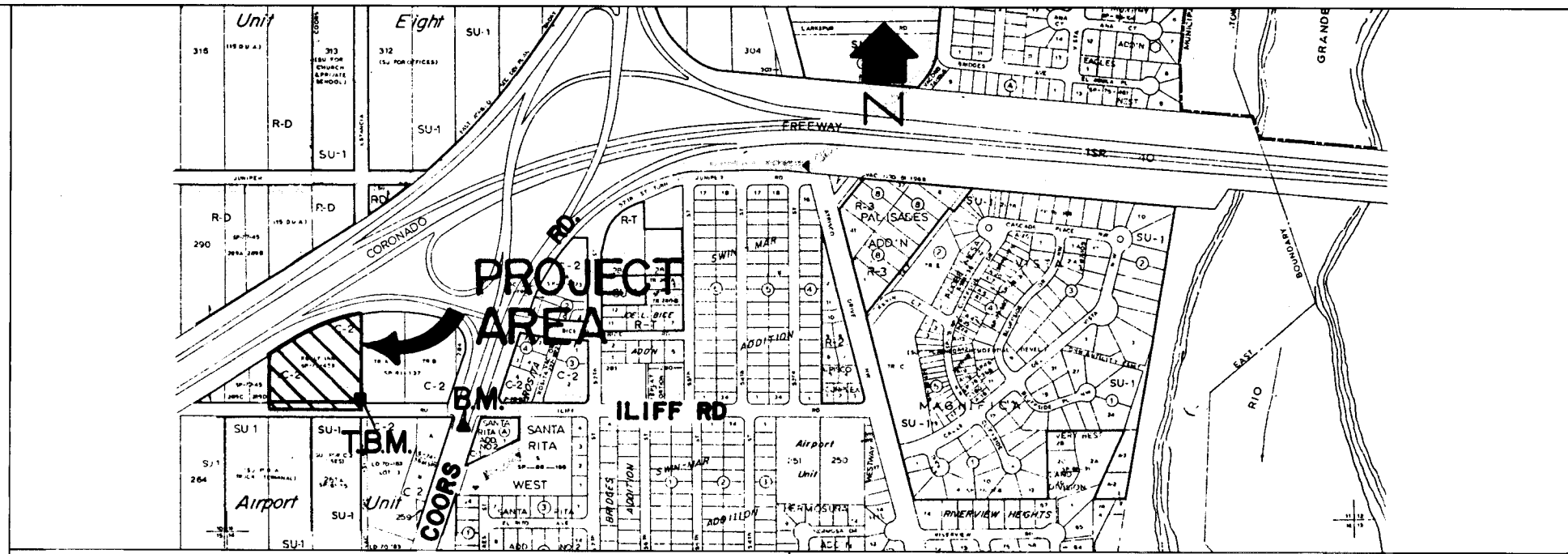
SHEET NO.

1  
2  
3  
4  
5  
6

26 4396 900192

APPROVAL OF AS BUILT DRAWINGS  
CHIEF CONSTRUCTION ENGINEER  
DATE 7/15/92

APPROVED FOR CONSTRUCTION  
DATE 4/1/92



VICINITY MAP N.T.S.

MAP NO. H-11

GENERAL NOTES

- ALL WORK DETAILED ON THESE PLANS TO BE PERFORMED UNDER CONTRACT SHALL, EXCEPT AS OTHERWISE STATED OR PROVIDED FOR HEREIN, BE CONSTRUCTED IN ACCORDANCE WITH THE CITY OF ALBUQUERQUE STANDARD SPECIFICATIONS FOR PUBLIC WORKS CONSTRUCTION 1986 INCLUDING CURRENT UPDATES (MAY ALSO BE REFERRED TO AS THE STANDARD SPECIFICATIONS, OR COA STDS ).
- REFERENCE MADE TO STANDARD DRAWINGS (SD) REFER TO CITY OF ALBUQUERQUE STANDARD DRAWINGS.
- ALL WORK ON THIS PROJECT SHALL BE PERFORMED IN ACCORDANCE WITH APPLICABLE FEDERAL, STATE AND LOCAL LAWS, RULES AND REGULATIONS CONCERNING CONSTRUCTION SAFETY AND HEALTH.
- ALL WORK SHALL BE DONE BY QUALIFIED PERSONNEL IN AN APPROVED STANDARD OF PRACTICE.
- ALL STATIONING IS TO CENTERLINE OF RIGHT-OF-WAY.
- CONCRETE SHALL MEET THE REQUIREMENTS OF TABLE 101 (SEE SHEET 6 OF 6 FOR LATEST REVISION) OF THE GENERAL CONDITIONS.
- WATERING, AS REQUIRED FOR CONSTRUCTION AND DUST CONTROL, SHALL BE CONSIDERED INCIDENTAL TO CONSTRUCTION AND NO MEASUREMENT OR PAYMENT SHALL BE MADE THEREFOR. CONSTRUCTION AREAS SHALL BE WATERED FOR DUST POLLUTION ABATEMENT AS DIRECTED BY THE ENGINEER. THE CONTRACTOR SHALL BE RESPONSIBLE FOR LOCATING AND SUPPLYING WATER AS REQUIRED.
- CONTRACTOR IS RESPONSIBLE FOR OBTAINING ALL PERMITS TO CONSTRUCT FACILITIES WITHIN CITY RIGHT-OF-WAY. AN EXCAVATION/CONSTRUCTION PERMIT WILL BE REQUIRED BEFORE BEGINNING ANY WORK WITHIN CITY RIGHT-OF-WAY. AN APPROVED COPY OF THESE PLANS MUST BE SUBMITTED AT THE TIME OF APPLICATION FOR THIS PERMIT.
- CONTRACTOR SHALL NOTIFY THE ENGINEER NOT LESS THAN SEVEN (7) DAYS PRIOR TO STARTING WORK IN ORDER THAT THE ENGINEER MAY TAKE NECESSARY MEASURES TO INSURE THE PRESERVATION OF SURVEY MONUMENTS. CONTRACTOR SHALL NOT DISTURB PERMANENT SURVEY MONUMENTS WITHOUT THE CONSENT OF THE ENGINEER AND SHALL NOTIFY THE ENGINEER AND BEAR THE EXPENSE OF REPLACING ANY THAT MAY BE DISTURBED WITHOUT PERMISSION. REPLACEMENT SHALL BE DONE ONLY BY THE ENGINEER. WHEN A CHANGE IS MADE IN THE FINISHED ELEVATION OF THE PAVEMENT OF ANY ROADWAY IN WHICH A PERMANENT SURVEY MONUMENT IS LOCATED, CONTRACTOR SHALL, AT HIS OWN EXPENSE, ADJUST THE MONUMENT COVER TO THE NEW GRADE UNLESS OTHERWISE SPECIFIED. REFER TO SECTION 4.4 OF THE GENERAL CONDITIONS.
- TWO (2) WORKING DAYS PRIOR TO ANY EXCAVATION, CONTRACTOR MUST CONTACT LINE LOCATING SERVICE, 260-1990, FOR LOCATION OF EXISTING UTILITIES.
- CONTRACTOR SHALL COORDINATE WITH WATER SYSTEMS DIVISION (857-8200) THREE WORKING DAYS IN ADVANCE OF ANY WORK THAT MAY AFFECT EXISTING PUBLIC WATER UTILITIES. REFER TO SECTION 18 OF THE GENERAL CONDITIONS.
- CONTRACTOR SHALL PROVIDE AN APPROVED TRAFFIC CONTROL AND BARRICADING PLAN PRIOR TO COMMENCING WORK ON ANY PUBLIC OR PRIVATE STREETS AND DRIVEWAYS. TRAFFIC CONTROL AND BARRICADING IS INCIDENTAL TO THE WORK. THREE (3) WORKING DAYS PRIOR TO BEGINNING CONSTRUCTION THE CONTRACTOR SHALL SUBMIT TO CONSTRUCTION COORDINATION DIVISION A DETAILED CONSTRUCTION SCHEDULE. TWO (2) WORKING DAYS PRIOR TO CONSTRUCTION THE CONTRACTOR SHALL OBTAIN A BARRICADING PERMIT FORM THE CONSTRUCTION COORDINATION DIVISION. CONTRACTOR SHALL NOTIFY BARRICADE ENGINEER (768-2551) PRIOR TO OCCUPYING AN INTERSECTION. REFER TO SECTION 19 OF THE GENERAL CONDITIONS.
- ALL SIGNS, BARRICADES, CHANNELIZATION DEVICES, SIGN FRAMES AND ERECTION OF SUCH DEVICES SHALL CONFORM TO THE REQUIREMENTS OF THE NEW MEXICO MANUAL AND SPECIFICATIONS FOR A UNIFORM SYSTEM OF TRAFFIC CONTROL DEVICES FOR STREETS AND HIGHWAYS; LATEST EDITION. ALL ADVANCE WARNING SIGNS SHALL BE EQUIPPED WITH TYPE A FLASHING WARNING LIGHTS; ALL CHANNELIZING DEVICES SHALL BE EQUIPPED WITH TYPE C STEADY BURN WARNING LIGHTS.
- PRIOR TO CONSTRUCTION, THE CONTRACTOR SHALL VERIFY THE HORIZONTAL AND VERTICAL LOCATIONS OF ALL OBSTRUCTIONS. VERIFY ALL DIMENSIONS AND CONDITIONS SHOWN ON THE DRAWINGS PRIOR TO STARTING WORK. SHOULD A CONFLICT EXIST, THE CONTRACTOR SHALL NOTIFY THE ENGINEER SO THAT THE CONFLICT CAN BE RESOLVED WITH MINIMUM AMOUNT OF DELAY. THE CONTRACTOR SHALL NOT WILLFULLY INSTALL ITEMS AS SHOWN ON THE PLANS WHEN IT IS OBVIOUS IN THE FIELD THAT CONDITIONS EXIST THAT MIGHT NOT HAVE BEEN CONSIDERED IN THE DESIGN. ALL BIDDERS ARE CAUTIONED TO INVESTIGATE SITE CONDITIONS BEFORE SUBMITTING THEIR BIDS.
- ALL UTILITIES SHOWN AND ANY OTHER UTILITIES THAT ARE NOT SHOWN ON THE PLANS BUT ARE WITHIN THE CONSTRUCTION AREA SHALL BE LOCATED, IDENTIFIED AND PROTECTED AT ALL TIMES DURING CONSTRUCTION BY THE CONTRACTOR. IF ANY UTILITY LINES, PIPELINES, OR UNDERGROUND UTILITY LINES ARE SHOWN ON THESE DRAWINGS, THEY ARE SHOWN IN AN APPROXIMATE MANNER ONLY, AND SUCH LINES MAY EXIST WHERE NONE ARE SHOWN. IF ANY SUCH EXISTING LINES ARE SHOWN, THE LOCATION IS BASED UPON INFORMATION PROVIDED BY THE OWNER OF SAID UTILITY, AND THE INFORMATION MAY BE INCOMPLETE, OR MAY BE OBSOLETE BY THE TIME CONSTRUCTION COMMENCES. VERIFY ALL DIMENSIONS AND CONDITIONS SHOWN ON DRAWINGS PRIOR TO STARTING WORK. NOTIFY THE ENGINEER OF ANY DISCREPANCIES OR INCONSISTENCIES. IT SHALL BE THE CONTRACTORS RESPONSIBILITY TO COORDINATE WITH THE UTILITY COMPANIES IN ORDER TO PREVENT SERVICE DISRUPTION.
- THE CONTRACTOR IS RESPONSIBLE FOR ALL NEW UTILITY SYSTEMS SHOWN ON THESE PLANS, COMPLETE AND IN WORKING CONDITION. THE CONTRACTOR SHALL COORDINATE WITH UTILITY COMPANIES AND/OR AUTHORITIES HAVING JURISDICTION AS NECESSARY TO PROVIDE THESE UTILITY SERVICES. ALL COSTS REQUIRED TO PROVIDE THESE UTILITIES SHALL BE BORNE BY THE CONTRACTOR.
- ELECTRONIC MARKER DISCS SHALL BE PLACED IN ACCORDANCE WITH SECTION 170 OF THE CITY OF ALBUQUERQUE, STANDARD SPECIFICATIONS, PUBLIC WORKS CONSTRUCTION.
- CONTRACTOR SHALL RECORD DATA ON ALL UTILITY LINES AND ACCESSORIES AS REQUIRED BY THE CITY OF ALBUQUERQUE FOR THE PREPARATION OF "AS CONSTRUCTED" DRAWINGS. CONTRACTOR SHALL NOT COVER UTILITY LINES AND ACCESSORIES UNTIL ALL DATA HAS BEEN RECORDED.
- WHEN ABUTTING NEW PAVEMENT TO EXISTING, CUT BACK EXISTING PAVEMENT TO A NEAT, STRAIGHT LINE AS REQUIRED TO REMOVE ANY BROKEN OR CRACKED PAVEMENT, AND MATCH NEW PAVING TO EXISTING.
- WHEN CONSTRUCTION UNDER THIS PROJECT CONNECTS TO EXISTING IMPROVEMENTS, THE CONTRACTOR SHALL PROVIDE AN EASY RIDING CONNECTION.
- BACKFILL COMPACTION SHALL BE ACCORDING TO ARTERIAL STREET USE.

REV.	SHEETS	CITY ENGR.	DATE	DATE	DATE
APPROVAL OF REVISIONS					

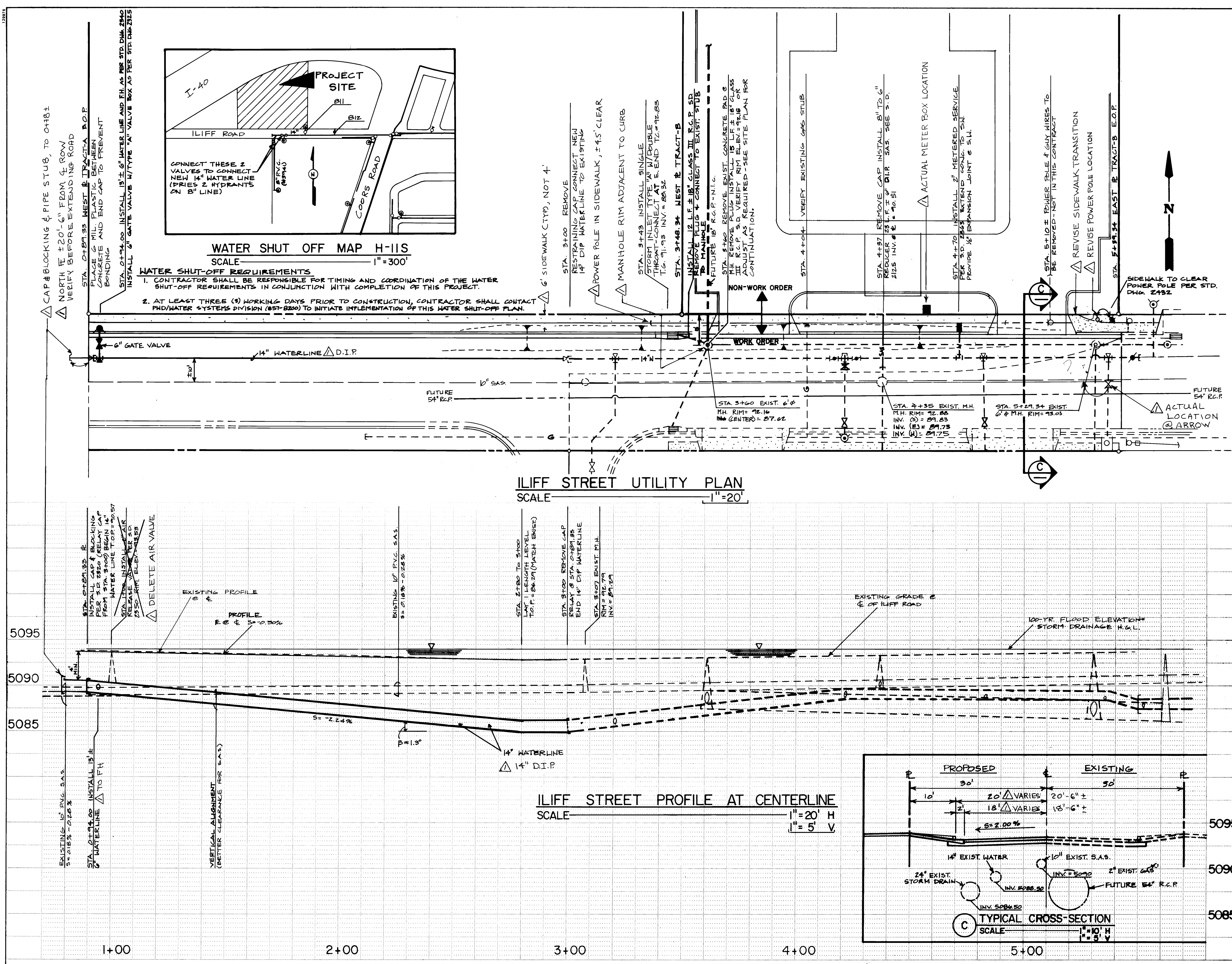
	PREPARED BY: <b>RESOURCE TECHNOLOGY INCORPORATED</b>	APPROVED FOR CONSTRUCTION <i>[Signature]</i> 4/1/92
	PROJECT NO. <b>4396.90</b>	SHEET <b>1</b> OF <b>6</b>







128024



**GENERAL NOTES:**

- FOR INSTALLATION OF NEW UTILITY LINES AT EXISTING PAVEMENT AREAS, SEE CITY OF ALBUQUERQUE STANDARD DRAWING 2485.
- INSTALL CONCRETE BLOCKING IN ACCORDANCE WITH CITY OF ALBUQUERQUE STANDARD DRAWING 2320.
- INSTALL SERVICE LINES TO PROPERTY LINE. PROVIDE TEMPORARY PLUGS AND CAPS AS REQUIRED.

**WATER SHUT OFF MAP H-11S**  
SCALE 1"=300'

1. CONTRACTOR SHALL BE RESPONSIBLE FOR TIMING AND COORDINATION OF THE WATER SHUT-OFF REQUIREMENTS IN CONJUNCTION WITH COMPLETION OF THIS PROJECT.

2. AT LEAST THREE (3) WORKING DAYS PRIOR TO CONSTRUCTION, CONTRACTOR SHALL CONTACT PHD/WATER SYSTEMS DIVISION (857-8200) TO INITIATE IMPLEMENTATION OF THIS WATER SHUT-OFF PLAN.

**LEGEND**

PROPERTY LINE	EXISTING	NEW	FUTURE
BIKEWALK	---	---	---
CURB & GUTTER	---	---	---
DROP INLET	○	○	○
STORM DRAIN MANHOLE	○	○	○
SANITARY SEWER MANHOLE	○	○	○
GATE VALVE	○	○	○
FIRE HYDRANT	○	○	○
WATER LINE	---	---	---
SANITARY SEWER LINE	---	---	---
STORM DRAIN LINE	---	---	---
BUTTERFLY VALVE	---	---	---

**ENGINEER'S SEAL**

DATE 1/17/92  
DRAWN BY G.C. J.W.  
CHECKED BY E.D.

**AS BUILT INFORMATION**

STATION	AS BUILT	MARKS
1+00	11/89	STATION A.C.S. BRASS CAP STAMPED "2-HI" WITHIN A BOX MARKED "M" LOCATED ON THE SOUTH MEDIAN OF THE INTERSECTION, 2.0' EAST FROM THE CORNER OF ILIFF ST. SOUTH FROM E. OF CORRS RD. 107.5' SOUTH FROM E. ON ILIFF RD. N.W. ELEVATION = 5095.653
2+00	11/89	STATION A.C.S. BRASS CAP STAMPED "2-HI" WITHIN A BOX MARKED "M" LOCATED ON THE SOUTH MEDIAN OF THE INTERSECTION, 2.0' EAST FROM THE CORNER OF ILIFF ST. SOUTH FROM E. ON ILIFF RD. N.W. ELEVATION = 5095.653
3+00	11/89	STATION A.C.S. BRASS CAP STAMPED "2-HI" WITHIN A BOX MARKED "M" LOCATED ON THE SOUTH MEDIAN OF THE INTERSECTION, 2.0' EAST FROM THE CORNER OF ILIFF ST. SOUTH FROM E. ON ILIFF RD. N.W. ELEVATION = 5095.653
4+00	11/89	STATION A.C.S. BRASS CAP STAMPED "2-HI" WITHIN A BOX MARKED "M" LOCATED ON THE SOUTH MEDIAN OF THE INTERSECTION, 2.0' EAST FROM THE CORNER OF ILIFF ST. SOUTH FROM E. ON ILIFF RD. N.W. ELEVATION = 5095.653
5+00	11/89	STATION A.C.S. BRASS CAP STAMPED "2-HI" WITHIN A BOX MARKED "M" LOCATED ON THE SOUTH MEDIAN OF THE INTERSECTION, 2.0' EAST FROM THE CORNER OF ILIFF ST. SOUTH FROM E. ON ILIFF RD. N.W. ELEVATION = 5095.653

**REVISIONS**

NO.	DATE	REMARKS
1	1/17/92	DESIGN
2	1/17/92	DESIGN

**CITY OF ALBUQUERQUE  
PUBLIC WORKS DEPARTMENT  
ENGINEERING GROUP**

**TITLE: UTILITIES  
PLAN & PROFILE**

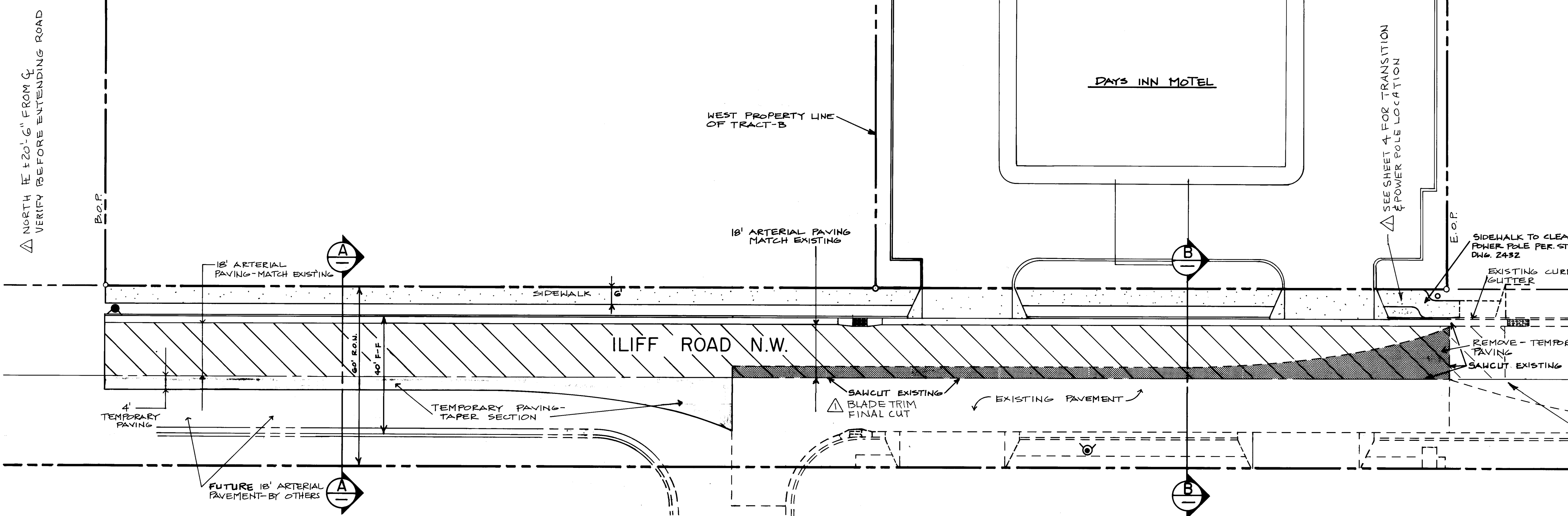
APPROVALS: ENGINEER, DATE, APPROVALS, ENGINEER, DATE

DRC Chair: [Signature] 0-3-92  
Trans. Dev: [Signature] 1-3-92  
Utility Dev: [Signature] 1-15-92  
Hydrology: [Signature] 01-15-92

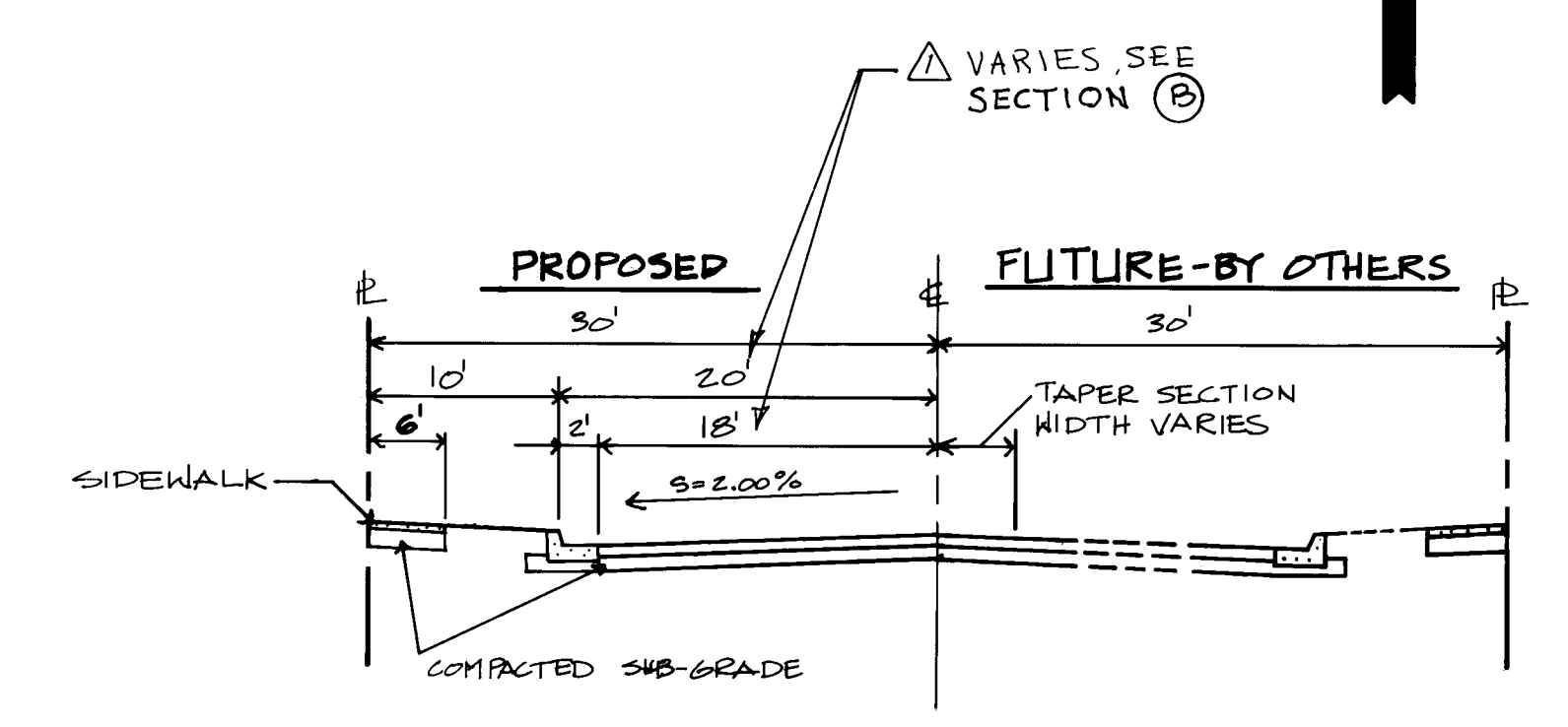
DRAWING NO. 4396.90 MAP NO. H-11 SHEET 4 OF 6

SCANNED BY  
BY LASON

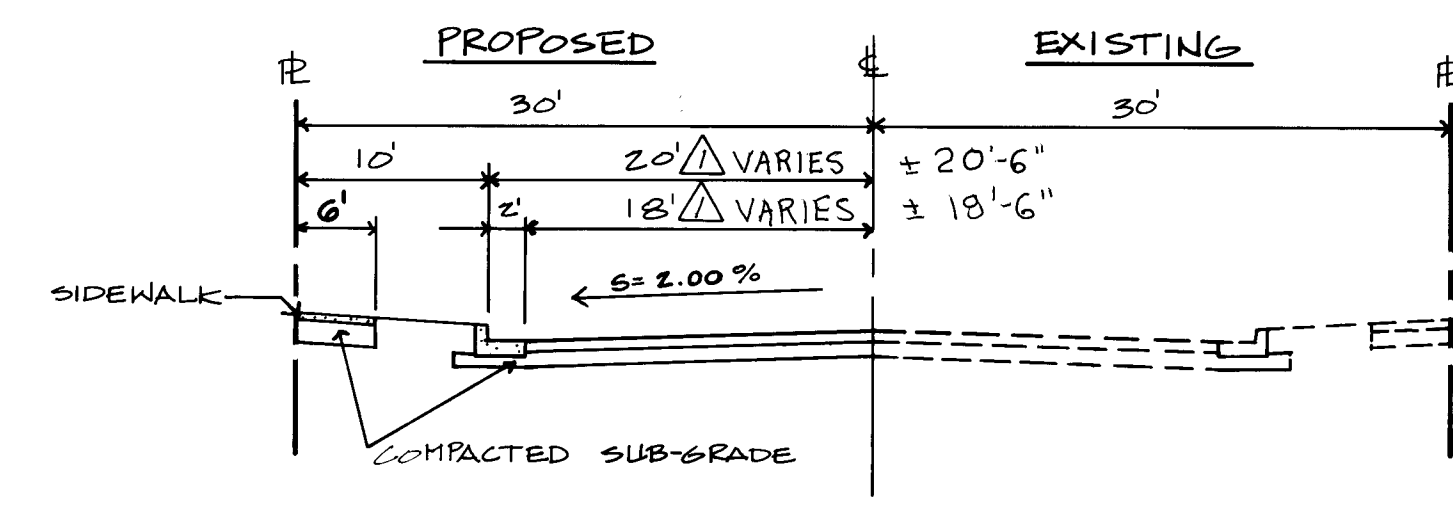




ILIFF ROAD PAVING PLAN  
SCALE 1"=20'



A ILIFF STREET SECTION  
SCALE 1"=10' H  
1"=10' V



B ILIFF STREET SECTION  
SCALE 1"=10' H  
1"=10' V

ARTERIAL STREET PAVEMENT SECTION  
N.T.S.

TEMPORARY STREET PAVEMENT SECTION  
N.T.S.

**GENERAL NOTES:**

1. DISPOSE OF EXCESS DIRT ON PROJECT SITE.

**LEGEND**

EXISTING	NEW	FUTURE
PROPERTY LINE	---	---
SIDEWALK	---	---
CURB & GUTTER	---	---
DROP INLET	---	---
STORM DRAIN MANHOLE	---	---
SANITARY SEWER MANHOLE	---	---
GATE VALVE	---	---
FIRE HYDRANT	---	---
WATER LINE	---	---
SANITARY SEWER LINE	---	---
STORM DRAIN LINE	---	---
TEMPORARY PAVING	---	---
PAVEMENT	---	---

REMOVE EXISTING PAVING (±2" THICK) TO JUST WEST OF EXISTING DROP INLET REPAVE W/ ARTERIAL

NOTE: DURING THE PROJECT CITY CREWS PATCHED NEAR THE DROP INLET & TO THE EAST.

**AS BUILT INFORMATION**

CONTRACTOR	DATE	REVISIONS
STATION A.C.S. BRASS CAP STAMPED	11/88	DESIGN
"12-HI" WITHIN A BOX MARKED "M"		
LOCATED ON THE SOUTH MEDIAN OF THE INTERSECTION, 20' EAST FROM E.O.P. OF COORS RD. & 1075' SOUTH FROM E.O.P. OF ILIFF RD. N.W. ELEVATION=5096.95		
ON ILIFF RD. N.W. ELEVATION=5096.95		
T&E TOP OF FIRE HYDRANT LOCATED ON THE SOUTH EAST CORNER OF PROJECT ELEVATION=5096.95		

**SURVEY INFORMATION**

NO.	BY	DATE
	R.T.I.	11/88

**ENGINEER'S SEAL**

T.G.

BY

REMARKS

REVISIONS

DESIGN

NO. DATE

DESIGNED BY T.G. DATE 1/17/92

DRAWN BY G.C. DATE 1/17/92

CHECKED BY E.D. DATE 1/17/92

26 4396.90 19010592

CITY OF ALBUQUERQUE  
PUBLIC WORKS DEPARTMENT  
ENGINEERING GROUP

TITLE: **OVERALL PAVING  
PLAN & PAVING DETAILS**

APPROVALS	ENGINEER	DATE	APPROVALS	ENGINEER	DATE
DRC CHAIRMAN	R. J. Doe	2-3-92	WATER	M. J. Doe	1-15-92
TRANSPORT.	R. J. Doe	1-15-92	WASTE WATER	M. J. Doe	1-15-92
HYDROLOGY	R. J. Doe	1-15-92			

PROJECT NO. 4396.90 MAP NO. H-11 SHEET 5 OF 6

125891

△ NORTH FLOWLINE ±20'-6" FROM CL  
VERIFY BEFORE EXTENDING ROAD

TABLE 101 (SUPPLEMENTAL) PORTLAND CEMENT CONCRETE DESIGN (1, 2)						
DESIGN LIMITATIONS						
TYPE OF PLACEMENT	USE IN SECTION	MINIMUM DESIGN STRENGTH ENTRAINMENT (psi)	AIR % (3)	CLASS FLYASH (fa)	SLUMP (in.) (4, 5)	MINIMUM MAXIMUM CEMENT WATER (lb/cy) TO RATIO
Paving	337	HR-4000 f'c=4000	4-7	F Required	3 max.	564 0.45
Exterior Structures, Slab on Grade, Sidewalks, Curb & Gutters, Drive Pads and Valley Gutters	340	f'c=4000	4-7	F Required	4 max.	520 0.45
Interior Structures and Slab on Grade	510	f'c=3000	4-7	F Required	4 max.	470 0.50
Channels, Drainage/Hydraulic Structures, Bridge Decks & Parking Structure Decks	510	f'c=4000	4-7	F Required	4 max.	564 0.40
SAS Manholes	520	f'c=4000	4-7	F Required	4 max.	658 (8) 0.40
Miscellaneous	402 702 800 & 1500	f'c=4000	4-7	F Required	4 max.	520 0.45

Notes: 1. Use of ingredients not listed must be authorized by the Engineer and the City of Albuquerque Public Works Department Materials & Testing Laboratory.  
2. Maximum size aggregate shall be in accordance with either the recommendations of ACI 318, type of placement, section and cover requirements, and/or these specifications.  
3. Modulus of Rupture (f<sub>r</sub>) or Compressive Strength (f'<sub>c</sub>) at 28 days.  
4. Flyash shall be Class F complying with the requirements of ASTM C618, including Supplementary Optional Physical Requirements, Reactivity with Cement Alkalies; Reduction of Mortar Bar expansion at 14 days, 70 % (mini) required.  
5. Flyash shall be proportioned 1/4 by weight, flyash (fa) to portland cement (ci).  
6. Slump ranges may be increased as authorized by the ENGINEER when high range water reducers - HRWR (super plasticizers) are used. When a HRWR is proposed, a design mix with the HRWR must be submitted and approved by the ENGINEER. HRWR shall not be used in a mix if the HRWR was not proposed in the design mix.  
7. Minimum total cement, portland cement by weight, per cubic yard of concrete, as determined by ASTM C136, Test Method for Unit Weight, Yield, and Air Content (Gravimetric) of Concrete, adjusted for air entrainment of 5.0 %.  
8. Type V portland cement may be used in place of Type I/IIA cement. If Type V cement is used, the minimum cement content may be reduced to 564 lb/cy.

Chemical Exposure  
Where concrete will be susceptible to chemical exposure, the above design requirements may not provide adequate durability. Specifications for a particular exposure not defined in the above Table should be based on the recommendations of either the ACI 201, "Guide to Durable Concrete" and/or the Portland Cement Association, whichever is more stringent.

CON SPAC SUPPLEMENTAL

STA 3+00 ± BEGIN STD CURB & GUTTER PER C.O.A. STD DWG 2415  
△ SIDEWALK, BEGIN 18' ARTERIAL PAVEMENT SECTION

STA 3+00 ± INSTALL  
CUT-OFF WALL AS  
PER C.O.A. STD DWG.  
2415

CURB & GUTTER

SIDEWALK

18' ARTERIAL PAVING SEE SHEET  
FOR PAVEMENT SECTIONS

S 89° 13' 58" E

STA 2+17  
END 4' WIDE  
TEMPORARY PAVING  
BEGIN TRANSITION  
TEMP PAVING

△ FINAL TRIM W GRADER BLADE

EXISTING ASPHALT

ARTERIAL PAVING SEE SHEET  
FOR PAVEMENT SECTIONS

TEMPORARY  
PAVEMENT-TO BE  
REMOVED

SIDEWALK TO CLEAR  
POWER POLE PER STD DWG 2432

MATCH EXISTING  
ELEVATIONS

SAWCUT EXISTING

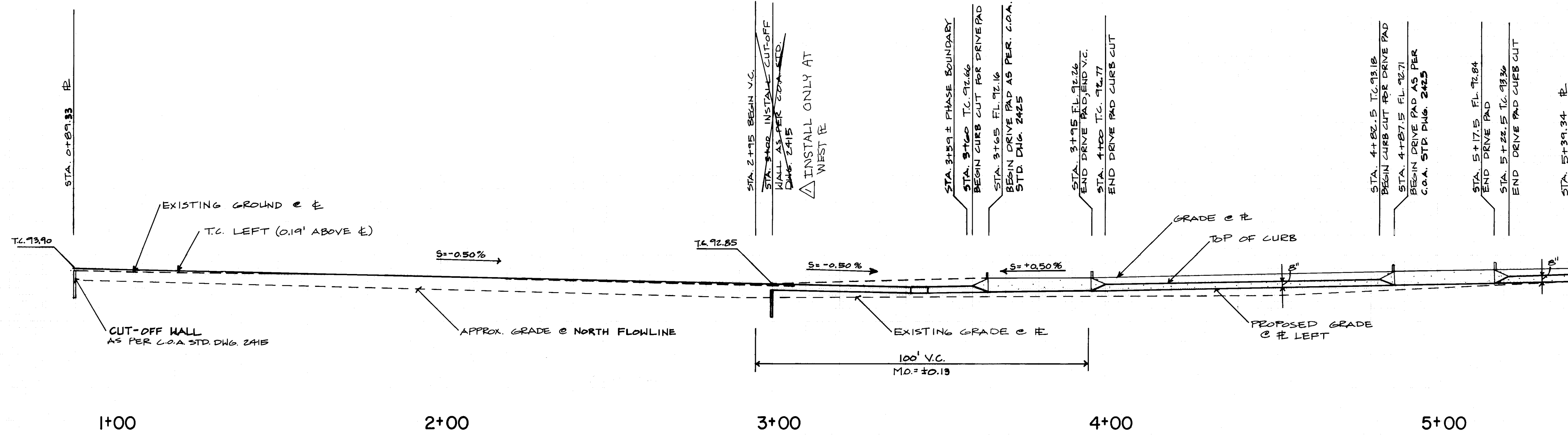
△ ACTUAL SAWCUT TO THIS LINE

△ SEE SHEET 4 FOR LOCATION  
OF VALVES, MANHOLES, POWER  
POLES, ETC.

# LEGEND

PROPERTY LINE	EXISTING	NEW	FUTURE
SIDEWALK	---	---	---
CURB & GUTTER	---	---	---
DROP INLET	---	---	---
STORM DRAIN MANHOLE	---	---	---
SANITARY SEWER MANHOLE	---	---	---
GATE VALVE	---	---	---
FIRE HYDRANT	---	---	---
WATER LINE	---	---	---
SANITARY SEWER LINE	---	---	---
STORM DRAIN LINE	---	---	---

## ILIFF ROAD PAVING SCALE 1"=20'



## PROFILE AT NORTH FLOWLINE SCALE 1"=20' H 1"=5' V

SOUTH FLOWLINE SIMILAR EXCEPT AT SIDE ROAD AND CURB CUT

26 4396.90 900692

CITY OF ALBUQUERQUE PUBLIC WORKS DEPARTMENT ENGINEERING GROUP			
TITLE: ILIFF ROAD PAVING PLAN & PROFILE			
APPROVALS	ENGINEER	DATE	APPROVALS
DRC Chair	R. J. [Signature]	2-3-92	
Trans. Dev	R. J. [Signature]	1-31-92	
Utility Dev	R. J. [Signature]	1-15-92	
HYDROLOGY	Robert [Signature]	01-15-92	
DRAWING NO.	4396.90	MAP NO.	H-11
SHEET 6		OF 6	

SCANNED BY  
BY L. J. [Signature]