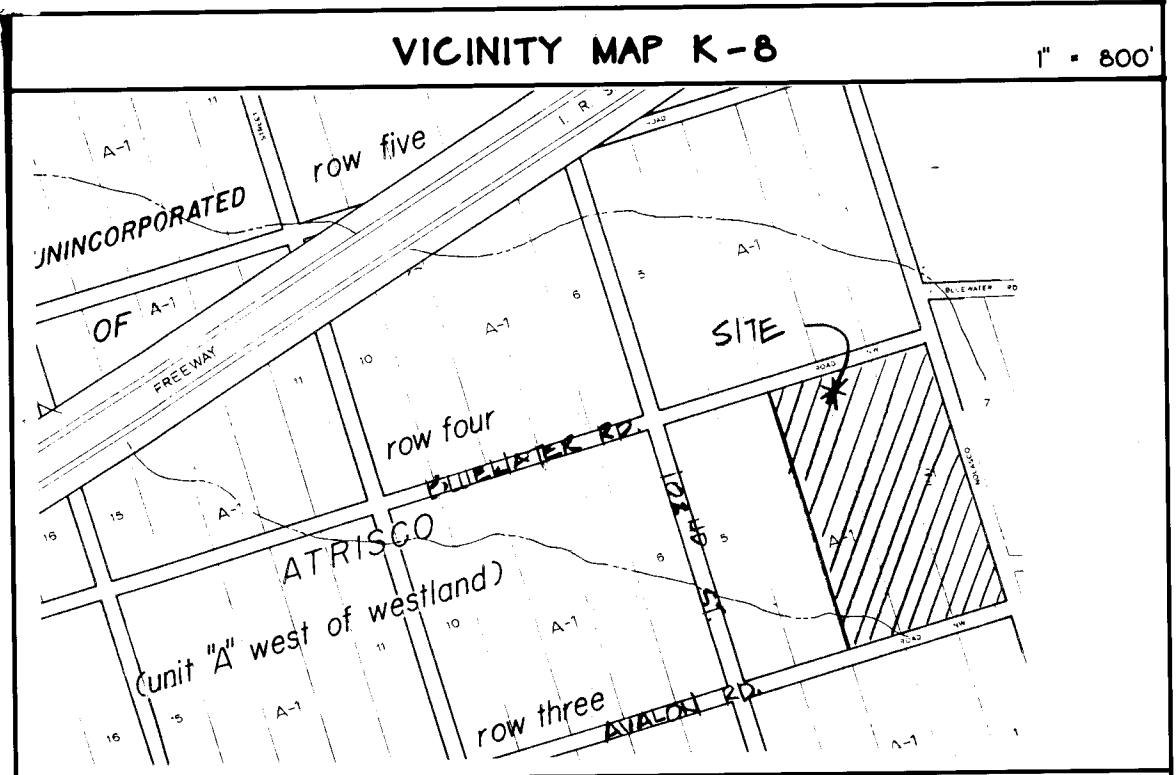


# Flying J Travel Plaza

## INDEX OF DRAWINGS

1. 98TH STREET NW WATER & SEWER PLAN / PROFILE (SECTION 1)
2. 98TH STREET NW WATER & SEWER PLAN / PROFILE (SECTION 2)
3. AVALON ROAD NW WATER SEWER PLAN / PROFILE
4. BLUEWATER ROAD NW SEWER ACCESS PLAN / PROFILE



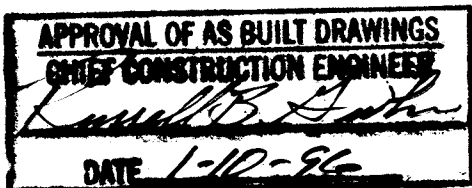
### NOTICE TO CONTRACTOR

1. ALL WORK DETAILED ON THESE PLANS TO BE PERFORMED UNDER CONTRACT SHALL, EXCEPT AS OTHERWISE STATED OR PROVIDED FOR HEREON, BE CONSTRUCTED IN ACCORDANCE WITH THE CITY OF ALBUQUERQUE STANDARD SPECIFICATIONS FOR PUBLIC WORKS CONSTRUCTION - 1986 EDITION (UPDATE #4).
2. TWO (2) WORKING DAYS PRIOR TO ANY EXCAVATION, THE CONTRACTOR MUST CONTACT NEW MEXICO ONE CALL SYSTEM, 260-1440, FOR LOCATION OF EXISTING UTILITIES.
3. PRIOR TO CONSTRUCTION, THE CONTRACTOR SHALL EXCAVATE AND VERIFY THE HORIZONTAL AND VERTICAL LOCATIONS OF ALL OBSTRUCTIONS. SHOULD A CONFLICT EXIST, THE CONTRACTOR SHALL NOTIFY THE ENGINEER OR SURVEYOR IMMEDIATELY SO THAT THE CONFLICT CAN BE RESOLVED WITH A MINIMUM AMOUNT OF DELAY.
4. THREE (3) WORKING DAYS PRIOR TO BEGINNING CONSTRUCTION, THE CONTRACTOR SHALL SUBMIT TO CONSTRUCTION COORDINATIONS DIVISION A DETAILED CONSTRUCTION SCHEDULE. TWO (2) WORKING DAYS PRIOR TO CONSTRUCTION, THE CONTRACTOR SHALL OBTAIN A BARRICADING PERMIT FROM THE CONST. COORDINATION DIVISION. CONTRACTOR SHALL NOTIFY BARRICADE ENGINEER (768-2551) PRIOR TO OCCUPYING AN INTERSECTION. REFER TO SECTION 19 OF THE GENERAL CONDITIONS OF THE STANDARD SPECIFICATIONS.
5. ALL STREET STRIPING ALTERED OR DESTROYED SHALL BE REPLACED IN KIND BY CONTRACTOR TO LOCATION AND IN KIND AS EXISTING OR AS INDICATED BY THIS PLAN SET.
6. CONTRACTOR SHALL NOTIFY THE ENGINEER NOT LESS THAN SEVEN (7) DAYS PRIOR TO STARTING WORK IN ORDER THAT THE ENGINEER MAY TAKE NECESSARY MEASURES TO INSURE THE PRESERVATION OF SURVEY MONUMENTS. CONTRACTOR SHALL NOT DISTURB PERMANENT SURVEY MONUMENTS WITHOUT THE CONSENT OF THE ENGINEER AND SHALL NOTIFY THE ENGINEER AND BEAR THE EXPENSE OF REPLACING ANY THAT MAY BE DISTURBED WITHOUT PERMISSION. REPLACEMENT SHALL BE DONE ONLY BY THE CITY SURVEYOR. WHEN A CHANGE IS MADE IN THE FINISHED ELEVATION OF THE PAVEMENT OF ANY ROADWAY IN WHICH A PERMANENT SURVEY MONUMENT IS LOCATED, CONTRACTOR SHALL, AT HIS OWN EXPENSE, ADJUST THE MONUMENT COVER TO THE NEW GRADE UNLESS OTHERWISE SPECIFIED. REFER TO SECTION 4 OF THE GENERAL CONDITIONS OF THE STANDARD SPECIFICATIONS.

### THE FOLLOWING NOTES ALSO APPLY WHEN CHECKED

- ☒ ALL UTILITIES AND UTILITY LINES SHALL BE INSTALLED PRIOR TO PAVING.
- ☒ BACKFILL COMPACTION SHALL BE ACCORDING TO SPECIFIED STREET USE. TOP 20" SHALL BE COMPACTED TO 95%.
- ☐ TACK COAT REQUIREMENTS SHALL BE DETERMINED BY THE CITY ENGINEER.
- ☒ SIDEWALKS AND WHEELCHAIR RAMPS WITHIN THE CURB RETURNS SHALL BE CONSTRUCTED WHEREVER A NEW CURB RETURN IS CONSTRUCTED.
- ☐ IF CURB IS DEPRESSIONED FOR A DRIVEPAD, THE DRIVEPAD SHALL BE CONSTRUCTED PRIOR TO ACCEPTANCE OF THE CURB AND GUTTER.
- ☒ ALL STORM DRAINAGE FACILITIES SHALL BE COMPLETED PRIOR TO FINAL ACCEPTANCE.

SCANNED BY  
RY LASON



1 2 3 4 5 6 7 8 9 10 11 12 13 14 15  
20-41500-190 0090

City Utilities approved for construction within County right-of-way by Bernalillo County Public Works Dept.

Name *[Signature]* 3/13/95  
Date

RECORD DRAWING  
The as-built information shown was provided by SURV-TEK INC. and was transcribed by C.L. Weiss Engineering, Inc.



C.L. WEISS ENGINEERING, INC.  
PORT OFFICE BOX 87 - SANDIA PARK, N.M. 87051  
1800 ALVARADO DR. N.E. - ALBUQUERQUE, N.M. 87106 - (505) 266-3644

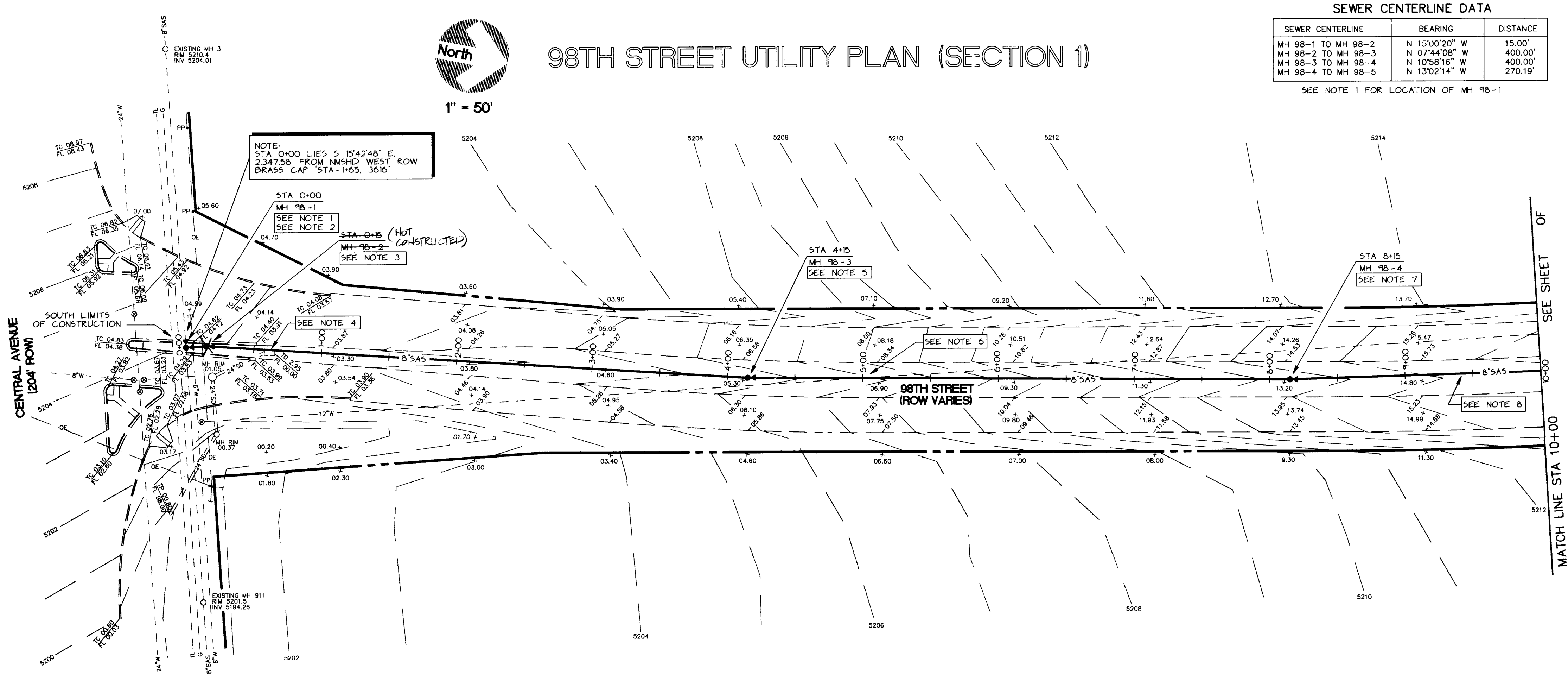
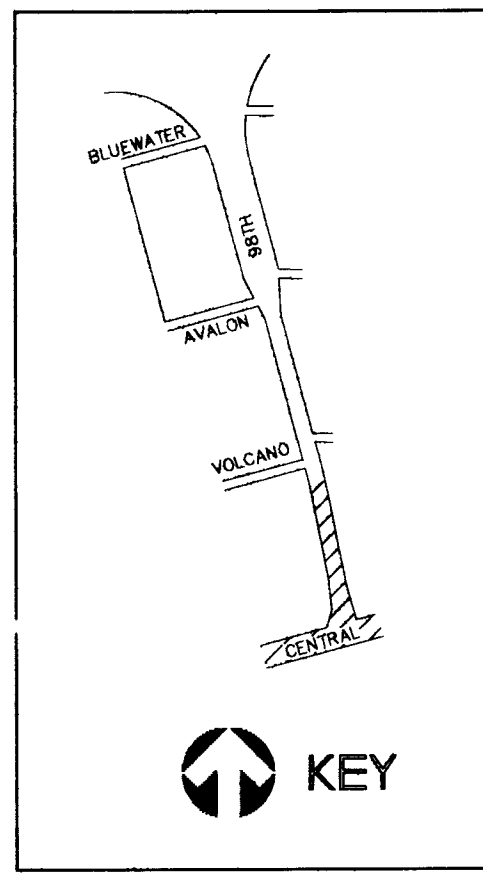
PROJECT NO.

4506.90

APPROVED FOR CONSTRUCTION

*[Signature]*  
4/13/95

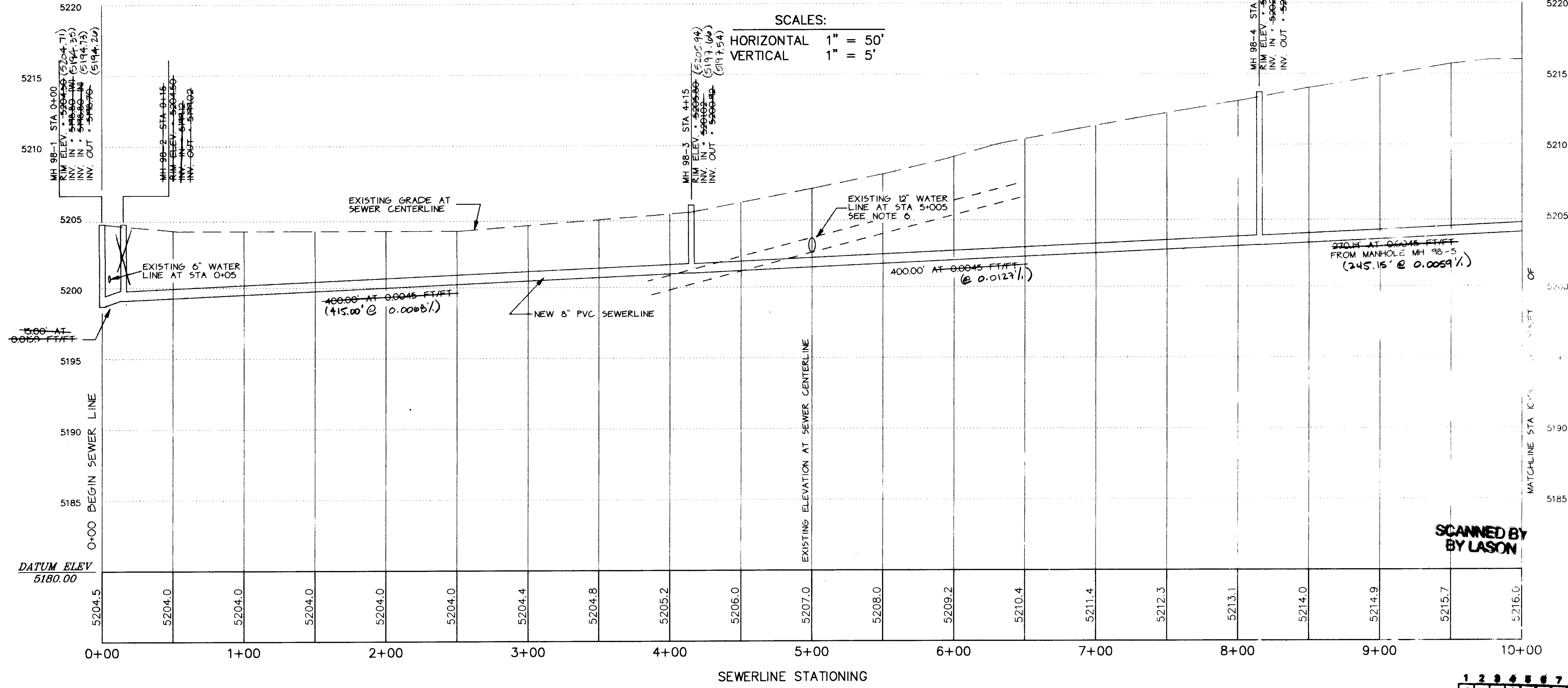
SHEET OF



SEWER CENTERLINE DATA		
SEWER CENTERLINE	BEARING	DISTANCE
MH 98-1 TO MH 98-2	N 15°00'20" W	15.00'
MH 98-2 TO MH 98-3	N 07°44'08" W	400.00'
MH 98-3 TO MH 98-4	N 10°58'15" W	400.00'
MH 98-4 TO MH 98-5	N 13°02'14" W	270.19'

SEE NOTE 1 FOR LOCATION OF MH 98-1

98TH STREET UTILITY PROFILE (SECTION 1)

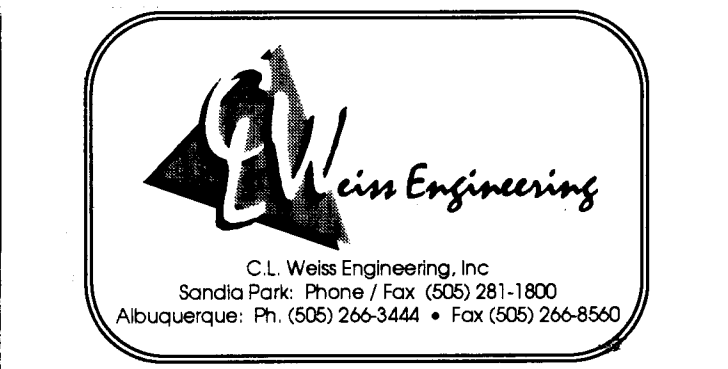


- GENERAL NOTES**
- STA 0+00 LOCATED 5' 15' 42" 48" E, 2.347' 58" FROM NM5HD WEST ROW BRASS CAP STAMPED STA - H65, 3616
  - INSTALL TYPE 'E' MANHOLE. REMOVE AND REPLACE EXISTING ARTERIAL ASPHALT PAVING AND MEDIAN CURB/GUTTER AND MEDIAN PAVING AS REQUIRED. AVOID EXISTING BURIED TELEPHONE, GAS AND WATER LINES IN VICINITY. SEE C.O.A. STD. DWGS. 2002, 210, 245 AND 2465.
  - INSTALL TYPE 'E' MANHOLE. REMOVE AND REPLACE EXISTING ARTERIAL ASPHALT PAVING AND MEDIAN CURB/GUTTER AND MEDIAN PAVING AS REQUIRED. SEE C.O.A. STD. DWGS. 2002, 210, 245 AND 2465.
  - RELOCATE EXISTING STORM SEWER DROP INLET LOCATED AT APPROXIMATELY STA 0+60 WHEN INSTALLING NEW 8" 5AS LINE.
  - INSTALL TYPE 'C' MANHOLE. REMOVE AND REPLACE EXISTING ARTERIAL ASPHALT PAVING AS REQUIRED. SEE C.O.A. STD. DWGS. 2002, 210 AND 2465.
  - EXISTING UNDERGROUND 12" WATER LINE LOCATED AT APPROXIMATELY STA 5+00. RE-ROUTE WATER LINE ABOVE 5AS LINE IF NECESSARY.
  - INSTALL TYPE 'E' MANHOLE. REMOVE AND REPLACE EXISTING ARTERIAL ASPHALT PAVING AS REQUIRED. SEE C.O.A. STD. DWGS. 2002, 210 AND 2465.
  - INSTALL 8" 5AS LINE CONNECTING MANHOLES MH 98-1 THROUGH MH 98-5 LOCATED IN 98TH STREET MEDIAN. TRENCH AND BED PIPE SIMILAR TO C.O.A. STD. DWG. 235.
- TRAFFIC HANDLING NOTES**
- CONTRACTOR MUST SUBMIT A CONSTRUCTION SIGNING AND BARRICADING PLAN TO BERNALILLO COUNTY TRAFFIC CONTROL ENGINEER AND RECEIVE A BARRICADING PERMIT PRIOR TO CONSTRUCTION.
  - ALL CONSTRUCTION SIGNING AND BARRICADING SHALL COMPLY WITH MANUAL ON UNIFORM TRAFFIC CONTROL DEVICES, 1989 EDITION, REVISION 3, SEPTEMBER 1993.
  - CONTRACTOR'S OPERATION, BARRICADING AND SIGNING SHALL NOT AFFECT THROUGH LANES BETWEEN 7 AM AND 9 AM, OR 4 PM AND 6 PM ON 98TH STREET OR CENTRAL AVENUE NW.
  - SEE ALSO RELATED PROJECT DRAWINGS: 98TH STREET IMPROVEMENTS PLAN/PROFILE, AVALON ROAD NW STREET + STORM DRAIN PLAN/PROFILE, BERNALILLO COUNTY PUBLIC WORKS DEPT. AND 98TH STREET IMPROVEMENTS TRAFFIC CONTROL PLAN (NM5HD).
  - CONTRACTOR TO COORDINATE ALL 98TH ST UTILITY WORK WITH 98TH ST LANE CLOSURES UNDER TRAFFIC CONTROL PLAN. CONTRACTOR TO PROVIDE OPEN TRENCH PROTECTION PER OSHA AND C.O.A. / BERNALILLO COUNTY GUIDELINES.

SURVEY INFORMATION		BENCH MARKS		AS-BUILT INFORMATION	
NO.	DATE	BY	DATE	CONTRACTOR	DATE
				POG, Inc./TCC Co.	DATE 12-95

RECORD DRAWING  
The as-built information shown was provided by SURV-TEK, INC. and was transcribed by C.L. Wells Engineering, Inc.

City Utilities approved for construction within County right-of-way by Bernalillo County Public Works Dept.  
Name: *Tom J. ...* Date: 3/15/95



CITY OF ALBUQUERQUE  
PUBLIC WORKS DEPARTMENT  
ENGINEERING GROUP

TITLE: 98TH STREET NW  
WATER & SEWER PLAN / PROFILE (SECTION 1)

APPROVALS	ENGINEER	DATE	APPROVALS	ENGINEER	DATE
DRG CHAIRMAN	<i>B. J. ...</i>	3-30-95	WATER	<i>R. W. Kano</i>	11-23-94
ANSPORATION	<i>N/A RWD</i>	11-23-94	WASTE WATER	<i>R. W. Kano</i>	11-23-94
HYDROLOGY	<i>N/A SMC</i>	3-16-95			

PROJECT NO. 4506.90 MAP NO. K 8 SHEET 1 OF 4



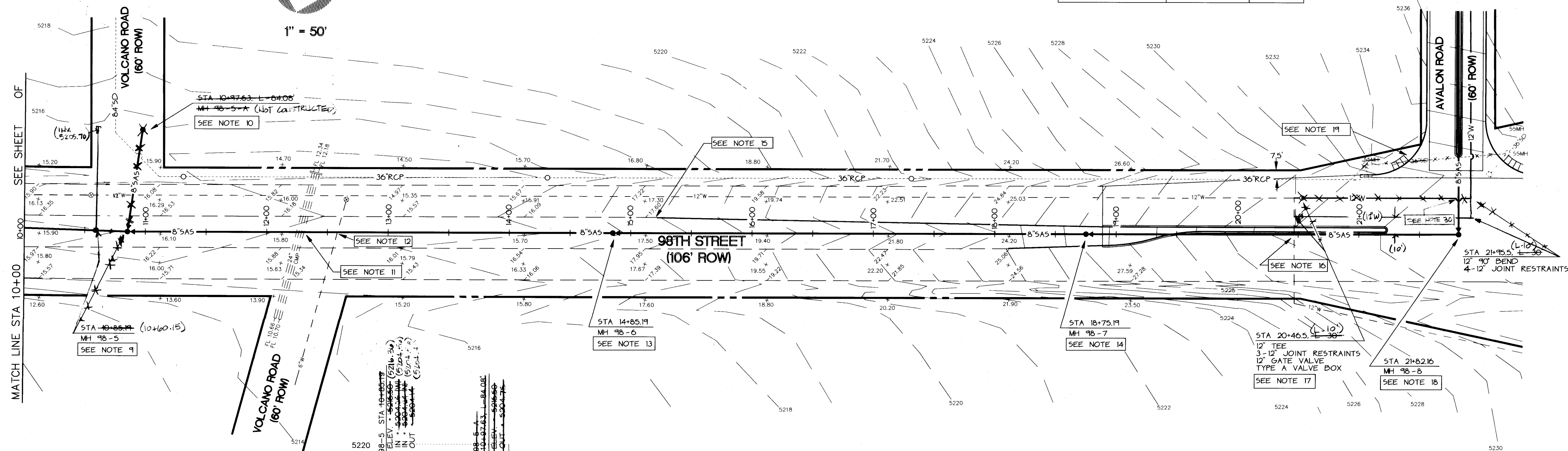


# 98TH STREET UTILITY PLAN (SECTION 2)

1" = 50'

SEWER CENTERLINE DATA		
SEWER CENTERLINE	BEARING	DISTANCE
MH 98-4 TO MH 98-5	N 13°02'14" W	270.19'
MH 98-5 TO MH 98-6	N 14°37'43" W	400.00'
MH 98-6 TO MH 98-7	N 14°37'43" W	390.00'
MH 98-7 TO MH 98-8	N 14°34'10" W	306.97'

FOR AVALON ROAD  
SEWER PLAN/PROFILE



## GENERAL NOTES

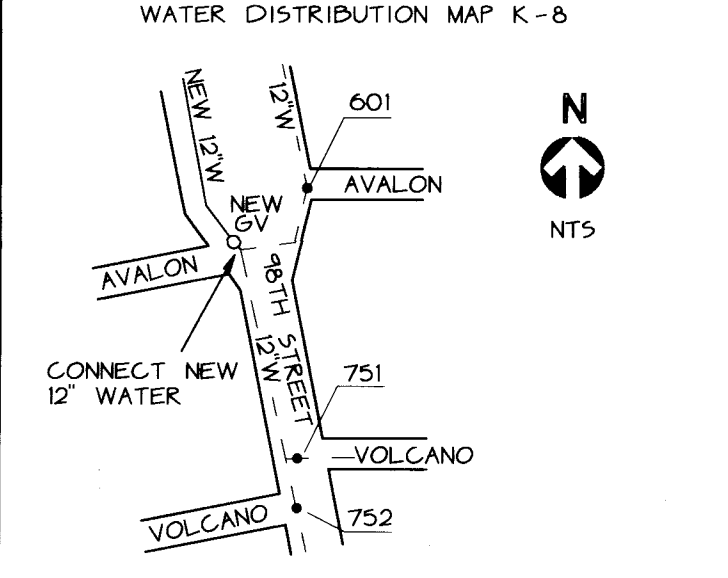
1. INSTALL TYPE 'E' MANHOLE. REMOVE AND REPLACE EXISTING ARTERIAL ASPHALT PAVING AS REQUIRED. SEE C.O.A. STD. DWGS. 2102, 210 AND 2465.
2. EXISTING 24" CMP CULVERTS LOCATED AT APPROXIMATELY STA 12+28.
3. EXISTING UNDERGROUND 6" WATER LINE LOCATED AT APPROXIMATELY STA 12+58.
4. INSTALL TYPE 'E' MANHOLE. REMOVE AND REPLACE EXISTING ARTERIAL ASPHALT PAVING AS REQUIRED. SEE C.O.A. STD. DWGS. 2102, 210, 216 AND 2465.
5. NEW 98TH STREET PAVING IMPROVEMENTS BEGIN AT STA 15+21. ALL SAS CONSTRUCTION IS TO BE COMPLETED PRIOR TO PAVING IMPROVEMENTS. SEE ALSO RELATED PROJECT DRAWINGS "98TH STREET IMPROVEMENTS PLAN/PROFILE AND AVALON ROAD PLAN/PROFILE" (BERNALILLO COUNTY PUBLIC WORKS DEPT.) FOR ADDITIONAL INFORMATION.
6. EXISTING UNDERGROUND 6" WATER LINE LOCATED AT APPROXIMATELY STA 20+47.
7. DRY-CONNECT NEW 12" WATER LINE TO EXISTING 12" LINE. NEW WATER LINES TO BE INSTALLED PRIOR TO NEW STREET CONSTRUCTION. 2328 AND 2333. SEE ALSO WATER SHUTOFF PLAN, THIS SHEET.
8. INSTALL TYPE 'E' MANHOLE. SEE C.O.A. STD. DWGS. 2102, 210 AND 2465.
9. REFER TO PROJECT STORM SEWER PLANS FOR INFORMATION ON SYSTEM.



## TRAFFIC HANDLING NOTES

1. CONTRACTOR MUST SUBMIT A CONSTRUCTION SIGNING AND BARRICADING PLAN TO BERNALILLO COUNTY TRAFFIC CONTROL ENGINEER AND RECEIVE A BARRICADING PERMIT PRIOR TO CONSTRUCTION.
2. ALL CONSTRUCTION SIGNING AND BARRICADING SHALL COMPLY WITH MANUAL ON UNIFORM TRAFFIC CONTROL DEVICES, 1989 EDITION, REVISION 3, SEPTEMBER 1993.
3. CONTRACTOR'S OPERATION BARRICADING AND SIGNING SHALL NOT AFFECT THROUGH LANE BETWEEN 7 AM AND 9 AM OR 4 PM AND 6 PM ON 98TH STREET OR CENTRAL AVENUE NW.
4. SEE ALSO RELATED PROJECT DRAWINGS "98TH STREET IMPROVEMENTS PLAN/PROFILE, AVALON ROAD NW STREET - STORM DRAIN PLAN/PROFILE" (BERNALILLO COUNTY PUBLIC WORKS DEPT.) AND "98TH STREET IMPROVEMENTS TRAFFIC CONTROL PLAN" (MSHD).

## WATER VALVE SHUT-OFF PLAN



1. CONTRACTOR IS RESPONSIBLE FOR COORDINATING SHUT-OFF PLAN WITH C.O.A. WATER SYSTEMS DIVISION (857-5200) AT LEAST 3 WORKING DAYS PRIOR TO ANY WORK DONE ON PUBLIC WATER LINES. ONLY WATER SYSTEMS DIVISION WILL PERFORM THE SHUT-OFF PLAN.
2. SHUT OFF VALVES 601, 751 AND 752 PRIOR TO MAKING NEW 12" NON-PRESSURIZED CONNECTION.

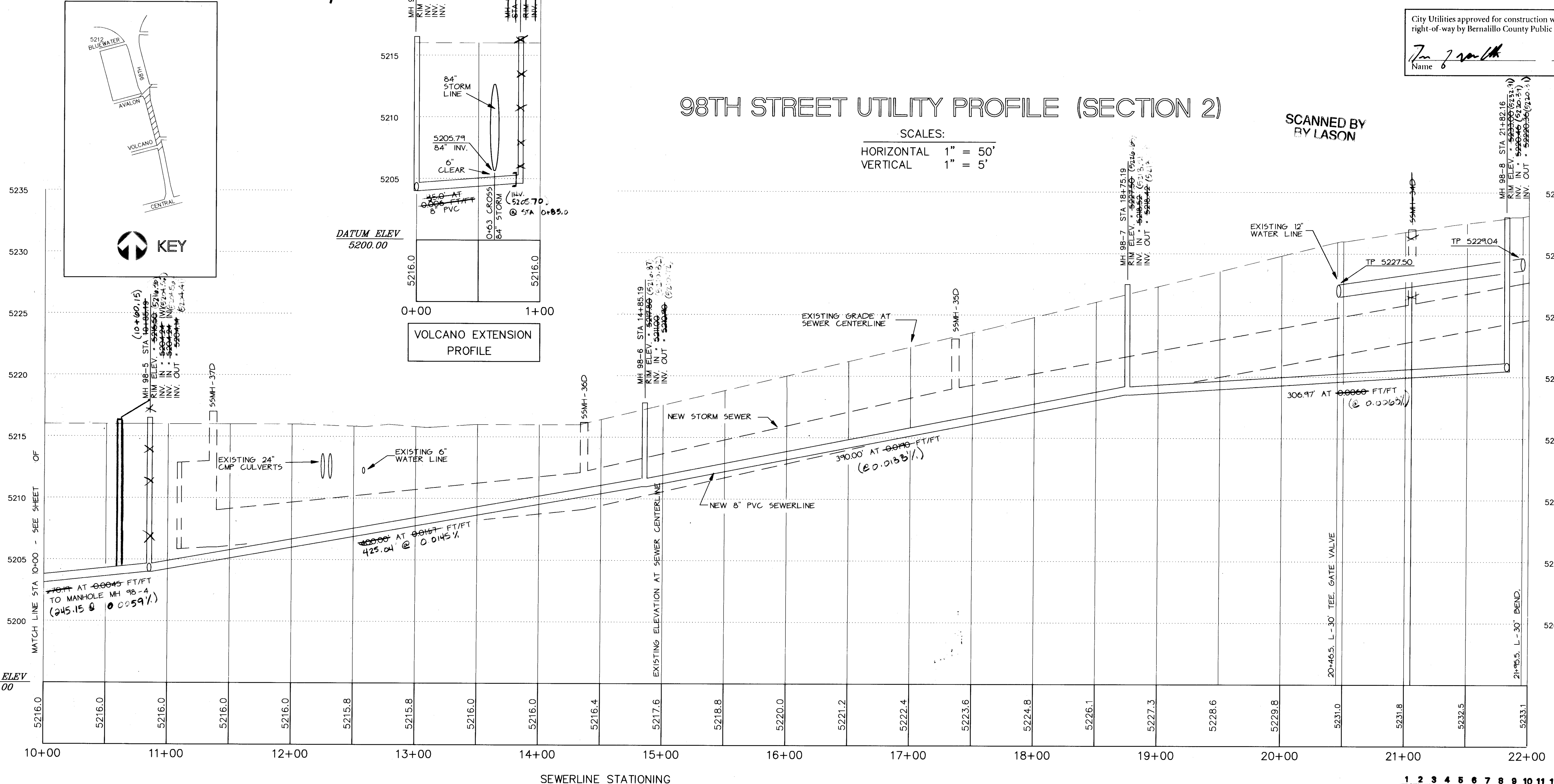
CITY OF ALBUQUERQUE  
PUBLIC WORKS DEPARTMENT  
ENGINEERING GROUP

TITLE: 98TH STREET NW WATER & SEWER PLAN / PROFILE (SECTION 2)				
APPROVALS	ENGINEER	DATE	APPROVALS	ENGINEER
DRG CHAIRMAN	<i>[Signature]</i>	3-30-95	WATER	R.W. Kame
TRANSPORTATION	N/A	11-29-94	WASTE WATER	R.W. Kame
HYDROLOGY	N/A	3-16-95		
PROJECT NO.	4506.90	MAP NO.	K 8	SHEET 2 OF 4

## 98TH STREET UTILITY PROFILE (SECTION 2)

SCALES:  
HORIZONTAL 1" = 50'  
VERTICAL 1" = 5'

SCANNED BY  
BY LASON



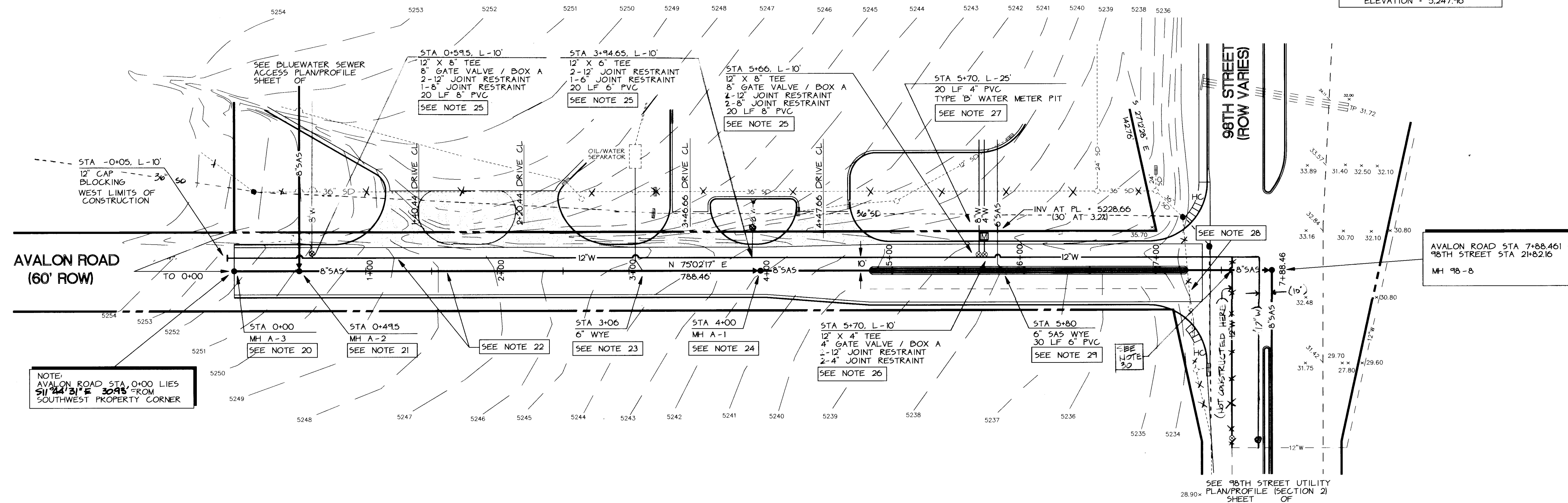
RECORD DRAWING  
The as-built information shown was  
provided by SURF-TEK, INC. and  
was transcribed by C.L. Weiss Engineering, Inc.

UT-38-2 10/24/94 09:15

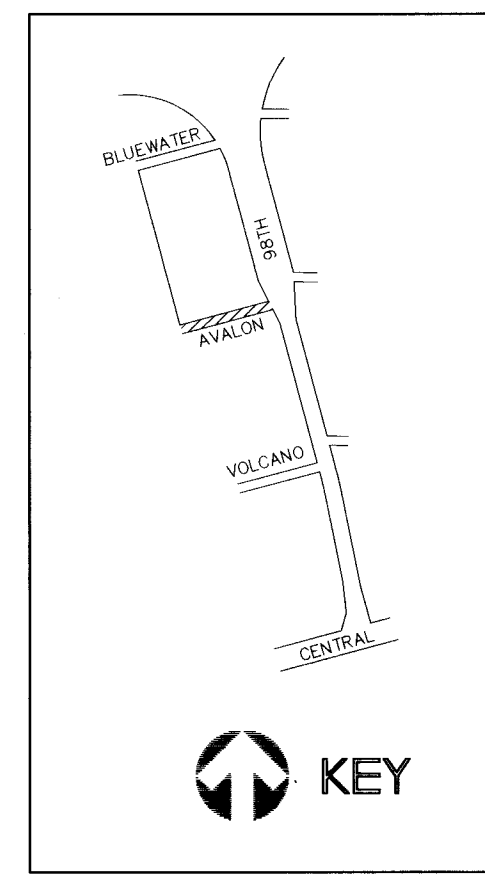


## AVALON ROAD UTILITY PLAN

PROJECT TEMPORARY BENCHMARK  
TOP OF NM5HD BRASS CAP  
STA 5+85.00 WITH TAG 3616  
LOCATED ON 98TH STREET  
WEST ROW LINE  
ELEVATION = 5,247.96

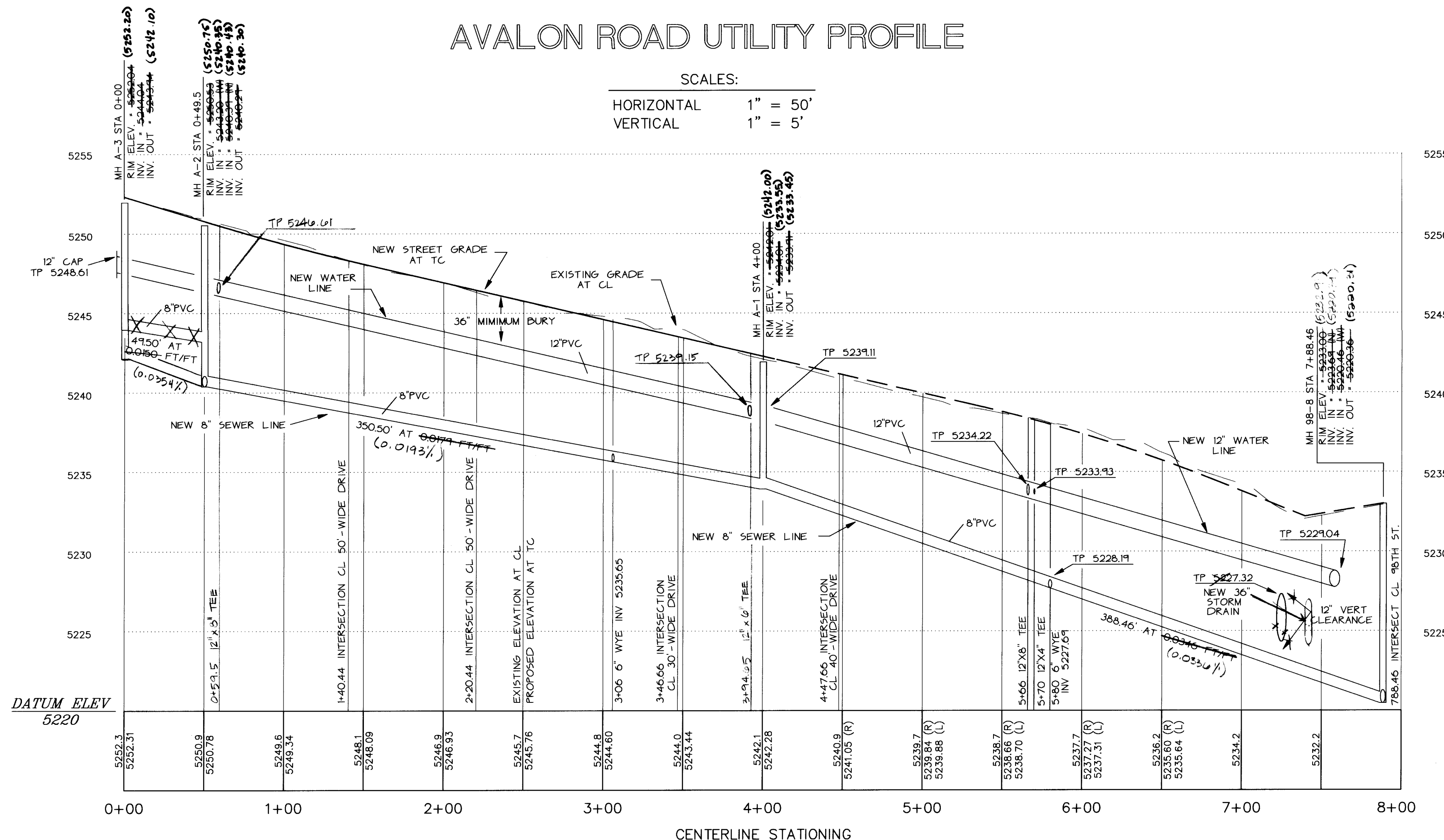


NOTE:  
AVALON ROAD STA. 0+00 LIES  
91' 44' 51" E 30' 15" FROM  
SOUTHWEST PROPERTY CORNER



## AVALON ROAD UTILITY PROFILE

SCALES:  
HORIZONTAL 1" = 50'  
VERTICAL 1" = 5'



### GENERAL NOTES

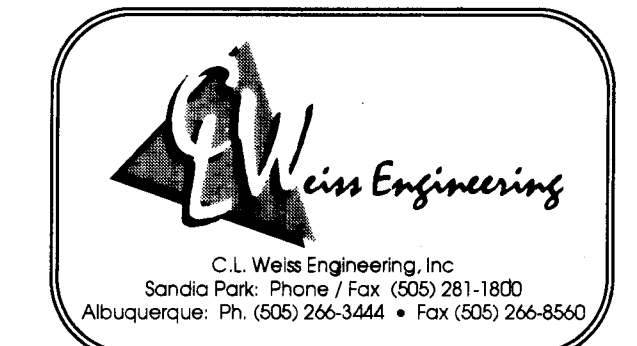
- INSTALL TYPE 'E' MANHOLE. SEE C.O.A. STD. DWG'S 2102 AND 2110.
- INSTALL TYPE 'E' DROP MANHOLE. SEE C.O.A. STD. DWG'S 2102, 2110 AND 2116.
- INSTALL 8" SAS LINE CONNECTING MANHOLES MH A-3 THROUGH MH 98-B LOCATED AT 98TH STREET MEDIAN. INSTALL 12" WATER LINE 10' NORTH OF SAS LINE. ALL SAS AND WATER LINE CONSTRUCTION IS TO BE COMPLETED PRIOR TO PAVING IMPROVEMENTS. SEE ALSO RELATED PROJECT DRAWINGS 98TH STREET IMPROVEMENTS PLAN/PROFILE AND AVALON ROAD PLAN/PROFILE (BERNALILLO COUNTY PUBLIC WORKS DEPT.) FOR ADDITIONAL INFORMATION. SEE C.O.A. STD. DWG. 2315.
- INSTALL 6" SERVICE WYE CONNECTION TO NEW 8" SAS LINE. INSTALL 80% OF 6" SERVICE LATERAL TO OIL/WATER SEPARATOR. SEE C.O.A. STD. DWG. 2125.
- INSTALL TYPE 'E' MANHOLE. SEE C.O.A. STD. DWG'S 2102 AND 2110.
- INSTALL NEW 6" OR 8" UNMETERED FIRE LINE AS SHOWN. EXTEND 6" OR 8" PVC LINE TO PROPERTY LINE AND CAP.
- INSTALL NEW 4" METERED SERVICE LINE AS SHOWN. EXTEND 4" PVC LINE TO NEW CONCRETE METER PIT AT PROPERTY LINE.
- CONSTRUCT TYPE 'B' CONCRETE WATER METER PIT FOR NEW 4" SERVICE LINE. LOCATE PIT AS SHOWN OUTSIDE PROPERTY LINE. SEE C.O.A. STD. DWG. 2370.
- REFER TO PROJECT STORM SEWER PLANS FOR INFORMATION ON SYSTEM.
- INSTALL 6" SERVICE WYE CONNECTION TO NEW 8" SAS LINE. INSTALL 30% OF 6" SERVICE LATERAL TO PROPERTY LINE AND PLUG AT INVERT SHOWN. SEE C.O.A. STD. DWG. 2125.
- SEE C.O.A. STD. DWG. 2140 - ENCASUREMENT DETAILS - FOR SANITARY SEWER AND WATER CROSSING.

### TRAFFIC HANDLING NOTES

- CONTRACTOR MUST SUBMIT A CONSTRUCTION SIGNING AND BARRICADING PLAN TO BERNALILLO COUNTY TRAFFIC CONTROL ENGINEER AND RECEIVE A BARRICADING PERMIT PRIOR TO CONSTRUCTION.
- ALL CONSTRUCTION SIGNING AND BARRICADING SHALL COMPLY WITH MANUAL ON UNIFORM TRAFFIC CONTROL DEVICES, 1989 EDITION, REVISION 3, SEPTEMBER 1993.
- CONTRACTOR'S OPERATION, BARRICADING AND SIGNING SHALL NOT AFFECT THROUGH LANES BETWEEN 7 AM AND 9 AM, OR 4 PM AND 6 PM ON 98TH STREET OR AVALON ROAD NW.
- SEE ALSO RELATED PROJECT DRAWINGS 98TH STREET IMPROVEMENTS PLAN/PROFILE, AVALON ROAD NW STREET + STORM DRAIN PLAN/PROFILE (BERNALILLO COUNTY PUBLIC WORKS DEPT.) AND 98TH STREET IMPROVEMENTS TRAFFIC CONTROL PLAN (NM5HD).

RECORD DRAWING  
The as-built information shown was  
provided by SURP-TEK, INC. and  
was transcribed by C.L. Weiss Engineering, Inc.

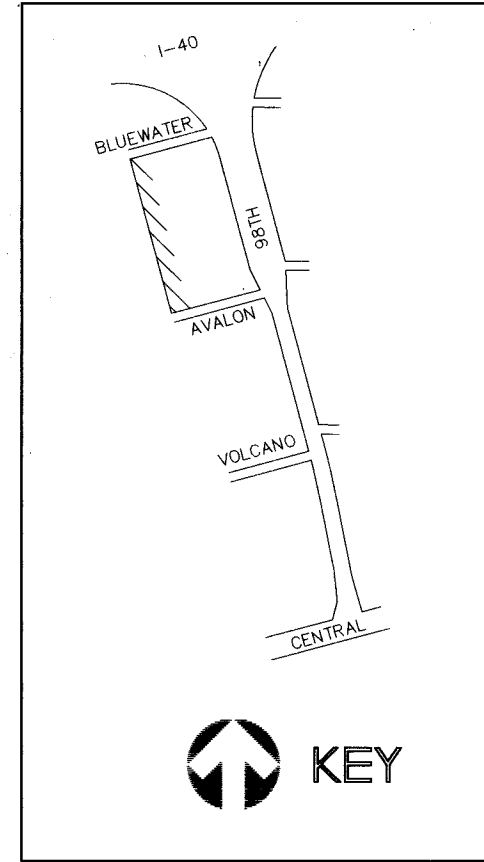
City Utilities approved for construction within County  
right-of-way by Bernalillo County Public Works Dept.  
Name *[Signature]* Date *5/13/95*



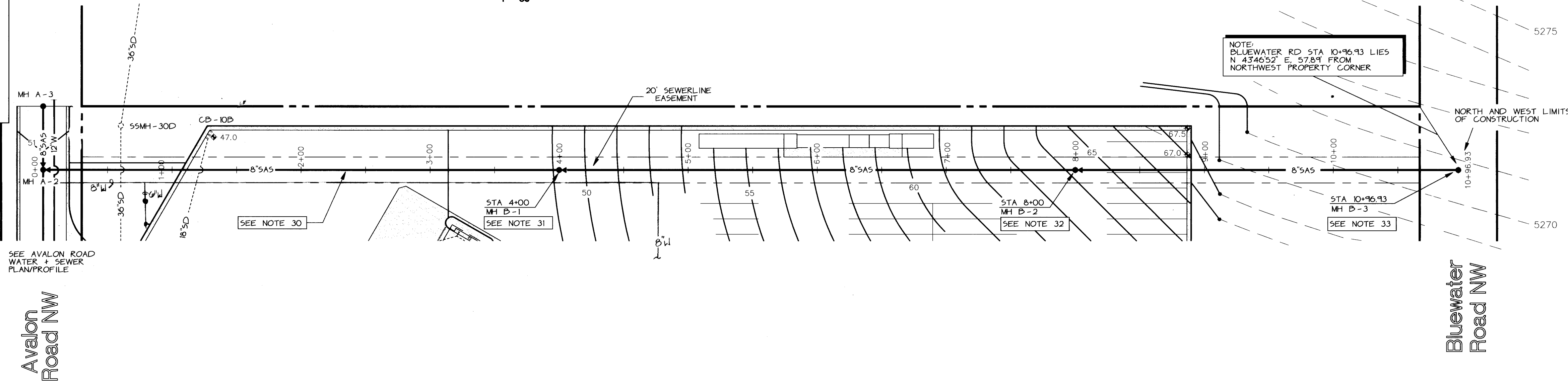
CITY OF ALBUQUERQUE PUBLIC WORKS DEPARTMENT ENGINEERING GROUP					
TITLE: AVALON ROAD NW WATER & SEWER PLAN / PROFILE					
APPROVALS	ENGINEER	DATE	APPROVALS	ENGINEER	DATE
DRC CHAIRMAN	<i>[Signature]</i>	3-30-95	WATER	<i>R.W. Kane</i>	11-23-94
TRANSPORTATION	<i>M.A. RHO</i>	11-27-94	WASTE WATER	<i>R.W. Kane</i>	11-23-94
HYDROLOGY	<i>N/A SMC</i>	3-16-95			
PROJECT NO.	4506.90	MAP NO.	K 8	SHEET	3 OF 4

1 2 3 4 5 6 7 8 9 10 11 12 13 14 15  
24-4506.90-12-01



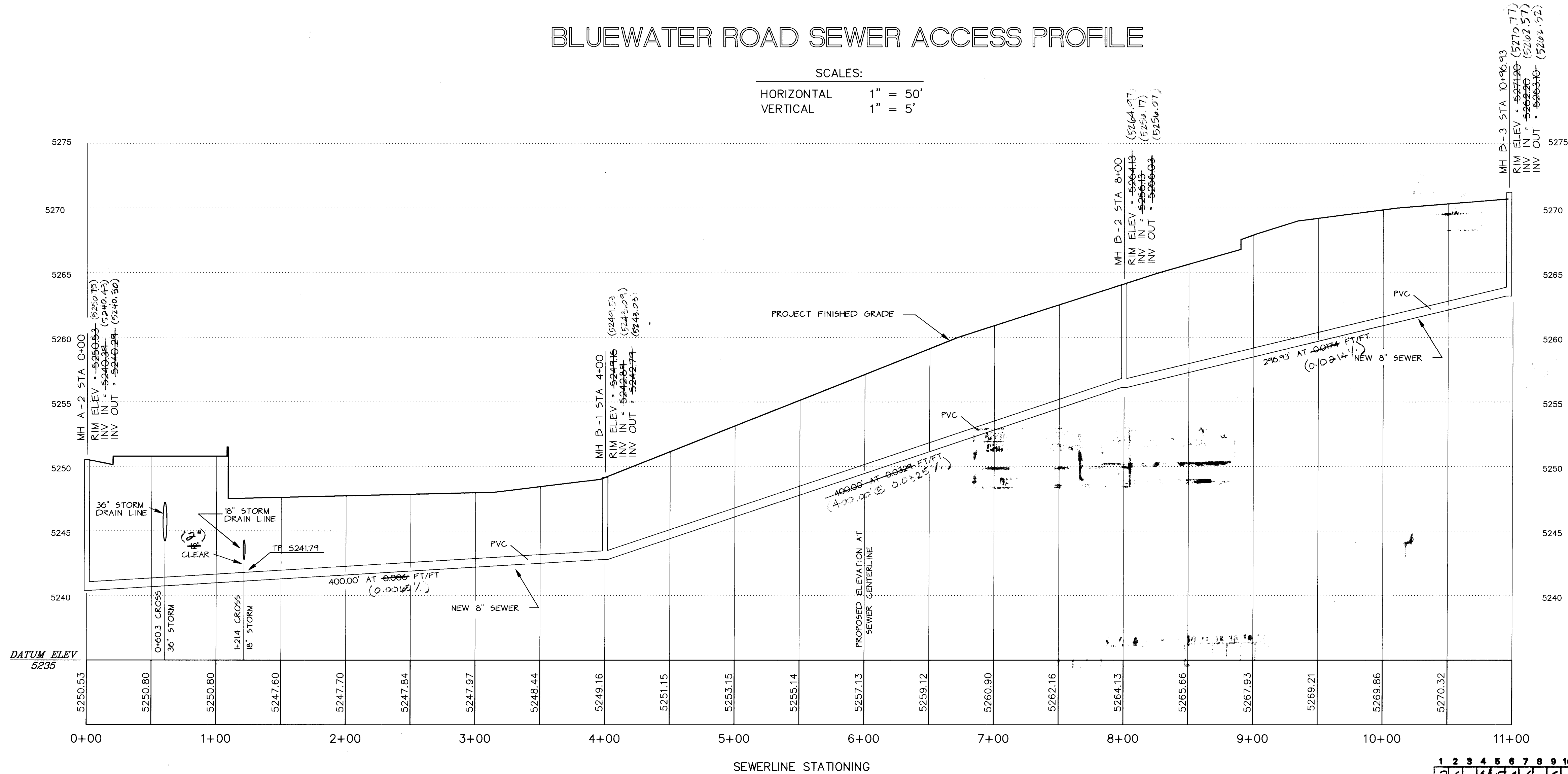


BLUEWATER ROAD SEWER ACCESS PLAN



BLUEWATER ROAD SEWER ACCESS PROFILE

SCALES:  
HORIZONTAL 1" = 50'  
VERTICAL 1" = 5'



GENERAL NOTES

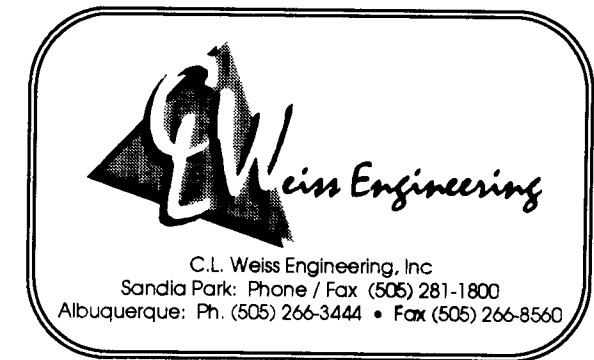
- INSTALL 8" SAS LINE CONNECTING MANHOLES MH A-2 THROUGH MH B-3 LOCATED AT CENTER OF BLUEWATER ROAD NW RIGHT-OF-WAY.
- INSTALL TYPE 'E' MANHOLE. SEE C.O.A. STD. DWGS. 2102 AND 210.
- INSTALL TYPE 'E' MANHOLE. SEE C.O.A. STD. DWGS. 2102 AND 210.
- INSTALL TYPE 'E' MANHOLE. SEE C.O.A. STD. DWGS. 2102 AND 210.

TRAFFIC HANDLING NOTES

- CONTRACTOR MUST SUBMIT A CONSTRUCTION SIGNING AND BARRICADING PLAN TO BERNALILLO COUNTY TRAFFIC CONTROL ENGINEER AND RECEIVE A BARRICADING PERMIT PRIOR TO CONSTRUCTION.
- ALL CONSTRUCTION SIGNING AND BARRICADING SHALL COMPLY WITH MANUAL ON UNIFORM TRAFFIC CONTROL DEVICES, 1989 EDITION, REVISION 3, SEPTEMBER 1993.
- CONTRACTOR'S OPERATION, BARRICADING AND SIGNING SHALL NOT AFFECT THROUGH LANES BETWEEN 7 AM AND 9 AM OR 4 PM AND 6 PM ON 18TH STREET OR AVALON ROAD NW.
- SEE ALSO RELATED PROJECT DRAWINGS 18TH STREET IMPROVEMENTS PLAN/PROFILE, AVALON ROAD NW STREET + STORM DRAIN PLAN/PROFILE, BERNALILLO COUNTY PUBLIC WORKS DEPT. AND 18TH STREET IMPROVEMENTS TRAFFIC CONTROL PLAN (NMSHD).

RECORD DRAWING  
The information shown was  
provided by the City of Albuquerque  
and was transcribed by C.L. Weiss Engineering, Inc.

SCANNED BY  
RYLASON



CITY OF ALBUQUERQUE  
PUBLIC WORKS DEPARTMENT  
ENGINEERING GROUP

TITLE: BLUEWATER ROAD NW  
SEWER ACCESS PLAN / PROFILE

APPROVALS	ENGINEER	DATE	APPROVALS	ENGINEER	DATE
DRC CHAIRMAN	<i>S. G. Lohdy</i>	3-20-95	WATER	<i>R. W. Kane</i>	11-23-94
TRANSPORTATION	<i>N/A</i>	11-23-94	WASTE WATER	<i>R. W. Kane</i>	11-23-94
HYDROLOGY	<i>N/A</i>	3-16-95			

PROJECT NO.	4506.90	MAP NO.	K 8	SHEET	4 OF 4
-------------	---------	---------	-----	-------	--------