

CITY OF ALBUQUERQUE PUBLIC WORKS DEPARTMENT

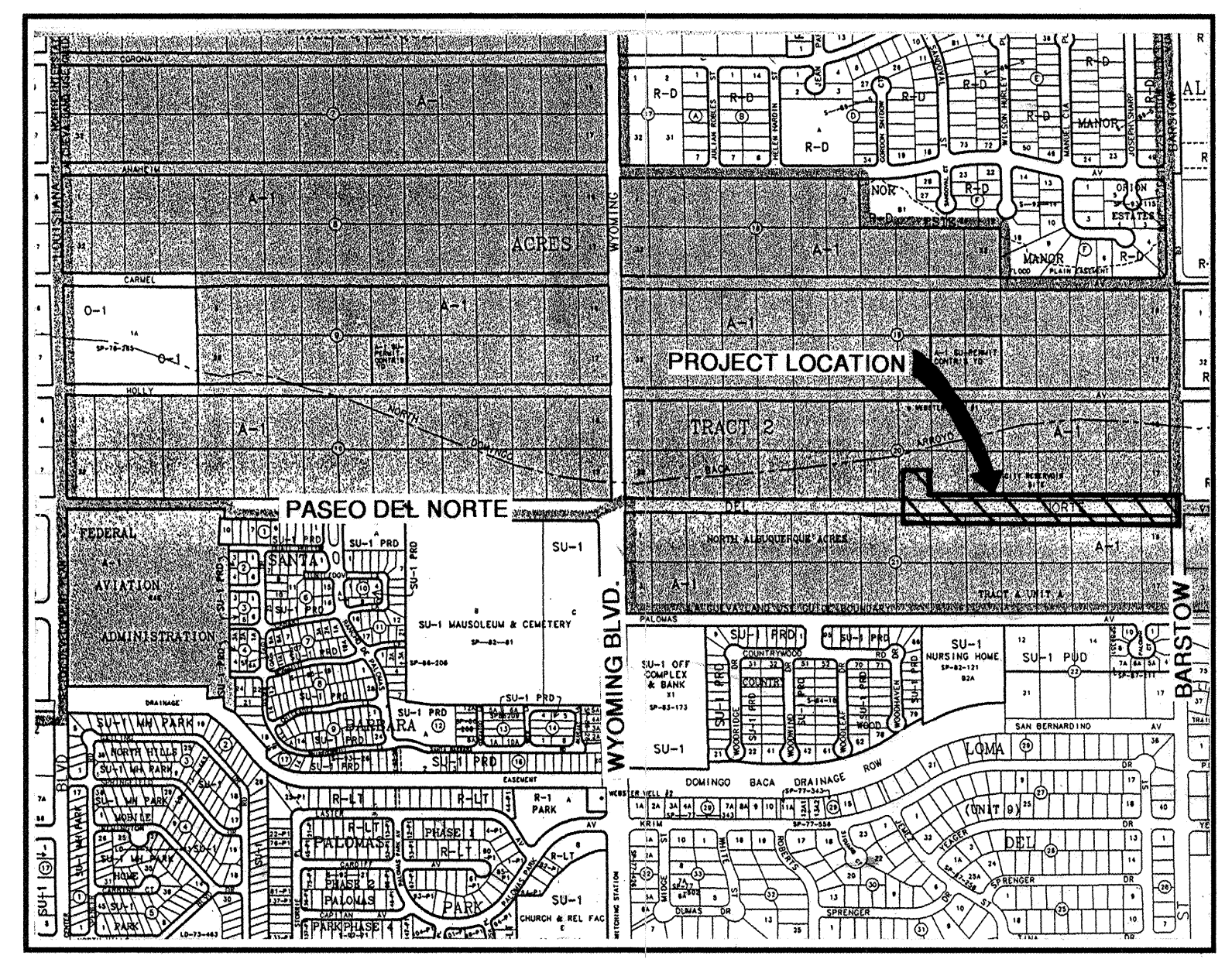


CONSTRUCTION PLANS WEBSTER PUMP STATION 36" TRANSMISSION LINE PROJECT NO. 4536.91

INDEX OF SHEETS

1. TITLE SHEET
2. TRANSMISSION LINE PLAN & PROFILE STA 1+00 TO STA 12+00
3. TRANSMISSION LINE PLAN & PROFILE STA 12+00 TO 14+93
4. PRESSURE REDUCING STATION DETAIL
- 4A. ELECTRICAL PLAN
5. CONSTRUCTION SEQUENCING
6. TRAFFIC CONTROL - PHASE I
7. TRAFFIC CONTROL - PHASE II
- 8-9. TRAFFIC CONTROL - PHASE III
10. TRAFFIC CONTROL STANDARDS
11. TRAFFIC CONTROL STANDARDS

APPROVAL OF AS BUILT DRAWINGS
CHIEF CONSTRUCTION ENGINEER
Chen Chang
DATE 1-27-99



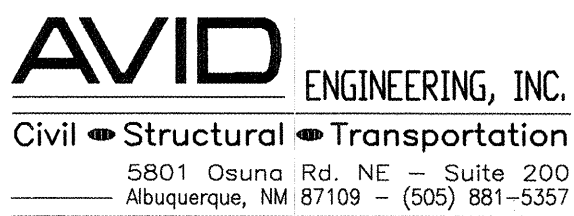
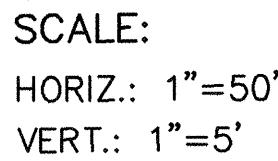
LOCATION MAP
ZONE ATLAS MAPS C-19, D-19

GENERAL NOTES

1. ALL WORK DETAILED ON THESE PLANS, UNLESS STATED OTHERWISE OR PROVIDED FOR HEREON, SHALL BE PERFORMED IN ACCORDANCE WITH CITY OF ALBUQUERQUE STANDARD SPECIFICATIONS FOR PUBLIC WORKS CONSTRUCTION - THROUGH UPDATE NO. 6.
2. TWO WORKING DAYS PRIOR TO ANY EXCAVATION, CONTRACTOR MUST CONTACT NEW MEXICO ONE-CALL SYSTEM, (505) 260-1990, FOR LOCATION OF EXISTING UTILITIES.
3. PRIOR TO CONSTRUCTION, THE CONTRACTOR SHALL EXCAVATE AND VERIFY THE HORIZONTAL AND VERTICAL LOCATIONS OF ALL POTENTIAL OBSTRUCTIONS. SHOULD A CONFLICT EXIST, THE CONTRACTOR SHALL NOTIFY THE OWNER SO THAT THE CONFLICT CAN BE RESOLVED WITH A MINIMUM OF DELAY.
4. IT WILL BE THE CONTRACTOR'S RESPONSIBILITY TO PROTECT AND MAINTAIN IN SERVICE ALL EXISTING UTILITIES.
5. WHEN ABUTTING NEW PAVEMENT TO EXISTING, SAWCUT EXISTING PAVEMENT TO A STRAIGHT EDGE AND AT A RIGHT ANGLE, OR AS APPROVED BY THE OWNER.
6. CONSTRUCTION OF TEMPORARY PAVEMENT SHALL BE PER CITY OF ALBUQUERQUE DWG 2415.
7. A DISPOSAL SITE FOR ALL EXCESS EXCAVATED MATERIAL, ASPHALTIC PAVING, CONCRETE CURBS AND SIDEWALKS, ETC., SHALL BE OBTAINED BY THE CONTRACTOR IN COMPLIANCE WITH APPLICABLE ENVIRONMENTAL REGULATIONS. ALL COSTS INCURRED IN OBTAINING A DISPOSAL SITE AND HAUL HERETO SHALL BE CONSIDERED INCIDENTAL TO THE PROJECT AND NO SEPARATE MEASUREMENT OR PAYMENT SHALL BE MADE.
8. THE CONTRACTOR SHALL TAKE PRECAUTIONS TO PROTECT HORIZONTAL AND VERTICAL CONTROL SURVEY MONUMENTS (MARK) FROM DAMAGE PRIOR TO INITIATING CONSTRUCTION. IF DURING THE COURSE OF CONSTRUCTION OPERATIONS, THE CONTRACTOR DISTURBS OR DESTROYS A MARK, THE CONTRACTOR WILL COMPENSATE THE CITY FOR THE COST OF REESTABLISHING A NEW MARK.
9. THE CONTRACTOR WILL BE RESPONSIBLE FOR THE TIMING AND COORDINATION OF THE WATER SHUT-OFF REQUIREMENTS IN CONJUNCTION WITH THE COMPLETION OF THIS PROJECT. AT LEAST (3) WORKING DAYS PRIOR TO CONSTRUCTION THE CONTRACTOR SHALL CONTACT PWD/WATER SYSTEMS DIVISION (857-8200) TO INITIATE IMPLEMENTATION OF THIS WATER SHUT-OFF PLAN.
10. TRAFFIC CONTROL SHALL BE COORDINATED WITH THE BERNALILLO COUNTY TRAFFIC CONTROL MANAGER.

AVID ENGINEERING, INC.
Civil • Structural • Transportation
5801 Osuna Rd. NE - Suite 200
Albuquerque, NM 87109 - (505) 881-5357

1, 2, 4, 4A	<i>Billy G. Scobey</i>	4/30/97	<i>Kurt R. S.</i>	4/30/97	
REV. SHEETS	CITY ENGINEER	DATE	USER	DEPARTMENT	DATE
ENGINEERS STAMP & SIGNATURE		APPROVALS	ENGINEER	DATE	*****
		DRC Chairman	<i>Billy G. Scobey</i>	12/19/96	APPROVED FOR CONSTRUCTION
		Transportation	N/A		
		Water/Wastewater	<i>Rogan Xue</i>	11/23/96	
		Hydrology	N/A		
		Parks	N/A		
		Constr. Mngmt.	N/A		
		County	<i>S. G. ...</i>	9/15/96	
		City Project No.	4536.91		
		Sheet	1	Of	11



TITLE:	WEBSTER PUMP STATION WATER TRANSMISSION LINE PLAN & PROFILE STA. 1+00 TO STA. 12+00
--------	---

DESIGN REVIEW COMMITTEE	CITY ENGINEER APPROVAL	MO./DAY/YR.	MO./DAY/YR.
-------------------------	------------------------	-------------	-------------

APPROVE

APR 30 1997

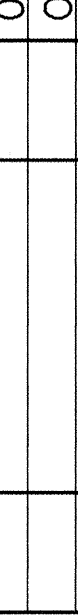
DESIGN
REVIEW COMMITTEE

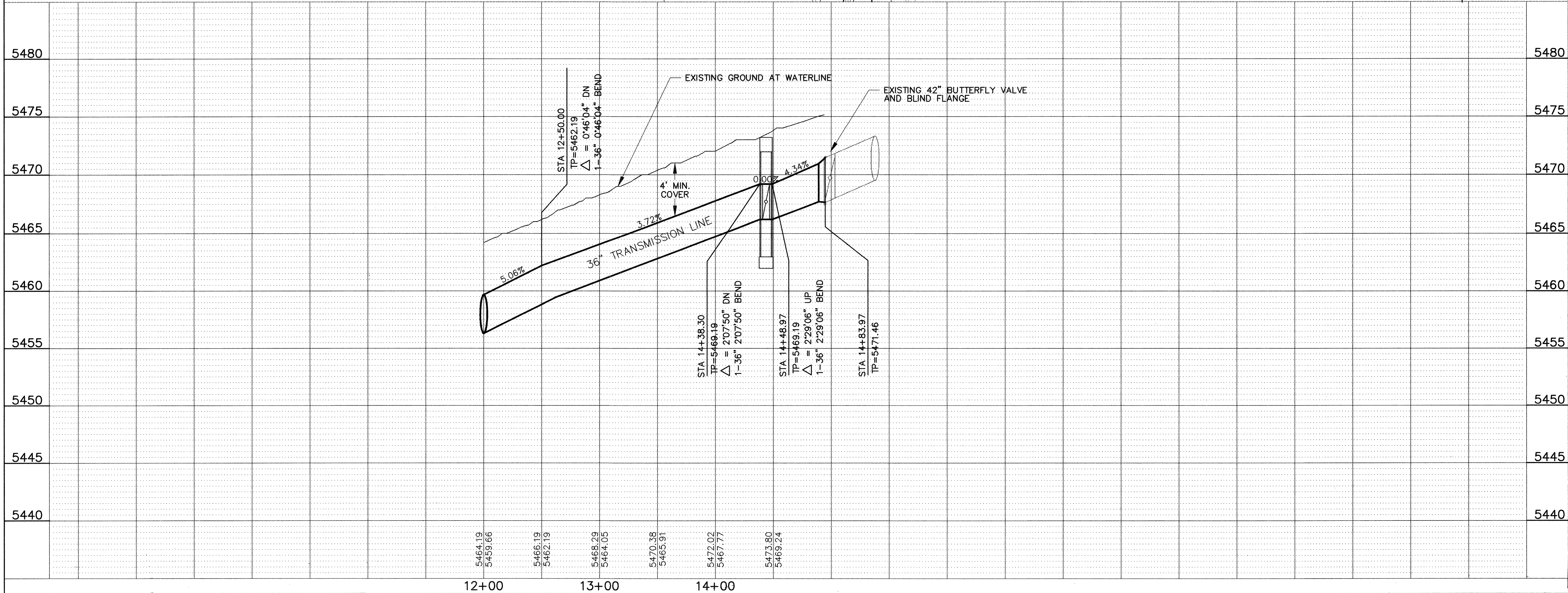
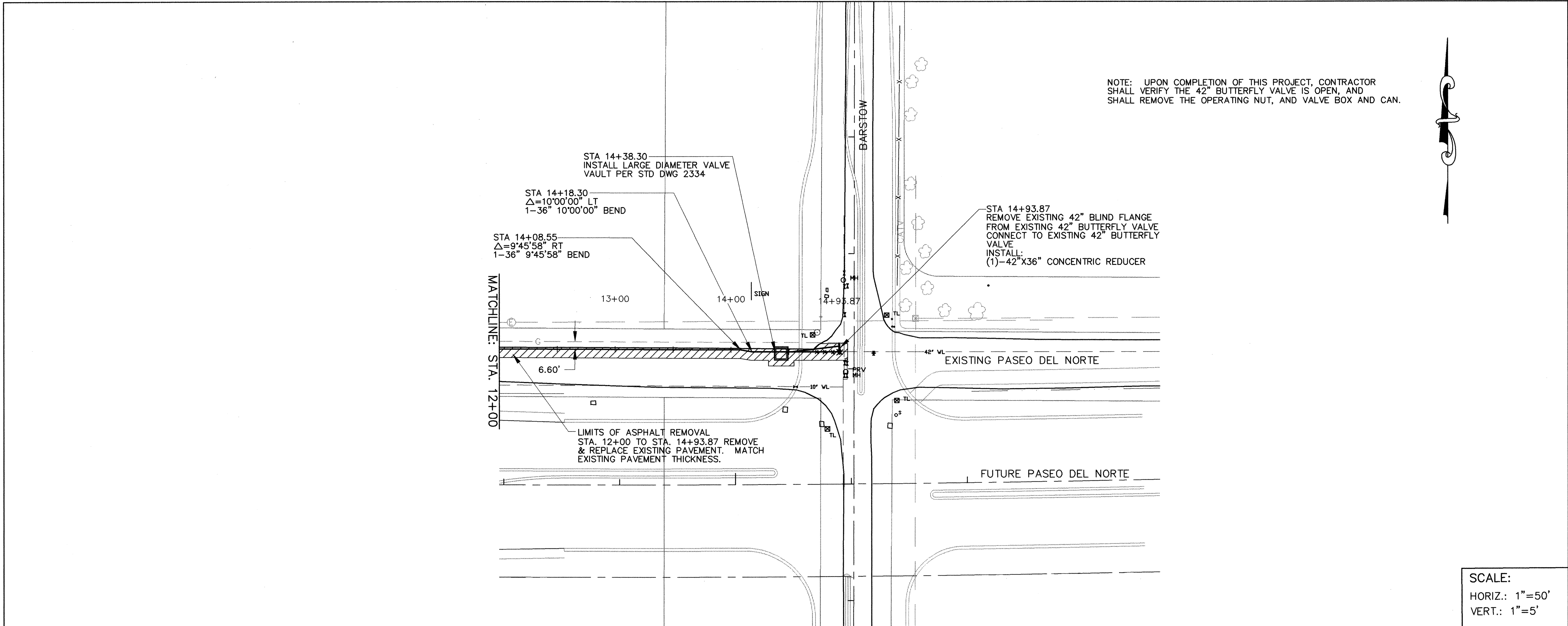
APPROVE

APR 30 1997

CITY ENGINEER

DRAWING NO.	4536.91	MAP NO. C-19	SHEET 2	OF 11
----------------	---------	-----------------	------------	----------

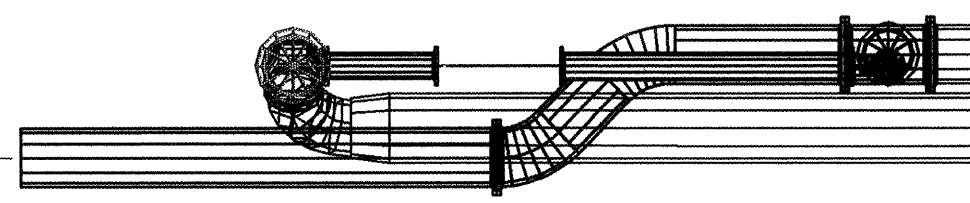
Δ	4/30/97	This sheet replaces original sheet approved 3/4/97.	ENGINEER'S SEAL		SURVEY INFORMATION			BENCH MARKS		AS BUILT INFORMATION		
					FIELD NOTES NO. BY DATE			STATION MARK IS A STANDARD USC&GS BRASS TABLET STAMPED, "HEAVEN 1969" 0.15 MILE WEST OF WYOMING, 70' SOUTH OF PASEO DEL NORTE. GRID COORDINATES X=407.051-31, Y=1.518,737.03, GROUND-T-O- GRID FACTOR 0.99965263, ELEV.=5378.787'		CONTRACTOR <u>AH Undergrnd</u> WORKED BY <u>AH Undergrnd</u> DATE <u>12/84</u> INSPECTORS <u>AA Undergrnd</u> DATE <u>1/85</u> FIELD ASSISTANCE BY <u>AA Undergrnd</u> DATE <u>1/85</u> VERIFICATION BY <u>AA Undergrnd</u> DATE <u>1/85</u> THIS PLAN WAS CORRECTED BY <u>AWL</u> DATE <u>1/86</u> THIS PLAN WAS CORRECTED BY <u>AWL</u> DATE <u>1/86</u> MICRO-FILM INFORMATION		
		REMARKS	BY									
		DESIGN										
		DATE										
		DRAWN BY										
		NO.										



AS BUILT INFORMATION		BENCH MARKS		SURVEY INFORMATION		ENGINEER'S SEAL	
CONTRACTOR: <i>Alt Underwood</i>		STATION MARK IS A STANDARD US&GS BRASS TABLET STAMPED, "HEAVEN 1969" 0.15 MILE WEST OF WYOMING, 70' SOUTH OF PASEO DEL NORTE. GRID COORDINATES X=407,051.31, Y=1,518,737.03, GROUND-TO-GRID FACTOR 0.99965263, ELEV=5378.787		FIELD NOTES		NO. DATE	
WORK STARTED BY: <i>Alt Underwood</i>				BY		BY	
ACCEPTANCE BY: <i>Alt Underwood</i>						REMARKS	
FIELD CHECKED BY: <i>Alt Underwood</i>						DESIGN	
DRAWINGS CORRECTED BY: <i>Alt Underwood</i>						DATE	
MICRO-FILM INFORMATION						DESIGNED BY	
RECORDED BY						DRAWN BY	
NO.						CHECKED BY	
						DATE	
						DATE	
						DATE	
CITY OF ALBUQUERQUE PUBLIC WORKS DEPARTMENT ENGINEERING DEVELOPMENT GROUP							
TITLE: WEBSTER PUMP STATION WATER TRANSMISSION LINE PLAN & PROFILE STA. 12+00 TO STA. 15+20							
DESIGN REVIEW COMMITTEE		CITY ENGINEER APPROVAL		MO./DAY/YR.		MO./DAY/YR.	
APPROVE DEC 10 1995		APPROVE MAR 4 1997					
DESIGN REVIEW COMMITTEE		CITY ENGINEER					
DRAWING NO. 4536.91		MAP NO. C-19		SHEET 3		OF 11	

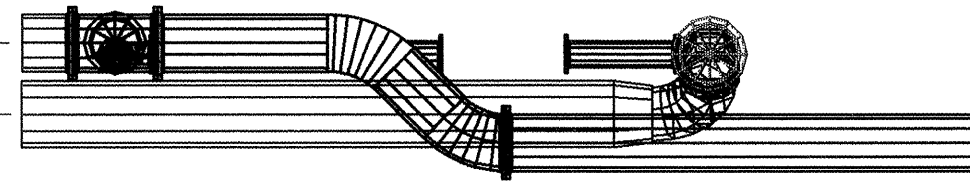
MARK	QTY	SIZE	SCH	DESCRIPTION	TAG	PIECEMARK
1	1	36"x30"	STD	TEE, FLXFL		
2	1	30"x18"	STD	ECCENTRIC REDUCER, FLXFL		
3	2	36"	STD	BLIND FLANGE		
4	1	12"	STD	90 DEGREE BEND, FLXFL		
5	2	36"	STD	45 DEGREE LONG RADIUS BEND, FLXPE		
6	1	36"x18"	STD	TEE, FLXFL W/MEGAFLANGE-FLANGE ADAPTER EAST SIDE OF FITTING		
7	1	36"	STD	45 DEGREE LONG RADIUS BEND, VERTICAL PE-XPE (FUTURE)		
8	1	48"x36"	STD	CONCENTRIC REDUCER PE-XPE (FUTURE)		
9	1	36"	STD	90 DEGREE SHORT RADIUS BEND, PE-XPE ROTATED UP 45 DEGREES (FUTURE)		
10	1	12"	STD	BUTTERFLY VALVE, FLXFL		
A	2	12"	STD	SPOOL, FLXPE W/MEGA LUG RESTRAINT @ BUTTERFLY VALVE		
B	2	12"	STD	SPOOL, FLXPE		VARIOUS LENGTHS
C	1	36"	STD	SPOOL, FLXPE		VARIOUS LENGTHS
D	1	36"	STD	SPOOL, PE-XPE		
E	1	36"	STD	SPOOL WITH BLIND FLANGE, (EXISTING)		
F	1	42"	STD	SPOOL, PE-XPE (FUTURE)		
G	1	36"	STD	SPOOL, FLXPE (FUTURE)		
H	2	36"	STD	SPOOL, FLXPE (FUTURE)		
J	1			CONCRETE VAULT		

DISCHARGE HEADER
CL ELEV. = 5425.50'



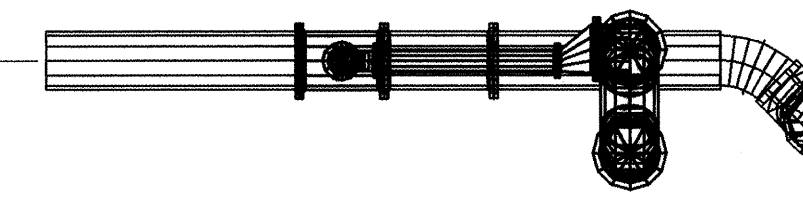
EAST ELEVATION

FUTURE DISCHARGE HEADER
CL ELEV. = 5430.75'
FUTURE SUCTION HEADER
CL ELEV. = 5427.00'



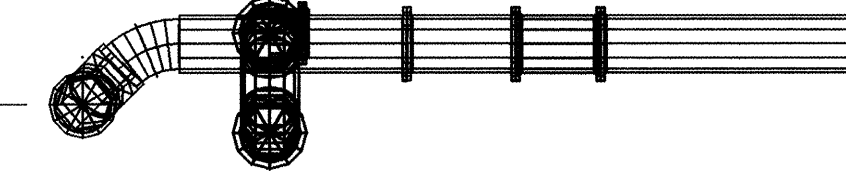
WEST ELEVATION

EXISTING 36" SUCTION HEADER STUB
CL ELEV. = 5430.17'

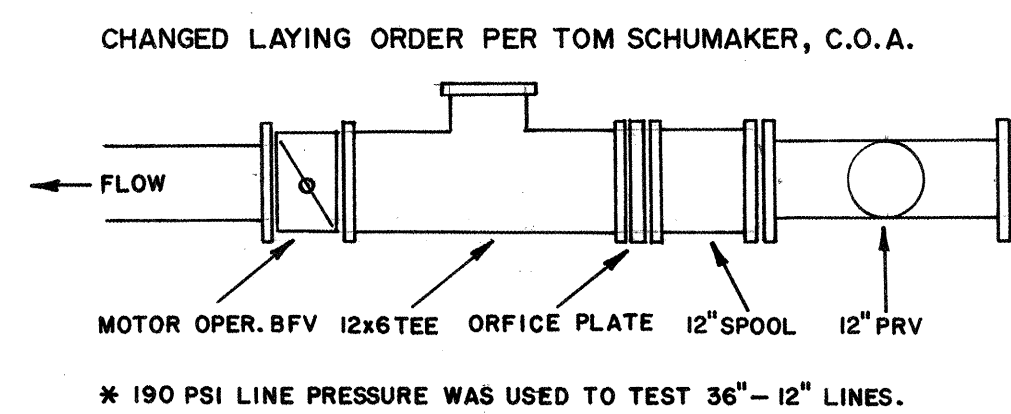
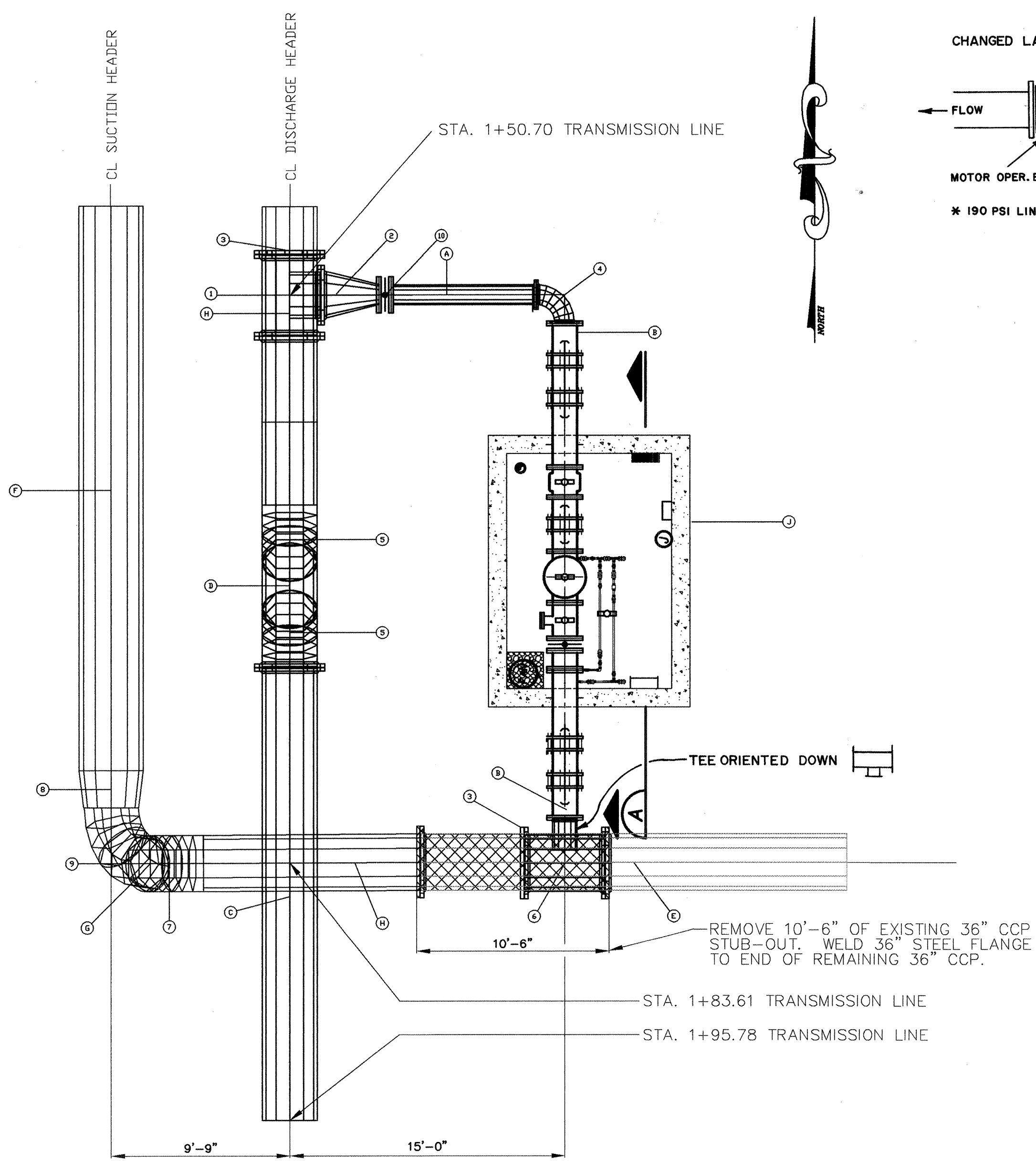


NORTH ELEVATION

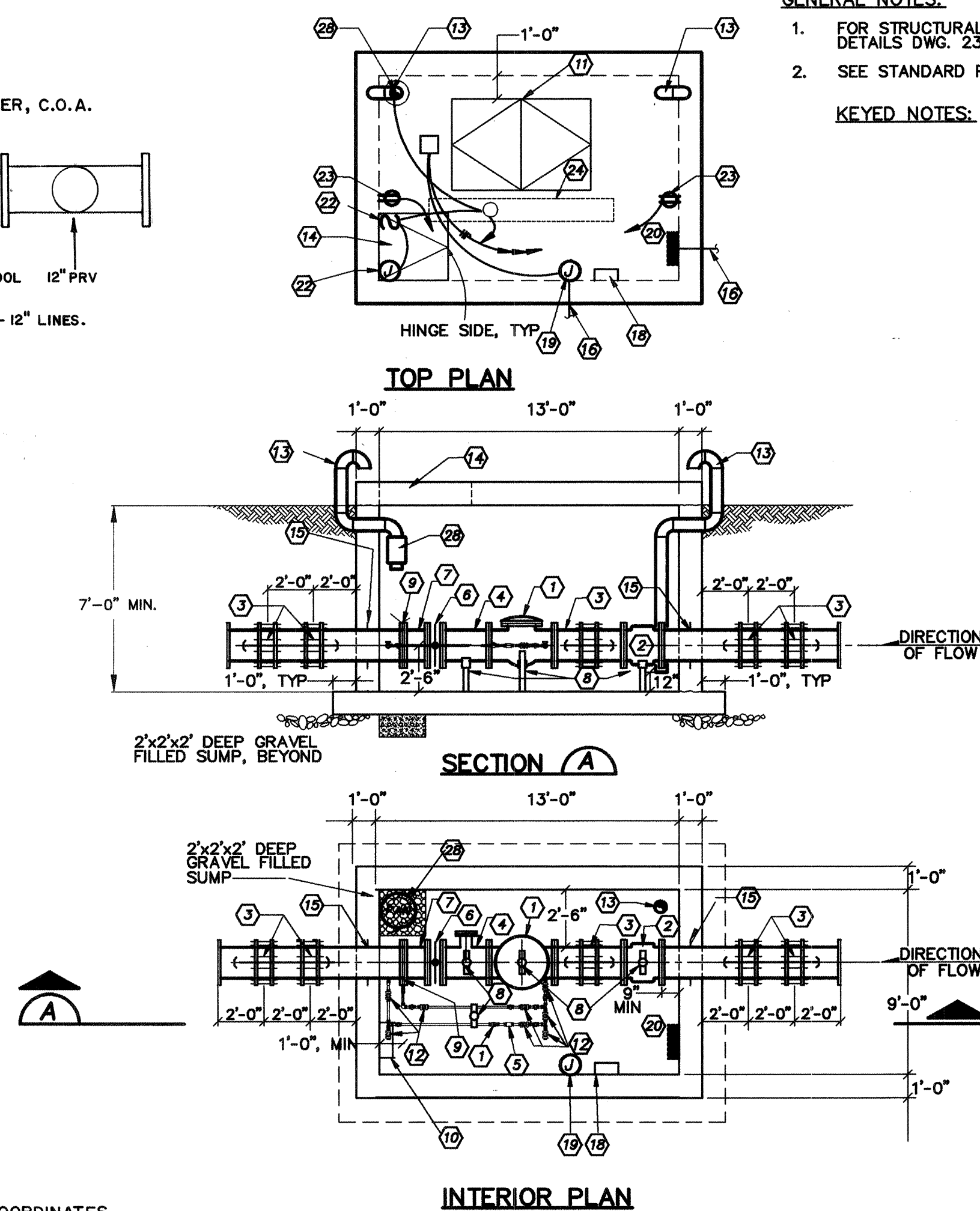
FUTURE SUCTION HEADER
CL ELEV. = 5427.00'



SOUTH ELEVATION



NOTE: ELEVATIONS & COORDINATES OF BLIND FLANGES ARE ON SHEET 2 OF 11.



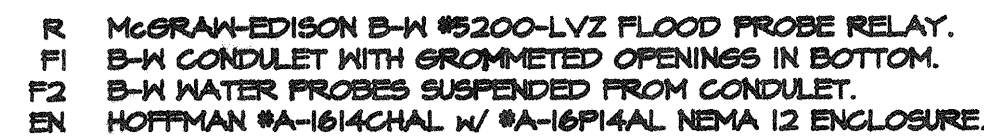
PRV W/METER VAULT DETAILS

- GENERAL NOTES:**
- FOR STRUCTURAL DETAILS AND REINFORCING SEE STANDARD PRV STATION STRUCTURAL DETAILS DWG. 2357.
 - SEE STANDARD PRV STATION, NO METER DWG. 2354 FOR ADDITIONAL CONSTRUCTION NOTES.
- KEYED NOTES:**
- PRESSURE REDUCING VALVE, AS SPECIFIED BELOW
Clayton 600 Series, 5 to 15 PSI reducing (2-30 PSI CRD)
Series 990 1/2" bypass 3-30 PSI
Opening and Closing speed control
Dual solenoid control
131VC flow controller for RTU control closing on power failure.
 - MAGNETIC FLOW METER, KROHNE IFS4000 SERIES W/HARD RUBBER LINER AND 316 SS ELECTRODES
 - FLEXIBLE COUPLING WITH THRUST TIES, SEE THRUST TIE DETAIL ON DWG. 2355.
 - 12" x 6" TEE, FLXFL W/BLIND FLANGE
 - STANDARD 5/8"x3/4" WATER METER, CITY FURNISHED
 - MOTOR OPERATED BUTTERFLY VALVE, EIM 120/208 3 PHASE WITH THE FOLLOWING:
Integral Reversing Contactor
Open and Close Pushbuttons
Open and Close Pilot Lights
Position Indicating Switches
12" SPOOL (FLXFL), LENGTH = 1'-0"
 - ADJUSTABLE PIPE SADDLE SUPPORT, GRINNELL FIG. 264, ELCEN FIG. 50 OR EQUAL
 - ORIFICE PLATE, CLAYTON X52A-1, 6500 GPM W/70 PSI DROP
 - 1'-6" WIDE ALUMINUM LADDER W/LADDER UP SAFETY POST
 - ALUMINUM FLOOR DOOR WITH RECESSED HASP COVERED BY A HINGED LID FLUSH WITH TOP SURFACE. DOOR SIZE SHALL BE 4'-6" DOUBLE LEAF. HARDWARE AND HINGES SHALL BE TYPE 304 STAINLESS STEEL. BILCO TYPE JD OR EQUAL.
 - 3/4" BALL VALVE
 - 6" STEEL PIPE W/GOOSENECK AND INSECT SCREEN
 - 3'-0" SQ ALUMINUM FLOOR DOOR WITH RECESSED HASP COVERED BY A HINGED LID FLUSH WITH TOP SURFACE. HARDWARE AND HINGES SHALL BE TYPE 304 STAINLESS STEEL. BILCO TYPE J OR EQUAL.
 - WALL PIPE WITH THRUST COLLAR, CENTER IN WALL
 - REFER TO ELECTRICAL SITE PLAN FOR CONTINUATION
 - KHRONE MODEL IFC110 MAGNETIC INDUCTIVE FLOWMETER CONVERTER
 - WEATHERPROOF JUNCTION BOX FOR CONNECTION OF VAULT FLOOD LEVEL ELEMENT
 - 100 AMP, 120/208 VOLT, THREE PHASE THREE WIRE CIRCUIT BREAKER PANEL
 - WEATHERPROOF JUNCTION BOXES FOR CONNECTION TO TWO POLE MICROSWITCH FOR INTRUSION ALARM AND FOR CONNECTION TO DPDT MICROSWITCH TO ENERGIZE LIGHTS AND EXHAUST FAN WHEN ACCESS DOOR IS OPENED
 - WEATHERPROOF, GFI DUPLEX RECEPTACLE 48" ABOVE FINISH FLOOR
 - 2-LAMP STRIP 8' FLUORESCENT ENCLOSED SURFACE MOUNTED LIGHT FIXTURE
 - INLINE EXHAUST FAN 35 CFM W/SWITCH AND ACCESS DOOR CONTROLS

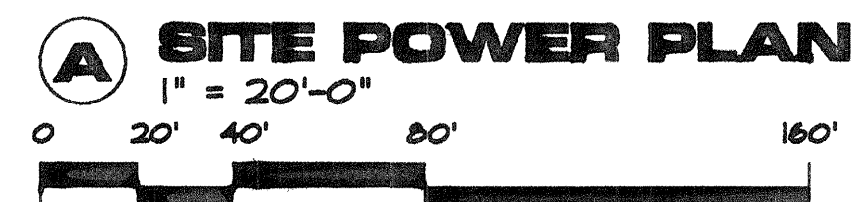
AVID ENGINEERING, INC.
Civil • Structural • Transportation
5801 Osuna Rd., NE - Suite 200
Albuquerque, NM 87109 - (505) 881-3327

CITY OF ALBUQUERQUE PUBLIC WORKS DEPARTMENT TRANSPORTATION DEVELOPMENT			
TITLE: WEBSTER PUMP STATION WATER TRANSMISSION LINE PRV STATION DETAILS			
DESIGN REVIEW COMMITTEE APR 30 1997	CITY ENGINEER APPROVAL APR 30 1997	MO./DAY/YR.	MO./DAY/YR.
DESIGNED BY	DRAWN BY	CHECKED BY	DATE
City Project No. 4536.91		Zone Map No. C-19	Sheet 4 Of 11

AS BUILT INFORMATION		BENCH MARKS		SURVEY INFORMATION		ENGINEER'S SEAL	
CONTRACTOR	NO.	NO.	DATE	NO.	DATE	NO.	DATE
WORK STARTED BY	DATE	INSPECTOR'S FIELD	DATE	FIELD	DATE	NO.	DATE
INSPECTOR'S DATE	DATE	VERIFICATION BY	DATE	VERIFICATION BY	DATE	NO.	DATE
RECORDED BY	DATE	RECORDED BY	DATE	RECORDED BY	DATE	NO.	DATE



NOTE: SWITCH SHOWN WITH DOOR IN OPEN POSITION.



WORK NOTES

THESE NOTES APPLY ONLY TO THIS DRAWING.
SOME NOTES MAY NOT BE USED ON THIS DRAWING.

1. EXISTING SERVICE RISER POLE.
2. EXISTING UNDERGROUND MEDIUM VOLTAGE SERVICE LATERAL. VERIFY LOCATION.
3. EXISTING PAD-MOUNT METERING.
4. EXISTING PAD-MOUNT MEDIUM VOLTAGE SWITCH.
5. EXISTING PAD-MOUNT OIL-FILLED TRANSFORMER.
6. EXISTING MEDIUM VOLTAGE SWITCHBOARD.
7. PROVIDE NEW RECESSED PULL BOX EQUAL TO GUAZITE #SGT50BA1D W/ #SGT50CA1T COVER. REFER TO DETAIL 'I' IN THIS DRAWING.
8. PROVIDE CONDUIT FOR POWER AND SIGNAL UNDERGROUND BETWEEN WELL HOUSE AND NEW VALVE VAULT.
9. NEW PRV VALVE VAULT. REFER TO PRV VAULT DRAWING IN THIS SET.
10. EXISTING WESTINGHOUSE 120/208V-5P-4W-6 150-AMPERE 42 CIRCUIT PANELBOARD INSIDE SWITCHBOARD SECTION. PROVIDE 60AMP TYPE 'B' CIRCUIT BREAKER AND INSTALL IN SPACES 50-A042 AND CONNECT NEW FEEDER TO BREAKER.
11. 4#211#66-11/2" UNDERGROUND TO NEW VAULT. REFER TO PLAN 'A' THIS DRAWING.
12. 14#10 8-1/2" 20#18TSP 11/2" FOR ALARM AND CONTROL SIGNALS. PROVIDE NEW TERMINAL STRIP IN RTE ENCLOSURE AND TERMINATE. COLOR CODE CONDUCTORS IN PAIRS.
13. ROUTE NEW CONDUITS 42-IN BELOW FINISH GRADE TO NEW VALVE VAULT. REFER TO PLAN 'A' THIS DRAWING.

[illegible]

1. PHASE 1 CONSTRUCTION SHALL BE DONE ON A SUNDAY BETWEEN THE HOURS OF 6:00 AM AND 6:00 PM. NOTIFICATION TO AFFECTED BUSINESSES AND RESIDENTIAL AREAS SHALL BE GIVEN 9 DAYS PRIOR TO CONSTRUCTION.
2. CLOSE EASTBOUND LANE ON PASEO DEL NORTE. PROVIDE FLAGGERS TO DIRECT TWO-WAY TRAFFIC.

1. CLOSE BARSTOW NORTH FROM PASEO DEL NORTE TO HOLLY AVE.
2. SHIFT TRAFFIC TO SOUTH DRIVING LANE & TEMPORARY PAVEMENT ON PASEO DEL NORTE.
3. MAKE CONNECTION TO EXISTING 42" WATERLINE. CONSTRUCT NEW 36" TRANSMISSION LINE STATION 14+00 TO STATION 14+93.87 INCLUDING LARGE DIAMETER VALVE VAULT.
4. ACCESS TO BARSTOW NORTH SHALL BE ALLOWED THROUGH WYOMING BLVD. & HOLLY AVE. DETOUR
5. LEFT TURNS ONTO BARSTOW SHALL NOT BE PERMITTED DURING PHASE 2.

1. CONSTRUCT 36" TRANSMISSION LINE STA. 3+00 TO STA. 14+00
2. LEFT TURNS ONTO BARSTOW SHALL NOT BE PERMITTED DURING PHASE 3.
3. PROVIDE RIGHT TURN LANE ON WESTBOUND PASEO DEL NORTE AT BARSTOW

CONNECTION #1

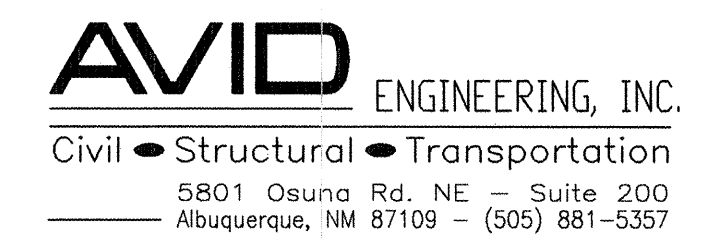
2. CONNECT TO EXISTING 42" CCP AT BARSTOW. EXISTING 42" BUTTERFLY VALVE ① IS CURRENTLY CLOSED. AFTER 42" CONNECTION IS MADE AND NEW 36" VALVE AND VAULT ARE INSTALLED, CLOSE NEW 36" BUTTERFLY VALVE ② AND OPEN 42" BUTTERFLY VALVE ①.

CONNECTION #2

1. CONNECT TO EXISTING 36" CCP STUB-OUT. EXISTING 36" GATE VALVE ③ IS CURRENTLY CLOSED.

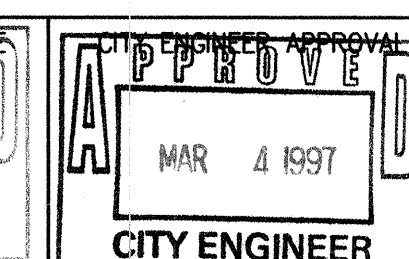
FLUSHING & DISINFECTION

1. FOLLOWING COMPLETE INSTALLATION OF NEW 36" TRANSMISSION LINE, OPEN NEW 36" BUTTERFLY VALVE ②. EXISTING 36" GATE VALVE ③ IS TO REMAIN CLOSED DURING FLUSHING. WATER SHALL BE DISCHARGED INTO ADJACENT 36" RCP STORM DRAIN.
2. OPEN 8" GATE VALVE ④ IN NEW PRV MANHOLE IN ORDER TO FLUSH LINE (SEE SHEET 4 FOR PRV DETAIL). CLOSE 8" GATE VALVE ④ AND 36" BUTTERFLY VALVE ② WHEN LINE IS FLUSHED.
3. DISINFECTION SHALL BE IN ACCORDANCE WITH CITY OF ALBUQUERQUE, STANDARD SPECIFICATIONS SEC. 801.17.2 USING A SODIUM HYPOCHLORITE SOLUTION.
4. WHEN THE WATERLINE IS READY TO BE PLACED IN SERVICE, OPEN THE NEW 36" BUTTERFLY VALVE ② AND THE 36" GATE VALVE ③.



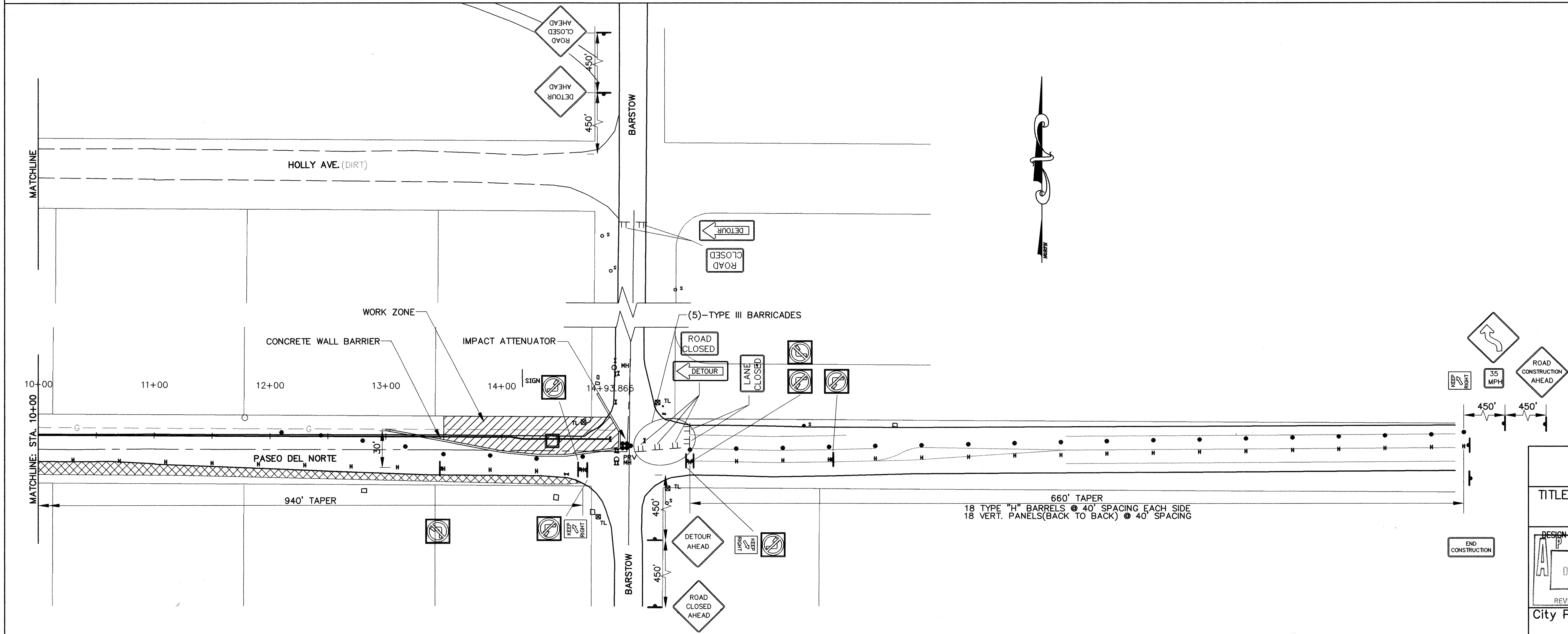
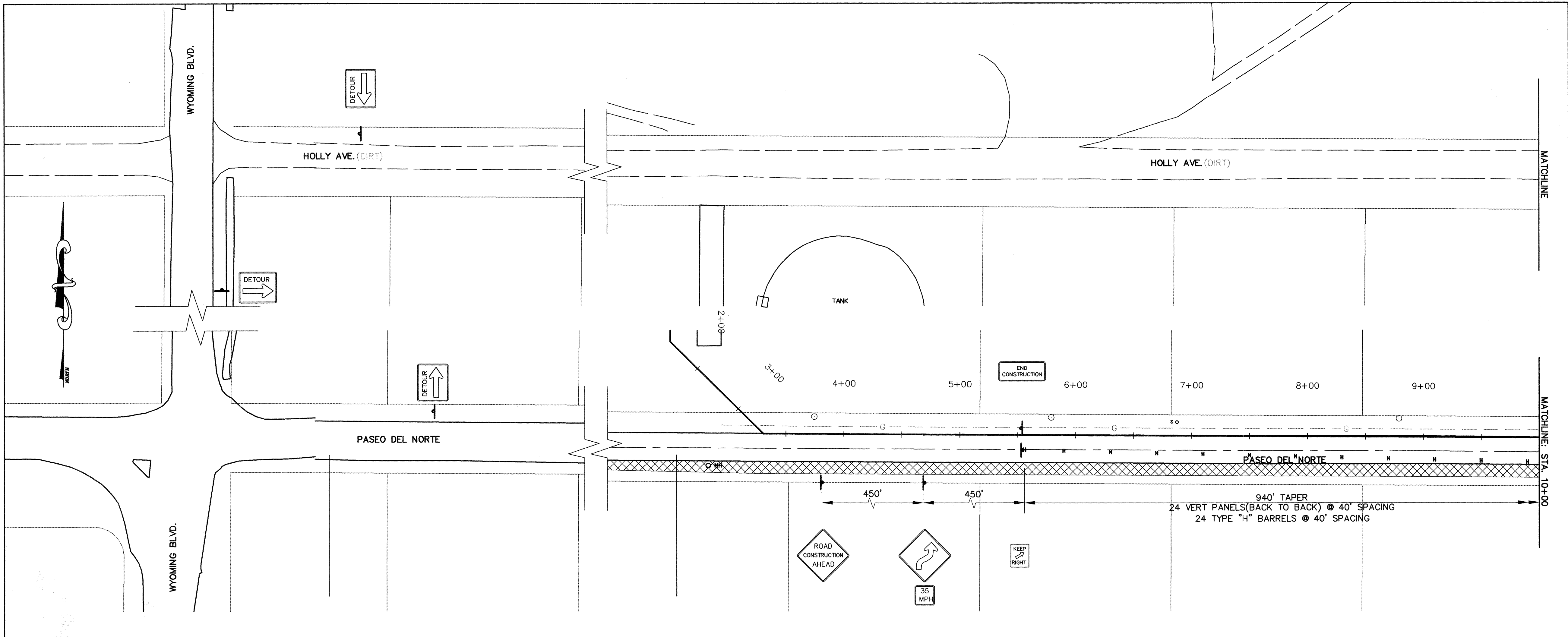
CITY OF ALBUQUERQUE
PUBLIC WORKS DEPARTMENT
TRANSPORTATION DEVELOPMENT

TITLE:	WEBSTER PUMP STATION WATER TRANSMISSION LINE CONSTRUCTION SEQUENCING
--------	--



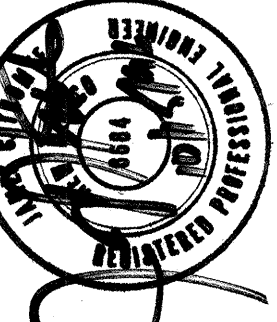
MO./DAY/YR.	MO./DAY/YR.

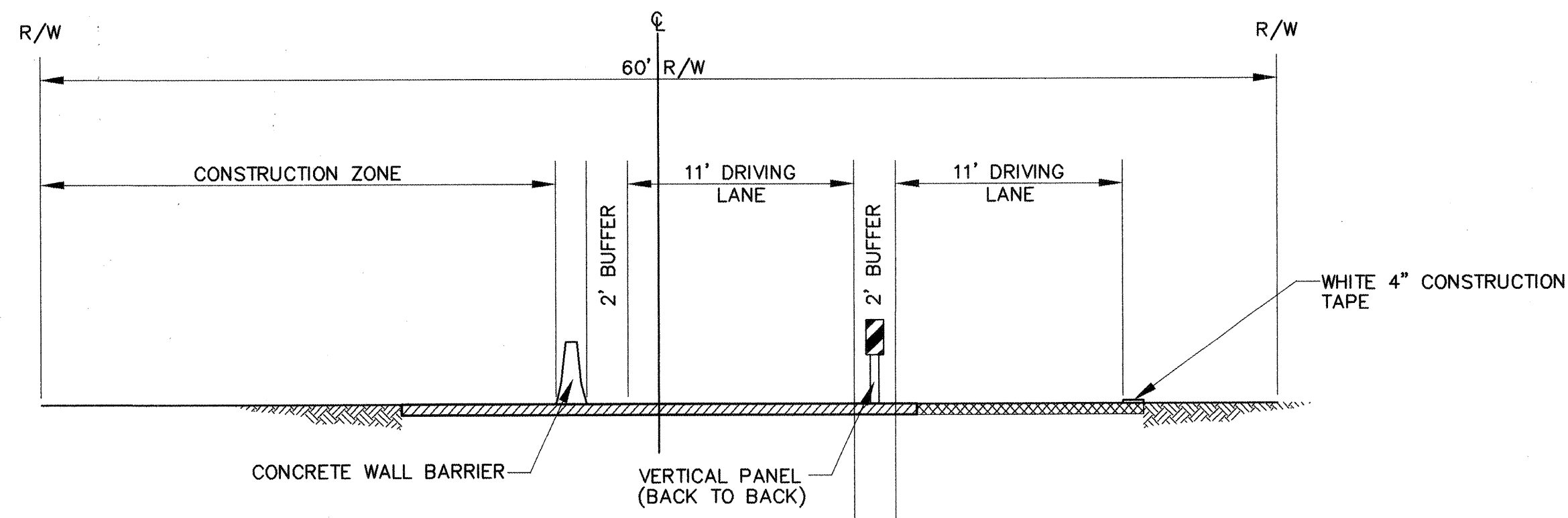
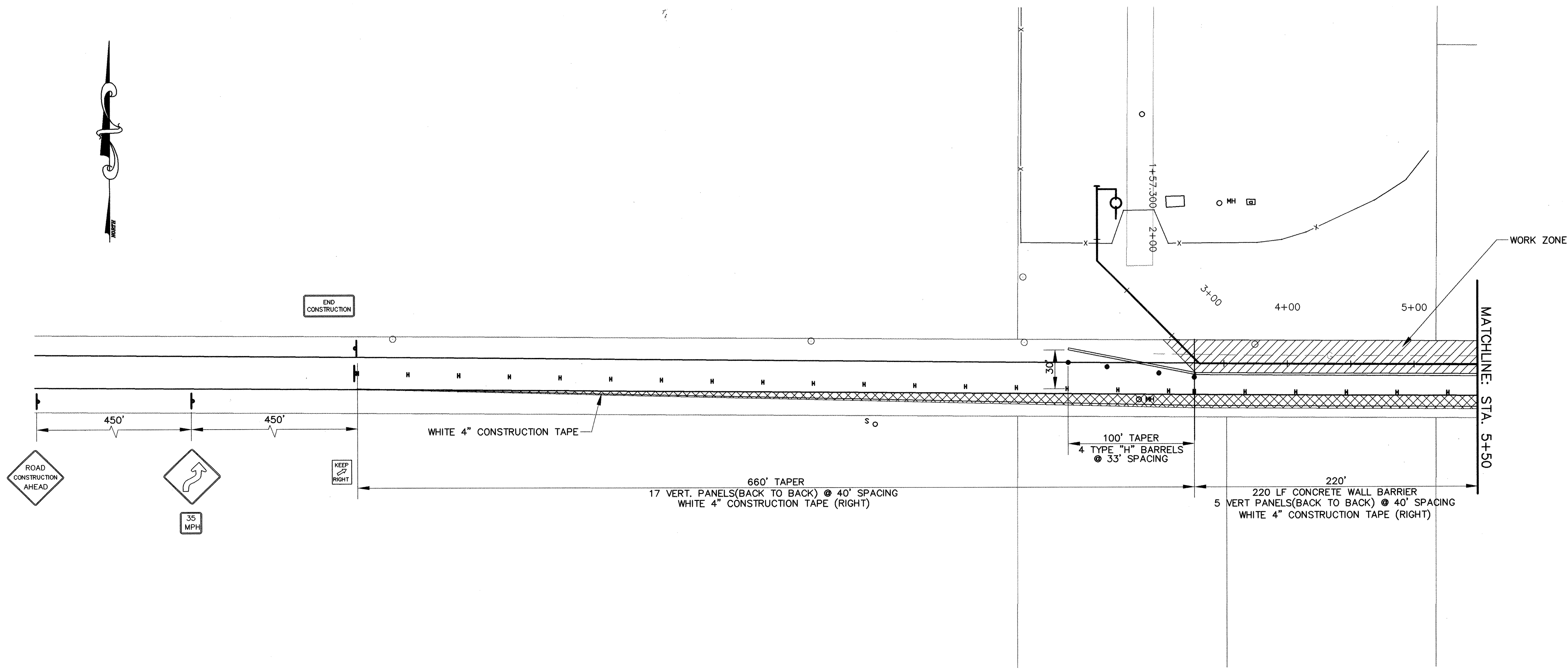
City Project No.	4536.91	Zone Map No.	C-19	Sheet	5	Of	11
------------------	---------	--------------	------	-------	---	----	----



AVID ENGINEERING, INC.
Civil • Structural • Transportation
5801 Osuna Rd. NE - Suite 200
Albuquerque, NM 87109 - (505) 881-5357

CITY OF ALBUQUERQUE PUBLIC WORKS DEPARTMENT TRANSPORTATION DEVELOPMENT		MO./DAY/YR.	
TITLE: WEBSTER PUMP STATION WATER TRANSMISSION LINE TRAFFIC CONTROL - PHASE II		MO./DAY/YR.	
DESIGN REVIEW COMMITTEE APPROVED DEC 10 1996	CITY ENGINEER APPROVAL APPROVED MAR 4 1997 CITY ENGINEER		
City Project No. 4536.91	Zone Map No. C-19	Sheet 7	Of 11

ENGINEER'S SEAL		SURVEY INFORMATION		BENCH MARKS		AS-BUILT INFORMATION	
	REMARKS	NO.	BY	DATE	CONTRACTOR	DATE	NO.
	DESIGN				STANDARD	DATE	
	DRAWN BY				INSPECTOR'S	DATE	
	CHECKED BY				FIELD	DATE	
MICRO-FILM INFORMATION				MICRO-FILM INFORMATION			
DESIGNED BY				RECORDED BY			
DATE				DATE			
DRAWN BY				NO.			
DATE							
CHECKED BY							
DATE							

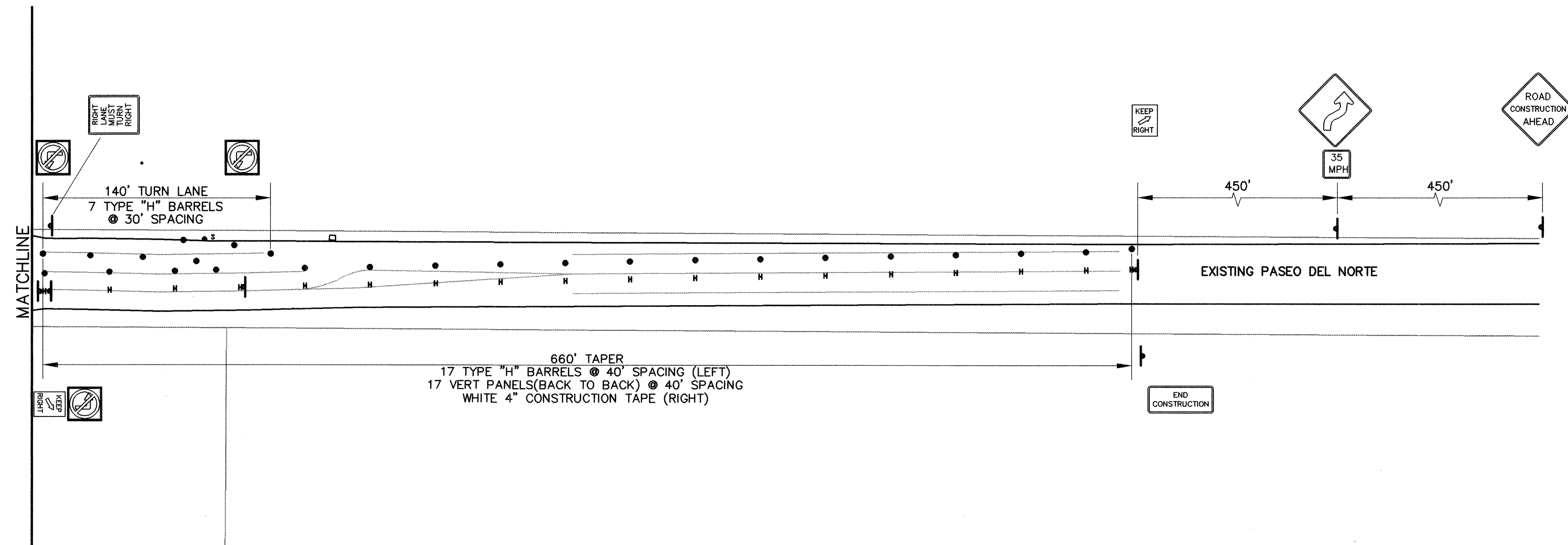
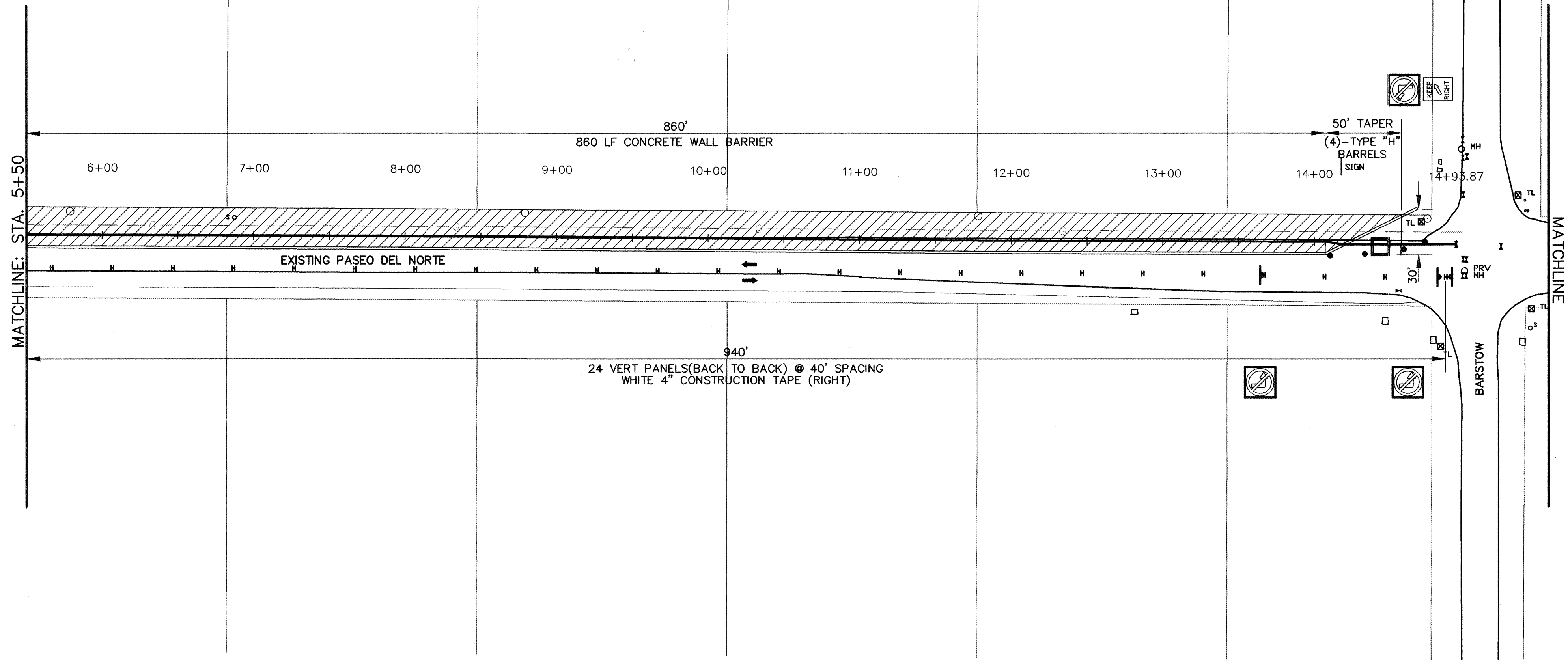


PHASE 3 - TYPICAL SECTION

AVID ENGINEERING, INC.
Civil • Structural • Transportation
5801 Osuna Rd. NE - Suite 200
Albuquerque, NM 87109 - (505) 881-5357

CITY OF ALBUQUERQUE PUBLIC WORKS DEPARTMENT TRANSPORTATION DEVELOPMENT	
TITLE: WEBSTER PUMP STATION WATER TRANSMISSION LINE TRAFFIC CONTROL - PHASE III	
DESIGN REVIEW COMMITTEE APPROVED DEC 10 1997 DESIGN REVIEW COMMITTEE	CITY ENGINEER APPROVAL APPROVED MAR 4 1997 CITY ENGINEER
City Project No. 4536.91	Zone Map No. C-19
Sheet 8	Of 11

--	--	--	--	--	--	--	--	--	--	--	--	--	--	--	--	--	--	--	--	--	--	--	--	--	--	--	--	--	--	--	--	--	--	--	--	--	--	--	--	--	--	--	--	--	--	--	--	--	--	--	--	--	--	--	--	--	--	--	--	--	--	--	--	--	--	--	--	--	--	--	--	--	--	--	--	--	--	--	--	--	--	--	--	--	--	--	--	--	--	--	--	--	--	--	--	--	--	--	--	--	--	--	--	--	--	--	--	--	--	--	--	--	--	--	--	--	--	--	--	--	--	--	--	--	--	--	--	--	--	--	--	--	--	--	--	--	--	--	--	--	--	--	--	--	--	--	--	--	--	--	--	--	--	--	--	--	--	--	--	--	--	--	--	--	--	--	--	--	--	--	--	--	--	--	--	--	--	--	--	--	--	--	--	--	--	--	--	--	--	--	--	--	--	--	--	--	--	--	--	--	--	--	--	--	--	--	--	--	--	--	--	--	--	--	--	--	--	--	--	--	--	--	--	--	--	--	--	--	--	--	--	--	--	--	--	--	--	--	--	--	--	--	--	--	--	--	--	--	--	--	--	--	--	--	--	--	--	--	--	--	--	--	--	--	--	--	--	--	--	--	--	--	--	--	--	--	--	--	--	--	--	--	--	--	--	--	--	--	--	--	--	--	--	--	--	--	--	--	--	--	--	--	--	--	--	--	--	--	--	--	--	--	--	--	--	--	--	--	--	--	--	--	--	--	--	--	--	--	--	--	--	--	--	--	--	--	--	--	--	--	--	--	--	--	--	--	--	--	--	--	--	--	--	--	--	--	--	--	--	--	--	--	--	--	--	--	--	--	--	--	--	--	--	--	--	--	--	--	--	--	--	--	--	--	--	--	--	--	--	--	--	--	--	--	--	--	--	--	--	--	--	--	--	--	--	--	--	--	--	--	--	--	--	--	--	--	--	--	--	--	--	--	--	--	--	--	--	--	--	--	--	--	--	--	--	--	--	--	--	--	--	--	--	--	--	--	--	--	--	--	--	--	--	--	--	--	--	--	--	--	--	--	--	--	--	--	--	--	--	--	--	--	--	--	--	--	--	--	--	--	--	--	--	--	--	--	--	--	--	--	--	--	--	--	--	--	--	--	--	--	--	--	--	--	--	--	--	--	--	--	--	--	--	--	--	--	--	--	--	--	--	--	--	--	--	--	--	--	--	--	--	--	--	--	--	--	--	--	--	--	--	--	--	--	--	--	--	--	--	--	--	--	--	--	--	--	--	--	--	--	--	--	--	--	--	--	--	--	--	--	--	--	--	--	--	--	--	--	--	--	--	--	--	--	--	--	--	--	--	--	--	--	--	--	--	--	--	--	--	--	--	--	--	--	--	--	--	--	--	--	--	--	--	--	--	--	--	--	--	--	--	--	--	--	--	--	--	--	--	--	--	--	--	--	--	--	--	--	--	--	--	--	--	--	--	--	--	--	--	--	--	--	--	--	--	--	--	--	--	--	--	--	--	--	--	--	--	--	--	--	--	--	--	--	--	--	--	--	--	--	--	--	--	--	--	--	--	--	--	--	--	--	--	--	--	--	--	--	--	--	--	--	--	--	--	--	--	--	--	--	--	--	--	--	--	--	--	--	--	--	--	--	--	--	--	--	--	--	--	--	--	--	--	--	--	--	--	--	--	--	--	--	--	--	--	--	--	--	--	--	--	--	--	--	--	--	--	--	--	--	--	--	--	--	--	--	--	--	--	--	--	--	--	--	--	--	--	--	--	--	--	--	--	--	--	--	--	--	--	--	--	--	--	--	--	--	--	--	--	--	--	--	--	--	--	--	--	--	--	--	--	--	--	--	--	--	--	--	--	--	--	--	--	--	--	--	--	--	--	--	--	--	--	--	--	--	--	--	--	--	--	--	--	--	--	--	--	--	--	--	--	--	--	--	--	--	--	--	--	--	--	--	--	--	--	--	--	--	--	--	--	--	--	--	--	--	--	--	--	--	--	--	--	--	--	--	--	--	--	--	--	--	--	--	--	--	--	--	--	--	--	--	--	--	--	--	--	--	--	--	--	--	--	--	--	--	--	--	--	--	--	--	--	--	--	--	--	--	--	--	--	--	--	--	--	--	--	--	--	--	--	--	--	--	--	--	--	--	--	--	--	--	--	--	--	--	--	--	--	--	--	--	--	--	--	--	--	--	--	--	--	--	--	--	--	--	--	--	--	--	--	--	--	--	--	--	--	--	--	--	--	--	--	--	--	--	--	--	--	--	--	--	--	--	--	--	--	--	--	--	--	--	--	--	--	--	--	--	--	--	--	--	--	--	--	--	--	--	--	--	--	--	--	--	--	--	--	--	--	--	--	--	--	--	--	--	--	--	--	--	--	--	--	--	--	--	--	--	--	--	--	--	--	--	--	--	--	--	--	--	--	--	--	--	--	--	--	--	--	--	--	--	--	--	--	--	--	--	--	--	--	--	--	--	--	--	--	--	--	--	--	--	--	--	--	--	--	--	--	--	--	--	--	--	--	--	--	--	--	--	--	--	--	--	--	--	--	--	--	--	--	--	--	--	--	--	--	--	--	--	--	--	--	--	--	--	--	--	--	--	--	--	--	--	--	--	--	--	--	--	--	--	--	--	--	--	--	--	--	--	--	--	--	--	--	--	--	--	--	--	--	--	--	--	--	--	--	--	--	--	--	--	--	--	--	--	--	--	--	--	--	--	--	--	--	--	--	--	--	--	--	--	--	--	--	--	--	--	--	--	--	--	--	--	--	--	--	--	--	--	--	--	--	--	--	--	--	--	--	--	--	--	--	--	--	--	--	--	--	--	--	--	--	--	--	--	--	--	--	--	--	--	--	--	--	--	--	--	--	--	--	--	--	--	--	--	--	--	--	--	--	--	--	--	--	--	--	--	--	--	--	--	--	--	--	--	--	--	--	--	--	--	--	--	--	--	--	--	--	--	--	--	--	--	--	--	--	--	--	--	--	--	--	--	--	--	--	--	--	--	--	--	--	--	--	--	--	--	--	--	--	--	--	--	--	--	--	--	--	--	--	--	--	--	--	--	--	--	--	--	--	--	--	--	--	--	--	--	--	--	--	--	--	--	--	--	--	--	--	--	--	--	--	--	--	--	--	--	--	--	--	--	--	--	--	--	--	--	--	--	--	--	--	--	--	--	--	--	--	--	--	--	--	--	--	--	--	--	--	--	--	--	--	--	--	--	--	--	--	--	--	--	--	--	--	--	--	--	--	--	--	--	--	--	--	--	--	--	--	--	--	--	--	--	--	--	--	--	--	--	--	--	--	--	--	--	--	--	--	--	--	--	--	--	--	--	--	--	--	--	--	--	--	--	--	--	--	--	--	--	--	--	--	--	--	--	--	--	--	--	--	--	--	--	--	--	--	--	--	--	--	--	--	--	--	--	--	--	--	--	--	--	--	--	--	--	--	--	--	--	--	--	--	--	--	--	--	--	--	--	--	--	--	--	--	--	--	--	--	--	--	--	--	--	--	--	--	--	--	--	--	--	--	--	--	--	--	--	--	--	--	--	--	--	--	--	--	--	--	--	--	--	--	--	--	--	--	--	--	--	--	--	--	--	--	--	--	--	--	--	--	--	--	--	--	--	--	--	--	--	--	--	--	--	--	--	--	--	--	--	--	--	--	--	--	--	--	--	--	--	--	--	--	--	--	--	--	--	--	--	--	--	--	--



AVID ENGINEERING, INC.
Civil • Structural • Transportation
5801 Osuna Rd. NE - Suite 200
Albuquerque, NM 87109 - (505) 881-5357

																																																																																																																																																																																																																																																																																																																																																																																																																																																																																																																																																																																																																																																																																																																																																																																																																																																																																																																																																																																																																																																																																																																																																																																																																																																																																																																																																																																																																																																																																																																																																																																																																																																							</
--	--	--	--	--	--	--	--	--	--	--	--	--	--	--	--	--	--	--	--	--	--	--	--	--	--	--	--	--	--	--	--	--	--	--	--	--	--	--	--	--	--	--	--	--	--	--	--	--	--	--	--	--	--	--	--	--	--	--	--	--	--	--	--	--	--	--	--	--	--	--	--	--	--	--	--	--	--	--	--	--	--	--	--	--	--	--	--	--	--	--	--	--	--	--	--	--	--	--	--	--	--	--	--	--	--	--	--	--	--	--	--	--	--	--	--	--	--	--	--	--	--	--	--	--	--	--	--	--	--	--	--	--	--	--	--	--	--	--	--	--	--	--	--	--	--	--	--	--	--	--	--	--	--	--	--	--	--	--	--	--	--	--	--	--	--	--	--	--	--	--	--	--	--	--	--	--	--	--	--	--	--	--	--	--	--	--	--	--	--	--	--	--	--	--	--	--	--	--	--	--	--	--	--	--	--	--	--	--	--	--	--	--	--	--	--	--	--	--	--	--	--	--	--	--	--	--	--	--	--	--	--	--	--	--	--	--	--	--	--	--	--	--	--	--	--	--	--	--	--	--	--	--	--	--	--	--	--	--	--	--	--	--	--	--	--	--	--	--	--	--	--	--	--	--	--	--	--	--	--	--	--	--	--	--	--	--	--	--	--	--	--	--	--	--	--	--	--	--	--	--	--	--	--	--	--	--	--	--	--	--	--	--	--	--	--	--	--	--	--	--	--	--	--	--	--	--	--	--	--	--	--	--	--	--	--	--	--	--	--	--	--	--	--	--	--	--	--	--	--	--	--	--	--	--	--	--	--	--	--	--	--	--	--	--	--	--	--	--	--	--	--	--	--	--	--	--	--	--	--	--	--	--	--	--	--	--	--	--	--	--	--	--	--	--	--	--	--	--	--	--	--	--	--	--	--	--	--	--	--	--	--	--	--	--	--	--	--	--	--	--	--	--	--	--	--	--	--	--	--	--	--	--	--	--	--	--	--	--	--	--	--	--	--	--	--	--	--	--	--	--	--	--	--	--	--	--	--	--	--	--	--	--	--	--	--	--	--	--	--	--	--	--	--	--	--	--	--	--	--	--	--	--	--	--	--	--	--	--	--	--	--	--	--	--	--	--	--	--	--	--	--	--	--	--	--	--	--	--	--	--	--	--	--	--	--	--	--	--	--	--	--	--	--	--	--	--	--	--	--	--	--	--	--	--	--	--	--	--	--	--	--	--	--	--	--	--	--	--	--	--	--	--	--	--	--	--	--	--	--	--	--	--	--	--	--	--	--	--	--	--	--	--	--	--	--	--	--	--	--	--	--	--	--	--	--	--	--	--	--	--	--	--	--	--	--	--	--	--	--	--	--	--	--	--	--	--	--	--	--	--	--	--	--	--	--	--	--	--	--	--	--	--	--	--	--	--	--	--	--	--	--	--	--	--	--	--	--	--	--	--	--	--	--	--	--	--	--	--	--	--	--	--	--	--	--	--	--	--	--	--	--	--	--	--	--	--	--	--	--	--	--	--	--	--	--	--	--	--	--	--	--	--	--	--	--	--	--	--	--	--	--	--	--	--	--	--	--	--	--	--	--	--	--	--	--	--	--	--	--	--	--	--	--	--	--	--	--	--	--	--	--	--	--	--	--	--	--	--	--	--	--	--	--	--	--	--	--	--	--	--	--	--	--	--	--	--	--	--	--	--	--	--	--	--	--	--	--	--	--	--	--	--	--	--	--	--	--	--	--	--	--	--	--	--	--	--	--	--	--	--	--	--	--	--	--	--	--	--	--	--	--	--	--	--	--	--	--	--	--	--	--	--	--	--	--	--	--	--	--	--	--	--	--	--	--	--	--	--	--	--	--	--	--	--	--	--	--	--	--	--	--	--	--	--	--	--	--	--	--	--	--	--	--	--	--	--	--	--	--	--	--	--	--	--	--	--	--	--	--	--	--	--	--	--	--	--	--	--	--	--	--	--	--	--	--	--	--	--	--	--	--	--	--	--	--	--	--	--	--	--	--	--	--	--	--	--	--	--	--	--	--	--	--	--	--	--	--	--	--	--	--	--	--	--	--	--	--	--	--	--	--	--	--	--	--	--	--	--	--	--	--	--	--	--	--	--	--	--	--	--	--	--	--	--	--	--	--	--	--	--	--	--	--	--	--	--	--	--	--	--	--	--	--	--	--	--	--	--	--	--	--	--	--	--	--	--	--	--	--	--	--	--	--	--	--	--	--	--	--	--	--	--	--	--	--	--	--	--	--	--	--	--	--	--	--	--	--	--	--	--	--	--	--	--	--	--	--	--	--	--	--	--	--	--	--	--	--	--	--	--	--	--	--	--	--	--	--	--	--	--	--	--	--	--	--	--	--	--	--	--	--	--	--	--	--	--	--	--	--	--	--	--	--	--	--	--	--	--	--	--	--	--	--	--	--	--	--	--	--	--	--	--	--	--	--	--	--	--	--	--	--	--	--	--	--	--	--	--	--	--	--	--	--	--	--	--	--	--	--	--	--	--	--	--	--	--	--	--	--	--	--	--	--	--	--	--	--	--	--	--	--	--	--	--	--	--	--	--	--	--	--	--	--	--	--	--	--	--	--	--	--	--	--	--	--	--	--	--	--	--	--	--	--	--	--	--	--	--	--	--	--	--	--	--	--	--	--	--	--	--	--	--	--	--	--	--	--	--	--	--	--	--	--	--	--	--	--	--	--	--	--	--	--	--	--	--	--	--	--	--	--	--	--	--	--	--	--	--	--	--	--	--	--	--	--	--	--	--	--	--	--	--	--	--	--	--	--	--	--	--	--	--	--	--	--	--	--	--	--	--	--	--	--	--	--	--	--	--	--	--	--	--	--	--	--	--	--	--	--	--	--	--	--	--	--	--	--	--	--	--	--	--	--	--	--	--	--	--	--	--	--	--	--	--	--	--	--	--	--	--	--	--	--	--	--	--	--	--	--	--	--	--	--	--	--	--	--	--	--	--	--	--	--	--	--	--	--	--	--	--	--	--	--	--	--	--	--	--	--	--	--	--	--	--	--	--	--	--	--	--	--	--	--	--	--	--	--	--	--	--	--	--	--	--	--	--	--	--	--	--	--	--	--	--	--	--	--	--	--	--	--	--	--	--	--	--	--	--	--	--	--	--	--	--	--	--	--	--	--	--	--	--	--	--	--	--	--	--	--	--	--	--	--	--	--	--	--	--	--	--	--	--	--	--	--	--	--	--	--	--	--	--	--	--	--	--	--	--	--	--	--	--	--	--	--	--	--	--	--	--	--	--	--	--	--	--	--	--	--	--	--	--	--	--	--	--	--	--	--	--	--	--	--	--	--	--	--	--	--	--	--	--	--	--	--	--	--	--	--	--	--	--	--	--	--	--	--	--	--	--	--	--	--	--	--	--	--	--	--	--	--	--	--	--	--	--	--	--	--	--	--	--	--	--	--	--	--	--	--	--	--	--	--	--	--	--	--	--	--	--	--	--	--	--	--	--	--	--	--	--	--	--	--	--	--	--	--	--	--	--	--	--	--	--	--	--	--	--	--	--	--	--	--	--	--	--	--	--	--	--	--	--	--	--	--	--	--	--	--	--	----

CITY OF ALBUQUERQUE
PUBLIC WORKS DEPARTMENT
TRANSPORTATION DEVELOPMENT

TITLE:
WEBSTER PUMP STATION
WATER TRANSMISSION LINE
TRAFFIC CONTROL - PHASE III

DESIGN REVIEW COMMITTEE
APPROVED
DEC 10 1996

CITY ENGINEER APPROVAL
APPROVED
MAR 4 1997

MO./DAY/YR.
MO./DAY/YR.

City Project No. 4536.91

Zone Map No. C-19

Sheet 9 Of 11

CONSTRUCTION TRAFFIC CONTROL GENERAL NOTES

1. CONTRACTOR MUST OBTAIN FROM CONSTRUCTION COORDINATION AN EXCAVATION/BARRICADING PERMIT BEFORE ENGAGING IN ANY CONSTRUCTION, MAINTENANCE OR REPAIR WORK IN ANY OF THE CITY OF ALBUQUERQUE'S RIGHTS-OF-WAY. EMERGENCY WORK THAT WOULD PRESERVE LIFE OR PROPERTY IS EXCLUDED WITH THE UNDERSTANDING THAT A PERMIT SHALL BE OBTAINED WITHIN 24 TO 48 HOURS.
2. CONTRACTOR SHALL AT THE TIME OF PERMIT REQUEST, SUBMIT FOR APPROVAL BY CONSTRUCTION COORDINATION, A TRAFFIC CONTROL PLAN DETAILING ALL EXISTING TOPOGRAPHY SUCH AS LANE WIDTHS, DRIVEWAYS, AND BUSINESS/RESIDENTIAL ACCESSES. THE TRAFFIC CONTROL PLAN SHALL INCLUDE ALL PHASES OF WORK AND SCHEDULES INVOLVED IN THE CONSTRUCTION PROJECT. ANY SEPARATE PHASES OF A CONSTRUCTION PROJECT SHALL BE GIVEN AN INDIVIDUAL PERMIT EACH. BLANKET PERMITS WILL NOT BE ISSUED.
3. THESE TYPICAL TRAFFIC CONTROL PLANS DO NOT REFLECT THE EXISTING TOPOGRAPHY SUCH AS DRIVEWAYS, LANE WIDTHS, AND BUSINESS/RESIDENTIAL ACCESSES. EVERY LOCATION THAT REQUIRES CONSTRUCTION TRAFFIC CONTROL SHALL HAVE A DETAILED TRAFFIC CONTROL PLAN SHOWING ALL EXISTING TOPOGRAPHY.
4. CONSTRUCTION SHALL NOT BEGIN UNLESS A TRAFFIC CONTROL PLAN HAS BEEN APPROVED AND VERIFIED BY CONSTRUCTION COORDINATION.
5. CONSTRUCTION COORDINATION SHALL BE NOTIFIED 48 HOURS PRIOR TO ANY TRAFFIC CONTROL CHANGES NEEDED BY CONTRACTOR, THAT WERE NOT PREVIOUSLY APPROVED. THESE TRAFFIC CONTROL CHANGES SHALL BE REQUESTED IN WRITING ACCOMPANIED WITH A TRAFFIC CONTROL PLAN REFLECTING SUCH CHANGES.
6. ALL CONSTRUCTION TRAFFIC CONTROL DEVICES SHALL COMPLY TO THE MANUAL ON UNIFORM TRAFFIC CONTROL DEVICES (MUTCD), LATEST EDITION. IT IS THE RESPONSIBILITY OF THE CONTRACTOR TO INSTALL, SERVICE AND MAINTAIN ALL TRAFFIC CONTROL DEVICES. TRAFFIC CONTROL DEVICES SHALL NOT BE REMOVED OR ALTERED IN ANY WAY WITHOUT THE APPROVAL OF CONSTRUCTION COORDINATION, PER SECTION 6A-4 OF THE MUTCD, LATEST EDITION.
7. THE CONSTRUCTION TRAFFIC CONTROL INITIAL SET-UP SHALL BE BY AN AMERICAN TRAFFIC SAFETY SERVICES ASSOCIATION (ATSSA) CERTIFIED WORKSITE TRAFFIC SUPERVISOR. THE MAINTENANCE AND SERVICING SHALL ALSO BE DONE BY AN ATSSA CERTIFIED WORKSITE TRAFFIC SUPERVISOR OR EQUIVALENT.
8. CONTRACTOR IS RESPONSIBLE TO MAINTAIN AND SERVICE ALL TRAFFIC CONTROL DEVICES 24 HOURS A DAY, 7 DAYS A WEEK THROUGHOUT LENGTH OF PROJECT. CONTRACTOR IS RESPONSIBLE THAT ALL TRAFFIC CONTROL DEVICES COMPLY WITH THE MUTCD, LATEST EDITION.
9. ALL ADVANCE WARNING SIGNS SHALL BE DOUBLE INDICATED WHENEVER THERE ARE MULTI-LANE TRAFFIC IN ANY ONE GIVEN DIRECTION AND THERE IS SUFFICIENT MEDIAN SPACE.
10. ALL BARRICADES IN ALL TAPERS AND TANGENTS SHALL BE PLACED APART, A DISTANCE MEASURED IN FEET, EQUAL TO THAT OF THE POSTED SPEED LIMIT. NO EXCEPTIONS UNLESS APPROVED BY CONSTRUCTION COORDINATION PER MUTCD SECTION 6A-4.
11. CONTRACTOR SHALL NOT BEGIN WORK BEFORE 7:00 A.M. OR END WORK AFTER 7:00 P.M. WITHOUT THE APPROVAL OF CONSTRUCTION COORDINATION.
12. CONTRACTOR IS RESPONSIBLE TO PROVIDE CONSTRUCTION COORDINATION, A WEEKLY LOG OF DAILY INSPECTIONS OF BARRICADE AND MAINTENANCE SCHEDULES ON PROJECTS THAT ARE OVER ONE WEEK DURATION.
13. EQUIPMENT OR MATERIALS SHALL NOT BE STORED WITHIN 15 FEET OF A TRAVELLED TRAFFIC LANE DURING NON-WORKING HOURS WITHOUT THE APPROVAL OF CONSTRUCTION COORDINATION.
14. CONTRACTOR SHALL PROVIDE AND MAINTAIN A SAFE AND ADEQUATE MEANS OF CHANNELIZING PEDESTRIAN TRAFFIC AROUND AND THROUGH THE CONSTRUCTION AREA.
15. CONTRACTOR IS RESPONSIBLE FOR OBLITERATION OF ANY CONFLICTING STRIPING AND RESPONSIBLE FOR ALL TEMPORARY STRIPING.
16. CONTRACTOR SHALL MAINTAIN ACCESS TO ALL FACILITIES, BUSINESSES AND/OR RESIDENTS AT ALL TIMES.
17. CONTRACTOR SHALL PROVIDE ACCESS SIGNS FOR BUSINESSES LOCATED WITHIN THE CONSTRUCTION AREA UNDER THE SUPERVISION OF CONSTRUCTION COORDINATION. EACH ACCESS SIGN SHALL HAVE 5 INCH, WHITE OPAQUE LETTERING ON BLUE REFLECTORIZED BACKGROUND. ACCESS SIGNS SHALL BE CONSIDERED INCIDENTAL TO THE BID AND NOT PART OF THE CONTRACT UNLESS OTHERWISE STATED. NO MORE THAN 3 BUSINESSES SHALL BE LISTED ON A ACCESS SIGN. SHOPPING CENTERS AND MALLS SHALL BE LISTED AS SUCH.
18. ALL ADVANCE WARNING SIGNS SHALL MEET THE MINIMUM REFLECTIVE INTENSITY REQUIREMENTS SET FORTH BY THE CITY OF ALBUQUERQUE. CONSTRUCTION COORDINATION SHALL DETERMINE ALL REQUIREMENTS AND APPROVE OR DISAPPROVE ANY ADVANCE WARNING SIGN PER SECTION 6A-4 OF THE MUTCD, LATEST EDITION.
19. 24 HOURS PRIOR TO OCCUPYING OR CLOSING OF A RIGHT-OF-WAY, CONTRACTOR SHALL NOTIFY: POLICE, FIRE DEPARTMENT, SCHOOLS, HOSPITALS, TRANSIT AUTHORITY, BUSINESSES AND/OR RESIDENTS THAT WILL BE AFFECTED BY THE CONSTRUCTION.
20. ANY FIELD ADJUSTMENTS SHALL BE APPROVED BY CONSTRUCTION COORDINATION.

21. EXCAVATIONS SHALL BE PLATED, TEMPORARILY PATCHED OR RESURFACED PRIOR TO OPENING OF TRAFFIC. A MINIMUM OF 11 FEET SHALL BE PROVIDED FOR TRAFFIC IN ANY GIVEN DIRECTION. CONTRACTOR IS RESPONSIBLE FOR ANY WORK INVOLVED IN SATISFYING THESE REQUIREMENTS.

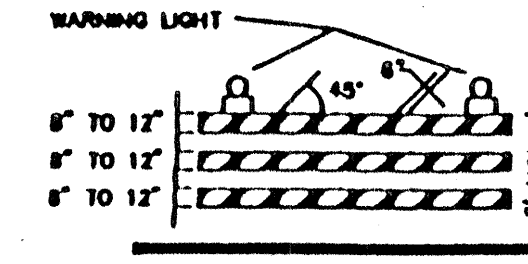
22. CONTRACTOR SHALL AT ALL TIMES COMPLY WITH THE FOLLOWING:
1. STANDARDS AND REQUIREMENTS SET FORTH IN THE MANUAL ON UNIFORM TRAFFIC CONTROL DEVICES, LATEST EDITION.
 2. THE CITY OF ALBUQUERQUE TRAFFIC CODE, LATEST EDITION.
 3. SECTION 19 OF THE CITY OF ALBUQUERQUE'S STANDARD SPECIFICATIONS FOR PUBLIC WORK CONSTRUCTION, AS WELL AS OTHER SECTIONS.

23. FAILURE TO COMPLY WITH ANY OF THE ABOVE MENTIONED, WILL BE ADEQUATE CAUSE TO CEASE ALL WORK ON ANY CONSTRUCTION PROJECT. WORK WILL NOT RESUME UNTIL ALL REQUIREMENTS ARE ADDRESSED AND APPROVED BY CONSTRUCTION COORDINATION.

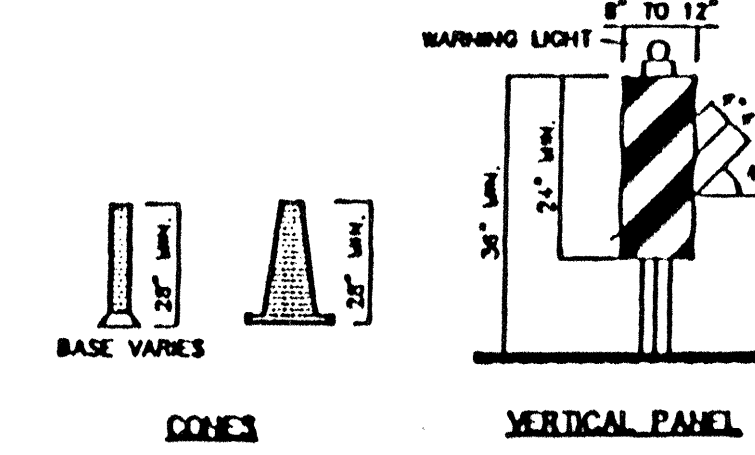
24. ALL TRAFFIC CONTROL DEVICES SHALL BE KEPT IN NEW-CLEAN CONDITION. WASHING OF EQUIPMENT IS INCIDENTAL TO ITS PLACEMENT AND MAINTENANCE.

25. TRAFFIC CONTROL STANDARDS APPLY ONLY WHERE THE CONSTRUCTION TRAFFIC CONTROL PLANS ARE NOT SPECIFIC.

26. ADVANCE WARNING SIGNS SHALL BE 36"x36" WITH SUPER ENGINEERING GRADE SHEETING OR BETTER.



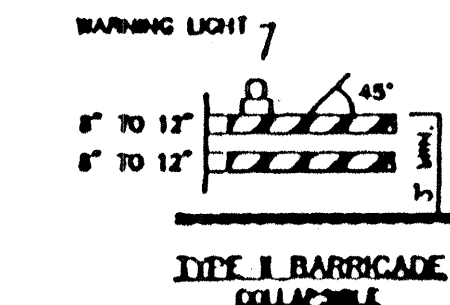
TYPE II BARRICADE



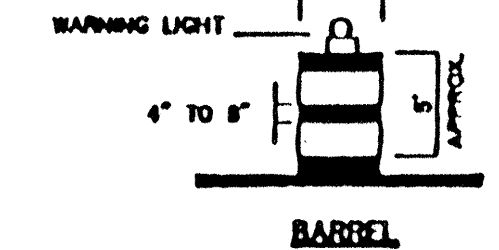
CONES

VERTICAL PANEL

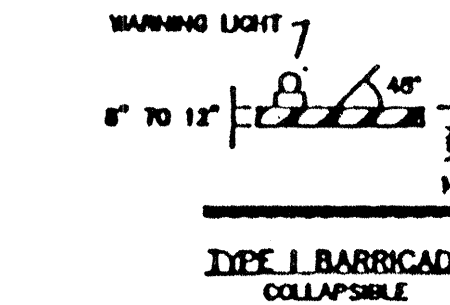
HIGH LEVEL WARNING DEVICE



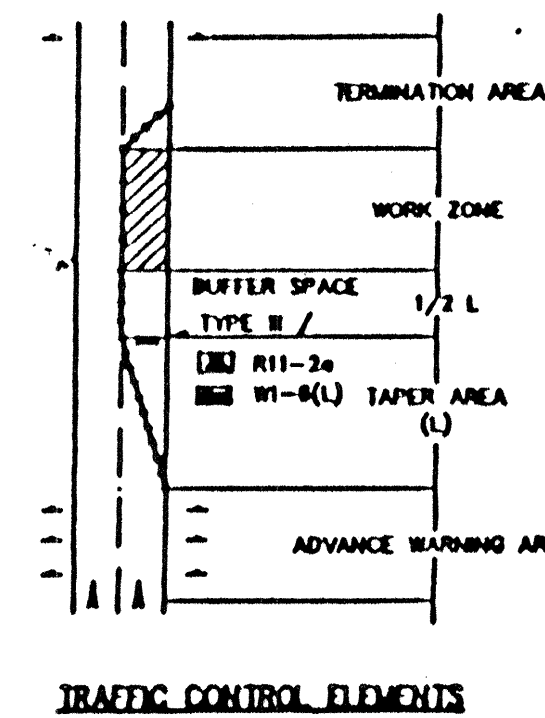
TYPE I BARRICADE



TYPE I BARRICADE



TYPE I BARRICADE



TRAFFIC CONTROL ELEMENTS

LEGEND

- WORK AREA
- BARRICADE - TYPE I, TYPE II, OR BARREL
- BARRICADE - TYPE III
- VERTICAL PANEL
- WARNING SIGN
- DISTANCE BETWEEN SIGNS - A DISTANCE MEASURED IN FEET EQUAL TO A VALUE OF TEN TIMES THE SPEED LIMIT OF THE STREET
- FLAGMAN POSITION
- SPACING BETWEEN BARRICADES - A DISTANCE MEASURED IN FEET EQUAL TO THE SPEED LIMIT OF THE STREET
- TAPER LENGTH - SEE CHART BELOW
- THE TANGENT LENGTH IS EQUAL TO THE TAPER LENGTH FOR A GIVEN STREET.

TAPER REQUIREMENTS

SPEED LIMIT (MPH)	TAPER LENGTH (L) (FEET)			MINIMUM NUMBER OF DEVICES FOR TAPER	MAXIMUM DEVICE SPACING IN FEET	
	10' LANE	11' LANE	12' LANE		ALONG TAPER	AFTER TAPER
20	70	75	80	5	20	20
25	105	115	125	6	25	25
30	150	165	180	7	30	30
35	205	225	245	8	35	35
40	270	295	320	9	40	40
45	450	495	540	13	45	45
50	500	550	600	13	50	50
55	550	605	660	13	55	55

RECOMMENDED SIGN SPACING(D) FOR ADVANCE WARNING SIGN SERIES

SPEED LIMIT (MPH)	MINIMUM DISTANCE IN FEET	
	BETWEEN SIGNS	FROM LAST SIGN TO TAPER
0-20	10 X SPEED LIMIT	10 X SPEED LIMIT
25-30	10 X SPEED LIMIT	10 X SPEED LIMIT
30-35	10 X SPEED LIMIT	10 X SPEED LIMIT
40-45	10 X SPEED LIMIT	10 X SPEED LIMIT
50-60	10 X SPEED LIMIT	10 X SPEED LIMIT

TAPER CRITERIA

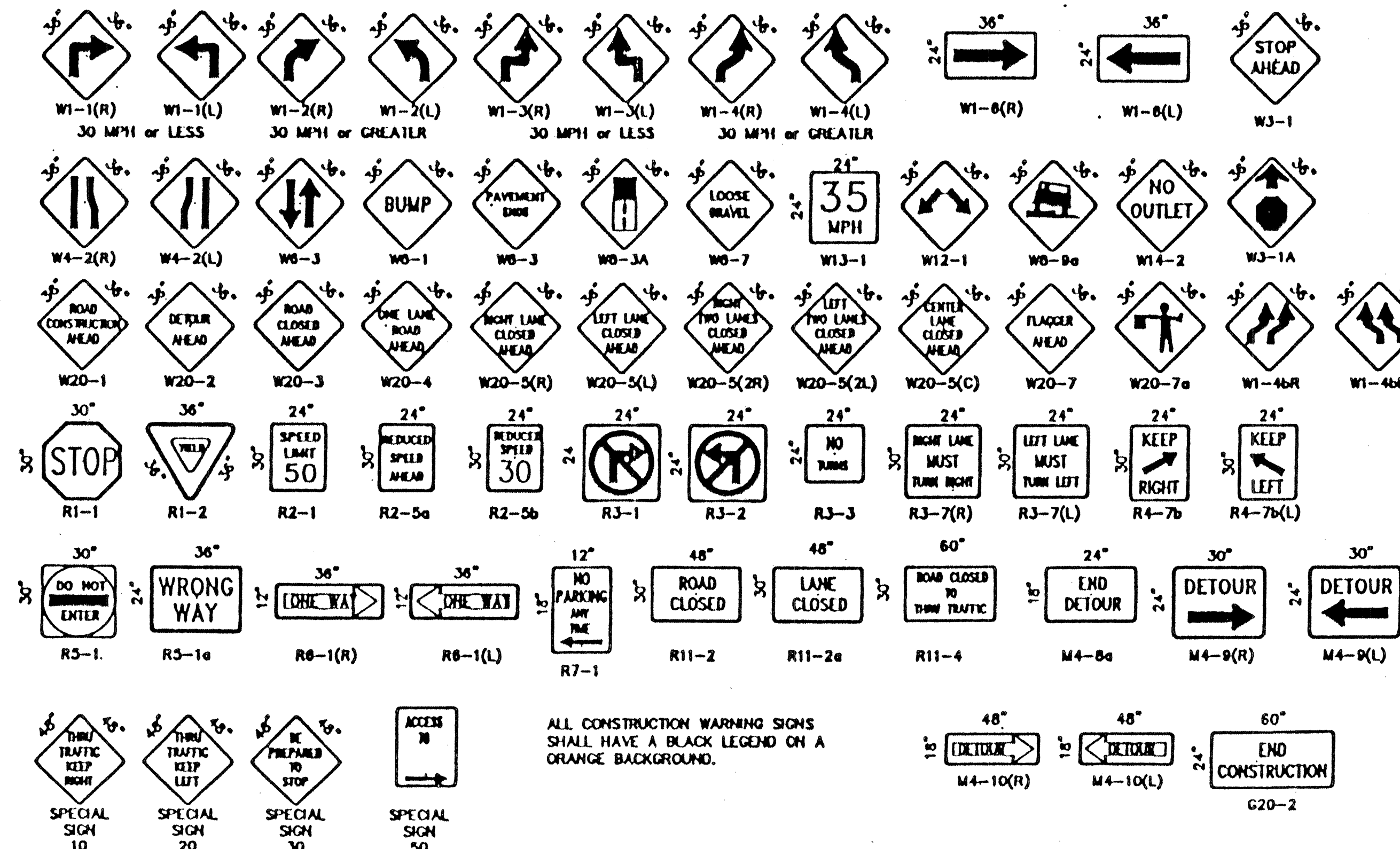
TYPE OF TAPER	TAPER LENGTH
UPSTREAM TAPER:	
MERGING TAPER	L MINIMUM
SHIFTING TAPER	1/2 L MINIMUM
SHOULDER TAPER	1/2 L MINIMUM
TWO-WAY TRAFFIC TAPER	100 FEET MAXIMUM
DOWNSIDE TAPERS	100 FEET PER LANE

TAPER LENGTH COMPUTATION

SPEED LIMIT	L = WS ² / 60
40 MPH OR LESS	L = WS ² / 60
45 MPH OR GREATER	L = W x S

L = TAPER LENGTH
W = WIDTH OF OFFSET IN FEET
S = POSTED SPEED OR OFF-PEAK 85-PERCENTILE SPEED IN MPH

SIGN FACE DETAILS



ALL CONSTRUCTION WARNING SIGNS SHALL HAVE A BLACK LEGEND ON A ORANGE BACKGROUND.

CITY OF ALBUQUERQUE PUBLIC WORKS DEPARTMENT ENGINEERING DEVELOPMENT GROUP			
TITLE: SIGNING AND CONSTRUCTION TRAFFIC CONTROL STANDARDS			
DESIGN REVIEW COMMITTEE	CITY ENGINEER APPROVAL	NO. DATE/TM	NO. DATE/TM
PROJECT NO. 4536.91	MAP NO. C-19	SHEET OF 10-11	

