





# ALAMOSA PARK PLAY AREA

A PORTION OF BLOCK 1  
OF THE MERLIDA ADDITION  
FILED OCT. 4, 1946 IN BOOK B1 FOLIO 113  
ALBUQUERQUE, NEW MEXICO  
ZONE ATLAS L-14  
DEC. 14, 1992

NOTE:  
WALTER WEAVER INC. HAS RECOMMENDED THE REMOVAL  
OF THIS SHELTER FOR STRUCTURAL REASONS. THE  
CITY OF ALBUQUERQUE STAFF HAS MADE THE DECISION  
TO KEEP THE SHELTER.

WALTER WEAVER INC. NOR ANY OF ITS EMPLOYEES CAN  
NOW OR IN THE FUTURE BE HELD LIABLE FOR ANY  
DAMAGE TO LIFE OR PROPERTY CAUSED BY THIS SHELTER.

INSTALL CONCRETE AS PER CITY  
STD. DTL. 2430.

RAMP SLOPE TO BE EVEN AND  
GRADUAL. SLOPE NOT TO  
EXCEED 5%.

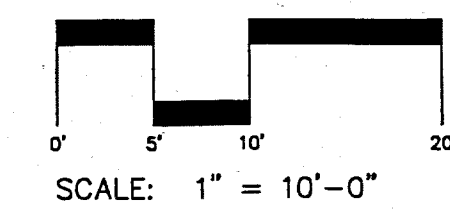
FILL AREA WITHIN WALK WITH SAND  
TO A DEPTH OF 12" WITH THE SAND  
SURFACE 2" BELOW TOP OF THE  
CONCRETE WALK

NOTE: ELEVATIONS IN SAND AREA  
DENOTE TOP SURFACE OF SAND

INSTALL CONC. TURNDOWN  
CURB AND SIDEWALK. SEE  
CITY STD. DETAILS 2728  
AND 2430.

NEW HARDSCAPE LAYOUT - TYP.

NOTE:  
ADJUST EXISTING ELEVATIONS NEAR  
SIDEWALK TO GRADUALLY MEET NEW  
GRADES. SLOPES NOT TO EXCEED  
4:1. SLOPES AROUND TREES NOT  
TO EXCEED 5:1.



**WALTER WEAVER INC.**  
LANDSCAPE ARCHITECTS / ENVIRONMENTAL PLANNERS / GOLF COURSE ARCHITECTS  
808 COPPER AVE NE SUITE 1000 ALBUQUERQUE, NEW MEXICO 87110 (505)243-3358

## REMOVAL KEY

- ① EXISTING SHELTER, STEEL POSTS, AND CONCRETE  
SLAB TO REMAIN. REMOVE EXISTING PICNIC TABLES.
- ② EXISTING BAR-B-QUE GRILLS AND CONC. PAD TO REMAIN.
- ③ REMOVE TRASH CAN AND PAD.
- ④ REMOVE WOOD SWINGSET. CONTACT PARK  
MANAGEMENT 857-8650 REGARDING SALVAGE OF  
SEATS.
- ⑤ REMOVE ALL WOOD POSTS. DISPOSE OF PROPERLY.
- ⑥ REMOVE CONCRETE CUT-OFF WALL.
- ⑦ REMOVE STUMP.
- ⑧ EXISTING TREE TO REMAIN. CONTRACTOR TO  
AVOID ANY DAMAGE TO TREE AND TREE ROOTS.  
NO GRADING TO TAKE PLACE BENEATH DRIPLINE  
OF TREE.
- ⑨ EXISTING PARKING AREA AND CURB TO REMAIN.
- ⑩ EXISTING CHAIN LINK FENCE TO REMAIN.
- ⑪ EXISTING SIGN TO REMAIN.
- ⑫ EXISTING WOOD POSTS TO REMAIN.
- ⑬ EXISTING SIDEWALK TO BE REMOVED.
- ⑭ REMOVE EXISTING SAND TO A DEPTH OF 14" FROM  
TOP OF NEW CONCRETE LEVEL. SEE SHEET 2 FOR  
ELEVATIONS. DISPOSE OF OLD SAND PROPERLY.
- ⑮ REMOVE IRRIGATION HEAD AND CAP LINE.

AS BUILT INFORMATION		BENCH MARK		FIELD NOTES		LANDSCAPE ARCHITECT'S SEAL SURVEY INFORMATION		BY		REVISIONS/REMARKS		NO. DATE	
CONTRACTOR	WORK STATED BY	DATE:	INSPECTORS APPROVAL	DATE:	FIELD VERIFICATION BY	DATE:	DRAWING CORRECTED BY	DATE:	MICRO-FILM INFORMATION	RECORDED BY	NO.	DESIGNED BY:	DATE:
												WALTER WEAVER INC.	7/22/94
												DRAWN BY:	DATE:
												WALTER WEAVER INC.	7/22/94
												CHECKED BY:	DATE:
												WALTER WEAVER INC.	7/22/94

1 2 3 4 5 6 7 8 9 10 11 12 13 14 15  
26-45678.90 10296

LEGEND:  
+ 11.00 EXISTING ELEVATION  
+ 11.00 PROPOSED ELEVATION

CONSTRUCTION DOCUMENTS  
CLASS II CONSTRUCTION  
PARKS AND RECREATION DEPARTMENT  
DESIGN AND DEVELOPMENT DIVISION

CITY OF ALBUQUERQUE  
PARKS AND RECREATION  
DESIGN AND DEVELOPMENT

TITLE: ALAMOSA PARK IMPROVEMENTS  
PHASE I REMOVAL, LAYOUT, & GRADING PLAN

APPROVALS	ENGINEER	DATE	APPROVALS	ENGINEER	DATE
DRC CHAIRMAN			WATER		
TRANSPORTATION			WASTE WATER		
HYDROLOGY					
PARKS AND REC.					

PROJECT NO. 4563.90 MAP NO. K-14 SHEET 2 OF 5



# IRRIGATION SCHEDULE

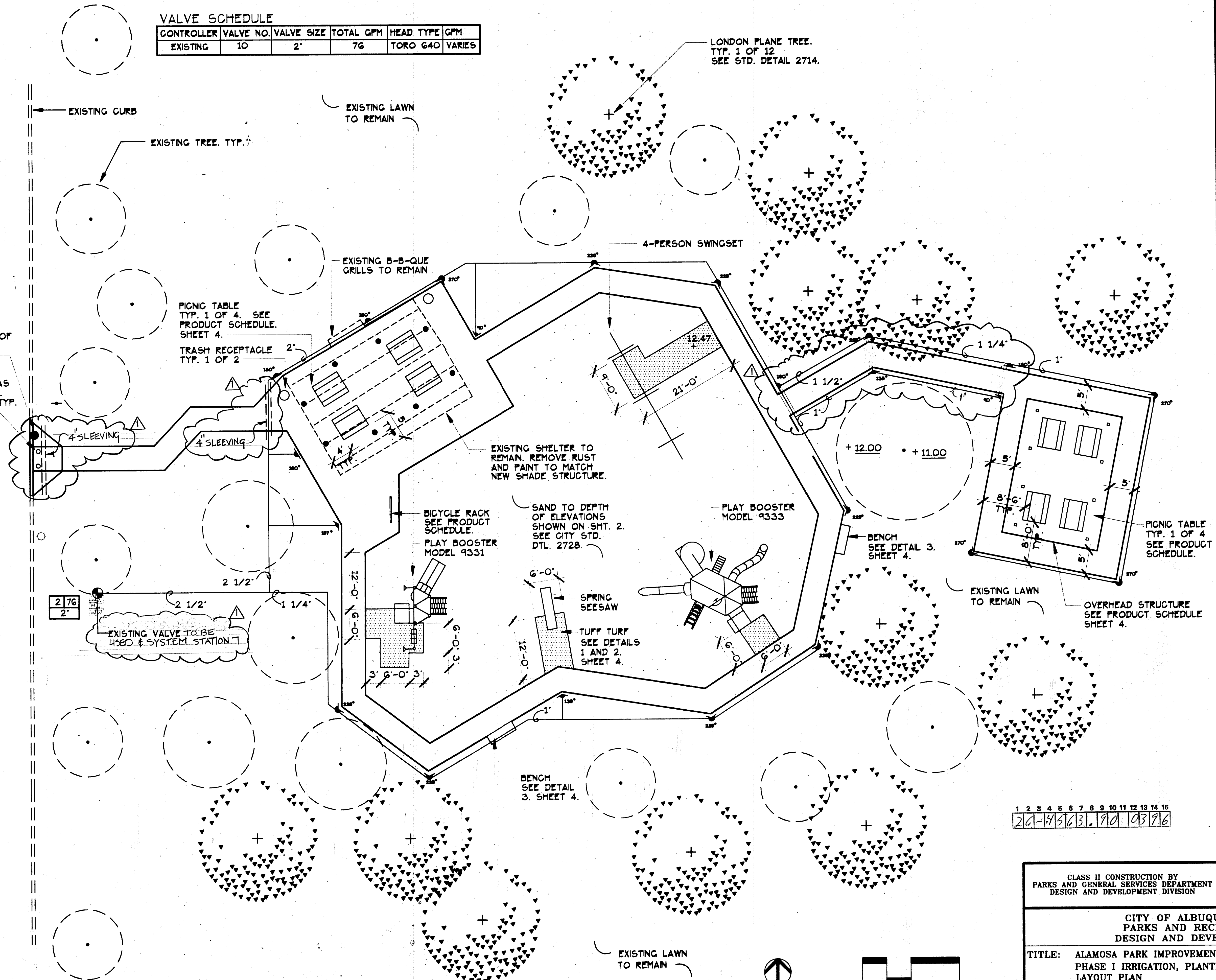
KEY	PRODUCT DESCRIPTION
⊕	RAINBIRD PEB SERIES AUTOMATIC VALVE SIZED PER PLAN W/ BROOKS PB-18 BODY (ABS) VALVE BOX
270°	TORO 312-00-03 SPRINKLER HEAD
225°	TORO 310-00-03 SPRINKLER HEAD
180°	TORO 307-00-03 SPRINKLER HEAD
135°	TORO 306-00-03 SPRINKLER HEAD
90°	TORO 305-00-03 SPRINKLER HEAD
45°	TORO 308-00-03 SPRINKLER HEAD
0°	TORO 304-00-03 SPRINKLER HEAD
---	SCHEDULE 40 PVC LATERAL LINE - 18" DP.
---	SCH 40 PVC SLEEVE 2X LARGER THAN LINE TO BE SLEEVED
1 1/2"	VALVE NUMBER
2"	GALLONS PER MINUTE FOR VALVE VALVE SIZE

KEY:  
+ 11.00 EXISTING ELEVATION  
+ 11.00 PROPOSED ELEVATION

- NOTES:
- SEE PRODUCT SCHEDULE, SHEET 4.  
FOR ALL PRODUCT SPECIFICATIONS.
  - RESOD ALL AREAS OF DISTURBANCE.  
SEE CITY OF ALBQ. STANDARD  
SPECIFICATIONS FOR SOIL PREP.  
TOP OF SOD TO BE 1 INCH BELOW  
TOP OF NEW CONCRETE SIDEWALK.

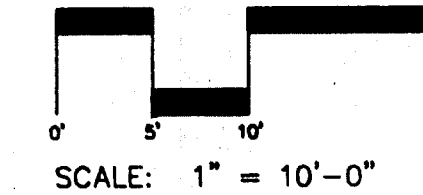
## VALVE SCHEDULE

CONTROLLER	VALVE NO.	VALVE SIZE	TOTAL GPM	HEAD TYPE	GPM
EXISTING	10	2"	76	TORO G40	VARIES



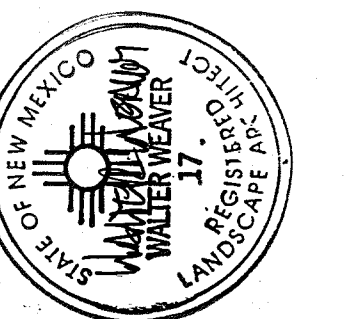
BATAAN S.W.

ALAMOSA PARK PLAY AREA  
A PORTION OF BLOCK 1  
OF THE MERLUJA ADDITION  
FILED OCT. 4, 1946 IN BOOK B1 FOLIO 113  
ALBUQUERQUE, NEW MEXICO  
ZONE ATLAS L-14  
DEC. 14, 1992



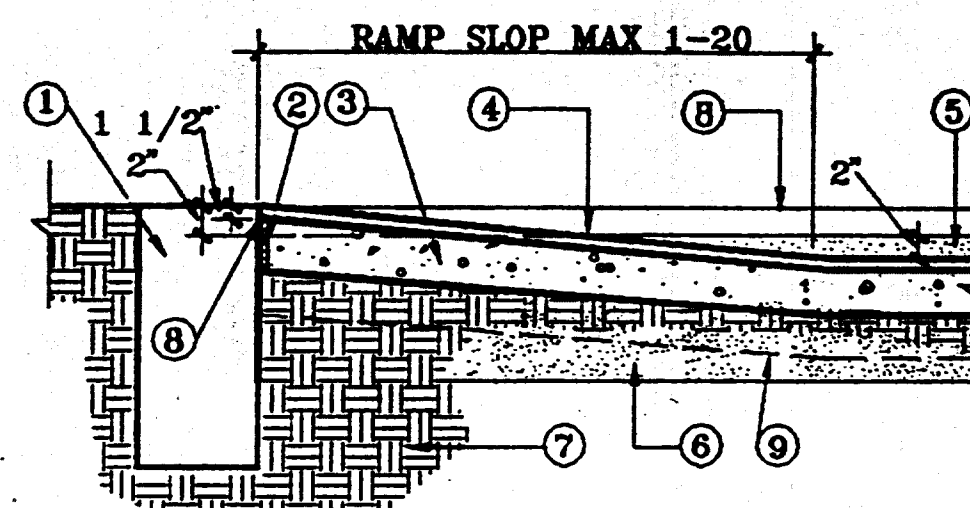
**WALTER WEAVER INC.**  
LANDSCAPE ARCHITECTS / ENVIRONMENTAL PLANNERS / GOLF COURSE ARCHITECTS  
800 COPPER AVE. SUITE 1000 ALBUQUERQUE, NEW MEXICO 87102 (505)243-3888

AS BUILT INFORMATION		BENCH MARK		SURVEY INFORMATION		FIELD NOTES		REVISIONS/REMARKS		DESIGNED BY: WW INC.		DRAWN BY: WW INC.		CHECKED BY: WW INC.	
CONTRACTOR	DATE:	A.C.S. CONTROL STATION '2-LIO, 1989'	DATE:	NO.	BY	NO.	BY	NO.	DATE:	DATE:	DATE:	DATE:	DATE:	DATE:	DATE:
WORK STAKED BY	DATE:	LOCATED IN THE TOP OF CURB IN A	DATE:												
INSPECTORS APPROVAL	DATE:	TRAFFIC ISLAND IN THE SOUTHEAST	DATE:												
FIELD VERIFICATION BY	DATE:	QUADRANT OF INTERSECTION OF BRIDGE	DATE:												
DRAWING CORRECTED BY	DATE:	AND COORS BLVD.	DATE:												
MICRO-FILM INFORMATION	DATE:														
RECORDED BY	NO.														



CITY OF ALBUQUERQUE PARKS AND RECREATION DESIGN AND DEVELOPMENT					
TITLE: ALAMOSA PARK IMPROVEMENTS PHASE I IRRIGATION, PLANTING, AND EQUIPMENT LAYOUT PLAN					
APPROVALS	ENGINEER	DATE	APPROVALS	ENGINEER	DATE
DRC CHAIRMAN	B. J. Bailey	8-8-94	WATER	N/A	RWC 7-28-94
TRANSPORTATION	Alan	5-01-94	WASTE WATER	N/A	RWC 7-28-94
HYDROLOGY	C. M. Lopez	8-5-94			
PARKS AND REC	D. G. Luna	7-26-94			
PROJECT NO.	4563.90	MAP NO.	L-14	SHEET	3 OF 5

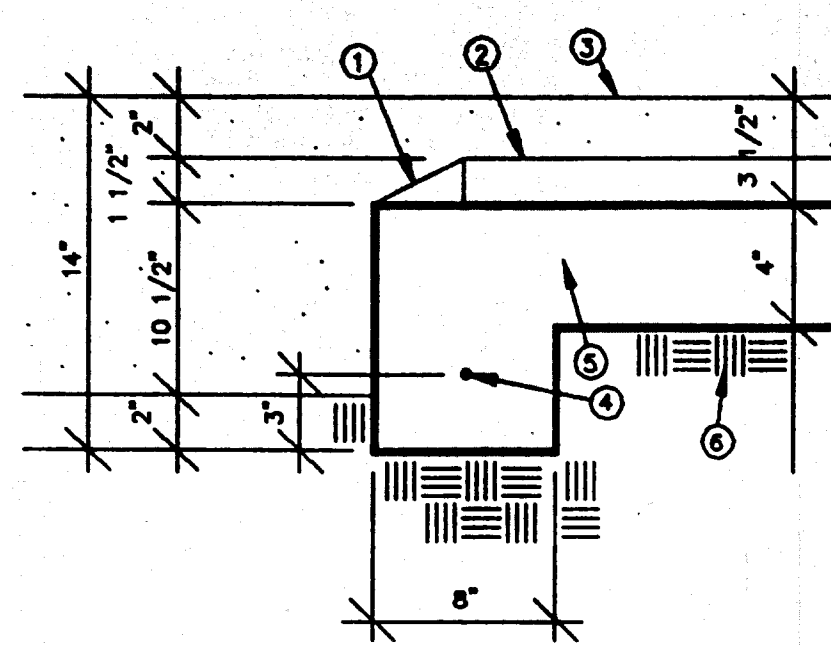




CITY OF ALBUQUERQUE  
LANDSCAPE  
SAFETY SURFACE DETAIL  
DETAIL 1

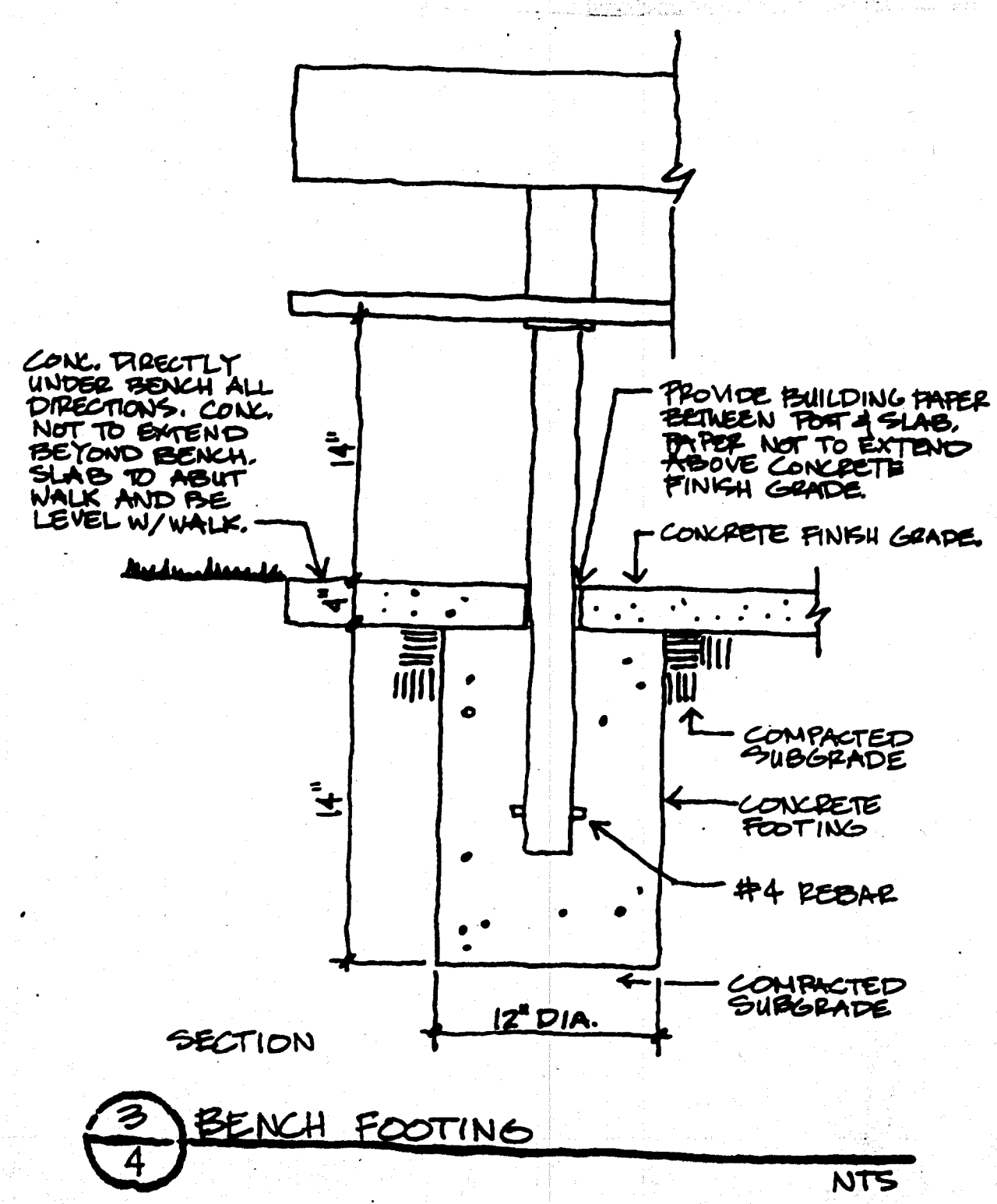
GENERAL NOTES:  
1. CONTROL JOINTS SHALL BE PLACED AT 5' O.C., AND  
2. EXPANSION JOINTS SHALL BE PLACED AT 20' O.C., AND  
WHERE THE EDGER ABUTS ANOTHER HARD SURFACE.

CONSTRUCTION NOTES:  
1. EXISTING 18" CONCRETE EDGER WALL.  
2. 1/2" EXPANSION JOINT.  
3. 4" 4000 PSI CONCRETE SLAB.  
4. 1 1/2" X 3" X 3" TUFF TURF TILES BY LANDSCAPE STRUCTURES INC.  
5. TOP OF TUFF TURF SHOULD BE 2" BELOW FINISH GRADE OF SAND.  
6. REMOVE SUBGRADE AS NEEDED TO PLACE CONCRETE SLAB AT PROPER LEVEL.  
7. SUBGRADE COMPACTED TO 95% UNDER CONCRETE SLAB.  
8. START CONCRETE SLAB 1 1/2" BELOW EXISTING 18" CONCRETE EDGER WALL.  
9. 14" CONCRETE EDGER ALL AROUND CONCRETE SLAB. SEE DETAIL X.



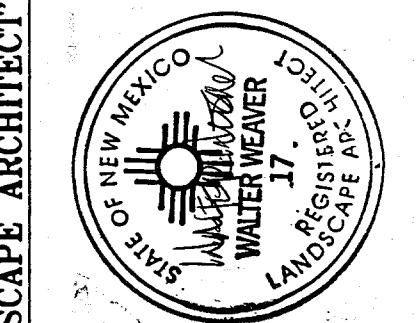
CITY OF ALBUQUERQUE  
LANDSCAPE  
TUFF TURF SLAB TURNDOWN  
DETAIL 2

CONSTRUCTION NOTES:  
1. TUFF TURF 150 PART NO. 289-70020 BEVELED EDGE OR BEVELED CORNER (NO. 289-70025). SEE SHEET 5 FOR QUANTITIES AND LAYOUT. INSTALL OVER CONCRETE SLAB AS PER MANUFACTURER'S SPECIFICATIONS.  
2. TUFF TURF 150 PART NO. 289-70015 FULL SQUARE. SEE SHEET 5 FOR QUANTITIES AND LAYOUT. INSTALL OVER CONCRETE SLAB AS PER MANUFACTURER'S SPECIFICATIONS.  
3. TOP OF PLAY AREA SAND TO BE 2" HIGHER THAN TOP OF TUFF TURF, AND 3 1/2" HIGHER THAN TOP OF SLAB.  
4. ONE #4 REBAR CONTINUOUS.  
5. 4000 PSI CONCRETE SLAB. FINISH PER TUFF TURF REQUIREMENTS.  
6. 95% COMPACTED SOIL UNDER CONCRETE SLAB.



NTS

QTY.	DESCRIPTION	MANUFACTURER + SUPPLIER	MODEL	COLOR	NOTES
1	PLAYBOOSTER	LANDSCAPE STRUCTURES INC. EXERPLAY INC. (505) 281-0151	9333	RED POSTS, TAN POLYETHYLENE TAN PERMALENE YELLOW LADDERS	DELETE BUBBLE PANEL 111282 AND REPLACE WITH DRIVER PANEL 111286. INSTALL PER MANUFACTURER'S SPECIFICATIONS.
1	PLAYBOOSTER	LANDSCAPE STRUCTURES INC. EXERPLAY INC. (505) 281-0151	9331	RED POSTS, TAN POLYETHYLENE TAN PERMALENE YELLOW LADDERS	DELETE BUBBLE PANEL 111282 AND REPLACE WITH TRACING PANEL 111290. INSTALL PER MANUFACTURER'S SPECIFICATIONS.
1	SPRING SEESAW	LANDSCAPE STRUCTURES INC. EXERPLAY INC. (505) 281-0151	100032	RED BEAM, RED + YELLOW SEATS	INSTALL PER MANUFACTURER'S SPECIFICATIONS.
1	LOOP RACK	LANDSCAPE STRUCTURES INC. EXERPLAY INC. (505) 281-0151	100102	RED	
8	PICNIC TABLE	WABASH VALLEY MFG. INC. THE PLAYWELL GROUP (505) 899-1762	H4010 HERITAGE SERIES	RED	IN-GROUND MOUNT. INSTALL W/30" HT. CLEARANCE FROM FINISH GRADE.
2	BENCH	WABASH VALLEY MFG. INC. THE PLAYWELL GROUP (505) 899-1762	GD8212	RED	SEE DETAIL 3, SHEET 4.
40	TUFFTURF TILE	LANDSCAPE STRUCTURES INC. EXERPLAY INC. (505) 281-0151	104613		INSTALL PER MANUFACTURER'S SPECIFICATIONS.
47	TUFFTURF TILE BEVELED EDGE	LANDSCAPE STRUCTURES INC. EXERPLAY INC. (505) 281-0151	104618		INSTALL PER MANUFACTURER'S SPECIFICATIONS.
10	TUFFTURF TILE BEVELED CORNER	LANDSCAPE STRUCTURES INC. EXERPLAY INC. (505) 281-0151	104623		INSTALL PER MANUFACTURER'S SPECIFICATIONS.
6 GAL.	TUFFTURF TOP COAT	LANDSCAPE STRUCTURES INC. EXERPLAY INC. (505) 281-0151	104697	GREEN	INSTALL PER MANUFACTURER'S SPECIFICATIONS.
6 GAL.	TUFFTURF ADHESIVE	LANDSCAPE STRUCTURES INC. EXERPLAY INC. (505) 281-0151	104692		INSTALL PER MANUFACTURER'S SPECIFICATIONS.
1	5000 SERIES SWING	LANDSCAPE STRUCTURES INC. EXERPLAY INC. (505) 281-0151	100081	RED	8' HT., 4 SWINGS. INSTALL PER MANUFACTURER'S SPECIFICATIONS.
2	SLASH-PROOF BELT SEAT	LANDSCAPE STRUCTURES INC. EXERPLAY INC. (505) 281-0151	100053	RED	INSTALL PER MANUFACTURER'S SPECIFICATIONS.
1	MOLDED BUCKET SUBSTITUTE SEAT	LANDSCAPE STRUCTURES INC. EXERPLAY INC. (505) 281-0151	100054	RED	INSTALL PER MANUFACTURER'S SPECIFICATIONS.
1	FULL BUCKET SUBSTITUTE SEAT	LANDSCAPE STRUCTURES INC. EXERPLAY INC. (505) 281-0151	100055	BLACK	INSTALL PER MANUFACTURER'S SPECIFICATIONS.
2	TRASH RECEPTACLE	MATERIALS INC. (505) 867-9035	RINGONADA II TR-3329-II		INSTALL PER MANUFACTURER'S SPECIFICATIONS.
1	SHELTER	LITCHFIELD INDUSTRIES INC. CHURCHILL RECREATION 1-800-724-PLAY	2200		TAN COLORED METAL ROOF. INSTALL PER MANUFACTURER'S SPECIFICATIONS.



DESIGNED BY: WW INC. DATE: 7/22/94  
DRAWN BY: WW INC. DATE: 7/22/94  
CHECKED BY: WW INC. DATE: 7/22/94

1 2 3 4 5 6 7 8 9 10 11 12 13 14 15  
26-45623.190 109196

CLASS II CONSTRUCTION BY  
PARKS AND GENERAL SERVICES DEPARTMENT  
DESIGN AND DEVELOPMENT DIVISION

CITY OF ALBUQUERQUE PARKS AND RECREATION DESIGN AND DEVELOPMENT					
TITLE: ALAMOSA PARK IMPROVEMENTS					
PHASE I DETAILS AND PRODUCT SCHEDULE					
APPROVALS	ENGINEER	DATE	APPROVALS	ENGINEER	DATE
DRC CHAIRMAN	<i>[Signature]</i>	8-8-94	WATER	NIA RWK	7-28-94
TRANSPORTATION	<i>[Signature]</i>	8-8-94	WASTE WATER	NIA RWK	7-28-94
HYDROLOGY	<i>[Signature]</i>	8-8-94			
PARKS AND REC	<i>[Signature]</i>	7-26-94			
PROJECT NO. 4563.90		MAP NO. L-14		SHEET 4 OF 5	

**WALTER WEAVER INC.**  
LANDSCAPE ARCHITECTS / ENVIRONMENTAL PLANNERS / GOLF COURSE ARCHITECTS  
800 COPPER AVE. SUITE 1000 ALBUQUERQUE, NEW MEXICO 87102 (505) 243-3888



SIDEWALK, CURB AND GUTTER INSTALLED BY OTHERS. PROJECT SPECIAL ASSESSMENT DISTRICT NO. 221.

CONNECT TO EXISTING IRRIGATION LINE.  
EXISTING CURB AND GUTTER TO REMAIN

EXISTING CURB AND CHAIN LINK FENCE TO BE REMOVED

CRUSHER FINES TO BE INSTALLED AT 4" DEPTH

SOD  
SEE  
PLANTING NOTES

INSTALL BOLLARDS PER CITY STD. DTL. 2723. TYP. 1 OF 2.

INSTALL WHEELCHAIR RAMP. SLOPE NOT TO EXCEED 1:12.

TAP VALVES TO EXISTING MASTERLINE

EXISTING SIDEWALK TO REMAIN

REMOVE EXISTING BOLLARDS  
INSTALL NEW SIDEWALK PER CITY OF ALBU. STD. DTL. 2430. TOP OF SIDEWALK TO BE LEVEL WITH TOP OF EXISTING SIDEWALKS.

CAP AND REMOVE EXISTING IRRIGATION LINE AND HEADS SHOWN. INSTALL NEW LINE AND HEADS ALONG THE SAME ALIGNMENT AS SHOWN.

REMOVE BUILT-UP BLOW SAND TO LEVEL OF EXISTING IRRIG. HEADS. INSTALL NEW HEADS AT SAME LEVEL AS EXISTING HEADS. RESOD

EXISTING CURB AND GUTTER TO REMAIN

CONNECT TO EXISTING IRRIGATION LINE.

SOD  
SEE  
PLANTING NOTES

## VALVE SCHEDULE

CONTROLLER	VALVE NO.	VALVE SIZE	TOTAL GPM	HEAD TYPE	GPM
EXISTING	11	2"	33	TORO S700	4.13
EXISTING	12	2"	33	TORO S700	4.13
EXISTING	13	2"	11	TORO S700	4.13

## IRRIGATION SCHEDULE

KEY PRODUCT DESCRIPTION

- RAINBIRD PEB SERIES AUTOMATIC VALVE SIZED PER PLAN W/ BROOKS 1730 PB-18 BODY (ABS) VALVE BOX
- TORO S700-FC-G.O-LA SPRINKLER HEAD #11 NOZZLE
- TORO S700-PC-G.O-LA SPRINKLER HEAD #8 NOZZLE
- RAINBIRD 2AV AIR RELIEF VALVE
- LATERAL LINE SCHEDULE 40 PVC SIZED PER PLAN
- SLEEVE, CLASS 200 PVC, TWO SIZES LARGER THAN PIPE TO BE SLEEVED
- VALVE NUMBER
- GALLONS PER MINUTE FOR VALVE
- VALVE SIZE

## IRRIGATION NOTES:

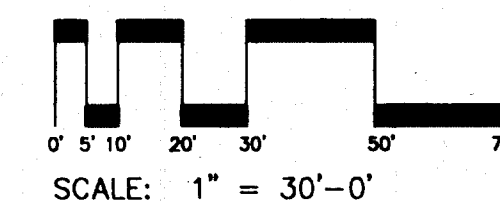
- CONTRACTOR SHALL EXAMINE THE SITE AND FAMILIARIZE HIMSELF WITH ALL CONDITIONS PERTINENT TO THIS WORK.
- THE CONTRACTOR WILL NOT WILLFULLY INSTALL THE IRRIGATION SYSTEM AS SHOWN ON THE PLANS WHEN IT IS OBVIOUS IN THE FIELD THAT CONDITIONS EXIST THAT MIGHT NOT HAVE BEEN CONSIDERED IN THE DESIGN OF THE SYSTEM. SUCH CONDITIONS SHOULD BE BROUGHT TO THE ATTENTION OF THE LANDSCAPE ARCHITECT. THE CONTRACTOR ASSUMES FULL RESPONSIBILITY FOR ANY REVISIONS NECESSARY.
- IT WILL BE THE CONTRACTOR'S RESPONSIBILITY TO DETERMINE THE LOCATION OF ALL UNDERGROUND UTILITIES AND TO AVOID DAMAGE TO THE SAME.
- ACTUAL FIELD CONDITIONS MAY NECESSITATE ADDING, DELETING, OR MAKING MINOR ADJUSTMENTS IN SPACING OF HEADS TO INSURE UNIFORM COVERAGE AND DISTRIBUTION.
- ALL POP-UP TYPE IRRIGATION HEADS INSTALLED IN LAWN AREAS SHALL BE INSTALLED SO THAT THE TOP OF THE HEAD IS LEVEL WITH FINISH GRADE AND ONE INCH FROM ADJACENT SIDEWALKS AND CURBS.
- ALL CONTROL WIRE TO BE SOLID COPPER UL APPROVED INSTALLED AS PER LOCAL CODE. RUNS LESS THAN 500 FEET SHALL BE #14 GAUGE. RUNS GREATER THAN 500 FEET SHALL BE #12 GAUGE WIRE. PROVIDE A 24 INCH LOOP AT EACH WIRE SPLICE OR POINT OF CONNECTION. SNAKE LINE IN TRENCHES.
- CONTRACTOR IS TO INSTALL A LAMINATED VALVE LEGEND INSIDE THE CONTROLLER VAULT.

## PLANTING NOTES:

- SOD NEW AREA OF PARK ACCORDING TO CITY OF ALBU. STANDARD SPECIFICATIONS, SECTION 1010. PRIOR TO SEEDING, PREPARE SOD BED BY ROTOTILLING EXISTING SOIL IN PARKING AREA. ADD PLANTING SOIL MIX PER CITY OF ALBU. STANDARD SPECIFICATIONS, TO LEVEL OF NEW SIDEWALK.

THIS SHEET  
NOT IN CONTRACT

WORK SHOWN HEREON IS PHASE II WORK  
AND IS TO BE DONE AFTER COMPLETION  
OF SAD NO. 221.



PARKING LOT REMOVALS, LAYOUT AND IRRIGATION PLAN

PARKING LOT PLANTING PLAN

WALTER WEAVER INC.  
LANDSCAPE ARCHITECTS / ENVIRONMENTAL PLANNERS / GOLF COURSE ARCHITECTS  
800 COPPER AVE. SUITE 1000 ALBUQUERQUE, NEW MEXICO 87102 (505)243-3800

CLASS II CONSTRUCTION BY  
PARKS AND GENERAL SERVICES DEPARTMENT  
DESIGN AND DEVELOPMENT DIVISION

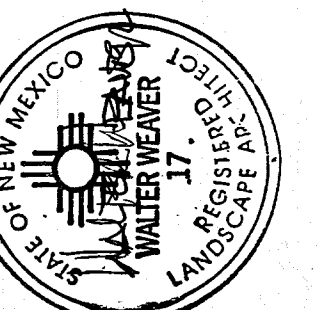
CITY OF ALBUQUERQUE  
PARKS AND RECREATION  
DESIGN AND DEVELOPMENT

TITLE: ALAMOSA PARK IMPROVEMENTS

PHASE II LAYOUT, IRRIGATION AND PLANTING

APPROVALS	ENGINEER	DATE	APPROVALS	ENGINEER	DATE
DRC CHAIRMAN	W.D. Weaver	8-8-94	WATER	N/A	RWL 7-28-94
TRANSPORTATION	W.D. Weaver	8-8-94	WASTE WATER	N/A	RWL 7-28-94
HYDROLOGY	C. Weaver	8-8-94			
PARKS AND REC	W.D. Weaver	7-28-94			

PROJECT NO. 4563.90 MAP NO. L-14 SHEET 5 OF 5



DESIGNED BY: WW INC. DATE: 7/22/94  
DRAWN BY: WW INC. DATE: 7/22/94  
CHECKED BY: WW INC. DATE: 7/22/94