

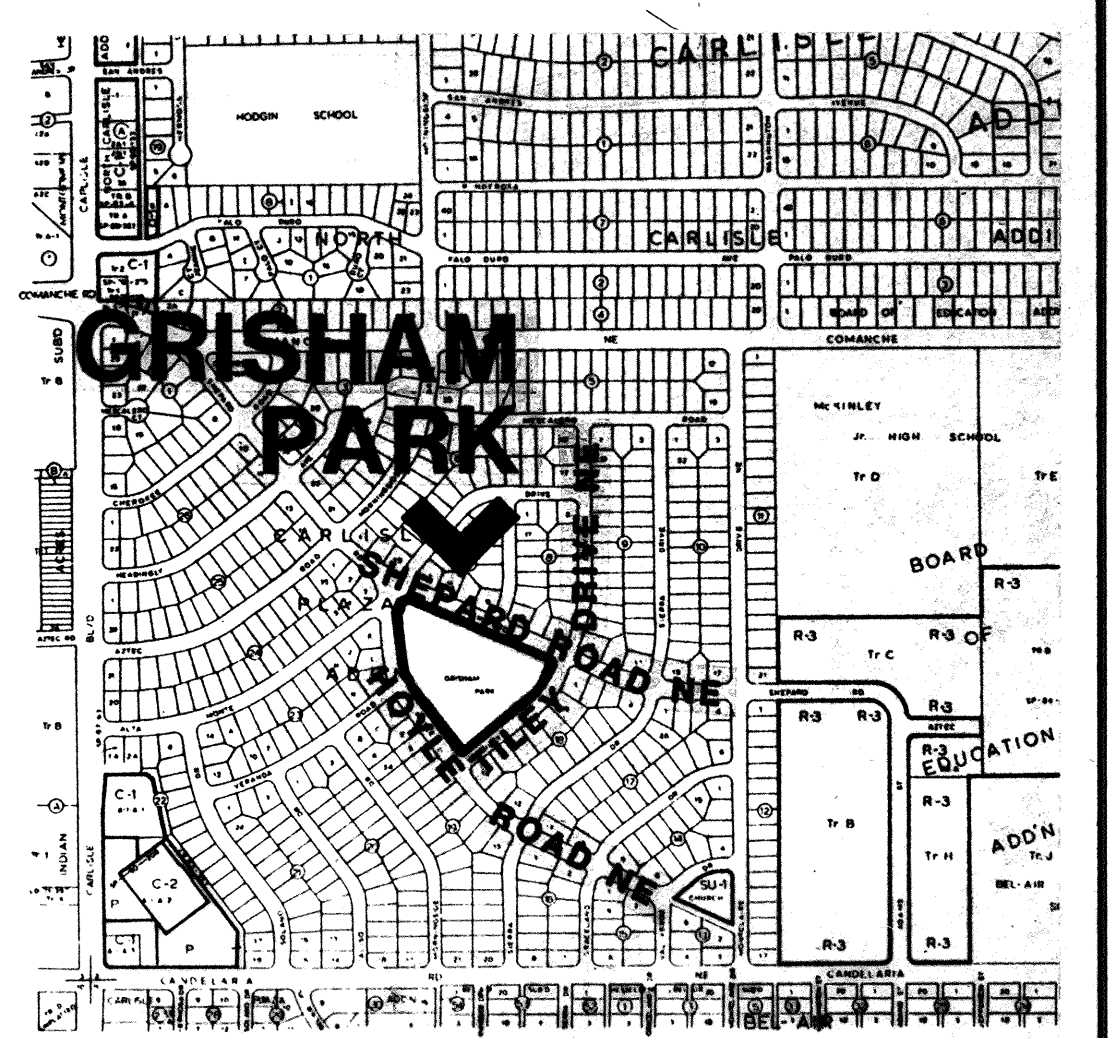
CONSTRUCTION DOCUMENTS  
CLASS I CONSTRUCTION

GRISHAM PARK  
IMPROVEMENTS

HOYLE ROAD NE AND SHEPARD ROAD NE  
WATER METER ADDRESS: 3119 1/2 TILEY ROAD N.E.

INDEX OF DRAWINGS

TITLE	SHEET NO.
COVER SHEET	1 OF 9
EXISTING CONDITIONS AND REMOVALS	2 OF 9
IRRIGATION PLAN PHASE I	3 OF 9
SITE PLAN	4 OF 9
PLAYGROUND PLAN AND TREE PLANTING PLAN	5 OF 9
DETAILS	6 OF 9
DETAILS	7 OF 9
DETAILS	8 OF 9
IRRIGATION PLAN PHASE II	9 OF 9



VICINITY MAP MAP NO. G-17-Z


- CLASS II CONSTRUCTION BY PARKS AND RECREATION DEPARTMENT DESIGN AND DEVELOPMENT DIVISION.
- ALL WORK TO BE IN ACCORDANCE WITH CITY OF ALBUQUERQUE STANDARD SPECIFICATIONS, 1986 EDITION W/UPDATE #4, OR PER ATTACHED SPECIFICATIONS.
- THREE WORKING DAYS PRIOR TO BEGINNING CONSTRUCTION CONTRACTOR SHALL SUBMIT TO THE CONSTRUCTION COORDINATION DIVISION A DETAILED CONSTRUCTION SCHEDULE.
- TWO WORKING DAYS PRIOR TO CONSTRUCTION THE CONTRACTOR SHALL OBTAIN A BARRICADING PERMIT FROM THE CONSTRUCTION COORDINATION DIVISION. CONTRACTOR SHALL NOTIFY BARRICADE ENGINEER ( 768-2551 ) PRIOR TO OCCUPYING AN INTERSECTION.
- THE CONTRACTOR SHALL CONTACT NEW MEXICO ONE CALL SYSTEM PHONE: 260-1990, TO LOCATE UNDERGROUND UTILITIES 2 WORK DAYS PRIOR TO BEGINNING EXCAVATION.
- THE CONTRACTOR SHALL CONTACT TRAFFIC ENGINEERING OPERATIONS 764-1599 FOR REMOVAL AND REPLACEMENT OF TRAFFIC SIGNS.
- THE CONTRACTOR SHALL RETAIN AND PROTECT ALL EXISTING UTILITIES, UNLESS NOTED OTHERWISE. ANY DAMAGE TO EXISTING UTILITIES SHALL BE REPAIRED AT THE CONTRACTOR'S EXPENSE.
- ALL EXISTING IMPROVEMENTS ARE TO REMAIN, UNLESS SPECIFICALLY NOTED TO BE REMOVED. CONTRACTOR SHALL REPAIR ANY CONTRACTOR-CAUSED DAMAGE, AS DETERMINED BY THE ENGINEER TO EXISTING IMPROVEMENTS TO THE SATISFACTION OF THE OWNER AT THE CONTRACTOR'S EXPENSE.
- ALL WORK DETAILED ON THESE PLANS TO BE PERFORMED UNDER CONTRACT SHALL, EXCEPT AS OTHERWISE NOTED OR PROVIDED HEREIN, BE CONSTRUCTED IN ACCORDANCE WITH THE CONTRACT DOCUMENTS "GRISHAM PARK IMPROVEMENTS".
- PRIOR TO CONSTRUCTION, THE CONTRACTOR SHALL CHECK ALL DIMENSIONS, HORIZONTAL AND VERTICAL, AND SHALL EXCAVATE AND VERIFY THE HORIZONTAL AND VERTICAL LOCATIONS OF ALL OBSTRUCTIONS. SHOULD A CONFLICT EXIST, THE CONTRACTOR SHALL NOTIFY THE ENGINEER PRIOR TO CONSTRUCTION SO THAT CONFLICT CAN BE RESOLVED WITH THE MINIMUM AMOUNT OF DELAY.
- FOR PURPOSES OF THIS PROJECT, THE TERM ENGINEER SHALL REFER TO EITHER THE OWNER'S EMPLOYEE OR THE LANDSCAPE ARCHITECT RESPONSIBLE FOR CONSTRUCTION INSPECTION OF THE PROJECT.
- ALL REFERENCES TO COMPACTED BACKFILL OR COMPACTED SUBGRADE SHALL MEAN SOIL COMPACTED TO 95% OF MAXIMUM DENSITY AS DETERMINED BY ASTM D-1557 UNLESS OTHERWISE NOTED.
- CONTRACTOR SHALL NOTIFY THE ENGINEER NOT LESS THAN SEVEN (7) DAYS PRIOR TO STARTING WORK, IN ORDER THAT THE ENGINEER MAY TAKE NECESSARY MEASURES TO INSURE THE PRESERVATION OF SURVEY MONUMENTS. CONTRACTOR SHALL NOT DISTURB PERMANENT SURVEY MONUMENTS WITHOUT THE CONSENT OF THE ENGINEER AND SHALL NOTIFY THE ENGINEER AND BEAR THE EXPENSE OF REPLACING ANY THAT MAY BE DISTURBED WITHOUT PERMISSION. REPLACEMENT SHALL BE DONE ONLY BY THE ENGINEER. WHEN A CHANGE IS MADE IN THE FINISH ELEVATION OF THE PAVEMENT OF ANY ROADWAY IN WHICH A PERMANENT SURVEY MONUMENT IS LOCATED, CONTRACTOR SHALL, AT HIS OWN EXPENSE, ADJUST THE MONUMENT COVER TO NEW GRADE, UNLESS OTHERWISE SPECIFIED.

REV.	SHEETS	CITY ENGINEER	DATE	USER DEPARTMENT	DATE	USER DEPARTMENT	DATE
APPROVAL FOR REVISIONS							
LANDSCAPE ARCHITECT'S SEAL		WALTER WEAVER INC. LANDSCAPE ARCHITECTS / ENVIRONMENTAL PLANNERS / GOLF COURSE ARCHITECTS 809 COPPER AVE NE SUITE 100C ALBUQUERQUE, NEW MEXICO 87102 (505)245-1556		APPROVED FOR CONSTRUCTION <i>[Signature]</i> 1/25/24 C.E.			
		PROJECT NO. 4600.90		COVER SHEET 1 of 9			

SET NUMBER: \_\_\_\_\_



- ### GENERAL NOTES:
1. GRADE PLAY FIELD ONLY TO LEVEL ANY UNEVEN AREAS. DO NOT GRADE UNDER ANY EXISTING TREE DRILPINES.
  2. REMOVE ALL EXISTING IRRIGATION VALVES, HEADS, AND CONTROLLER, EXCEPT AS NOTED IN KEYED NOTES.
- ### KEYED NOTES:
- ① EXISTING CONCRETE TO REMAIN.
  - ② EXISTING CONCRETE PICNIC TABLE TO REMAIN.
  - ③ EXISTING WHEELCHAIR RAMP AND BOLLARDS TO REMAIN.
  - ④ EXISTING BENCH TO BE REMOVED. CONTACT PARK MANAGEMENT 857-8650 FOR INSTRUCTION ON BENCH SALVAGE OR DISPOSAL.
  - ⑤ EXISTING TRASH RECEPTACLE, POST, AND CONCRETE PAD. TRASH RECEPTACLE TO BE REMOVED. CONTACT PARK MANAGEMENT 857-8650 FOR INSTRUCTION ON RECEPTACLE SALVAGE OR DISPOSAL. POST AND CONCRETE PAD TO REMAIN.
  - ⑥ EXISTING IRRIGATION LINE TO REMAIN. TYPICAL.
  - ⑦ EXISTING IRRIGATION HEAD TO REMAIN. TYPICAL.
  - ⑧ CUT AND ABANDON SECTION OF IRRIGATION LINE AND CAP EACH END BEFORE IRRIGATION HEAD.
  - ⑨ REMOVE EXISTING SAND TO A DEPTH OF 16" FROM TOP OF EXISTING CONCRETE. REMOVE ALL EXISTING PLAY EQUIPMENT AND ALL EQUIPMENT FOUNDATIONS. DISPOSE OF OLD SAND PROPERLY. CONTACT PARK MANAGEMENT 857-8650 FOR INSTRUCTION ON SALVAGE OR DISPOSAL OF PLAY EQUIPMENT.

NO.	DATE	REVISIONS/REMARKS	BY	LANDSCAPE ARCHITECT'S SEAL	SURVEY INFORMATION		BENCH MARK	AS BUILT INFORMATION			
					FIELD NOTES			CONTRACTOR	DATE:		
					NO.	BY	DATE	STANDARD ACS BRASS MONUMENT "7-G17" SET IN TOP OF CURB LOCATED 3.9 MILES NORTH OF INTERSECTION OF CARLSLE BOULEVARD AND COMANCHE ROAD. ELEVATION = 5122.99	CONTRACTOR	DATE:	
										INSPECTORS APPROVAL	DATE:
										FIELD VERIFICATION BY	DATE:
										DRAWING CORRECTED BY	DATE:
										MICRO-FILM INFORMATION	
DESIGNED BY: WW INC.									RECORDED BY	DATE:	
DRAWN BY: WW INC.									NO.		
CHECKED BY: WW INC.											

PARKS AND GENERAL SERVICES DEPARTMENT  
DESIGN AND DEVELOPMENT DEPARTMENT  
CLASS I CONSTRUCTION

CITY OF ALBUQUERQUE PARKS AND GENERAL SERVICES DESIGN AND DEVELOPMENT						
TITLE: GRISHAM PARK IMPROVEMENTS						
EXISTING CONDITIONS AND REMOVALS						
APPROVALS	ENGINEER	DATE	APPROVALS	ENGINEER	DATE	
DRC CHAIRMAN	<i>B. G. Eubank</i>	<i>1-20-94</i>	WATER	<i>R. W. Kone</i>	<i>1-17-94</i>	
TRANSPORTATION	<i>W. Kone</i>	<i>1-18-94</i>	WASTE WATER	<i>R. W. Kone</i>	<i>1-17-94</i>	
HYDROLOGY	<i>M. C. G. G.</i>	<i>1-15-94</i>				
PARKS AND REC	<i>W. Kone</i>	<i>1-20-94</i>				
PROJECT NO.	4600.90	MAP NO.	G-17	SHEET	2 OF	9





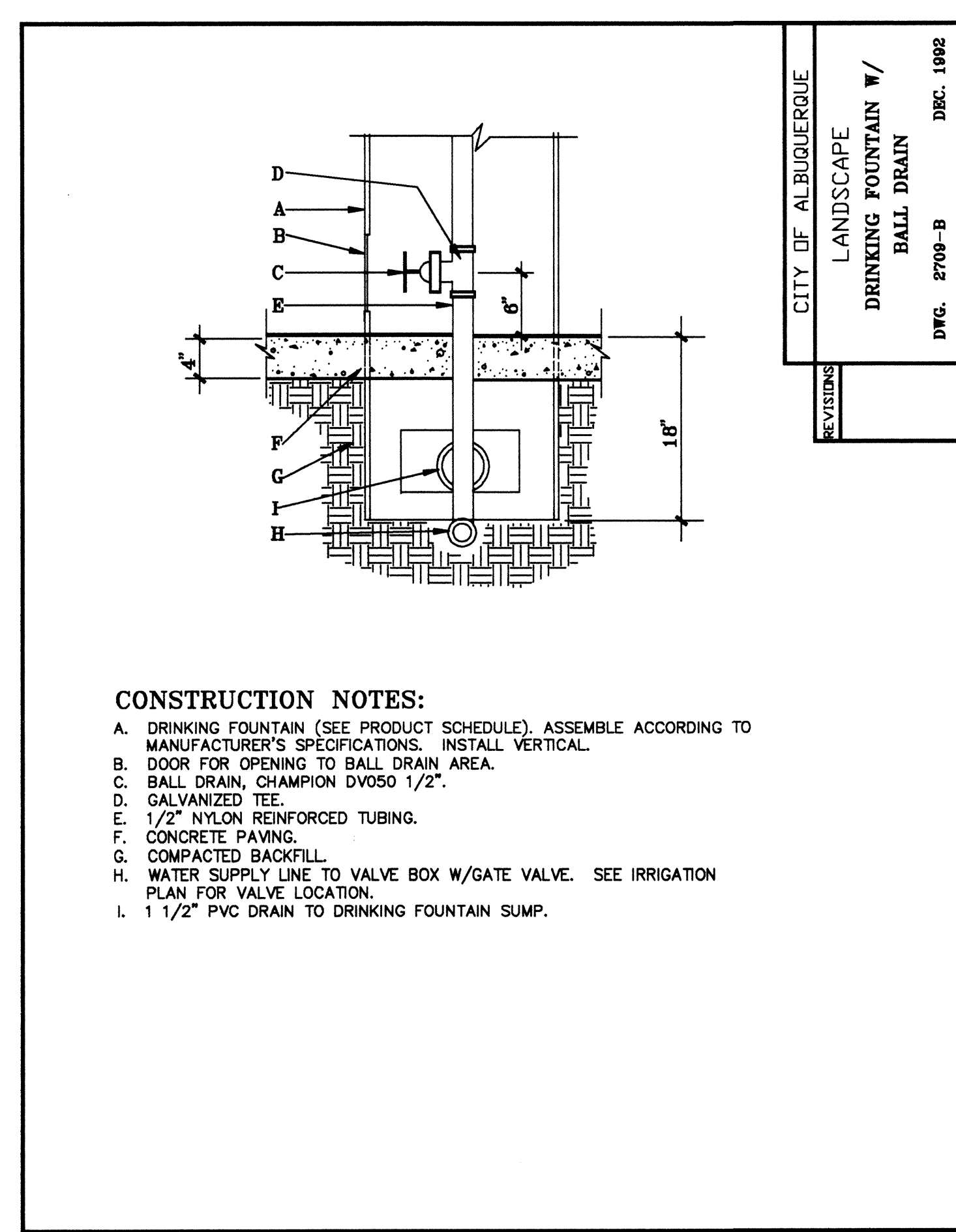
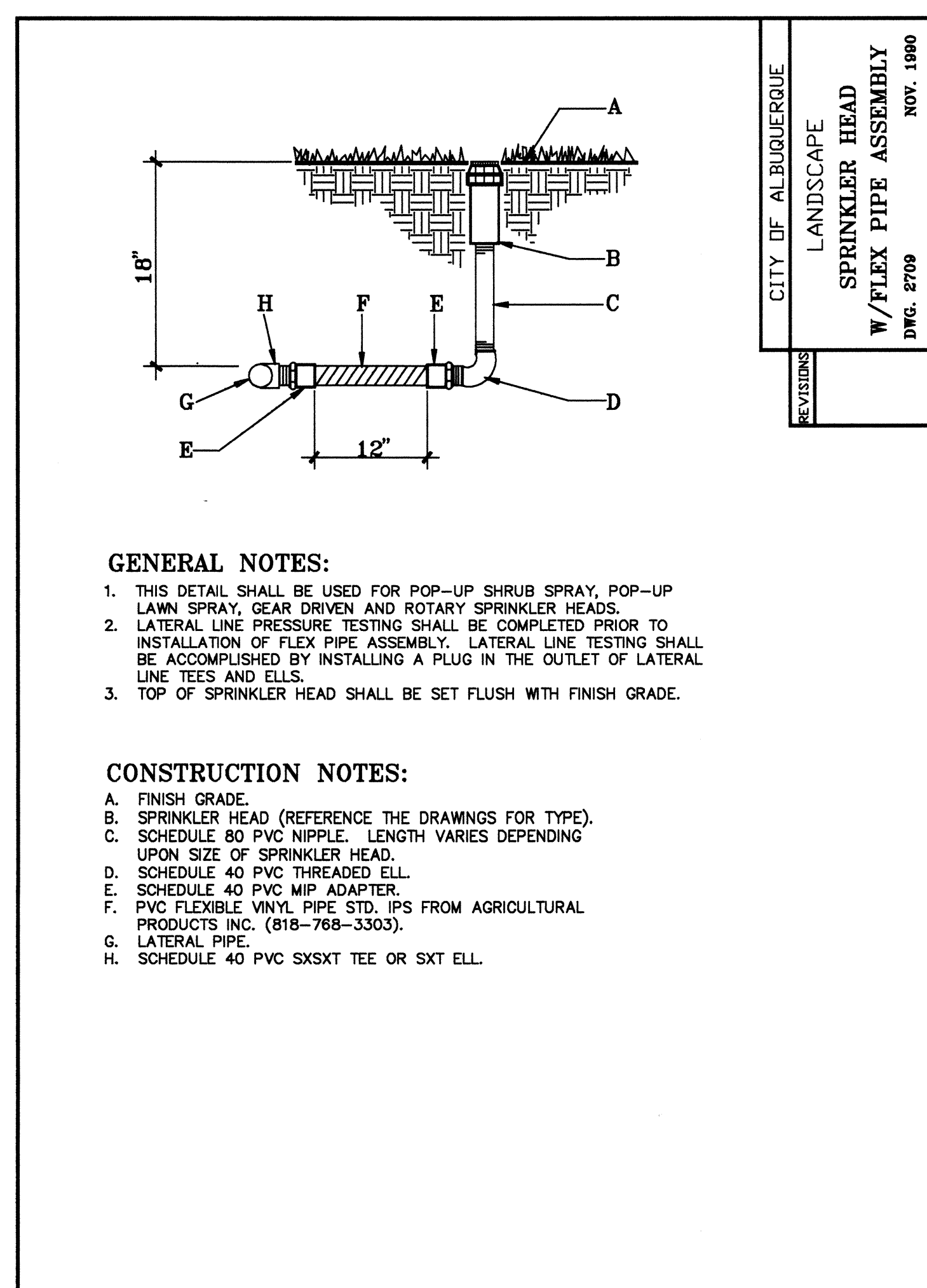
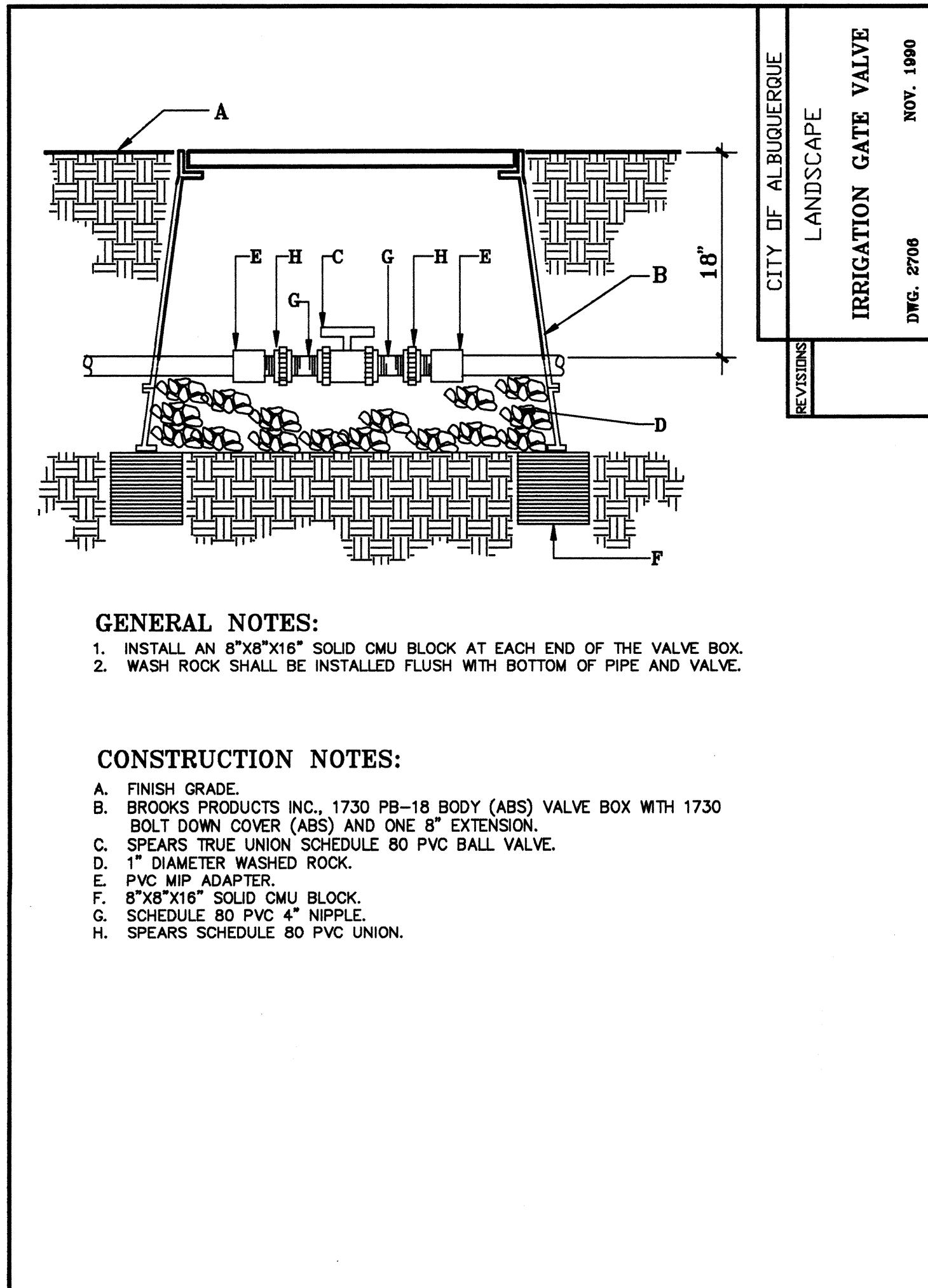
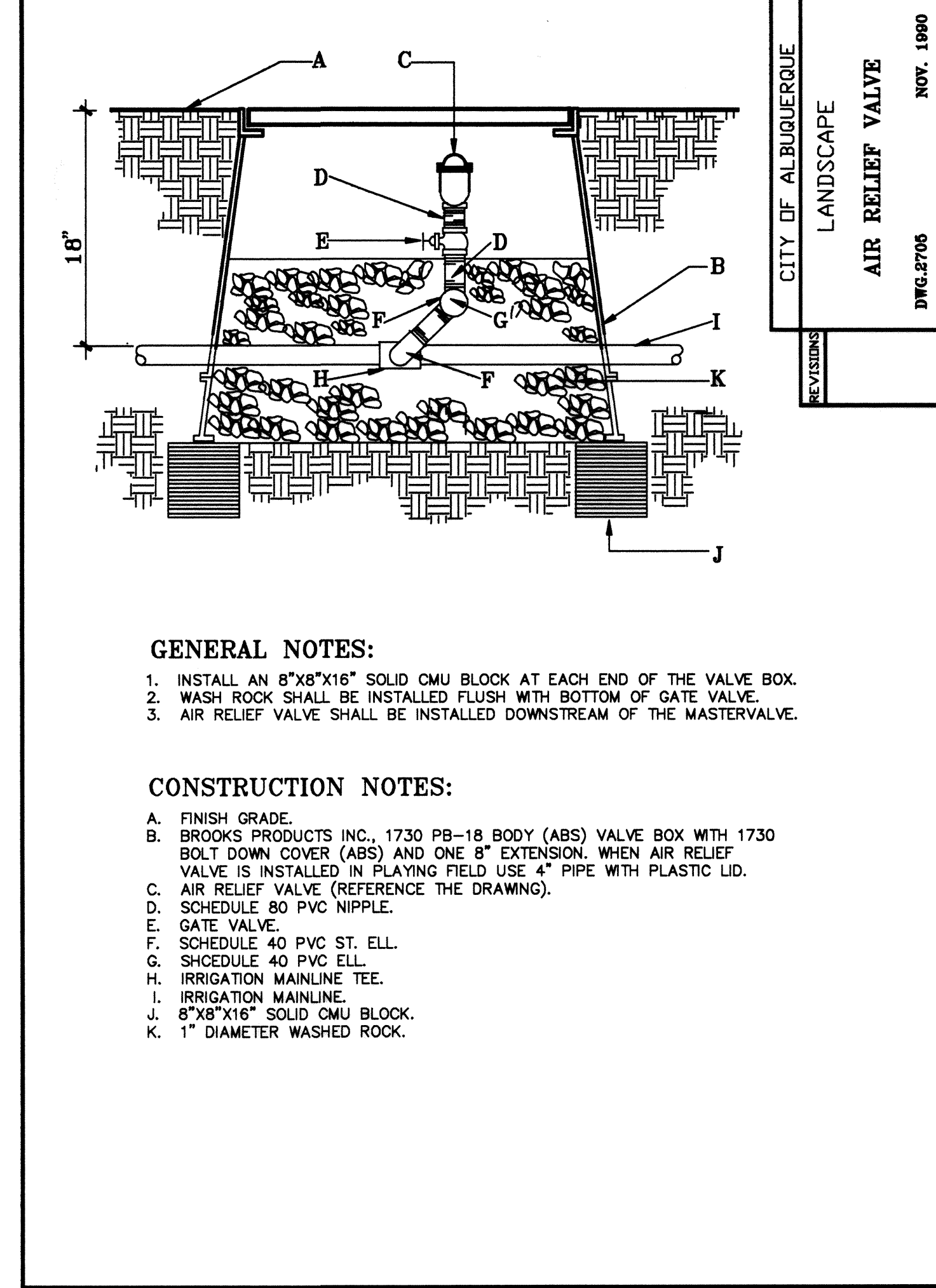
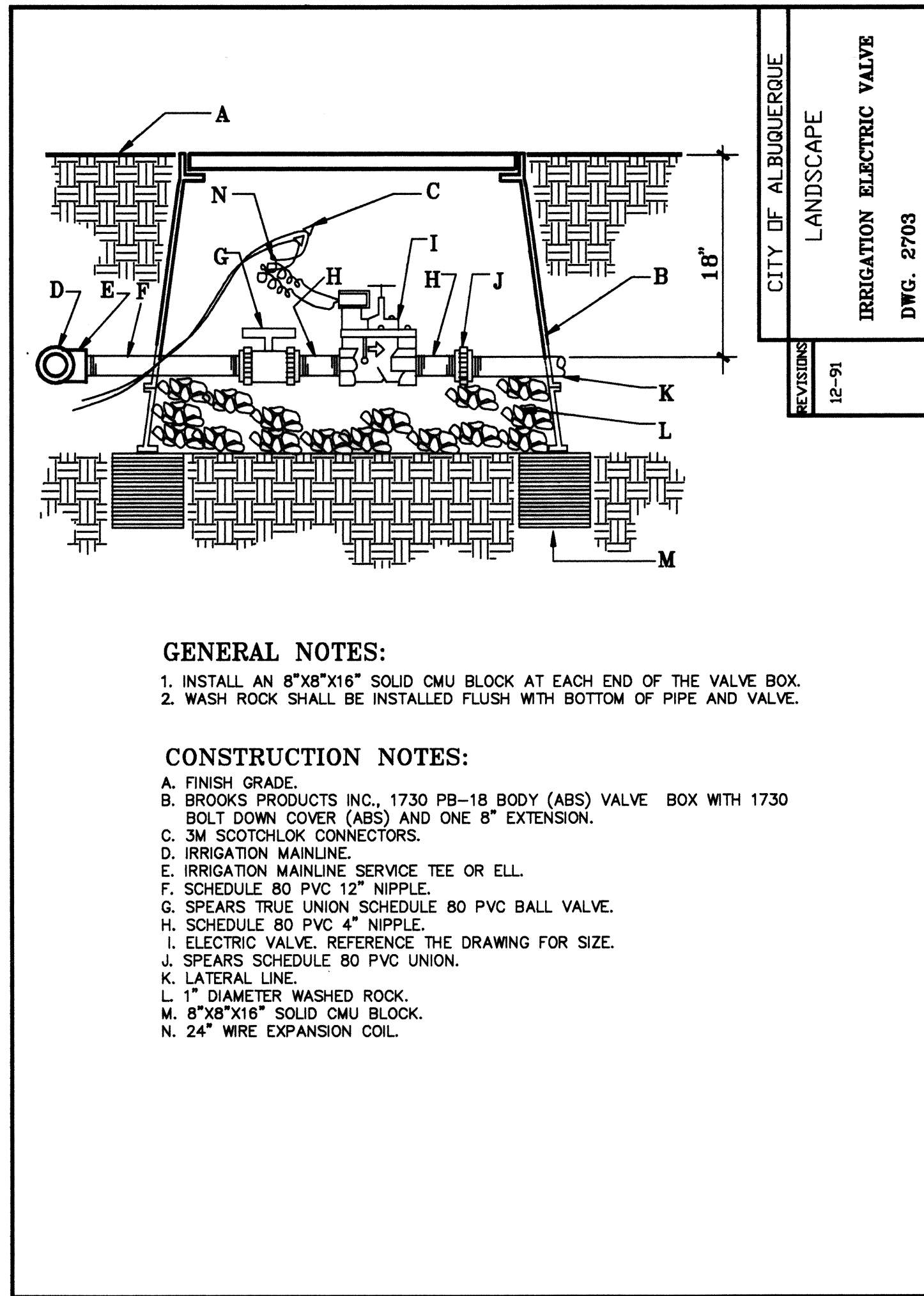
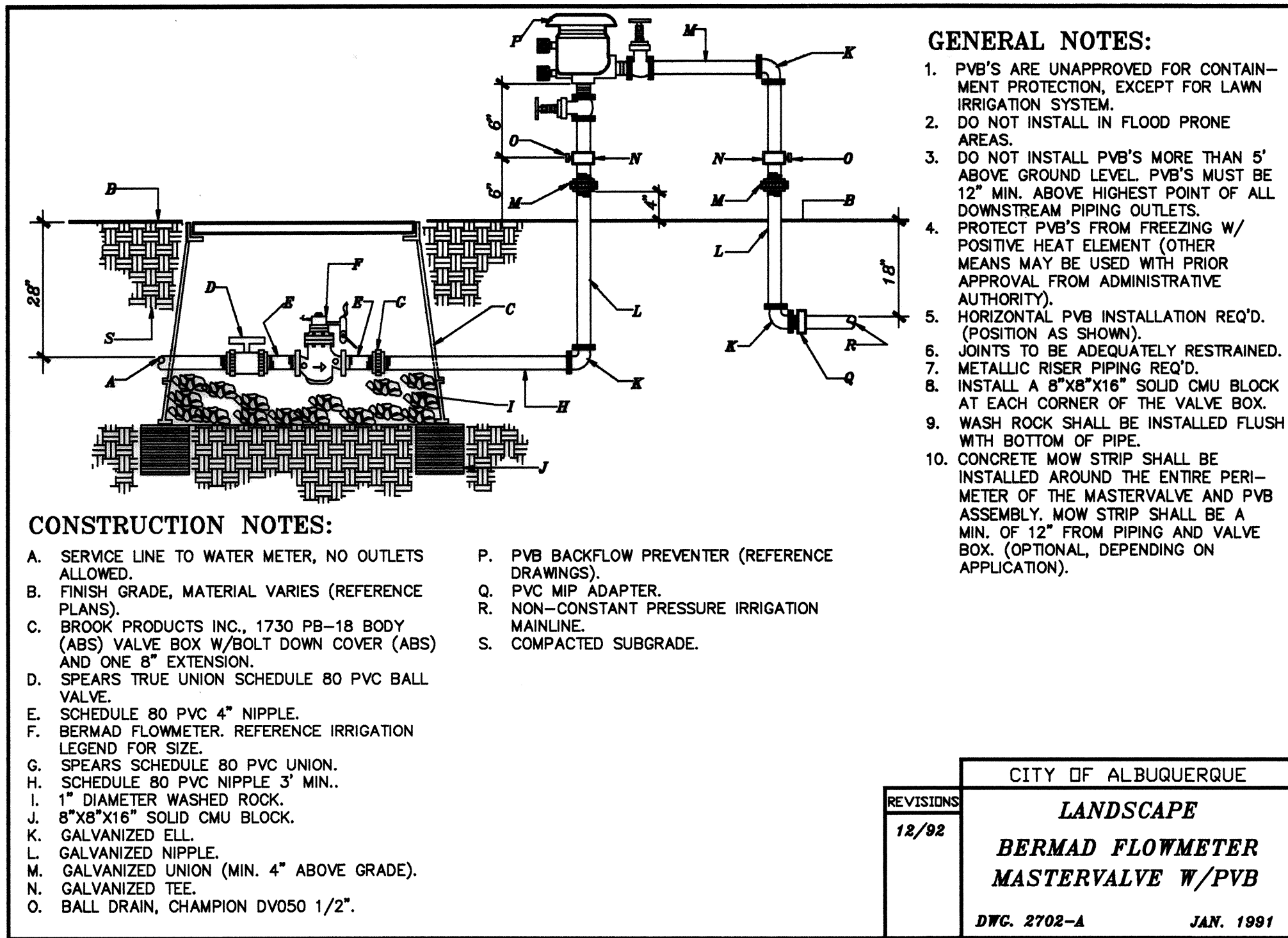










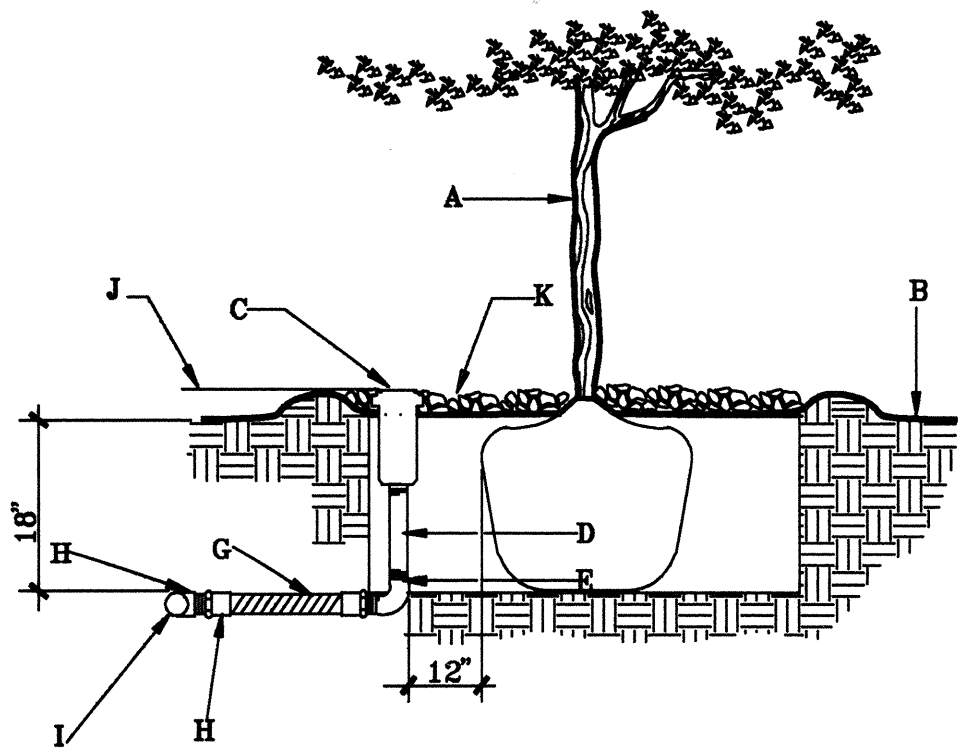


PARKS AND GENERAL SERVICES DEPARTMENT  
DESIGN AND DEVELOPMENT DEPARTMENT  
CLASS I CONSTRUCTION

CITY OF ALBUQUERQUE PARKS AND GENERAL SERVICES DESIGN AND DEVELOPMENT					
TITLE: GRISHAM PARK IMPROVEMENTS DETAILS					
APPROVALS	ENGINEER	DATE	APPROVALS	ENGINEER	DATE
DRC CHAIRMAN	<i>[Signature]</i>	1-20-94	WATER	<i>[Signature]</i>	1-12-94
TRANSPORTATION	<i>[Signature]</i>	1-18-94	WASTE WATER	<i>[Signature]</i>	1-12-94
HYDROLOGY	<i>[Signature]</i>	1-18-94			
PARKS AND REC	<i>[Signature]</i>	1-20-94			
PROJECT NO. 4600.90		MAP NO. G-17		SHEET 6 OF 9	

WALTER WEAVER INC.  
LANDSCAPE ARCHITECTS / ENVIRONMENTAL PLANNERS / GOLF COURSE ARCHITECTS  
809 COPPER AVE NE SUITE 100E ALBUQUERQUE, NEW MEXICO 87102 (505)243-3556





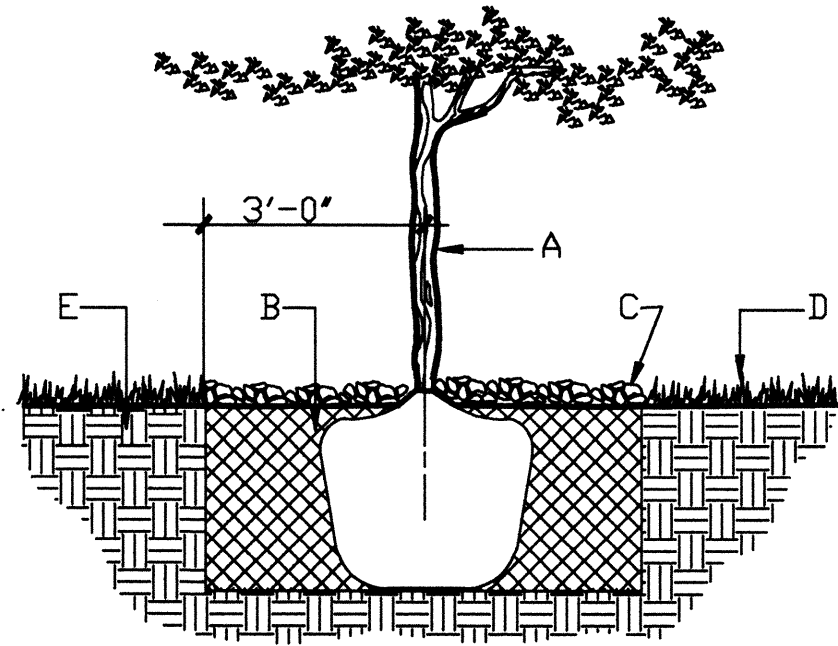
#### GENERAL NOTES:

1. LATERAL LINE PRESSURE TESTING SHALL BE COMPLETED PRIOR TO INSTALLATION OF FLEX PIPE ASSEMBLY. LATERAL LINE TESTING SHALL BE ACCOMPLISHED BY INSTALLING A PLUG IN THE OUTLET OF LATERAL LINE TEES AND ELLS.
2. BUBBLER SHALL ALWAYS BE INSTALLED ON THE UPHILL SIDE OF THE TREE.

#### CONSTRUCTION NOTES:

- A. TREE
- B. FINISH GRADE
- C. BUBBLER HEAD AND POP-UP BODY (REFERENCE IRRIGATION LEGEND)
- D. SCH. 80 PVC NIPPLE
- E. SCH. 40 PVC THEADED ELL
- F. SCH. 40 PVC MIP ADAPTER
- G. PVC FLEXIBLE VINYL PIPE STD., IPS FROM AGRICULTURAL PRODUCTS INC. (818-768-3303)
- H. SCH. 40 PVC SXSXT TEE OR SXT ELL
- I. LATERAL PIPE
- J. TOP OF BUBBLER LEVEL WITH TOP OF BARK MULCH OF MAX. 1" ABOVE TOP OF BARK MULCH.
- K. 4" BARK MULCH

CITY OF ALBUQUERQUE	
LANDSCAPE	
IRRIGATION BUBBLER HEAD AT TREE	
REVISIONS	NOV. 1990
12-91	DWG. 2710



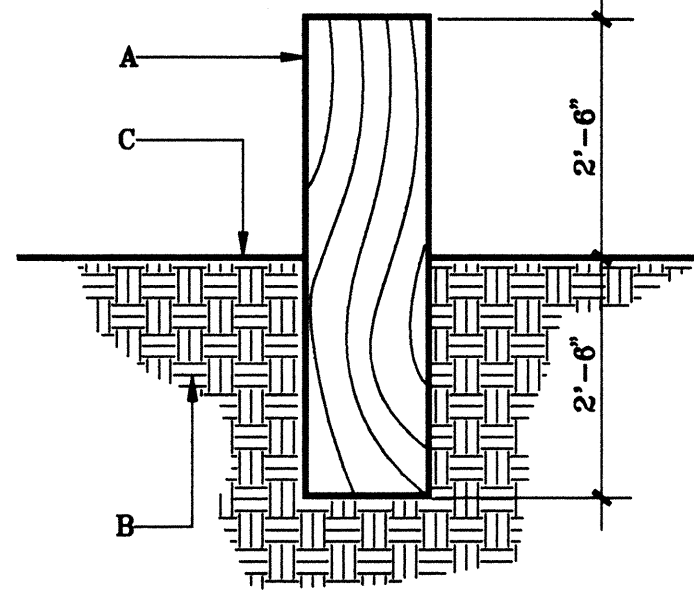
#### GENERAL NOTES:

1. ROOTBALL SHALL BE PLACED ON UNDISTURBED SOIL TO PREVENT TREE FROM SETTLING.
2. TOP OF ROOTBALL INDICATES LEVEL AT WHICH TREE WAS GROWN AND DUG; THIS REPRESENTS THE LEVEL AT WHICH THE TREE SHOULD BE INSTALLED; THAT LEVEL MAY BE EXCEEDED BY ONLY A ONE INCH LAYER OF SOIL.
3. PRIOR TO BACKFILLING TREE, ALL WIRE ROPE AND SYNTHETIC MATERIALS SHALL BE REMOVED FROM THE TREE AND THE PLANTING PIT.
4. PRIOR TO BACKFILLING ALL BURLAP SHALL BE CUT AWAY EXCEPT FROM BOTTOM OF ROOTBALL.

#### CONSTRUCTION NOTES:

- A. TREE
- B. BACKFILL WITH EXISTING SOIL
- C. 4" DEPTH OF BARK MULCH
- D. TURF AT FINISH GRADE
- E. UNDISTURBED SOIL

CITY OF ALBUQUERQUE	
LANDSCAPE	
TREE PLANTED IN TURF	
REVISIONS	NOV. 1990
12-91	DWG. 2713



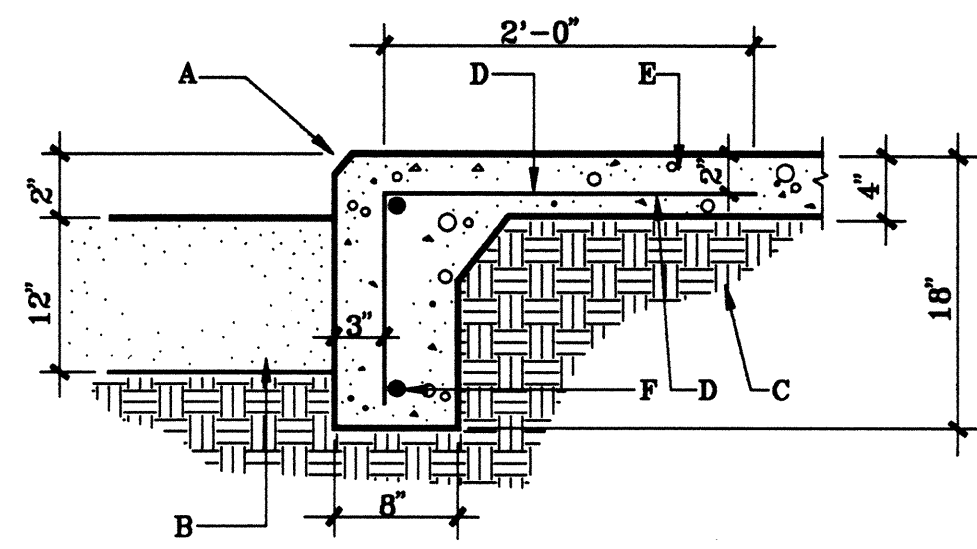
#### GENERAL NOTES:

1. BOLLARD SHALL BE PONDEROSA PINE TREATED WITH COPPER ARSENATE IN ACCORDANCE WITH THE REQUIREMENTS OF AWPA C-14. WOOD PRESERVATIVES SHALL CONFORM WITH THE REQUIREMENTS OF AASHTO M-133.
2. BOLLARD SHALL BE INSTALLED IN A HOLE EXCAVATED TO A MINIMUM SIZE OF 24"X24"X30". BACKFILL AROUND BOLLARD SHALL BE COMPACTED TO 95%.

#### CONSTRUCTION NOTES:

- A. WOOD BOLLARD; 8"X8"X5'-0"
- B. SUBGRADE COMPACTED TO 95% (SEE SECTION 301).
- C. MATERIAL VARIES (REFERENCE THE DRAWING).

CITY OF ALBUQUERQUE	
LANDSCAPE	
BOLLARD DETAIL	
REVISIONS	NOV. 1990
12-91	DWG. 2723



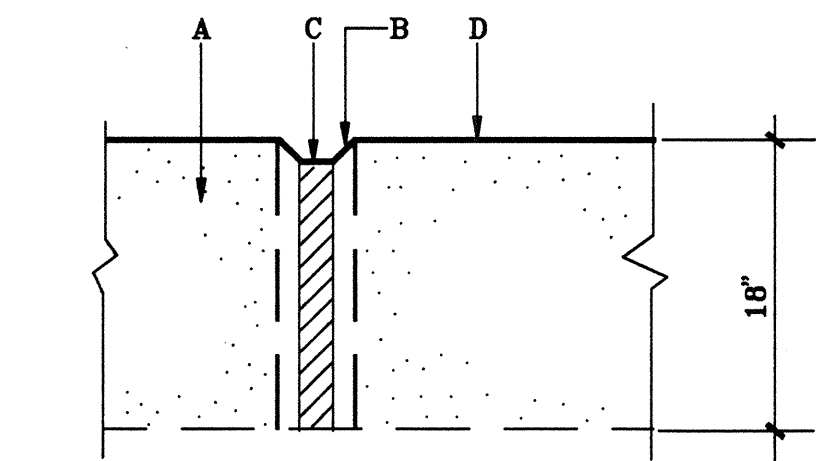
#### GENERAL NOTES:

1. CONTROL JOINTS SHALL BE PLACED AT 5' O.C..
2. EXPANSION JOINTS SHALL BE PLACED AT 20' O.C..

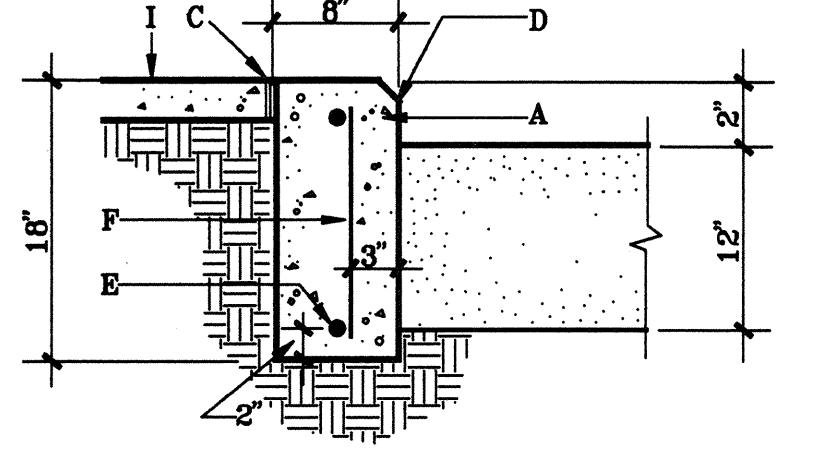
#### CONSTRUCTION NOTES:

- A. 1" CHAMFERED EDGE.
- B. BRICK SAND.
- C. SUBGRADE COMPACTED TO 95% (SEE SECTION 301).
- D. #4 REBAR AT 12" O.C.
- E. 4000 PSI CONCRETE WITH BRUSH FINISH (SEE SECTION 101).
- F. #4 REBAR, HORIZONTAL AND CONTINUOUS.

CITY OF ALBUQUERQUE	
LANDSCAPE	
TURN DOWN SLAB AT PLAY AREA	
REVISIONS	NOV. 1990
12/91	DWG. 2728



#### EXPANSION JOINT DETAIL



#### WALL DETAIL

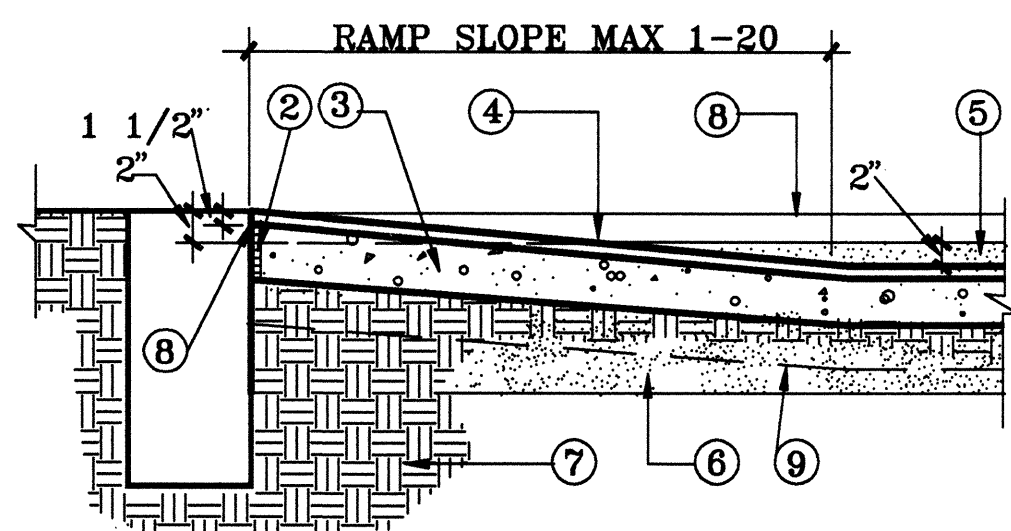
#### GENERAL NOTES:

1. CONTROL JOINTS SHALL BE PLACED AT 5' O.C..
2. EXPANSION JOINTS SHALL BE PLACED AT 20' O.C. AND BETWEEN CURB AND ANY HARD SURFACE.

#### CONSTRUCTION NOTES:

- A. 4000 PSI CONCRETE WITH BRUSH FINISH (SEE SECTION 101).
- B. 1" CHAMFER.
- C. 1/2" EXPANSION JOINT MATERIAL.
- D. TOOLED EDGE.
- E. #4 REBAR, HORIZONTAL AND CONTINUOUS.
- F. #4 REBAR AT 4' O.C..
- G. BRICK SAND.
- H. SUBGRADE COMPACTED TO 95% (SEE SECTION 301).
- I. EXISTING CONCRETE

CITY OF ALBUQUERQUE	
LANDSCAPE	
EDGER WALL AT SAND PLAY AREA	
REVISIONS	NOV. 1990
12-91	DWG. 2729



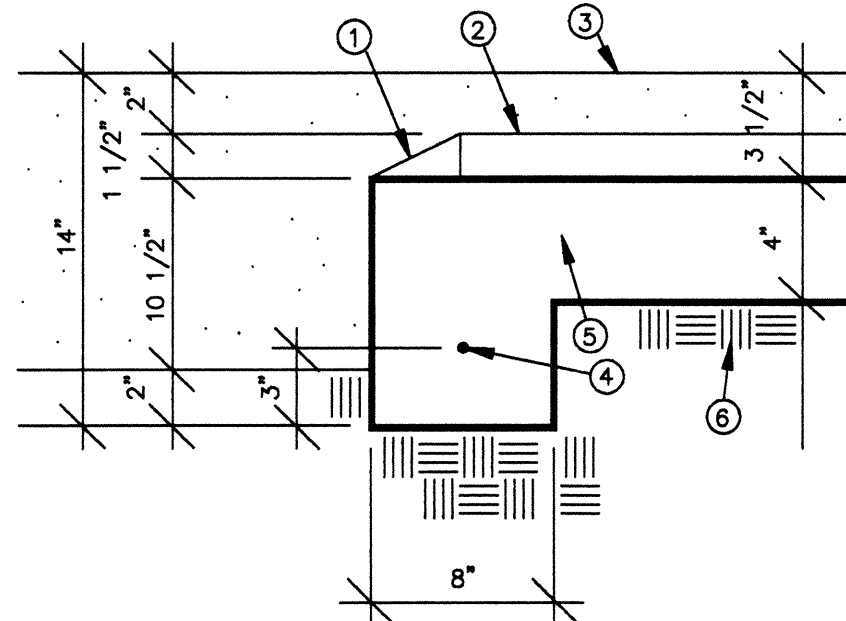
#### GENERAL NOTES:

1. CONTROL JOINTS SHALL BE PLACED AT 5' O.C..
2. EXPANSION JOINTS SHALL BE PLACED AT 20' O.C. AND WHERE THE EDGER ABUTS ANOTHER HARD SURFACE.

#### CONSTRUCTION NOTES:

1. 1/2" EXPANSION JOINT.
2. 4" 4000 PSI CONCRETE SLAB.
3. 1 1/2" X 3' X 3' TUFF TURF TILES BY LANDSCAPE STRUCTURES INC.
4. TOP OF TUFF TURF SHOULD BE 2" BELOW FINISH GRADE OF SAND.
5. REMOVE SUBGRADE AS NEEDED TO PLACE CONCRETE SLAB AT PROPER LEVEL.
6. SUBGRADE COMPACTED TO 95% UNDER CONCRETE SLAB.
7. START CONCRETE SLAB 1 1/2" BELOW EXISTING 18" CONCRETE EDGER WALL.
8. 14" CONCRETE EDGER ALL AROUND CONCRETE SLAB. SEE DETAIL B, SHEET 7.
9. 95% COMPACTED SOIL UNDER CONCRETE SLAB.

CITY OF ALBUQUERQUE	
LANDSCAPE	
SAFETY SURFACE DETAIL A	
REVISIONS	



#### CONSTRUCTION NOTES:

1. TUFF TURF 150 PART NO. 289-70020 BEVELED EDGE OR BEVELED CORNER (NO. 289-70025) SEE SHEET 5 FOR QUANTITIES AND LAYOUT. INSTALL OVER CONCRETE SLAB AS PER MANUFACTURER'S SPECIFICATIONS.
2. TUFF TURF 150 PART NO. 289-70015 FULL SQUARE. SEE SHEET 5 FOR QUANTITIES AND LAYOUT. INSTALL OVER CONCRETE SLAB AS PER MANUFACTURER'S SPECIFICATIONS.
3. TOP OF PLAY AREA SAND TO BE 2" HIGHER THAN TOP OF TUFF TURF, AND 3 1/2" HIGHER THAN TOP OF SLAB.
4. ONE #4 REBAR CONTINUOUS.
5. 4000 PSI CONCRETE SLAB. FINISH PER TUFF TURF REQUIREMENTS.
6. 95% COMPACTED SOIL UNDER CONCRETE SLAB.

CITY OF ALBUQUERQUE	
LANDSCAPE	
TUFF TURF SLAB TURNDOWN DETAIL B	
REVISIONS	

PARKS AND GENERAL SERVICES DEPARTMENT  
DESIGN AND DEVELOPMENT DEPARTMENT  
CLASS I CONSTRUCTION

CITY OF ALBUQUERQUE  
PARKS AND GENERAL SERVICES  
DESIGN AND DEVELOPMENT

TITLE: GRISHAM PARK IMPROVEMENTS  
DETAILS

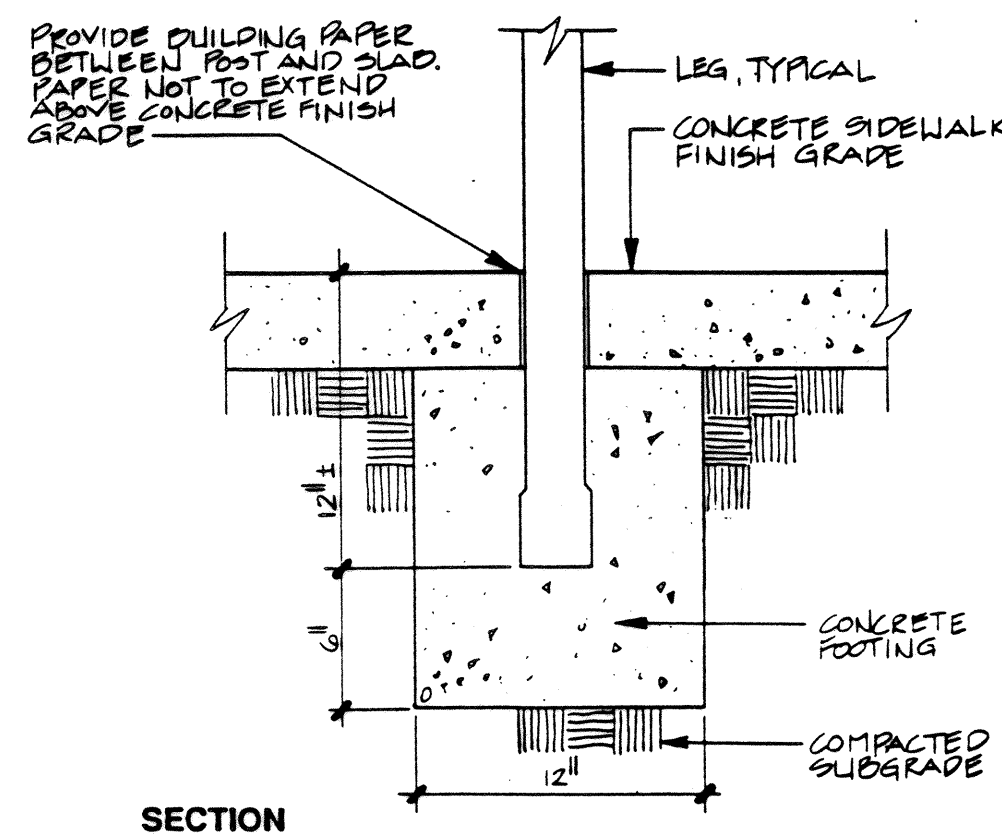
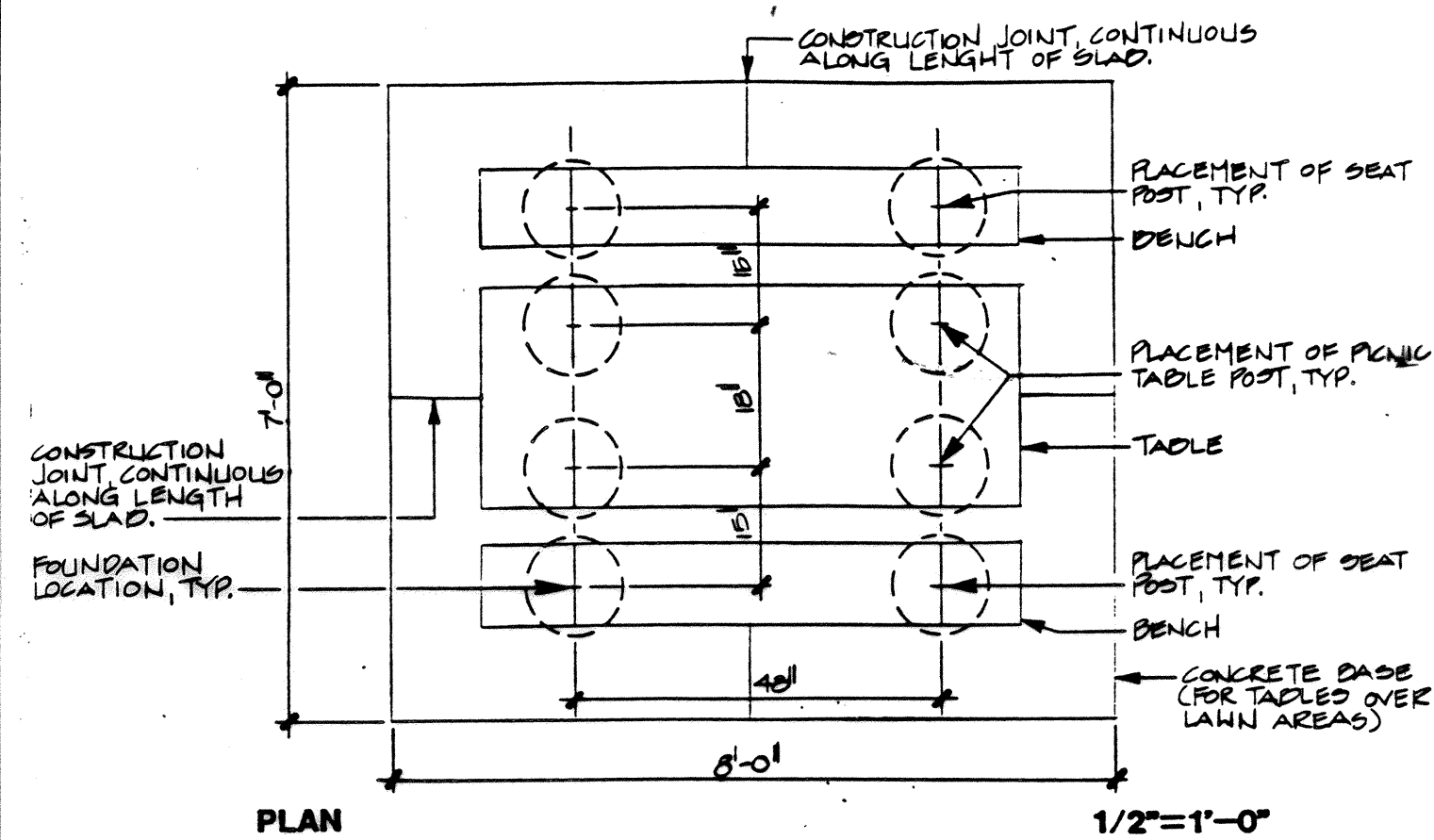
APPROVALS	ENGINEER	DATE	APPROVALS	ENGINEER	DATE
DRC CHAIRMAN	<i>[Signature]</i>	1-20-94	WATER	<i>[Signature]</i>	1-12-94
TRANSPORTATION	<i>[Signature]</i>	1-18-94	WASTE WATER	<i>[Signature]</i>	1-12-94
HYDROLOGY	<i>[Signature]</i>	1-18-94			
PARKS AND REC	<i>[Signature]</i>	1-20-94			

PROJECT NO. 4600.90 MAP NO. G-17 SHEET 7 OF 9

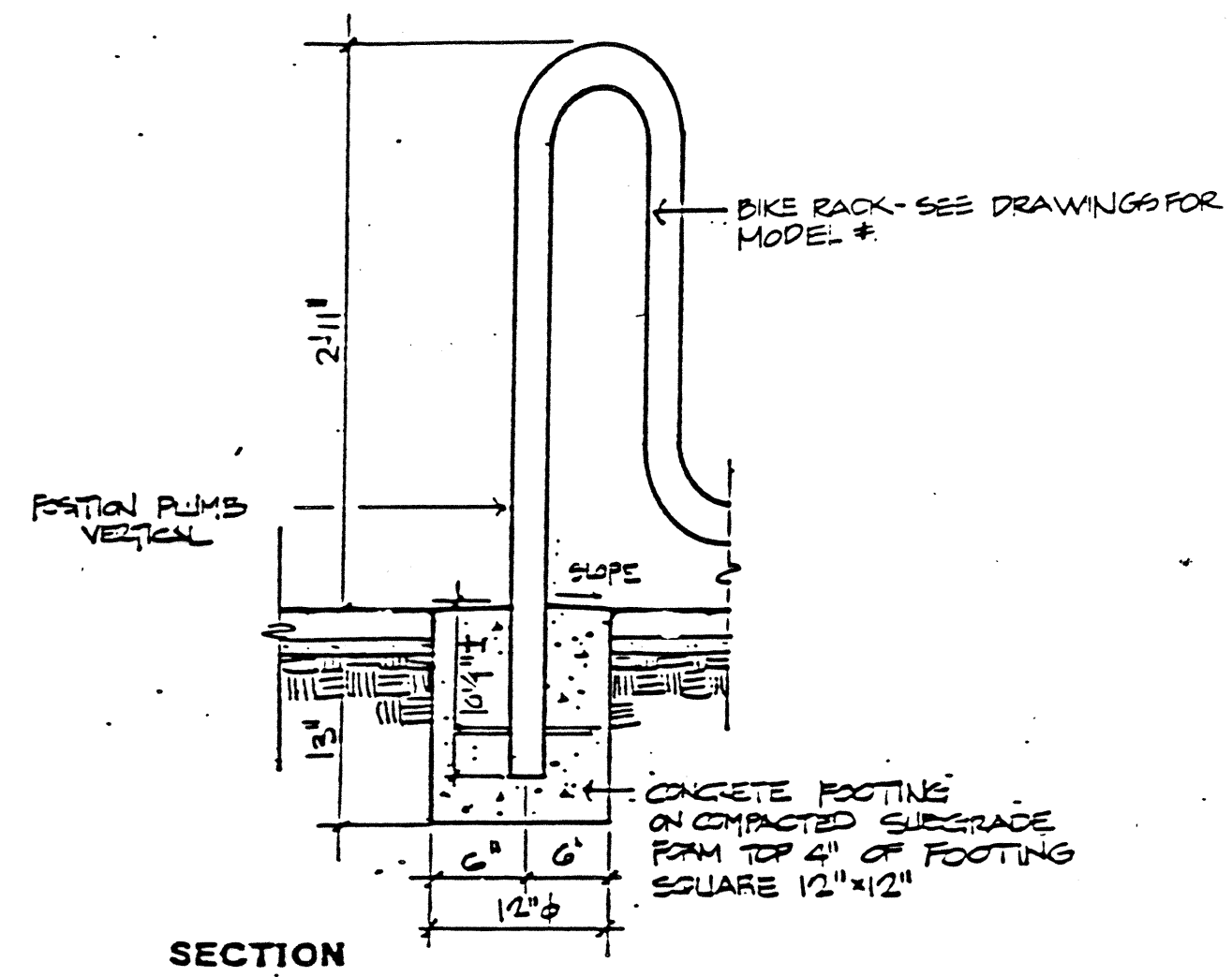
WALTER WEAVER INC.  
LANDSCAPE ARCHITECTS / ENVIRONMENTAL PLANNERS / GOLF COURSE ARCHITECTS  
809 COPPER AVE. N. SUITE 1000 ALBUQUERQUE, NEW MEXICO 87102 (505)243-3556



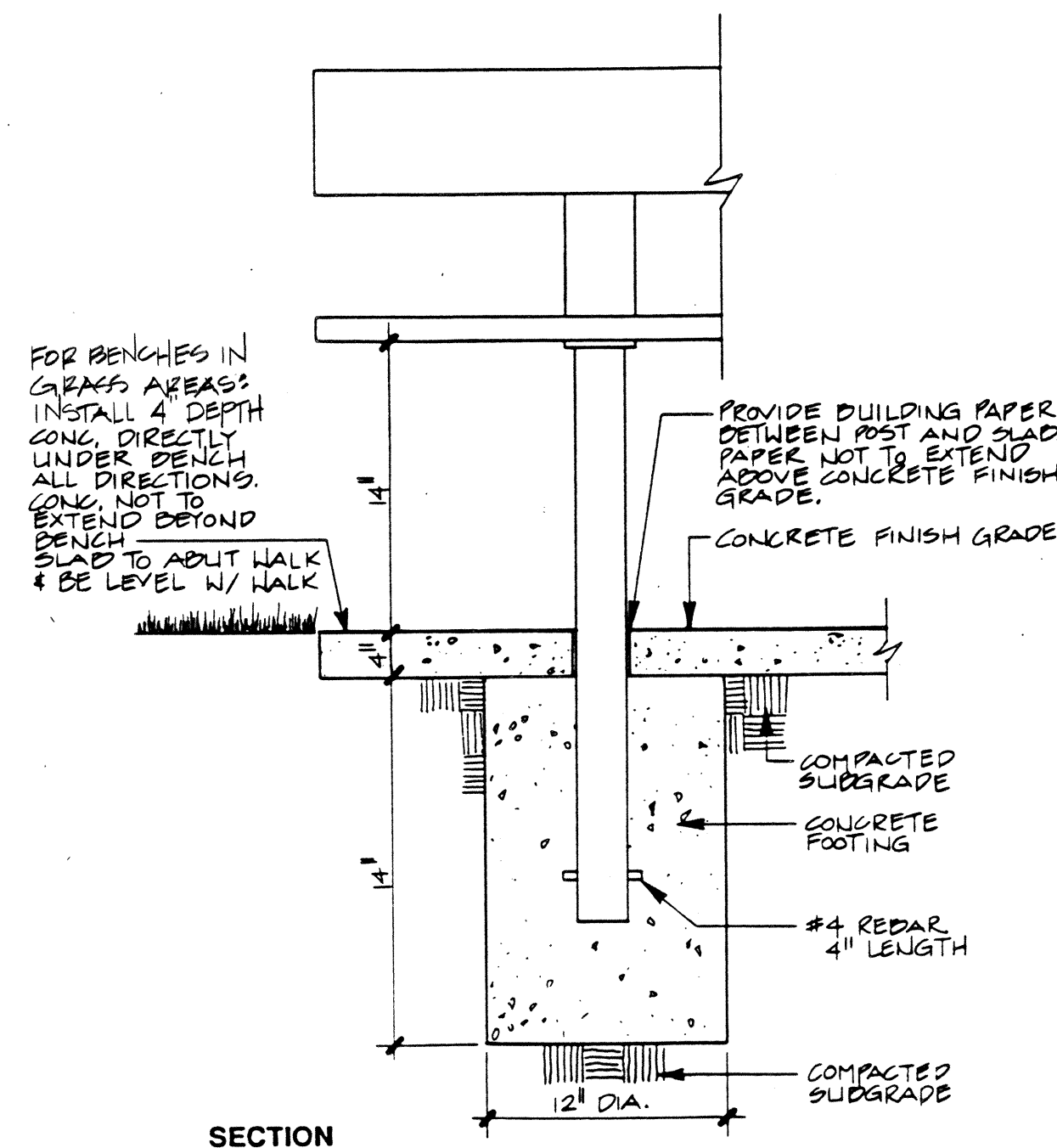
DESIGNED BY: WW INC. DATE: 1-7-93  
DRAWN BY: WW INC. DATE: 1-7-93  
CHECKED BY: WW INC. DATE: 1-7-93



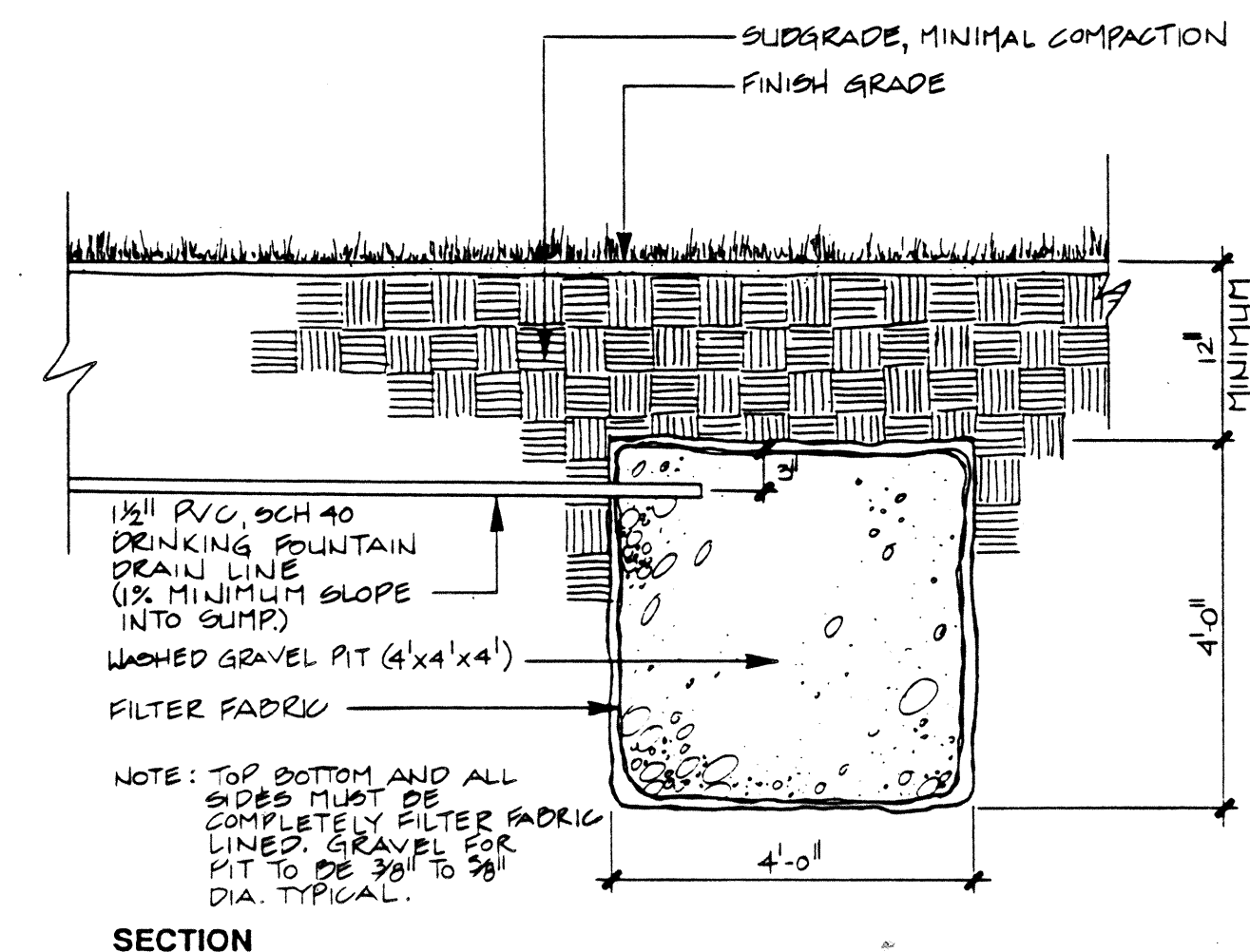
1 PICNIC TABLE AND SEAT FOOTING  
1 1/2"=1'-0"



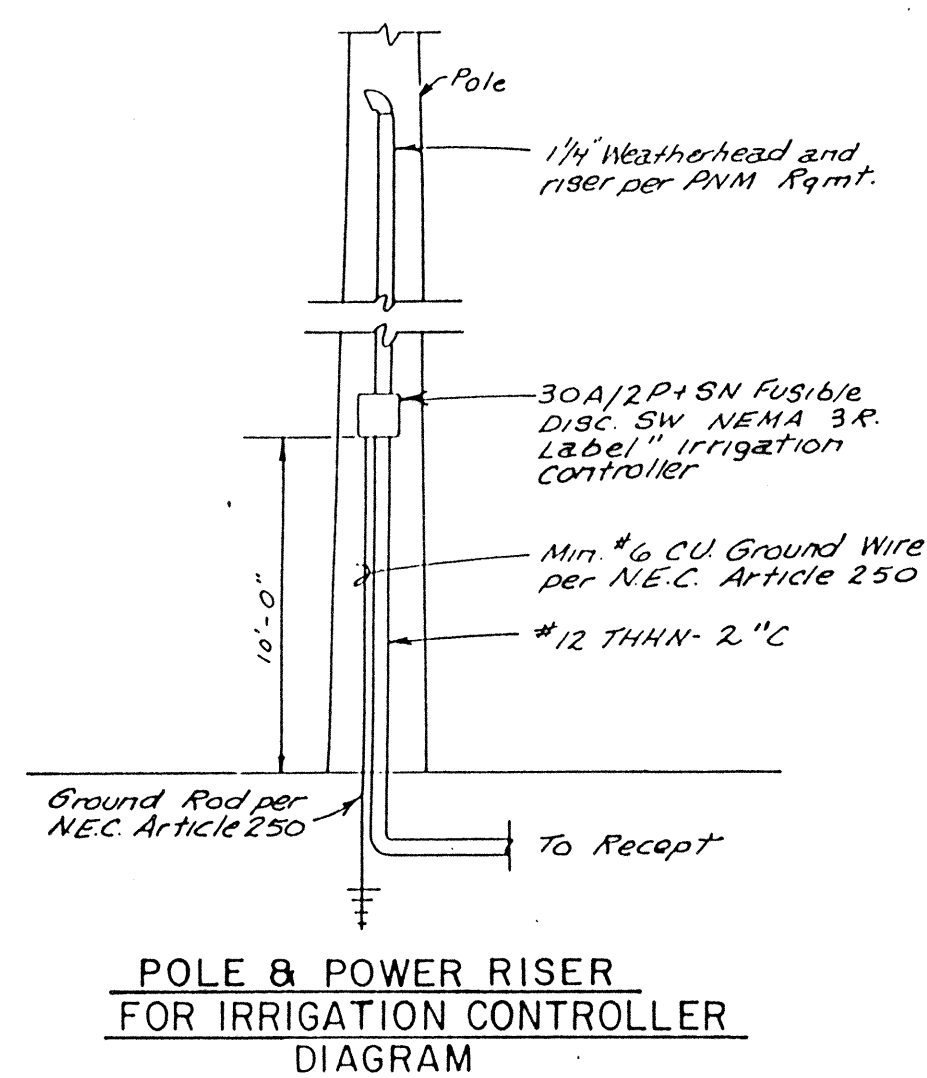
2 BICYCLE RACK  
NTS



3 BENCH FOOTING  
1 1/2"=1'-0"



4 DRINKING FOUNTAIN SUMP  
1 1/2"=1'-0"



5 POWER FOR IRRIGATION CONTROLLER  
8

(POLE & POWER RISER)  
GENERAL ELECTRICAL NOTES:

- IT SHALL BE THIS CONTRACTOR'S RESPONSIBILITY TO COORDINATE WITH PUBLIC SERVICE COMPANY OF NEW MEXICO FOR POLE LOCATIONS AND SERVICE REQUIREMENTS. COMPLY AS NECESSARY.
- ALL ELECTRICAL CONDUITS SHALL BE INSTALLED A MINIMUM OF 30" BELOW GRADE. COORDINATE WITH LANDSCAPE AND IRRIGATION PIPING TO PREVENT CONFLICTS.
- ALL ELECTRICAL CONDUITS SHALL BE INSTALLED WITHIN ISLANDS AND SHALL BE ROUTED AS DETERMINED IN THE FIELD. VERIFY ROUTING OF ALL CONDUITS PRIOR TO ROUGH-IN.
- IT SHALL BE THIS CONTRACTOR'S RESPONSIBILITY TO VERIFY EXISTING CONDITIONS IN THE FIELD PRIOR TO BID SO AS TO INFORM HIMSELF OF EXISTING CONDITIONS AFFECTING HIS BID.
- INSTALL PULL OR JUNCTION BOXES EVERY 200 FEET OR AS REQUIRED.

WALTER WEAVER INC.  
LANDSCAPE ARCHITECTS / ENVIRONMENTAL PLANNERS / GOLF COURSE ARCHITECTS  
809 COPPER AVE NE SUITE 100E ALBUQUERQUE, NEW MEXICO 87102 (505)243-3556

CLASS I CONSTRUCTION					
CITY OF ALBUQUERQUE PARKS AND GENERAL SERVICES DESIGN AND DEVELOPMENT					
TITLE: DETAILS GRISHAM PARK IMPROVEMENTS					
APPROVALS	ENGINEER	DATE	APPROVALS	ENGINEER	DATE
DRC CHAIRMAN	<i>R. W. Kone</i>	1-20-94	WATER	<i>R. W. Kone</i>	1-22-94
TRANSPORTATION	<i>N/A R.W.</i>	1-18-94	WASTE WATER	<i>R. W. Kone</i>	1-22-94
HYDROLOGY	<i>M. C. M.</i>	1-18-94			
PARKS AND REC	<i>D. S. M.</i>	1-20-94			
DESIGNED BY: WW, INC.	DATE: 12-7-93		DRAWN BY: WW, INC.	DATE: 12-7-93	
CHECKED BY: WW, INC.	DATE: 12-7-93				
PROJECT NO. 4600.90		MAP NO. G-17		SHEET 8 OF 9	





VALVE SCHEDULE					
CONTROLLER	VALVE NO.	VALVE SIZE	TOTAL GPM	HEAD TYPE	GPM
C-1	1-MV	2 1/2"	123	EXISTING	
C-1	2	2 1/2"	113	TORO G40	10.20
C-1	3	2"	92	EXISTING TORO G40	10.20
C-1	4	2"	82	EXISTING TORO G40	10.20
C-1	5	1"	10	EXISTING RB 1404	.50
C-1	6	2 1/2"	123	TORO G40	10.20
C-1	7	2"	92	EXISTING TORO G40	10.20
C-1	8	2"	102	EXISTING TORO G40	10.20
C-1	9	2 1/2"	113	TORO G40	10.20
C-1	10	2"	92	EXISTING TORO G40	10.20
C-1	11	2"	102	EXISTING TORO G40	10.20
C-1	12	2"	92	EXISTING TORO G40	10.20


LEGEND

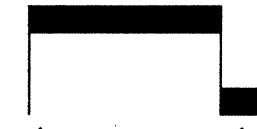
- UP WOOD UTILITY POLE
- LT WOOD UTILITY POLE W/LIGHT
- GP GUARD POST
- TS TRAFFIC SIGN
- FR FIRE HYDRANT
- WM WATER METER
- DI DROP INLET
- D TREE (DECIDUOUS)
- P OVERHEAD POWER LINE
- 25.0 ELEVATION AT NATURAL GROUND
- 25.25 ELEVATION AT TOP OF CURB/FLOW LINE
- 25.50 ELEVATION ON CONCRETE

NOTES:

- BEARINGS SHOWN ARE NEW MEXICO STATE PLANE GRID BEARINGS (CENTRAL ZONE).
- DISTANCES ARE GROUND DISTANCES.
- NO PROPERTY CORNERS SET BY THIS SURVEY.
- COORDINATES SHOWN ARE PROJECT COORDINATES BASED ON NEW MEXICO STATE PLANE COORDINATES (CENTRAL ZONE). USE GROUND TO GRID FACTOR OF 0.9999678 TO OBTAIN GRID COORDINATES.

**THIS SHEET IN CONTR**

 NORTH

 SCALE: 1" = 30'

**WALTER WE**

LANDSCAPE ARCHITECTS / ENVIRONMENTAL P

809 COPPER AVE NE SUITE 1000 ALBUQUERQUE, NM 87102


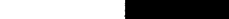
CONTROLLER	VALVE NO.	VALVE SIZE	TOTAL GPM	HEAD TYPE	GPM
C-1	1-MV	2 1/2"	123	EXISTING	
C-1	2	2 1/2"	113	TORO G40	10.20
C-1	3	2"	92	EXISTING TORO G40	10.20
C-1	4	2"	82	EXISTING TORO G40	10.20
C-1	5	1"	10	EXISTING RB 1404	.50
C-1	6	2 1/2"	123	TORO G40	10.20
C-1	7	2"	92	EXISTING TORO G40	10.20
C-1	8	2"	102	EXISTING TORO G40	10.20
C-1	9	2 1/2"	113	TORO G40	10.20
C-1	10	2"	92	EXISTING TORO G40	10.20
C-1	11	2"	102	EXISTING TORO G40	10.20
C-1	12	2"	92	EXISTING TORO G40	10.20

KEY PRODUCT DESCRIPTION

- ☒ EXISTING BERMAID FLOW METER 910-P W/ BROOKS PB-18 BODY (ABS) VALVE BOX AND FEBCO 765 2" PRESSURE VACUUM BREAKER
- ☒ RAINBIRD PEB SERIES AUTOMATIC VALVE SIZED PER PLAN WITH BROOKS 1730 PB-18 BODY (ABS) VALVE BOX
- ☒ EXISTING RAINBIRD PEB SERIES AUTOMATIC VALVE
- ☒ EXISTING RAINBIRD PEB SERIES AUTOMATIC VALVE TO BE REMOVED
- ☒ EXISTING SPEARS TRUE UNION SCHEDULE 80 PVC BALL VALVE
  - ☒ EXISTING RAINBIRD BUBBLER 1404 W/PA-80 ON 1804 POP-UP
- ☒ EXISTING TORO G44-02-41 SPRINKLER HEAD TO REMAIN
- ☒ TORO G44-02-41 SPRINKLER HEAD
  - ☒ EXISTING RAINBIRD 24V AIR RELIEF VALVE
- ☒ EXISTING HEAD TO BE REMOVED
- EXISTING MAIN LINE CLASS 200 PVC, 3' DIA.
- EXISTING LATERAL LINE SCH 40 PVC
- LATERAL LINE SCHEDULE 40 PVC SIZED PER PLAN
- EXISTING SLEEVE, CLASS 200 PVC, TWO SIZES LARGER THAN PIPE TO BE SLEEVED
- ☒ EXISTING MOTOROLLA MIR 5000 18-STATION CONTROLLER WITH STRONG BOX MODEL # SB-24-SS/MMB

1 102	— VALVE NUMBER
2'	— GALLONS PER MINUTE FOR VALVE
	— VALVE SIZE

1. REMOVE ALL IRRIGATION HEADS FROM LINES AT CURB ONLY, AND CORRESPONDING VALVES, AS SHOWN ON PLAN, AND ABANDON LATERAL LINES AT CURB.
2. ALL VALVES ON NORTH END OF PARK (SHEPARD ROAD) MUST BE LOCATED NORTH OF THE SOUTHERNMOST LINE OF EXISTING TREES (AS SHOWN ON PLAN) IN ORDER TO MAINTAIN SAFETY OF PLAY ON FIELD.
3. CONTRACTOR SHALL EXAMINE THE SITE AND FAMILIARIZE HIMSELF WITH ALL CONDITIONS PERTINENT TO THIS WORK.
4. THE CONTRACTOR WILL NOT WILLFULLY INSTALL THE IRRIGATION SYSTEM AS SHOWN ON THE PLANS WHEN IT IS OBVIOUS IN THE FIELD THAT CONDITIONS EXIST THAT MIGHT NOT HAVE BEEN CONSIDERED IN THE DESIGN OF THE SYSTEM. SUCH CONDITIONS SHOULD BE BROUGHT TO THE ATTENTION OF THE LANDSCAPE ARCHITECT. THE CONTRACTOR ASSUMES FULL RESPONSIBILITY FOR ANY REVISIONS NECESSARY.
5. IT WILL BE THE CONTRACTOR'S RESPONSIBILITY TO DETERMINE THE LOCATION OF ALL UNDERGROUND UTILITIES AND TO AVOID DAMAGE TO THE SAME.
6. IRRIGATION SYSTEM HAS BEEN DESIGNED TO AN OPERATING PRESSURE OF 50-55 PSI WITH A MAXIMUM DEMAND OF 123 GPM.
7. ACTUAL FIELD CONDITIONS MAY NECESSITATE ADDING, DELETING, OR MAKING MINOR ADJUSTMENTS IN SPACING OF HEADS TO INSURE UNIFORM COVERAGE AND DISTRIBUTION.
8. ALL VALVE BOXES TO BE PLACED NO FURTHER THAN SIX INCHES FROM NEAREST CURB, SIDEWALK, OR INDICATED PAVED SURFACE.
9. ALL POP-UP TYPE IRRIGATION HEADS INSTALLED IN LAWN AREAS SHALL BE INSTALLED SO THAT THE TOP OF THE HEAD IS LEVEL WITH FINISH GRADE AND ONE INCH FROM ADJACENT SIDEWALKS AND CURBS.
10. ALL CONTROL WIRE TO BE SOLID COPPER UL APPROVED, INSTALLED AS PER LOCAL CODE. RUNS LESS THAN 500 FEET SHALL BE #14 GAUGE. RUNS GREATER THAN 500 FEET SHALL BE #12 GAUGE WIRE. PROVIDE A 24 INCH LOOP AT EACH WIRE SPLICER OR POINT OF CONNECTION. SNAKE LINE IN TRENCHES.
11. IN AREAS WHERE TREES ARE PRESENT, TRENCH LINES WILL BE ADJUSTED ON THE SITE TO INSTALL TRENCHES BEYOND THE DRIPLINE OF THE TREE. EXISTING TREES TO REMAIN ARE TO BE PROTECTED AGAINST ROOT DAMAGE DUE TO CUTTING OR COMPACTION CAUSED BY VEHICLES PARKED OR MATERIALS STOCKPILED BENEATH DRIPLINES OF TREES.
12. CONTRACTOR IS TO INSTALL A LAMINATED VALVE LEGEND INSIDE THE CONTROLLER VAULT.
13. EXISTING PERIMETER HEADS ARE TO BE ADJUSTED DOWN SO THAT SPRAY DOES NOT OCCUR PAST SIDEWALK.
14. RELOCATE ALL EXISTING TRASH RECEPTACLES AND CONCRETE PADS FROM WITHIN NEW SIDEWALK AREA TO DIRECTLY ADJACENT TO NEW SIDEWALK.

NORTH  
 SCALE: 1" = 30'-0"

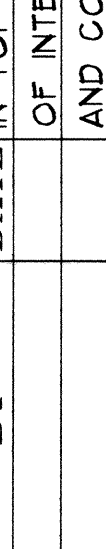
PARKS AND GENERAL SERVICES DEPARTMENT  
DESIGN AND DEVELOPMENT DEPARTMENT  
CLASS I CONSTRUCTION

CITY OF ALBUQUERQUE  
PARKS AND GENERAL SERVICES  
DESIGN AND DEVELOPMENT

TITLE: GRISHAM PARK IMPROVEMENTS

APPROVALS	ENGINEER	DATE	APPROVALS	ENGINEER	DATE
DRC CHAIRMAN	<i>S.G. Smalley</i>	1-20-94	WATER	<i>R.W. Kone</i>	1-2-94
TRANSPORTATION	<i>W.B. Kone</i>	1-8-94	WASTE WATER	<i>R.W. Kone</i>	1-2-94

PROJECT NO. 4600.90	MAP NO. G-17	SHEET 9 OF 9
---------------------	--------------	--------------

NO. DATE		REVISIONS/REMARKS	BY	LANDSCAPE ARCHITECT'S SEAL	SURVEY INFORMATION		BENCH MARK		AS BUILT INFORMATION	
					FIELD NOTES					
					NO.	BY	DATE			
								STANDARD ACS BRASS MONUMENT "7-G17" SET	CONTRACTOR	
								IN TOP OF CURB LOCATED 3.9 MILES NORTH	WORK STAKED BY	DATE:
								OF INTERSECTION OF CARULISLE BOULEVARD	INSPECTORS APPROVAL	DATE:
								AND COMANCHE ROAD. ELEVATION = 5122.99	FIELD VERIFICATION BY	DATE:
									DRAWING CORRECTED BY	DATE:
									MICRO-FILM INFORMATION	
DESIGNED BY: WW INC.									RECORDED BY	DATE:
DRAWN BY: WW INC.										
CHECKED BY: WW INC.									NO.	
DATE: 1-7-93										
DATE: 1-7-93										
DATE: 1-7-93										