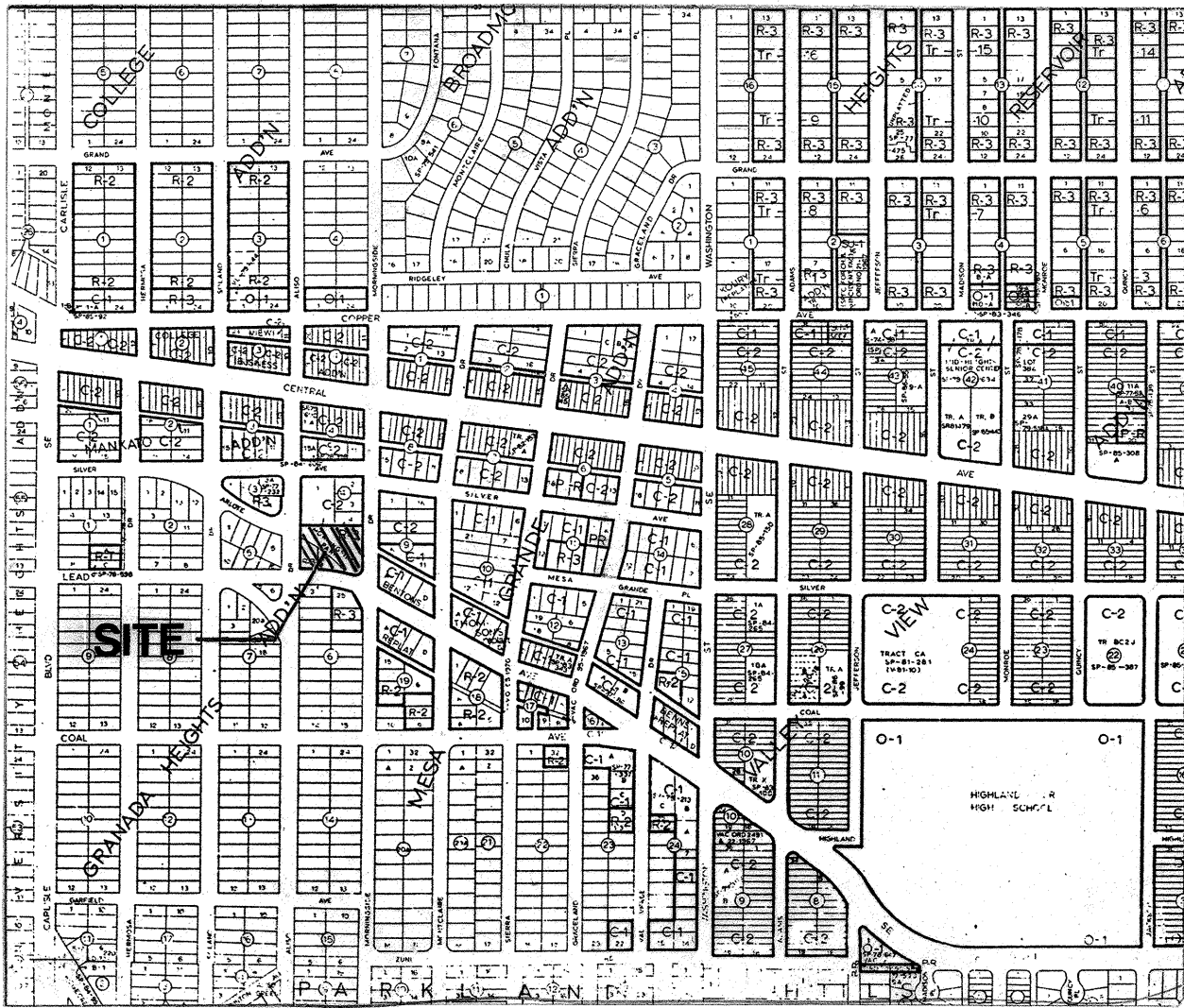


MORNINGSIDE PARK RENOVATION

299 MORNINGSIDE DRIVE SE
ALBUQUERQUE, NEW MEXICO

CLASS II CONSTRUCTION

VICINITY MAP



GENERAL NOTES

- ALL WORK ON THESE PLANS TO BE PERFORMED UNDER CONTRACT, EXCEPT AS OTHERWISE STATED OR PROVIDED HEREIN. SHALL BE CONSTRUCTED IN ACCORDANCE WITH THE CITY OF ALBUQUERQUE STANDARD SPECIFICATIONS - PUBLIC WORKS CONSTRUCTION - 1986 EDITION, AS AMENDED THROUGH UPDATE #5.
- TWO (2) WORKING DAYS PRIOR TO ANY EXCAVATION, THE CONTRACTOR MUST CONTACT NEW MEXICO ONE CALL SYSTEM, 260-1990, FOR LOCATION INFORMATION OF EXISTING UTILITIES.
- IF ANY UTILITY LINES, PIPELINES, OR UNDERGROUND UTILITY LINES ARE SHOWN ON THESE DRAWINGS THEY ARE SHOWN IN AN APPROXIMATE MANNER ONLY, AND SUCH LINES MAY EXIST WHERE NONE ARE SHOWN. IF ANY SUCH EXISTING LINES ARE SHOWN, THE LOCATION IS BASED ON INFORMATION PROVIDED BY THE OWNER OF SAID UTILITY, AND THE INFORMATION MAY BE INCOMPLETE, OR MAY BE OBSOLETE BY THE TIME CONSTRUCTION COMMENCES. THE LANDSCAPE ARCHITECT HAS CONDUCTED ONLY PRELIMINARY INVESTIGATION OF THE LOCATION, DEPTH, SIZE, OR TYPE OF EXISTING UTILITY LINES, PIPELINES OR UNDERGROUND UTILITY LINES. THIS INVESTIGATION IS NOT CONCLUSIVE, AND MAY NOT BE COMPLETE, THEREFORE, MAKES NO REPRESENTATION PERTAINING THERETO, AND ASSUMES NO RESPONSIBILITY OR LIABILITY. THEREFORE THE CONTRACTOR SHALL INFORM ITSELF OF THE LOCATION OF ANY UTILITY LINES, PIPELINES, OR UNDERGROUND UTILITY LINE IN OR NEAR THE AREA OF THE WORK IN ADVANCE OF AND DURING EXCAVATION WORK. THE CONTRACTOR IS FULLY RESPONSIBLE FOR ANY AND ALL DAMAGE CAUSED BY ITS FAILURE TO LOCATE, IDENTIFY AND PRESERVE ANY AND ALL EXISTING UTILITIES, PIPELINES, AND UNDERGROUND LINE. IN PLANNING AND CONDUCTING EXCAVATION, THE CONTRACTOR SHALL COMPLY WITH STATE STATUTES, MUNICIPAL AND LOCAL ORDINANCES, RULES AND REGULATIONS, IF ANY, PERTAINING TO THE LOCATION OF THESE UTILITY LINES AND FACILITIES.
- SHOULD A CONFLICT EXIST BETWEEN THESE PLANS AND THE ACTUAL FIELD CONDITIONS, THE CONTRACTOR SHALL PROMPTLY NOTIFY THE LANDSCAPE ARCHITECT IN WRITING SO THAT THE CONFLICT CAN BE RESOLVED WITH THE MINIMUM AMOUNT OF DELAY FOR ALL PARTIES.
- THE CONTRACTOR SHALL MAINTAIN ACCESS TO ADJACENT PROPERTIES DURING CONSTRUCTION.
- ALL WORK ON THIS PROJECT SHALL BE PERFORMED IN ACCORDANCE WITH THE APPLICABLE FEDERAL, STATE AND LOCAL LAWS, RULES AND REGULATIONS CONCERNING SAFETY AND HEALTH.
- ALL UTILITIES AND UTILITY SERVICE LINES SHALL BE INSTALLED PRIOR TO PAVING.
- BACKFILL COMPACTION SHALL BE ACCORDING TO SPECIFIED STREET USE.
- TACK COAT REQUIREMENTS SHALL BE DETERMINED DURING CONSTRUCTION BY THE LANDSCAPE ARCHITECT.
- SIDEWALK AND WHEELCHAIR RAMPS WITHIN THE CURB RETURNS SHALL BE CONSTRUCTED WHEREVER A NEW CURB RETURN IS CONSTRUCTED.
- IF CURB IS DEPRESSED FOR DRIVEPAD OR HANDICAP RAMP, THE DRIVEPAD OR RAMP SHALL BE CONSTRUCTED PRIOR TO ACCEPTANCE OF THE CURB AND GUTTER.
- ALL STORM DRAINAGE FACILITIES SHALL BE COMPLETED PRIOR TO FINAL ACCEPTANCE.
- CONTRACTOR SHALL COORDINATE WITH THE WATER SYSTEM DIVISION FOR THE EXECUTION OF THE VALVE SHUT OFF PLAN, NOT LESS THAN FIVE (5) WORKING DAYS IN ADVANCE OF ANY WORK THAT MAY AFFECT THE EXISTING PUBLIC WATER UTILITIES. ONLY WATER SYSTEM PERSONNEL SHALL OPERATE EXISTING VALVES, REFER TO SECTION 18 OF THE SPECIFICATIONS.
- CONTRACTOR SHALL NOTIFY CITY SURVEYING NOT LESS THAN SEVEN (7) DAYS PRIOR TO STARTING WORK IN ORDER THAT CITY SURVEYING MAY TAKE NECESSARY MEASURES TO INSURE THE PRESERVATION OF SURVEY MONUMENTS. CONTRACTOR SHALL NOT DISTURB PERMANENT SURVEY MONUMENTS WITHOUT THE CONSENT AND PERMISSION OF CITY SURVEYING. REPLACEMENT SHALL BE DONE ONLY BY CITY SURVEYING. WHEN A CHANGE IS MADE IN THE FINISHED ELEVATION OF THE PAVEMENT OF ANY ROADWAY IN WHICH A PERMANENT SURVEY MONUMENT IS LOCATED, CONTRACTOR SHALL, AT ITS OWN EXPENSE, ADJUST THE MONUMENT AND ITS COVER TO THE NEW GRADE UNLESS OTHERWISE SPECIFIED. REFER TO SECTION 4.4 OF THE SPECIFICATIONS.
- THREE (3) WORKING DAYS PRIOR TO BEGINNING CONSTRUCTION, THE CONTRACTOR SHALL SUBMIT TO THE CONSTRUCTION COORDINATION DIVISION, A DETAILED CONSTRUCTION SCHEDULE TWO (2) DAYS PRIOR TO CONSTRUCTION. THE CONTRACTOR SHALL OBTAIN A BARRICADE PERMIT FROM THE CONSTRUCTION COORDINATION DIVISION. CONTRACTOR SHALL NOTIFY BARRICADE ENGINEER (768-2551) PRIOR TO OCCUPYING AN INTERSECTION. CONTRACTOR MUST REFER TO SECTION 19 OF THE STANDARD SPECIFICATIONS FOR TRAFFIC CONTROL.
- ALL STREET STRIPING ALTERED OR DESTROYED SHALL BE REPLACED IN KIND BY CONTRACTOR TO LOCATION AND IN KIND AS EXISTING OR AS INDICATED BY THIS PLAN SET.
- CAUTION, THESE DRAWINGS DO NOT INCLUDE NECESSARY COMPONENTS FOR CONSTRUCTION SAFETY WHICH SHALL REMAIN THE RESPONSIBILITY OF THE CONTRACTOR.

INDEX OF DRAWINGS	
SHEET TITLE	SHEET NUMBER
COVER SHEET	1
SURVEY	2
DEMOLITION PLAN	3
ALISO DRIVE GEOMETRY AND PROFILE	4
GRADING PLAN	5
DIMENSION PLAN	6
CONSTRUCTION PLAN	7
IRRIGATION PLAN	8
PLANTING PLAN	9
ELECTRICAL PLAN	10
DETAILS	11

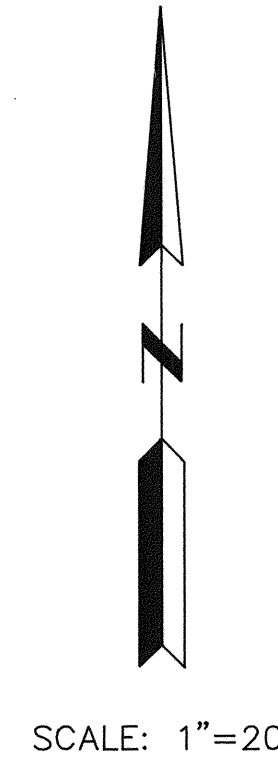
CONSULTANTS	
CHAVEZ GRIEVES, CONSULTING ENGINEERS	CIVIL ENGINEERING
ANDREWS ASBURY AND ROBERT, INC.	SURVEY
P ₂ RS	ELECTRICAL ENGINEERING

MORROW & COMPANY, LTD.
LANDSCAPE ARCHITECTS
210 La Veta N.E.
Albuquerque, N.M. 87108
PH: 505 265-2266 FAX: 505 265-9657

AS BUILT INFORMATION	
CONTRACTOR	
WORK STAKED BY	DATE
INSPECTOR'S ACCEPTANCE BY	DATE
FIELD VERIFIED BY	DATE
DRAWINGS CORRECTED BY	DATE
MICRO-FILM INFORMATION	
RECORDED BY	DATE
NO.	

REV.	SHEETS	CITY ENGINEER	DATE	USER DEPT.	DATE	USER DEPT.	DATE
------	--------	---------------	------	------------	------	------------	------

CITY OF ALBUQUERQUE		APPROVED OF CONSTRUCTION
PROJECT NO. 4615.90		<i>J. L. Lopez for Randy Roybal</i> CITY ENGINEER 3-2-95
SHEET 1 OF 11		



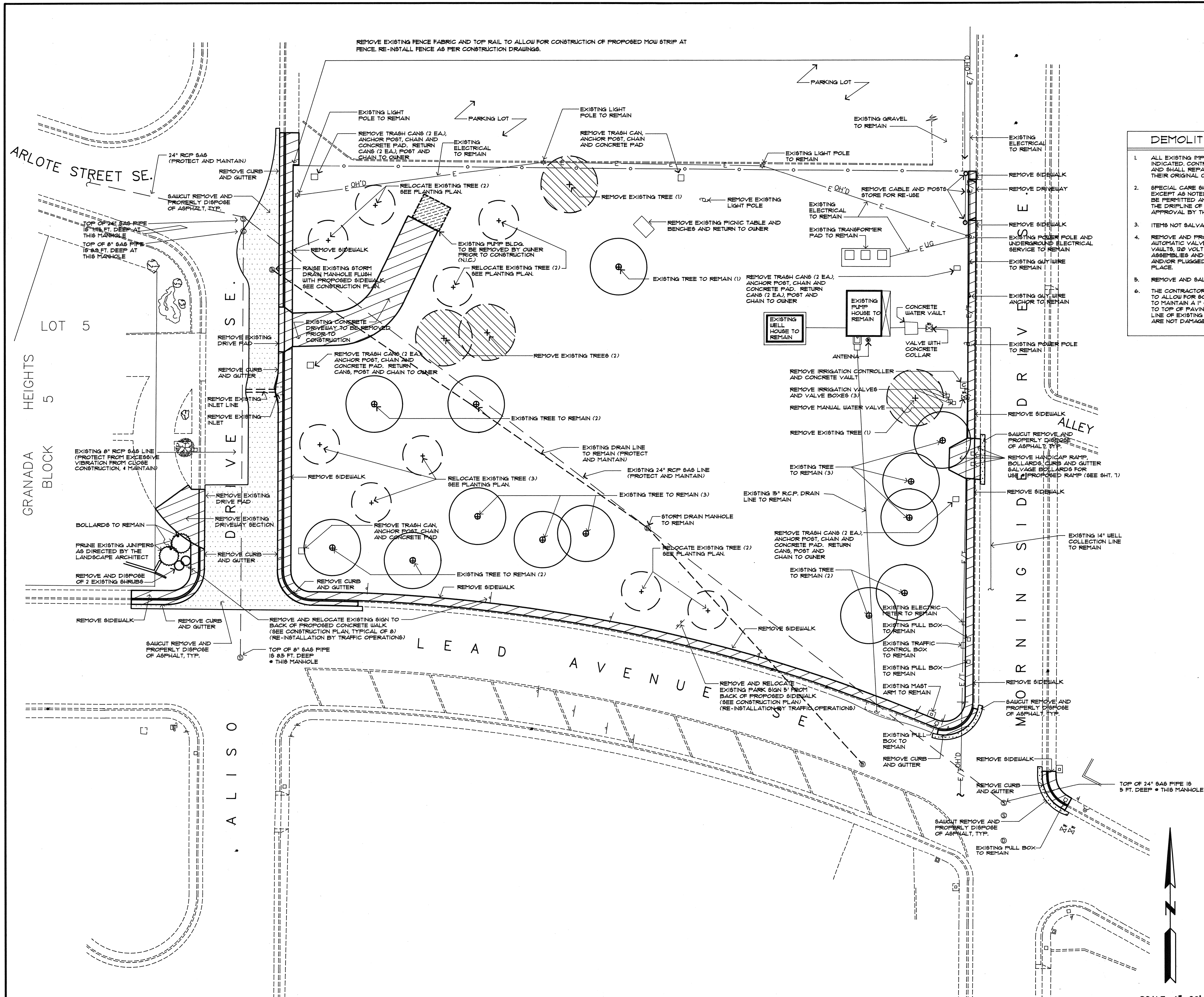
- LEGEND**
- TRAFFIC SIGN
 - WATER VALVE
 - LIGHT POLE (WOODEN)
 - POWER POLE
 - DROP INLET
 - SANITARY SEWER MANHOLE
 - STORM DRAIN MANHOLE
 - E OH'D ELECTRIC LINE OVERHEAD
 - E UG ELECTRIC LINE UNDERGROUND
 - T OH'D TELEPHONE LINE OVERHEAD
 - 4' CHAIN LINK FENCE
 - TRASH CAN ON CONC. PAD
 - BUILDING
 - JUNIPER 1.0' DIA.
 - ASH 1.3' DIA.
 - SPRINKLER W/SPOT ELEVATION
 - CURB & GUTTER
 - CONC. PAD/SIDEWALK
 - SPOT ELEVATION/NATURAL GROUND
 - SPOT ELEVATION/TOP OF CURB
 - CONTOURS
 - WM WATER METER

ANDREWS, ASBURY, & ROBERT, INC.
ALBUQUERQUE CONSULTING ENGINEERS NEW MEXICO

MORROW & COMPANY, LTD.
LANDSCAPE ARCHITECTS
210 La Veta, N.E.
Albuquerque, N.M. 87109
PH: 505 266-2266 FAX: 505 266-9857

CITY OF ALBUQUERQUE PARKS AND GENERAL SERVICES DESIGN & DEVELOPMENT					
TITLE: MORNINGSIDE PARK					
SURVEY					
APPROVALS	ENGINEER	DATE	APPROVALS	ENGINEER	DATE
DRC CHAIRMAN	<i>B. L. Kelly</i>	3-7-95	WATER	<i>N. Adams</i>	
TRANSPORTATION	<i>N. Adams</i>	3-27-95	WASTE WATER		
HYDROLOGY	<i>C. M. Smith</i>	3-7-95			
<i>Parks</i>	<i>D. Smith</i>	3-6-95			
PROJECT NO.	4615.80	MAP NO.	K-17-Z	SHEET	2 OF 11

AS BUILT INFORMATION			BENCH MARKS			SURVEY INFORMATION			ENGINEER'S SEAL		
CONTRACTOR	DATE	NO.	A.C.S. STA. "7-K17"	DATE	NO.	BY	DATE	NO.	BY	DATE	NO.
WORK BY	DATE	NO.	A 3 1/4" ALUMINUM TABLET SET FLUSH WITH THE TOP OF CURB AT THE NORTHWEST CORNER OF LEAD AVE. SE. & MORNINGSIDE DR. SE.	DATE	NO.	BY	DATE	BY	DATE	NO.	DATE
FIELD VERIFICATION BY	DATE	NO.	ELEVATION 5213.504	DATE	NO.	BY	DATE	REVISIONS	DESIGN	DATE	NO.
DRAWINGS CORRECTED BY	DATE	NO.		DATE	NO.	BY	DATE	DESIGNED BY	BHM	DATE	NO.
RECORDED BY	DATE	NO.		DATE	NO.	BY	DATE	DRAWN BY	TLCE/RS	DATE	NO.
	DATE	NO.		DATE	NO.	BY	DATE	CHECKED BY	ECR	DATE	NO.

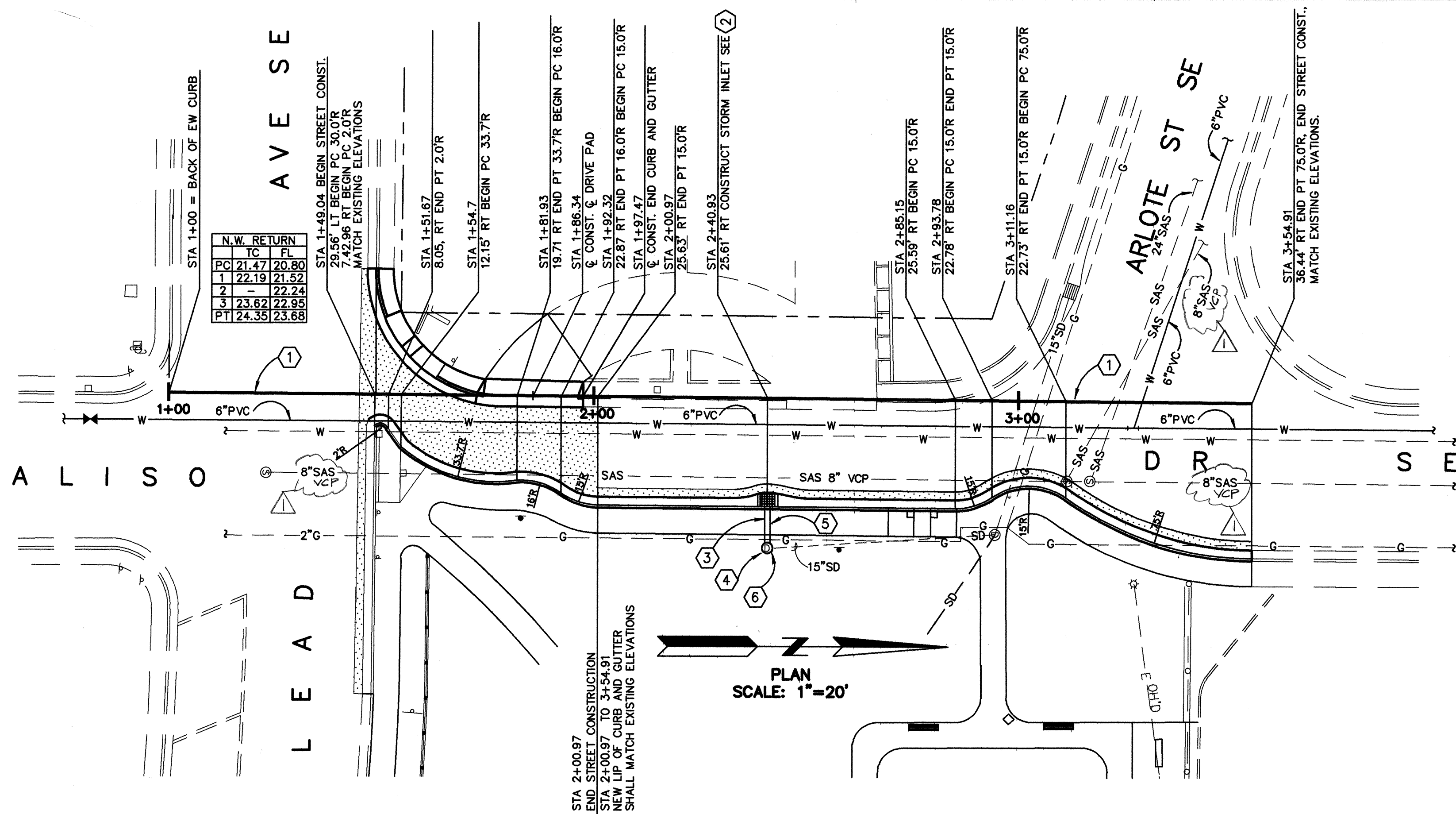


- DEMOLITION NOTES:**
1. ALL EXISTING IMPROVEMENTS ARE TO REMAIN UNLESS OTHERWISE INDICATED. CONTRACTOR SHALL PROTECT EXISTING IMPROVEMENTS AND SHALL REPAIR ITEMS DAMAGED DURING CONSTRUCTION TO THEIR ORIGINAL CONDITION.
 2. SPECIAL CARE SHALL BE TAKEN NOT TO DAMAGE EXISTING TREES EXCEPT AS NOTED ON THE PLANS. NO ALTERATION OF GRADE SHALL BE PERMITTED AND NO COMPACTION SHALL BE PERMITTED WITHIN THE DRIPLINE OF TREES WHICH ARE TO REMAIN WITHOUT PRIOR APPROVAL BY THE LANDSCAPE ARCHITECT.
 3. ITEMS NOT SALVAGED SHALL BE PROPERLY DISPOSED OF.
 4. REMOVE AND PROPERLY DISPOSE OF ALL EXISTING MANUAL VALVES, AUTOMATIC VALVES, BACKFLOW PREVENTERS, RISERS, CONTROLLERS, VAULTS, 120 VOLT CONDUIT AND CONDUCTORS, MANUAL DRAIN ASSEMBLIES AND VALVE BOXES. EXISTING PIPING SHALL BE CAPPED AND/OR PLUGGED WITH APPROPRIATE FITTINGS AND ABANDONED IN PLACE.
 5. REMOVE AND SALVAGE ALL SPRINKLER HEADS AND BUBBLER HEADS.
 6. THE CONTRACTOR SHALL REMOVE EXISTING TURF AND SOIL TO ALLOW FOR SOIL AMENDMENTS, TILLING, ETC. AS REQUIRED TO MAINTAIN A 1" CLEARANCE FROM TOP OF FINISH GRADE TO TOP OF PAVING. SPECIAL CARE SHALL BE TAKEN WITHIN THE DRIP LINE OF EXISTING TREES TO REMAIN TO ENSURE THAT EXISTING ROOTS ARE NOT DAMAGED. SEE NOTE 2.

AS BUILT INFORMATION				BENCH MARKS				SURVEY INFORMATION				ENGINEER'S SEAL			
CONTRACTOR	DATE	BY	NO.	CONTRACTOR	DATE	BY	NO.	DATE	BY	NO.	DATE				
WORKS BY	DATE	INSPECTED BY	DATE	FIELD NOTES	DATE	BY	NO.								
ACCEPTANCE BY	DATE	VERIFICATION BY	DATE												
DRAWINGS CORRECTED BY	DATE														
RECORDED BY	DATE														

MORROW & COMPANY, LTD.
LANDSCAPE ARCHITECTS
210 La Veta N.E.
Albuquerque, N.M. 87102
PH: 505 288-2266 FAX: 505 285-9637

CITY OF ALBUQUERQUE PARKS AND GENERAL SERVICES DESIGN & DEVELOPMENT					
TITLE: MORNINGSIDE PARK					
DEMOLITION PLAN					
APPROVALS	ENGINEER	DATE	APPROVALS	ENGINEER	DATE
DRC CHAIRMAN	<i>[Signature]</i>	3-7-95	WATER	<i>[Signature]</i>	2/95
TRANSPORTATION	<i>[Signature]</i>	3-07-95	WASTE WATER		
HYDROLOGY	<i>[Signature]</i>	2-7-95			
PLANTS	<i>[Signature]</i>	3-6-95			
PROJECT NO.	4615.90	MAP NO.	K-17-Z	SHEET	3 OF 11



SCALE
HORIZ. 1"=20'
VERT. 1"=4'

NOTICE TO CONTRACTOR

1. AN EXCAVATION/CONSTRUCTION PERMIT WILL BE REQUIRED BEFORE BEGINNING ANY WORK WITHIN CITY RIGHT OF WAY. AN APPROVED COPY OF THESE PLANS MUST BE SUBMITTED AT THE TIME OF APPLICATION FOR THIS PERMIT.
2. ALL WORK DETAILED ON THESE PLANS TO BE PERFORMED UNDER CONTRACT SHALL, EXCEPT AS OTHERWISE STATED OR PROVIDED FOR HEREON, BE CONSTRUCTED IN ACCORD. WITH C.O.A. STD. SPECIFICATIONS FOR PUBLIC WORKS CONSTRUCTION 1986, INCLUDING ALL UPDATES REFERENCE MADE TO DWGS. REFER TO C.O.A. STD. DWGS.
3. TWO (2) WORKING DAYS PRIOR TO ANY EXCAVATION, THE CONTRACTOR MUST CONTACT LINE LOCATING SERVICE 260-1990, FOR LOCATION OF EXISTING UTILITIES.
4. PRIOR TO CONSTRUCTION, THE CONTRACTOR SHALL EXCAVATE AND VERIFY THE HORIZONTAL AND VERTICAL LOCATIONS OF ALL OBSTRUCTIONS. SHOULD A CONFLICT EXIST, THE CONTRACTOR SHALL NOTIFY THE ENGINEER OR SURVEYOR SO THAT THE CONFLICT CAN BE RESOLVED WITH MINIMUM AMOUNT OF DELAY.
5. THREE (3) WORKING DAYS PRIOR TO BEGINNING CONST. THE CONTRACTOR SHALL SUBMIT TO THE CONSTRUCTION COORDINATION DIVISION A DETAILED CONSTRUCTION SCHEDULE. TWO (2) WORKING DAYS PRIOR TO CONSTRUCTION THE CONTRACTOR SHALL OBTAIN A BARRICADING PERMIT FROM THE CONSTRUCTION COORDINATION DIVISION. CONTRACTOR SHALL NOTIFY BARRICADE ENGINEER (768-2551) PRIOR TO OCCUPYING AN INTERSECTION. ALL STREET STRIPING ALTERED OR DESTROYED SHALL BE REPLACED TO LOCATION AND IN KIND AS EXISTING OR AS INDICATED BY THIS PLAN SET.

THE FOLLOWING NOTES ALSO APPLY WHEN CHECKED

- ALL UTILITIES AND UTILITY SERVICE LINES SHALL BE INSTALLED PRIOR TO PAVING.
- BACKFILL COMPACTION SHALL BE ACCORDING TO ARTERIAL STREET USE.
- TACK COAT REQUIREMENTS SHALL BE DETERMINED BY THE CITY ENGINEER.
- SIDEWALKS AND WHEELCHAIR RAMPS WITHIN THE CURB RETURNS SHALL BE CONSTRUCTED WHEREVER A NEW CURB RETURN IS CONSTRUCTED.
- IF CURB IS DEPRESSED FOR A DRIVEPAD OR A HANDICAP RAMP, THE DRIVEPAD OR RAMP SHALL BE CONSTRUCTED PRIOR TO ACCEPTANCE OF THE CURB AND GUTTER.
- ALL STORM DRAINAGE FACILITIES SHALL BE COMPLETED PRIOR TO FINAL ACCEPTANCE.

KEYED NOTES

1. CONSTRUCTION BASE LINE=BACK OF CURB WEST SIDE ALISO STREET.
2. CONSTRUCT STORM INLET SINGLE "C" IN ACCORDANCE WITH C.O.A. STD. DWG. 2425.
3. CONSTRUCT 8 LF OF 16" DIP CLASS 50 STORM DRAIN LINE, AT 1% MINIMUM SLOPE.
4. CONSTRUCT NEW 4" I.D. STORM DRAIN MANHOLE TYPE "C" IN ACCORDANCE WITH C.O.A. STANDARD DRAWING 2101.
5. PRIOR TO ANY CONSTRUCTION ACTIVITY CONTRACTOR SHALL VERIFY (HAND DIG) LOCATIONS OF ALL EXISTING UTILITIES. EXISTING GAS LINE MAY REQUIRE RELOCATION TO CLEAR STORM DRAIN LATERAL. COORDINATE WITH GAS COMPANY. ALL COSTS ASSOCIATED WITH RELOCATION SHALL BE AT CONTRACTORS EXPENSE.
6. REMOVE EXISTING SINGLE "C" INLET. DO NOT DAMAGE EXISTING STORM DRAIN LATERAL. REUSE FRAME AND GRATE ON NEW INLET (SEE NOTE 2 ABOVE).

CONSTRUCTION NOTES

- A. FOR ALL REFERENCE TO CONSTRUCTION ITEMS SEE SHEET 7 OF 11.
- B. OFFSETS ARE FROM CONST. BASE LINE TO NEW FACE OF CURB. RADI ARE TO FACE OF NEW CURB.
- C. FLOW LINE OF CURB & GUTTER IS 8" BELOW TOP OF CURB (TC) ELEVATION UNLESS OTHERWISE SHOWN.
- D. CONTRACTOR SHALL ADJUST ALL MANHOLE FRAME & COVERS AND WATER VALVE BOXES TO FINISH GRADE.
- E. DESIGN IS BASED ON TOPOGRAPHIC SURVEY PROVIDED BY ANDREWS, ASBURY & ROBERT. IF CONDITIONS VARY FROM THOSE SHOWN, CONTRACTOR SHALL OBTAIN CLARIFICATION FROM ENGINEER PRIOR TO PROCEEDING.

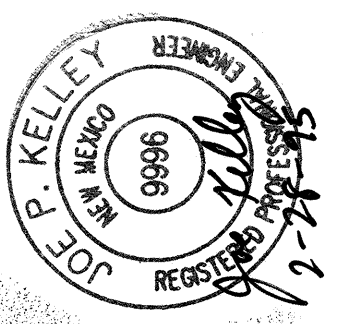
LEGEND

- TRAFFIC SIGN
- WATER VALVE
- LIGHT POLE (WOODEN)
- POWER POLE
- DROP INLET
- NEW DROP INLET
- WATER METER
- SANITARY SEWER MANHOLE
- STORM DRAIN MANHOLE
- ELECTRIC LINE OVERHEAD
- ELECTRIC LINE UNDERGROUND
- CURB & GUTTER
- NEW CURB & GUTTER
- CONC. PAD/SIDEWALK
- NEW ASPHALT
- GAS LINE
- STORM DRAIN LINE
- SANITARY SEWER LINE

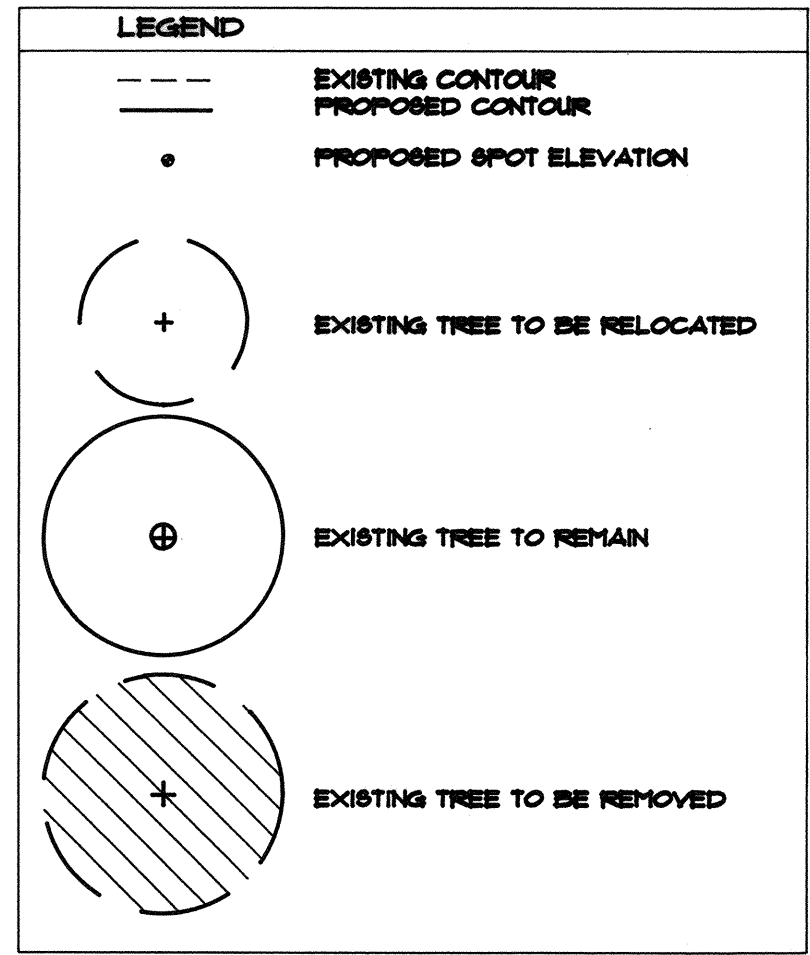
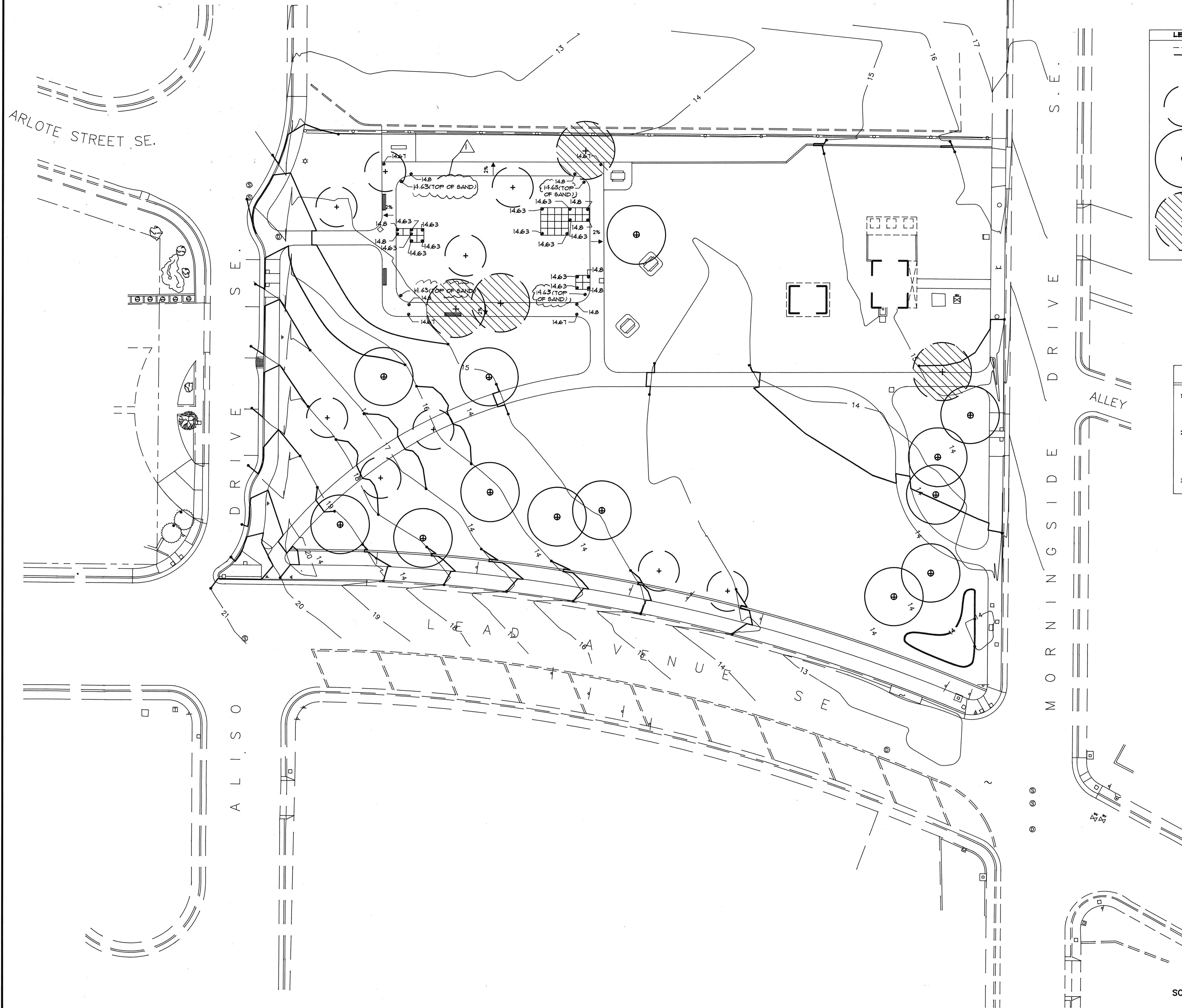
ABBREVIATIONS

- TC = TOP OF CURB
- FL = FLOWLINE
- TC = TOP OF GRATE
- INV = INVERT ELEVATION
- DIP = DUCTILE IRON PIPE
- SD = STORM DRAIN
- TS = TOP OF SIDEWALK
- FG = FINISHED GROUND
- HI PT = HIGH POINT
- LF = LINEAR FEET
- TYP = TYPICAL
- STA = STATION
- R = RADIUS

AS BUILT INFORMATION				BENCH MARKS				SURVEY INFORMATION				ENGINEER'S SEAL			
CONTRACTOR	DATE	DATE	DATE	ACS STA. 7+K17	DATE	DATE	DATE	NO.	BY	DATE	DATE	NO.	BY	DATE	DATE
INSPECTOR	DATE	DATE	DATE	A 3 1/4" ALUMINUM TABLET SET FLUSH WITH THE TOP OF CURB AT THE NORTHWEST CORNER OF LEAD AVE.	ANDREWS, ASBURY & ROBERT	1-92									
VERIFICATION BY	DATE	DATE	DATE	SE ELEVATION=5213.504.											
RECORDING BY	DATE	DATE	DATE												
RECORDING BY	DATE	DATE	DATE												



CITY OF ALBUQUERQUE PARKS/GENERAL SERVICES DEPARTMENT						
TITLE: MORNINGSIDE PARK ALISO DRIVE GEOMETRY AND PROFILE						
APPROVALS	ENGINEER	DATE	APPROVALS	ENGINEER	DATE	
DRC CHAIRMAN	B. G. Smith	3-7-95	WATER	Roger Green	3/6/95	
TRANSPORTATION	H. Smith	3-07-95	WASTE WATER	"	"	
HYDROLOGY	C. Smith	3-7-95				
PARKS	D. Smith	3-6-95				
PROJECT NO. 461590		MAP NO. K-17-Z		SHEET 4 OF 11		



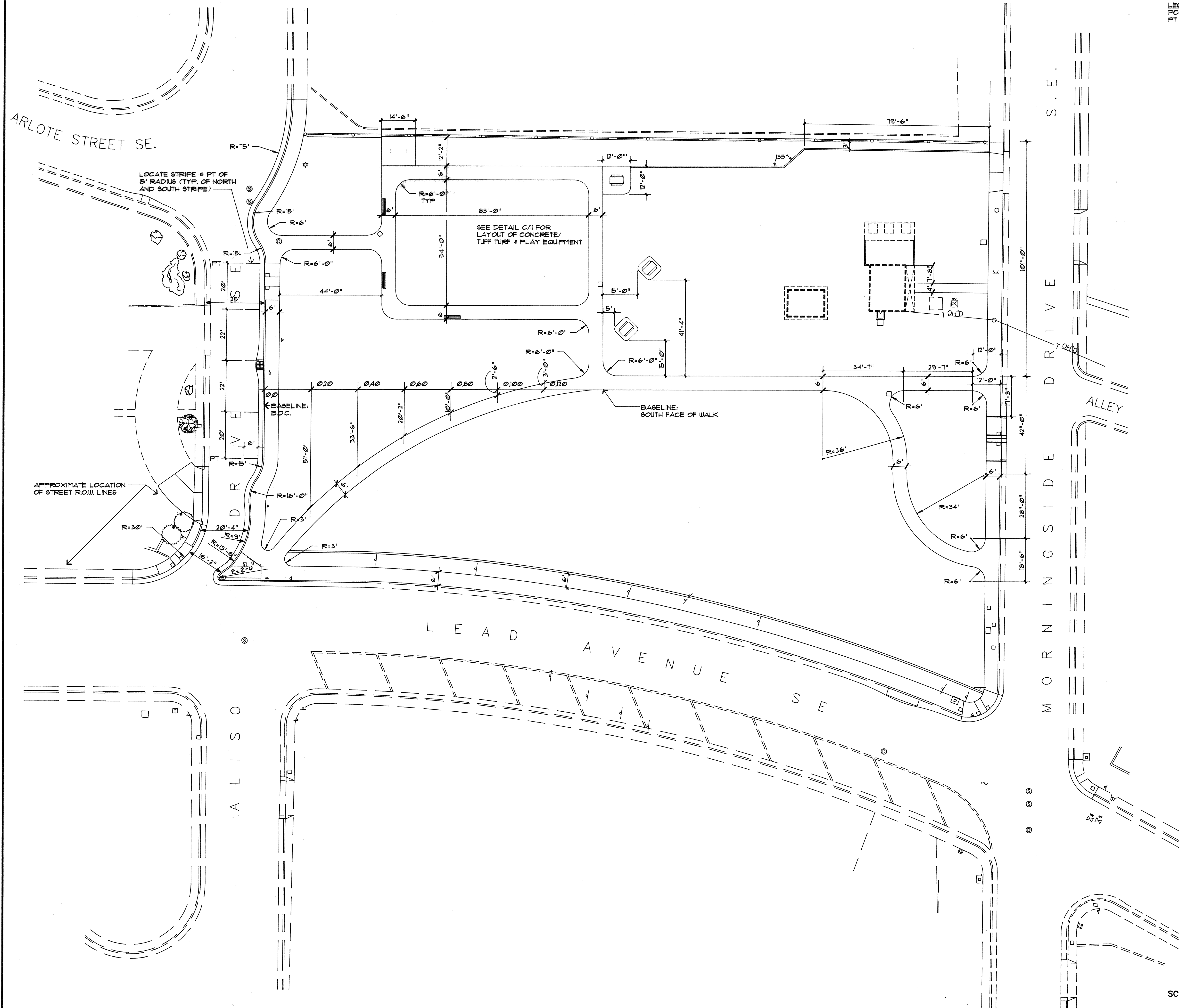
- NOTES:**
- SPECIAL CARE SHALL BE TAKEN NOT TO DAMAGE EXISTING TREES EXCEPT AS NOTED ON THE PLANS. NO ALTERATION OF GRADE SHALL BE PERMITTED AND NO COMPACTION SHALL BE PERMITTED WITHIN THE DRIP LINE OF TREES WHICH ARE TO REMAIN WITHOUT PRIOR APPROVAL BY THE LANDSCAPE ARCHITECT.
 - THE CONTRACTOR SHALL REMOVE EXISTING TURF AND SOIL TO ALLOW FOR SOIL AMENDMENTS, TILLING, ETC. AS REQUIRED TO MAINTAIN A 1' CLEARANCE FROM TOP OF FINISH GRADE TO TOP OF PAVING. SPECIAL CARE SHALL BE TAKEN WITHIN THE DRIP LINE OF EXISTING TREES TO REMAIN TO ENSURE THAT EXISTING ROOTS ARE NOT DAMAGED. SEE NOTE 1.
 - ESTIMATED FILL REQUIRED FOR PROJECT: 10 CY.

MORROW & COMPANY, LTD.
LANDSCAPE ARCHITECTS
210 La Veta N.E.
Albuquerque, N.M. 87106
TEL: 505 265-2246 FAX: 505 265-9437

CITY OF ALBUQUERQUE PARKS AND GENERAL SERVICES DESIGN & DEVELOPMENT					
TITLE: MORNINGSIDE PARK					
GRADING PLAN					
APPROVALS	ENGINEER	DATE	APPROVALS	ENGINEER	DATE
DRC CHAIRMAN	<i>[Signature]</i>	3-7-95	WATER	<i>[Signature]</i>	
TRANSPORTATION	<i>[Signature]</i>	3-7-95	WASTE WATER		
HYDROLOGY	<i>[Signature]</i>	3-7-95			
PROJECT NO.	4615.90	MAP NO.	K-17-Z	SHEET	5 OF 11



SURVEY INFORMATION		BENCH MARKS		AS BUILT INFORMATION	
NO.	BY	DATE	ASC STA. "K-K17"	CONTRACTOR	DATE
				WORK STAKED BY	DATE
				FIELD ACCEPTANCE BY	DATE
				FIELD CORRECTION BY	DATE
				REVISIONS	DATE
				DESIGNED BY	DATE
				DRAWN BY	DATE
				CHECKED BY	DATE
				RECORDED BY	DATE
				NO.	DATE



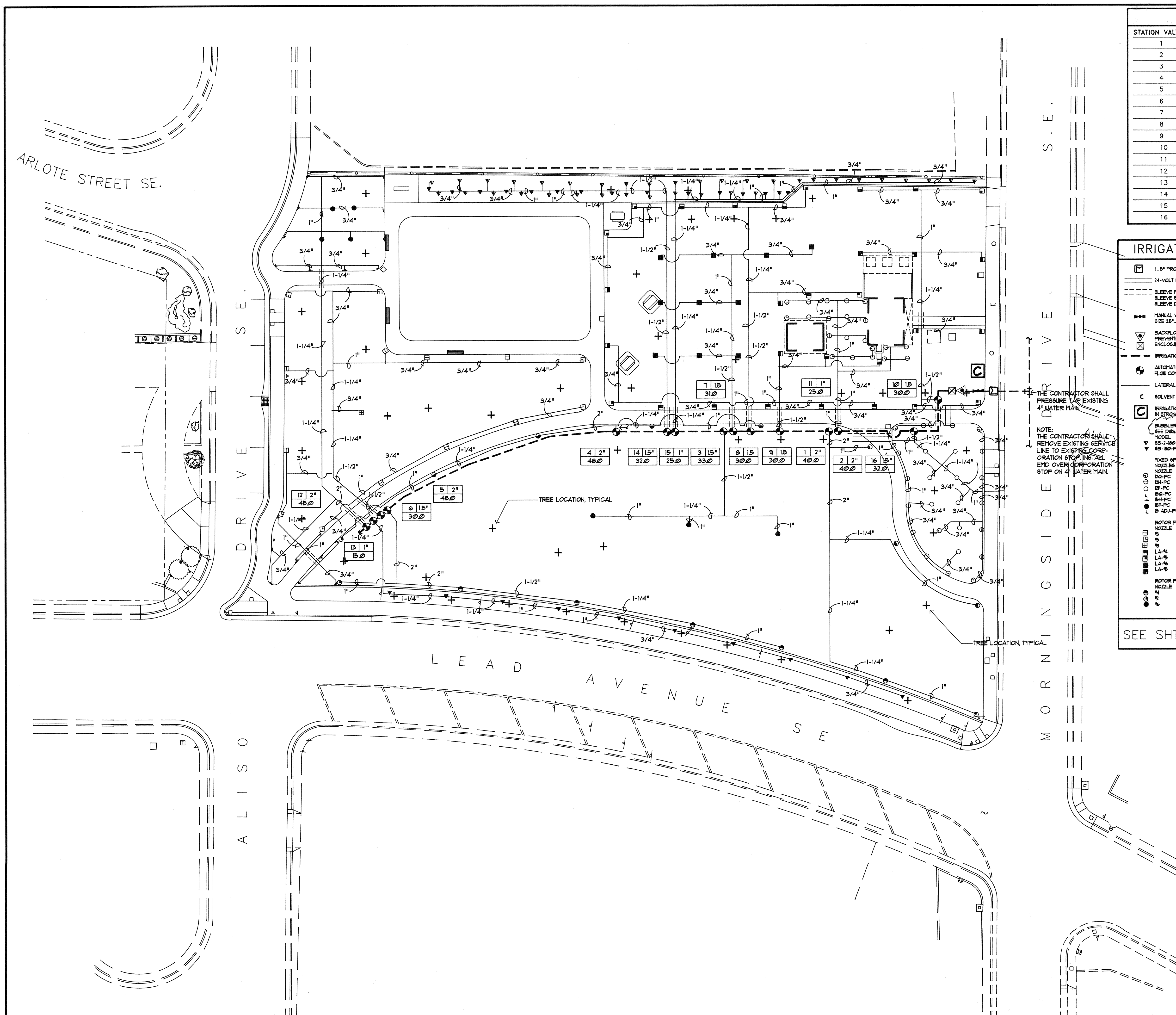
LEGEND
 PCC POINT OF COMPOUND CURVE
 PT POINT OF TANGENCY

SCALE: 1"=20'

MORROW & COMPANY, LTD.
 LANDSCAPE ARCHITECTS
 210 La Veta N.E.
 Albuquerque, N.M. 87108
 PH: 505 268-2266 FAX: 505 265-9637

CITY OF ALBUQUERQUE PARKS AND GENERAL SERVICES DESIGN & DEVELOPMENT					
TITLE: MORNINGSIDE PARK					
DIMENSION PLAN					
APPROVALS	ENGINEER	DATE	APPROVALS	ENGINEER	DATE
DRC CHAIRMAN	<i>[Signature]</i>	3-7-95	WATER	<i>[Signature]</i>	3-7-95
TRANSPORTATION	<i>[Signature]</i>	3-7-95	WASTE WATER		
HYDROLOGY	<i>[Signature]</i>	3-7-95			
	<i>[Signature]</i>	3-6-95			
PROJECT NO.	4915.90		MAP NO.	K-17-Z	
			SHEET	6 OF 11	

ENGINEER'S SEAL			SURVEY INFORMATION			BENCH MARKS			AS BUILT INFORMATION		
			FIELD NOTES								
			NO.	BY	DATE						
			REMARKS								
			NO.	DATE	BY						
			DESIGN								
			DESIGNED BY	BHM	DATE						
			SL/RHT								
			DRAWN BY	SL/RHT	DATE						
			ECR								
			CHECKED BY	ECR	DATE						
			MICRO-FILM INFORMATION								
			RECORDED BY	NO.	DATE						



WATER MANAGEMENT GUIDE				
STATION	VALVE NO.	VALVE SIZE	TOTAL GPM	HEAD TYPE AREA TYPE
1	1	2"	40.0	I-25-ADS TURF
2	2	2"	40.0	I-25-ADS TURF
3	3	2"	40.0	I-25-ADS TURF
4	4	2"	40.0	I-25-ADS TURF
5	5	2"	40.0	I-25-ADS TURF
6	6	1.5"	30.0	I-20-ADS TURF
7	7	1.5"	31.0	I-20-ADS TURF
8	8	1.5"	30.0	I-20-ADS TURF
9	9	1.5"	30.0	I-20-ADS TURF
10	10	1.5"	30.0	I-20-ADS TURF
11	11	1"	25.0	570-Z TURF
12	12	2"	45.0	570-Z TURF
13	13	1"	15.0	570-Z TREES
14	14	1.5"	32.0	570-Z TREE/SHRUB
15	15	1"	25.0	570-Z TREE/SHRUB
16	16	1.5"	32.0	570-Z TURF

IRRIGATION LEGEND

1. 5" PROPOSED WATER METER AND 1. 5" TAP.

24-VOLT WIRE SLEEVES, SIZE 2".

SLEEVE PIPING FOR LATERALS AND IRRIGATION MAIN LINE, CLASS 300 SDP-31, SOLVENT WELD PVC. SLEEVE SHALL BE TWO SIZES LARGER THAN PIPE TO BE SLEEVE DEPTH FOR LATERALS SHALL BE 18" SLEEVE DEPTH FOR IRRIGATION MAIN LINE SHALL BE 36".

MANUAL VALVE ASSEMBLY, FISCO B-40 BRONZE BODY GATE VALVE WITH CROSS HANDLE SIZE 2 1/2". SEE DIAG. 2101.

BACKFLOW PREVENTER ASSEMBLY, FISCO 825-Y-BV-15" REDUCED PRESSURE BACKFLOW PREVENTER WITH BERTAD 910-P-15" FLOW METER MASTER VALVE UNIT IN HOT BOX 2 ENCLOSURE. SEE DIAG. 2101-A.

IRRIGATION MAINLINE SCH. 40 BELL END, SOLVENT WELD PVC, SIZE 2 1/2", 18" DEPTH OF BURY DOWN-STREAM OF PVS.

AUTOMATIC VALVE ASSEMBLY, TORO 1952 SERIES PLASTIC BODY AUTOMATIC VALVE ASSEMBLY WITH FLOW CONTROL AND MANUAL AUTOMATION, SIZE AS SHOWN ON PLAN. SEE DIAG. 2103.

LATERAL PIPING SCH. 40 BELL END, SOLVENT WELD PVC, 18" DEPTH OF BURY.

SOLVENT WELD CAP, SCH. 40 PVC SIZE.

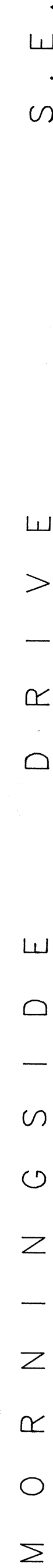
IRRIGATION CONTROLLER MOTOROLA IRRNET 151-IT-2000-5B WITH KEYBOARD V-300 AND ANTENNA FRA-4300 IN STRONG BOX ENCLOSURE. SEE DIAG. D1-11.

BUBBLER ASSEMBLY, TORO 510 SHELUS ADAPTER ASSEMBLY. SEE DIAG. 2110 & 2111.


MODEL	GPM	PSI
55-2-180-PC	10 GPM	40 PSI
55-180-PC	14 GPM	40 PSI

FIXED SPRAY POP-UP SPRINKLER ASSEMBLY, TORO 510-Z-4" POP-UP BODY ASSEMBLY WITH NOZZLES AS FOLLOWS. SEE DIAG. 2105.

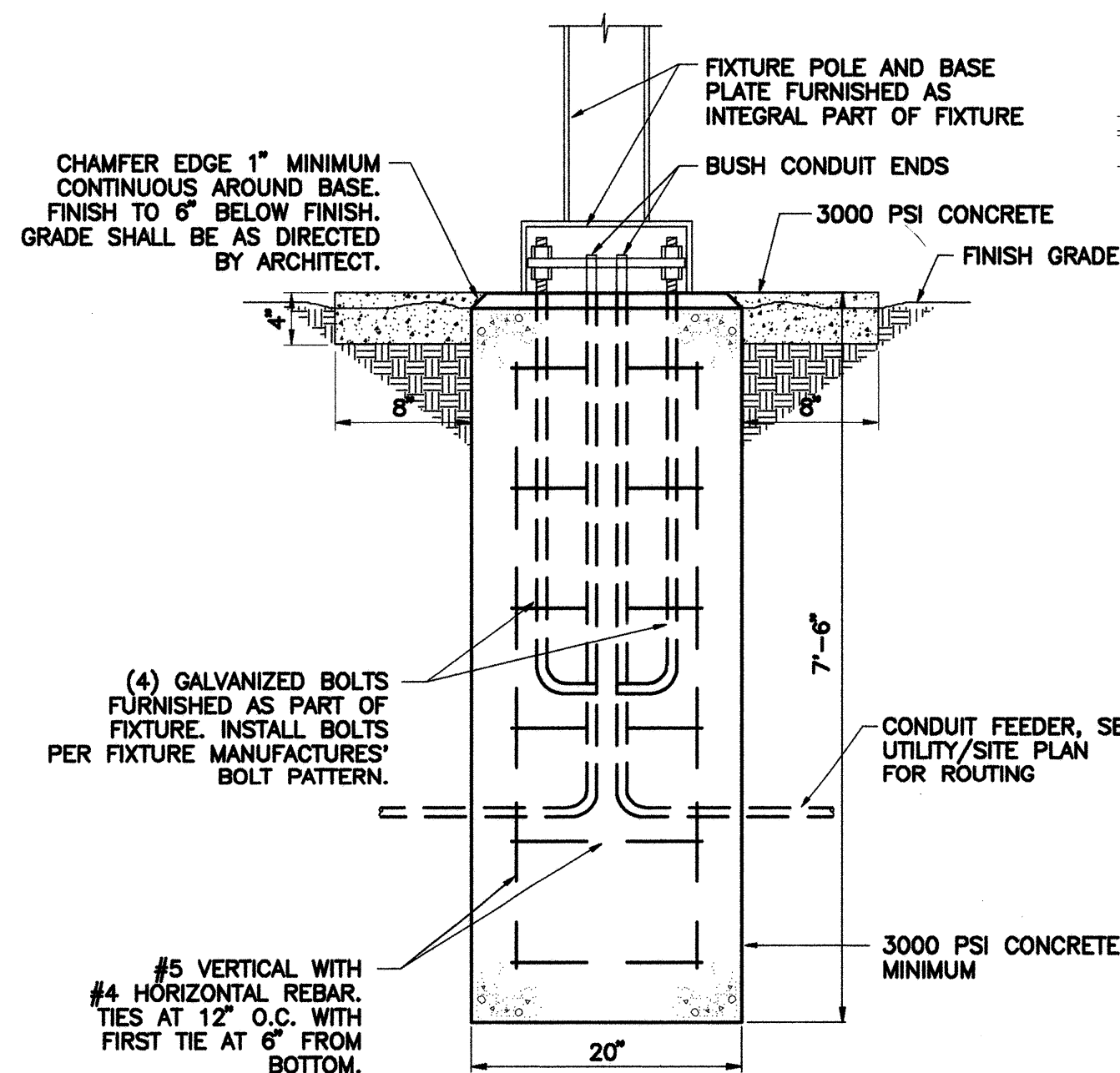
NOZZLE	AREA OF COVERAGE	GPM	PSI
10-PC	1" RADIUS	33	40
10-PC	1 1/2" RADIUS	109	40
10-PC	2" RADIUS	210	40
10-PC	2 1/2" RADIUS	333	40
10-PC	3" RADIUS	485	40
10-PC	3 1/2" RADIUS	660	40
10-PC	4" RADIUS	880	40
10-PC	4 1/2" RADIUS	1100	40
10-PC	5" RADIUS	1320	40
10-PC	5 1/2" RADIUS	1540	40
10-PC	6" RADIUS	1760	40
10-PC	6 1/2" RADIUS	1980	40
10-PC	7" RADIUS	2200	40
10-PC	7 1/2" RADIUS	2420	40
10-PC	8" RADIUS	2640	40
10-PC	8 1/2" RADIUS	2860	40
10-PC	9" RADIUS	3080	40
10-PC	9 1/2" RADIUS	3300	40
10-PC	10" RADIUS	3520	40
10-PC	10 1/2" RADIUS	3740	40
10-PC	11" RADIUS	3960	40
10-PC	11 1/2" RADIUS	4180	40
10-PC	12" RADIUS	4400	40
10-PC	12 1/2" RADIUS	4620	40
10-PC	13" RADIUS	4840	40
10-PC	13 1/2" RADIUS	5060	40
10-PC	14" RADIUS	5280	40
10-PC	14 1/2" RADIUS	5500	40
10-PC	15" RADIUS	5720	40
10-PC	15 1/2" RADIUS	5940	40
10-PC	16" RADIUS	6160	40
10-PC	16 1/2" RADIUS	6380	40
10-PC	17" RADIUS	6600	40
10-PC	17 1/2" RADIUS	6820	40
10-PC	18" RADIUS	7040	40
10-PC	18 1/2" RADIUS	7260	40
10-PC	19" RADIUS	7480	40
10-PC	19 1/2" RADIUS	7700	40
10-PC	20" RADIUS	7920	40
10-PC	20 1/2" RADIUS	8140	40
10-PC	21" RADIUS	8360	40
10-PC	21 1/2" RADIUS	8580	40
10-PC	22" RADIUS	8800	40
10-PC	22 1/2" RADIUS	9020	40
10-PC	23" RADIUS	9240	40
10-PC	23 1/2" RADIUS	9460	40
10-PC	24" RADIUS	9680	40
10-PC	24 1/2" RADIUS	9900	40
10-PC	25" RADIUS	10120	40
10-PC	25 1/2" RADIUS	10340	40
10-PC	26" RADIUS	10560	40
10-PC	26 1/2" RADIUS	10780	40
10-PC	27" RADIUS	11000	40
10-PC	27 1/2" RADIUS	11220	40
10-PC	28" RADIUS	11440	40
10-PC	28 1/2" RADIUS	11660	40
10-PC	29" RADIUS	11880	40
10-PC	29 1/2" RADIUS	12100	40
10-PC	30" RADIUS	12320	40
10-PC	30 1/2" RADIUS	12540	40
10-PC	31" RADIUS	12760	40
10-PC	31 1/2" RADIUS	12980	40
10-PC	32" RADIUS	13200	40
10-PC	32 1/2" RADIUS	13420	40
10-PC	33" RADIUS	13640	40
10-PC	33 1/2" RADIUS	13860	40
10-PC	34" RADIUS	14080	40
10-PC	34 1/2" RADIUS	14300	40
10-PC	35" RADIUS	14520	40
10-PC	35 1/2" RADIUS	14740	40
10-PC	36" RADIUS	14960	40
10-PC	36 1/2" RADIUS	15180	40
10-PC	37" RADIUS	15400	40
10-PC	37 1/2" RADIUS	15620	40
10-PC	38" RADIUS	15840	40
10-PC	38 1/2" RADIUS	16060	40
10-PC	39" RADIUS	16280	40
10-PC	39 1/2" RADIUS	16500	40
10-PC	40" RADIUS	16720	40
10-PC	40 1/2" RADIUS	16940	40
10-PC	41" RADIUS	17160	40
10-PC	41 1/2" RADIUS	17380	40
10-PC	42" RADIUS	17600	40
10-PC	42 1/2" RADIUS	17820	40
10-PC	43" RADIUS	18040	40
10-PC	43 1/2" RADIUS	18260	40
10-PC	44" RADIUS	18480	40
10-PC	44 1/2" RADIUS	18700	40
10-PC	45" RADIUS	18920	40
10-PC	45 1/2" RADIUS	19140	40
10-PC	46" RADIUS	19360	40
10-PC	46 1/2" RADIUS	19580	40
10-PC	47" RADIUS	19800	40
10-PC	47 1/2" RADIUS	20020	40
10-PC	48" RADIUS	20240	40
10-PC	48 1/2" RADIUS	20460	40
10-PC	49" RADIUS	20680	40
10-PC	49 1/2" RADIUS	20900	40
10-PC	50" RADIUS	21120	40
10-PC	50 1/2" RADIUS	21340	40
10-PC	51" RADIUS	21560	40
10-PC	51 1/2" RADIUS	21780	40
10-PC	52" RADIUS	22000	40
10-PC	52 1/2" RADIUS	22220	40
10-PC	53" RADIUS	22440	40
10-PC	53 1/2" RADIUS	22660	40
10-PC	54" RADIUS	22880	40
10-PC	54 1/2" RADIUS	23100	40
10-PC	55" RADIUS	23320	40
10-PC	55 1/2" RADIUS	23540	40
10-PC	56" RADIUS	23760	40
10-PC	56 1/2" RADIUS	23980	40
10-PC	57" RADIUS	24200	40
10-PC	57 1/2" RADIUS	24420	40
10-PC	58" RADIUS	24640	40
10-PC	58 1/2" RADIUS	24860	40
10-PC	59" RADIUS	25080	40
10-PC	59 1/2" RADIUS	25300	40
10-PC	60" RADIUS	25520	40
10-PC	60 1/2" RADIUS	25740	40
10-PC	61" RADIUS	25960	40
10-PC	61 1/2" RADIUS	26180	40
10-PC	62" RADIUS	26400	40
10-PC	62 1/2" RADIUS	26620	40
10-PC	63" RADIUS	26840	40
10-PC	63 1/2" RADIUS	27060	40
10-PC	64" RADIUS	27280	40
10-PC	64 1/2" RADIUS	27500	40
10-PC	65" RADIUS	27720	40
10-PC	65 1/2" RADIUS	27940	40
10-PC	66" RADIUS	28160	40
10-PC	66 1/2" RADIUS	28380	40
10-PC	67" RADIUS	28600	40
10-PC	67 1/2" RADIUS	28820	40
10-PC	68" RADIUS	29040	40
10-PC	68 1/2" RADIUS	29260	40
10-PC	69" RADIUS	29480	40
10-PC	69 1/2" RADIUS	29700	40
10-PC	70" RADIUS	29920	40
10-PC	70 1/2" RADIUS	30140	40
10-PC	71" RADIUS	30360	40
10-PC	71 1/2" RADIUS	30580	40
10-PC	72" RADIUS	30800	40
10-PC	72 1/2" RADIUS	31020	40
10-PC	73" RADIUS	31240	40
10-PC	73 1/2" RADIUS	31460	40
10-PC	74" RADIUS	31680	40
10-PC	74 1/2" RADIUS	31900	40
10-PC	75" RADIUS	32120	40
10-PC	75 1/2" RADIUS	32340	40
10-PC	76" RADIUS	32560	40
10-PC	76 1/2" RADIUS	32780	40
10-PC	77" RADIUS	33000	40
10-PC	77 1/2" RADIUS	33220	40
10-PC	78" RADIUS	33440	40
10-PC	78 1/2" RADIUS	33660	40
10-PC	79" RADIUS	33880	40
10-PC	79 1/2" RADIUS	34100	40
10-PC	80" RADIUS	34320	40
10-PC	80 1/2" RADIUS	34540	40
10-PC	81" RADIUS	34760	40
10-PC	81 1/2" RADIUS	34980	40
10-PC	82" RADIUS	35200	40
10-PC	82 1/2" RADIUS	35420	40
10-PC	83" RADIUS	35640	40
10-PC	83 1/2" RADIUS	35860	40
10-PC	84" RADIUS	36080	40
10-PC	84 1/2" RADIUS	36300	40
10-PC	85" RADIUS	36520	40
10-PC	85 1/2" RADIUS	36740	40
10-PC	86" RADIUS	36960	40
10-PC	86 1/2" RADIUS	37180	40
10-PC	87" RADIUS	37400	40
10-PC	87 1/2" RADIUS	37620	40
10-PC	88" RADIUS	37840	40
10-PC	88 1/2" RADIUS	38060	40
10-PC	89" RADIUS	38280	40
10-PC	89 1/2" RADIUS	38500	40
10-PC	90" RADIUS	38720	40
10-PC	90 1/2" RADIUS	38940	40
10-PC	91" RADIUS	39160	40
10-PC	91 1/2" RADIUS	39380	40
10-PC	92" RADIUS	39600	40
10-PC	92 1/2" RADIUS	39820	40
10-PC	93" RADIUS	40040	40
10-PC	93 1/2" RADIUS	40260	40
10-PC	94" RADIUS	40480	40
10-PC	94 1/2" RADIUS	40700	40
10-PC	95" RADIUS	40920	40
10-PC	95 1/2" RADIUS	41140	40
10-PC	96" RADIUS	41360	40
10-PC	96 1/2" RADIUS	41580	40
10-PC	97" RADIUS	41800	40
10-PC	97 1/2" RADIUS	42020	40
10-PC	98" RADIUS	42240	40
10-PC	98 1/2" RADIUS	42460	40
10-PC	99" RADIUS	42680	40
10-PC	99 1/2" RADIUS	42900	40
10-PC	100" RADIUS	43120	40
10-PC	100 1/2" RADIUS	43340	40
10-PC	101" RADIUS	43560	40
10-PC	101 1/2" RADIUS	43780	40
10-PC	102" RADIUS	44000	40
10-PC	102 1/2" RADIUS	44220	40
10-PC	103" RADIUS	44440	40
10-PC	103 1/2" RADIUS	44660	40
10-PC	104" RADIUS	44880	40
10-PC	104 1/2" RADIUS	45100	40
10-PC	105" RADIUS	45320	40
10-PC	105 1/2" RADIUS	45540	40
10-PC	106" RADIUS	45760	40
10-PC	106 1/2" RADIUS	45980	40
10-PC	107" RADIUS	46200	40
10-PC	107 1/2" RADIUS	46420	40
10-PC	108" RADIUS	46640	40
10-PC	108 1/2" RADIUS	46860	40
10-PC	109" RADIUS	47080	40
10-PC	109 1/2" RADIUS	47300	40
10-PC	110" RADIUS	47520	40
10-PC	110 1/2" RADIUS	47740	40
10-PC	111" RADIUS	47960	40
10-PC	111 1/2" RADIUS	48180	40
10-PC	112" RADIUS	48400	40
10-PC	112 1/2" RADIUS	48620	40
10-PC	113" RADIUS	48840	40
10-PC	113 1/2" RADIUS	49060	40
10-PC	114" RADIUS	49280	40
10-PC	114 1/2" RADIUS	49500	40
10-PC	115" RADIUS	49720	40
10-PC	115 1/2" RADIUS	49940	40
10-PC	116" RADIUS	50160	40
10-PC	116 1/2" RADIUS	50380	40
10-PC	117" RADIUS	50600	40
10-PC	117 1/2" RADIUS	50820	40
10-PC	118" RADIUS	51040	40
10-PC	118 1/2" RADIUS	51260	40
10-PC	119" RADIUS	51480	40
10-PC	119 1/2" RADIUS	51700	40
10-PC	120" RADIUS	51920	40
10-PC	120 1/2" RADIUS	52140	40
10-PC	121" RADIUS	52360	40
10-PC	121 1/2" RADIUS	52580	40
10-PC	122" RADIUS	52800	40
10-PC	122 1/2" RADIUS	53020	40
10-PC	123" RADIUS	53240	40
10-PC	123 1/2" RADIUS	53460	40
10-PC	124" RADIUS	53680	40
10-PC	124 1/2" RADIUS	53900	40
10-PC	125" RADIUS	54120	40
10-PC	125 1/2" RADIUS	54340	40
10-PC	126" RADIUS	54560	40
10-PC	126 1/2" RADIUS	54780	40
10-PC	127" RADIUS	55000	40
10-PC	127 1/2" RADIUS	55220	





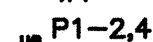
9. TREES SHALL BE PLANTED A MINIMUM OF 11 FEET FROM EXISTING 24" RCP SAS LINE (SEE SHEET 3).

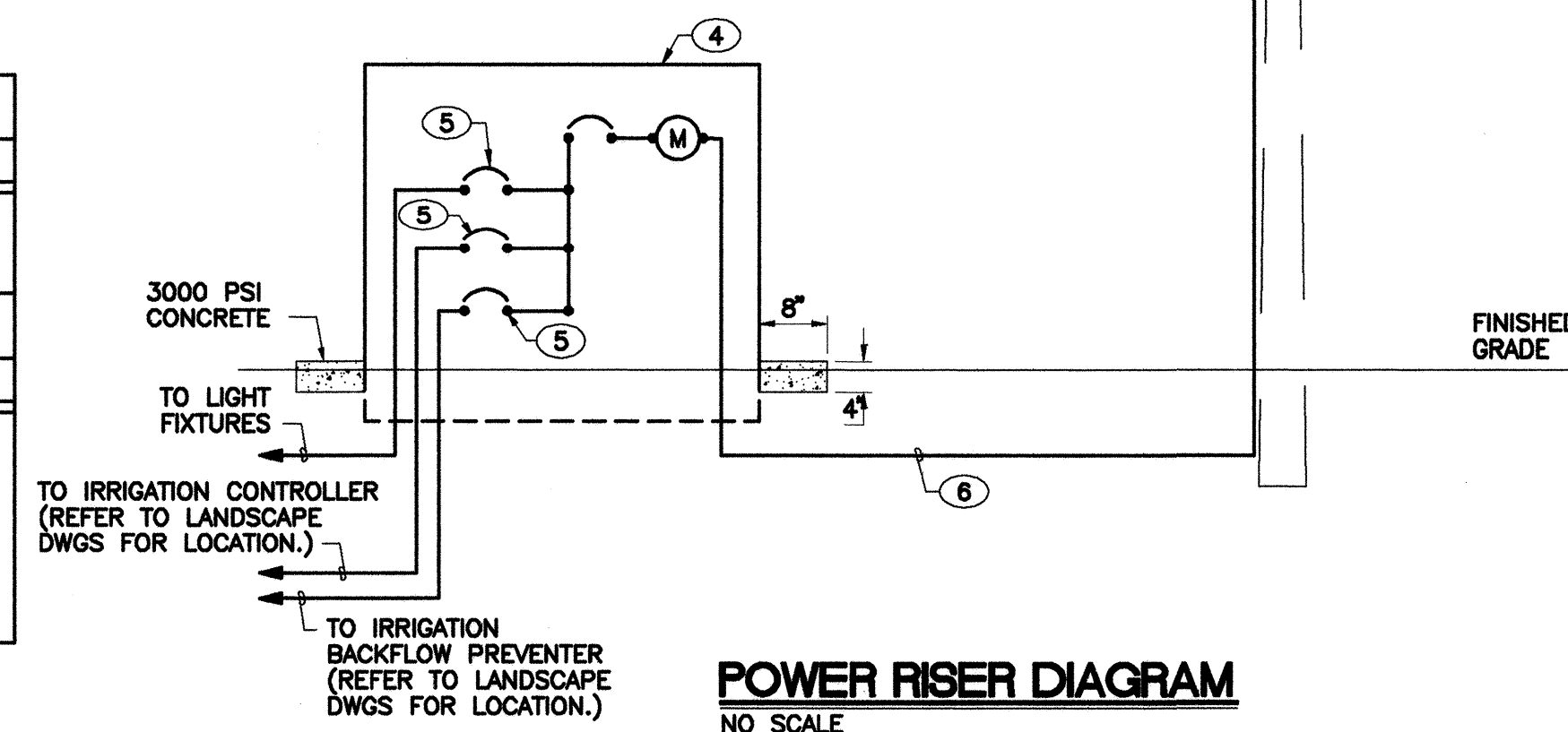
 **MORROW & COMPANY, LTD.**
LANDSCAPE ARCHITECTS
210 La Veta N.E.
Albuquerque, N.M. 87108
PH: 505 268-2266 FAX: 505 265-9637

CITY OF ALBUQUERQUE PARKS AND GENERAL SERVICES DESIGN & DEVELOPMENT					
TITLE: MORNINGSIDES PARK					
PLANTING PLAN					
APPROVALS	ENGINEER	DATE	APPROVALS	ENGINEER	DATE
DRC CHAIRMAN	<i>B. G. Bailey</i>	3-7-95	WATER	<i>Page Shea</i>	3/7/95
TRANSPORTATION	<i>N.A. LHO</i>	3-7-95	WASTE WATER	<i>"</i>	<i>"</i>
HYDROLOGY	<i>C. Mackin</i>	3-7-95			
<i>Trunks</i>	<i>D. Sclina</i>	3-6-95			
PROJECT NO. 4615.90		MAP NO. K-17-Z		SHEET 9 OF 11	



LIGHT FIXTURE SCHEDULE			
TYPE	DESCRIPTION	LAMPS	MOUNTING
A	KIM #1A-EKG501-250HPS120-DB-P-HS-A-25 W/ A 30" SQUARE STEEL TAPPED DARK BRONZE POLE.	1/250W/ HPS	POLE SEE DETAIL

ELECTRICAL LEGEND	
SYMBOL	DESCRIPTION
	POLE MOUNTED FIXTURE, TYPE AS INDICATED ON FIXTURE SCHEDULE.
	BRANCH CIRCUIT CONCEALED IN GROUND WITH CONDUCTORS INDICATED. NEUTRAL, HOT, SWITCH AND GROUND RESPECTIVELY.
	HOME RUN TO PANEL WITH BRANCH CIRCUIT NUMBERS INDICATED.



- ① 2#10 THWN AND 1#10 THWN GROUND IN 3/4" PVC CONDUIT. EXTEND TO CIRCUIT BREAKER. METERING PEDESTAL, REFER TO POWER RISER DIAGRAM FOR ADDITIONAL INFORMATION.
- ② EXISTING PNM POWER POLE, REFER TO POWER RISER DIAGRAM FOR ADDITIONAL INFORMATION.
- ③ NEW METERING PEDESTAL, REFER TO POWER RISER DIAGRAM FOR ADDITIONAL INFORMATION.
- ④ METERING PEDESTAL SHALL BE MIDWEST #M101CPGHP, 120/240V-1 ϕ WITH 100A/2P MAIN BREAKER, THREE SINGLE POLE SPACES, AND METERING SOCKET WITH RING. PROVIDE 8" WIDE CONCRETE EDGE AT PERIMETER OF PEDESTAL.
- ⑤ PROVIDE AND INSTALL A 20A/1P PLUG-IN TYPE CIRCUIT BREAKER IN SPACE.
- ⑥ 2#10 THWN AND 1#10 THWN GROUND IN 3/4" PVC CONDUIT.
- ⑦ PROVIDE RIGID STEEL CONDUIT RISER WITH 2#10 THWN AND 1#10 THWN GROUND UP SOUTHWEST QUADRANT OF EXISTING POLE PER PNM REQUIREMENTS. PROVIDE PITAIL FOR PNM TO MAKE CONNECTION TO.

1. THE ELECTRICAL CONTRACTOR SHALL PROVIDE AND INSTALL ALL ELECTRICAL FACILITIES IN ACCORDANCE WITH THE FOLLOWING SPECIFICATIONS, PLANS AND ASSOCIATED NOTES, NATIONAL ELECTRICAL CODES, AND IN A WORKMANLIKE MANNER.
2. CONTRACTOR SHALL BECOME FAMILIAR WITH EXISTING CONDITIONS AT JOB SITE.
3. THE ELECTRICAL CONTRACTOR SHALL INCLUDE IN HIS BID THE COSTS OF PERMITS, TESTS AND INSPECTIONS, AND VISIT THE SITE OF WORK BEFORE SUBMITTING BID.
4. THE ELECTRICAL CONTRACTOR SHALL COORDINATE HIS WORK WITH THE OTHER TRADES AND REFER TO ARCHITECTURAL PLANS TO DETERMINE THE EXACT LOCATIONS OF FIXTURES.
5. THE ELECTRICAL CONTRACTOR SHALL GUARANTEE ALL WORK AND MATERIAL FOR A PERIOD OF ONE YEAR AFTER DATE OF ACCEPTANCE.
6. A SET OF MARKED UP PRINTS SHALL BE PREPARED SHOWING ALL CHANGES MADE DURING CONSTRUCTION AND TURN IT OVER TO THE OWNER AT THE END OF THE JOB. ALL CHANGES MUST HAVE THE OWNERS APPROVAL.
7. ANY DISCREPANCY BETWEEN MATERIAL DESCRIPTION AND CATALOG NUMBER SHALL BE REPORTED TO THE ARCHITECTS, ENGINEERS, OR OWNERS ATTENTION IMMEDIATELY.
8. CONTRACTOR SHALL SUBMIT SHOP DRAWINGS OR CATALOG CUTS ON ALL LIGHTING FIXTURES WHICH MAY BE SUBSTITUTED FROM THAT SPECIFIED.
9. INTERRUPTION OF AN ELECTRICAL SERVICES SHALL BE COORDINATED WITH THE OWNER AT LEAST 7 DAYS PRIOR TO THE INTENDED OUTAGE AND SHALL BE REQUESTED IN WRITING WITH A COPY TO THE ARCHITECT AND OWNER.
10. ALL CONDUCTORS TO BE #10 AWG THWN EXCEPT WHERE OTHERWISE SHOWN OR NOTED. IT IS PERMISSIBLE FOR THE CONTRACTOR TO USE THHN WIRING IN EXISTING CONDUITS.
11. PROVIDE SEPARATE COLOR CODING FOR 120/208V-3ø-4W, 240 VOLT-1ø, 240 VOLT-3ø AND 277/480 VOLT-3ø-4W CIRCUITS. MAINTAIN SAME COLOR CODING THROUGHOUT.
12. BALLASTS SHALL BE PREMIUM CLASS "P". FIXTURE CONSTRUCTION SHALL BE 20 GA. UNLESS SPECIFIED OTHERWISE.
13. ALL CONDUIT WHICH COMES IN CONTACT WITH EARTH SHALL BE P.V.C. ALL FEEDERS AND HOMERUNS SHALL BE 3/4" MINIMUM.
14. ALL PULLBOXES SHALL BE CODE GA. AND MEET THE MINIMUM SIZES AS RECOMMENDED BY N.E.C.

[illegible]

PRS
Group 5639 Jefferson, N.E.
Albuquerque, N.M. 87109
(505) 344-7445

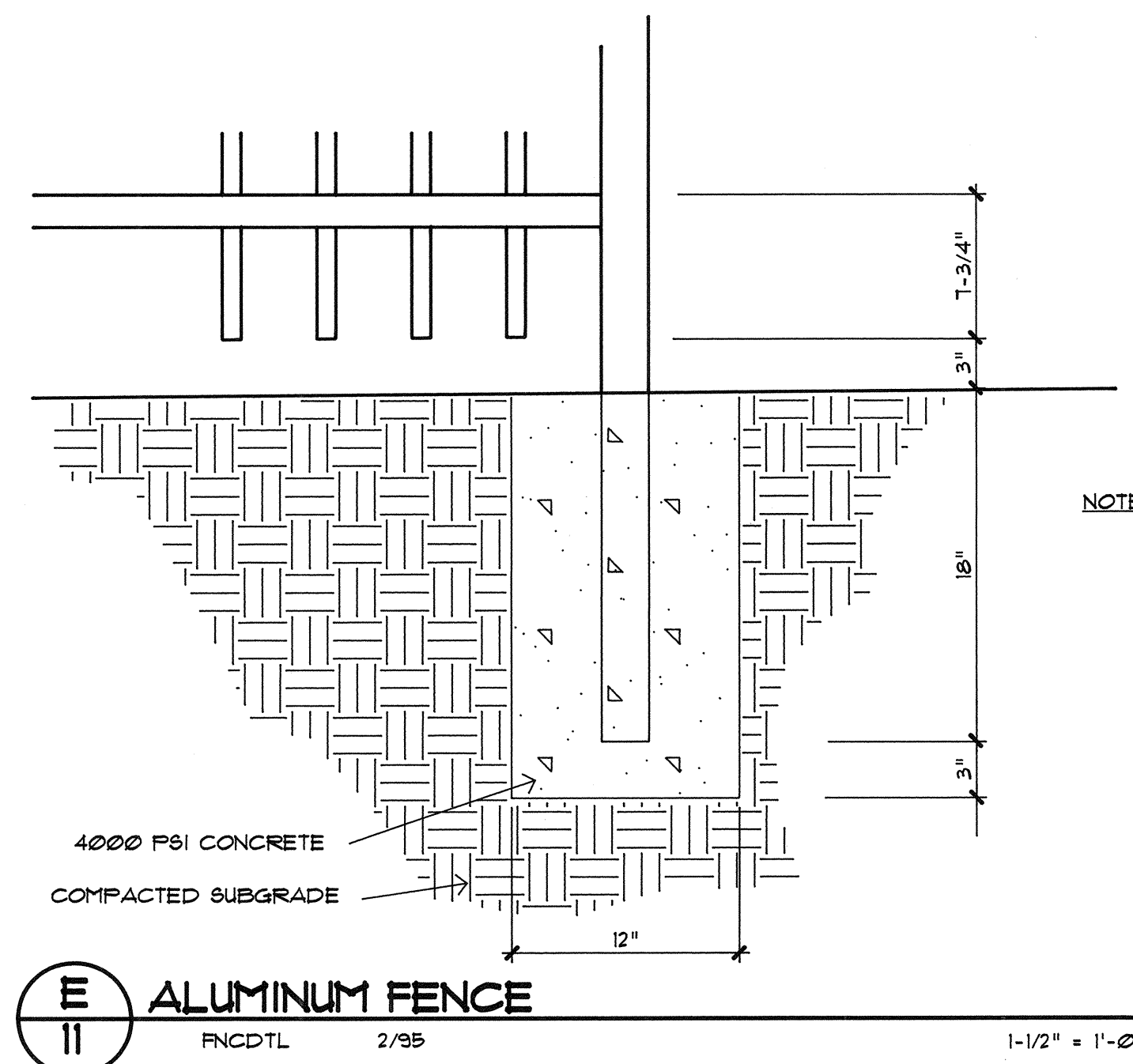
A Responsive Engineering Corporation

CITY OF ALBUQUERQUE
PARKS/GENERAL SERVICES
DEPARTMENT

TITLE: **MORNINGSIDE PARK
LIGHTING PLAN**

APPROVALS	ENGINEER	DATE	APPROVALS	ENGINEER	DATE
DRC CHAIRMAN	<i>[Signature]</i>	3-7-95	WATER	<i>N/A RDR</i>	
TRANSPORT.	<i>N/A RDR</i>	3-07-95	WASTE WATER	"	
HYDROLOGY	<i>C. Smith</i>	3-7-95			
<i>TRM/KS</i>	<i>D. Smith</i>	3.6.95			
PROJECT NO.	461590	MAP NO.	K-17-Z	SHEET	OF
				10	11

SCALE: 1"=20'



1. ALL VALVE BOXES FOR MANUAL DRAINS AND AUTOMATIC VALVES SHALL BE INSTALLED AT A MINIMUM OF 12" FROM EDGES OF DRIVE.
2. ALL VALVE BOXES SHALL BE SUPPORTED BY CINDER BLOCKS, (MINIMUM 2 PER VALVE BOX). INSTALL BLOCKS IN A MANNER WHICH WILL PREVENT CONTACT WITH PIPING, WIRES, VALVES, ETC.
3. MARK ALL 24-VOLT WIRE ENDS WITH 3M 9TD-09 BROWN MARKER TAPE AT THE VALVE BOX AND CONTROLLER LOCATIONS.
4. ALL 24-VOLT WIRE SHALL BE MARKED WITH A 4" WIDE YELLOW MARKER TAPE AND MARKED "WARNING-ELECTRICAL". LAY MARKER TAPE HORIZONTALLY 6" ABOVE WIRE.
5. 24-VOLT WIRE SHALL BE IN COMMON TRENCH WITH MAIN LINE AND SHALL HAVE SEPARATE SLEEVE WHERE CROSSING ALL HARD CONSTRUCTION. ALL SLEEVE PIPING FOR 24-VOLT WIRE SHALL BE 1-1/4" CLASS 90 PVC.
6. WHERE PROPOSED PIPING CROSSES EXISTING ASPHALT AND/OR CONCRETE, THE CONTRACTOR SHALL SAW-CUT, REMOVE AND PROPERLY DISPOSE OF WASTE, EXCAVATE, INSTALL SLEEVE PIPING, MAINS AND LATERALS, BACKFILL, AND COMPACT TO 95%. CONTRACTOR SHALL REPLACE ASPHALT AND/OR CONCRETE TO MATCH EXISTING.
7. THE CONTRACTOR SHALL ADJUST ALL VALVES, BUBBLERS, AND SPRINKLERS FOR OPTIMUM COVERAGE, AND SHALL PROVIDE AND INSTALL NOZZLES OTHER THAN THOSE SPECIFIED AS INSTRUCTED BY THE LANDSCAPE ARCHITECT AT NO ADDITIONAL COST TO THE OWNER.
8. CONTRACTOR SHALL INSTALL ALL BUBBLERS ON HIGH SIDE OF TREE WELLS.
9. CONTRACTOR SHALL TAPE CLOSED ALL SLEEVE PIPE OPENINGS USING DUCT TAPE TO PREVENT DEBRIS FROM ENTERING SLEEVES.
10. CONTRACTOR SHALL EXTEND 100-VOLT A.C. FROM EXISTING POWER TO IRRIGATION CONTROLLER TO THE ELECTRICAL PANEL. ASSOCIATED BREAKER SHALL BE LABELED "IRRIGATION CONTROL PANEL". ALL ELECTRICAL WORK SHALL BE LOCAL CODES AND N.E.C. STANDARD. (SEE LIGHTING PLAN)
11. ALL EXISTING DISTRIBUTION LINE LOCATIONS ARE SCHEMATIC. IT SHALL BE THE CONTRACTOR'S RESPONSIBILITY TO POT HOLE AND FIELD CHECK TO DETERMINE ACTUAL LOCATIONS AS AN INCIDENTAL REQUIREMENT TO THE CONSTRUCTION CONTRACT.
12. THE PROPOSED CONTROLLER LOCATION INDICATED ON THE PLANS IS APPROXIMATE. ACTUAL LOCATION OF THE CONTROLLER SHALL BE DETERMINED BY OWNER'S REPRESENTATIVE IN THE FIELD.
13. LOCATIONS OF ALL SLEEVE PIPING SHALL BE VERIFIED BY THE CONTRACTOR. EXCAVATION, POT-HOLING, ASSOCIATED WORK, MATERIALS, LABOR ETC. SHALL BE THE RESPONSIBILITY OF CONTRACTOR. NO ADDITIONAL PAYMENT WILL BE MADE TO THE CONTRACTOR FOR LOCATING SLEEVES.
14. THIS SYSTEM WAS DESIGNED FOR 65 PSI STATIC WATER PRESSURE AND 40 GPM. SHOULD THE PRESSURE AND CAPACITY BE LESS THAN THIS, NOTIFY THE LANDSCAPE ARCHITECT BEFORE PROCEEDING WITH THE INSTALLATION SO THAT ADJUSTMENTS CAN BE MADE IN THE PIPE SIZE. IF THE PRESSURE IS MUCH GREATER, NOTIFY THE LANDSCAPE ARCHITECT, AS A PRESSURE REDUCER MAY BE REQUIRED.

1. **SURFACE PREPARATION**

CONCRETE: CONCRETE SHALL BE CURED A MINIMUM OF 1 DAYS BEFORE TUFFTUF INSTALLATION. CONCRETE SHALL BE TROUELED SMOOTH, CLEAN, DRY AND FREE OF DIRT AND DUST PRIOR TO INSTALLATION. CONCRETE SHALL BE CLEANED WITH A PRESSURE WASH OR BY ACID ETCHING THE SURFACE.
2. **AREA LAYOUT**

BEGIN THE LAYOUT BY SNAPPING TWO CHALK LINES ON THE SURFACE 90 DEGREES TO EACH OTHER, STARTING AT THE MOST CRITICAL AND LONGEST EDGE OR IN THE CENTER OF THE FLAT AREA.
3. **CUTTING THE TILES**

MAKING CUTOUPS ON TILES WITH FELT-TIP MARKERS AND SIMPLE TEMPLATES (SUPPLIED BY CONTRACTOR). CUT AROUND POSTS AND SUPPORT PIPE WITH A HOLE SAW OR SABER SAW WITH A 3-1/2" COARSE TOOTHED BLADE. PRIOR TO CUTTING, FOUR LIQUID DISH SOAP ON MARKED LINES FOR SAW BLADE LUBRICATION. WHEN THE CUTOUP IS IN THE CENTER OF THE TILE, AN ACCESS CUT CONNECTING THE HOLE TO THE NEAREST EDGE IS REQUIRED. REMOVAL OF SOME OF THE WAFFLE FEET MAY BE NECESSARY TO MAKE THE TILE LAY FLAT OVER THE MOUNTING PLATES.
4. **GLUING THE TILES**

SURFACE TEMPERATURE SHALL BE ABOVE 40 DEGREES F TO ASSURE SOLID, POSITIVE ADHESION. TILES SHALL BE DRY PRIOR TO GLUING. IT IS BEST TO INSTALL TILES IN THE MORNING OR WHEN TEMPERATURE IS COOL DUE TO EXPANSION AND CONTRACTION OF TILES.

TILES SHALL BE INSTALLED IN ROWS, WORKING FROM THE CENTER OF THE FLAT AREA AND OUT IN BOTH DIRECTIONS, OR AT THE CRITICAL EDGE. WITH A CAULKING GUN, CAULK FL 2000 ADHESIVE SEALANT OR EQUAL AROUND THE OUTER EDGE AND CROSSWAYS IN THE CENTER OF THE TILE AT A COVERAGE RATE OF ABOUT ONE TUBE OF ADHESIVE PER (3) TILES. MORE ADHESIVE IS REQUIRED IF THE SURFACE IS ROUGH AND POROUS. BE CAREFUL NOT TO GET ANY ON THE TOP SURFACE OF THE TILES. CURE OF THE ADHESIVE IS FOR 24 HOURS. USING THE CAULK LINES AS GUIDES, CAREFULLY LAY TILES DOWN TIGHTLY AGAINST EACH OTHER, KEEPS THE JOINTS IN LINE IN BOTH DIRECTIONS. SOME SLIGHT VARIATIONS IN THE SIZES MAY OCCUR, THUS THE CONTRACTOR SHALL MEASURE EACH TILE PRIOR TO GLUING SO THAT ADJACENT TILES CONFORM IN SIZE. NOTE: ADJUSTING THE TILES IS VERY DIFFICULT AFTER ADHESIVE HAS DEVELOPED A "TACK". TILES SHALL BE PRESSED DOWN WITH A WEIGHTED ROLLER. CAULK AROUND POSTS WITH CLEAN SILICONE.
5. **CLEAN UP**

NON-CURED ADHESIVE SHALL BE REMOVED FROM TILES WITH MINERAL SPIRITS.

[illegible]

CITY OF ALBUQUERQUE PARKS AND GENERAL SERVICES DESIGN & DEVELOPMENT					
TITLE: MORNINGSIDES PARK					
CONSTRUCTION DETAILS					
APPROVALS	ENGINEER	DATE	APPROVALS	ENGINEER	DATE
DRC CHAIRMAN	B.G. <i>Bohley</i>	3-7-95	WATER	N/A <i>DAW</i>	
TRANSPORTATION	<i>Redmond</i>	3-7-95	WASTE WATER	"	
HYDROLOGY	C. <i>Heath</i>	3-7-95			
<i>Parks</i>	D. <i>Salma</i>	3-6-95			
PROJECT NO. 4815.90	MAP NO. K-17-Z		SHEET 11 OF 11		