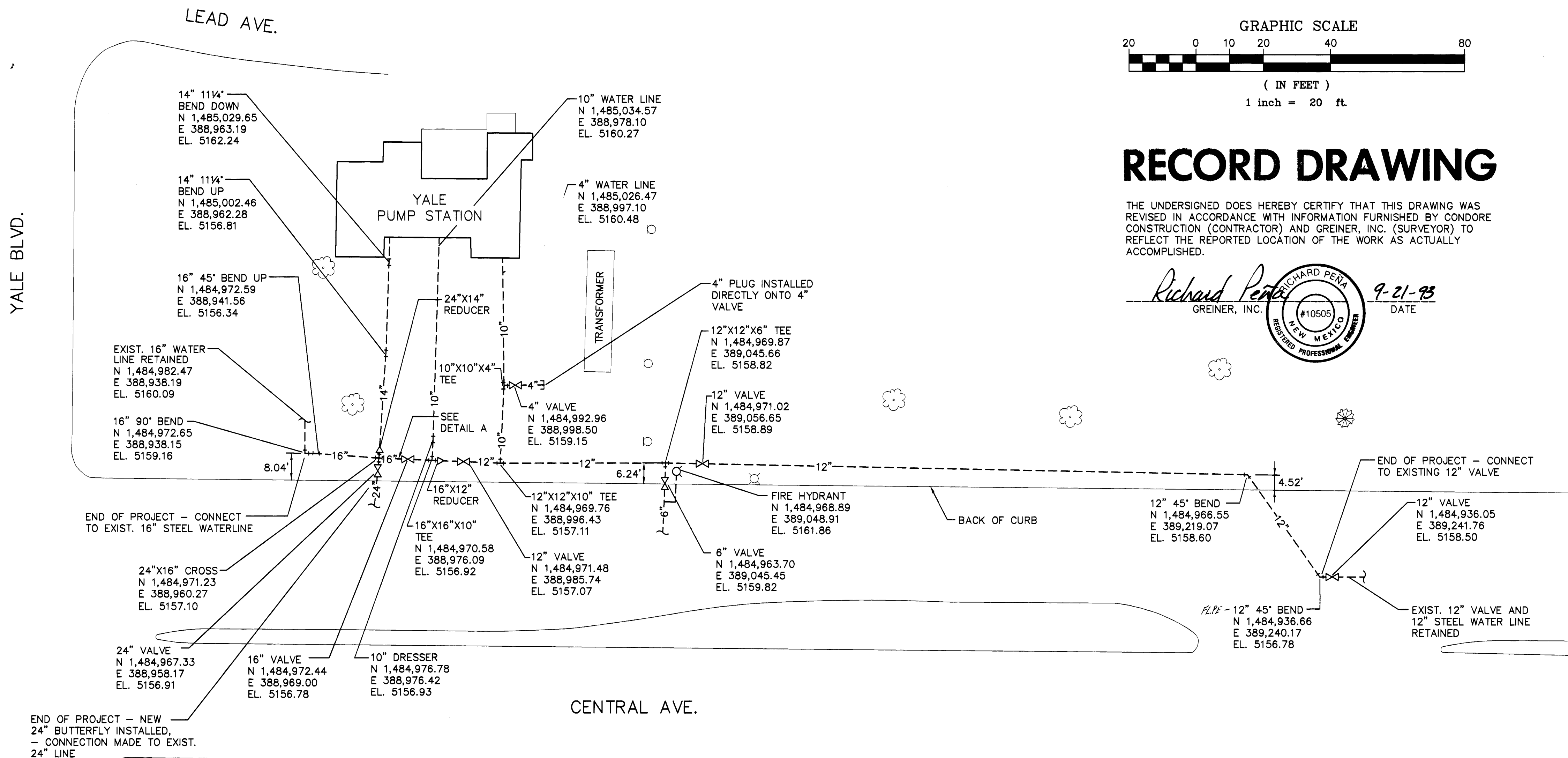
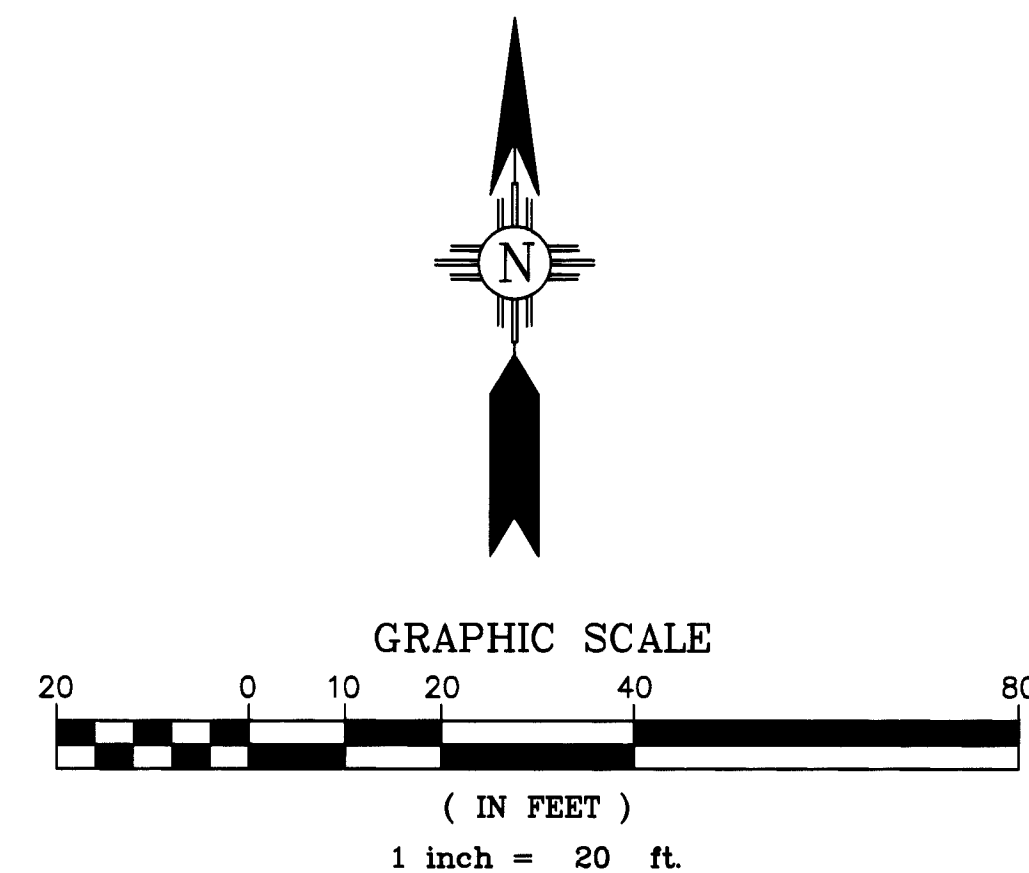


YALE BLVD.

LEAD AVE.




END OF PROJECT - NEW
24\"/>



RECORD DRAWING

THE UNDERSIGNED DOES HEREBY CERTIFY THAT THIS DRAWING WAS
REVISED IN ACCORDANCE WITH INFORMATION FURNISHED BY CONDORE
CONSTRUCTION (CONTRACTOR) AND GREINER, INC. (SURVEYOR) TO
REFLECT THE REPORTED LOCATION OF THE WORK AS ACTUALLY
ACCOMPLISHED.

Richard Peña
GREINER, INC.  9-21-93
DATE

26 4652.900193

SCANNED BY
BY LASON

NOTES:

1. THE STATE PLANE COORDINATES SHOWN
AT ALL BENDS AND FITTINGS ARE
INITIATED FROM ACS STATIONS "16-K-16"
AND "6-K-15". BEARINGS SHOWN ARE
GRID BEARINGS, DISTANCES ARE GROUND
DISTANCES. (USE ACS STATION
ELEVATIONS FOR BENCHMARKS).
2. ALL EXISTING STEEL WATER LINES
BETWEEN THE PUMP STATION AND
CENTRAL AVENUE WERE REMOVED
AND DISPOSED OF IN THIS PROJECT.
3. THIS RECORD DRAWING WAS COMPLETED
UNDER A/E CONTRACT NO. 4335.

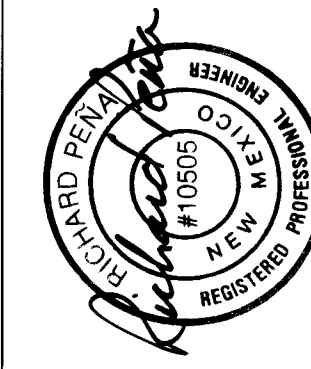
BENCH MARKS

CONTRACTOR	CONDORE	CONSIDER	DATE
WORK	STAKED BY	N/A	4/26/93
FIELD	ACCEPTANCE BY	A. OSTAPACK	DATE 5/93
DRAWINGS	FIELD	ACCEPTANCE BY	P. CHANG
CORRECTED BY	DATE	5/93	DATE 7/93
RECORDED BY	DATE	5/93	DATE 5/93
DATE	5/10/93		

SURVEY INFORMATION

NO.	BY	DATE
1909	W. MARQUIS	4/26/93
1909	K. YOUNG	4/27/93
1909	K. YOUNG	4/29/93
1909	W. MARQUIS	5/3/93
1909	K. YOUNG	5/4/93
1909	D. O'DANIEL	5/10/93

ENGINEER'S SEAL



APPROVAL OF AS BUILT DRAWINGS
CHIEF CONSTRUCTION ENGINEER
Richard B. Peña
DATE 10-29-93

Greiner, Inc.

CITY OF ALBUQUERQUE
PUBLIC WORKS DEPARTMENT
ENGINEERING DIVISION

TITLE: YALE PUMP STATION
WATER LINE REPLACEMENT

APPROVALS	ENGINEER	DATE	APPROVALS	ENGINEER	DATE
DRC Chairman			Water		
Transportation			Waste Water		
Hydrology					

DRAWING NO. 4652.90 MAP NO. K-16N SHEET 1 OF 1