

CONSTRUCTION PLANS FOR
CIMINO ROAD SANITARY SEWER PROJECT
CITY PROJECT NO. 468361

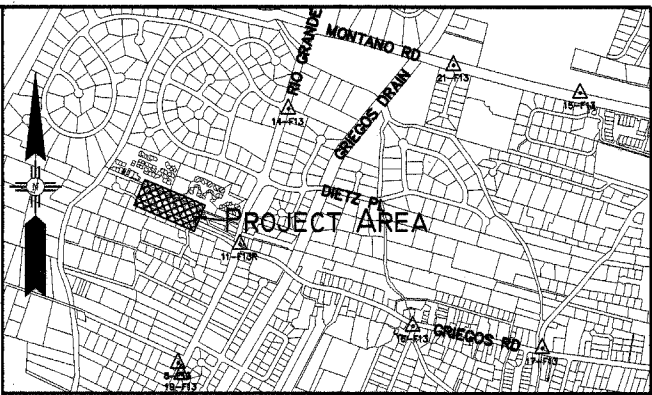
ALBUQUERQUE-BERNALILLO COUNTY WATER UTILITY AUTHORITY
APRIL 2008

INDEX OF SHEETS

SHEET NO.	SHEET TITLE
1	TITLE, LOCATION MAP, GENERAL NOTES AND INDEX OF DRAWINGS
2	SEWER LINE PLAN AND PROFILE

UTILITY CONTACT LIST

Name Musinski, Nancy	Phones Office phone: (505) 768-2729 Office fax: 768-3629 nmusinski@cabq.gov	Business City of Albuquerque, Water Utility Senior Engineer, Utility Engineering P.O. Box 1293 Albuquerque, NM 87103	Name Harrison, Royal	Phones Office phone: (505) 938-7339 Office fax: 938-7380 Royal.Harrison@twtelecom.com	Business Time Warner Telecom Plant Manager 3830 Singer Blvd. NE Suite 1000 Albuquerque, NM 87109
Name Blauwkamp, Roland	Phones (Rol) Office phone: 241-3606 Cell Phone: 401-7516 Office fax: (505) 241-0559 rblauwk@pnm.com	Business PNM Electric Co. Mail Stop ES81 4201 Edith Blvd. NW Albuquerque, NM 87107	Name Jaramila, Rita	Phones Office phone: (505) 245-8352 Office fax: (505) 245-8733 Mobile: (505) 385-4472 Pager: (505) 380-3301 rjaramila@qwest.com	Business Qwest Manager- Engineering NM Engineering/Planning 400 Tijeras NW, Room 710 Albuquerque, NM 87102
Name Bates, Steve	Phones Office phone: (505) 898-2681ext.48 Office fax: 898-6379 sbates@ecoresources.com	Business New Mexico Utilities 4700 Irving Blvd. NW Suite 201 Albuquerque, NM 87114	Name Kelly, Larry	Phones Office Phone: (505) 246-0501 Office Fax: (505) 246-0479 Cell: 505-270-3442 Larry.Kelly@qwest.com	Business Qwest Long Distance Sr. Operations Tech 400 Tijeras Ave NW Suite 570 Albuquerque, NM 87102
Name Bouska, Kelly	Phones Office phone: (505) 241-7752 Office fax: (505) 241-7753 kbouska@pnm.com	Business PNM Gas Co. Mail Stop GS66 4625 Edith Blvd. NE Albuquerque, NM 87107	Name Mortus, Mike	Phones Office Phone: (505) 761-6235 Office Fax: (505) 761-0599 Mobile: (505) 289-4006 Mike_Mortus@cable.comcast.com	Business Comcast Project Manager 4611 Montbel Place NE Albuquerque, NM
Name Brown, John	Phones Office phone: (505) 314-0890 Office fax: (505) 314-0891 john@bcgassets.com	Business BCG Assets 505 Marquette Ave NW Suite LL-110A Albuquerque, NM 87102	Name Mueller, Rick	Phones Office phone: (505) 244-3161 Office fax: 244-0094 Mobile: 228-3329 rdmueller@mcleadusa.com Bank	Business McLead USA Supervisor of Outside Techs. 505 Marquette NW (Compass) Suite 1600 Albuquerque, NM 87102
Name Crowel, David	Phones Office phone: (505) 842-2911 Office fax: 842-2890 dcrowel@att.com	Business AT&T Resource Supervisor 111 3rd Street NW Albuquerque, NM 87103			
Name Darnell, Andy	Phones Office phone: (505) 346-4470 Office fax: 348-8666 Andy.Darnell@mc.com	Business MCI Worldcom Operations Manager 6001 Midway Park NE Albuquerque, NM 87109			



LOCATION MAP
CITY ZONE MAP NO. F13

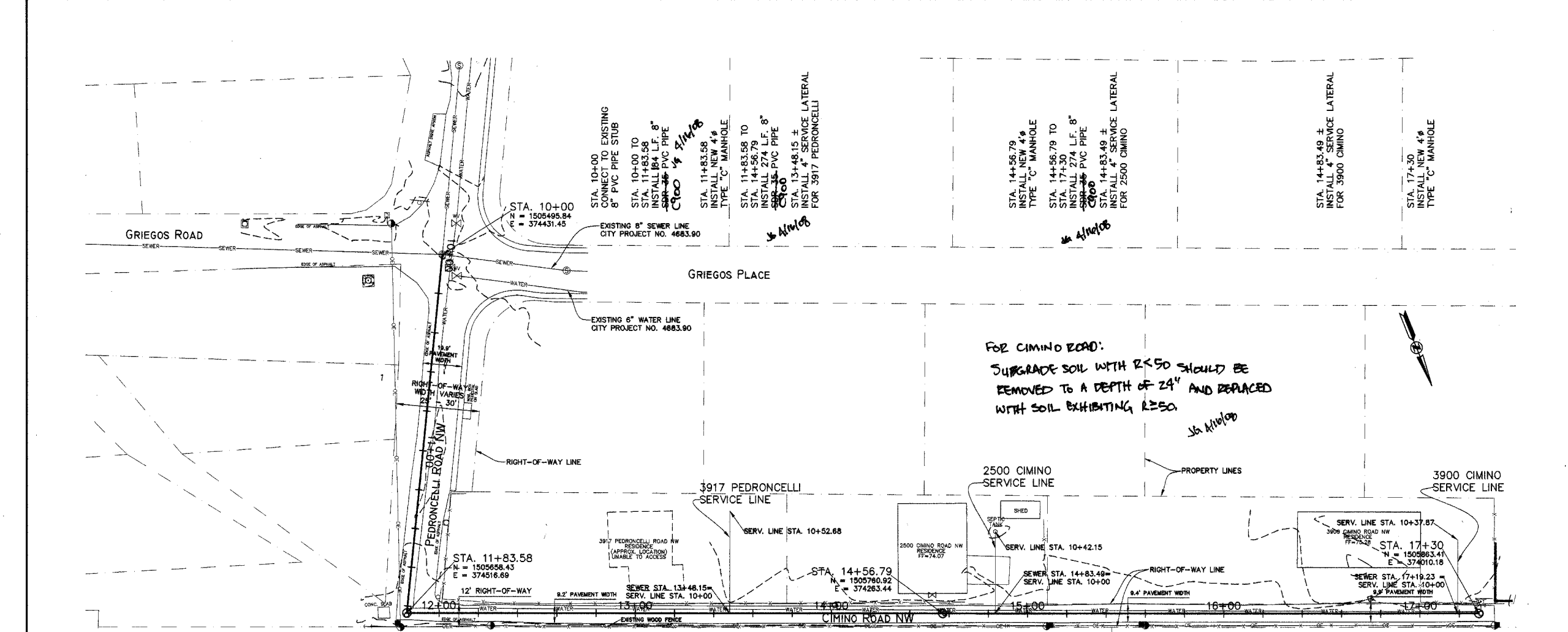
SCALE: 1"=1000'

- ALL WORK DETAILED ON THESE PLANS TO BE PERFORMED UNDER THIS CONTRACT SHALL, EXCEPT AS OTHERWISE STATED OR PROVIDED FOR HEREON, BE CONSTRUCTED IN ACCORDANCE WITH THE CITY OF ALBUQUERQUE STANDARD SPECIFICATIONS FOR PUBLIC WORKS CONSTRUCTION, 1986 EDITION, UPDATE NO. 7, INCLUDING AMENDMENT NO. 1, (REFERRED TO HEREINAFTER AS THE STANDARD SPECIFICATIONS).
- TWO (2) WORKING DAYS PRIOR TO ANY EXCAVATION, CONTRACTOR MUST CONTACT N.M. ONE-CALL SYSTEM, 280-1990, FOR LOCATION OF EXISTING UTILITIES.
- THE CONTRACTOR SHALL EXERCISE CARE TO AVOID DISTURBING EXISTING UNDERGROUND UTILITIES. IT SHALL BE HIS RESPONSIBILITY TO COORDINATE WITH THE UTILITY COMPANIES IN ORDER TO PREVENT ANY SERVICE DISRUPTION.
- PRIOR TO CONSTRUCTION, THE CONTRACTOR SHALL EXCAVATE AND VERIFY THE HORIZONTAL AND VERTICAL LOCATIONS OF ALL OBSTRUCTIONS. SHOULD A CONFLICT EXIST, THE CONTRACTOR SHALL NOTIFY THE ENGINEER SO THAT THE CONFLICT CAN BE RESOLVED WITH MINIMUM AMOUNT OF DELAY.
- RELOCATION OF EXISTING UTILITIES AND THE INSTALLATION OF NEW UTILITY LINES WILL BE COMPLETED IN ADVANCE OF STARTING THE PAVEMENT WORK. TEMPORARY PAVEMENT WILL BE PLACED IN ALL TRENCHES REQUIRED FOR THE UTILITY REPLACEMENTS IN THOSE AREAS THAT MUST MAINTAIN TRAFFIC UNTIL THE PAVEMENT WORK STARTS IN EACH AREA. PAVEMENT REPLACEMENT MUST BEGIN WITHIN SEVEN (7) DAYS OF TRENCH CLOSURE. TEMPORARY STRIPING SHALL BE THE CONTRACTOR'S RESPONSIBILITY. TEMPORARY PAVEMENT AND STRIPING SHALL BE INCIDENTAL TO THE CONSTRUCTION TRAFFIC CONTROL ITEM.
- ALL EXCAVATED MATERIAL THAT IS NOT REQUIRED TO BE REUSED MUST BE REMOVED FROM THE PROJECT AREA WITHIN FOUR DAYS OF EXCAVATION. SPOIL PILES WILL BE ALLOWED ONLY AS DIRECTED BY THE ENGINEER. THE CONTRACTOR SHALL NOT CHANGE EXISTING DRAINAGE PATTERNS WITH THE NEW CONSTRUCTION. THE CONTRACTOR SHALL COORDINATE HIS CONSTRUCTION ACTIVITIES WITH ALL OTHER CONTRACTORS AND UTILITY COMPANIES WORKING IN THE SAME AREA. THE CONTRACTOR MAY BE REQUIRED TO RESCHEDULE THEIR ACTIVITIES TO ALLOW UTILITY CREWS TO PERFORM THEIR REQUIRED WORK. NO ADDITIONAL COMPENSATION WILL BE ALLOWED FOR DELAYS OR INCONVENIENCE CAUSED BY UTILITY COMPANY WORK CREWS.
- WHEN ADJUTING NEW PAVEMENT TO EXISTING, CONTRACTOR SHALL SAW (MILL) CUT EXISTING PAVEMENT TO A NEAT, STRAIGHT LINE, AS REQUIRED, TO REMOVE ANY BROKEN OR CRACKED PAVEMENT AND MATCH NEW TO EXISTING.
- CONTRACTOR IS RESPONSIBLE FOR REMOVAL AND DISPOSAL OF ALL DEMOLITION DEBRIS. SALVAGE OF ANY MATERIAL SHALL BE IDENTIFIED BY THE CITY/COUNTY ENGINEER. WORK MATERIALS SHALL BE DISPOSED OF IN CITY APPROVED WASTE AREAS SECURED BY AND AT THE EXPENSE OF THE CONTRACTOR.
- ALL UTILITY LINES WHICH ARE NOT SPECIFICALLY DESIGNATED TO BE REMOVED AND REPLACED ON THE PLANS SHALL BE MAINTAINED IN SERVICE. SHORING, SHEETING, AND OTHER MEANS OF SUPPORT SHALL BE EMPLOYED BY THE CONTRACTOR TO PREVENT DAMAGE OR LOSS OF THESE EXISTING UTILITIES. BEAM AND CABLE OR OTHER ADEQUATE SUPPORTS SHALL BE USED FOR TEMPORARY SUPPORT OF ALL UTILITY LINES WHICH CROSS THE TRENCH. ANY DAMAGE TO EXISTING UTILITIES SHALL PROMPTLY BE REPAIRED AT THE CONTRACTOR'S EXPENSE. THE ENGINEER WILL BE IMMEDIATELY NOTIFIED OF ANY SIGNIFICANT DEVIATION OF EXPOSED UTILITIES FROM THE LOCATIONS SHOWN ON THE PLANS SO THAT CONFLICTS CAN BE RESOLVED IN A TIMELY MANNER.
- THE CONTRACTOR SHALL ASSUME RESPONSIBILITY FOR ANY DAMAGE TO EXISTING PAVING OR CURB AND GUTTER DURING CONSTRUCTION, APART FROM THOSE SECTIONS INDICATED FOR REMOVAL ON THE PLANS, AND SHALL REPAIR OR REPLACE SAME AT HIS OWN EXPENSE.
- ALL ABANDONED UTILITY LINES WHICH ARE EXPOSED AS A RESULT OF CONSTRUCTION SHALL BE REMOVED AND DISPOSED OF BY THE CONTRACTOR.
- EXCAVATION AND SHORING ACTIVITIES MUST BE CARRIED OUT IN ACCORDANCE WITH OSHA 29CFR 1926.650 SUBPART P.
- CONTRACTOR SHALL PROVIDE AND MAINTAIN ALL CONSTRUCTION SIGNAGE UNTIL THE PROJECT HAS BEEN ACCEPTED BY THE ALBUQUERQUE-BERNALILLO COUNTY WATER UTILITY AUTHORITY.
- THE CONTRACTOR AGREES THAT HE SHALL ASSUME THE SOLE AND COMPLETE RESPONSIBILITY FOR THE JOB SITE CONDITIONS DURING THE COURSE OF CONSTRUCTION OF THIS PROJECT, INCLUDING SAFETY OF ALL PERSONS AND PROPERTY; THAT THIS REQUIREMENT SHALL APPLY CONTINUOUSLY AND NOT BE LIMITED TO NORMAL WORKING HOURS; AND THAT THE CONTRACTOR SHALL DEFEND, INDEMNIFY, AND HOLD HARMLESS THE OWNER & ENGINEER FROM ANY AND ALL LIABILITY REAL OR ALLEGED, IN CONNECTION WITH THE PERFORMANCE OF WORK ON THIS PROJECT, EXCEPTING LIABILITY ARISING FROM THE SOLE NEGLIGENCE OF THE OWNER OR ENGINEER.

GENERAL NOTES

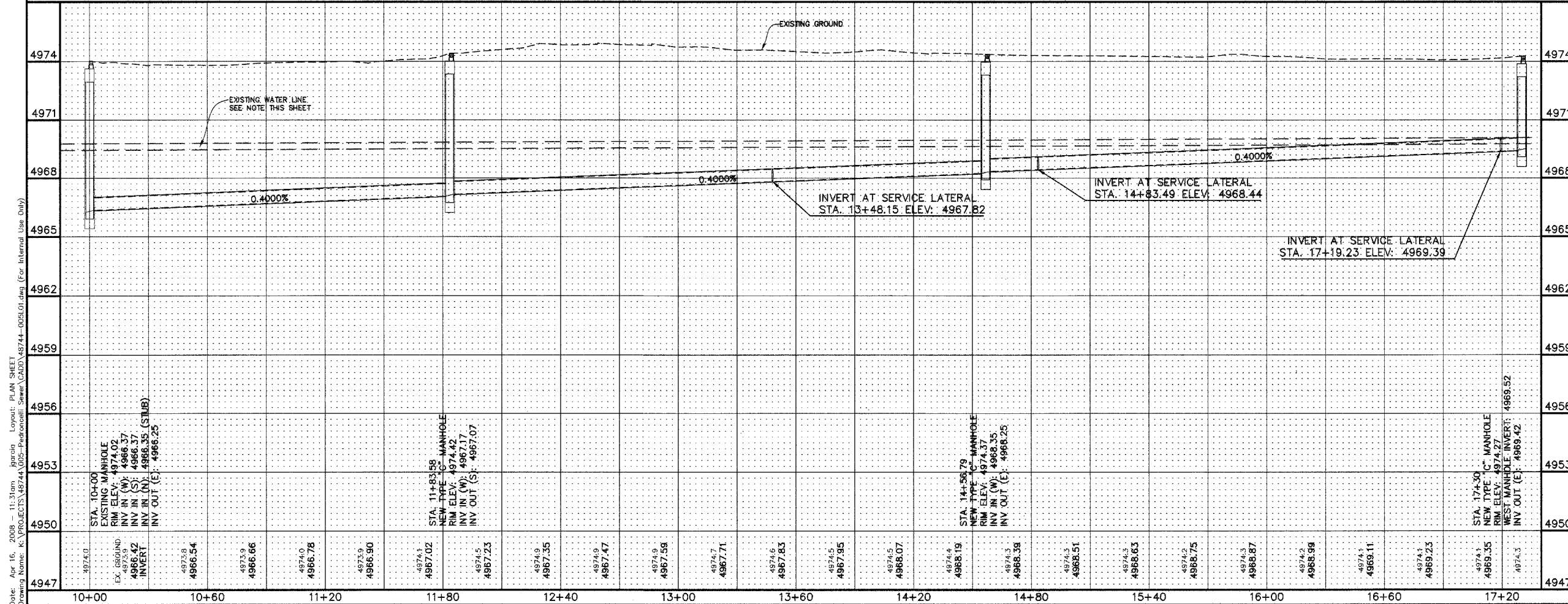


REV.	SHEETS	CITY ENGINEER	DATE	USER DEPARTMENT	DATE	USER DEPARTMENT	DATE
ENGINEERS STAMP & SIGNATURE		APPROVALS		ENGINEER		DATE	
		DRC Chairman		4/16/08		APPROVED FOR CONSTRUCTION	
		Transportation		4/16/08			
		Water/Wastewater		4/16/08			
		Hydrology		4/16/08			
		C.I.P.		4/16/08			
		Constr. Coord.					
CITY PROJECT No.				468361		Sheet 1 of 2	



SCALE
1" = 30' HORIZ.
1" = 3' VERT.

DATUM
COORDINATES SHOWN ARE NAD 1927
ELEVATIONS ARE SLD 1929



AS BUILT INFORMATION

CONTRACTOR	DATE

BENCH MARKS

THE STATION IS LOCATED 3.5 MILES NORTH OF DOWNTOWN ALBUQUERQUE. TO REACH THE STATION FROM THE INTERSECTION OF I-40 AND RIO GRANDE BOULEVARD 2.3 MILES TO GO NORTH ON RIO GRANDE BOULEVARD 2.3 MILES TO GREGIOS RD. THE STATION IS ON THE NE QUADRANT OF THE INTERSECTION. THE STATION MARK IS A CITY OF ALBUQUERQUE SURVEY CONTROL 3 1/4 INCH ALUMINUM DISC SET IN THE TOP OF SIDEWALK AND IS STAMPED "11-F13R 1985". ELEVATION = 4971.003 (SLD 1929)

SURVEY INFORMATION

FIELD NOTES	DATE	BY

NOTES

- THE WATERLINES SHOWN ON THIS PLAN AND PROFILE ARE SHOWN FOR INFORMATION ONLY TO LET THE CONTRACTOR KNOW THAT THERE IS A WATERLINE IN PEDRONCELLI ROAD AND CIMINO ROAD. THE SIZE, LOCATION, AND DEPTH OF THESE WATERLINES IS UNKNOWN.
- THE SEWER SERVICE LINES SHOWN ON THIS PLAN AND PROFILE ARE SHOWN FOR INFORMATION ONLY TO ILLUSTRATE FEASIBILITY OF A SEWER SERVICE TO THE HOMES SHOWN. THE CONTRACTOR SHALL COORDINATE THE LOCATION OF THE SERVICE LINE WITH THE PROPERTY OWNER TO ENSURE THE SHORTEST POSSIBLE ROUTE TO THE HOME'S EXISTING SEWER OUTLET.
- THE CONTRACTOR SHALL INSTALL THE SEWER SERVICE LINE TO THE RIGHT-OF-WAY LINE IN ACCORDANCE WITH THE STANDARD SPECIFICATIONS.
- PAYMENT FOR GREGIOS ROAD, GREGIOS PLACE, AND PEDRONCELLI ROAD AND CIMINO ROAD SHALL BE RESTORED IN ACCORDANCE WITH STANDARD DRAWING 2400-16.
- THE CONTRACTOR SHALL NOTIFY THE FIRE MARSHALL IF THE WATER SERVICE TO THE EXISTING FIRE HYDRANT WILL BE DISRUPTED. THE CONTRACTOR SHALL ALSO PLACE A PLASTIC BAG OVER THE FIRE HYDRANT FOR THE DURATION OF THE OUTAGE.
- PROPERTY AND RIGHT-OF-WAY LINES SHOWN ARE APPROXIMATE, AND ARE BASED ON AVAILABLE RECORD INFORMATION. NO BOUNDARY SURVEY WAS PERFORMED.
- CONTRACTOR SHALL INFORM RESIDENTS ON CIMINO ROAD WHEN CONSTRUCTION ACTIVITIES ARE GOING TO BEGIN EACH DAY, AND ALLOW RESIDENTS TO MOVE VEHICLES IF NECESSARY PRIOR TO BEGINNING WORK. CONTRACTOR SHALL MAINTAIN ROADWAYS IN PASSABLE CONDITION AFTER EACH WORK DAY SO THAT RESIDENTS MAY ACCESS THEIR HOMES ONCE WORK HAS BEEN COMPLETED FOR THE DAY.

B. REPLACEMENT PAVEMENT SHALL BE PER COA STA. 0+00, 2" TYPE "C" ASPHALT FROM STA. 10+00 TO STA. 17+20 (R250). 16 4/16/08 FOR SUBGRADE

REVISIONS

NO.	DATE	REMARKS	BY

APPROVE

APR 16 2008
DESIGN REVIEW COMMITTEE

APPROVE

JUN 04 2008
CITY ENGINEER

ALBUQUERQUE/BERNALILLO COUNTY WATER UTILITY AUTHORITY

TITLE: SANITARY SEWER EXTENSION PEDRONCELLI ROAD & CIMINO ROAD

City Project No. 468361 Zone Map No. F-13-Z Sheet 2 of 2