

CONSTRUCTION PLANS FOR OCTOPUS CAR WASH 7 BAR RANCH, TRACT C-3-B UTILITY, NMSR 528 MEDIAN AND CHANNEL IMPROVEMENTS

GENERAL NOTES

- ALL WORK DETAILED ON THESE PLANS, EXCEPT AS OTHERWISE STATED OR PROVIDED HEREON, SHALL BE CONSTRUCTED IN ACCORDANCE WITH THE CITY OF ALBUQUERQUE STANDARD SPECIFICATIONS FOR PUBLIC WORKS CONSTRUCTION - 1986 EDITION, AS AMENDED THROUGH UPDATE NO. 4.
- TWO (2) WORKING DAYS PRIOR TO ANY EXCAVATION, CONTRACTOR MUST CONTACT ONE CALL SYSTEM, INC., 260-1990, FOR LOCATION OF EXISTING UTILITIES. CONTRACT NEW MEXICO UTILITY INC. FOR WATER AND SEWER LOCATION. CONTRACTOR SHALL COORDINATE ALL UTILITY WORK INCLUDING SHUTOFF OF EXISTING UTILITIES FOR NEW CONNECTIONS (FIRE PROTECTION, DOMESTIC WATER, SEWER, STORM DRAIN, GAS PIPING, ETC.) WITH ENGINEER, OWNER, AND LOCAL UTILITY REPRESENTATIVES.
- THESE DRAWINGS REFLECT INFORMATION ON UTILITIES GATHERED BY SITE INSPECTION, DISCUSSIONS WITH MUNICIPAL OFFICIALS, AND PREVIOUS CONSTRUCTION DRAWINGS. IT IS POSSIBLE THAT THE EXACT LOCATION OF LINES AND UTILITY CONNECTION POINTS IN THE VICINITY OF THE REQUIRED WORK MAY BE DIFFERENT FROM THE LOCATION SHOWN ON THESE DRAWINGS. PRIOR TO CONSTRUCTION, THE CONTRACTOR SHALL EXCAVATE AND VERIFY THE HORIZONTAL AND VERTICAL LOCATIONS OF ALL OBSTRUCTIONS. SHOULD A CONFLICT EXIST, THE CONTRACTOR SHALL NOTIFY THE ENGINEER SO THAT THE CONFLICT CAN BE RESOLVED WITH A MINIMUM AMOUNT OF DELAY.
- ALL GAS, ELECTRIC, TELEPHONE LINES, CABLES, AND APPURTENANCES ENCOUNTERED DURING CONSTRUCTION THAT REQUIRE RELOCATION SHALL BE RELOCATED BY THE RESPECTIVE UTILITY. CONTRACTOR SHALL BE RESPONSIBLE FOR COORDINATION OF ALL NECESSARY UTILITY ADJUSTMENTS.
- IT WILL BE THE CONTRACTOR'S RESPONSIBILITY TO PROTECT AND MAINTAIN IN SERVICE ALL EXISTING UTILITIES.
- ALL WORK ON THIS PROJECT SHALL BE PERFORMED IN ACCORDANCE WITH APPLICABLE FEDERAL, STATE, AND LOCAL LAWS, RULES, AND REGULATIONS CONCERNING CONSTRUCTION SAFETY AND HEALTH. THESE DRAWINGS DO NOT INCLUDE NECESSARY COMPONENTS FOR CONSTRUCTION SAFETY WHICH SHALL REMAIN THE CONTRACTOR'S RESPONSIBILITY.
- CONTRACTOR SHALL BE RESPONSIBLE FOR APPLYING FOR AND OBTAINING ALL APPLICABLE PERMITS REQUIRED FOR CONSTRUCTION OF THE IMPROVEMENTS FROM THE CITY OF ALBUQUERQUE, AND THE NEW MEXICO STATE HIGHWAY AND TRANSPORTATION DEPARTMENT. ALL PERMITS SHALL BE OBTAINED BEFORE BEGINNING ANY WORK.
- THE CONTRACTOR SHALL EXERCISE REASONABLE CARE DURING CONSTRUCTION TO PREVENT THE MOVEMENT OF SEDIMENT FROM THE SITE INTO EXISTING STREETS. LOOSE SOIL STOCKPILES DURING CONSTRUCTION ACTIVITIES SHALL BE PROMPTLY CLEANED UP OR PROTECTED FROM BEING CARRIED DOWNSTREAM BY FLOWING WATER.
- ALL AREAS DISTURBED BY CONTRACTORS WORK SHALL BE REVEGETATED IN ACCORDANCE WITH CITY OF ALBUQUERQUE TECHNICAL SECTION 1012.
- DISPOSAL OF ALL WASTE MATERIAL SHALL BE THE RESPONSIBILITY OF THE CONTRACTOR AS SPECIFIED IN SECTION 6.14 OF THE GENERAL CONDITIONS OF THE SPECIFICATIONS.
 - A DISPOSAL SITE FOR ALL EXCESS EXCAVATION MATERIAL, ASPHALTIC PAVING, CONCRETE CURBS AND SIDEWALKS, ETC., SHALL BE OBTAINED BY THE CONTRACTOR IN COMPLIANCE WITH APPLICABLE ENVIRONMENTAL REGULATIONS AND APPROVED BY THE FIELD ENGINEER. ALL COSTS INCURRED IN OBTAINING A DISPOSAL SITE AND HAUL THERETO SHALL BE CONSIDERED INCIDENTAL TO THE PROJECT AND NO SEPARATE MEASUREMENT OR PAYMENT SHALL BE MADE.
- THE CONTRACTOR WILL BE REQUIRED TO CONFINED HIS WORK WITHIN THE CONSTRUCTION LIMITS AND/OR PUBLIC RIGHT-OF-WAY TO PRESERVE EXISTING VEGETATION AND PRIVATE PROPERTY. THE CONTRACTOR SHALL NOT STORE ANY EQUIPMENT OR MATERIAL WITHIN THE RIGHT-OF-WAY UNLESS THE EQUIPMENT OR MATERIAL IS PROPERLY SHIELDED UTILIZING CURRENT SAFETY DESIGN AND INSTALLATION METHODS. THE SAFETY DESIGN FOR THIS SHIELDING SHALL BE PROVIDED BY THE CONTRACTOR AND MUST BE APPROVED BY THE ENGINEER BEFORE IMPLEMENTING. THERE WILL BE NO DIRECT MEASUREMENT OR PAYMENT FOR THE DESIGN, MATERIALS, INSTALLATION, AND REMOVAL OF THE SAFETY BARRIER.
- CONTRACTOR SHALL MAINTAIN ACCESS TO ADJACENT PROPERTIES DURING CONSTRUCTION. REFER TO SECTION 19 OF THE SPECIFICATIONS.
- CONTRACTOR SHALL COORDINATE WITH NEW MEXICO UTILITIES, INC., A MINIMUM OF THREE (3) WORKING DAYS PRIOR TO IMPLEMENTING ANY PROPOSED WATER VALVE SHUT-OFF AND PRIOR TO INITIATING ANY WORK AFFECTING ANY EXISTING PUBLIC OR PRIVATE UTILITY. NMUI SHALL PERFORM ALL VALVE SHUTOFFS.
- WHEN ABUTTING NEW PAVEMENT TO EXISTING, SAWCUT EXISTING PAVEMENT TO A STRAIGHT EDGE AND AT A RIGHT ANGLE, OR AS APPROVED BY THE PROJECT ENGINEER, TO REMOVE ANY BROKEN OR CRACKED PAVEMENT. ALL SAWCUT PAVEMENT SHALL BE SPRAYED WITH TACK COAT PRIOR TO INSTALLATION OF ADJOINING ASPHALT PAVEMENT.
- A MINIMUM OF THREE (3) WORKING DAYS PRIOR TO COMMENCING CONSTRUCTION, THE CONTRACTOR SHALL SUBMIT A DETAILED CONSTRUCTION SCHEDULE AND A CONSTRUCTION SIGNING AND BARRICADE PLAN TO CONSTRUCTION COORDINATION. TWO (2) WORKING DAYS PRIOR TO COMMENCING CONSTRUCTION, THE CONTRACTOR SHALL OBTAIN A BARRICADING PERMIT FROM THE TRAFFIC ENGINEERING DIVISION. CONTRACTOR SHALL NOTIFY BARRICADE ENGINEER (768-2551) PRIOR TO OCCUPYING AN INTERSECTION. REFER TO SECTION 19 OF THE SPECIFICATIONS.
- THE CONTRACTOR SHALL PLACE THE PERMANENT PAVEMENT MARKINGS AS SHOWN ON THE DRAWING. ALL CONFLICTING EXISTING STRIPING SHALL BE REMOVED BY EITHER GRINDING OR WITH APPROVED CHEMICAL PROCEDURES.
- THIS DOCUMENT, AND THE IDEAS AND DESIGNS INCORPORATED HEREIN, ARE INTENDED FOR USE ON THIS PROJECT AND IS NOT TO BE USED, IN WHOLE OR IN PART, FOR ANY OTHER PROJECT WITHOUT THE WRITTEN AUTHORIZATION OF EASTERLING & ASSOCIATES, INC. IN THE EVENT OF UNAUTHORIZED USE, THE USER ASSUMES ALL RESPONSIBILITY AND LIABILITY WHICH RESULTS.
- CONTRACTOR SHALL NOTIFY THE ENGINEER NOT LESS THAN SEVEN (7) DAYS PRIOR TO STARTING WORK IN ORDER THAT THE ENGINEER MAY TAKE NECESSARY MEASURES TO INSURE THE PRESERVATION OF SURVEY MONUMENTS. CONTRACTOR SHALL NOT DISTURB PERMANENT SURVEY MONUMENTS WITHOUT THE CONSENT OF THE ENGINEER AND SHALL NOTIFY THE ENGINEER AND BEAR THE EXPENSE OF REPLACING ANY THAT MAY BE DISTURBED WITHOUT PERMISSION. REPLACEMENT SHALL BE DONE ONLY BY THE ENGINEER. WHEN A CHANGE IS MADE IN THE FINISHED ELEVATION OF THE PAVEMENT OR ANY ROADWAY IN WHICH A PERMANENT SURVEY MONUMENT IS LOCATED, CONTRACTOR SHALL, AT HIS OWN EXPENSE, ADJUST THE MONUMENT COVER TO THE NEW GRADE UNLESS OTHERWISE SPECIFIED. REFER TO SECTION 44 OF THE SPECIFICATIONS.

[X] ALL UTILITIES AND UTILITY SERVICE LINES SHALL BE INSTALLED PRIOR TO PAVING.

[X] BACKFILL, COMPACTION AND PAVING SHALL BE ACCORDING TO C.O.A. STD. DWG. 2465.

[X] TACK COAT REQUIREMENTS SHALL BE DETERMINED BY THE FIELD ENGINEER.

[X] SIDEWALKS AND WHEELCHAIR RAMPS WITHIN THE CURB RETURNS SHALL BE CONSTRUCTED WHEREVER A NEW CURB RETURN IS CONSTRUCTED.

[] IF CURB IS DEPRESSED FOR A HANDICAP RAMP, THE RAMP SHALL BE CONSTRUCTED PRIOR TO ACCEPTANCE OF THE CURB AND GUTTER.

[X] ALL STORM DRAINAGE FACILITIES SHALL BE COMPLETED PRIOR TO FINAL ACCEPTANCE.

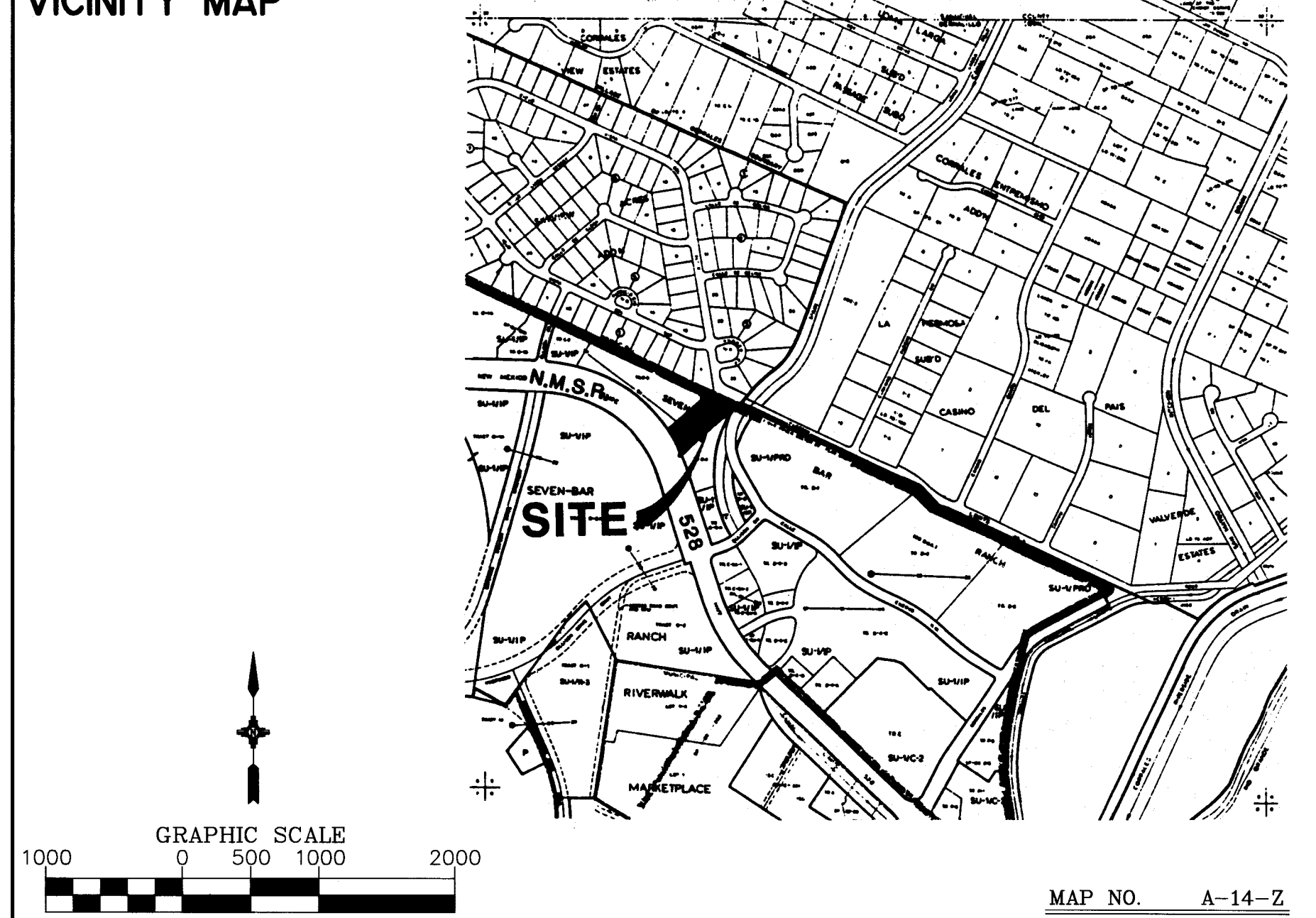
APPROVAL OF AS BUILT DRAWINGS
CHIEF CONSTRUCTION ENGINEER
Ronald P. Bohannon
DATE: 4-22-94

1 2 3 4 5 6 7 8 9 10 11 12 13 14 15
26 4709.9 900194

ABBREVIATIONS

AC - ASBESTOS CEMENT	DD - DEFLECT DOWN	FO - FIBER OPTIC CABLE	PRC - POINT OF REVERSE CURVATURE	SAS - SANITARY SEWER
ARV - AIR/VACUUM RELEASE VALVE	DIP - DUCTILE IRON PIPE	G - GAS	PRV - PRESSURE RELIEF VALVE	SD - STORM DRAIN
B - BASELINE	DU - DEFLECT UP	HP - HIGH PRESSURE	PT - POINT OF TANGENCY	TC - TOP OF CURB
BCT - BEGIN CROWN TRANSITION	E - EXISTING	I - INSTALL	PUE - PUBLIC UTILITY EASEMENT	T - TELEPHONE
C - CONSTRUCT	ECT - END CROWN TRANSITION	LP - LIGHT POLE	R/REL - REMOVE & RELOCATE	TL - TRAFFIC LIGHT
CAV - COMBINATION AIR VALVE	ELEV - ELEVATION	MH - MANHOLE	R/PLC - REMOVE & REPLACE	TP - TOP OF PIPE
CCP - CONCRETE CYLINDER PIPE	F-F - FACE TO FACE	NMUI - NEW MEXICO UTILITIES, INC.	PVC - POLY VINYL CHLORIDE	UE - UNDERGROUND ELECTRIC
CI - CAST IRON	F/F - FEET/FOOT	PC - POINT OF CURVATURE	R - REMOVE	VCP - VITRIFIED CLAY PIPE
CL - CENTERLINE	FH - FIRE HYDRANT	PCC - POINT OF COMPOUND CURVATURE	REL - RELOCATE	VER - VERIFY LOCATION
COA - CITY OF ALBUQUERQUE	FL - FLOW LINE	POC - POINT ON CURVE	ROW - RIGHT-OF-WAY	W OR WL - WATERLINE
		PP - POWER POLE		X - CROSSING

VICINITY MAP

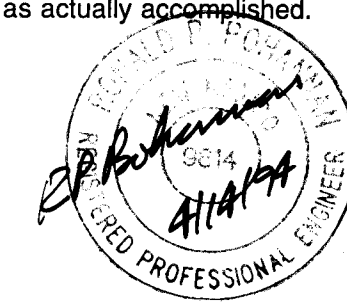


SHEET INDEX

- 1 of 3 COVER
2 of 3 WATER & SEWER IMPROVEMENTS
NMSR 528 MEDIAN IMPROVEMENTS
3 of 3 CHANNEL & CROSSING STRUCTURE
PLAN, PROFILE & DETAILS

RECORD DRAWING - MEDIAN IMPROVEMENTS

I, Ronald P. Bohannon, hereby certify that these drawings have been revised in accordance with the information furnished by Surv-Tek, Inc. to approximately reflect the NM 528 median construction as actually accomplished.



R. P. Bohannon Date: 4/12/94
Ronald P. Bohannon, P.E.
N.M.P.E. No. 9814

UTILITY COMPANY CONTACTS

PNM

Tom Kraftiger
Alvarado square
Mail Stop 0208
Albuquerque, New Mexico 87158
(505) 848-4947

GAS CO.

Tim Cynova
4625 Edith Blvd., NE
Albuquerque, New Mexico 87107
(505) 761-7775

US WEST COMMUNICATIONS

Becky Olesen
201 Third Street
P.O. Box 1355, Sta. 952
Albuquerque, New Mexico 87103
(505) 245-6694

AT&T

Ishmael Pantoja
111 Third ST., NW
Albuquerque, New Mexico 87103
(505) 842-2806

JONES INTERCABLE

Karen Shore
4611 Montbel Pl., NE
P.O. Box 27138
Albuquerque, NM 87125-7138
(505) 761-6220

NEW MEXICO UTILITIES, INC.

Bob Goy
4700 Irving, NW
Albuquerque, New Mexico 87114
(505) 898-2661
(505) 898-6379 Fax

REV.	SHEETS	CITY ENGINEER	DATE	USER DEPARTMENT	DATE	USER DEPARTMENT	DATE
APPROVAL OF REVISIONS							

	EASTERLING & ASSOCIATES, INC. CONSULTING ENGINEERS 10131 COORS RD., NW, SUITE H - 7 ALBUQUERQUE, NEW MEXICO 87114 (505) 898-8021 FAX (505) 898-8501	APPROVED FOR CONSTRUCTION <i>Ronald P. Bohannon</i> CITY ENGINEER DATE
	PROJECT NUMBER 4709.90	SHEET 1 OF 3

EAL Job # 3530.2

SCANNED BY
BY LASON

SCANNED BY
BY LASON

TRACT O-2A-1

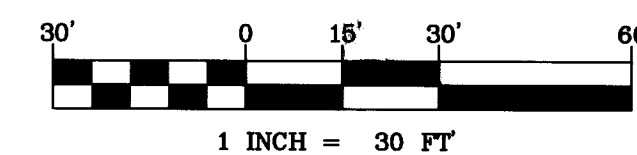
N.M.S.R. 528

7 BAR RANCH
TRACT C-3-A

TRACT C-3-B

TRACT C-3-C
AMAFCA DRAINAGE R/W

TRACT C-4-A



LINE TABLE

LINE	DIRECTION	DISTANCE
L1	N46°52'06"E	50.42'
L2	S43°07'54"E	58.52'
L3	S46°52'06"W	8.70'
L4	S43°07'54"E	24.00'
L5	S46°52'06"W	10.00'
L6	S43°07'54"E	12.00'
L7	S46°52'06"W	7.32'
L8	N46°52'06"E	210.00'
L9	N46°52'06"E	11.00'
L10	S46°52'06"W	22.68'
L11	S43°07'54"E	7.00'
L12	N46°52'06"E	6.00'
L13	S43°07'54"E	15.00'
L14	S46°52'06"W	111.00'
L15	N43°07'54"W	15.00'
L16	N46°52'06"E	1.28'
L17	N43°07'54"W	39.76'
L18	N43°07'54"W	65.01'
L19	N43°07'54"W	65.01'
L20	S46°52'06"W	143.66'

CURVE TABLE

CURVE	RADIUS	LENGTH	DELTA
C1	20.00'	31.42'	90°00'00"
C2	5.00'	7.85'	90°00'00"
C3	4.00'	8.33'	119°16'30"
C4	45.00'	91.44'	116°25'22"
C5	56.00'	25.79'	26°23'16"
C6	45.00'	132.30'	168°26'51"
C7	75.00'	19.42'	14°50'07"
C8	3.00'	4.71'	90°00'00"
C9	3.00'	4.71'	90°00'00"
C10	3.00'	4.71'	90°00'00"
C11	10.00'	7.95'	45°34'23"
C12	30.00'	23.26'	44°25'37"
C13	20.00'	31.50'	90°14'27"
C14	2.00'	6.28'	180°00'00"
C15	2.00'	6.28'	180°00'00"
C16	12.00'	43.71'	208°41'40"
C17	45.00'	22.54'	28°41'40"
C18	100.00'	35.54'	20°21'51"
C19	12.00'	41.96'	200°21'51"
MC1	1.25'	3.93'	180°00'00"
MC2	1330.04'	92.37'	04°58'46"
MC3	160.00'	43.48'	16°26'52"
MC4	160.00'	34.70'	13°16'21"
MC5	1320.04'	50.00'	02°10'16"
MC6	6.25'	19.63'	180°00'00"
MC7	1332.54'	220.76'	09°29'31"
MC8	4.00'	10.75'	164°10'15"
MC9	50.00'	21.94'	25°08'12"
MC10	1320.04'	93.31'	04°03'00"
MC11	6.25'	19.63'	180°00'00"
MC12	1332.54'	113.79'	04°53'34"

PROJECT BENCHMARK

NM448-N12
ELEV. = 5023.411
NMSHC BRASS TABLET SET IN CONCRETE,
550' SOUTH OF CORRALES RD. CENTERLINE
AND 60' WEST OF COORS RD. CENTERLINE,
AT US WEST SUB STATION.

KEYED NOTES

- INSTALL TYPE I PINNED CURB PER COA DETAIL 2415.
- INSTALL MEDIAN PAVEMENT PER COA DETAIL 2502.
- 4" BROKEN WHITE REFLECTORIZED ADHESIVE NON-METALLIC PAVEMENT MARKING TAPE, (REPEATING PATTERN OF 10 FT. STRIPE AND 30 FT. SKIP).
- 4" SOLID WHITE REFLECTORIZED ADHESIVE NON-METALLIC PAVEMENT MARKING TAPE.
- PAINT CURB FACE WITH TWO APPLICATIONS OF SOLID YELLOW REFLECTORIZED PAINT WITHIN THE LIMITS SHOWN. ALLOW MINIMUM OF 6 HOURS BETWEEN APPLICATIONS.
- REFLECTORIZED ADHESIVE NON-METALLIC PAVEMENT MARKING SYMBOL "LEFT TURN ARROW."
- REFLECTORIZED ADHESIVE NON-METALLIC PAVEMENT MARKING SYMBOL "ONLY."
- 4" SOLID YELLOW REFLECTORIZED ADHESIVE NON-METALLIC PAVEMENT MARKING TAPE.
- 4" BROKEN YELLOW REFLECTORIZED ADHESIVE NON-METALLIC PAVEMENT MARKING TAPE (REPEATING PATTERN OF 10 FT. STRIPE AND 30 FT. SKIP).
- COMPACTED EARTH FILL MEDIAN.
- INSTALL MODIFIED MEDIAN CURB. SEE DETAIL AT LEFT.

NOTES

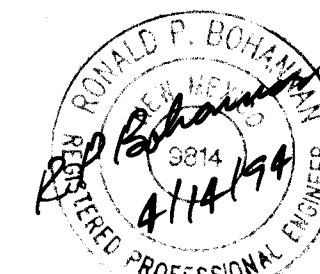
ALL CONFLICTING EXISTING STRIPING SHALL BE REMOVED BY EITHER GRINDING OR WITH APPROVED CHEMICAL PROCEDURES.

ROADWAY MARKINGS SHALL BE PLACED PER THE MANUAL OF UNIFORM TRAFFIC CONTROL DEVICES (MUTCD) PART III SECTIONS 3A AND 3B.

WATER AND SEWER LINE INSTALLATION SHALL BE PER NEW MEXICO UTILITIES, INC. SPECIFICATIONS FOR WATER AND WASTEWATER FACILITIES, REV. 5-26-92.

RECORD DRAWING — MEDIAN IMPROVEMENTS


I, Ronald P. Bohannon, hereby certify that these drawings have been revised in accordance with the information furnished by Surv-Tek, Inc. to approximately reflect the NM 528 median construction as actually accomplished.

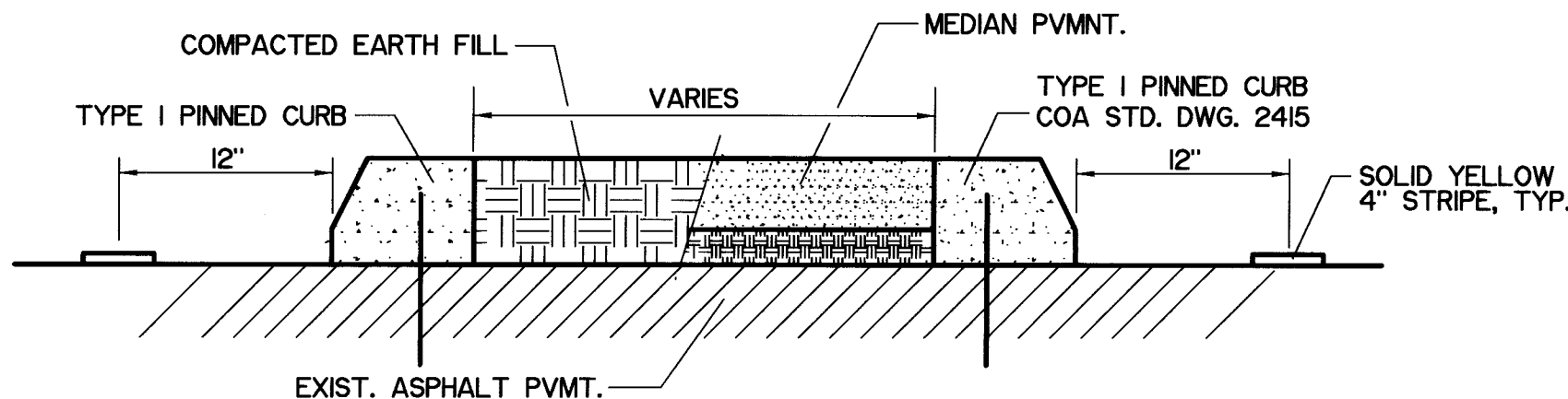


R.P. Bohannon Date: 4/14/94
Ronald P. Bohannon, P.E.
N.M.P.E. No. 9814

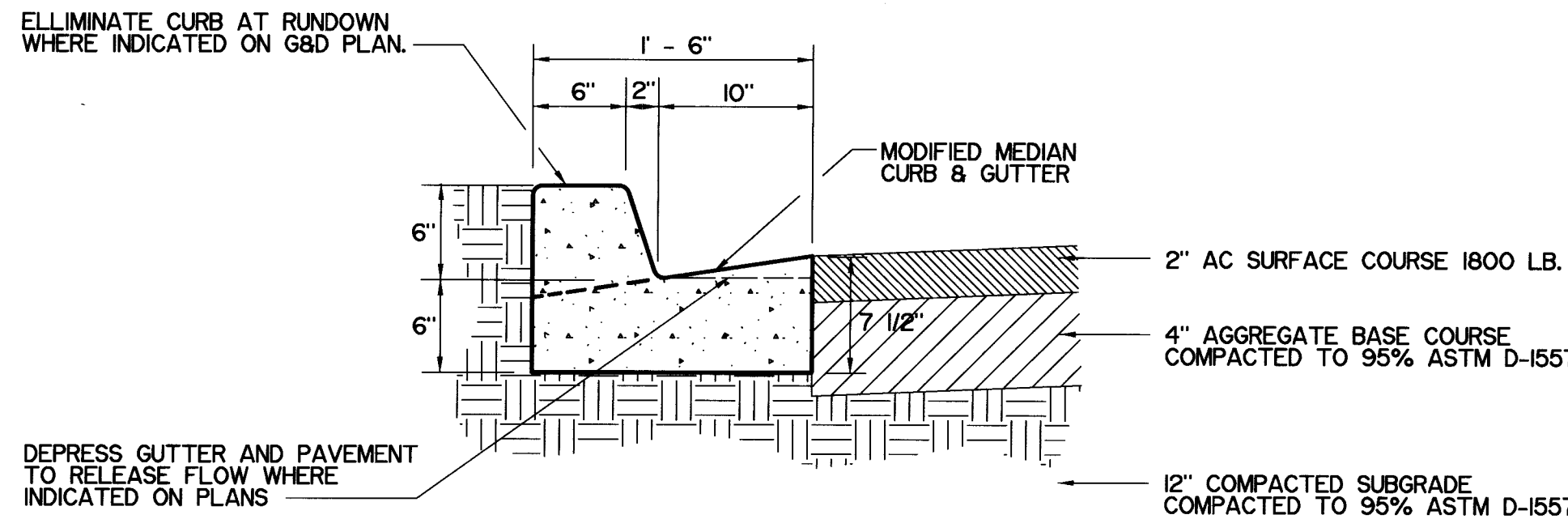
NO.	REVISIONS	BY	DATE

OCTOPUS CAR WASH
WATER & SEWER IMPROVEMENTS
NMSR 528 MEDIAN IMPROVEMENTS
7 BAR RANCH, TRACT C-3-B

	<i>EASTERLING & ASSOCIATES, INC.</i> <i>CONSULTING ENGINEERS</i> 10131 Coors Rd., NW, Suite H-718 ALBUQUERQUE, NEW MEXICO 87114 (505) 898-8021 FAX (505) 898-8501			
	DESIGNED BY: RPB	DRAWN BY: DEC	CHECKED BY: RPB	SHEET 2
	JOB NO. 4709.90	DATE: 7-93	OF 3	



TYPICAL MEDIAN SECTION
N.M.S.R. 528 ONLY
NTS



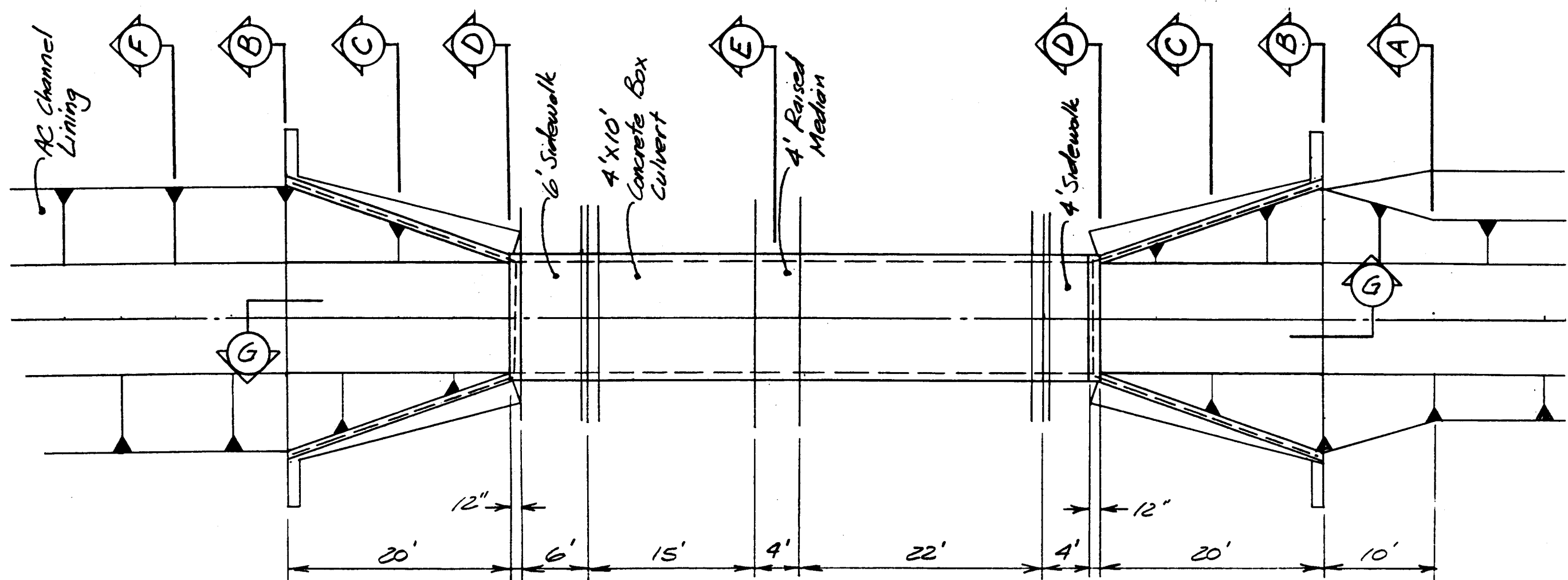
TYPICAL CURB AND PAVEMENT SECTION
NTS

C.O.A. PROJECT NO. 4709.90

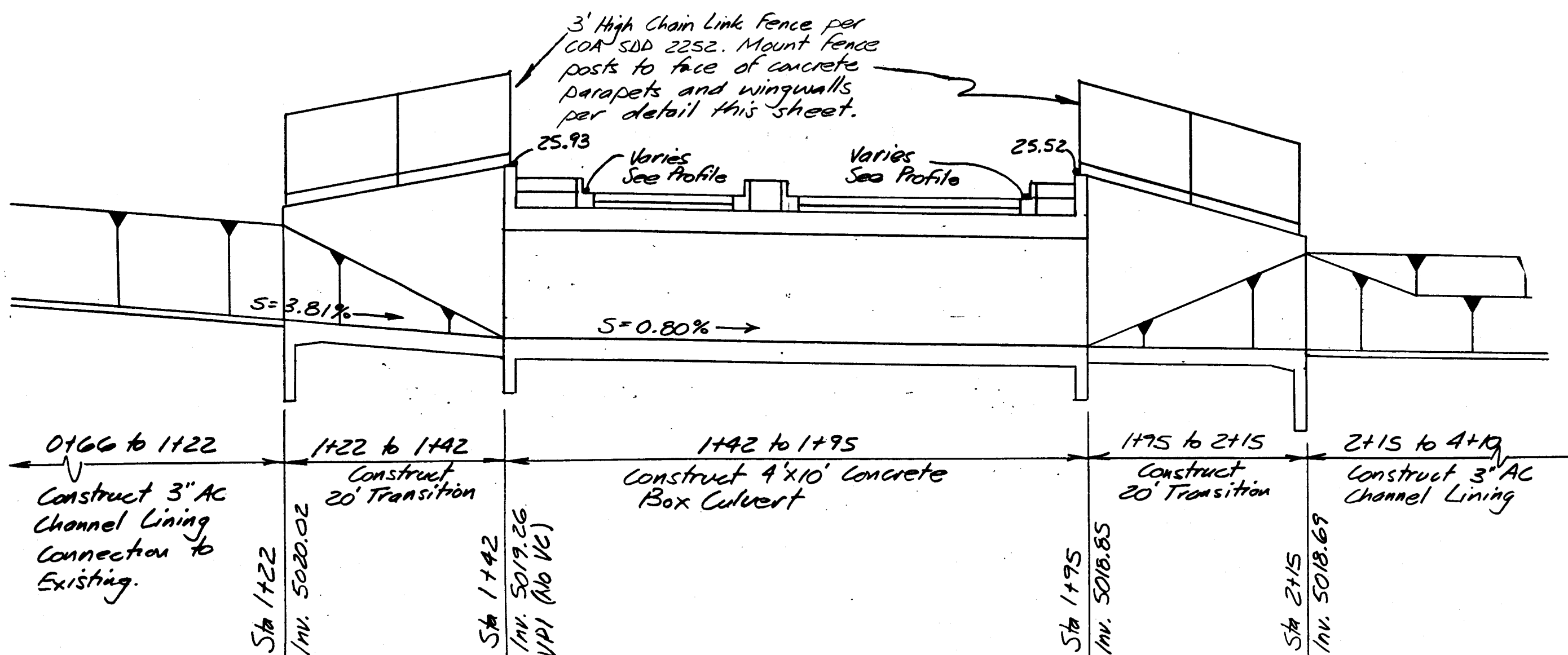
APPROVALS	BY	DATE	APPROVALS	BY	DATE
COA DRC CHAIRMAN	J. G. Gentry	10-25-93	AMAFCA	J. G. Gentry	10-25-93
COA TRANSPORTATION	R. P. Bohannon	10-25-93	AMAFCA	R. P. Bohannon	10-25-93
COA HYDROLOGY	R. P. Bohannon	10-25-93	AMAFCA	R. P. Bohannon	10-25-93
COA WATER	VIA R/W	10-25-93			
COA WASTE WATER	VIA R/W	10-25-93			
COA PARKS & REC.					

SCANNED BY
BY LASON

SCANNED BY
BY LASON

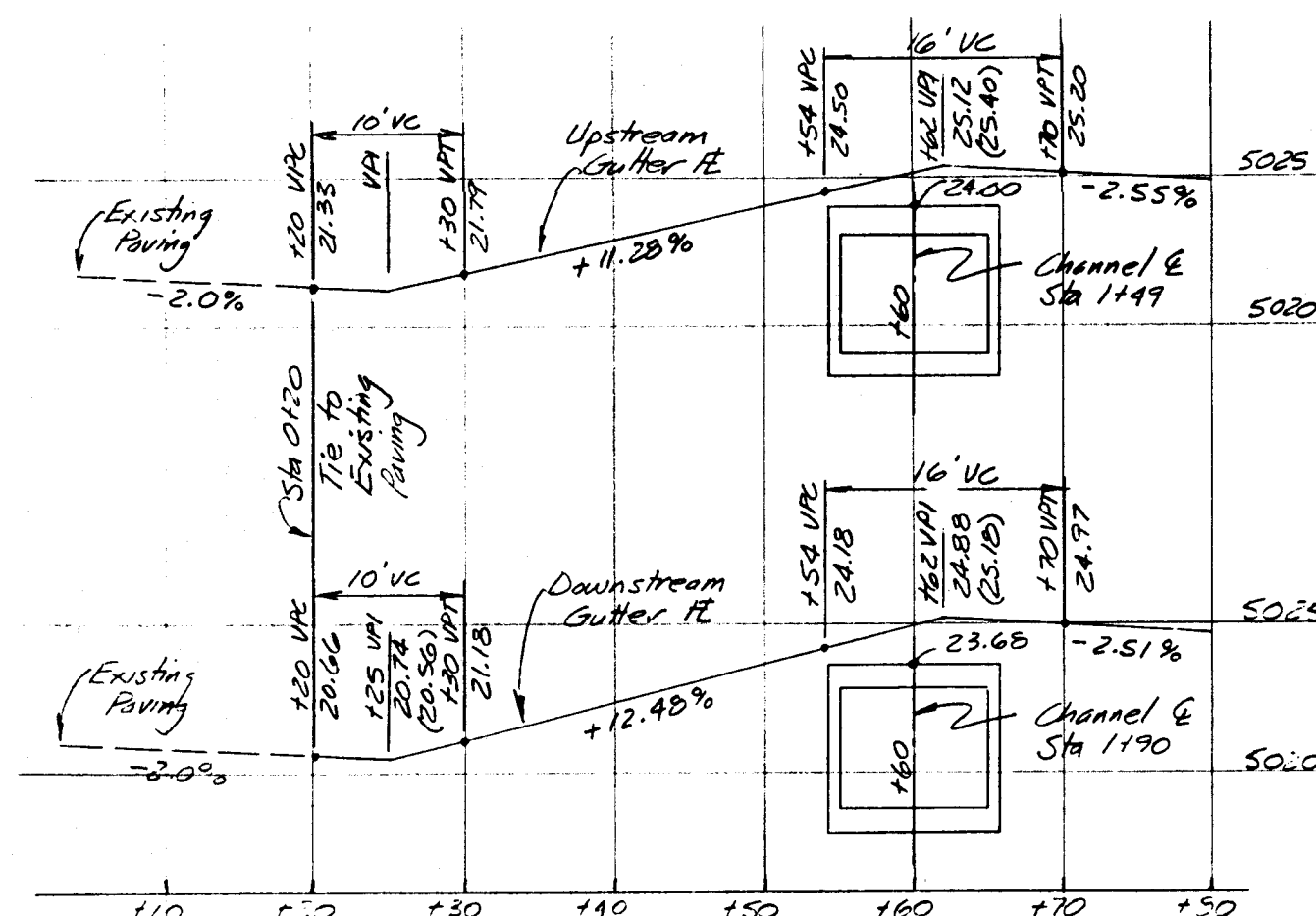


CHANNEL PLAN



CHANNEL PROFILE

- NOTES FOR CHANNEL CONSTRUCTION**
- ALL REINFORCING STEEL SHALL BE 60 KSI DEFORMED BARS. MINIMUM LAP #7 BAR = 18", #5 BAR = 13", MESH = 2 PANELS.
 - ALL CONCRETE SHALL BE 4000 PSI WITH FLYASH IN ACCORDANCE WITH CITY STANDARD SPECIFICATIONS.
 - ALL EXPOSED EDGES SHALL HAVE A 3/4" FORMED CHAMFER.
 - THE CROSSING STRUCTURE SHALL BE A STANDARD NEW MEXICO STATE HIGHWAY AND TRANSPORTATION DEPARTMENT CONCRETE BOX CULVERT, SINGLE BARREL, DESIGN NO. 1 0' TO 5' OF COVER, 4' CLEAR HEIGHT X 10' CLEAR SPAN WITH TOP PARAPETS 32" HIGH INSTEAD OF 28" HIGH AND BOTTOM CUTOFF WALLS 16" DEEP INSTEAD OF 36" DEEP.
 - DOWEL TRANSITION RETAINING WALLS AND CHANNEL BOTTOM TO CONCRETE BOX CULVERT WITH #7 DEFORMED BARS, 36" LONG, 15" ON CENTER, EMBEDDED 18".
 - BACKFILL ABUTTING VERTICAL WALLS SHALL BE COMPACTED TO 90% ASTM D-1557 AND SHALL ONLY BE PLACED AFTER WALLS HAVE GAINED SUFFICIENT STRENGTH TO PREVENT DAMAGE FROM BACKFILLING OPERATIONS.
 - LIGHT BROOM FINISH ALL EXPOSED CHANNEL LINING SURFACES. SMOOTH RUB FINISH EXPOSED VERTICAL WALLS.
 - CONTRACTOR SHALL NOTIFY AMAFCA AT LEAST TWO WORK DAYS PRIOR TO WORKING IN THE AMAFCA DRAINAGE RIGHT OF WAY. CONCRETE CHANNEL IMPROVEMENTS SHALL NOT BE POURED UNTIL AFTER AMAFCA HAS INSPECTED AND APPROVED REINFORCING STEEL.

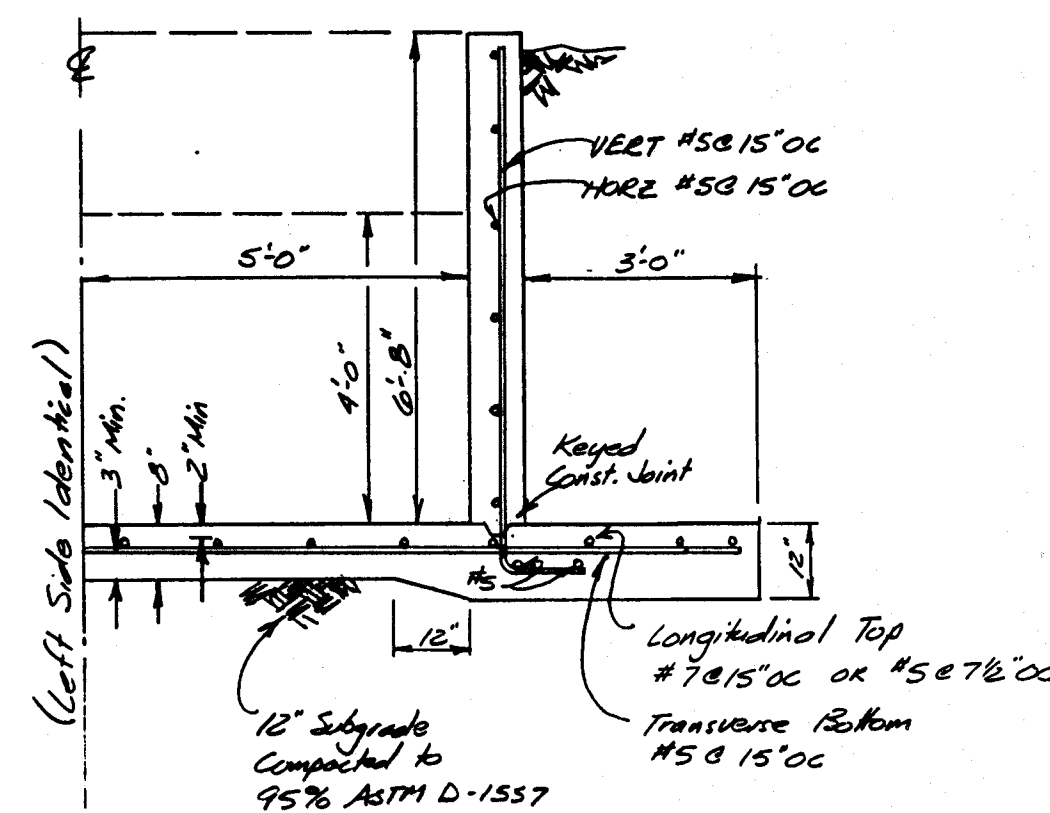


ENTRY DRIVE PROFILE
NTS

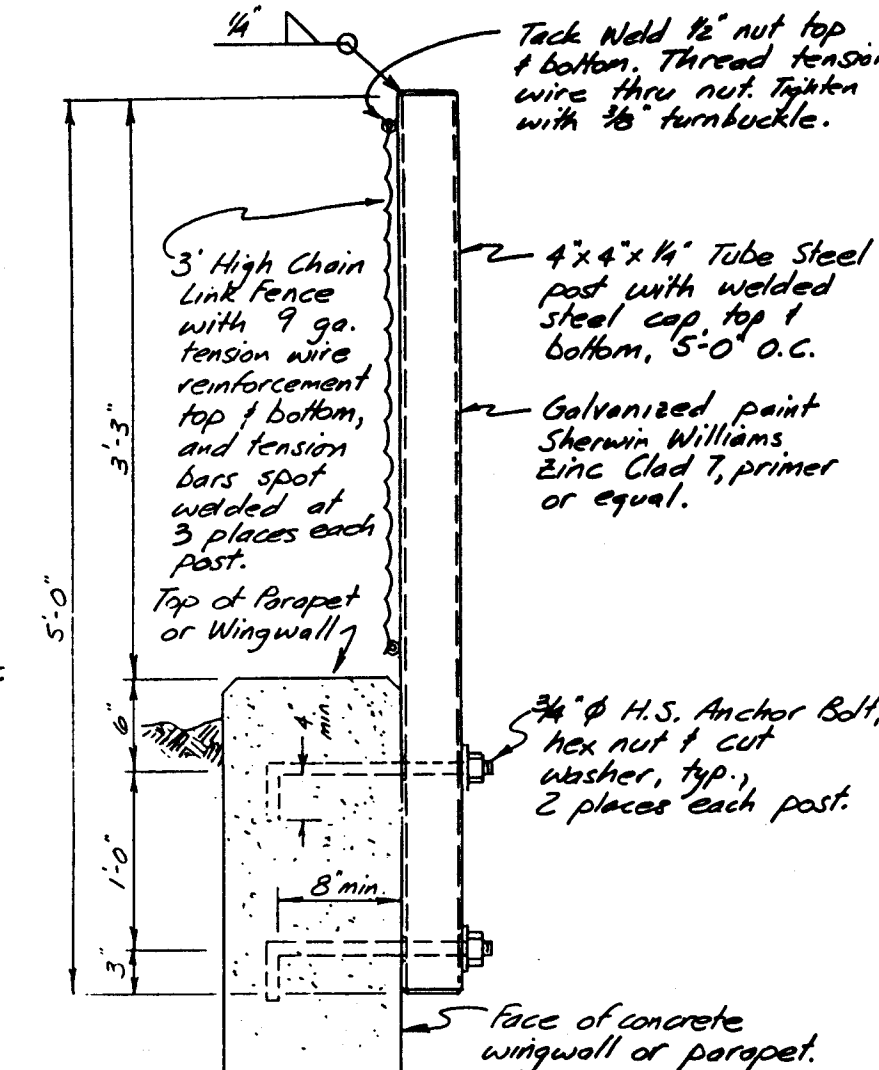
RECORD DRAWING — MEDIAN IMPROVEMENTS
I, Ronald P. Bohannon, hereby certify that these drawings have been revised in accordance with the information furnished by Surv-Tek, Inc. to approximately reflect the NM 526 median construction as actually accomplished.



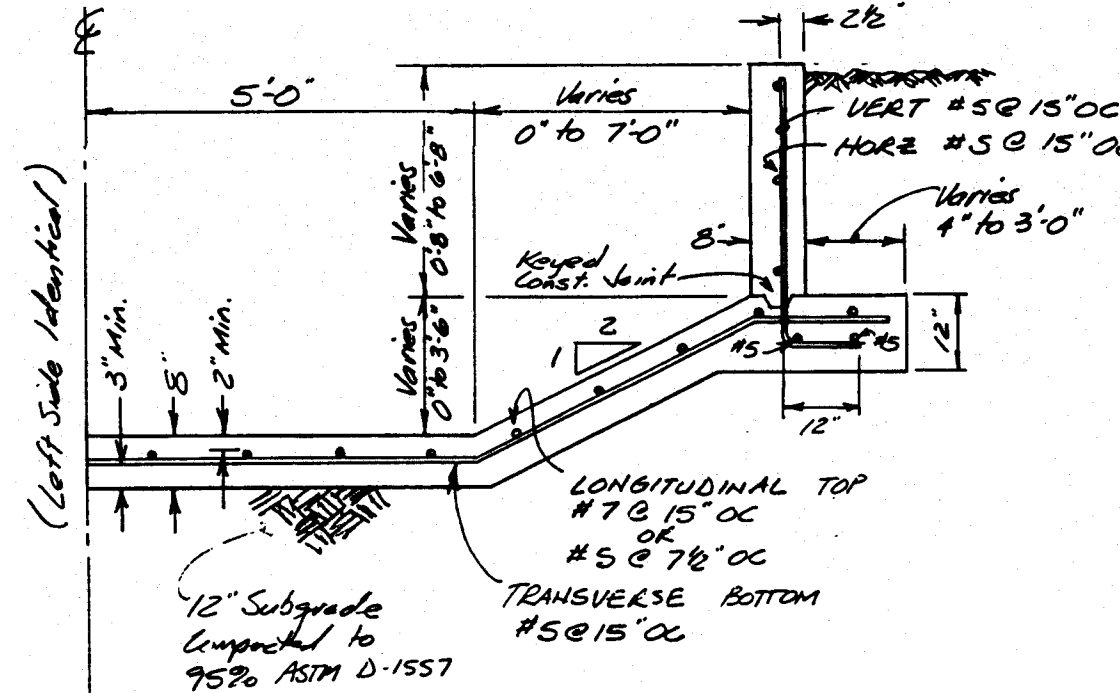
R.P. Bohannon Date: 4/14/94
Ronald P. Bohannon, P.E.
N.M.P.E. No. 9814



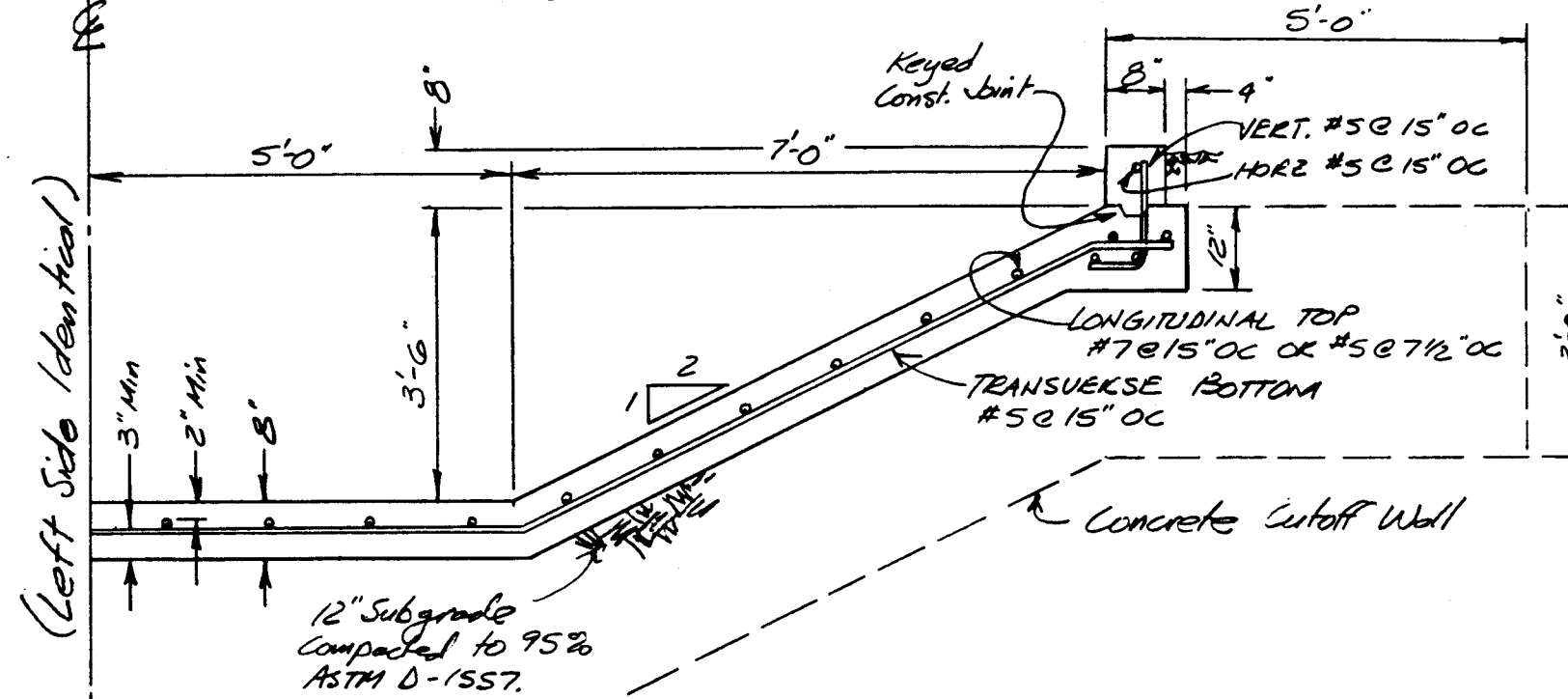
SECTION D
NTS



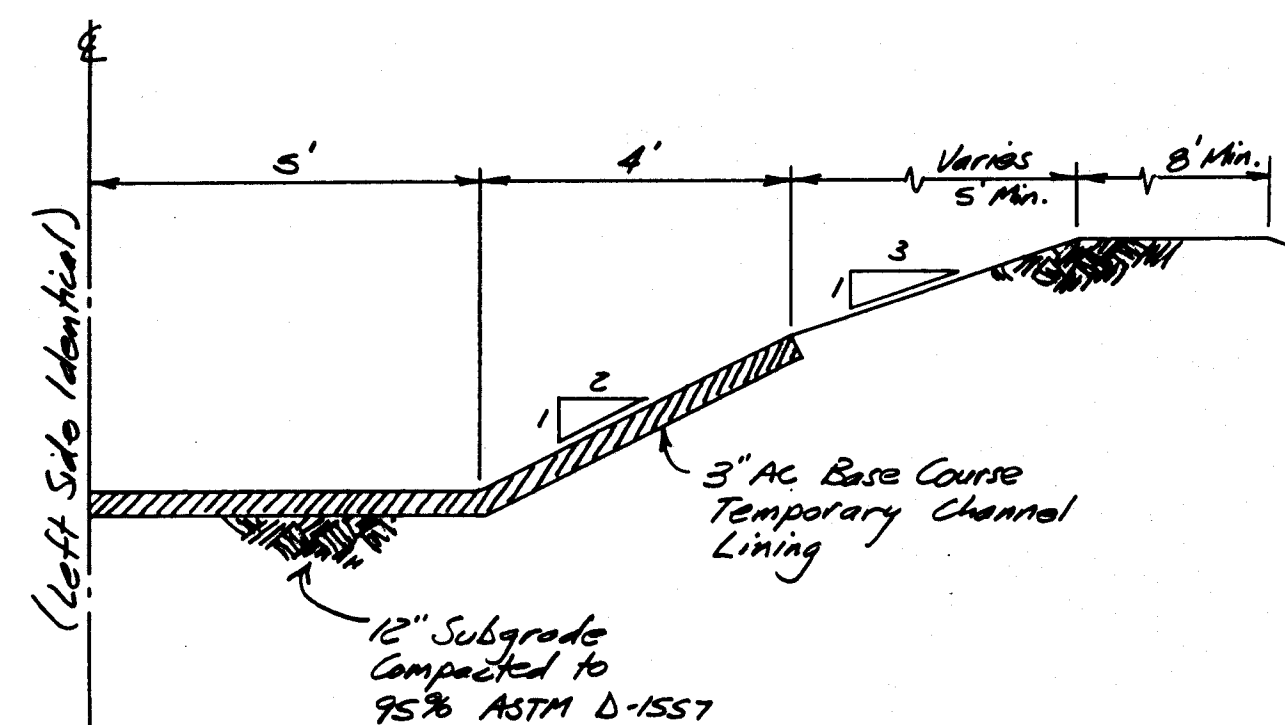
FENCE POST MOUNTING DETAIL
NTS



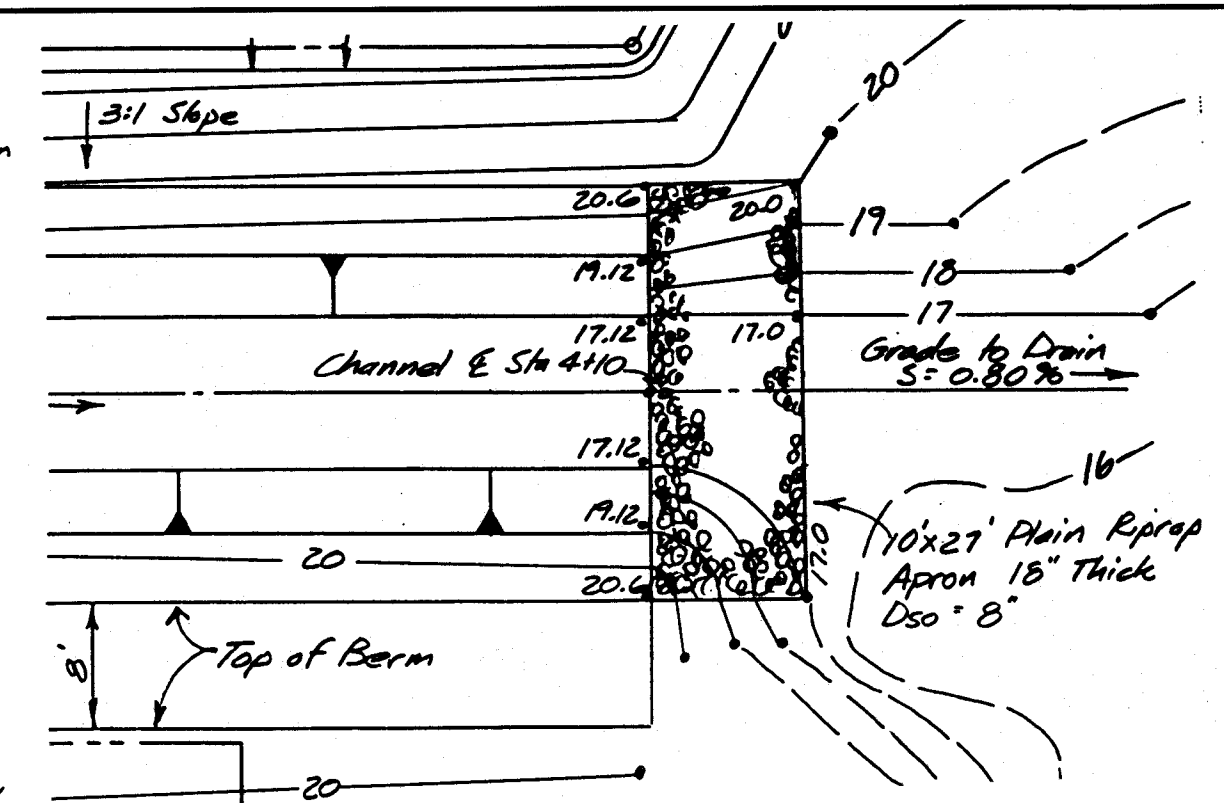
SECTION C
NTS



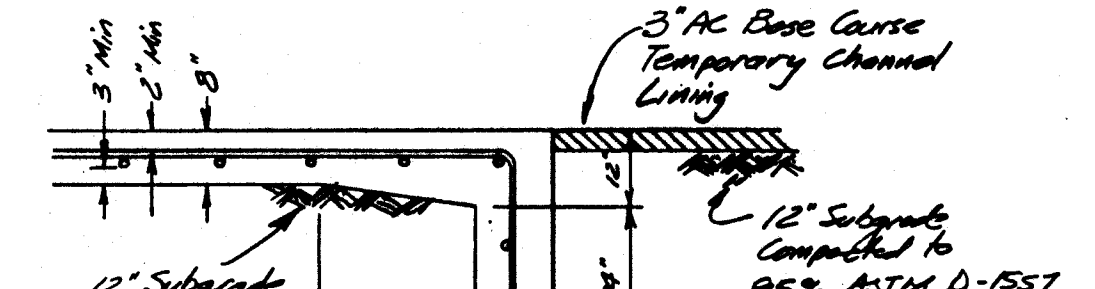
SECTION B
NTS



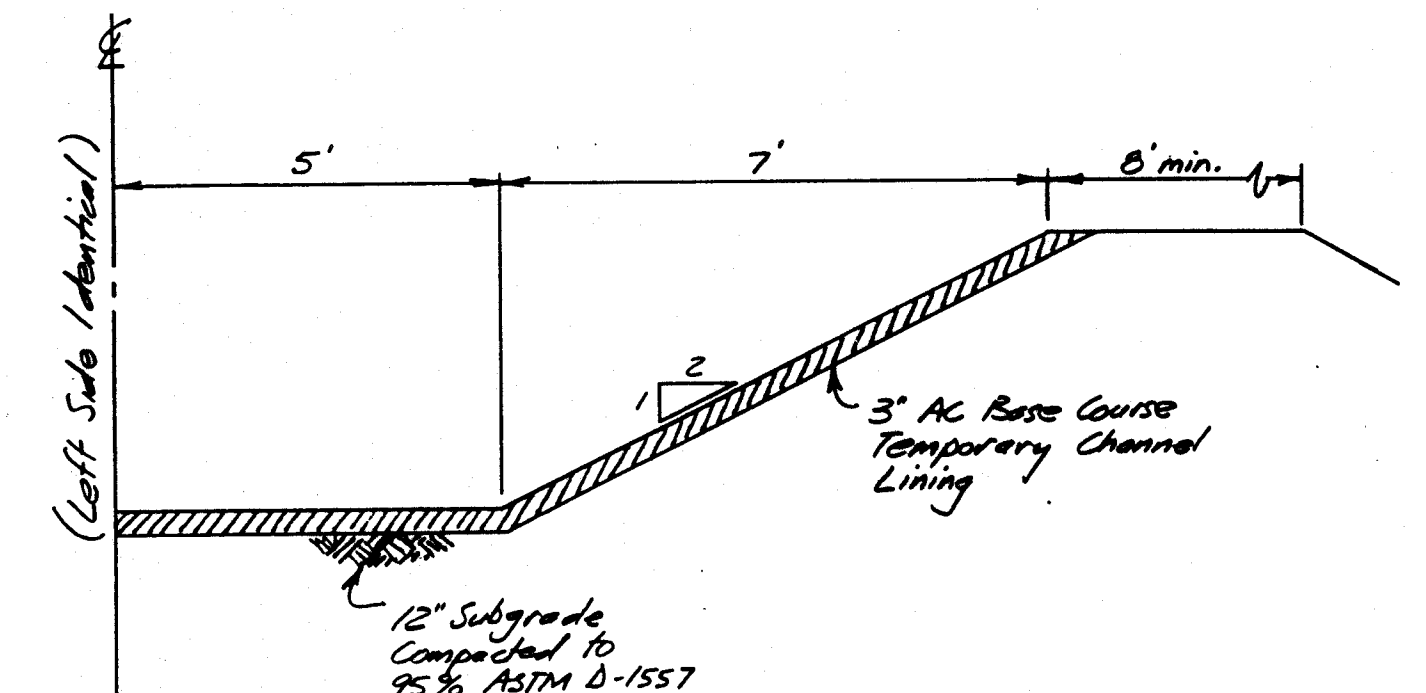
SECTION A
NTS



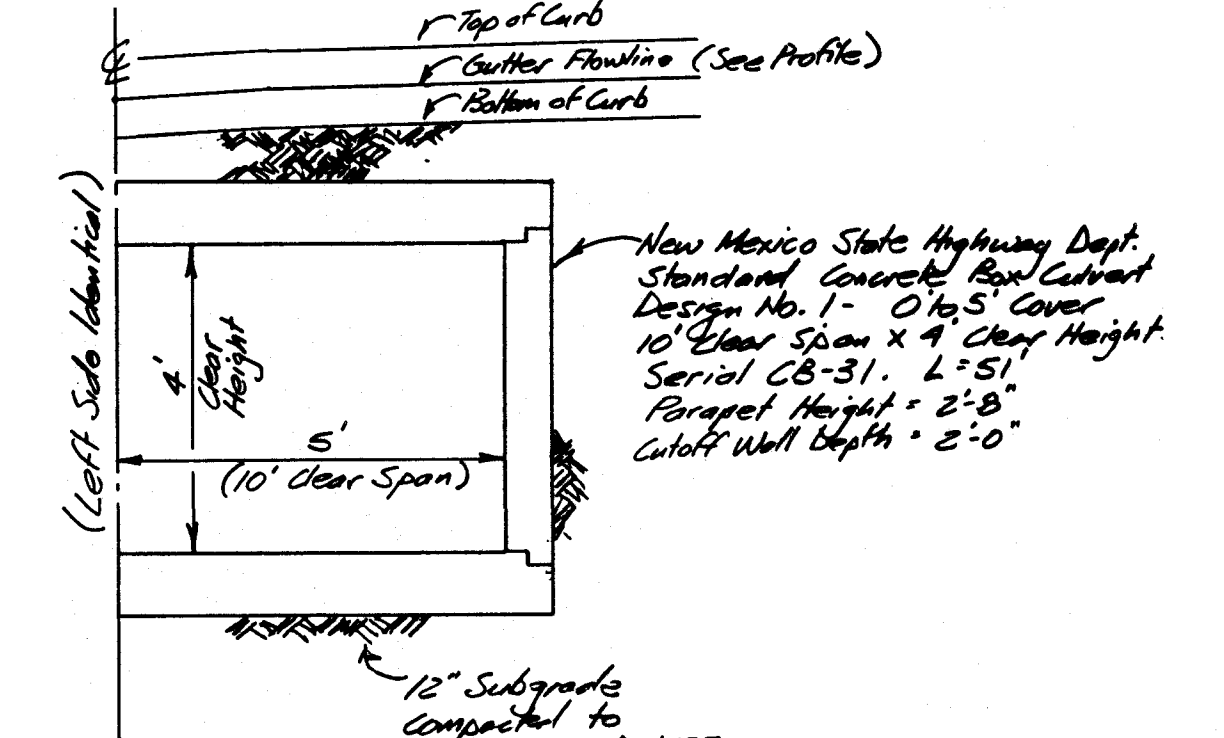
RIPRAP APRON DETAIL
CHANNEL OUTFALL STA. 4+10
NTS



SECTION G
NTS



SECTION F
NTS



SECTION E
NTS

NO.		REVISIONS		BY DATE	
<p>OCTOPUS CAR WASH 7 BAR RANCH, TRACT C-3-B CHANNEL & CROSSING STRUCTURE PLAN, PROFILE & DETAILS</p>					
<p>EASTERLING & ASSOCIATES, INC. CONSULTING ENGINEERS 10131 Coors Rd., NW, Suite H-718 ALBUQUERQUE, NEW MEXICO 87114 (505) 898-8021 FAX (505) 898-8501</p>					
DESIGNED BY: RPB		DRAWN BY: DEC		CHECKED BY: RPB	
JOB NO.: 4709.90		DATE: 7-93		SHEET 3 OF 3	

SCANNED BY
BY LASON

SCANNED BY
BY LASON