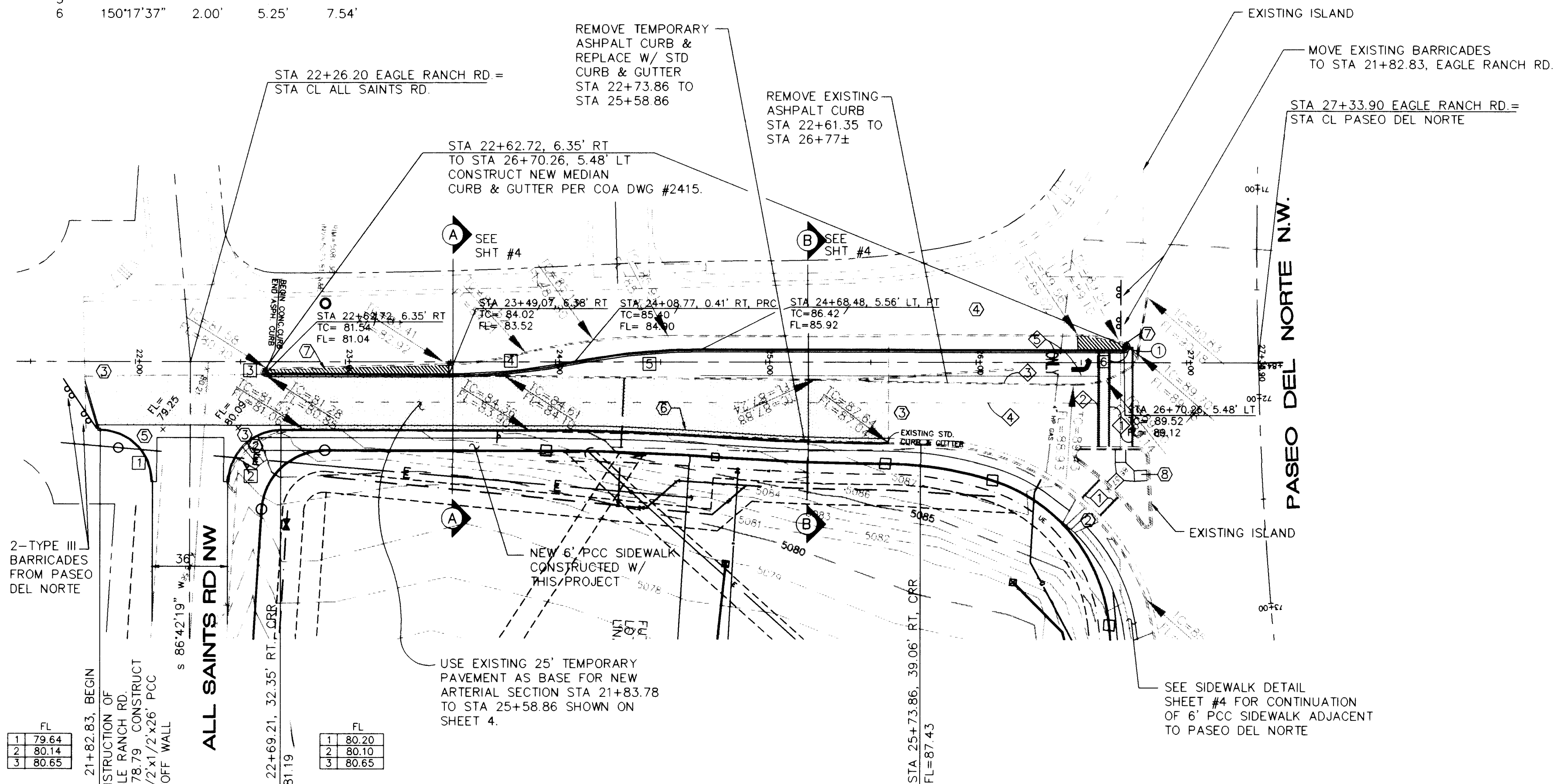


ALBUQUERQUE, NEW MEXICO

[illegible]

FACE OF CURB CURVE TABLE

CURVE	DELTA	RADIUS	LENGTH	TAN
1	90°51'28"	25.00'	39.64'	25.38'
2	90°01'29"	25.00'	39.28'	25.01'
3	177°09'06"	1.26'	3.90'	50.68'
4	11°28'42"	300.00'	60.10'	30.15'
5				
6	150°17'37"	2.00'	5.25'	7.54'



EAGLE RANCH ROAD

SCALES:
1"=40' HOR.
1"=10' VERT.

KEYED CONSTRUCTION NOTES

- CONSTRUCT 6' WIDE VALLEY GUTTER PER COA STD DWG #2420.
- CONSTRUCT HANDICAP RAMPS PER COA STD DWG #2441.
- ADJUST PROFILE OVER 10' TO MATCH EXISTING FL GRADES BEGINNING AND END OF CONSTRUCTION. CONTRACTOR SHALL PROVIDE SMOOTH RIDING TRANSITION BETWEEN NEW & EXISTING PAVEMENT.
- ALL TRAFFIC SHALL BE ROUTED THRU EXISTING SOUTH-BOUND LANES DURING CONSTRUCTION.
- CONTINUOUS VEHICULAR ACCESS SHALL BE PROVIDED TO ALL SAINTS ROAD DURING CONSTRUCTION.
- CONTRACTOR SHALL PROVIDE ASPHALTIC OVERLAY TO TRANSITION EXISTING PAVEMENT INTO NEW VALLEY GUTTER (25' MIN. TRANSITION).
- TOE OF NEW GUTTER SHALL BE 1 1/2" ABOVE EXISTING PAVEMENT (SEE SECTION A-A SHEET #4).
- PAVE MEDIAN ACCORDING TO COA STD DWG #2408 FROM STA 22+61.36 TO STA 23+49.09 AND FROM STA 26+48.20 TO STA 26+70.23 W/ PATTERNED CONCRETE.
- CONSTRUCT P.C.C. RAMPS (5' WIDE) AND LANDING AS INDICATED. INTERSECTION LANDING SHALL BE RAISED 0.33' FROM FLOWLINE GRADES OF EACH RAMP.

KEYED NOTES

- TRAFFIC OPERATIONS (PHONE: 291-6220) SHALL BE CONTACTED TO VERIFY SUITABILITY OF EXISTING TRAFFIC SIGNAL BASE & PULL BOX LOCATIONS.

STRIPING NOTES

- STANDARD 12" WIDE WHITE PLASTIC CROSSWALK STRIPING. OFFSET OUTSIDE EDGE OF STRIPING 6'-0" FROM CENTER OF WHEELCHAIR RAMP AT ISLAND.
- 12" WIDE WHITE PLASTIC STOP BAR, 4'-0" FROM CROSSWALK STRIPE.
- 4" WIDE WHITE SOLID PLASTIC TRAFFIC STRIPING.
- 4"x4' W/ 12' SPACING WHITE PLASTIC STRIPING.
- LEFT-TURN ARROW AND LETTERS AS INDICATED PER MUTCD MANUAL.

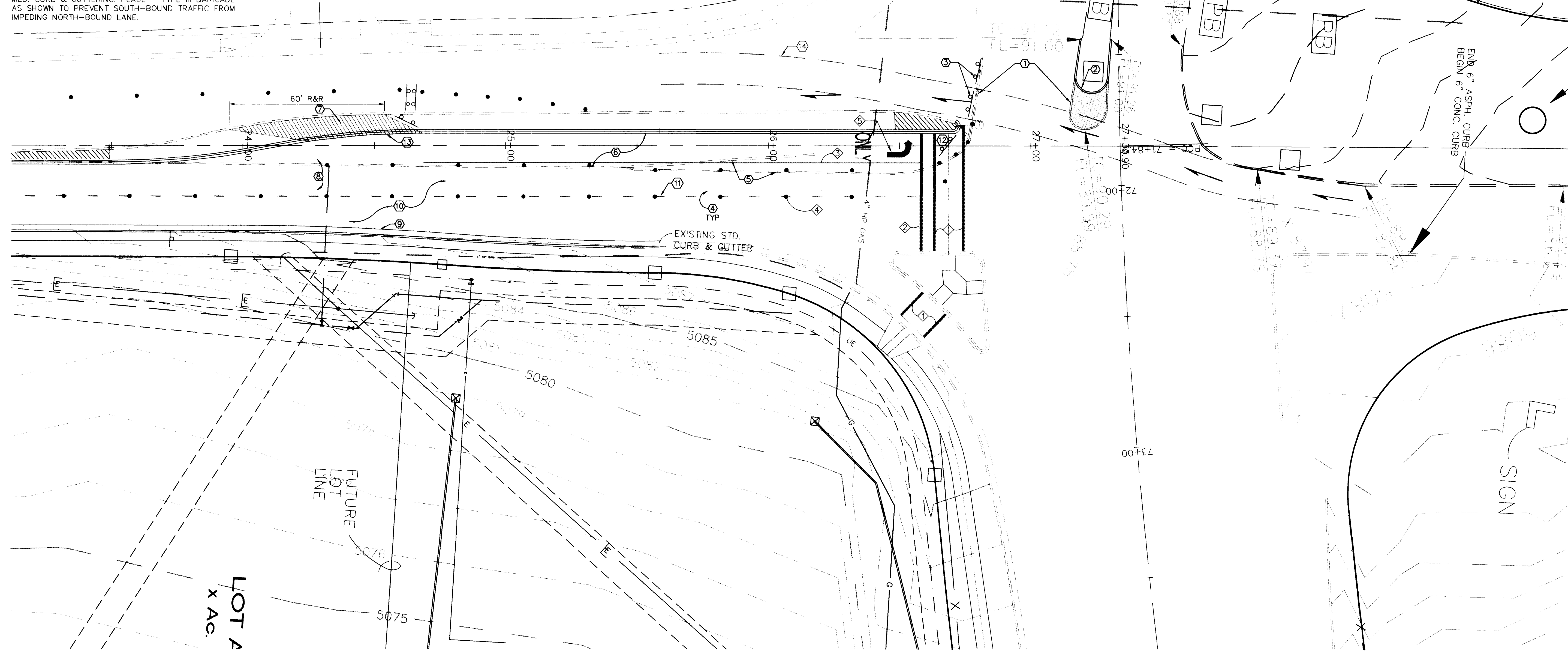
26-4775-9110296

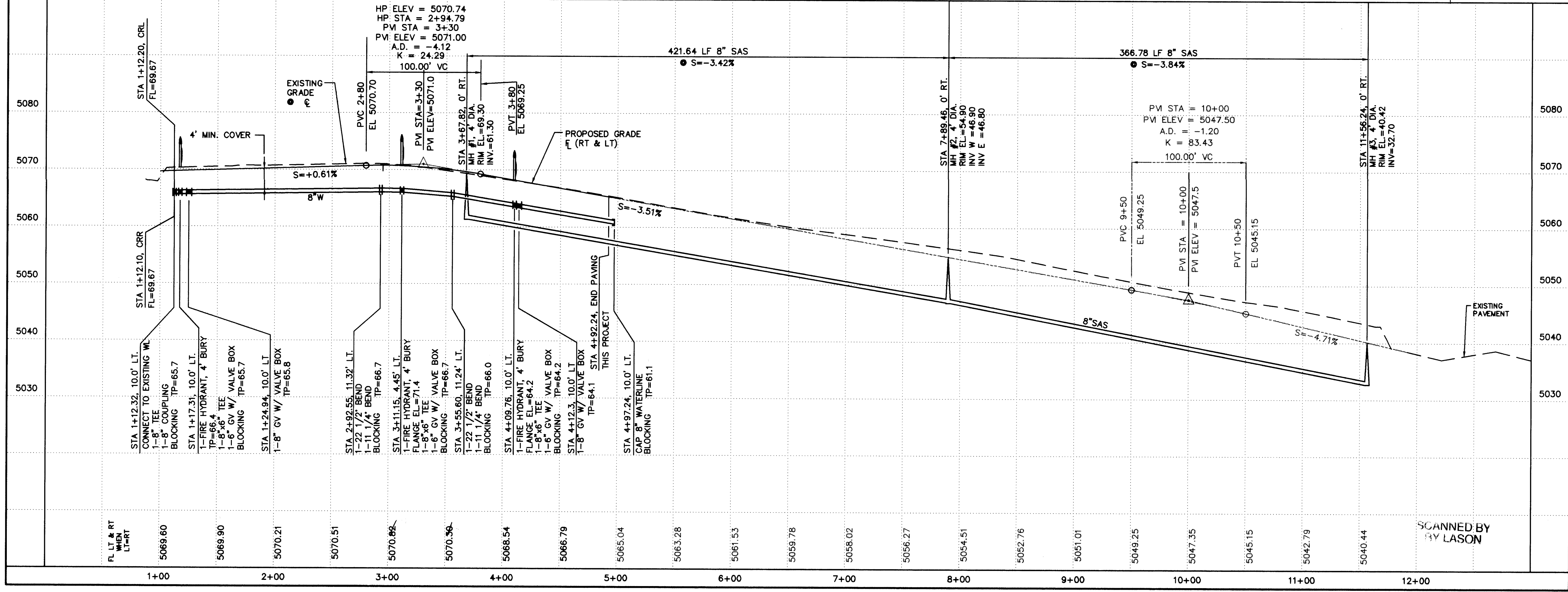
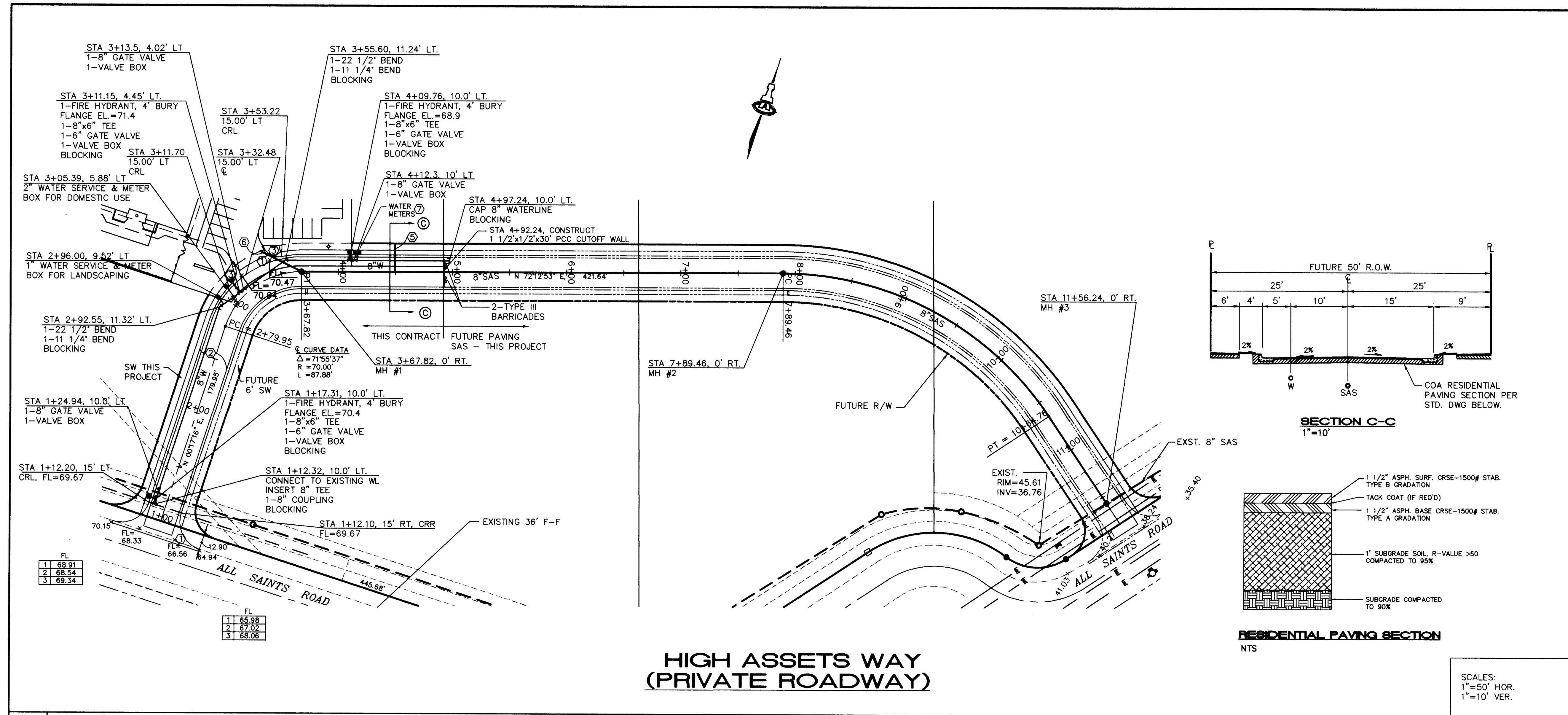
ISAACSON & ARFMAN, P.A. Consulting Engineering Associates 128 Monroe Street, N.E. Albuquerque, New Mexico 826PV1.DWG 11/10/95					
CITY OF ALBUQUERQUE PUBLIC WORKS DEPARTMENT ENGINEERING GROUP					
TITLE: ALBUQUERQUE WEST--UNIT 2 EAGLE RANCH ROAD--PAVING					
APPROVALS	ENGINEER	DATE	APPROVALS	ENGINEER	DATE
DRC CHAIRMAN	<i>[Signature]</i>	12-29-95	WATER	<i>[Signature]</i>	11-27-95
TRANSPORTATION	<i>[Signature]</i>	11-30-95	WASTE WATER	<i>[Signature]</i>	11-27-95
HYDROLOGY	<i>[Signature]</i>	11-27-95			
PROJECT NO. 4715.91 -5259.90		MAP NO. C-13		SHEET 2 OF 7	

SCANNED BY
BY LASON

DETOUR/CONSTRUCTION SEQUENCE NOTES: ○

1. REMOVE & DISPOSE TEMPORARY MEDIAN CURBING.
2. 6.5' RADIUS - NEW EXTRUDED ASPHALT CURB. OVER 5' ASPHALT / 10" GRAVEL / 95% COMP.
3. REMOVE AND STOCKPILE BARRICADES, REPOSITION AT SAME LOCATION AFTER END OF CONSTRUCTION.
4. PLACEMENT OF TRAFFIC CONTROL DEVICES. PLACE PER REQUIREMENTS FOUND ON SHT. 6 & 7.
5. REMOVE MEDIAN CURBING.
6. CONSTRUCT FULL SECTION OF LEFT TURNING LANE WITH THE EXCEPTION OF MEDIAN CURB & GUTTER STA 24+00 THROUGH 25+00.
7. REMOVE & DISPOSE OF 60' MEDIAN CURB & GUTTERING AND PLACE 2" TEMP. ASPHALT IN MEDIAN. PROVIDE FOR A SMOOTH RIDING TRANSITION. REMOVE ASPHALT AFTER N.B.L. CONSTRUCTION IS COMPLETE. REPLACE 60 LF OF MED. CURB & GUTTERING. PLACE 1-TYPE III BARRICADE AS SHOWN TO PREVENT SOUTH-BOUND TRAFFIC FROM IMPEDING NORTH-BOUND LANE.
8. MOVE TRAFFIC CONTROL DEVICES 12' WEST, OUT OF OVERLAY ZONE.
9. REMOVE AND DISPOSE ASPHALT CURBING AND BASE COURSE ASPHALT AS NECESSARY TO CONSTRUCT P.C.C. STD. CURB & GUTTERING.
10. OVERLAY SURFACE COURSE ASPHALT PER PAVING SECTION.
11. STRIPE FOR TWO-WAY TRAFFIC.
12. PLACE 1-TYPE III BARRICADE AS SHOWN.
13. CONSTRUCT 60 LF MEDIAN CURB & GUTTER.
14. TEMPORARY STRIPING TAPE (WHITE).
14. CLOSE DOWN FUTURE SOUTH-BOUND LANE (SEE NOTE 2).





KEYED CONSTRUCTION NOTES

- CONSTRUCT PCC VALLEY GUTTER 6" WIDE, 3/4" INVERT PER COA STD DWG #2420.
- STD CURB & GUTTER PER COA STD DWG #2415.
- CONSTRUCT HANDICAP RAMPS PER COA STD DWG #2441, TYPE II.
- STA 4+16.68, 2-3/4" WATER SERVICES.
- STA 4+49.55, 4" SANITARY SEWER SERVICE. 4' BURY @ P.
- 6" SANITARY SEWER SERVICE @ MANHOLE. FIELD ALIGN. 4' BURY @ P.

AS-BUILT INFORMATION

CONTRACTOR	DATE	BY	DATE	BY	DATE	BY	DATE	BY

BENCH MARKS

STATION IS A STANDARD CORPUS OF ENGINEERS METAL TABLE SET IN A CONCRETE POST 75" ABOVE THE GROUND. STAMPED "ALAMEDA B NO. 2" ALBUQUERQUE STATION IS 4 MI. SW FROM THE INTERSECTION OF PARADISE BLVD. AND COORS. X=373,513.20, Y=1,520,142.81, Z=5058.25

SURVEY INFORMATION

FIELD NOTES	DATE	BY

ENGINEER'S SEAL

ISAACSON & ARFMAN, P.A.
Consulting Engineering Associates
128 Monroe Street N.E.
Albuquerque New Mexico

828PV2.DWGAWW 11/10/95

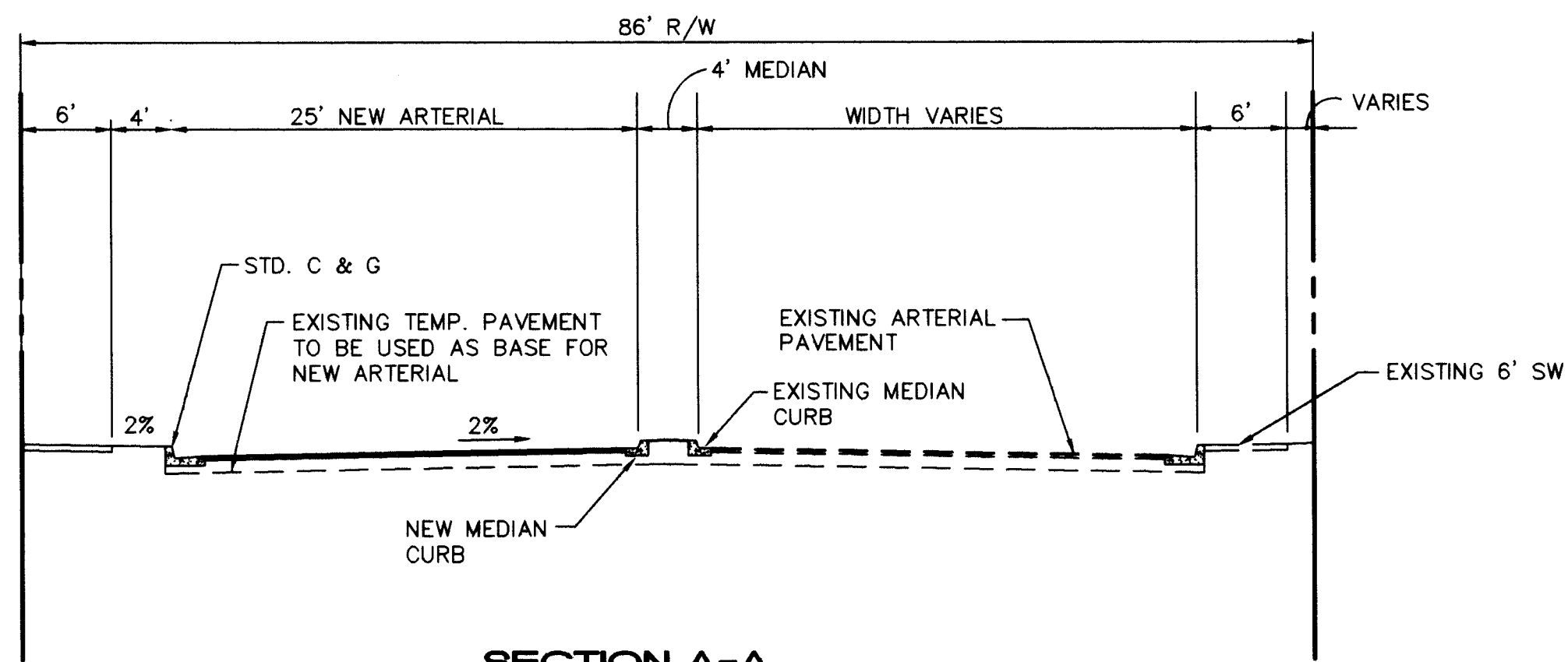
TITLE: ALBUQUERQUE WEST--UNIT 2
HIGH ASSETS WAY - PAVING & UTILITIES

APPROVALS	ENGINEER	DATE	APPROVALS	ENGINEER	DATE
DRC CHAIRMAN		12-29-95	WATER	R.W. Kane	11-27-95
TRANSPORTATION		11-20-95	WASTE WATER	R.W. Kane	11-27-95
HYDROLOGY		11-27-95	NMUI		

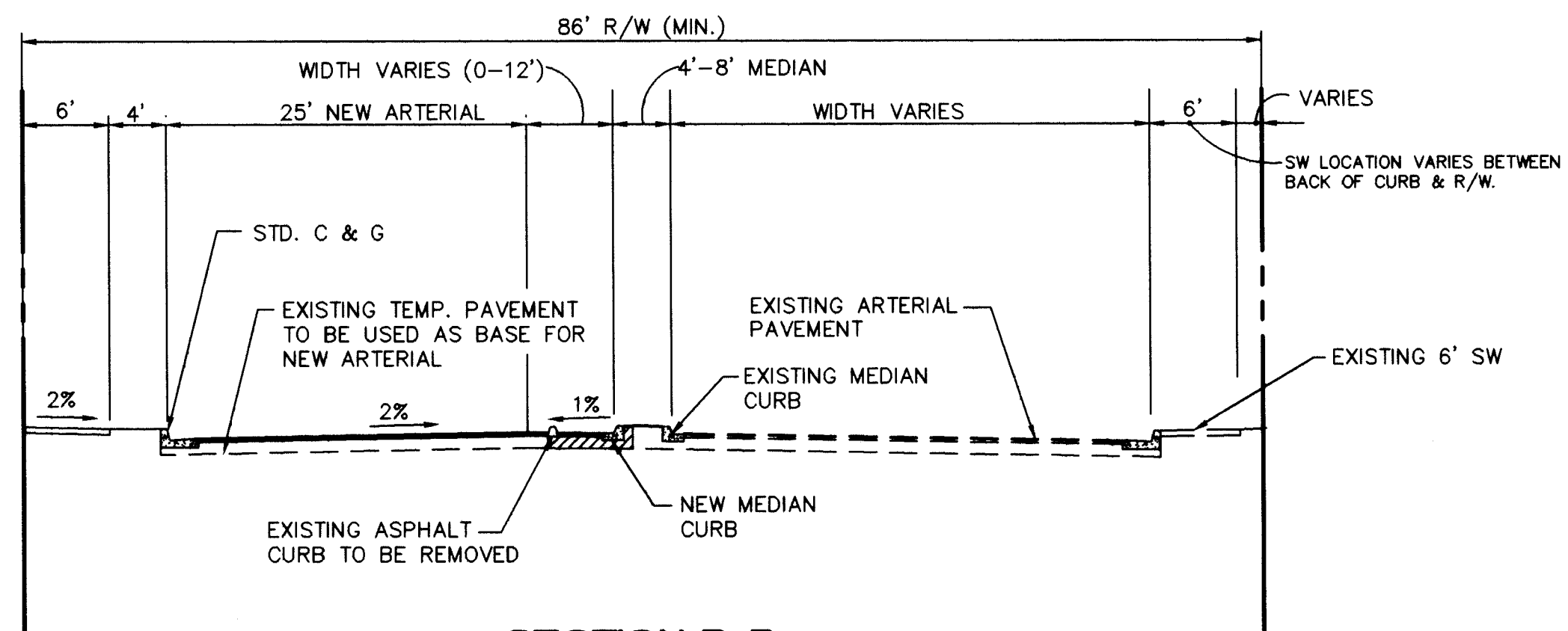
PROJECT NO. 4715.91
5259.90

MAP NO. C-13

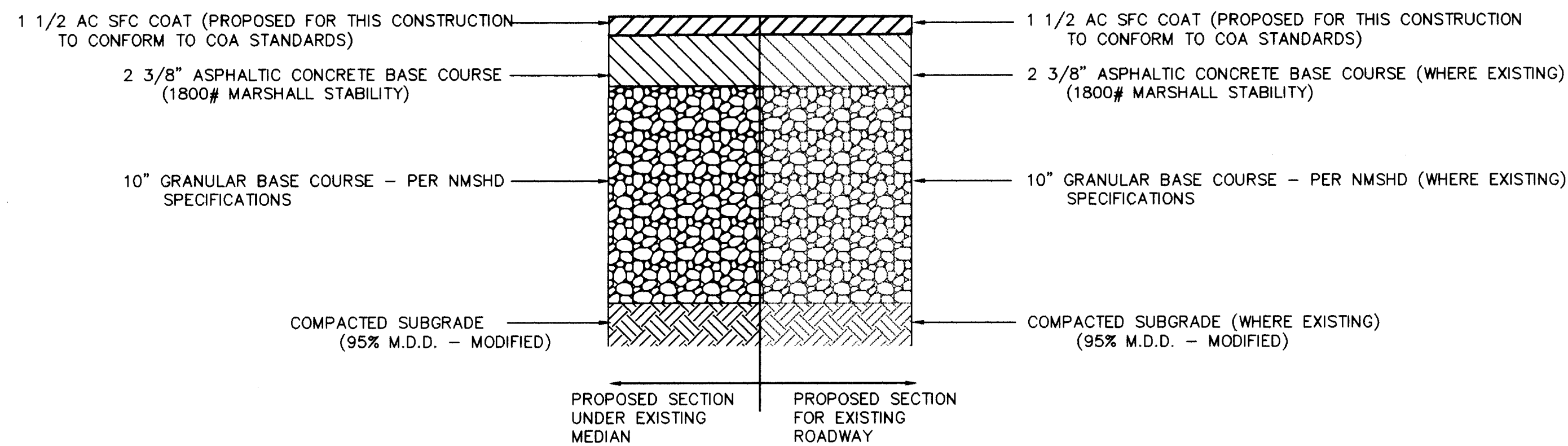
SHEET 4 OF 7



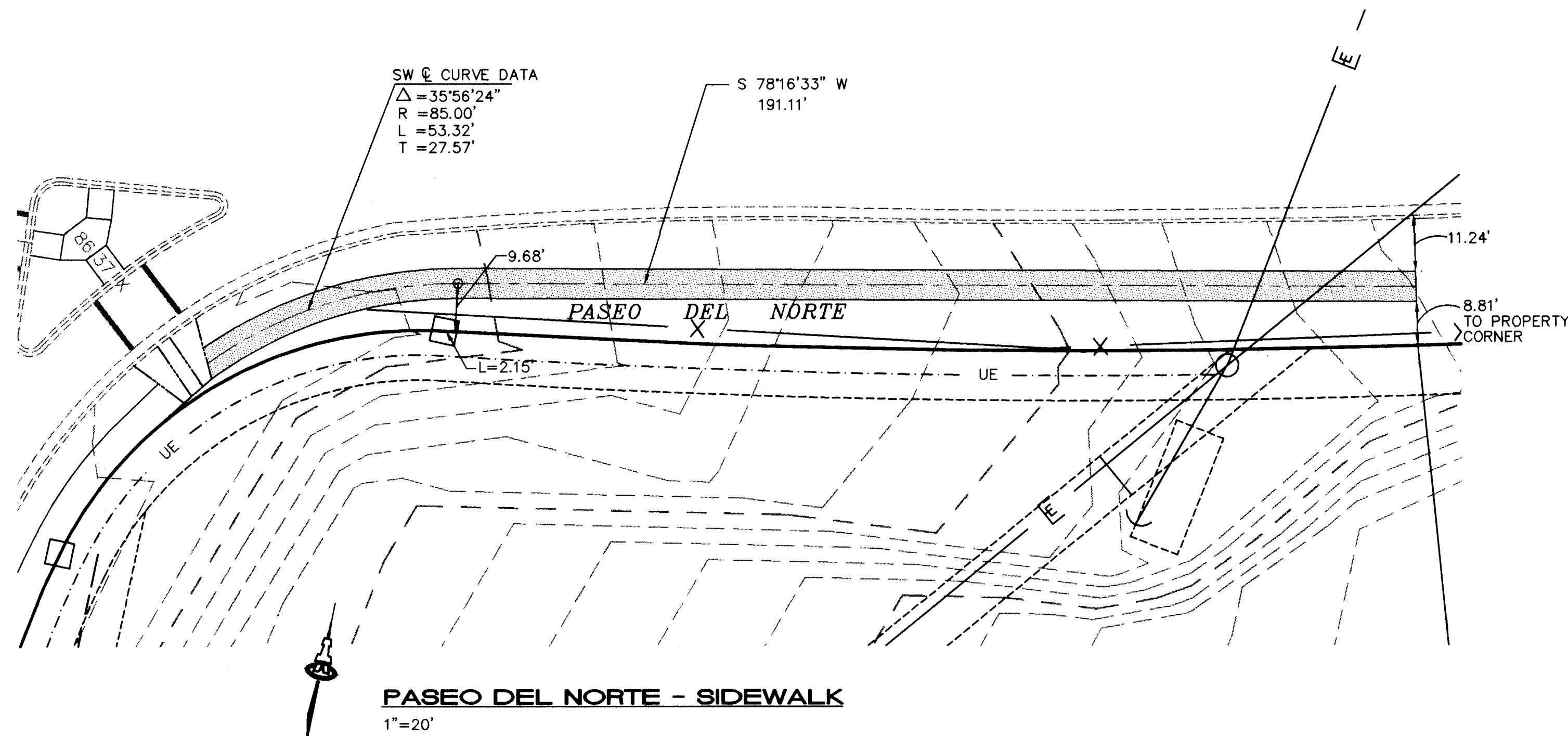
SECTION A-A
STA 22+61.36 TO STA 23+49.09
1"=10'



SECTION B-B
STA 23+49.09 TO STA 26+70.23
1"=10'



PAVEMENT SECTION EAGLE RANCH RD
NTS



NOTE:
SW & CURVE DATA IS TO BE USED FOR THE SIDEWALK LAYOUT.

26-9715-911 0596

ISAACSON & ARFMAN, P.A.
Consulting Engineering Associates
128 Monroe Street N.E.
Albuquerque, New Mexico

CITY OF ALBUQUERQUE
PUBLIC WORKS DEPARTMENT
ENGINEERING GROUP

TITLE: **ALBUQUERQUE WEST--UNIT 2**

DETAILS

APPROVALS	ENGINEER	DATE	APPROVALS	ENGINEER	DATE
DRC CHAIRMAN	<i>[Signature]</i>	11-29-95	WATER	<i>[Signature]</i>	11-29-95
TRANSPORTATION	<i>[Signature]</i>	11-29-95	WASTE WATER	<i>[Signature]</i>	11-29-95
HYDROLOGY	<i>[Signature]</i>	11-29-95	REVISIONS	<i>[Signature]</i>	11-29-95

PROJECT NO. **4715.9** MAP NO. **C-13** SHEET **5** OF **7**
NO. **5259.90**

SCANNED BY
BY LASON

CITY OF ALBUQUERQUE PUBLIC WORKS DEPARTMENT ENGINEERING GROUP					
TITLE: ALBUQUERQUE WEST UNIT 2					
SIGNING AND CONSTRUCTION TRAFFIC CONTROL STANDARDS					
APPROVALS	ENGINEER	DATE	APPROVALS	ENGINEER	DATE
DRC CHAIRMAN	<i>29 [Signature]</i>	<i>12-29-95</i>	WATER	<i>N/A RWE</i>	<i>11-27-95</i>
TRANSPORTATION	<i>11 [Signature]</i>	<i>11-28-95</i>	WASTE WATER	<i>N/A RWE</i>	<i>11-27-95</i>
HYDROLOGY	<i>N/A [Signature]</i>	<i>11-27-95</i>	<i>Russell [Signature]</i>	<i>[Signature]</i>	<i>11/24/95</i>
PROJECT 4715.91 NO. 5259.90			MAP NO. C-13		SHEET 7 OF 7