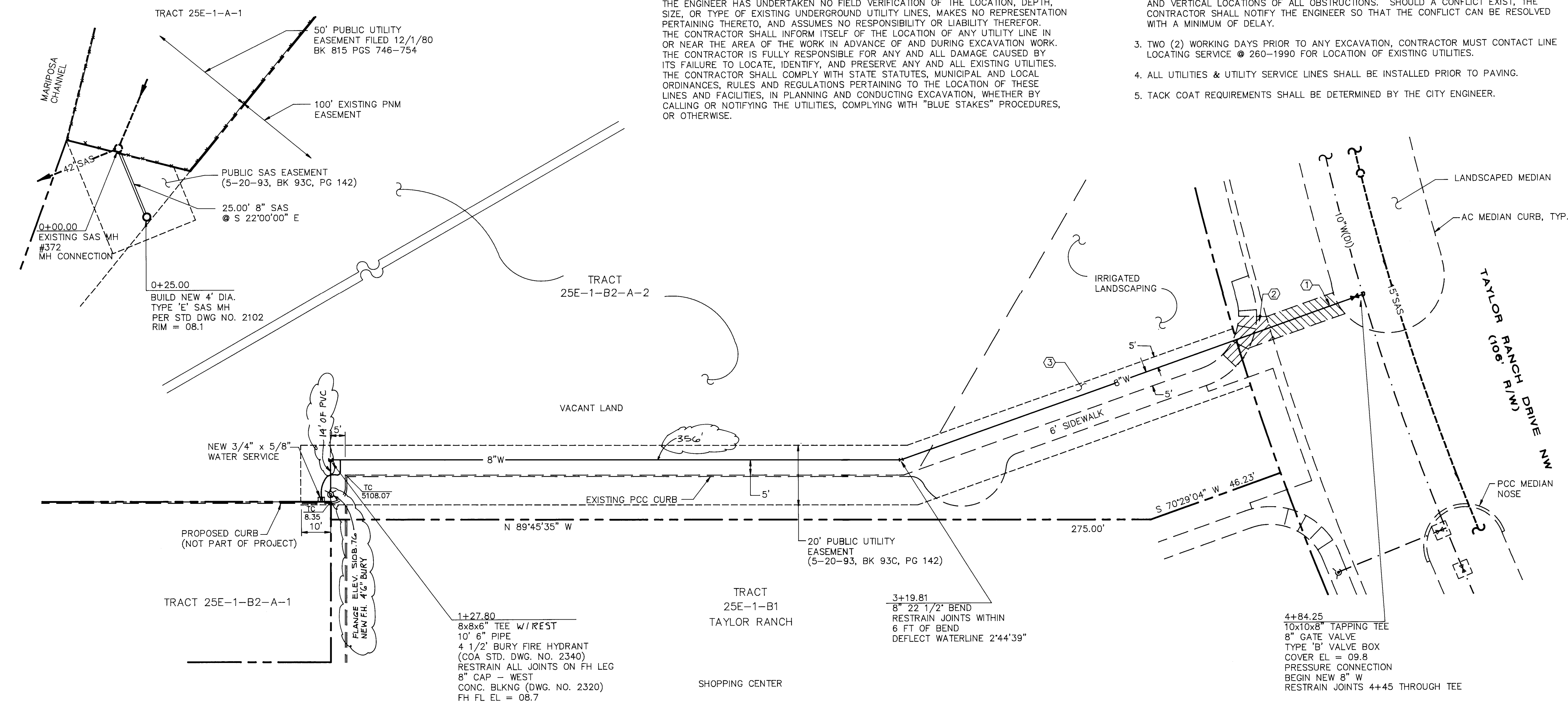


WARNING--EXISTING UTILITY LINE LOCATIONS ARE SHOWN IN AN APPROXIMATE MANNER ONLY, AND SUCH LINES MAY EXIST WHERE NONE ARE SHOWN. THE LOCATION OF ANY SUCH EXISTING LINES IS BASED UPON INFORMATION PROVIDED BY THE UTILITY COMPANY, THE OWNER, OR BY OTHERS, AND THE INFORMATION MAY BE INCOMPLETE OR MAY BE OBSOLETE BY THE TIME CONSTRUCTION COMMENCES.

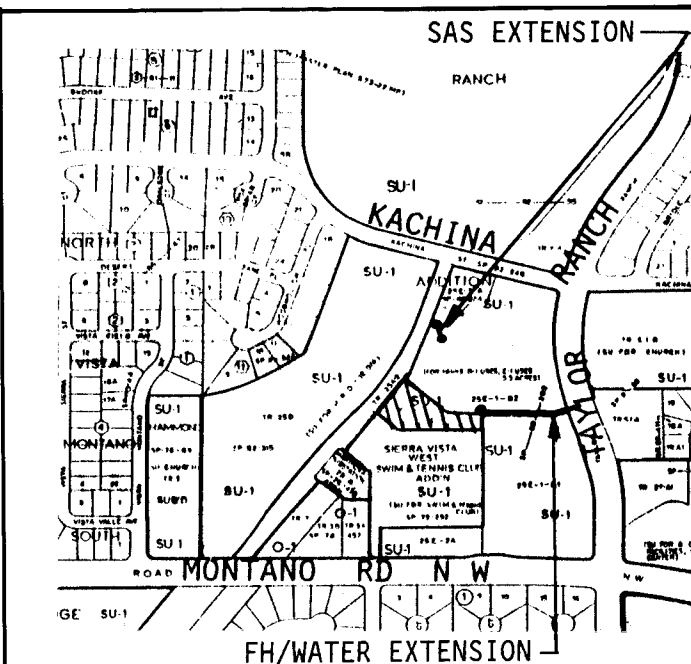
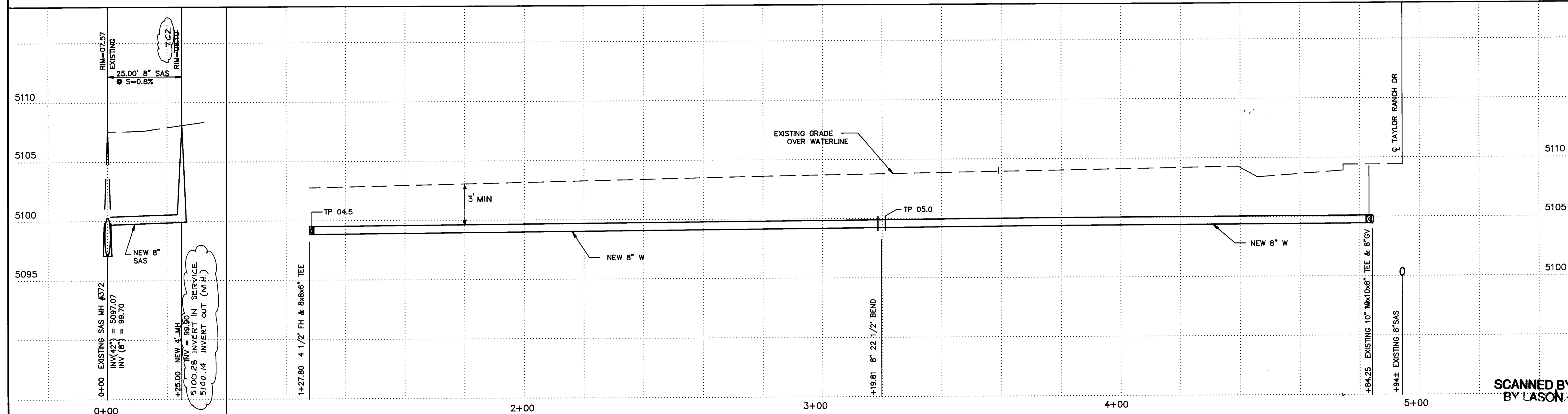
GENERAL NOTES

1. ALL WORK DETAILED ON THESE PLANS TO BE PERFORMED UNDER CONTRACT SHALL, EXCEPT AS OTHERWISE STATED OR PROVIDED FOR HEREON, BE CONSTRUCTED IN ACCORDANCE WITH THE CITY OF ALBUQUERQUE STANDARD SPECIFICATIONS FOR PUBLIC WORKS CONSTRUCTION. (1986 EDITION WITH UPDATE #4)
2. PRIOR TO CONSTRUCTION, THE CONTRACTOR SHALL EXCAVATE & VERIFY THE HORIZONTAL AND VERTICAL LOCATIONS OF ALL OBSTRUCTIONS. SHOULD A CONFLICT EXIST, THE CONTRACTOR SHALL NOTIFY THE ENGINEER SO THAT THE CONFLICT CAN BE RESOLVED WITH A MINIMUM OF DELAY.
3. TWO (2) WORKING DAYS PRIOR TO ANY EXCAVATION, CONTRACTOR MUST CONTACT LINE LOCATING SERVICE @ 260-1990 FOR LOCATION OF EXISTING UTILITIES.
4. ALL UTILITIES & UTILITY SERVICE LINES SHALL BE INSTALLED PRIOR TO PAVING.
5. TACK COAT REQUIREMENTS SHALL BE DETERMINED BY THE CITY ENGINEER.



SAS EXTENSION

WATER AND FIRE LINE EXTENSION



VICINITY MAP

CONSTRUCTION NOTES

1. REMOVE & REPLACE 23 SY ARTERIAL PAVEMENT PER COA STD. DWG. NO. 2465. REMOVE & REPLACE 9 LF AC MEDIAN CURB PER STD. DWG. NO. 2415.
2. REMOVE & REPLACE 11 LF VALLEY GUTTER PER STD. DWG. NO. 2420 & 1 SY SIDEWALK PER STD. DWG. NO. 2441.
3. REMOVE & REPLACE PRIVATE LANDSCAPING, SPRINKLERS, & IRRIGATION LINE AS NEEDED.

TRAFFIC CONTROL

THREE (3) WORKING DAYS PRIOR TO BEGINNING CONSTRUCTION, THE CONTRACTOR SHALL SUBMIT TO THE CONSTRUCTION COORDINATION DIVISION A DETAILED CONSTRUCTION SCHEDULE. TWO (2) WORKING DAYS PRIOR TO CONSTRUCTION, THE CONTRACTOR SHALL OBTAIN A BARRICADING PERMIT FROM THE CONSTRUCTION COORDINATION DIVISION. CONTRACTOR SHALL NOTIFY BARRICADE ENGINEER (768-2551) PRIOR TO OCCUPYING AN INTERSECTION. SEE SECTION 19 OF THE SPECIFICATIONS.


ALL STREET STRIPING ALTERED OR DESTROYED SHALL BE REPLACED IN KIND BY CONTRACTOR TO LOCATION AND IN KIND AS EXISTING OR AS INDICATED BY THIS PLAN SET. THIS STRIPING REPLACEMENT SHALL BE CONSIDERED INCIDENTAL TO WATERLINE CONSTRUCTION.

[illegible]

APPROVAL OF CHIEF CONSTRUCTION ENGINEER
Kenneth B. Smith
 DATE 5-18-94

**APPROVED FOR
CONSTRUCTION**
Richard L. Feld 11/23/93
CITY ENGINEER DAY

752WTR.DWG 6/17/93



ISAACSON & ARFMAN, P.A.
Consulting Engineering Associates
 128 Monroe Street N.E.
 Albuquerque New Mexico

CITY OF ALBUQUERQUE
PUBLIC WORKS DEPARTMENT
ENGINEERING GROUP

TITLE: TAYLOR RANCH TR. 25E-1-B2-A-1
WATER & SANITARY SEWER EXTENSIONS

APPROVALS	ENGINEER	DATE	APPROVALS	ENGINEER	DATE
DRC CHAIRMAN	<i>B.G. Lockley</i>	7-2-93	WATER	<i>R.W. Kane</i>	6-25-93
TRANSPORTATION	<i>R. Kane</i>	6-25-93	WASTE WATER	<i>R.W. Kane</i>	6-25-93
HYDROLOGY	<i>R. Kane</i>	6-25-93			

PROJECT NO.	4717.90	MAP NO.	E-11	SHEET	1	OF	
-------------	----------------	---------	-------------	-------	----------	----	--