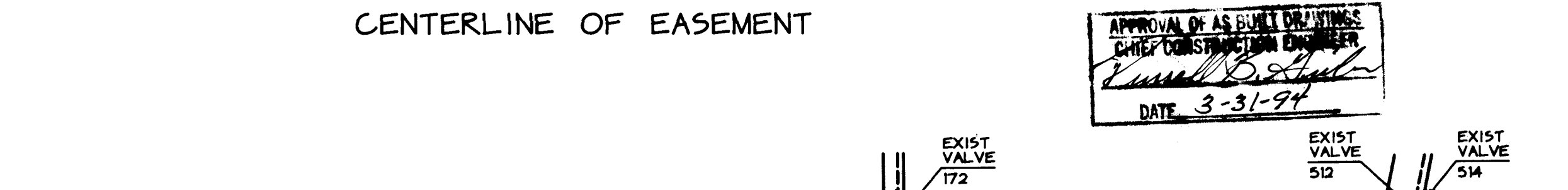
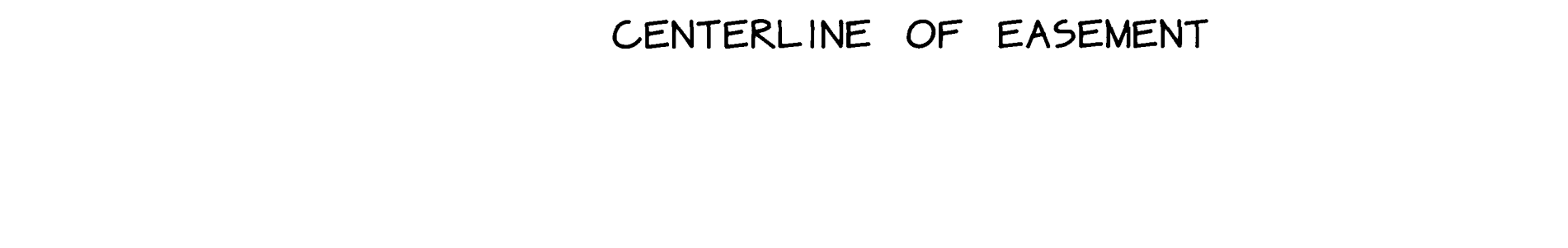


NOMINAL PIPE SIZE	EDDA IRON SERIES NUMBER	RATED PRESSURE 211
4	1104	350
6	1106	350
8	1110	350
10	1112	350
12	1114	350



NOTICE TO CONTRACTOR

1. ALL WORK DETAILED ON THESE PLANS TO BE PERFORMED UNDER CONTRACT SHALL, EXCEPT AS OTHERWISE STATED OR PROVIDED FOR HEREON, BE CONSTRUCTED IN ACCORDANCE WITH THE CITY OF ALBUQUERQUE STANDARD SPECIFICATIONS FOR PUBLIC WORKS CONSTRUCTION 1966 EDITION WITH UPDATES.

2. TWO (2) WORKING DAYS PRIOR TO ANY EXCAVATION, CONTRACTOR MUST CONTACT LINE LOCATING SERVICE, 250-PPD, FOR LOCATION OF EXISTING UTILITIES.

3. PRIOR TO CONSTRUCTION, THE CONTRACTOR SHALL EXCAVATE AND VERIFY THE HORIZONTAL AND VERTICAL LOCATIONS OF ALL OBSTRUCTIONS, SHOULD A CONFLICT EXIST, THE CONTRACTOR SHALL NOTIFY THE ENGINEER OR SURVEYOR SO THAT THE CONFLICT CAN BE RESOLVED WITH MINIMUM AMOUNT OF DELAY.

4. TWO (2) WORKING DAYS PRIOR TO CONSTRUCTION, CONTRACTOR SHALL OBTAIN A BARRICADING PLAN AND PERMIT THROUGH TRAFFIC ENGINEER DIVISION AT 768-2551.

THE FOLLOWING NOTES ALSO APPLY WHEN CHECKED

☐ ALL UTILITIES AND UTILITY SERVICE LINES SHALL BE INSTALLED PRIOR TO PAVING.

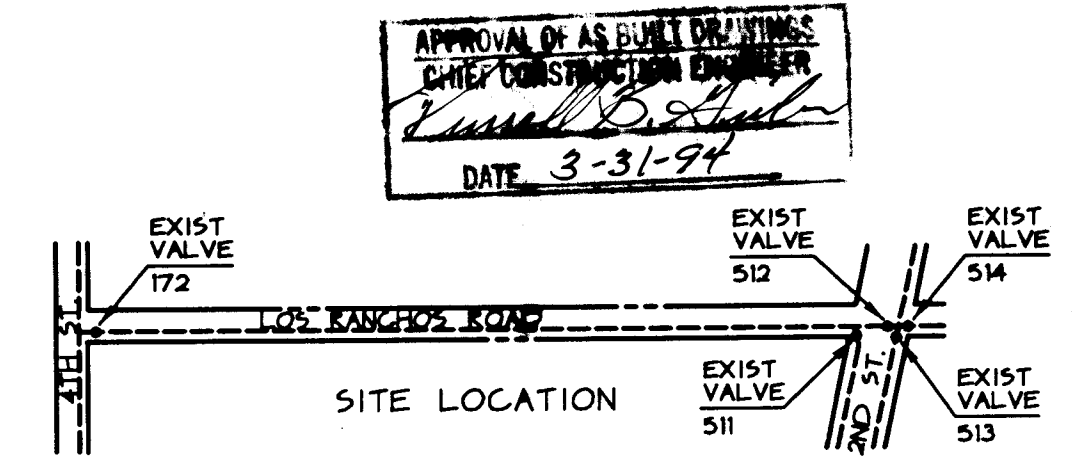
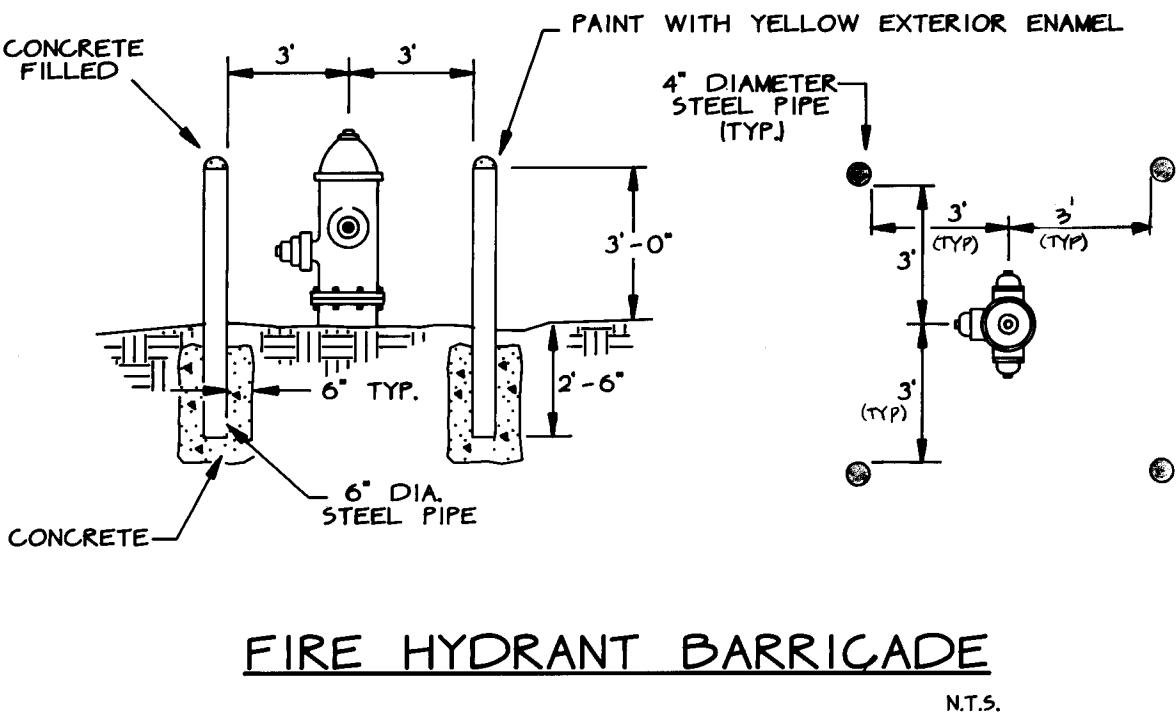
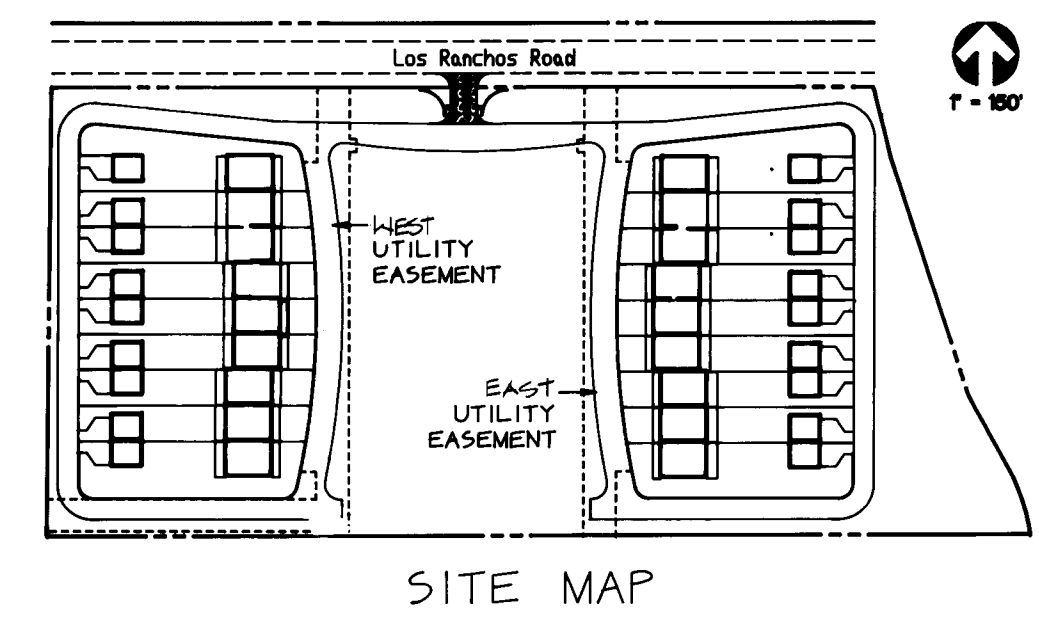
☐ BACKFILL COMPACTION SHALL BE ACCORDING TO SPECIFIED STREET USE.

☐ TACK COAT REQUIREMENTS SHALL BE DETERMINED BY THE CITY ENGINEER.

☐ SIDEWALKS AND WHEELCHAIR RAMPS WITHIN THE CURB RETURNS SHALL BE CONSTRUCTED WHATEVER A NEW CURB RETURN IS CONSTRUCTED.

☐ IF CURB IS DEEPRESSED FOR A DRIVEPAD OR A HANDICAP RAMP, THE DRIVEPAD OR RAMP SHALL BE CONSTRUCTED PRIOR TO ACCEPTANCE OF THE CURB AND GUTTER.

☐ ALL STORM DRAINAGE FACILITIES SHALL BE COMPLETED PRIOR TO FINAL ACCEPTANCE.



1. CONTRACTOR IS RESPONSIBLE FOR COORDINATING SHUTOFF PLAN WITH C.O.A. WATER SYSTEMS DIVISION (857-5000) AT LEAST THREE (3) WORKING DAYS BEFORE ANY WORK IS DONE ON PUBLIC WATER LINES. ONLY WATER SYSTEMS DIVISION WILL PERFORM THE SHUTOFF PLAN.

2. SHUT OFF VALVES 172, 511 AND 512 PRIOR TO MAKING NEW 6" CONNECTIONS TO THE EXISTING 6" WATER MAIN LOCATED ON THE SOUTH SIDE OF LOS RANCHOS ROAD.

VALVE SHUTOFF PLAN
COA WATER DISTRIBUTION MAP D-15N

1 2 3 4 5 6 7 8 9 10 11 12 13
26 17 26 19 0 1 9 14

APPROVED FOR CONSTRUCTION
CITY ENGINEER
DATE

WATER LINE NOTES

- STATIONING BASELINE FOR NEW WATER MAINS SHALL BE AS SHOWN ON PLAN.
- REFER TO THE FOLLOWING CITY OF ALBUQ. STANDARD DRAWINGS:
 - 2301 - WATERLINE CONNECTION DETAILS
 - 2315 - PIPE TRENCH TERMINOLOGY
 - 2320 - CONCRETE BLOCKING DESIGN
 - 2326 - VALVE BOX TYPE 'B'
 - 2333 - WATER VALVE ANCHORAGE
 - 2340 - FIRE HYDRANT INSTALLATION
 - 2360 - WATER METER BOX INSTALLATION
 - 2361 - WATER METER INSTALLATION
 - 2362 - SERVICE LINE INSTALLATION
 - 2366 - DOUBLE METER BOX
- INSTALL E.M.D. AT ALL BENDS AND TEES ON WATER LINE.
- ALL VALVES SHALL BE RESILIENT SEAT TYPE.
- APPROVED WATER LINE MATERIAL: C900, PVC, DI OR APPROVED EQUAL.
- PLACE CONCRETE BLOCKING AT ALL (APPS) ALL OTHER JOINTS TO BE RESTRAINED.
- 3"X3"X4" CONCRETE PAD TO BE POURED AROUND HYDRANT.

SEWER MAIN NOTES

- STATIONING OF MANHOLES AND SEWER MAIN SHALL BE AS SHOWN ON PLAN.
- REFER TO THE FOLLOWING CITY OF ALBUQ. STANDARD DRAWINGS:
 - 2101 - MANHOLE TYPE 'C'
 - 2125 - SEWERLINE DETAILS
 - 2140 - SEWER ENCASMENT DETAILS
- MAINTAIN MINIMUM 10' HORIZONTAL DISTANCE BETWEEN WATER AND SEWER LINES. WHEN WATER AND SEWER LINES CROSS, THE WATER LINE SHALL BE AT LEAST 18" ABOVE THE SEWER. OTHERWISE, THE SEWER SHALL BE CONCRETE ENCASED FOR 10' ON EACH SIDE OF THE WATER LINE.

TRAFFIC HANDLING NOTES

- THREE (3) WORKING DAYS PRIOR TO BEGINNING CONSTRUCTION, THE CONTRACTOR SHALL SUBMIT TO THE CONSTRUCTION CO-ORDINATION DIVISION A DETAILED CONSTRUCTION SCHEDULE. TWO (2) WORKING DAYS PRIOR TO CONSTRUCTION, THE CONTRACTOR SHALL OBTAIN A BARRICADING PERMIT FROM THE CONSTRUCTION CO-ORDINATION DIVISION. CONTRACTOR SHALL NOTIFY BARRICADE ENGINEER (768-2551) PRIOR TO OCCUPYING AN INTERSECTION. SEE SECTION 11 OF THE SPECIFICATIONS.
- ALL STREET STRIPING ALTERED OR DESTROYED SHALL BE REPLACED IN KIND BY CONTRACTOR TO LOCATION AND IN KIND AS EXISTING OR AS INDICATED BY THIS PLAN SET.
- A COMPLETE SIGNING AND BARRICADING DETOUR PLAN SHALL BE PREPARED BY THE CONTRACTOR WHEN ANY PORTION OF THE WORK IS IN THE PUBLIC RIGHT-OF-WAY. THE PLAN SHALL BE SUBMITTED TO THE CONSTRUCTION CO-ORDINATION DIVISION FOR APPROVAL THREE (3) WORKING DAYS IN ADVANCE OF CONSTRUCTION.

LEGEND

- SEWER MAIN EXISTING DASHED
- MANHOLE AND FLOW DIRECTION
- SEWER SERVICE LINE
- WATER MAIN
- VALVE, FIRE HYD. & BARRICADE
- TEE / BEND / CAP
- WATER SERVICE AND METER

VICINITY MAP

D-15-Z

CITY OF ALBUQUERQUE
PUBLIC WORKS DEPARTMENT
ENGINEERING GROUP

TITLE:
LA PLAZA DE LA HUERTA TOWNHOUSES

APPROVALS	ENGINEER	DATE	APPROVALS	ENGINEER	DATE
DRG CHAIRMAN	<i>Ag. B...</i>	8-16-93	WATER	<i>R.W. Kane</i>	7-27-93
TRANSPORTATION	<i>...</i>		WASTE WATER	<i>R.W. Kane</i>	7-27-93
HYDROLOGY	<i>...</i>	9/4/93			

PROJECT NO. **4726.90** MAP NO. **D-15-Z** SHEET **1** OF **1**