

WATER SHUT-OFF PLAN

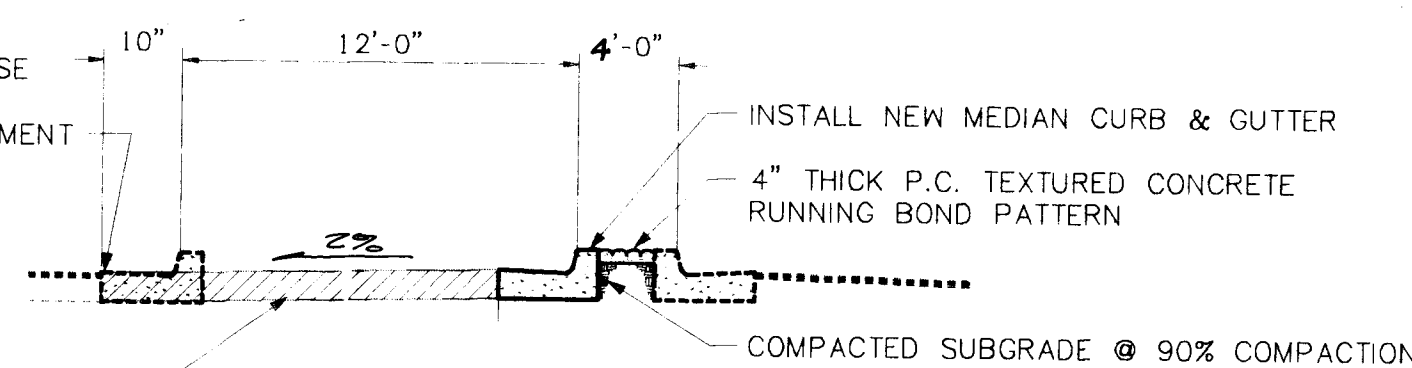
WATER SHUT-OFF REQUIREMENTS

CONTRACTOR WILL BE RESPONSIBLE FOR THE TIMING & COORDINATION OF THE WATER SHUT-OFF REQUIREMENTS IN CONJUNCTION WITH THE COMPLETION OF THIS PROJECT.

AT LEAST THREE (3) WORKING DAYS PRIOR TO CONSTRUCTION, THE CONTRACTOR SHALL CONTACT PWD/WATER SYSTEMS DIVISION (857-8200) TO INITIATE IMPLEMENTATION OF THIS WATER SHUT-OFF PLAN.

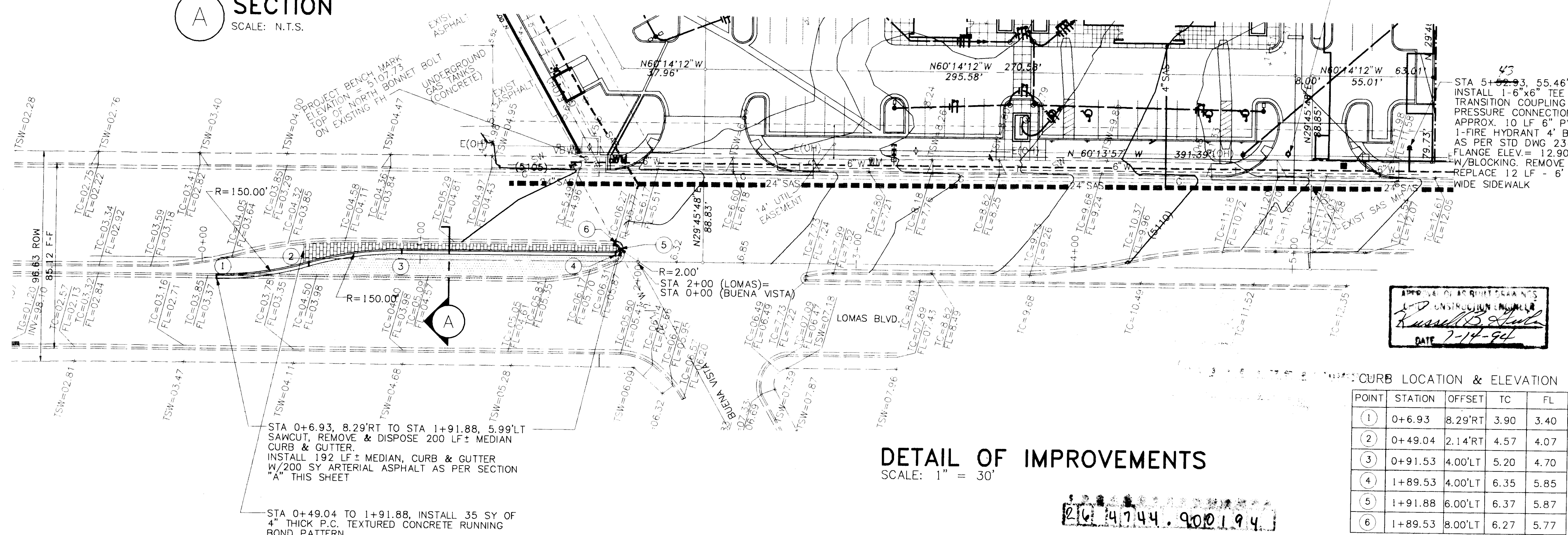
CLOSE VALVES
1084,1134,1191,1192

SAWCUT, REMOVE & DISPOSE EXISTING MEDIAN CURB, GUTTER, & ARTERIAL PAVEMENT



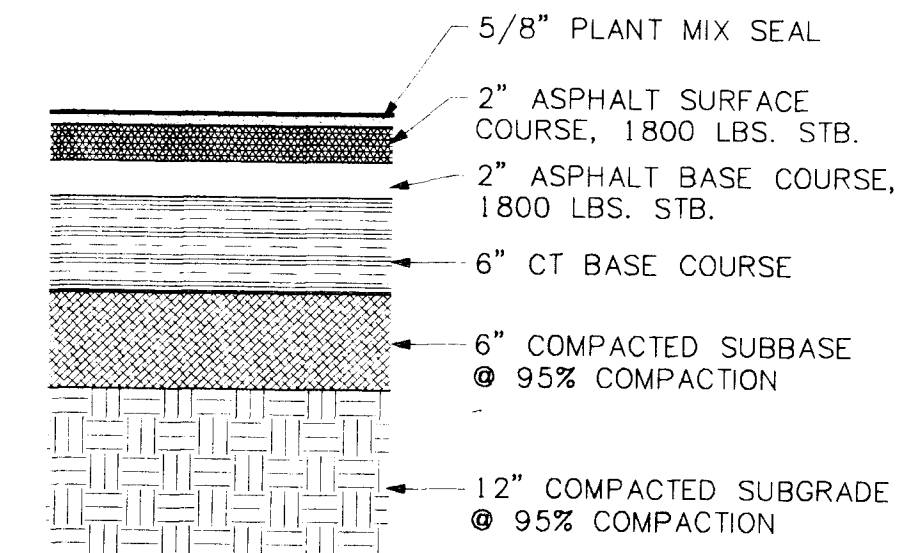
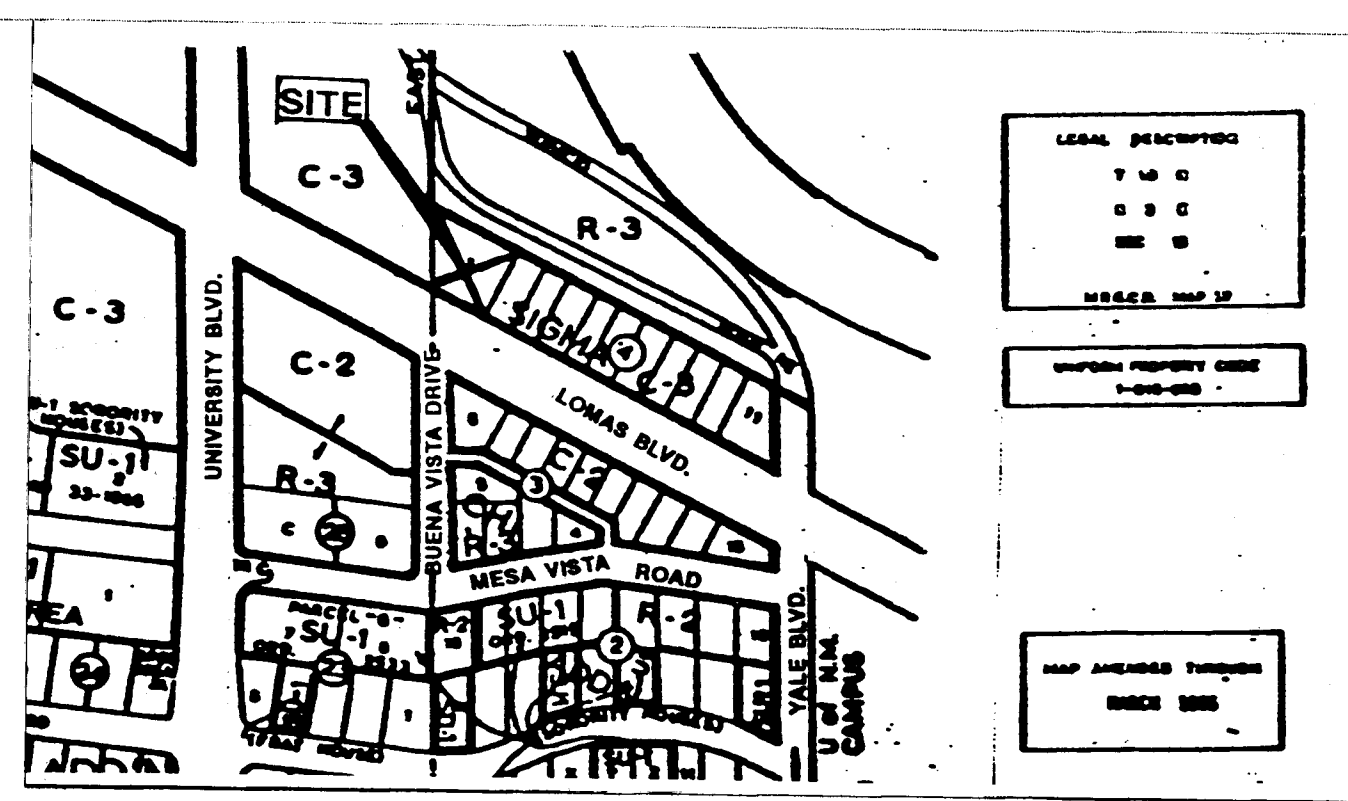
A SECTION
SCALE: N.T.S.

INSTALL NEW ARTERIAL PAVEMENT AS PER PAVEMENT SECTION ON THIS SHEET



DETAIL OF IMPROVEMENTS
SCALE: 1" = 30'

210 4744.900194



ARTERIAL PAVEMENT REPLACEMENT

- LEGEND**
- EXISTING FIRE HYDRANT
 - NEW FIRE HYDRANT
 - NEW WATERMETER
 - NEW ASPHALT
 - 6" WATER
 - EXISTING 24" SAS
 - NEW 4" SAS

STREET LIGHT TO BE RELOCATED UNDER BUILDING PERMIT PLANS

STA 51+02.93, 55.46' LT. INSTALL 1-6" x 6" TEE WITH TRANSITION COUPLING (NON PRESSURE CONNECTION) APPROX. 10 LF 6" PVC 1-FIRE HYDRANT 4" BURY AS PER STD DWG 2340 FLANGE ELEV. = 12.90 W/BLOCKING. REMOVE & REPLACE 12 LF - 6" WIDE SIDEWALK

APPROVED FOR CONSTRUCTION
3/24/94
DATE 7-14-94

POINT	STATION	OFFSET	TC	FL
1	0+6.93	8.29'RT	3.90	3.40
2	0+49.04	2.14'RT	4.57	4.07
3	0+91.53	4.00'LT	5.20	4.70
4	1+89.53	4.00'LT	6.35	5.85
5	1+91.88	6.00'LT	6.37	5.87
6	1+89.53	8.00'LT	6.27	5.77

NOTICE TO CONTRACTORS

- ALL WORK DETAILED ON THESE PLANS TO BE PERFORMED UNDER CONTRACT SHALL, EXCEPT AS OTHERWISE STATED OR PROVIDED HEREON, BE CONSTRUCTED IN ACCORDANCE WITH THE CITY OF ALBUQUERQUE STANDARD SPECIFICATIONS FOR PUBLIC WORKS CONSTRUCTION, 1986 EDITION (WITH UPDATE # 4).
- TWO WORKING DAYS PRIOR TO ANY EXCAVATION, THE CONTRACTOR MUST CONTACT NEW MEXICO ONE CALL SYSTEM (260-1990) FOR LOCATION OF EXISTING UTILITIES.
- PRIOR TO CONSTRUCTION, THE CONTRACTOR SHALL EXCAVATE AND VERIFY THE HORIZONTAL AND VERTICAL LOCATIONS OF ALL OBSTRUCTIONS. SHOULD A CONFLICT EXIST, THE CONTRACTOR SHALL NOTIFY THE ENGINEER OR SURVEYOR IMMEDIATELY SO THAT THE CONFLICT CAN BE RESOLVED WITH A MINIMUM AMOUNT OF DELAY.
- THREE (3) WORKING DAYS PRIOR TO BEGINNING CONSTRUCTION, THE CONTRACTOR SHALL SUBMIT TO CONSTRUCTION COORDINATION DIVISION, A DETAILED CONSTRUCTION SCHEDULE. TWO (2) WORKING DAYS PRIOR TO CONSTRUCTION, THE CONTRACTOR SHALL NOTIFY BARRICADE ENGINEER (768-2551) PRIOR TO OCCUPANCY AN INTERSECTION. REFER TO SECTION 19 OF THE GENERAL CONDITIONS OF THE STANDARD SPECIFICATIONS.
- CONTRACTOR SHALL NOTIFY THE ENGINEER NOT LESS THAN SEVEN (7) DAYS PRIOR TO STARTING WORK IN ORDER THAT THE ENGINEER MAY TAKE NECESSARY MEASURES TO INSURE THE PRESERVATION OF SURVEY MONUMENTS. CONTRACTOR SHALL NOT DISTURB PERMANENT SURVEY MONUMENTS WITHOUT THE CONSENT OF THE ENGINEER AND SHALL NOTIFY THE ENGINEER AND BEAR THE EXPENSE OF REPLACING ANY THAT MAY BE DISTURBED WITHOUT PERMISSION. REPLACEMENT SHALL BE DONE ONLY BY THE ENGINEER. WHEN A CHANGE IS MADE IN THE FINISHED ELEVATIONS OF THE PAVEMENT OF ANY ROADWAY IN WHICH A PERMANENT SURVEY MONUMENT IS LOCATED, CONTRACTOR SHALL AT HIS OWN EXPENSE, ADJUST THE MONUMENT COVER TO THE NEW GRADE, UNLESS OTHERWISE SPECIFIED. REFER TO SECTION 4.4 OF THE GENERAL CONDITIONS OF THE STANDARD SPECIFICATIONS.

THE FOLLOWING NOTES ALSO APPLY WHEN CHECKED

- ☒ ALL UTILITY SERVICE LINES SHALL BE INSTALLED PRIOR TO PAVING.
- ☐ BACKFILL COMPACTION SHALL BE ACCORDING TO SPECIFIED STREET USE.
- ☐ TACK COAT REQUIREMENTS SHALL BE DETERMINED BY THE CITY ENGINEER.
- ☐ SIDEWALKS AND WHEELCHAIR RAMPS WITHIN THE CURB RETURNS SHALL BE CONSTRUCTED WHEREVER A NEW CURB RETURN IS CONSTRUCTED.
- ☐ IF CURB IS DEPRESSED FOR A DRIVEPAD, THE DRIVEPAD SHALL BE CONSTRUCTED PRIOR TO ACCEPTANCE OF CURB AND GUTTER.
- ☒ ALL STORM DRAINAGE FACILITIES SHALL BE COMPLETED PRIOR TO FINAL ACCEPTANCE.
- ☒ THE REQUESTOR OR DEVELOPER SHALL BE RESPONSIBLE FOR REPAIR OR REPLACEMENT OF ALL CURB AND GUTTER OR SIDEWALK DAMAGED AFTER APPROVAL BY THE CITY ENGINEER OF WORK COMPLETED BY THE CONTRACTOR.

BPLW
Architects & Engineers, Inc.

2400 Louisiana Blvd. NE
Suite 402
Albuquerque, New Mexico 87110
(505) 861-2759

63 East Main Street
Suite 402
Mesa, Arizona 85201
(602) 827-2759

Designing to Shape the Future

CITY OF ALBUQUERQUE
PUBLIC WORKS DEPARTMENT
ENGINEERING GROUP

TITLE: UNIVERSITY BRANCH - NEW MEXICO
EDUCATORS FEDERAL CREDIT UNION

APPROVALS	ENGINEER	DATE	APPROVALS	ENGINEER	DATE
DRC Chairman	Ag. G. G. G.	8-31-93	Water	R.W. Kane	8-11-93
Transportation	Ag. G. G. G.	8-31-93	Waste Water	R.W. Kane	8-11-93
Hydrology	N/A JPC	8-16-93			
Parks & Rec.					

DRAWING NO.	4744.90	MAP NO.	J-15	SHEET	1 OF 1
-------------	---------	---------	------	-------	--------

SCANNED BY: LASON