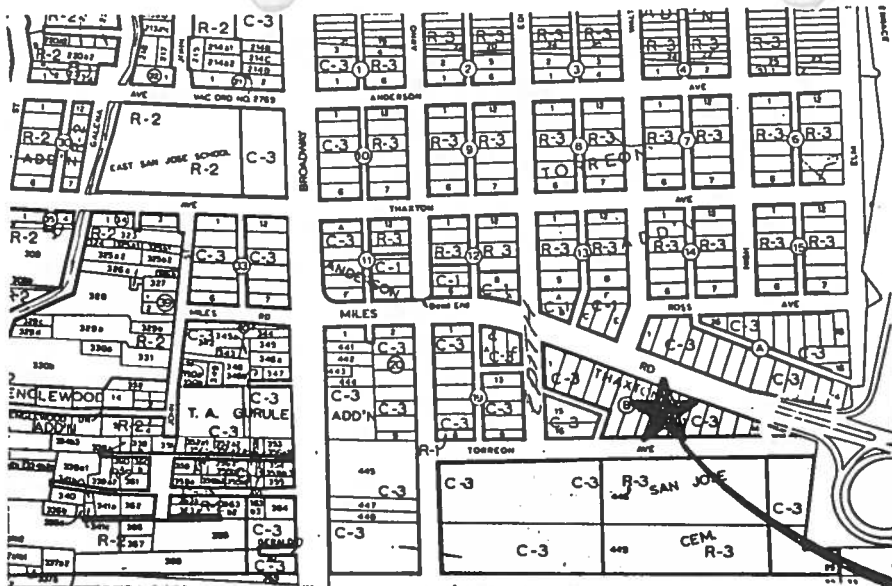


2 3 4 5 6 7 8 9 10 11 12 13 14
26-4762-2011

SCANNED BY
PLANNING



VICINITY MAP

SITE

NOTICE TO CONTRACTORS

1. ALL WORK DETAILED ON THESE PLANS TO BE PERFORMED UNDER CONTRACT SHALL, EXCEPT AS OTHERWISE STATED OR PROVIDED FOR HEREON, BE CONSTRUCTED IN ACCORDANCE WITH THE CITY OF ALBUQUERQUE STANDARD SPECIFICATIONS FOR PUBLIC WORKS CONSTRUCTION 1986, UPDATE NO.4.
2. TWO (2) WORKING DAYS PRIOR TO ANY EXCAVATION, THE CONTRACTOR MUST CONTACT LINE LOCATING SERVICE 260-1990, FOR LOCATION OF EXISTING UTILITIES.
3. PRIOR TO CONSTRUCTION, THE CONTRACTOR SHALL EXCAVATE AND VERIFY THE HORIZONTAL AND VERTICAL LOCATIONS OF ALL OBSTRUCTIONS, SHOULD A CONFLICT EXIST, THE CONTRACTOR SHALL NOTIFY THE ENGINEER OR SURVEYOR SO THAT THE CONFLICT CAN BE RESOLVED WITH MINIMUM AMOUNT OF DELAY.
4. THREE (3) WORKING DAYS PRIOR TO BEGINNING CONSTRUCTION THE CONTRACTOR SHALL SUBMIT TO THE CONSTRUCTION CO-ORDINATION DIVISION A DETAILED CONSTRUCTION SCHEDULE. TWO (2) WORKING DAYS PRIOR TO CONSTRUCTION THE CONTRACTOR SHALL OBTAIN A BARRICADING PERMIT FROM THE CONSTRUCTION CO-ORDINATION DIVISION. CONTRACTOR SHALL NOTIFY THE BARRICADE ENGINEER (768-2551) PRIOR TO OCCUPYING AN INTERSECTION; SEE SECTION 19 OF THE SPECIFICATIONS. ALL STREET STRIPPING ALTERED OR DESTROYED SHALL BE REPLACED IN KIND BY THE CONTRACTOR TO LOCATION AND IN KIND AS EXISTING OR AS INDICATED BY THIS PLAN SET.

THE FOLLOWING NOTES ALSO APPLY WHEN CHECKED

- 0 ALL UTILITIES AND UTILITY SERVICE LINES SHALL BE INSTALLED PRIOR TO PAVING.
- 0 BACKFILL COMPACTION SHALL BE IN ACCORDANCE WITH ARTERIAL STREET USE.
- 0 TACK COAT REQUIREMENTS SHALL BE DETERMINED BY THE CITY ENGINEER.
- 0 SIDEWALKS AND WHEELCHAIR RAMPS WITHIN THE CURB RETURNS SHALL BE CONSTRUCTED WHEREVER A NEW CURB RETURN IS CONSTRUCTED.
- 0 IF CURB IS DEPRESSED FOR A DRIVEPAD OR A HANDICAP RAMP, THE DRIVE PAD OR RAMP SHALL BE CONSTRUCTED PRIOR TO ACCEPTANCE OF THE CURB AND GUTTER.
- 0 ALL STORM DRAINAGE FACILITIES SHALL BE COMPLETED PRIOR TO FINAL ACCEPTANCE.

APPROVED AS RECORD DRAWINGS

DESIGN REVIEW SECTION

CITY CONSTRUCTION ENGINEER

DATE: 1-19-2011

BENCHMARK

ACS STATION "5-L14" LOCATED ON THE NORTH SIDE OF GIBSON BOULEVARD S. E., 500 FT. WEST OF THE CROSSING OF INTERSTATE I-25. ELEVATION = 5005.886

VIGIL ENGINEERING

7319 4th STREET, N.W.
ALBUQUERQUE, NEW MEXICO 87107
TEL: (505) 898-0142

ATTN: JACOB A. VIGIL

REV.	SHTS	CITY ENGINEER	DATE	USER DEPARTMENT	DATE

APPROVED FOR CONSTRUCTION

CITY ENGINEER

DATE

APPROVED FOR RECORD DWGS.

FIELD ENGINEER

DATE

CITY OF ALBUQUERQUE

APPROVALS	ENGINEERS	DATE	TITLE:	
D.R.C. CHAIRPERSON	B.G. Goolsby	12-16-93	MARTINES WAREHOUSE COMPLEX MEDIAN OPENING, DRIVEPADS, AND FIRE HYDRANT	
TRANSPORTATION	R. Paul	11-26-93		
HYDROLOGY	B. Montoya	11/30/93		
WATER	G. Neale	12/6/93	PROJECT NO.	MAP NO. L-14
WASTEWATER			4762.90	SHEET 1 OF 3

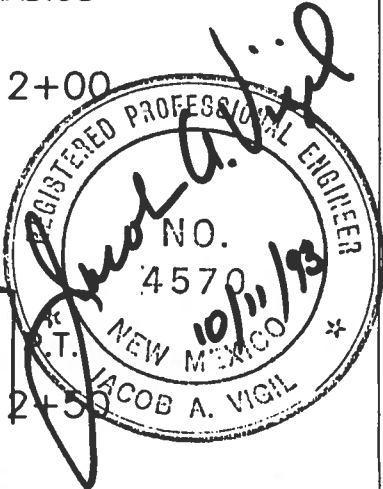
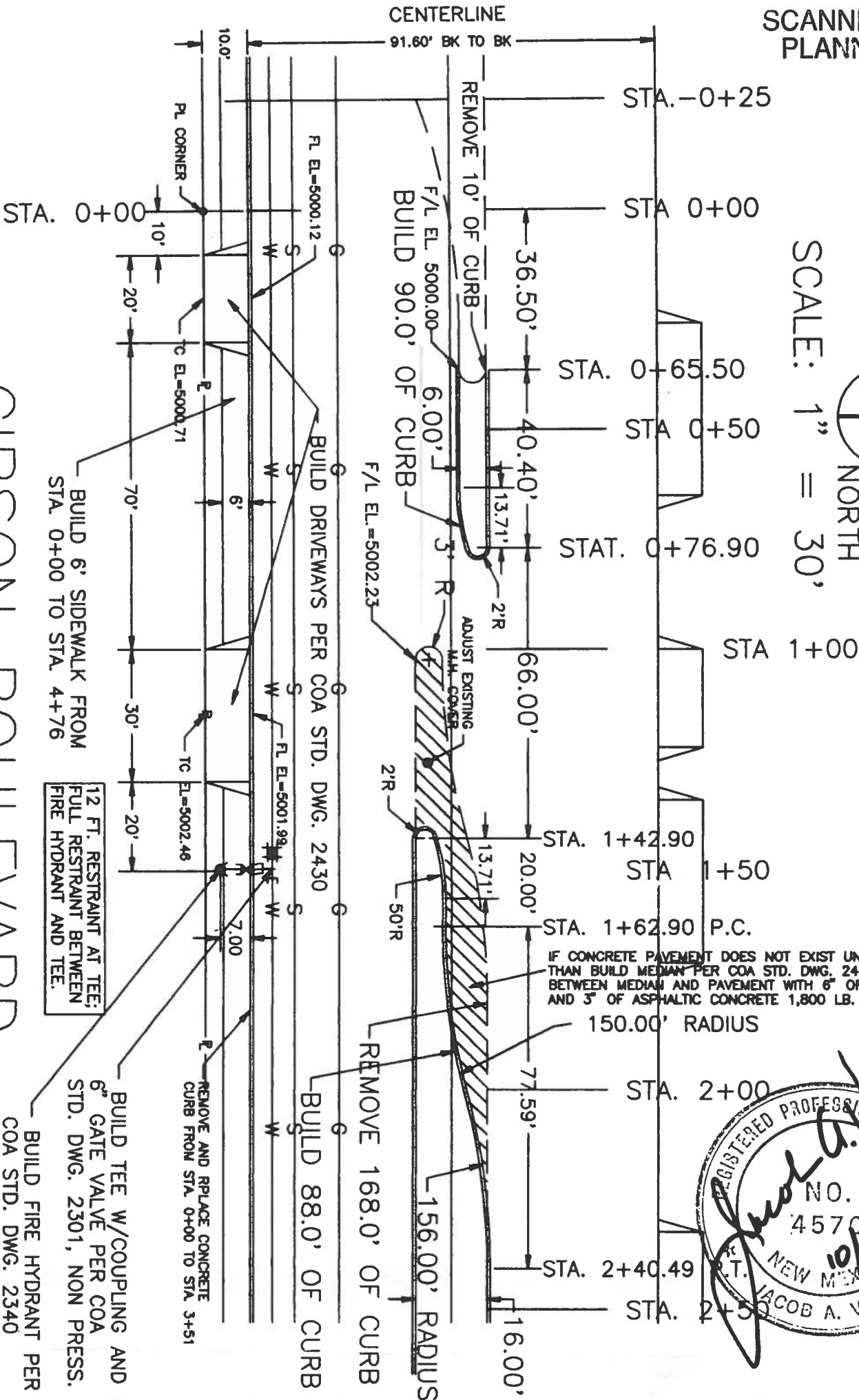
For Information Only

SCANNED BY
PLANNING

SCALE: 1" = 30'

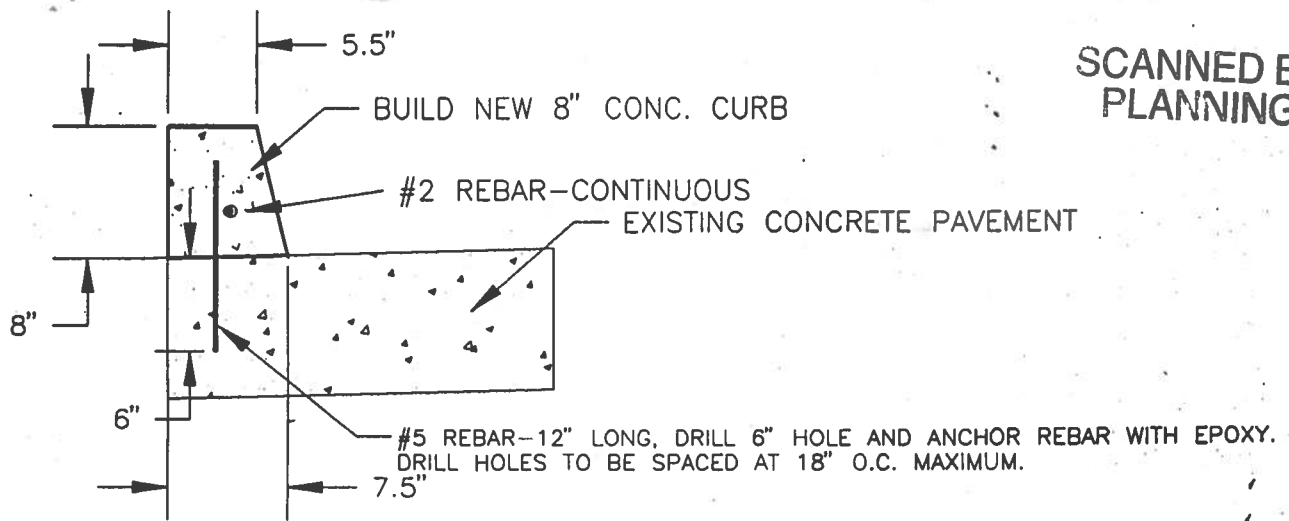


GIBSON BOULEVARD



CITY OF ALBUQUERQUE

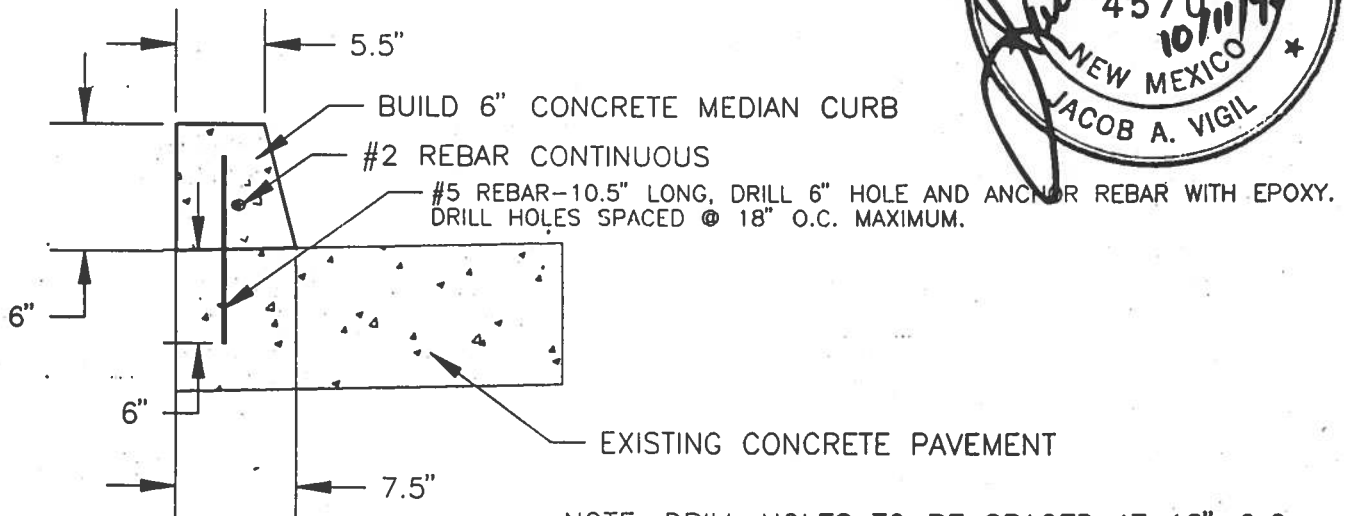
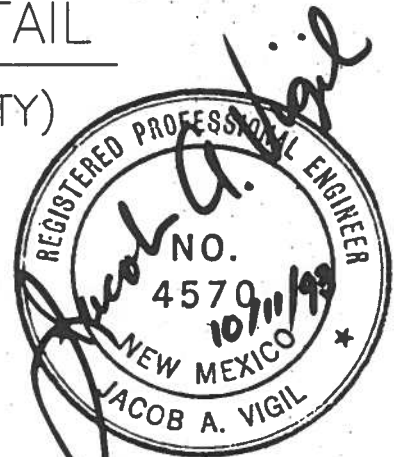
APPROVALS		ENGINEERS	DATE	TITLE: MARTINES WAREHOUSE COMPLEX	
D.R.C. CHAIRPERSON		B.G. Gooding	12-16-93		
TRANSPORTATION		R. Paul	12-06-93	MEDIAN OPENING, DRIVEPADS, CURB, AND FIRE HYDRANT	
HYDROLOGY		B. Montoya	11/30/93		
WATER		G. Sledge	12/6/93	PROJECT NO. 4762.90	MAP NO. SHEET 2 OF 3
WASTEWATER		G.R. NA	12/6/93		



SCANNED BY
PLANNING

CONCRETE CURB DETAIL

(USE DETAIL NEAR PROPERTY)



NOTE: DRILL HOLES TO BE SPACED AT 18" O.C. ALONG GEOMETRY OF MEDIAN OPENING.

CONCRETE CURB DETAIL

(DETAIL FOR MEDIAN CONCRETE CURB)

CITY OF ALBUQUERQUE

APPROVALS	ENGINEERS	DATE	TITLE:	
D.R.C. CHAIRPERSON	<i>B. J. Aoshing</i>	<i>12-16-93</i>	MARTINES WAREHOUSE COMPLEX MEDIAN OPENING, DRIVEPADS, AND FIRE HYDRANT	
TRANSPORTATION	<i>Robert</i>	<i>11-26-93</i>		
HYDROLOGY	<i>B. Montoya</i>	<i>11/30/93</i>		
WATER	<i>G. R. N/A</i>	<i>12/6/93</i>	PROJECT NO.	MAP NO. L-14
WASTEWATER			4762.90	SHEET 3 OF 3