

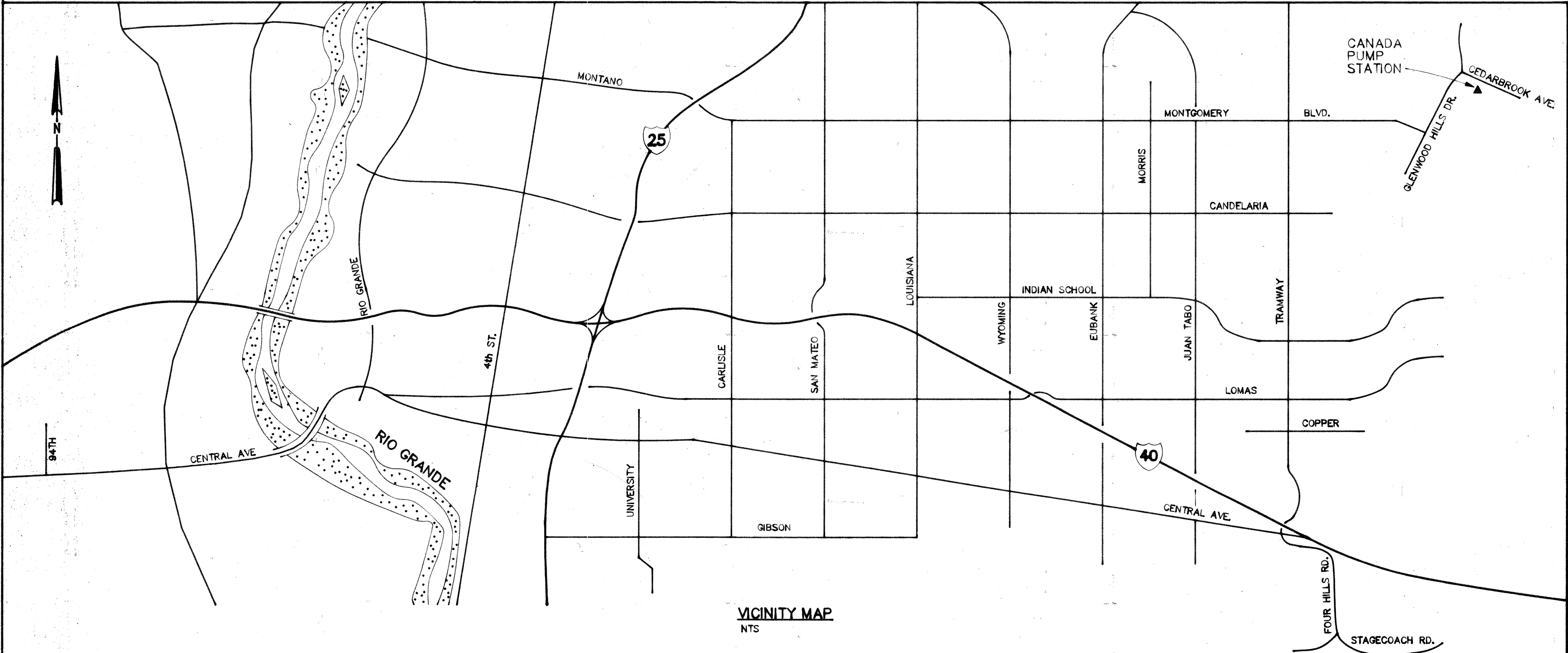
CITY OF ALBUQUERQUE
CAÑADA PUMP STATION UPGRADE
WATER SYSTEM REHABILITATION



SCANNED BY
MESA REPRO

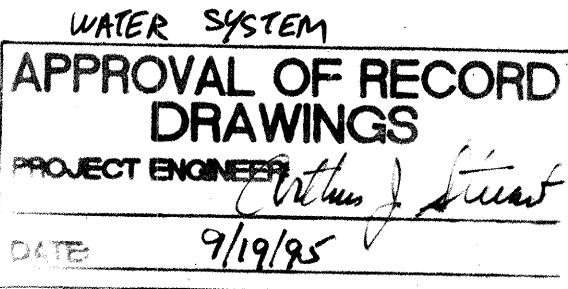
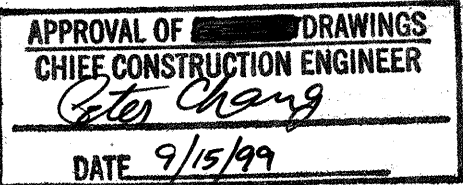
INDEX OF DRAWINGS

TITLE	SHEET
TITLE SHEET	1
SITE PLAN	2
PUMP AND PIPING MODIFICATIONS	3
ELECTRICAL PLAN	4
ONE-LINE DIAGRAM	5
ELECTRICAL DETAILS	6



VICINITY MAP
NTS

FOR INFORMATION ONLY

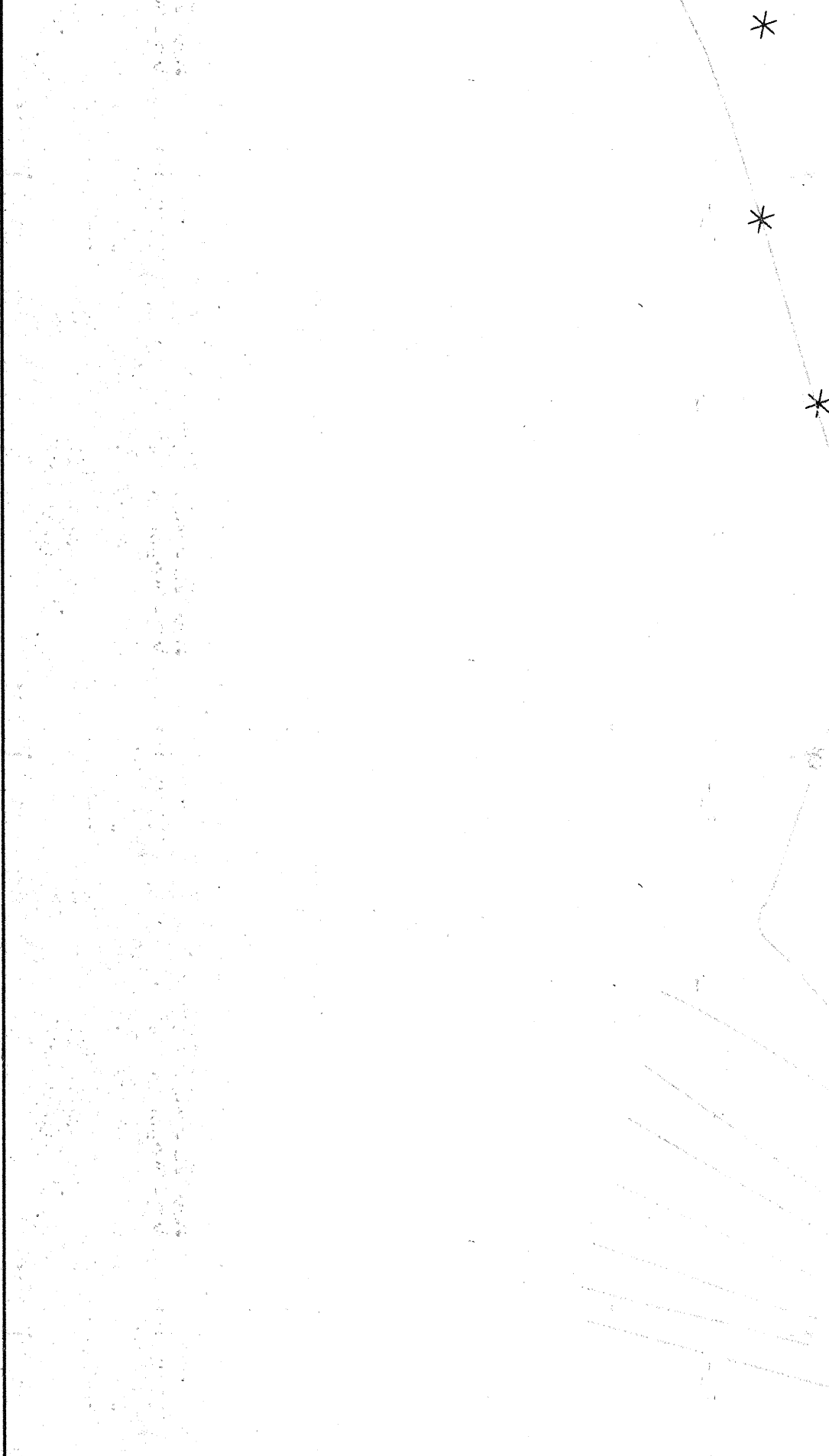


RECORD DRAWINGS

Revisions Drawn by *M. Brown* Date *9-18-95*

THESE RECORD DRAWINGS HAVE BEEN PREPARED, IN PART, ON THE BASIS OF INFORMATION COMPILED BY OTHERS. THEY ARE NOT INTENDED TO REPRESENT IN DETAIL THE EXACT LOCATION, TYPE OF COMPONENT NOR MANNER OF CONSTRUCTION. THE ENGINEER WILL NOT BE RESPONSIBLE FOR ANY ERRORS OR OMISSIONS WHICH HAVE BEEN INCORPORATED INTO THE RECORD DRAWINGS.

REV	SHEETS	CITY ENGINEER	DATE	USER DEPT	DATE	USER DEPT	DATE		
APPROVAL OF REVISIONS									
					APPROVED FOR CONSTRUCTION				
					<i>Robert B. Ruffel</i> 8/18/94				
			CH2M HILL 6121 Indian School Rd, NE Suite 122 Albuquerque, New Mexico 87110 (505) 884-5600		CE				
PROJECT NO.			4800.93			SHEET 1 OF 6			



SITE PLAN
1"=10'

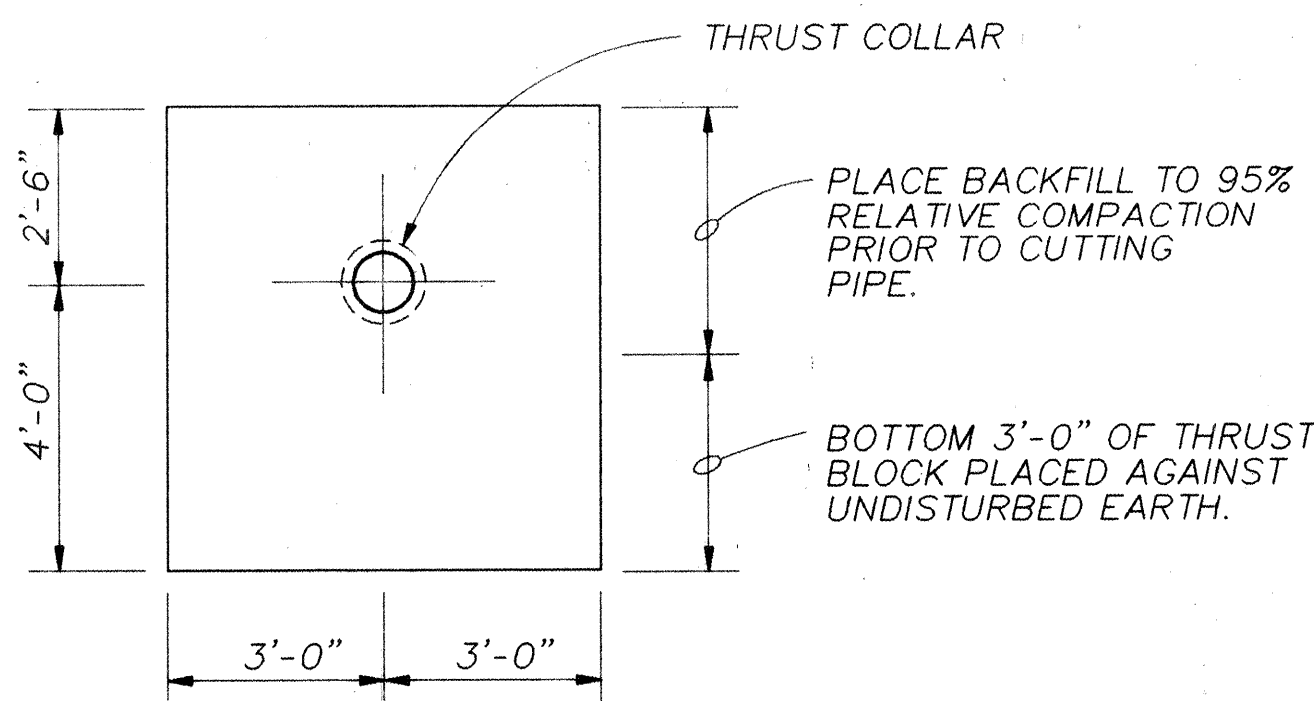
APPROVAL OF RECORD DRAWINGS
PROJECT ENGINEER *Arthur J. Street*
DATE 9/19/95

RECORD DRAWINGS

Revisions Drawn by *M. Brown* Date 9-18-95
THESE RECORD DRAWINGS HAVE BEEN PREPARED, IN PART, ON THE BASIS OF INFORMATION COMPILED BY OTHERS. THEY ARE NOT INTENDED TO REPRESENT IN DETAIL THE EXACT LOCATION, TYPE OF COMPONENT NOR MANNER OF CONSTRUCTION. THE ENGINEER WILL NOT BE RESPONSIBLE FOR ANY ERRORS OR OMISSIONS WHICH HAVE BEEN INCORPORATED INTO THE RECORD DRAWINGS.

EXISTING 10" DIP PIPE
EXISTING PUMP STATION ISOLATION VALVE
EXISTING CURB & GUTTER
CONSTRUCT CONCRETE THRUST BLOCK, SEE NOTE 4 AND 1
CONNECT NEW 10" DI PIPE TO EXST 10" VALVE WITH DI SPOOL, FLG x MJ W/ MEGALUG
NEW 10" 90° DI BEND, MJ x M.I. W/ MEGALUG
NEW 10" x 10" x 10" TEE, MJ x MJ x MJ W/ MEGALUGS, SEE NOTES
ROD RESTRAINTS BETWEEN MEGALUGS
EXST PUMP STATION DISCHARGE PIPING
TEMPORARY PUMP STATION SUCTION LINE (BY OTHERS) SEE NOTE 9
TEMPORARY PUMP STATION DISCHARGE LINE (BY OTHERS) SEE NOTE 9
EXISTING ELECTRICAL SERVICE
CANADA PUMP STATION
GENERATOR BUILDING
EXISTING METER PIT
EXST PUMP STATION DISCHARGE ISOLATION VALVE
EXST 10" PUMP STATION DISCHARGE PIPE
THRUST COLLAR- EBAA IRON SPLIT MEGALUG WITH BACKING RING - MODEL 1110SDB - SEE NOTE 8
#5 @ 12" EW, EF
CAST IN PLACE CONC THRUST BLOCK - SEE NOTES
10'-0" MIN TO TOP OF EXCAVATION

PLAN



ELEVATION

DETAIL 1
SCALE: 3/8" = 1'-0"

NOTES:

- CONTRACTOR SHALL FIELD VERIFY ALL DIMENSIONS, ELEVATIONS, PIPE SIZES AND PIPE MATERIALS PRIOR TO FABRICATION OR ORDERING OF MATERIALS. SOME INTERFERENCES MAY EXIST BETWEEN THE NEW AND EXST WORK, CONSULT THE ENGINEER FOR RESOLUTION OF CONFLICTS PRIOR TO PROCEEDING WITH THE WORK.
- THE SITE PLAN LAYOUT SHOWING EXST LOCATIONS OF FACILITIES WAS DEVELOPED FROM ORIGINAL CONSTRUCTION DRAWINGS AND IN SOME CASES MORE RECENT INFORMATION AVAILABLE AT THE TIME OF DEVELOPMENT OF THESE DRAWINGS. THIS LAYOUT IS PROVIDED FOR GENERAL INFORMATION ONLY. ACTUAL LOCATIONS OF FACILITIES MAY VARY FROM THOSE SHOWN.
- CONTRACTOR SHALL TAKE CARE AND PRECAUTIONS IN PERFORMING THIS WORK TO AVOID DAMAGING EXST FACILITIES AND EQUIPMENT. HAND EXCAVATION WILL BE REQUIRED TO LOCATE AND CONFIRM PIPE LOCATIONS AND MATERIALS. ANY DAMAGE TO EXST FACILITIES AS A RESULT OF THIS PROJECT SHALL BE REPAIRED AT THE SOLE COST OF THE CONTRACTOR.
- PRIOR TO INSTALLATION OF THE NEW 10" x 10" x 10" TEE THE CONTRACTOR SHALL EXCAVATE, CONSTRUCT AND CURE A CONCRETE THRUST COLLAR AROUND THE EXST 10" PUMP STATION DISCHARGE LINE. THE EXACT LOCATION OF THE THRUST COLLAR WILL BE DETERMINED IN THE FIELD BY THE ENGINEER. UNDER NO CIRCUMSTANCES WILL WORK TO INSTALL THE NEW TEE BE ALLOWED UNTIL THE THRUST BLOCK IS IN PLACE AND HAS REACHED SPECIFIED STRENGTH AND WORK IS AUTHORIZED BY THE ENGINEER.
- TOP OF EXCAVATION FOR TEE INSTALLATION SHALL BE MINIMUM 10'-0" FROM FACE OF CONCRETE THRUST COLLAR.
- CONCRETE THRUST BLOCKS SHALL BE CONSTRUCTED FROM 4000 PSI CONCRETE AND IN ACCORDANCE WITH CITY OF ALBUQUERQUE STD. DWG. 2320.
- CONTRACTOR SHALL REPAIR OR REPLACE TO OWNERS SATISFACTION LANDSCAPING AND IRRIGATION SYSTEM DAMAGED AS A RESULT OF HIS OPERATION AT NO COST TO THE OWNER.
- INSTALL THRUST COLLAR PER MFR RECOMMENDATIONS AND TO RESIST THRUST IN PROPER DIRECTIONS.
- PUMP STATION AND PIPING TO BE INSTALLED BY OTHERS. ELECTRICAL CONNECTIONS TO BE MADE UNDER THIS CONTRACT. SEE SHEET 5.

ABBREVIATIONS

AT	BEARING	MT	MALE THREAD
BRG	CHANNEL	NTS	NOT TO SCALE
C	CONCRETE CYLINDER PIPE	OC	ON CENTER
CCP	CAST IRON PIPE	OD	OUTSIDE DIAMETER
CI	CENTERLINE	PJF	PREMOLDED JOINT FILLER
CL	CONTINUOUS	PP	PLATE
CONT	COUPLING	RCP	POWER POLE
CPLG	CONCENTRIC	RDR	REINFORCED CONCRETE PIPE
CONC	DUCTILE IRON PIPE	REQD	REDUCER
DIA	DOWN	SCH, SCHED	REQUIRED
DI	EACH	SIM	SCHEDULE
DN	EACH FACE	SST	SIMILAR
EA	EACH WAY	S x S	STAINLESS STEEL
EF	EXISTING	STL	SOCKET BY SOCKET
EW	FLANGE	T&B	STEEL
EXST	GALVANIZED	TS	TOP AND BOTTOM
FLG	ANGLE	TYP	TUBE SHAPE
GALV	MAXIMUM	V	TYPICAL
L	MACHINE BOLT	W	VOLT
MAX	MILLION GALLON	W/	WATER
MB	MANHOLE		WITH
MG			
MH			

LEGEND

	NEW PIPING
	EXISTING PIPING
	EXISTING STRUCTURE
	PROPERTY LINE
	FENCE LINE
	VALVE
	TREES

VERIFY SCALES
BAR IS ONE INCH ON ORIGINAL DRAWING
0" 1"
IF NOT ONE INCH ON THIS SHEET, ADJUST SCALES ACCORDINGLY.

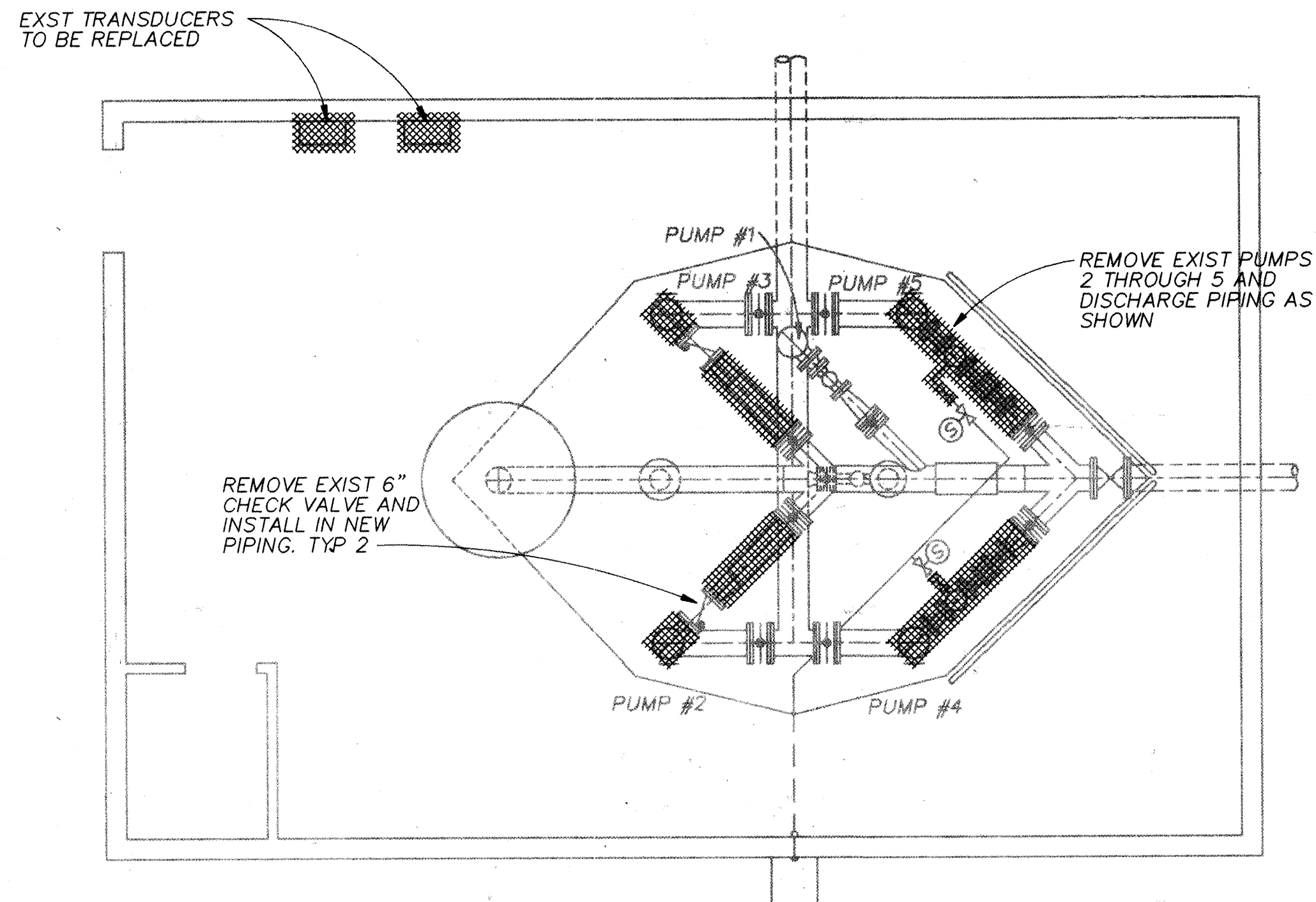
Barbara L. Crockett
10873
9/19/95

CITY OF ALBUQUERQUE
PUBLIC WORKS DEPARTMENT
ENGINEERING DIVISION

TITLE: CANADA PUMP STATION
SITE PLAN

APPROVALS	ENGINEER	DATE	APPROVALS	ENGINEER	DATE
D.R.C. Chair			Water		
Trans. Dev.			Waste Water		
Hydrology					
DRAWING NO.	MAP NO.	SHEET 2 OF 6			

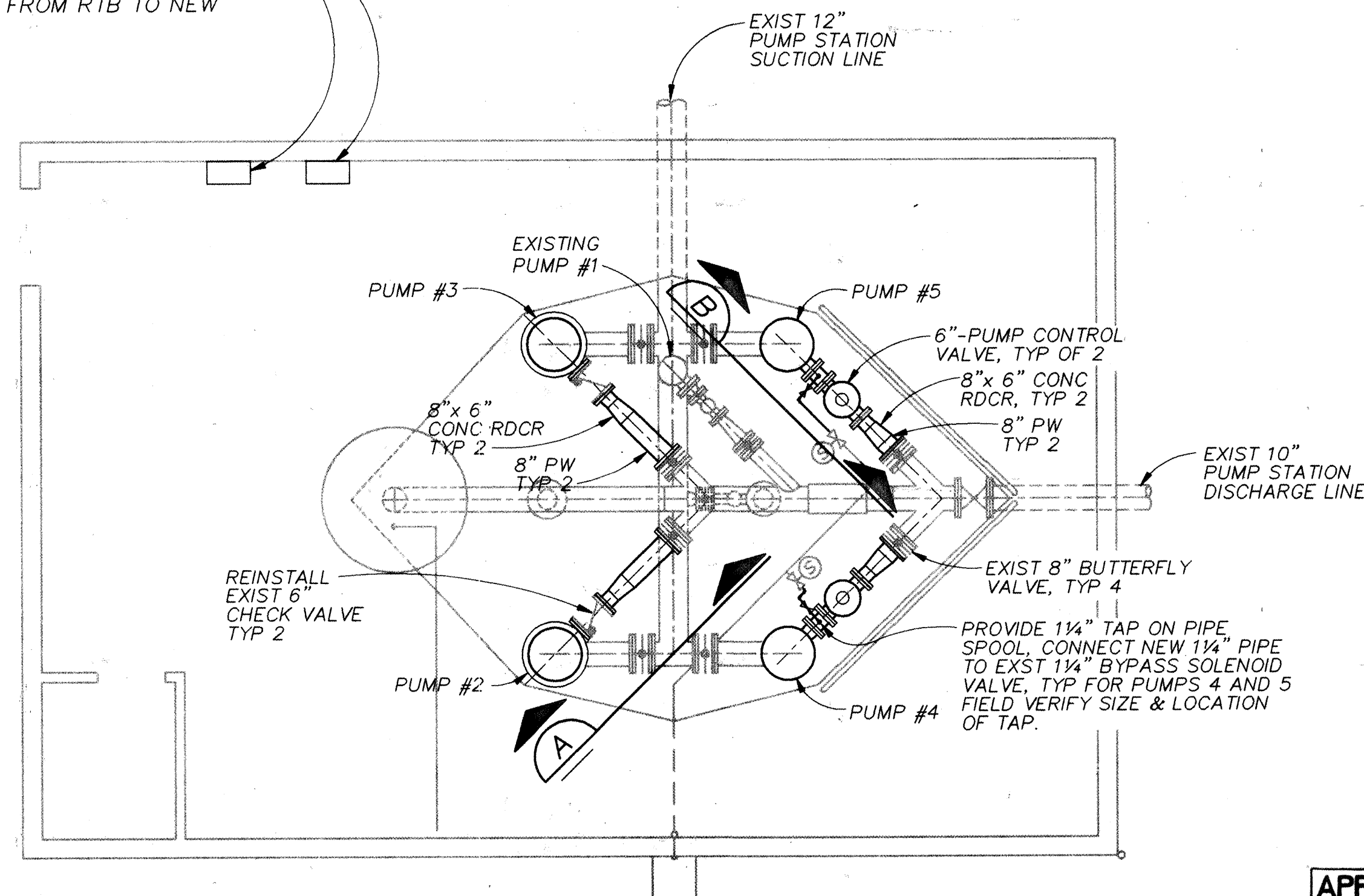
SCANNED BY
MESA REPRO



DEMOLITION PLAN

1/4"=1'-0"

REPLACE EXST PUMP STATION SUCTION AND DISCHARGE PRESSURE TRANSUCERS WITH NEW HONEYWELL MODEL STG 644-EIG-00000-DM 0-500-PSIG TRANSUCERS. PROVIDE NEW WIRE AND CONDUIT FROM RTB TO NEW TRANSUCERS.



PLAN

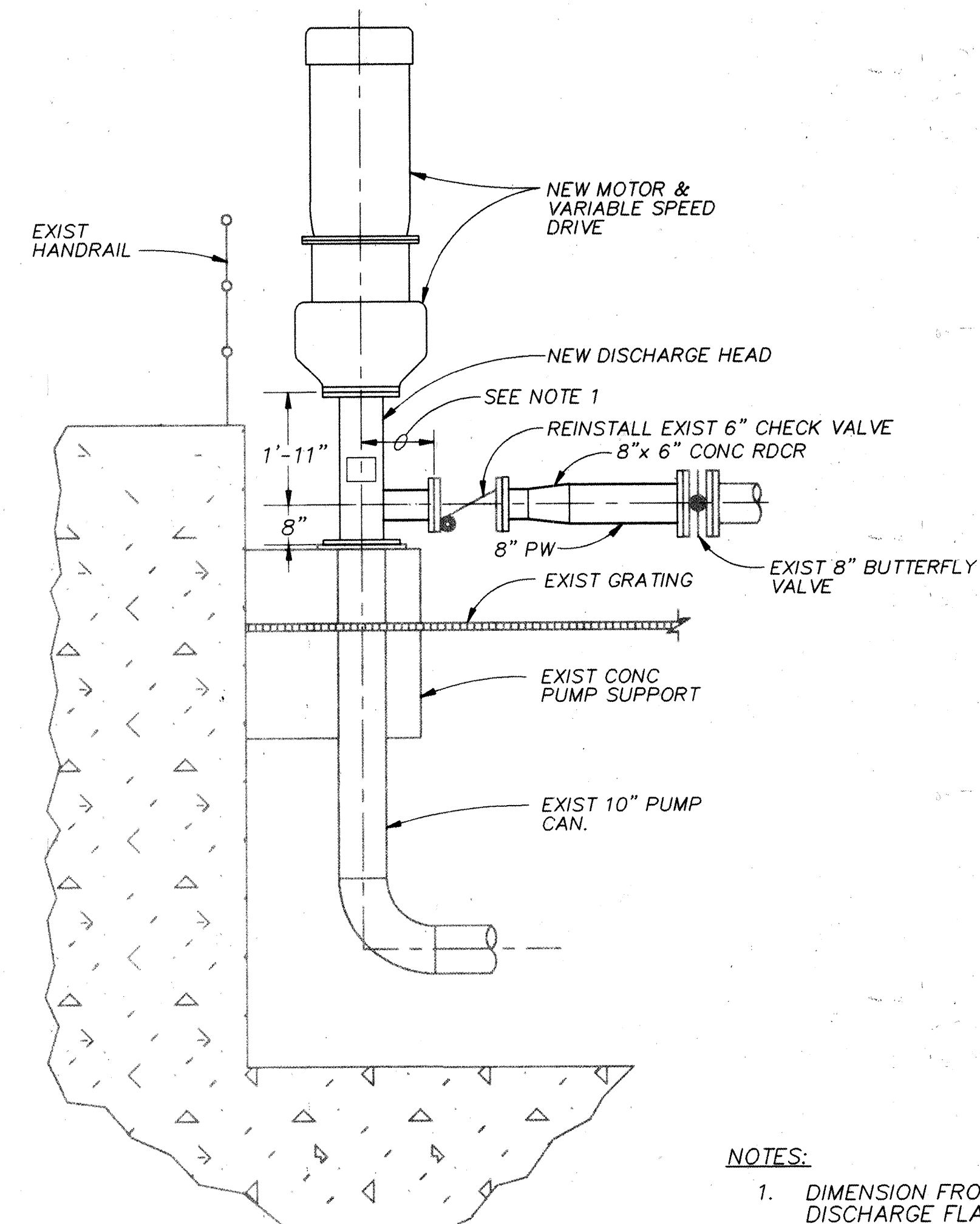
1/4"=1'-0"

APPROVAL OF RECORD DRAWINGS
PROJECT ENGINEER *[Signature]*
DATE 9/19/95

RECORD DRAWINGS

Revisions Drawn by *M. Brown* Date 9-18-95

THESE RECORD DRAWINGS HAVE BEEN PREPARED, IN PART, ON THE BASIS OF INFORMATION COMPILED BY OTHERS. THEY ARE NOT INTENDED TO REPRESENT IN DETAIL THE EXACT LOCATION, TYPE OF COMPONENT NOR MANNER OF CONSTRUCTION. THE ENGINEER WILL NOT BE RESPONSIBLE FOR ANY ERRORS OR OMISSIONS WHICH HAVE BEEN INCORPORATED INTO THE RECORD DRAWINGS.

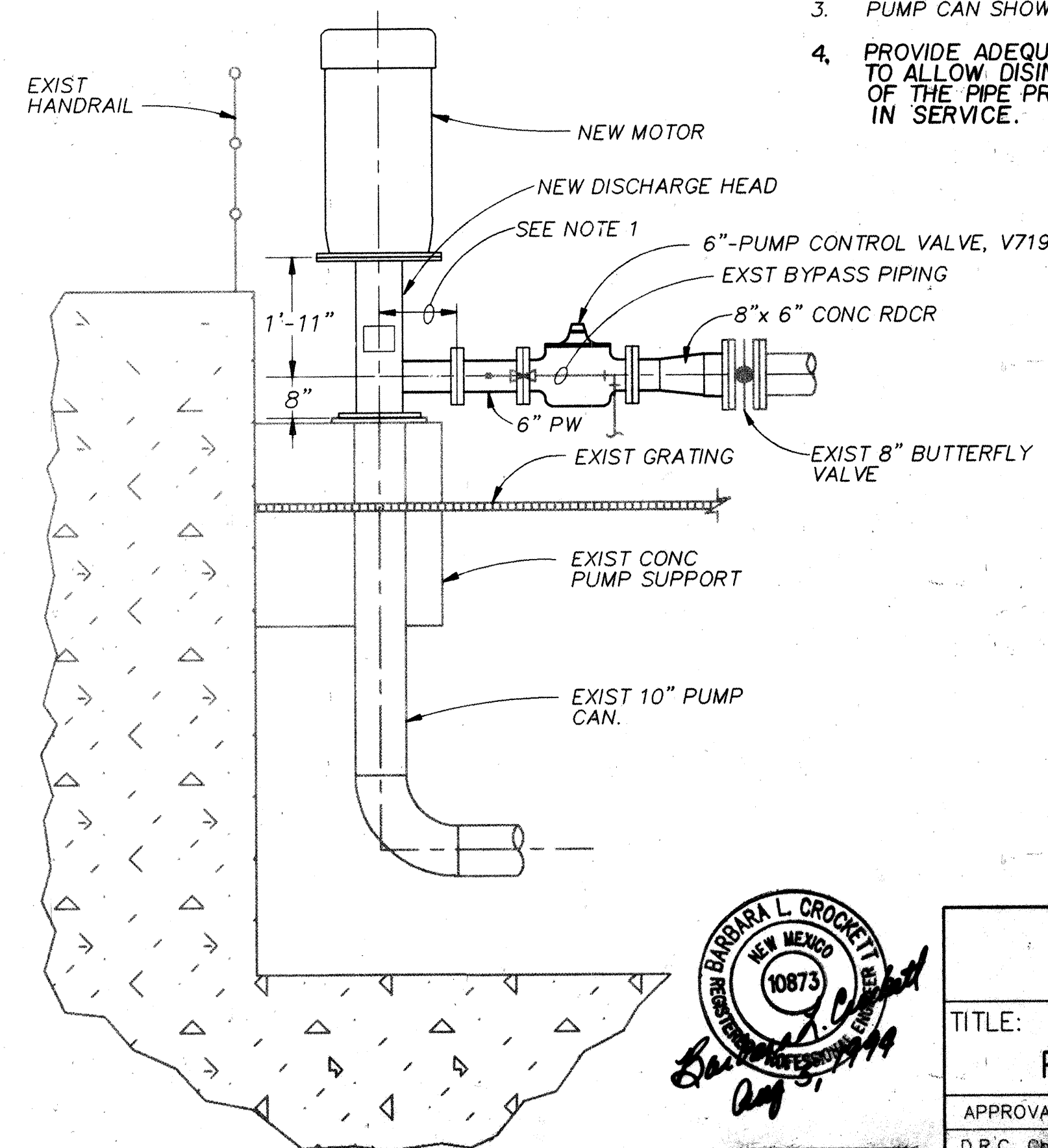


SECTION A

1/2"=1'-0"

NOTES:

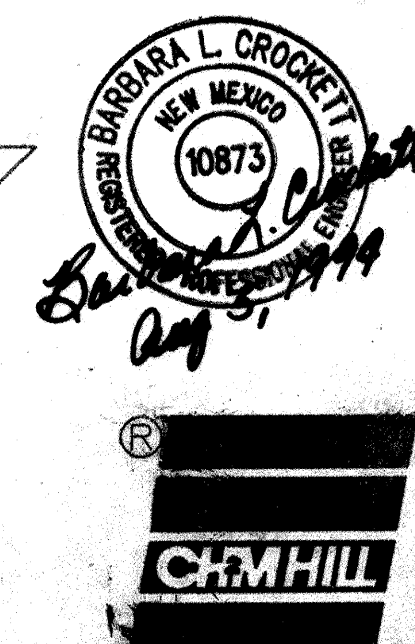
1. DIMENSION FROM THE PUMP ϕ TO THE DISCHARGE FLANGE SHALL BE AS REQUIRED TO CLEAR THE PUMP BASE AND EXISTING FOUNDATION.
2. CONTRACTOR SHALL FIELD VERIFY ALL DIMENSIONS PRIOR TO FABRICATION OF THE PUMP DISCHARGE HEAD AND PIPING.
3. PUMP CAN SHOWN ROTATED FOR CLARITY.
4. PROVIDE ADEQUATE TAPS ON NEW PIPING TO ALLOW DISINFECTION AND FLUSHING OF THE PIPE PRIOR TO PLACING PIPE IN SERVICE.



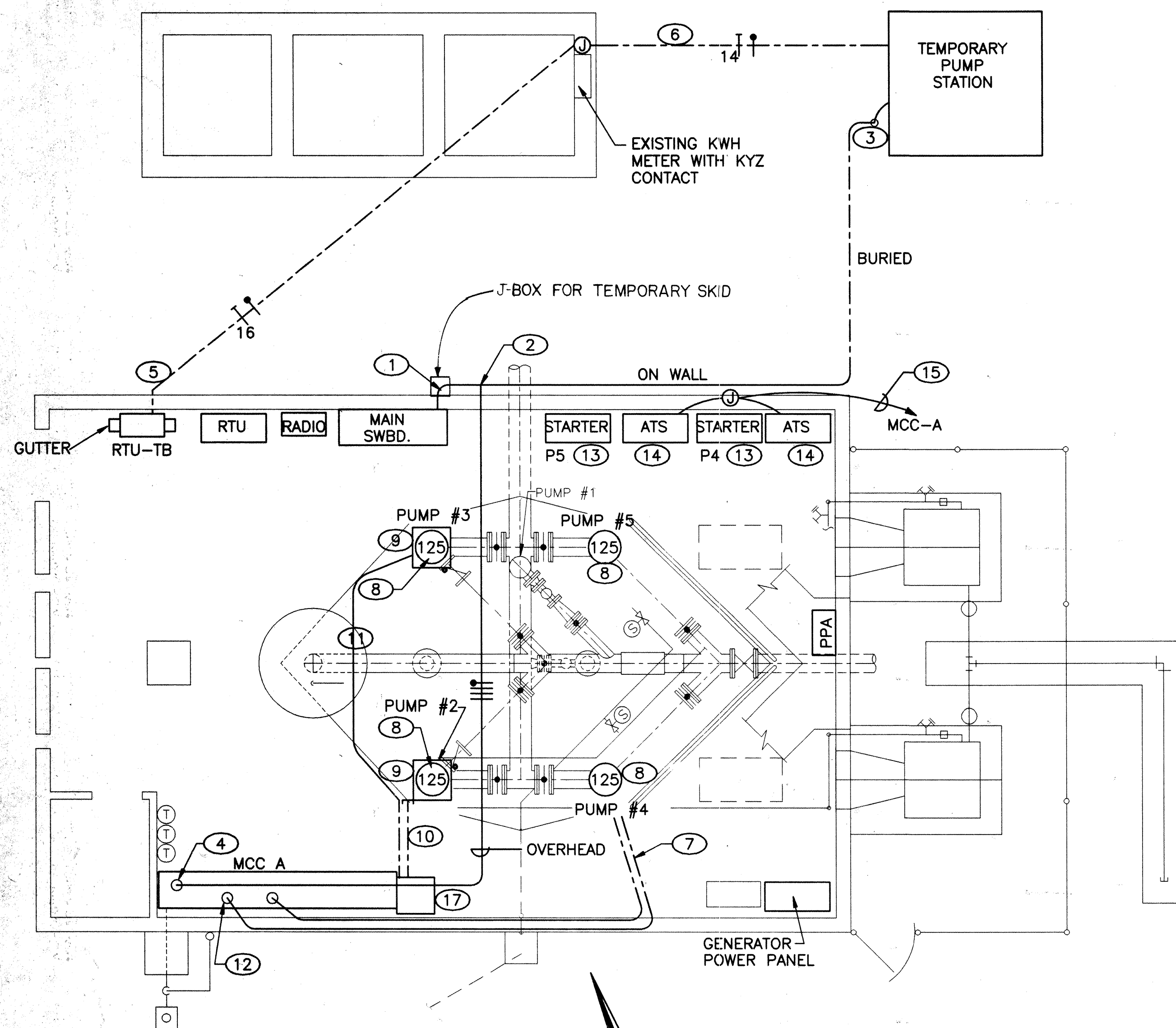
SECTION B

1/2"=1'-0"

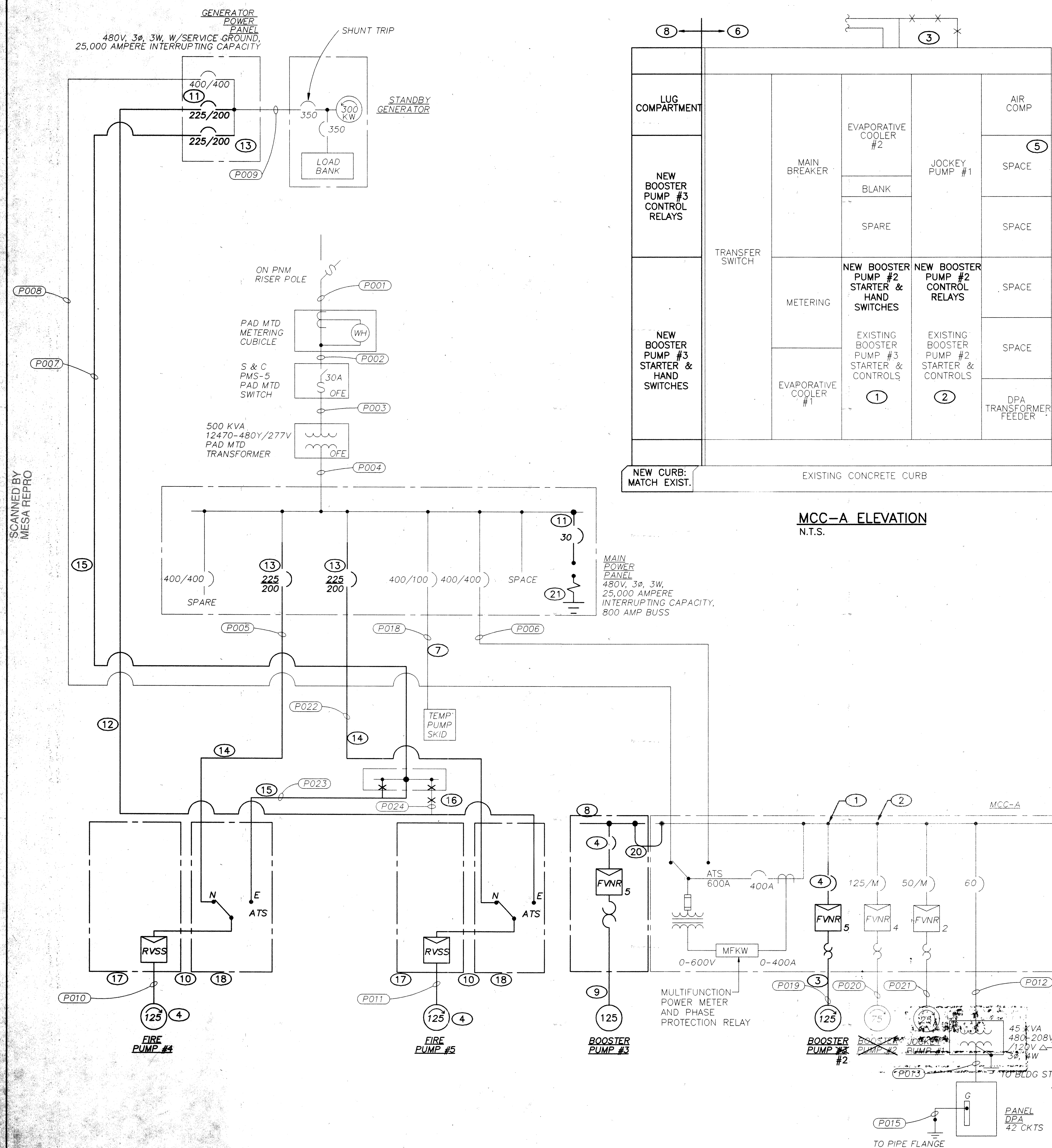
VERIFY SCALES
BAR IS ONE INCH ON ORIGINAL DRAWING
0" 1"
IF NOT ONE INCH ON THIS SHEET, ADJUST SCALES ACCORDINGLY.



CITY OF ALBUQUERQUE PUBLIC WORKS DEPARTMENT ENGINEERING DIVISION					
TITLE: CAÑADA PUMP STATION UPGRADE PUMP AND PIPING MODIFICATIONS					
APPROVALS	ENGINEER	DATE	APPROVALS	ENGINEER	DATE
D.R.C. Check			Water		
Trans. Dev.			Waste Water		
Hydrology					
DRAWING NO.		MAP NO. F-23		SHEET 3 OF 6	

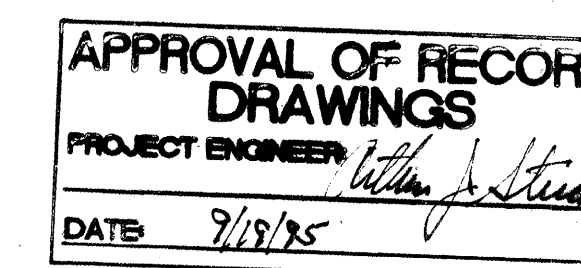


ENGINEER'S SEAL	SURVEY INFORMATION		BENCH MARKS	AS BUILT INFORMATION
	FIELD NOTES			
	NO.	BY	DATE	
				CONTRACTOR
				STAKED BY
				INSPECTOR'S
				PERFORMANCE BY
				FIELD
				VERIFICATION BY
				DATE
				DATE
				CORRECTED BY
				DATE
				MICRO-FILM INFORMATION
				RECORDED BY
				DATE
				NO.



NOTES

- REMOVE FIELD WIRING. REMOVE CUBICLE. DELIVER TO OWNER. INSTALL NEW NEMA SIZE 5 COMBINATION DRAWOUT STARTER, CUBICLE, AND DOOR. SUPPLY WESTINGHOUSE TO MATCH EXISTING. SEE SCHEMATIC FOR FURTHER REQUIREMENTS.
- REMOVE FIELD WIRING. REMOVE CUBICLE. DELIVER TO OWNER. INSTALL BLANK PAN AND NEW DOOR. SUPPLY WESTINGHOUSE TO MATCH EXISTING. INSTALL CONTROL COMPONENTS AND TERMINAL BOARDS AS SHOWN ON THE SCHEMATICS. MAKE ALL CONNECTIONS.
- REMOVE EXISTING CONDUCTORS FROM 2 EXISTING 1 1/2" CONDUIT. RELOCATE EXISTING CONDUIT FOR EXISTING STARTER 2 INTO THE SAME MCC SECTION WITH NEW STARTER FOR NEW PUMP 2. EXTEND BOTH CONDUITS AT FIELD END. INSTALL NEW 3 #1/0 AND #4 GROUND IN EACH CONDUIT.
- MOTOR CIRCUIT PROTECTOR, SIZED AS RECOMMENDED BY THE MCC MANUFACTURER.
- SPACE HAS REMOVABLE COVERS OVER STAB OPENINGS ONTO 300 A VERTICAL BUS. INSTALL NEW 100 A TRIP 24 KAIC THERMOMAGNETIC CIRCUIT BREAKER, CUBICLE, HANDLE MECHANISM, AND DOOR WITH NAMEPLATE. SUPPLY WESTINGHOUSE TO MATCH EXISTING.
- EXISTING MOTOR CONTROL CENTER IS WESTINGHOUSE SERIES 2100, DA22634, IT.1-FVC, APR.91.
- 3 #2 AND #6 GROUND IN 1 1/2" CONDUIT. PART OF CONDUIT IS EXISTING AND PART IS NEW AS SHOWN ON PLAN VIEW.
- INSTALL NEW 20" X 20" X 90" MCC SECTION ADJACENT TO EXISTING. FURNISH LUG COMPARTMENT, CONTROLS COMPARTMENT, AND NEMA SIZE 5 COMBINATION DRAWOUT STARTER, COMPLETE. MCC AND POWER COMPONENTS: WESTINGHOUSE TO MATCH EXISTING. FOR CONTROLS, COMPLY WITH SCHEMATIC AND MATCH NEW PUMP 3.
- NEW CONDUIT AND CONDUCTORS TO MOTOR. 3 #3/0 AND #2 GROUND IN 2" CONDUIT.
- EXISTING FIRE PUMP CONTROLLER IS FIRELITE FTA1000-CB75B-T-X-TS AND TRANSFER SWITCH IS FIRETROL FTA900-BD150B. DISCONNECT AND REMOVE ALL 4 CABINETS.
- INSTALL NEW BUS CONNECTOR STRAPS, CIRCUIT BREAKER, COVER PLATE, AND NAME PLATE AT EXISTING SPACE. MATCH EXISTING.
- NEW 3 #3/0 AND #2 GROUND IN NEW 2 1/2" CONDUIT.
- REMOVE EXISTING 400 A FRAME CIRCUIT BREAKER. INSTALL NEW CIRCUIT BREAKER. INSTALL NEW BUS CONNECTOR STRAPS IF NEEDED. INSTALL NEW COVER PLATES. INSTALL NEW NAMEPLATES. MATCH EXISTING.
- REMOVE EXISTING CONDUCTORS. REUSE EXISTING CONDUIT WHERE PRACTICAL EXCEPT CONDUCTORS MAY NO LONGER GO THROUGH GUTTER. EXTEND CONDUIT AS NEEDED. INSTALL NEW 3 #3/0 AND #2 GROUND.
- REMOVE EXISTING CONDUCTORS. REUSE EXISTING 3" CONDUIT FROM GENERATOR POWER PANEL TO GUTTER. INSTAL NEW 2" CONDUIT FROM GUTTER TO ATS. INSTALL NEW 3 #3/0 AND #2 GROUND.
- REMOVE EXISTING TAP.
- NEW STARTER AS DESCRIBED ON PLAN VIEW.
- NEW ATS AS DESCRIBED ON PLAN VIEW.
- PULL EXISTING 4 #14 CONTROL WIRING FROM STARTER 3 TO RTU. PULL BACK IN NEW 6 #14 LONG ENOUGH TO REACH NEW STARTER 3. RECONNECT 4; 2 ARE SPARE.
- CONNECT NEW SECTION OF MCC TO MCC-A WITH 3 #4/0 AND #2 GROUND. USE HYDRAULIC COMPRESSION LUGS. THERE ARE EXISTING PUNCHED HOLES IN THE HORIZONTAL BUS AT MCC-A. ENLARGE IF NECESSARY. BOLT LUGS ONTO BUS WITH 3/8" GRADE 5 (HIGH STRENGTH) HARDWARE AND BELLEVILLE WASHERS.
- INSTALL NEW TRANSIENT SUPPRESSOR, EFI MODEL MBP277EFI-Y3 OR ENGINEER APPROVED EQUIVALENT. NOTE: NOT SHOWN ON PLAN VIEW.



RECORD DRAWINGS

Revisions Drawn by *M.B. Brown* Date *9-18-95*

THESE RECORD DRAWINGS HAVE BEEN PREPARED, IN PART, ON THE BASIS OF INFORMATION COMPILED BY OTHERS. THEY ARE NOT INTENDED TO REPRESENT IN DETAIL THE EXACT LOCATION, TYPE OF COMPONENT NOR MANNER OF CONSTRUCTION. THE ENGINEER WILL NOT BE RESPONSIBLE FOR ANY ERRORS OR OMISSIONS WHICH HAVE BEEN INCORPORATED INTO THE RECORD DRAWINGS.



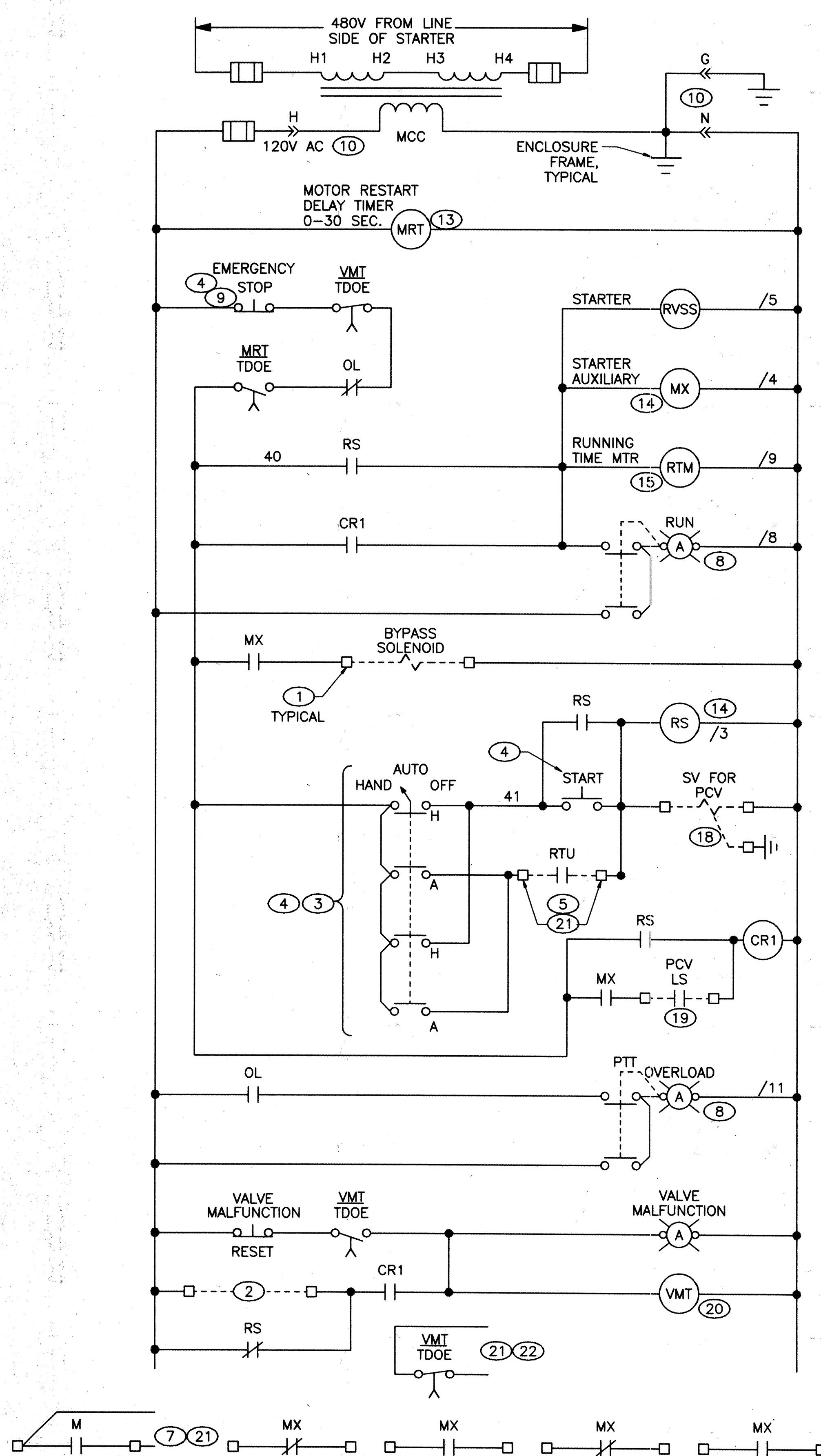
MOLZEN-CORBIN & ASSOCIATES

VERIFY SCALES
BAR IS ONE INCH ON ORIGINAL DRAWING
IF NOT ONE INCH ON THIS SHEET, ADJUST SCALES ACCORDINGLY.

CITY OF ALBUQUERQUE PUBLIC WORKS DEPARTMENT ENGINEERING DIVISION				
TITLE: CANADA PUMP STATION UPGRADES ONE-LINE DIAGRAM				
APPROVALS	ENGINEER	DATE	APPROVALS	ENGINEER
City Engineer			Liquid Waste	
A.C.E.-Design			Traffic	
A.C.E.-Hydrology			Water	
DRAWING NO. 1		MAP NO. F-23		SHEET 5 OF 6

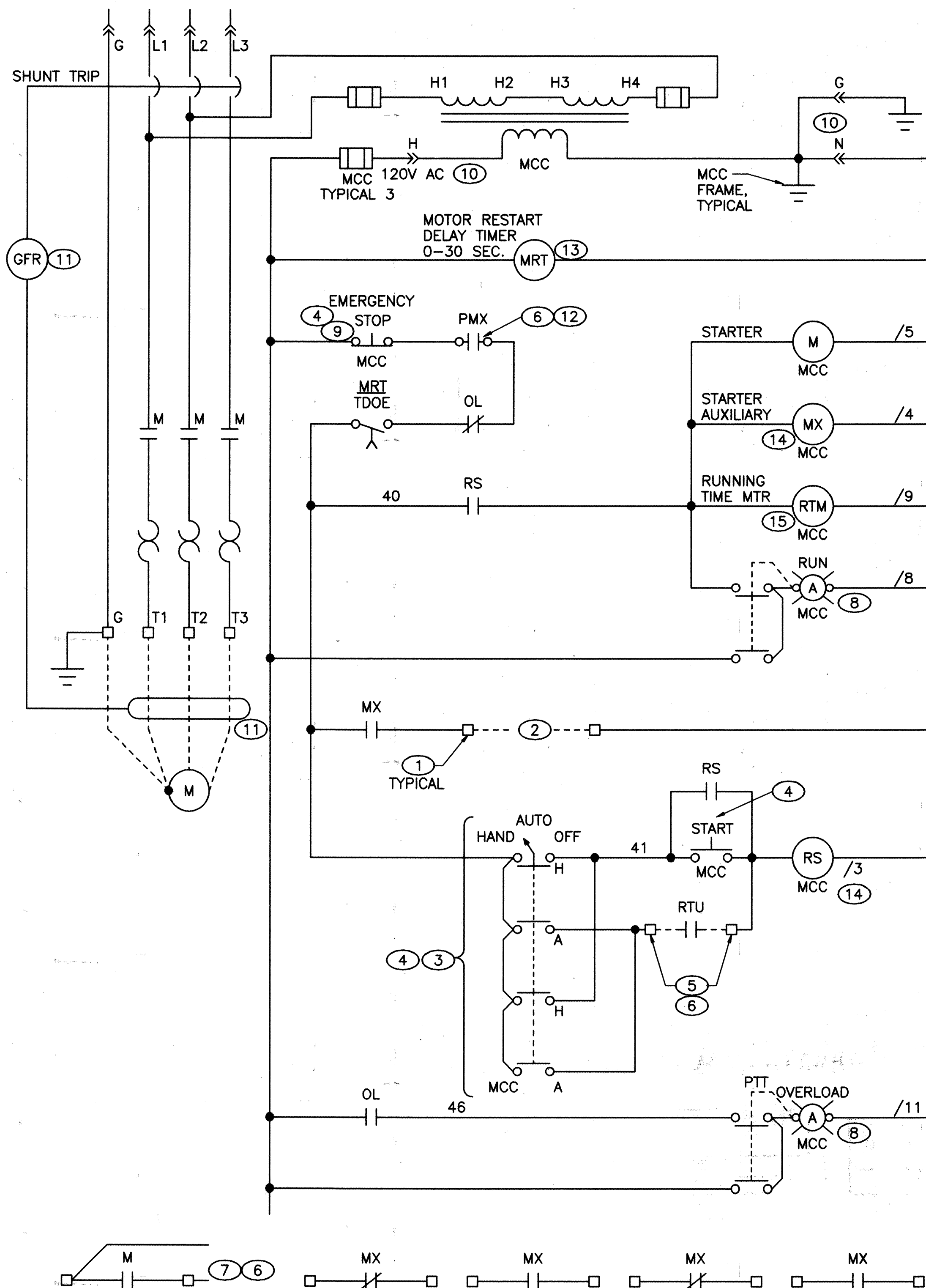
ALL EXISTING EXCEPT AS REQUIRED BY ELLIPTICAL O NOTES.





BOOSTER PUMP NO. 4 AND 5 SCHEMATIC (17) (23)

N.T.S.



BOOSTER PUMP NO. 2 AND 3 SCHEMATIC (16)

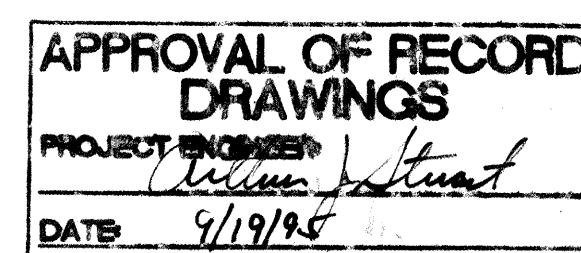
N.T.S.

NOTES

1. INSTALL TERMINAL BOARD IN MCC.
2. CONTACT IS FOR FUTURE USE.
3. CONTACTS SHALL OVERLAP BETWEEN HAND AND AUTO POSITIONS WHEN SWITCHING FROM HAND TO AUTO SO A BUMPLESS CHANGE FROM HAND TO AUTO MAY BE DONE. SHOW COMPLETE CONTACT DEVELOPMENT ON SUBMITTAL DRAWINGS. DO NOT CHANGE ORDER OF POSITIONS.
4. FULL-SIZE, HEAVY DUTY OIL-TIGHT INDUSTRIAL CONTROL SWITCH.
5. RUN COMMAND CONTACT FROM RTU IS EXISTING.
6. FOR PUMP 2: DISCONNECT AT BOTH ENDS; PULL CONDUCTORS OUT; INSTALL NEW CONDUCTORS IN EXISTING CONDUIT AND THEN CONNECT. FOR PUMP 3: TEMPORARILY DISCONNECT AT MCC, THEN CONNECT TO NEW PUMP 3 CONTROLS.
7. MOTOR RUNNING INPUT AT RTU IS EXISTING.
8. FULL-SIZE, TRANSFORMER TYPE, PUSH-TO-TEST HEAVY DUTY OIL-TIGHT INDUSTRIAL PILOT LAMP ASSEMBLY.
9. PUSH-TO-OPEN; PULL-TO-CLOSE.
10. PROVIDE CONTROL POWER SERVICE FEATURE: 120 V 15 A SPEC GRADE U GROUND MALE RECEPTACLE ON OUTPUT OF CONTROL POWER TRANSFORMER; MATCHING CORD CAP AND #16 SJU CORD FOR CONTROL POWER LOAD.
11. PROVIDE ZERO SEQUENCE TRANSFORMER AND GROUND FAULT RELAY IN STARTER CUBICLE. MATCH EXISTING EQUIPMENT IN EXISTING PUMP 3 AND 4 STARTER CUBICLES. SHOW COMPLETE CONNECTIONS ON SUBMITTALS. NOTE: NOT SHOWN ON THE ONE-LINE DIAGRAM.
12. RELAY PRX IS EXISTING IN METERING CUBICLE OF MCC-A.
13. PNEUMATIC TIME DELAY ON ENERGIZE RELAY: AGASTAT 7012AD.
14. CONTROL RELAY: 600 VOLT RATED WITH NEMA A600 INTERCHANGEABLE CONTACTS; 120 VAC COIL. WESTINGHOUSE AR OR ENGINEER APPROVED EQUIVALENT.
15. ZERO TO 99999.9 HOURS NON-RESET RUNNING TIME METER.
16. EXCEPT WHERE NOTED AS EXISTING, EQUIPMENT IS NEW. MOUNT CIRCUIT BREAKER AND GROUND FAULT SYSTEM, CONTROL POWER TRANSFORMER AND FUSES, CONTROL POWER SERVICE FEATURE, AND STARTER IN ONE CUBICLE. MOUNT CONTROL SWITCHES AND PILOT LIGHTS THROUGH OR ON THE DOOR OF THE SAME CUBICLE. MOUNT RELAYS IN A SEPARATE CUBICLE. MOUNT RTM THROUGH THE DOOR OF EITHER CUBICLE. IF PROPOSED BY MANUFACTURER, ALL COMPONENTS MAY BE MOUNTED IN A SINGLE CUBICLE.
17. CONNECTIONS TO VALVE SOLENOID VALVES AND LIMIT SWITCHES ARE EXISTING, BUT CONDUCTORS MAY NOT REACH NEW STARTERS. REMOVE CONDUCTORS AND REPLACE WITH NEW #14 THAT ARE LONG ENOUGH FOR NEW STARTER.
18. PUMP CONTROL VALVE OPENS WHEN SOLENOID IS ENERGIZED.
19. LIMIT SWITCH OF PUMP CONTROL VALVE. CONTACT OPENS AS VALVE APPROACHES FULLY CLOSED.
20. VALVE MALFUNCTION TIMER (VMT): AGASTAT 7014AF.
21. CONNECTIONS TO RTU ARE EXISTING BUT CONDUCTORS MAY NOT REACH NEW STARTERS. REMOVE AND REPLACE.
22. VALVE MALFUNCTION ALARM AT RTU IS EXISTING.
23. EXCEPT WHERE NOTED AS EXISTING, EQUIPMENT IS NEW. MOUNT ALL CONTROLS AT THE RVSS STARTER ENCLOSURE.

CONNECTION INFORMATION:

1. WHERE WIRE IS CONNECTED TO A TB POINT, WIRE NUMBER IS TB NUMBER. OTHER WIRE NUMBERS (WHICH START AT 40) ARE SHOWN ON THE SCHEMATIC. ASSIGN BALANCE AS NEEDED.
2. STROKE CONNECTIONS (/1, /2, /3, ETC.) ARE USED TO DENOTE SEQUENCE OF CONNECTIONS MADE. ORDER ON THIS DRAWING IS PURELY ARBITRARY. SHOW CORRECT ORDER ON SUBMITTALS. STROKE CONNECTION (/X) UNDERLINED IS LAST CONNECTION. ONLY WIRES X2 AND 40 ARE ILLUSTRATED. SHOW ALL CONNECTIONS ON SUBMITTALS. OTHER DIAGRAM METHODS ARE ACCEPTABLE.
3. MEET WITH ENGINEER AND CITY IN FIELD TO DETERMINE ASSIGNMENT OF TERMINAL BOARD NUMBERS.



RECORD DRAWINGS

Revisions Drawn by *M. Brown* Date *9-18-95*

THESE RECORD DRAWINGS HAVE BEEN PREPARED, IN PART, ON THE BASIS OF INFORMATION COMPILED BY OTHERS. THEY ARE NOT INTENDED TO REPRESENT IN DETAIL THE EXACT LOCATION, TYPE OF COMPONENT NOR MANNER OF CONSTRUCTION. THE ENGINEER WILL NOT BE RESPONSIBLE FOR ANY ERRORS OR OMISSIONS WHICH HAVE BEEN INCORPORATED INTO THE RECORD DRAWINGS.

ALL NEW EXCEPT
SHOWN AS EXISTING BY
ELLIPTICAL ○ NOTES.



MOLZEN-CORBIN & ASSOCIATES

VERIFY SCALES
BAR IS ONE INCH ON ORIGINAL DRAWING
IF NOT ONE INCH ON THIS SHEET, ADJUST SCALES ACCORDINGLY.

CITY OF ALBUQUERQUE PUBLIC WORKS DEPARTMENT ENGINEERING DIVISION					
TITLE: CANADA PUMP STATION UPGRADE ELECTRICAL DETAILS					
APPROVALS	ENGINEER	DATE	APPROVALS	ENGINEER	DATE
City Engineer			Liquid Waste		
A.C.E.-Design			Traffic		
A.C.E.-Hydrology			Water		
DRAWING NO.		MAP NO. F-23		SHEET 6 OF 6	