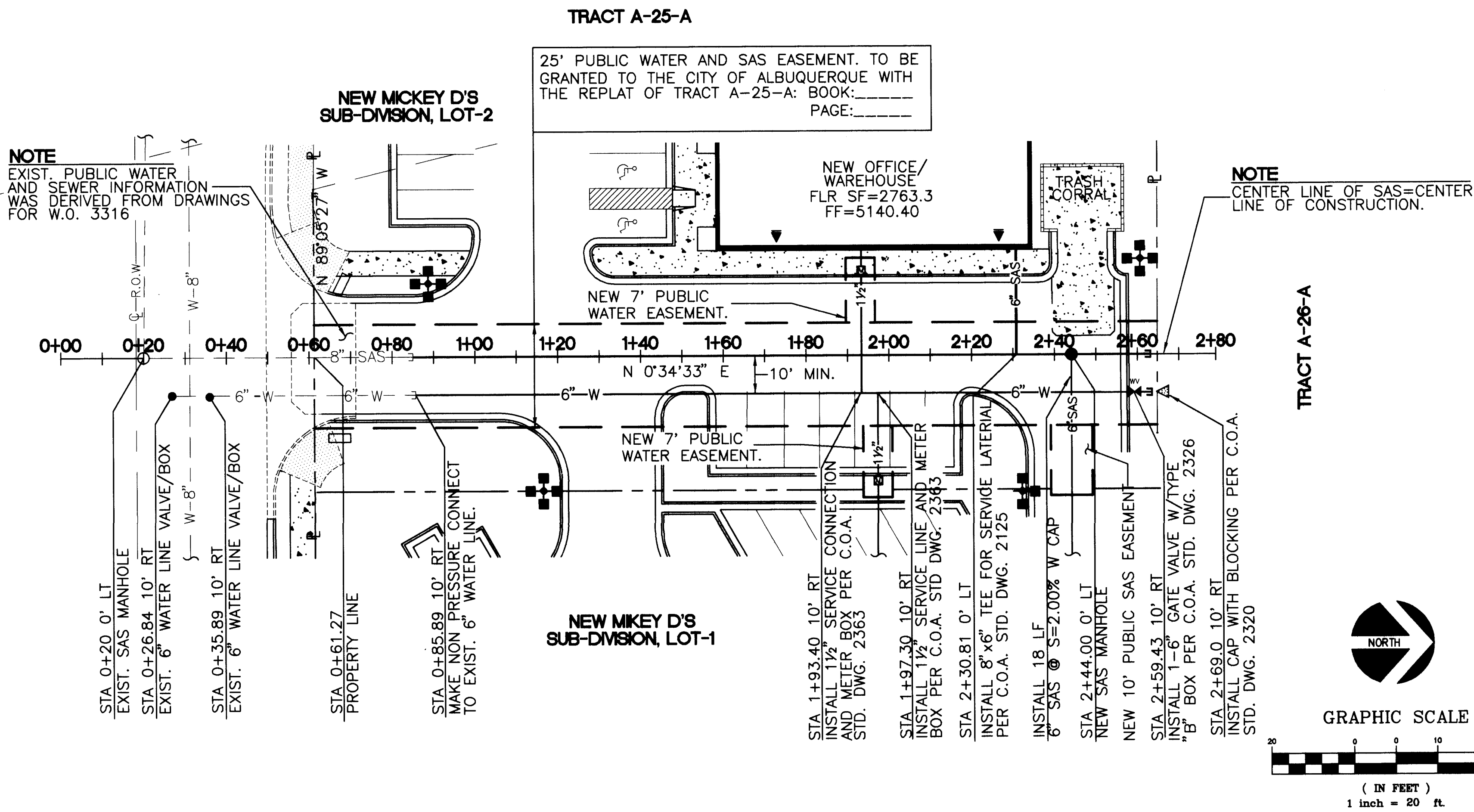
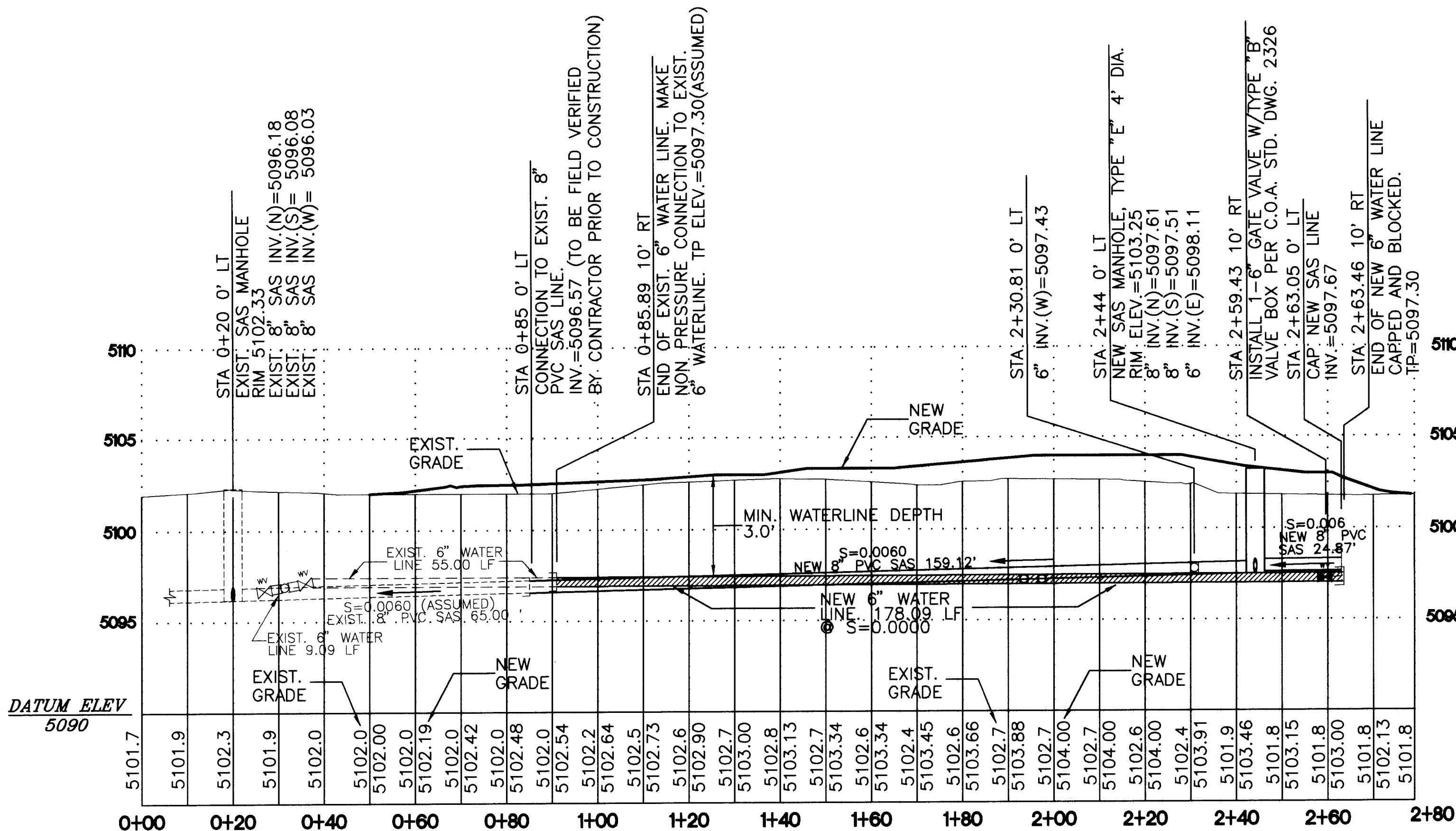


QUAIL ROAD NW

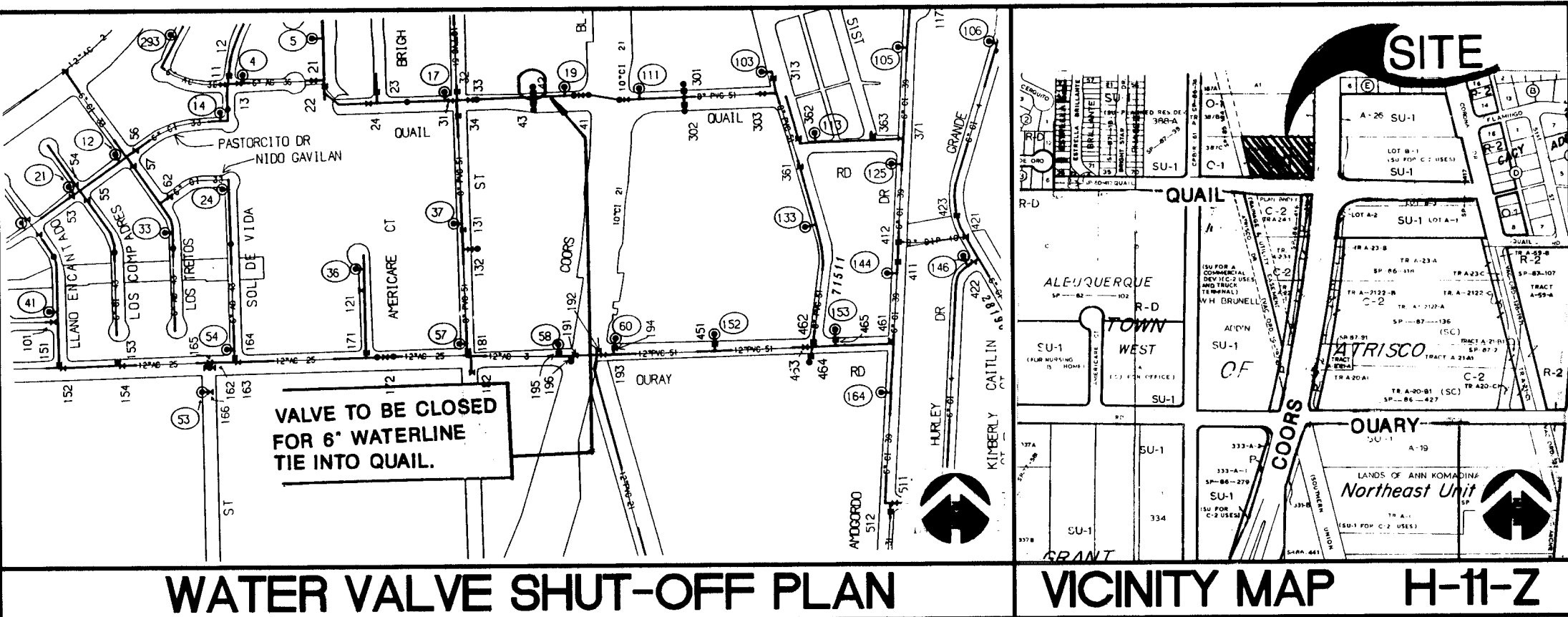


SANITARY SEWER AND WATERLINE PLAN VIEW



SANITARY SEWER AND WATERLINE PROFILE 0+00 - 280+00

26 4801.900194



GENERAL NOTES

- ALL CONSTRUCTION WITHIN CITY R.O.W. OR EASEMENTS MUST BE DONE FROM WORK ORDER DOCUMENTS APPROVED BY THE CITY OF ALBUQUERQUE.
- THE CONTRACTOR SHALL NOTIFY THE ENGINEER NOT LESS THAN SEVEN (7) DAYS PRIOR TO STARTING WORK IN ORDER THAT THE ENGINEER MAY TAKE NECESSARY MEASURES TO INSURE THE PRESERVATION OF SURVEY MONUMENTS. THE CONTRACTOR SHALL NOT DISTURB PERMANENT SURVEY MONUMENTS WITHOUT THE CONSENT OF THE ENGINEER AND SHALL NOTIFY THE ENGINEER AND BEAR THE EXPENSE OF REPLACING ANY THAT HAVE BEEN DISTURBED WITHOUT PERMISSION. REPLACEMENT SHALL BE DONE ONLY BY THE ENGINEER. WHEN A CHANGE IS MADE IN THE FINISHED ELEVATION OF THE PAVEMENT OF ANY ROADWAY IN WHICH A PERMANENT SURVEY MONUMENT IS LOCATED, THE CONTRACTOR SHALL, AT HIS OWN EXPENSE, OBTAIN THE SERVICES OF A REGISTERED SURVEYOR TO ADJUST THE MONUMENT COVER TO THE NEW GRADE UNLESS OTHERWISE DIRECTED.
- WATERING, AS REQUIRED FOR CONSTRUCTION AND DUST CONTROL, SHALL BE CONSIDERED INCIDENTAL TO CONSTRUCTION AND NO MEASUREMENT OR PAYMENT SHALL BE MADE THEREFOR. CONSTRUCTION AREAS SHALL BE WATERED FOR DUST CONTROL IN COMPLIANCE WITH GOVERNMENT ORDINANCES. THE CONTRACTOR SHALL BE RESPONSIBLE FOR LOCATING AND SUPPLYING WATER AS REQUIRED.
- IF ANY UTILITY LINES, PIPELINES, OR UNDERGROUND UTILITY LINES ARE SHOWN ON THESE DRAWINGS, THEY ARE SHOWN IN AN APPROXIMATE MANNER ONLY, AND SUCH LINES MAY EXIST WHERE NONE ARE SHOWN. IF ANY SUCH EXISTING LINES ARE SHOWN, THE LOCATION IS BASED UPON INFORMATION PROVIDED TO THE ENGINEER BY OTHERS, AND THE INFORMATION MAY BE INCOMPLETE, OR MAY BE OBSOLETE BY THE TIME CONSTRUCTION COMMENCES. THE ENGINEER HAS UNDER TAKEN NO FIELD VERIFICATION OF THE EXISTENCE, LOCATION, DEPTH, SIZE, OR TYPE OF EXISTING UTILITY LINES, PIPELINES, OR UNDERGROUND UTILITY LINES. THE CONTRACTOR SHALL INFORM HIMSELF OF THE LOCATION OF ANY UTILITY LINE, PIPELINE, OR UNDERGROUND UTILITY LINE IN OR NEAR THE AREA OF THE WORK IN ADVANCE OF, AND DURING EXCAVATION WORK. THE CONTRACTOR IS FULLY RESPONSIBLE FOR ANY AND ALL DAMAGE CAUSED BY HIS FAILURE TO LOCATE, IDENTIFY AND PRESERVE ANY AND ALL EXISTING UTILITIES, PIPELINES, AND UNDERGROUND UTILITY LINES, AND SHALL BEAR ALL COSTS TO REPAIR DAMAGES CAUSED BY HIMSELF. IN PLANNING AND CONDUCTING EXCAVATION, THE CONTRACTOR SHALL COMPLY WITH STATE STATUTES, NONDISCRIMINATORY LOCAL ORDINANCES, RULES AND REGULATIONS, IF ANY, PERTAINING TO THE LOCATION OF THESE LINES AND FACILITIES.
- CONTRACTOR IS TO EXERCISE DUE CARE TO AVOID DISTURBING ANY EXISTING UNDERGROUND UTILITIES. IT SHALL BE THE CONTRACTOR'S RESPONSIBILITY TO COORDINATE ANY POTENTIAL DISRUPTIONS IN UTILITY SERVICE WITH THE UTILITY COMPANIES AFFECTED AT LEAST 24 HOURS PRIOR TO THE DISRUPTION.
- THE CONTRACTOR SHALL EXPOSE AND VERIFY INVERT ELEVATIONS OF RELEVANT SANITARY SEWER LINES BEFORE SETTING ANY NEW INVERTS. SHOULD INVERTS DIFFER 0.20 OF A FOOT FROM THOSE SHOWN ON THE PLANS, THE ENGINEER SHALL BE NOTIFIED TO DETERMINE ANY RESULTING RESULTING CHANGES IN DESIGN.
- THE CONTRACTOR SHALL SECURE A "TOP SOIL DISTURBANCE PERMIT" FROM THE CITY OF ALBUQUERQUE ENVIRONMENTAL HEALTH DIVISION PRIOR TO BEGINNING CONSTRUCTION.
- THE CONTRACTOR SHALL ENSURE THAT NO SOIL ERODES FROM THE SITE ONTO OTHER PROPERTY BY CONSTRUCTING TEMPORARY EROSION CONTROL BERMES AT THE PROPERTY LINES AND WETTING THE SOIL TO KEEP IT FROM BLOWING.
- THE CONTRACTOR SHALL PROMPTLY REMOVE ANY MATERIAL EXCAVATED WITHIN THE PUBLIC RIGHT-OF-WAY TO KEEP IT FROM WASHING DOWN THE STREET.
- THE CONTRACTOR SHALL CONFORM TO ALL CITY, COUNTY, STATE, AND FEDERAL DUST AND EROSION CONTROL REGULATIONS. THE CONTRACTOR SHALL PREPARE AND OBTAIN ANY NECESSARY DUST OR EROSION CONTROL PERMITS FROM REGULATORY AGENCIES.
- THE CONTRACTOR IS RESPONSIBLE FOR OBTAINING ALL PERMITS TO CONSTRUCT FACILITIES WITHIN CITY RIGHT-OF-WAY.
- ALL SIGNS, BARRICADES, CHANNELIZATION DEVICES, SIGN FRAMES AND ERECTION OF SUCH DEVICES SHALL CONFORM TO THE REQUIREMENTS OF THE NEW MEXICO MANUAL OF UNIFORM TRAFFIC CONTROL DEVICES FOR STREETS AND HIGHWAYS LATEST EDITION. ALL ADVANCE WARNING SIGNS SHALL BE EQUIPPED WITH TYPE A FLASHING WARNING LIGHTS; ALL CHANNELIZATION DEVICES SHALL BE EQUIPPED WITH TYPE C STEADY BURN WARNING LIGHTS.
- ELECTRONIC MARKER DISCS SHALL BE PLACED IN ACCORDANCE WITH SECTION 170 OF THE CITY OF ALBUQUERQUE, STANDARD SPECIFICATIONS, PUBLIC WORKS CONSTRUCTION.
- CONTRACTOR SHALL RECORD DATA ON ALL UTILITY LINES AND ACCESSORIES AS REQUIRED BY THE CITY OF ALBUQUERQUE FOR THE PREPARATION OF "AS CONSTRUCTED" DRAWINGS. CONTRACTOR SHALL NOT COVER UTILITY LINES AND ACCESSORIES UNTIL ALL DATA HAS BEEN RECORDED.
- CONTRACTOR SHALL COORDINATE WITH WATER SYSTEMS DIVISION (857-8200) THREE WORKING DAYS IN ADVANCE OF ANY WORK THAT MAY AFFECT EXISTING PUBLIC WATER OR LIQUID WASTE LINE MAIN UTILITIES.
- EXIST. VALVES TO BE OPERATED BY CITY PERSONNEL ONLY. CONTRACTOR SHALL CONTACT THE WATER SYSTEMS DIVISION (857-8200) THREE DAYS PRIOR TO NEEDING VALVES TURNED ON OR OFF.
- ALL UTILITIES AND UTILITY SERVICE LINES SHALL BE INSTALLED PRIOR TO PAVING.
- BACKFILL COMPACTION SHALL BE ACCORDING TO ARTERIAL STREET USE.
- ALL SLOPES ARE IN FEET/FOOT UNLESS OTHERWISE NOTED.
- ALL WORK DETAILED ON THESE PLANS TO BE PERFORMED, EXCEPT AS OTHERWISE STATED OR PROVIDED HERE ON, SHALL BE CONSTRUCTED IN ACCORDANCE WITH CITY OF ALBUQUERQUE STANDARD SPECIFICATIONS FOR PUBLIC WORKS CONSTRUCTION, LATEST EDITION.

LEGAL DESCRIPTION

TRACT A-25-A, NORTHEAST UNIT, TOWN OF ATRISCO GRANT, BEING REPLATED AS MICKEY D'S SUBDIVISION UNIT 1, LOTS 1 AND 2.

LEGEND

EXIST. CURB AND GUTTER	=====
NEW CURB AND GUTTER	=====
EXIST. SANITARY SEWER	--- SAS ---
NEW SANITARY SEWER	--- SAS ---
EXIST. WATER LINE	--- W ---
NEW WATER LINE	--- W ---
EXIST. MANHOLE	○
NEW MANHOLE	●
NEW BLDG	=====
EASEMENT LINE	=====
WATER METER	⊠
EXIST. WATER VALVE	⊠
NEW WATER VALVE	⊠
NEW WATER SERVICE TAP	⊠
NEW SAS SERVICE TAP	⊠

APPROVAL OF AS BUILT DRAWINGS
CHIEF CONSTRUCTION ENGINEER
R. W. Kane
DATE 8-30-94

CHAVEZ-GRIEVE CONSULTING ENGINEERS, INC.
2835 Jefferson Street, N.E., Albuquerque, New Mexico 87109
Phone (505) 344-4080 Fax (505) 343-8759
The Engineering Firm of Choice

APPROVED FOR CONSTRUCTION

REMARKS
DESIGN
DESIGNED: J. P. KELLEY
DRAWN BY: R. F. CASAS
CHECKED BY: L. READ

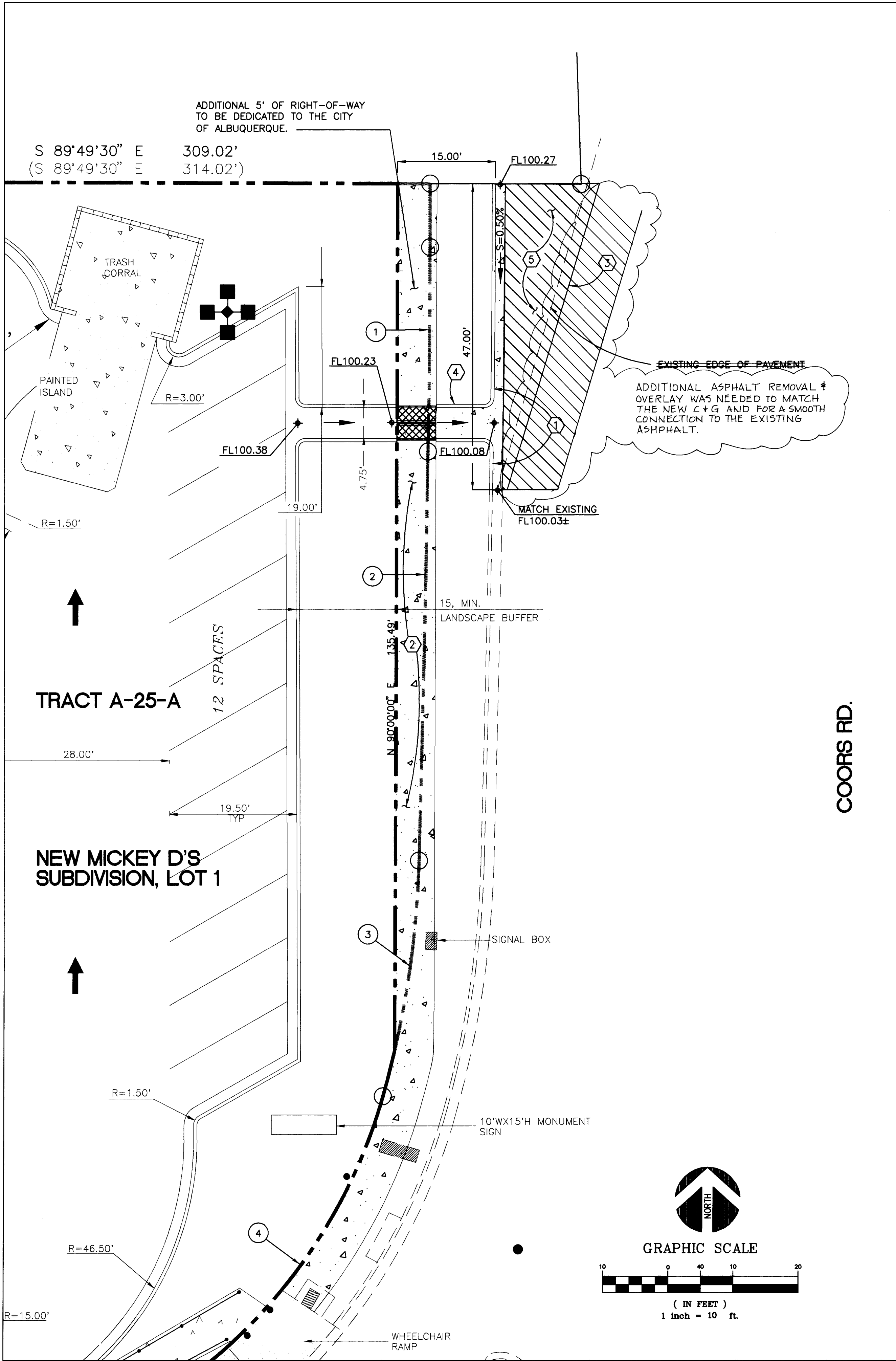
CITY OF ALBUQUERQUE
PUBLIC WORKS DEPARTMENT
ENGINEERING GROUP

TITLE: MCDONALDS COORS AND QUAIL
SANITARY SEWER AND WATER LINE

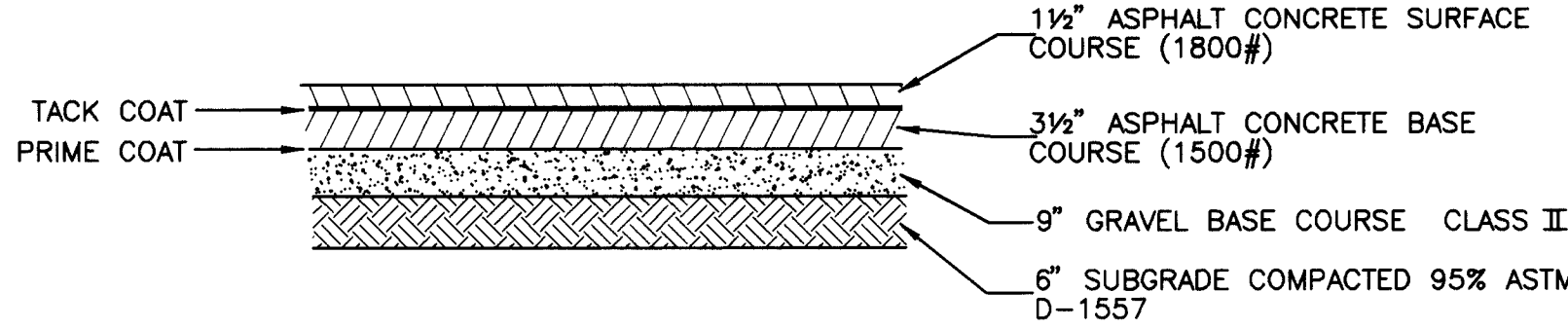
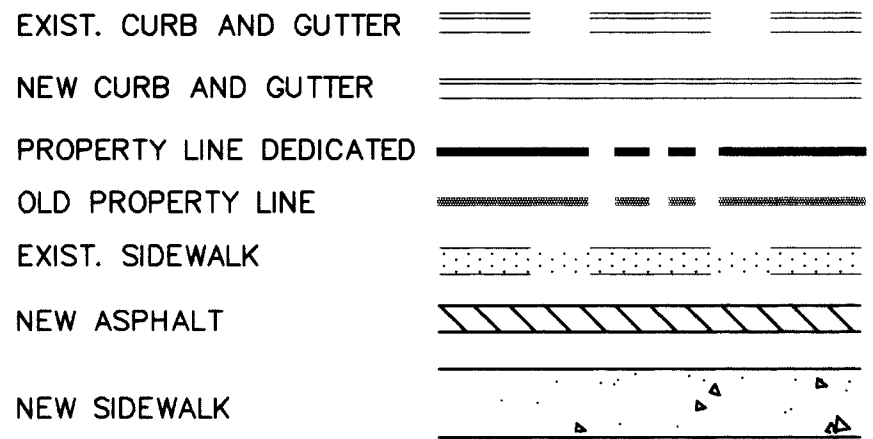
APPROVALS	ENGINEER	DATE	APPROVALS	ENGINEER	DATE
D.R.C. Chair	B. J. Anthony	12-14-93	Water	R. W. Kane	11-18-93
Trans. Dev.	W. J. Dwyer	11-25-93	Wastewater	R. W. Kane	11-18-93
Hydrology	W. J. Dwyer	11-25-93			

DRAWING NO. 4801.90 MAP NO. H-11-Z SHEET 1 OF 2

SCANNED BY
BY LASON



LEGEND



ARTERIAL PAVEMENT SECTION

N.T.S.

KEYED NOTES

1. INSTALL 47 LF STD. CURB AND GUTTER PER C.O.A. STD. DWG. 2415.
2. INSTALL 170 LF 6' SIDEWALK PER C.O.A. STD. DWG. 2430.
3. NEATLY SAWCUT AND REMOVE 1' WIDTH OF EXISTING PAVEMENT APPLY TACK COAT TO SAWED EDGE PRIOR TO NEW PAVEMENT INSTALLATION.
4. INSTALL 8 LF DRAINAGE CHANNEL AND 6 LF DOUBLE 24" SIDEWALK CULVERT PER C.O.A. STD. DWG. 2236.
5. INSTALL 35 SY OF ARTERIAL PAVEMENT PER SECTION, THIS SHEET, AND PER NOTES ON C.O.A. STD. DWG. 2408.

CURVED DATA TABLE

CURVE NO.	RADIUS	ARC	DELTA	CHORD	CHORD BEARING
1.	2411.39	31.46	00°44'51"	31.46	S00°38'32"W
2.	5646.21	62.93	00°38'19"	62.93	S01°38'32"W
3.	150.00	36.75	14°02'19"	36.66	S08°35'25"W
4.	82.00	91.31	63°47'53"	86.66	S47°30'31"W
5.	250.00	47.11	10°47'52"	47.04	S84°48'24"W

PAVING GENERAL NOTES

1. WHEN ABUTTING NEW PAVEMENT TO EXISTING, CUT BACK EXISTING PAVEMENT TO A NEAT, STRAIGHT LINE AS REQUIRED TO REMOVE ANY BROKEN OR CRACKED PAVEMENT, AND MATCH NEW PAVING TO EXISTING.
2. WHEN CONSTRUCTION UNDER THIS PROJECT CONNECTS TO EXISTING IMPROVEMENTS, THE CONTRACTOR SHALL PROVIDE AN EASY-RIDING CONNECTION.
3. SUBGRADE PREPARATION UNDER ALL NEW SIDEWALKS, CURBS AND GUTTERS, VALLEY GUTTERS, AND CONCRETE FILLETS SHALL BE INCIDENTAL TO THE COMPLETION OF THE SURFACE IMPROVEMENT. NO SEPARATE PAYMENT WILL BE MADE THEREFOR.
4. AN EXCAVATION/CONSTRUCTION PERMIT WILL BE REQUIRED BEFORE BEGINNING ANY WORK WITHIN CITY R.O.W. AN APPROVED COPY OF THESE PLANS MUST BE SUBMITTED AT THE TIME OF APPLICATION FOR THIS PERMIT.
5. THREE WORKING DAYS PRIOR TO BEGINNING CONSTRUCTION, THE CONTRACTOR SHALL SUBMIT TO THE CONSTRUCTION COORDINATION DIVISION A DETAILED CONSTRUCTION SCHEDULE. TWO WORKING DAYS PRIOR TO CONSTRUCTION, THE CONTRACTOR SHALL OBTAIN A BARRICADE-ING PERMIT FROM THE CONSTRUCTION COORDINATION DIVISION. CONTRACTOR SHALL NOTIFY BARRICADE ENGINEER (765-2551) PRIOR TO OCCUPYING PUBLIC R.O.W. SEE SECTION 19 OF THE SPECIFICATIONS. ALL STREET STRIPING ALTERED OR DESTROYED SHALL BE REPLACED IN KIND BY CONTRACTOR TO LOCATION AND IN KIND AS EXISTING OR AS INDICATED BY THIS PLAN SET.
6. TACK COAT REQUIREMENTS SHALL BE DETERMINED BY THE CITY ENGINEER.

CHAVEZ-GRIEVE CONSULTING ENGINEERS, INC.
5638 JEFFERSON STREET N.E., ALBUQUERQUE, NEW MEXICO 87109
PHONE (505) 344-4080 FAX (505) 343-8799
THE ENGINEERING FIRM OF CHOICE

APPROVED FOR CONSTRUCTION
Ruando B. Rofal 3/2/94
CITY ENGINEER DATE

CITY OF ALBUQUERQUE
PUBLIC WORKS DEPARTMENT
ENGINEERING GROUP

TITLE: MCDONALDS COORS AND QUAIL
RIGHT-OF-WAY CONSTRUCTION

APPROVALS	ENGINEER	DATE	APPROVALS	ENGINEER	DATE
D.R.C. CHAIR	<i>B.G. Sanchez</i>	12-14-93	WATER	<i>R.W. Kano</i>	11-22-93
TRANS. DEV.	<i>W.H. C.H.D.</i>	11-26-93	WASTEWATER	<i>R.W. Kano</i>	11-22-93
HYDROLOGY					

DRAWING NO. 4801.90 MAP NO. H-11-Z SHEET 2 OF 2

SCANNED BY
BY LASON