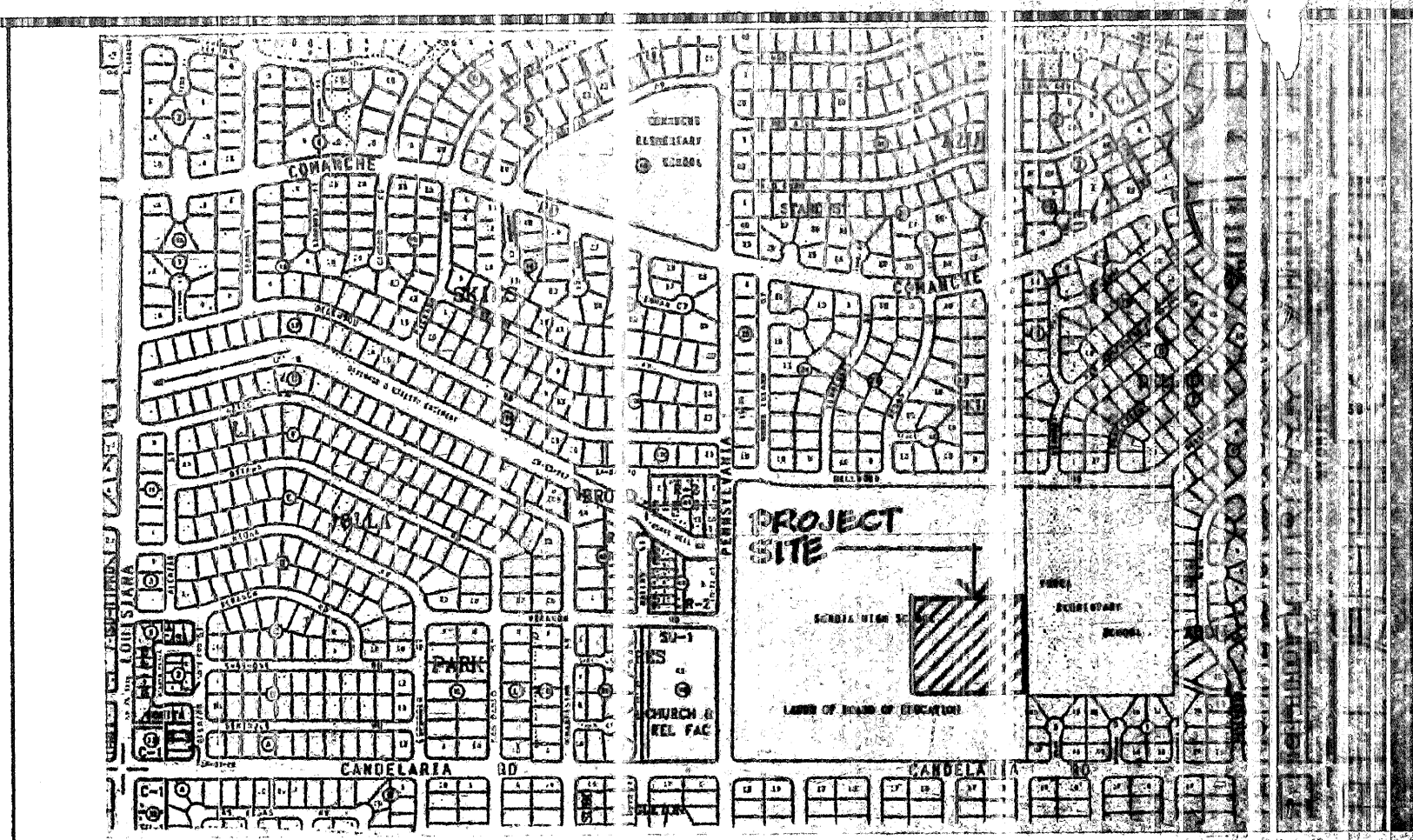


CONSTRUCTION DOCUMENTS
PROJECT NO. 4898.91

SANDIA HIGH SCHOOL
TRACK IMPROVEMENTS
7801 CANDELARIA ROAD NE

INDEX OF DRAWINGS

TITLE	SHEET NO.
COVER SHEET	1 OF 7
EXISTING CONDITIONS	2 OF 7
DRAINAGE PLAN	3 OF 7
DEMOLITION, CONSTRUCTION AND GRADING PLAN	4 OF 7
TRACK AND FIELD EVENT CONSTRUCTION DETAILS	5 OF 7
IRRIGATION AND PLANTING PLAN	6 OF 7
IRRIGATION AND PLANTING DETAILS, NOTES, AND SCHEDULES	7 OF 7



VICINITY MAP MAP #G-19-Z

GENERAL NOTES

- ALL WORK DETAILED ON THESE PLANS TO BE PERFORMED UNDER CONTRACT SHALL, EXCEPT AS OTHERWISE NOTED OR PROVIDED HEREIN, BE CONSTRUCTED IN ACCORDANCE WITH THE CONTRACT DOCUMENTS TITLED AND SHOWN ON THIS SHEET.
- PRIOR TO CONSTRUCTION, THE CONTRACTOR SHALL CHECK ALL DIMENSIONS, HORIZONTAL AND VERTICAL, AND SHALL EXCAVATE AND VERIFY THE HORIZONTAL AND VERTICAL LOCATIONS OF ALL OBSTRUCTIONS. SHOULD A CONFLICT EXIST, THE CONTRACTOR SHALL NOTIFY THE ENGINEER PRIOR TO CONSTRUCTION SO THAT CONFLICT CAN BE RESOLVED WITH THE MINIMUM AMOUNT OF DELAY.
- ALL WORK SHALL BE IN ACCORDANCE WITH CITY OF ALBUQUERQUE STANDARD SPECIFICATIONS, 1986, OR ADDITION WITH LATEST UPDATES OR PER ATTACHED SPECIFICATIONS.
- THREE WORKING DAYS PRIOR TO BEGINNING CONSTRUCTION CONTRACTOR SHALL SUBMIT TO THE CONSTRUCTION COORDINATION DIVISION A DETAILED CONSTRUCTION SCHEDULE.
- THE CONTRACTOR SHALL BE RESPONSIBLE FOR OBTAINING PERMITS FOR TRAFFIC ALTERATIONS DURING CONSTRUCTION. CONTACT CONSTRUCTION COORDINATION AT 768-2351.
- THE CONTRACTOR SHALL CONTACT NEW MEXICO ONE CALL SYSTEM PHONE: 260-1990, TO LOCATE UNDERGROUND UTILITIES 2 WORK DAYS PRIOR TO BEGINNING EXCAVATION.
- THE CONTRACTOR SHALL CONTAIN AND PROTECT ALL EXISTING UTILITIES, UNLESS NOTED OTHERWISE. ANY DAMAGE TO EXISTING UTILITIES SHALL BE REPAIRED AT THE CONTRACTOR'S EXPENSE.
- THE CONTRACTOR SHALL CONTACT TRAFFIC ENGINEERING OPERATIONS 764-1599 FOR REMOVAL AND REPLACEMENT OF TRAFFIC SIGNS.
- ALL EXISTING IMPROVEMENTS ARE TO REMAIN, UNLESS SPECIFICALLY NOTED TO BE REMOVED. CONTRACTOR SHALL REPAIR ANY CONTRACTOR-CAUSED DAMAGE, AS DETERMINED BY THE ENGINEER TO EXISTING IMPROVEMENTS TO THE SATISFACTION OF THE OWNER AT THE CONTRACTOR'S EXPENSE.
- ALL REFERENCES TO COMPACTED BACKFILL OR COMPACTED SUBGRADE SHALL MEAN SOIL COMPACTED TO 95% OF MAXIMUM DENSITY AS DETERMINED BY ASTM D-1557 UNLESS OTHERWISE NOTED.
- CONTRACTOR SHALL NOTIFY THE ENGINEER NOT LESS THAN SEVEN (7) DAYS PRIOR TO STARTING WORK, IN ORDER THAT THE ENGINEER MAY TAKE NECESSARY MEASURES TO INSURE THE PRESERVATION OF SURVEY MONUMENTS. CONTRACTOR SHALL NOT DISTURB PERMANENT SURVEY MONUMENTS WITHOUT THE CONSENT OF THE ENGINEER AND SHALL NOTIFY THE ENGINEER AND BEAR THE EXPENSE OF REPLACING ANY THAT MAY BE DISTURBED WITHOUT PERMISSION. REPLACEMENT SHALL BE DONE ONLY BY THE ENGINEER. WHEN A CHANGE IS MADE IN THE FINISH ELEVATION OF THE PAVEMENT OF ANY ROADWAY IN WHICH A PERMANENT SURVEY MONUMENT IS LOCATED, CONTRACTOR SHALL, AT HIS OWN EXPENSE, ADJUST THE MONUMENT COVER TO NEW GRADE, UNLESS OTHERWISE SPECIFIED.
- THREE (3) WORKING DAYS PRIOR TO CONSTRUCTION THE CONTRACTOR SHALL SUBMIT TO THE CONSTRUCTION COORDINATION DIVISION A DETAILED CONSTRUCTION SCHEDULE. TWO (2) WORKING DAYS PRIOR TO CONSTRUCTION THE CONTRACTOR SHALL OBTAIN A BARRICADING PERMIT FROM THE CONSTRUCTION COORDINATION DIVISION. CONTRACTOR SHALL NOTIFY BARRICADE ENGINEER (768-2551) PRIOR TO OCCUPYING AN INTERSECTION. SEE SECTION 19 OF THE SPECIFICATIONS.
- ALL STREET STRIPING ALTERED OR DESTROYED SHALL BE REPLACED IN KIND BY CONTRACTOR TO LOCATION AND IN KIND AS EXISTING OR AS INDICATED BY THIS PLAN SET.

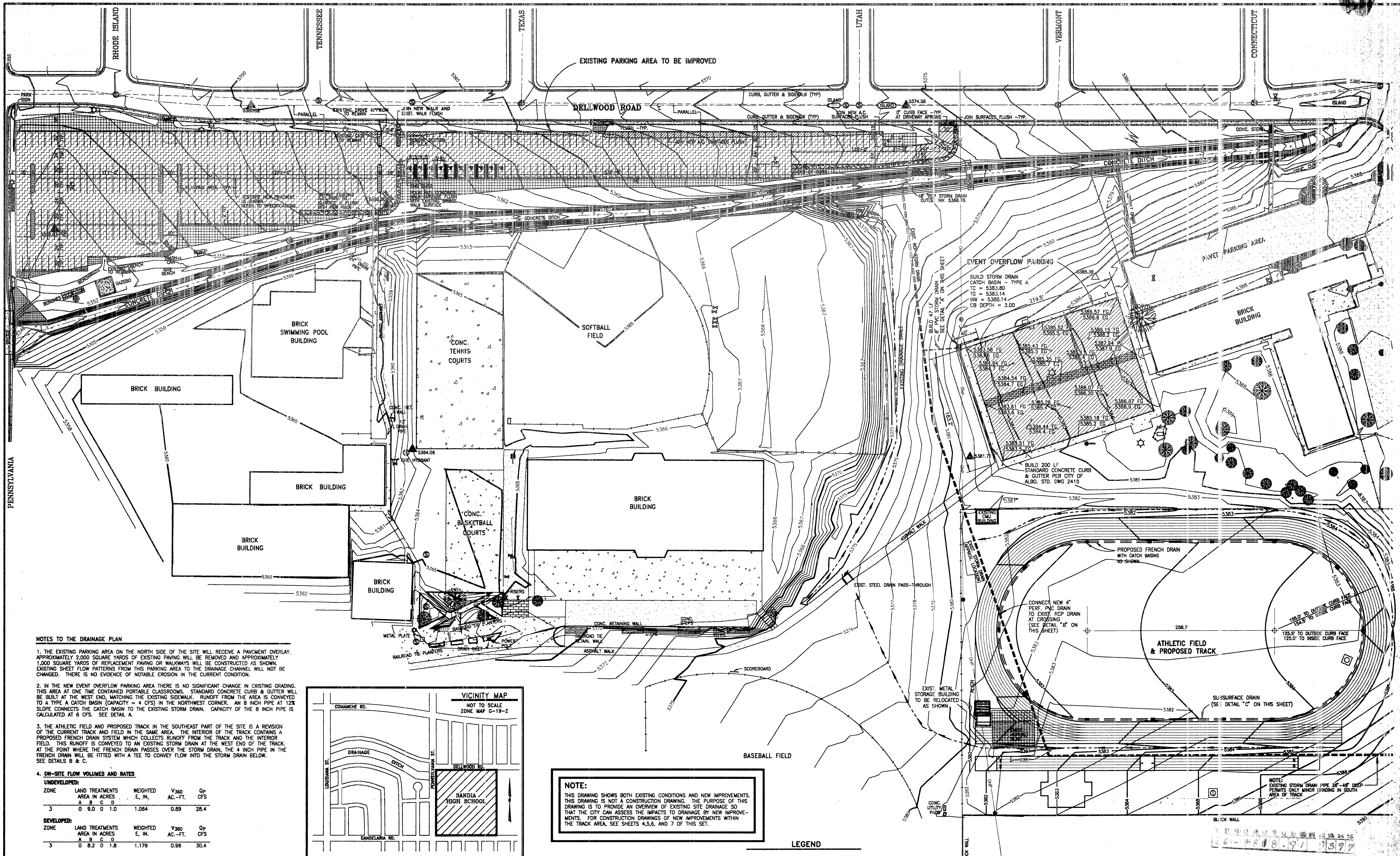
26-7818-11 0197

WALTER WEAVER INC.
LANDSCAPE ARCHITECTS / CIVIL ENGINEERS / PLANNERS / DESIGNERS
2600 1ST AVENUE NE, SUITE 100, ALBUQUERQUE, NM 87106-3000

APPROVAL OF AS BUILT DRAWINGS
CHIEF CONSTRUCTION ENGINEER
DATE 1-8-97

REV.	SHEETS	CITY ENGINEER	DATE	USER DEPARTMENT	DATE	USER DEPARTMENT	DATE
ENGINEERS STAMP & SIGNATURE	APPROVALS	ENGINEER	DATE	APPROVE FOR CONSTRUCTION			
	DRC Chairman	<i>B.G. Gooding</i>	6-1-95				
	Transportation						
	Water/Wastewater						
	Hydrology	<i>B. Madona</i>	6/1/95				
	Parks	<i>B. Madona</i>	6/2/95				
	Const. Mgmt.	<i>B. Madona</i>	6/2/95				
	City Project No.						

SET NUMBER: 4818.91



NOTES TO THE DRAINAGE PLAN

1. THE EXISTING PARKING AREA ON THE NORTH SIDE OF THE SITE WILL RECEIVE A PAVEMENT OVERLAY. APPROXIMATELY 2,000 SQUARE YARDS OF EXISTING PAVING WILL BE REMOVED AND APPROXIMATELY 1,000 SQUARE YARDS OF REPLACEMENT PAVING OR WALKWAYS WILL BE CONSTRUCTED AS SHOWN. EXISTING SHEET FLOW PATTERNS FROM THIS PARKING AREA TO THE DRAINAGE CHANNEL WILL NOT BE CHANGED. THERE IS NO EVIDENCE OF NOTABLE EROSION IN THE CURRENT CONDITION.

2. IN THE NEW EVENT OVERFLOW PARKING AREA THERE IS NO SIGNIFICANT CHANGE IN EXISTING GRADING. THIS AREA AT ONE TIME CONTAINED PORTABLE CLASSROOMS. STANDARD CONCRETE CURB & GUTTER WILL BE BUILT AT THE WEST END, MATCHING THE EXISTING SIDEWALK. RUNOFF FROM THE AREA IS CONVEYED TO A TYPE A CATCH BASIN (CAPACITY = 4 CFS) IN THE NORTHWEST CORNER. AN 8 INCH PIPE AT 12% SLOPE CONNECTS THE CATCH BASIN TO THE EXISTING STORM DRAIN. CAPACITY OF THE 8 INCH PIPE IS CALCULATED AT 6 CFS. SEE DETAIL A.

3. THE ATHLETIC FIELD AND PROPOSED TRACK IN THE SOUTHEAST PART OF THE SITE IS A REVISION OF THE CURRENT TRACK AND FIELD IN THE SAME AREA. THE INTERIOR OF THE TRACK CONTAINS A PROPOSED FRENCH DRAIN SYSTEM WHICH COLLECTS RUNOFF FROM THE TRACK AND THE INTERIOR FIELD. THIS RUNOFF IS CONVEYED TO AN EXISTING STORM DRAIN AT THE WEST END OF THE TRACK. AT THE POINT WHERE THE FRENCH DRAIN PASSES OVER THE STORM DRAIN, THE 4 INCH PIPE IN THE FRENCH DRAIN WILL BE FITTED WITH A TEE TO CONVEY FLOW INTO THE STORM DRAIN BELOW. SEE DETAILS B & C.

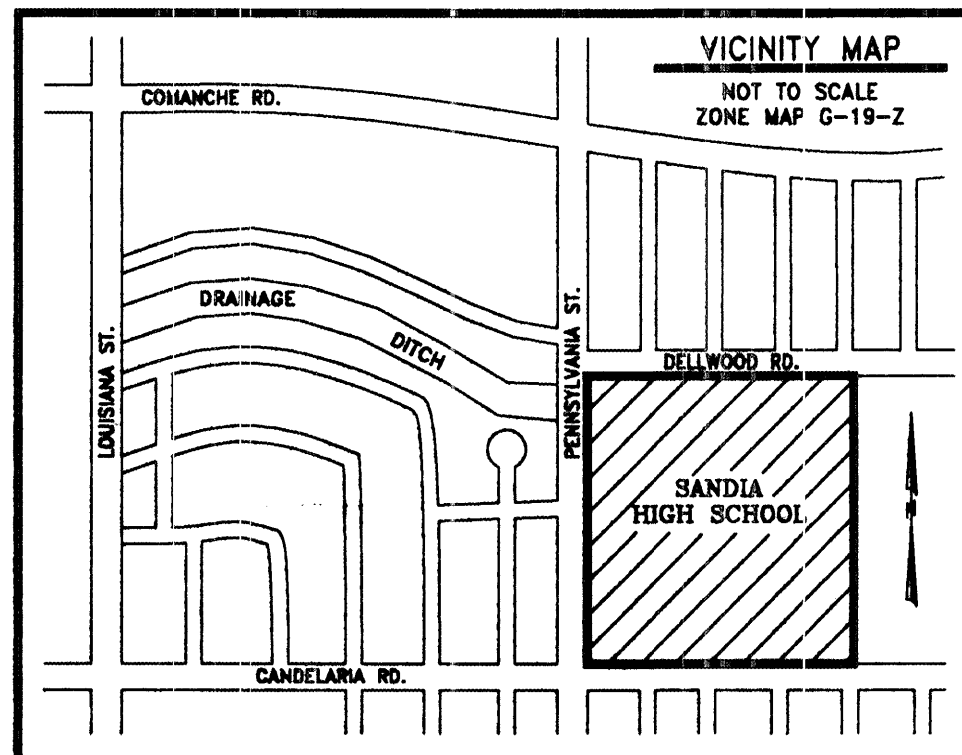
4. ON-SITE FLOW VOLUMES AND RATES

UNDEVELOPED:

ZONE	LAND TREATMENTS AREA IN ACRES				WEIGHTED E, IN.	V ₃₆₀ AC.-FT.	Q _p CFS
	A	B	C	D			
3	0	9.0	0	1.0	1.064	0.89	28.4

DEVELOPED:

ZONE	LAND TREATMENTS AREA IN ACRES				WEIGHTED E, IN.	V ₃₆₀ AC.-FT.	Q _p CFS
	A	B	C	D			
3	0	8.2	0	1.8	1.179	0.98	30.4

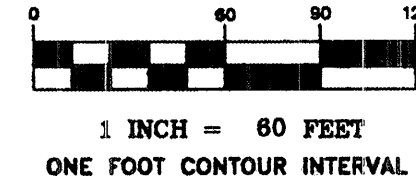


NOTE:

THIS DRAWING SHOWS BOTH EXISTING CONDITIONS AND NEW IMPROVEMENTS. THIS DRAWING IS NOT A CONSTRUCTION DRAWING. THE PURPOSE OF THIS DRAWING IS TO PROVIDE AN OVERVIEW OF EXISTING SITE DRAINAGE SO THAT THE CITY CAN ASSESS THE IMPACTS TO DRAINAGE BY NEW IMPROVEMENTS. FOR CONSTRUCTION DRAWINGS OF NEW IMPROVEMENTS WITHIN THE TRACK AREA, SEE SHEETS 4, 5, 6, AND 7 OF THIS SET.

LEGEND

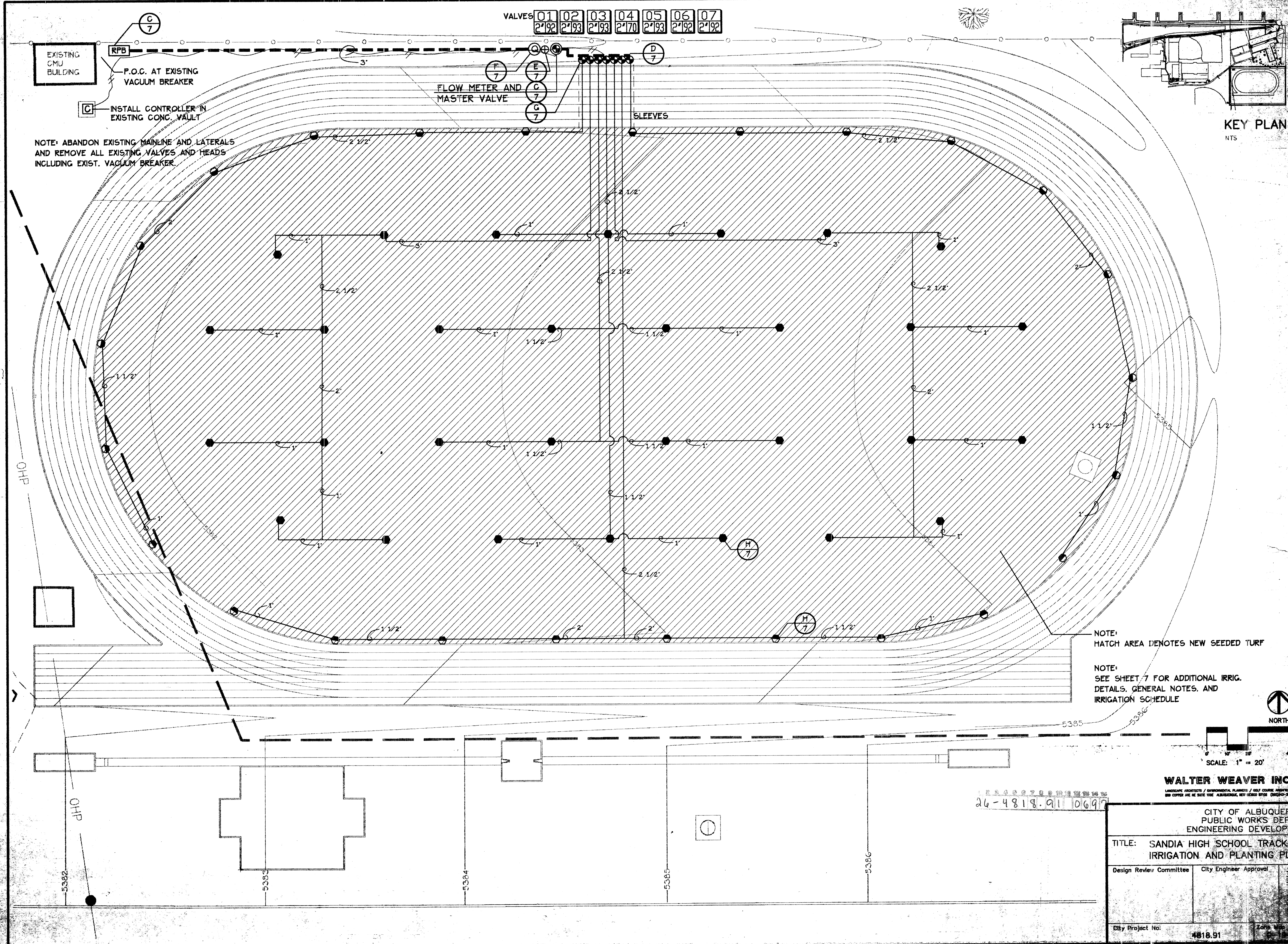
- 5360.32 TEMPORARY BENCHMARK - PK NAIL SET
- SEWERLINE
- OVERHEAD POWERLINE
- LIGHT POLE
- WATER METER
- WATER VALVE
- DRAIN INLET
- PAD MOUNTED TRANSFORMER
- CHAIN LINK FENCE
- PIPE FENCE
- CURB & GUTTER
- EXISTING CONCRETE SLAB OR WALK
- EXISTING PAVED AREA
- EXISTING GRAVEL BANK
- PROPOSED ASPHALT OVERLAY
- EXISTING PAVEMENT OR CONCRETE TO BE REMOVED
- NEW ASPHALT PAVEMENT
- PROPOSED CONCRETE
- SPOT ELEVATION: FG DENOTES FINISH GRADE
EG DENOTES EXISTING GROUND
- FLAG POLE
- TREES
- DRAINAGE SWALE
- 5384 - FINISH CONTOUR
- 5384 - EXISTING CONTOUR

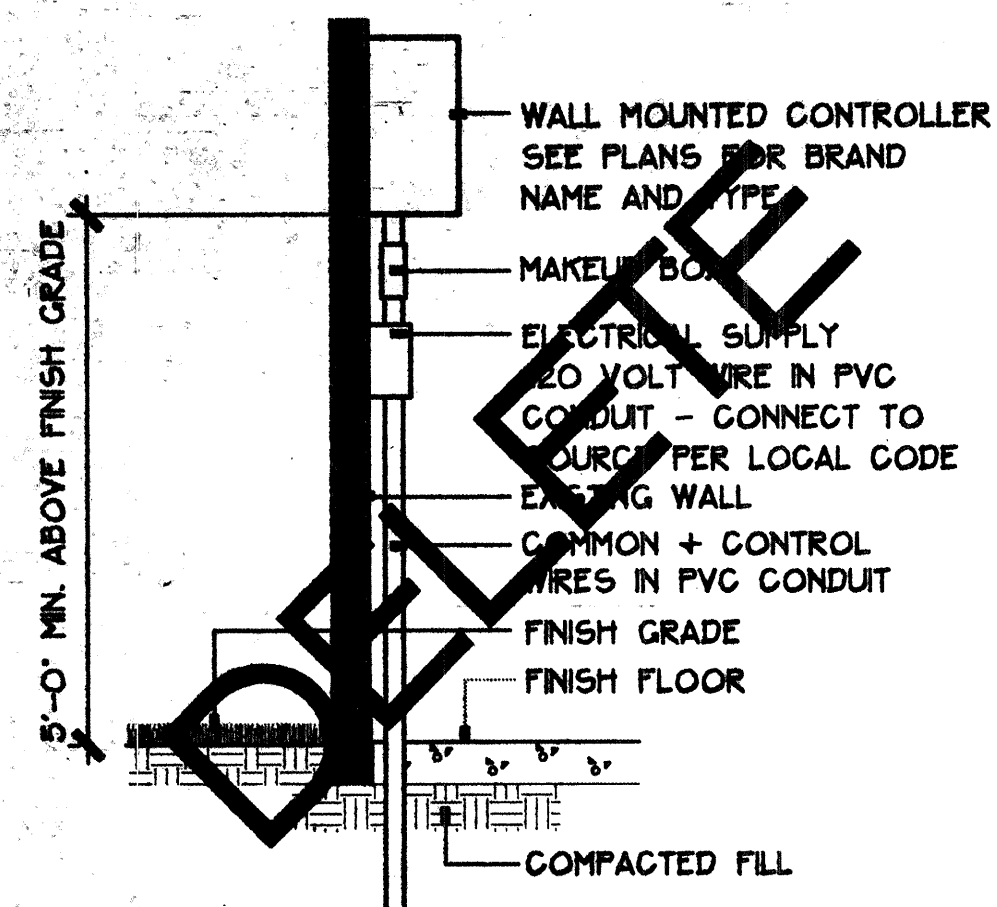


WILSON & ASSOCIATES
Civil/Environmental Engineering/Surveying
809 COPPER AVE. NW, ALBUQUERQUE, NM 87102 (505)243-6434

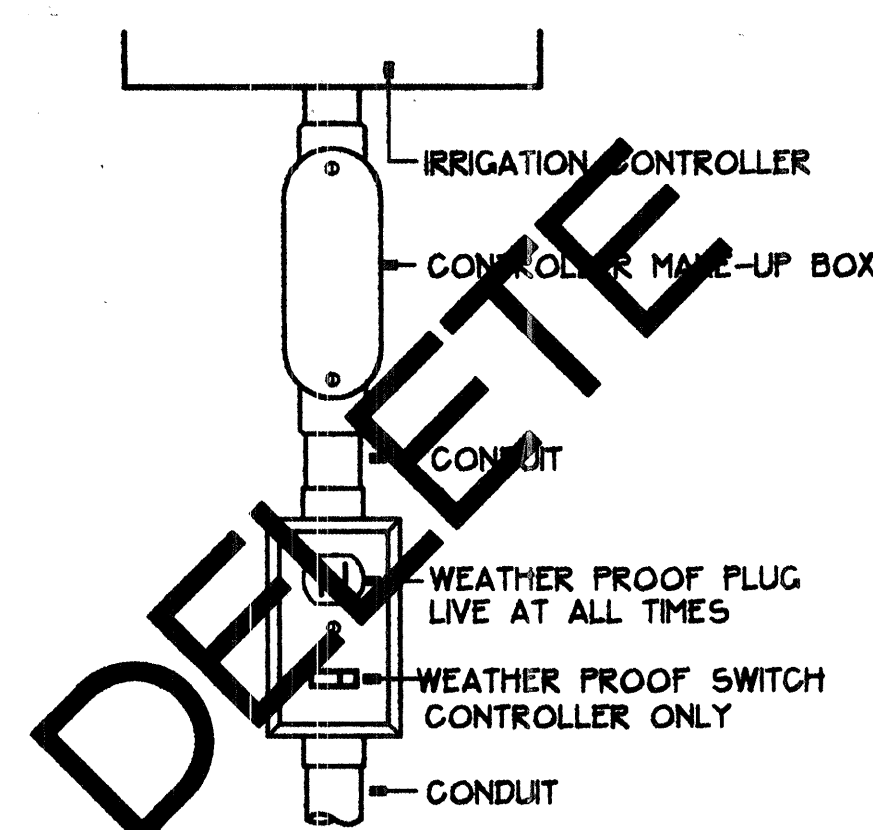
WALTER WEAVER INC.
LANDSCAPE ARCHITECTS / ENVIRONMENTAL PLANNERS / GOLF COURSE ARCHITECTS
809 COPPER AVE. NW, ALBUQUERQUE, NEW MEXICO 87102 (505)243-6434

CITY OF ALBUQUERQUE PUBLIC WORKS DEPARTMENT ENGINEERING DEVELOPMENT GROUP	
TITLE: SANDIA HIGH SCHOOL IMPROVEMENTS DRAINAGE PLAN	
Design Review Committee	City Engineer Approval
City Project No. 4818.91	Zone Map No. 6-19-2

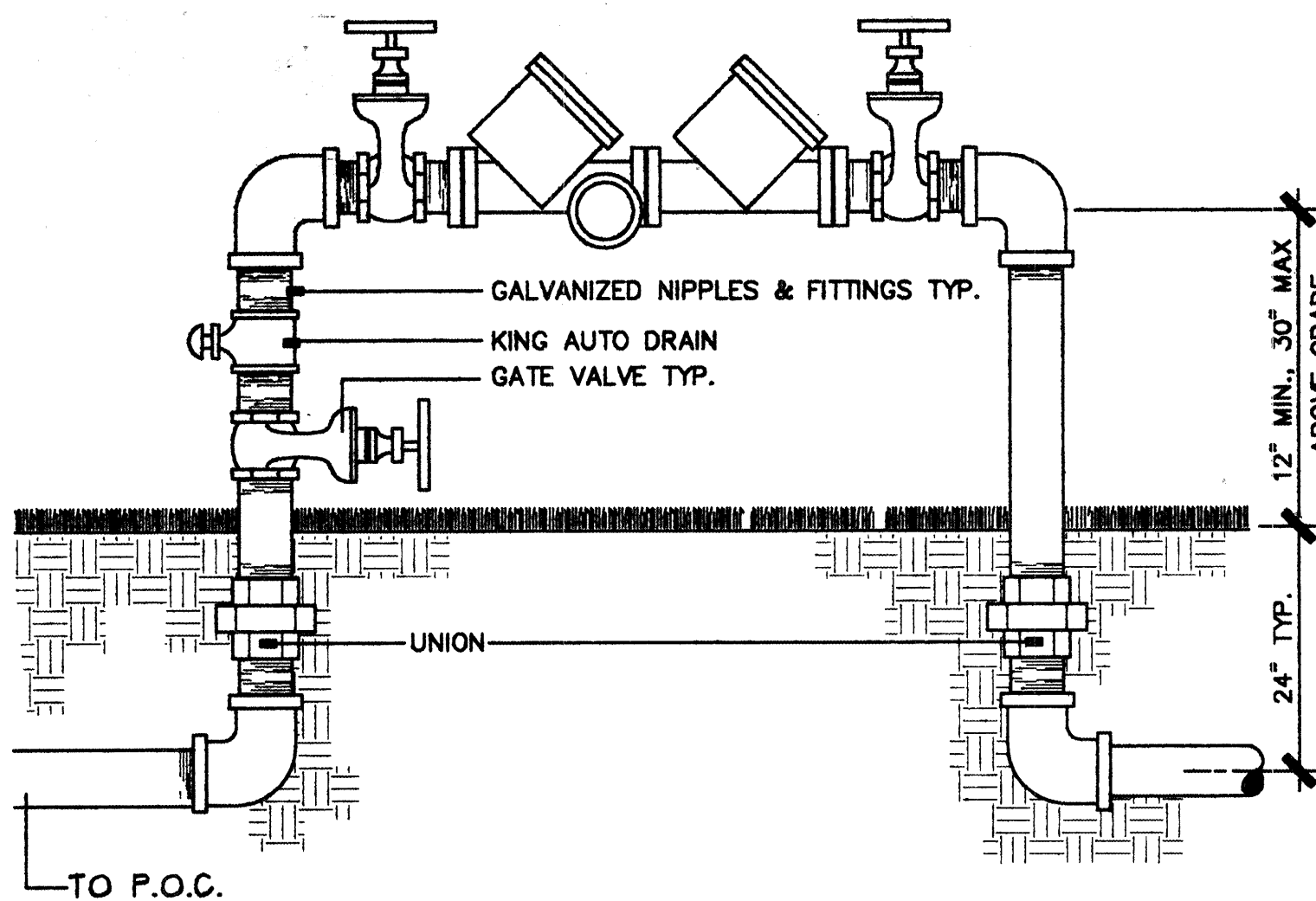
[illegible]



A WALLMOUNT CONTROLLER N.T.S.

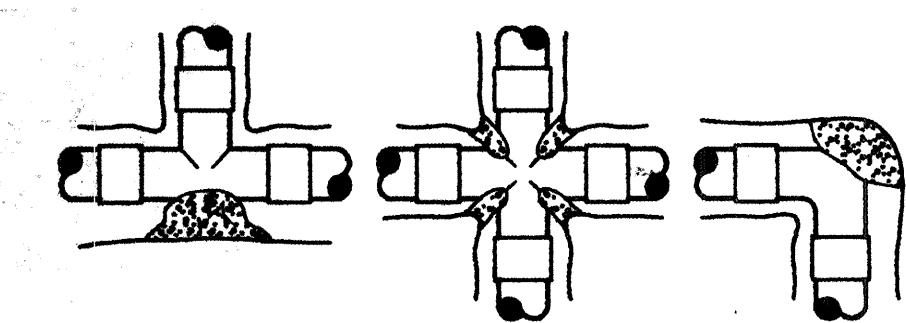
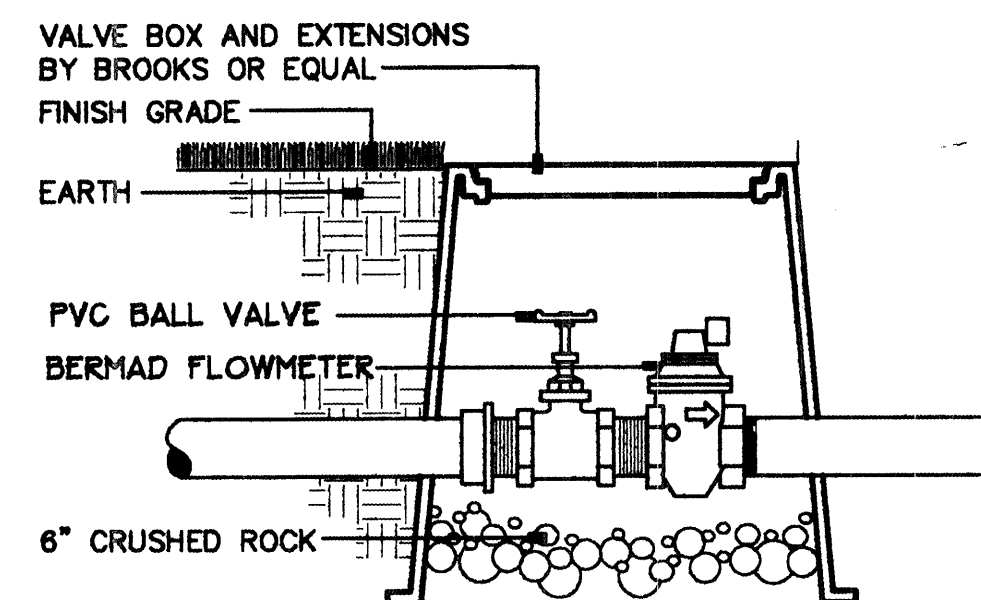


B ELECTRICAL SUPPLY N.T.S.

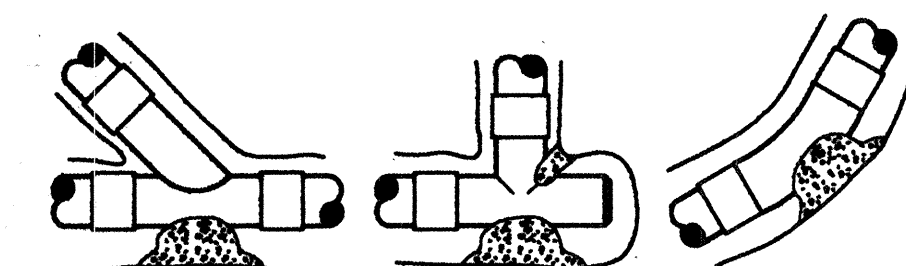


C MASTER CONTROL VALVE AND REDUCED PRESSURE BP ASSEMBLY N.T.S.

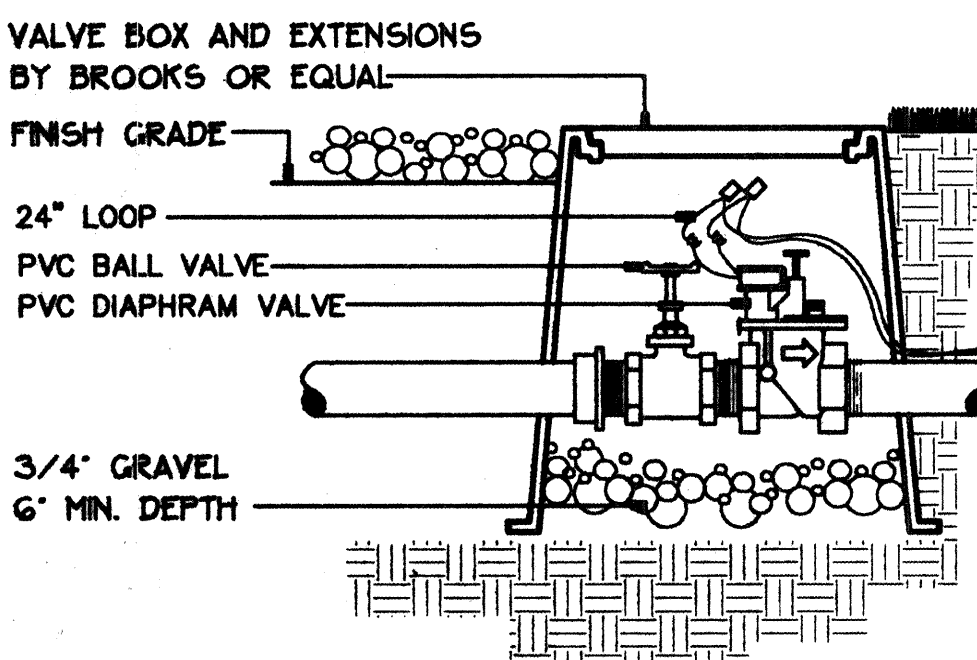
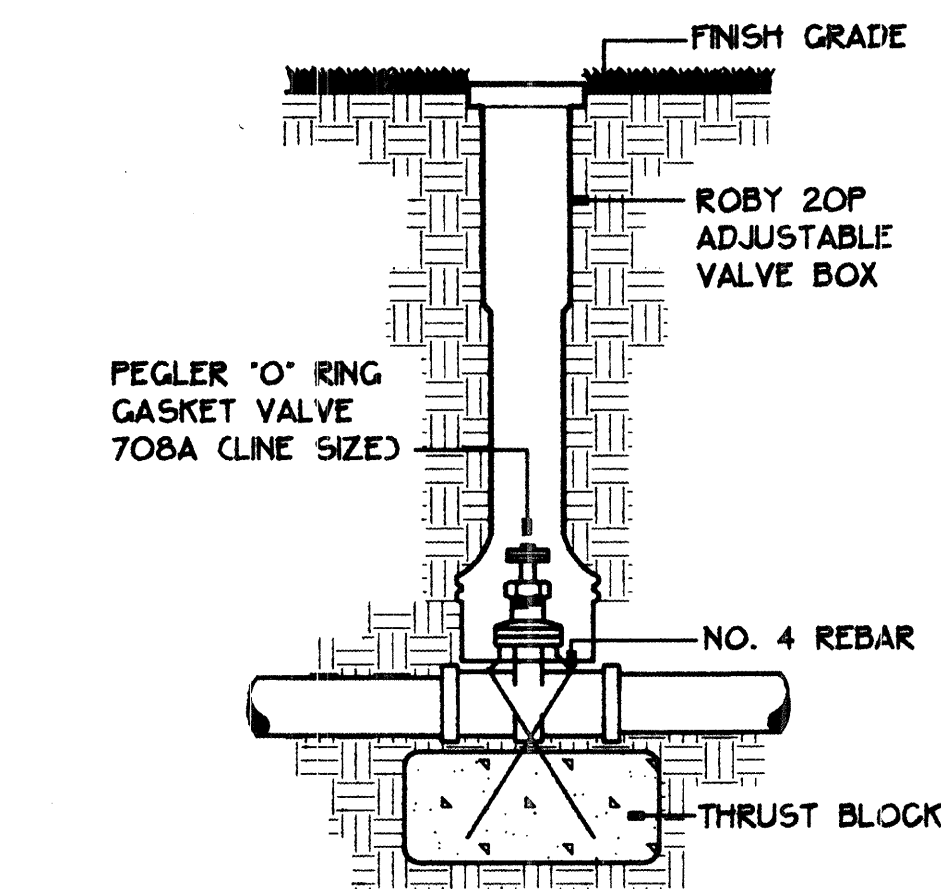
NOTE:
28\"/>



NOTE: PROVIDE THRUST BLOCKS • ALL PIPE GREATER THAN 3\"/>



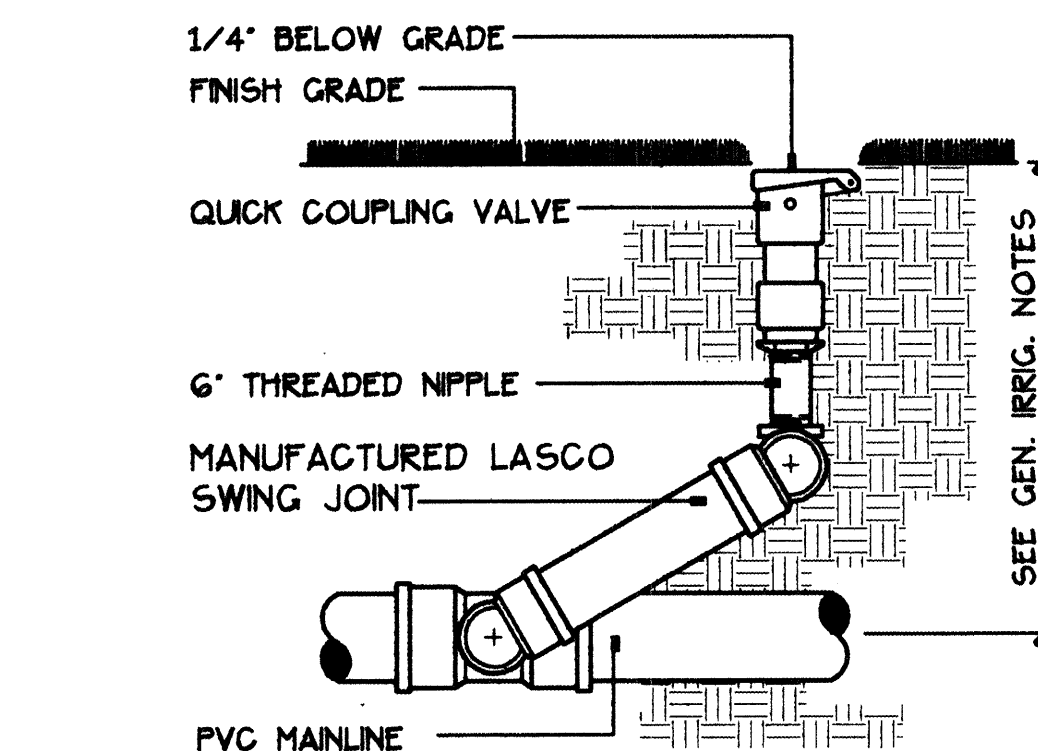
D THRUST BLOCKS N.T.S.



NOTE: SEE GENERAL IRRIGATION NOTES FOR DEPTH OF MAIN AND LATERAL LINES. PLACE FILTER FABRIC OVER HOLES IN VALVE BOX TO KEEP DIRT OUT. BOX TO HAVE BOLT DOWN LID. BOX AND EXTENSION SHALL EXTEND TO BOTTOM OF GRAVEL. SET BOX SQUARE WITH GRADE.

G CONTROL VALVE N.T.S.

E IRON BODY GATE VALVE N.T.S.



F QUICK COUPLING VALVE N.T.S.

IRRIGATION SCHEDULE

SYMBOL	PRODUCT / DESCRIPTION
	IRRIGATION CONTROLLER - IRRITROL 12 STATION CONTROLLER
	2' BERMAD FLOWMETER SPEARS BALL VALVE
	REMOTE CONTROL VALVE - RAINBIRD FEB SERIES
	PEGLER GATE VALVE - LINE SIZE
	QUICK COUPLER VALVE - RAINBIRD 33DRG 1"
	RAINBIRD - F4-FC-12
	RAINBIRD - F4-FC-12
	MAINLINE - SCHEDULE 40 PVC SIZED PER PLAN WITH INDICATOR TAPE ON TOP OF PIPE
	LATERAL - CLASS 200 PVC SIZED PER PLAN
	SOLID COPPER CONTROL WIRE
	IRRIGATION SLEEVE
	VALVE I.D.
	VALVE SIZE VALVE GPM

TURF SEED SPECIFICATION

TURF SEED TO BE 'SCOTT'S PRO TURF' SPORTS TURF SEED MX OR EQUAL. APPLICATION RATE IS 5 LBS PER 1000 S.F.

GENERAL NOTES

- CONTRACTOR SHALL EXAMINE THE SITE AND FAMILIARIZE HIMSELF WITH ALL CONDITIONS PERTINENT TO THIS WORK.
- IT WILL BE THE CONTRACTOR'S RESPONSIBILITY TO DETERMINE THE LOCATION OF ALL UNDERGROUND UTILITIES AND TO AVOID DAMAGE TO SAME.
- THE CONTRACTOR WILL NOT WILLFULLY INSTALL THE IRRIGATION SYSTEM AS SHOWN ON THE PLANS WHEN IT IS OBVIOUS IN THE FIELD THAT CONDITIONS EXIST WHICH MIGHT NOT HAVE BEEN CONSIDERED IN THE DESIGN OF THE SYSTEM. SUCH CONDITIONS SHOULD BE BROUGHT TO THE ATTENTION OF THE LANDSCAPE ARCHITECT. IN THE EVENT CONTRACTOR DOES NOT NOTIFY THE LANDSCAPE ARCHITECT, THE CONTRACTOR ASSUMES FULL RESPONSIBILITY FOR ANY REVISIONS NECESSARY.
- IRRIGATION SYSTEM HAS BEEN DESIGNED TO A STATIC PRESSURE OF 50 PSI WITH A MAXIMUM DEMAND OF 93 GPM. THE ANTICIPATED WATERING TIME FOR THE SYSTEM IS 2.3 HOURS.
- ACTUAL FIELD CONDITIONS MAY NECESSITATE ADDING, DELETING, OR MAKING MINOR ADJUSTMENTS IN SPACING OF HEADS TO INSURE UNIFORM COVERAGE AND DISTRIBUTION.
- ALL LATERAL AND DISTRIBUTION LINES ARE TO BE CLASS 200 PVC AT A MINIMUM OF 12 INCHES BELOW FINISH GRADE.
- ALL PRESSURE LINES ARE TO BE SCHEDULE 40 PVC AT A MINIMUM DEPTH OF 24 INCHES BELOW FINISH GRADE.
- ALL POP-UP TYPE IRRIGATION HEADS INSTALLED IN LAWN AREAS SHALL BE INSTALLED SO THAT THE TOP OF HEAD IS BELOW FINISH GRADE PER MANUFACTURER'S SPEC.
- THE CONTRACTOR SHALL GUARANTEE ALL PLANT MATERIAL CONSTRUCTION MATERIALS, AND LABOR FOR A PERIOD OF ONE YEAR (365 DAYS) FROM THE DATE OF FINAL ACCEPTANCE OF THE PROJECT. THE CONTRACTOR SHALL REPAIR AND REPLACE WITHIN SEVEN DAYS AS DIRECTED BY THE LANDSCAPE ARCHITECT.
- FOR ALL AREAS TO BE SEED OR SODDED, ADD ORGANIC MATERIAL TO THE TOP SOIL AT A RATE OF ONE YARD PER 500 SQ. FT. AND TILL TO A DEPTH OF SIX INCHES.
- FERTILIZE ALL TURF AREAS WITH 18-24-16 ANALYSIS. AT A RATE OF 8 LBS. PER 1000 S.F.

1 2 3 4 5 6 7 8 9 10 11 12 13 14 15
26-4818.91 0797

WALTER WEAVER INC.
LANDSCAPE ARCHITECTS / ENVIRONMENTAL PLANNERS / SOIL SCIENCE ARCHITECTS
300 COPPER AVE. NE SUITE 1000 ALBUQUERQUE, NEW MEXICO 87108 (505)463-3800

CITY OF ALBUQUERQUE PUBLIC WORKS DEPARTMENT ENGINEERING DEVELOPMENT GROUP	
TITLE: SANDIA HIGH SCHOOL TRACK IMPROVEMENTS TRACK IRRIGATION SCHEDULE, NOTES AND DETAILS	
Design Review Committee	City Engineer Approval
City Project No. 4818.91	Zone Map No. 0-15-2

SURVEY INFORMATION		BENCH MARK		AS BUILT INFORMATION							
NO.	BY	REVISIONS / REMARKS	LANDSCAPE ARCHITECT'S SEAL	FIELD NOTES		CONTRACTOR	WORK STARTED BY	DATE	INSPECTIONS APPROVED	DATE	
				NO.	BY						DATE
			