

FILE SPECIFICATION  
D:\SACURIN\S-1

PLOT SCALE  
1"=1'

OPERATOR  
AUS/CM

PLOT DATE  
01/19/94 12:18



CITY OF ALBUQUERQUE

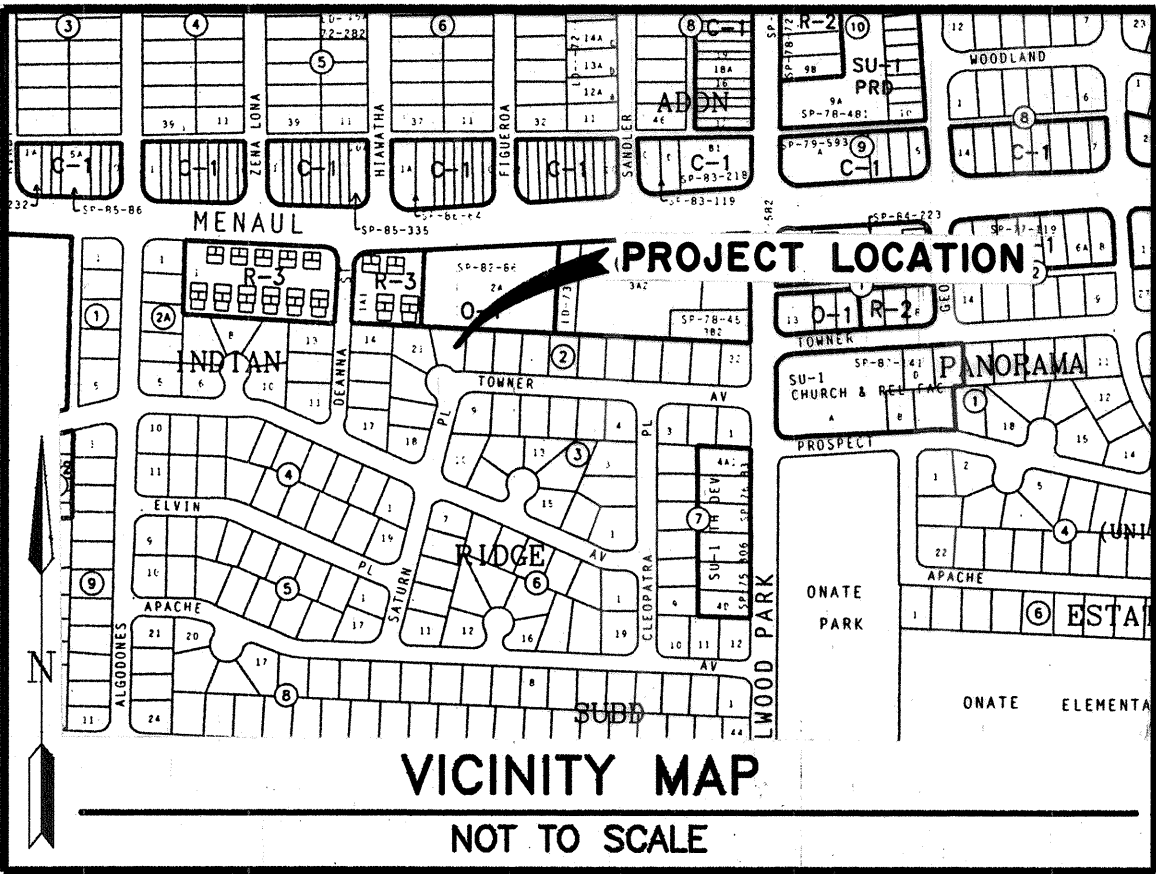
CONSTRUCTION PLANS  
FOR

SATURN / TOWNER  
DRAINAGE IMPROVEMENTS

JANUARY 1994

INDEX of SHEETS

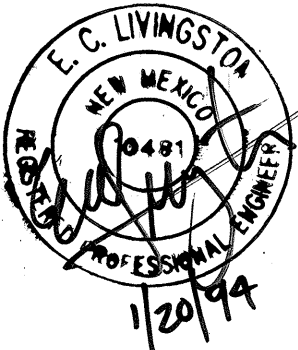
Sheet No.	Sheet Title
1	TITLE SHEET, GENERAL NOTES & VICINITY MAP
2	PLAN & DETAILS



GENERAL NOTES

1. TWO WORKING DAYS PRIOR TO ANY EXCAVATION, CONTRACTOR MUST CONTACT N.M. ONE-CALL SYSTEM, INC., 260-1990, FOR LOCATION OF EXISTING UTILITIES.
2. ALL WORK DETAILED ON THESE PLANS TO BE PERFORMED UNDER CONTRACT SHALL, EXCEPT AS OTHERWISE STATED OR PROVIDED FOR HEREON, BE CONSTRUCTED IN ACCORDANCE WITH THE CITY OF ALBUQUERQUE STANDARD SPECIFICATIONS FOR PUBLIC WORKS CONSTRUCTION, 1986 (INCLUDING AMENDMENTS 1, 2, 3 & 4). REFERENCED TO HEREIN AS THE "STANDARD SPECIFICATIONS".
3. THE CONTRACTOR IS RESPONSIBLE FOR ANY DAMAGE CAUSED TO EXISTING VALVE BOXES, SIDEWALKS, ELECTRIC CONDUIT, MANHOLES, AND CURB & GUTTER DURING CONSTRUCTION AND SHALL REPAIR OR REPLACE SAME AT CONTRACTOR'S EXPENSE.
4. THE LOCATION OF EXISTING UNDERGROUND UTILITIES HAS BEEN DETERMINED BY INFORMATION PROVIDED BY OTHERS, AND SHALL BE CONSIDERED APPROXIMATE ONLY. THE CONTRACTOR SHALL DETERMINE THE EXACT LOCATION AND SIZE OF ALL EXISTING UTILITY LINES PRIOR TO CONSTRUCTION AND SHALL BE RESPONSIBLE FOR ANY AND ALL DAMAGES RESULTING FROM FAILURE TO LOCATE ANY AND ALL UTILITIES.
5. QUANTITIES SHOWN FOR THE VARIOUS BID ITEMS ARE FOR THE CONTRACTOR'S INFORMATION ONLY. PAYMENT SHALL BE BASED ON ACTUAL QUANTITIES AS CONSTRUCTED.
6. THE CONTRACTOR IS RESPONSIBLE FOR REMOVAL AND DISPOSAL OF ALL DEMOLITION DEBRIS IN AN ENVIRONMENTALLY ACCEPTABLE MANNER AT A LOCATION APPROVED BY THE PROJECT ENGINEER. ALL SALVAGED MATERIALS SHALL BECOME THE PROPERTY OF THE CONTRACTOR.
7. THE CONTRACTOR SHALL SUPPORT AND MAINTAIN OPERATIONAL ALL UTILITIES EXPOSED DURING TRENCHING AND OTHER CONSTRUCTION OPERATIONS. ALL CONSTRUCTION ACTIVITIES INVOLVING GAS, POWER, WATER, FIBER OPTIC, AND/OR OTHER UTILITY LINES SHALL BE COORDINATED WITH THE OWNER OF THE UTILITY PRIOR TO ANY DISTURBANCE. NO UTILITY SERVICE SHALL BE DISRUPTED WITHOUT FIRST NOTIFYING ALL AFFECTED PARTIES 48 HOURS IN ADVANCE.

REV	SHEETS	CITY ENGR	DATE	USER DEPT	DATE	USER DEPT	DATE
APPROVAL OF REVISIONS							



**BOYLE**  
ENGINEERING CORPORATION

APPROVED FOR  
CONSTRUCTION  
C.E.

PROJECT NO.: 4830.92

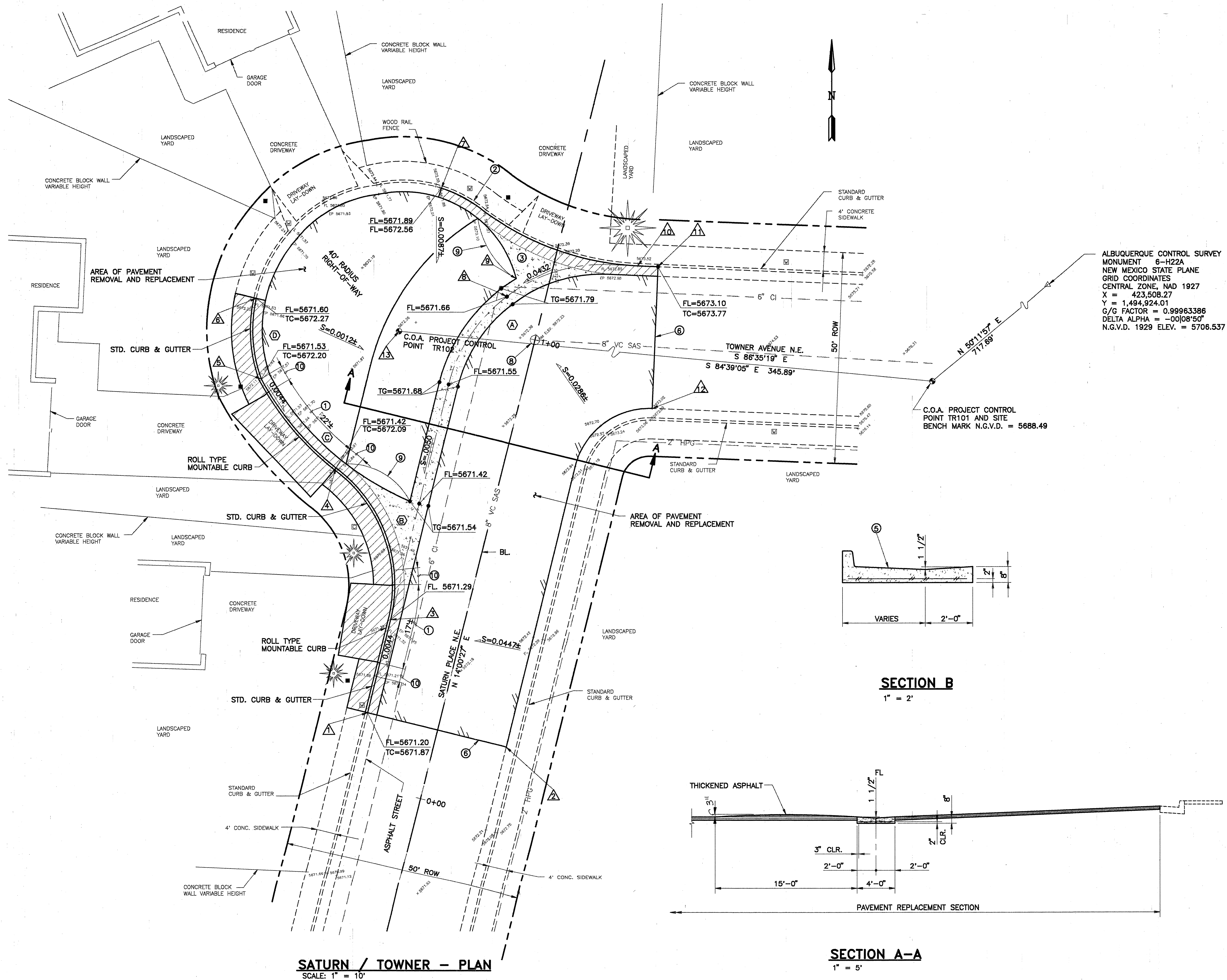
SHEET 1 of 2

FILE SPECIFICATION  
D:\SATURN\S-2

PLOT SCALE  
1"=10'

OPERATOR  
ALG/CAM

PLOT DATE  
01/19/94 14:52



**SATURN / TOWNER - PLAN**  
SCALE: 1" = 10'

**SECTION A-A**  
1" = 5'

**SECTION B**  
1" = 2'

### LEGEND

- CURB & GUTTER REMOVAL
- EXISTING CURB & GUTTER
- NEW STD. CURB & GUTTER
- NEW CONCRETE VALLEY GUTTER
- PAVEMENT REMOVAL AND REPLACEMENT

### NOTES:

- USE ROLL TYPE MOUNTABLE CURB (STANDARD 2415) THROUGH DRIVEWAYS. USE STANDARD CURB & GUTTER ELSEWHERE.
- TRANSITION FROM STANDARD CURB & GUTTER TO 1 1/2" DEPRESSED GUTTER IN 10'.
- USE DEPRESSED GUTTER WITH LIP DEPRESSED 1 1/2".
- PAVEMENT REPLACEMENT SECTION PER STD. DET. 2405.
- REFER TO STD. DET. 2421 FOR ADDITIONAL REQUIREMENTS.
- SAWCUT AND MATCH EXIST. PVMT.
- DISTURBED LANDSCAPING SHALL BE REPLACED WITH EQUAL.
- ADJUST SAS MH RIM TO GRADE. BL. STA. 1+00.00 @ CL. OF MH
- TAPER 3" THICKENED ASPHALT AT 6:1 AND MATCH CONC.
- TRANSITION FROM STANDARD CURB & GUTTER TO ROLL TYPE MOUNTABLE CURB IN 3'.

### CURVE DATA

CL. VALLEY GUTTER		CURVE DATA @ FL	
A	78°27'28"	A	67°40'18"
D	172°09'13"	D	188°03'22"
R	33.28'	R	30.47'
T	27.17'	T	20.42'
L	45.57'	L	35.98'

CURVE DATA @ FL		CURVE DATA @ FL	
A	23°42'16"	A	31°57'54"
D	95°58'56"	D	198°46'01"
R	59.69'	R	28.83'
T	12.53'	T	8.28'
L	24.71'	L	16.08'

### STATIONS & OFFSETS

- OPP. STA. 0+14.84 BL., 15.21' LT.
- OPP. STA. 0+14.93 BL., 14.94' RT.
- OPP. STA. 0+35.21 BL., 15.27' LT.
- OPP. STA. 0+63.36 BL., 34.20' LT.
- OPP. STA. 0+77.94 BL., 54.09' LT.
- OPP. STA. 0+94.27 BL., 59.24' LT.
- OPP. STA. 1+26.21 BL., 26.92' LT.
- OPP. STA. 1+07.48 BL., 7.96' LT.
- OPP. STA. 1+11.57 BL., 6.96' LT.
- OPP. STA. 1+20.36 BL., 17.26' RT.
- OPP. STA. 1+21.24 BL., 21.48' RT.
- OPP. STA. 0+91.91 BL., 27.55' RT.
- OPP. STA. 0+94.79 BL., 28.29' RT.

CITY OF ALBUQUERQUE  
PUBLIC WORKS DEPARTMENT  
ENGINEERING GROUP

### TITLE: SATURN / TOWNER DRAINAGE IMPROVEMENTS PLAN & DETAILS

APPROVALS	ENGINEER	DATE	APPROVALS	ENGINEER	DATE
DRC CHAIRMAN	B.G. Gandy	2-28-94	WATER	M.A. RUK	1-25-94
TRANSPORTATION		1-26-94	WASTE WATER	M.A. RUK	1-25-94
HYDROLOGY		1/26/94			

DRAWING NO.	4830.92	MAP NO.	H-22	SHEET	2	OF	2
-------------	---------	---------	------	-------	---	----	---

AS BUILT INFORMATION		BENCH MARKS		SURVEY INFORMATION		ENGINEERS SEAL	
CONTRACTOR	WORK STOPPED BY	DATE	NO.	DATE	NO.	DATE	NO.
6-H22A LOCATED 8.6 MILES NORTHEAST OF DOWNTOWN ALBUQUERQUE, AT THE INTERSECTION OF MENAUL BLVD. N.E. AND CHELWOOD PARK BLVD. N.E.							
THE STATION MARK IS A STANDARD ACS BRASS TABLET CONCRETE POST STAMPED "6-H22A", SET IN TOP OF A PROJECTING 0.2 FT. ABOVE GROUND.							
ELEVATION = 5706.537							