

- ## GENERAL NOTES
1. ALL WORK DETAILED ON THESE DRAWINGS TO BE PERFORMED UNDER THIS CONTRACT SHALL, EXCEPT AS OTHERWISE NOTED, BE CONSTRUCTED IN ACCORDANCE WITH THE CITY OF ALBUQUERQUE STANDARD SPECIFICATIONS FOR PUBLIC WORKS CONSTRUCTION, 1986, WITH UPDATES 1-4 REFERENCES MADE TO STANDARD DRAWINGS ARE TO THAT SECTION OF THE SPECIFICATIONS WHICH INCLUDES MISCELLANEOUS STANDARD DETAILS.
  2. LOCATION OF UTILITIES ARE APPROXIMATE. IT IS THE RESPONSIBILITY OF THE CONTRACTOR TO LOCATE ALL PERTINENT UTILITIES IN THE FIELD. CALL ONE CALL SYSTEM, INC., AT 260-1990 TWO WORKING DAYS BEFORE ANY EXCAVATION.
  3. PRIOR TO CONSTRUCTION, THE CONTRACTOR SHALL EXCAVATE AND VERIFY THE HORIZONTAL AND VERTICAL LOCATIONS OF ALL OBSTRUCTIONS. SHOULD A CONFLICT EXIST, THE CONTRACTOR SHALL NOTIFY THE ENGINEER SO THAT THE CONFLICT CAN BE RESOLVED WITH MINIMUM AMOUNT OF DELAY.
  4. TRAFFIC CONTROL DEVICES AND PLAN SHALL CONFORM TO THE LATEST EDITION OF THE MANUAL OF UNIFORM TRAFFIC CONTROL DEVICES (MUTCD) AND THE REQUIREMENTS OF THE VILLAGE OF LOS RANCHOS DE ALBUQUERQUE.

- ## KEYED NOTES
- (1) ~~Install 8" insertion Tee on 8" AC line.~~  
~~Install 6" insertion Gate Valve on South~~  
~~leg of 8" AC line.~~ COA Std. drwgs: 2301,  
2326 and 2465. *USA A/PVC* *USA*  
*2" POLYURE*
  - (2) Install Fire Hydrant COA Std. drwg 2340  
Provide 2-6" Steel Pipe (Concrete filled)  
Bollards at each Fire Hydrant on street  
side.
  - (3) Install Double 1" Water Meter on common  
1 1/2" Service Line  
COA Std. drwgs 2361 and 2366.
  - (4) Install 6" Gate Valve with Valve Box  
COA Std. drwg 2326.
  - (5) Provide Mechanically Restrained Joints  
at bends and Fire Hydrants. LR shown  
on plans
  - (6) Concrete encased water line  
COA Std Drwg 2140
  - (7) 45° Elbows w/Mechanically Restrained  
Joints. LR shown on plans
  - (8) Install 6" insertion Tee on existing 6"  
water line. ~~Install 6" insertion Gate Valve~~  
~~on east leg of existing 6" line.~~ Install  
6" gate valve on new 6" waterline. COA  
Std. Drwgs 2301, 2326, and 2465 *USA*  
*A/PVC T & Ls, COUPLING.*
  - (9) Install 90° Elbow w/Mechanically Restrained  
Joints
  - (10) 3" Asphalt Concrete, 1500 lb. Stability on  
6" gravel basecourse and 12" compacted  
subgrade (95%)

APPROVAL OF AS BUILT DRAWINGS  
CHIEF CONSTRUCTION ENGINEER  
*Kenneth B. Ayle*  
DATE *7-22-94*

**APPROVED FOR  
CONSTRUCTION**  
*Revised B.R. 5/19/74*  
CITY ENGINEER DATE

CITY OF ALBUQUERQUE  
PUBLIC WORKS DEPARTMENT  
ENGINEERING GROUP

TITLE: **RIO GRANDE BLVD.  
WATERLINE EXTENSION**

APPROVALS	ENGINEER	DATE	APPROVALS	ENGINEER	DATE
DRC CHAIRMAN	<i>B.G. Gubaly</i>	4/25/94	WATER	<i>CS/Leedy</i>	4/13/94
TRANSPORT.	N/A		WASTE WATER	N/A <i>ERT</i>	4/13/94
HYDROLOGY	N/A				

PROJECT NO.	MAP NO.	SHEET OF
<b>4898.90</b>	D-14	1 2

ENGINEER'S SEAL		SURVEY INFORMATION		BENCH MARKS		AS BUILT INFORMATION	
		FIELD NOTES		BENCHMARK AND PROJECT T.B.M.:			
		NO.	BY	DATE		WORK	
		1			STATION 15+D-14, ELEVATION = 4986.73	CONTRACTOR <u>Sundance</u> <u>McGATE 7-54</u>	
						STAGED BY <u>C.O.A.</u>	
						DATE <u>7-54</u>	
						ADJUSTED BY <u>L. Remano</u>	
						DATE <u>7-54</u>	
						FIELD LOCATION BY <u>L. Remano</u>	
						DATE <u>7-54</u>	
						DRAWINGS	
						CORRECTED BY	
						DATE	
						<u>MICRO-FILM</u> INFORMATION	
						RECORDED BY	
						DATE	
						NO.	

**DONALD S. LIPPERT**  
REGISTERED PROFESSIONAL ENGINEER  
NO. 1043  
STATE OF MICHIGAN

4/4/74

Resource Technology, Inc.  
ENGINEERS AND ENVIRONMENTAL SCIENTISTS  
2129 Osuna Road NE, Suite 200  
Albuquerque, NM 87113  
(505) 345-3115

# GENERAL NOTES

- ALL WORK DETAILED ON THESE DRAWINGS TO BE PERFORMED UNDER THIS CONTRACT SHALL, EXCEPT AS OTHERWISE NOTED, BE CONSTRUCTED IN ACCORDANCE WITH THE CITY OF ALBUQUERQUE STANDARD SPECIFICATIONS FOR PUBLIC WORKS CONSTRUCTION, 1986, WITH UPDATES 1-4. REFERENCES MADE TO STANDARD DRAWINGS ARE TO THAT SECTION OF THE SPECIFICATIONS WHICH INCLUDES MISCELLANEOUS STANDARD DETAILS.
- LOCATION OF UTILITIES ARE APPROXIMATE. IT IS THE RESPONSIBILITY OF THE CONTRACTOR TO LOCATE ALL PERTINENT UTILITIES IN THE FIELD. CALL ONE CALL SYSTEM, INC., AT 260-1990 TWO WORKING DAYS BEFORE ANY EXCAVATION.
- PRIOR TO CONSTRUCTION, THE CONTRACTOR SHALL EXCAVATE AND VERIFY THE HORIZONTAL AND VERTICAL LOCATIONS OF ALL OBSTRUCTIONS. SHOULD A CONFLICT EXIST, THE CONTRACTOR SHALL NOTIFY THE ENGINEER SO THAT THE CONFLICT CAN BE RESOLVED WITH MINIMUM AMOUNT OF DELAY.
- TRAFFIC CONTROL DEVICES AND PLAN SHALL CONFORM TO THE LATEST EDITION OF THE MANUAL OF UNIFORM TRAFFIC CONTROL DEVICES (MUTCD) AND THE REQUIREMENTS OF THE VILLAGE OF LOS RANCHOS DE ALBUQUERQUE.

# KEYED NOTES

- Install 8" Insertion Tee on 8" AC line. ~~Install 8" Insertion Gate Valve on South leg of 8" AC line.~~ COA Std. drwgs: 2301, 2326 and 2465. **USE A/PVC TRANS. COUPLING.**
- Install Fire Hydrant COA Std. drwg 2340 Provide 2-6" Steel Pipe (Concrete filled) Bollards at each Fire Hydrant on street side.
- Install Double 1" Water Meter on common 1 1/2" Service Line COA Std. drwgs 2361 and 2366.
- Install 6" Gate Valve with Valve Box COA Std. drwg 2326.
- Provide Mechanically Restrained Joints at bends and Fire Hydrants. LR shown on plans
- Concrete encased water line COA Std Drwg 2140
- 45° Elbows w/Mechanically Restrained Joints. LR shown on plans
- Install 6" insertion Tee on existing 6" waterline. ~~Install 6" Insertion Gate Valve on South leg of existing 6" line.~~ Install 6" gate valve on new 6" waterline. COA Std. Drwgs 2301, 2326, and 2465. **USE A/PVC TRANSITION COUPLING.**
- Install 90° Elbow w/Mechanically Restrained Joints
- 3" Asphalt Concrete, 1500 lb. Stability on 6" gravel basecourse and 12" compacted subgrade (95%)

1 2 3 4 5 6 7 8 9 10 11 12 13 14 15  
26 4898. 900294

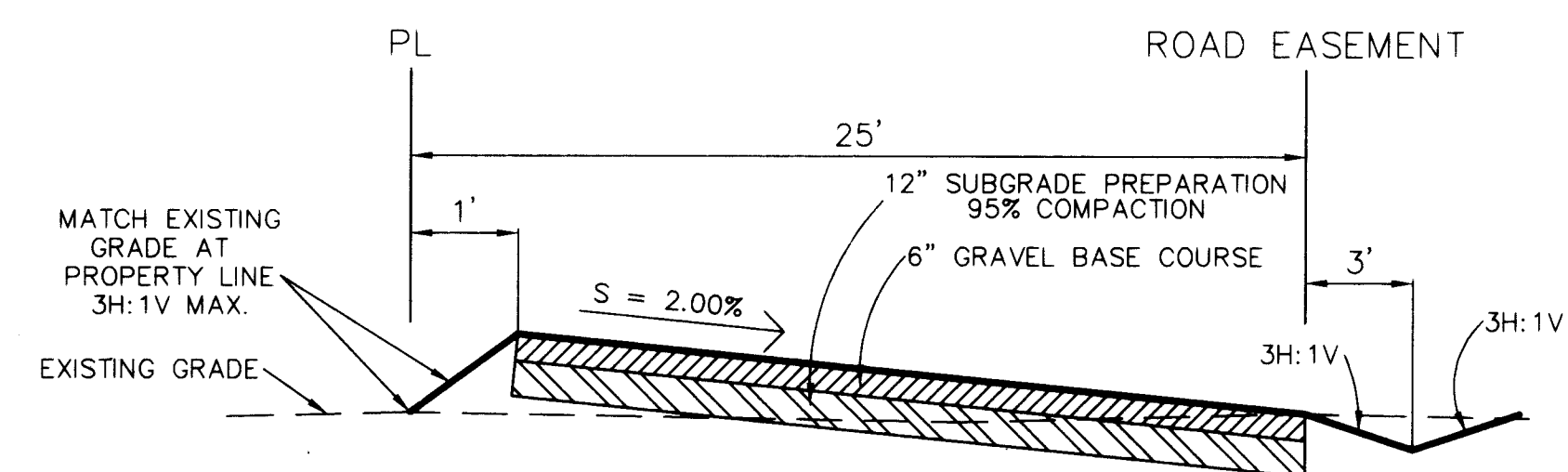
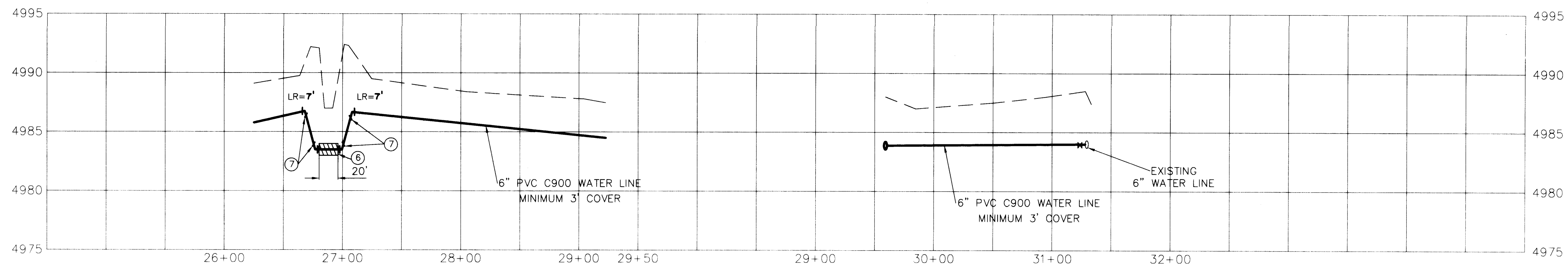
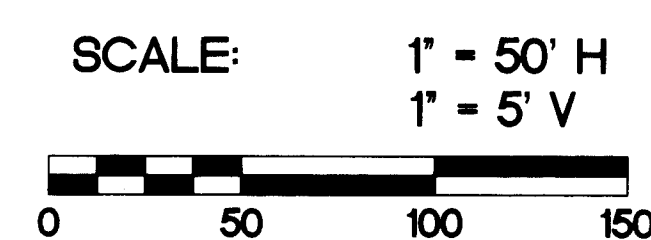
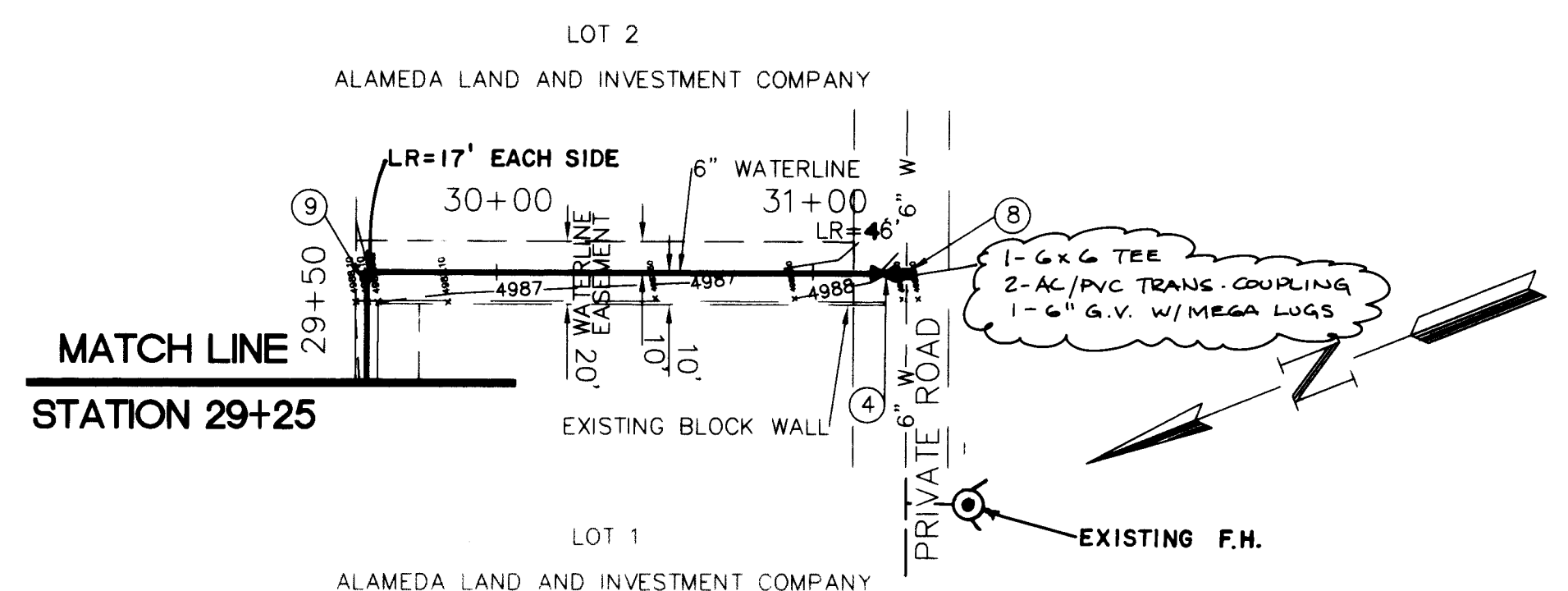
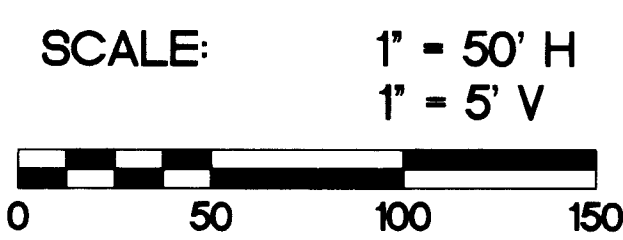
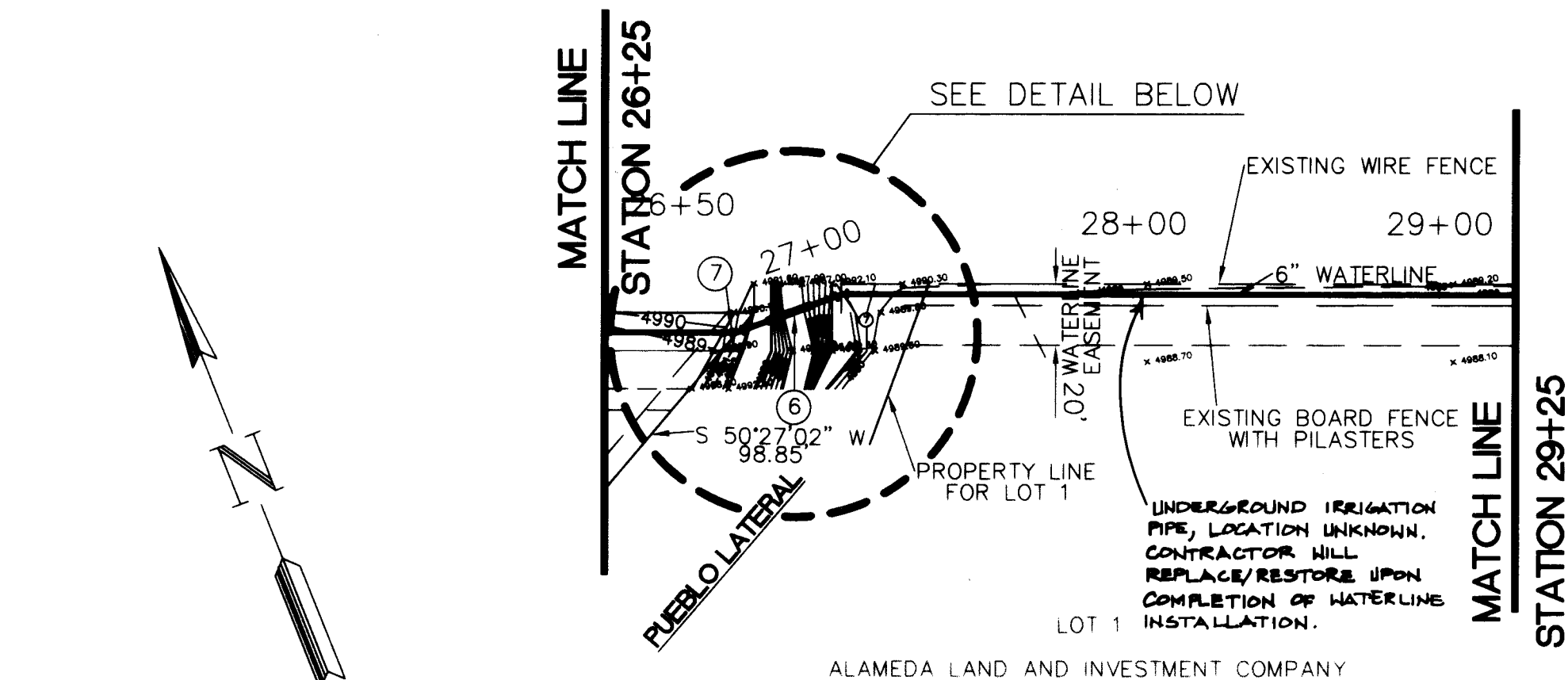
CITY OF ALBUQUERQUE  
PUBLIC WORKS DEPARTMENT  
ENGINEERING GROUP

TITLE: **RIO GRANDE BLVD.  
WATERLINE EXTENSION**

APPROVALS	ENGINEER	DATE	APPROVALS	ENGINEER	DATE
DRC CHAIRMAN	<i>B. J. Baskley</i>	4/25/94	WATER	<i>G. S. Leal</i>	4/18/94
TRANSPORT.	<i>NA</i>		WASTE WATER	<i>N/A GSD</i>	4/18/94
HYDROLOGY	<i>N/A</i>				

PROJECT NO.	4898.90	MAP NO.	D-14	SHEET	2	OF	2
-------------	---------	---------	------	-------	---	----	---

SCANNED BY LASON



TYPICAL ROAD SECTION  
NOT TO SCALE

