

CONSTRUCTION PLANS

FOR

ESTANCIA DEL SOL

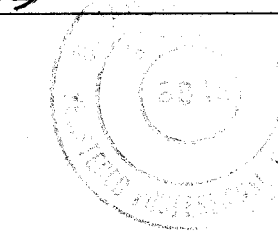
ACADEMY AND TRAMWAY ALBUQUERQUE, NM

1994

RECORD DRAWING

I hereby certify that the information contained on this drawing has been revised in accordance with information furnished by the Contractor, Franklin's Earthmoving, Inc. and by the Surveyor, Aldrich Land Surveying, and reflects the construction as actually accomplished. This plan as constructed is in substantial compliance with the Approved Plan.

Mark Goodwin 3/15/95
Mark Goodwin, NMPE 8948



INDEX TO DRAWINGS

1. TITLE SHEET
2. UTILITY IMPROVEMENTS
3. TURN BAY

1 2 3 4 5 6 7 8 9 10 11 12 13 14 15
26 49 16 90 01 95



APPROVAL OF AS BUILT DRAWINGS
CHIEF CONSTRUCTION ENGINEER
James S. Blum
DATE 4-7-95

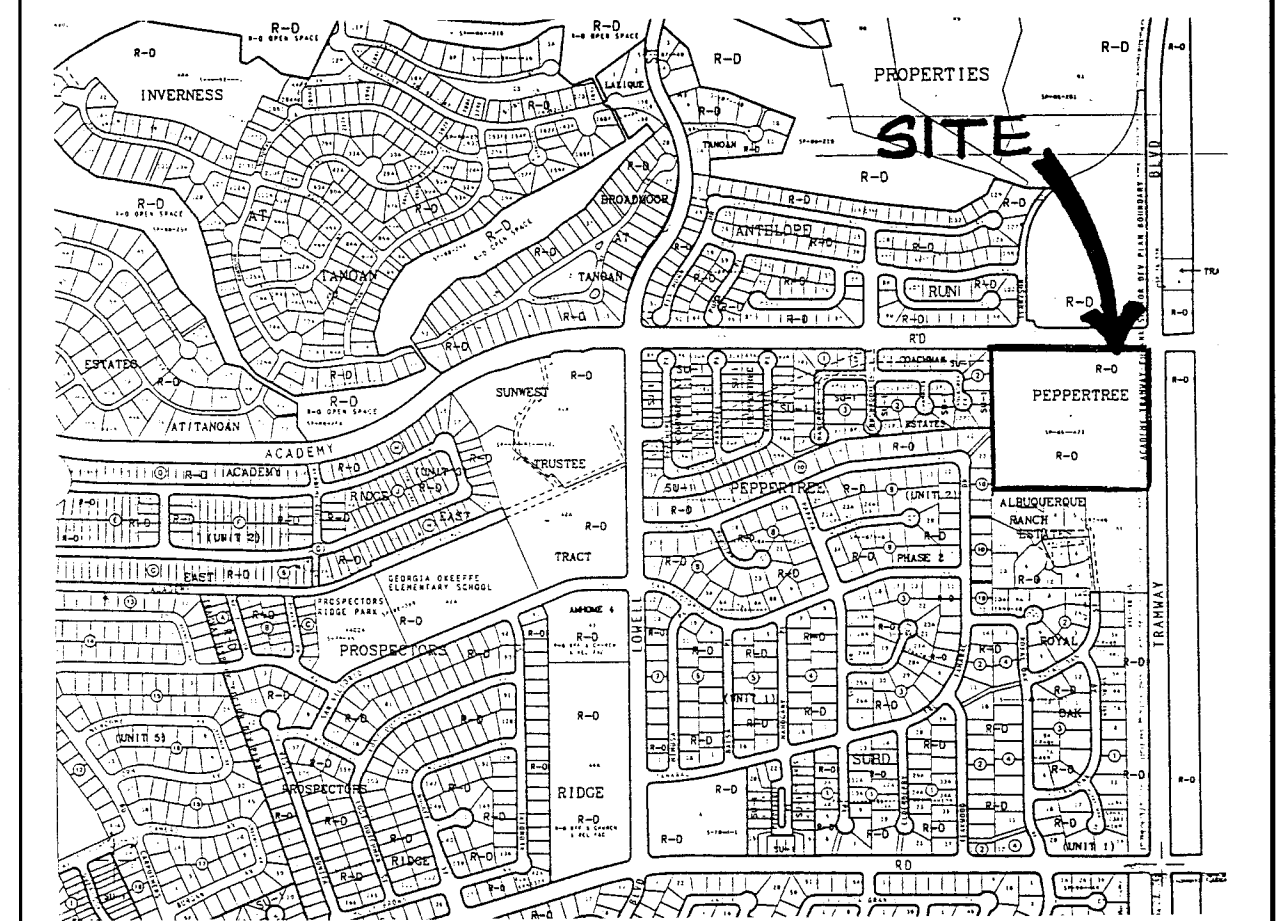
TIERRA WEST DEVELOPMENT
MANAGEMENT SERVICES
4600 MONTGOMERY BLVD. N.E., SUITE 3
ALBUQUERQUE, NEW MEXICO 87109
(505)883-7592

APPROVED FOR
CONSTRUCTION
Reynold 4/13/95
CITY ENGINEER DATE

REV	SHEETS	CITY ENGINEER	DATE	USER DEPT.	DATE	USER DEPT.	DATE

SCANNED BY
BY LASON

SHEET 1 OF 3



VICINITY MAP ZONE ATLAS E-22-Z

SCALE NONE

NOTICE TO CONTRACTORS

1. ALL WORK DETAILED ON THESE PLANS TO BE PERFORMED UNDER CONTRACT SHALL, EXCEPT AS OTHERWISE STATED OR PROVIDED FOR HEREON, BE CONSTRUCTED IN ACCORDANCE WITH THE CITY OF ALBUQUERQUE STANDARD SPECIFICATIONS FOR PUBLIC WORKS CONSTRUCTION, 1986 EDITION (UPDATE #4)

2. TWO WORKING DAYS PRIOR TO ANY EXCAVATION, THE CONTRACTOR MUST CONTACT NEW MEXICO ONE CALLS SYSTEM (260-1990) FOR LOCATION OF EXISTING UTILITIES.

3. PRIOR TO CONSTRUCTION, THE CONTRACTOR SHALL EXCAVATE AND VERIFY THE HORIZONTAL AND VERTICAL LOCATIONS OF ALL OBSTRUCTIONS. SHOULD A CONFLICT EXIST, THE CONTRACTOR SHALL NOTIFY THE ENGINEER OR SURVEYOR IMMEDIATELY SO THAT THE CONFLICT CAN BE RESOLVED WITH A MINIMUM AMOUNT OF DELAY.

4. THREE(3) WORKING DAYS PRIOR TO BEGINNING OF CONSTRUCTION, THE CONTRACTOR SHALL SUBMIT TO CONSTRUCTION COORDINATIONS DIVISION A DETAILED CONSTRUCTION SCHEDULE. TWO(2) WORKING DAYS PRIOR TO CONSTRUCTION, THE CONTRACTOR SHALL OBTAIN A BARRICADING PERMIT FROM THE CONST. COORDINATION DIVISION. CONTRACTOR SHALL NOTIFY BARRICADE ENGINEER (768-2551) PRIOR TO OCCUPYING AN INTERSECTION. REFER TO STANDARD SPECIFICATIONS.

5. ALL STREET STRIPING ALTERED OR DESTROYED SHALL BE REPLACED IN KIND BY CONTRACTOR TO LOCATION AND IN KIND AS EXISTING OR AS INDICATED BY THIS PLAN SET.

6. CONTRACTOR SHALL NOTIFY THE ENGINEER NOT LESS THAN SEVEN(7) DAYS PRIOR TO STARTING WORK IN ORDER THAT THE ENGINEER MAY TAKE NECESSARY MEASURES TO INSURE THE PRESERVATION OF SURVEY MONUMENTS. CONTRACTOR SHALL NOT DISTURB PERMANENT SURVEY MONUMENTS WITHOUT THE CONSENT OF THE ENGINEER AND SHALL NOTIFY THE ENGINEER AND BEAR THE EXPENSE OF REPLACING ANY THAT MAY BE DISTURBED WITHOUT PERMISSION. REPLACEMENT SHALL BE DONE ONLY BY THE CITY SURVEYOR. WHEN A CHANGE IS MADE IN THE FINISHED ELEVATIONS OF THE PAVEMENT OF ANY ROADWAY IN WHICH A PERMANENT SURVEY MONUMENT IS LOCATED, CONTRACTOR SHALL, AT HIS OWN EXPENSE, ADJUST THE MONUMENT COVER TO THE NEW GRADE UNLESS OTHERWISE SPECIFIED. REFER TO SECTION 4.4 OF THE GENERAL CONDITIONS OF THE STANDARD SPECIFICATIONS.

THE FOLLOWING NOTES ALSO APPLY WHEN CHECKED

☐ ALL UTILITIES AND UTILITY SERVICE LINES SHALL BE INSTALLED PRIOR TO PAVING.

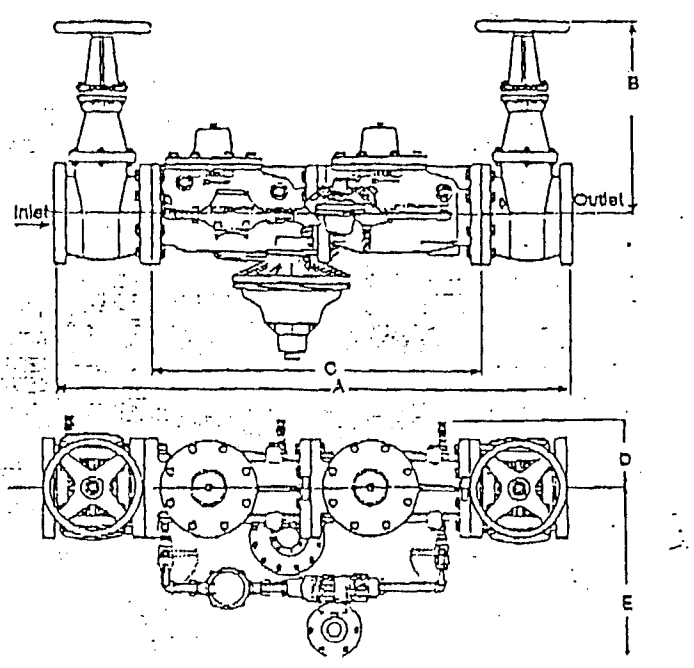
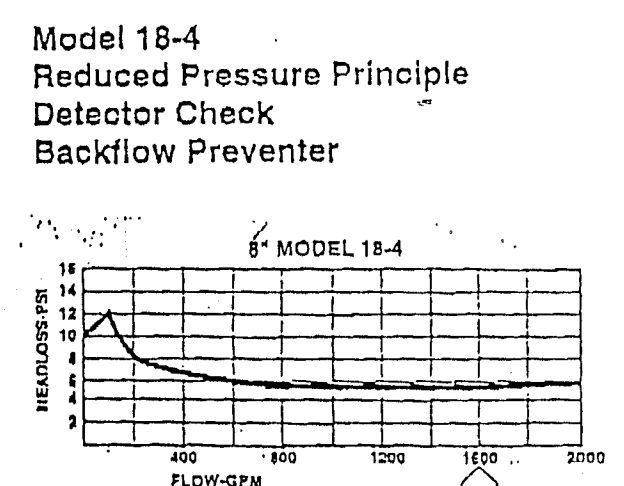
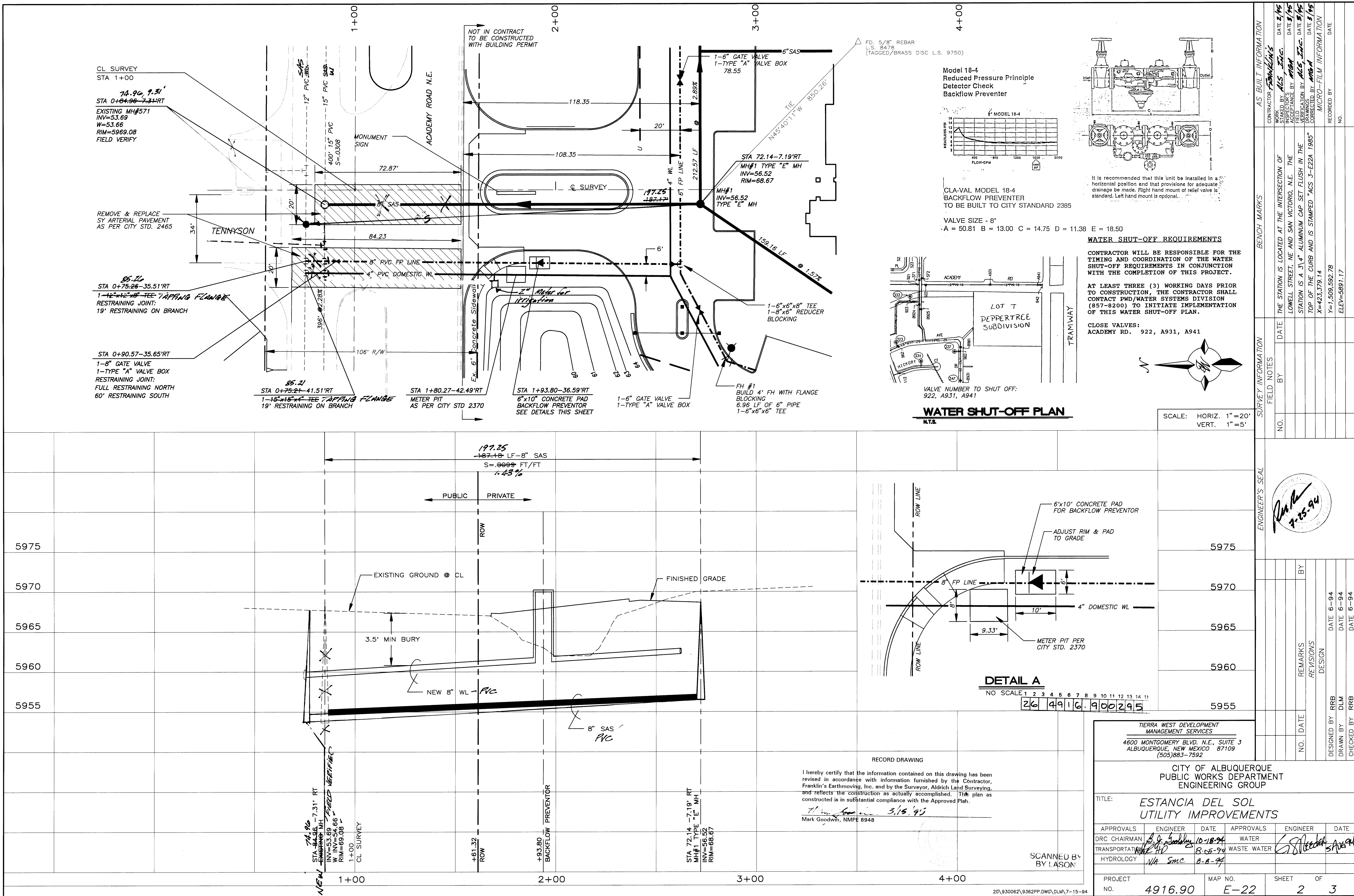
☐ BACKFILL COMPACTION SHALL BE ACCORDING TO SPECIFIED STREET USE.

☐ TACK COAT REQUIREMENTS SHALL BE DETERMINED BY THE CITY ENGINEER.

☐ SIDEWALKS AND WHEELCHAIR RAMPS WITHIN THE CURB RETURNS SHALL BE CONSTRUCTED WHEREVER A NEW CURB RETURN IS CONSTRUCTED.

☐ IF CURB IS DEPRESSED FOR A DRIVEPAD, THE DRIVEPAD SHALL BE CONSTRUCTED PRIOR TO ACCEPTANCE OF CURB AND GUTTER.

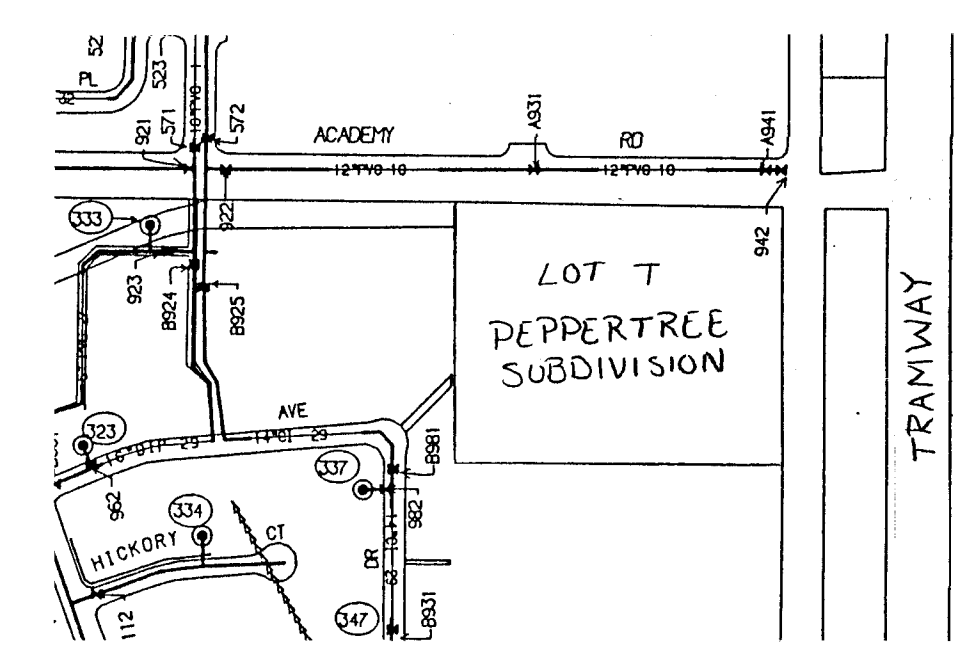
☐ ALL STORM DRAINAGE FACILITIES SHALL BE COMPLETED PRIOR TO FINAL ACCEPTANCE.



It is recommended that this unit be installed in a horizontal position and that provisions for adequate drainage be made. Right hand mount of relief valve is standard. Left hand mount is optional.

CLA-VAL MODEL 18-4 BACKFLOW PREVENTER TO BE BUILT TO CITY STANDARD 2385

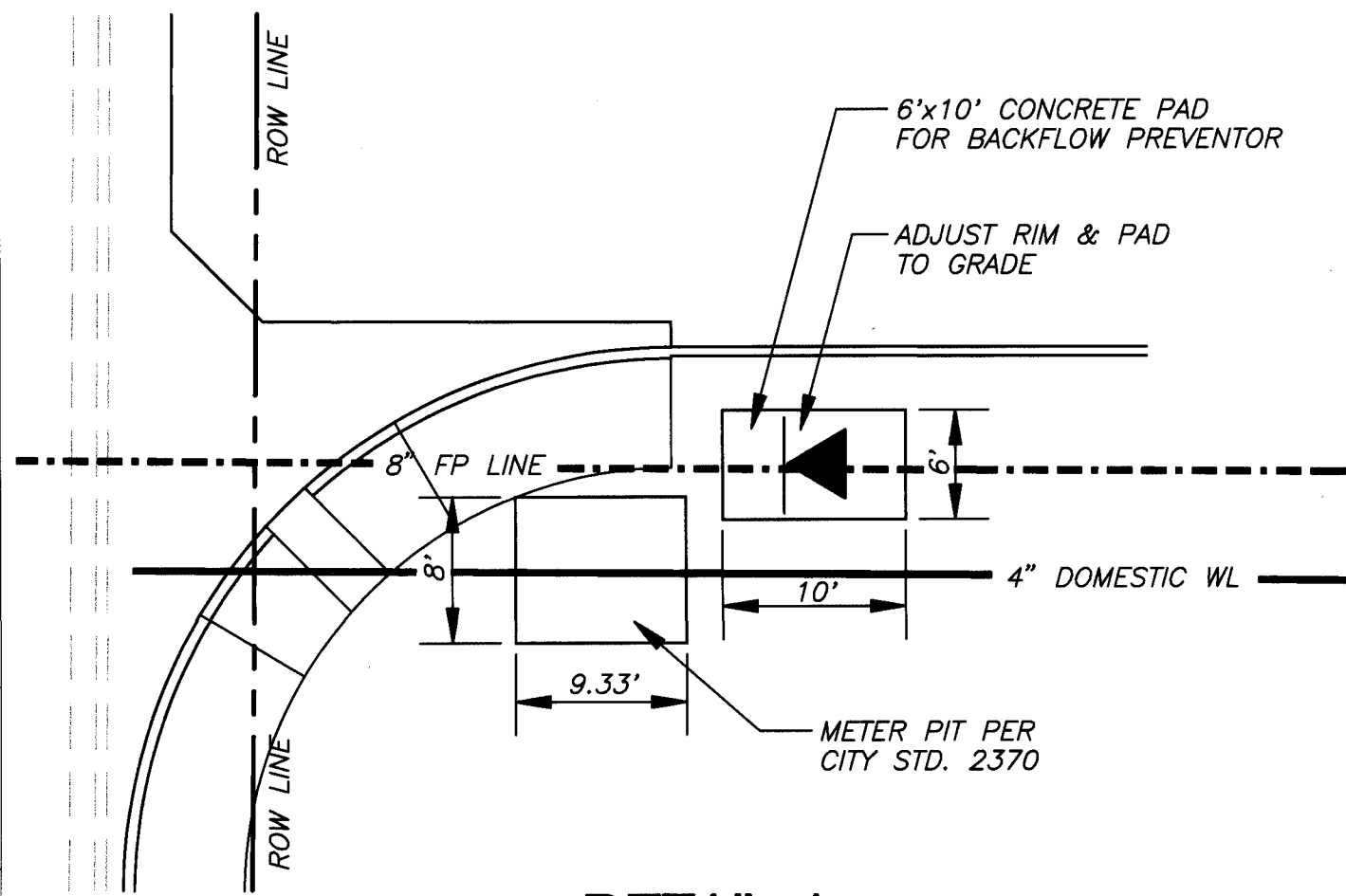
VALVE SIZE - 8"
-A = 50.81 B = 13.00 C = 14.75 D = 11.38 E = 18.50



WATER SHUT-OFF PLAN

N.T.S.

SCALE: HORIZ. 1"=20'
VERT. 1"=5'



DETAIL A

NO SCALE 1 2 3 4 5 6 7 8 9 10 11 12 13 14 15
26 49 16 9 00 29 5

I hereby certify that the information contained on this drawing has been revised in accordance with information furnished by the Contractor, Franklin's Earthmoving, Inc. and by the Surveyor, Aldrich Land Surveying, and reflects the construction as actually accomplished. This plan as constructed is in substantial compliance with the Approved Plan.

Mark Goodwin, NMPE 8948

SCANNED BY
BY LASON

TERRA WEST DEVELOPMENT MANAGEMENT SERVICES 4600 MONTGOMERY BLVD. N.E., SUITE 3 ALBUQUERQUE, NEW MEXICO 87109 (505)883-7592					
CITY OF ALBUQUERQUE PUBLIC WORKS DEPARTMENT ENGINEERING GROUP					
TITLE: ESTANCIA DEL SOL UTILITY IMPROVEMENTS					
APPROVALS	ENGINEER	DATE	APPROVALS	ENGINEER	DATE
DRC CHAIRMAN	B. J. Smedley	10-18-94	WATER		
TRANSPORTATION	W. H. Smedley	8-15-94	WASTE WATER		
HYDROLOGY	N/A Smedley	8-8-94			
PROJECT NO.	4916.90	MAP NO.	E-22	SHEET	2 OF 3

