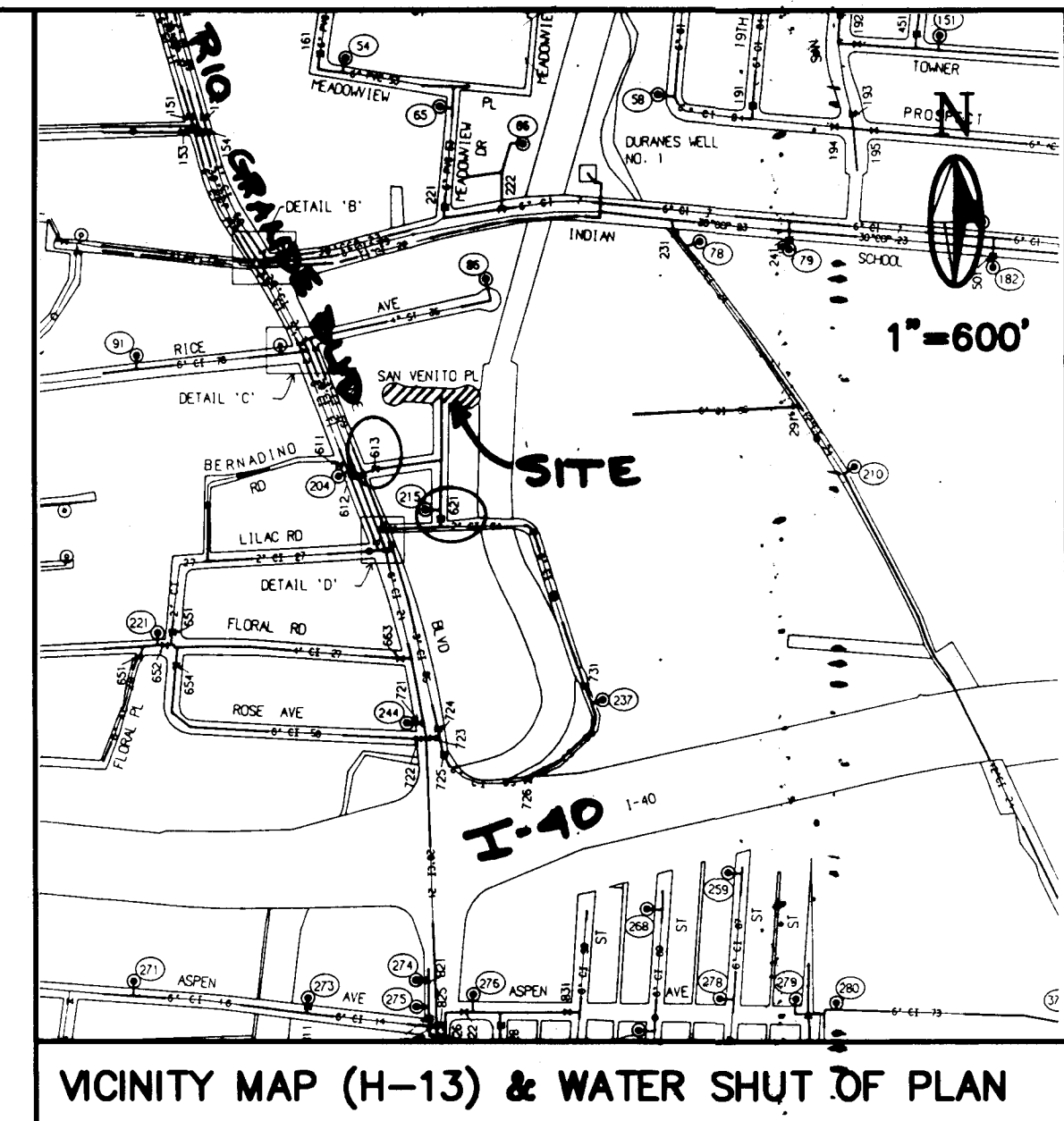


WATER SHUT OF PLAN:
SHUT OFF VALVE #613 AND VALVE #621 TO ISOLATE THE WATERLINE IN SAN VENITO ROAD.



GENERAL NOTES:

- ALL WORK DETAILED ON THESE PLANS TO BE PERFORMED UNDER CONTRACT SHALL, EXCEPT AS OTHERWISE STATED OR PROVIDED FOR HERON, BE CONSTRUCTED IN ACCORDANCE WITH THE "CITY OF ALBUQUERQUE, STANDARD SPECIFICATIONS FOR PUBLIC WORKS CONSTRUCTION, 1986" (COA STD), WITH UPDATES THROUGH #4.
- TWO (2) WORKING DAYS PRIOR TO ANY EXCAVATION, CONTRACTOR MUST CONTACT NEW MEXICO ONE CALL SYSTEM, 260-1990, FOR LOCATION OF EXISTING UTILITIES.
- PRIOR TO CONSTRUCTION, THE CONTRACTOR SHALL EXCAVATE AND VERIFY THE HORIZONTAL AND VERTICAL LOCATIONS OF ALL OBSTRUCTIONS. SHOULD A CONFLICT EXIST, THE CONTRACTOR SHALL NOTIFY THE ENGINEER OR SURVEYOR SO THAT THE CONFLICT CAN BE RESOLVED WITH MINIMUM AMOUNT OF DELAY.
- IF ANY UTILITY LINES, PIPELINES, OR UNDERGROUND UTILITY LINES ARE SHOWN ON THESE DRAWINGS, THEY ARE SHOWN IN AN APPROXIMATE MANNER ONLY, AND SUCH LINES MAY EXIST WHERE NONE ARE SHOWN. IF ANY SUCH EXISTING LINES ARE SHOWN, THE LOCATION IS BASED UPON INFORMATION PROVIDED BY THE OWNER OF SAID UTILITY, AND THE INFORMATION MAY BE INCOMPLETE, OR MAY BE OBSOLETE BY THE TIME CONSTRUCTION COMMENCES. THE ENGINEER HAS UNDERTAKEN NO FIELD VERIFICATION OF THE LOCATION, DEPTH, SIZE, OR TYPE OF EXISTING UTILITY LINES, PIPELINES, OR UNDERGROUND UTILITY LINES. THE CONTRACTOR SHALL INFORM HIMSELF OF THE LOCATION OF ANY UTILITY LINE, PIPELINE, OR UNDERGROUND UTILITY LINE IN OR NEAR THE AREA OF THE WORK IN ADVANCE OF AND DURING EXCAVATION WORK. THE CONTRACTOR IS FULLY RESPONSIBLE FOR ANY AND ALL DAMAGE CAUSED BY HIS FAILURE TO LOCATE, IDENTIFY AND PRESERVE ANY AND ALL EXISTING UTILITIES, PIPELINES, AND UNDERGROUND UTILITY LINES. IN PLANNING AND CONDUCTING EXCAVATION, THE CONTRACTOR SHALL COMPLY WITH STATE STATUTES, MUNICIPAL AND LOCAL ORDINANCES, RULES AND REGULATIONS, IF ANY, PERTAINING TO THE LOCATION OF THESE LINES AND FACILITIES.
- THE CONTRACTOR SHALL ASSIST THE ENGINEER/INSPECTOR IN THE RECORDING OF DATA ON ALL UTILITY LINES AND ACCESSORIES AS REQUIRED BY THE OWNERS FOR THE PREPARATION OF "RECORD DRAWINGS". THE CONTRACTOR SHALL NOT COVER UTILITY LINES AND ACCESSORIES UNTIL ALL DATA HAS BEEN RECORDED.
- REFERENCE MADE TO STANDARD DRAWINGS REFER TO THE CITY OF ALBUQUERQUE STANDARD DRAWINGS.
- ALL WORK ON THIS PROJECT SHALL BE PERFORMED IN ACCORDANCE WITH APPLICABLE FEDERAL, STATE AND LOCAL LAWS, RULES AND REGULATIONS CONCERNING CONSTRUCTION SAFETY AND HEALTH.
- ALL FITTINGS ON WATERLINES SHALL HAVE CONCRETE BLOCKING IN ACCORDANCE WITH CITY STD. DWG. 2320 OR RESTRAINED JOINTS TO DEVELOPMENT LENGTH OF WATERLINE DURING TESTING.
- ELECTRONIC MARKER DISCS SHALL BE PLACED IN ACCORDANCE WITH SECTION 170 OF THE CITY OF ALBUQUERQUE, STANDARD SPECIFICATIONS, PUBLIC WORKS CONSTRUCTION.
- WATERLINE 12" IN DIAMETER AND SMALLER MAY BE DUCTILE IRON OR PVC, C-900.
- ALL CONSTRUCTION WITHIN CITY RIGHT-OF-WAY OR EASEMENTS MUST BE DONE FROM APPROVED WORK ORDER DOCUMENTS FROM THE CITY OF ALBUQUERQUE AND PREPARED BY McDOWELL ENGINEERING, INC.
- THE CONTRACTOR SHALL COORDINATE ANY WATER VALVE SHUT-OFF OPERATION WITH THE CITY WATER SYSTEMS DIVISION (857-8200) NOT LESS THAN THREE (3) WORKING DAYS PRIOR TO INITIATING ANY WORK AFFECTING EXISTING WATER UTILITIES. SEE SECTION 18 OF THE GENERAL CONDITIONS.
- TRAFFIC CONTROL:
THREE (3) WORKING DAYS PRIOR TO BEGINNING CONSTRUCTION THE CONTRACTOR SHALL SUBMIT TO THE CONSTRUCTION CO-ORDINATION DIVISION A DETAILED CONSTRUCTION SCHEDULE. TWO (2) WORKING DAYS PRIOR TO CONSTRUCTION, THE CONTRACTOR SHALL OBTAIN A BARRICADING PERMIT FROM THE CONSTRUCTION CO-ORDINATION DIVISION. CONTRACTOR SHALL NOTIFY BARRICADE ENGINEER (768-2551) PRIOR TO OCCUPYING AN INTERSECTION. SEE SECTION 19 OF THE SPECIFICATIONS. ALL STREET STRIPING ALTERED OR DESTROYED SHALL BE REPLACED IN KIND BY CONTRACTOR TO LOCATION AND IN KIND AS EXISTING OR AS INDICATED BY THIS PLAN SET.

WATER SERVICE TABLE (3/4")
PER STD DWG. 2362

STATION	LENGTH	TYPE
11+30.51, 6.35' LT	19.44'	DOUBLE

SANITARY SEWER SERVICE TABLE
4" LINE PER STD. DWG 2125

STATION	LENGTH	INV. • EOL
11+20.31, 5.00' RT	40.79'	4956.00
11+60.32, 5.00' RT	40.79	4956.00

APPROVAL OF AS-BUILT DRAWINGS
WHITE CONSTRUCTION ENGINEER
James B. Smith
DATE: 5-22-95

McDowell Engineering, Inc.

CITY OF ALBUQUERQUE
PUBLIC WORKS DEPARTMENT
ENGINEERING GROUP

LEHMANN
WATER & SANITARY SEWER EXTENSION

APPROVALS	ENGINEER	DATE	APPROVALS	ENGINEER	DATE
D.R.C. CHAIR	<i>B.G. Smith</i>	8-10-94	WATER	<i>R.W. Kane</i>	7-29-94
TRANS. DEV.	<i>R. Kane</i>	8-10-94	WASTEWATER	<i>R.W. Kane</i>	7-29-94
HYDROLOGY	N/A				

DRAWING NO. 5001.90 MAP NO. H-13 SHEET 1 OF 1