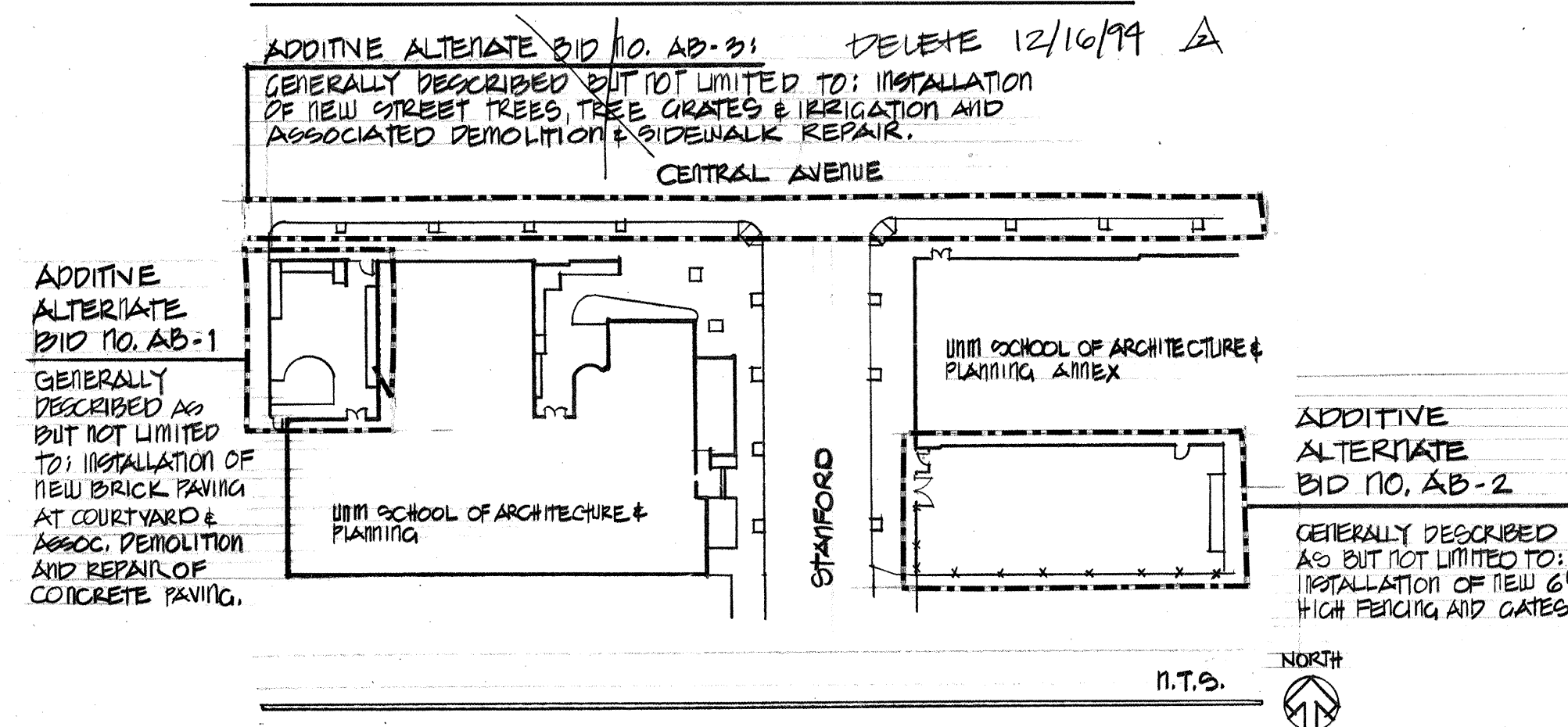


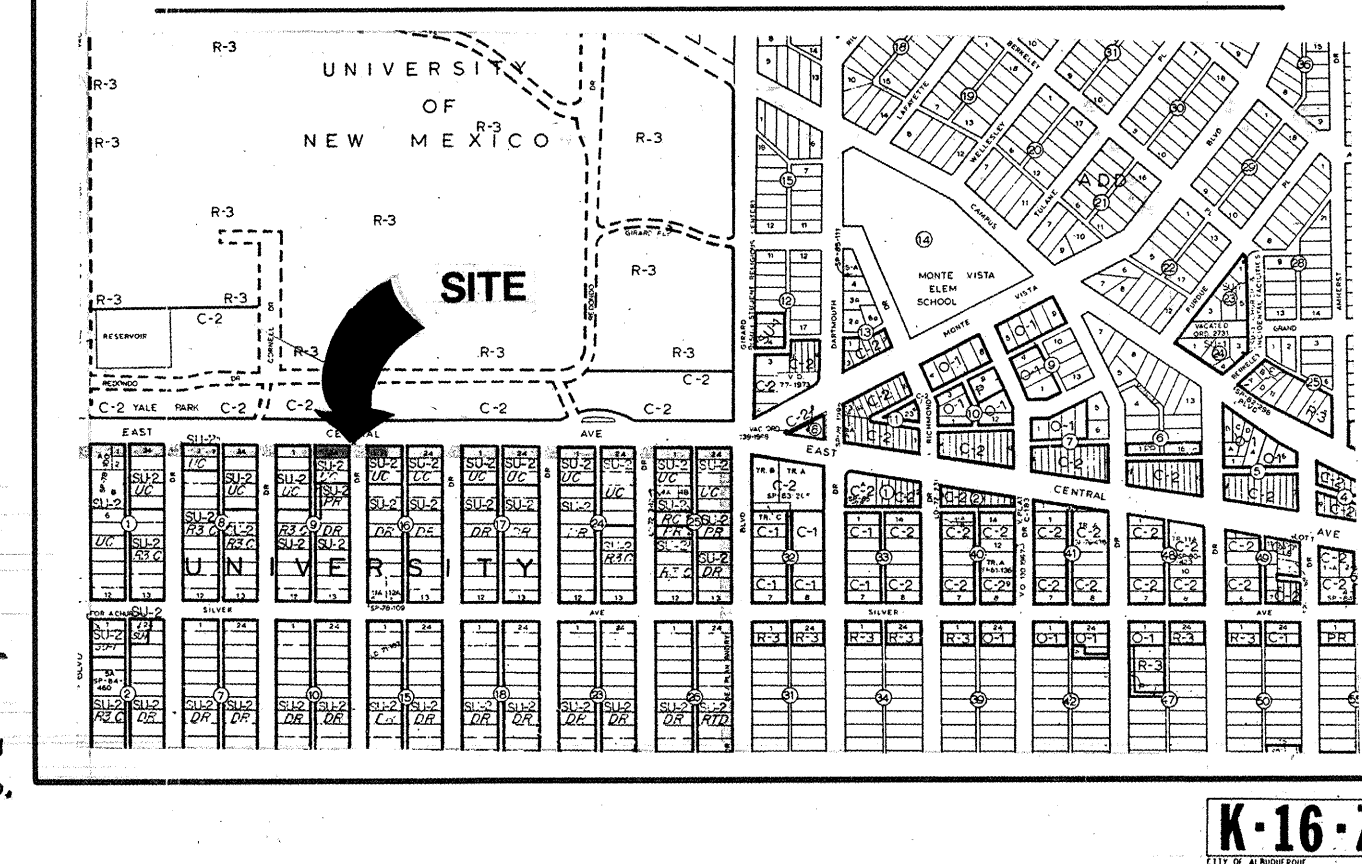
LANDSCAPE IMPROVEMENTS FOR THE UNIVERSITY OF NEW MEXICO SCHOOL OF ARCHITECTURE AND PLANNING

2414 CENTRAL AVE. S.E.
ALBUQUERQUE, NEW MEXICO

BIDDING PLAN

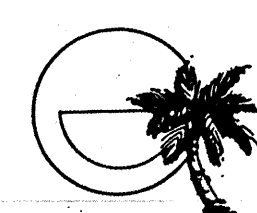
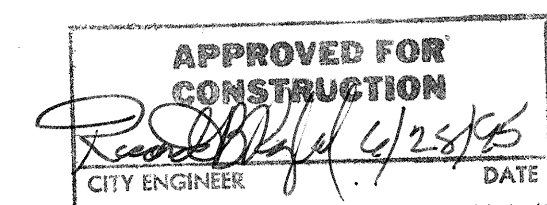


VICINITY MAP



INDEX OF DRAWINGS

- COVER SHEET
L-1 DEMOLITION & CONSTRUCTION PLAN & NOTES
L-2 IRRIGATION PLAN, LEGEND & NOTES
L-3 PLANTING PLAN, PLANT LIST & NOTES
L-4 IRRIGATION DETAILS
L-5 CONSTRUCTION & PLANTING DETAILS



MORROW & COMPANY
LANDSCAPE ARCHITECTS
210 La Veta Drive NE
Albuquerque, New Mexico 87108
505 268-2266

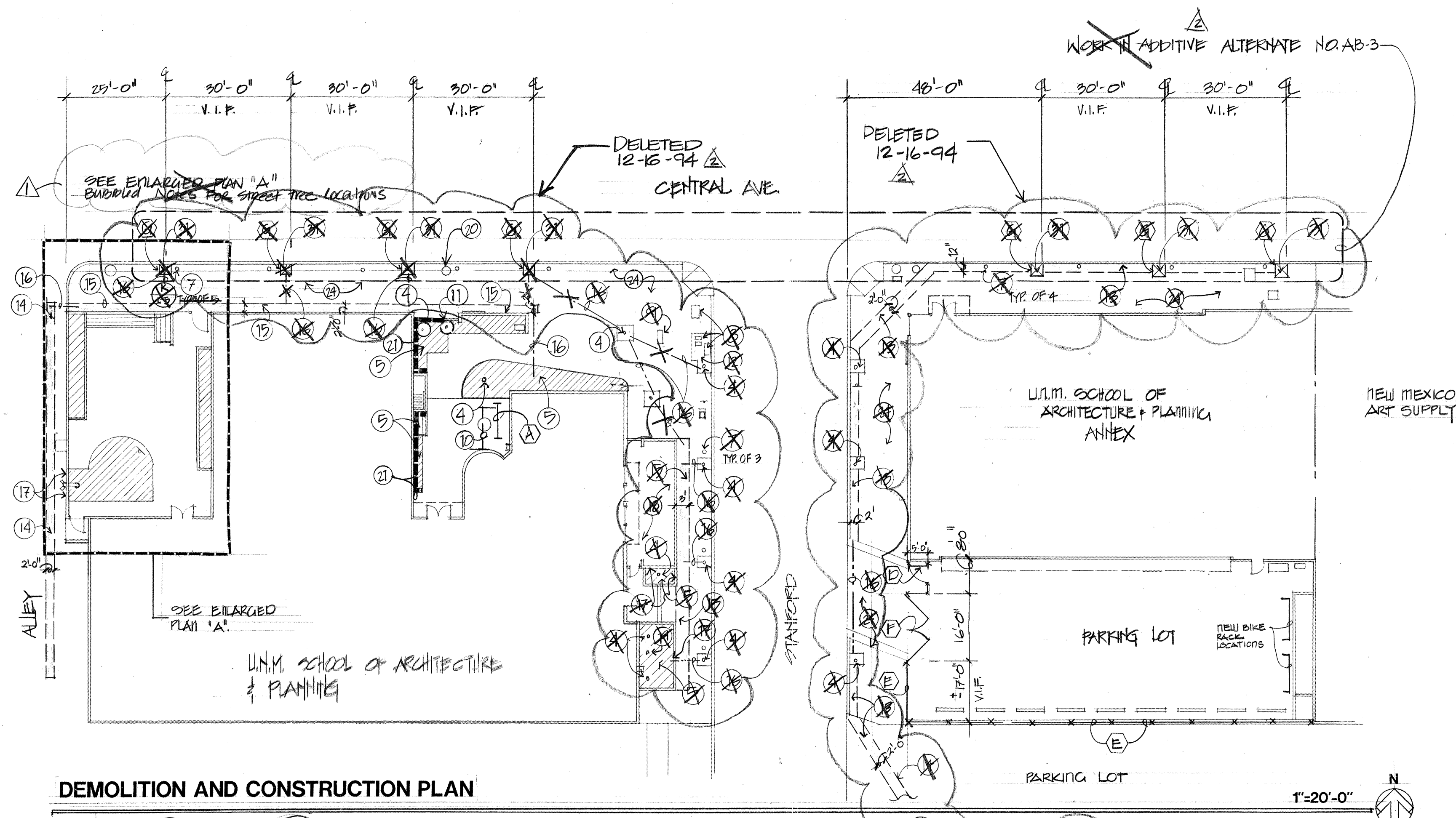
The **UNM**
University of New Mexico

UNM PROJECT NO. 7-10867

AS BUILT INFORMATION

CONTRACTOR	BACAS TREES
WORK STAGED BY	N/A
INSPECTOR'S ACCEPTANCE BY	ARU
FIELD VERIFICATION BY	BACAS TREES
DRAWINGS CORRECTED BY	BACAS TREES
RECORDED BY	
NO.	

CITY OF ALBUQUERQUE PUBLIC WORKS DEPARTMENT ENGINEERING GROUP					
TITLE: LANDSCAPE IMPROVEMENTS FOR THE UNIVERSITY OF NEW MEXICO SCHOOL OF ARCHITECTURE & PLANNING					
APPROVALS	ENGINEER	DATE	APPROVALS	ENGINEER	DATE
DRC CHAIRMAN	B. G. Gentry	12/22/94	WATER		
TRANSPORTATION	R. Gentry	12-03-94	WASTE WATER		
HYDROLOGY	H. Gentry	12/3/94			
PROJECT NO.	5091.90	MAP NO.	K-16	SHEET	1 OF 6



GENERAL NOTES

- CONTRACTOR SHALL VERIFY LOCATION OF ALL EXISTING UTILITIES PRIOR TO DEMOLITION AND CONSTRUCTION. ANY DAMAGE TO UTILITIES SHALL BE REPAIRED AT CONTRACTOR'S EXPENSE AND AT NO ADDITIONAL EXPENSE TO THE OWNER.
- CONTRACTOR SHALL REPAIR OR REPLACE ANY ITEMS TO REMAIN WHICH ARE DAMAGED DUE TO CONSTRUCTION OPERATIONS AT NO ADDITIONAL EXPENSE TO THE OWNER.

EQUIPMENT NOTES

BASE BID

A UNM STANDARD BIKE RACK MODEL #MP-4113 SECURITY BIKE RACK AS MANUFACTURED BY ARIZONA CORRECTIONAL INDUSTRIES, 1918 W. VAN BUREN, PHOENIX, AZ 85005, ATTENTION: NANCY ALLAIRE, (602) 265-1464. COLOR: BLACK POWDERCOAT FINISH.

ADDITIVE ALTERNATE NO. AB-1

B INSTALL (1) OWNER PROVIDED SINGLE PEDESTAL SQUARE TABLE IN CONCRETE FOOTING PER MANUFACTURER'S RECOMMENDATION.

C INSTALL (1) OWNER PROVIDED SINGLE PEDESTAL SQUARE TABLE IN CONCRETE FOOTING PER MANUFACTURER'S RECOMMENDATION.

ADDITIVE ALTERNATE NO. AB-2

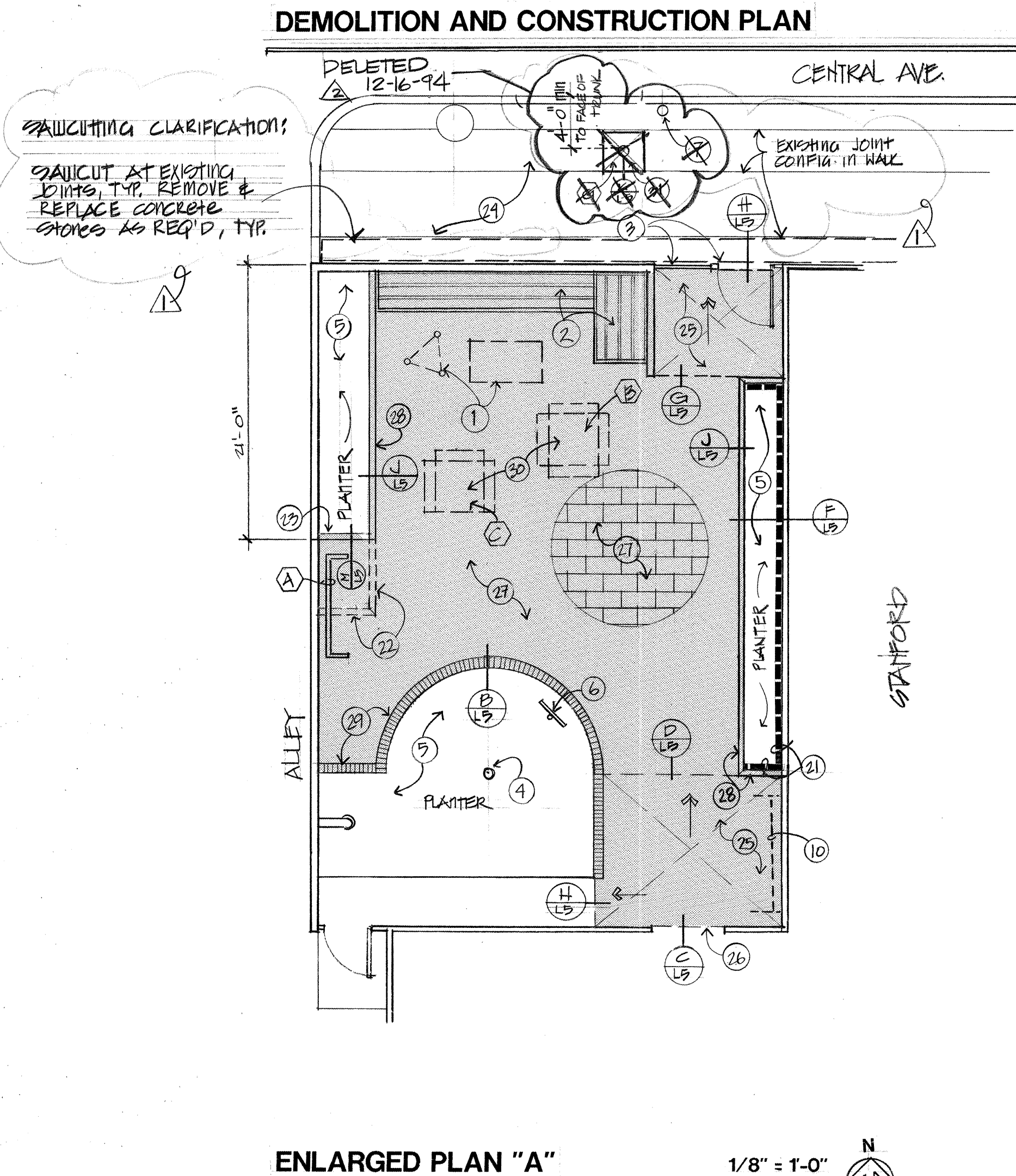
D 4' WIDE x 6' HIGH SWINGING GATE STYLE MATERIAL AND COLOR TO MATCH FENCING. INSTALL IN CONCRETE FOOTINGS PER MANUFACTURER'S RECOMMENDATIONS. PROVIDE COMPLETE WITH PANIC BAR AT INTERIOR SIDE AND CYLINDER LOCK AND PULL AT OUTSIDE. KEY CYLINDER TO MATCH EXISTING CYLINDER AT ANNEX.

E 6' HIGH POWDER COATED METAL FENCING AS MANUFACTURED BY OMEGA FENCE SYSTEMS INC. AND DISTRIBUTED BY NATIONAL WHOLESAL (1-800-367-5685) INSTALL ON EXISTING CONCRETE CURB AND IN NEW CONCRETE FOOTINGS PER MANUFACTURER'S RECOMMENDATION. COLOR: BLACK.

F PROVIDE A PAIR OF 6' H x 6' WIDE SWINGING GATES FOR VEHICLE ACCESS. STYLE, MATERIAL AND COLOR TO MATCHING FENCING. INSTALL IN CONCRETE FOOTINGS PER MANUFACTURER'S RECOMMENDATIONS. PROVIDE COMPLETE WITH METAL TABS FOR PADLOCK AND ROD. DRILL HOLE FOR ROD INTO EXISTING CONCRETE.

ADDITIVE ALTERNATE NO. AB-3

G MODEL B-TG729-1 36" x 36" SQUARE TREE GRATE AS MANUFACTURED BY BARRYCRAFT AND AS DISTRIBUTED BY H & H BUILDING PRODUCTS (905) 344-1747. INSTALL WITH FRAME IN CONCRETE SIDEWALK PER MANUFACTURER'S RECOMMENDATIONS.



- KEYED NOTES**
- BASE BID WORK**
- REMOVE EXISTING SCULPTURES AND SITE AMENITIES, STOCKPILE AND RE-INSTALL PER OWNER'S DIRECTION IN NEW FENCED AREA SOUTH OF ANNEX.
 - SAND AND REFINISH EXISTING WOOD BENCHES WITH 2 COATS OF CLEAR SEALER.
 - EXISTING METAL FENCE AND GATE TO REMAIN. PROTECT FROM DAMAGE DURING DEMOLITION AND CONSTRUCTION.
 - PROTECT EXISTING TREES OR SHRUB TO REMAIN DURING DEMOLITION, CONSTRUCTION AND PLANTING.
 - REMOVE ALL EXISTING PLANTINGS EXCEPT ITEMS NOTED OTHERWISE. PREPARE AREA TO RECEIVE NEW PLANTINGS AS SHOWN IN PLANTING PLAN.
 - PROTECT EXISTING SIGN TO REMAIN DURING DEMOLITION, CONSTRUCTION AND PLANTING.
 - EXISTING PARKING METER TO REMAIN. PROTECT FROM DAMAGE DURING DEMOLITION, CONSTRUCTION AND PLANTING. ANY DAMAGE SHALL BE REPAIRED AT CONTRACTOR'S EXPENSE.
 - EXISTING TRAFFIC SIGNAL EQUIPMENT TO REMAIN. PROTECT FROM DAMAGE DURING DEMOLITION, CONSTRUCTION AND PLANTING. ANY DAMAGE SHALL BE REPAIRED AT CONTRACTOR'S EXPENSE.
 - EXISTING PUBLIC PAY TELEPHONES TO REMAIN. PROTECT FROM DAMAGE DURING DEMOLITION, CONSTRUCTION AND PLANTING. ANY DAMAGE SHALL BE REPAIRED AT CONTRACTOR'S EXPENSE.
 - REMOVE EXISTING BIKE RACKS AND RE-INSTALL IN CONCRETE FOOTINGS SOUTH OF ANNEX BUILDING IN NEW FENCED AREA.
 - TRANSPLANT EXISTING JAPANESE BLACK PINE TO MAIN CAMPUS AS DIRECTED BY UNM DEPARTMENT OF FACILITY PLANNING.
 - ADD 4" DEPTH OF SHREDDED BARK IN SIGNAL PIT.
 - SAWCUT AND REMOVE EXISTING CONCRETE WALK, WIDTH AS SHOWN. PREPARE TO INSTALL NEW IRRIGATION LINES AND SLEEVES. SEE IRRIGATION DRAWINGS. REPAIR WALK WITH NEW CONCRETE. INSTALL FLUSH WITH EXISTING SURROUNDING SURFACES TO REMAIN. CONTRACTOR SHALL VERIFY ALL UTILITIES PRIOR TO SAW CUTTING, REMOVAL OF CONCRETE AND TRENCHING FOR IRRIGATION.
 - SAWCUT AND REMOVE EXISTING ASPHALT PAVING IN ALLEY, WIDTH AS SHOWN. PREPARE TO INSTALL NEW IRRIGATION LINES AND SLEEVES. SEE IRRIGATION DRAWINGS. REPAIR AREA WITH NEW CONCRETE. INSTALL FLUSH WITH SURROUNDING SURFACES TO REMAIN. INSTALL WITH BROOM FINISH AND TROWELLED EDGE TO MATCH EXISTING ADJACENT CONCRETE SIDEWALK. CONTRACTOR SHALL VERIFY ALL UTILITIES PRIOR TO REMOVAL OF CONCRETE AND TRENCHING FOR IRRIGATION.
 - REMOVE EXISTING CONCRETE SIDEWALK STONES, WIDTH AS SHOWN. PREPARE TO INSTALL NEW IRRIGATION LINES AND SLEEVES. SEE IRRIGATION DRAWINGS. REPAIR AREA WITH NEW CONCRETE. INSTALL FLUSH WITH SURROUNDING SURFACES TO REMAIN. CONTRACTOR SHALL VERIFY ALL UTILITIES PRIOR TO SAW CUTTING, REMOVAL OF CONCRETE AND TRENCHING FOR IRRIGATION.
 - PNEUMATIC BORE UNDER EXISTING CONCRETE SIDEWALKS AND DRIVES TO INSTALL IRRIGATION SLEEVES AND LINES IN THIS AREA. SEE IRRIGATION DRAWINGS. CONTRACTOR SHALL VERIFY ALL UTILITIES PRIOR TO CONSTRUCTION. WHERE PNEUMATIC BORING IS NOT POSSIBLE, CONTRACTOR SHALL REMOVE CONCRETE STONES AS REQ'D TO INSTALL NEW IRRIGATION SYSTEM AND SHALL REPLACE W/ NEW CONC. FINISH TO MATCH EXIST. ADJ. CONC.

- BORE THROUGH EXISTING STUCCOED PLANTER WALL AS REQUIRED TO INSTALL NEW IRRIGATION LINES AND SLEEVES. SEE IRRIGATION DRAWINGS. PROTECT PLANTER AND STUCCO FINISH FROM DAMAGE DURING CONSTRUCTION. REPAIR ANY DAMAGE TO WALL AND STUCCO FINISH AT NO COST TO THE OWNER. SEAL BORED OPENING WITH WATERPROOF SEALANT.
 - REMOVE AND RE-INSTALL EXISTING WOOD DECKING AS REQUIRED TO INSTALL NEW WHISKEY BARRELL PLANTERS AND NEW DRIP IRRIGATION SYSTEM. REINFORCE EXISTING DECK STRUCTURE AS REQUIRED TO SUPPORT NEW WHISKEY BARRELL PLANTERS.
 - REMOVE EXISTING AILANTHUS TREE.
 - EXISTING OVERHEAD STREET LIGHT AND OVERHEAD POWER LINES TO REMAIN.
 - INSTALL WATERPROOFING MEMBRANE AT BUILDING WALL. WRAP AROUND SIDES OF PLANTER AS SHOWN IN PLAN. SEE DETAIL F/L5.
 - SAWCUT AND REMOVE EXISTING CONCRETE CURB AS SHOWN. PREPARE AREA TO RECEIVE NEW CONCRETE SLAB. TOP OF SLAB SHALL BE FLUSH W/ ADJACENT SURROUNDING TOP OF SLAB.
 - INSTALL NEW CONCRETE CURBING AS SHOWN. TOP OF NEW CURB SHALL BE FLUSH WITH ADJACENT TOP OF CURB. SEE DETAIL M/L5.
 - EXISTING CONCRETE WALKS TO REMAIN PROTECT FROM DAMAGE DURING DEMOLITION, CONSTRUCTION AND PLANTING. ANY DAMAGE SHALL BE REPAIRED AT CONTRACTOR'S EXPENSE.
- ADDITIVE ALTERNATE NO. AB-1**
- SAWCUT AND REMOVE EXISTING CONCRETE. INSTALL NEW 4" CONCRETE SLAB AND BRICK PAVERS PER DETAIL D/L5. SLOPE AS REQUIRED TO MATCH ADJACENT GRADES. SLOPE SHALL NOT EXCEED 1 IN 20. TOP OF NEW BRICKS SHALL BE FLUSH WITH TOP OF ADJACENT BRICK OR CONCRETE TO REMAIN. PROVIDE EXPANSION JOINT WHERE NEW CONCRETE MEETS EXISTING ADJACENT SURFACES.
 - REMOVE EXISTING DOOR THRESHOLD AND RE-INSTALL AFTER BRICK HAS BEEN INSTALLED.
 - LAY BRICK IN RUNNING BOND (AS SHOWN IN INSERT) IN ALL SHADED AREAS.
 - LAY SAILOR COURSE OF BRICKS ALONG TOP OF PLANTER CURBING. MITER ALL CORNERS. SEE DETAIL J/L5.
 - LAY SAILOR COURSE OF BRICKS ALONG EDGE OF PLANTER BED AS SHOWN, SEE DETAIL B/L5.
 - REMOVE AND RELOCATE EXISTING PICNIC TABLES TO SOUTH OF ANNEX BUILDING IN NEW FENCED AREA. INSTALL NEW PICNIC TABLES IN CONCRETE FOOTINGS. NEW PICNIC TABLES TO BE SUPPLIED BY OWNER.
- ADDITIVE ALTERNATE NO. AB-3**
- SAWCUT AND REMOVE CONCRETE. PREPARE AREA TO RECEIVE NEW TREE GRATE. INSTALL TREE GRATE PER MANUFACTURER'S DIRECTION.

AS BUILT INFORMATION			
CONTRACTOR	BACAS TREES		
WORK STAKED BY	N/A	DATE	
INSPECTION ACCEPTANCE BY	AKU	DATE	10/95
FIELD VERIFICATION BY	BACAS TREES	DATE	10/95
DRAWINGS CORRECTED BY	BACAS TREES	DATE	10/95
MICRO-FILM INFORMATION			
RECORDED BY		DATE	
NO.			

12/16/94
DRC REVISIONS

(REVISIONS
PER D.R.C. REVIEW
COMMENTS 11/29/94)

DRAWN BY
EAC

CHECKED BY
EAC

DATE
10/14/94

STATE OF NEW MEXICO
BAKER H. MORROW
REGISTERED
LANDSCAPE ARCHITECT

MORROW & COMPANY, LTD.
LANDSCAPE ARCHITECTS
210 La Veta N.E.
Albuquerque, N.M. 87108
505 268-2266 FAX 505 265-9637

DEMOLITION & CONSTRUCTION PLAN

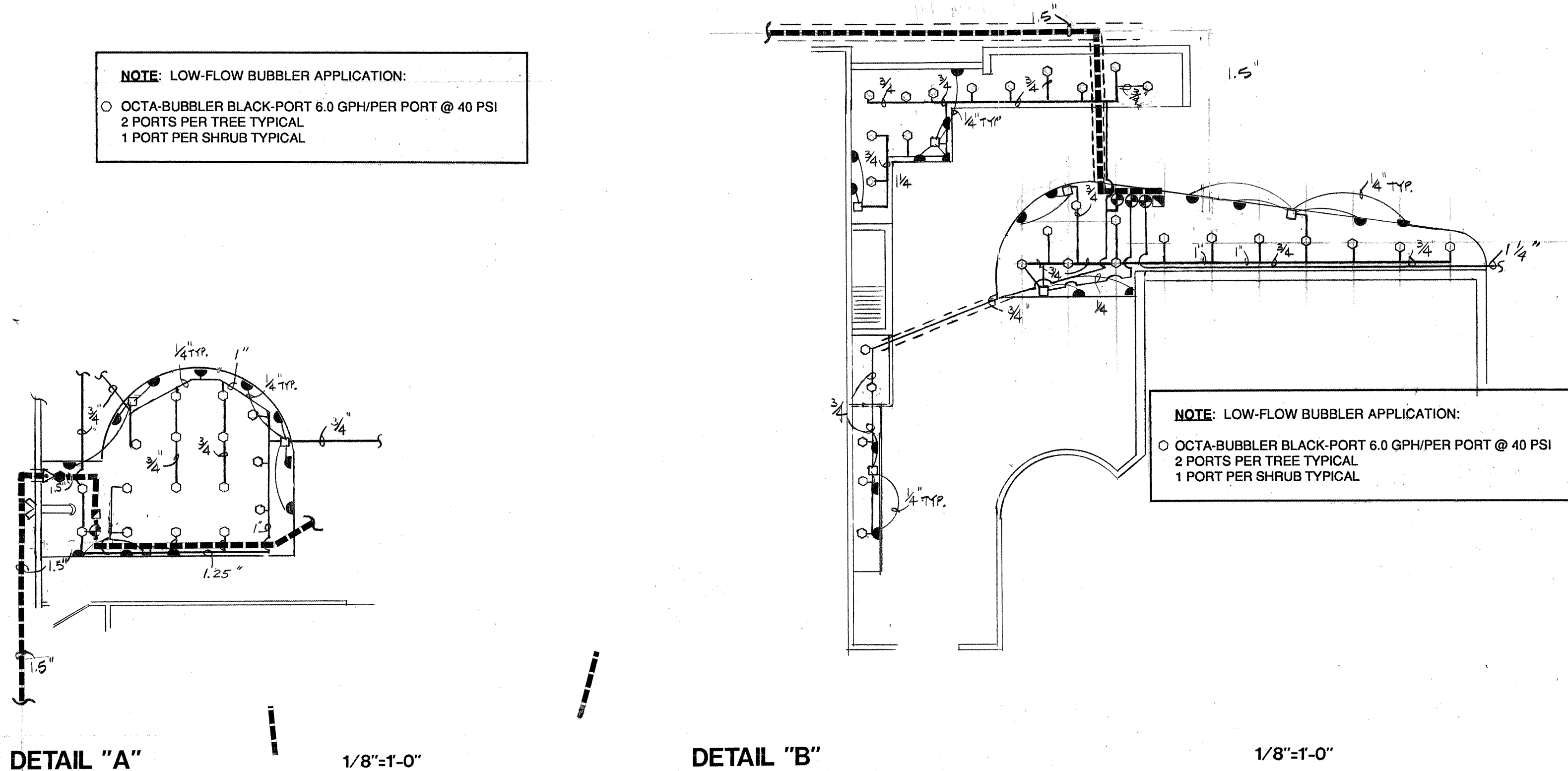
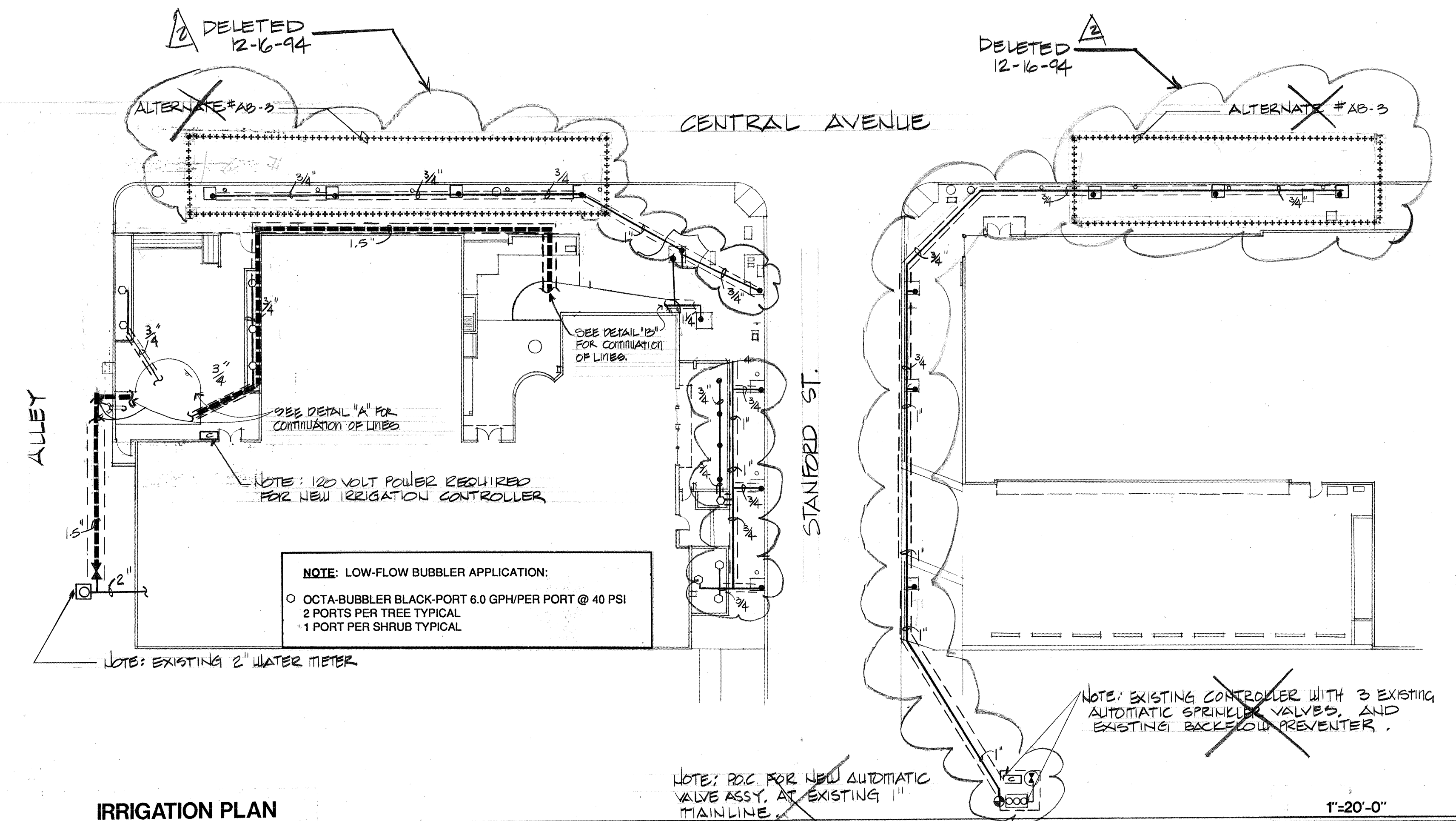
NOTES

LANDSCAPE IMPROVEMENTS FOR THE
UNM SCHOOL OF ARCHITECTURE & PLANNING
2414 CENTRAL AVE SE
ALBUQUERQUE, NEW MEXICO

SHEET NO.

L-1
1 of 5

CPN-5091.90



IRRIGATION LEGEND	
● PEPQO QB-2 BLUE PORT BUBBLER ASSEMBLY 2.0 GPH/PER PORT @ 40 PSI (2) PORTS PER TREE TYPICAL	SEE DETAIL A L4
□ PEPQO QB-2 GREEN PORT BUBBLER ASSEMBLY 20.0 GPH/PER PORT @ 40 PSI	SEE DETAIL A L4
▲ PEPQO MICRO-POP-UP SPRAY DEVICE #PMP-50 ASSEMBLY 90° MICRO SPRAY NOZZLE ADJUSTABLE RADIUS 180° MICRO SPRAY NOZZLE ADJUSTABLE RADIUS NOTE: CONNECT MICRO-SPRAY TO GREEN PORT BUBBLER ONLY	SEE DETAIL B L4
○ PEPQO OCTA BUBBLER BLACK-PORT (8 OUTLET PORTS) ASSEMBLY OCTA-BUBBLER BLACK-PORT 6.0 GPH/PER PORT @ 40 PSI	SEE DETAIL C L4
⊕ RAINBIRD 100-PEB 1" AUTOMATIC VALVE ASSEMBLY	SEE DETAIL D L4
⊞ RAINBIRD RCM-6 SERIES CONTROLLER ASSEMBLY	SEE DETAIL E L4
▽ FEBCO 825-Y-1.5" REDUCED PRESSURE BACKFLOW PREVENTER	SEE DETAIL F L4
● RAINBIRD 150-PEB 1.5" MASTER VALVE ASSEMBLY	SEE DETAIL G L4
■ HOTBOX #1 BACKFLOW ENCLOSURE	SEE DETAIL H L4
■ RAINBIRD 33 DNP W/33K AND SH-0 HOSE ADAPTER	SEE DETAIL I L4
1.5" SCH. 40 PVC MAINLINE BURY 28" SCH. 40 PVC LATERALS BURY 18"	
CL 200 PVC SLEEVE PIPE 2 SIZES LARGER THAN PIPE BEING SLEEVED CL 200 PVC SLEEVE 1-1/4" WIRE SLEEVE TYPICAL	

- IRRIGATION NOTES**
- ALL VALVE BOXES FOR AUTOMATIC VALVES SHALL BE INSTALLED AT A MINIMUM OF 12" FROM EDGES OF TURF.
 - ALL VALVE BOXES SHALL BE SUPPORTED BY CINDER BLOCKS, (MINIMUM 2 PER VALVE BOX). INSTALL BLOCKS IN A MANNER WHICH WILL PREVENT CONTACT WITH PIPING, WIRES, VALVES, ETC.
 - MARK ALL 24-VOLT WIRE ENDS WITH 3M STD-09 WIRE MARKER TAPE AT THE VALVE BOX AND CONTROLLER LOCATIONS.
 - ALL 24-VOLT WIRE SHALL BE MARKED WITH A 4" WIDE YELLOW MARKER TAPE AND MARKED "WARNING-ELECTRICAL". LAY MARKER TAPE HORIZONTALLY 6" ABOVE WIRE.
 - 24-VOLT WIRE SHALL BE IN COMMON TRENCH WITH MAINLINE AND SHALL HAVE SEPARATE SLEEVE WHERE CROSSING ALL HARD CONSTRUCTION. ALL SLEEVE PIPING FOR 24-VOLT WIRE SHALL BE 1-1/4" CLASS 200 PVC.
 - WHERE PROPOSED PIPING CROSSES EXISTING ASPHALT AND/OR CONCRETE, THE CONTRACTOR SHALL SAW-CUT, REMOVE AND PROPERLY DISPOSE OF WASTE, EXCAVATE, INSTALL SLEEVE PIPING, MAINS AND LATERALS, BACKFILL AND COMPACT TO 95%. CONTRACTOR SHALL REPLACE ASPHALT AND/OR CONCRETE TO MATCH EXISTING.
 - THE CONTRACTOR SHALL ADJUST ALL VALVES, LOW-FLOW BUBBLERS, AND MICRO-SPRINKLERS FOR OPTIMUM COVERAGE, AND SHALL PROVIDE AND INSTALL NOZZLES OTHER THAN THOSE SPECIFIED AS INSTRUCTED BY THE LANDSCAPE ARCHITECT AT NO ADDITIONAL COST TO THE OWNER.
 - CONTRACTOR SHALL INSTALL ALL LOW-FLOW BUBBLERS ON HIGH SIDE OF TREE WELLS.
 - CONTRACTOR SHALL TAPE CLOSED ALL SLEEVE PIPE OPENINGS USING DUCT TAPE TO PREVENT DEBRIS FROM ENTERING SLEEVES.
 - THE CONTRACTOR SHALL EXTEND 120-VOLT A.C. FROM EXISTING POWER TO PROPOSED CONTROLLER AND BACKFLOW PREVENTER LOCATIONS. ALL ELECTRICAL WORK SHALL BE PER LOCAL CODES AND N.E.C. STANDARDS.
 - ALL EXISTING DISTRIBUTION LINE LOCATIONS ARE SCHEMATIC. IT SHALL BE THE CONTRACTOR'S RESPONSIBILITY TO POT HOLE AND FIELD CHECK TO DETERMINE ACTUAL LOCATIONS AS AN INCIDENTAL REQUISITE TO THE CONSTRUCTION CONTRACT.
 - THE PROPOSED CONTROLLER LOCATION INDICATED ON THE PLANS IS APPROXIMATE. ACTUAL LOCATION OF THE CONTROLLER SHALL BE DETERMINED BY OWNER'S REPRESENTATIVE IN THE FIELD.
 - LOCATIONS OF ALL SLEEVE PIPING SHALL BE VERIFIED BY THE CONTRACTOR. EXCAVATION, POT-HOLING, ASSOCIATED WORK, MATERIALS, LABOR, ETC. SHALL BE THE RESPONSIBILITY OF THE CONTRACTOR. NO ADDITIONAL PAYMENT WILL BE MADE TO THE CONTRACTOR FOR LOCATING SLEEVES.
 - THIS SYSTEM WAS DESIGNED FOR 55 PSI STATIC WATER PRESSURE AND 25 GPM. SHOULD THE PRESSURE AND GALLONAGE BE LESS THAN THIS, NOTIFY THE LANDSCAPE ARCHITECT BEFORE PROCEEDING WITH THE INSTALLATION SO THAT ADJUSTMENTS CAN BE MADE IN THE PIPE SIZE. IF THE PRESSURE IS MUCH GREATER, NOTIFY THE LANDSCAPE ARCHITECT, AS A PRESSURE REDUCER MAY BE REQUIRED.

AS BUILT INFORMATION	
CONTRACTOR	BACAS TREES
WORK STAGED BY	N/A
INSPECTOR'S ACCEPTANCE BY	AEU
FIELD VERIFICATION BY	BACAS TREES
UNWANNED CONNECTED BY	BACAS TREES
RECORDED BY	
DATE	
MICRO-FILM INFORMATION	
NO.	
DATE	

12/16/94
DRC
REVISIONS

DRAWN BY
KLE

CHECKED BY
ECK

DATE
01/14/94

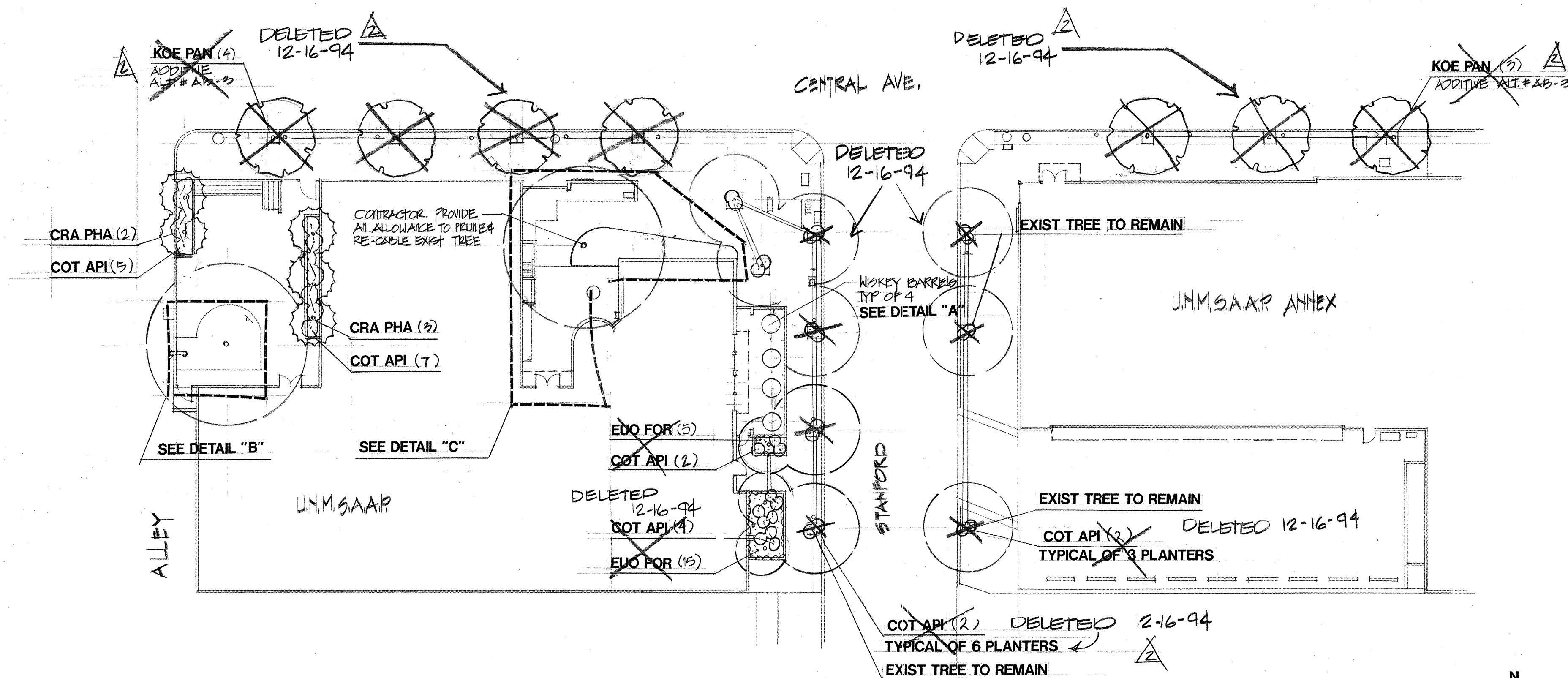
STATE OF NEW MEXICO
BAKER H. MORROW
NO. 2
REGISTERED
LANDSCAPE ARCHITECT

MORROW & COMPANY, LTD.
LANDSCAPE ARCHITECTS
210 La Veta N.E.
Albuquerque, N.M. 87108
505 268-2266 FAX 505 265-9637

IRRIGATION PLAN,
LEGEND & NOTES

LANDSCAPE IMPROVEMENTS FOR THE
UNM SCHOOL OF ARCHITECTURE & PLANNING
2414 CENTRAL AVE SE
ALBUQUERQUE, NEW MEXICO

SHEET NO.
L-2
2 of 5



PLANTING PLAN

1"=20'-0"



PLANTING NOTES

- IN CASE OF A DISCREPANCY IN PLANT QUANTITIES SHOWN ON THE PLANT LIST AND THOSE SHOWN ON THE PLANTING PLANS, THE QUANTITIES SHOWN THE PLANS SHALL GOVERN.
- QUANTITIES SHOWN ON THE PLANT LIST ARE ESTIMATES ONLY. CONTRACTOR SHALL VERIFY ALL QUANTITIES PRIOR TO BID AND INSTALLATION. NO ADDITIONAL PAYMENT WILL BE MADE FOR ANY DISCREPANCIES IN QUANTITIES BETWEEN THE PLANTING PLAN AND THE PLANT LIST.
- SEE SHEET L-5 FOR PLANTING DETAILS.
- A 3" DEPTH OF BARK MULCH SHALL BE INSTALLED THROUGHOUT ALL SHRUB BEDS WITH FILTER FABRIC BELOW. FILTER FABRIC SHALL BE MIN. 4 OZ. PER SY WOVEN POLYPROPYLENE FIBER, BLACK (DEWITT WEED BARRIER OR EQUAL) OVERLAY EDGES 6". TURN DOWN PERIMETER EDGES 6".
- THE CONTRACTOR SHALL PRUNE LOWER BRANCHES OF DECIDUOUS TREES TO 6 FEET ABOVE FINISH GRADE.
- IF THERE IS A DISCREPANCY IN FIELD OR NURSERY TREES BETWEEN THE CONTAINER SIZE CALLED OUT UNDER "REMARKS" AND THE CALIPER AND HEIGHT CALLED OUT UNDER "SIZE", THE SPECIFIED TREE MUST MEET THE CALIPER AND HEIGHT REQUIREMENTS SPECIFIED UNDER "SIZE," EVEN IF A LARGER CONTAINER SIZE IS REQUIRED TO MEET THESE SPECIFICATIONS, AT NO ADDITIONAL COST TO THE OWNER.
- CONTRACTOR SHALL DISTRIBUTE PLANTS EVENLY THROUGHOUT SHRUB BEDS.
- CONTRACTOR SHALL AMEND SOIL TO A DEPTH OF 6"-8" IN A MINIMUM 10' DIAMETER AROUND EXISTING TREES WITH BACKFILL MIXTURE.
- CONTRACTOR SHALL PROTECT EXISTING PLANTS TO REMAIN AND SHALL REPLACE PLANTS DAMAGED BY CONSTRUCTION OPERATIONS WITH PLANTS OF LIKE SPECIES AND SIZE.

AS BUILT INFORMATION

CONTRACTOR BACAS TREES	
WORK STAGED BY N/A	DATE
INSPECTOR'S ACCEPTANCE BY AKU	DATE 10/95
FIELD VERIFICATION BY BACAS TREES	DATE 10/95
DRAWINGS CORRECTED BY BACAS TREES	DATE 10/95
MICRO-FILM INFORMATION	
RECORDED BY	DATE
NO.	

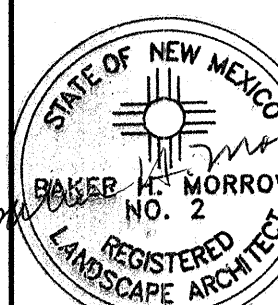
PLANTING PLAN, PLANT LIST & NOTES

LANDSCAPE IMPROVEMENTS FOR THE
UNM SCHOOL OF ARCHITECTURE & PLANNING
2414 CENTRAL AVE SE
ALBUQUERQUE, NEW MEXICO

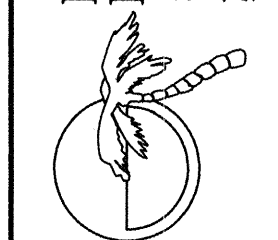
SHEET NO.

L-3
3 of 5

DRAWN BY
EAC
CHECKED BY
ER
DATE
12/14/94



MORROW & COMPANY, LTD.
LANDSCAPE ARCHITECTS
210 La Veta N.E.
ALBUQUERQUE, N.M. 87108
505 268-2266
505 265-9637

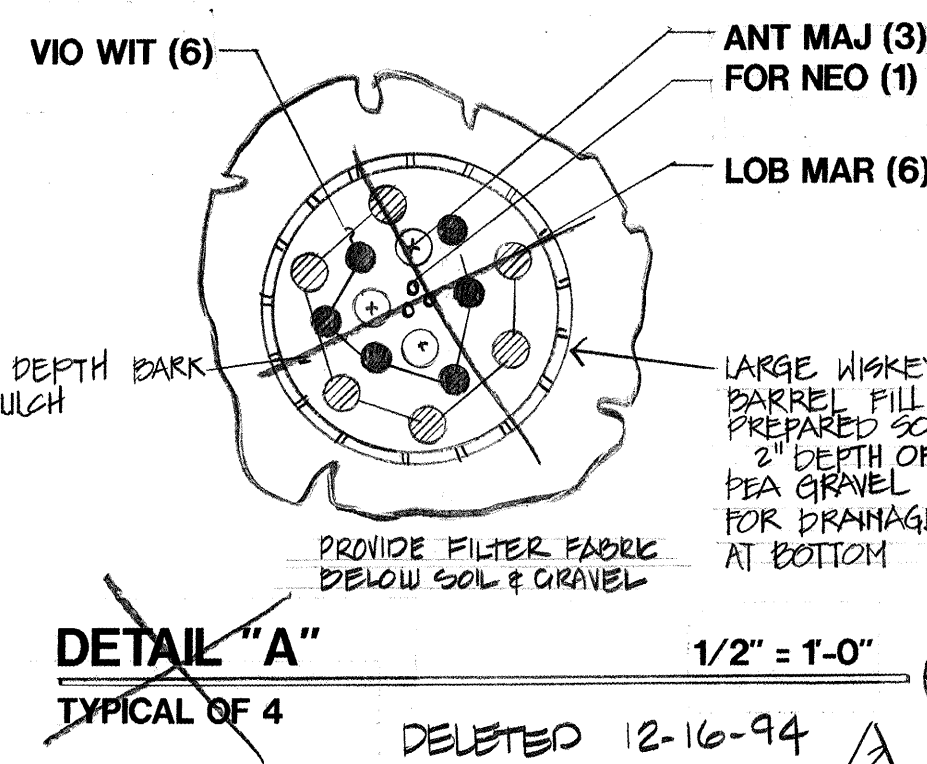


PLANT LIST

SYMBOL	BOTANICAL NAME	COMMON NAME	QUANTITY	INSTALLED	SIZE		REMARKS
					MATURE		
TREES							
CRA PHA	Crataegus phaenopyrum	Washington Hawthorn	6	8'-10' ht, 1-3/4" cal.	20' ht. and spd.		25 gallon
KOE PAN	Koeleruteria paniculata	Goldenrain Tree	7	10'-12' ht, 2" cal.	25' ht, 20" spd.		24" box (Add. Alt. A.B.-3)
SHRUBS							
ART FIL	Artemisia filifolia	Sand Sage	10	12" ht., 12" spd.	4' ht. and spd.		1 gallon
COR STO	Cornus stolonifera	Red Osier Dogwood	2	12" ht., 8" spd.	5' ht. and spd.		1 gallon
FOR NEO	Forestiera neomexicana	New Mexico Olive	9	24" ht., 24" spd.	13' ht., 10' spd.		5 gallon (Prune up to tree form)
ROB NEO	Robinia neomexicana	New Mexico Locust	3	24" ht. and spd.	13' ht., 10' spd.		5 gallon (Prune up to tree form)
GROUND COVER							
COT APT	Cotoneaster apiculatus	Cranberry Cotoneaster	51	8" ht and spd.	24" ht., 4" spd.		1 gallon
EUO FOR	Euonymus fortunei	Creeeping Euonymus	50	2" ht.	12" ht, 36" spd.		4" pot
POT TAB	Potentilla tabernaemontanii	Spring Cinquefoil	30	1" ht.	4" ht., 12" spd.		4" pot
SAN CHA	Santolina chamaecyparissus	Grey Santolina	25	8" ht and spd.	24" ht. and spd.		4" pot
FLOWERS - PERENNIALS							
DEL BEL	Delphinium belladonna	Delphinium	16	3" ht.	18" ht.		4 pack
RAT COL	Ratibida columnifera	Coneflower	10	3" ht.	24" ht.		4 pack
BULBS AND TUBE							
HEM	Hemerocallis	Daylily	15	Min. 8" ht.	18" ht.		Tubers
IRI RET	Iris reticulata	Iris	12	---	18" ht.		Bulbs, Purple color flower
NAR	Narcissus 'King Alfred'	Daffodil	36	---	18" ht.		Bulbs
FLOWERS - ANNUALS							
ANT MAJ	Antirrhinum majus	Snapdragon	12	3" ht.	12" ht.		6 pack
LOB MAR	Lobularia maritima	Alyssum	24	1" ht.	4" ht.		6 pack
VIO WIT	Viola wittrockiana	Pansy	24	3" ht.	6" ht.		6 pack

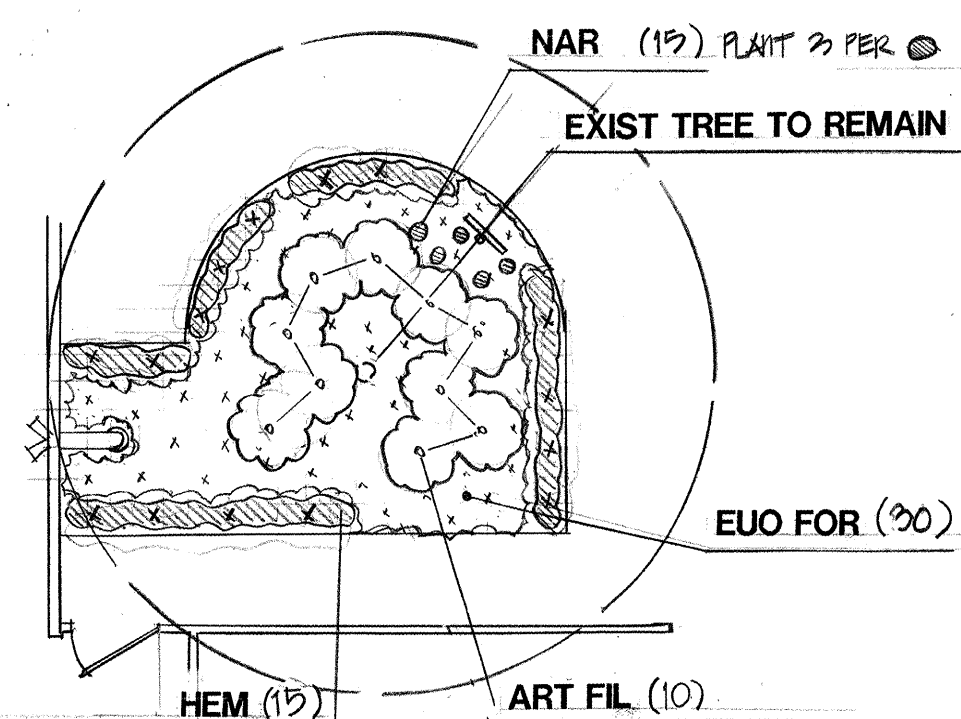
12/16/94
DRC
REVISIONS

5091.90
CPN-5091.90



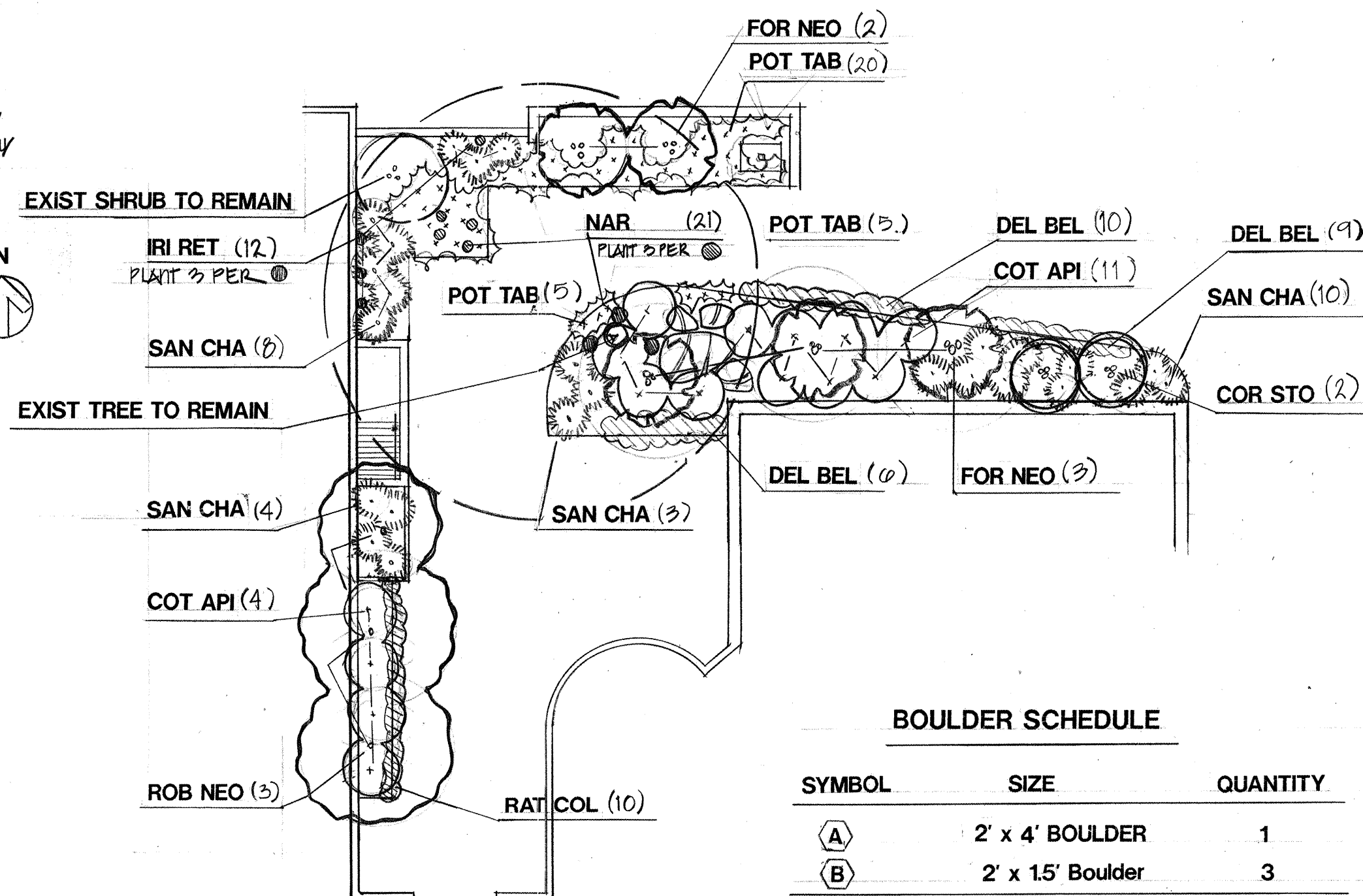
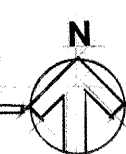
DETAIL "A"

1/2"=1'-0"



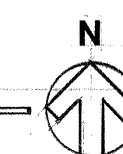
DETAIL "B"

1/8"=1'-0"



DETAIL "C"

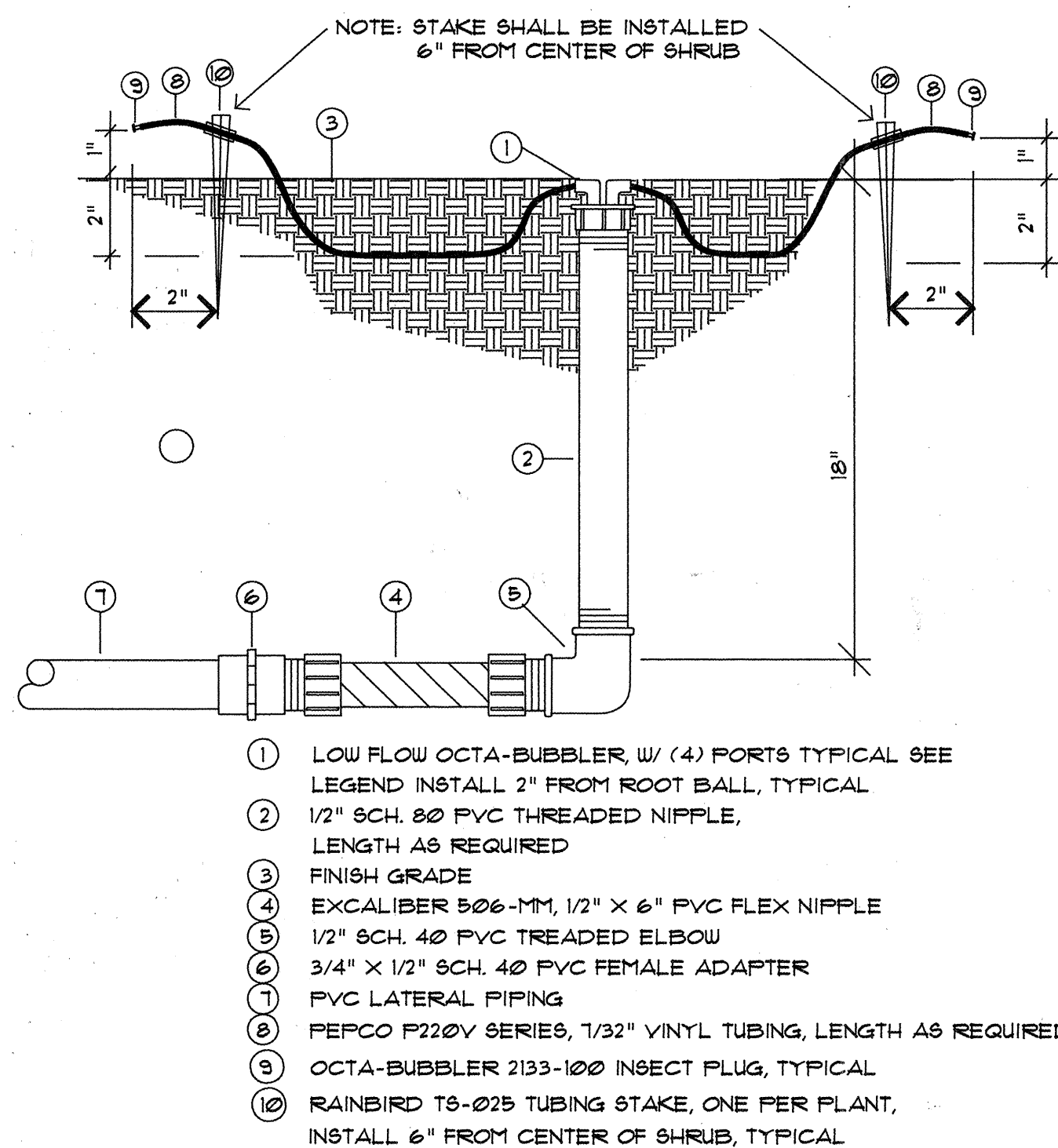
1/8"=1'-0"



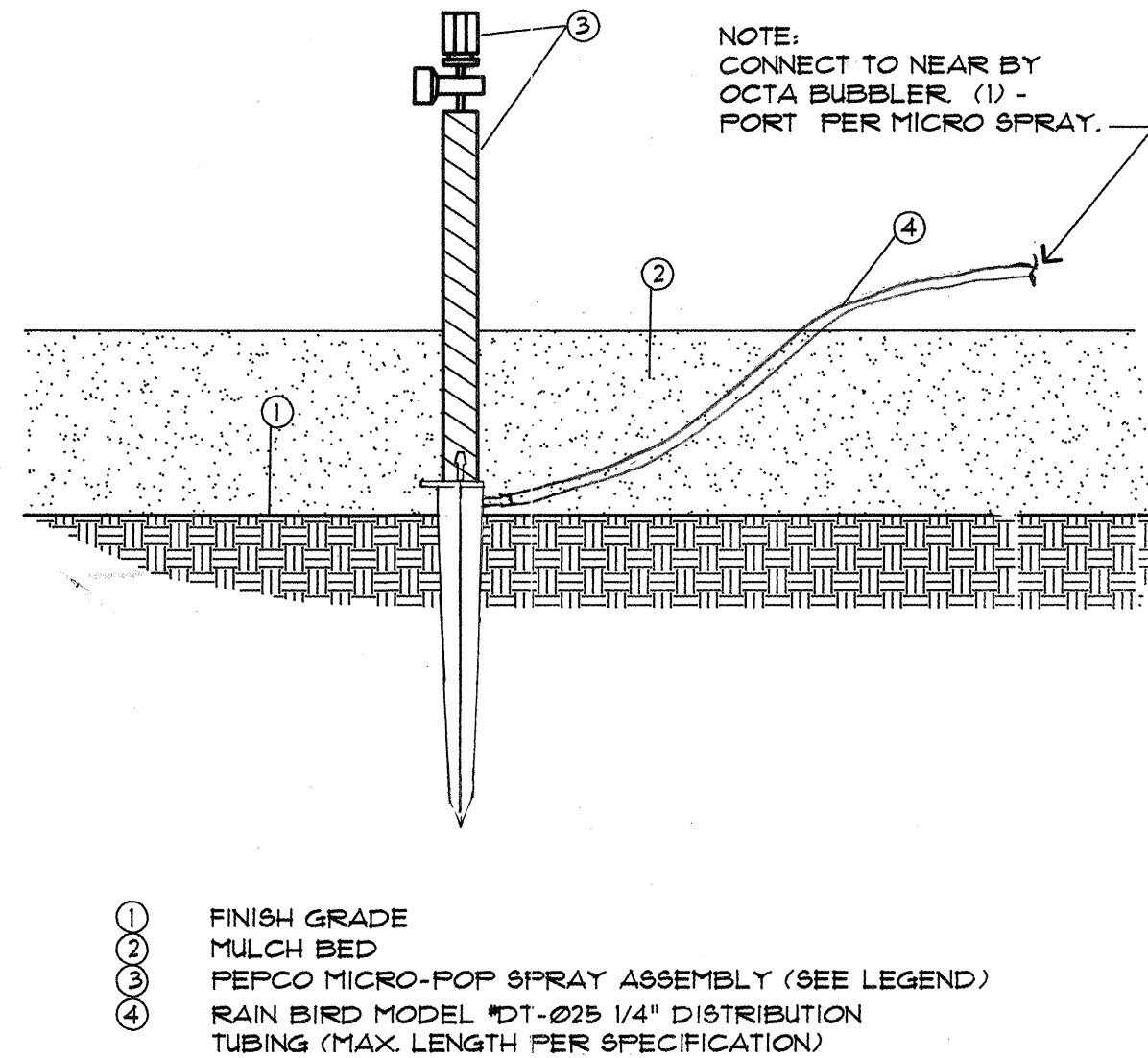
BOULDER SCHEDULE

SYMBOL	SIZE	QUANTITY
(A)	2' x 4' BOULDER	1
(B)	2' x 15' Boulder	3

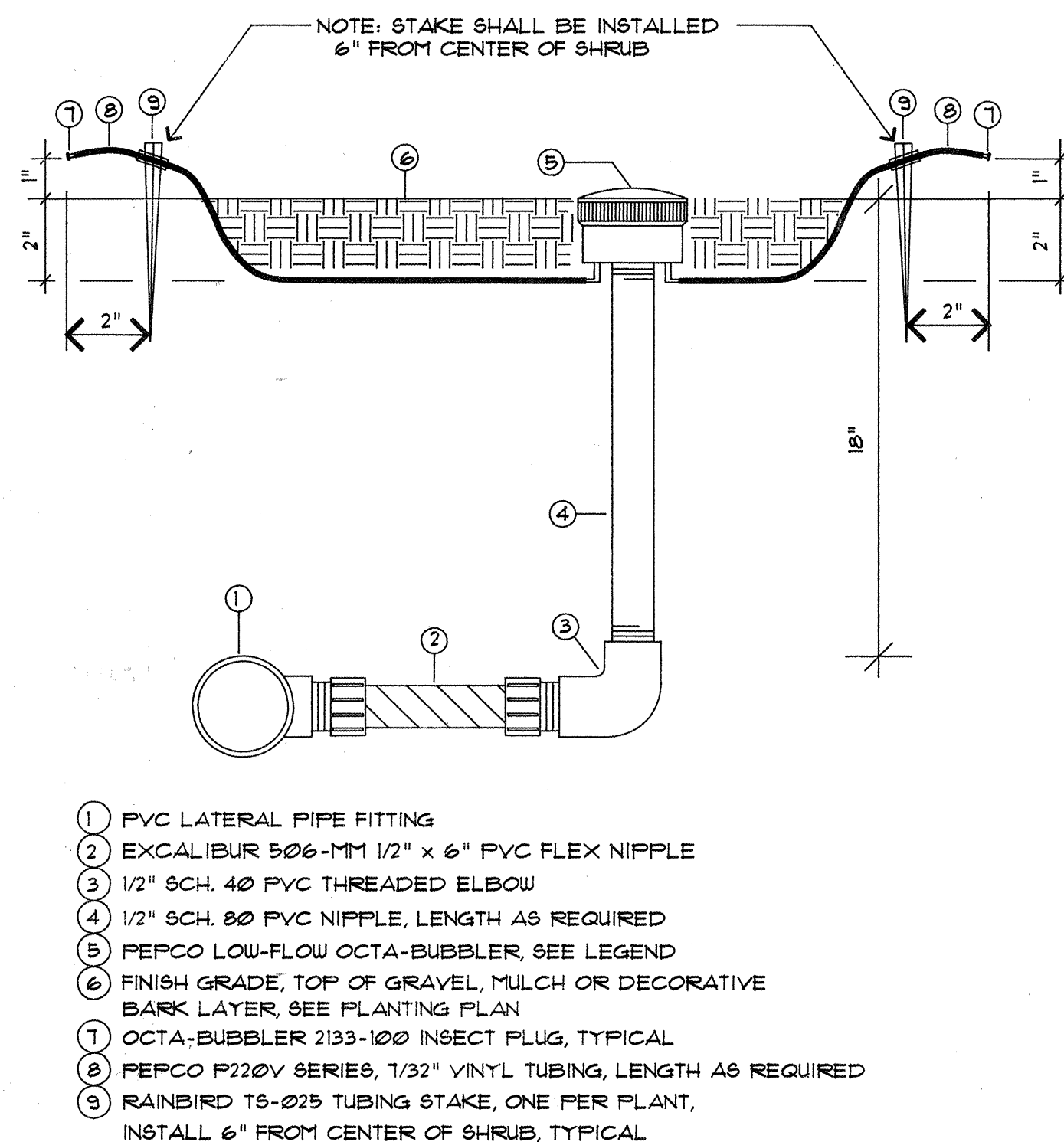
Moss Rock Boulders



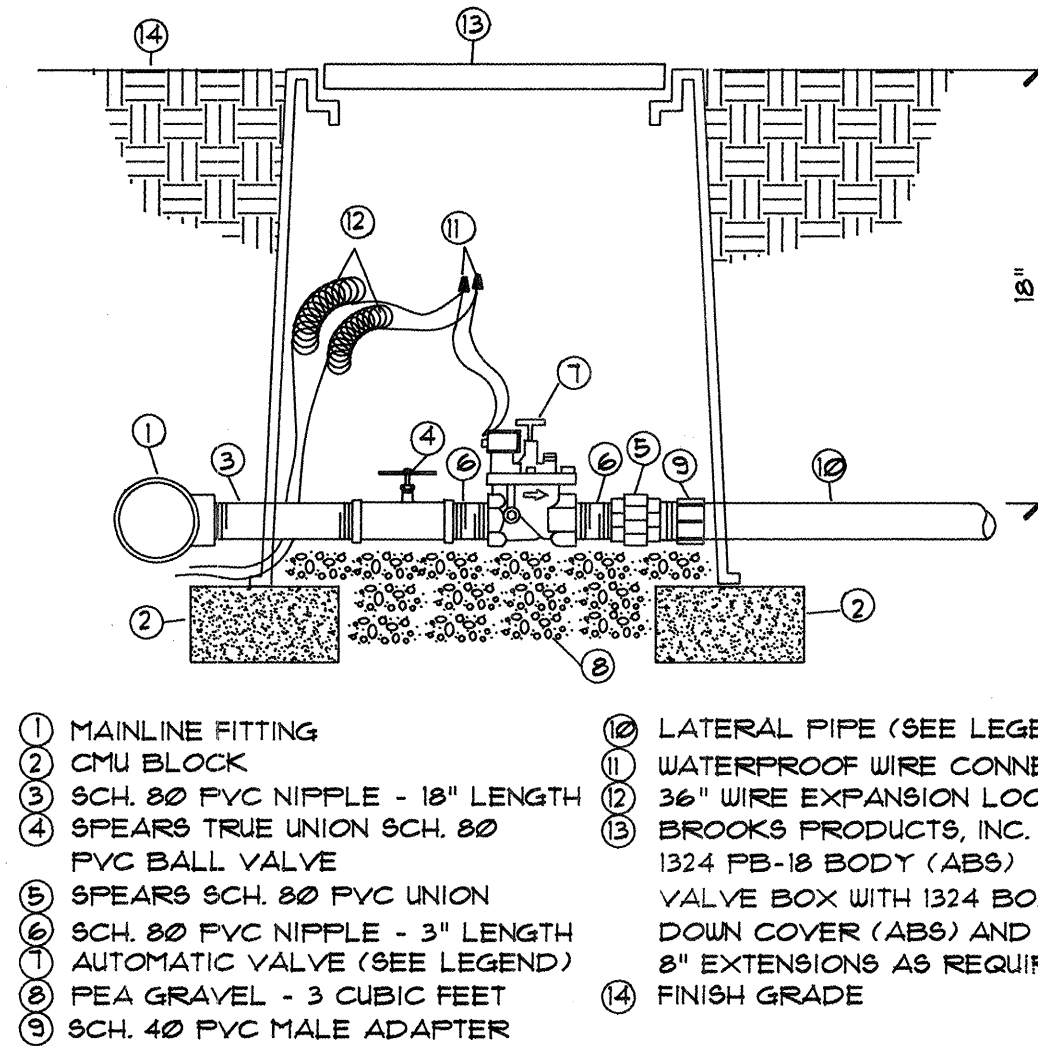
A LOW FLOW BUBBLER ASSEMBLY (4 PORTS)
MCD-0151 090194 N.T.S.



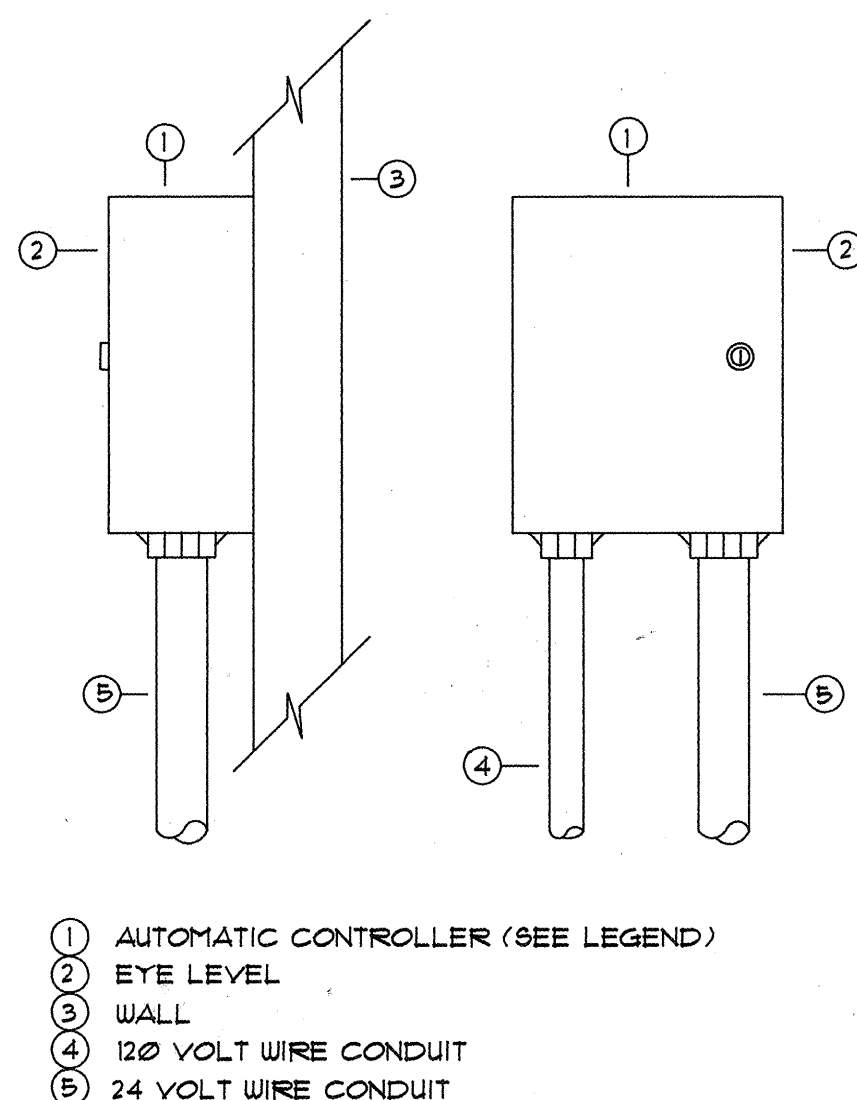
B DRIP MICRO -SPRAY SPRINKLER
MCD-0152 090194 N.T.S.



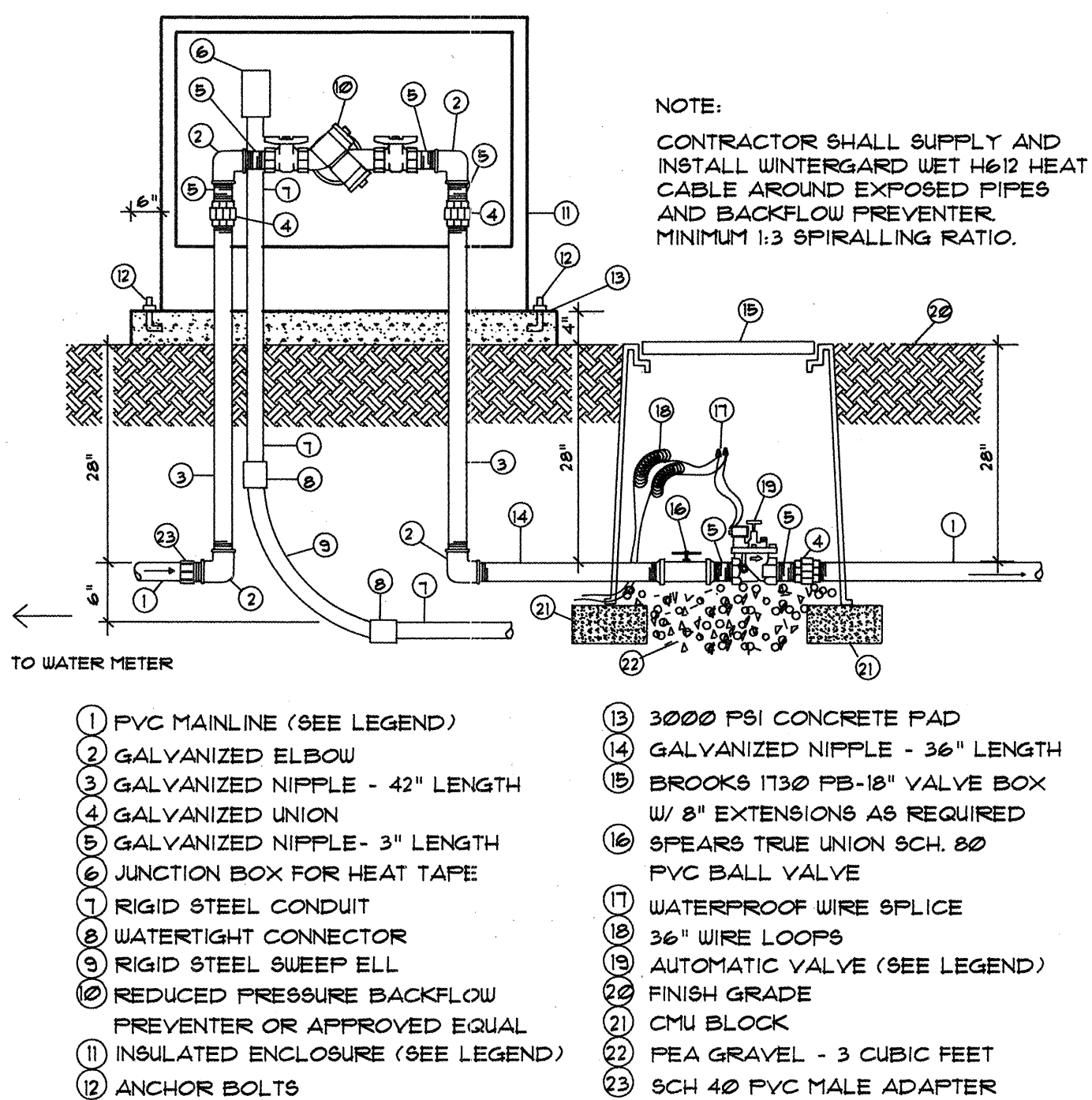
C LOW FLOW BUBBLER ASSEMBLY (8 PORTS)
MCD-0150 090194 N.T.S.



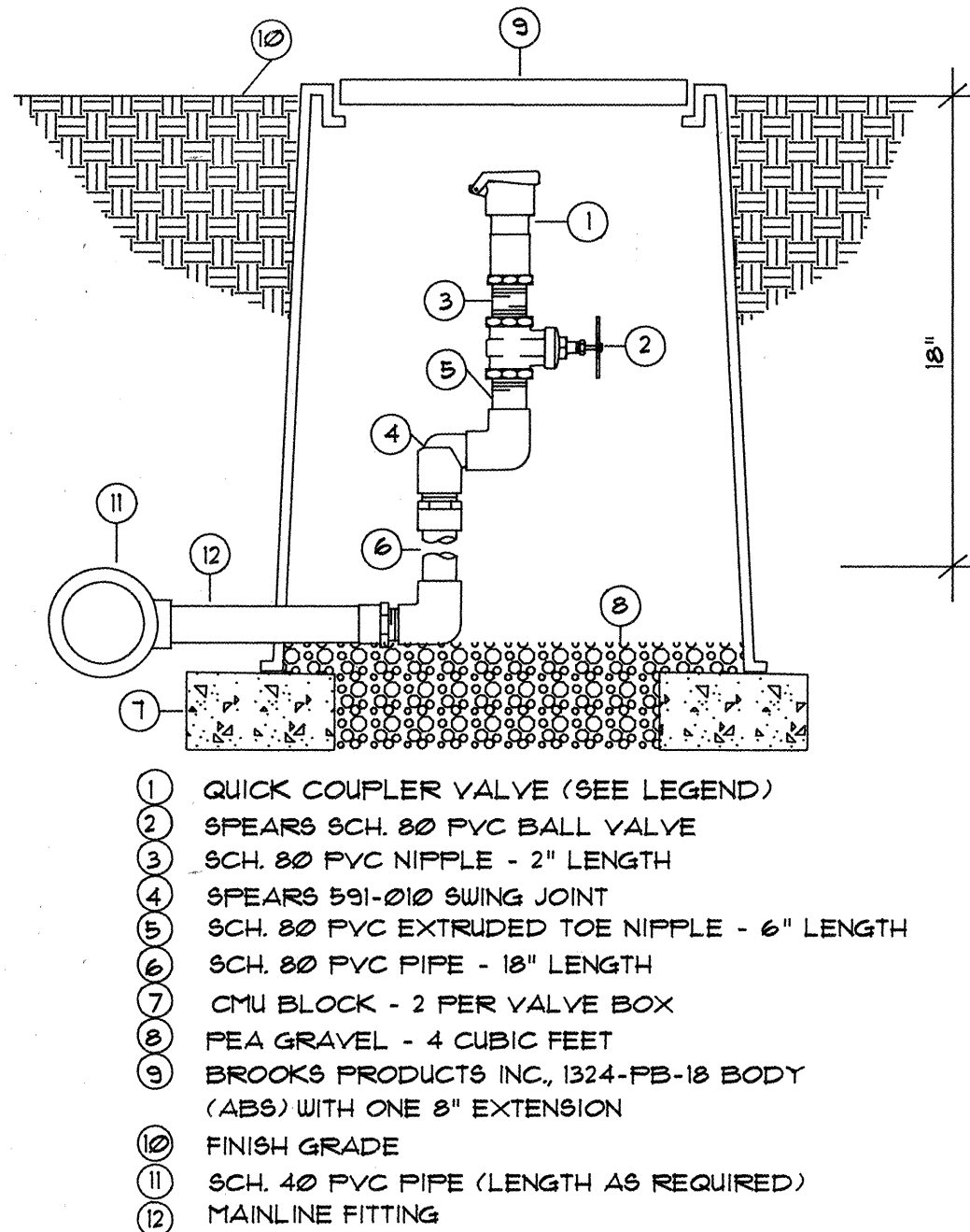
D AUTOMATIC VALVE ASSEMBLY
MCD-0013 061394 N.T.S.



E WALL MOUNT AUTOMATIC CONTROLLER
MCD-0016 010993 N.T.S.



F R.P. BACKFLOW PREVENTER & MASTER VALVE ASSEMBLY
MCD-0043 010993 N.T.S.



G QUICK COUPLER ASSEMBLY
MCD-0023 080294 N.T.S.

AS BUILT INFORMATION			
CONTRACTOR	BACAS TREES	DATE	
WORK STAGED BY	N/A	DATE	
INSPECTOR'S ACCEPTANCE BY	ARU	DATE	10/95
FIELD VERIFICATION BY	BACAS TREES	DATE	10/95
DRAWINGS CORRECTED BY	BACAS TREES	DATE	10/95
MICRO-FILM INFORMATION			
RECORDED BY		DATE	
NO.			

DRAWN BY
KLE

CHECKED BY
ECR

DATE
10/14/94

STATE OF NEW MEXICO
BAKER H. MORROW
NO. 2
REGISTERED
LANDSCAPE ARCHITECT

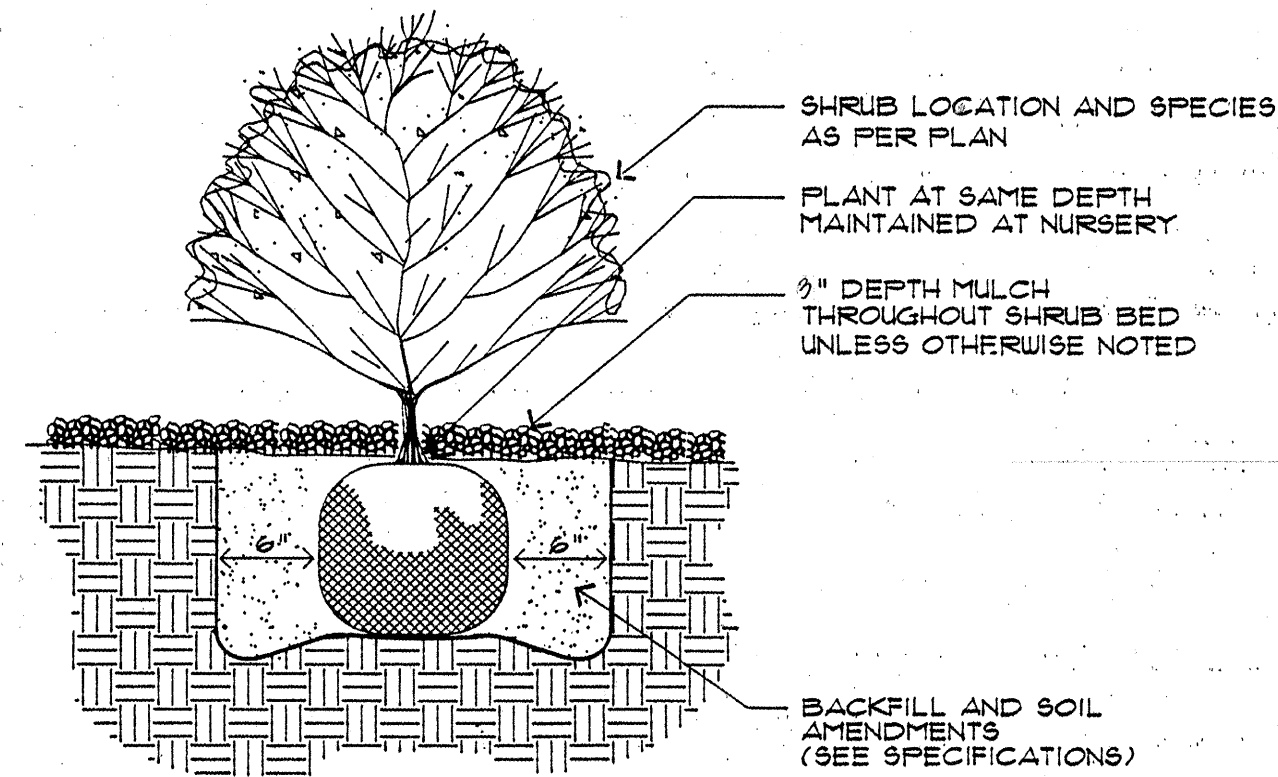
MORROW & COMPANY, LTD.
LANDSCAPE ARCHITECTS
210 La Veta N.E.
ALBUQUERQUE, N.M. 87108
505 268-2266 FAX 505 265-9637

LANDSCAPE IMPROVEMENTS FOR THE
UNM SCHOOL OF ARCHITECTURE & PLANNING
2414 CENTRAL AVE SE
ALBUQUERQUE, NEW MEXICO

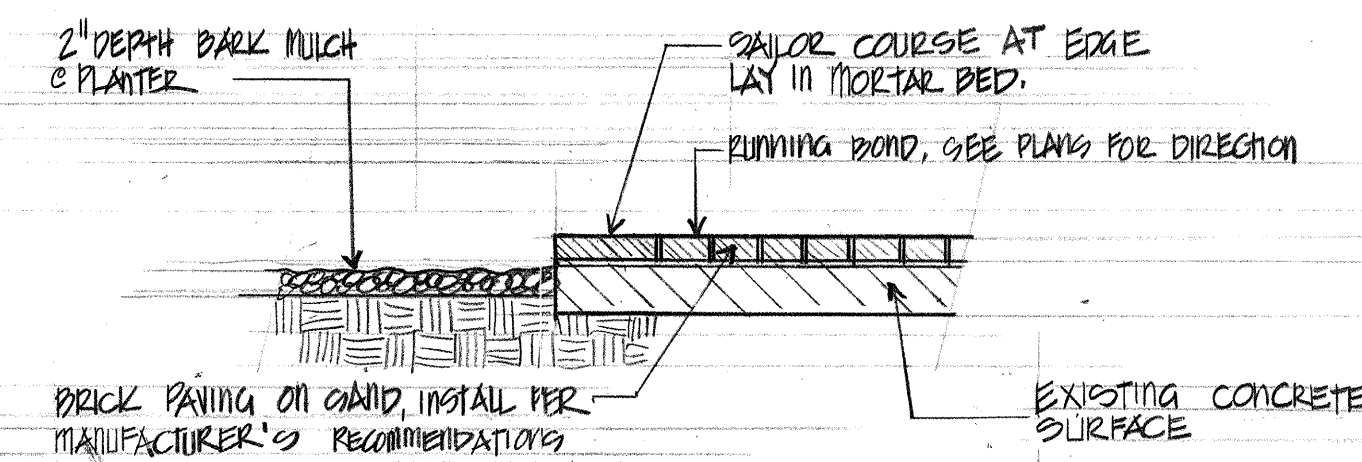
IRRIGATION DETAILS

SHEET NO.

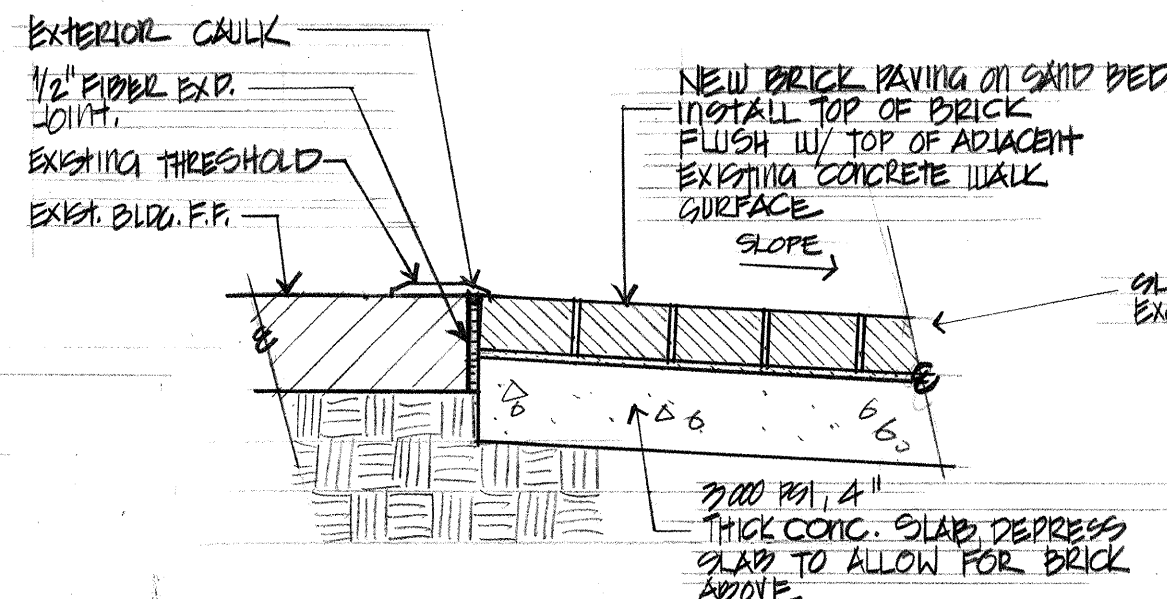
L-4
4 of 5



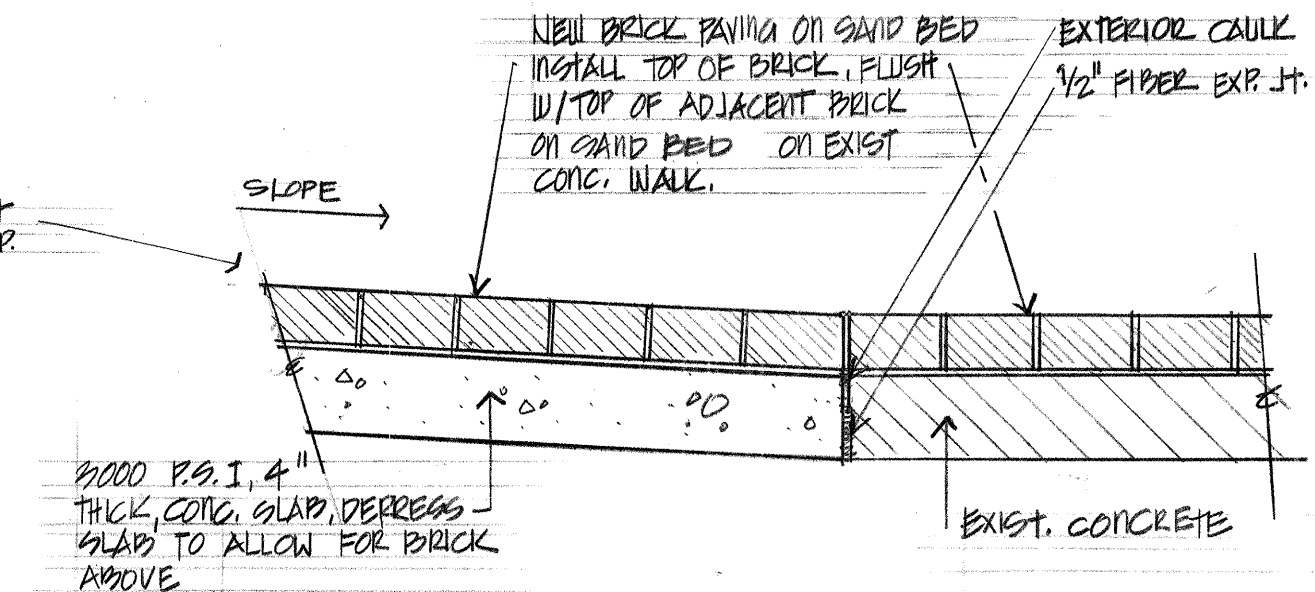
A SHRUB PLANTING DETAIL
L-5 MCD-0004 070893 N.T.S.



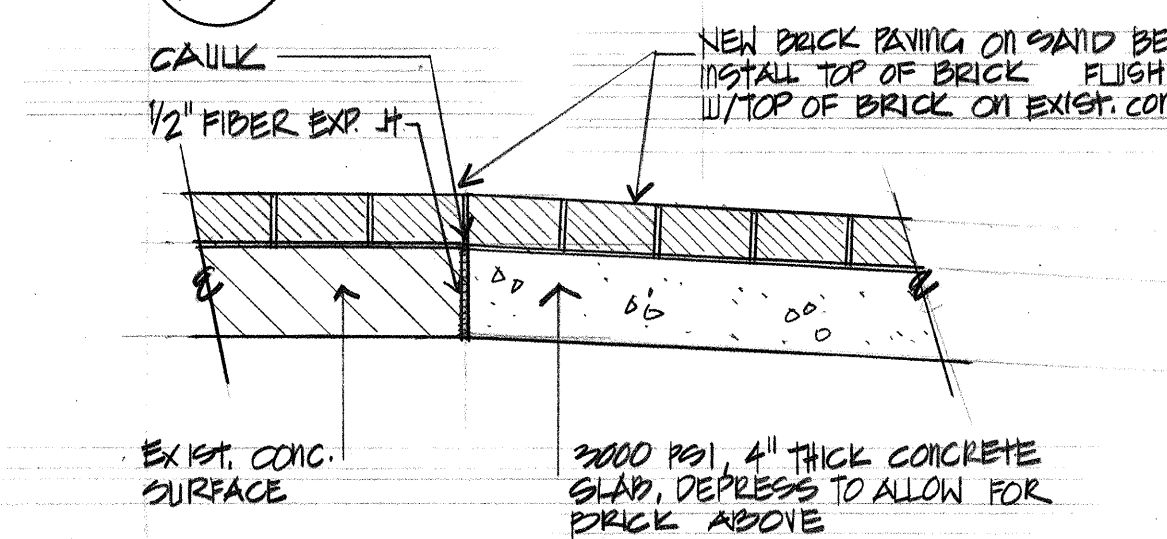
B BRICK PAVING EDGE DETAIL
L-5 3/4"



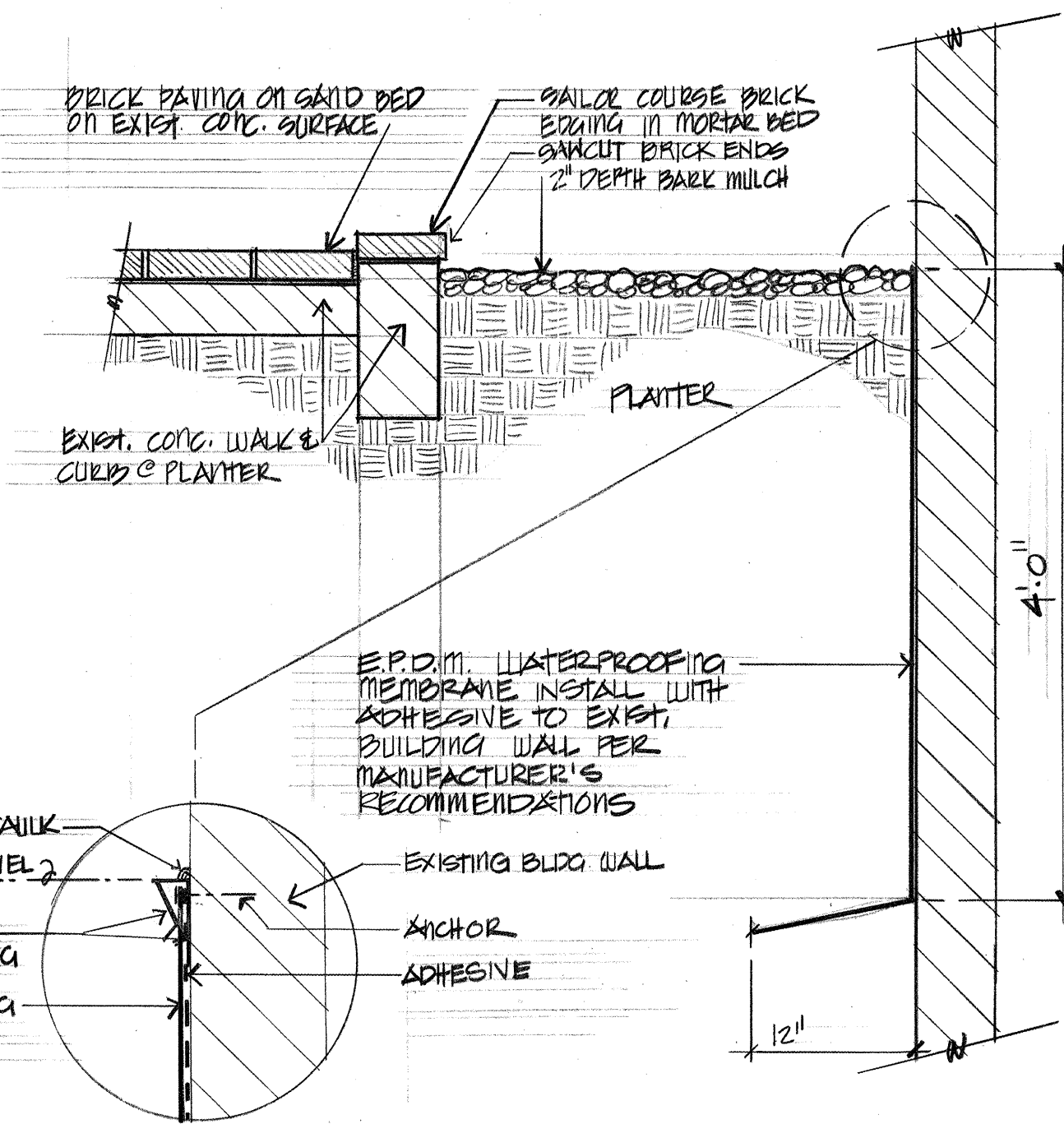
C BRICK PAVING DETAIL
L-5 1/2"



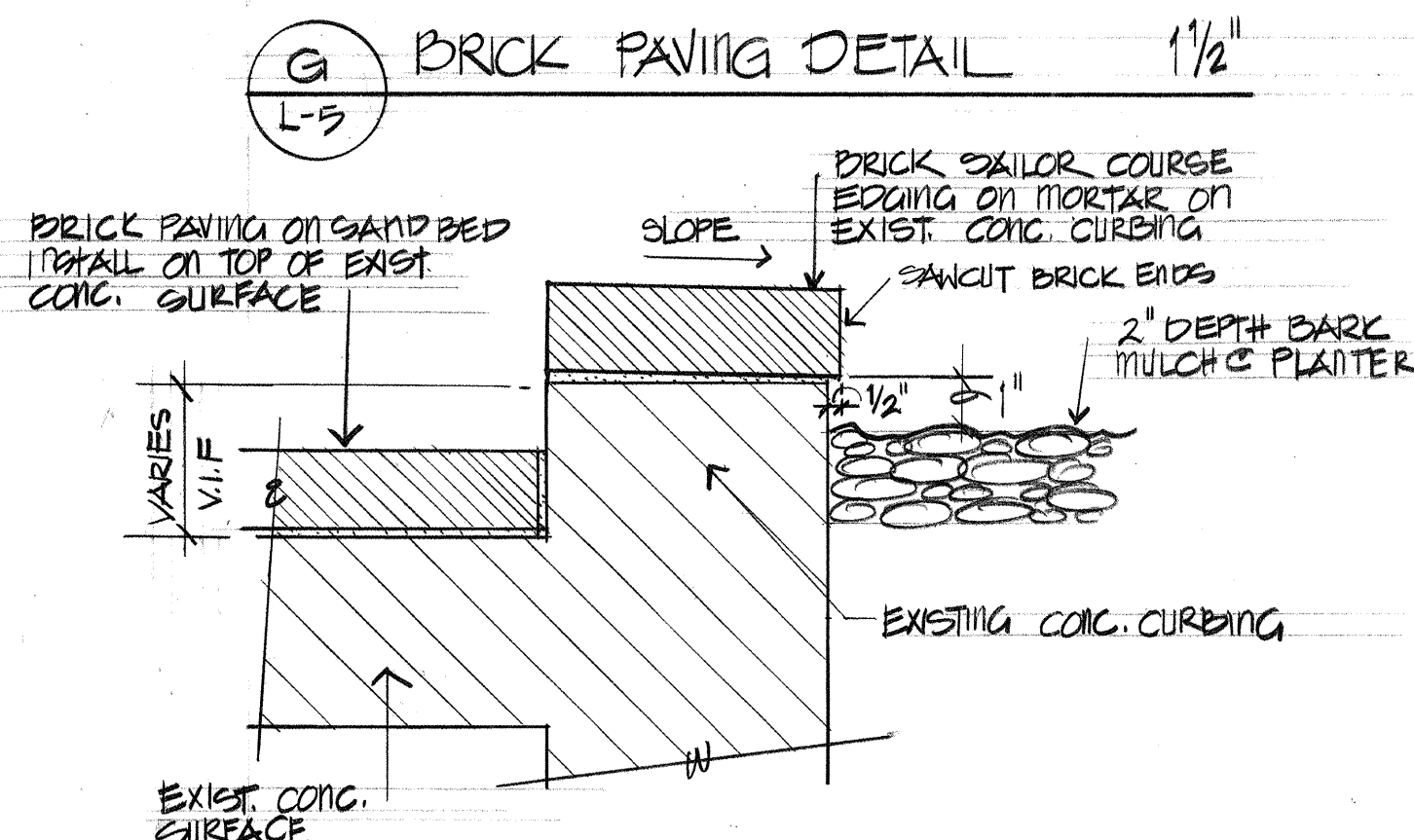
D BRICK PAVING DETAIL
L-5 1/2"



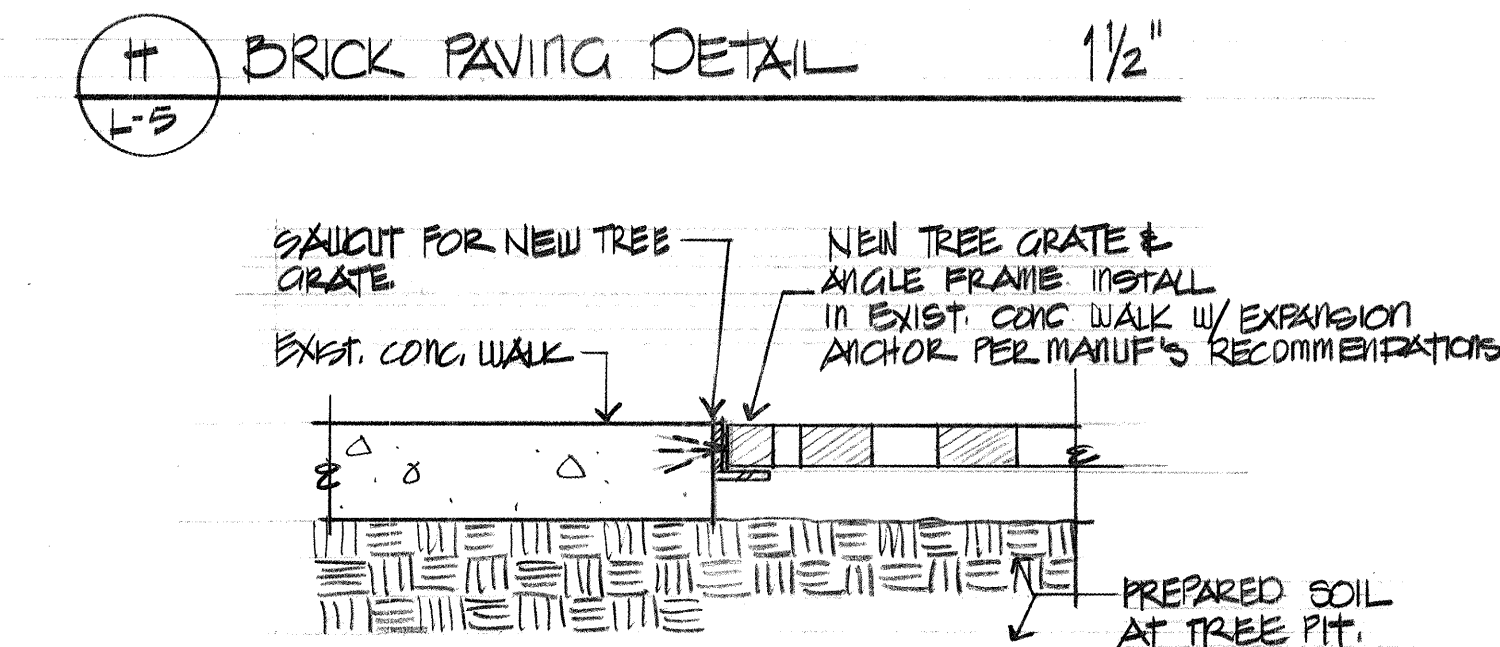
E TREE PLANTING DETAIL
L-5 MCD-0007 040794 N.T.S.



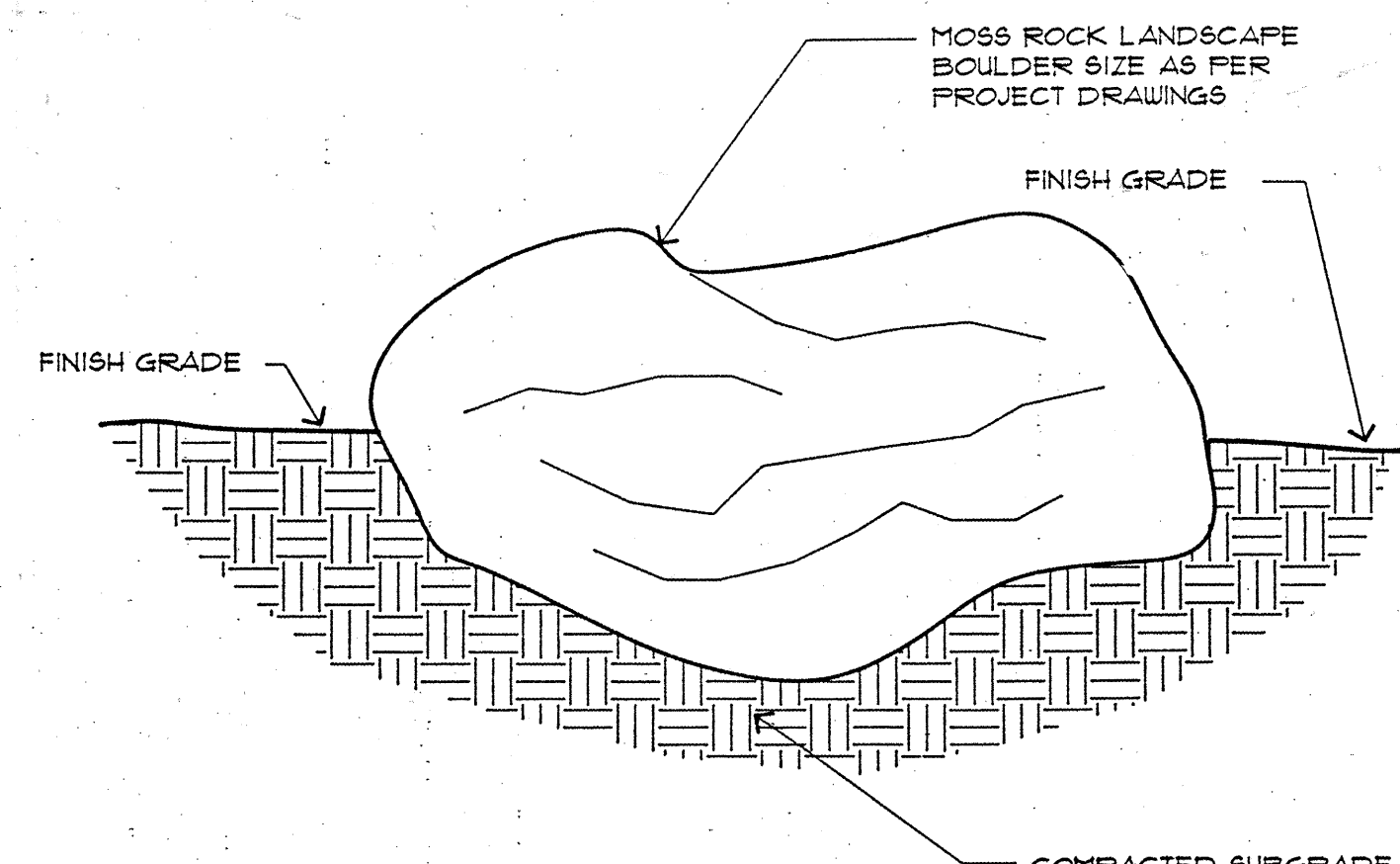
F WATER PROOFING DETAIL
L-5 1"



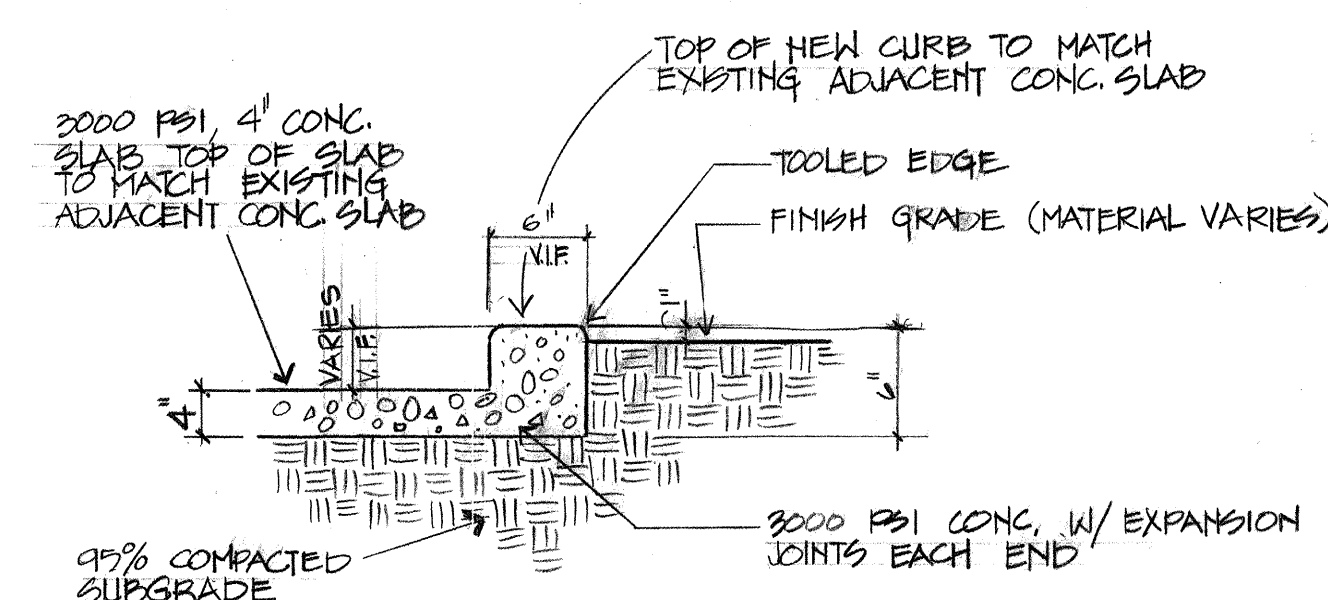
G BRICK PAVING DETAIL
L-5 1/2"



H BRICK PAVING DETAIL
L-5 1/2"



I LANDSCAPE BOULDER
L-5 MCD-0091 081693 N.T.S.



J BRICK EDGING DETAIL
L-5 1/2"

K TREE GRATE DETAIL
L-5 1/2"

M CONCRETE CURB
L-5 1"

AS BUILT INFORMATION	
CONTRACTOR	BACAS TREES
WORK STARTED BY	N/A
INSPECTOR'S ACCEPTANCE BY	ARL
FIELD VERIFICATION BY	BACAS TREES
DRAWINGS CORRECTED BY	BACAS TREES
MICRO-FILM INFORMATION	
RECORDED BY	
NO.	

DRAWN BY
EAC
CHECKED BY
ER
DATE
10/14/94

STATE OF NEW MEXICO
BAKER H. MORROW
NO. 2
REGISTERED
LANDSCAPE ARCHITECT

MORROW & COMPANY, LTD.
LANDSCAPE ARCHITECTS
210 La Veta N.E.
ALBUQUERQUE, N.M. 87108
505 268-2266 FAX 505 265-0637

CONSTRUCTION & PLANTING DETAILS

LANDSCAPE IMPROVEMENTS FOR THE
UNM SCHOOL OF ARCHITECTURE & PLANNING
2414 CENTRAL AVE SE
ALBUQUERQUE, NEW MEXICO

SHEET NO.
L-5
5 of 5