

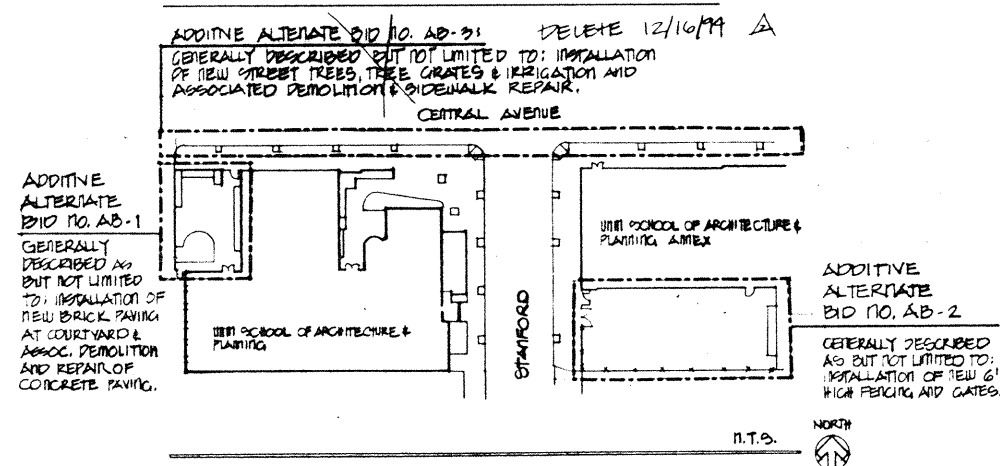
2 3 4 5 6 7 8 9 10 11 12 13 14 15
26-5091.90-2011

LANDSCAPE IMPROVEMENTS FOR THE UNIVERSITY OF NEW MEXICO SCHOOL OF ARCHITECTURE AND PLANNING

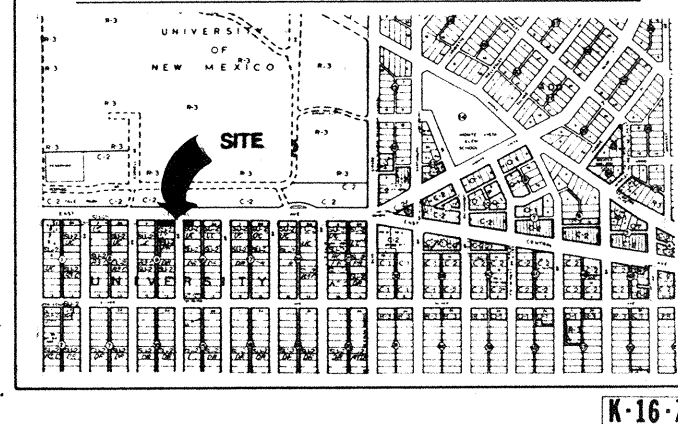
SCANNED BY
PLANNING

2414 CENTRAL AVE. S.E.
ALBUQUERQUE, NEW MEXICO

BIDDING PLAN



VICINITY MAP



INDEX OF DRAWINGS

- COVER SHEET
L-1 DEMOLITION & CONSTRUCTION PLAN & NOTES
L-2 IRRIGATION PLAN, LEGEND & NOTES
L-3 PLANTING PLAN, PLANT LIST & NOTES
L-4 IRRIGATION DETAILS
L-5 CONSTRUCTION & PLANTING DETAILS

For Information Only



Δ 12/16/99
DRC REVISIONS



MORROW & COMPANY
LANDSCAPE ARCHITECTS
210 La Veta Drive NE
Albuquerque, New Mexico 87108
505 268-2266

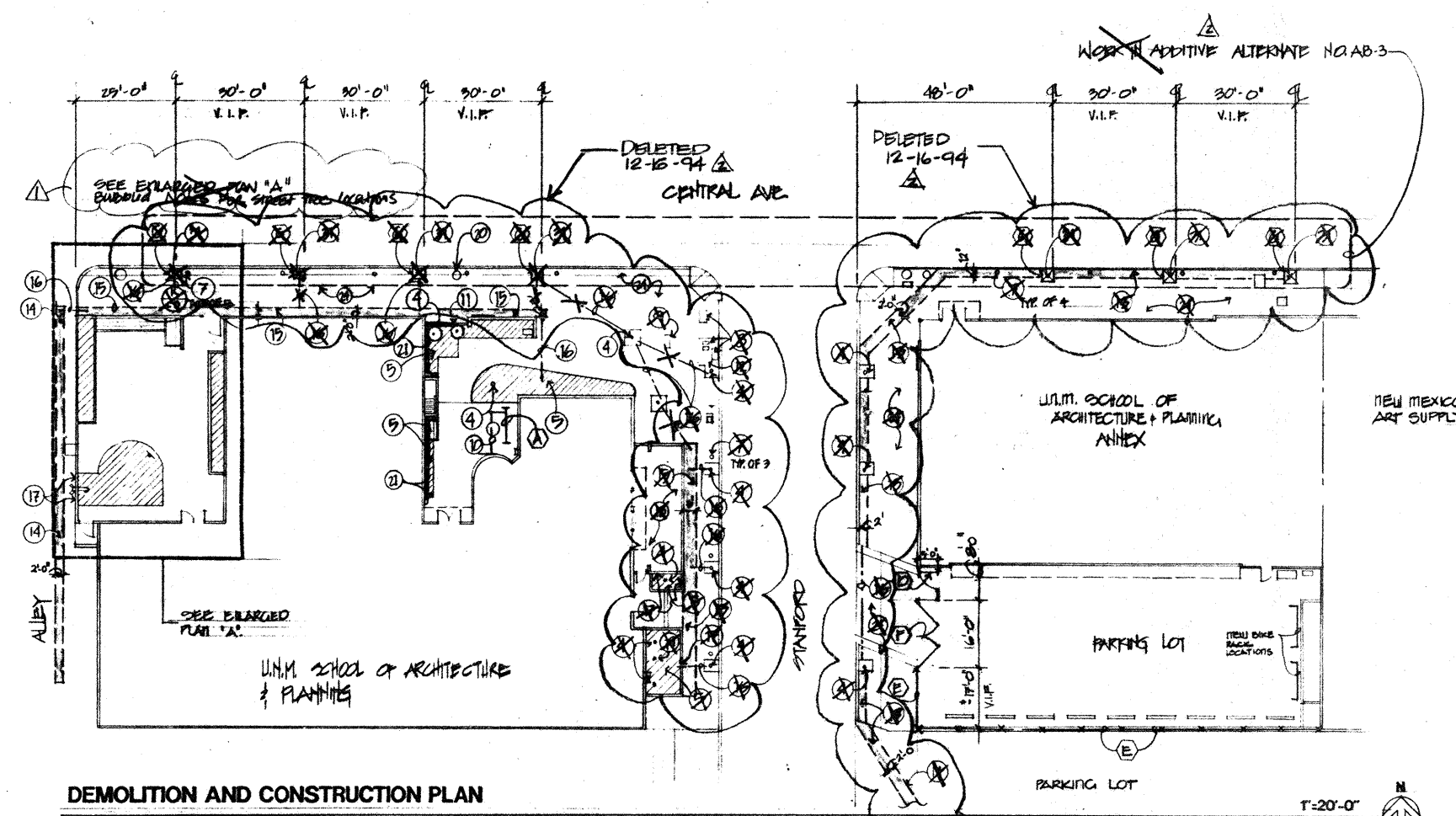
The **UNM**
University of New Mexico

UNM PROJECT NO. 7-10867

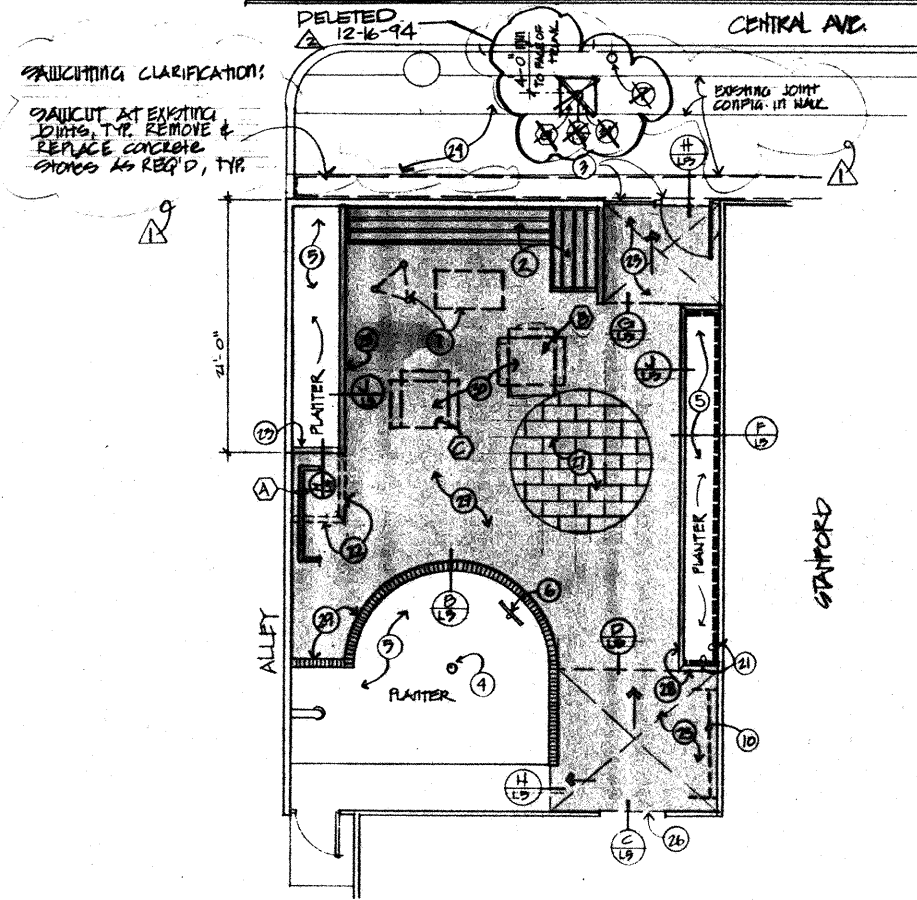
CITY OF ALBUQUERQUE PUBLIC WORKS DEPARTMENT ENGINEERING GROUP					
TITLE LANDSCAPE IMPROVEMENTS FOR THE UNIVERSITY OF NEW MEXICO SCHOOL OF ARCHITECTURE & PLANNING					
APPROVALS	ENGINEER	DATE	APPROVALS	ENGINEER	DATE
DRC CHAIRMAN	8/9/94	12/22/94	WATER	6/8/94	12/16/99
TRANSPORTATION	12/01/99	12/01/99	WASTE WATER		
HYDROLOGY	12/01/99	12/01/99			
PROJECT NO.	5091.90	MAP NO.	K-16	SHEET	1 OF 6

SCANNED BY
PLANNING

For Information Only



DEMOLITION AND CONSTRUCTION PLAN



ENLARGED PLAN "A"

1/8" = 1'-0"

KEYED NOTES

BASE BID WORK

- 1 REMOVE EXISTING SCULPTURES AND SITE AMENITIES, STOCKPILE AND RE-INSTALL PER OWNER'S DIRECTION IN NEW FENCED AREA SOUTH OF ANNEX.
- 2 SAND AND REFINISH EXISTING WOOD BENCHES WITH 2 COATS OF CLEAR SEALER.
- 3 EXISTING METAL FENCE AND GATE TO REMAIN. PROTECT FROM DAMAGE DURING DEMOLITION AND CONSTRUCTION.
- 4 PROTECT EXISTING TREES OR SHRUB TO REMAIN DURING DEMOLITION, CONSTRUCTION AND PLANTING.
- 5 REMOVE ALL EXISTING PLANTINGS EXCEPT ITEMS NOTED OTHERWISE. PREPARE AREA TO RECEIVE NEW PLANTINGS AS SHOWN IN PLANTING PLAN.
- 6 PROTECT EXISTING SIGN TO REMAIN DURING DEMOLITION, CONSTRUCTION AND PLANTING.
- 7 EXISTING PARKING METER TO REMAIN. PROTECT FROM DAMAGE DURING DEMOLITION, CONSTRUCTION AND PLANTING. ANY DAMAGE SHALL BE REPAIRED AT CONTRACTOR'S EXPENSE.
- 8 EXISTING TRAFFIC SIGNAL EQUIPMENT TO REMAIN. PROTECT FROM DAMAGE DURING DEMOLITION, CONSTRUCTION AND PLANTING. ANY DAMAGE SHALL BE REPAIRED AT CONTRACTOR'S EXPENSE.
- 9 EXISTING PUBLIC PAY TELEPHONES TO REMAIN. PROTECT FROM DAMAGE DURING DEMOLITION, CONSTRUCTION AND PLANTING. ANY DAMAGE SHALL BE REPAIRED AT CONTRACTOR'S EXPENSE.
- 10 REMOVE EXISTING BIKE RACKS AND RE-INSTALL IN CONCRETE FOOTINGS SOUTH OF ANNEX BUILDING IN NEW FENCED AREA.
- 11 TRANSPLANT EXISTING JAPANESE BLACK PINE TO MAIN CAMPUS AS DIRECTED BY UMM DEPARTMENT OF FACILITY PLANNING.
- 12 ADD 4" DEPTH OF SHREDDED BARK IN SIGNAL PIT.
- 13 SAWCUT AND REMOVE EXISTING CONCRETE WALK, WIDTH AS SHOWN. PREPARE TO INSTALL NEW IRRIGATION LINES AND SLEEVES, SEE IRRIGATION DRAWINGS. REPAIR WALK WITH NEW CONCRETE, INSTALL FLUSH WITH EXISTING SURROUNDING SURFACES TO REMAIN. CONTRACTOR SHALL VERIFY ALL UTILITIES PRIOR TO SAW CUTTING, REMOVAL OF CONCRETE AND TRENCHING FOR IRRIGATION.
- 14 SAWCUT AND REMOVE EXISTING ASPHALT PAVING IN ALLEY, WIDTH AS SHOWN. PREPARE TO INSTALL NEW IRRIGATION LINES AND SLEEVES, SEE IRRIGATION DRAWINGS. REPAIR AREA WITH NEW ASPHALT TO MATCH EXISTING, INSTALL FLUSH WITH EXISTING SURROUNDING SURFACES TO REMAIN. CONTRACTOR SHALL VERIFY ALL UTILITIES PRIOR TO SAWCUTTING, REMOVAL OF ASPHALT AND TRENCHING FOR IRRIGATION.
- 15 REMOVE EXISTING CONCRETE SIDEWALK STONES, WIDTH AS SHOWN. PREPARE TO INSTALL NEW IRRIGATION LINES AND SLEEVES, SEE IRRIGATION DRAWINGS. REPAIR AREA WITH NEW CONCRETE, INSTALL FLUSH WITH SURROUNDING SURFACES TO REMAIN. INSTALL WITH BROOM FINISH AND TROWELLED EDGE TO MATCH EXISTING ADJACENT CONCRETE SIDEWALK. CONTRACTOR SHALL VERIFY ALL UTILITIES PRIOR TO REMOVAL OF CONCRETE AND TRENCHING FOR IRRIGATION.
- 16 PNEUMATIC BORE UNDER EXISTING CONCRETE SIDEWALKS AND DRIVES TO INSTALL IRRIGATION SLEEVES AND LINES IN THIS AREA, SEE IRRIGATION DRAWINGS. CONTRACTOR SHALL VERIFY ALL UTILITIES PRIOR TO CONSTRUCTION. WHERE PNEUMATIC BORING IS NOT POSSIBLE, CONTRACTOR SHALL REMOVE CONCRETE STONES AS REQ'D TO INSTALL NEW IRRIGATION LINES AND SLEEVES, SEE IRRIGATION DRAWINGS. CONTRACTOR SHALL REPAIR SURFACES TO MATCH EXISTING ADJACENT SURFACES.

GENERAL NOTES

1. CONTRACTOR SHALL VERIFY LOCATION OF ALL EXISTING UTILITIES PRIOR TO DEMOLITION AND CONSTRUCTION. ANY DAMAGE TO UTILITIES SHALL BE REPAIRED AT CONTRACTOR'S EXPENSE AND AT NO ADDITIONAL EXPENSE TO THE OWNER.
2. CONTRACTOR SHALL REPAIR OR REPLACE ANY ITEMS TO REMAIN WHICH ARE DAMAGED DUE TO CONSTRUCTION OPERATIONS AT NO ADDITIONAL EXPENSE TO THE OWNER.

EQUIPMENT NOTES

BASE BID

- A UMM STANDARD BIKE RACK MODEL #MP-4113 SECURITY BIKE RACK AS MANUFACTURED BY ARIZONA CORRECTIONAL INDUSTRIES, 1918 W. VAN BUREN, PHOENIX, AZ 85005, ATTENTION: NANCY ALLAIRE, (602) 255-1464. COLOR: BLACK POWDERCOAT FINISH.

ADDITIVE ALTERNATE NO. AB-1

- B INSTALL (1) OWNER PROVIDED SINGLE PEDESTAL SQUARE TABLE IN CONCRETE FOOTING PER MANUFACTURER'S RECOMMENDATION.
- C INSTALL (1) OWNER PROVIDED SINGLE PEDESTAL SQUARE TABLE IN CONCRETE FOOTING PER MANUFACTURER'S RECOMMENDATION.

ADDITIVE ALTERNATE NO. AB-2

- D 4" WIDE x 8" HIGH SWINGING GATE STYLE MATERIAL AND COLOR TO MATCH FENCING. INSTALL IN CONCRETE FOOTINGS PER MANUFACTURER'S RECOMMENDATIONS. PROVIDE COMPLETE WITH PANG BAR AT INTERIOR SIDE AND CYLINDER LOCK AND PULL AT OUTSIDE. KEY CYLINDER TO MATCH EXISTING CYLINDER AT ANNEX.
- E 6" HIGH POWDER COATED METAL FENCING AS MANUFACTURED BY OMEGA FENCE SYSTEMS INC. AND DISTRIBUTED BY NATIONAL WHOLESALE (1-800-367-5685) INSTALL ON EXISTING CONCRETE CURB AND IN NEW CONCRETE FOOTINGS PER MANUFACTURER'S RECOMMENDATION. COLOR: BLACK.
- F PROVIDE A PAIR OF 6' H x 6' WIDE SWINGING GATES FOR VEHICLE ACCESS. STYLE, MATERIAL AND COLOR TO MATCHING FENCING. INSTALL IN CONCRETE FOOTINGS PER MANUFACTURER'S RECOMMENDATIONS. PROVIDE COMPLETE WITH METAL TABS FOR PADLOCK AND ROD. DRILL HOLE FOR ROD INTO EXISTING CONCRETE.

ADDITIVE ALTERNATE NO. AB-3

- G MODEL B-TG729-1 36" x 36" SQUARE TREE GRATE AS MANUFACTURED BY BARRYCRAFT AND AS DISTRIBUTED BY H & H BUILDING PRODUCTS (505) 344-1747. INSTALL WITH FRAME IN CONCRETE SIDEWALK PER MANUFACTURER'S RECOMMENDATIONS.

- 17 BORE THROUGH EXISTING STUCCOED PLANTER WALL AS REQUIRED TO INSTALL NEW IRRIGATION LINES AND SLEEVES, SEE IRRIGATION DRAWINGS. PROTECT PLANTER AND STUCCO FINISH FROM DAMAGE DURING CONSTRUCTION. REPAIR ANY DAMAGE TO WALL AND STUCCO FINISH AT NO COST TO THE OWNER. SEAL BORED OPENING WITH WATERPROOF SEALANT.
- 18 REMOVE AND RE-INSTALL EXISTING WOOD DECKING AS REQUIRED TO INSTALL NEW WHISKEY BARRELL PLANTERS AND NEW DRIP IRRIGATION SYSTEM. REINFORCE EXISTING DECK STRUCTURE AS REQUIRED TO SUPPORT NEW WHISKEY BARRELL PLANTERS.
- 19 REMOVE EXISTING ALANTHUS TREE.
- 20 EXISTING OVERHEAD STREET LIGHT AND OVERHEAD POWER LINES TO REMAIN.
- 21 INSTALL WATERPROOFING MEMBRANE AT BUILDING WALL. WRAP AROUND SIDES OF PLANTER AS SHOWN IN PLAN. SEE DETAIL FLS.
- 22 SAWCUT AND REMOVE EXISTING CONCRETE CURB AS SHOWN. PREPARE AREA TO RECEIVE NEW CONCRETE SLAB. TOP OF SLAB SHALL BE FLUSH W/ ADJACENT SURROUNDING TOP OF SLAB.
- 23 INSTALL NEW CONCRETE CURBING AS SHOWN. TOP OF NEW CURB SHALL BE FLUSH WITH ADJACENT TOP OF CURB. SEE DETAIL MLS.
- 24 EXISTING CONCRETE WALKS TO REMAIN PROTECT FROM DAMAGE DURING DEMOLITION, CONSTRUCTION AND PLANTING. ANY DAMAGE SHALL BE REPAIRED AT CONTRACTOR'S EXPENSE.

ADDITIVE ALTERNATE NO. AB-1

- 25 SAWCUT AND REMOVE EXISTING CONCRETE. INSTALL NEW 4" CONCRETE SLAB AND BRICK PAVERS PER DETAIL DLS. SLOPE AS REQUIRED TO MATCH ADJACENT GRADES. SLOPE SHALL NOT EXCEED 1 IN 20. TOP OF NEW BRICKS SHALL BE FLUSH WITH TOP OF ADJACENT BRICK OR CONCRETE TO REMAIN. PROVIDE EXPANSION JOINT WHERE NEW CONCRETE MEETS EXISTING ADJACENT SURFACES.
- 26 REMOVE EXISTING DOOR THRESHOLD AND RE-INSTALL AFTER BRICK HAS BEEN INSTALLED.
- 27 LAY BRICK IN RUNNING BOND (AS SHOWN IN INSERT) IN ALL SHADED AREAS.
- 28 LAY SAILOR COURSE OF BRICKS ALONG TOP OF PLANTER CURBING. MITER ALL CORNERS. SEE DETAIL JLS.
- 29 LAY SAILOR COURSE OF BRICKS ALONG EDGE OF PLANTER BED AS SHOWN, SEE DETAIL BLS.
- 30 REMOVE AND RELOCATE EXISTING PICNIC TABLES TO SOUTH OF ANNEX BUILDING IN NEW FENCED AREA. INSTALL NEW PICNIC TABLES IN CONCRETE FOOTINGS. NEW PICNIC TABLES TO BE SUPPLIED BY OWNER.

ADDITIVE ALTERNATE NO. AB-3

- 31 SAWCUT AND REMOVE CONCRETE. PREPARE AREA TO RECEIVE NEW TREE GRATE. INSTALL TREE GRATE PER MANUFACTURER'S DIRECTION.

12/16/94
DRC REVISIONS

REVISIONS
PER D.R.C. REVIEW
COMMENTS 1/29/94

DRAWN BY
EAC

CHECKED BY
ER

DATE
10/14/94

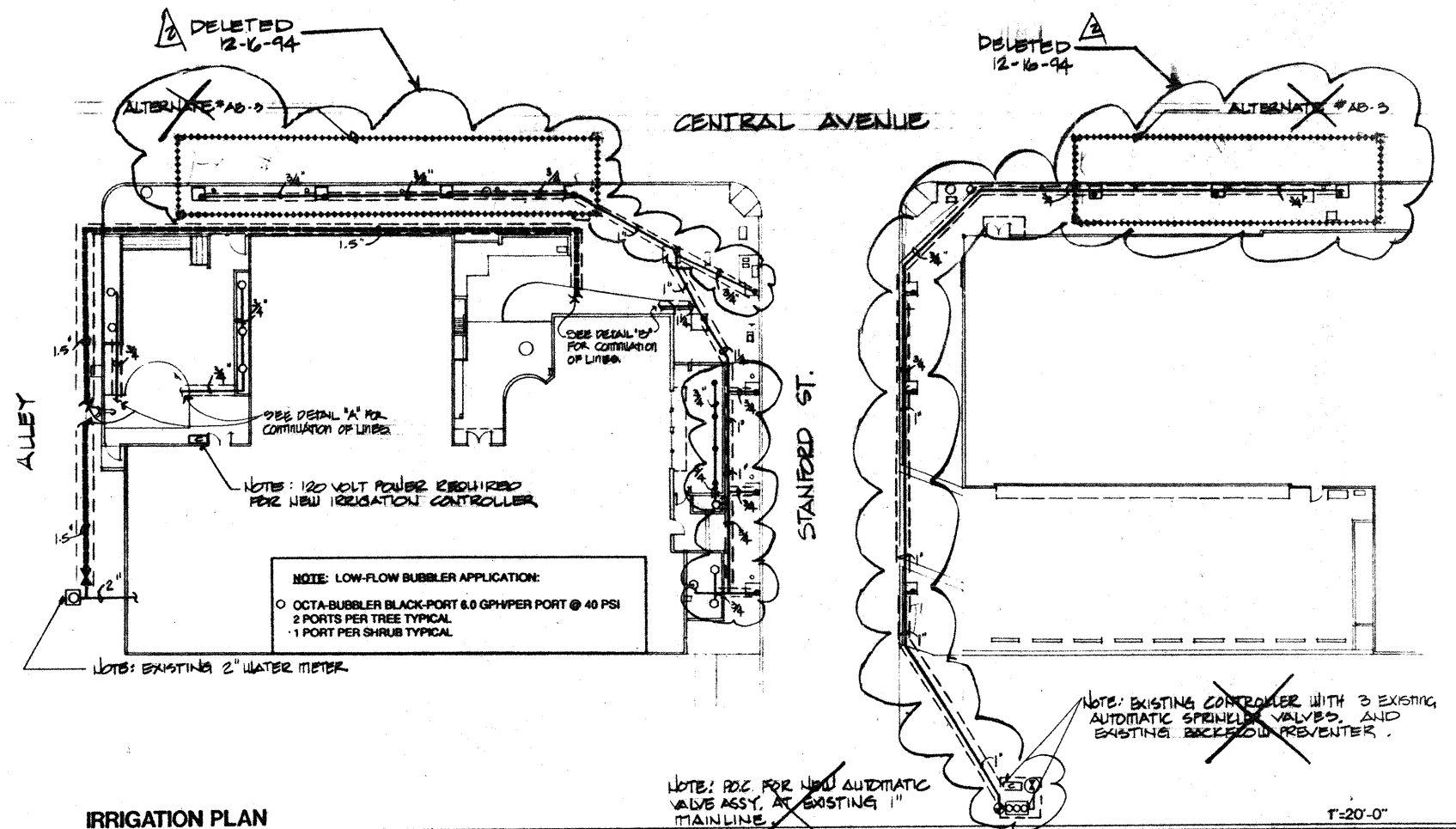
STATE OF NEW MEXICO
BAKER & BROWN
REGISTERED
LANDSCAPE ARCHITECTS

MORROW & COMPANY, LTD.
LANDSCAPE ARCHITECTS
210 La Veta N.E.
Albuquerque, N.M. 87108
505 268-2266

LANDSCAPE IMPROVEMENTS FOR THE
UNM SCHOOL OF ARCHITECTURE & PLANNING
2414 CENTRAL AVE SE
ALBUQUERQUE, NEW MEXICO

DEMOLITION & CONSTRUCTION PLAN
NOTES

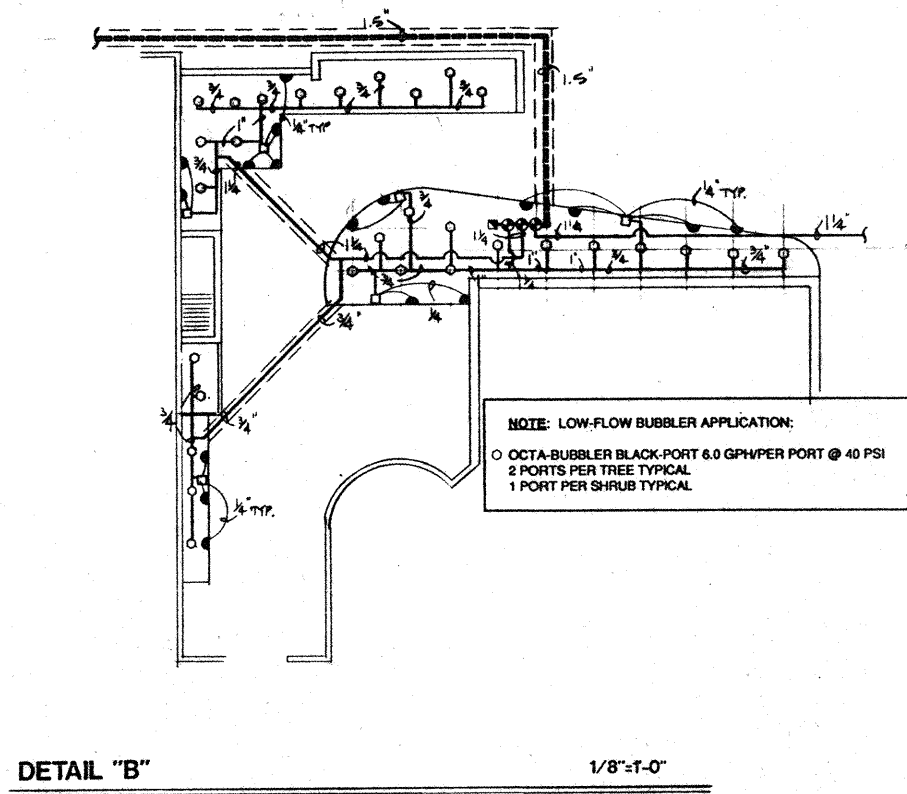
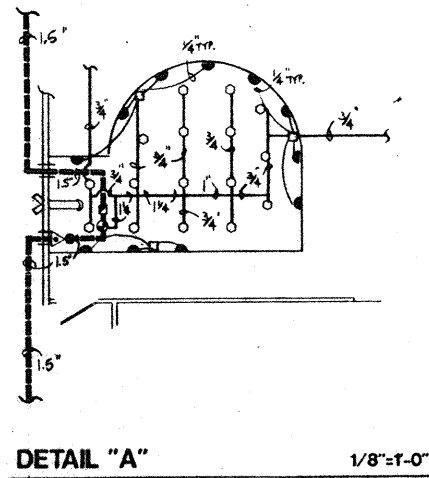
SHEET NO.
L-1
1 of 5



IRRIGATION LEGEND	
PEPCO QB-2 BLUE PORT BUBBLER ASSEMBLY 2.0 GPH/PER PORT @ 40 PSI (2) PORTS PER TREE TYPICAL	SEE DETAIL
PEPCO QB-2 GREEN PORT BUBBLER ASSEMBLY 20.0 GPH/PER PORT @ 40 PSI	SEE DETAIL
PEPCO MICRO-POP-UP SPRAY DEVICE #MMP-50 ASSEMBLY 90° MICRO SPRAY NOZZLE ADJUSTABLE RADIUS 180° MICRO SPRAY NOZZLE ADJUSTABLE RADIUS NOTE: CONNECT MICRO-SPRAY TO GREEN PORT BUBBLER ONLY	SEE DETAIL
PEPCO OCTA-BUBBLER BLACK-PORT (8 OUTLET PORTS) ASSEMBLY OCTA-BUBBLER BLACK-PORT 6.0 GPH/PER PORT @ 40 PSI	SEE DETAIL
RAINBIRD 100-PEB 1" AUTOMATIC VALVE ASSEMBLY	SEE DETAIL
RAINBIRD RCM-6 SERIES CONTROLLER ASSEMBLY	SEE DETAIL
FERRIS 825-Y-1.5" REDUCED PRESSURE BACKFLOW PREVENTER RAINBIRD 150-PEB 1.5" MASTER VALVE ASSEMBLY HOTBOX #1 BACKFLOW ENCLOSURE	SEE DETAIL
RAINBIRD 33 DNP W/3K AND SH-0 HOSE ADAPTER	SEE DETAIL
1.5" SCH. 40 PVC MAINLINE BURY 28" SCH. 40 PVC LATERALS BURY 18"	
CL 200 PVC SLEEVE PIPE 2 SIZES LARGER THAN PIPE BEING SLEEVED CL 200 PVC SLEEVE 1-1/4" WIRE SLEEVE TYPICAL	

- IRRIGATION NOTES**
- ALL VALVE BOXES FOR AUTOMATIC VALVES SHALL BE INSTALLED AT A MINIMUM OF 12" FROM EDGES OF TURF.
 - ALL VALVE BOXES SHALL BE SUPPORTED BY CINDER BLOCKS, (MINIMUM 2 PER VALVE BOX). INSTALL BLOCKS IN A MANNER WHICH WILL PREVENT CONTACT WITH PIPING, WIRES, VALVES, ETC.
 - MARK ALL 24-VOLT WIRE ENDS WITH 3M STD-89 WIRE MARKER TAPE AT THE VALVE BOX AND CONTROLLER LOCATIONS.
 - ALL 24-VOLT WIRE SHALL BE MARKED WITH A 4" WIDE YELLOW MARKER TAPE AND MARKED "WARNING-ELECTRICAL". LAY MARKER TAPE HORIZONTALLY 6" ABOVE WIRE.
 - 24-VOLT WIRE SHALL BE IN COMMON TRENCH WITH MAINLINE AND SHALL HAVE SEPARATE SLEEVE WHERE CROSSING ALL HARD CONSTRUCTION. ALL SLEEVE PIPING FOR 24-VOLT WIRE SHALL BE 1-1/4" CLASS 200 PVC.
 - WHERE PROPOSED PIPING CROSSES EXISTING ASPHALT AND/OR CONCRETE, THE CONTRACTOR SHALL SAW-CUT, REMOVE AND PROPERLY DISPOSE OF WASTE, EXCAVATE, INSTALL SLEEVE PIPING, MAINS AND LATERALS, BACKFILL AND COMPACT TO 95%. CONTRACTOR SHALL REPLACE ASPHALT AND/OR CONCRETE TO MATCH EXISTING.
 - THE CONTRACTOR SHALL ADJUST ALL VALVES, LOW-FLOW BUBBLERS, AND MICRO-SPRINKLERS FOR OPTIMUM COVERAGE, AND SHALL PROVIDE AND INSTALL NOZZLES OTHER THAN THOSE SPECIFIED AS INSTRUCTED BY THE LANDSCAPE ARCHITECT AT NO ADDITIONAL COST TO THE OWNER.
 - CONTRACTOR SHALL INSTALL ALL LOW-FLOW BUBBLERS ON HIGH SIDE OF TREE WELLS.
 - CONTRACTOR SHALL TAPE CLOSED ALL SLEEVE PIPE OPENINGS USING DUCT TAPE TO PREVENT DEBRIS FROM ENTERING SLEEVES.
 - THE CONTRACTOR SHALL EXTEND 120-VOLT A.C. FROM EXISTING POWER TO PROPOSED CONTROLLER AND BACKFLOW PREVENTER LOCATIONS. ALL ELECTRICAL WORK SHALL BE PER LOCAL CODES AND N.E.C. STANDARDS.
 - ALL EXISTING DISTRIBUTION LINE LOCATIONS ARE SCHEMATIC. IT SHALL BE THE CONTRACTOR'S RESPONSIBILITY TO POT HOLE AND FIELD CHECK TO DETERMINE ACTUAL LOCATIONS AS AN INCIDENTAL REQUISITE TO THE CONSTRUCTION CONTRACT.
 - THE PROPOSED CONTROLLER LOCATION INDICATED ON THE PLANS IS APPROXIMATE. ACTUAL LOCATION OF THE CONTROLLER SHALL BE DETERMINED BY OWNER'S REPRESENTATIVE IN THE FIELD.
 - LOCATIONS OF ALL SLEEVE PIPING SHALL BE VERIFIED BY THE CONTRACTOR. EXCAVATION, POT-HOLING, ASSOCIATED WORK, MATERIALS, LABOR, ETC. SHALL BE THE RESPONSIBILITY OF THE CONTRACTOR. NO ADDITIONAL PAYMENT WILL BE MADE TO THE CONTRACTOR FOR LOCATING SLEEVES.
 - THIS SYSTEM WAS DESIGNED FOR 55 PSI STATIC WATER PRESSURE AND 25 GPM. SHOULD THE PRESSURE AND GALLONAGE BE LESS THAN THIS, NOTIFY THE LANDSCAPE ARCHITECT BEFORE PROCEEDING WITH THE INSTALLATION SO THAT ADJUSTMENTS CAN BE MADE IN THE PIPE SIZE. IF THE PRESSURE IS MUCH GREATER, NOTIFY THE LANDSCAPE ARCHITECT, AS A PRESSURE REDUCER MAY BE REQUIRED.

NOTE: LOW-FLOW BUBBLER APPLICATION:
○ OCTA-BUBBLER BLACK-PORT 6.0 GPH/PER PORT @ 40 PSI
2 PORTS PER TREE TYPICAL
1 PORT PER SHRUB TYPICAL



For Information Only

12/16/94
DRC
REVISIONS

DRAWN BY
KLE
CHECKED BY
ECK
DATE
10/14/94

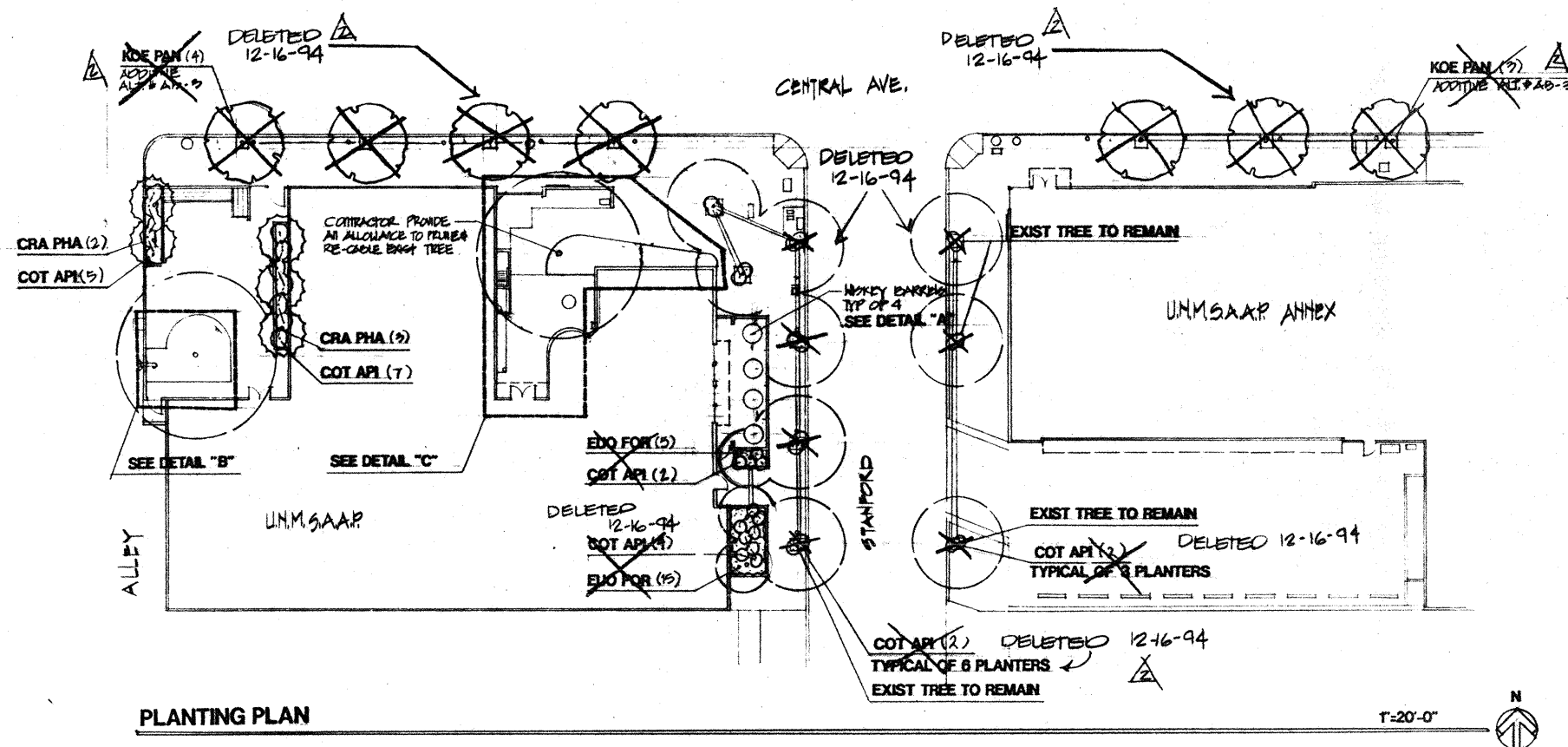
STATE OF NEW MEXICO
COUNTY OF BERNILLO
LANDSCAPE ARCHITECT

MORROW & COMPANY, LTD.
LANDSCAPE ARCHITECTS
210 La Veta N.E.
Albuquerque, N.M. 87106
505 266-2266

LANDSCAPE IMPROVEMENTS FOR THE
UNM SCHOOL OF ARCHITECTURE & PLANNING
2414 CENTRAL AVE SE
ALBUQUERQUE, NEW MEXICO

SHEET NO.
L-2
2 of 5

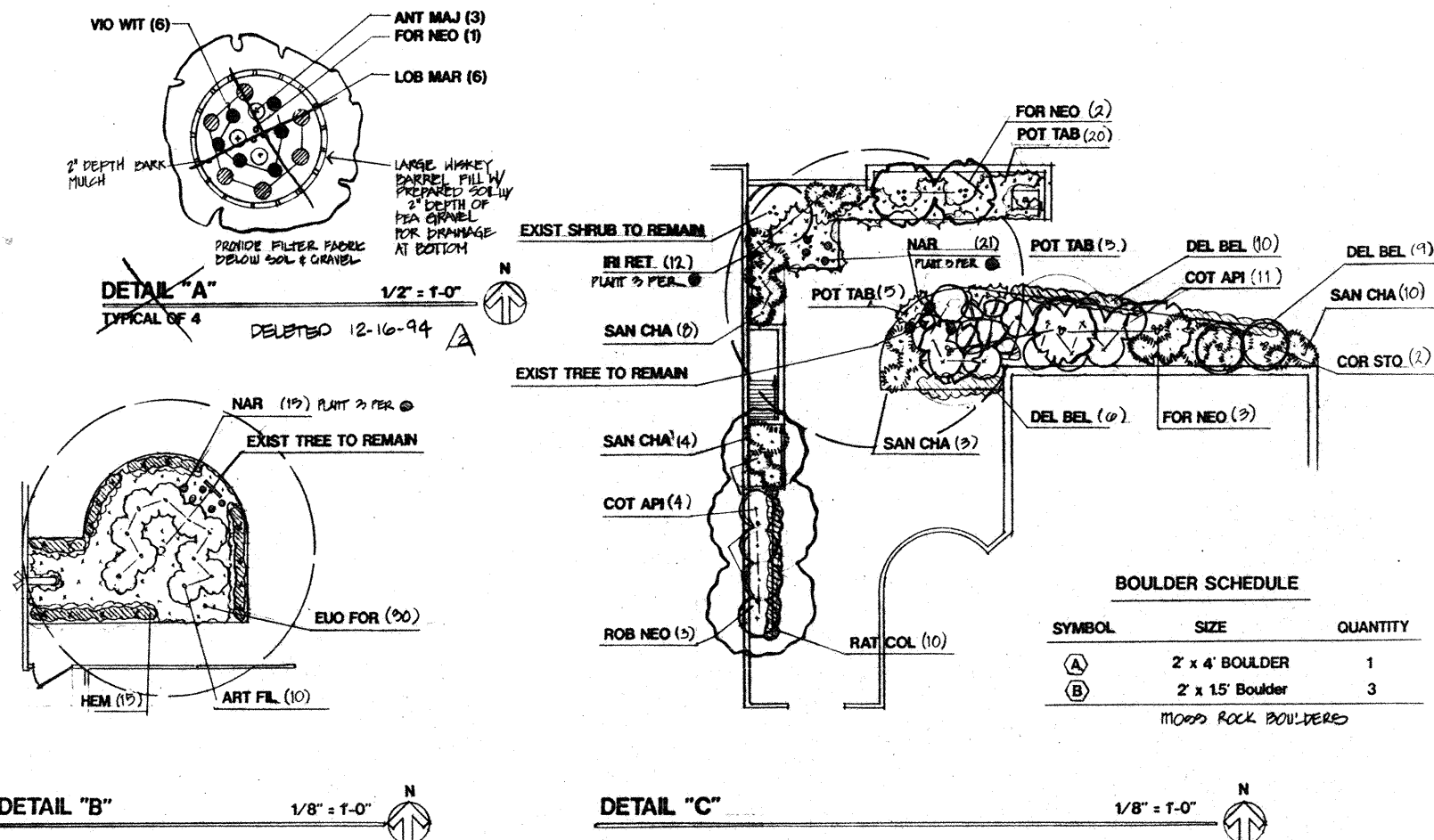
SCANNED BY
PLANNING



PLANTING NOTES


1. IN CASE OF A DISCREPANCY IN PLANT QUANTITIES SHOWN ON THE PLANT LIST AND THOSE SHOWN ON THE PLANTING PLANS, THE QUANTITIES SHOWN THE PLANS SHALL GOVERN.
2. QUANTITIES SHOWN ON THE PLANT LIST ARE ESTIMATES ONLY. CONTRACTOR SHALL VERIFY ALL QUANTITIES PRIOR TO BID AND INSTALLATION. NO ADDITIONAL PAYMENT WILL BE MADE FOR ANY DISCREPANCIES IN QUANTITIES BETWEEN THE PLANTING PLAN AND THE PLANT LIST.
3. SEE SHEET L- 6 FOR PLANTING DETAILS.
4. A 3" DEPTH OF BARK MULCH SHALL BE INSTALLED THROUGHOUT ALL SHRUB BEDS WITH FILTER FABRIC BELOW. FILTER FABRIC SHALL BE MIN. 4 OZ. PER SQ WOVEN POLYPROPYLENE FIBER, BLACK (DEWITT WEED BARRIER OR EQUAL) OVERLAY EDGES 6". TURN DOWN PERIMETER EDGES 6".
5. THE CONTRACTOR SHALL PRUNE LOWER BRANCHES OF DECIDUOUS TREES TO 6 FEET ABOVE FINISH GRADE.
6. IF THERE IS A DISCREPANCY IN FIELD OR NURSERY TREES BETWEEN THE CONTAINER SIZE CALLED OUT UNDER "REMARKS" AND THE CALIPER AND HEIGHT CALLED OUT UNDER "SIZE", THE SPECIFIED TREE MUST MEET THE CALIPER AND HEIGHT REQUIREMENTS SPECIFIED UNDER "SIZE", EVEN IF A LARGER CONTAINER SIZE IS REQUIRED TO MEET THESE SPECIFICATIONS, AT NO ADDITIONAL COST TO THE OWNER.
7. CONTRACTOR SHALL DISTRIBUTE PLANTS EVENLY THROUGHOUT SHRUB BEDS.
8. CONTRACTOR SHALL AMEND SOIL TO A DEPTH OF 6"-8" IN A MINIMUM 10" DIAMETER AROUND EXISTING TREES WITH BACKFILL MIXTURE.
9. CONTRACTOR SHALL PROTECT EXISTING PLANTS TO REMAIN AND SHALL REPLACE PLANTS DAMAGED BY CONSTRUCTION OPERATIONS WITH PLANTS OF LIKE SPECIES AND SIZE.

For Information Only



PLANT LIST

SYMBOL	BOTANICAL NAME	COMMON NAME	QUANTITY	INSTALLED	SIZE	MATURE	REMARKS
TREES							
CRA PHA	Crataegus phaenopyrum	Washington Hawthorn	6	8'-10' ht., 1-3/4" cal.	20' ht. and spd.	25 gallon	
KOE PAN	Koeleruteria paniculata	Goldenrain Tree	7	10'-12' ht., 2" cal.	25' ht., 20' spd.	24" box	(Add. Alt. A2) - 2
SHRUBS							
ART FIL	Artemisia filifolia	Sand Sage	10	12" ht., 12" spd.	4' ht. and spd.	1 gallon	
COR STO	Cornus stolonifera	Red Osier Dogwood	2	12" ht., 6" spd.	5' ht. and spd.	1 gallon	
FOR NEO	Forestiera neomexicana	New Mexico Olive	9	24" ht., 24" spd.	13' ht., 10' spd.	5 gallon	(Prune up to tree form)
ROB NEO	Robinia neomexicana	New Mexico Locust	3	24" ht. and spd.	13' ht., 10' spd.	5 gallon	(Prune up to tree form)
GROUND COVER							
COT APT	Cotoneaster aciculatus	Cranberry Cotoneaster	51	8" ht. and spd.	24" ht., 4" spd.	1 gallon	
EUO FOR	Euonymus fortunei	Creeeping Euonymus	50	2" ht.	12" ht., 36" spd.	4" pot	
POT TAB	Potentilla tabernaemontani	Spring Cinquefoil	30	1" ht.	4" ht., 12" spd.	4" pot	
SAN CHA	Santolina chamaecyparissus	Grey Santolina	25	8" ht. and spd.	24" ht. and spd.	4" pot	
FLOWERS - PERENNIALS							
DEL BEL	Delphinium belladonna	Delphinium	16	3" ht.	18" ht.	4 pack	
RAT COL	Ratibida columnifera 'Mexican Hat'	Coneflower	10	3" ht.	24" ht.	4 pack	
BULBS AND TUBE							
HEM	Hemerocallis	Daylily	15	Min. 8" ht.	18" ht.		Tubers
IRI RET	Iris reticulata	Iris	12	—	18" ht.		Bulbs, Purple color flower
NAR	Narcissus 'King Alfred'	Daffodil	36	—	18" ht.		Bulbs
FLOWERS - ANNUALS							
ANT MAJ	Antirrhinum majus	Snapdragon	12	3" ht.	12" ht.	8 pack	
LOB MAR	Lobularia maritima 'Carpot of Snow'	Alyssum	24	1" ht.	4" ht.	8 pack	
VIO WIT	Viola witrockiana	Pansy	24	3" ht.	6" ht.	6 pack	

 12/16/94
DRC
REVISIONS

5091.90
CPN-5001.90

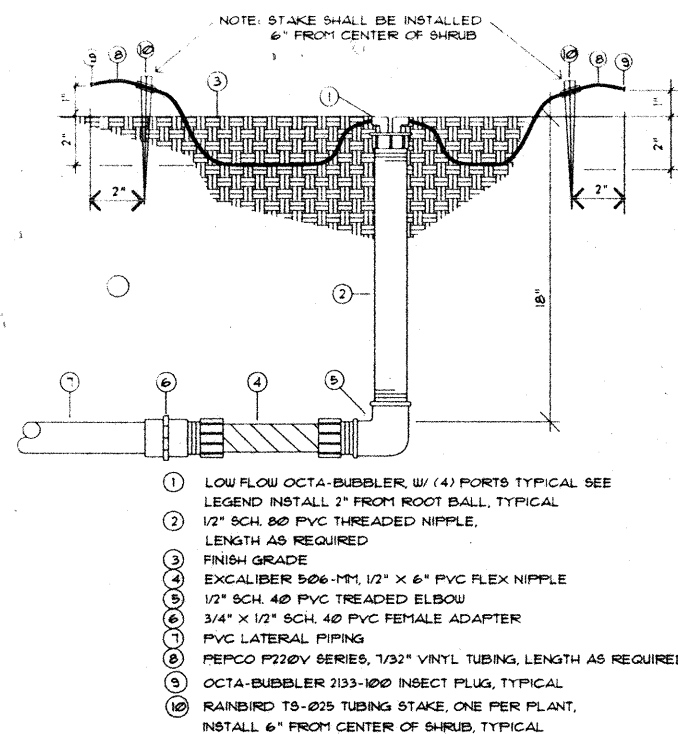
MORROW & COMPANY, LTD.
LANDSCAPE ARCHITECTS
210 La Veta N.E.
Albuquerque, N.M. 87108
505 268-2266 FAX 505 265-9637

PLANTING PLAN,
PLANT LIST & NOTES

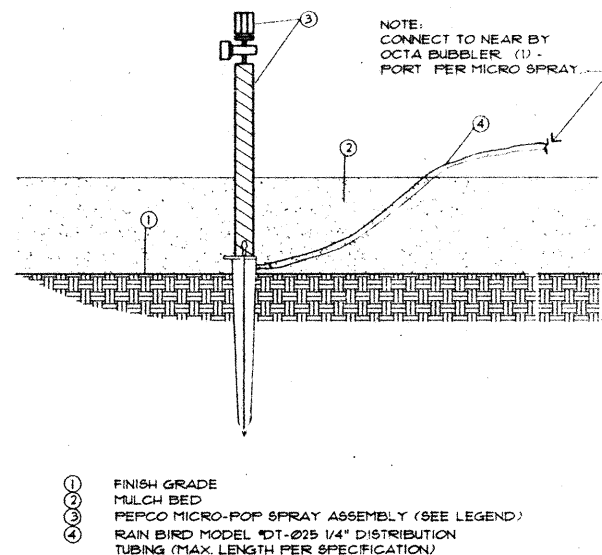
LANDSCAPE IMPROVEMENTS FOR THE
UNM SCHOOL OF ARCHITECTURE & PLANNING
2414 CENTRAL AVE SE
ALBUQUERQUE, NEW MEXICO

SHEET NO.

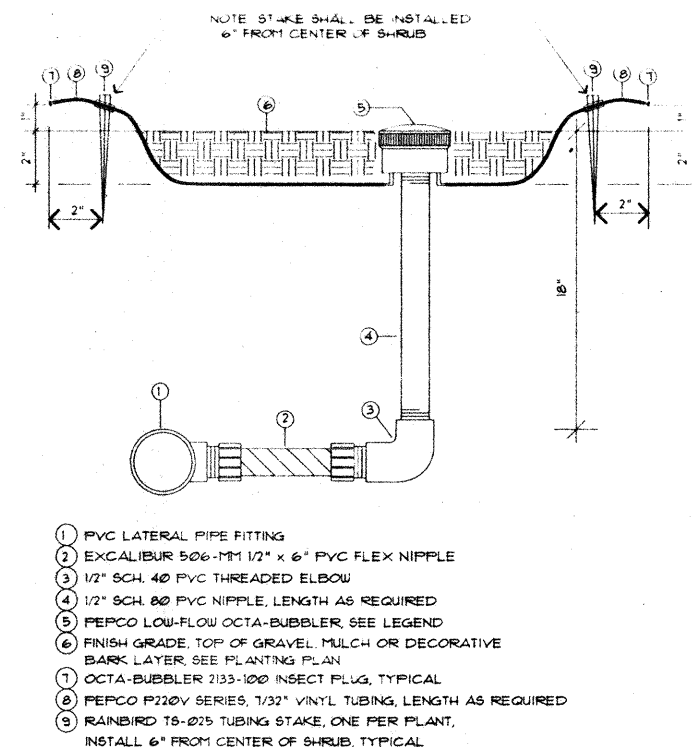
L-3
3 of 5



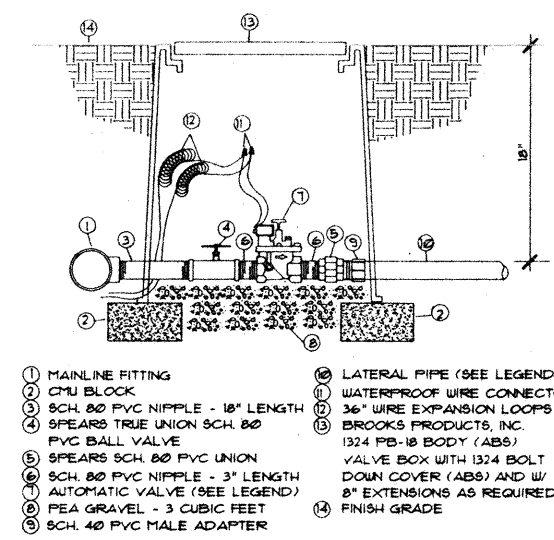
A LOW FLOW BUBBLER ASSEMBLY (4 PORTS)
L-4 MCD-0151 09/2014 N.T.S.



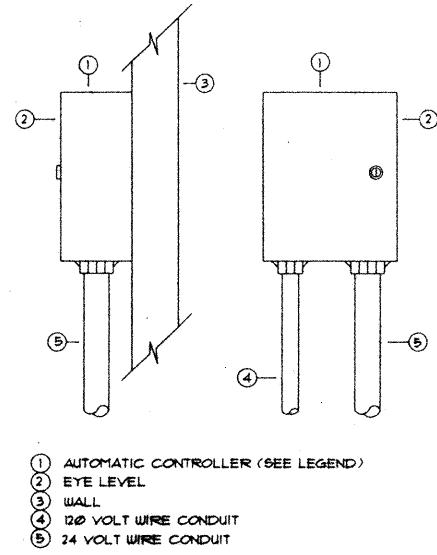
B DRIF MICRO -SPRAY SPRINKLER
L-4 MCD-0152 09/2014 N.T.S.



C LOW FLOW BUBBLER ASSEMBLY (8 PORTS)
L-4 MCD-0150 09/2014 N.T.S.

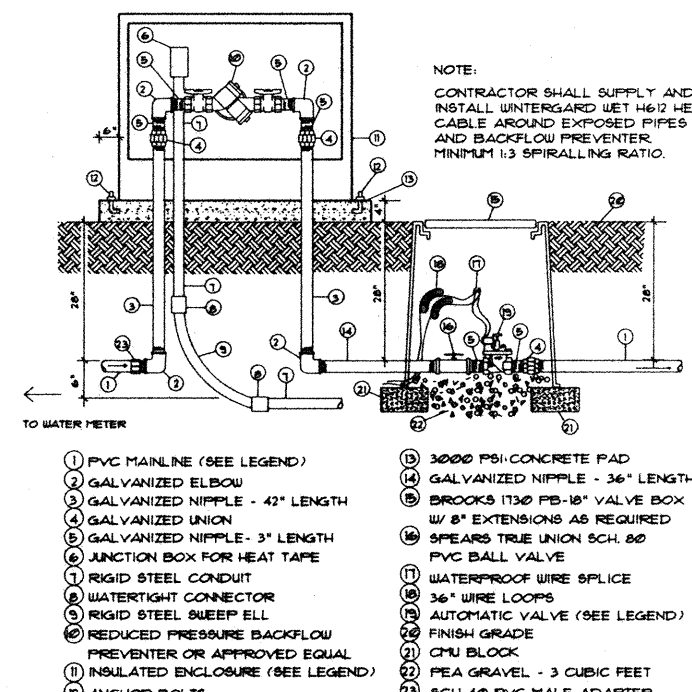


D AUTOMATIC VALVE ASSEMBLY
L-4 MCD-0013 06/13/94 N.T.S.

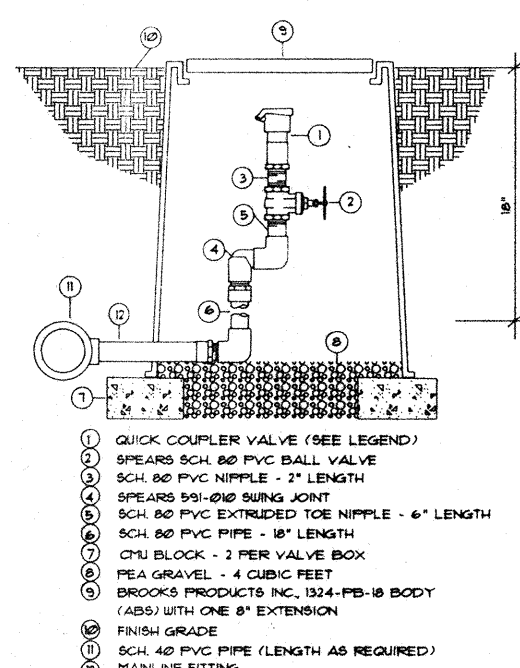


NOTES:
CONTROLLER SHALL BE MOUNTED SECURELY TO WALL USING APPROPRIATE FASTENERS FOR WALL TYPE.
ALL EXPOSED CONDUIT SHALL BE EMT, OR EQUAL AND APPROVED BY LOCAL CODES.
ALL CONDUIT CONNECTIONS SHALL BE MADE USING WATERTIGHT CONNECTORS.

E WALL MOUNT AUTOMATIC CONTROLLER
L-4 MCD-0016 07/09/93 N.T.S.



F R.P. BACKFLOW PREVENTER & MASTER VALVE ASSEMBLY
L-4 MCD-0045 07/09/93 N.T.S.



G QUICK COUPLER ASSEMBLY
L-4 MCD-0079 08/07/94 N.T.S.

DRAWN BY
KLE
CHECKED BY
ECR
DATE
10/14/94

STATE OF NEW MEXICO
BAKER H. MORROW
LANDSCAPE ARCHITECT
REGISTERED
NO. 2

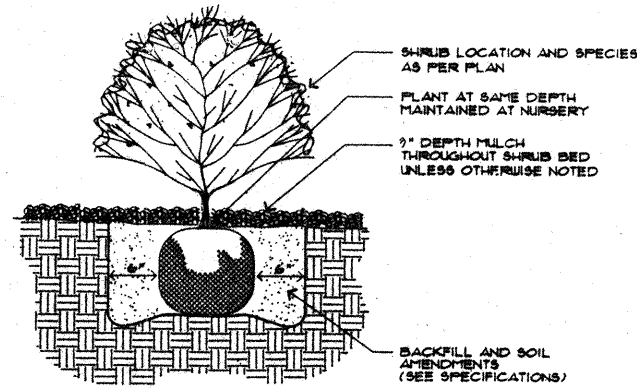
MORROW & COMPANY, LTD.
LANDSCAPE ARCHITECTS
210 La Veta N.E.
Albuquerque, N.M. 87108
505 266-2206 FAX 505 285-9837

IRRIGATION DETAILS

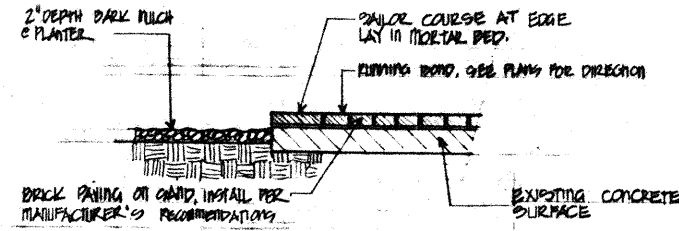
LANDSCAPE IMPROVEMENTS FOR THE
UNM SCHOOL OF ARCHITECTURE & PLANNING
2414 CENTRAL AVE SE
ALBUQUERQUE, NEW MEXICO

SHEET NO.
L-4
4 of 6

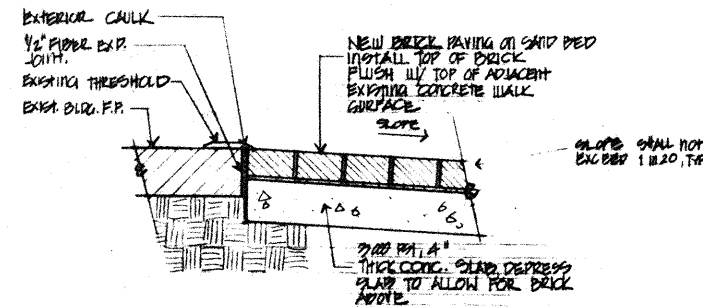
For Information Only



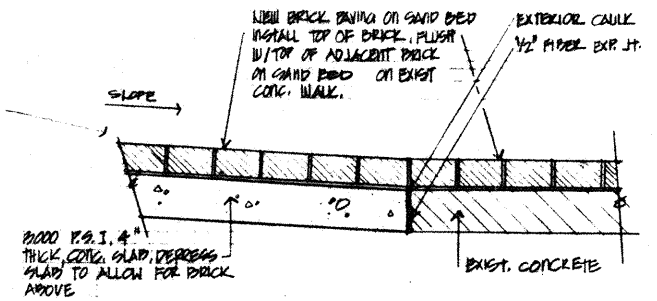
A SHRUB PLANTING DETAIL
L-5 MCD-0004 010093 N.T.S.



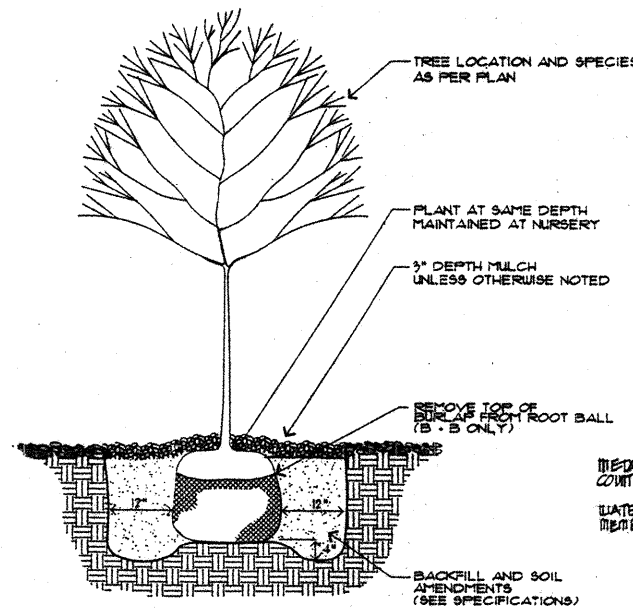
B BRICK PAVING EDGE DETAIL
L-5 3/4"



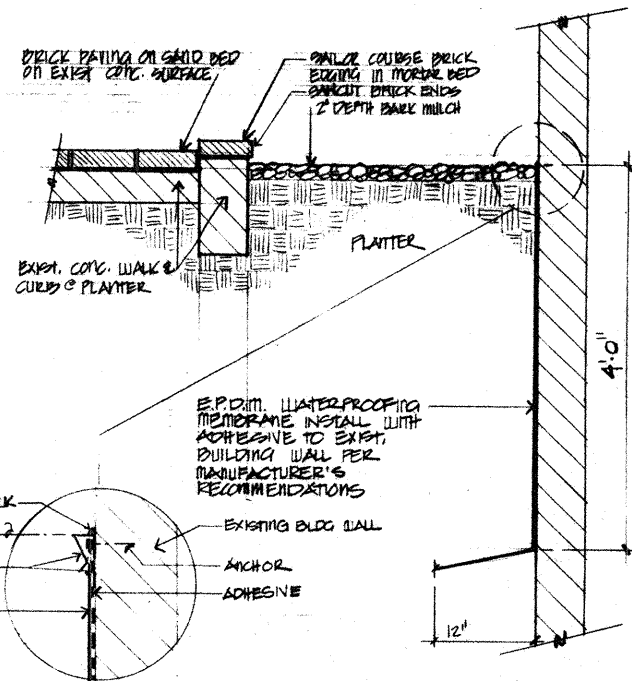
C BRICK PAVING DETAIL
L-5 1 1/2"



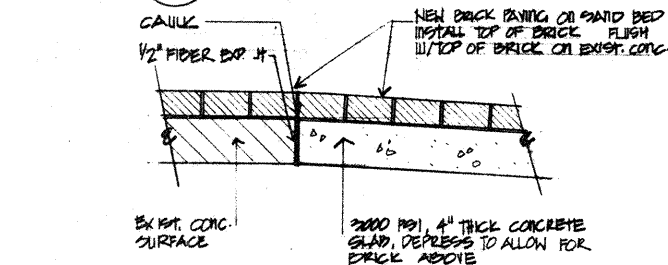
D BRICK PAVING DETAIL
L-5 1 1/2"



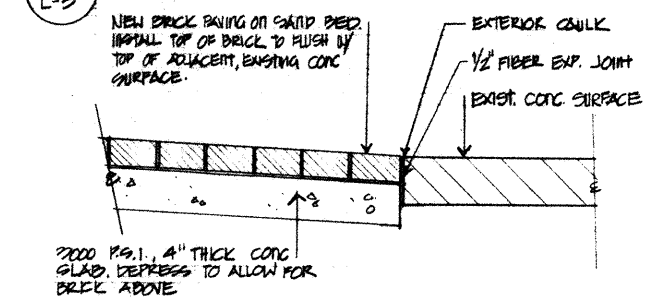
E TREE PLANTING DETAIL
L-5 MCD-0007 040794 N.T.S.



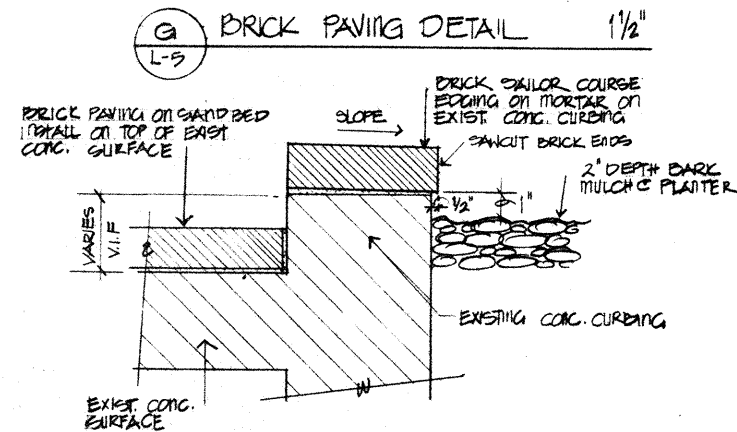
F WATER PROOFING DETAIL
L-5 1'



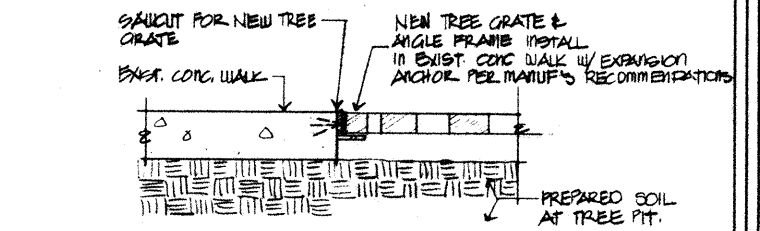
G BRICK PAVING DETAIL
L-5 1 1/2"



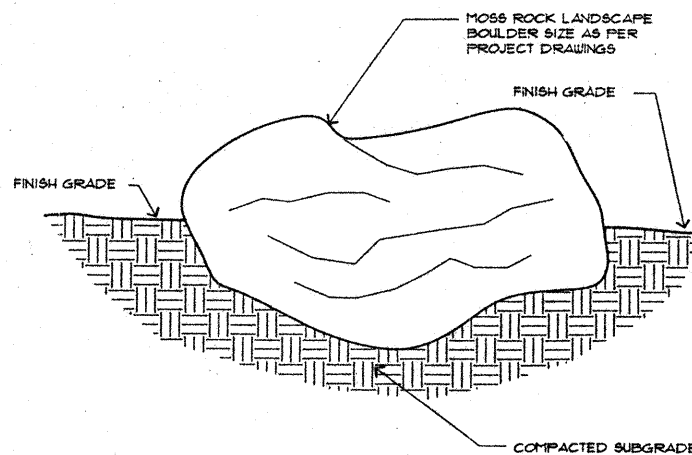
H BRICK PAVING DETAIL
L-5 1 1/2"



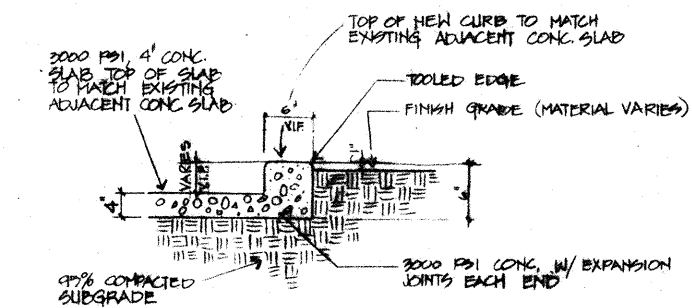
J BRICK EDGING DETAIL
L-5 1 1/2"



K TREE GRATE DETAIL
L-5 1 1/2"



L LANDSCAPE BOULDER
L-5 MCD-0091 081693 N.T.S.



M CONCRETE CURB
L-5 1'

For Information Only