

RECORD DRAWING  
BRIDGE BOULEVARD S.W. AND  
82ND STREET S.W. IMPROVEMENTS

FOR  
PAVING AND UTILITIES

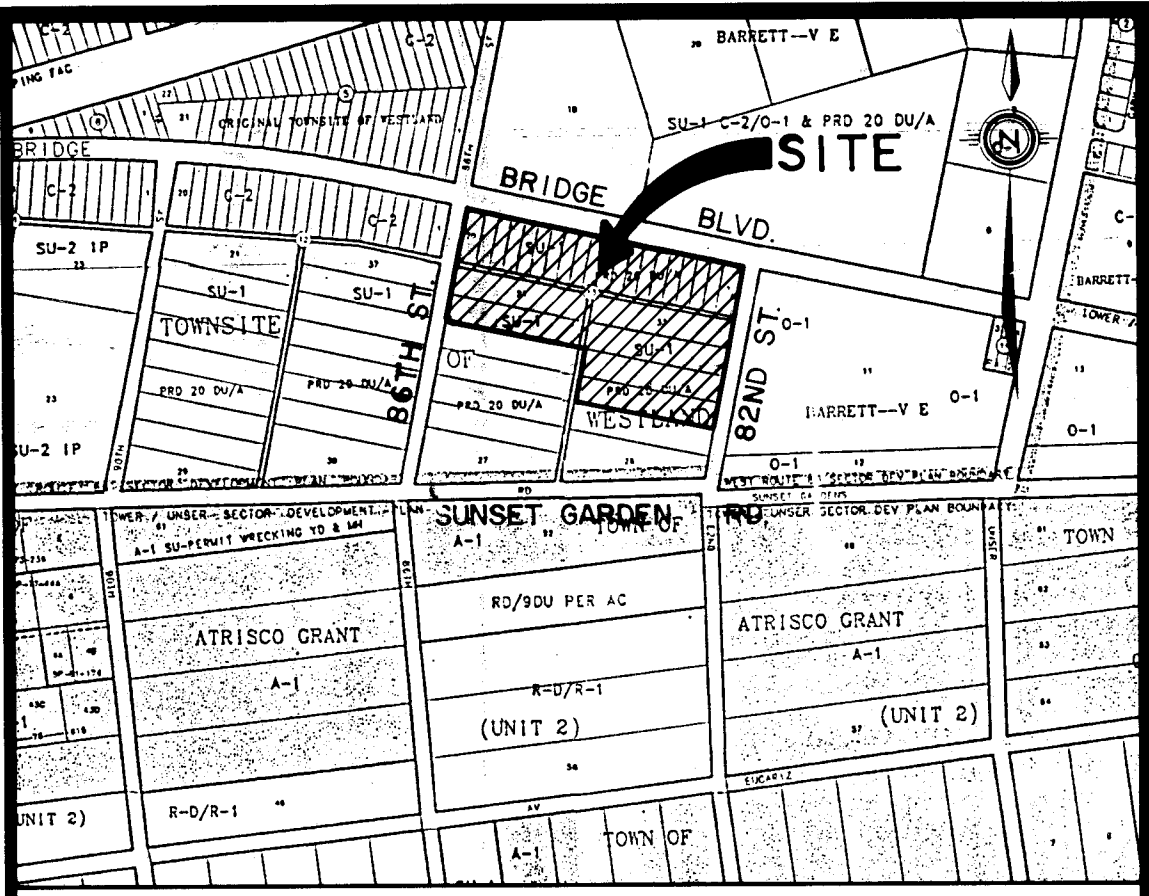
CITY OF ALBUQUERQUE, BERNALILLO COUNTY, NEW MEXICO

INDEX TO DRAWINGS

| SHEET NO. | DESCRIPTION                                     |
|-----------|---|
| 1         | COVER SHEET, VICINITY MAP AND INDEX TO DRAWINGS |
| 2         | PLAT  |
|           | <u>PAVING PLAN &amp; PROFILES</u>               |
| 3         | BRIDGE BOULEVARD S.W.                           |
| 4         | BRIDGE BOULEVARD S.W.                           |
| 5         | 82ND STREET S.W.                                |
|           | <u>UTILITY PLAN &amp; PROFILES</u>              |
| 6         | BRIDGE BOULEVARD S.W.                           |
| 7         | BRIDGE BOULEVARD S.W.                           |
| 8         | 82ND STREET S.W.                                |
| 9         | TEMPORARY DRAINAGE SWALE PLAN & PROFILE         |
| 10        | DETAILS   |

WARNING - EXISTING UTILITY LINE LOCATIONS ARE SHOWN IN AN APPROXIMATE MANNER ONLY, AND SUCH LINES MAY EXIST WHERE NONE ARE SHOWN. THE LOCATION OF ANY SUCH EXISTING LINES IS BASED UPON INFORMATION PROVIDED BY THE UTILITY COMPANY, THE OWNER, OR BY OTHERS, AND THE INFORMATION MAY BE INCOMPLETE OR MAY BE OBSOLETE BY THE TIME CONSTRUCTION COMMENCES.

THE ENGINEER HAS UNDERTAKEN LIMITED FIELD VERIFICATION OF THE LOCATION, DEPTH, SIZE, OR TYPE OF EXISTING UNDERGROUND UTILITY LINES, MAKES NO REPRESENTATION PERTAINING THERETO AND ASSUMES NO RESPONSIBILITY OR LIABILITY THEREFORE. THE CONTRACTOR SHALL INFORM ITSELF OF THE LOCATION OF ANY UTILITY LINE IN OR NEAR THE AREA OF THE WORK IN ADVANCE OF AND DURING EXCAVATION WORK. THE CONTRACTOR IS FULLY RESPONSIBLE FOR ANY AND ALL DAMAGE CAUSED BY ITS FAILURE TO LOCATE, IDENTIFY, AND PRESERVE ANY AND ALL EXISTING UTILITIES. THE CONTRACTOR SHALL COMPLY WITH STATE STATUTES, MUNICIPAL AND LOCAL ORDINANCES, RULES AND REGULATIONS PERTAINING TO THE LOCATION OF THESE LINES AND FACILITIES IN PLANNING AND CONDUCTING EXCAVATION, WHETHER BY CALLING OR NOTIFYING THE UTILITIES, COMPLYING WITH (BLUE STAKES) PROCEDURES, OR OTHERWISE.



SCALE: 1" = 750' ± VICINITY MAP K-9, L-9 & L-10

GENERAL NOTES

- ALL WORK DETAILED ON THESE PLANS TO BE PERFORMED UNDER CONTRACT SHALL, EXCEPT AS OTHERWISE STATED OR PROVIDED FROM HEREON, BE CONSTRUCTED IN ACCORDANCE WITH THE CITY OF ALBUQUERQUE STANDARD SPECIFICATIONS FOR PUBLIC WORKS CONSTRUCTION, 1986 EDITION AS AMENDED WITH UPDATE NO. 6.
- TWO (2) WORKING DAYS PRIOR TO ANY EXCAVATION, CONTRACTOR MUST CONTACT LINE LOCATING SERVICE, (260-1990) FOR LOCATION OF EXISTING UTILITIES.
- PRIOR TO CONSTRUCTION, THE CONTRACTOR SHALL EXCAVATE AND VERIFY THE HORIZONTAL AND VERTICAL LOCATIONS OF ALL OBSTRUCTIONS AND EXISTING PAYEMENT. SHOULD A CONFLICT EXIST, THE CONTRACTOR SHALL NOTIFY THE ENGINEER OR SURVEYOR SO THAT THE CONFLICT CAN BE RESOLVED WITH MINIMUM AMOUNT OF DELAY.
- THE CONTRACTOR SHALL FURNISH EMD'S ON ALL WATER AND SEWER SERVICE STUBS, CAPS AND PLUGS.
- CONTRACTOR SHALL NOTIFY THE PROJECT ENGINEER NOT LESS THAN SEVEN (7) DAYS PRIOR TO STARTING WORK IN ORDER THAT THE ENGINEER MAY TAKE NECESSARY MEASURES TO ENSURE THE PRESERVATION OF SURVEY MONUMENTS. CONTRACTOR SHALL NOT DISTURB PERMANENT WITHOUT THE CONSENT OF THE ENGINEER AND OF THE ENGINEER AND BEAR THE EXPENSE OF REPLACING ANY THAT MAY BE DISTURBED WITHOUT PERMISSION. REPLACEMENT SHALL BE DONE ONLY BY THE CITY SURVEY SECTION. WHEN A CHANGE IS MADE IN ANY ROADWAY IN WHICH A PERMANENT SURVEY MONUMENT IS LOCATED, CONTRACTOR SHALL, AT HIS OWN EXPENSE, ADJUST THE MONUMENT COVER TO THE NEW GRADE UNLESS OTHERWISE SPECIFIED. REFER TO SECTION 4.4 OF GENERAL CONDITIONS OF THE CITY OF ALBUQUERQUE STANDARD SPECIFICATIONS FOR PUBLIC WORKS CONSTRUCTION.
- RESTRAINED JOINTS ARE REQUIRED AT ALL WATER LINE BENDS, TEES, CAPS AND GATE VALVES.
- THE PUBLIC WATER LINE MUST BE A MINIMUM OF 18" ABOVE THE SEWER LINE AT ALL CROSSINGS.
- THE CONTRACTOR SHALL CONTACT WATER SYSTEMS DIVISION (857-8200) FIVE (5) WORKING DAYS PRIOR TO NEEDING SHUT-OFF OR TURN-ON OF VALVES. ONLY CITY WATER SYSTEMS PERSONNEL ARE AUTHORIZED TO OPERATE VALVE.
- THREE (3) WORKING DAYS PRIOR TO BEGINNING CONSTRUCTION, THE CONTRACTOR SHALL SUBMIT TO THE CONSTRUCTION COORDINATION DIVISION A DETAILED CONSTRUCTION SCHEDULE. TWO (2) WORKING DAYS PRIOR TO CONSTRUCTION, THE CONTRACTOR SHALL OBTAIN A BARRICADING PERMIT FROM THE CONSTRUCTION COORDINATION DIVISION. CONTRACTOR SHALL NOTIFY BARRICADE ENGINEER (768-2551) PRIOR TO OCCUPYING AN INTERSECTION. SEE SECTION 19 OF THE SPECIFICATIONS.
- ALL STREET STRIPING ALTERED OR DESTROYED SHALL BE REPLACED IN KIND BY CONTRACTOR TO LOCATION AND IN KIND AS EXISTING OR AS INDICATED BY THIS PLAN SET. ALL NEW STRIPING SHALL BE PLASTIC AS PER CITY STANDARDS.
- ANY WORK AFFECTING AN ARTERIAL ROADWAY REQUIRES TWENTY-FOUR HOUR CONSTRUCTION.
- ALL HANDICAP RAMPS WILL MEET ADA STANDARDS PER CITY'S REVISED SPECIFICATIONS.

RECORD DRAWING

SURVEYOR'S CERTIFICATION

"I Kevin Daggett a duly qualified Registered Professional Surveyor under the laws of the State of New Mexico, do hereby certify that the 'record' information shown on these drawings is based upon field survey checks performed at my direction or under my supervision, and that this 'record' information is true and correct to the best of my knowledge and belief.

*Kevin C. Daggett*  
Kevin Daggett  
P.S. #11000

8/12/97  
Date.

APPROVAL OF AS BUILT DRAWINGS  
CHIEF CONSTRUCTION ENGINEER  
DATE 8-28-97

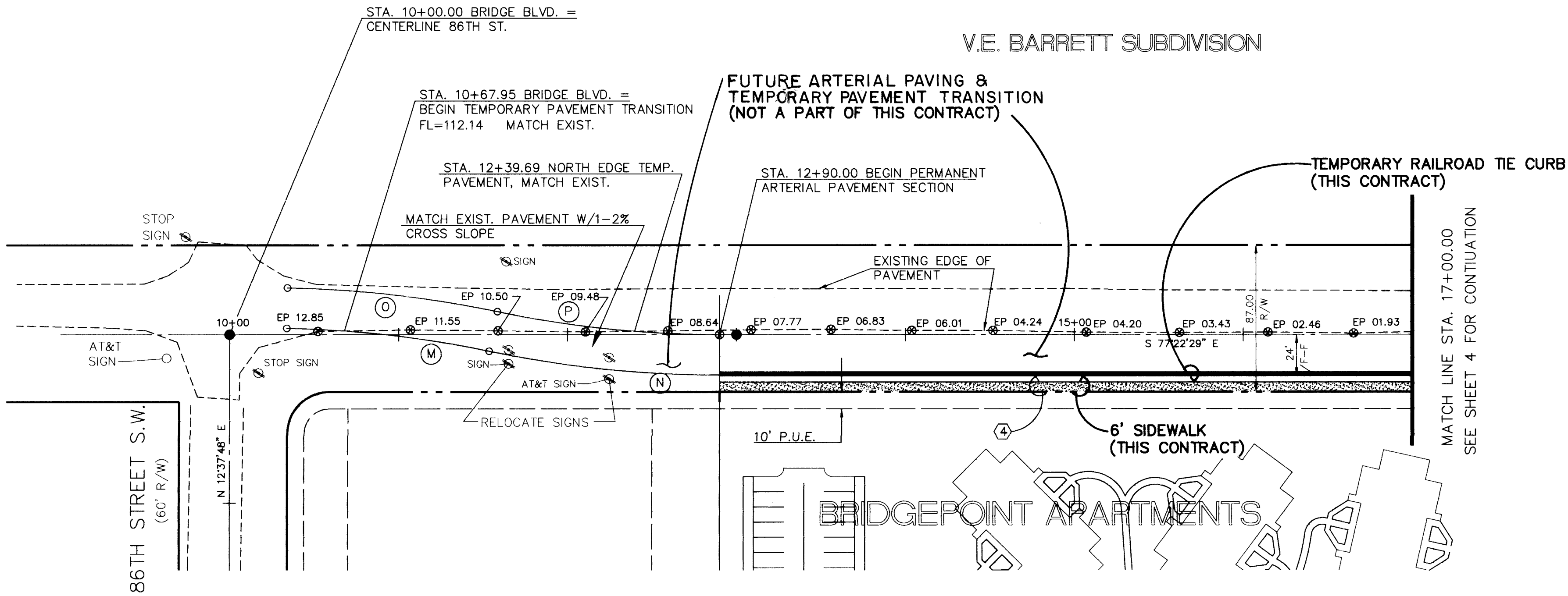
| REV. | SHEETS | CITY ENGINEER | DATE | USER DEPARTMENT | DATE | USER DEPARTMENT | DATE |
|------|--------|---------------|------|-----------------|------|-----------------|------|
| 1    |        |               |      |                 |      |                 |      |

|                                |   |   |
|--------------------------------|---|---|
| ENGINEER'S SEAL<br><br>2/16/96 | DATE JUNE, 1995<br>SCALE AS SHOWN<br>DESIGNED D.L.H.<br>DRAWN D.L.W.<br>JOB NO. 57-01-PRE<br>LAND PLANNING P.O. Box 1328<br>CORRALES, N.M. 87048<br>SURVEYING<br>community sciences corporation<br>APPROVED FOR CONSTRUCTION<br><i>Bill J. Goshel</i><br>CITY ENGINEER<br>7-11-96<br>DATE | PROJECT NO.<br>5226.90<br>SHEET 1 OF 10 |
|--------------------------------|---|---|

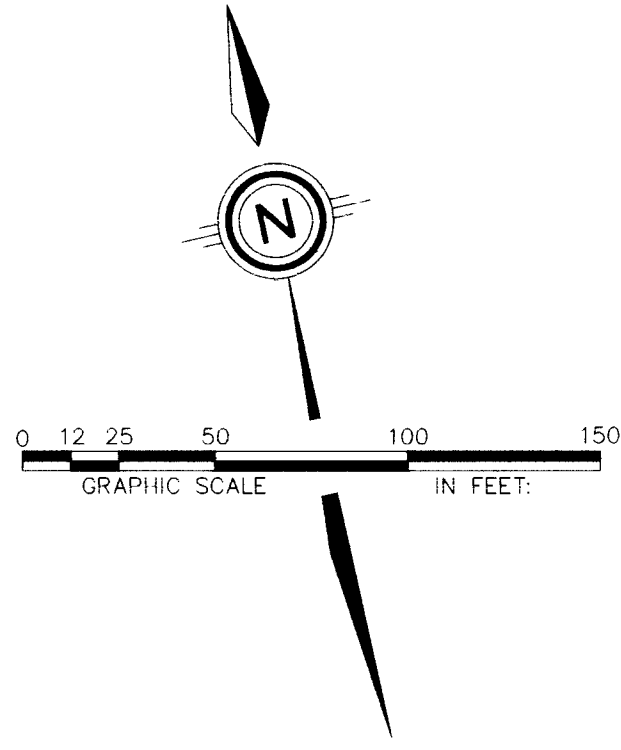








BRIDGE BLVD. S.W.  
(STANDARD CURB AND GUTTER W/ARTERIAL PAVING)



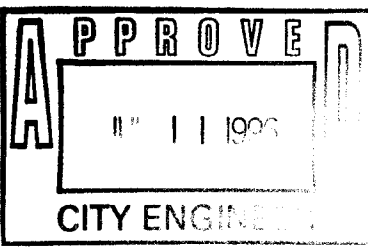
| LEGEND |                                     |
|--------|-------------------------------------|
| 73.6   | EXISTING SPOT ELEVATION (GRND & TC) |
|        | PROPOSED SIDEWALK                   |
|        | PROPOSED STANDARD CURB & GUTTER     |
|        | TEMPORARY PAVEMENT                  |
|        | TEMPORARY RAILROAD TIE CURB         |

KEYNOTES:

- WHEELCHAIR RAMP PER COA STD. DWG 2441.
- CONCRETE VALLEY GUTTER PER COA STD. DWG 2420.
- 4 FT. SIDEWALK TO BE CONSTRUCTED WITH THIS PROJECT.
- 6 FT. SIDEWALK TO BE CONSTRUCTED WITH THIS PROJECT.
- 50 FT. CROWN TRANSITION PER COA STD. DWG 2401.
- TEMPORARY ASPHALT CURB PER COA STD. DWG 2415.

| EDGE OF PAVEMENT (CURVE DATA) |        |        |           |  |
|-------------------------------|--------|--------|-----------|--|
| Curve                         | Radius | Arc    | Delta     |  |
| M                             | 638.00 | 86.60  | 007-46-38 |  |
| N                             | 662.00 | 137.34 | 011-53-13 |  |
| O                             | 662.00 | 125.29 | 010-50-38 |  |
| P                             | 638.00 | 132.36 | 011-53-13 |  |

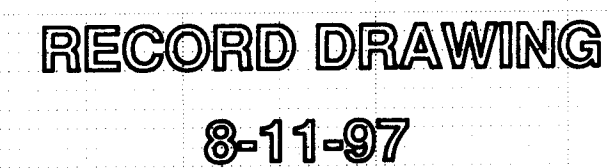
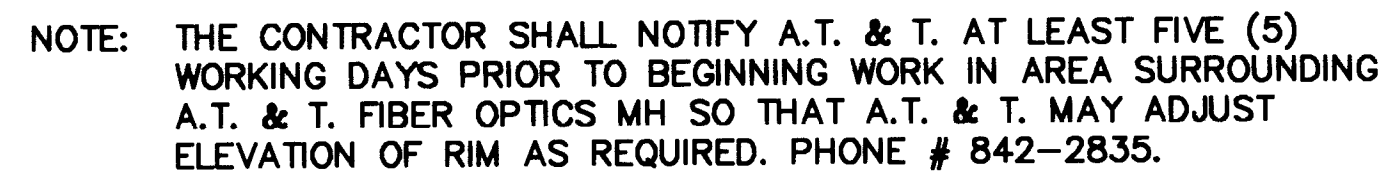
SCALE:  
HORIZ: 1" = 50'  
VERT: 1" = 10'



community sciences corporation  
LAND PLANNING P.O. Box 1328  
ENGINEERING Corrales, N.M. 87048  
SURVEYING

|   |                    |              |              |               |         |
|---|--------------------|--------------|--------------|---------------|---------|
| CITY OF ALBUQUERQUE<br>PUBLIC WORKS DEPARTMENT<br>ENGINEERING GROUP                                 |                    |              |              |               |         |
| TITLE: BRIDGE BLVD. S.W. & 82ND ST. S.W. IMPROVEMENTS<br>PAVING PLAN & PROFILE<br>BRIDGE BLVD. S.W. |                    |              |              |               |         |
| APPROVALS   | ENGINEER           | DATE         | APPROVALS    | ENGINEER      | DATE    |
| DRC CHAIRMAN  | <i>B.G. Gentry</i> | 4-9-96       | WATER        | <i>NA RWP</i> | 2-21-96 |
| TRANSPORTATION  | <i>See notes</i>   | 3-1-96       | WASTE WATER  |               |         |
| HYDROLOGY   | <i>JPC</i>         | 3-3-96       | A.M.A.F.C.A. |               |         |
| PROJECT NO. 5226.90   |                    | MAP NO. L-10 |              | SHEET 3 OF 10 |         |

RECORD DRAWING  
8-11-97



SCANNED BY  
BY LASON

KEYNOTES:

- ① WHEELCHAIR RAMP PER COA STD.  
DWG 2441.
- ② CONCRETE VALLEY GUTTER PER COA  
STD. DWG 2420.
- ③ 4 FT. SIDEWALK TO BE CONSTRUCTED  
WITH THIS PROJECT.
- ④ 6 FT. SIDEWALK TO BE CONSTRUCTED  
WITH THIS PROJECT.
- ⑤ 50 FT. CROWN TRANSITION PER COA  
STD. DWG 2401.
- ⑥ TEMPORARY ASPHALT CURB PER COA  
STD. DWG 2415.
- ⑦ MATCH TO EXISTING EDGE OF  
PAVEMENT

| CURB CURVE DATA<br>(FACE OF CURB) |        |        |           |
|-----------------------------------|--------|--------|-----------|
| Curve                             | Radius | Arc    | Delta     |
| A                                 | 20.00  | 31.42  | 090-00-00 |
| B                                 | 20.00  | 31.42  | 090-00-00 |
| C                                 | 25.00  | 39.27  | 090-00-35 |
| D                                 | 25.00  | 39.27  | 089-59-25 |
| I                                 | 662.00 | 132.61 | 011-28-40 |
| J                                 | 638.00 | 76.45  | 006-51-57 |
| K                                 | 638.00 | 127.81 | 011-28-40 |
| L                                 | 662.00 | 97.15  | 008-24-30 |

APPROVED

11/1/1996

CITY ENGINEER

*community  
sciences  
corporation*

PLANNING      ENGINEERING      SURVEYING  
Box 1328      Corcoran, N.M. 87048

CITY OF ALBUQUERQUE  
PUBLIC WORKS DEPARTMENT  
ENGINEERING GROUP

TITLE: BRIDGE BLVD. S.W. & 82ND ST. S.W. IMPROVEMENTS  
PAVING PLAN & PROFILE  
BRIDGE BLVD. S.W.

| APPROVALS      | ENGINEER             | DATE    | APPROVALS         | ENGINEER       | DATE    |
|----------------|----------------------|---------|-------------------|----------------|---------|
| DRC CHAIRMAN   | <i>B.G. Gendley</i>  | 4-9-96  | WATER             | <b>NIA RWK</b> | 2-21-99 |
| TRANSPORTATION | <i>Paul Anderson</i> | 3-1-96  | WASTE WATER       |                |         |
| HYDROLOGY      | <b>DRC</b>           | 3-13-96 | A. M. A. F. C. A. |                |         |

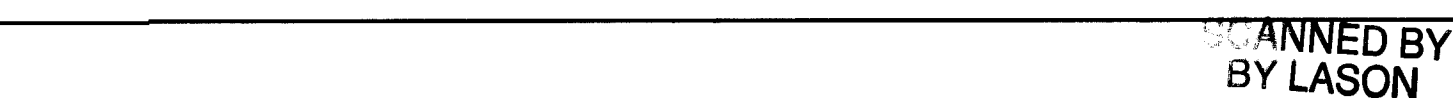
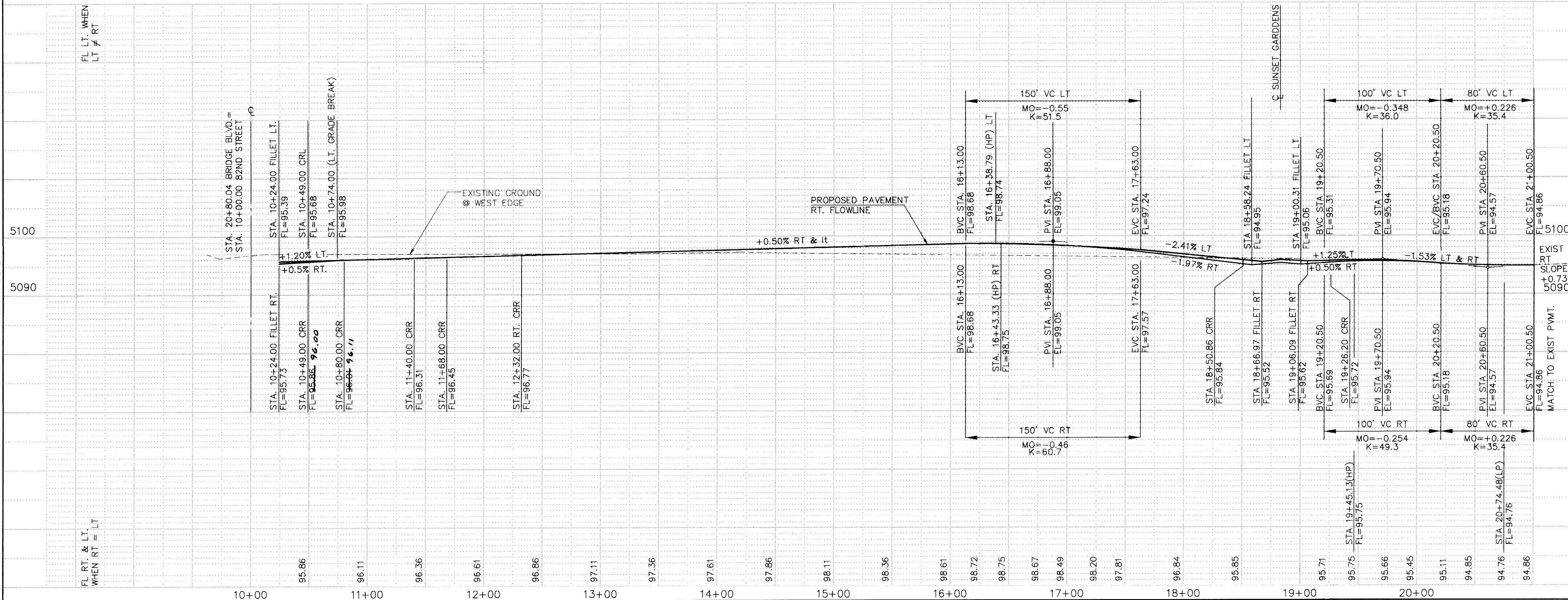
|             |         |         |      |       |   |    |    |
|-------------|---------|---------|------|-------|---|----|----|
| PROJECT NO. | 5226.90 | MAP NO. | L-10 | SHEET | 4 | OF | 10 |
|-------------|---------|---------|------|-------|---|----|----|

|   |   |   |   |   |   |   |   |   |    |    |    |    |    |    |
|---|---|---|---|---|---|---|---|---|----|----|----|----|----|----|
| 1 | 2 | 3 | 4 | 5 | 6 | 7 | 8 | 9 | 10 | 11 | 12 | 13 | 14 | 16 |
| 2 | 6 | - | 5 | 2 | 2 | 6 | . | 9 | 0  |    | 0  | 4  | 9  | 7  |

| SURVEY INFORMATION |                    | FIELD NOTES |  | DEVELOPMENT INFORMATION |      | CONTRACTOR INFORMATION |      |
|--------------------|--------------------|-------------|--|-------------------------|------|------------------------|------|
| NO.                | BY                 | DATE        |  | NO.                     | DATE | NAME                   | DATE |
| 1                  | COMMUNITY SCIENCES | JUNE/94     | ACS MONUMENT "79-K" IS A 3 1/4" ALUMINUM CAP LOCATED 0.58 MILES WEST OF THE INTERSECTION OF CENTRAL AVE. AND INSERPTOR'S BLVD. IN THE CENTER MEDIAN OF CENTRAL AVE. THE STATION IS 530' EAST OF THE CENTERLINE OF 90TH ST. ELEV. = 5137.36 | WORK DONE BY            | DATE | NAME                   | DATE |
|                    |                    |             |  | INSERPTOR'S             |      | JOE HALE               |      |
|                    |                    |             |  | ACCEPTANCE BY           |      |                        |      |
|                    |                    |             |  | CERTIFICATION BY        |      |                        |      |
|                    |                    |             |  | DRAWINGS                | DATE |                        |      |
|                    |                    |             |  | CORRECTED BY            |      |                        |      |
|                    |                    |             |  | MICRO-FILM INFORMATION  |      |                        |      |
|                    |                    |             |  | RECORDED BY             |      |                        |      |
|                    |                    |             |  | NO.                     |      |                        |      |

| NO.         |  | DATE | REMARKS | BY         |
|-------------|--|------|---------|------------|
| REVISIONS   |  |      |         |            |
| DESIGN      |  |      |         |            |
| DESIGNED BY |  | DLH  | DATE    | JUNE, 1995 |
| DRAWN BY    |  | DLW  | DATE    | JUNE, 1995 |
| CHECKED BY  |  |      | DATE    |            |



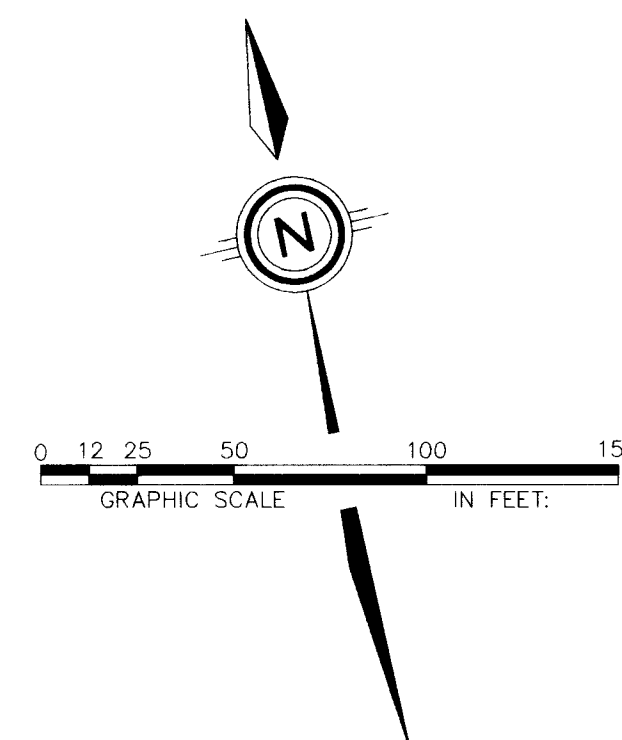


|             |         |         |      |       |   |    |    |
|-------------|---------|---------|------|-------|---|----|----|
| PROJECT NO. | 5226.90 | MAP NO. | 1-10 | SHEET | 5 | OF | 10 |
|-------------|---------|---------|------|-------|---|----|----|

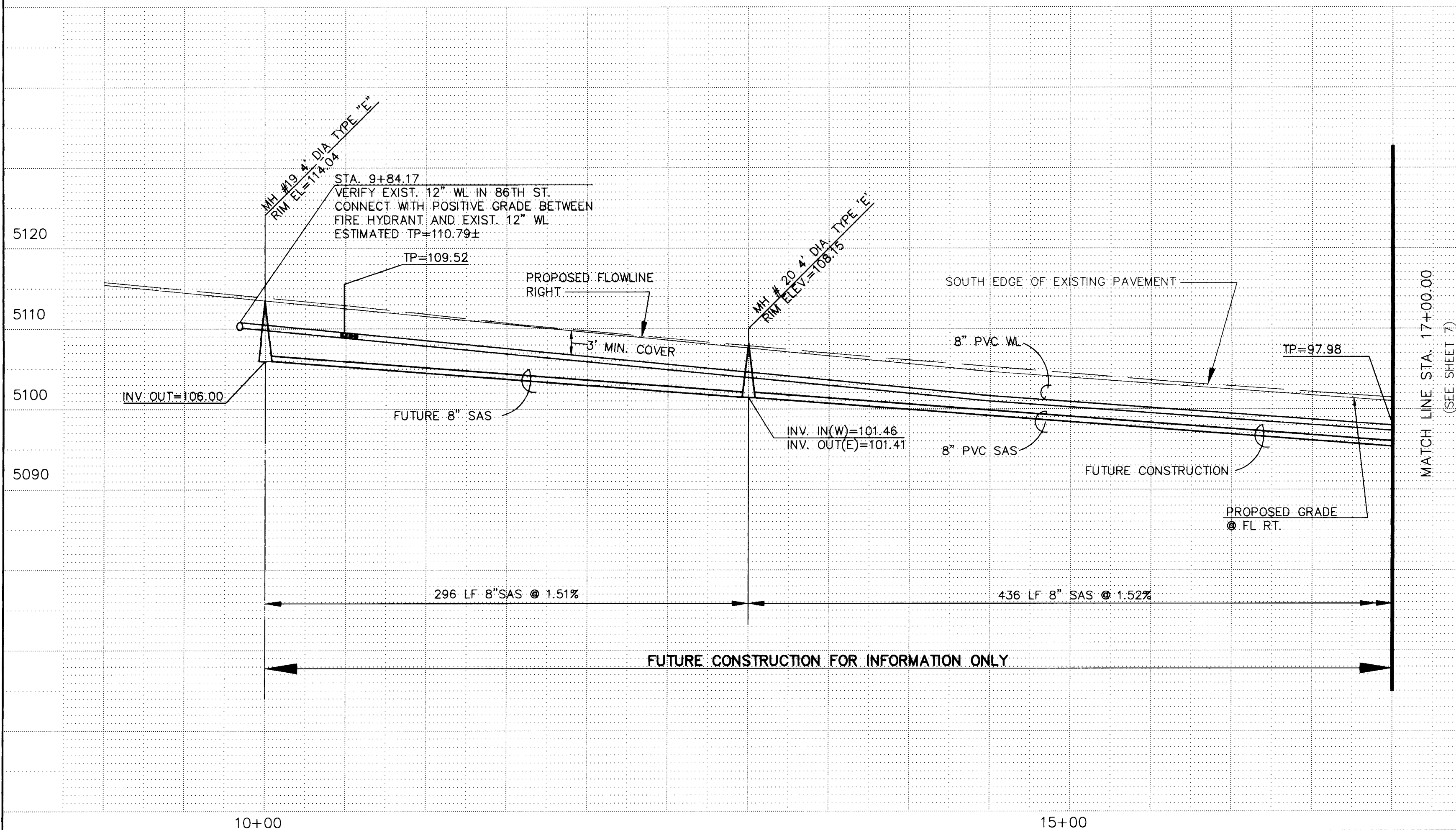
|                  |      |         |           |
|------------------|------|---------|-----------|
| NO.              | DATE | REMARKS | BY        |
| <b>REVISIONS</b> |      |         |           |
| <b>DESIGN</b>    |      |         |           |
| DESIGNED BY      | DLH  | DATE    | JAN. 1996 |
| DRAWN BY         | DLW  | DATE    | JAN. 1996 |
| CHECKED BY       |      | DATE    |           |

|                                       |                     |                 |
|---------------------------------------|---------------------|-----------------|
| VERQUE<br>PARTMENT<br>GROUP           |                     |                 |
| ST. S.W. IMPROVEMENTS<br>PROFILE      |                     |                 |
| APPROVALS<br>R<br>E WATER<br>A.F.C.A. | ENGINEER<br>NIA RWK | DATE<br>2-28-91 |
| 10<br>SHEET                           | 5<br>OF             | 10              |

|   |   |   |   |   |   |   |   |   |    |    |    |    |    |    |
|---|---|---|---|---|---|---|---|---|----|----|----|----|----|----|
| 1 | 2 | 3 | 4 | 5 | 6 | 7 | 8 | 9 | 10 | 11 | 12 | 13 | 14 | 1b |
| 2 | 6 | - | 5 | 2 | 2 | 6 | . | 9 | 0  |    | 0  | 5  | 9  | 7  |



NOTE 1: SANITARY SEWER SHOWN FOR BONDING PURPOSES ONLY. FUTURE CONSTRUCTION, NOT A PART OF THIS CONTRACT. PRIOR TO CONSTRUCTION OF SAS CONFLICT AND COMPATIBILITY WITH OTHER EXISTING OR PLANNED SERVICES SHOULD BE VERIFIED BY DESIGN ENGINEER.



RECORD DRAWING  
8-11-97

| UTILITY LEGEND         |            |            |
|------------------------|------------|------------|
| DESCRIPTION            | PROPOSED   | EXISTING   |
| SANITARY SEWER LINE    | — 8" SAS — | — 8" SAS — |
| ENCASEMENT             |            |            |
| SANITARY SEWER MANHOLE |            |            |
| SAS SERVICE CONNECTION | — S —      | — S —      |
| WATER LINE             | — W-6" —   | — W-6" —   |
| GATE VALVE             |            |            |
| FIRE HYDRANTS          |            |            |
| WATER SERVICE/ METER   |            |            |
| TEES                   |            |            |
| CROSSES                |            |            |
| BENDS                  |            |            |
| CAPS & PLUGS           |            |            |
| UNDERGROUND TELEPHONE  | N/A        | — UT —     |

| RESTRAINED JOINT LENGTHS (FEET) | FOR TEES SIZE | RUN LR | BRANCH LR |
|---------------------------------|---------------|--------|-----------|
|                                 | 8" x 8"       | 13'    | 3'        |
|                                 | 8" x 6"       | 7'     | 5'        |

| FOR VALVES AND DEAD ENDS |     |
|--------------------------|-----|
| SIZE                     | LR  |
| 8"                       | 60' |

LR= LENGTH TO BE RESTRAINED EACH SIDE OF THE FITTING. FOR TEES, ALL THREE LEGS SHALL BE RESTRAINED FOR A DISTANCE OF "LR". FOR REDUCERS, "LR" IS GIVEN FOR THE LARGER DIAMETER SIDE OF THE FITTING AND NO RESTRAINING IS REQUIRED ON THE SMALL SIDE OF THE FITTING. GATE VALVES SHALL BE MECHANICALLY RESTRAINED AND INSTALLED WITH CONCRETE BLOCKING PER COA STD. DWG. 2333 IN ADDITION TO THE MECHANICALLY RESTRAINED LENGTHS. ALL CAPS SHALL BE INSTALLED WITH CONCRETE BLOCKING PER COA STD. DWG. 2320. RESTRAIN ALL JOINTS IN FIBER HYPNANTS.

WATER SHUT-OFF PLAN

- SHUT OFF GV [1] TO MAKE NON-PRES-SURE CONNECTION OF 8" WL IN 82nd ST. APPROX. 200' SOUTH OF SUNSET RD.
- SHUT OFF GV [2] AND [3] TO MAKE NON-PRESSURE CONNECTION OF SERVICE LINES TO 8" WL IN 82nd ST.
- SHUT OFF GV [2] TO MAKE NON-PRES-SURE CONNECTION ON 82nd ST. AT BRIDGE BLVD AND MAKE A PRESSURE CONNECTION FROM 8" WL TO EXISTING 12" WL AT 86th ST AND BRIDGE BLVD INTERSECTION USING A TAPPING SLEEVE.
- CONTRACTOR SHALL CONTACT WATER SYSTEMS DIVISION (857-8200) FIVE-(5) WORKING DAYS PRIOR TO VALVE SHUT OFF ONLY WATER SYSTEMS PERSONEL ARE AUTHORIZED TO OPERATE VALVES.
- SEE SHEET 8 FOR VALVE LOCATIONS.

| SCALE:          |   |
|-----------------|---|
| HORIZ: 1" = 50' | <i>community sciences corporation</i>                                     |
| VERT: 1" = 10'  | LAND PLANNING ENGINEERING SURVEYING<br>P.O. Box 1328 Corrales, N.M. 87046 |

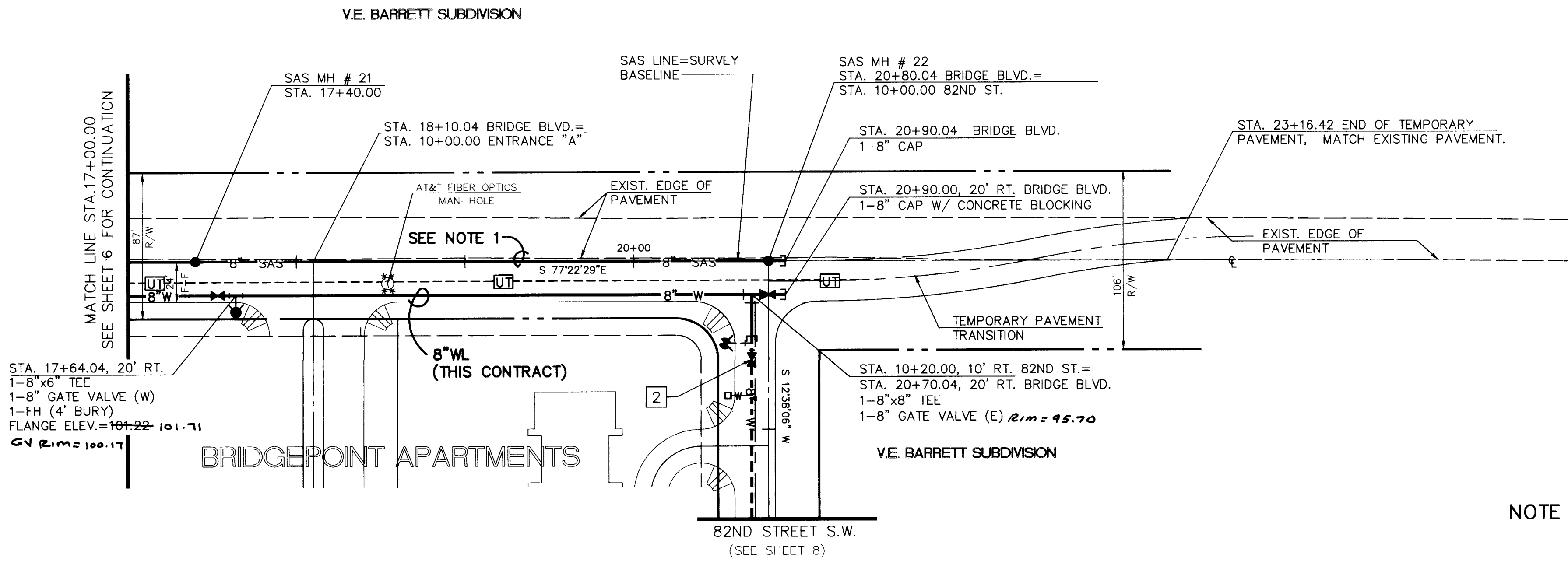
  

| CITY OF ALBUQUERQUE<br>PUBLIC WORKS DEPARTMENT<br>ENGINEERING GROUP                                  |                  |         |              |
|--|------------------|---------|--------------|
| TITLE: BRIDGE BLVD. S.W. & 82ND ST. S.W. IMPROVEMENTS<br>UTILITY PLAN & PROFILE<br>BRIDGE BLVD. S.W. |                  |         |              |
| APPROVALS  | ENGINEER         | DATE    | APPROVALS    |
| DRC CHAIRMAN   | <i>28.6.2004</i> | 4-9-96  | WATER        |
| TRANSPORTATION   | <i>28.6.2004</i> | 3-1-96  | WASTE WATER  |
| HYDROLOGY  | <i>28.6.2004</i> | 3-13-96 | A.M.A.F.C.A. |

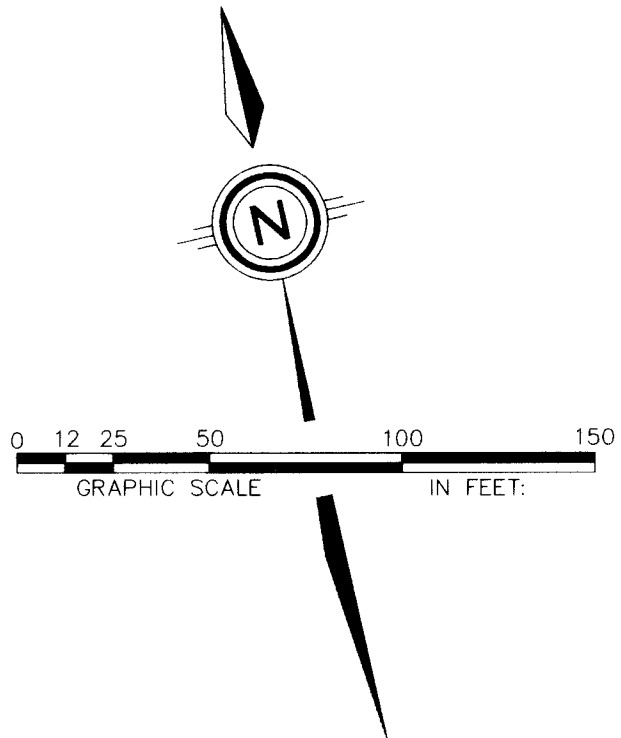
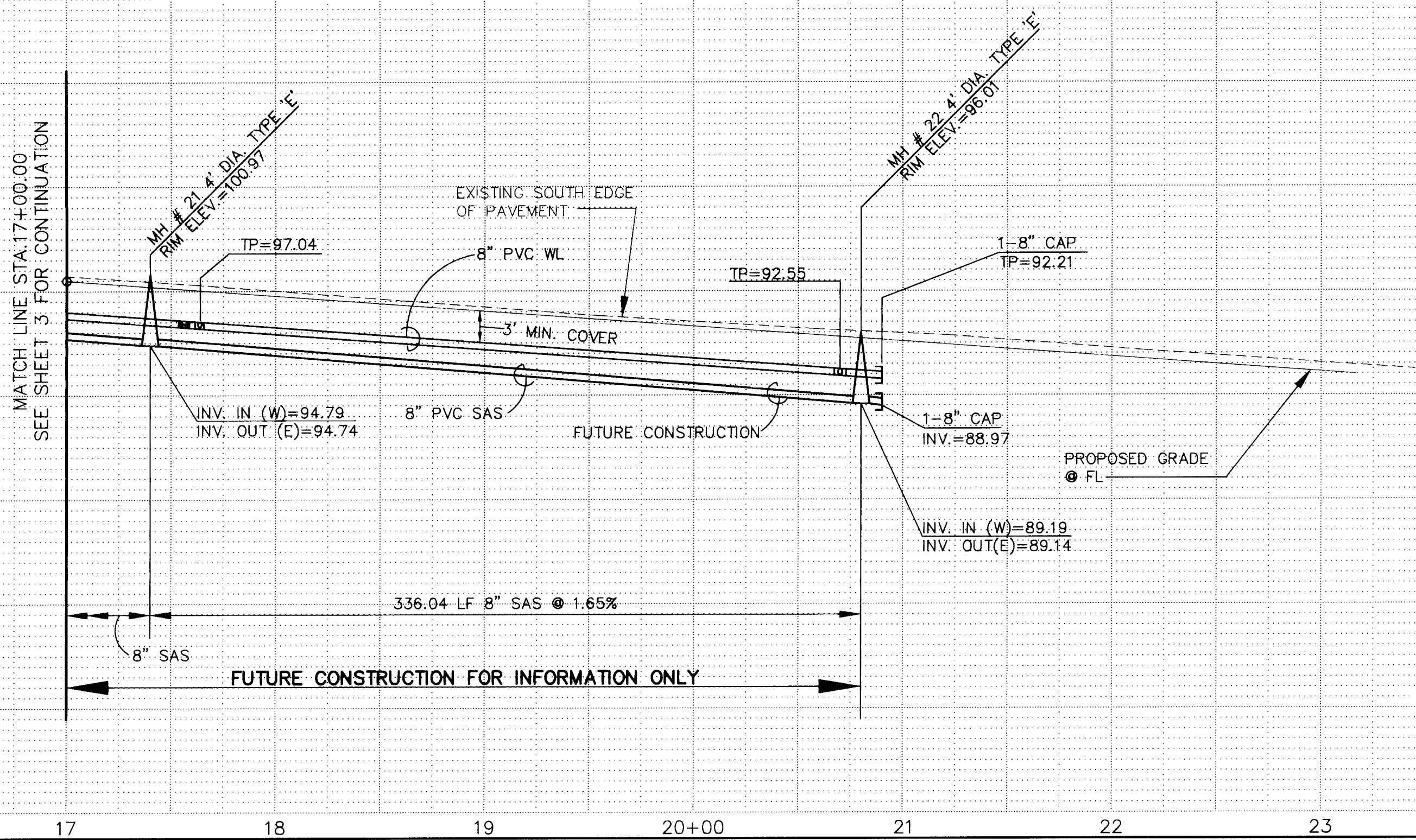
| PROJECT NO. 5226.90 |  | MAP NO. L-10 | SHEET 6 OF 10 |
|---------------------|--|--------------|---------------|
|---------------------|--|--------------|---------------|





BRIDGE BLVD. S.W.

NOTE 1: SANITARY SEWER SHOWN FOR BONDING PURPOSES ONLY. FUTURE CONSTRUCTION, NOT A PART OF THIS CONTRACT. PRIOR TO CONSTRUCTION OF SAS, CONFLICT AND COMPATIBILITY WITH OTHER EXISTING OR PLANNED SERVICES SHOULD BE VERIFIED BY DESIGN ENGINEER.



| UTILITY LEGEND         |            |            |
|------------------------|------------|------------|
| DESCRIPTION            | PROPOSED   | EXISTING   |
| SANITARY SEWER LINE    | — 8" SAS — | — 8" SAS — |
| SANITARY SEWER MANHOLE | — 8" SAS — | — 8" SAS — |
| SAS SERVICE CONNECTION | — S —      | — S —      |
| WATER LINE             | — W —      | — W —      |
| GATE VALVE             | — G —      | — G —      |
| FIRE HYDRANTS          | — F —      | — F —      |
| WATER SERVICE/ METER   | — W —      | — W —      |
| TEES                   | — T —      | — T —      |
| CROSSES                | — C —      | — C —      |
| BENDS                  | — B —      | — B —      |
| CAPS & PLUGS           | — P —      | — P —      |
| UNDERGROUND TELEPHONE  | N/A        | — T —      |

RESTRAINED JOINT LENGTHS (FEET)

| FOR TEES                 | RUN | BRANCH |
|--------------------------|-----|--------|
| SIZE                     | LR  | LR     |
| 8"x8"                    | 13' | 3'     |
| 8"x6"                    | 7'  | 5'     |
| FOR VALVES AND DEAD ENDS |     |        |
| SIZE                     | LR  |        |
| 8"                       | 60' |        |

LR= LENGTH TO BE RESTRAINED EACH SIDE OF THE FITTING. FOR TEES, ALL THREE LEGS SHALL BE RESTRAINED FOR A DISTANCE OF "LR". FOR REDUCERS, "LR" IS GIVEN FOR THE LARGER DIAMETER SIDE OF THE FITTING AND NO RESTRAINING IS REQUIRED ON THE SMALL SIDE OF THE FITTING. GATE VALVES SHALL BE MECHANICALLY RESTRAINED AND INSTALLED WITH CONCRETE BLOCKING PER COA STD. DWG. 2333 IN ADDITION TO THE MECHANICALLY RESTRAINED LENGTHS. ALL CAPS SHALL BE INSTALLED WITH CONCRETE BLOCKING PER COA STD. DWG. 2320. RESTRAIN ALL JOINTS IN FIRE HYDRANTS.

- WATER SHUT-OFF PLAN
1. SHUT OFF GV [1] TO MAKE NON-PRES-SURE CONNECTION OF 8" WL IN 82nd ST. APPROX. 200' SOUTH OF SUNSET RD.
  2. SHUT OFF GV [2] AND [3] TO MAKE NON-PRESSURE CONNECTION OF SERVICE LINES TO 8" WL IN 82nd ST.
  3. SHUT OFF GV [2] TO MAKE NON-PRES-SURE CONNECTION ON 82nd ST. AT BRIDGE BLVD AND MAKE A PRESSURE CONNECTION FROM 8" WL TO EXISTING 12" WL AT 86th ST AND BRIDGE BLVD INTERSECTION USING A TAPPING SLEEVE.
  4. CONTRACTOR SHALL CONTACT WATER SYSTEMS DIVISION (857-8200) FIVE (5) WORKING DAYS PRIOR TO VALVE SHUT OFF ONLY WATER SYSTEMS PERSONEL ARE AUTHORIZED TO OPERATE VALVES.
  5. SEE SHEET 8 FOR VALVE LOCATIONS.

SCALE :  
HORIZ : 1" = 50'  
VERT : 1" = 10'

CITY OF ALBUQUERQUE  
PUBLIC WORKS DEPARTMENT  
ENGINEERING GROUP

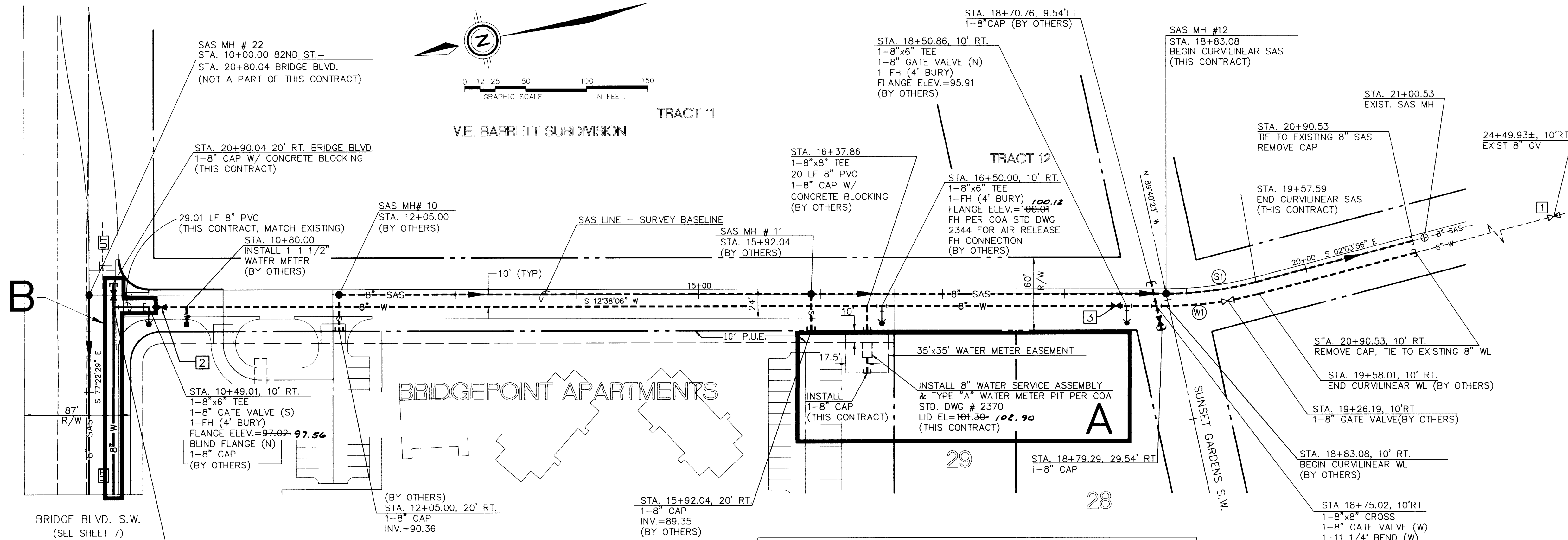
TITLE : BRIDGE BLVD. S.W. & 82ND ST. S.W. IMPROVEMENTS  
UTILITY PLAN & PROFILE  
BRIDGE BLVD. S.W.

APPROVE  
CITY ENGINEER

| APPROVALS      | ENGINEER  | DATE    | APPROVALS    | ENGINEER | DATE    |
|----------------|-----------|---------|--------------|----------|---------|
| DRG. CHAIRMAN  | DR. KELLY | 4-9-96  | WATER        | R.W. KAW | 2-21-96 |
| TRANSPORTATION | DR. KELLY | 3-1-96  | WASTE WATER  |          |         |
| HYDROLOGY      | JPC       | 3-13-96 | A.M.A.F.C.A. |          |         |

PROJECT NO. 5226.90  
MAP NO. L-10  
SHEET 7 OF 10





| UTILITY CURVE DATA |        |       |           |            |            |             |
|--------------------|--------|-------|-----------|------------|------------|-------------|
| CURVE ID           | RADIUS | ARC   | DELTA     | CHORD DIST | CHORD BRG  | Δ/20' JOINT |
| S1                 | 290.47 | 74.53 | 014-42-02 | 74.32      | N05-17-05E | 3'56'42"    |
| W1                 | 300.47 | 77.09 | 014-42-02 | 76.88      | N05-17-05E | 3'48'36"    |

| UTILITY LEGEND           |          |          |
|--------------------------|----------|----------|
| DESCRIPTION              | PROPOSED | EXISTING |
| SANITARY SEWER LINE      | 8" SAS   | 8" SAS   |
| ENCASEMENT               |          |          |
| SANITARY SEWER MANHOLE   |          |          |
| SAS SERVICE CONNECTION   |          |          |
| STORM DRAIN LINE         | SD-30"   | SD-30"   |
| STORM DRAIN MANHOLE      |          |          |
| STORM DRAIN INLETS       |          |          |
| WATER LINE               | W-6"     | W-6"     |
| GATE VALVE               |          |          |
| BUTTERFLY VALVE          |          |          |
| FIRE HYDRANTS            |          |          |
| REDUCERS                 |          |          |
| WATER SERVICE/ METER     |          |          |
| TEES                     |          |          |
| CROSSES                  |          |          |
| BENDS                    |          |          |
| CAPS & PLUGS             |          |          |
| GAS LINES                | N/A      |          |
| OVERHEAD ELECTRICAL LINE | N/A      |          |
| UNDERGROUND ELECTRICAL   | N/A      |          |
| OVERHEAD TELEPHONE       | N/A      |          |
| UNDERGROUND TELEPHONE    | N/A      |          |
| CABLE TELEVISION         | N/A      |          |
| POWER OR TELEPHONE POLE  | N/A      |          |

| RESTRAINED JOINT LENGTHS (FEET) |        |           |
|---------------------------------|--------|-----------|
| FOR TEES                        | RUN LR | BRANCH LR |
| 8"x8"                           | 13'    | 3'        |
| 8"x6"                           | 7'     | 5'        |
| FOR VALVES AND DEAD ENDS        |        |           |
| SIZE                            | LR     |           |
| 8"                              | 60'    |           |

LR= LENGTH TO BE RESTRAINED EACH SIDE OF THE FITTING. FOR TEES, ALL THREE LEGS SHALL BE RESTRAINED FOR A DISTANCE OF "LR". FOR REDUCERS, "LR" IS GIVEN FOR THE LARGER DIAMETER SIDE OF THE FITTING AND NO RESTRAINING IS REQUIRED ON THE SMALL SIDE OF THE FITTING. GATE VALVES SHALL BE MECHANICALLY RESTRAINED AND INSTALLED WITH CONCRETE BLOCKING PER COA STD. DWG. 2333 IN ADDITION TO THE MECHANICALLY RESTRAINED LENGTHS. ALL CAPS SHALL BE INSTALLED WITH CONCRETE BLOCKING PER COA STD. DWG. 2320. RESTRAIN ALL JOINTS IN FIRE HYDRANTS.

- WATER SHUT-OFF PLAN
- SHUT OFF GV [1] TO MAKE NON-PRES-SURE CONNECTION OF 8" WL IN 82nd ST. APPROX. 200' SOUTH OF SUNSET RD.
  - SHUT OFF GV [2] AND [3] TO MAKE NON-PRESSURE CONNECTION OF SERVICE LINES TO 8" WL IN 82nd ST.
  - SHUT OFF GV [2] TO MAKE NON-PRES-SURE CONNECTION ON 82nd ST. AT BRIDGE BLVD AND MAKE A PRESSURE CONNECTION FROM 8" WL TO EXISTING 12" WL AT 86th ST AND BRIDGE BLVD INTERSECTION USING A TAPPING SLEEVE.
  - CONTRACTOR SHALL CONTACT WATER SYSTEMS DIVISION (857-8200) FIVE (5) WORKING DAYS PRIOR TO VALVE SHUT OFF ONLY WATER DEPARTMENT PERSONNEL ARE AUTHORIZED TO OPERATE VALVES.

SCALE:  
HORIZ: 1" = 50'  
VERT: 1" = 10'

community sciences corporation  
LAND PLANNING P.O. Box 1328 CORRALES, N.M. 87004

CITY OF ALBUQUERQUE  
PUBLIC WORKS DEPARTMENT  
ENGINEERING GROUP

TITLE: BRIDGE BOULEVARD AND 82ND STREET IMPROVEMENTS  
UTILITY PLAN & PROFILE  
82ND ST. S.W.

| APPROVALS      | ENGINEER | DATE    | APPROVALS    | ENGINEER  | DATE   |
|----------------|----------|---------|--------------|-----------|--------|
| DRC CHAIRMAN   | 24.5.96  | 4-9-96  | WATER        | R.W. Kane | 2-2-96 |
| TRANSPORTATION | 3-1-96   | 3-1-96  | WASTE WATER  |           |        |
| HYDROLOGY      | 3-13-96  | 3-13-96 | A.M.A.F.C.A. |           |        |

PROJECT NO. 5226.90  
MAP NO. L-10  
SHEET 8 OF 10

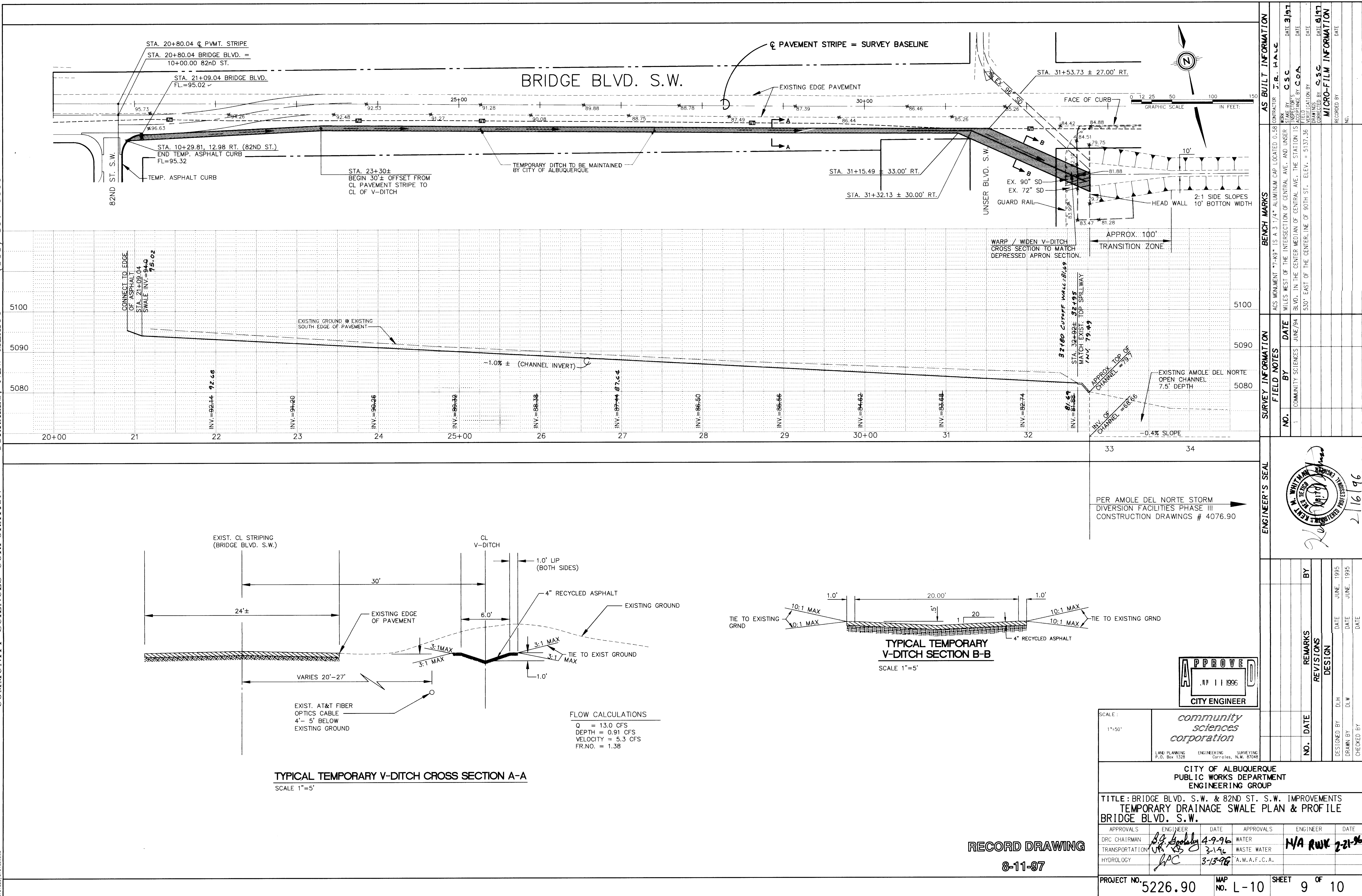
FOR INFORMATION ONLY EXCEPT FOR DETAIL BOXES A AND B  
SEE PROJECT # 5048.90

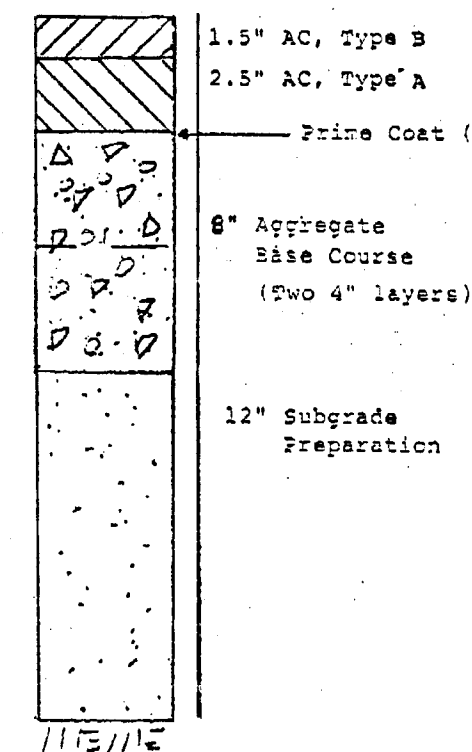
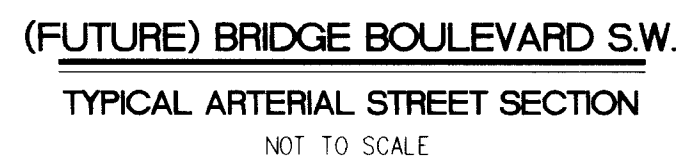
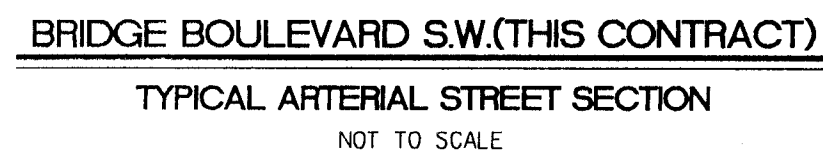
RECORD DRAWING  
8-11-97

SCANNED BY  
BY LASON

26-51216-90 0897



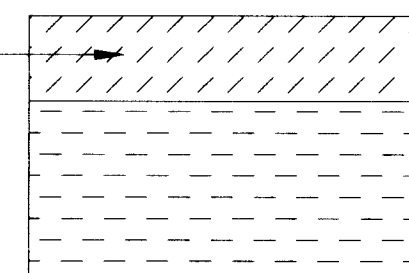




9. THE ARTERIAL PAVEMENT SECTION SHOWN HEREON IS NOT TO BE CONSTRUCTED PER THIS PLAN SET. ACTUAL CONSTRUCTION WILL BE PER COA PROJECT NO. 4073 OR ITS REPLACEMENT. THE SECTION SHOWN HEREON IS FOR FINANCIAL GUARANTY PURPOSES ONLY UNTIL SUCH TIME THE COA BEGINS SAID CONSTRUCTION.
10. WHERE THE EXISTING ASPHALT CONCRETE PAVEMENT IN BRIDGE BOULEVARD IS REMOVED OR DAMAGED DUE TO CONSTRUCTION OF THE SANITARY SEWER SYSTEM, THEN REPLACEMENT SHALL CONSIST OF LIKE PAVEMENT MATERIALS.

- NOTES:
1. ALL MATERIALS, PROPERTIES, AND PLACEMENT SHALL CONFORM TO THE REQUIREMENTS OF THE CITY OF ALBUQUERQUE'S (COA) "STANDARD SPECIFICATIONS (SS), LATEST PUBLISHED EDITION.
  2. PLACEMENT OF THE UPPER (1.5") LAYER OF ASPHALT CONCRETE COURSE SHALL BE AFTER ALL MANHOLE, VALVE BOXES/RINGS HAVE BEEN SET TO GRADE.
  3. THE CONTRACTOR SHALL SUPPLY A COPY OF MIX DESIGN(S) TO THE DESIGN ENGINEER FOR REVIEW AT LEAST ONE (1) WEEK PRIOR TO BEGINNING PAVEMENT WORK.
  4. THE CONTRACTOR SHALL ARRANGE FOR A COPY OF EACH DELIVERY TICKET TO BE DELIVERED TO THE PROJECT INSPECTOR AT THE TIME OF DELIVERY FOR ALL PAVEMENT MATERIALS. SAID DELIVERY TICKETS SHALL CONTAIN ALL INFORMATION REQUIRED BY THE COA-SS.
  5. THE AGGREGATE BASE COURSE (ABC) MATERIAL SHALL BE PLACED IN TWO (2) LAYERS OF FOUR (4) INCHES EACH LAYER. A FULL EIGHT (8) INCH SECTION SHALL BE MAINTAINED BENEATH BOTH THE CURB AND GUTTER SECTION AND THE ASPHALT CONCRETE. ADDITIONAL THICKNESS OF ABC WILL BE REQUIRED BETWEEN THE PROJECTED FACE OF GUTTER AND WHERE A REASONABLE TRANSITION TO THE CROSS SLOPE OF THE FINISH STREET GRADE CAN BE MADE.
  6. THERE SHALL BE NO SURFACE DISTURBANCE OF THE AGGREGATE BASE COURSE (ABC) MATERIAL ONCE THE UPPER LAYER IS PLACED, I.E., NO CUTTING FOR CURB AND GUTTER OR PLACEMENT OF THIN LAYERS TO FILL OUT TAPERS.
  7. A PRIME COAT OF CSS-1H, APPLIED AT THE RATE OF 0.10 GALLONS PER SQUARE YARD SHALL BE PLACED ON TOP OF THE ABC MATERIAL IMMEDIATELY AFTER FINISH PLACEMENT/COMPACTION OF THE UPPER LAYER OF THE ABC.
  8. A TAPERED SECTION OF ASPHALT CONCRETE SHALL BE PLACED NEXT TO THE CURB AND GUTTER SECTION PRIOR TO PLACING THE BASE LAYER OF ASPHALT CONCRETE. THIS TAPER SHALL EXTEND FROM THE FACE OF GUTTER OUTWARD OVER THREE (3) HORIZONTAL FEET.

## N.T.S.



6" SUBGRADE SOIL. R-VALUE >50.  
95% MIN. COMPACTION, AT OPT.  
MOISTURE +/- 2.0%, ASTM D1557,  
OR OPT. MOISTURE, TO +4%, ASTM  
D698 FOR SOIL W/35% OR MORE  
MATERIAL PASSING THE NO. 200  
SIEVE.

N.T.S.



N.T.S.

Per CDA STD DWG 2405

8-11-97

SCANNED BY  
BY LASON

|   |   |   |   |   |   |   |   |   |    |    |    |    |    |    |    |
|---|---|---|---|---|---|---|---|---|----|----|----|----|----|----|----|
| 1 | 2 | 3 | 4 | 5 | 6 | 7 | 8 | 9 | 10 | 11 | 12 | 13 | 14 | 15 | 16 |
| 2 | 6 | - | 5 | 2 | 2 | 6 | . | 9 | 0  |    |    | 1  | 0  | 9  | 7  |