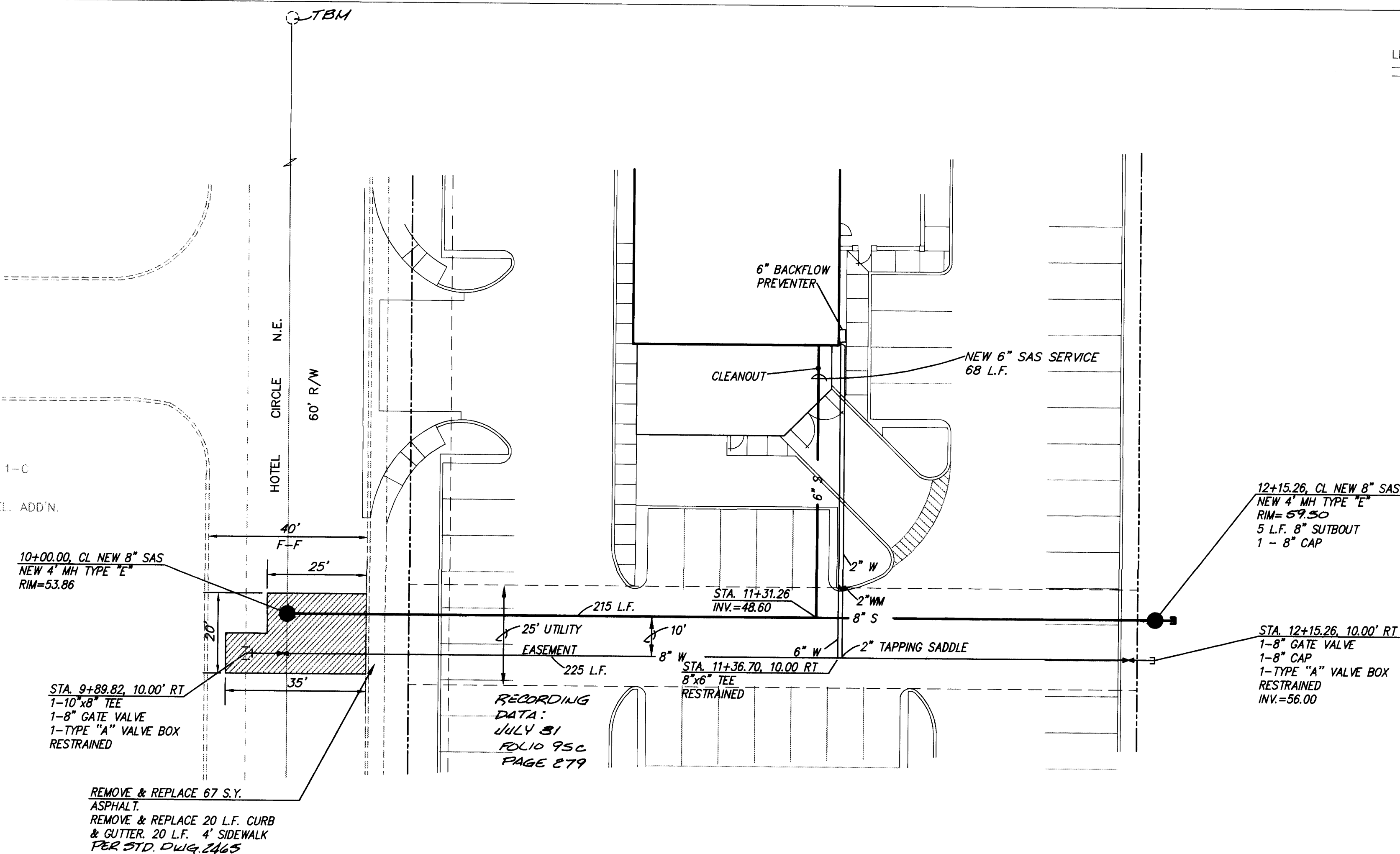


TRACTS 1-C
HORNE DEVEL. ADD'N.



LEGEND

- PROPERTY LINE
- EXISTING CONTOUR
- EXISTING WATER VALVE
- EXISTING WATER METER & WATER LINE
- EXISTING TRAFFIC SIGNAL BOX
- EXISTING LIGHT POLE
- EXISTING SANITARY SEWER LINE & MANHOLE

LENGTH OF RESTRAINED PIPE (FEET)						
PIPE SIZE	90	45	22.5	11.25	TEE	VALVE
6"	18'	7'	4'	2'	*	55'
8"	18'	8'	4'	2'	*	59'
10"	27'	11'	5'	3'	*	83'

LENGTH OF RESTRAINED PIPE ON EACH SIDE OF THE BEND.
RESTRAIN BRANCH AT FITTING ONLY. MINIMUM ATTACHED
PIPE LENGTH, RUN SIDE OF TEE: 10.00 FEET.

RECORD DRAWING

I hereby certify that the information contained on this drawing has been revised in accordance with information furnished by the Contractor, TLC Plumbing, and by the Surveyor, ALS, Inc., and reflects the construction as actually accomplished. This plan as constructed is in substantial compliance with the Approved Plan.

Mark Goodwin, NMPE 8948

STA. 9+89.82 TO STA. 12+15.26
SCALE: HORIZ. 1"=20'
VERT. 1"=5'

GENERAL NOTES

NOTICE TO CONTRACTORS

- CITY OF ALBUQUERQUE SPECIFICATIONS FOR PUBLIC WORKS CONSTRUCTION, 1986 EDITION AS AMENDED THROUGH UPDATE 6, WILL BE REFERRED TO HEREIN AS THE "STANDARD SPECIFICATIONS".
- TWO WORKING DAYS PRIOR TO ANY EXCAVATION, CONTRACTOR MUST CONTACT NEW MEXICO ONE CALL SYSTEM (260-1990) AND DETERMINE LOCATION OF EXISTING UTILITIES.
- PRIOR TO ANY CONSTRUCTION, THE CONTRACTOR SHALL EXCAVATE AND VERIFY THE HORIZONTAL AND VERTICAL LOCATIONS OF ALL OBSTRUCTIONS. SHOULD A CONFLICT EXIST, THE CONTRACTOR SHALL NOTIFY THE ENGINEER OR THE SURVEYOR SO THAT THE CONFLICT CAN BE RESOLVED WITHOUT DELAY.
- ALL EXISTING SIGNS, MARKERS, DELINEATORS, ETC., WITHIN THE CONSTRUCTION LIMITS SHALL BE REMOVED, STORED AND RE-SET BY THE CONTRACTOR.
- THE CONTRACTOR SHALL NOTIFY THE ENGINEER NOT LESS THAN SEVEN (7) PRIOR TO STARTING WORK IN ORDER THAT THE ENGINEER MAY TAKE NECESSARY MEASURES TO INSURE THE PRESERVATION OF SURVEY MONUMENTS. CONTRACTOR SHALL NOT DISTURB PERMANENT SURVEY MONUMENTS WITHOUT THE CONSENT OF THE ENGINEER AND SHALL NOTIFY THE ENGINEER AND BEAR THE EXPENSE OF REPLACING ANY THAT MAY BE DISTURBED WITHOUT PERMISSION. REPLACEMENT SHALL BE DONE ONLY BY THE CITY SURVEYOR. WHEN A CHANGE IS MADE IN THE FINISHED ELEVATIONS OF THE PAVEMENT OF ANY ROADWAY IN WHICH A PERMANENT SURVEY MONUMENT IS LOCATED, CONTRACTOR SHALL, AT HIS OWN EXPENSE, ADJUST THE MONUMENT COVER TO THE NEW GRADE UNLESS OTHERWISE SPECIFIED. REFER TO SECTION 4.4 OF THE GENERAL CONDITIONS OF THE STANDARD SPECIFICATIONS.
- THREE (3) WORKING DAYS PRIOR TO BEGINNING CONSTRUCTION THE CONTRACTOR SHALL SUBMIT TO THE CONSTRUCTION CO-ORDINATION DIVISION A DETAILED CONSTRUCTION SCHEDULE. TWO (2) WORKING DAYS PRIOR TO CONSTRUCTION THE CONTRACTOR SHALL OBTAIN A BARRICADING PERMIT FROM THE CONSTRUCTION CO-ORDINATION DIVISION. CONTRACTOR SHALL NOTIFY BARRICADE ENGINEER (768-2551) PRIOR TO OCCUPYING AN INTERSECTION.
- ALL STREET STRIPING ALTERED OR DESTROYED SHALL BE REPLACED IN KIND BY CONTRACTOR TO LOCATION AND IN KIND AS EXISTING OR AS INDICATED BY THIS PLAN SET.
- ANY WORK OCCURRING WITHIN AN ARTERIAL ROADWAY REQUIRES TWENTY-FOUR HOUR CONSTRUCTION.

THE FOLLOWING NOTES ALSO APPLY WHEN CHECKED

- ☐ ALL UTILITIES AND UTILITY SERVICE LINES SHALL BE INSTALLED PRIOR TO PAVING.
- ☐ BACKFILL COMPACTION SHALL BE ACCORDING TO SPECIFIED STREET USE.
- ☐ TACK COAT REQUIREMENTS SHALL BE DETERMINED BY THE CITY ENGINEER.
- ☐ SIDEWALK AND WHEELCHAIR RAMPS WITHIN THE CURB RETURNS SHALL BE CONSTRUCTED WHEREVER A NEW CURB RETURN IS CONSTRUCTED.
- ☐ IF CURB IS DEPRESSED FOR A DRIVEPAD, THE DRIVEPAD SHALL BE CONSTRUCTED PRIOR TO ACCEPTANCE OF CURB AND GUTTER.
- ☐ ALL STORM DRAINAGE FACILITIES SHALL BE COMPLETED PRIOR TO FINAL ACCEPTANCE.
- ☐ THE REQUESTOR OR DEVELOPER SHALL BE RESPONSIBLE FOR REPAIR OR REPLACEMENT OF ALL CURB AND GUTTER OR SIDEWALK DAMAGE AFTER APPROVAL BY THE CITY ENGINEER OR WORK COMPLETED BY THE CONTRACTOR.

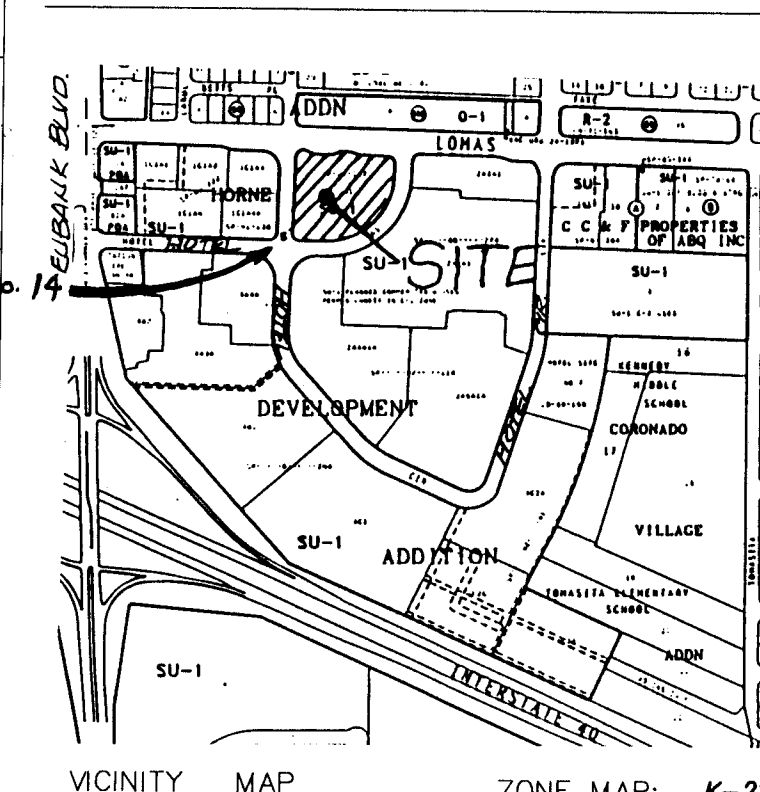
CAUTION:
NOTE THAT ALL EXISTING UTILITIES MAY NOT BE SHOWN. ALL EXISTING SERVICE CONNECTIONS ARE NOT SHOWN. ANY EXISTING UTILITIES THAT ARE SHOWN ARE APPROXIMATE LOCATION ONLY. IT SHALL BE THE SOLE RESPONSIBILITY OF THE CONTRACTOR TO CONTACT ALL THE UTILITY OWNERS AND TO CONDUCT ALL NECESSARY FIELD INVESTIGATIONS PRIOR TO ANY EXCAVATIONS TO DETERMINE THE ACTUAL LOCATION OF UTILITIES AND OTHER IMPROVEMENTS.

TEMPORARY BENCHMARK

RIM OF EXISTING SAS MANHOLE IN HOTEL CIRCLE
EL. = 5452.25

VALVE SHUT-OFF PLAN

- TO CONNECT NEW 8" WATERLINE IN HOTEL CIR. TO EXISTING 10" VALVE NO. 14 WILL NEED TO BE CLOSED.
- CONTRACTOR WILL CONTACT WATER SYSTEMS AT 857-8200 3 DAYS PRIOR TO NECESSARY SHUT-OFF.
- VALVES SHALL ONLY BE OPERATED BY CITY WATER EMPLOYEES.



APPROVED FOR
CONSTRUCTION
CITY ENGINEER
DATE

D. MARK GOODWIN & ASSOCIATES, P.A.
CONSULTING ENGINEERS & SURVEYORS
P.O. BOX 90606
ALBUQUERQUE, NEW MEXICO 87199
(505) 828-2200

CITY OF ALBUQUERQUE
PUBLIC WORKS DEPARTMENT
ENGINEERING GROUP

TITLE: APPLEBEE'S - LOMAS
WATER & SEWER, PLAN & PROFILE
STA. 9+89.82 TO STA. 12+15.26

APPROVALS	ENGINEER	DATE	APPROVALS	ENGINEER	DATE
DRC CHAIRMAN	R.W. Kane	8-10-95	WATER	R.W. Kane	7-20-95
TRANSPORTATION	R.W. Kane	7-20-95	WASTE WATER	R.W. Kane	7-20-95
HYDROLOGY	JAC	7-29-95			

PROJECT NO. 5248.90
MAP NO. K21
SHEET 1 OF 1

SCANNED BY
BY LASON