

CITY OF ALBUQUERQUE, NEW MEXICO
CONSTRUCTION PLANS
SEP PROJECT AT
PINO MAINTENANCE YARD
CITY PROJECT No. 528002

**5501 Pino Avenue N.E.
Albuquerque, New Mexico 87109
SEPTEMBER 12, 2014**



GENERAL NOTES

1. ALL WORK DETAILED ON THESE PLANS TO BE PERFORMED UNDER CONTRACT SHALL, EXCEPT AS OTHERWISE STATED OR PROVIDED FOR HEREON, BE CONSTRUCTED IN ACCORDANCE WITH THE CITY OF ALBUQUERQUE STANDARD SPECIFICATIONS FOR PUBLIC WORKS CONSTRUCTION 1986 EDITION AS AMENDED WITH UPDATE NO. 8.
2. PRIOR TO CONSTRUCTION, THE CONTRACTOR SHALL EXCAVATE AND VERIFY THE HORIZONTAL AND VERTICAL LOCATIONS OF ALL OBSTRUCTIONS. SHOULD A CONFLICT EXIST, THE CONTRACTOR SHALL NOTIFY THE ENGINEER SO THAT THE CONFLICT CAN BE RESOLVED WITH MINIMUM DELAY.
3. TWO (2) WORKING DAYS PRIOR TO ANY EXCAVATION, CONTRACTOR MUST CONTACT NEW MEXICO ONE CALL SYSTEM, INC. @ 260-1990 FOR LOCATION OF EXISTING UTILITIES.
4. TRAFFIC CONTROL: SEVEN (7) WORKING DAYS PRIOR TO BEGINNING CONSTRUCTION THE CONTRACTOR SHALL SUBMIT TO THE CONSTRUCTION COORDINATION DIVISION A DETAILED CONSTRUCTION SCHEDULE. TWO (2) WORKING DAYS PRIOR TO CONSTRUCTION, THE CONTRACTOR SHALL OBTAIN A BARRICADING PERMIT FROM THE CONSTRUCTION COORDINATION DIVISION. THE CONTRACTOR SHALL NOTIFY THE BARRICADING ENGINEER (924-3400) PRIOR TO OCCUPYING AN INTERSECTION. SEE SECTION 19 FOR THE SPECIFICATIONS.
5. ALL PAVEMENT STRIPING ALTERED OR DESTROYED SHALL BE REPLACED WITH PAINTED REFLECTORIZED PAVEMENT MARKINGS BY THE CONTRACTOR TO THE SAME LOCATION AS WAS EXISTING, OR AS SHOWN ON THESE PLANS.
6. THE CONTRACTOR SHALL PROMPTLY CLEAN UP ANY MATERIAL EXCAVATED WITH THE PUBLIC RIGHT-OF-WAY OR PRIVATE ROADWAY EASEMENTS SO THAT THE EXCAVATED MATERIAL IS NOT SUSCEPTIBLE TO BEING WASHED DOWN THE STREET OR INTO ANY PUBLIC DRAINAGE FACILITY.
7. THE CONTRACTOR SHALL RECORD DATA ON ALL UTILITY LINES AND ACCESSORIES AS REQUIRED BY THE CITY OF ALBUQUERQUE FOR THE PREPARATION OF "AS CONSTRUCTED" DRAWINGS. THE CONTRACTOR SHALL NOT COVER UTILITY LINES AND ACCESSORIES UNTIL ALL DATA HAS BEEN RECORDED.
8. THE CONTRACTOR SHALL NOTIFY ALL AFFECTED UTILITY COMPANIES OF ANY ADJUSTMENT OR RELOCATION OF EXISTING UTILITIES REQUIRED DUE TO THE CONSTRUCTION OPERATIONS THE CONTRACTOR MAY BE REQUIRED TO RESCHEDULE HIS ACTIVITIES TO ALLOW UTILITY CREWS TO PERFORM THEIR WORK. NO ADDITIONAL COSTS WILL BE ALLOWED FOR DELAYS OR INCONVENIENCES CAUSED BY UTILITY COMPANY CREWS.
9. EXISTING UTILITY LINE LOCATIONS ARE SHOWN IN AN APPROXIMATE MANNER ONLY, AND SUCH LINES MAY EXIST WHERE NONE ARE SHOWN. THE LOCATION OF ANY SUCH EXISTING LINE IS BASED UPON INFORMATION PROVIDED BY THE UTILITY COMPANY, THE OWNER, OR BY OTHERS AND THE INFORMATION MAY BE INCOMPLETE OR MAY BE OBSOLETE BY THE TIME CONSTRUCTION COMMENCES.
11. THE CONTRACTOR SHALL CONFINE HIS WORK AS SHOWN ON THE ATTACHED PLANS. OVERNIGHT PARKING OF THE CONTRACTOR'S EQUIPMENT SHALL NOT OBSTRUCT ACCESS ROADS, TRAFFIC LANES OR PEDESTRIAN PATHWAYS.
12. THE CONTRACTOR SHALL MAINTAIN A GRAFFITI-FREE WORK SITE. THE CONTRACTOR SHALL PROMPTLY REMOVE ANY AND ALL GRAFFITI FROM EQUIPMENT, WHETHER PERMANENT OR TEMPORARY.
13. ALL BORROW AND SURFACING MATERIALS SHALL BE OBTAINED FROM CITY APPROVED COMMERCIAL SOURCES.
14. AN EXCAVATION/CONSTRUCTION PERMIT MAY BE REQUIRED BEFORE BEGINNING ANY WORK WITHIN THE CITY RIGHT-OF-WAY.
15. CONTRACTOR SHALL COORDINATE WITH THE WATER AUTHORITY SEVEN (7) DAYS IN ADVANCE OF PERFORMING WORK THAT WILL AFFECT THE PUBLIC WATER OR SANITARY SEWER INFRASTRUCTURE. WORK REQUIRING SHUTOFF OF FACILITIES DESIGNATED AS MASTER PLAN FACILITIES MUST BE COORDINATED WITH THE WATER AUTHORITY 14 DAYS IN ADVANCE OF PERFORMING SUCH WORK. ONLY WATER AUTHORITY CREWS ARE AUTHORIZED TO OPERATE PUBLIC VALVES. SHUTOFF REQUESTS MUST BE MADE ONLINE AT [HTTP://ABCWUA.ORG/CONTACT/VIEW/463729/](http://abcwua.org/contact/view/463729/).
16. AT HIS OWN EXPENSE, CONTRACTOR SHALL ASSUME RESPONSIBILITY FOR ANY DAMAGE TO EXISTING PAVEMENT, PAVEMENT MARKINGS, CURB AND GUTTER, HANDICAP RAMPS, AND SIDEWALK DURING CONSTRUCTION APART FROM THOSE SECTIONS INDICATED FOR REMOVAL ON THE PLANS AND SHALL REPAIR OR REPLACE, PER STANDARD SPECIFICATIONS.
17. REMOVALS SHALL BE DISPOSED OF OFF-SITE AND SHALL BE THE RESPONSIBILITY OF THE CONTRACTOR.
18. CONTRACTOR SHALL DISPOSE OF ALL UNSUITABLE MATERIAL IN AN ENVIRONMENTALLY ACCEPTABLE MANNER AT A LOCATION ACCEPTABLE TO THE PROJECT MANAGER. THERE WILL BE NO DIRECT COMPENSATION FOR THIS WORK.
19. ALL EXCAVATION, TRENCHING AND SHORING ACTIVITIES MUST BE CARRIED OUT IN ACCORDANCE WITH OSHA 29 CFR 1926.650 SUBPART P.

UTILITY COMPANIES

NEW MEXICO GAS COMPANY (GAS SERVICES & GAS LINES)
CONTACT: EARL HOSKINS, 697-3140

PUBLIC SERVICE COMPANY OF NM (ELECTRICAL SERVICES & ELECTRIC LINES)
CONTACT: ROLAND BLAUWKAMP, 241-3581
CONTACT: MIKE ADAMS, 241-3316

CenturyLink (TELEPHONE SERVICES)
CONTACT: RITA JARAMILLO, 245-8706

AT&T (TELEPHONE SERVICES)
CONTACT: DAVID CROWEL, 842-2911

VERIZON-BROOKS FIBER COMM. (TELEPHONE SERVICES)
CONTACT: ANDY DARNELL, 346-4470

COMCAST (CABLE TELEVISION)
CONTACT: MIKE MORTUS, 761-6235

TIME WARNER TELECOM (CABLE TELEVISION)
CONTACT: ROYAL HARRISON, 938-7339

ALBUQUERQUE BERNALILLO COUNTY WATER UTILITY AUTHORITY
CONTACT: JON ERTSGAARD, 768-2598

McLEOD USA
CONTACT: RICK MUELLER, 244-3161

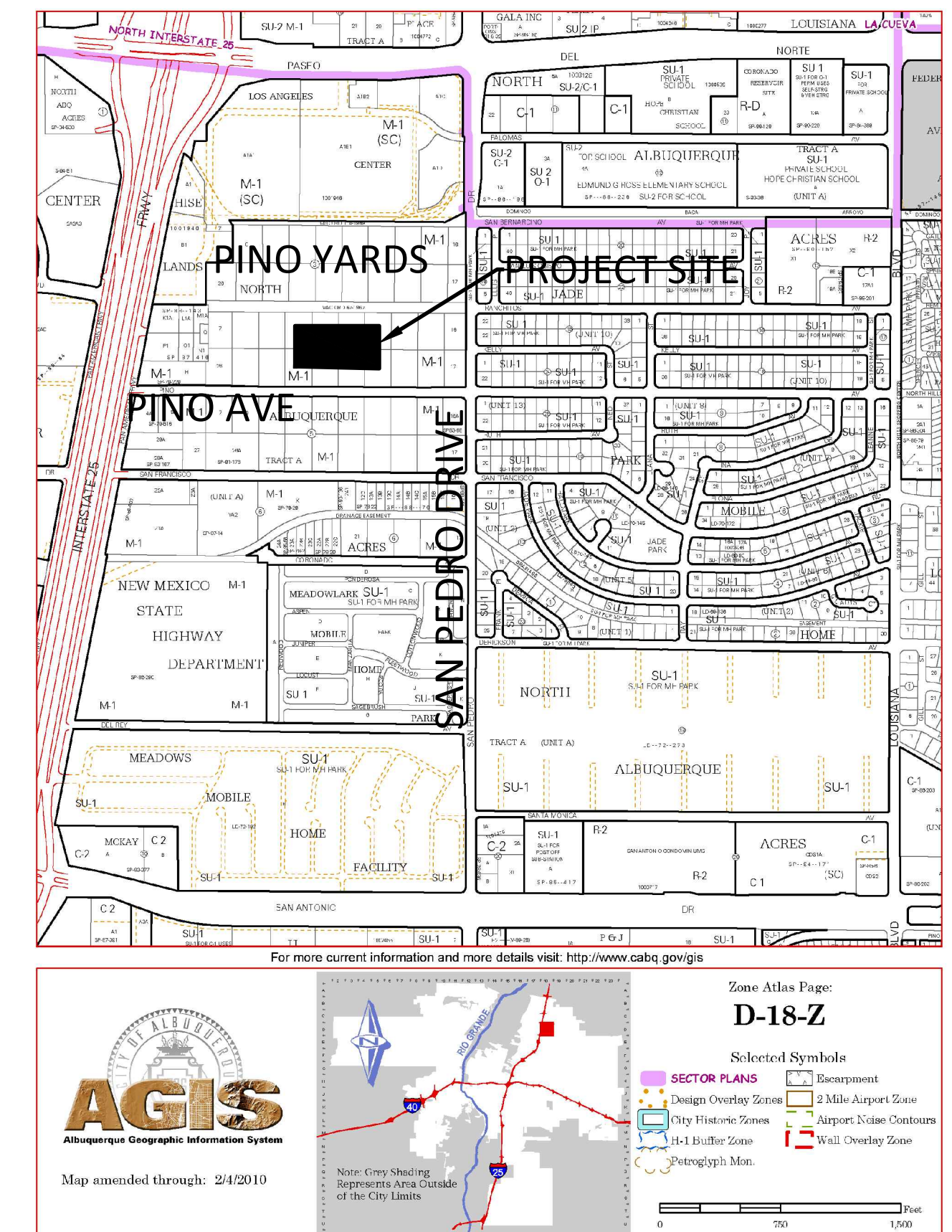
BCG ASSETS
CONTACT: JOHN BROWN, 877-500-3427

TRAFFIC NOTES

1. THE CONTRACTOR SHALL MAINTAIN ONE LANE OPEN ON THE NORTH ACCESS ROAD AT ALL TIMES.
2. THE CONTRACTOR SHALL PROVIDE PEDESTRIAN CIRCULATION THROUGH OR AROUND THE WORK SITE AT ALL TIMES.
3. THE CONTRACTOR SHALL ACCOMPLISH AS MUCH WORK AS POSSIBLE PRIOR TO STARTING CONSTRUCTION OPERATIONS THAT WILL AFFECT TRAFFIC. THE CONTRACTOR SHALL PROVIDE A LISTING OF SUCH WORK TO THE CITY PROJECT MANAGER AND ENGINEER FOR APPROVAL PRIOR TO STARTING CONSTRUCTION OPERATIONS.
4. CONTRACTOR SHALL BE RESPONSIBLE FOR PROVIDING AND MAINTAINING ALL TRAFFIC AND CONSTRUCTION SIGNAGE UNTIL THE PROJECT HAS BEEN ACCEPTED BY THE CITY OF ALBUQUERQUE.

RECORD DRAWINGS

I, SCOTT A. EDDINGS, REGISTERED IN NEW MEXICO AS A PROFESSIONAL ENGINEER NO. 12856, HERBY CERTIFY THAT THIS PROJECT WAS BUILT IN SUBSTANTIAL COMPLIANCE WITH THESE PLANS.
DATE DECEMBER 26, 2014.



VICINITY MAP

ZONE ATLAS MAP D-18-Z

SHEET INDEX

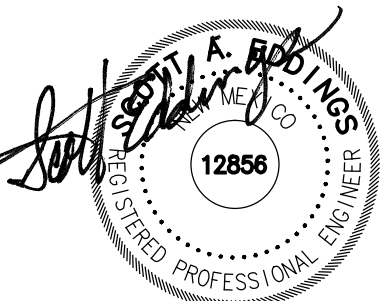
SHT #	SHEET TITLE
1	TITLE SHEET
2	DEMOLITION PLAN
3	DRAINAGE PLAN
4	PAVING AND MARKING PLAN
5	PERMEABLE ASPHALT SECTION AND DETAILS
6	PERMEABLE PAVER SECTION AND DETAILS
7	WORK ZONE EXHIBIT

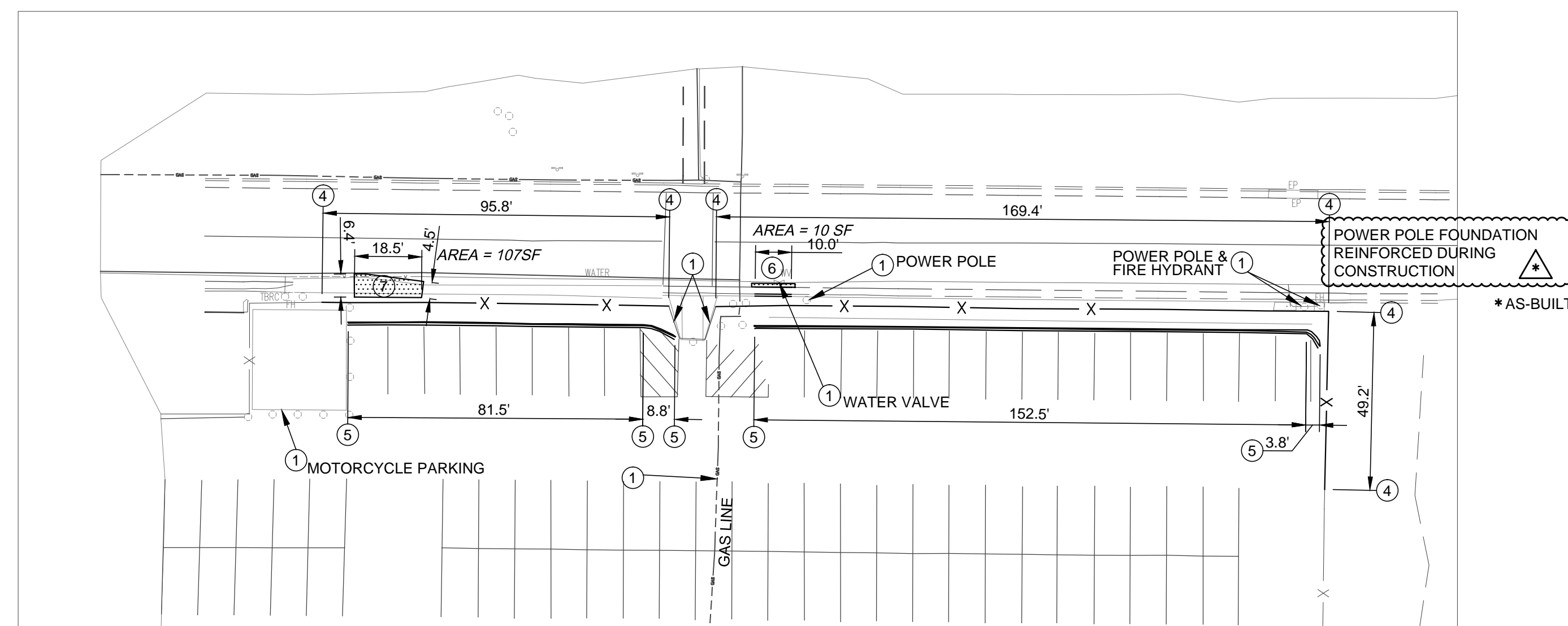
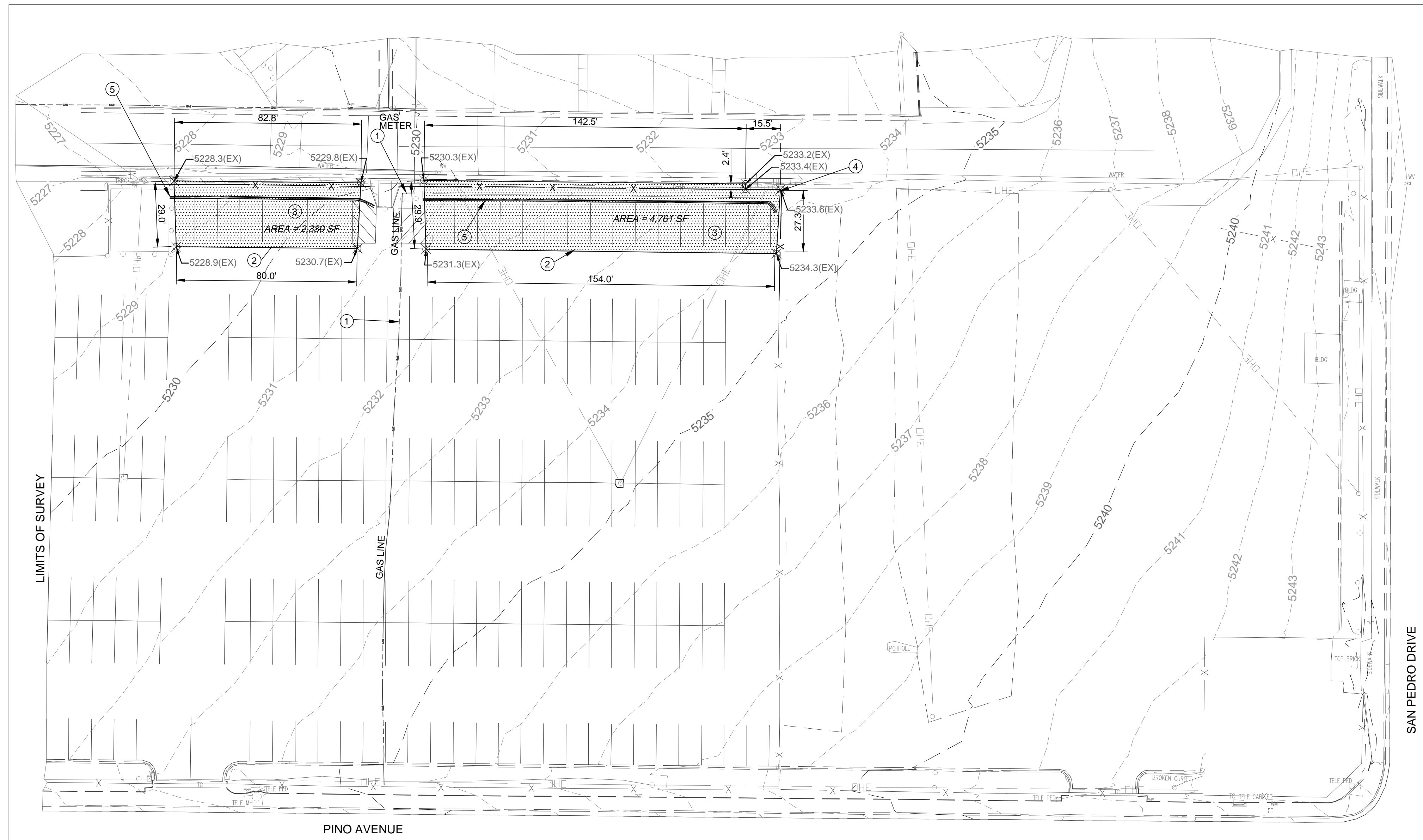
Designed By:

HUITT-ZOLLARS





Huitt-Zollars, Inc. Albuquerque
6501 Americas Parkway, Suite 550
Albuquerque, New Mexico 87110
Phone (505) 883-8114 Fax (505) 883-5022

CITY OF ALBUQUERQUE
DEPARTMENT OF MUNICIPAL DEVELOPMENT

REV.	SHEETS	CITY ENGINEER	DATE	USER DEPARTMENT		DATE	USER DEPARTMENT		DATE
ENGINEERS STAMP & SIGNATURE			APPROVALS		ENGINEER	DATE	*****		
 <i>Scott A. Boes</i> 9/12/14			DRC Chairman				APPROVED FOR CONSTRUCTION		
			Transportation		NA	-			
			Water/Wastewater		-	-			
			Hydrology		-	-			
			C.I.P.		-	-			
			Constr. Mngmt.		-	-			
			Constr. Coord.		-	-	City Engineer _____ Date _____		
AEHD		-	-						
City Project No. 528002						Sheet _____ Of _____ 1 7			



EXISTING FEATURE LEGEND

EXISTING CONTOUR	— — — — — 5228 — — — — —
EXISTING SPOT ELEVATION	× 5228.3 (EX)
EXISTING FIRE HYDRANT	⊗
EXISTING WATER VALVE	⊗ WV
EXISTING MANHOLE	○
EXISTING LIGHT	★
EXISTING ELECTRICAL EQUIPMENT	□
EXISTING OVERHEAD ELECTRIC	— — — — —  — — — — —
EXISTING GAS LINE	— — — — —  — — — — —
EXISTING FENCE AND GATE	— — — — — X — — — — —
EXISTING BOLLARD	◦
EXISTING POWER POLE	
EXISTING CONCRETE CURB AND GUTTER	≡ ≡ ≡ ≡ ≡
EXISTING ASPHALT ROLL CURB	

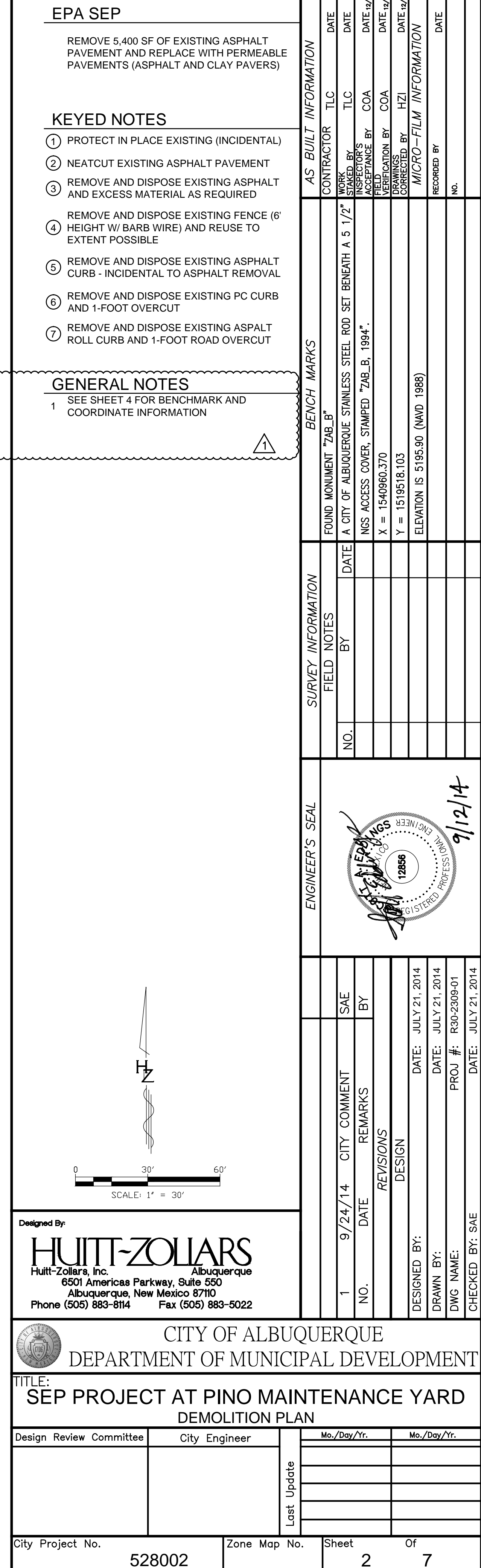
DEMOLITION LEGEND

ASPHALT CURB

CONCRETE CURB
AND GUTTER

ASPHALT PARKING

ASPHALT ROLL CURB
AND ROAD



REMOVE 5,400 SF OF EXISTING ASPHALT
PAVEMENT AND REPLACE WITH PERMEABLE
PAVEMENTS (ASPHALT AND CLAY PAVERS)

KEYED NOTES

- ① PROTECT IN PLACE EXISTING (INCIDENTAL)
- ② NEATCUT EXISTING ASPHALT PAVEMENT
- ③ REMOVE AND DISPOSE EXISTING ASPHALT AND EXCESS MATERIAL AS REQUIRED
- ④ REMOVE AND DISPOSE EXISTING FENCE (6' HEIGHT W/ BARB WIRE) AND REUSE TO EXTENT POSSIBLE
- ⑤ REMOVE AND DISPOSE EXISTING ASPHALT CURB - INCIDENTAL TO ASPHALT REMOVAL
- ⑥ REMOVE AND DISPOSE EXISTING PC CURB AND 1-FOOT OVERCUT
- ⑦ REMOVE AND DISPOSE EXISTING ASPALT ROLL CURB AND 1-FOOT ROAD OVERCUT

GENERAL NOTES

- 1 SEE SHEET 4 FOR BENCHMARK AND
COORDINATE INFORMATION

QUERQUE									
MIPAL DEVELOPMENT									
MAINTENANCE YARD									
PLAN									
Last Update	Mo./Day/Yr.				Mo./Day/Yr.				
No.	Sheet				Of				
	2				7				

Plotted: 12/26/2014 7:50:19 AM, By:Eddings, Scott
 H:\proj\R302309.01 Pino Yards\CAD\Sheets\100% SUBMITTAL\2_DEMO PLAN.dwg
 Last Saved:12/26/2014 7:49:42 AM, seedings

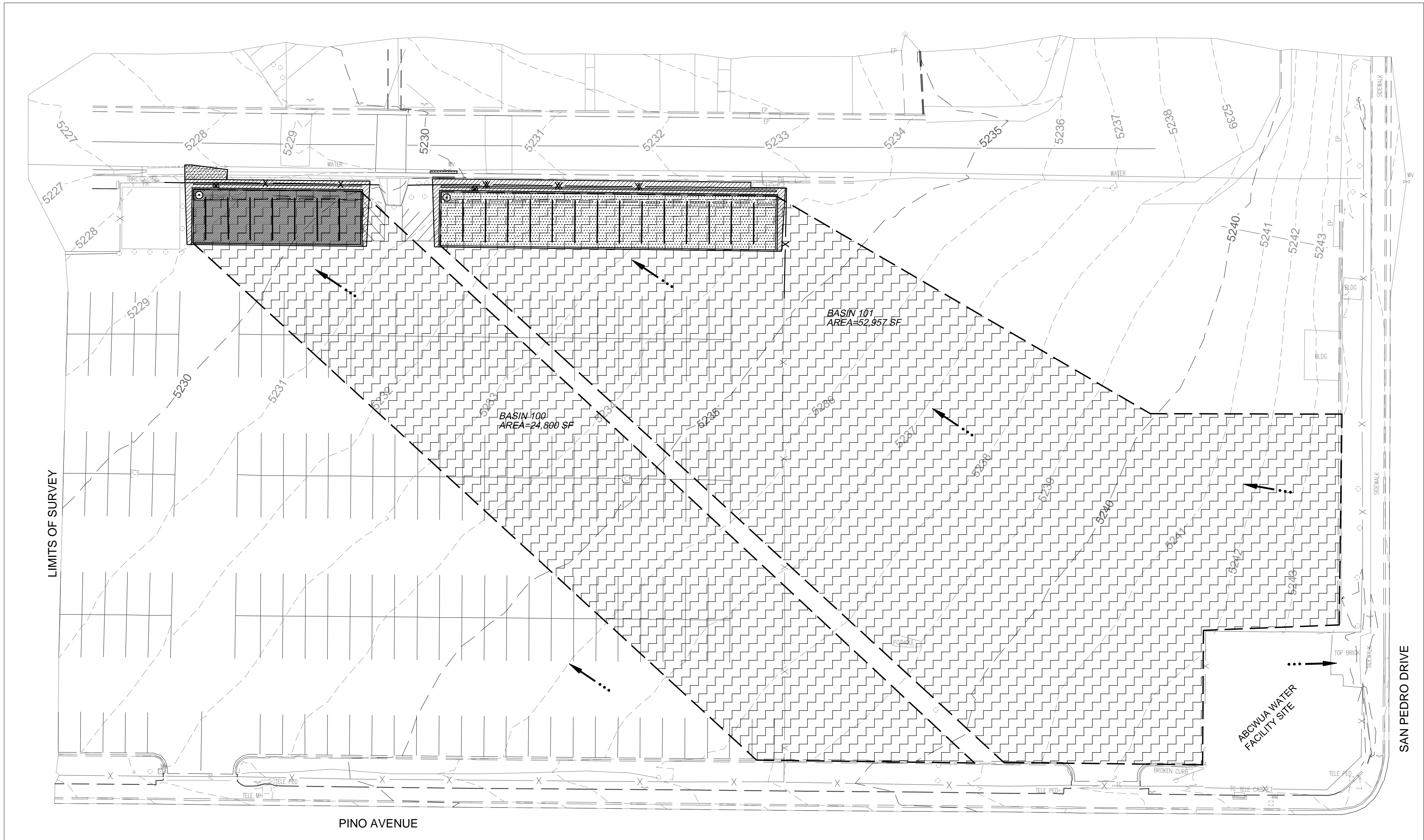
Plotted: 12/26/2014 7:50:19 AM, By: Eddings, S
H:\proj\R302309.01 Pino Yards\CAD\Sheets\10
Last Saved: 12/26/2014 7:49:42 AM, seedings

Plotted: 12/26/2014 7:50:19 AM, By: Eddings, S
H:\proj\R302309.01 Pino Yards\CAD\Sheets\10
Last Saved: 12/26/2014 7:49:42 AM, seedings

RECORD DRAWINGS

I, SCOTT A. EDDINGS, REGISTERED IN NEW MEXICO AS A PROFESSIONAL ENGINEER NO. 12856, HERBY CERTIFY THAT THIS PROJECT WAS BUILT IN SUBSTANTIAL COMPLIANCE WITH THESE PLANS.
DATE DECEMBER 26, 2014.

Plotted: 12/26/2014 7:51:17 AM By: Eddings, Scott
H:\proj\R302309.01 Pino Yards\CAD\Sheets\100% SUBMITTAL\3. DRAINAGE PLAN.dwg
Last Saved: 12/26/2014 7:51:06 AM, eaddings

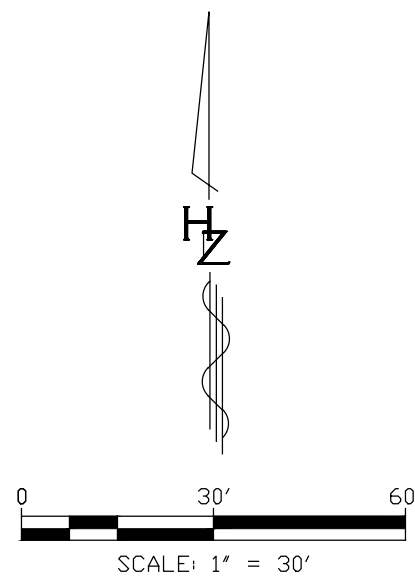
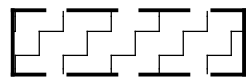


DRAINAGE MAP

GENERAL LEGEND

FLOW DIRECTION ARROW

DRAINAGE BASIN



DRAINAGE AREA BASIN 100		24,800 sf
AREA =		0.57 ac.
FIRST FLUSH		= 0.44 in.
V (first flush)	(0.44) x (0.57)	12.0 = 0.020875 ac-ft = 909 cf

BASIN 100

DRAINAGE AREA BASIN 101		52,957 sf
AREA =		1.22 ac.
FIRST FLUSH		= 0.44 in.
V (first flush)	(0.44) x (1.22)	12.0 = 0.044577 ac-ft = 1942 cf


BASIN 101

RECORD DRAWINGS

I, **SCOTT A. EDDINGS**, REGISTERED IN NEW MEXICO AS A PROFESSIONAL ENGINEER NO. **12888**, HERBY CERTIFY THAT THIS PROJECT WAS BUILT IN SUBSTANTIAL COMPLIANCE WITH THESE PLANS.
DATE **DECEMBER 26, 2014**.

EPA SEP

REMOVE 5,400 SF OF EXISTING ASPHALT PAVEMENT AND REPLACE WITH PERMEABLE PAVEMENTS (ASPHALT AND CLAY PAVERS)

ENGINEER'S SEAL				SURVEY INFORMATION		BENCH MARKS		AS BUILT INFORMATION	
				NO.	BY	DATE	FOUND MONUMENT "TAB. B"	CONTRACTOR	DATE
	1	9/24/14	CITY COMMENT				A CITY OF ALBUQUERQUE STAINLESS STEEL ROD SET BENEATH A 5 1/2"	WORK STARTED BY	DATE
	NO.	DATE	REMARKS				NGS ACCESS COVER, STAMPED "TAB. B, 1994".	ACCEPTANCE BY	DATE
	REVISIONS						X = 1540960.370	COA	DATE
	DESIGN						Y = 1519518.103	VERIFICATION BY	DATE
	DESIGNED BY:			DATE: JULY 21, 2014			ELEVATION IS 5195.90 (NAD 1988)	HZI	DATE
	DRAWN BY:			DATE: JULY 21, 2014				MICRO-FILM INFORMATION	
	DWG NAME:			PROJ #:	R30-2309-01			RECORDED BY	DATE
CHECKED BY: SAE			DATE: JULY 21, 2014				NO.		

Designed By:

HUITT-ZOLIARS
Huitt-Zoliars, Inc. Albuquerque
6501 Americas Parkway, Suite 550
Albuquerque, New Mexico 87110
Phone (505) 883-8114 Fax (505) 883-5022

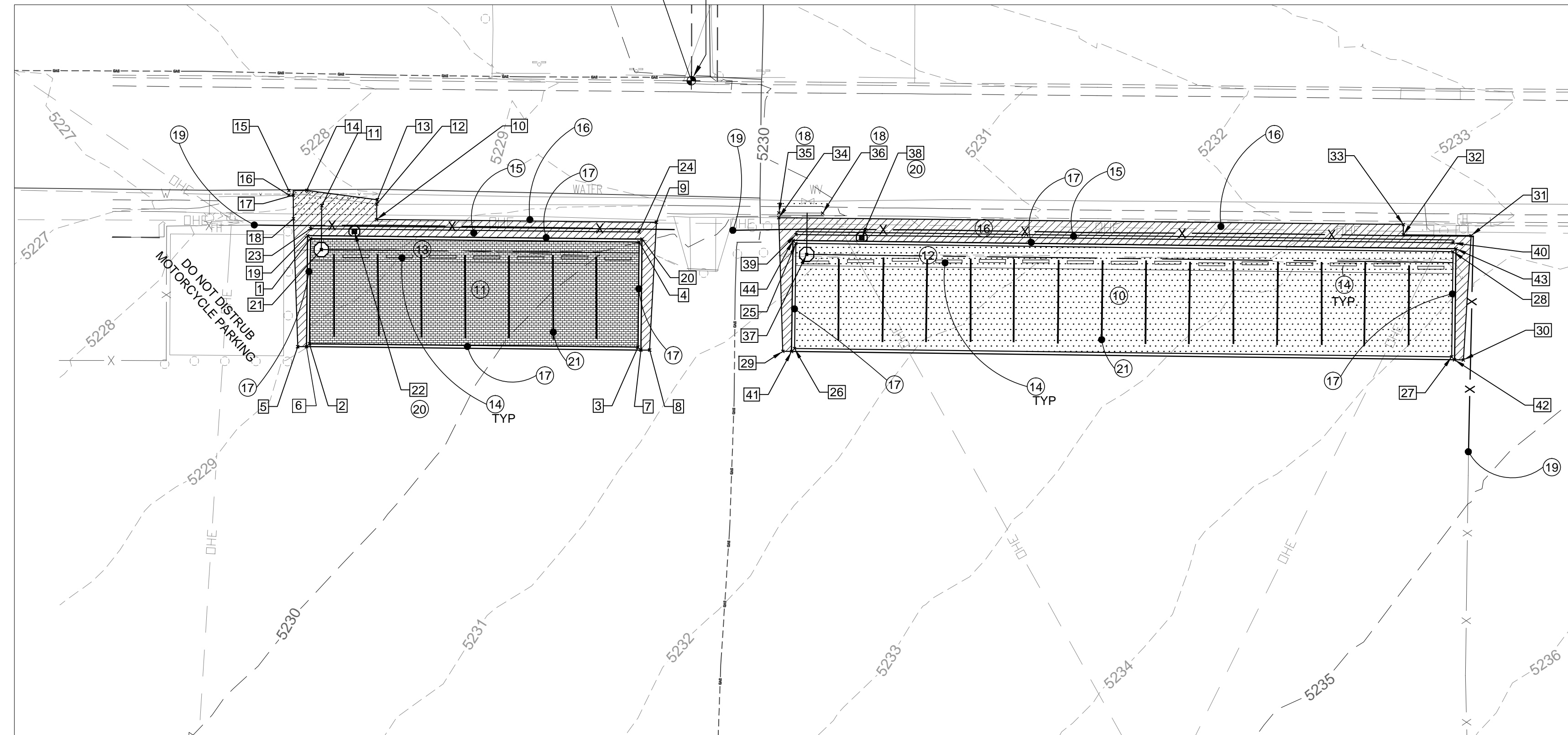


CITY OF ALBUQUERQUE
DEPARTMENT OF MUNICIPAL DEVELOPMENT

TITLE:
SEP PROJECT AT PINO MAINTENANCE YARD
DRAINAGE PLAN

Design Review Committee		City Engineer		Last Update	Mo./Day/Yr.		Mo./Day/Yr.	
City Project No.		Zone Map No.		Sheet		Of		
528002				3		7		

Plotted: 12/26/2014 9:06:40 AM, By: Eddings, Scott
H:\proj\R302309.01 Pino Yards\CAD\Sheets\100% S
Last Saved: 12/26/2014 9:06:14 AM, seedings



PAVING AND MARKING PLAN

RECORD DRAWINGS

I, SCOTT A. EDDINGS, REGISTERED IN NEW MEXICO AS A PROFESSIONAL ENGINEER NO. 12856. HERBY CERTIFY THAT THIS PROJECT WAS BUILT IN SUBSTANTIAL COMPLIANCE WITH THESE PLANS.
DATE DECEMBER 26, 2014.

LAYOUT INFORMATION

Point Table				
Point #	Raw Description	Elevation	Northing	Easting
1	PAVER EDGE	5228.880	1517588.2500	1542471.5123
2	PAVER EDGE	5229.000	1517564.2512	1542471.2681
3	PAVER EDGE	5230.670	1517563.4881	1542546.2684
4	PAVER EDGE	5230.550	1517587.4868	1542546.5042
5	ASPHALT	5228.930	1517563.5891	1542468.6000
6	CONCRETE CUTOFF WALL	5228.980	1517563.5911	1542470.5943
7	CONCRETE CUTOFF WALL	5230.590	1517562.8143	1542546.9244
8	ASPHALT	5230.730	1517562.8163	1542548.9187
9	ASPHALT	5229.900	1517591.9695	1542550.4613
10	ASPHALT	5228.430	1517592.6016	1542486.5963
11	2" PVC PIPE	5228.080	1517595.7492	1542474.0887
12	ASPHALT	5228.150	1517596.1070	1542486.6310
13	ASPHALT	5228.090	1517597.0983	1542486.7624
14	ASPHALT	5227.840	1517599.2334	1542470.6494
15	ASPHALT	5227.750	1517599.1780	1542466.5903
16	ASPHALT	5227.720	1517598.1781	1542466.5803
17	ASPHALT	5227.740	1517598.1679	1542467.5803
18	ASPHALT	5228.310	1517592.7894	1542467.6248
19	CONCRETE CUTOFF WALL	5228.880	1517588.9237	1542470.8521
20	CONCRETE CUTOFF WALL	5230.550	1517588.1470	1542547.1822
21	SAMPLING PORT	5228.900	1517585.7247	1542473.9867
22	STORM INLET	5228.800	1517589.8982	1542481.5284
23	ASPHALT CURB	5228.600	1517590.4999	1542471.5352
24	ASPHALT CURB	5230.300	1517589.7367	1542546.5313
25	PERMEABLE ASPHALT	5231.210	1517587.1588	1542582.9949
26	PERMEABLE PAVEMENT	5231.330	1517563.1607	1542581.2916
27	PERMEABLE ASPHALT	5234.260	1517561.2654	1542731.9796
28	PERMEABLE ASPHALT	5234.140	1517585.2634	1542732.2829
29	ASPHALT	5231.290	1517562.5278	1542579.3167
30	ASPHALT	5234.290	1517560.5651	1542734.6377
31	ASPHALT	5233.580	1517588.9312	1542736.4039
32	ASPHALT	5233.420	1517589.0886	1542720.9314
33	ASPHALT	5233.200	1517591.4617	1542720.9555
34	ASPHALT	5230.300	1517593.0207	1542578.3944
35	FL	5229.690	1517594.1172	1542578.4083
36	FL	5229.880	1517594.0657	1542588.4084
37	SAMPLING PORT	5231.360	1517584.6274	1542584.7631
38	INLET	5231.200	1517588.4688	1542597.3366
39	ASPHALT CURB	5231.100	1517589.1586	1542582.3201
40	ASPHALT CURB	5233.500	1517587.2633	1542732.3082
41	CONCRETE CUTOFF WALL	5231.330	1517562.5025	1542581.3166
42	CONCRETE CUTOFF WALL	5234.260	1517560.5903	1542732.6378
43	CONCRETE CUTOFF WALL	5234.230	1517585.9216	1542732.9579
44	CONCRETE CUTOFF WALL	5231.210	1517587.8338	1542581.6367

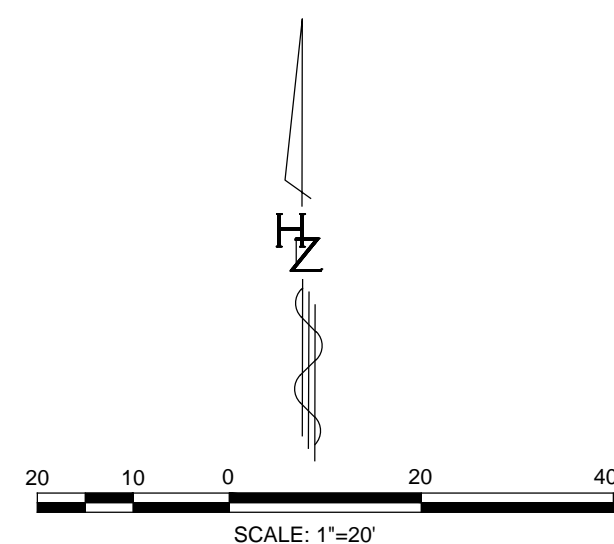
* AS-BUILT

* AS-BUILT

* AS-BUILT

KEYED NOTES

- (10) CONSTRUCT PERMEABLE ASPHALT PER DETAILS, SHEET 5
- (11) CONSTRUCT PERMEABLE CLAY PAVERS PER DETAILS, SHEET 6
- (12) CONSTRUCT LINED SAMPLING BASIN PER DETAILS SHEET 5
- (13) CONSTRUCT LINED SAMPLING BASIN PER DETAILS SHEET 6
- (14) INSTALL 6" PRE-CAST CONCRETE PARKING BUMPER- FASTEN WITH #4 REBAR DRILLED AND EPOXIED INTO PAVEMENT 12" MIN.
- (15) CONSTRUCT ASPHALT CURB PER COA STD DWG 2415B
- (16) CONSTRUCT ASPHALT PAVEMENT - 2" ASPHALT (SP IV) OVER 12" PREPARED SUBGRADE (95% ASTM D-1557)
- (17) CONSTRUCT CONCRETE CUT-OFF WALL PER COA STD DWG 2415B
- (18) CONSTRUCT PCC MEDIAN CURB GUTTER PER COA STD DWG 2415B
- INSTALL 6" CHAIN LINK FENCE AND POSTS W/ BARB WIRE PER CITY SPECIFICATIONS, REUSE FENCE FABRIC TO FULLEST EXTENT
- (19) PRACTICAL. FENCE SHALL BE INSTALLED TO LIMITS OF REMOVAL.
- (20) CONSTRUCT INLET PER DETAIL ON SHEET 5
- (21) PLACE 4" SOLID WHITE PAINTED PAVEMENT MARKING 3 PASSES



Designed By:

HUITT-ZOLIARS
Huitt-Zoliars, Inc. Albuquerque
6501 Americas Parkway, Suite 550
Albuquerque, New Mexico 87110
Phone (505) 883-8114 Fax (505) 883-5022

CITY OF ALBUQUERQUE
DEPARTMENT OF MUNICIPAL DEVELOPMENT

TITLE:

SEP PROJECT AT PINO MAINTENANCE YARD

Design Review Committee

City Engineer

--	--

City Project No.

Zone Map No.

Sheet

Of



I, SCOTT A. EDDINGS, REGISTERED IN NEW MEXICO AS A PROFESSIONAL ENGINEER NO. 12856. HERBY CERTIFY THAT THIS PROJECT WAS BUILT IN SUBSTANTIAL COMPLIANCE WITH THESE PLANS.
DATE DECEMBER 26, 2014.



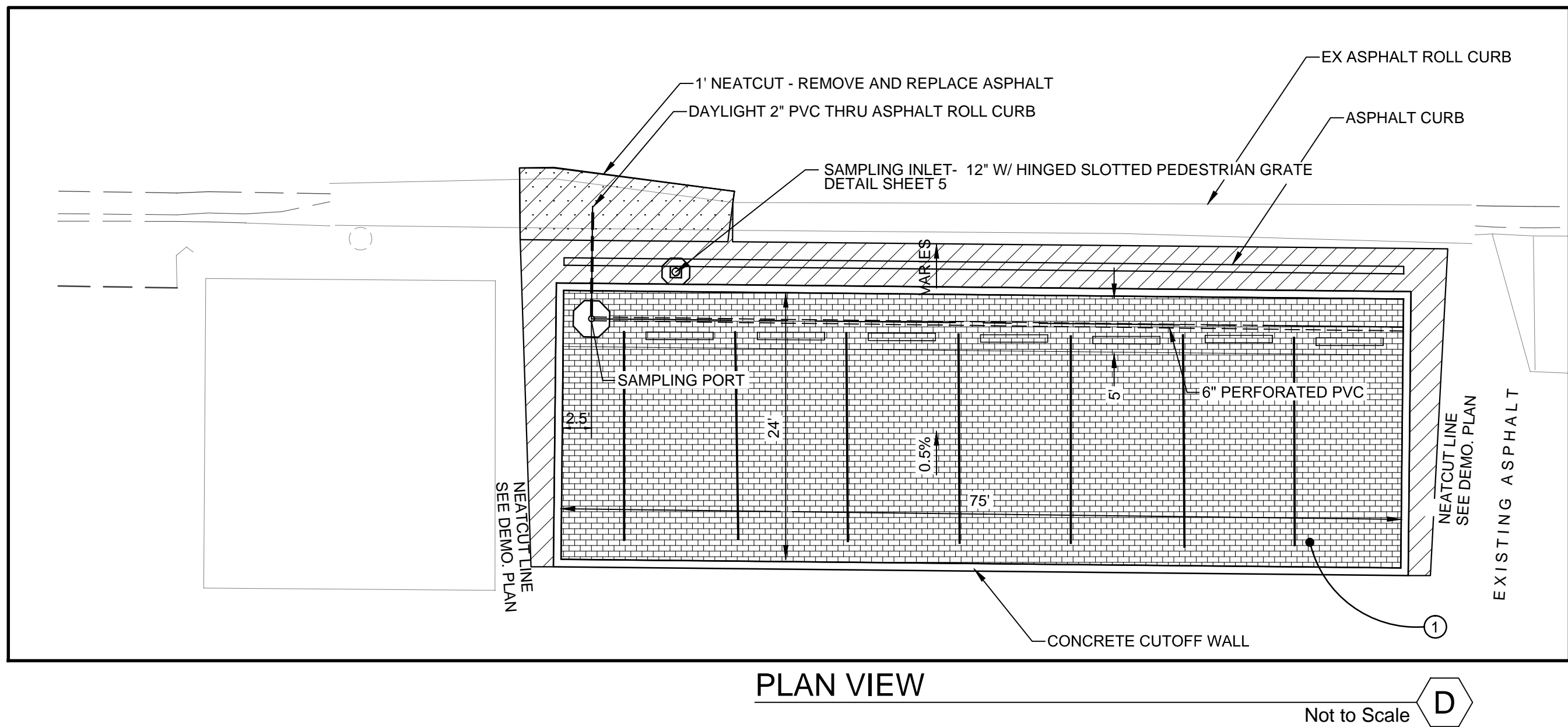
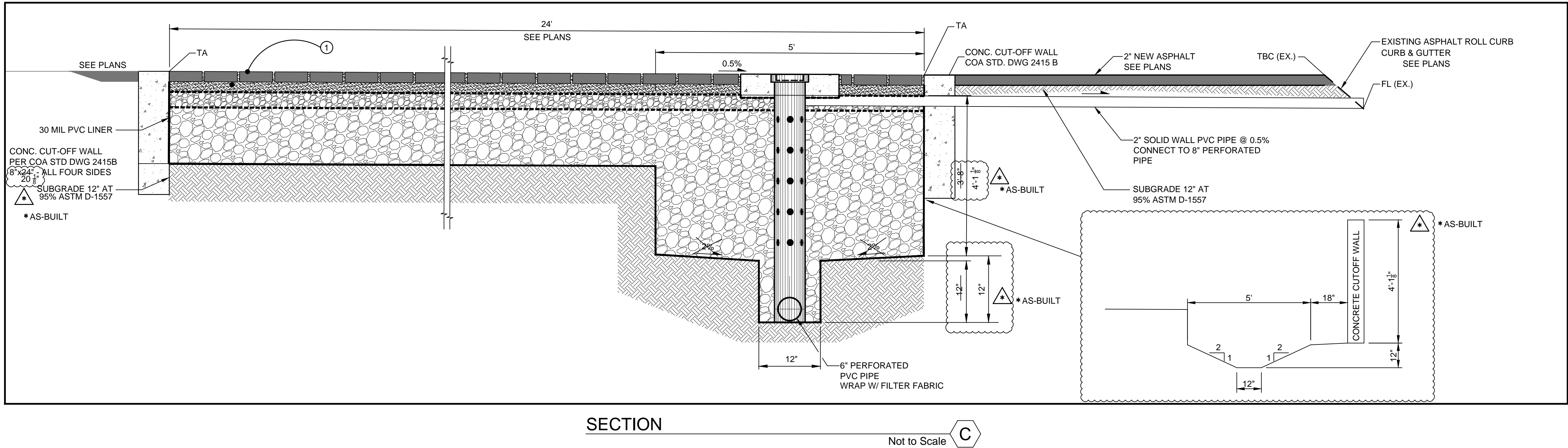
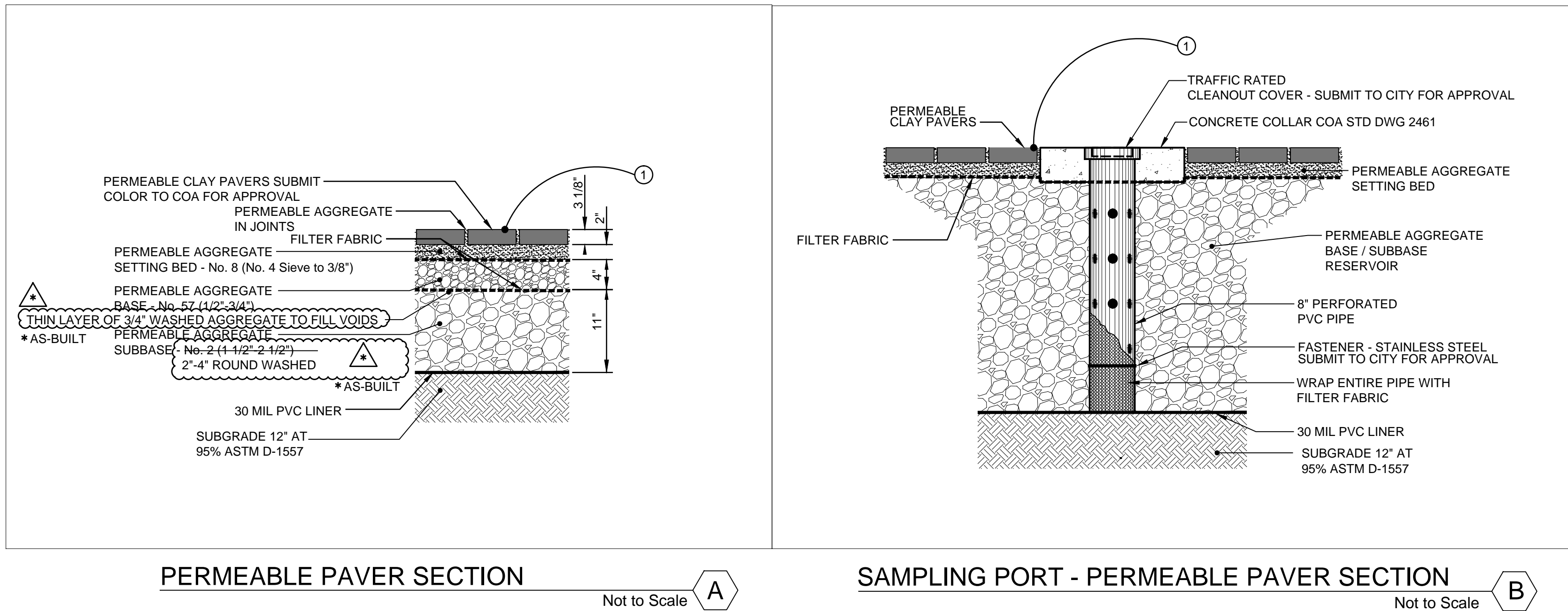
9/12/14

CITY OF ALBUQUERQUE
DEPARTMENT OF MUNICIPAL DEVELOPMENT

TITLE:
SEP PROJECT AT PINO MAINTENANCE YARD
PERMEABLE ASPHALT SECTION AND DETAILS

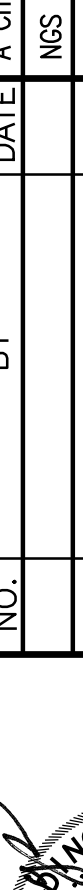
Design Review Committee	City Engineer	Last Update	Mo./Day/Yr.	Mo./Day/Yr.
City Project No.	528002	Zone Map No.	Sheet 5	Of 7

Plotted: 2/22/2015 5:08:47 AM, By: Edgings, Scott
H:\proj\R302309.01 Pino Yards\CAD\Sheets\100% SUBMITTAL\6. DETAILS.dwg
Last Saved: 2/22/2015 5:08:33 AM, settings



KEYED NOTES

- 1 CONSTRUCT PERMEABLE CLAY PAVERS IN ACCORDANCE WITH MANUFACTURERS SPECIFICATIONS. SUBMIT TO COA FOR REVIEW AND APPROVAL PRIOR TO COMMENCING WORK.

ENGINEER'S SEAL			SURVEY INFORMATION		BENCH MARKS		AS BUILT INFORMATION	
 9/12/14			FIELD NOTES		FOUND MONUMENT "TAB. B"		CONTRACTOR TLC DATE	
			NO. BY DATE		A CITY OF ALBUQUERQUE STAINLESS STEEL ROD SET BENEATH A 5 1/2"		WORK STARTED BY DATE	
					NGS ACCESS COVER, STAMPED "TAB. B, 1994".		ACCEPTANCE BY COA DATE 12/29/14	
					X = 1540960.370		FIELD ACCEPTANCE BY COA DATE 12/29/14	
					Y = 1519518.103		DRAWINGS CORRECTED BY HZI DATE 12/29/14	
			ELEVATION IS 5195.90 (NAD 1988)		MICRO-FILM INFORMATION		RECORDED BY DATE	
							NO.	

Designed By:

HUITT-ZOLIARS
Huitt-Zoliars, Inc. Albuquerque
6501 Americas Parkway, Suite 550
Albuquerque, New Mexico 87110
Phone (505) 883-8114 Fax (505) 883-5022



CITY OF ALBUQUERQUE
DEPARTMENT OF MUNICIPAL DEVELOPMENT

TITLE:
**SEP PROJECT AT PINO MAINTENANCE YARD
PERMEABLE PAVER SECTION AND DETAILS**

Design	Review	Committee	City Engineer	Mo./Day/Yr.	

City Project No.	528002	Zone Map No.	Sheet 6	Of 7
------------------	--------	--------------	---------	------

RECORD DRAWINGS

I, **SCOTT A. EDDINGS**, REGISTERED IN NEW MEXICO AS A PROFESSIONAL ENGINEER NO. 12858, HERBY CERTIFY THAT THIS PROJECT WAS BUILT IN SUBSTANTIAL COMPLIANCE WITH THESE PLANS.
DATE **DECEMBER 26, 2014**.



ORANGE BARREL

PROJECT WAS COMPLETED WITHIN ONE
WORK ZONE AND ONE PHASE

FOR INFORMATION ONLY

RECORD DRAWINGS

I, SCOTT A. EDDINGS, REGISTERED IN NEW MEXICO AS A PROFESSIONAL ENGINEER NO. 12856, HERBY CERTIFY THAT THIS PROJECT WAS BUILT IN SUBSTANTIAL COMPLIANCE WITH THESE PLANS.
DATE DECEMBER 26, 2014

Designed By:

HUITT-ZOLLARS

Huitt-Zollars, Inc. Albuquerque
6501 Americas Parkway, Suite 550
Albuquerque, New Mexico 87110
Phone (505) 883-8114 Fax (505) 883-5022

CITY OF ALBUQUERQUE

DEPARTMENT OF MUNICIPAL DEVELOPMENT

TITLE:
SEP PROJECT AT PINO MAINTENANCE YARD
WORK ZONE EXHIBIT

Design Review Committee		City Engineer		Last Update	Mo./Day/Yr.	Mo./Day/Yr.
City Project No.		Zone Map No.	Sheet	Of		
5280.02						