



CITY OF ALBUQUERQUE  
DEPARTMENT OF MUNICIPAL DEVELOPMENT  
CONSTRUCTION DRAWINGS  
PINO YARDS STORM WATER POND  
LINER REPLACEMENT

CITY OF ALBUQUERQUE PROJECT NO. 528090 (DESIGN)

JULY, 2020

INDEX OF DRAWINGS	
Sheet Number	Sheet Title
1	COVER SHEET
2	SITE REMOVAL PLAN
3	SITE LAYOUT PLAN
4	DETAILS SHEET



UTILITY COMPANY CONTACTS

ALBUQUERQUE BERNALILLO  
COUNTY WATER UTILITY  
AUTHORITY  
(WATER & SEWER)

JANE RAE, PE  
Pr. Engineer  
P.O. Box 568  
Albuquerque, New Mexico 87103  
(505) 289-3087  
jrae@abcwua.org

PNM-ELECTRIC

MIKE MOYER  
Engineering Representative  
4201 Edith Blvd., NE MS-ES10  
Albuquerque, New Mexico 87107  
(505) 241-3697

NEW MEXICO GAS COMPANY

PAULA McAFEE  
Paula.McAfee@nmgeo.com  
(505)697-6808  
DANNA DOMINGUEZ  
danna.dominguez@nmgeo.com  
ALBERT BOLLADO  
Albert.martin.bollado@nmgeo.com  
4625 Edith Blvd., NE, MS-GS66  
Albuquerque, New Mexico 87107

CENTURY LINK

ABDUL BHUIYAN  
Local Network Engineer II  
4301 Bogan Ave. NE  
Albuquerque, New Mexico 87109  
(505)767-7443  
abdul.bhuiyan2@centurylink.com  
Benjamin Wiltbank  
(505)252-9472  
benjamin.wiltbank@centurylink.com

CENTURY LINK NATIONAL

LARRY KELLY  
Senior Operations Technician  
400 Tijeras Ave. NW, Suite 570  
Albuquerque, New Mexico 87102  
(505) 246-0501

TERRA TECHNOLOGIES, INC

Mike Thompson  
(928) 221-4133  
mthompson@terratechllc.net

COMCAST CABLE

MIKE MORTUS  
Construction Specialist  
8440 Washington, St. NE  
Albuquerque, New Mexico 87113  
(505) 271-3644  
Mike\_mortus@cable.comcast.com

AT&T

SEAN KELLY  
GNFO Manager - New Mexico  
111 Third St., NW  
Albuquerque, New Mexico 87102  
(505) 845-2838

WINDSTREAM

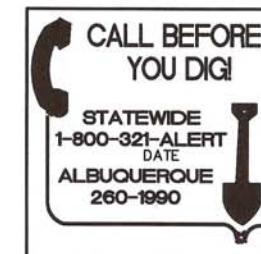
RICHARD MUELLER  
Supervisor of Outside Techs.  
505 Marquette Ave. NW, Suite 1600  
Albuquerque, New Mexico 87102  
(505) 217-0038

LEVEL 3  
COMMUNICATIONS, LLC

JORDAN ADAMS  
Business Analyst -OSP Relocations  
100 S Cincinnati Ave, Suite 1200  
Tulsa, Oklahoma 74103  
(918) 547-0817  
jordan.adams@centurylink.com

VERIZON/MCI WORLDCOM

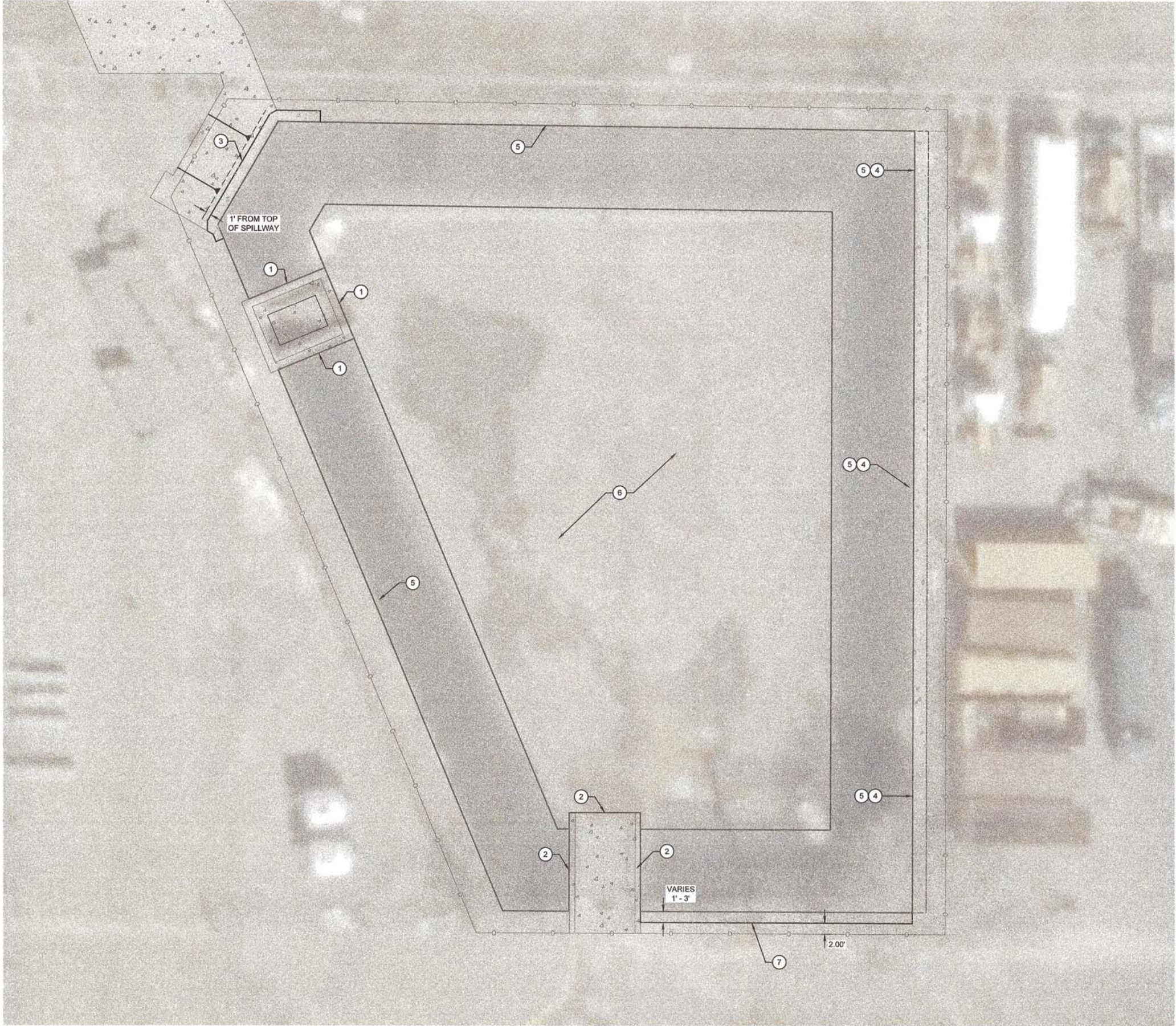
LEONARD MANZANARES  
Engineer III  
6001 Midway Park Blvd. NE  
Albuquerque, New Mexico 87109  
(505) 274-4127



							</		



Q:\SEC---PROJECTS\117106-18\CADD\PLANSET\2 SITE REMOVAL PLAN.dwg

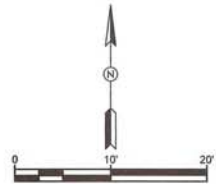


# BUILD NOTES

1. REMOVE AND DISPOSE OF SECURING BATTONS. REMOVE EXISTING LINER FROM CONCRETE HEADWALL. CUT BOLTS FLUSH WITH CONCRETE.
2. REMOVE AND DISPOSE OF SECURING BATTONS. REMOVE EXISTING LINER FROM CONCRETE DRIVEWAY. CUT BOLTS FLUSH WITH CONCRETE.
3. NEAT LINE SAWCUT EXISTING CONCRETE SPILLWAY AS NECESSARY TO REMOVE EXISTING LINER.
4. REMOVE AND DISPOSE EXISTING LINEAR CONCRETE SLAB.
5. REMOVE SOIL AND REMOVE AND DISPOSE EXISTING LINER (APPROXIMATELY 680± SY).
6. REMOVE AND DISPOSE EXISTING LINER (APPROXIMATELY 923± SY).
7. SAW CUT, REMOVE AND DISPOSE 1' - 3' LF OF EXISTING ASPHALT.

GENERAL NOTES

1. CLEAR, GRUB, REMOVE AND DISPOSE EXISTING VEGETATION WITHIN THE FENCE.



SEC JOB # 117106-18

CITY OF ALBUQUERQUE  
DEPARTMENT OF MUNICIPAL DEVELOPMENT  
ENGINEERING DIVISION

TITLE: PINO YARDS STORM WATER POND LINER REPLACEMENT  
SITE REMOVAL PLAN

Design Review Committee	City Engineer Approval	Last Design Update	No. / Day / Yr.	No. / Day / Yr.
City Project No. 528090	Zone Map No. D-18	Drawing No.	Sheet	Of
			2	4

AS BUILT INFORMATION		BENCH MARKS		SURVEY INFORMATION		ENGINEERS SEAL	
CONTRACTOR	DATE	NO.	DATE	NO.	DATE	NO.	DATE
STAKED BY	DATE	BY	DATE	BY	DATE	BY	DATE
ACCEPTANCE BY	DATE						
FIELD VERIFICATION BY	DATE						
REVISIONS BY	DATE						
CORRECTED BY	DATE						
MICRO-FILM INFORMATION		RECORDED BY		NO.		DATE	



REVISIONS	DATE	BY
DESIGN	7-20-20	GN
AB	7-20-20	AB
GN	7-20-20	GN

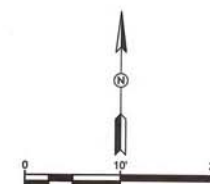


1. APPLY A 3" THICK LAYER OF FIBER REINFORCED SHOTCRETE TO POND BOTTOM.
2. APPLY A 2" THICK LAYER OF FIBER REINFORCED SHOTCRETE TO SIDE SLOPES.
3. APPLY A 2" THICK LAYER OF FIBER REINFORCED SHOTCRETE TO SIDE SLOPES UP TO EXISTING ASPHALT.
4. EXISTING CONCRETE TO BE PROTECTED IN PLACE.
5. EXISTING ASPHALT TO BE PROTECTED IN PLACE.
6. NEW GRADE OF SHOTCRETE TO MATCH EXISTING CONCRETE TOE OF RAMP.
7. NEW GRADE OF SHOTCRETE TO MATCH EXISTING CONCRETE TOE OF OIL WATER SEPARATOR.

1. PROVIDE SHOTCRETE MIX WITH COMPRESSIVE STRENGTH OF 4,000 PSI @ 28 DAYS.
2. MIX DESIGN MUST MEET THE REQUIREMENTS OF ACI 506.2-13.

Diagram illustrating the cross-sections of the road structure:

- POND BOTTOM
- POND SIDE SLOPES
- NEW CONCRETE
- EXISTING CONCRETE
- EXISTING ASPHALT



SEC JOB # 117106-18

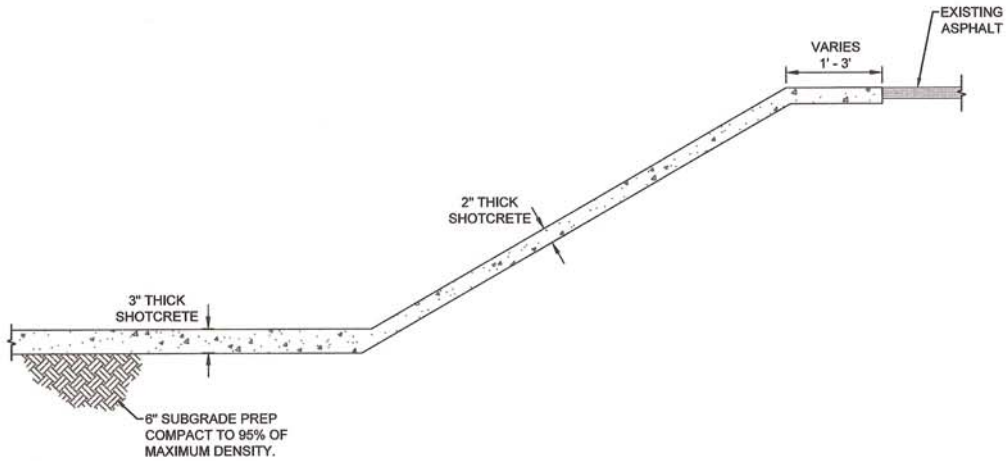
CITY OF ALBUQUERQUE  
DEPARTMENT OF MUNICIPAL DEVELOPMENT

**ENGINEERING DIVISION**  
**TITLE: PINO YARDS STORM WATER POND LINER REPLACEMENT**  
**SITE LAYOUT PLAN**

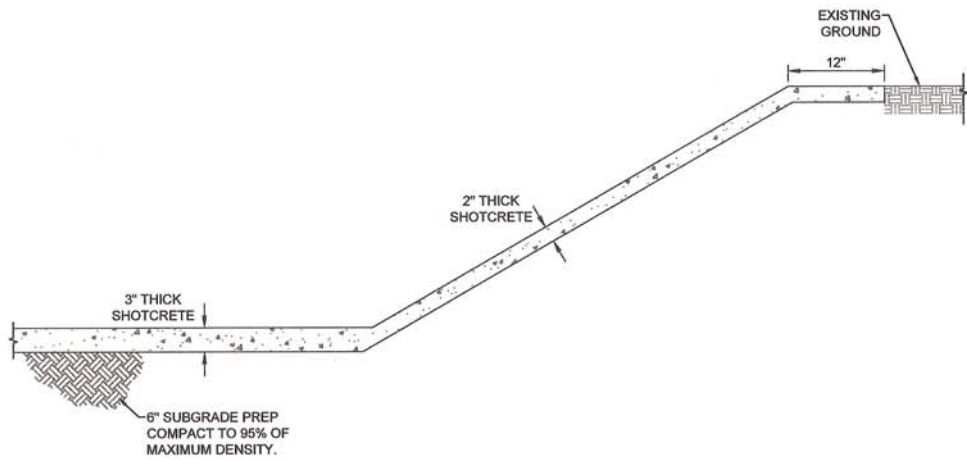
Design Review Committee	City Engineer Approval	Last Design Update	No. / Day / Yr.	No. / Day / Yr.
City Project No. <b>528090</b>	Zone Map No. <b>D-18</b>	Drawing No.	Sheet <b>3</b>	Of <b>4</b>



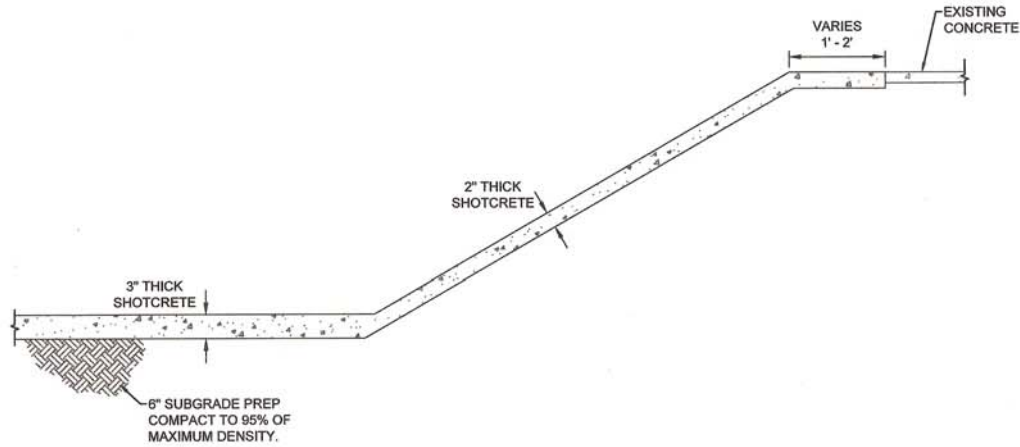
Q:\SEC\PROJECTS\117106-18\CADD\PLANSET\4 DETAILS SHEET.dwg



**A** TYPICAL SLOPE / BOTTOM SECTION  
SCALE: NTS




**B** TYPICAL SLOPE / BOTTOM SECTION  
SCALE: NTS



**C** TYPICAL SLOPE / BOTTOM SECTION  
SCALE: NTS



CITY OF ALBUQUERQUE DEPARTMENT OF MUNICIPAL DEVELOPMENT ENGINEERING DIVISION			
TITLE: PINO YARDS STORM WATER POND LINER REPLACEMENT DETAILS SHEET			
Design Review Committee	City Engineer Approval	No. / Day / Yr.	
City Project No. <b>528090</b>	Zone Map No. <b>D-18</b>	Drawing No.	Sheet <b>4</b> Of <b>4</b>

						ENGINEERS SEAL		SURVEY INFORMATION		BENCH MARKS		AS BUILT INFORMATION			
								FIELD NOTES				CONTRACTOR			
								NO.		BY		DATE			
												WORK STARTED BY		DATE	
												INSPECTOR'S		DATE	
												FIELD CHANGE BY		DATE	
												VERIFICATION BY		DATE	
												DRAWINGS		DATE	
												CORRECTED BY		DATE	
												MICRO-FILM INFORMATION			
												RECORDED BY		DATE	
												NO.			