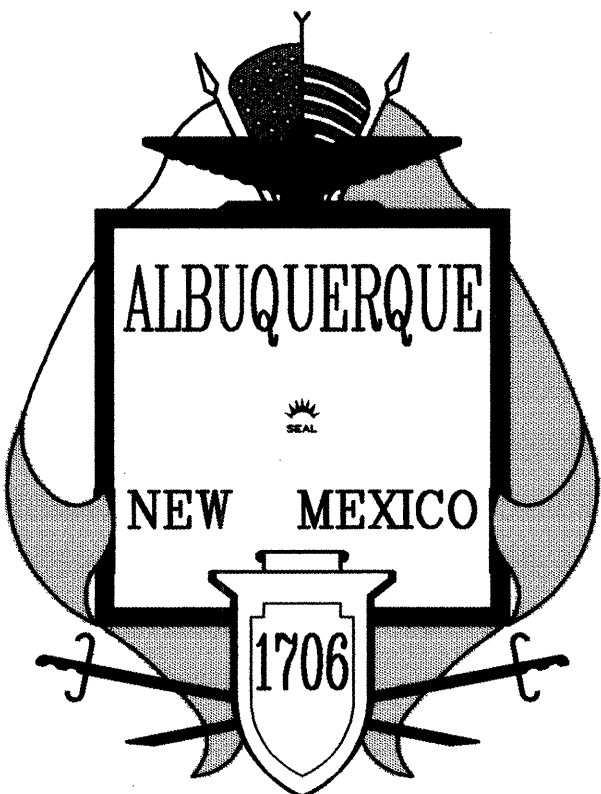


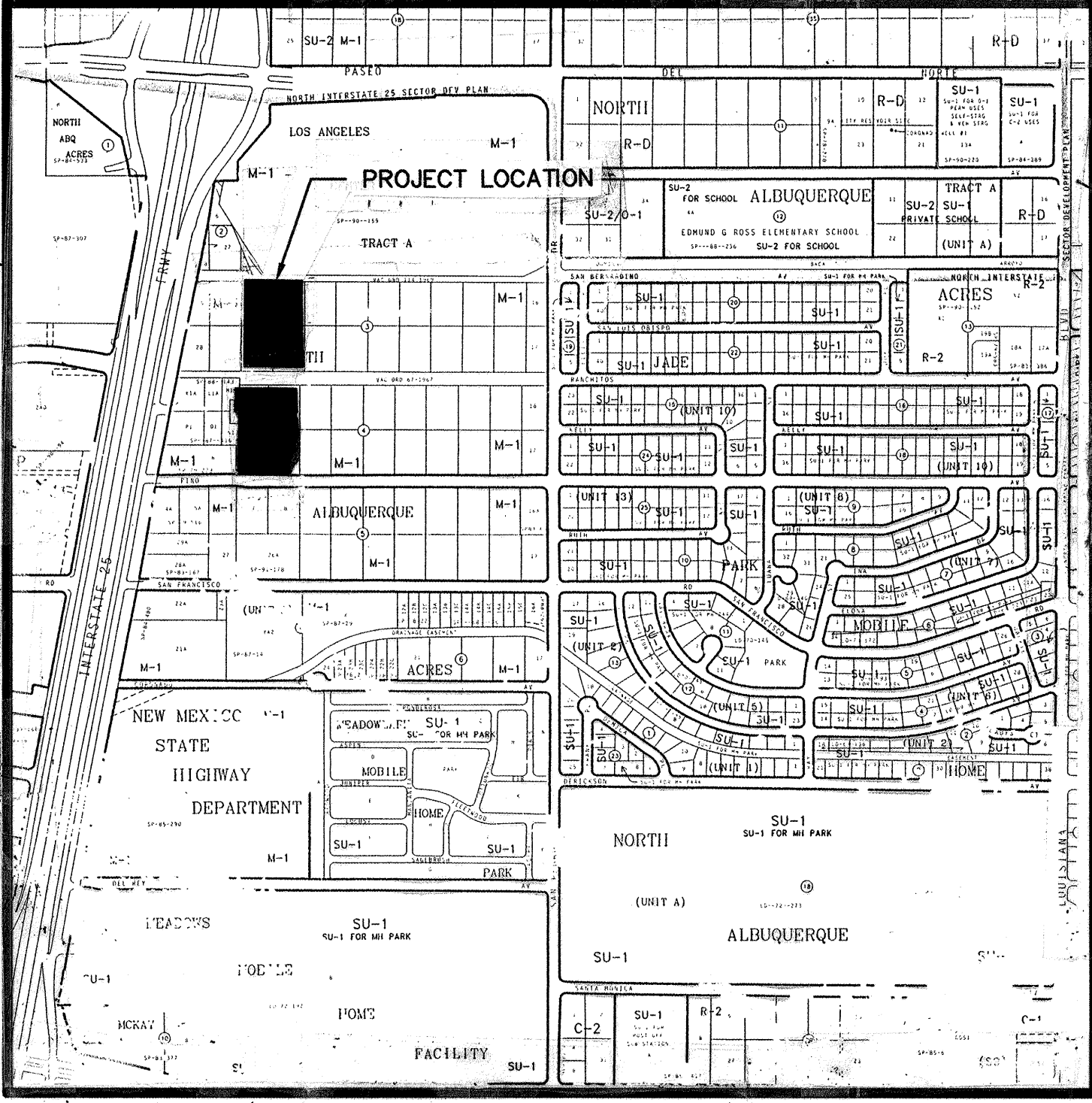
PINO YARDS DRAINAGE AND PAVEMENT IMPROVEMENTS



INDEX OF SHEETS

SHEET NO.	DESCRIPTION
C1 OF 7	COVER SHEET, INDEX OF DRAWINGS, AND LOCATION MAP
C2 OF 7	LOT PLAN
C3 OF 7	NORTH LOT GRADING AND PAVING PLAN
C4 OF 7	WEST LOT GRADING AND PAVING PLAN
C5 OF 7	EAST LOT GRADING AND PAVING PLAN
C6 OF 7	TANK FARM AND REFUELING ISLAND LINER AND CRACK REPAIR
C7 OF 7	STORM DRAIN AND INLET PLAN AND PROFILE

FOR INFORMATION ONLY



VICINITY MAP

PINO YARDS

SCALE: 1" = 400'

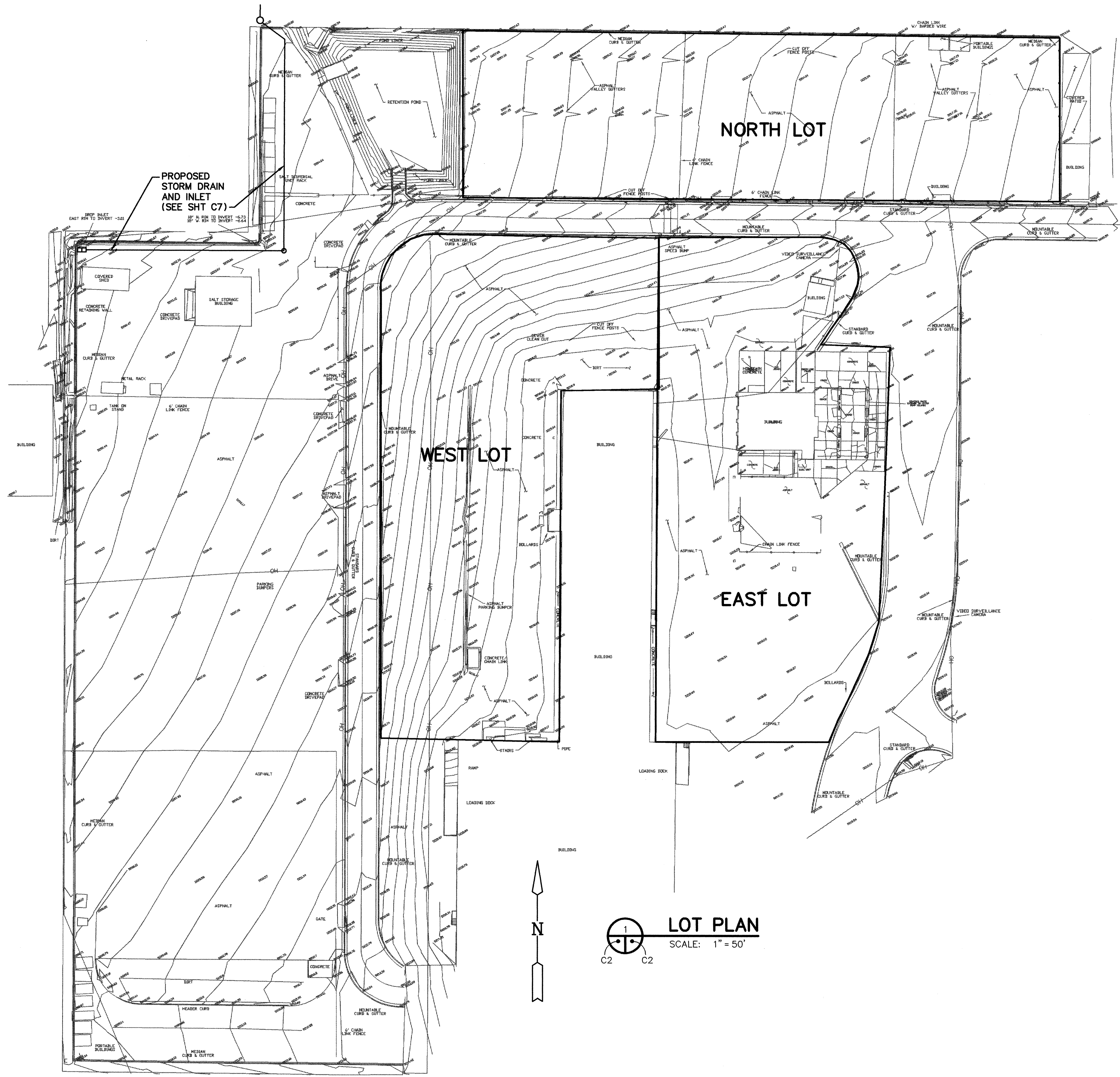
(ZONE ATLAS MAP NO. D-18)

PROJECT REFERENCES:

- DRAINAGE IMPROVEMENTS AT PINO YARDS — PHASE II, RESOURCE TECHNOLOGY, INC., FEBRUARY, 1990
- CITY OF ALBUQUERQUE STANDARD SPECIFICATIONS FOR PUBLIC WORKS CONSTRUCTION, UPDATE #6, JULY, 1993
- SURVEY SUPPLIED BY CITY OF ALBUQUERQUE ENGINEERING GROUP/SURVEY SECTION

LEEDSHILL—HERKENHOFF, INC
500 Copper Avenue NW
P.O. Box 1217
Albuquerque, NM 87103
(505)247-0294

1/94032.16CD1/PINOCVR/8-17-95/RAS						
REV.	SHEETS	CITY ENGINEER	DATE	USER DEPARTMENT	DATE	USER DEPARTMENT
ENGINEERS STAMP & SIGNATURE		APPROVALS	ENGINEER	DATE	*****	
		DRC Chairman	<i>Sally G. Darr</i>	9-14-95	APPROVED FOR CONSTRUCTION	
		Transportation	<i>W. R. D.</i>	8-25-95		
		Water/Wastewater	<i>NIA RWC</i>	8-23-95		
		Hydrology	<i>C. Montoya</i>	8-28-95		
		Parks				
Const. Mngmt.					City Engineer	
Record Drawing					Date	
City Project No.				5281.90	Sheet	Of
					C1	7



- NOTES**
- A FOR NORTH LOT, SEE SHEET C3.
 - B FOR WEST LOT, SEE SHEET C4.
 - C FOR EAST LOT, SEE SHEET C5.
 - D FOR STORM DRAIN AND INLET, SEE SHEET C7.

AS BUILT INFORMATION			
CONTRACTOR	DATE	BY	DATE
WORK STARTED BY	DATE	INSPECTED BY	DATE
FIELD NOTES	DATE	FIELD LOCATION BY	DATE
REVISIONS	DATE	REVISIONS	DATE
MICRO-FILM INFORMATION			
RECORDED BY	DATE	NO.	

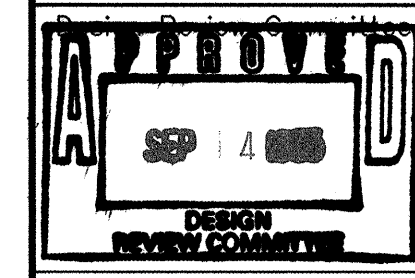
SURVEY INFORMATION			
FIELD NOTES	DATE	BY	DATE
NO.			

ENGINEER'S SEAL			
NO.	DATE	REMARKS	BY
REVISIONS			
DESIGNED BY	RA STOCKTON	DATE	AUG 1995
DRAWN BY	MD JENSEN	DATE	AUG 1995
CHECKED BY	TC BLAINE	DATE	AUG 1995

FOR INFORMATION ONLY

LEEDSHILL-HERKENHOFF, INC
500 Copper Avenue NW
P.O. Box 1217
Albuquerque, NM 87103
(505)247-0294

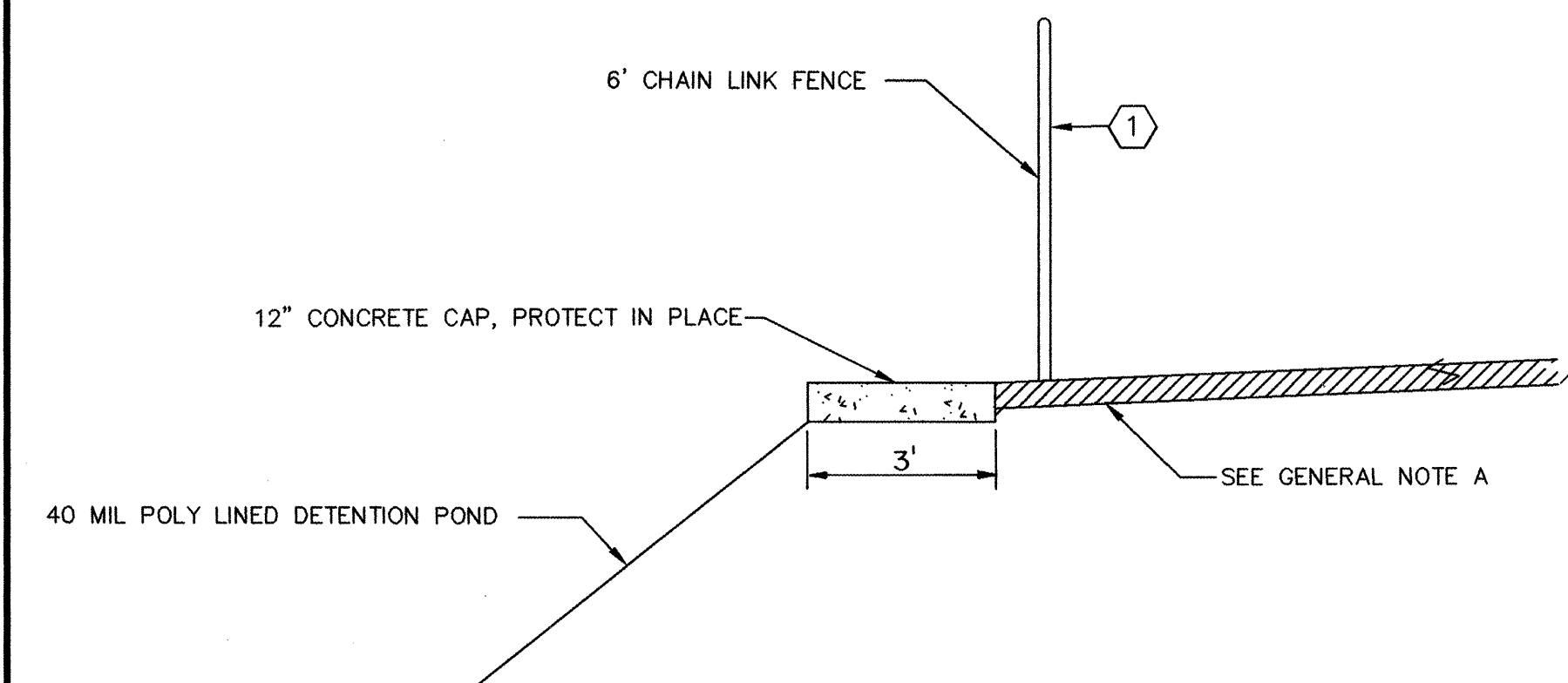
CITY OF ALBUQUERQUE
PUBLIC WORKS DEPARTMENT
PARKS AND GENERAL SERVICES
TITLE: PINO YARDS DRAINAGE AND PAVEMENT IMPROVEMENTS
LOT PLAN



City Engineer Approval

Last Design Update

Mo./Day/Yr.	Mo./Day/Yr.



GENERAL NOTES

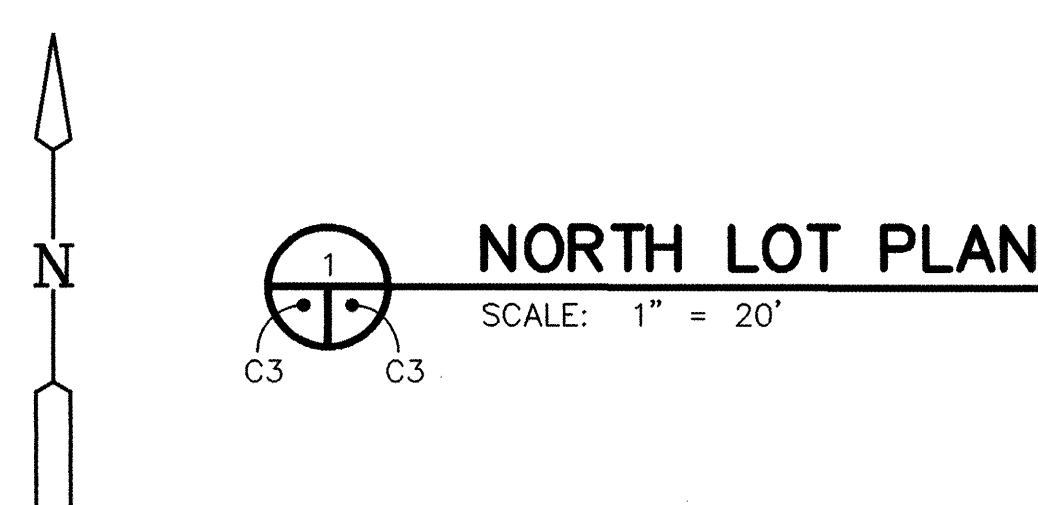
- A REMOVE EXISTING AC PAVEMENT AND BASE TO LIMITS SHOWN. INSTALL 2" 1800 LB STABILITY GRADE B AC PAVEMENT ON 2" 1800 LB GRADE A STABILITY AC PAVEMENT ON A MINIMUM OF 4" BASE COURSE PER SPEC SECTIONS 112 AND 116.

KEYED NOTES

- 1 REMOVE 6" HIGH CHAIN LINK FENCE, SALVAGE AND REINSTALL AT EXISTING LOCATION

LEGEND

- AC REMOVAL AND REPLACEMENT
CONCRETE
(9999.99) PROPOSED SPOT ELEVATION
C.O.A. PROJECT CONTROL POINT OR A.C.S. MONUMENT DO NOT DISTURB
ELECTRICAL PULL BOX
BOLLARD
PIPE
ELECTRIC TRANSFORMER
IRRIGATION CONTROL BOX
MANHOLE
DRAIN INLET
WATER VALVE
ELECTRICAL RISER
ENVIRONMENTAL TEST WELLS
GAS RISER
WATER RISER
9999.99 SPOT ELEVATION AT TOP BACK OF C & G OR TOP OF ASPHALT
9999.9 SPOT ELEVATION ON NATURAL GROUND
SUPPLEMENTAL POINT
RAILROAD TIE
WOOD STAKE
BUSH
LARGE TREE
POWER POLE (VIDEO SURVEILLANCE WHERE NOTED)
SIGN POST
- SD - STORM DRAIN LINE
- OH - OVERHEAD POWER LINE
SEWER CLEANOUT
CHAIN LINK FENCE
FIRE HYDRANT
POWER POLE W/LIGHT
CUT-OFF FENCE POSTS
+/- 1.0' ABOVE CONCRETE



FOR INFORMATION ONLY

LEEDSHILL-HERKENHOFF, INC.
500 Copper Avenue NW
P.O. Box 1217
Albuquerque, NM 87103
(505)247-0294

CITY OF ALBUQUERQUE PUBLIC WORKS DEPARTMENT PARKS AND GENERAL SERVICES	
TITLE: PINO YARDS DRAINAGE AND PAVEMENT IMPROVEMENTS NORTH LOT GRADING AND PAVING PLAN	
DESIGNED BY: RA STOCKTON	DATE: AUG 1995
DRAWN BY: MD JENSEN	DATE: AUG 1995
CHECKED BY: TC BLANE	DATE: AUG 1995
City Project No. 5281.90	
Zone Map No. D-18	
Sheet C3 Of 7	

SURVEY INFORMATION		BENCH MARKS		AS BUILT INFORMATION	
NO.	DATE	THIS TOPOGRAPHIC SURVEY IS BASED ON	CONTRACTOR	NO.	DATE
		ALBUQUERQUE SURVEY MONUMENTS "1-25-14" AND "11-D18". SEE CITY OF ALBUQUERQUE SURVEY MONUMENTATION LOGS FOR EXACT LOCATION.	WORK STAKED BY		
			DATE		
			ACCEPTANCE BY		
			DATE		
			FIELD LAYOUT BY		
			DATE		
			CORRECTION BY		
			DATE		
			RECORDED BY		
			DATE		

ENGINEER'S SEAL

REGISTERED PROFESSIONAL ENGINEER

FOR INFORMATION ONLY

REVISIONS

NO.	DATE	REMARKS	BY

LEEDSHILL-HERKENHOFF, INC.

DESIGNED BY: RA STOCKTON

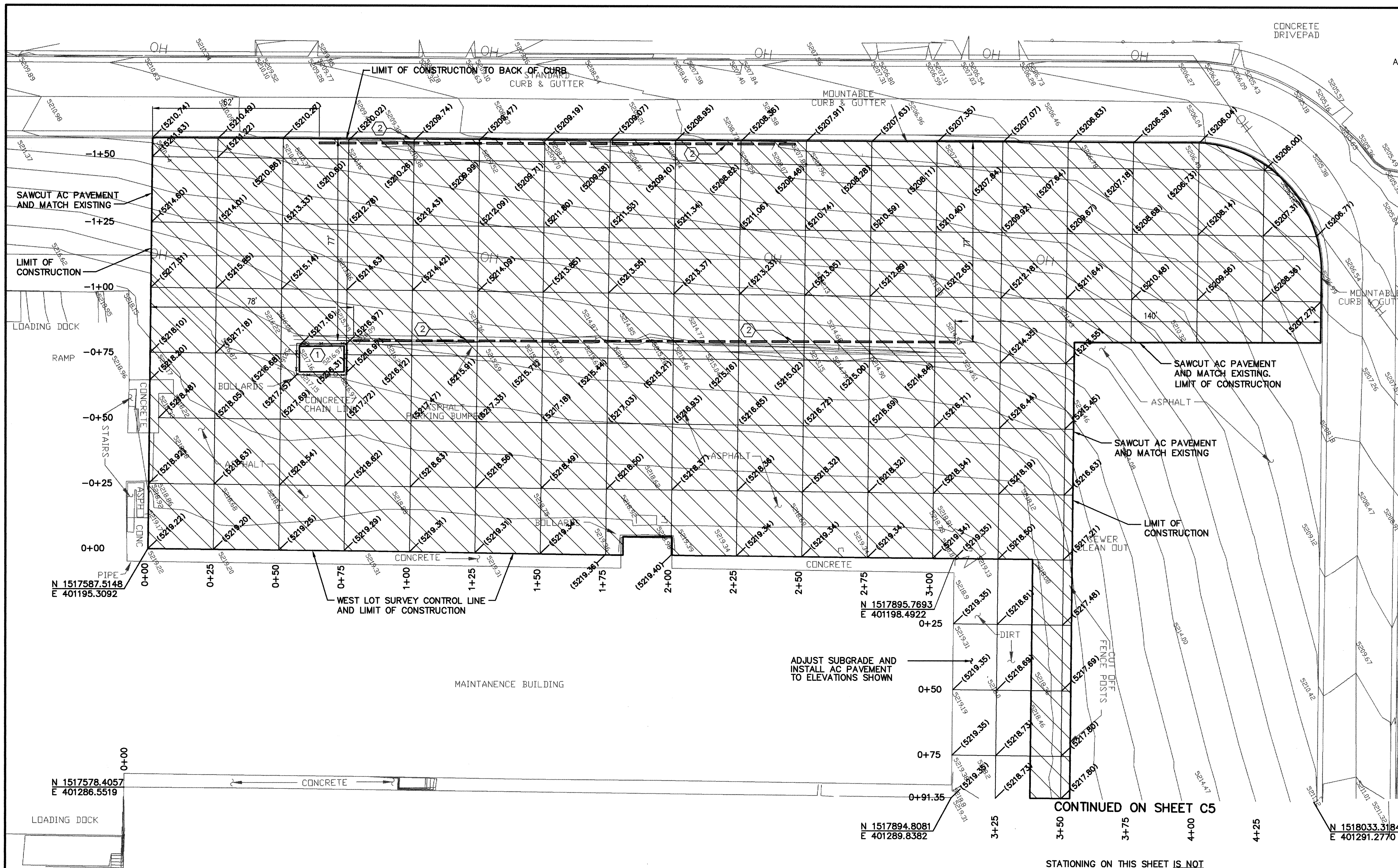
DRAWN BY: MD JENSEN

CHECKED BY: TC BLANE

DATE: AUG 1995

DATE: AUG 1995

DATE: AUG 1995



GENERAL NOTES

A REMOVE EXISTING AC PAVEMENT AND BASE TO LIMITS SHOWN. INSTALL 2" 1800 LB STABILITY GRADE B AC PAVEMENT ON 2" 1800 LB GRADE A STABILITY AC PAVEMENT ON A MINIMUM OF 4" BASE COURSE PER SPEC SECTIONS 112 AND 116.

KEYED NOTES

1 REMOVE 6" HIGH CHAIN LINK FENCE, SALVAGE AND REINSTALL AT EXISTING LOCATION

2 REMOVE EXISTING AC BERM AND INSTALL 6" CONCRETE PARKING BUMPERS. FACILITY MAINTENANCE TO PROVIDE CONTRACTOR WITH PARKING BUMPERS.

LEGEND

AC REMOVAL AND REPLACEMENT

CONCRETE

(9999.99) PROPOSED SPOT ELEVATION

C.O.A. PROJECT CONTROL POINT OR A.C.S. MONUMENT DO NOT DISTURB

PARKING BUMPER

ELECTRICAL PULL BOX

BOLLARD

PIPE

ELECTRIC TRANSFORMER

IRRIGATION CONTROL BOX

MANHOLE

DRAIN INLET

WATER VALVE

ELECTRICAL RISER

ENVIRONMENTAL TEST WELLS

GAS RISER

WATER RISER

9999.99 SPOT ELEVATION AT TOP BACK OF C & G OR TOP OF ASPHALT

9999.9 SPOT ELEVATION ON NATURAL GROUND

SUPPLEMENTAL POINT

RAILROAD TIE

WOOD STAKE

BUSH

LARGE TREE

POWER POLE (VIDEO SURVEILLANCE WHERE NOTED)

SIGN POST

- SD - STORM DRAIN LINE

- OH - OVERHEAD POWER LINE

SEWER CLEANOUT

CHAIN LINK FENCE

FIRE HYDRANT

POWER POLE W/LIGHT

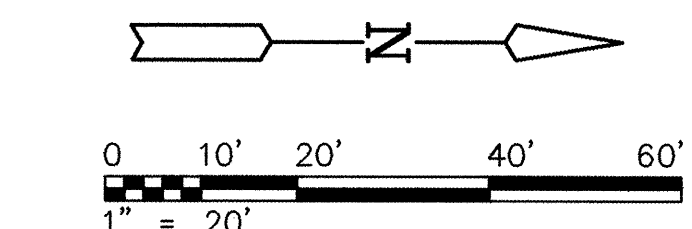
CUT-OFF FENCE POSTS

+/- 1.0' ABOVE CONCRETE

WEST LOT PLAN

SCALE: 1" = 20'

FOR INFORMATION ONLY



LEEDSHILL-HERKENHOFF, INC
500 Copper Avenue NW
P.O. Box 1217
Albuquerque, NM 87103
(505)247-0294

CITY OF ALBUQUERQUE
PUBLIC WORKS DEPARTMENT
PARKS AND GENERAL SERVICES

TITLE: PINO YARDS DRAINAGE AND PAVEMENT IMPROVEMENTS
WEST LOT
GRADING AND PAVING PLAN

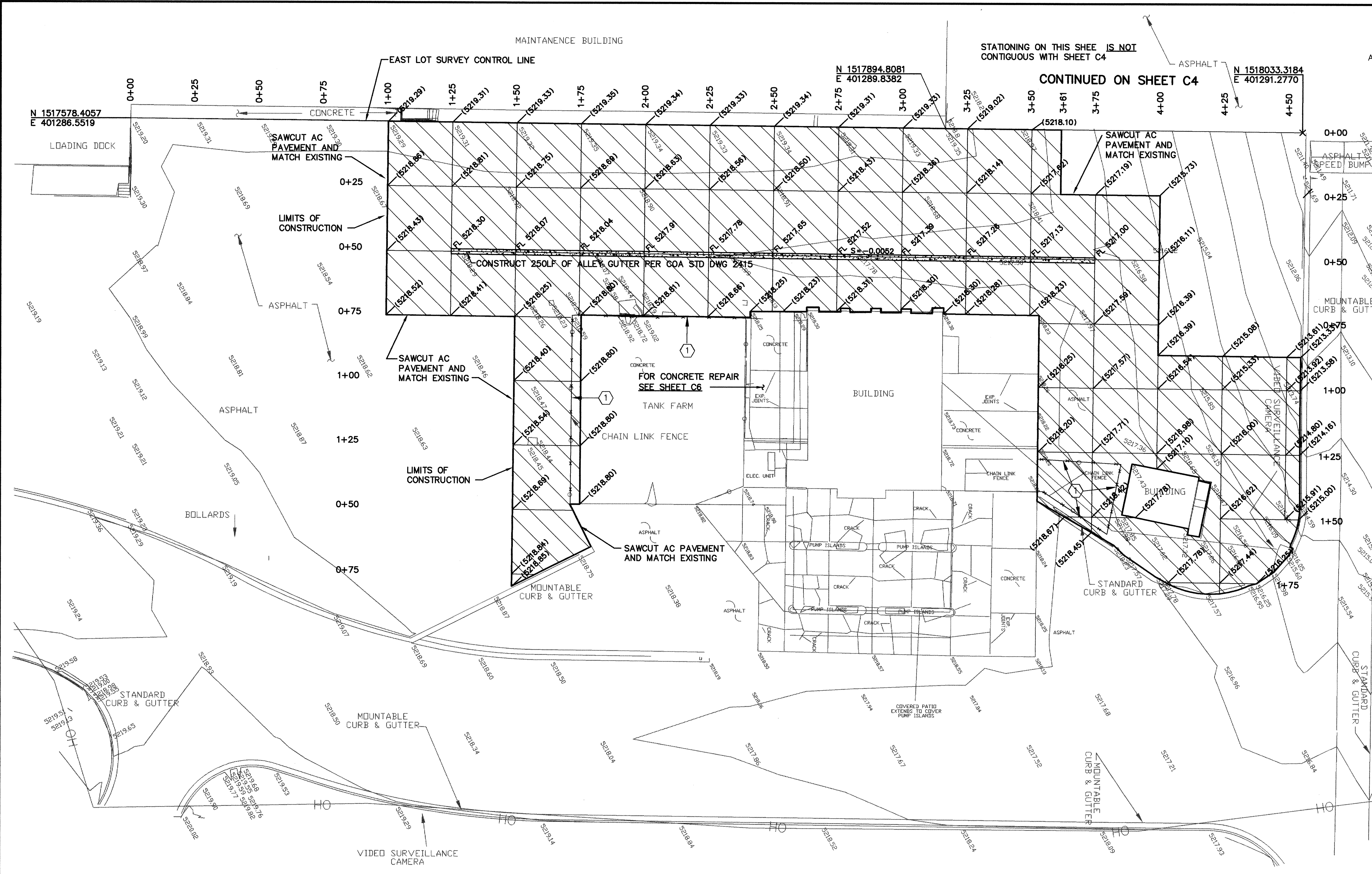
Design Review Committee
APPROVE
SEP 14 1995
DESIGN REVIEW COMMITTEE

City Engineer Approval
Last Design Update

Mo./Day/Yr. Mo./Day/Yr.

City Project No. 5281.90 Zone Map No. D-18 Sheet C4 Of 7

AS BUILT INFORMATION				BENCH MARKS				SURVEY INFORMATION				ENGINEER'S SEAL			
CONTRACTOR	DATE	INSPECTOR	DATE	THIS TOPOGRAPHIC SURVEY IS BASED ON	DATE	BY	NO.	FIELD NOTES	DATE	BY	NO.				
DATE	DATE	DATE	DATE	ALBUQUERQUE SURVEY MONUMENTS "11-25-14" AND "11-D18" SEE CITY OF ALBUQUERQUE SURVEY MONUMENTATION LOGS FOR EXACT LOCATION.	DATE	BY	NO.	REVISIONS	DATE	BY	NO.				
DATE	DATE	DATE	DATE					DESIGNED BY	DATE	BY	NO.	LEEDSHILL-HERKENHOFF, INC.			
DATE	DATE	DATE	DATE					DRAWN BY	DATE	BY	NO.				
DATE	DATE	DATE	DATE					CHECKED BY	DATE	BY	NO.	RA STOCKTON MO JENSEN TC BLAINE			
DATE	DATE	DATE	DATE												



EAST LOT PLAN
SCALE: 1" = 20'

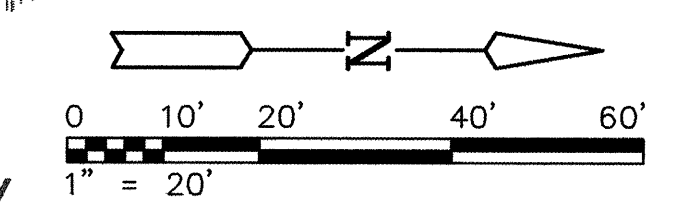
GENERAL NOTES

A REMOVE EXISTING AC PAVEMENT AND BASE TO LIMITS SHOWN. INSTALL 2" 1800 LB STABILITY GRADE B AC PAVEMENT ON 2" 1800 LB GRADE A STABILITY AC PAVEMENT ON A MINIMUM OF 4" BASE COURSE PER SPEC SECTIONS 112 AND 116.

KEYED NOTES

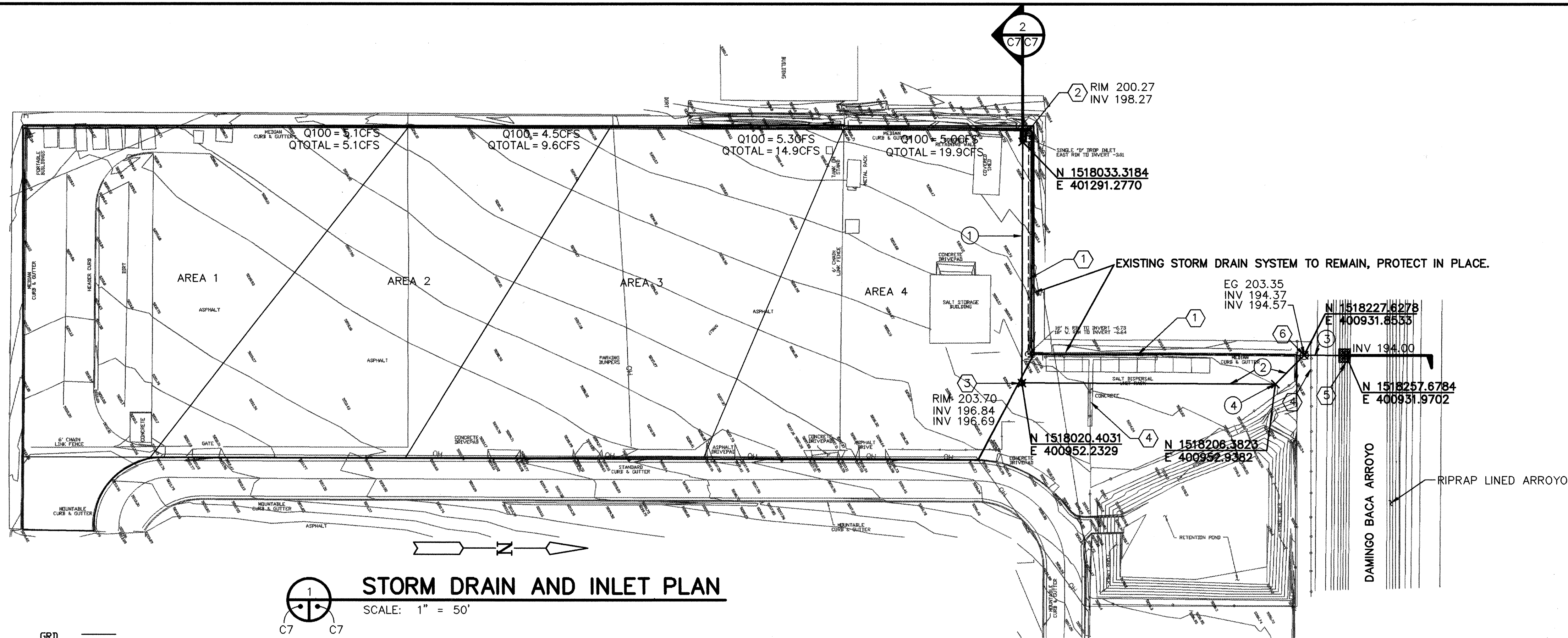
1 REMOVE 6' HIGH CHAIN LINK FENCE, SALVAGE AND REINSTALL AT EXISTING LOCATION

- LEGEND**
- AC REMOVAL AND REPLACEMENT
 - CONCRETE
- (9999.99) PROPOSED SPOT ELEVATION
- C.O.A. PROJECT CONTROL POINT OR A.C.S. MONUMENT DO NOT DISTURB
- ELECTRICAL PULL BOX
 - BOLLARD
 - PIPE
 - ELECTRIC TRANSFORMER
 - IRRIGATION CONTROL BOX
 - MANHOLE
 - DRAIN INLET
 - WATER VALVE
 - ELECTRICAL RISER
 - ENVIRONMENTAL TEST WELLS
 - GAS RISER
 - WATER RISER
 - 9999.99 SPOT ELEVATION AT TOP BACK OF C & G OR TOP OF ASPHALT
 - 9999.9 SUPPLEMENTAL POINT
 - RAILROAD TIE
 - WOOD STAKE
 - BUSH
 - LARGE TREE
 - POWER POLE (VIDEO SURVEILLANCE WHERE NOTED)
 - SIGN POST
 - SD - STORM DRAIN LINE
 - OH - OVERHEAD POWER LINE
 - SEWER CLEANOUT
 - CHAIN LINK FENCE
 - FIRE HYDRANT
 - POWER POLE W/LIGHT
 - CUT-OFF FENCE POSTS
 - +/- 1.0' ABOVE CONCRETE



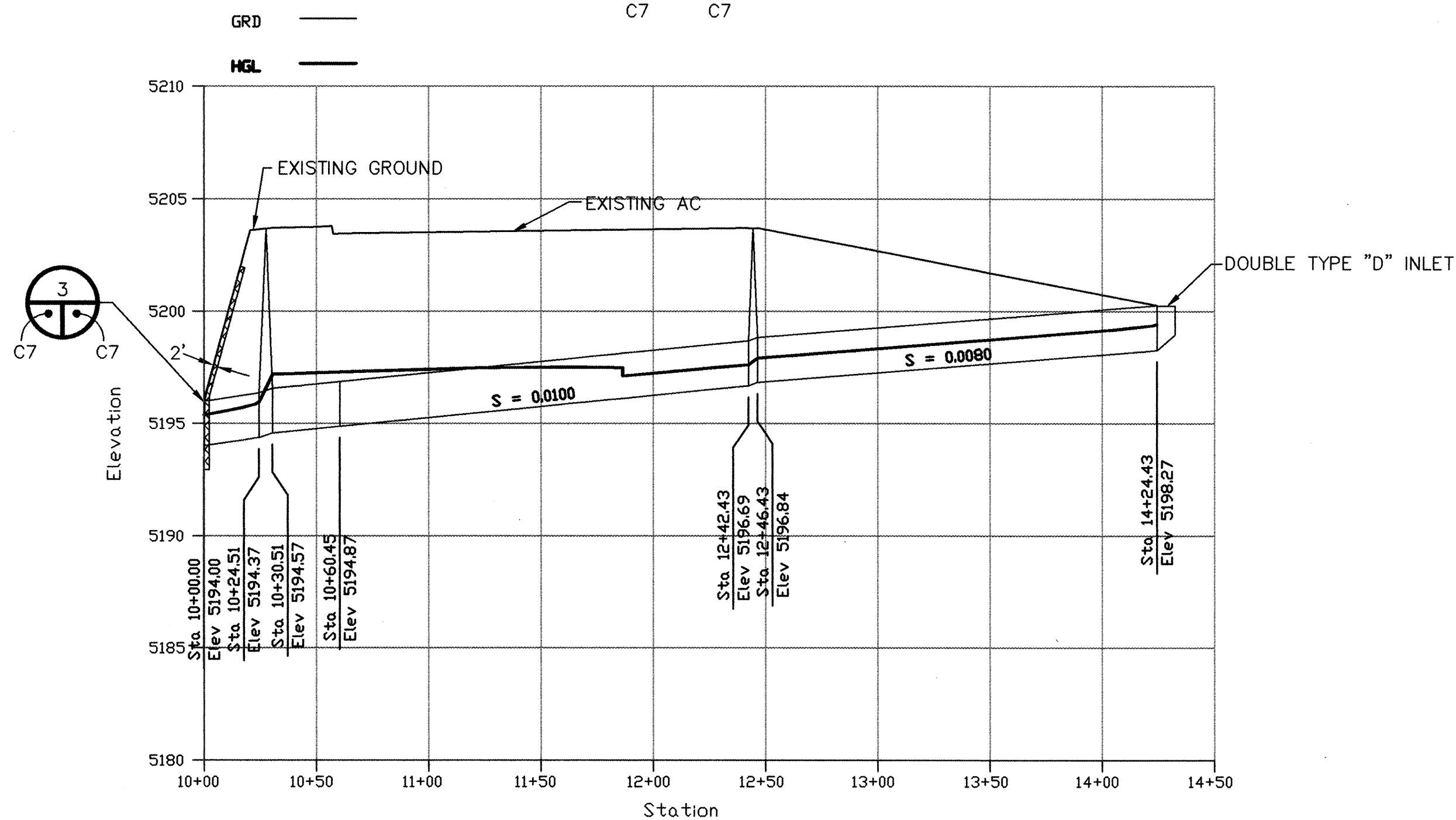
FOR INFORMATION ONLY

--	--	--	--	--	--	--	--	--	--	--	--	--	--	--	--	--	--	--	--	--	--	--	--	--	--	--	--	--	--	--	--	--	--	--	--	--	--	--	--	--	--	--	--	--	--	--	--	--	--	--	--	--	--	--	--	--	--	--	--	--	--	--	--	--	--	--	--	--	--	--	--	--	--	--	--	--	--	--	--	--	--	--	--	--	--	--	--	--	--	--	--	--	--	--	--	--	--	--	--	--	--	--	--	--	--	--	--	--	--	--	--	--	--	--	--	--	--	--	--	--	--	--	--	--	--	--	--	--	--	--	--	--	--	--	--	--	--	--	--	--	--	--	--	--	--	--	--	--	--	--	--	--	--	--	--	--	--	--	--	--	--	--	--	--	--	--	--	--	--	--	--	--	--	--	--	--	--	--	--	--	--	--	--	--	--	--	--	--	--	--	--	--	--	--	--	--	--	--	--	--	--	--	--	--	--	--	--	--	--	--	--	--	--	--	--	--	--	--	--	--	--	--	--	--	--	--	--	--	--	--	--	--	--	--	--	--	--	--	--	--	--	--	--	--	--	--	--	--	--	--	--	--	--	--	--	--	--	--	--	--	--	--	--	--	--	--	--	--	--	--	--	--	--	--	--	--	--	--	--	--	--	--	--	--	--	--	--	--	--	--	--	--	--	--	--	--	--	--	--	--	--	--	--	--	--	--	--	--	--	--	--	--	--	--	--	--	--	--	--	--	--	--	--	--	--	--	--	--	--	--	--	--	--	--	--	--	--	--	--	--	--	--	--	--	--	--	--	--	--	--	--	--	--	--	--	--	--	--	--	--	--	--	--	--	--	--	--	--	--	--	--	--	--	--	--	--	--	--	--	--	--	--	--	--	--	--	--	--	--	--	--	--	--	--	--	--	--	--	--	--	--	--	--	--	--	--	--	--	--	--	--	--	--	--	--	--	--	--	--	--	--	--	--	--	--	--	--	--	--	--	--	--	--	--	--	--	--	--	--	--	--	--	--	--	--	--	--	--	--	--	--	--	--	--	--	--	--	--	--	--	--	--	--	--	--	--	--	--	--	--	--	--	--	--	--	--	--	--	--	--	--	--	--	--	--	--	--	--	--	--	--	--	--	--	--	--	--	--	--	--	--	--	--	--	--	--	--	--	--	--	--	--	--	--	--	--	--	--	--	--	--	--	--	--	--	--	--	--	--	--	--	--	--	--	--	--	--	--	--	--	--	--	--	--	--	--	--	--	--	--	--	--	--	--	--	--	--	--	--	--	--	--	--	--	--	--	--	--	--	--	--	--	--	--	--	--	--	--	--	--	--	--	--	--	--	--	--	--	--	--	--	--	--	--	--	--	--	--	--	--	--	--	--	--	--	--	--	--	--	--	--	--	--	--	--	--	--	--	--	--	--	--	--	--	--	--	--	--	--	--	--	--	--	--	--	--	--	--	--	--	--	--	--	--	--	--	--	--	--	--	--	--	--	--	--	--	--	--	--	--	--	--	--	--	--	--	--	--	--	--	--	--	--	--	--	--	--	--	--	--	--	--	--	--	--	--	--	--	--	--	--	--	--	--	--	--	--	--	--	--	--	--	--	--	--	--	--	--	--	--	--	--	--	--	--	--	--	--	--	--	--	--	--	--	--	--	--	--	--	--	--	--	--	--	--	--	--	--	--	--	--	--	--	--	--	--	--	--	--	--	--	--	--	--	--	--	--	--	--	--	--	--	--	--	--	--	--	--	--	--	--	--	--	--	--	--	--	--	--	--	--	--	--	--	--	--	--	--	--	--	--	--	--	--	--	--	--	--	--	--	--	--	--	--	--	--	--	--	--	--	--	--	--	--	--	--	--	--	--	--	--	--	--	--	--	--	--	--	--	--	--	--	--	--	--	--	--	--	--	--	--	--	--	--	--	--	--	--	--	--	--	--	--	--	--	--	--	--	--	--	--	--	--	--	--	--	--	--	--	--	--	--	--	--	--	--	--	--	--	--	--	--	--	--	--	--	--	--	--	--	--	--	--	--	--	--	--	--	--	--	--	--	--	--	--	--	--	--	--	--	--	--	--	--	--	--	--	--	--	--	--	--	--	--	--	--	--	--	--	--	--	--	--	--	--	--	--	--	--	--	--	--	--	--	--	--	--	--	--	--	--	--	--	--	--	--	--	--	--	--	--	--	--	--	--	--	--	--	--	--	--	--	--	--	--	--	--	--	--	--	--	--	--	--	--	--	--	--	--	--	--	--	--	--	--	--	--	--	--	--	--	--	--	--	--	--	--	--	--	--	--	--	--	--	--	--	--	--	--	--	--	--	--	--	--	--	--	--	--	--	--	--	--	--	--	--	--	--	--	--	--	--	--	--	--	--	--	--	--	--	--	--	--	--	--	--	--	--	--	--	--	--	--	--	--	--	--	--	--	--	--	--	--	--	--	--	--	--	--	--	--	--	--	--	--	--	--	--	--	--	--	--	--	--	--	--	--	--	--	--	--	--	--	--	--	--	--	--	--	--	--	--	--	--	--	--	--	--	--	--	--	--	--	--	--	--	--	--	--	--	--	--	--	--	--	--	--	--	--	--	--	--	--	--	--	--	--	--	--	--	--	--	--	--	--	--	--	--	--	--	--	--	--	--	--	--	--	--	--	--	--	--	--	--	--	--	--	--	--	--	--	--	--	--	--	--	--	--	--	--	--	--	--	--	--	--	--	--	--	--	--	--	--	--	--	--	--	--	--	--	--	--	--	--	--	--	--	--	--	--	--	--	--	--	--	--	--	--	--	--	--	--	--	--	--	--	--	--	--	--	--	--	--	--	--	--	--	--	--	--	--	--	--	--	--	--	--	--	--	--	--	--	--	--	--	--	--	--	--	--	--	--	--	--	--	--	--	--	--	--	--	--	--	--	--	--	--	--	--	--	--	--	--	--	--	--	--	--	--	--	--	--	--	--	--	--	--	--	--	--	--	--	--	--	--	--	--	--	--	--	--	--	--	--	--	--	--	--	--	--	--	--	--	--	--	--	--	--	--	--	--	--	--	--	--	--	--	--	--	--	--	--	--	--	--	--	--	--	--	--	--	--	--	--	--	--



STORM DRAIN AND INLET PLAN

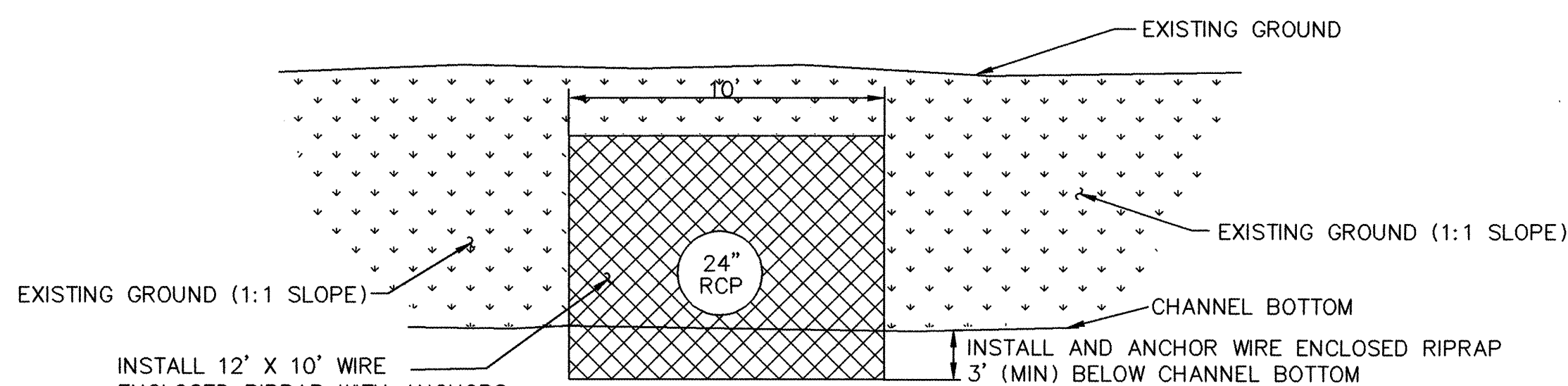
SCALE: 1" = 50'



STORM DRAIN AND INLET PROFILE

SCALE: HORIZ: 1" = 50'

VERT: 1" = 5'



STORM DRAIN OUTLET DETAIL

SCALE: NONE

COA/HYDROLOGY DRAINAGE CALCS

File: PINO_HYD.WK1

Project: PINO YARDS DRAINAGE AND PAVEMENT IMPROVEMENTS

Date: 05-Jul-95

Precipitation Zone (Enter 1-4 from Table A-1): 3

Design Storm Event (Enter 2, 10, or 100): 100

Basin #	Treatment	Existing			Proposed			Subtotal	
		Area (SF)	Area (AC)	Qp (CFS)	Area (SF)	Area (AC)	Qp (CFS)	Existing	Proposed
1	A	0	0.0	0.0	0	0.0	0.0		
	B	0	0.0	0.0	0	0.0	0.0		
	C	4,544	0.1	0.3	4,544	0.1	0.3		
	D	40,895	0.9	4.7	40,895	0.9	4.7	5.1	5.1
2	A	0	0.0	0.0	0	0.0	0.0		
	B	0	0.0	0.0	0	0.0	0.0		
	C	4,072	0.1	0.3	4,072	0.1	0.3		
	D	36,648	0.8	4.2	36,648	0.8	4.2	4.5	4.5
3	A	0	0.0	0.0	0	0.0	0.0		
	B	0	0.0	0.0	0	0.0	0.0		
	C	4,728	0.1	0.4	4,728	0.1	0.4		
	D	42,549	1.0	4.9	42,549	1.0	4.9	5.3	5.3
4	A	0	0.0	0.0	0	0.0	0.0		
	B	0	0.0	0.0	0	0.0	0.0		
	C	4,439	0.1	0.3	4,439	0.1	0.3		
	D	39,953	0.9	4.6	39,953	0.9	4.6	5.0	5.0
TOTALS		177,828	4.1	19.9	177,828	4.1	19.9	19.9	19.9

HYDROLOGIC CALCULATIONS

INLET CAPACITY: 1-SINGLE TYPE "D" (EXISTING) AREA OF GRATE OPENING: 2.02 SF
1-DOUBLE TYPE "D" (PROPOSED) AREA OF GRATE OPENING: 4.04 SF
TOTAL AREA: 6.06 SF

HEIGHT OF Q100 ABOVE GRATE (NO CLOGGING)

$$H = \left[\frac{Q}{CA} \right]^2 \cdot \frac{1}{2g} = 0.45'$$

WHERE: Q=19.9 CFS
C=0.61
A=6.06 SF FT

INLET HYDRAULIC CALCULATIONS

GENERAL NOTES

- A SAWCUT AND REMOVE EXISTING AC PAVEMENT AND EXCAVATE PER RESIDENTIAL STREETS TRENCH DETAIL COA STD DWG 2465. INSTALL 2" 1800 LB STABILITY GRADE B AC PAVEMENT ON 2" 1800 LB GRADE A STABILITY AC PAVEMENT ON A MINIMUM OF 4" BASE COURSE PER SPEC SECTIONS 112 AND 116.

KEYED NOTES

- EXISTING 18" RCP WITH 48" MANHOLE AND SINGLE TYPE "D" INLET
- CONSTRUCT A DOUBLE TYPE "D" INLET WITH A TOP OF GRATE ELEVATION 5200.27 AND AN INVERT OF 5198.27, COA STD DWG 2206
- CONSTRUCT A 48" TYPE C MANHOLE WITH A RIM ELEVATION 5203.70, AND INVERT IN 5196.84, INVERT OUT 5196.69, COA STD DWG 2101
- REMOVE 6' HIGH CHAIN LINK FENCE, SALVAGE AND REINSTALL AT EXISTING LOCATION
- REMOVE 24' OF EXISTING 18"RCP AND INSTALL 30' 24"RCP WITH 12' X 10' WIRE ENCLOSED RIPRAP WITH ANCHORS PER COA STD DWG 2270
- INSTALL 6' DIA MANHOLE

PIPING SCHEDULE

- 178 LF 18" RCP
- 210 LF 24" RCP
- 30 LF 24" RCP
- 6 LF, 45 DEG BEND, 24" RCP

LEGEND

- (9999.99) PROPOSED SPOT ELEVATION
C.O.A. PROJECT CONTROL POINT OR A.C.S. MONUMENT DO NOT DISTURB
ELECTRICAL PULL BOX
BOLLARD
PIPE
ELECTRIC TRANSFORMER
IRRIGATION CONTROL BOX
MANHOLE
DRAIN INLET
WATER VALVE
ELECTRICAL RISER
1 ENVIRONMENTAL TEST WELLS
GAS RISER
WATER RISER
- 9999.99 SPOT ELEVATION AT TOP BACK OF C & G OR TOP OF ASPHALT
9999.9 SPOT ELEVATION ON NATURAL GROUND
SUPPLEMENTAL POINT
RAILROAD TIE
WOOD STAKE
BUSH
LARGE TREE
POWER POLE (VIDEO SURVEILLANCE WHERE NOTED)
SIGN POST
- SD - STORM DRAIN LINE
- OH - OVERHEAD POWER LINE
SEWER CLEANOUT
CHAIN LINK FENCE
FIRE HYDRANT
POWER POLE W/LIGHT
CUT-OFF FENCE POSTS
+/- 1.0' ABOVE CONCRETE

FOR INFORMATION ONLY

LEEDSHILL-HERKENHOFF, INC.
500 Copper Avenue NW
P.O. Box 1217
Albuquerque, NM 87103
(505)247-0294

CITY OF ALBUQUERQUE
PUBLIC WORKS DEPARTMENT
PARKS AND GENERAL SERVICES

TITLE: PINO YARDS DRAINAGE AND PAVEMENT IMPROVEMENTS
STORM DRAIN AND INLET
PLAN AND PROFILE

Design Review Committee APPROVED SEP 14 1995 DESIGN REVIEW COMMITTEE	City Engineer Approval	Mo./Day/Yr.	Mo./Day/Yr.
City Project No. 5281.90	Zone Map No. D-18	Sheet C7	Of 7

AS BUILT INFORMATION				BENCH MARKS				SURVEY INFORMATION				ENGINEER'S SEAL			
CONTRACTOR	DATE	DATE	DATE	THIS TOPOGRAPHIC SURVEY IS BASED ON	DATE	BY	NO.	DATE	BY	NO.	REMARKS	DATE	BY	NO.	REMARKS
WORK STAKED BY	DATE	DATE	DATE	ALBUQUERQUE SURVEY MONUMENTS "1-25-14" AND "11-D18". SEE CITY OF ALBUQUERQUE SURVEY MONUMENTATION LOGS FOR EXACT LOCATION.	DATE	BY	NO.	DATE	BY	NO.	REMARKS	DATE	BY	NO.	REMARKS
APPROVED BY	DATE	DATE	DATE		DATE	BY	NO.	DATE	BY	NO.	REMARKS	DATE	BY	NO.	REMARKS
DRAWN BY	DATE	DATE	DATE		DATE	BY	NO.	DATE	BY	NO.	REMARKS	DATE	BY	NO.	REMARKS
CHECKED BY	DATE	DATE	DATE		DATE	BY	NO.	DATE	BY	NO.	REMARKS	DATE	BY	NO.	REMARKS
RECORDED BY	DATE	DATE	DATE		DATE	BY	NO.	DATE	BY	NO.	REMARKS	DATE	BY	NO.	REMARKS
NO.	DATE	DATE	DATE		DATE	BY	NO.	DATE	BY	NO.	REMARKS	DATE	BY	NO.	REMARKS