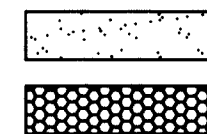


LEGEND

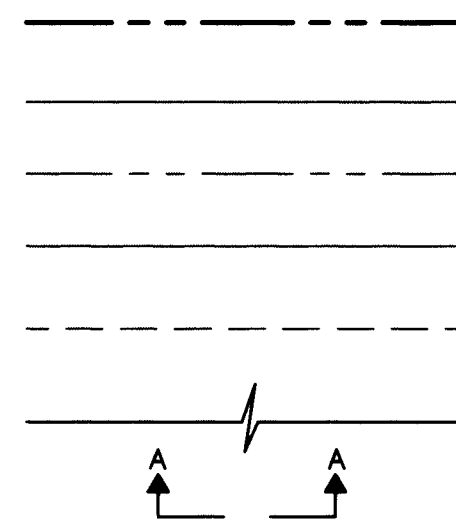
MATERIALS

CONCRETE
RIP-RAP



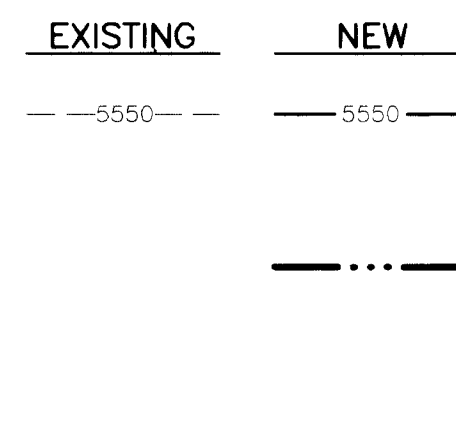
LINES

SUBDIVISION BOUNDARY
PROPERTY LINE (PLAN)
PROPERTY LINE (SECTION)
CENTERLINE
EASEMENT LINE
MATCH LINE
SECTION CUT LINE



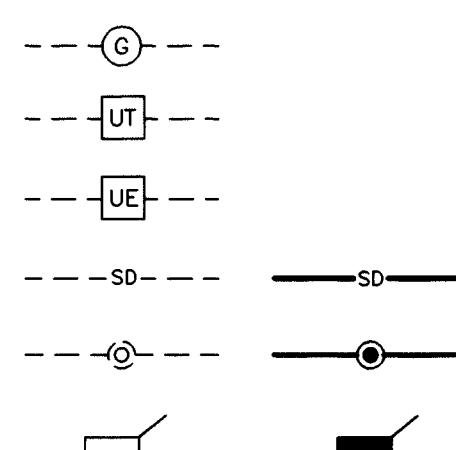
EARTHWORK

CONTOUR LINE
SPOT ELEVATION
PROJECT / PHASE BOUNDARY
SWALE
DIRECTION OF FLOW



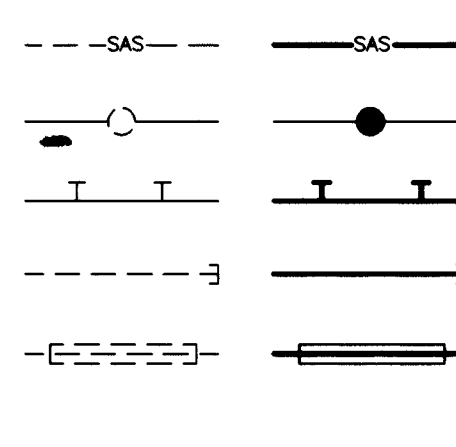
MISCELLANEOUS UTILITIES

GAS LINE
UNDERGROUND TELEPHONE
UNDERGROUND ELECTRICAL
STORM DRAIN
STORM DRAIN MANHOLE
STORM DRAIN INLET



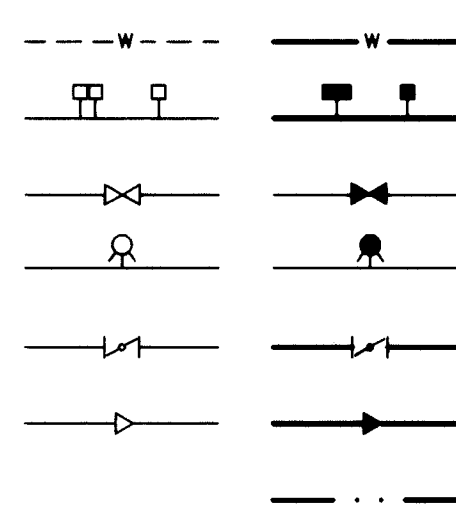
SANITARY SEWER

SANITARY SEWER LINE
SANITARY SEWER MANHOLE
SAS SERVICE CONNECTIONS
SAS CAP OR PLUG
ENCASEMENT
SAS CLEANOUT



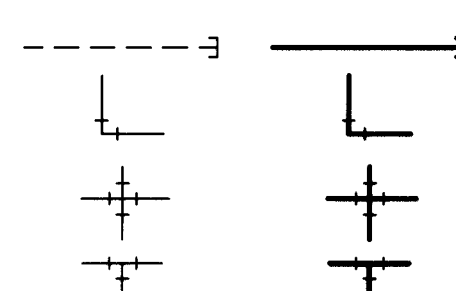
WATER

WATER LINE
WATER SERVICE CONNECTIONS
GATE VALVE
FIRE HYDRANT
BUTTERFLY VALVE
REDUCER
WATER PRESSURE ZONE BOUNDARY



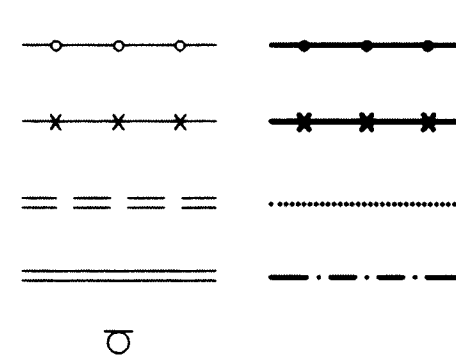
WATER FITTINGS

CAPS AND PLUGS
ELBOW
CROSS
TEE



MISCELLANEOUS

CHAINLINK FENCE
FIELD FENCE
COMMON YARD WALL
RETAINING WALL
POWER OR TELEPHONE POLE



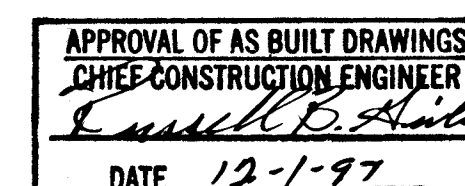
CONSTRUCTION PLANS FOR GLENRIDGE PARK

ALBUQUERQUE, NEW MEXICO

MARCH, 1996

INDEX OF DRAWINGS

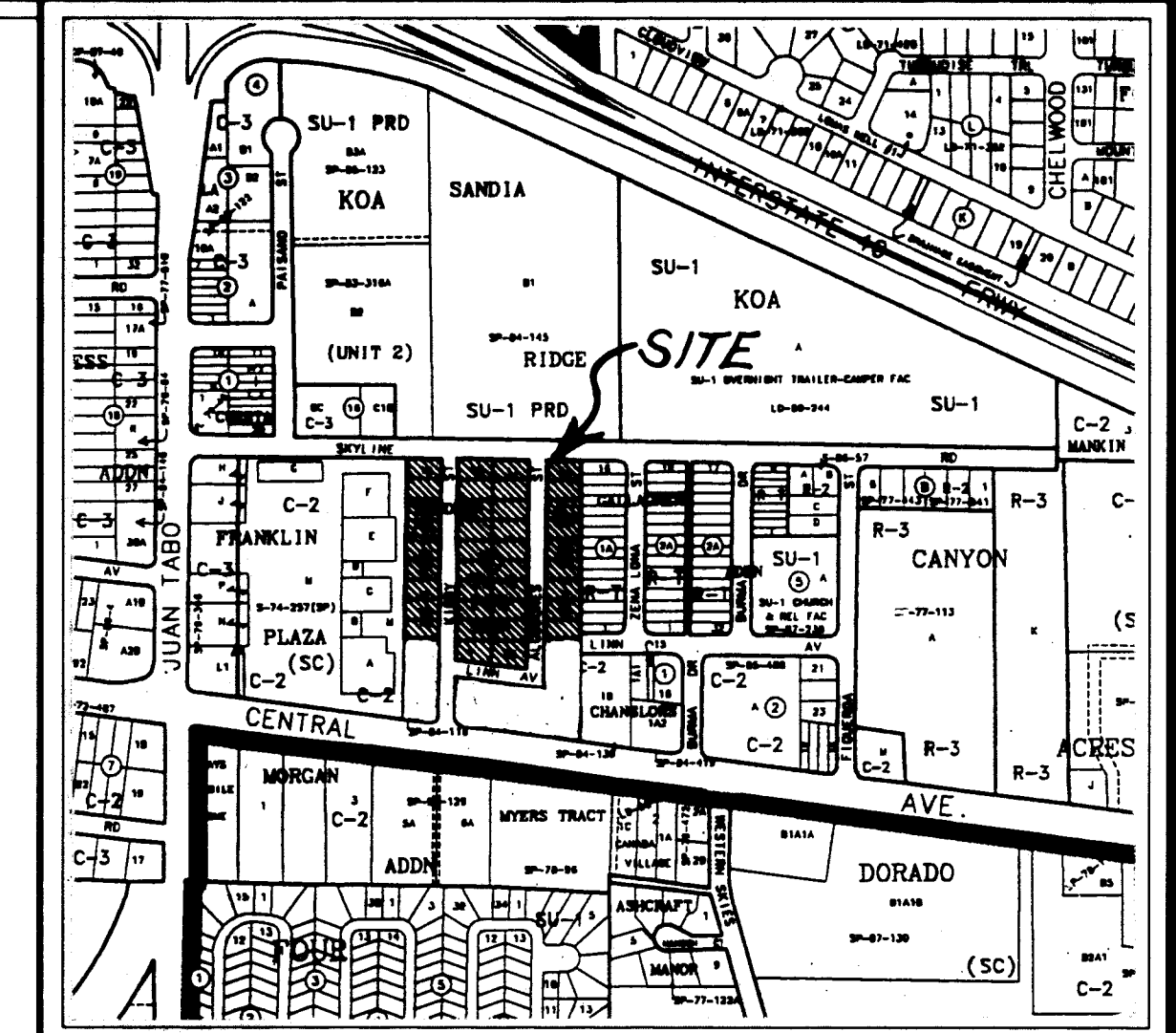
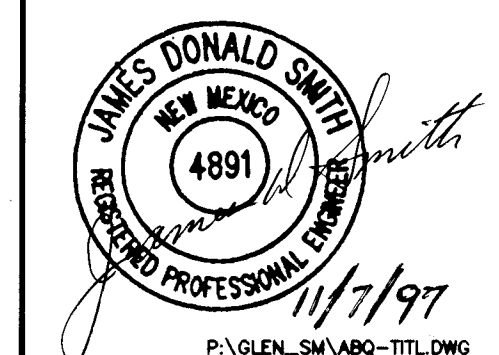
- COVER SHEET, VICINITY MAP, GENERAL NOTES, LEGEND & INDEX OF DRAWINGS
- SUBDIVISION PLAT
- SITE PLAN, PAVING, WATER, SAS IMPROVEMENTS & WATER SHUTOFF PLAN
- GRADING & DRAINAGE PLAN
- STORM DRAIN IMPROVEMENTS SKYLINE ROAD
- PAVING, SAS, WATER & STORM DRAIN IMPROVEMENTS GLENRIDGE PARK LANE
- PAVING, SAS, WATER & STORM DRAIN IMPROVEMENTS LINN WAY & HENDREN LANE
- STORM DRAIN IMPROVEMENTS DETENTION SYSTEM
- SECTIONS & DETAILS
- SECTIONS & DETAILS



CAUTION:

THESE DRAWINGS DO NOT INCLUDE NECESSARY COMPONENTS FOR CONSTRUCTION SAFETY WHICH SHALL REMAIN THE RESPONSIBILITY OF THE CONTRACTOR.

AS-BUILT PLAN SET



VICINITY MAP (ZONE MAP NO. L-22)
NOT TO SCALE.

GENERAL NOTES

- ALL WORK DETAILED ON THESE PLANS TO BE PERFORMED UNDER CONTRACT SHALL, EXCEPT AS OTHERWISE STATED OR PROVIDED FOR HEREON, BE CONSTRUCTED IN ACCORDANCE WITH THE CITY OF ALBUQUERQUE STANDARD SPECIFICATIONS FOR PUBLIC WORKS CONSTRUCTION - 1986 (STANDARD SPECIFICATIONS), AS AMENDED THROUGH UPDATE #6.
- TWO (2) WORKING DAYS PRIOR TO CONSTRUCTION THE CONTRACTOR SHALL CONTACT NEW MEXICO ONE CALL SYSTEM, LOCAL 260-1990, TO LOCATE EXISTING UTILITIES.
- THREE (3) WORKING DAYS PRIOR TO CONSTRUCTION THE CONTRACTOR SHALL SUBMIT TO THE CONSTRUCTION COORDINATION DIVISION A DETAILED CONSTRUCTION SCHEDULE. TWO (2) WORKING DAYS PRIOR TO CONSTRUCTION THE CONTRACTOR SHALL OBTAIN A BARRICADING PERMIT FROM THE CONSTRUCTION COORDINATION DIVISION. CONTRACTOR SHALL NOTIFY THE BARRICADING ENGINEER (768-2552) PRIOR TO OCCUPYING ANY INTERSECTION.
- TRAFFIC CONTROL SHALL BE THE RESPONSIBILITY OF THE CONTRACTOR AND COMPLY WITH SECTION 19 OF THE STANDARD SPECIFICATIONS.
- SEVERAL EXISTING UTILITIES WILL NEED TO BE ACCESSED FOR THIS PROJECT. PRIOR TO THE INSTALLATION OF ANY UNDERGROUND UTILITIES, THE CONTRACTOR SHALL EXCAVATE AND VERIFY THE HORIZONTAL AND VERTICAL LOCATION OF THE EXISTING UTILITIES. SHOULD A CONFLICT EXIST BETWEEN THESE PLANS AND THE OBSERVED FIELD CONDITIONS, THE CONTRACTOR SHALL PROMPTLY NOTIFY THE ENGINEER AND OWNER IN WRITING SO THAT THE CONFLICT CAN BE RESOLVED WITH A MINIMUM DELAY FOR ALL PARTIES.
- CONTRACTOR SHALL BE RESPONSIBLE FOR MAINTAINING THE WORK AREA (TRENCHES, EXCAVATIONS, HEAVY EQUIPMENT) IN A SAFE CONDITION; THEREBY PROTECTING THE WORKERS AND THE GENERAL PUBLIC. TRENCH SLOPES AND OTHER PROTECTION SHALL CONFORM TO LOCAL, STATE AND OSHA REGULATIONS. WHERE A CONFLICT BETWEEN REGULATIONS EXIST, THE MOST STRINGENT WILL APPLY.
- CONTRACTOR SHALL MAINTAIN ACCESS TO ADJACENT PROPERTIES DURING CONSTRUCTION.
- ALL UTILITIES AND UTILITY SERVICES SHALL BE INSTALLED PRIOR TO PAVING.
- ALL STREET STRIPING ALTERED OR DESTROYED BY THE CONTRACTOR SHALL BE REPLACED TO THE PRECONSTRUCTION CONDITION AT THE CONTRACTOR'S EXPENSE. ANY PERMANENT SURVEY MONUMENTS DISTURBED DUE TO IMPROPER REFERENCE ON THE PLANS SHALL BE REPLACED BY CITY SURVEY SECTION AT DESIGNER EXPENSE.
- CONTRACTOR SHALL NOT DISTURB PERMANENT SURVEY MONUMENTS WITHOUT CONSENT OF THE ENGINEER OR OWNER. ANY DISTURBED MONUMENTS SHALL BE REPLACED BY THE CITY SURVEY SECTION AT THE CONTRACTOR'S EXPENSE.
- ANY WORK AFFECTING AN ARTERIAL ROADWAY REQUIRES 24 HOUR CONSTRUCTION.
- EXISTING CITY FACILITIES DAMAGED DURING CONSTRUCTION SHALL BE REPLACED BY CONTRACTOR.

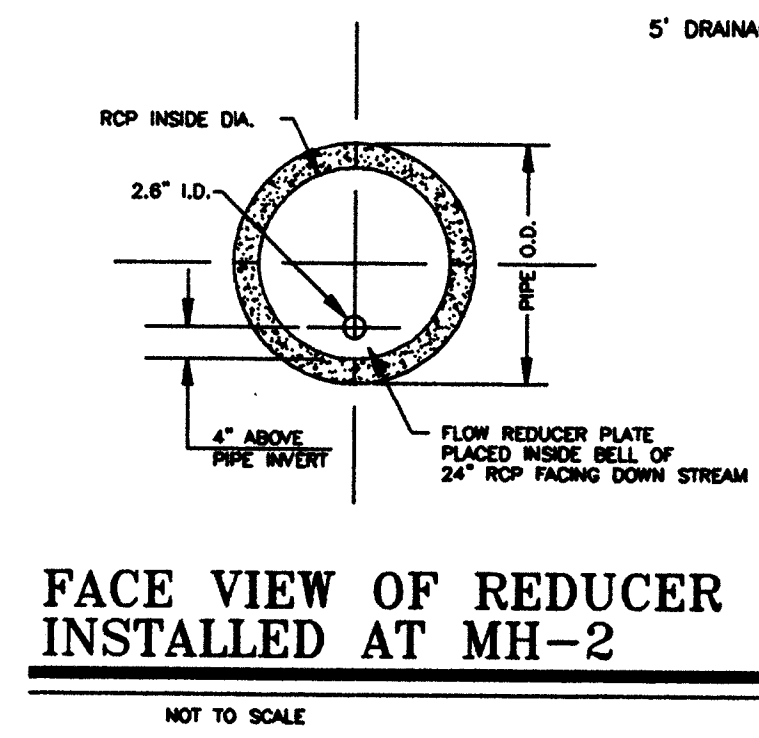
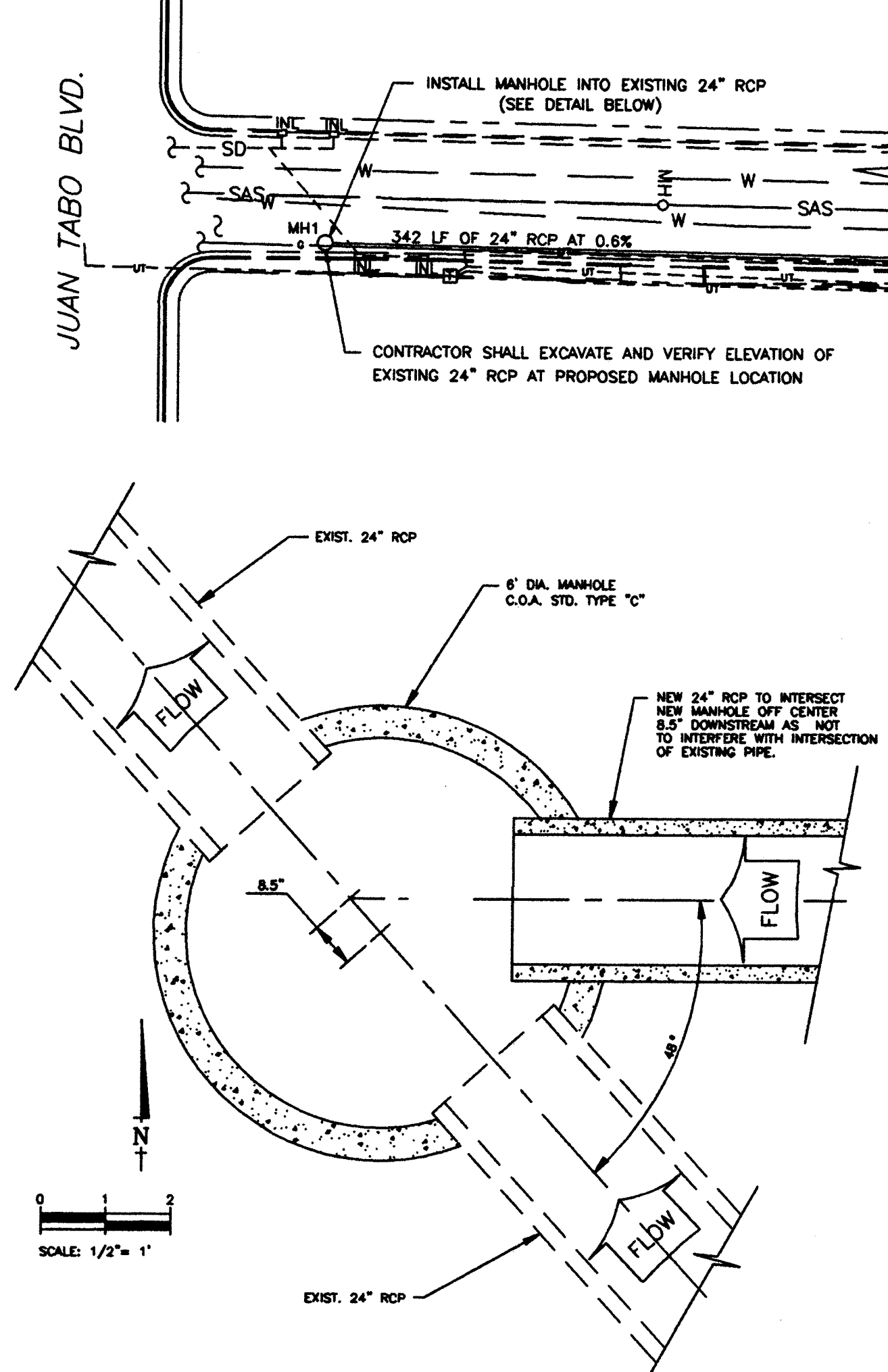
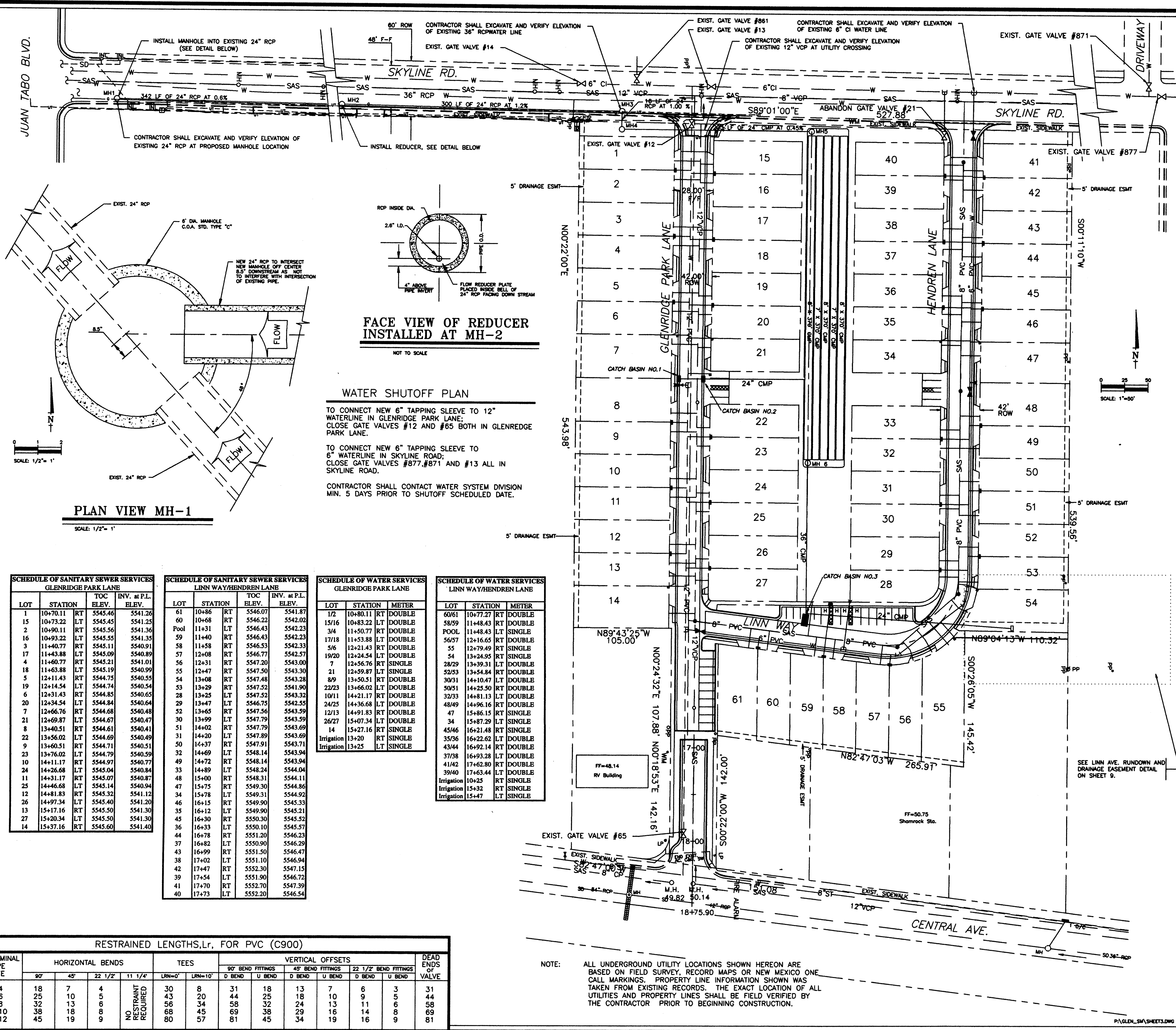
26 541081 0197

DRB CASE NO. 95 - 358
SUBDIVISION NO. 95 - 36
VACATION NO. 95 - 96
PRELIMINARY PLAT APPROVAL: MARCH 5, 1996

SOUDER, MILLER & ASSOCIATES
CIVIL ENVIRONMENTAL SCIENTISTS & ENGINEERS
1201 Parkway Dr., Suite C • Santa Fe, NM 87505
(505) 473-9211 FAX (505) 471-6675

--	--	--	--	--	--	--	--	--	--	--	--	--	--	--	--	--	--	--	--	--	--	--	--	--	--	--	--	--	--	--	--	--	--	--	--	--	--	--	--	--	--	--	--	--	--	--	--	--	--	--	--	--	--	--	--	--	--	--	--	--	--	--	--	--	--	--	--	--	--	--	--	--	--	--	--	--	--	--	--	--	--	--	--	--	--	--	--	--	--	--	--	--	--	--	--	--	--	--	--	--	--	--	--	--	--	--	--	--	--	--	--	--	--	--	--	--	--	--	--	--	--	--	--	--	--	--	--	--	--	--	--	--	--	--	--	--	--	--	--	--	--	--	--	--	--	--	--	--	--	--	--	--	--	--	--	--	--	--	--	--	--	--	--	--	--	--	--	--	--	--	--	--	--	--	--	--	--	--	--	--	--	--	--	--	--	--	--	--	--	--	--	--	--	--	--	--	--	--	--	--	--	--	--	--	--	--	--	--	--	--	--	--	--	--	--	--	--	--	--	--	--	--	--	--	--	--	--	--	--	--	--	--	--	--	--	--	--	--	--	--	--	--	--	--	--	--	--	--	--	--	--	--	--	--	--	--	--	--	--	--	--	--	--	--	--	--	--	--	--	--	--	--	--	--	--	--	--	--	--	--	--	--	--	--	--	--	--	--	--	--	--	--	--	--	--	--	--	--	--	--	--	--	--	--	--	--	--	--	--	--	--	--	--	--	--	--	--	--	--	--	--	--	--	--	--	--	--	--	--	--	--	--	--	--	--	--	--	--	--	--	--	--	--	--	--	--	--	--	--	--	--	--	--	--	--	--	--	--	--	--	--	--	--	--	--	--	--	--	--	--	--	--	--	--	--	--	--	--	--	--	--	--	--	--	--	--	--	--	--	--	--	--	--	--	--	--	--	--	--	--	--	--	--	--	--	--	--	--	--	--	--	--	--	--	--	--	--	--	--	--	--	--	--	--	--	--	--	--	--	--	--	--	--	--	--	--	--	--	--	--	--	--	--	--	--	--	--	--	--	--	--	--	--	--	--	--	--	--	--	--	--	--	--	--	--	--	--	--	--	--	--	--	--	--	--	--	--	--	--	--	--	--	--	--	--	--	--	--	--	--	--	--	--	--	--	--	--	--	--	--	--	--	--	--	--	--	--	--	--	--	--	--	--	--	--	--	--	--	--	--	--	--	--	--	--	--	--	--	--	--	--	--	--	--	--	--	--	--	--	--	--	--	--	--	--	--	--	--	--	--	--	--	--	--	--	--	--	--	--	--	--	--	--	--	--	--	--	--	--	--	--	--	--	--	--	--	--	--	--	--	--	--	--	--	--	--	--	--	--	--	--	--	--	--	--	--	--	--	--	--	--	--	--	--	--	--	--	--	--	--	--	--	--	--	--	--	--	--	--	--	--	--	--	--	--	--	--	--	--	--	--	--	--	--	--	--	--	--	--	--	--	--	--	--	--	--	--	--	--	--	--	--	--	--	--	--	--	--	--	--	--	--	--	--	--	--	--	--	--	--	--	--	--	--	--	--	--	--	--	--	--	--	--	--	--	--	--	--	--	--	--	--	--	--	--	--	--	--	--	--	--	--	--	--	--	--	--	--	--	--	--	--	--	--	--	--	--	--	--	--	--	--	--	--	--	--	--	--	--	--	--	--	--	--	--	--	--	--	--	--	--	--	--	--	--	--	--	--	--	--	--	--	--	--	--	--	--	--	--	--	--	--	--	--	--	--	--	--	--	--	--	--	--	--	--	--	--	--	--	--	--	--	--	--	--	--	--	--	--	--	--	--	--	--	--	--	--	--	--	--	--	--	--	--	--	--	--	--	--	--	--	--	--	--	--	--	--	--	--	--	--	--	--	--	--	--	--	--	--	--	--	--	--	--	--	--	--	--	--	--	--	--	--	--	--	--	--	--	--	--	--	--	--	--	--	--	--	--	--	--	--	--	--	--	--	--	--	--	--	--	--	--	--	--	--	--	--	--	--	--	--	--	--	--	--	--	--	--	--	--	--	--	--	--	--	--	--	--	--	--	--	--	--	--	--	--	--	--	--	--	--	--	--	--	--	--	--	--	--	--	--	--	--	--	--	--	--	--	--	--	--	--	--	--	--	--	--	--	--	--	--	--	--	--	--	--	--	--	--	--	--	--	--	--	--	--	--	--	--	--	--	--	--	--	--	--	--	--	--	--	--	--	--	--	--	--	--	--	--	--	--	--	--	--	--	--	--	--	--	--	--	--	--	--	--	--	--	--	--	--	--	--	--	--	--	--	--	--	--	--	--	--	--	--	--	--	--	--	--	--	--	--	--	--	--	--	--	--	--	--	--	--	--	--	--	--	--	--	--	--	--	--	--	--	--	--	--	--	--	--	--	--	--	--	--	--	--	--	--	--	--	--	--	--	--	--	--	--	--	--	--	--	--	--	--	--	--	--	--	--	--	--	--	--	--	--	--	--	--	--	--	--	--	--	--	--	--	--	--	--	--	--	--	--	--	--	--	--	--	--	--	--	--	--	--	--	--	--	--	--	--	--	--	--	--	--	--	--	--	--	--	--	--	--	--	--	--	--	--	--	--	--	--	--	--	--	--	--	--	--	--	--	--	--	--	--	--	--	--	--	--	--	--	--	--	--	--	--	--	--	--	--	--	--	--	--	--	--	--	--	--	--	--	--	--	--	--	--	--	--	--	--	--	--	--	--	--	--	--	--	--	--	--	--	--	--	--	--	--	--	--	--	--	--	--	--	--	--	--	--	--	--	--	--	--	--	--	--	--	--	--	--	--	--	--	--	--	--	--	--	--	--	--	--	--	--	--	--	--	--	--	--	--	--	--	--	--	--	--	--	--	--	--	--	--	--	--	--	--	--	--	--	--	--	--	--	--	--	--	--	--	--	--	--	--	--	--	--	--	--	--	--	--	--	--	--	--	--	--	--	--	--	--	--	--	--	--	--	--	--	--	--	--	--	--	--	--	--	--	--	--	--	--	--	--	--	--	--	--	--	--	--	--	--	--	--	--	--	--	--	--	--	--	--	--	--	--	--	--	--	--	--	--	--	--	--	--	--	--	--	--	--	--	--	--	--	--	--	--	--	--	--	--	--	--	--	--	--	--	--	--	--	--	--	--	--	--	--	--	--	--	--	--	--	--	--	--	--	--	--	--	--	--	--	--	--	--	--	--	--	--	--	--	--	--	--	--	--	--	--	--	--	--	--	--	--	--	--	--	--	--	--	--	--	--	--	--	--	--	--	--	--	--	--	--	--	--	--	--	--	--	--	--	--	--	--	--	--	--	--	--	--	--	--	--	--	--	--	--	--	--	--	--	--	--	--	--	--	--	--	--

SCANNED BY
BY LASON



WATER SHUTOFF PLAN

TO CONNECT NEW 6" TAPPING SLEEVE TO 12" WATERLINE IN GLENRIDGE PARK LANE; CLOSE GATE VALVES #12 AND #65 BOTH IN GLENRIDGE PARK LANE.

TO CONNECT NEW 6" TAPPING SLEEVE TO 6" WATERLINE IN SKYLINE ROAD; CLOSE GATE VALVES #877, #871 AND #13 ALL IN SKYLINE ROAD.

CONTRACTOR SHALL CONTACT WATER SYSTEM DIVISION MIN. 5 DAYS PRIOR TO SHUTOFF SCHEDULED DATE.

SCHEDULE OF SANITARY SEWER SERVICES					SCHEDULE OF SANITARY SEWER SERVICES					SCHEDULE OF WATER SERVICES					SCHEDULE OF WATER SERVICES				
GLENRIDGE PARK LANE					LINN WAY/HENDREN LANE					GLENRIDGE PARK LANE					LINN WAY/HENDREN LANE				
LOT	STATION	TOC ELEV.	INV. at P.L. ELEV.		LOT	STATION	TOC ELEV.	INV. at P.L. ELEV.		LOT	STATION	METER			LOT	STATION	METER		
1	10+70.11	RT	5545.46	5541.26	61	10+86	RT	5546.07	5541.87	1/2	10+80.11	RT	DOUBLE		60/61	10+77.27	RT	DOUBLE	
15	10+73.22	LT	5545.45	5541.25	60	10+68	RT	5546.22	5542.02	15/16	10+83.22	LT	DOUBLE		58/59	11+48.43	RT	DOUBLE	
2	10+90.11	RT	5545.56	5541.36	Pool	11+31	LT	5546.43	5542.23	3/4	11+50.77	RT	DOUBLE		POOL	11+48.43	LT	SINGLE	
16	10+93.22	LT	5545.55	5541.35	59	11+40	RT	5546.43	5542.23	17/18	11+53.88	LT	DOUBLE		56/57	12+16.65	RT	DOUBLE	
3	11+40.77	RT	5545.11	5540.91	58	11+58	RT	5546.53	5542.33	5/6	12+21.43	RT	DOUBLE		55	12+79.49	RT	SINGLE	
17	11+43.88	LT	5545.09	5540.89	57	12+08	RT	5546.77	5542.57	19/20	12+24.54	LT	DOUBLE		54	13+24.95	RT	SINGLE	
4	11+60.77	RT	5545.21	5541.01	56	12+31	RT	5547.20	5543.00	7	12+56.76	RT	SINGLE		28/29	13+39.31	LT	DOUBLE	
18	11+63.88	LT	5545.19	5540.99	55	12+47	RT	5547.50	5543.30	21	12+59.87	LT	SINGLE		52/53	13+54.84	RT	DOUBLE	
5	12+11.43	RT	5544.75	5540.55	54	13+08	RT	5547.48	5543.28	8/9	13+50.51	RT	DOUBLE		30/31	14+10.47	LT	DOUBLE	
19	12+14.54	LT	5544.74	5540.54	53	13+29	RT	5547.52	5543.30	22/23	13+66.02	LT	DOUBLE		50/51	14+25.50	RT	DOUBLE	
6	12+31.43	RT	5544.85	5540.65	28	13+25	LT	5547.52	5543.32	10/11	14+21.17	RT	DOUBLE		32/33	14+81.13	LT	DOUBLE	
20	12+34.54	LT	5544.84	5540.64	29	13+47	LT	5546.75	5542.35	24/25	14+36.68	LT	DOUBLE		48/49	14+96.16	RT	DOUBLE	
7	12+66.76	RT	5544.68	5540.48	32	13+65	RT	5547.56	5543.39	12/13	14+91.83	RT	DOUBLE		47	15+86.15	RT	SINGLE	
21	12+69.87	LT	5544.67	5540.47	30	13+99	LT	5547.79	5543.59	26/27	15+07.34	LT	DOUBLE		34	15+87.29	LT	SINGLE	
8	13+40.51	RT	5544.61	5540.41	51	14+02	RT	5547.79	5543.69	14	15+27.16	RT	SINGLE		45/46	16+21.48	RT	SINGLE	
22	13+56.02	LT	5544.69	5540.49	50	14+37	RT	5547.91	5543.71	35/36	16+22.62	LT	DOUBLE		35/36	16+22.62	LT	DOUBLE	
9	13+60.51	RT	5544.71	5540.51	32	14+69	LT	5548.14	5543.94	43/44	16+92.14	RT	DOUBLE		43/44	16+92.14	RT	DOUBLE	
23	13+76.02	LT	5544.70	5540.50	49	14+72	RT	5548.14	5543.94	37/38	16+93.28	LT	DOUBLE		37/38	16+93.28	LT	DOUBLE	
10	14+11.17	RT	5544.97	5540.77	33	14+89	LT	5548.24	5544.04	41/42	17+62.80	RT	DOUBLE		41/42	17+62.80	RT	DOUBLE	
24	14+26.68	LT	5545.04	5540.84	48	15+00	RT	5548.31	5544.11	39/40	17+63.44	LT	DOUBLE		39/40	17+63.44	LT	DOUBLE	
11	14+31.17	RT	5545.07	5540.87	47	15+75	RT	5549.30	5544.86	10+25	RT	SINGLE		10+25	RT	SINGLE			
25	14+46.68	LT	5545.14	5540.94	34	15+78	LT	5549.31	5544.92	Irrigation	15+32	RT	SINGLE		Irrigation	15+32	RT	SINGLE	
12	14+81.83	RT	5545.32	5541.12	36	16+15	LT	5549.90	5545.33	Irrigation	15+47	LT	SINGLE		Irrigation	15+47	LT	SINGLE	
26	14+97.34	LT	5545.40	5541.20	35	16+12	LT	5549.90	5545.21										
13	15+17.16	RT	5545.50	5541.30	45	16+30	RT	5550.30	5545.52										
27	15+20.34	LT	5545.50	5541.30	36	16+33	LT	5550.10	5545.57										
14	15+37.16	RT	5545.60	5541.40	44	16+78	RT	5551.20	5546.23										
					37	16+82	LT	5550.90	5546.29										
					43	16+99	RT	5551.50	5546.47										
					38	17+02	LT	5551.10	5546.94										
					42	17+47	RT	5552.30	5547.15										
					39	17+54	LT	5551.90	5546.72										
					41	17+70	RT	5552.70	5547.39										
					40	17+73	LT	5552.20	5546.54										

RESTRAINED LENGTHS,Lr, FOR PVC (C900)															DEAD ENDS OF VALV
MINIMAL PIPE S E	HORIZONTAL BENDS				TEES		VERTICAL OFFSETS								
	90°	45°	22 1/2°	11 1/4°	LRN=0°	LRN=10°	90° BEND FITTINGS		45° BEND FITTINGS		22 1/2° BEND FITTINGS		11 1/4° BEND FITTINGS		
							D BEND	U BEND	D BEND	U BEND	D BEND	U BEND			
4	18	7	4	NO RESTRAINT REQUIRED	30	8	31	18	13	7	6	3	31		
6	25	10	5		43	20	44	25	18	10	9	5	44		
8	32	13	6		56	34	58	32	24	13	11	6	58		
10	38	18	8		68	45	69	38	29	16	14	8	69		
12	45	19	9		80	57	81	45	34	19	16	9	81		

NOTE: ALL UNDERGROUND UTILITY LOCATIONS SHOWN HEREON ARE BASED ON FIELD SURVEY, RECORD MAPS OR NEW MEXICO ONE CALL MARKINGS. PROPERTY LINE INFORMATION SHOWN WAS TAKEN FROM EXISTING RECORDS. THE EXACT LOCATION OF ALL UTILITIES AND PROPERTY LINES SHALL BE FIELD VERIFIED BY THE CONTRACTOR PRIOR TO BEGINNING CONSTRUCTION.

SANITARY SEWER SYSTEM

- ALL STATIONING AND OFFSETS ARE BASED ON STREET CENTERLINE.
- LOCATIONS OF WATER MAINS AND SEWER LINES SHALL BE IN ACCORDANCE WITH SECTION 801.7 OF THE STANDARD SPECIFICATIONS.
- ALL SANITARY SEWER LINES SHALL BE PVC (SDR 35) PIPE. DUCTILE IRON OR VITRIFIED CLAY PIPE MAY BE USED WITH THE PRIOR APPROVAL OF THE ENGINEER AND OWNER.
- SEWER SERVICE LATERALS SHALL BE SCHEDULE 40 PVC AND BE PROVIDED WITH ELECTRONIC MARKER DISCS AS PER THE STANDARD SPECIFICATIONS (DWG NO. 2125). ELECTRONIC MARKER DISCS SHALL BE PROVIDED IN ACCORDANCE WITH THE STANDARD SPECIFICATIONS. SEWER SERVICE LATERALS SHALL CONNECT TO SEWER LINE WITH A MIN. SPACING BETWEEN LATERALS OF 3 FEET.

WATER DISTRIBUTION SYSTEM

- ALL STATIONING AND OFFSETS ARE BASED ON STREET CENTERLINE.
- ALL WATER DISTRIBUTION LINES SHALL BE PVC (C900) PIPE. DUCTILE IRON PIPE MAY BE USED WITH THE PRIOR APPROVAL OF THE ENGINEER AND OWNER.
- ALL WATER SERVICES SHALL BE COPPER PIPE.
- WATER LINE SHALL HAVE MINIMUM COVER OF 3.0 FEET (TOP OF PAVEMENT TO TOP OF PIPE).
- ELECTRONIC MARKER DISCS SHALL BE PLACED IN ACCORDANCE WITH THE STANDARD SPECIFICATIONS.
- IN ACCORDANCE WITH SECTION 801 OF THE STANDARD SPECIFICATIONS, METALIZED DETECTABLE WARNING TAP SHALL BE INSTALLED 18 INCHES ABOVE ALL PVC PIPE INSTALLED ON THIS PROJECT.
- VALVE STEM EXTENSIONS SHALL BE PROVIDED IN ACCORDANCE WITH THE STANDARD SPECIFICATIONS. THE COST OF VALVE STEM EXTENSIONS IS CONSIDERED INCIDENTAL TO CONSTRUCTION; THEREFORE NO SEPARATE PAYMENT SHALL BE MADE.
- JOINT RESTRAINT SHALL BE INSTALLED PER THE STANDARD SPECIFICATIONS AND WILL BE CONSIDERED INCIDENTAL TO THE PROJECT.
- LOCATIONS OF WATER MAINS AND SEWER LINES SHALL BE IN ACCORDANCE WITH SECTION 801.7 OF THE STANDARD SPECIFICATIONS.
- CONTRACTOR SHALL COORDINATE WITH THE WATER SYSTEM DIVISION FOR THE EXECUTION OF THE VALVE SHUT OFF PLAN IN ACCORDANCE WITH SECTION 18 OF THE STANDARD SPECIFICATIONS. ONLY WATER SYSTEM DIVISION PERSONNEL SHALL OPERATE EXISTING VALVES.

STREET PAVING IMPROVEMENTS

- ALL SLOPES AS SHOWN ON PROFILES ARE BASED ON STREET CENTERLINE STATIONING UNLESS OTHERWISE NOTED.
- WHERE REMOVAL OF EXISTING CURB AND GUTTER, SIDEWALK OR PAVEMENT IS REQUIRED, THE CONTRACTOR SHALL SAWCUT AND/OR REMOVE TO THE NEAREST JOINT. CURB AND GUTTER SHOWN AS EXISTING AND NOT TO BE REMOVED UNDER THIS CONTRACT WHICH IS DAMAGED BY THE CONTRACTOR SHALL BE REMOVED AND REPLACED BY THE CONTRACTOR AT THE CONTRACTOR'S EXPENSE. ALL CURB AND GUTTER SHOWN HEREON SHALL BE STANDARD CURB AND GUTTER PER THE STANDARD SPECIFICATIONS (DWG. NO. 2415), UNLESS OTHERWISE NOTED.
- IF CURB IS DEPRESSURED FOR A DRIVEPAD OR A HANDICAP RAMP, THE DRIVEPAD OR RAMP SHALL BE CONSTRUCTED PRIOR TO ACCEPTANCE OF THE CURB AND GUTTER. BACKFILL COMPACTION SHALL BE ACCORDING TO SPECIFIED STREET USE.
- TACK COAT REQUIREMENTS WILL BE DETERMINED DURING CONSTRUCTION BY THE PROJECT ENGINEER.

AS-BUILT INFORMATION

CONTRACTOR: _____ DATE: _____

INSPECTOR: _____ DATE: _____

FIELD ENGINEER: _____ DATE: _____

REVIEWED BY: _____ DATE: _____

CHECKED BY: _____ DATE: _____

RECORDED BY: _____ DATE: _____

BENCH MARKS

ELEVATIONS SHOWN ON THIS GRADING AND DRAINAGE PLAN WERE SURVEYED FROM TWO BENCH MARKS. ACS STATION NO. 4-L22 ELEVATION 5583.831 AND STATION NO. 1-L21(6) ELEVATION 5534.627.

SURVEY INFORMATION

FIELD NOTES: _____

NO. _____ DATE: _____

ENGINEER'S SEAL

11/7/97

REVISIONS

NO.	DATE	REVISION
1	4/97	AS-BUILT

DESIGN

Designed By: JS, DJ Date: 3/96

Drawn By: RP, KS, CHL Date: 3/96

Checked By: JS, DJ Date: 3/96

CITY OF ALBUQUERQUE

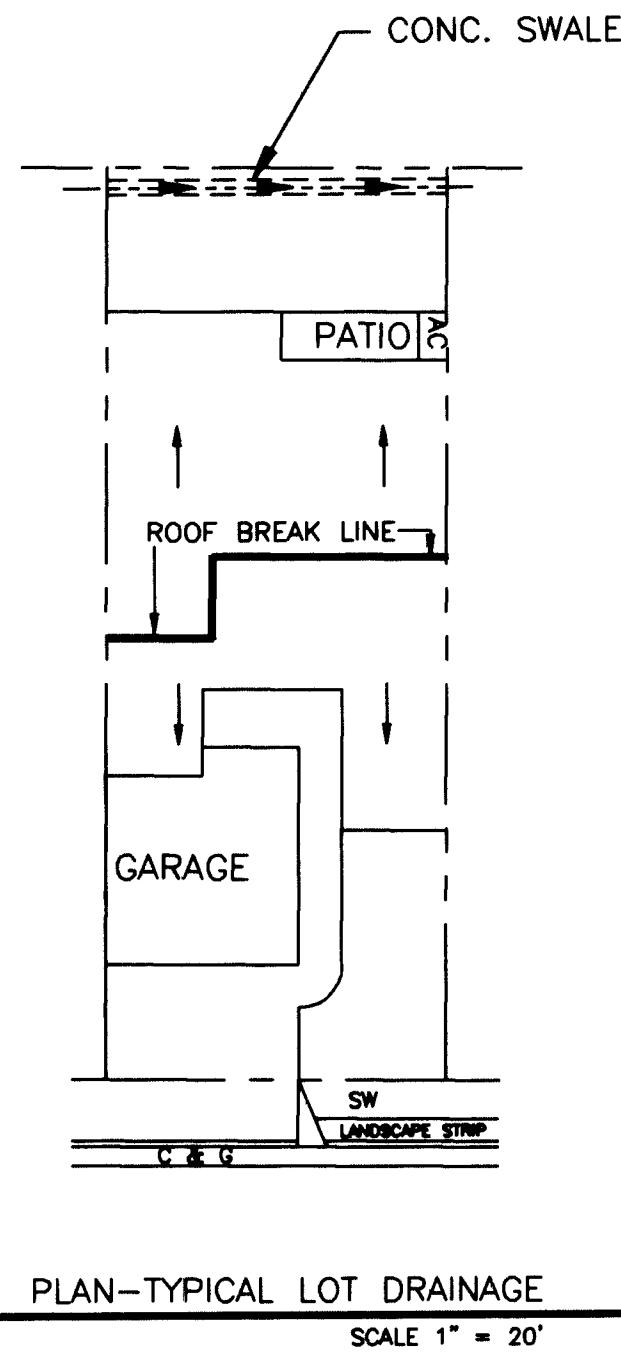
PUBLIC WORKS DEPARTMENT

ENGINEERING DEVELOPMENT GROUP

TITLE: SITE PLAN, PAVING, WATER, WATER SHUTOFF PLAN AND SAS IMPROVEMENTS

Design Review Committee: _____ City Engineer Approval: _____

City Project No. 541081 Zone Map No. L-22 Sheet 3 of 10

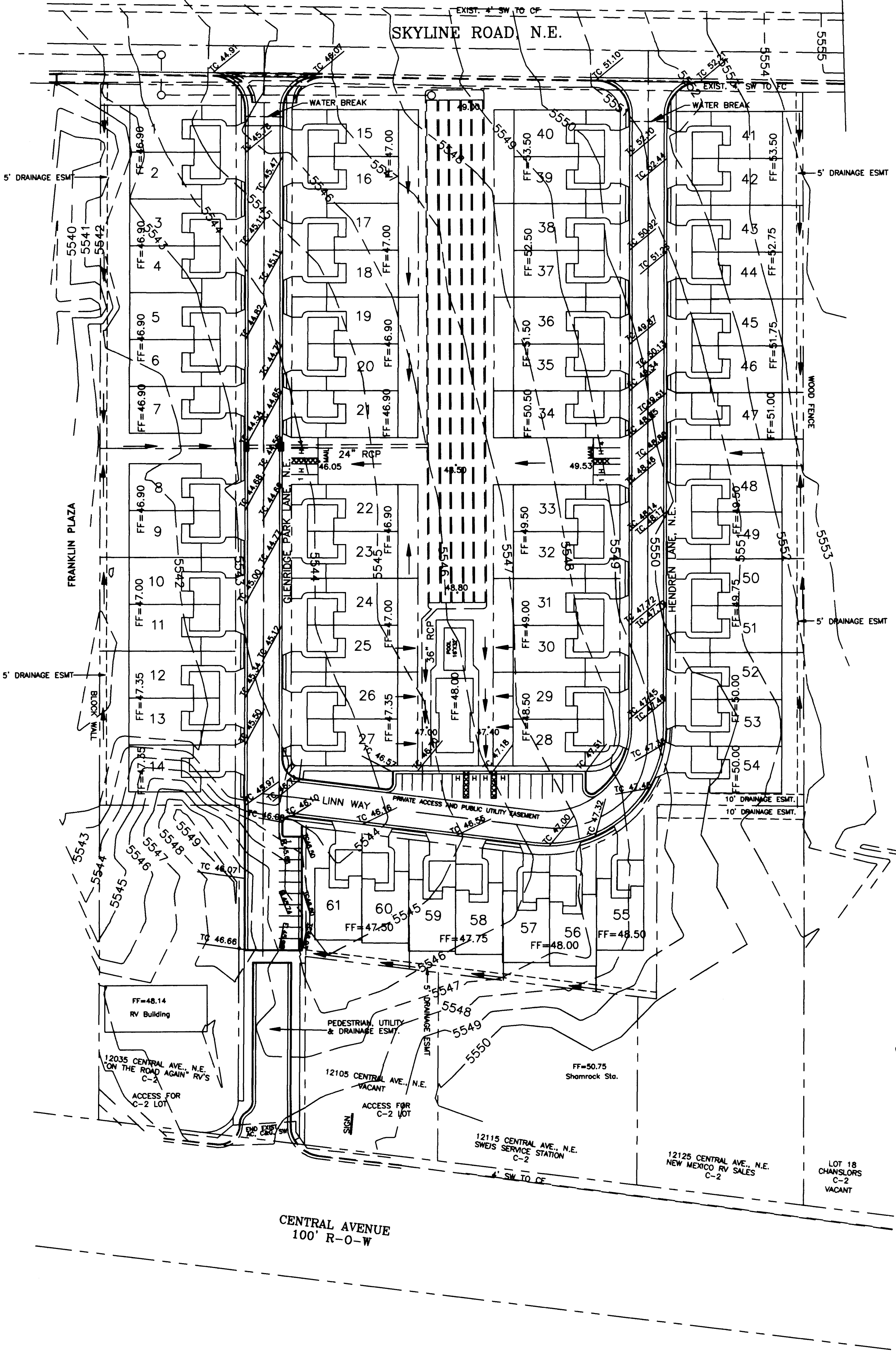


AREAS OF MODIFICATION BETWEEN APPROVED DRAINAGE GRADING PLAN AND ACTUAL AS-BUILT

- Private curb within subdivision was constructed using mountable type; therefore top of curb is 0.33 ft. lower. This has no effect on Drainage Plan.
- Minor, 0.2ft. lower, changes in water-break elevation occurred on Glenridge Park Drive.
- The Drainage Report assumed runoff from commercial lots with frontage on Central Ave. drained to Central Ave.; until these lots are filled and re-graded, runoff will enter the subdivision on paved streets.

I, James D. Smith, P.E. hereby certify that the as-built information shown is in substantial compliance with the approved drainage / grading plan.

James D. Smith, P.E. (N.M.P.E. 4891) 11/7/97
As-Built Survey provided by Shani Co. under my review



GRADING

- CONTRACTOR SHALL OBTAIN A "TOPSOIL DISTURBANCE PERMIT" PRIOR TO CONSTRUCTION.
- THE CONTRACTOR SHALL ENSURE THAT NO SOIL ERODES FROM THE SITE ONTO PUBLIC RIGHT-OF-WAY OR PRIVATE PROPERTY. THIS MAY BE ACCOMPLISHED BY CONSTRUCTING TEMPORARY BERMS AND WETTING OF THE SOIL.
- CONTRACTOR SHALL STOCKPILE ANY EXCAVATED MATERIAL WITHIN PUBLIC RIGHT-OF-WAY SO THAT IT WILL NOT BE SUSCEPTIBLE TO EROSION INTO A STREET. ALL FILL SHALL BE COMPACTED TO A MINIMUM OF 90% MAXIMUM DRY DENSITY (ASTM D-1557, MODIFIED PROCTOR). ALL FILL UNDER HOUSE PADS SHALL BE COMPACTED AT 95% MAXIMUM DRY DENSITY (ASTM D-1557). FINISHED FLOOR ELEVATIONS HAVE BEEN ESTABLISHED AT A MINIMUM OF 6 INCHES ABOVE PAD ELEVATIONS. ANY DEVIATION FROM THESE GUIDELINES SHALL BE APPROVED BY THE ENGINEER AND OWNER.
-
-

AS-BUILT INFORMATION			
CONTRACTOR	WORK	DATE	NO.
Shani Co.	Grading & Drainage	11/97	
BENCH MARKS			
ELEVATIONS SHOWN ON THIS GRADING AND DRAINAGE PLAN WERE SURVEYED FROM TWO BENCH MARKS.	DATE	BY	NO.
ACS STATION NO. 4-L22 ELEVATION 5583.831 AND STATION NO. 1-L21(R) ELEVATION 5534.627.			
SURVEY INFORMATION			
FIELD NOTES	DATE	BY	NO.
ENGINEER'S SEAL			
REVISIONS			
NO.	DATE	REMARKS	DESIGN
1	10/97	AS-BUILT	JS
Designed By: DJUS Date: 3/96 Drawn By: CLRP Date: 3/96 Checked By: DJUS Date: 3/96			

SOUDER, MILLER & ASSOCIATES
CIVIL ENVIRONMENTAL SCIENTISTS & ENGINEERS
1201 Parkway Dr., Suite C • Santa Fe, NM 87505
(505) 473-9211 FAX (505) 471-6875

CITY OF ALBUQUERQUE
PUBLIC WORKS DEPARTMENT
ENGINEERING DEVELOPMENT GROUP

TITLE: GRADING AND DRAINAGE PLAN

Design Review Committee	City Engineer Approval	Mo./Day/Yr.	Mo./Day/Yr.

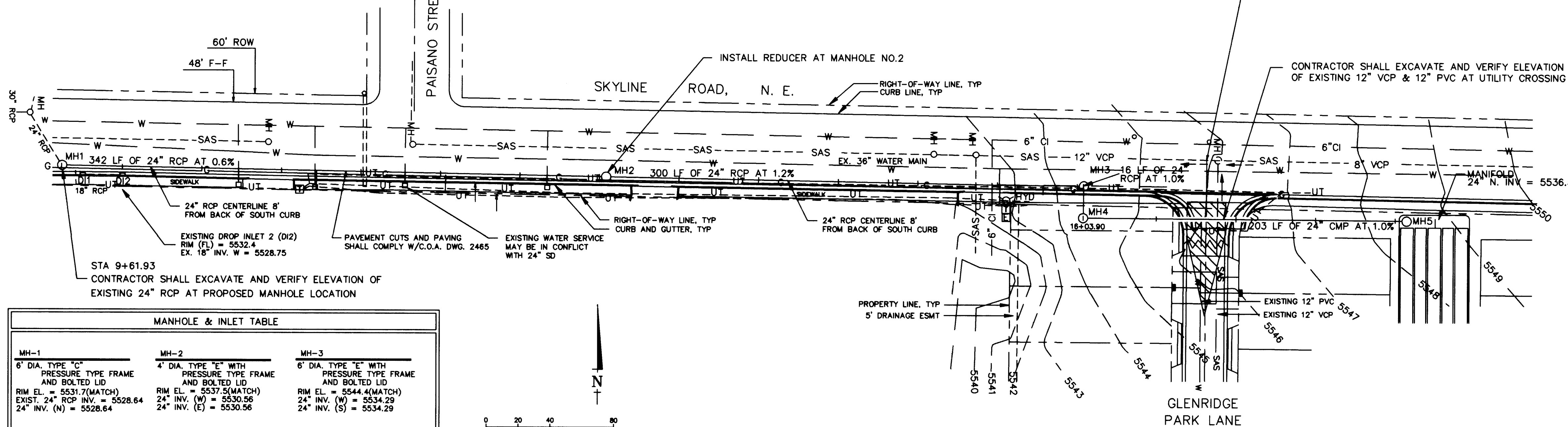
City Project No. 541081 Zone Map No. L-22 Sheet 4 of 10

SCANNED BY
BY LASON

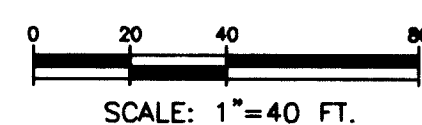
P:\GLEN_S\A\SHEET4.DWG

NOTE: ALL UNDERGROUND UTILITY LOCATIONS SHOWN HEREON ARE BASED ON FIELD SURVEY, RECORD MAPS OR NEW MEXICO ONE CALL MARKINGS. PROPERTY LINE INFORMATION SHOWN WAS TAKEN FROM EXISTING RECORDS. THE EXACT LOCATION OF ALL UTILITIES AND PROPERTY LINES SHALL BE FIELD VERIFIED BY THE CONTRACTOR PRIOR TO BEGINNING CONSTRUCTION.

NEW INLETS SHOULD NOT BE CONNECTED TO 24" STORM DRAIN. PIPE WILL BE UNDER PRESSURE UNTIL DETENTION RESERVOIR IS DRAINED.



MANHOLE & INLET TABLE		
MH-1 6" DIA. TYPE "C" WITH PRESSURE TYPE FRAME AND BOLTED LID RIM EL. = 5531.7(MATCH) EXIST. 24" RCP INV. = 5528.64 24" INV. (N) = 5528.64	MH-2 4" DIA. TYPE "E" WITH PRESSURE TYPE FRAME AND BOLTED LID RIM EL. = 5537.5(MATCH) 24" INV. (W) = 5530.56 24" INV. (E) = 5530.56	MH-3 6" DIA. TYPE "E" WITH PRESSURE TYPE FRAME AND BOLTED LID RIM EL. = 5544.4(MATCH) 24" INV. (W) = 5534.29 24" INV. (S) = 5534.29
MH-4 6" DIA. TYPE "E" WITH PRESSURE TYPE FRAME AND BOLTED LID RIM EL. = 5547.0(MATCH) 24" INV. (N) = 5534.59 24" INV. (E) = 5535.59	MH-5 6" DIA. TYPE "E" WITH PRESSURE TYPE FRAME AND BOLTED LID RIM EL. = 5548.8 24" INV. (N) = 5536.50	



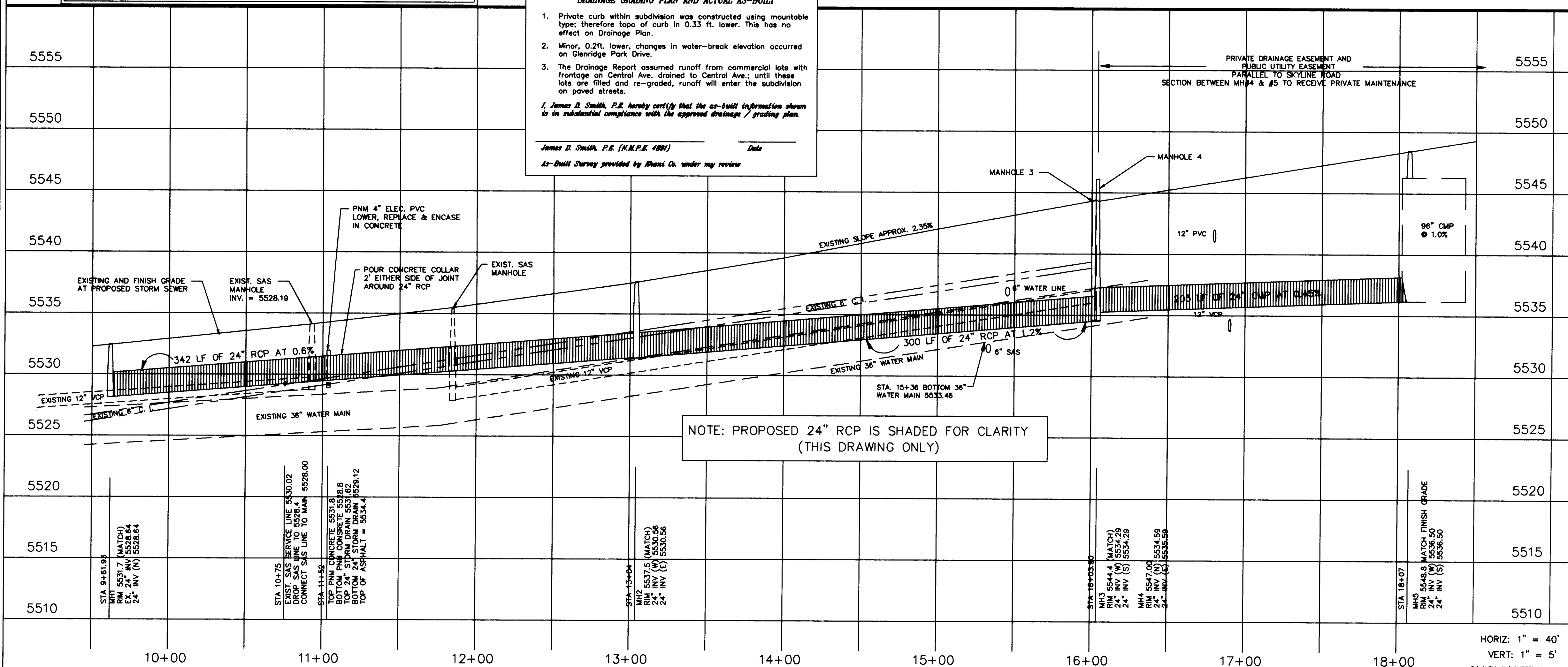
SKYLINE ROAD, N.E.

AREAS OF MODIFICATION BETWEEN APPROVED DRAINAGE GRADING PLAN AND ACTUAL AS-BUILT

- Private curb within subdivision was constructed using mountable type; therefore topo of curb in 0.53 ft. lower. This has no effect on Drainage Plan.
- Minor, 0.2ft. lower, changes in water-break elevation occurred on Glenridge Park Drive.
- The Drainage Report assumed runoff from commercial lots with frontage on Central Ave., drained to Central Ave.; until these lots are filled and re-graded, runoff will enter the subdivision on paved streets.

I, James D. Smith, P.E. hereby certify that the as-built information shown is in substantial compliance with the approved drainage / grading plan.

James D. Smith, P.E. (N.M.P.E. 4801) Date
As-Built Survey provided by Daniel Co. under my review



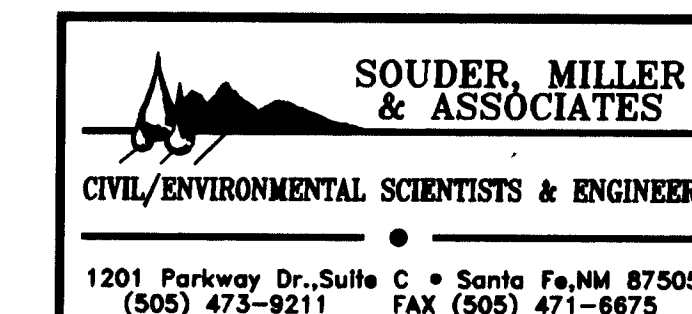
STORM DRAIN/DETENTION SYSTEM

- CONTRACTOR SHALL TAKE ALL NECESSARY STEPS TO ELIMINATE SEDIMENTATION OF THE STORM DRAIN/DETENTION SYSTEM DURING CONSTRUCTION. THE STORM DRAIN/DETENTION SYSTEM SHALL BE ACCEPTED FOR FINAL PAYMENT IN A CLEAN AND FREE OF SEDIMENT CONDITION UPON COMPLETION OF THE ENTIRE CONSTRUCTION PROJECT.
- PIPE MATERIAL SHALL BE REINFORCED CONCRETE PIPE (R.C.P.), CLASS III, OR CORRUGATED METAL PIPE (C.M.P.) AS SPECIFIED ON THE PLANS. SUBSTITUTE OR EQUAL MATERIALS MAY BE USED WITH THE PRIOR APPROVAL OF THE ENGINEER AND OWNER.
- ALL C.M.P. SHALL CONFORM TO AASHTO M-36 AND PIPE MATERIAL SHALL CONFORM TO AASHTO M-274.
- ALL C.M.P. SHALL BE INSTALLED IN ACCORDANCE TO ASTM A-798/M-145.
- ALL C.M.P. SHALL BE ALUMINIZED STEEL, TYPE 2 PIPE. JOINTS SHALL BE ALUMINIZED STEEL TYPE 2 HUGGER BANDS WITH DOUBLE BAR, BOLT AND STRAP ARRANGEMENT AND A 14 GAGE BACK-UP PLATE WITH O-RING GASKETS.
- ALL 96-INCH DIAMETER C.M.P. SHALL BE 16 GAGE AND 84-INCH DIAMETER PIPE SHALL BE 16 GAGE. C.M.P. SHALL BE MANUFACTURED FROM 5 IN. x 1 IN. CORRUGATIONS.
- PRIOR TO CONSTRUCTION, CONTRACTOR SHALL SUBMIT FABRICATION DETAILS THAT REFLECT CURRENT INDUSTRY STANDARDS TO THE ENGINEER.

STREET PAVING IMPROVEMENTS

- ALL SLOPES AS SHOWN ON PROFILES ARE BASED ON STREET CENTERLINE STATIONING UNLESS OTHERWISE NOTED.
- WHERE REMOVAL OF EXISTING CURB AND GUTTER, SIDEWALK OR PAVEMENT IS REQUIRED, THE CONTRACTOR SHALL SAWCUT AND/OR REMOVE TO THE NEAREST JOINT. CURB AND GUTTER SHOWN AS EXISTING AND NOT TO BE REMOVED UNDER THIS CONTRACT WHICH IS DAMAGED BY THE CONTRACTOR SHALL BE REMOVED AND REPLACED BY THE CONTRACTOR AT THE CONTRACTOR'S EXPENSE.
- ALL CURB AND GUTTER SHOWN HEREON SHALL BE STANDARD CURB AND GUTTER PER THE STANDARD SPECIFICATIONS (DWG. NO. 2415), UNLESS OTHERWISE NOTED.
- IF CURB IS DEPRESSED FOR A DRIVEPAD OR A HANDICAP RAMP, THE DRIVEPAD OR RAMP SHALL BE CONSTRUCTED PRIOR TO ACCEPTANCE OF THE CURB AND GUTTER. BACKFILL COMPACTION SHALL BE ACCORDING TO SPECIFIED STREET USE.
- TACK COAT REQUIREMENTS WILL BE DETERMINED DURING CONSTRUCTION BY THE PROJECT ENGINEER.

26-5410.81 0597



CITY OF ALBUQUERQUE PUBLIC WORKS DEPARTMENT ENGINEERING DEVELOPMENT GROUP	
TITLE: STORM DRAIN IMPROVEMENTS SKYLINE ROAD, N.E. PLAN & PROFILE	
Design Review Committee	City Engineer Approval
City Project No. 541081	Zone Map No. L-22
Sheet 5	of 10

SKYLINE ROAD, N.E.

10+00

11+00

12+00

13+00

14+00

15+00

16+00

17+00

18+00

REMOVE EXISTING CURB RETURNS
BUILD NEW RETURN TO MATCH EXISTING
CURB & GUTTER
(SEE SHEET 9 FOR DETAILS)

APPROXIMATE LOCATION OF
EXISTING FIRE HYDRANT TO
BE REMOVED AND CAPPED
BY CONTRACTOR

CONSTRUCT WHEEL CHAIR
RAMP PER COA STD. DWG.
2241, CASE-1

CUT OFF WALL
61

AREA TO BE LANDSCAPED
500'22'00"W 142.00'

TYPE 3 BARRICADE

SAWCUT & MATCH EXISTING
PAVEMENT AND CURB RETURNS

STA 15+72.50 TO STA 16+82
CONSTRUCT 4' SIDEWALK
MATCH ELEVATIONS
INSTALL HANDRAIL AS REQUIRED

STA 15+81
INSTALL 1) 12" X 6" TEE

STA 15+72.50 TO STA 16+82
CONSTRUCT 4' SIDEWALK
MATCH ELEVATIONS
INSTALL HANDRAIL AS REQUIRED

STA 15+81
INSTALL 1) 12" X 6" TEE

STA 15+72.50 TO STA 16+82
CONSTRUCT 4' SIDEWALK
MATCH ELEVATIONS
INSTALL HANDRAIL AS REQUIRED

STA 15+81
INSTALL 1) 12" X 6" TEE

STA 15+72.50 TO STA 16+82
CONSTRUCT 4' SIDEWALK
MATCH ELEVATIONS
INSTALL HANDRAIL AS REQUIRED

STA 15+81
INSTALL 1) 12" X 6" TEE

STA 15+72.50 TO STA 16+82
CONSTRUCT 4' SIDEWALK
MATCH ELEVATIONS
INSTALL HANDRAIL AS REQUIRED

STA 15+81
INSTALL 1) 12" X 6" TEE

STA 15+72.50 TO STA 16+82
CONSTRUCT 4' SIDEWALK
MATCH ELEVATIONS
INSTALL HANDRAIL AS REQUIRED

STA 15+81
INSTALL 1) 12" X 6" TEE

STA 15+72.50 TO STA 16+82
CONSTRUCT 4' SIDEWALK
MATCH ELEVATIONS
INSTALL HANDRAIL AS REQUIRED

STA 15+81
INSTALL 1) 12" X 6" TEE

STA 15+72.50 TO STA 16+82
CONSTRUCT 4' SIDEWALK
MATCH ELEVATIONS
INSTALL HANDRAIL AS REQUIRED

STA 15+81
INSTALL 1) 12" X 6" TEE

STA 15+72.50 TO STA 16+82
CONSTRUCT 4' SIDEWALK
MATCH ELEVATIONS
INSTALL HANDRAIL AS REQUIRED

STA 15+81
INSTALL 1) 12" X 6" TEE

STA 15+72.50 TO STA 16+82
CONSTRUCT 4' SIDEWALK
MATCH ELEVATIONS
INSTALL HANDRAIL AS REQUIRED

STA 15+81
INSTALL 1) 12" X 6" TEE

STA 15+72.50 TO STA 16+82
CONSTRUCT 4' SIDEWALK
MATCH ELEVATIONS
INSTALL HANDRAIL AS REQUIRED

STA 15+81
INSTALL 1) 12" X 6" TEE

STA 15+72.50 TO STA 16+82
CONSTRUCT 4' SIDEWALK
MATCH ELEVATIONS
INSTALL HANDRAIL AS REQUIRED

STA 15+81
INSTALL 1) 12" X 6" TEE

STA 15+72.50 TO STA 16+82
CONSTRUCT 4' SIDEWALK
MATCH ELEVATIONS
INSTALL HANDRAIL AS REQUIRED

STA 15+81
INSTALL 1) 12" X 6" TEE

STA 15+72.50 TO STA 16+82
CONSTRUCT 4' SIDEWALK
MATCH ELEVATIONS
INSTALL HANDRAIL AS REQUIRED

STA 15+81
INSTALL 1) 12" X 6" TEE

STA 15+72.50 TO STA 16+82
CONSTRUCT 4' SIDEWALK
MATCH ELEVATIONS
INSTALL HANDRAIL AS REQUIRED

STA 15+81
INSTALL 1) 12" X 6" TEE

STORM DRAIN/DETENTION SYSTEM

- CONTRACTOR SHALL TAKE ALL NECESSARY STEPS TO ELIMINATE SEDIMENTATION OF THE STORM DRAIN/DETENTION SYSTEM DURING CONSTRUCTION. THE STORM DRAIN/DETENTION SYSTEM SHALL BE ACCEPTED FOR FINAL PAYMENT IN A CLEAN AND FREE OF SEDIMENT CONDITION UPON COMPLETION OF THE ENTIRE CONSTRUCTION PROJECT.
- PIPE MATERIAL SHALL BE REINFORCED CONCRETE PIPE (R.C.P.), CLASS III, OR CORRUGATED METAL PIPE (C.M.P.) AS SPECIFIED ON THE PLANS. SUBSTITUTE OR EQUAL MATERIALS MAY BE USED WITH THE PRIOR APPROVAL OF THE ENGINEER AND OWNER.
- ALL C.M.P. SHALL CONFORM TO AASHTO M-36 AND PIPE MATERIAL SHALL CONFORM TO AASHTO M-274.
- ALL C.M.P. SHALL BE INSTALLED IN ACCORDANCE TO ASTM A-798/M-145. ALL C.M.P. SHALL BE ALUMINIZED STEEL, TYPE 2 PIPE. JOINTS SHALL BE ALUMINIZED STEEL TYPE 2 HUGGER BANDS WITH DOUBLE BAR, BOLT AND STRAP ARRANGEMENT AND A 14 GAGE BACK-UP PLATE WITH O-RING GASKETS.
- ALL 96-INCH DIAMETER C.M.P. SHALL BE 16 GAGE AND 84-INCH DIAMETER PIPE SHALL BE 16 GAGE. C.M.P. SHALL BE MANUFACTURED FROM 5 IN. x 1 IN. CORRUGATIONS.
- PRIOR TO CONSTRUCTION, CONTRACTOR SHALL SUBMIT FABRICATION DETAILS THAT REFLECT CURRENT INDUSTRY STANDARDS TO THE ENGINEER.

STREET PAVING IMPROVEMENTS

- ALL SLOPES AS SHOWN ON PROFILES ARE BASED ON STREET CENTERLINE STATIONING UNLESS OTHERWISE NOTED.
- WHERE REMOVAL OF EXISTING CURB AND GUTTER, SIDEWALK OR PAVEMENT IS REQUIRED, THE CONTRACTOR SHALL SAWCUT AND/OR REMOVE TO THE NEAREST JOINT. CURB AND GUTTER SHOWN AS EXISTING AND NOT TO BE REMOVED UNDER THIS CONTRACT WHICH IS DAMAGED BY THE CONTRACTOR SHALL BE REMOVED AND REPLACED BY THE CONTRACTOR AT THE CONTRACTOR'S EXPENSE.
- ALL CURB AND GUTTER SHOWN HEREON SHALL BE STANDARD CURB AND GUTTER PER THE STANDARD SPECIFICATIONS (DWC. NO. 2415), UNLESS OTHERWISE NOTED.
- IF CURB IS DEPRESSED FOR A DRIVEPAD OR A HANDICAP RAMP, THE DRIVEPAD OR RAMP SHALL BE CONSTRUCTED PRIOR TO ACCEPTANCE OF THE CURB AND GUTTER.
- BACKFILL COMPACTION SHALL BE ACCORDING TO SPECIFIED STREET USE.
- TACK COAT REQUIREMENTS WILL BE DETERMINED DURING CONSTRUCTION BY THE PROJECT ENGINEER.

26-5410-811 0607

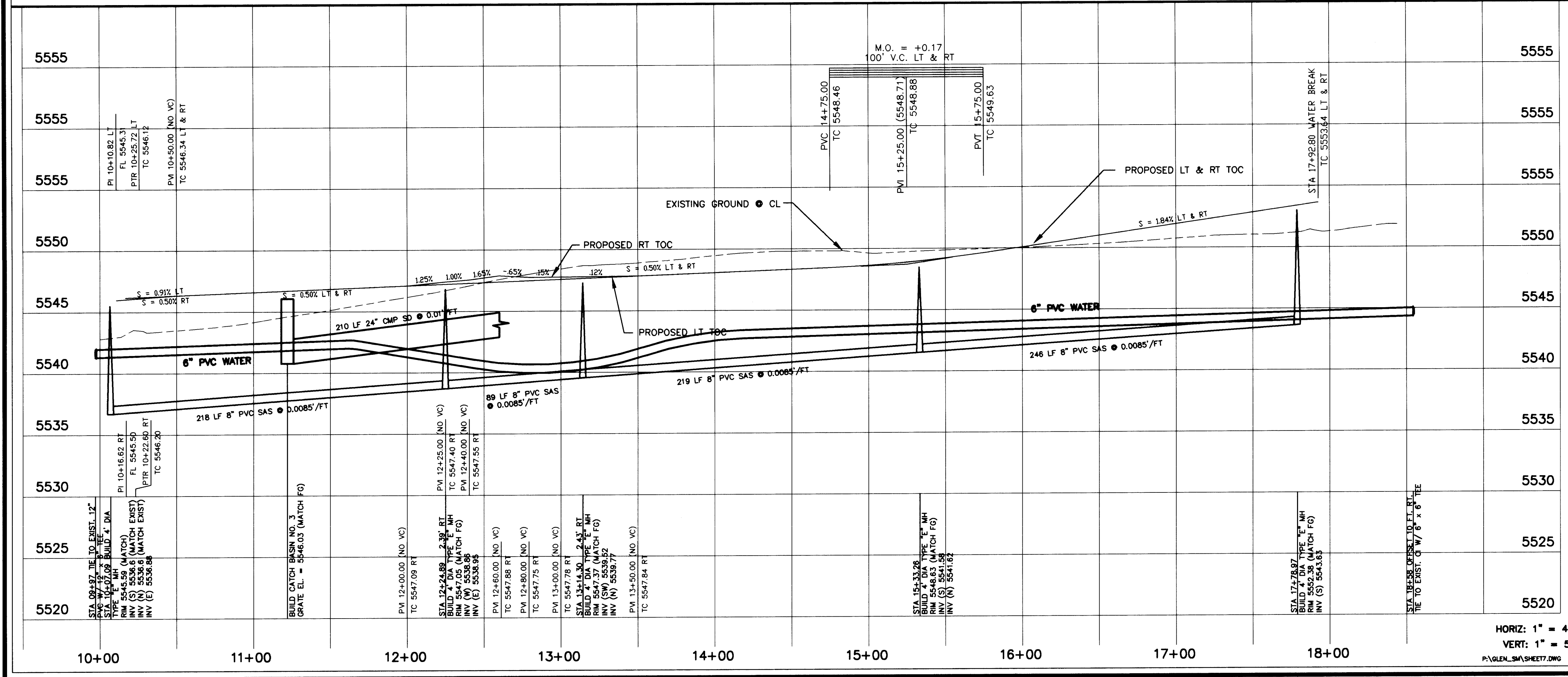
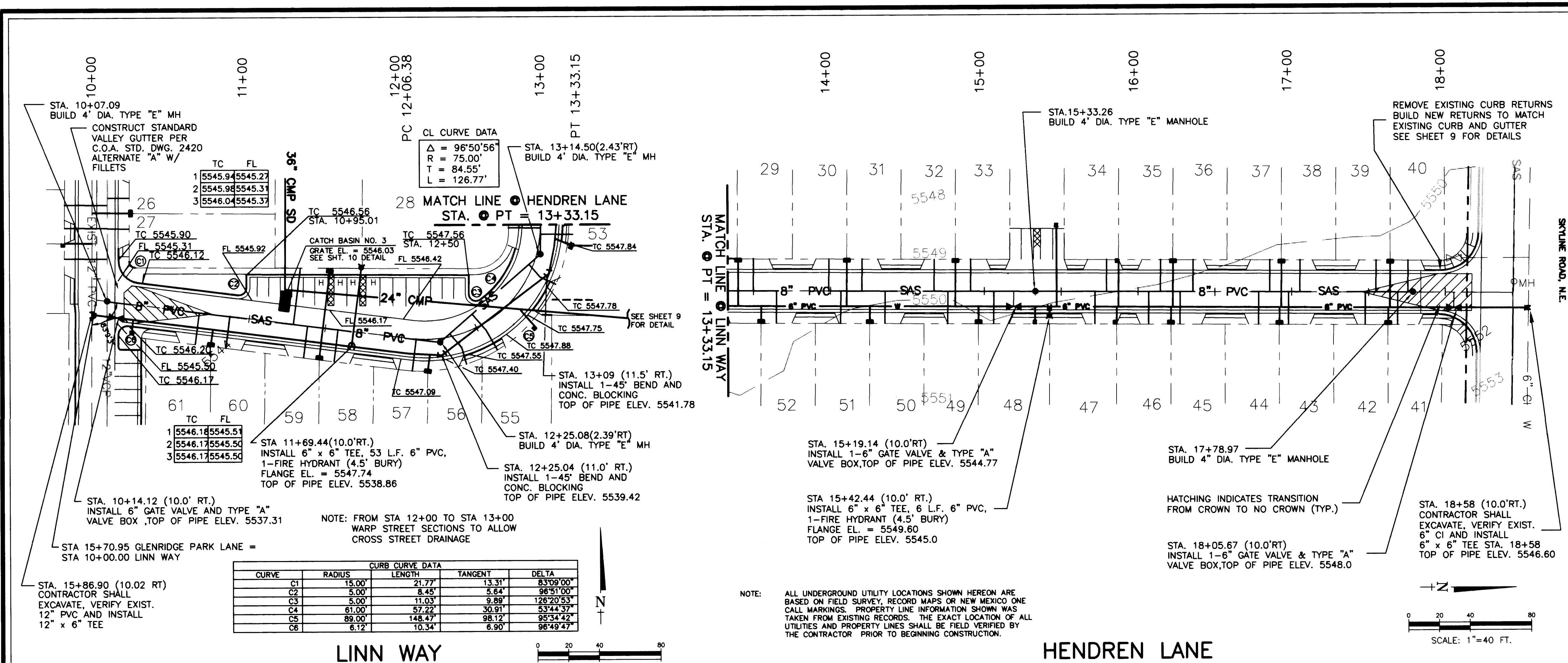
SOUDEY, MILLER & ASSOCIATES
CIVIL/ENVIRONMENTAL SCIENTISTS & ENGINEERS
1201 Parkway Dr., Suite C • Santa Fe, NM 87505
(505) 473-9211 FAX (505) 471-6675

CITY OF ALBUQUERQUE
PUBLIC WORKS DEPARTMENT
ENGINEERING DEVELOPMENT GROUP

TITLE: PAVING, SAS, WATER & STORM DRAIN IMPROVEMENTS
GLENRIDGE PARK LANE PLAN & PROFILE

Design Review Committee	City Engineer Approval	Mo./Day/Yr.	Mo./Day/Yr.
City Project No.	Zone Map No.	Sheet	of
541081	L-22	6	10

SCANNED BY
BY LASON



SANITARY SEWER SYSTEM

- ALL STATIONING AND OFFSETS ARE BASED ON STREET CENTERLINE.
- LOCATIONS OF WATER MAINS AND SEWER LINES SHALL BE IN ACCORDANCE WITH SECTION 801.7 OF THE STANDARD SPECIFICATIONS.
- ALL SANITARY SEWER LINES SHALL BE PVC (SDR 35) PIPE, DUCTILE IRON OR VITRIFIED CLAY PIPE MAY BE USED WITH THE PRIOR APPROVAL OF THE ENGINEER AND OWNER.
- SEWER SERVICE LATERALS SHALL BE SCHEDULE 40 PVC AND BE PROVIDED WITH ELECTRONIC MARKER DISCS AS PER THE STANDARD SPECIFICATIONS (DWG NO. 2125). ELECTRONIC MARKER DISCS SHALL BE PROVIDED IN ACCORDANCE WITH THE STANDARD SPECIFICATIONS.
- WHERE CONCRETE ENCASED SANITARY SEWER IS SPECIFIED, CONTRACTOR MAY SUBSTITUTE PRESSURE CLASS PIPE EXTENDING MANHOLE TO MANHOLE.

STORM DRAIN/DETENTION SYSTEM

- CONTRACTOR SHALL TAKE ALL NECESSARY STEPS TO ELIMINATE SEDIMENTATION OF THE STORM DRAIN/DETENTION SYSTEM DURING CONSTRUCTION. THE STORM DRAIN/DETENTION SYSTEM SHALL BE ACCEPTED FOR FINAL PAYMENT IN A CLEAN AND FREE OF SEDIMENT CONDITION UPON COMPLETION OF THE ENTIRE CONSTRUCTION PROJECT.
- PIPE MATERIAL SHALL BE REINFORCED CONCRETE PIPE (R.C.P.), CLASS III, OR CORRUGATED METAL PIPE (C.M.P.) AS SPECIFIED ON THE PLANS. SUBSTITUTE OR EQUAL MATERIALS MAY BE USED WITH THE PRIOR APPROVAL OF THE ENGINEER AND OWNER.
- ALL C.M.P. SHALL CONFORM TO AASHTO M-38 AND PIPE MATERIAL SHALL CONFORM TO AASHTO M-274.
- ALL C.M.P. SHALL BE INSTALLED IN ACCORDANCE TO ASTM A-788/A-145. ALL C.M.P. SHALL BE ALUMINIZED STEEL TYPE 2 PIPE. JOINTS SHALL BE ALUMINIZED STEEL TYPE AUGER BANDS WITH DOUBLE BAR, BOLT AND STRAP ARRANGEMENT AND A 14 GAGE BACK-UP PLATE WITH O-RING GASKETS.
- ALL 96-INCH DIAMETER C.M.P. SHALL BE 16 GAGE AND 84-INCH DIAMETER PIPE SHALL BE 18 GAGE. C.M.P. SHALL BE MANUFACTURED FROM 5 IN. x 1 IN. CORRUGATIONS.
- PRIOR TO CONSTRUCTION, CONTRACTOR SHALL SUBMIT FABRICATION DETAILS THAT REFLECT CURRENT INDUSTRY STANDARDS TO THE ENGINEER.

STREET PAVING IMPROVEMENTS

- ALL SLOPES AS SHOWN ON PROFILES ARE BASED ON STREET CENTERLINE. STATIONING UNLESS OTHERWISE NOTED.
- WHERE REMOVAL OF EXISTING CURB AND GUTTER, SIDEWALK OR PAVEMENT IS REQUIRED, THE CONTRACTOR SHALL SAWCUT AND/OR REMOVE TO THE NEAREST JOINT. CURB AND GUTTER SHOWN AS EXISTING AND NOT TO BE REMOVED UNDER THIS CONTRACT WHICH IS DAMAGED BY THE CONTRACTOR SHALL BE REMOVED AND REPLACED BY THE CONTRACTOR AT THE CONTRACTOR'S EXPENSE.
- ALL CURB AND GUTTER SHOWN HEREON SHALL BE STANDARD CURB AND GUTTER PER THE STANDARD SPECIFICATIONS (DWG NO. 2415) UNLESS OTHERWISE NOTED.
- IF CURB IS DEEPER FOR A DRIVEWAY OR A HANDICAP RAMP, THE DRIVEWAY OR RAMP SHALL BE CONSTRUCTED PRIOR TO ACCEPTANCE OF THE CURB AND GUTTER. BACKFILL COMPACTION SHALL BE ACCORDING TO SPECIFIED STREET USE.
- TACK COAT REQUIREMENTS WILL BE DETERMINED DURING CONSTRUCTION BY THE PROJECT ENGINEER.

WATER DISTRIBUTION SYSTEM

- ALL STATIONING AND OFFSETS ARE BASED ON STREET CENTERLINE.
- ALL WATER DISTRIBUTION LINES SHALL BE PVC (SDR 35) PIPE, DUCTILE IRON PIPE MAY BE USED WITH THE PRIOR APPROVAL OF THE ENGINEER AND OWNER.
- ALL WATER SERVICES SHALL BE PVC C800 PIPE.
- WATER LINE SHALL HAVE MINIMUM COVER OF 4.0 FEET (TOP OF CURB TO TOP OF PIPE).
- ELECTRONIC MARKER DISCS SHALL BE PLACED IN ACCORDANCE WITH THE STANDARD SPECIFICATIONS.
- IN ACCORDANCE WITH SECTION 801 OF THE STANDARD SPECIFICATIONS, METALLIZED DETECTABLE WARNING TAP SHALL BE INSTALLED 18 INCHES ABOVE ALL PVC PIPE INSTALLED ON THIS PROJECT.
- VALVE STEM EXTENSIONS SHALL BE PROVIDED IN ACCORDANCE WITH THE STANDARD SPECIFICATIONS. THE COST OF VALVE STEM EXTENSIONS IS CONSIDERED INCIDENTAL TO CONSTRUCTION; THEREFORE NO SEPARATE PAYMENT SHALL BE MADE.
- JOINT RESTRAINT SHALL BE INSTALLED PER THE STANDARD SPECIFICATIONS AND WILL BE CONSIDERED INCIDENTAL TO THE PROJECT.
- LOCATIONS OF WATER MAINS AND SEWER LINES SHALL BE IN ACCORDANCE WITH SECTION 801.7 OF THE STANDARD SPECIFICATIONS.
- CONTRACTOR SHALL COORDINATE WITH THE WATER SYSTEM DIVISION FOR THE EXECUTION OF THE VALVE SHUT OFF PLAN IN ACCORDANCE WITH SECTION 18 OF THE STANDARD SPECIFICATIONS. ONLY WATER SYSTEM DIVISION PERSONNEL SHALL OPERATE EXISTING VALVES.

AS-BUILT INFORMATION

CONTRACTOR: *Khan G.* Date: *11/97*

WORK: *Khan G.* Date: *11/97*

FIELD: *Khan G.* Date: *11/97*

ACCEPTANCE: *Khan G.* Date: *11/97*

CORRECTED: *Khan G.* Date: *11/97*

RECORDED BY: *Khan G.* Date: *11/97*

BENCH MARKS

ELEVATIONS SHOWN ON THIS GRADING AND DRAINAGE PLAN WERE SURVEYED FROM TWO BENCH MARKS.

ACS STATION NO. 4-122 ELEVATION 5583.831 AND STATION NO. 1-121(R) ELEVATION 5534.627.

SURVEY INFORMATION

FIELD NOTES

NO.	DATE	BY

ENGINEER'S SEAL

JAMES DONALD SMITH
REGISTERED PROFESSIONAL ENGINEER
NO. 4991
11/17/97

REVISIONS

NO.	DATE	BY	REMARKS
1	10/97	JS	AS-BUILT

DESIGN

Designed By: JS, DJ Date: 3/96
Drawn By: RP, KS, ORL Date: 3/96
Checked By: JS, DJ Date: 3/96

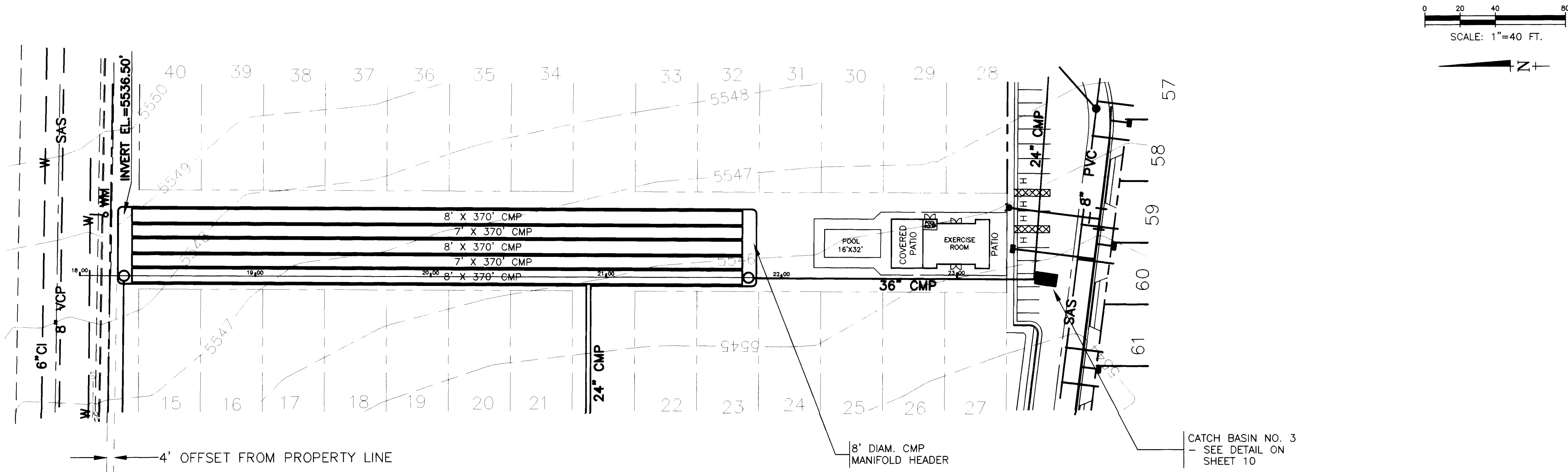
**CITY OF ALBUQUERQUE
PUBLIC WORKS DEPARTMENT
ENGINEERING DEVELOPMENT GROUP**

**TITLE: PAVING, SAS, WATER & STORM DRAIN IMPROVEMENTS
LINN WAY & HENDREN LANE PLAN & PROFILE**

Design Review Committee City Engineer Approval

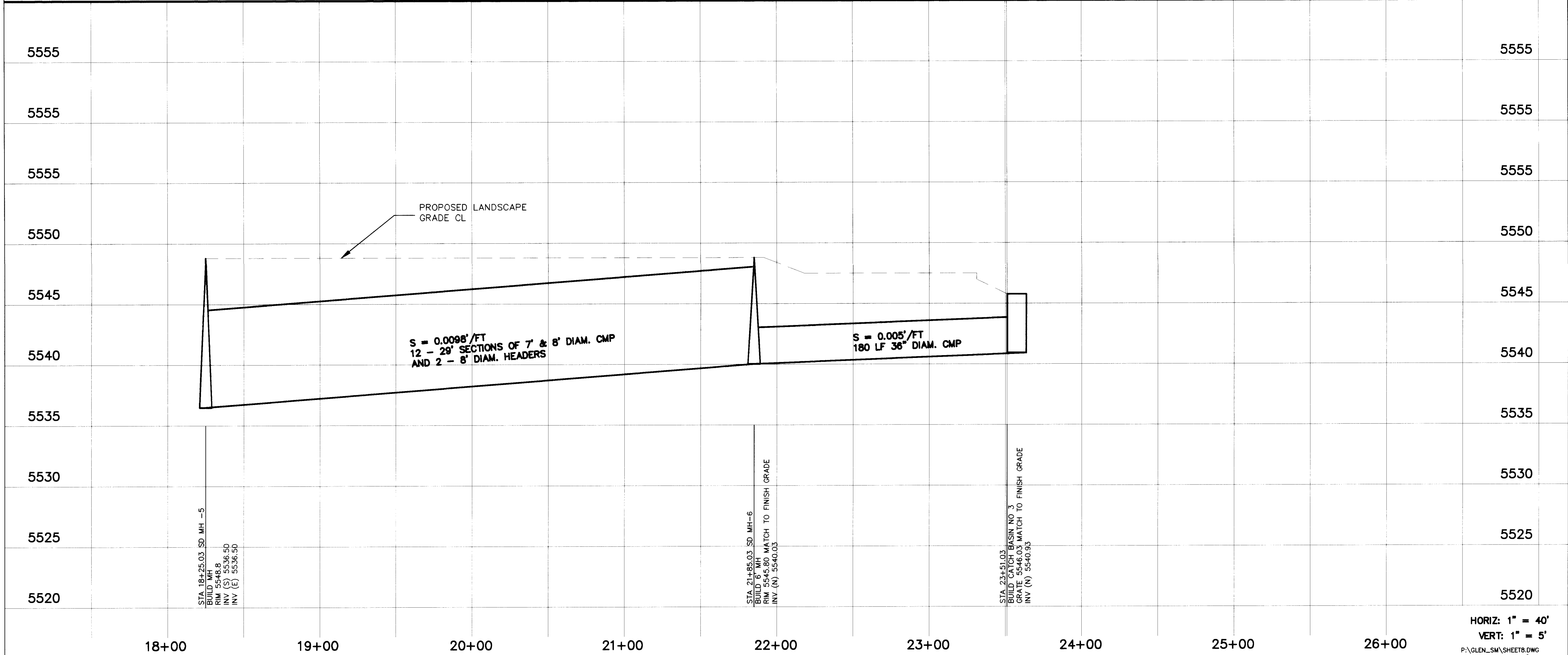
Mo./Day/Yr.	Mo./Day/Yr.

City Project No. 541081 Zone Map No. L-22 Sheet 7 of 10



NOTE: ALL UNDERGROUND UTILITY LOCATIONS SHOWN HEREON ARE BASED ON FIELD SURVEY, RECORD MAPS OR NEW MEXICO ONE CALL MARKINGS. PROPERTY LINE INFORMATION SHOWN WAS TAKEN FROM EXISTING RECORDS. THE EXACT LOCATION OF ALL UTILITIES AND PROPERTY LINES SHALL BE FIELD VERIFIED BY THE CONTRACTOR PRIOR TO BEGINNING CONSTRUCTION.

DETENTION SYSTEM



- STORM DRAIN/DETENTION SYSTEM
- CONTRACTOR SHALL TAKE ALL NECESSARY STEPS TO ELIMINATE SEDIMENTATION OF THE STORM DRAIN/DETENTION SYSTEM DURING CONSTRUCTION. THE STORM DRAIN/DETENTION SYSTEM SHALL BE ACCEPTED FOR FINAL PAYMENT IN A CLEAN AND FREE OF SEDIMENT CONDITION UPON COMPLETION OF THE ENTIRE CONSTRUCTION PROJECT.
 - PIPE MATERIAL SHALL BE REINFORCED CONCRETE PIPE (R.C.P.), CLASS III, OR CORRUGATED METAL PIPE (C.M.P.) AS SPECIFIED ON THE PLANS. SUBSTITUTE OR EQUAL MATERIALS MAY BE USED WITH THE PRIOR APPROVAL OF THE ENGINEER AND OWNER.
 - ALL C.M.P. SHALL CONFORM TO AASHTO M-36 AND PIPE MATERIAL SHALL CONFORM TO AASHTO M-274.
 - ALL C.M.P. SHALL BE INSTALLED IN ACCORDANCE TO ASTM A-798/M-145.
 - ALL C.M.P. SHALL BE ALUMINIZED STEEL, TYPE 2 PIPE. JOINTS SHALL BE ALUMINIZED STEEL TYPE 2 HUGGER BANDS WITH DOUBLE BAR, BOLT AND STRAP ARRANGEMENT AND A 14 GAGE BACK-UP PLATE WITH O-RING GASKETS.
 - ALL 96-INCH DIAMETER C.M.P. SHALL BE 16 GAGE AND 84-INCH DIAMETER PIPE SHALL BE 16 GAGE. C.M.P. SHALL BE MANUFACTURED FROM 5 IN. x 1 IN. CORRUGATIONS.
 - PRIOR TO CONSTRUCTION, CONTRACTOR SHALL SUBMIT FABRICATION DETAILS THAT REFLECT CURRENT INDUSTRY STANDARDS TO THE ENGINEER.

AS-BUILT INFORMATION

CONTRACTOR: *Khami Co.* WORK: *Storm Drain Improvements* DATE: *11/97*

INSPECTOR: *James D. Smith* DATE: *11/97*

ACCEPTANCE: *James D. Smith* DATE: *11/97*

VERIFICATION: *James D. Smith* DATE: *11/97*

CORRECTED: *James D. Smith* DATE: *11/97*

RECORDED BY: *James D. Smith* DATE: *11/97*

BENCH MARKS

ELEVATIONS SHOWN ON THIS GRADING AND DRAINAGE PLAN WERE SURVEYED FROM TWO BENCH MARKS.

ACS STATION NO. 4-L22 ELEVATION 5583.331 AND STATION NO. 1-L21(R) ELEVATION 5534.627.

SURVEY INFORMATION

FIELD NOTES

NO. BY DATE

ENGINEER'S SEAL

REVISIONS

DESIGN

NO. DATE BY

1 11/97 AS-BUILT JS

DESIGNED BY: JS, DJ DATE 3/96

DRAWN BY: RP, KS, CRL DATE 3/96

CHECKED BY: JS, DJ DATE 3/96

26-5410.81 0807

SOUDER, MILLER & ASSOCIATES
CIVIL/ENVIRONMENTAL SCIENTISTS & ENGINEERS
1201 Parkway Dr., Suite C • Santa Fe, NM 87505
(505) 473-9211 FAX (505) 471-6675

CITY OF ALBUQUERQUE
PUBLIC WORKS DEPARTMENT
ENGINEERING DEVELOPMENT GROUP

TITLE: **STORM DRAIN IMPROVEMENTS
DETENTION SYSTEM**

Design Review Committee

City Engineer Approval

P.O. A. 5-1-96

Mo./Day/Yr.

Mo./Day/Yr.

City Project No.

Zone Map No.

Sheet

of

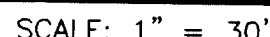
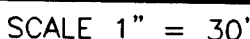
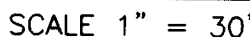
541081

L-22

8

10

SCANNED BY
BY LASON

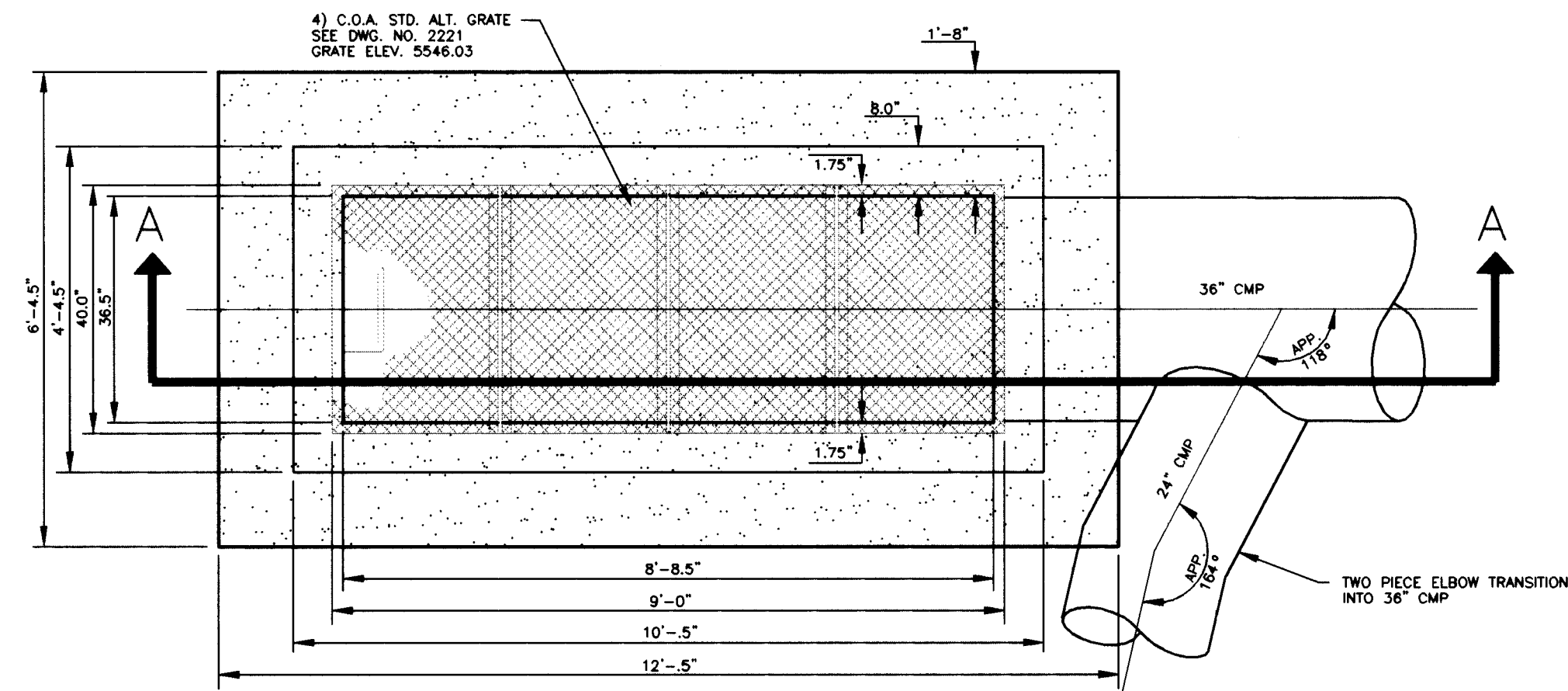


1201 Parkway Dr., Suite C • Santa Fe, NM 87505
(505) 473-9211 FAX (505) 471-6675

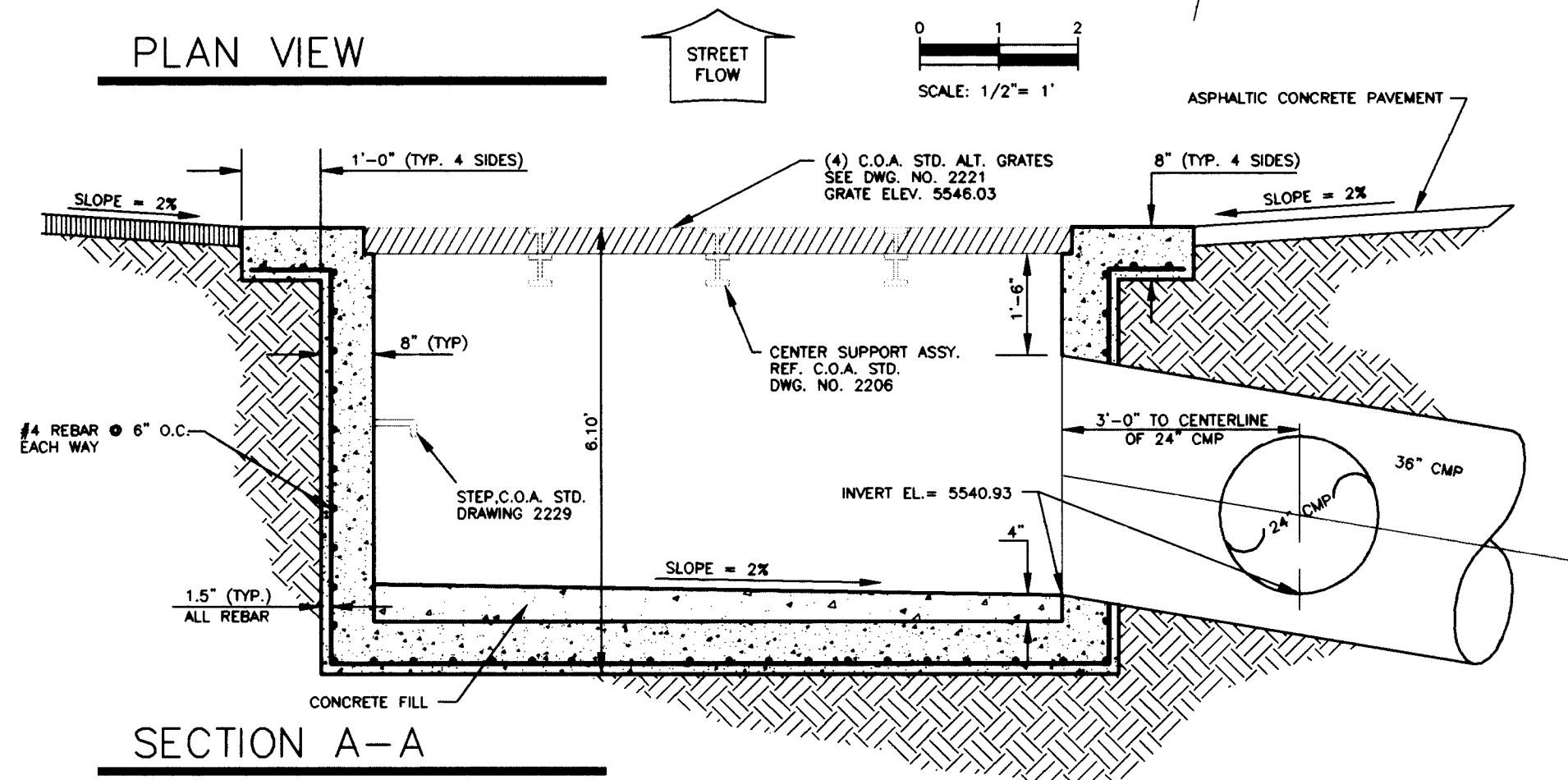
City Project No.	541081	Zone Map No.	Sheet	9	of	10
------------------	--------	--------------	-------	---	----	----

[illegible]

SCANNED BY
BY LASON



PLAN VIEW



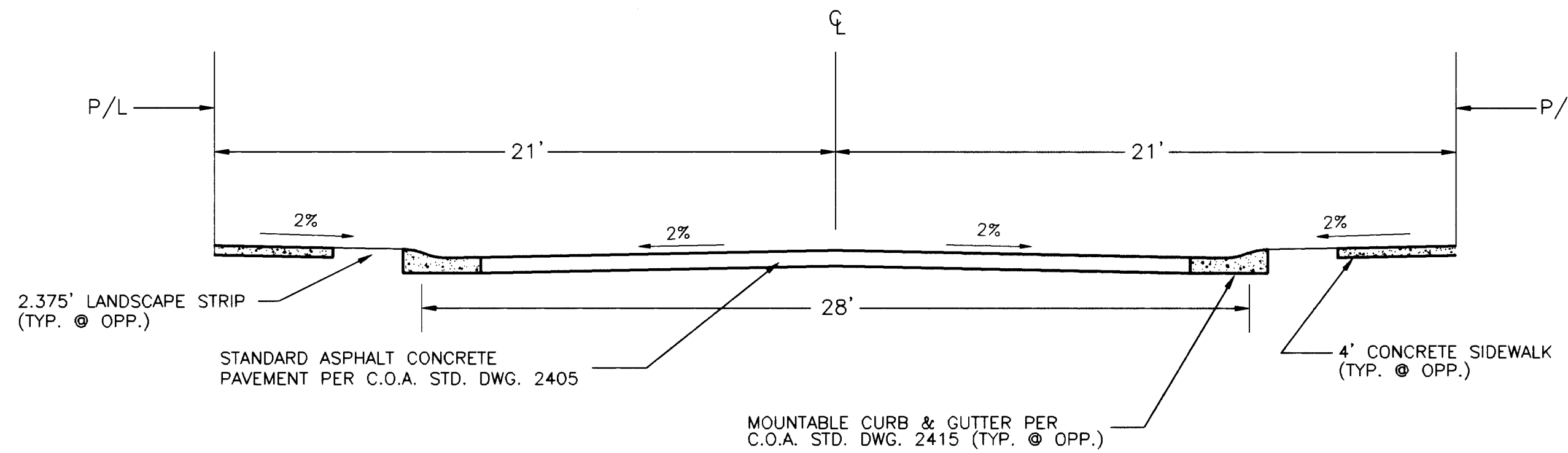
SECTION A-A

NOTES

1. CONCRETE SHALL BE 4000 psi, 28 DAY STRENGTH
2. SUBGRADE COMPACTION SHALL BE 90% OF MODIFIED PROCTOR.
3. FOR FRAME & GRATING, SEE C.O.A. STD. DWG. 2221
4. FOR CENTER SUPPORT ASSEMBLY, SEE C.O.A. STD. DWG. 2215.

CATCH BASIN NO.3

SCALE: 1/2" = 1'



SECTION - TYPICAL PRIVATE ACCESS DRIVE

HORIZ. SCALE 1" = 4'

26-5410.81 1097

SOUDER, MILLER & ASSOCIATES
CIVIL/ENVIRONMENTAL SCIENTISTS & ENGINEERS
1201 Parkway Dr., Suite C • Santa Fe, NM 87505
(505) 473-9211 FAX (505) 471-6675

SCANNED BY
BY LASON

P:\GLEN_SM\DETAILS\T2.DWG

AS-BUILT INFORMATION

BENCH MARKS

SURVEY INFORMATION

ENGINEER'S SEAL

CONTRACTOR: *Khan, Co.*
DATE: 11/97
INSPECTOR: *Khan, Co.*
DATE: 11/97
FIELD VERIFICATION BY: *Khan, Co.*
DATE: 11/97
CORRECTED BY: *Khan, Co.*
DATE: 11/97
MICRO-FILM INFORMATION

ELEVATIONS SHOWN ON THIS GRADING AND DRAINAGE PLAN WERE SURVEYED FROM TWO BENCH MARKS.
ACS STATION NO. 4-122 ELEVATION 5563.831 AND
STATION NO. 1-121(P) ELEVATION 5534.627.

FIELD NOTES
NO. BY DATE

ENGINEER'S SEAL
JAMES R. SMITH
REGISTERED PROFESSIONAL ENGINEER
4891
11/17/97

NO.	DATE	REMARKS	DESIGN
1	11/97	AS-BUILT	BY JS

Designed By: DJJS Date: 3/96
Drawn By: CLRP Date: 3/96
Checked By: DJJS Date: 3/96

CITY OF ALBUQUERQUE PUBLIC WORKS DEPARTMENT ENGINEERING DEVELOPMENT GROUP			
TITLE: SECTIONS & DETAILS			
Design Review Committee	City Engineer Approval	Mo./Day/Yr.	Mo./Day/Yr.
City Project No.	541081	Zone Map No.	Sheet 10 of 10